

Tagging allows faithful tracing of expression and enhances biochemical detection of Ran Binding Protein 9 *in vivo*.

Shimaa Soliman^{1,2#}, Aaron E. Stark^{3,#}, Miranda Gardner¹, Sean W. Harshman⁴, Chelssie C. Breece⁵, Foued Amari³, Arturo Orlacchio¹, Min Chen³, Anna Tessari¹, Jennifer A. Martin⁴, Rosa Visone², Michael A. Freitas¹, Krista La Perle⁵, Dario Palmieri¹, and Vincenzo Coppola^{1,3,*}.

¹Department of Cancer Biology and Genetics, College of Medicine, The Ohio State University and Arthur G. James Comprehensive Cancer Center; ²Department of Medicine, Dentistry and Biotechnology, G. d'Annunzio University of Chieti, Italy; ³Genetically Engineered Mouse Modeling Core, The Ohio State University and Arthur G. James Comprehensive Cancer Center; ⁴Air Force Research Laboratory, Wright-Patterson AFB, 45433, Ohio, USA; ⁵Department of Veterinary Biosciences and Comparative Pathology & Mouse Phenotyping Shared Resource, College of Veterinary Medicine, The Ohio State University and Arthur G. James Comprehensive Cancer Center, Columbus, 43210, Ohio, USA.

#These authors equally contributed to this work

*To whom correspondence should be addressed: vincenzo.coppola@osumc.edu.

Vincenzo Coppola, MD

Assistant Professor, Cancer Biology & Genetics

988 Biomedical Research Tower, Wexner Medical Center

The Ohio State University and Comprehensive Cancer Center

460 West 12th Avenue

Columbus, OH 43210

Tel: 614 688 8038

Running title: Knock-in of small V5 and HA epitope tags allows tracing and efficient detection of mouse Ran Binding Protein 9 *in vivo*.

Keywords: RANBP9, RANBPM, SCORPIN, Mouse model, Epitope tagging, CRISPR/Cas9, CTLH complex, ARMC8, GID4, GID8, TWA1, MAEA, MKLN1, RANBP10, RMND5A, RMND5B, WDR26, YPEL5

Abstract

The lack of tools to reliably detect RanBP9 *in vivo* has significantly hampered progress in understanding the biological functions of this scaffold protein. We report here the generation of a novel mouse strain, RanBP9-TT, in which the endogenous protein is fused with a double (V5-HA) epitope tag at the C-terminus. We show that the double tag does not interfere with the essential functions of RanBP9. Opposite to RanBP9 constitutive knock-out (KO) animals, both male and female RanBP9-TT mice are viable, fertile and do not show any obvious phenotype. The presence of the tags allows unequivocal detection of RanBP9 in tissues both by IHC and WB. Importantly, immunoprecipitation and mass spectrometry analyses reveal that the tagged protein pulls down known interactors of wild type RanBP9.

In summary, we report here the generation of a new mouse in which RanBP9 expression and interactions can be reliably studied by the use of commercially available α tag antibodies and overcome some of the existing limitations in the study of this protein *in vivo*.

Introduction

RANBP9 is a scaffold protein whose biological functions are not completely understood [1]. Since its initial description, it has been reported to interact with a number of proteins that are located in different cellular compartments and have different biological functions [1]. In many instances RANBP9 expression affects the half life and stability of other proteins [1]. This function is in accordance with the model in which RanBP9 is part of an E3 ligase multi-subunit structure called the CTLH (C-Terminal to LisH) complex that can induce target proteins degradation via the proteasome pathway. This E3 ligase structure is believed to be the equivalent of the GID (Glucose-Induced degradation Deficient) complex in *S. cerevisiae*, which is involved in responding to changes of nutrient availability in the microenvironment [2-5]. Although not well studied in mammals, the human CTLH complex has been recently reported to be a heterodecameric structure that, in addition to RANBP9, includes its paralog RANBP10 and nine other poorly studied proteins (ARMC8, GID4, GID8, MAEA, MKLN1, RMND5A, RMND5B, WDR26, and YPEL5) [5-8].

Objective difficulties impair the investigation of the cellular pathways and mechanisms in which RANBP9 takes part. Among other issues, the limited specificity and affinity of commercially available antibodies pose significant technical challenges. The existence of a paralog named RANBP10 [9, 10] with high similarity in long parts of the protein limits the RANBP9 specific sequence available to raise antibodies. In addition, some of the sequences might not have biochemical features ideal to induce a robust humoral immune response. Therefore, many of the commercially available α RANBP9 antibodies fall short in their detection power, reliability, and/or specificity.

We have previously used the only existing antibody validated by the Human Protein Atlas (HPA050007; www.proteinatlas.org) for immunohistochemical (IHC) detection of human RANBP9 in formalin-fixed paraffin embedded Non-Small Cell Lung Cancer (NSCLC) specimens [11]. Although specific for human RANBP9, in our hands HPA050007 does not seem to be recognizing mouse RanBP9 with similar affinity and signal-to-noise ratio is low when assessed by Western Blot (WB). In addition, WB analysis often shows the presence of additional bands at lower molecular weight that might be due to non-specific binding.

We have used and will continue to use human cell lines for *in vitro* studies. However, to better recapitulate organismal physiology, a significant part of our ongoing studies on RANBP9 involvement in tumor development and response to therapy necessarily takes advantage of *in vivo* murine models. In this regard, we had previously generated the constitutive RanBP9 knockout (KO) animal. On a hybrid C57Bl/6-S129 genetic background, homozygous KO mice were mostly dying hours after birth. A small cohort of survivors showed small body size and severe sterility in both males and females [12]. Using reagents from the International Mouse Phenotyping Consortium (<http://www.mousephenotype.org/>; IKMC project nr: 44910), we have now engineered the conditional KO mouse that allows the study of RanBP9 loss of function *in vivo*, which recapitulates the phenotype of the constitutive KO when the gene is ubiquitously deleted [13]. However, to overcome the limitations in the detection of endogenous RanBP9, we have decided to engineer a novel RanBP9 strain in which the wild type protein is fused to commonly used tags against which there are reliable and commercially available antibodies.

Here, we report the generation by CRISPR/Cas9 of the RanBP9-TT (= double Tag = TT) mouse line in which we have inserted a double epitope tag (V5-HA) at the C-terminus of the protein. We show that tagging of RanBP9 allows unequivocal detection of the protein both by IHC and biochemistry while does not affect its essential biological functions. Because we knocked in the tags leaving intact the 3'-untranslated region (UTR) of the RanBP9 genomic locus, the expression of the protein faithfully recapitulates the wild type (WT) expression. Therefore, the RanBP9-TT strain becomes a powerful tool to dissect *in vivo* the biology related to RanBP9 functions allowing its unequivocal detection in murine tissues and cells.

Results

Generation of the RanBP9-TT animals.

We used CRISPR/Cas9 to knock-in the double tag V5-HA at the C-terminus of RanBP9 (**Figure 1**; **Figure S1**). For targeting purposes, we employed the online Benchling software (<https://www.benchling.com/>). We selected the guide RNA (sgRNA) with the best specificity and efficiency scores closest to the insertion site before the stop codon (**Figure 1A** and **Figure S1A-C**). C57Bl/6Tac WT fertilized eggs were used for the generation of founders (F0) mice. Two F0 animals (#1 and #2) were selected for further breeding and propagation of the RanBP9-TT colony. Both founders produced progeny (F1 mice) positive for the correct insertion of the double tag and animals from both lines were used for this work. Sanger sequencing showed that F1 animals from both founder lines contained the correct in frame insertion of the V5-HA double tag (**Figure 1C**). In order to mitigate the presence of CRISPR/Cas9 potential off-target effects, we crossed F1 animals a second time to wild type C57Bl/6Tac mice and generated F2 progeny that were used for experimental purposes.

These results show that the V5-HA double tag at the C-terminus of endogenous RanBP9 was successfully inserted as designed.

Addition of tag at the C-terminus does not cause lethality or infertility.

On a mixed C57Bl/6-S129 background using gene-trapped ES cells from the Baygenomics consortium [14], homozygous inactivation of RanBP9 causes early postnatal lethality in mice [12]. The pure C57Bl/6 background seems to worsen the

phenotype and homozygous KO animals immediately after birth are rarely found, if any [15].

We observed that RanBP9-TT homozygous knock-in (KI) mice are viable and do not show any obvious phenotype. They are born at Mendelian ratio and there are no differences in the number of females and males born. Adult animals do not show any gross anatomical or histological abnormality. Most importantly, homozygous RanBP9-TT males and females were bred to each other or to heterozygous and WT C57Bl/6Tac mice. Mice of both genders were able to reproduce in similar numbers to WT controls (**Table 1**). Testes and ovaries of RanBP9-TT mice show histological features similar to WT animals (**Figure 2** and **Figures S2, S3, S4**). All together, these results show that the insertion of the V5-HA tag at the C-terminus of RanBP9 does not interfere with critical biological functions required for mouse survival. On the contrary, homozygous RanBP9-TT animals do not display any obvious phenotype and both male and female mice are fertile.

Addition of V5-HA double tag at the C-terminus allows faithful immunohistochemical detection of endogenous RanBP9.

We then examined the expression of RanBP9 in mouse tissues by immunohistochemistry (IHC). We obtained tissue sections from RanBP9 WT and RanBP9-TT animals and stained them with α RanBP9 specific antibody (HPA050007), α V5, or α HA specific antibody. In **Figure 2**, a selected array of tissues with significant expression of RanBP9 is shown. In RanBP9-TT Cerebellum, Testis, and Lung α V5 and α HA staining are similar in pattern but sharper than the α RanBP9 specific antibody. On the other hand, α tag

antibodies do not detect RanBP9 in sections of the same tissues from WT animals (**Figures S2**). Finally, we also performed a more comprehensive IHC survey of several other organs/tissues using both α V5 (**Figures S3**) and α HA (**Figures S4**).

V5-HA-tagged RanBP9 mRNA and protein expression is similar to wild type RanBP9.

Next, we sought to measure the amount of RanBP9-TT protein and messenger RNA in different tissues by qRT-PCR and WB. We extracted protein from tissues/organs with various levels of reported expression [12]. A WB analysis probing with α RanBP9 (**Figure 3A**), α V5 (**Figure 3B**), or α HA (**Figure 3C**) specific antibody shows that the levels of expression of RanBP9-TT are similar to the levels of RanBP9 in wild type animals. Accordingly, we did not detect any significant difference between levels of RanBP9 mRNA in wild type and RanBP9-TT mice (**Figure 3D**).

These results show that the expression of RanBP9-TT is similar to wild type RanBP9 and there are no perturbations of expression caused by the insertion of the V5-HA tag.

RanBP9-TT protein maintains the known RanBP9 WT interactions.

RanBP9 is part of a poorly studied multi-subunit complex called the CTLH complex [6]. Therefore, we sought to determine whether the addition of the double V5-HA tag at the C-terminus of RanBP9 interfered with its binding to the CTLH complex. To this aim, we generated homozygous RanBP9-TT mouse embryonic fibroblasts (MEFs) and performed immunoprecipitation (IP) using resin-conjugated α HA antibodies. We ran four different gels and we probed the IP fractions by WB. We were able to purchase specific antibodies for six of the members of the CTLH complex. Gid8 and Muskelein are clearly present in

IP fractions from RANBP9-TT (**Figure 4A**). Similarly, Maea, Armc8 (**Figure 4B**), Wdr26 (**Figure 4C**) and Rmnd5A (**Figure 4D**) are present only in fractions pulled down by resin-conjugated α HA in the RANBP9-TT and not WT MEFs.

These results clearly indicated that V5-HA-tagged RanBP9 interacts with known partners of WT RanBP9. However, since we were not able to probe by WB for the remaining members of the CTLH complex, we decided to perform a proof-of-principle small-scale IP using α V5 antibody followed by high-resolution mass spectrometry (MS) analysis. Again, our experiments for IP-MS/MS analysis included lysates from RanBP9 WT MEFs as negative controls. As shown in (**Table 2**), we ranked all identified proteins by number of peptide spectral matches (PSMs) or counts present in RanBP9-TT MEFs and absent in RanBP9 WT IP fractions. The exception was Muskelin with one count identified in RanBP9 WT α V5 immunoprecipitates. As expected, results show that RanBP9 is robustly enriched and ranks first for number of counts in RanBP9-TT fractions while showing none in the RanBP9 WT MEF IP. Importantly, the list of proteins detected in RanBP9-TT lysates by IP-MS/MS includes the remaining 10 members of the CTLH complex within the top 19 hits (**Table 2**).

Taken all together these results indicate that the addition of the V5-HA to RanBP9 C-terminus does not prevent its participation into the CTLH complex.

Discussion

Specific and reliable detection of proteins *in vivo* is difficult and it is estimated that researchers waste millions of dollars every year on the use of non-specific antibodies [16, 17]. Challenges are harder when the proteins of interest are not commonly studied and thus validated reagents are limited or missing. In some instances, the existence of paralogs with extensive homology further complicates the generation of tools that can unequivocally detect only the specific target. This is the case for the poorly studied scaffold protein RanBP9 and its paralog RanBP10 that share high homology in 4 out of the 5 annotated protein-protein interaction domains [9, 10]. To date, there is only one validated antibody for detection by IHC of human RANBP9 reported in the Human Protein Atlas project (www.proteinatlas.org). This reagent is not tested and validated for detection of mouse RanBP9 (HPA050007). In our hands, this antibody did not appear to have the sensitivity at levels similar to antibodies from other sources that performed better for biochemical detection of both human and mouse RanBP9 by conventional methods such as IP and WB. While expectations are to use multiple antibodies for the detection of a target protein, this necessity generates frustration for the quality of results and cost of reagents.

To overcome these limitations and obtain a more reliable *in vivo* tool for the study of RanBP9 in physiological and pathological paradigms, we have decided to use CRISPR/Cas9 and generate RanBP9-TT mice by the addition of a double V5-HA tag at the C-terminus of RanBP9. In fact, biochemical tags are an excellent solution for detection problems and are widely employed for research purposes [18].

In order to minimize steric hindrance, we have chosen to use relatively small tags of 9 amino acids. In addition, we have also chosen to use two of them (V5 and HA) in sequence to increase the detection power and have at least two different options.

The engineering of RANBP9-TT mice has been possible thanks to the use of CRISPR/Cas9. In fact, compared to the classical use of ES cells [19], in addition to being faster and efficient in different genetic backgrounds, this new technology offers the critical advantage of not leaving any "scar" in the edited allele other than the desired engineered mutation [20, 21]. Therefore, in RanBP9-TT mice RanBP9 C-terminus as well as the 3'-untranslated region remained intact preserving not only the protein structure, but also the endogenous regulation of expression (**Figure 1 and Figure S1**). The WB analysis in **Figure 3A-C** clearly shows that RanBP9 protein levels in all analyzed organs/tissues are comparable between RanBP9 WT and TT mice. Interestingly, detection of RanBP9 by the use of α V5 (**Figure 3B**) appears to have superior sensitivity and specificity (lower background) compared not only to the α HA (**Figure 3C**), but also the α RanBP9 specific antibody (**Figure 3A**). qRT-PCR measurements confirmed that there are no differences in RanBP9 mRNA levels in different organs/tissues from RanBP9-TT compared to RanBP9 WT mice (**Figure 3D**). However, it is interesting to note that levels of mRNA not always correlate with protein levels. While testes yield the highest amount of protein and mRNA, lungs showing the second highest level of protein display a level of messenger lower than cerebellum where RanBP9 protein is significantly less. Similarly, liver contains the lowest amount of RanBP9 protein, but a level of mRNA higher than both spleen and lungs. These results might be explained as technical artifacts or suggest the existence of post-transcriptional regulatory mechanisms

of gene expression. In this regard, we previously observed this poor correlation between levels of RanBP9 mRNA and protein in human NSCLC samples [11]. This phenomenon leads us to believe that it is always necessary in cancer cells and tissues to measure protein levels to evaluate the expression of RanBP9 rather than relying on the amount of RNA. Therefore, a tool like the RanBP9-TT mice allowing the unequivocal detection of RanBP9 protein becomes invaluable for studies *in vivo*. Indeed, the IHC analysis in **Figure 2**, **Figure S2**, **Figure S3**, and **Figure S4** provides strong evidence that the RANBP9-TT strain can be used to clearly show cells expressing this protein in all tissues. If crossed to *in vivo* models of different malignancies, RANBP9-TT will be of value in studying the role of this protein during tumorigenesis. One priority for our group is to show how relevant this protein is in lung tumorigenesis and how it is specifically expressed in tumor cells versus populations of the microenvironment. Further, we have shown that DNA damage elicits post-translational modifications and alters RANBP9 subcellular localization [22]. Since *in vitro* studies completely miss the complexity of organismal responses and adaptive mechanisms that ensue *in vivo*, we are planning to use our new mouse model to study how the protein is modified and changes localization following genotoxic stress, for example.

We have deliberately decided the placement of the TT tag based on *in vitro* evidence from our lab and other groups indicating that C-terminus tagging of RanBP9 was not impairing RANBP9 movement inside cells upon specific stimulation [22-24]. However, such a strategy still presents the intrinsic and real risk that the added tag might block RanBP9 interactions with other proteins and interfere with its biological functions. Here, we show that vital functions and known interactions of RanBP9 are preserved in

RanBP9-TT mice. In fact, RanBP9 constitutive KO mice show a severe perinatal lethality and the occasional survivors, both males and females, are runt and sterile displaying gonads completely devoid of germ cells [12, 15]. On the contrary, RanBP9-TT homozygous animals do not show any obvious phenotype. A basic observational and anatomical examination shows that TT-knock-in animals develop and grow similarly to WT littermates. Gross anatomic parameters and reproduction abilities are similar in RanBP9-TT mice compared to WT littermates (**Table 1**). Specifically, RanBP9-TT mice display normal histological architecture of both testes and ovaries. Sperm and oocytes are present in RanBP9-TT animals without any appreciable difference compared to WT controls (**Figure 2, Figure S2, Figure S3, Figure S4**). Since sperm and oocytes are the cells in which RanBP9 is expressed at its highest levels, these results clearly show that the TT tag does not have undesired deleterious effects and it is not interfering with fundamental biological functions of RanBP9 necessary for germ cell development and maturation [12, 25].

Obviously, it is impossible for us to completely exclude the possibility that the V5-HA tag is interfering at the molecular level with yet unknown biological functions of RanBP9. However, this protein is part of an evolutionary conserved and ubiquitously expressed multi-subunit E3-ligase called the CTLH (C-Terminal to LisH) complex [4, 6-8]. Therefore, a valid, if not the best, strategy for us to test whether the TT tag interfered with molecular interactions entertained by RanBP9 was to show whether the V5-HA-tagged RanBP9 protein still participated into the CTLH complex. Here, we show by WB analysis that the immunoprecipitation of tagged RanBP9 by α HA brings down Gid8, Muskelin (**Figure 4A**), Maae, Armc8 (**Figure 4B**), Wdr26 (**Figure 4C**), and Rmnd5A

(**Figure 4D**). Identification of 6 of the 10 known CTLH members (not including RanBP9) strongly indicates that the tagged protein is incorporated into the complex and retains its activity and functionality. As reliable antibodies for the remaining CTLH members (Gid4, RanBP10, Rmnd5B, and Ypel5) are not commercially available, to further validate our findings, we performed α V5 IPs from RanBP9-TT and WT MEFs followed by tandem mass spectrometry analysis (**Table 2**). Ranking proteins by number of peptide spectral matches (PSMs) or counts in the RanBP9-TT samples and excluding those with counts in the IP from RanBP9 WT cells, resulted in the presence of 11 members of the CTLH complex within the top 20 hits (**Table 2**). This proof-of-principle experiment, performed in duplicate, demonstrated that the entire complex was immunoprecipitated by V5-HA-tagged RanBP9. IP-MS/MS data are consistent with WB results (**Figure 4A-C**) and add further evidence that RanBP9-TT conserves the same interactions that the RanBP9 WT protein has.

In summary, we show here that we have engineered a new mouse strain bearing a tagged RanBP9 protein that retains all the known features and abilities of the endogenous wild type molecule. The TT tag allows reliable immunohistochemical detection and enrichment from cell lysates of RanBP9 and its known main binding partners and members of the CTLH macromolecular complex. This new tool will be invaluable in studying RanBP9 functions in the context of the entire organism in physiological and pathological conditions.

Material and Methods

CRISPR/Cas9 RanBP9-TT mouse generation

The Genetically Engineered Mouse Modeling Core of the Ohio State University Comprehensive Cancer Center generated RanBP9-TT mice by using CRISPR/Cas9 technology. Briefly, CRISPR targeting strategy was designed using the online algorithm at www.benchling.org. The synthetic single strand oligo donor DNA (ssODN) in which both V5-HA tags are contained was purchased from Integrated DNA Technologies (Coralville, Iowa, USA). Synthetic tracrRNA and crRNA was purchased from Sigma-Aldrich (Saint Louis, MO, USA). GeneArt Platinum Cas9 nuclease purified protein (cat. nr. B25642) was purchased from Invitrogen (ThermoFisher Scientific; Waltham, MA, USA). The mix of assembled sgRNA with Cas9 protein (RNP complex) and ssODN was microinjected into C57Bl/6Tac zygotes. C57Bl/6Tac WT animals were used for founder mating purposes.

Immunohistochemical (IHC) analysis of RanBP9-TT and RanBP9 WT expression in mouse adult tissues.

Adult mouse tissues were sectioned and stained at the Comparative Pathology & Mouse Phenotyping Shared Resource of the Ohio State University Comprehensive Cancer Center as previously described [26]. Briefly, tissues were fixed in 10% (v/v) formalin, routinely processed, and embedded in paraffin for immunohistochemical characterization. Formalin-fixed, paraffin-embedded tissues were cut into 4- μ m-thick sections, were dewaxed in xylene and rehydrated through graded ethanol solutions to water. Antigens

were retrieved by heating the tissue sections at 96-98°C for 25 minutes in citrate solution (10 mmol/L, pH 6.0) using a vegetable steamer. Sections were cooled at room temperature for 15 minutes, and immersed in methanol in the presence of 0.3% hydrogen peroxide for 15 minutes to block the endogenous peroxidase activity, rinsed in tap water, and then subsequently rinsed in PBS for 5 minutes. The sections were then stained with the indicated antibodies using a Dako Autostainer. Rabbit anti-RanBP9 antibody (Sigma-Aldrich; cat. nr. HPA050007) at room temperature for 1hr. As negative controls, slides were incubated with rabbit IgG, and antibody diluent instead of the primary antibody. The sections were rinsed with buffer, and then incubated with horseradish peroxidase-labeled goat against rabbit secondary antibody for 30 minutes. The sections were rinsed and then incubated with VECTASTAIN® Elite® ABC HRP Reagent, R.T.U for 30 minutes. DAB was used as the chromogen, and hematoxylin as the nuclear counterstain. Sections were then dehydrated, cleared, and mounted permanently with glass coverslip. Slides were photographed with an Olympus BX45 light microscope with attached DP27 digital camera and corresponding CellSen software (B&B Microscopes Limited, Pittsburgh, PA).

Similar staining was performed using goat α V5 antibody, primary incubation at 1hr (Abcam cat. nr. ab95038) and rabbit α HA, primary incubation 30 minutes (Cell Signaling cat. nr. 3724).

WB analysis of RANBP9 expression.

Mouse tissues were homogenized on ice in NP-40 buffer supplemented with Halt Protease and Phosphatase Inhibitor cocktail (Thermo Fisher Scientific cat. nr. 78442).

Protein concentration was determined using the Bio-Rad protein assay dye (Bio-Rad cat. nr. 5000006). Western blot analysis was performed using 30 to 50 μ g proteins run on Mini-PROTEAN TGX precast gels (Bio-Rad cat. nr. 456-1094).

α RANBP9 primary antibody was purchased from Abcam (cat. number ab140627) and used at a dilution of 1:2,000 in 5% non-fat milk in TBS-T. Signals were detected with HRP-conjugated secondary antibodies (GE Healthcare) and the chemiluminescence substrate Supersignal wet pico PLUS (Thermo Fisher Scientific). Equivalent loading among samples was confirmed with α GAPDH (Cell Signaling cat. nr. 3683S).

RT-PCR analysis of RanBP9 expression.

Murine tissues were homogenized in ice using 1 ml TRIzol Reagent (Life technologies cat. nr. 15596018) following the manufacturer's protocol. The extracted RNA was quantified using Nano-Drop 2000. To analyze RanBP9 gene expression, real time quantitative polymerase chain reaction (RT-qPCR) was performed from complementary DNA (cDNA). Total RNA (500 ng) was reverse transcribed using the High Capacity cDNA Reverse Transcription Kit (Applied Biosystem cat. nr. 4368814) following the manufacturer's instructions. The cDNA was used for quantitative real time PCR with TaqMan fast advanced master mix (Applied Biosystems cat. nr. 4444557). Samples were amplified simultaneously in triplicates in one assay run. Analysis was performed by Prism 7.0 software (Graphpad Prism®) using the Δ -ct method (Applied Biosystems). The RANBP9 probe used was Hs00170646_m1.

Immunoprecipitation

RanBP9 was immunoprecipitated from total protein extracts using monoclonal α HA-Agarose antibody (Sigma cat. nr. A2095-1ML). Briefly, 1mg of total protein extracts were pre-cleared by incubating with PierceTM Protein A/G Plus Agarose (Thermo Scientific cat. nr. 20423) for 1 hr at 4°C. Lysates were centrifuged at 4°C, the supernatant was collected and incubated with 5 μ g of the primary antibody overnight at 4°C. Proteins interacting with RanBP9 were detected in the immunoprecipitates of RanBP9 using wet-transfer WB. Interactors of CTLH complex were detected using the following antibodies, α RMND5A (Novus Biologicals cat. nr. NBP1-92337), α WDR26 (Abcam cat. nr. ab85962), α ARMC8 (Proteintech cat. nr. 12653-1-AP), α Muskelin (Proteintech cat. nr. 14735-1-AP), α C20orf11 (a.k.a. GID8; Proteintech cat. nr. 24479-1-AP), α MAEA (R&D Systems cat. nr. AF7288).

Immunoprecipitation Tandem Mass Spectrometry (IP-MS/MS)

Cells were separated into cytoplasmic and nuclear fractions prior to immunoprecipitation as described in Mohammed *et al* [27]. Briefly, α V5 antibody (5 μ g, Invitrogen cat. nr. R96025) was incubated with PierceTM Protein A/G Magnetic Beads (Thermo Scientific cat. nr. 88803) at 4°C with rotation overnight. Following washes to remove unbound antibody, 1 mg of cytoplasmic or nuclear protein extract was incubated with the bead-antibody mixture at 4°C with rotation overnight. After stringent washes to remove non-specific proteins, beads were equilibrated in 100 mM ammonium bicarbonate with 3 washes prior to on-bead digestion with trypsin (800 ng; Promega cat. nr. V5280) overnight at 37°C 800 rpm. Digestion continued the next day for 4 hours after samples

were supplemented with an additional bolus of trypsin (800 ng). Beads were placed in magnetic stand to collect supernatants and dried down in Speedvac concentrator.

Prior to mass spectrometry analysis, peptides were resuspended in loading buffer (2% ACN, 0.003% TFA) and quantified via Nanodrop. Chromatography separation and mass spectrometry methods were performed as described in Scheltema *et al* for data dependent acquisition on a Q-Exactive HF (Thermo Fisher Scientific) [28]. Tryptic peptides (1000 ng) were isocratically loaded onto a PepMap C18 trap column (300 μ m x 5mm, 100 \AA , 5 μ m) at 5 μ L min⁻¹ and analytical reversed phase separations were performed on a Dionex UltiMate 3000 RSLCnano HPLC system coupled to an EASYSpray PepMap C18 column (15cm x 50 μ m ID, 100 \AA , 2 μ m) over a 90 min gradient at 300nL min⁻¹. RAW mass spectrometry files were converted to mzml and searched against a complete, reviewed mouse Uniprot database containing common contaminants (downloaded 04/10/2019) via OpenMS (version 2.3.0) with X! TANDEM (release 2015.12.15.2) and MS-GF+ (release v2018.01.20).

Acknowledgements

Authors are grateful to Ms. Lu Ming from the Genetically Engineered Mouse Modeling Core of the Ohio State University Comprehensive Cancer Center for the support in mouse colony breeding and Ms. Juliann Rectenwald from the Comparative Pathology and Mouse Phenotyping Shared Resource of the Ohio State University Comprehensive Cancer Center for mouse necropsy and tissue preparation. We also thank Dr. Rhonda Pitsh from the Air Force Research Laboratory for assistance with MS. A.T. is a recipient of a post-doctoral fellow Pelotonia Award. M.G is a recipient of graduate student Pelotonia Award. For this work, V.C was supported in part by start-up funds from the Ohio State University Comprehensive Cancer Center (P30CA016058).

Conflict of interest declaration

Authors declare no competing interests.

Table and figure legends

Figure 1. Generation of the RanBP9-TT mouse model by CRISPR/Cas9. **A)** 180bp single strand oligo DNA (ssODN) used as donor to recombine the V5 (PINK) and the HA (GREEN) tags into the C-terminus of RanBP9. **B)** Representative PCR screening results from tail DNA of WT C57Bl/6 (negative control) RanBP9-TT Founder #2 (F#2), and homozygous RanBP9-TT pup number 36 (P#36). Results are congruent with prediction showed in Figure S1D. **C)** Sanger-sequencing results from homozygous pup number 36 compared to C57Bl/6 WT and ssODN shown in A.

Figure S1. Generation of the RanBP9-TT mouse model by CRISPR/Cas9. **A)** Depiction of guide RNA (sgRNA; light GREEN) selected to target the last codon of RanBP9 and relative on-target (MAROON) and off-target (LIGHT BROWN) scores (Benchling). **B)** sgRNA sequence and scores (Benchling). **C)** Predicted off-target sites and scores using the selected sgRNA (Benchling). **D)** Virtual PCR prediction for screening of positively recombined RanBP9-TT KI animals. **C)** Sequence of primers used for mutant KI screening and expected size (base pair) of amplicons for WT and RanBP9-TT animals.

Figure 2. IHC detection of RanBP9 by α V5 or α HA in RanBP9-TT mice in comparison with detection by α RanBP9 specific antibody in RanBP9-TT and WT mice. A-D) Cerebellum; E-H) Testis; I-L) Lungs. Sections from indicated organs from WT mice (A, E, I) and RanBP9-TT mice (B, C, D, F, G, H, J, K, L) were stained with α RanBP9

HPA050007 antibody (first two panels from left) or α V5 (third panel from left) or α HA specific antibody (fourth panel from left).

Figure S2. IHC detection of RanBP9 by α V5 or α HA in homozygous RanBP9-TT mice in comparison with detection by α RanBP9 specific antibody. Sections from same organs shown in Figure 2. A-D) Cerebellum; E-H) Testis; I-L) Lungs. Sections from indicated organs from WT (A, B, D, E, F, H, I, J, L) and RanBP9-TT mice (C, G, K) were stained with α V5 (A, E, I) or α HA (B, F, J) or with Hematoxylin and Eosin (H&E) (C, D, G, H, K, L).

Figure S3. IHC detection of V5 in RanBP9-TT mice. A-L) Selection of indicated organs/tissues from RanBP9-TT homozygous mice stained with a α V5 specific antibody. All pictures were taken with 40x objective and 10x eyepiece (400x). Scale bar = 50um EXCEPT: stomach (10x = 100x, scale bar = 200um); large intestine (10x = 100x, scale bar = 200um); mammary gland (60x = 600x, scale bar = 20um).

Figure S4. IHC detection of HA in RanBP9-TT mice. A-L) Selection of indicated organs/tissues from homozygous RanBP9-TT mice stained with a α HA specific antibody. All pictures were taken with 40x objective and 10x eyepiece (400x). Scale bar = 50um EXCEPT: stomach (10x = 100x, scale bar = 200um); large intestine (10x = 100x, scale bar = 200um); mammary gland (60x = 600x, scale bar = 20um).

Figure 3. Expression of RanBP9-TT in selected adult mouse tissues. Proteins were extracted from mouse cerebellum, lung, testis, spleen, and liver of RanBP9 wild type (WT) and RanBP9-TT (9-TT) mice. In addition, proteins were also extracted from RanBP9-KO MEFs (9-KO MEFs) and used as negative control. A) Detection of RanBP9 wild type and V5-HA-tagged by α RanBP9 specific antibody. B) Detection of RanBP9 wild type and V5-HA-tagged by α V5 specific antibody. C) Detection of RanBP9 wild type and V5-HA-tagged by α HA specific antibody. D) Measurement of RanBP9 mRNA by RT-PCR. Expression levels of RanBP9 were assessed in Cerebellum, Lung, Testis, Spleen, and Liver from WT mice and BP9-TT mice. Expression levels in WT and TT tissues are represented in black and grey bars respectively. Each sample was analyzed in triplicate. Each well was normalized to average values of β -actin to obtain a $\Delta Ct = 2^{-(FAM \text{ dye Ct} - average \text{ Actb dye Ct})}$. mRNA levels in each WT tissue were similar to their counterpart TT-tissues. A statistical analysis was performed using Graphpad Prism® to compare expression values in same organs from WT and TT mice. The Mann-Whitney (Wilcoxon rank sum) test was used and none of the values between WT and TT levels were significantly different.

Figure 4. V5-HA-tagged RanBP9 maintains its ability to interact with known members of the CTLH complex. RanBP9 WT and TT Mouse Embryonic Fibroblasts (MEFs) were cultured in standard conditions and protein lysates were obtained. Resin conjugated with α HA antibodies was used to immunoprecipitate RANBP9-TT protein. IP fractions and 5% of input were run on gels to generate 4 different membranes that were probed with the indicated antibodies by WB. Vinculin is used as loading control.

Table 1. RanBP9-TT mice are viable and fertile. Pairs of parents of the indicated genotypes were set up for breeding. In all cases the expected Mendelian ratio of homozygous and heterozygous mutant mice was obtained. The number of male and female mice obtained from the different crosses was similar. Finally, both males and females homozygous RanBP9-TT mice were able to reproduce in numbers similar to WT C57Bl/6Tac present in the colony. A statistical analysis (Chi-squared test; Graphpad Prism®) did not result in any significant difference between the expected and the observed number of animals of a specific genotype or gender.

Table 2. List of top 20 hits of IP-MS/MS from RanBP9-TT MEFs following ranking by number of PSMs. Protein ID, name, and number of PSMs of immunoprecipitated proteins from RANBP9-TT and WT MEFs are reported.

References

1. Salemi LM, Maitland MER, McTavish CJ, Schild-Poulter C. Cell signalling pathway regulation by RanBPM: molecular insights and disease implications. *Open Biol.* 2017;7(6). doi: 10.1098/rsob.170081. PubMed PMID: 28659384.
2. Menssen R, Schweiggert J, Schreiner J, Kusevic D, Reuther J, Braun B, et al. Exploring the topology of the Gid complex, the E3 ubiquitin ligase involved in catabolite-induced degradation of gluconeogenic enzymes. *J Biol Chem.* 2012;287(30):25602-14. doi: 10.1074/jbc.M112.363762. PubMed PMID: 22645139; PubMed Central PMCID: PMCPCMC3408164.
3. Santt O, Pfirrmann T, Braun B, Juretschke J, Kimmig P, Scheel H, et al. The yeast GID complex, a novel ubiquitin ligase (E3) involved in the regulation of carbohydrate metabolism. *Mol Biol Cell.* 2008;19(8):3323-33. doi: 10.1091/mbc.E08-03-0328. PubMed PMID: 18508925; PubMed Central PMCID: PMCPCMC2488282.
4. Liu H, Pfirrmann T. The Gid-complex: an emerging player in the ubiquitin ligase league. *Biol Chem.* 2019. doi: 10.1515/hsz-2019-0139. PubMed PMID: 30893051.
5. Maitland MER, Onea G, Chiasson CA, Wang X, Ma J, Moor SE, et al. The mammalian CTLH complex is an E3 ubiquitin ligase that targets its subunit muskelin for degradation. *Sci Rep.* 2019;9(1):9864. doi: 10.1038/s41598-019-46279-5. PubMed PMID: 31285494; PubMed Central PMCID: PMCPCMC6614414.
6. Lampert F, Stafa D, Goga A, Soste MV, Gilberto S, Olieric N, et al. The multi-subunit GID/CTLH E3 ubiquitin ligase promotes cell proliferation and targets the transcription factor Hbp1 for degradation. *Elife.* 2018;7. doi: 10.7554/eLife.35528. PubMed PMID: 29911972; PubMed Central PMCID: PMCPCMC6037477.
7. Malovannaya A, Lanz RB, Jung SY, Bulynko Y, Le NT, Chan DW, et al. Analysis of the human endogenous coregulator complexome. *Cell.* 2011;145(5):787-99. doi: 10.1016/j.cell.2011.05.006. PubMed PMID: 21620140; PubMed Central PMCID: PMCPCMC3131083.
8. Texier Y, Toedt G, Gorza M, Mans DA, van Reeuwijk J, Horn N, et al. Elution profile analysis of SDS-induced subcomplexes by quantitative mass spectrometry. *Mol Cell Proteomics.* 2014;13(5):1382-91. doi: 10.1074/mcp.O113.033233. PubMed PMID: 24563533; PubMed Central PMCID: PMCPCMC4014293.
9. Palmieri D, Tessari A, Coppola V. Scorpins in the DNA Damage Response. *Int J Mol Sci.* 2018;19(6). doi: 10.3390/ijms19061794. PubMed PMID: 29914204; PubMed Central PMCID: PMCPCMC6032341.
10. Wang D, Li Z, Schoen SR, Messing EM, Wu G. A novel MET-interacting protein shares high sequence similarity with RanBPM, but fails to stimulate MET-induced Ras/Erk signaling. *Biochem Biophys Res Commun.* 2004;313(2):320-6. PubMed PMID: 14684163.
11. Tessari A, Parbhoo K, Pawlikowski M, Fassan M, Rulli E, Foray C, et al. RANBP9 affects cancer cells response to genotoxic stress and its overexpression is associated with worse response to platinum in NSCLC patients. *Oncogene.* 2018. doi: 10.1038/s41388-018-0424-8. PubMed PMID: 30076413.

12. Puverel S, Barrick C, Dolci S, Coppola V, Tessarollo L. RanBPM is essential for mouse spermatogenesis and oogenesis. *Development*. 2011;138(12):2511-21. doi: 10.1242/dev.062505. PubMed PMID: 21561988; PubMed Central PMCID: PMC3100708.
13. Subramanian M, Hayes CD, Thome JJ, Thorp E, Matsushima GK, Herz J, et al. An AXL/LRP-1/RANBP9 complex mediates DC efferocytosis and antigen cross-presentation in vivo. *J Clin Invest*. 2014;124(3):1296-308. doi: 10.1172/JCI72051. PubMed PMID: 24509082; PubMed Central PMCID: PMC3934164.
14. Stryke D, Kawamoto M, Huang CC, Johns SJ, King LA, Harper CA, et al. BayGenomics: a resource of insertional mutations in mouse embryonic stem cells. *Nucleic Acids Res*. 2003;31(1):278-81. doi: 10.1093/nar/gkg064. PubMed PMID: 12520002; PubMed Central PMCID: PMC165511.
15. Palavicini JP, Lloyd BN, Hayes CD, Bianchi E, Kang DE, Dawson-Scully K, et al. RanBP9 Plays a Critical Role in Neonatal Brain Development in Mice. *PLoS One*. 2013;8(6):e66908. doi: 10.1371/journal.pone.0066908. PubMed PMID: 23840553; PubMed Central PMCID: PMC3694151.
16. Voskuil J. Commercial antibodies and their validation. *F1000Res*. 2014;3:232. doi: 10.12688/f1000research.4966.2. PubMed PMID: 25324967; PubMed Central PMCID: PMC4197739.
17. Weller MG. Quality Issues of Research Antibodies. *Anal Chem Insights*. 2016;11:21-7. doi: 10.4137/ACI.S31614. PubMed PMID: 27013861; PubMed Central PMCID: PMC4803150.
18. Vandemoortele G, Eyckerman S, Gevaert K. Pick a Tag and Explore the Functions of Your Pet Protein. *Trends Biotechnol*. 2019. doi: 10.1016/j.tibtech.2019.03.016. PubMed PMID: 31036349.
19. Piovan C, Amari F, Lovat F, Chen Q, Coppola V. Generation of mouse lines conditionally over-expressing microRNA using the Rosa26-Lox-Stop-Lox system. *Methods Mol Biol*. 2014;1194:203-24. doi: 10.1007/978-1-4939-1215-5_11. PubMed PMID: 25064105.
20. Wang H, Yang H, Shivalila CS, Dawlaty MM, Cheng AW, Zhang F, et al. One-step generation of mice carrying mutations in multiple genes by CRISPR/Cas-mediated genome engineering. *Cell*. 2013;153(4):910-8. doi: 10.1016/j.cell.2013.04.025. PubMed PMID: 23643243; PubMed Central PMCID: PMC3969854.
21. Yang H, Wang H, Shivalila CS, Cheng AW, Shi L, Jaenisch R. One-step generation of mice carrying reporter and conditional alleles by CRISPR/Cas-mediated genome engineering. *Cell*. 2013;154(6):1370-9. doi: 10.1016/j.cell.2013.08.022. PubMed PMID: 23992847; PubMed Central PMCID: PMC3961003.
22. Palmieri D, Scarpa M, Tessari A, Uka R, Amari F, Lee C, et al. Ran Binding Protein 9 (RanBP9) is a novel mediator of cellular DNA damage response in lung cancer cells. *Oncotarget*. 2016;7(14):18371-83. doi: 10.18632/oncotarget.7813. PubMed PMID: 26943034; PubMed Central PMCID: PMC4951294.
23. Atabakhsh E, Bryce DM, Lefebvre KJ, Schild-Poulter C. RanBPM has proapoptotic activities that regulate cell death pathways in response to DNA

damage. *Mol Cancer Res.* 2009;7(12):1962-72. doi: 10.1158/1541-7786.MCR-09-0098. PubMed PMID: 19996306.

24. Atabakhsh E, Schild-Poulter C. RanBPM is an inhibitor of ERK signaling. *PLoS One.* 2012;7(10):e47803. doi: 10.1371/journal.pone.0047803. PubMed PMID: 23118896; PubMed Central PMCID: PMC3485245.

25. Puverel S, Tessarollo L. RanBPM, a scaffolding protein for gametogenesis. *Curr Top Dev Biol.* 2013;102:357-84. doi: 10.1016/B978-0-12-416024-8.00013-1. PubMed PMID: 23287040.

26. Caserta E, Egriboz O, Wang H, Martin C, Koivisto C, Pecot T, et al. Noncatalytic PTEN missense mutation predisposes to organ-selective cancer development in vivo. *Genes Dev.* 2015;29(16):1707-20. doi: 10.1101/gad.262568.115. PubMed PMID: 26302789; PubMed Central PMCID: PMC4561480.

27. Mohammed H, Taylor C, Brown GD, Papachristou EK, Carroll JS, D'Santos CS. Rapid immunoprecipitation mass spectrometry of endogenous proteins (RIME) for analysis of chromatin complexes. *Nat Protoc.* 2016;11(2):316-26. doi: 10.1038/nprot.2016.020. PubMed PMID: 26797456.

28. Scheltema RA, Hauschild JP, Lange O, Hornburg D, Denisov E, Damoc E, et al. The Q Exactive HF, a Benchtop mass spectrometer with a pre-filter, high-performance quadrupole and an ultra-high-field Orbitrap analyzer. *Mol Cell Proteomics.* 2014;13(12):3698-708. doi: 10.1074/mcp.M114.043489. PubMed PMID: 25360005; PubMed Central PMCID: PMC4256516.

Figure 1. Generation of the RanBP9-TT Mouse by CRISPR/Cas9

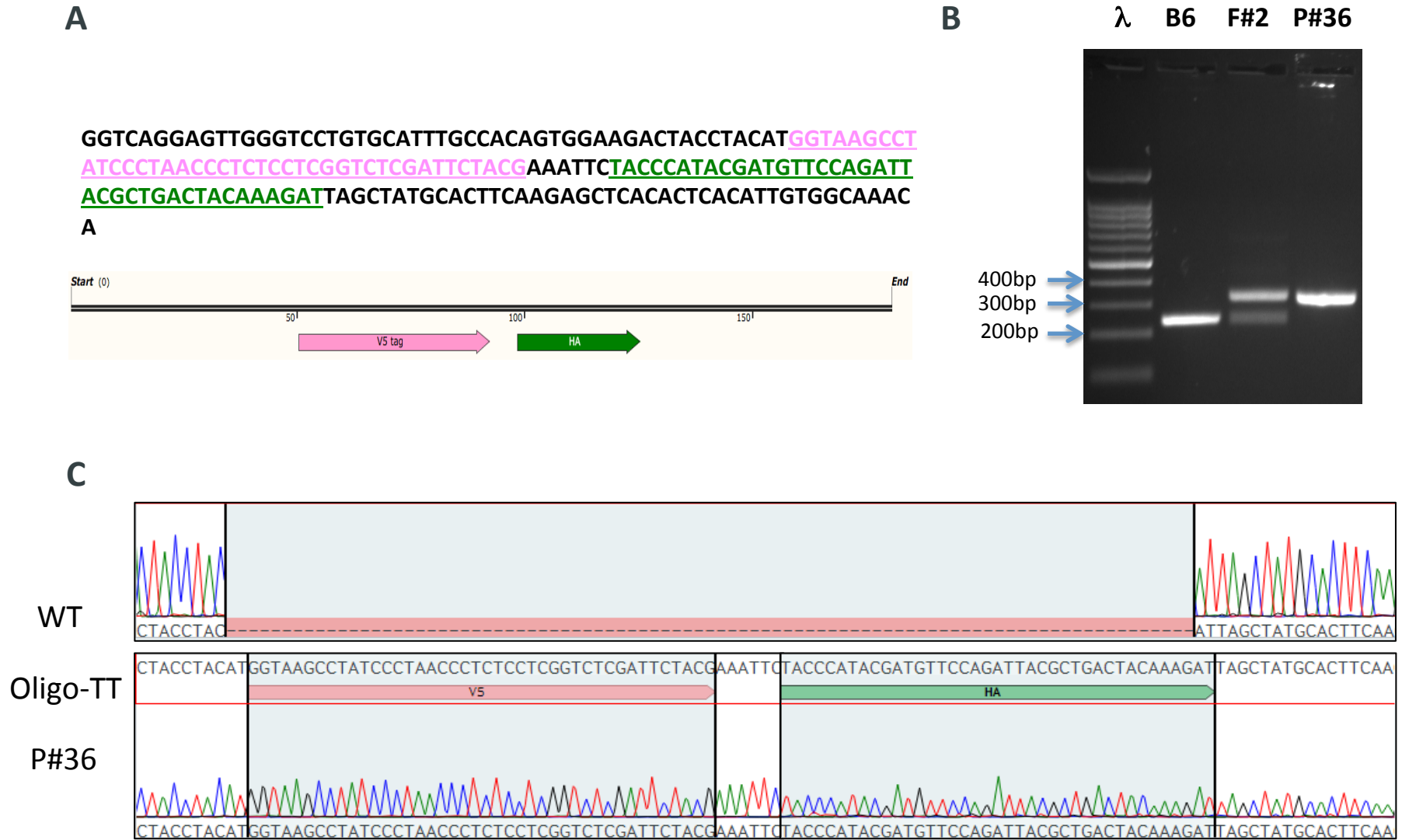
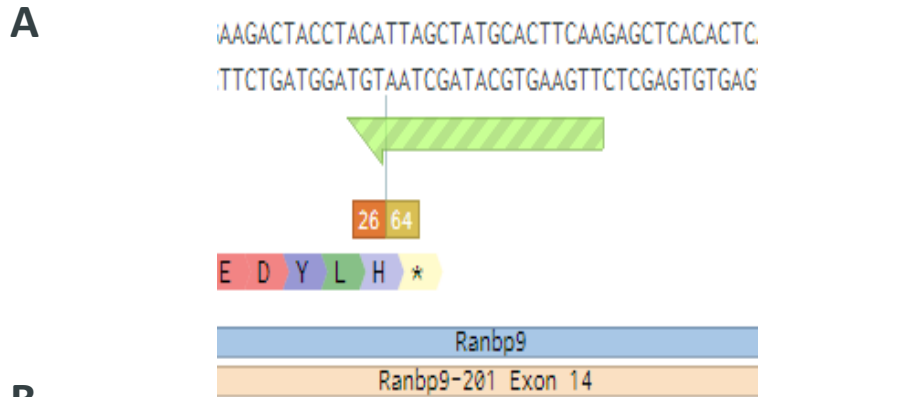


Figure S1. Generation of the RanBP9-TT Mouse by CRISPR/Cas9



C

Sequence	PAM	Score	Gene	Locus
TTGAAGTGCATAGCTAATGT	AGG	100.0	Ranbp9 (ENSMUSG00000038546)	chr13:+43403563
AATAAGTGCATAGCTAATGT	TAG	2.3		chr13:-29291755
TTGATGTACACAGCTAATGT	GGG	1.5		chr11:+11476826
AAAAGTACATAGCTAATGT	TAG	1.5		chr18:+15335082
TTCATGTGCATGGCTAATGT	CAG	1.4		chr3:-63084635
TGGAAGAGCATAGCTAATGA	AGG	1.3	RP23-145F9.4 (ENSMUSG00000103083)	chrt:-171680603



E

Forward Primer: **AAACCCACAATCTGCCAAAG**
 Reverse Primer: **AAAGCGACAAAACCTGTCC**

WT: 256 bp
BP9-TT: 343 bp

Figure 2. IHC detection of RanBP9 by V5 in RanBP9-TT mice.

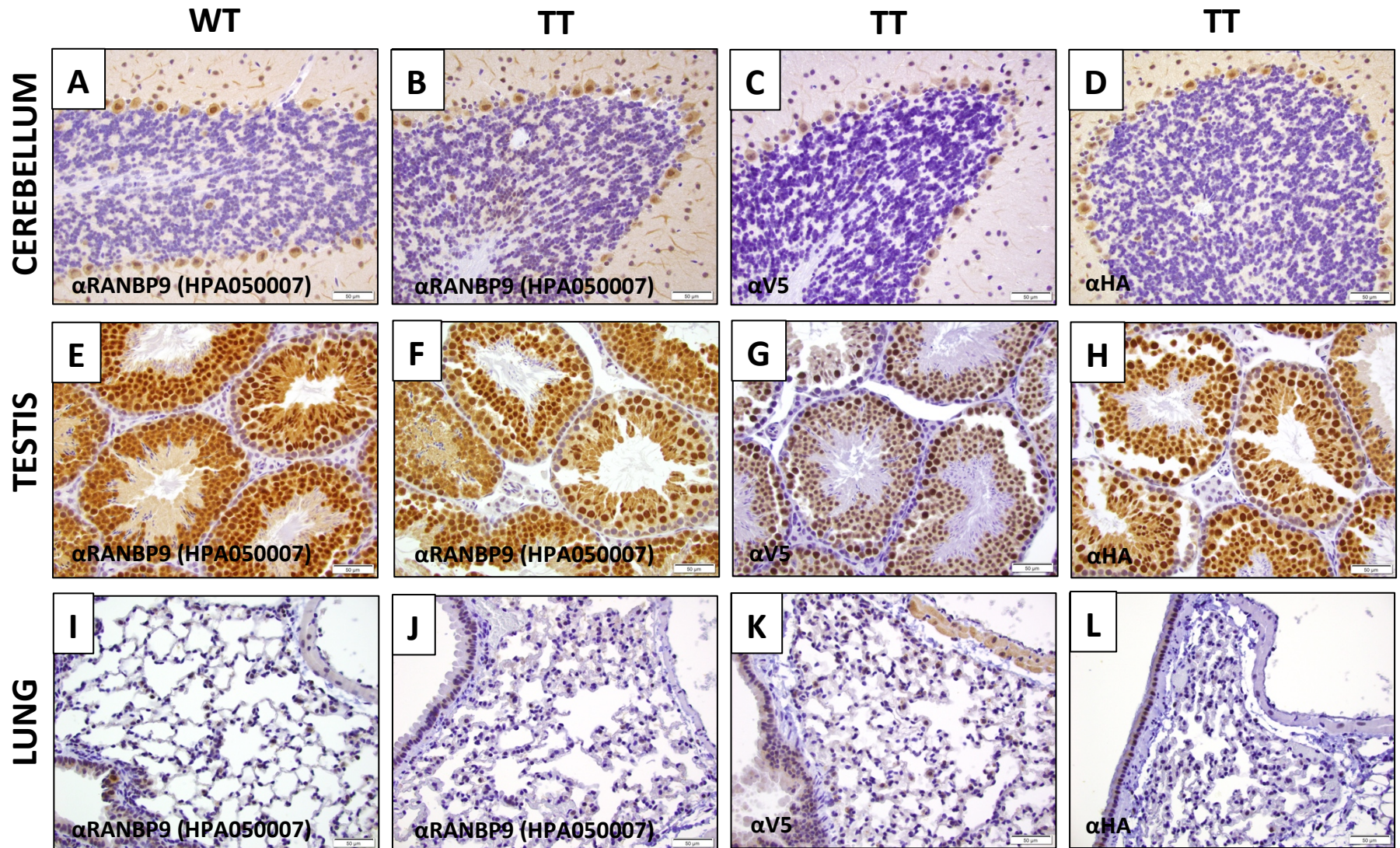


Figure S2. IHC detection of RanBP9 by V5 in RanBP9-TT mice.

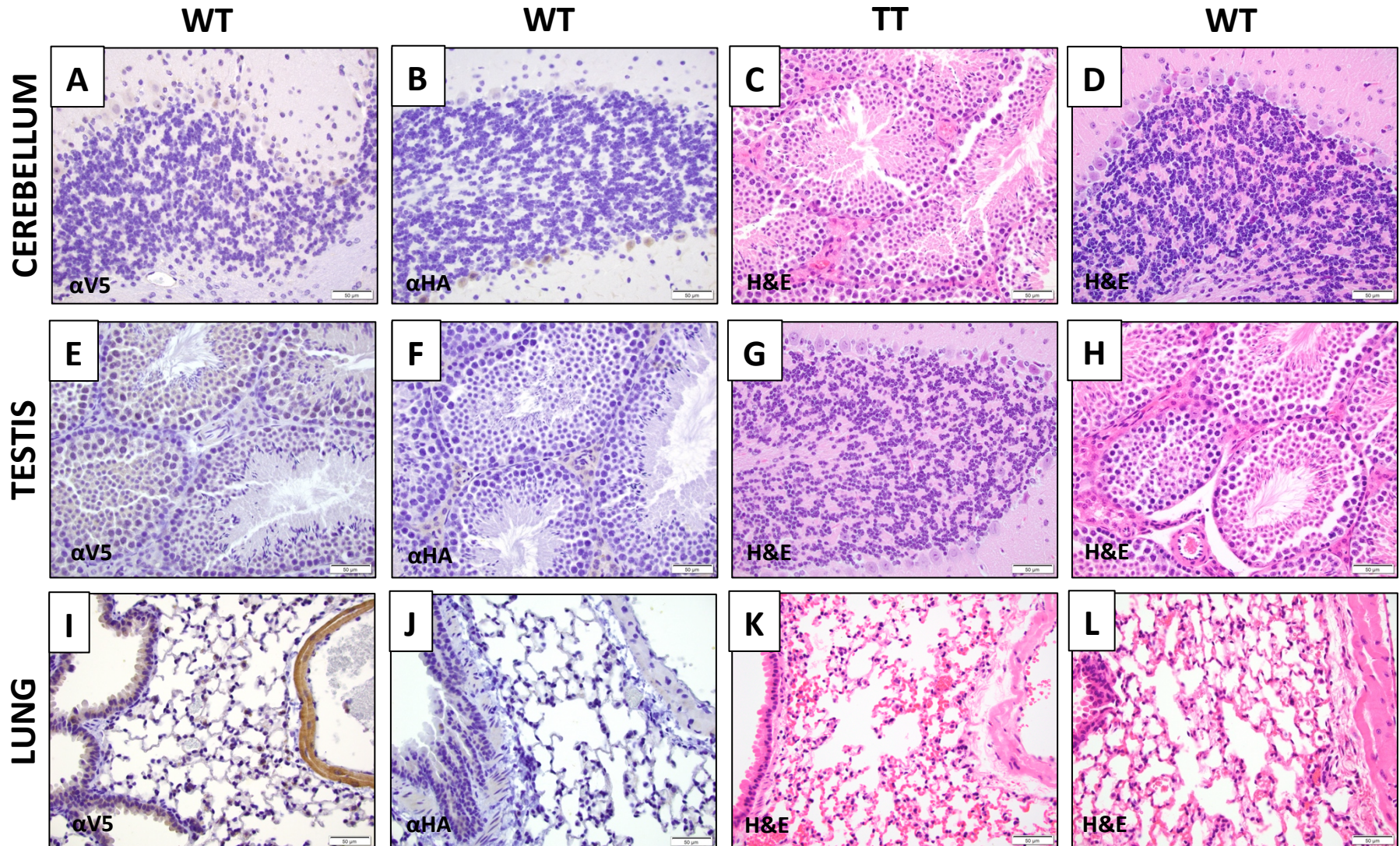


Figure S3. IHC detection of RanBP9 by V5 in RanBP9-TT mice.

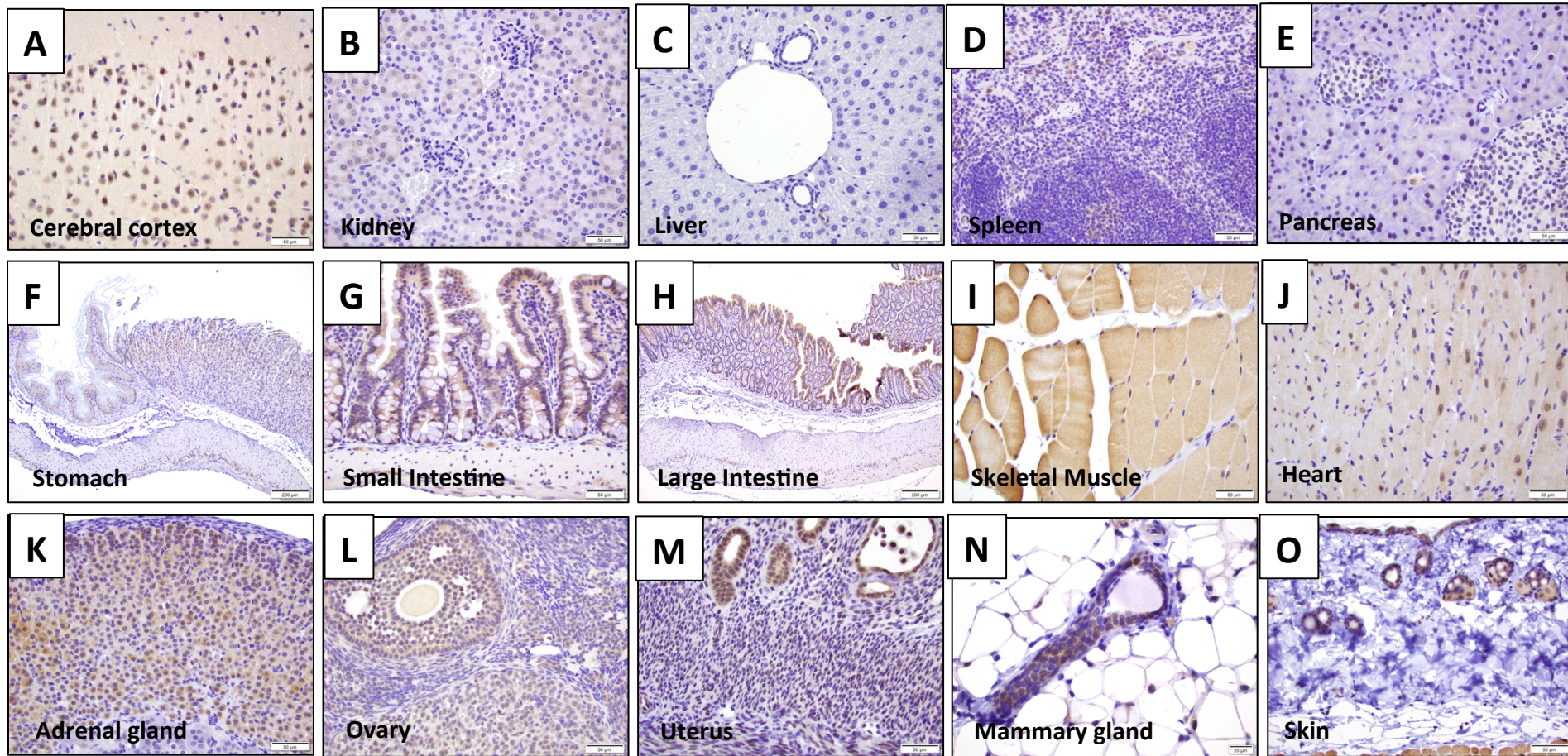


Figure S4. IHC detection of RanBP9 by HA in RanBP9-TT mice.

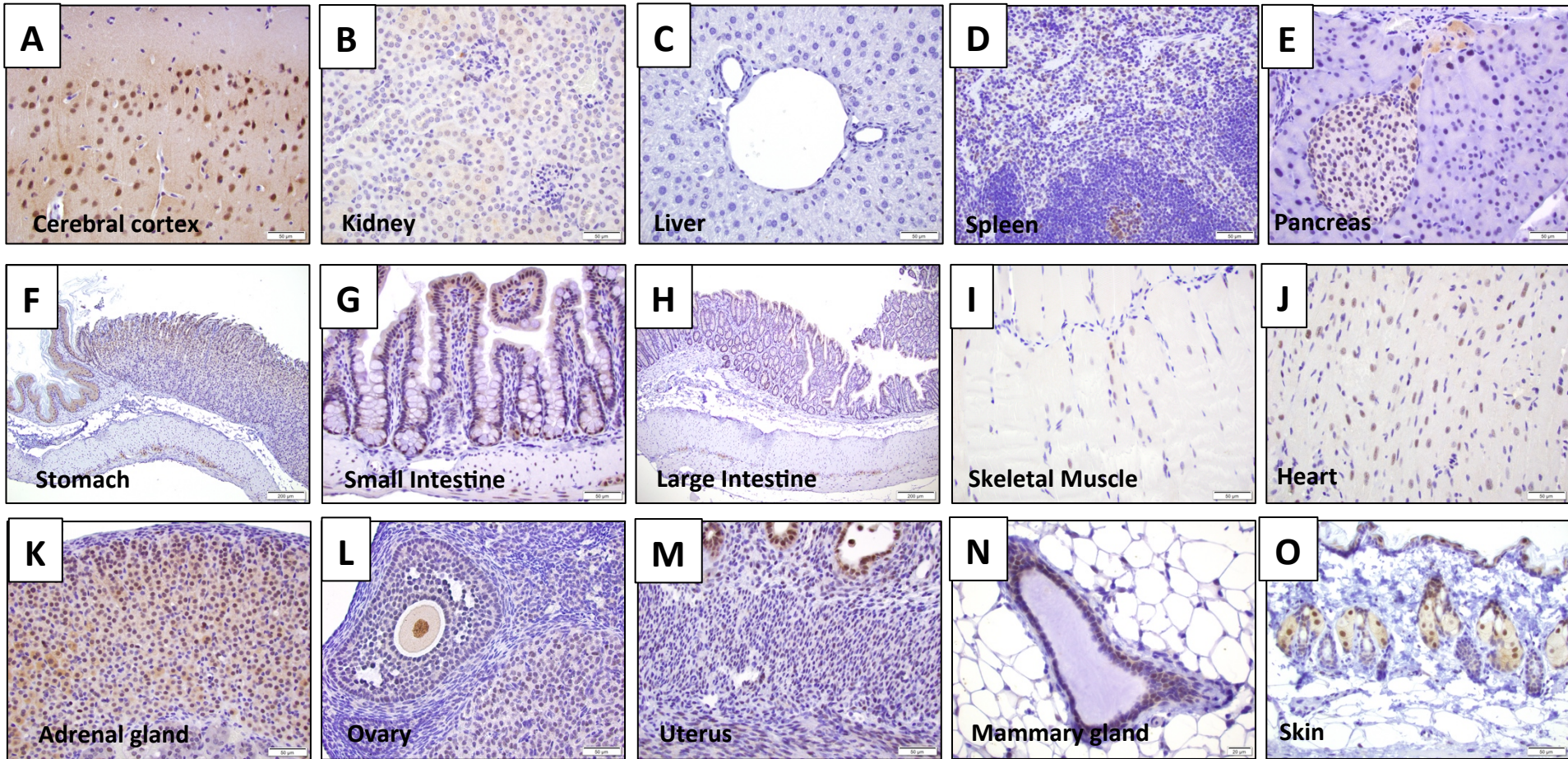


Figure 3. Expression of RanBP9-TT in mouse tissues

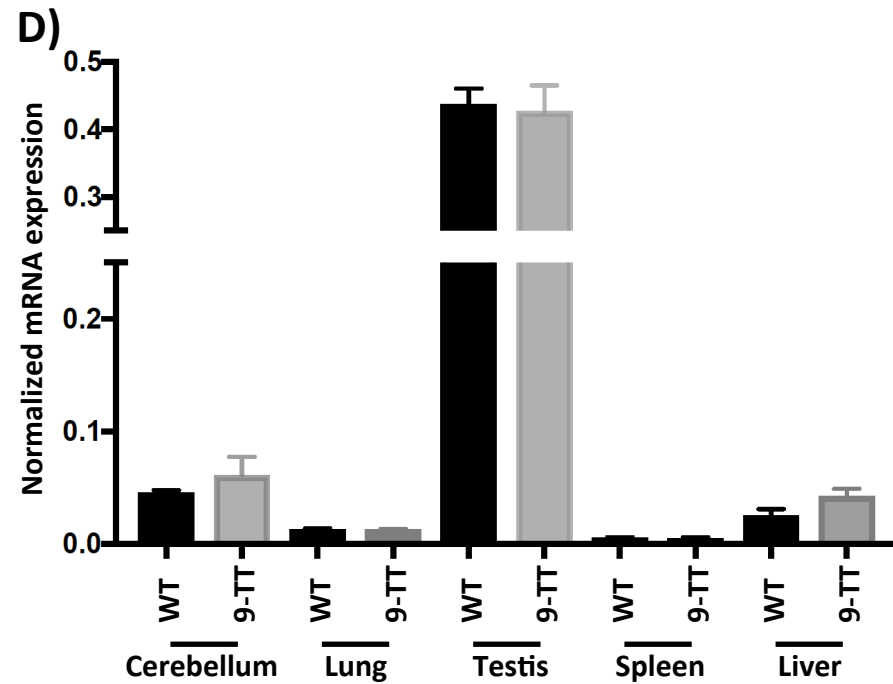
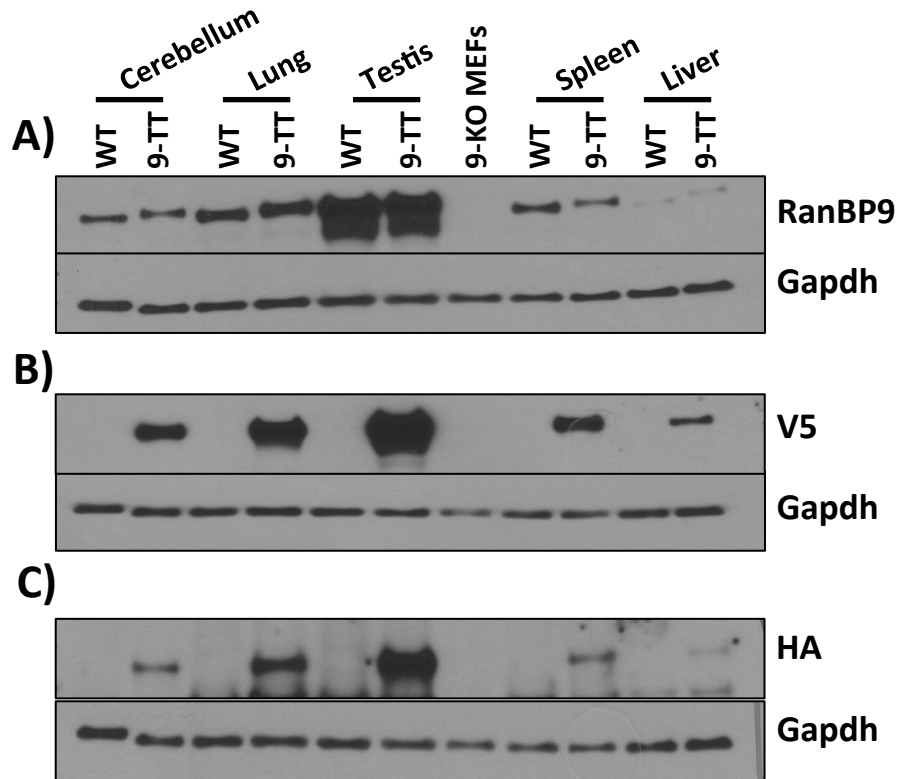


Figure 4. RanBP9-TT proteins coimmunoprecipitates with CTLH protein complex

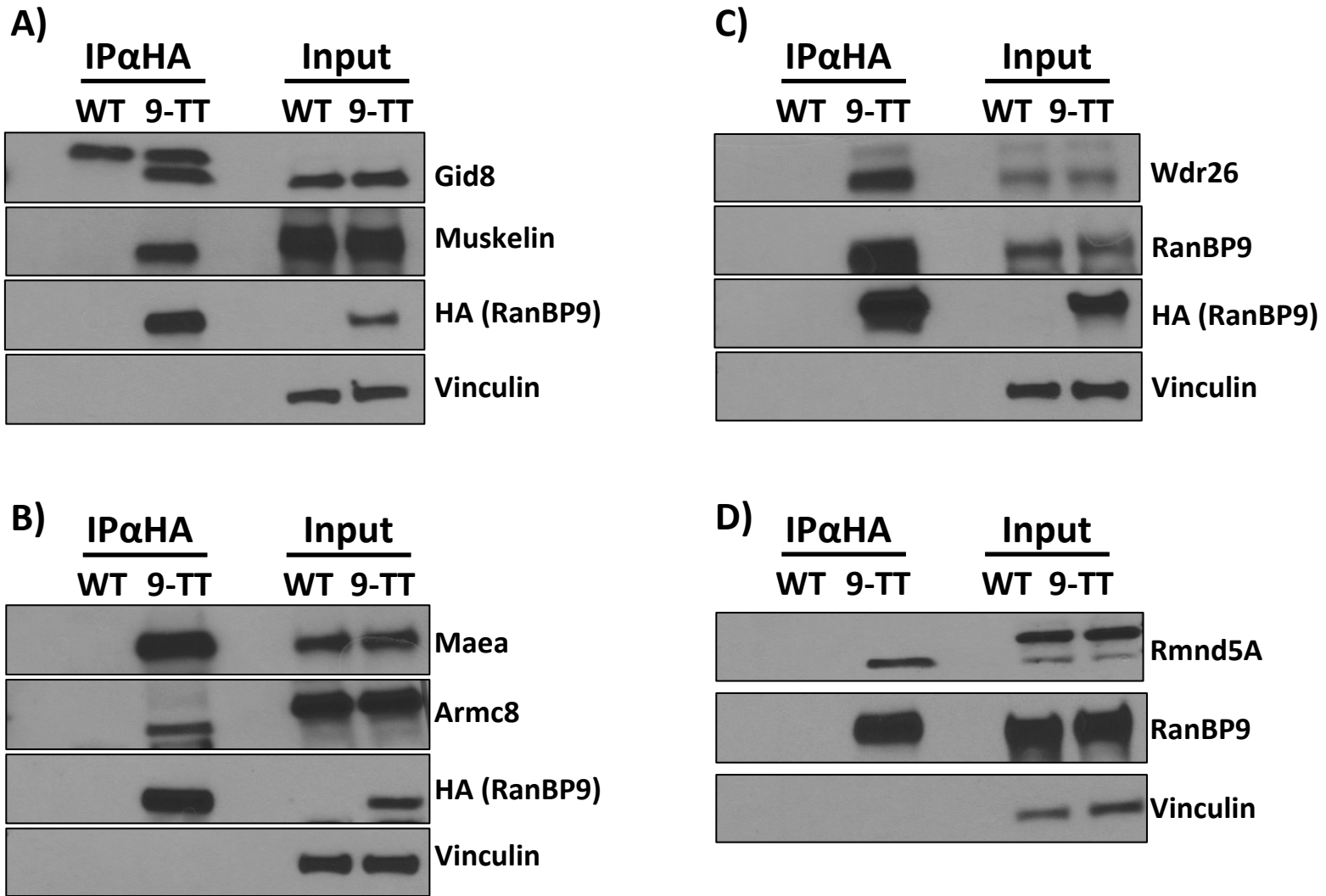


Table 1. RanBP9-TT mice are viable and fertile.

Female breeder genotype		Male breeder genotype		PROGENY GENOTYPE				
HET	x	HET		WT	HET	HOMO KI	Tot	
			Females	2	5	5	12	
			Males	7	5	1	13	
			Tot	9	10	6	25	
HOMO	x	HET		WT	HET	HOMO KI	Tot	
			Females	0	8	1	9	
			Males	0	2	7	9	
			Tot	0	10	8	18	
HOMO	x	HOMO		WT	HET	HOMO KI	Tot	
			Females	0	0	4	4	
			Males	0	0	6	6	
			Tot	0	0	10	10	

Table 2. List of top 20 hits of IP/MS from RanBP9-TT MEFs.

Rank	Protein ID	Protein Name	PEPTIDE COUNTS	
			RanBP9-TT	RanBP9 WT
1	P69566	RANB9	25	0
2	O89050	MKLN1	17	1
3	Q8C6G8	WDR26	10	0
4	Q9D7M1	GID8	10	0
5	Q9DBR3	ARMC8	10	0
6	P22777	PAI1	8	0
7	Q4VC33	MAEA	8	0
8	Q80YX1	TENA	7	0
9	Q9ESX4	NO40	4	0
10	Q6VN19	RBP10	4	0
11	Q80YQ8	RMD5A	4	0
12	P21981	TGM2	4	0
13	Q9CPY6	GID4	4	0
14	P62700	YPEL5	3	0
15	P02468	LAMC1	2	0
16	Q61001	LAMA5	2	0
17	Q99K41	EMIL1	2	0
18	Q9R118	HTRA1	2	0
19	Q91YQ7	RMD5B	2	0
20	Q5SWU9	ACACA	1	0