

Computational Simulation of 4-D Micro-Circular Network in Zebrafish Tail Amputation and Regeneration

Mehrdad Roustaei^{1,2}, Kyung Baek^{1,2}, Zhaoqiang Wang^{1,2}, Susana Cavallero², Sandro Satta², Angela Lai², Ryan O'Donnell², Vijay Vedula³, Yichen Ding⁴, Alison Marsden⁵, Tzung Hsiai^{*1,3,6}

¹ Department of Bioengineering, University of California, Los Angeles, Los Angeles, CA

² Division of Cardiology, Department of Medicine, David Geffen School of Medicine at UCLA, Los Angeles, CA

³ Department of Mechanical Engineering, Columbia University, New York, NY

⁴ Department of Bioengineering, University of Texas Dallas, TX

⁵ Department of Pediatrics and Bioengineering, Stanford University, CA

⁶ Division of Cardiology, Department of Medicine, Greater Los Angeles VA Healthcare System, Los Angeles, CA

*Corresponding author:

Tzung K. Hsiai

Department of Medicine and Bioengineering, UCLA

10833 Le Conte Ave., CHS17-054A

Los Angeles, CA 90095-1679

Email: Thsiai@mednet.ucla.edu

Abstract

Wall shear stress (WSS) in micro-vasculature contributes to biomechanical cues to regulate mechanotransduction underlying vascular development, repair, and homeostasis. We hereby elucidate the interplay between hemodynamic shear forces and luminal remodeling in response to vascular injury and regeneration in the zebrafish model of tail amputation. Using the transgenic *Tg(fli-1:eGFP; Gata1:ds-red)* line, we were able to track the enhanced green-fluorescent protein (eGFP)-labeled endothelial lining of the 3-D microvasculature for post-image segmentation and reconstruction of fluid domain for computational fluid dynamics (CFD) simulation. At 1 day post amputation (dpa), dorsal aorta (DA) and posterior cardinal vein (PCV) were severed, and vasoconstriction developed in the dorsal longitudinal anastomotic vessel (DLAV) with a concomitant increase in WSS in the segmental vessels (SV) proximal to the amputation site and a decrease in WSS in SVs distal to amputation. Simultaneously, we observed angiogenesis commencing at the tips of amputated DLAV and PCV where WSS was minimal in the absence of blood flow. At 2 dpa, vasodilation occurred in a pair of SVs proximal to amputation, resulting in an increase in flow rate and WSS, whereas in the SVs distal to amputation, WSS normalized to the baseline. At 3 dpa, flow rate in the arterial SV proximal to amputation continued to rise and merged with DLAV that formed a new loop with PCV. Thus, our CFD modeling uncovered a well-coordinated micro-vascular adaptation following tail amputation, accompanied by the rise and fall of WSS and the dynamic changes in flow rate during vascular regeneration.

Key words: Microvascular injury and regeneration, Hemodynamic shear stress, Non-Newtonian Index, vascular remodeling

Introduction

Biomechanical forces modulate vascular morphological adaptation during development (1, 2). While the mechanotransduction mechanisms underlying arterial inflammatory responses and oxidative stress are well-elucidated in the macro-scale in association with high Reynolds number flow (3), much less is known about the interplay between hemodynamic forces and vascular remodeling in the micro-scale in association with low Reynolds number flow (4, 5). While endothelial dysfunction in the microvasculature is well-recognized in myocardial ischemia, diabetes, and peripheral artery diseases (PAD) (6-8), investigation into vascular injury-mediated changes in hemodynamic forces and adaptive vascular remodeling in the microvasculature remained an experimental challenge.

Zebrafish (*Danio Rerio*) embryos are transparent for light microscopic imaging and genetically tractable for studying shear stress-mediated myocardial and vascular development (9). We have established the 4-D light-sheet fluorescent microcopy (LSFM) to study the development of cardiac trabeculation during zebrafish cardiac morphogenesis (10, 11). Combining LSFM and computational fluid dynamics (CFD), we have provided the biomechanical insights into wall shear stress (WSS)-mediated endocardial trabeculation and outflow tract valvulogenesis in embryonic zebrafish (12-14). Thus, we sought to use the transgenic zebrafish *Tg(fli1:eGFP; Gata1:ds-red)* line, in which enhanced green fluorescent protein-labeled endothelium allows for segmentation of 3-D vasculature and *ds-red*-labeled red blood cells (erythrocytes) for CFD reconstruction and micro particle image velocimetry (PIV).

Wall shear stress (WSS) intimately regulates mechanotransduction underlying vascular development, repair, and homeostasis (15). The spatial and temporal variations in fluid shear stress in the segmental vessels (SVs) of zebrafish embryos modulate the transformation of arterial to

venous vessels, leading to a balanced distribution of arterial and venous SVs during vascular development (16). In this context, zebrafish microvascular network is considered to be an equivalent circuit model consisting of dorsal aorta (DA), segmental vessels (SVs), and posterior cardinal vein (PCV), and this model allows for simulating the microvascular response to blood cell partitioning in each SV, leading to uniform flow distribution (17, 18). However, this zero-dimensional resistance modeling negated bidirectional flow in dorsal longitudinal anastomotic vessel (DLAV) network, and vascular remodeling, including constriction and dilation, as well as angiogenesis of the dorsal longitudinal anastomotic vessel (DLAV) and posterior cardinal vein (PCV) to form a new loop following tail amputation. This zero-dimensional modeling also overlooks the local variations in vessel diameter in association with the hemodynamic resistance in the microvasculature. For this reason, our FCD modeling sought to account for the hemodynamic resistance for accurate estimation of WSS and luminal interaction.

We hereby demonstrate a 3-D CFD model that encompassed of 4 time-lapse stages of vessel regeneration following tail amputation, and subsequent loop formation between DA and PCV. We employed sub-micron *eGFP*-labeled vascular endothelium by confocal images and *ds-Red*-labeled red blood cells to reconstruct the computational model and to predict the interplay between hemodynamic changes vascular morphological remodeling and. We unraveled a coordinated vascular adaptation to tail amputation that disconnected dorsal artery (DA) from PCV, followed by DLAV vasoconstriction at 1 day post amputation (dpa), and SV dilation at 2 dap, coupled with the rise and fall of WSS and the hemodynamic changes in flow rates. At 3 dpa, flow rate in the arterial SV proximal to amputation continued to rise and merged with DLAV to form a new loop with PCV. Thus, elucidating the interplay between shear forces and luminal remodeling provides new biomechanical insights into the micro-scale hemodynamics, with translational implications in

vascular injury and repair under low Reynolds number flow in diabetes and peripheral arterial disease.

Materials and Methods

Zebrafish (*Danio Rerio*) has the capacity to regenerate, providing a genetically tractable model to study changes in microcirculation in response to vascular development, injury, and regeneration (19-21). We performed tail amputation on embryonic zebrafish to assess the dynamic changes in wall shear stress (WSS) and in flow rates in response to microvascular adaptation and remodeling proximal to the amputation site. The investigation of hemodynamic changes and morphological remodeling was established by imaging the transgenic *Tg(fli1:eGFP; Gata1:ds-red)* zebrafish embryos from 4 to 7 days post fertilization (dpf) (**Fig. 1a-c**), followed by post-imaging segmentation (**Fig. 1d, e**), and 3-D computational fluid dynamics (CFD) simulation (**Fig. 1g, h**). The enhanced green fluorescent protein (*eGFP*)-labeled endothelial cells expressed vascular endothelial growth factor (VEGF) receptor, denoted as *fli1*, and the *ds-red*-labeled red blood cells (erythrocytes) allowed for tracking their movement. Thus, sequential analyses from stitching of the 3-D confocal imaging to computational modeling to particle imaging velocity (PIV) validated the hemodynamic changes proximal to the amputation site, vascular constriction and dilation, and new vessel formation (angiogenesis) in response to tail amputation (**Fig. 1**).

Transgenic Zebrafish Model

The transgenic *Tg(fli1:eGFP; Gata1:ds-red)* embryos were rinsed with fresh standard E3 medium and cultivated at 28.5°C for 4 days after fertilization. Standard E3 medium was supplemented with 0.05% methylene blue (Sigma Aldrich, MO) to prevent fungal outbreak and 0.003% phenylthiourea (PTU, Sigma Aldrich, MO) to reduce melanogenesis. At 4 days post

fertilization (dpf), embryos were randomly selected for immobilization with neutralized tricaine (Sigma Aldrich, MO) to undergo tail amputation. Zebrafish responses to anesthesia were monitored by the movement of the caudal fin. The tail was amputated at $\sim 100 \mu\text{m}$ distally. Following amputation, embryos were returned to fresh E3 medium and maintained for 3 days.

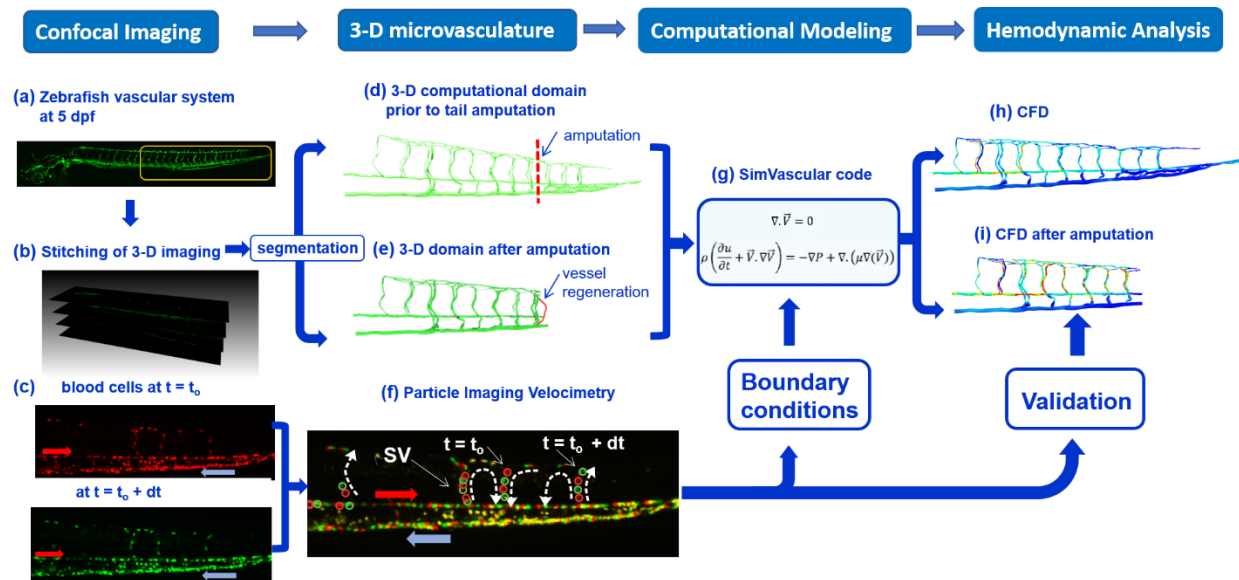


Fig. 1 A pipeline of post-imaging segmentation, simulation, and validation for computational fluid dynamics (CFD). (a) Confocal microscopy was used to image the vascular system from a transgenic *Tg (fli:eGFP)* zebrafish embryo at 5 days post fertilization (dpf). The vasculature was visualized via the enhanced green fluorescent protein (eGFP)-labeled endothelial cells that express VEGF receptor, *fli1*. (b) Stitching of the 3-D confocal images provided reconstruction of the vasculature for post-imaging segmentation. (c) The *ds-red* labeled blood cells (*gata1:ds-red*) in the zebrafish tail microvasculature were monitored at two different time points. The motion of *ds-red*-labeled blood cells allowed for quantitative assessment of the blood flow at $t = t_0$ and $t = t_0 + dt$ in the microvascular network. Following segmentation, 3-D computational domain was reconstructed (d) prior to and (e) after tail amputation. (f) Particle image velocimetry (PIV) was performed to track the individually *ds-red*-labeled blood cells in the segmental vessels (SV) from $t = t_0$ to $t = t_0 + dt$. (g) SimVascular finite element code was employed to solve the steady-state Navier-Stokes equations for incompressible fluid, and boundary conditions were derived from PIV. (h) CFD analyses revealed wall shear stress prior to and after tail amputation. The magnitude of velocity in SVs was validated by PIV.

Post-amputation Imaging of Blood Flow and Microvasculature

The images of red blood cells (*Gata1:ds-Red*) transport were captured by the inverted immunofluorescence microscope (Olympus, IX70) and digital CCD camera (QIclick, Teledyne Qimaging, Canada). We performed time-lapsed imaging from 4 dpf (days post fertilization) to 7 dpf or 0 to 3 days post amputation (dpa) for both the amputated and control fishes (amputation =

7; control = 5). The acquired images revealed the motion of erythrocytes in the microvasculature throughout multiple cardiac cycles.

The transgenic zebrafish *Tg(fli1:eGFP; Gata1:ds-red)* line was employed to capture *GFP*-labeled endothelium lining of the microvasculature undergoing remodeling following amputation from 4 to 7 dpf. The confocal-imaging system (Leica TCS-SP8-SMD) provided the submicron resolution in 3 dimensions (~500 nm in-plane and in z direction) for segmentation of the 3-D microvasculature. To reach this resolution, we stitched the high magnification (64x) images at 4-7 dpf or 1-3 dpa, and we used 5 dpf for segmentation of the tail microvascular network.

Segmentation of Microvascular Network

We used the 3-D *GFP*-labeled images of endothelial lining to reconstruct the computational domain in SimVascular (**Fig. 1b**) (22). The pathline of each vessel was produced by connecting the points in the center of the lumen along the vessel in the 3-D image stack. For each vessel, the cross-section was calculated by interpolation of the manually specified points on the wall/lumen interface ($1D \rightarrow 2D$). Linking the cross-section areas along the vessel path with a spline function, we reconstructed each vessel in the network ($2D \rightarrow 3D$). Overall, we generated the vascular network for 21 segmental vessels (SVs), 20 dorsal longitudinal anastomotic vessels (DLAVs), dorsal aorta (DA), posterior cardinal vein (PCV), and capillary venous plexus (**Fig. 1d, e**).

Particle Image Velocimetry for the Boundary Conditions and Validation

We developed and implemented the PIV code on *ds-Red*-labeled red blood cells. To determine the boundary conditions for the inlet (DA) and to validate the results, we measured the velocity in DA and individual SVs. Our custom-written PIV algorithm was able to correlate with the intensity distribution of *ds-Red*-labeled erythrocytes in different time frames. A 2-D continuous polynomial function was fitted to the correlation distribution, and the position of the maximum correlation was

determined from the polynomial function between two time frames. At 20 frames per second (CCD camera), the computed erythrocyte position allowed for estimating the velocity in DA and SVs (**Fig. 1c, f**).

-D Computational Modeling

3-D finite element method (FEM) for CFD analysis was applied to investigate the blood flow in microvascular network at low Reynolds number. The Navier-Stokes equations were solved to quantify the hemodynamic changes in response to tail amputation and vascular regeneration from 0 to 3 dpa (4-7 dpf) (**Fig. 1g**). In the setting of Low Reynolds number ($Re = \frac{\rho VD}{\mu} \cong 5 \times 10^{-4} \ll 1$, where D is defined as the vessel diameter) in the microvascular network, where the viscous force is dominant over the inertial forces, and the diameters and lengths of the vessels governed the pressure distribution and flow rates. Due to the low Reynolds number ($Re_{cell} = \frac{\rho VD_{cell}}{\mu} \cong 10^{-5} \ll 1$, where D is defined as the erythrocyte diameter), the pathway of the *ds-Red*-labeled erythrocytes followed the streamline of blood flow. Unlike the anucleous red blood cells in the mammalian circulation, zebrafish erythrocytes contained nuclei, and thus, less deformable.

Despite the time-dependent nature of blood flow in zebrafish microcirculation, the Womersley number (ratio of transient inertial force to viscous force: $\alpha = \sqrt{\frac{\omega \rho D^2}{\mu}} \cong 5 \times 10^{-3} \ll 1$) was small, and the time-dependent terms in the Navier-Stokes equations were neglected in our continuum modeling. Considering the incompressible flow, the simplified governing equations are defined as follows:

$$-\nabla P + \nabla \cdot (\mu \nabla \vec{V}) = 0 \quad (1)$$

$$\nabla \cdot \vec{V} = 0 \quad (2)$$

where \vec{V} is the velocity vector, μ is viscosity, and P is the hydrodynamic pressure.

We calculated the inlet velocity into DA during a cardiac cycle using the PIV code, and the time-averaged magnitude of $V_{ave} = 238 \mu\text{m}\cdot\text{s}^{-1}$ was applied as the inlet boundary condition. Given the small Womersley number ($\alpha \ll 1$), a fully developed polynomial function was considered in the inlet of DA (red arrow in **Fig. 1f**). A zero-pressure boundary condition was applied in the outlet of PCV (blue arrow in **Fig. 1f**). A non-slip boundary condition was assumed on the vessel walls.

To assess the non-Newtonian effects of micro-circulation, we considered a non-Power-law in a non-Newtonian viscosity model:

$$\mu = \mu_0 \dot{\gamma}^{n-1} \quad (3)$$

where μ is blood viscosity, $\dot{\gamma}$ the shear rate, μ_0 the consistency index, and n the power-law index. We employed $\mu_0 = 1.05 \times 10^{-3} \text{ Pa}\cdot\text{s}^n$ and $n = 1.09$ for the power-law equation as previously reported (23). We further analyzed the non-Newtonian effects on the flow rates and wall shear stress (WSS) in SVs by performing a parametric study based on the power-law index (n).

Results

Segmentation of 3-D microvasculature

Following 3-D stitching of the con-focal images from the intact and amputated zebrafish tail, we performed segmentation of the microvascular network (**Fig. 2.a-b**). Next, 3-D computational domain was reconstructed to simulate hemodynamic changes in response to tail amputation and vascular regeneration. The square box indicates the region of interest (ROI) for vascular segmentation and simulation (**Fig. 2.a**). A representative 3-D computational domain was acquired from the segmentation process (**Fig. 2.c-d**). The pressure drop across the venous plexus was deemed to be negligible due to both the short vessel length and low hemodynamic resistance.

These considerations allowed for connecting the venous SV with the PCV for segmentation through the largest venous plexus.

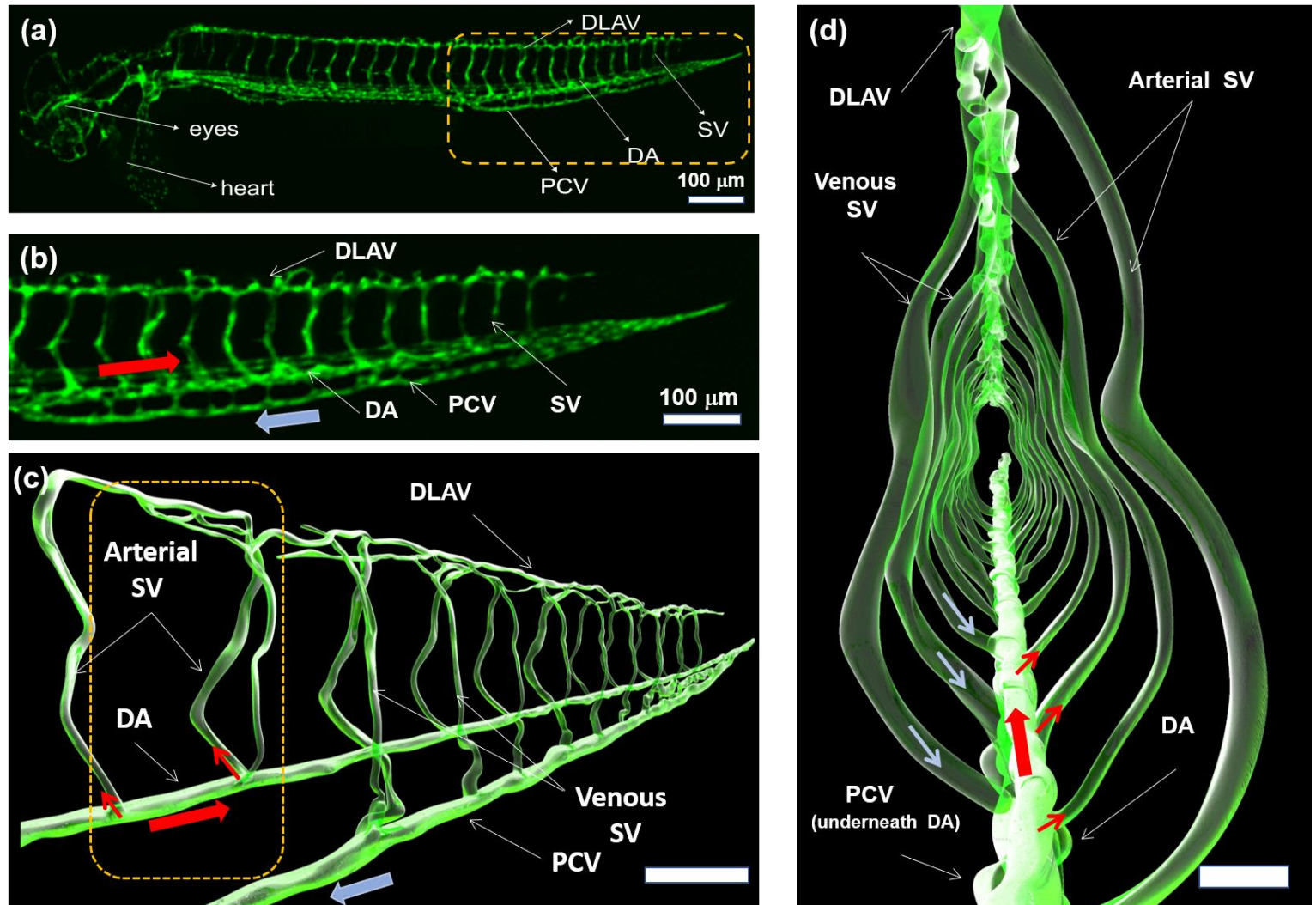


Fig. 2 (a) Transgenic *Tg(fli1:GFP)* zebrafish line was used to visualize the 3-D vascular network. The dashed rectangle (yellow) indicates the tail region from which vascular network was reconstructed for CFD simulation. (b) Magnification of the tail region depicts the flow direction in the dorsal aorta (DA) in relation to posterior cardinal vein (PCV). (c) Representative segmentation of the 3-D vasculature recapitulates DA, SV, DLAV, and PCV. (d) Magnification of the yellow rectangle reveals the cross-section of the tail region where the vascular connectivity occur between DLAV and PCV and between DA and SVs. Note that arterial SVs branch off from the DA, whereas venous SVs drain into PCV.

While DLAVs are commonly assumed to be a single straight vessel for unidirectional flow, bidirectional flow occurs in the DLAVs in parallel (**Supplementary Video S1-S2**). For this reason, a parallel pattern was proposed for the DLAVs according to their interconnection in the reconstructed vascular network (**Fig. 3.b and Supplementary Fig. S1**). Thus, we demonstrate a

pair of DLAVs in parallel, intersecting with the arterial and venous SV (in blue and red) to regulate the blood flow between SVs.

Vascular Remodeling Proximal to Tail Amputation Site

Confocal images revealed remodeling of the vessels and changes in blood flow from 0 to 3 days post-amputation (**Fig. 3**). At 0-1 dpa, DLAVs underwent vasoconstriction, accompanied by a reduction in blood flow in the SVs proximal to the amputation site while both DLAV and PCV started to form a new connection toward the tail region (**Supplementary Fig. S2 and Video S3-S4**) (24). At 0-1 dpa, SVs proximal to the amputation site (SV # $a+1$, $a+2$, where a denotes the number of SVs that were removed after amputation) underwent statistically significant vasodilation (SV # $a+1$ and SV # $a+2$, $p < 0.0001$, $n=61$), whereas the diameter variations in the SVs distal from the amputation site (SV # $> a+3$) remained statistically unchanged (SV # $a+3$ to # $a+6$, $p > 0.05$, $n= 61$) (**Fig. 3.d-e, Supplementary Video S4**). At 2 dpa, the DLAV proximal to SV# $a+1$ started to form a new loop with PCV (**Fig. 3.c and Supplementary Video S5-S6**). At 3 dpa, vasodilation in SV # $a+1$ and # $a+2$ attenuated in conjunction with the complete loop formation between DLAV and PCV, allowing for vascular regeneration to restore blood flow in the tail (**Fig. 3.c and Supplementary Video S7-S8**). Thus, we unveil micro-circular remodeling proximal to the tail amputation site, where the diameters of DLAV reduced at 1 dpa, followed by increased diameters in arterial SV # $a+1$ and # $a+2$, with concomitant angiogenesis in DLAV and PCV to form a new loop at 2 dpa, followed by normalization of SV diameter when a new loop connected the arterial and venous circulation.

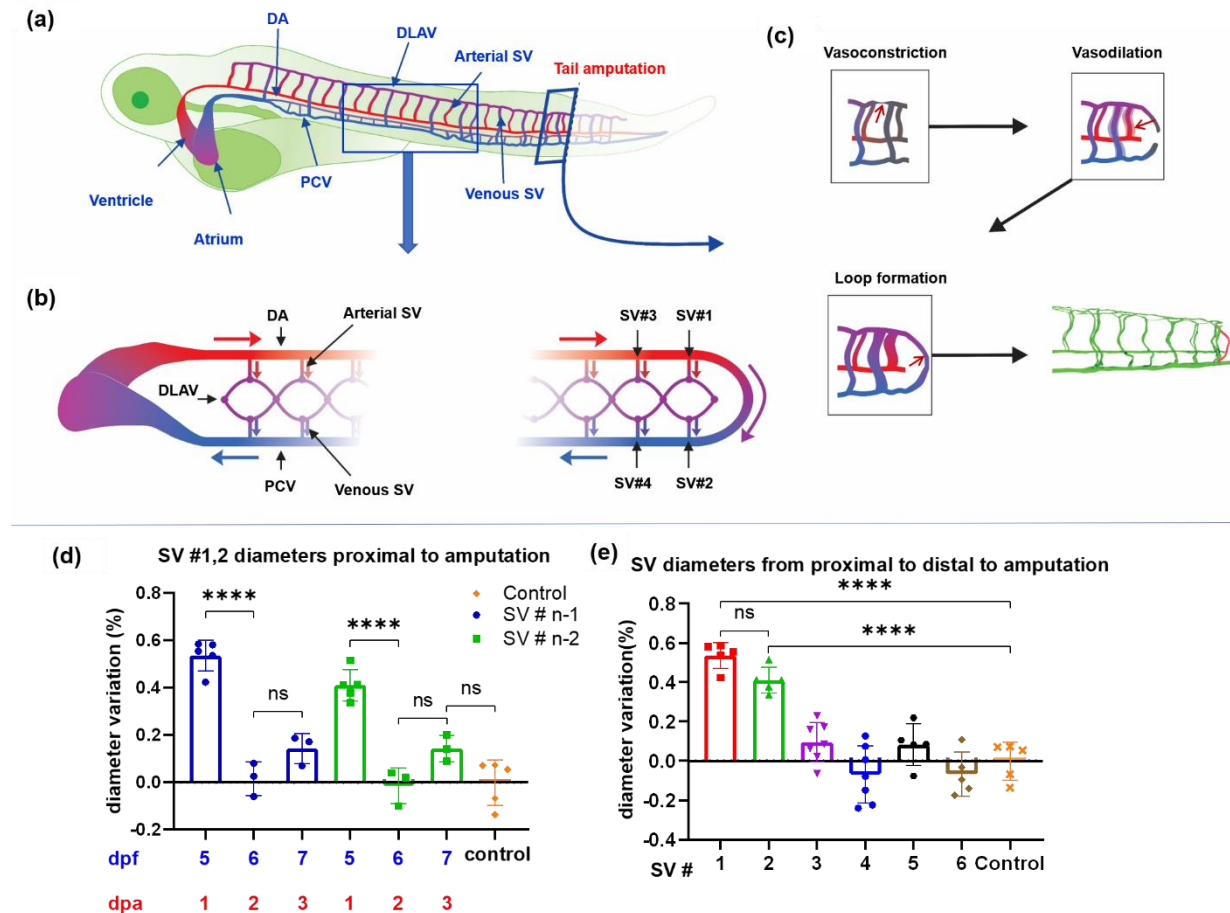


Fig. 3. Zebrafish embryonic cardiovascular circulatory system in response to tail amputation and regeneration. **(a)** Arterial circulation is denoted in red and venous in blue. Two regions were magnified to reveal vascular network; namely, top view and tail amputations. **(b)** The top view reveals that DA originates from the ventricle, and PVC returns to the atrium. Arterial segmental vessels (SV) connect with DLAVs, which drain to PCV via venous SV. **(c)** The tail amputation site (side view) illustrates SVs undergoing vasoconstriction, vasodilation, and loop formation proximal to amputation at 1, 2, 3 days post amputation (dpa). The proximal SVs were numbered from #1 to #6. **(d)** The changes in proximal SV diameters were compared from 0 dpa to 3 dpa. Both SV#1 and SV#2 underwent significant changes in diameter due to vasoconstriction at 1 dpa and vasodilation at 2 dpa ($p < 0.05$ vs. control, $n=5$). The changes at 3 dpa were statistically insignificant. **(e)** Changes in diameters were significant to the proximal SV#1 and SV#2 as compared to the distal SV#3-6. NS: Non-Significance, DA: dorsal aorta, SV: segmental vessels, DLAV: dorsal longitudinal anastomotic vessel, and PCV: posterior cardinal vein.

Particle Image Velocimetry to Validate CFD

To validate our CFD model for low Reynolds number flow in the tail region, we performed particle image velocimetry (PIV) to obtain the mean velocity of blood flow in the SVs from proximal to distal to the amputation site. CFD simulation revealed velocity ranging from 130 to 550 $\mu\text{m}\cdot\text{s}^{-1}$,

which was comparable to the order of magnitude obtained by PIV (**Fig. 4.e**). The CFD results deviated from those of PIV by ~8%, and the velocity magnitude of the most distal SV #15 was significantly higher than that of the proximal SVs, indicating a good agreement with the experimental data.

Changes in the Hemodynamic Parameters Prior to Tail Amputation

The 3-D CFD simulated the wall shear stress (WSS), pressure gradients, velocity profiles, and flow rates in the individual SVs. Our model verified the unique pattern of blood flow that recirculates between two SVs in parallel (**Supplementary Video S1-S2**). The blood velocity and flow rate in DA decreased toward the tail region where arterial blood flow drains into the SVs and DLAV. Thus, this compartmental increase in hemodynamic resistance in both the SVs and DLAVs toward the tail region results in a decrease in flow rate in the DA.

Our 3-D simulation further demonstrated the bidirectional flow in the DLAVs in parallel (see **Fig. 3b and Supplementary Video S2**). The flow direction in each DLAV was regulated by the pressure difference between the arterial and venous SVs corresponding to the diameter distribution in SVs under Stokes flow ($Re \cong 10^{-3}$). As a result, the combination of DLAVs in parallel and SVs in various diameters modulated the flow rates and WSS (**Fig. 5.d**). The flow rate in each SV was primarily regulated by the changes in diameters of the arterial and venous SVs and the interconnecting DLAV (**Fig. 4.d,f**). Taken together, our *in-silico* model predicted that small changes in the arterial SV diameter and its branching vessels regulate the direction of blood flow in the micro-circular network.

Changes in WSS in Response to Tail Amputation and Regeneration

We simulated and compared the changes in flow rates and WSS in the vascular network under the Stoke flow from 4 dpf (pre-amputation) to 7 dpf (3 dpa - loop formation) (**Fig. 4**). Next, we compared the changes in the area-averaged WSS (mean WSS) and flow rates in SVs following tail amputation (**Fig. 5.b-c**). At 0 to 1 dpa, we used the transgenic Tg (*flil:eGFP*) zebrafish line where vascular endothelial growth factor (VEGF) receptors expressed in the vascular endothelial cells were encoded with the enhanced green fluorescent protein. We were able to visualize the DLAVs proximal to the amputation site undergoing vasoconstriction, restricting blood flow, along with a reduction in WSS in SVs #7-8 (**Supplementary Fig. S2 and Video S2**). Our simulation further showed that WSS increased following tail amputation in the rest of SVs between 0 to 1 dpa (**Fig. 5.a-e**). This increase was preferentially higher in the arterial SVs (i.e. SV #9, 12) than in the venous SVs (i.e. SV #10, 11) as the former experienced the pressure variation upstream from the DLAV (**Fig. 5.e**). At 0 - 1 dpa, the eGFP-labeled images revealed that DLAV and PCV formed 75% of the new vessel length while proximal SVs (SV #7, 8) developed a relatively low WSS due to DLAV vasoconstriction and the average WSS in the rest of the SVs was elevated (**Fig. 5.a-e**).

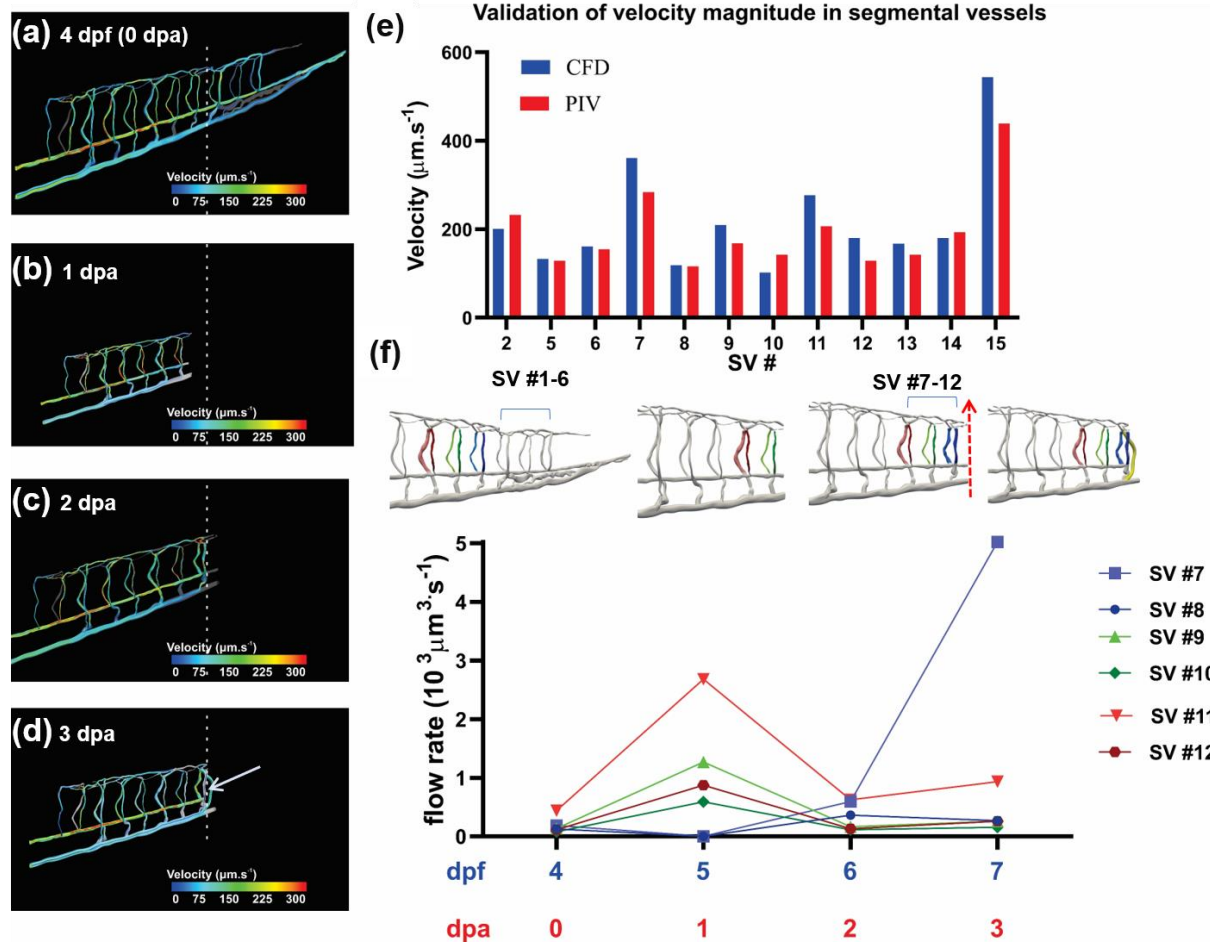


Fig. 4. Computational Fluid Dynamics (CFD) simulates changes in hemodynamic responses to tail injury and regeneration. Velocity streamlines in the computational domain were color-coded by the velocity magnitude (a) at 4 dpf prior to tail amputation or 0 days post amputation (dpa), (b) 1 dpa, (c) 2 dpa, and (d) 3 dpa. Arrow indicates vascular repair with a loop formation. (e) Variations in velocity from the proximal to distal SVs were compared between CFD and particle imaging velocimetry (PIV) prior to tail amputation. (f) The dynamic changes in flow rates developed from the proximal to distal SVs before (4 dpf or 0 dpa) and after tail amputation (5-7 dpf or 1-3 dpa). Note that flow rate in SV #7 increased at 3 dpa when DLAP formed a loop with PCV.

Simulation of blood flow at 2 dpa predicted that vasodilation of the proximal SVs (SV #7-8), and subsequent new loop connecting DLAV with PCV resulted in a proximal increase in flow rates and normalization in WSS in vascular network (**Fig. 5. c, e and Supplementary Video S5**). However, WSS and flow rates in the distal SVs decreased at 2 dpa to forestall further SV dilation (**Fig. 5.c, e**). Our simulation also predicted that vasodilation increased the flow rate ($Q = \int \vec{V} \cdot d\vec{A}$,

where Q is flow rate, V is velocity and A is cross section) proximal to the amputation site (SV #7-8) while the reduction in WSS further attenuated SV dilation ($WSS = \mu \frac{\partial V}{\partial r_{r=R}}$, where μ is viscosity, and r is the radius). Thus, our model demonstrates that SV dilation mediated a reduction in WSS (**Fig. 3.f and Fig. 5.e**).

The CFD model captured the loop formation of the regenerated vessel occurring distal to the arterial SV proximal to the amputation site (SV# 7). This SV supplied the arterial flow to DLAV, which underwent angiogenesis to form a new loop with PCV (**Fig. 4.d, Fig. 5.d**). This flow path (DA→SV #7→DLAV→regenerated vessel→PCV) decreased the blood supply to the rest of the SVs and DLAVs, leading to the DA→PCV loop formation, and an increase in flow rates and WSS in the arterial SV proximal to amputation (**Fig. 4.d, f and Fig. 5.d, e**). However, the blood flow to the venous SV proximal to the amputation site was reduced by the new loop between DLAV and PCV, resulting in a reduced WSS (**Fig. 4.d, f and Fig. 5.d, e**). Overall, CFD simulation demonstrated the changes in flow rate and WSS in response to the variation in SV diameters and flow rates needed to restore micro-circulation following tail amputation and regeneration.

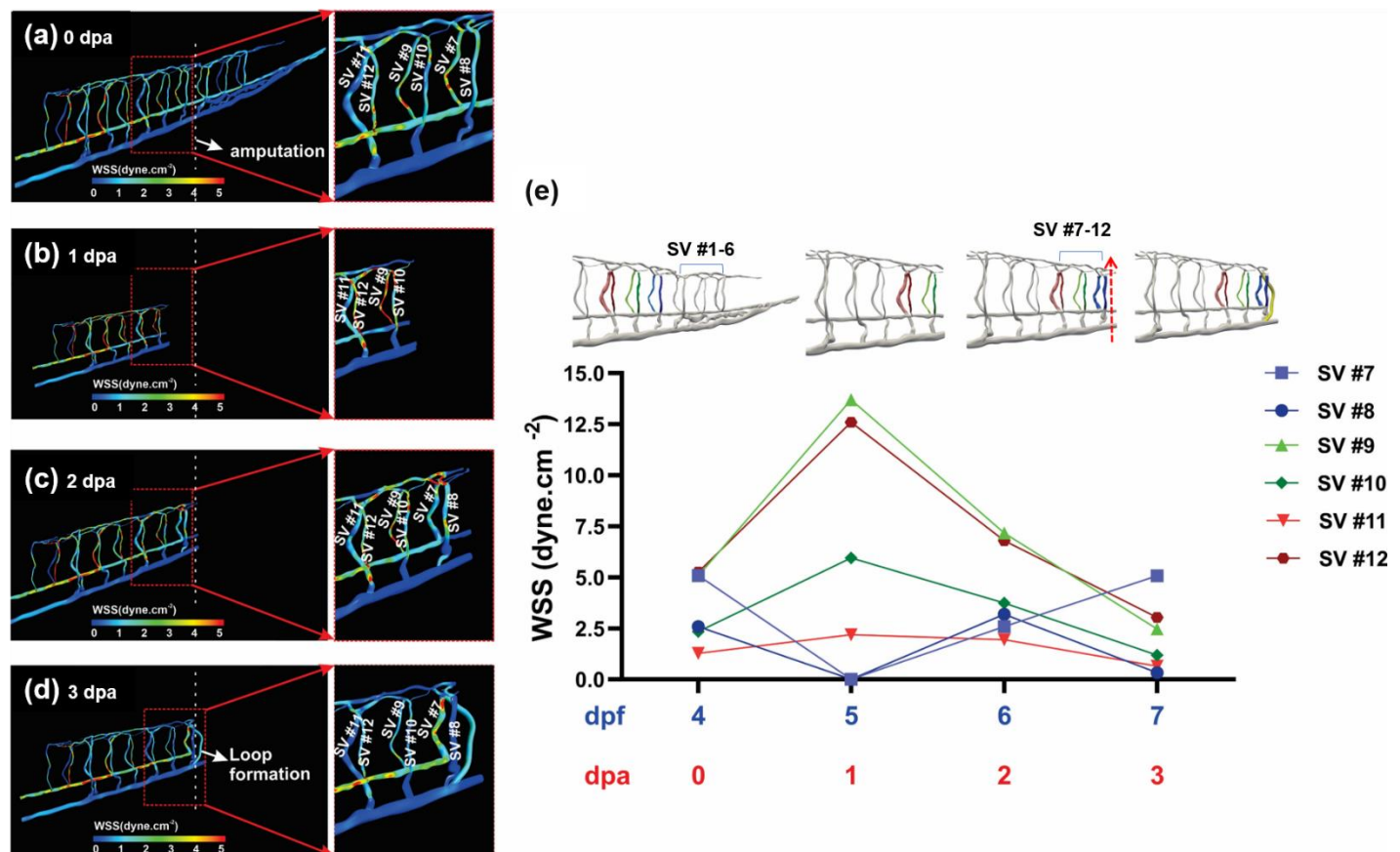


Fig. 5. CFD simulated changes in wall shear stress (WSS) in response to tail amputation and regeneration. (a) Relatively high WSS developed in the distal arterial SVs at 4 dpf prior to tail amputation. (b) An increase in WSS occurred in the proximal SV following tail amputation at 1-2 dpa. (c) An increase in WSS developed in the DLAV and arterial SV proximal to amputation site, along with a reduction in WSS in the rest of SVs at 2 dpa. (d) A reduction in WSS developed in distal SVs in response to a loop formation connecting DLAV with PCV at 3 dpa. (e) The mean WSS from the distal SV were compared prior to and post tail amputation, followed by loop formation at 3 dpa.

The Non-Newtonian Effects on the Flow Rates and Wall Shear Stress

From the power law model, we assessed the effects of non-Newtonian index on the microcirculation. We normalized the results according to the reported value for non-Newtonian index ($n = 1.09$). The normalized mean WSS in SVs were compared with different non-Newtonian indexes (**Fig. 6.a, c**). Our parametric study indicates the non-linear effect of non-Newtonian index on WSS, and $n = 1.09$ indicates an optimum condition (**Fig. 6.c**). Similarly,

the flow rates in SV exhibited the comparable trend (**Fig. 6.b**), and the overall circulation of blood was independent of the non-Newtonian behavior.

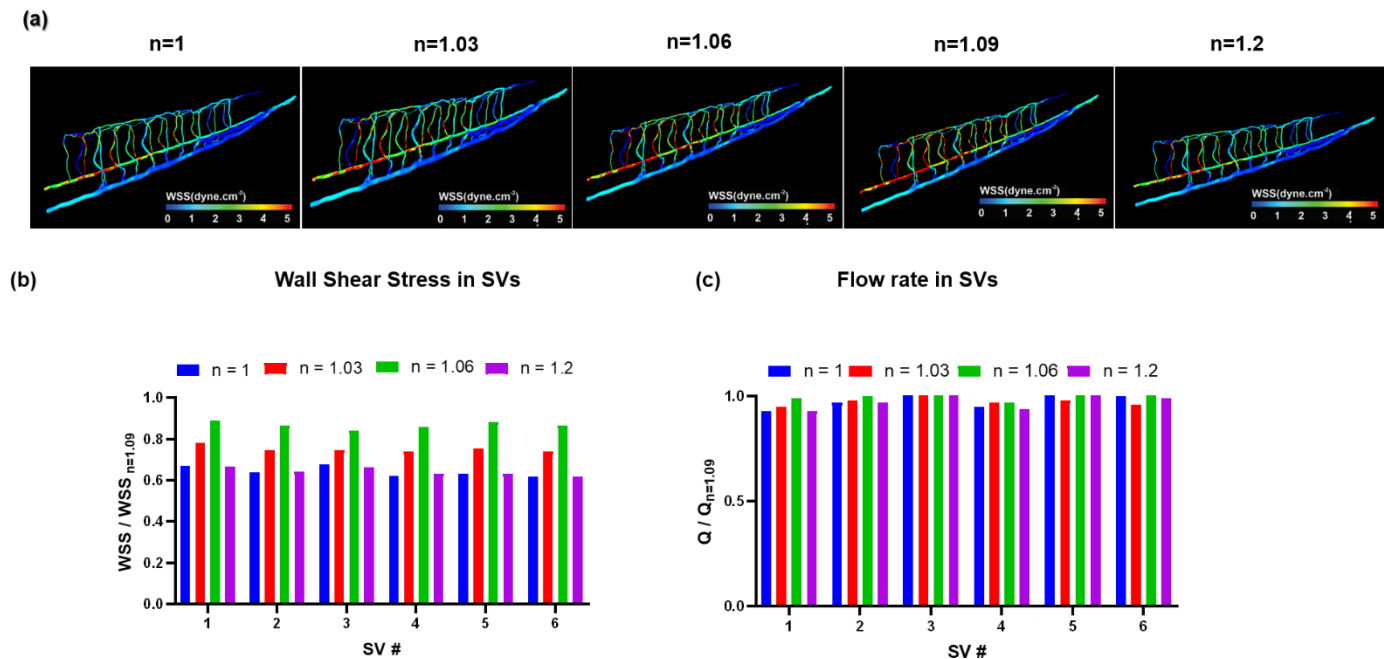


Fig. 5. The effects of non-Newtonian Index (n) from 1 to n=1.2. (a) The non-dimensionalization was performed using the experimental index at n=1.09. Variations in WSS and flow rates were non-linear. The highest value for WSS was obtained using standard value n=1.09. (a) Dimensionless wall shear stress and (b) flow rates were compared from proximal to distal SVs.

We demonstrate the WSS contours as compared to n from 1 to 1.2 (**Fig. 6.a**). The overall blood flow to the microvasculature was not altered by the non-Newtonian indices.

Discussion

Fluid shear stress imparts both metabolic and mechanical effects on vascular endothelial function (3). During development, hemodynamic forces such as shear stress are intimately linked with cardiac morphogenesis (25). We have demonstrated that peristaltic contraction of the embryonic heart tube produces time-varying shear stress ($\partial\tau/\partial t$) and pressure gradients (∇P) across the

atrioventricular (AV) canal in a transgenic zebrafish *Tg(fli-1:eGFP; Gata1:ds-red)* model of cardiovascular development (1). The advent of zebrafish genetic system has enabled the application of *fli1* promoter to drive expression of enhanced green fluorescent protein (eGFP) in all vasculature throughout embryogenesis (26); thereby, allowing for 3-D visualization for CFD simulation. By integrating 3-D reconstruction of confocal images with CFD simulation, we unraveled the interplay between wall shear stress (WSS) and microvascular adaptation in response to tail amputation and vascular regeneration. Tail amputation resulted in disconnection between DA and PCV, that triggered a well-coordinated DLAV vasoconstriction, accompanied with the initial decrease in WSS and flow rate in the SVs proximal to the amputation site. Simultaneously, an increase in WSS and flow rate in the SVs distal to amputation site developed due to bypass of the blood from DA during 0-1 dpa. WSS normalized to baseline in the SVs during vasodilation at 2dpa when DLAV and PCV formed a new loop at 3 dpa, whereas flow rates in arterial SV merged with DLAV and continued to rise. Thus, our data provide the new hemodynamic insights in micro-circular network injury and repair under low Reynolds numbers.

Hemodynamic shear forces are well-recognized to modulate endothelial homeostasis (27, 28), migration (29), vascular development and regeneration (30). At a steady state, shear stress (τ) is characterized as dynamic viscosity (μ) of a fluid multiplied by its shear rate ($\dot{\gamma}$), defined as the tangential velocity gradient (3): $\tau = \mu \cdot \dot{\gamma} = \mu \frac{\partial u_x}{\partial y}$. The Zebrafish system allows for genetic manipulations of viscosity to alter shear stress (12, 21, 31). We previously reported that injection of *GATA-1a* oligonucleotide morpholino (MO) to inhibit erythropoiesis resulted in a decrease in viscosity-dependent shear stress, and subsequent impaired vascular regeneration following tail amputation (32). After *TNNT-2* MO injection to inhibit myocardial contraction and blood flow, zebrafish embryos also failed to develop tail regeneration at 3 dpa, whereas injection of

erythropoietin (Epo) mRNA activates erythrocytosis to increase viscosity, resulting in restored vascular regeneration (**Supplementary Video S5**) (32). Thus, the rise and fall of WSS in adaptation to vascular remodeling in SV and DLAV proximal to the amputation site occurred during the formation of a new loop connecting between DLAV and PCV.

Our computational modeling was developed from the dynamic adaptation of vessel morphology to tail injury and vascular regeneration in the micro-scale under low Reynolds numbers. Choi *et al.* studied the variation in WSS in an embryonic zebrafish tail using an equivalent circuit model (18), and they demonstrated changes in WSS in the microvascular network by partially occluding the blood flow in SVs. Chang *et al.* further proposed to incorporate the hemodynamic resistance of individual blood cells in the SVs toward the tail region (17). However, this zero-dimensional resistance modeling negated vascular remodeling-associated changes in flow rates and WSS. Given the Stokes flow condition in zebrafish micro-circulation, the variations in vessel diameter are pivotal for determining the low Reynolds number hemodynamics. For this reason, our CFD model addressed vasoconstriction and vasodilation, and vascular regeneration in the microvascular network, demonstrating a spatiotemporal-dependent modeling of vascular injury and repair *in vivo*.

Spatial and temporal variations in WSS have been recognized to modulate vascular endothelial function and homeostasis. WSS in the microcirculation regulate the canonical Wnt/ β -catenin signaling pathway for vascular development (21, 33), and WSS-activated Notch signaling modulates endothelial loop formation and endocardial trabeculation (12, 19, 32). We have previously developed the light-sheet imaging to study the development of trabeculation for zebrafish ventricles (10, 11). Combining light-sheet microscopy and computational fluid dynamics (CFD), we assessed the role of wall shear stress (WSS) in formation of trabeculation and outflow

tract valvulogenesis in embryonic zebrafish (12-14). In this CFD modeling of vascular injury and repair, we further demonstrate the integration of CFD with genetic zebrafish system to uncover microvascular mechanics.

Blood effective viscosity provides the rheological basis to compute wall shear stress underlying cardiovascular morphogenesis. During development, blood viscosity regulates fluid shear stress to impart mechano-signal transduction to initiate cardiac trabeculation and outflow tract formation (12, 25). However, the minute amount of zebrafish blood renders measurements of blood viscosity experimentally challenging (34). We previously reported the capillary pressure-driven principle to develop microfluidic channels for measuring the small-scale blood viscosity (23), allowing for establishing a power-law non-Newtonian model to predict the transient rise and fall of viscosity during embryonic development. In this context, we further analyzed the non-Newtonian effects on the flow rates and wall shear stress in SVs by performing a parametric study based on the power-law index (n) (**Supplementary Fig. S1**). From the power law model, we normalized the results according to the reported value for non-Newtonian index ($n = 1.09$) (23). Our results indicate that despite local variations in WSS, the blood flow in micro-circulation was not significantly altered by the non-Newtonian indices. Overall, we unraveled the interplay between vascular remodeling and WSS in the face of tail amputation. Our CFD simulation was corroborated with micro PIV, providing translational implications in micro-vascular injury and repair in diabetes and peripheral arterial disease.

Acknowledgments: The present work was funded by the National Institutes of Health R01HL083015 (TKH), R01HL111437 (TKH), R01HL129727 (TKH), R01HL118650 (TKH), and VA MERIT AWARD I01 BX004356 (TKH).

1. Lee J, Moghadam ME, Kung E, Cao H, Beebe T, Miller Y, Roman BL, Lien C-L, Chi NC, Marsden AL. Moving domain computational fluid dynamics to interface with an embryonic model of cardiac morphogenesis. *PloS one*. 2013;8(8):e72924.
2. Poelmann RE, Gittenberger-de Groot AC. Hemodynamics in cardiac development. *Journal of cardiovascular development and disease*. 2018;5(4):54.
3. Lee J, Packard RRS, Hsiai TK. Blood flow modulation of vascular dynamics. *Current opinion in lipidology*. 2015;26(5):376.
4. Kaski J-C, Crea F, Gersh BJ, Camici PG. Reappraisal of ischemic heart disease: fundamental role of coronary microvascular dysfunction in the pathogenesis of angina pectoris. *Circulation*. 2018;138(14):1463-80.
5. Omori T, Imai Y, Kikuchi K, Ishikawa T, Yamaguchi T. Hemodynamics in the microcirculation and in microfluidics. *Annals of biomedical engineering*. 2015;43(1):238-57.
6. Beckman JA, Duncan MS, Damrauer SM, Wells QS, Barnett JV, Wasserman DH, Bedimo RJ, Butt AA, Marconi VC, Sico JJ. Microvascular disease, peripheral artery disease, and amputation. *Circulation*. 2019;140(6):449-58.
7. Brownrigg JR, Hughes CO, Burleigh D, Karthikesalingam A, Patterson BO, Holt PJ, Thompson MM, de Lusignan S, Ray KK, Hinchliffe RJ. Microvascular disease and risk of cardiovascular events among individuals with type 2 diabetes: a population-level cohort study. *The Lancet Diabetes & Endocrinology*. 2016;4(7):588-97.
8. Van Der Laan AM, Piek JJ, Van Royen N. Targeting angiogenesis to restore the microcirculation after reperfused MI. *Nature Reviews Cardiology*. 2009;6(8):515-23.
9. Fei P, Lee J, Packard RRS, Sereti K-I, Xu H, Ma J, Ding Y, Kang H, Chen H, Sung K. Cardiac light-sheet fluorescent microscopy for multi-scale and rapid imaging of architecture and function. *Scientific reports*. 2016;6(1):1-12.
10. Ding Y, Ma J, Langenbacher AD, Baek KI, Lee J, Chang C-C, Hsu JJ, Kulkarni RP, Belperio J, Shi W. Multiscale light-sheet for rapid imaging of cardiopulmonary system. *JCI insight*. 2018;3(16).
11. Fei P, Nie J, Lee J, Ding Y, Li S, Zhang H, Hagiwara M, Yu T, Segura T, Ho C-M. Subvoxel light-sheet microscopy for high-resolution high-throughput volumetric imaging of large biomedical specimens. *Advanced Photonics*. 2019;1(1):016002.
12. Lee J, Fei P, Packard RRS, Kang H, Xu H, Baek KI, Jen N, Chen J, Yen H, Kuo C-CJ. 4-Dimensional light-sheet microscopy to elucidate shear stress modulation of cardiac trabeculation. *The Journal of clinical investigation*. 2016;126(5):1679-90.
13. Vedula V, Lee J, Xu H, Kuo C-CJ, Hsiai TK, Marsden AL. A method to quantify mechanobiologic forces during zebrafish cardiac development using 4-D light sheet imaging and computational modeling. *PLoS computational biology*. 2017;13(10):e1005828.
14. Hsu JJ, Vedula V, Baek KI, Chen C, Chen J, Chou MI, Lam J, Subhedar S, Wang J, Ding Y. Contractile and hemodynamic forces coordinate Notch1b-mediated outflow tract valve formation. *JCI insight*. 2019;4(10).
15. Souilhol C, Serbanovic-Canic J, Fragiadaki M, Chico TJ, Ridger V, Roddie H, Evans PC. Endothelial responses to shear stress in atherosclerosis: a novel role for developmental genes. *Nature Reviews Cardiology*. 2020;17(1):52-63.
16. Weijts B, Gutierrez E, Saikin SK, Ablooglu AJ, Traver D, Groisman A, Tkachenko E. Blood flow-induced Notch activation and endothelial migration enable vascular remodeling in zebrafish embryos. *Nature communications*. 2018;9(1):1-11.

17. Chang S-S, Tu S, Baek KI, Pietersen A, Liu Y-H, Savage VM, Hwang S-PL, Hsiai TK, Roper M. Optimal occlusion uniformly partitions red blood cells fluxes within a microvascular network. *PLoS computational biology*. 2017;13(12):e1005892.
18. Choi W, Kim HM, Park S, Yeom E, Doh J, Lee SJ. Variation in wall shear stress in channel networks of zebrafish models. *Journal of The Royal Society Interface*. 2017;14(127):20160900.
19. Lee J, Vedula V, Baek KI, Chen J, Hsu JJ, Ding Y, Chang C-C, Kang H, Small A, Fei P. Spatial and temporal variations in hemodynamic forces initiate cardiac trabeculation. *JCI insight*. 2018;3(13).
20. Baek KI, Packard RRS, Hsu JJ, Saffari A, Ma Z, Luu AP, Pietersen A, Yen H, Ren B, Ding Y. Ultrafine particle exposure reveals the importance of FOXO1/Notch activation complex for vascular regeneration. *Antioxidants & redox signaling*. 2018;28(13):1209-23.
21. Li R, Beebe T, Jen N, Yu F, Takabe W, Harrison M, Cao H, Lee J, Yang H, Han P. Shear stress-activated Wnt-Angiopoietin-2 signaling recapitulates vascular repair in zebrafish embryos. *Arteriosclerosis, thrombosis, and vascular biology*. 2014;34(10):2268-75.
22. Updegrove A, Wilson NM, Merkow J, Lan H, Marsden AL, Shadden SC. SimVascular: an open source pipeline for cardiovascular simulation. *Annals of biomedical engineering*. 2017;45(3):525-41.
23. Lee J, Chou T-C, Kang D, Kang H, Chen J, Baek KI, Wang W, Ding Y, Di Carlo D, Tai Y-C. A rapid capillary-pressure driven micro-channel to demonstrate newtonian fluid behavior of zebrafish blood at high shear rates. *Scientific reports*. 2017;7(1):1-8.
24. Baek KI, Chang S-S, Chang C-C, Roustaei M, Ding Y, Wang Y, Chen J, Odonnelle R, Chen H, Ashby JW. Vascular Injury Changes Topology of Vessel Network to Adapt to Partition of Blood Flow for New Arteriovenous Specification. *bioRxiv*. 2020.
25. Hove JR, Köster RW, Forouhar AS, Acevedo-Bolton G, Fraser SE, Gharib M. Intracardiac fluid forces are an essential epigenetic factor for embryonic cardiogenesis. *Nature*. 2003;421(6919):172-7.
26. Lawson ND, Weinstein BM. In vivo imaging of embryonic vascular development using transgenic zebrafish. *Developmental biology*. 2002;248(2):307-18.
27. Kluge MA, Fetterman JL, Vita JA. Mitochondria and endothelial function. *Circulation research*. 2013;112(8):1171-88.
28. Sun X, Feinberg MW. Regulation of endothelial cell metabolism: just go with the flow. *Am Heart Assoc*; 2015.
29. Wang Y, Zang QS, Liu Z, Wu Q, Maass D, Dulan G, Shaul PW, Melito L, Frantz DE, Kilgore JA. Regulation of VEGF-induced endothelial cell migration by mitochondrial reactive oxygen species. *American Journal of Physiology-Cell Physiology*. 2011;301(3):C695-C704.
30. De Bock K, Georgiadou M, Carmeliet P. Role of endothelial cell metabolism in vessel sprouting. *Cell metabolism*. 2013;18(5):634-47.
31. Kumar S, Hedges SB. A molecular timescale for vertebrate evolution. *Nature*. 1998;392(6679):917-20.
32. Baek KI, Li R, Jen N, Choi H, Kaboodrangi A, Ping P, Liem D, Beebe T, Hsiai TK. Flow-responsive vascular endothelial growth factor receptor-protein kinase c isoform epsilon signaling mediates glycolytic metabolites for vascular repair. *Antioxidants & redox signaling*. 2018;28(1):31-43.
33. Li R, Baek KI, Chang C-C, Zhou B, Hsiai TK. Mechanosensitive pathways involved in cardiovascular development and homeostasis in zebrafish. *Journal of vascular research*. 2019;56(6):273-83.

34. Zhang L, Alt C, Li P, White RM, Zon LI, Wei X, Lin CP. An optical platform for cell tracking in adult zebrafish. *Cytometry Part A*. 2012;81(2):176-82.