

Microbiota supplementation with *Bifidobacterium* and *Lactobacillus* modifies the preterm infant gut microbiota and metabolome

Cristina Alcon-Giner^{1#}, Matthew J. Dalby^{1#}, Shabhonam Caim¹, Jennifer Ketskemety¹, Alex Shaw², Kathleen Sim², Melissa Lawson¹, Raymond Kiu¹, Charlotte Leclaire¹, Lisa Chalklen¹, Magdalena Kujawska¹, Suparna Mitra^{1,3}, Fahmina Fardus-Reid⁴, Gustav Belteki⁵, Katherine Lloyd⁶, Jonathan R. Swann⁴, J. Simon Kroll², Paul Clarke^{6,7}, Lindsay J. Hall^{1*}.

¹ Quadram Institute Bioscience, Norwich Research Park, Norwich, UK

² Department of Medicine, Section of Pediatrics, Imperial College London, London, UK

³ Leeds Institute of Medical Research, University of Leeds, Leeds, UK

⁴ Department of Surgery and Cancer, Faculty of Medicine, Imperial College London, London, UK

⁵ Neonatal Intensive Care Unit, The Rosie Hospital, Cambridge University Hospitals NHS Foundation Trust, Cambridge, UK

⁶ Neonatal Intensive Care Unit, Norfolk and Norwich University Hospital, Norwich, UK

⁷ Norwich Medical School, University of East Anglia, Norwich, UK

Joint first author

* Corresponding author

Abstract

Supplementation with members of the early-life microbiota or ‘probiotics’ is becoming increasingly popular to attempt to beneficially manipulate the preterm gut microbiota. We performed a large longitudinal study comprising two preterm groups; 101 orally supplemented with *Bifidobacterium* and *Lactobacillus* (Bif/Lacto) and 133 non-supplemented (Control) matched by age, sex, birth-mode, and diet. 16S rRNA metataxonomic profiling on stool samples (n = 592) indicated a predominance of *Bifidobacterium*, and a reduction of pathobionts in the Bif/Lacto group. Metabolic phenotyping found a parallel increase in fecal acetate and lactate in the Bif/Lacto group compared to the Control group, which positively correlated with *Bifidobacterium* abundance consistent with the ability of the supplemented *Bifidobacterium* strain to metabolize human milk oligosaccharides and reduced gut pH. This study demonstrates that microbiota supplementation can modify the preterm microbiome and the gastrointestinal environment to more closely resemble that of a full-term infant.

Introduction

Premature birth, defined as infants born <37 weeks gestation, accounts for 1 in 9 births globally¹. Preterm infants are often born via Caesarean-section, have an underdeveloped immune system, receive numerous courses of antibiotics, and reside in neonatal intensive care units (NICUs); all of which disrupt the establishment of the early life gut microbiota^{2,3}. This altered gut microbial ecosystem has been linked to an increased risk of serious morbidity during the NICU stay, including necrotizing enterocolitis (NEC)⁴ and late onset sepsis (LOS)⁵, and later life health problems such as asthma and eczema^{6,7}. Abnormal patterns of bacterial colonization are common in the preterm infant gut which is dominated by potentially pathogenic bacteria (i.e. pathobionts) such as *Staphylococcus*, *Klebsiella*, *Escherichia*, and

Clostridium. These infants are also characterized by a low abundance or absence of beneficial *Bifidobacterium* and *Lactobacillus*, that are characteristic of the full-term infant gut. Thus, interventions to ‘normalize’ the preterm gut microbiota are an attractive proposition to improve health and prevent disease in preterm infants.

Oral administration of commensal infant bacteria via ‘probiotic⁸’ supplementation is one approach to encourage gut colonization of early life dominant microbiota members. Importantly, supplementation of preterm infants with *Bifidobacterium* or *Lactobacillus* has been reported to protect against NEC^{9,10} and LOS¹¹. While large scale clinical studies have demonstrated the potential of probiotics to reduce NEC incidence, this has rarely been accompanied with in-depth longitudinal profiling to determine the impact of this type of supplementation on gut microbiota composition and metabolome of preterm infants. Thus, we compared longitudinal samples from two cohorts of preterm infants; 101 orally supplemented with a combination of *Bifidobacterium* and *Lactobacillus* and 133 non-supplemented infants. Cohorts were matched by gestational age, sex, delivery method, sample collection time, and diet across four tertiary-level NICUs. 16S rRNA gene profiling was used to determine the fecal bacterial composition ($n = 592$) and paired ¹H nuclear magnetic resonance (NMR) spectroscopy was used to measure the metabolic content of the fecal samples, this included metabolites of microbial, host, and maternal origin ($n = 157$). To evaluate colonization potential whole genome sequencing was used to compare supplemented strains to isolates obtained from preterm infants, alongside *in vitro* studies to define underlying mechanisms governing preterm microbiota profiles.

Results

Study design

Fecal samples were collected from NICU-resident premature infants receiving a daily oral supplementation containing *Bifidobacterium bifidum* and *Lactobacillus acidophilus* (Bif/Lacto group), and from a group of similar aged premature infants (Control group) from three other NICUs that did not offer routine supplementation. This study design avoided cross-contamination amongst the study groups, which has been reported previously in other probiotic studies^{12,13} where study groups reside within the same NICU. Samples were collected corresponding to four time points at 0-9, 10-29, 30-49, and 50-99 days of age from birth (Fig. 1a).

Supplementation with early life microbiota members influences preterm gut microbiota composition

The preterm gut is typically dominated by pathobionts such as *Enterobacter*, *Escherichia*, and *Klebsiella*¹⁴. We sought to determine whether preterm infants supplemented with *Bifidobacterium* and *Lactobacillus*, bacterial species associated with a healthy term infant gut, showed a modified preterm microbiota profile. Fecal metataxonomic bacterial composition was determined by 16S rRNA gene sequencing. Genus level clustering of samples using non-metric multidimensional scaling (NMDS) indicated clear variation in the microbiota profiles between Bif/Lacto supplemented infants and Controls (Fig. 1b-c; Supp Fig. 1a-b). The microbiota composition of Bif/Lacto and Control sample differed significantly at each of the four time points (PERMANOVA, $P < 0.01$). The clustering of the Bif/Lacto group was driven by the genus *Bifidobacterium*, while the genera driving the clustering of the Control group included *Staphylococcus*, *Escherichia*, and *Klebsiella* (Fig. 1b-c; Supp Fig 1a-b). Notably, while hospital NICUs may differ in their 'environmental' microbiota in ways that may influence infant colonization, NMDS and PERMANOVA tests showed no differences in the microbiota composition between infant samples from the three Control hospital NICUs (Supp Fig. 2a-d).

We also examined the ten most abundant genera by relative abundance at each time point using Bray-Curtis dissimilarity (Fig. 1d-e; Supp Fig. 1c-d), showing infant samples clustered into six main groups based on a single dominant bacterial genus; *Bifidobacterium*, *Escherichia*, *Enterococcus*, *Klebsiella*, *Staphylococcus*, or *Streptococcus*. These data indicate that the introduction of *Bifidobacterium* promote changes in the composition of the preterm gut microbiota.

Oral Bif/Lacto supplementation influences bacterial genus abundance and bacterial diversity

We sought to further define the genus composition based on relative abundance and diversity measures underlying these changes in microbiota composition. *Bifidobacterium* dominated the microbiota of the Bif/Lacto group with high relative abundance at all time points compared to the Control group (Fig. 2a-c). This indicated 'efficient' colonization by the supplemented strain, or ecosystem re-modeling to encourage colonization of other *Bifidobacterium* spp. Surprisingly, *Lactobacillus* was only detected in a minority of infants, but with a higher relative abundance in Bif/Lacto infants compared to the Control group at all time points (Fig. 2d), which may indicate a more transient and limited colonization potential for this strain. The relative abundance of bacteria such as *Klebsiella*, *Escherichia*, and *Enterobacter* was lower in Bif/Lacto infants compared to Control infants at earlier time points 0-29 days of age (Fig. 2e-g), with *Klebsiella* still lower at 30-99 days of age (Fig. 2e). *Staphylococcus* was initially abundant in both groups, but rapidly decreased as the infants aged (Fig. 2a-b; Supp Fig. 6f)¹⁵. Species level analysis of the 16S rRNA data matched the *Staphylococcus* present to *S. epidermidis* and *S. haemolyticus*, bacterial residents on the skin, indicating that these originate from initial colonization of skin-associated bacteria (Supplementary Fig. 6g-h). Indeed, the skin-associated commensal *Cutibacterium* was also found in higher relative abundance in Control infants at 10-29 days of age (Fig. 2h). These data suggest that the

oral supplementation impacts the microbial colonization patterns, displacing other potentially pathogenic bacteria more typical of the preterm gut.

When examining diversity measures (Shannon and Inverse Simpson diversity), values were initially higher at 0-9 days in Bif/Lacto compared to Control infants (Supp Fig. 3b-c), although the abundance of *Bifidobacterium* was not correlated with the number of bacterial genera detected (Supp Fig. 3d). At later time-points (i.e. 30-99 days of age, Fig Supp Fig. 3b-c), the diversity values of the Bif/Lacto were lower than the Control group, which may correlate with the increasing *Bifidobacterium* abundance above 50% (Supp Fig. 3e-f, h-i). These data suggest there is a diversity 'tipping-point' in response to dominance of *Bifidobacterium* as the major early life member.

External factors including gestational age, birth weight, and antibiotics negatively affect

***Bifidobacterium* abundance in Bif/Lacto infants**

Previous studies have indicated that factors, such as gestational age and antibiotics¹⁶, significantly influence the developing early life gut microbiota; with preterm infants representing an infant cohort overexposed to potential microbiome-modulating factors. Focusing on *Bifidobacterium* as the dominant bacteria in the Bif/Lacto group, we noted that infants with a birth weight ≥ 1000 grams showed higher relative abundance of *Bifidobacterium* at 0-29 days (Fig. 3a). This was also the case at 10-29 days of age in infants born at a gestational age ≥ 28 weeks. (Fig. 3b). Furthermore, birth weight and gestational age were closely correlated (Fig. 3c) and correlated inversely with length of NICU stay (Supp Fig. 4e-f), indicating that the underdeveloped preterm gut may not represent an optimal niche for *Bifidobacterium* colonization. Higher *Bifidobacterium* proportions in Control infants with birth weights ≥ 1000 g compared to those of < 1000 g supports this hypothesis (Supp Fig. 4a).

Preterm infants receive numerous antibiotics over the course of their NICU stay. Within the Bif/Lacto infants *Bifidobacterium* abundance was lower in infants currently being treated with antibiotics at all time points compared to those not receiving antibiotics, indicating antibiotic susceptibility of this genus (Fig. 3d). In contrast, the relative abundance of *Staphylococcus*, *Klebsiella*, and *Escherichia* was unchanged in infants receiving antibiotics, suggesting these were resistant to antibiotic treatment (Supp Fig. 4i-k).

Emergency Caesarean sections for maternal or fetal indications account for a large number of preterm births, and previous studies have indicated that Caesarean-section delivery can directly interrupt the transfer of maternal microbes (e.g. *Bifidobacterium*) to infants¹⁷. Surprisingly, there was no significant difference in the relative abundance of *Bifidobacterium* within the Bif/Lacto group in infants born by vaginal or cesarean birth (Fig. 3e). Gestational age, current antibiotic treatment, and delivery method did not significantly alter *Bifidobacterium* proportions in Control infants, however the low abundance of this bacteria in this cohort make robust statistical analysis difficult (Supp Fig. 4b-d).

In Bif/Lacto infants, supplementation ceased when infants reached a post-conceptual age of 34 weeks. However, no reduction was observed in the relative abundance of *Bifidobacterium* in samples collected from these infants after oral supplementation had ceased (Fig. 3f), with proportions maintained for up to 60 days (Fig. 3g-i). This indicates potentially longer-term colonization of the supplemented strain in these infants.

Diet is proposed to be one of the major factors modulating the early life microbiota, with significantly differences between formula and breast-fed infants¹⁸. Unusually, almost all infants recruited to this study were fed either their own mothers' breast milk, or their mothers' breast milk and donor breast milk in combination, or breast milk supplemented with preterm cows' milk-based formula. Only a very small number of infants were exclusively formula fed (i.e. 4 out of 234), which may explain our findings

that the relative abundance of *Bifidobacterium* was unaffected by diet within both the Bif/Lacto or Control infant cohorts (Supp Fig. 4g-h).

Bif/Lacto infants shown distinct changes in species composition over time including prolonged colonization of the *Bifidobacterium bifidum* Infloran strain, which correlates with human breast milk metabolism and routine supplementation

Our data so far indicated a dominance of *Bifidobacterium* in the Bif/Lacto cohort, and poor colonization ability of *Lactobacillus* in the preterm gut. To probe this with greater resolution, we compared the abundance of species present within these two genera. *B. bifidum* was highly abundant in Bif/Lacto infants, while only being abundant in 2/133 Control infants (Fig. 4a). *Bifidobacterium breve* was also more abundant in the Bif/Lacto supplemented group (Supp Fig. 5a), with *Bifidobacterium longum* present in a small number of infants from both groups (Supp Fig. 5b). *B. bifidum* relative abundance declined with increasing infant age (Fig. 4a), with concurrent increases in *B. breve* (Supp Fig. 5a). As *B. breve* coexisted with, rather than replaced (Supp Fig. 5i) *B. bifidum* this suggests close species interactions; potentially via metabolite cross-feeding. In contrast, while the *Lactobacillus acidophilus* Infloran strain (for genome analysis see Supp Fig. 6d-e) was more prevalent in Bif/Lacto infants (Supp Fig. 5d), abundance decreased to zero within days after cessation of supplementation (Supp Fig. 5e-h), indicating inefficient colonization of this species.

Previous research studies have shown that colonization of the gut by probiotic bacteria may vary depending on the strains used, mode of administration, dose, and inclusion of prebiotics¹⁹. To confirm putative bifidobacterial supplemented strain colonization (as described above), we performed whole genome sequencing-based analysis to compare the *B. bifidum* Infloran strain to nine *Bifidobacterium*

isolates cultured from fecal samples from seven Bif/Lacto supplemented infants. Core-genome single nucleotide polymorphisms (SNPs) analysis indicated the five *B. bifidum* isolates were identical at 0 SNP difference (based on 87 core genes; Suppl. Fig. 6a). Reference-based genome-mapping of whole genome sequences of five *B. bifidum* genomes to *B. bifidum* Infloran strain (as reference genome, Fig 4b) indicated a near-identical similarity (mean pairwise SNPs: 2.80 ± 1.30), strongly suggesting they belong to the same bacterial strain (i.e. Infloran). Average nucleotide identity (ANI) analysis also supported these findings (100.00% nucleotide identity, Suppl. Fig 6b). These data support the elevated *B. bifidum* relative abundances in our 16S rRNA metataxonomic data (Fig. 4a), including after supplementation had finished in Bif/Lacto infants, indicating longer-term colonization of this strain (Fig. 4f-i).

Bifidobacterium represents a dominant genus in the full-term healthy breast-fed infant selectively fed by complex oligosaccharides (i.e. human milk oligosaccharides (HMOs)) within breast milk. However, the ability of *Bifidobacterium* to digest HMOs varies between species and strains of this genus²⁰. Thus, we analyzed *B. bifidum* genomes (our 5 isolates and Infloran strain) for the presence of genes involved in HMO utilization; all *B. bifidum* isolates contained specific genes involved in HMO utilization (Fig. 4e), and mucin degradation genes which may aid gut colonization (Suppl. Fig. 6c). Notably, growth curves in whole breast milk (Fig. 4c), confirmed that the *B. bifidum* Infloran strain utilized whole breast milk. Further phenotypic analysis indicated this strain was able to metabolize specific HMOs; 2-fucosyllactose (2'-FL) and Lacto-N-Neotetraose (LnNT), corresponding to genes *AfcA* and *BBgIII* respectively, encoding for extracellular enzymes involved in their utilization (Fig. 4d). Therefore, the ability to digest breast milk and HMOs in these predominantly breast milk fed infants, is likely to be a key factor driving high rates of *Bifidobacterium* colonization.

Bacterial strains used as probiotics commonly lack antibiotic resistance genes. However, in the NICU environment, which has high antibiotic prescription practices, this may reduce the colonization of

supplemented strains in the preterm gut. Analysis of the *B. bifidum* Infloran strain genome indicated the presence of only the intrinsic *ileS* gene (associated with mupirocin resistance, Supp Table 2a). Minimum antibiotic concentration testing confirmed sensitivity to commonly prescribed antibiotics in NICUs (Suppl Table 2b). These data are in agreement with the reduced relative abundance of *Bifidobacterium* in Bif/Lacto infants receiving antibiotics (Fig. 3d) However, by giving the supplement twice daily (up to 34 weeks post-conceptual age) this may have aided rapid re-establishment after antibiotic treatment and promoted relatively stable colonization.

Infants receiving oral supplementation show differences in metabolomic profiles and lower fecal pH

Microbial metabolites are key molecules involved in microbe-microbe and microbe-host interactions. To define the 'functional' impact of Bif/Lacto supplementation, ¹H nuclear magnetic resonance (NMR) spectroscopy was used to characterize the metabolomes of a subset of paired fecal samples (75 from Bif/Lacto group, and 81 from Control group; all timepoints; N = 157). A principal component analysis (PCA) model ($R^2 = 53.6\%$) was built using these metabolic phenotypes and clear biochemical variation was observed between the Bif/Lacto and Control samples (Fig. 5a). Pairwise orthogonal projection to latent structures-discriminant analysis (OPLS-DA) models constructed for each time point confirmed these metabolic differences throughout the study period (p values < 0.01, Suppl Fig. 7a). A covariate-adjusted-PLS-DA (CA-PLS-DA) model comparing the fecal profiles at all sampling points and adjusted for sampling age showed that infants in the Bif/Lacto group excreted greater amounts of the short chain fatty acid (SCFA) acetate (Fig. 5c) and lower amounts of the sugars 2'-FL, 3-fucosyllactose (3'-FL), arabinose, and trehalose compared to those in the Control group (Fig. 5e-h). Compared directly, fecal lactate was also higher in Bif/Lacto infants compared to Control infants (Fig. 5d). Notably, these differences observed were maintained throughout the study period.

The relative abundance of *Bifidobacterium* was found to be significantly positively associated with fecal acetate and negatively associated with fecal 2'-FL, 3'-FL, arabinose, and trehalose (Fig 5i). Acetate and lactate are known metabolic by-products of *Bifidobacterium*²¹, while 2'-FL and 3'-FL are common components of HMOs, with certain *Bifidobacterium* strains (including Infloran Fig 4e) able to selectively metabolize these breast milk components²². These results indicate that the higher relative abundance of *Bifidobacterium* in Bif/Lacto infants correlates with greater HMO metabolism, and with acetate and lactate generated as major end products.

To determine the impact of increased acetate and lactate on the infant gut environment, fecal pH was measured in a subset of infants (n = 74). At 0-9 days of age fecal pH was 5.5 (SD=0.7) in Bif/Lacto infants compared to pH 7.0 (SD=0.5) in Control infants. These differences in fecal pH remained throughout the study (Fig. 5j) and fecal pH was significantly negatively correlated with fecal acetate and lactate (Supp Fig. 7c-d) and the relative abundance of *Bifidobacterium* (Supp Fig. 7e). Comparing the relative bacterial abundance at species level, *B. bifidum* had a stronger negative correlation with fecal pH and positive correlation with fecal acetate and lactate (Supp Fig 8a-c) compared to *B. breve*, the other main *Bifidobacterium* species present (Supp Fig. 8d-f). Metabolomic analysis on bacterial culture supernatant confirmed the strong acetate producing ability of the supplemented strain *B. bifidum* (Supp Fig. 8g).

Discussion

Oral supplementation with *B. bifidum* and *L. acidophilus* in premature infants drives a fecal microbiota composition and environment more similar to a healthy full-term breast-fed infant. Crucially, we determined that certain clinical practices and relevant external factors may positively or negatively

influence the ability of introduced strains, particularly *Bifidobacterium*, to successfully establish a niche within the preterm infant gut microbiome.

As diet is a major driver of microbiota diversity, particularly the strong relationship between breastmilk and *Bifidobacterium* abundance, we were careful to match our study cohorts. Although both groups of premature infants received high rates of breast milk, via maternal or donor milk, the low abundance of *Bifidobacterium* found in Control infants indicates breast milk consumption itself (without supplementation), was not sufficient to encourage high rates of 'natural' *Bifidobacterium* colonization. Maternal to infant transmission of *Bifidobacterium* occurs in term infants^{23,24}, however the NICU environment and antibiotic treatment may limit establishment of parental *Bifidobacterium*, leaving infants susceptible to colonization by hospital-environmental bacteria²⁵. For the Bif/Lacto group, the combination of supplementation of early life microbiota members and a known prebiotic food source i.e. breast milk and HMOs, likely aided colonization. Crucially, this symbiotic approach was successful because the 'right' bacterial strain was matched to the appropriate nutritional environment. In this case a *B. bifidum* strain with the genetic potential to metabolize HMOs, and phenotypically shown to use these early life dietary sources for growth. Interestingly, previous studies show *B. bifidum* secretes extracellular enzymes that facilitate cross-feeding of oligosaccharide degradation products among other *Bifidobacterium* species²⁰. Furthermore, *B. bifidum* strains are known to breakdown mucin which may aid gut colonization²⁶. This personalized microbiota supplementation strategy, including genomic and phenotypic analysis of the probiotic strain, tailored to the nutritional environment of the receiving gut, is an important consideration for future studies.

Extremely low birth weight infants (<1000 g) represented the most vulnerable cohort in this study, and presented less abundance of genus *Bifidobacterium*, potentially due to several factors including; lengthened antibiotic courses²⁷, underdeveloped gut physiology (i.e. poorer gut motility, and thinner

mucus layer²⁸), and difficulties in establishing full enteral feeding²⁹. Indeed, previous clinical studies have had difficulties evaluating the beneficial effects of supplementation in this at-risk cohort of preterm infants^{30,31}. Notably, although extremely low birth weight Bif/Lacto infants had lower bifidobacterial abundance, supplementation in our study did enhance levels when compared to Control infants. Thus, from an intervention strategy perspective, daily and prolonged supplementation may contribute to faster (re)establishment of *Bifidobacterium*, which may also promote colonization resistance against exogenous or resident pathogens in this particularly fragile preterm cohort.

Surprisingly, *Bifidobacterium* abundance in supplemented infants was not affected by delivery mode (i.e. vaginal vs. caesarean-section). The early and frequent antibiotic treatment in preterm infants may create a 'naïve niche', which enables supplemented bifidobacterial strains to successfully colonize. Indeed, routine oral supplementation in Bif/Lacto infants may help to ameliorate caesarean delivery-associated bacterial alterations³² in the preterm microbiome. Follow-up studies in this infant cohort could determine if this also contributes to reducing diseases associated with caesarean delivery or prematurity such as asthma³³.

Rates of antibiotic prescription in preterms are remarkably high, ranging from 79% to 87% in extremely low birth neonates <1000 g^{34,35}. Antibiotic treatment favors the establishment of antibiotic-resistant bacteria, while indirectly eradicates highly susceptible microbiota members such as *Bifidobacterium*. A recent research study in term infants correlated abundance of *Bifidobacterium* species with a reduction in antimicrobial resistance genes and transferable elements³⁶. As Bif/Lacto infants were predominantly colonized by genus *Bifidobacterium*, this may have contributed to reduce the reservoir of potentially multidrug resistance pathogens (i.e. *Staphylococcus*, *Escherichia*, and *Klebsiella*), which were prevalent in Control infants.

Previous studies have indicated that although preterm infants are particularly at risk of serious diseases with an infectious aetiology (e.g. NEC and late onset sepsis), probiotic supplementation can reduce incidence. However, as highlighted above there are some notable exceptions, which may relate to the differences in strain(s) chosen, infant diet or infant age. Notably, a recent clinical audit in the same NICU where the oral supplementation was given (i.e. Norfolk and Norwich University Hospital), indicated a >50% reduction in NEC rates and late-onset sepsis when comparing 5-year epochs before and after introducing probiotic supplementation, with no episodes of probiotic 'sepsis' indicated³⁷. Whilst the processes leading to life-threatening conditions including NEC in premature infants are complex, overgrowth of potentially pathogenic bacteria is thought to be a key factor³⁸. We show that supplemented premature infants have lower relative abundance of pathobionts including *Klebsiella* and *Escherichia*, which have previously been linked to NEC and late onset sepsis. This may be due to direct inhibition through compounds secreted by *Bifidobacterium* (e.g. bacteriocins³⁹), competition for space and/or nutrients availability.

Changes in the gut environment were also indicated through our metabolomic analyses; highlighted by elevated abundance of acetate and lactate in feces from the Bif/Lacto Group, which are known to be primary metabolic end products of HMO degradation by *Bifidobacterium*⁴⁰. Acetate and lactate have beneficial health effects enhancing defense functions in host epithelial cells⁴¹ and mucosal dendritic cells⁴². The lower fecal pH detected in the Bif/Lacto Group correlated with higher amounts of these acids and higher abundance of *Bifidobacterium*, which may also create an unfavorable environment for overgrowth of pathobionts^{43 44}.

Alongside the key microbiological findings of this study, we have also provided context for further trials focusing on clinical practice in NICU and suggestions for future intervention studies in this at-risk infant population. A key strength relates to the size and scope of the study; representing one of the largest

reported longitudinal studies in preterm infants, where study cohorts were matched by gestational age, sex, birth-mode, time points of sample collection, and diet, which are all factors that may significantly impact the microbiota, and thus conclusions obtained. The use of high-throughput sequencing and metabolomic phenotyping, linked to clinical metadata, complemented by phenotypic studies, has allowed us to provide a comprehensive basis for the beneficial impact of Bif/Lacto supplementation on the wider microbiota over time, providing a more mechanism-orientated approach to our data analysis. Providing maternal and donor breast milk are essential practices required for successful gut colonization by *Bifidobacterium*, which also contributes to the enhanced metabolic end-products such as acetate and lactate in the preterm gut. These products will play an important role in direct antagonism of potentially pathogenic microbes, and the maturation of immune cells in early life. This large-scale longitudinal multi-center-controlled study emphasizes the important role that targeted microbiota or probiotic supplementation plays in preterm infants, exerting protective and functional effects on preterm gut microbial communities.

Online Methods

Study design

Two distinct preterm groups were recruited for this study: 1) Bif/Lacto Group who routinely received oral *Bifidobacterium* and *Lactobacillus* supplementation (n = 101 infants), and 2) Control Group infants who did not receive supplementation (n = 133 infants). Infants in the Bif/Lacto group were prescribed daily oral supplementation of 10^9 colony forming units (CFU) of *Bifidobacterium bifidum* and 10^9 CFU of *Lactobacillus acidophilus* (Infloran[®], Desma Healthcare, Chiasso, Switzerland). This supplementation was given twice daily in a divided dose and commenced with the first enteral colostrum/milk feed (usually

day 1 postnatal). Oral supplementation was normally administered until 34 weeks post-conceptual age, with the exception of very low birth weight infants (<1500 g) who received it until discharge. Half a capsule of Infloran (125 mg) was dissolved in 1 ml of expressed breastmilk and/or sterile water, and this dose was given twice daily (250mg/total/day) to the infant via nasogastric tube. Recruitment inclusion criteria included gestational age \leq 34 weeks, and infants resident in the same NICU for study duration. Infants diagnosed with advanced stages of necrotizing enterocolitis or severe congenital abnormalities, were excluded from the study.

Preterm infants were recruited from four different NICUs across England, UK; Norfolk and Norwich University Hospital (NNUH) enrolled the Bif/Lacto group, and Rosie Hospital, Queen Charlotte's and Chelsea Hospital, and St Mary's Hospital recruited Control group infants. All NICUs had comparable health care practices including antibiotic and antifungal policies. Bif/Lacto vs. Control groups included similar sex ratios, delivery mode (i.e. Caesarean-section or vaginal delivery) and feeding modes (Suppl Table 1). Specifically, we controlled for diet by preferably selecting preterm infants who received their mother's own breast milk or donor breast milk; majority were exclusively breastfed or received donor breast milk (78% in Bif/Lacto Group and 76% Control Group), mixed fed with a combination of breastmilk, formula or donor breast milk (20% Bif/Lacto Group and 20% Control Group), and exclusively formula fed (2% Bif/Lacto Group, and 4% Control Group).

Ethical approval for the study

Fecal collection from NNUH and Rosie Hospital was approved by the Faculty of Medical and Health Sciences Ethics Committee at the University of East Anglia (UEA), and followed protocols laid out by the UEA Biorepository (License no: 11208). Fecal collection for Queen Charlotte's and Chelsea Hospital and

St Mary's Hospital was approved by West London Research Ethics Committee (REC) under the REC approval reference number 10/H0711/39. In all cases, doctors and nurses recruited infants after parents gave written consent.

Time points of sample collection for this study included 0-9 days, 10-29 days, 30-49 days, 50-99 days.

Clinical data collected included gestational age, delivery mode, antibiotic courses received, and dietary information can be found in Supplementary Table 3.

DNA extraction of preterm stool samples

FastDNA Spin Kit for Soil (MP) was used to extract DNA from preterm feces following manufacturer instructions, with extended 3 min bead-beating. DNA concentration and quality were quantified using a Qubit® 2.0 fluorometer (Invitrogen).

16S rRNA gene sequencing: library preparation and bioinformatics analysis

16S rRNA region (V1-V2) primers were used for library construction (Suppl Table 4), with the following PCR conditions; cycle of 94°C 3 min and 25 cycles of 94°C for 45 s, 55°C for 15 s and 72°C for 30 s.

Sequencing of the 16S rRNA gene libraries was performed using Illumina MiSeq platform with 300 bp paired end reads.

Raw reads were filtered through quality control using trim galore (version 0.4.3), minimum quality threshold of phred 33, and minimum read length of 60 bp. Reads that passed threshold were aligned against SILVA database (version: SILVA_132_SSURef_tax_silva) using BLASTN (ncbi-blast-2.2.25+; Max e-value 10e-3) separately for both pairs. After performing BLASTN alignment, all output files were

imported and annotated using the paired-end protocol of MEGAN on default Lowest Common Ancestor (LCA) parameters.

R Studio version 1.1.463 and using the ggplot2 R package version 3.1.0 was used for the analysis of microbiota sequence data and generation of figures. The 16S rRNA bacterial sequence data was subsampled to an even depth of 20,000 read using phyloseq package version 1.24.2. Sample details with proportion of reads assigned to each bacterial genus can be found in Supplementary Table 6 and species in Supplementary Table 7. NMDS (Non-metric multidimensional scaling) plots were generated with a Bray-Curtis dissimilarity calculation in R Studio using with the vegan package version 2.5-4 using code adapted from Torondel et al. (2016)⁴⁵. Permutational MANOVA in the Adonis function of the vegan R package version 2.5-4 was used to determine significant differences between NMDS community structure. Heatmaps were generated using the ComplexHeatmap package version 1.18.1 and clustered using a Bray-Curtis dissimilarity calculation. Genus number, Shannon diversity, and Inverse Simpson diversity were calculated using the vegan package version 2.5-4. Statistically significant differences in genus and species abundance were determined using a Kruskal Wallance test with Family-Wise Error Rate using to correct for multiple testing. R scripts are available at: <https://github.com/dalbymj/BAMBI-Paper-Files>.

Genomic DNA Extraction from bacterial isolates

We isolated the strains present in the oral supplementation (i.e. *Bifidobacterium bifidum* and *Lactobacillus acidophilus*) as well as additional *Bifidobacterium* isolates from infant samples. Overnight pure cultures in Brain Heart Infusion Broth (BHI) were harvested for phenol-chloroform DNA extraction. Bacterial pellets were resuspended in 2 ml 25% sucrose in 10 mM Tris and 1 mM EDTA at pH 8. Cells were subsequently lysed adding 50 µl 100 mg/ml lysozyme (Roche) and incubating at 37 °C for 1 h. 100 µl 20 mg/ml Proteinase K (Roche), 30 µl 10 mg/ml RNase A (Roche), 400 µl 0.5 M EDTA (pH 8.0)

and 250 μ l 10% Sarkosyl NL30 (Fisher) was added into the lysed bacterial suspension, incubated 1 h on ice and left overnight at 50 °C. Next, washes of phenol-chloroform-isoamyl alcohol (PCIA, Sigma) using 15 ml gel-lock tubes (Qiagen), with E Buffer (10mM Tris pH 8 (Fisher Scientific, UK)) added to sample to a final volume of 5 ml, mixed with 5 ml of PCIA (Sigma) and centrifuged for 15 min at 4000 rpm. The CIA step was repeated three times, after which the final aqueous phase was transferred into sterile Corning™ 50 ml centrifuge tubes, and 2.5 volumes of ethanol (VWR Chemicals, USA) added, incubated for 15 min at -20 °C, and centrifuged 10 min at 4000 rpm and 4 °C. Finally, the pellet was washed twice with 10 ml of 70% ethanol and centrifuged at 4000 rpm for 10 min, dried overnight, and re-suspended in 300 μ l of E Buffer.

Whole genome sequencing analysis: library preparation and bioinformatics analysis

DNA from pure cultures was sequenced at Wellcome Trust Sanger Institute using 96-plex Illumina HiSeq 2500 platform to generate 125 bp paired end reads as described previously⁴⁶. Genome assembly was performed by the sequencing provider using the assembly pipeline described by Page et al. 2016⁴⁷. Next, genome assemblies were annotated using Prokka (version 1.12). We predicted the 16s rRNA gene from the whole genome data using barrnap (version 0.7) and compare it to with existing 16S rRNA sequences. Single nucleotide variants (SNPs) were identified using Snippy (version 4.0) by mapping assembled contigs to annotated reference Infloran *B. bifidum* strain to reconstruct SNP phylogeny of six *B. bifidum* strains⁴⁸.

To construct a phylogeny of 10 *Bifidobacterium* strains, we used pangenome pipeline Roary (version 3.12.0) to build a core gene alignment (87 core genes, with options -e -n otherwise default), followed by snp-sites (version 2.3.3) to call SNPs (6,202 SNPs in total)^{47,49}. We used the SNP site-alignments obtained

from both reference-based and core-gene alignment approaches to infer Maximum Likelihood (ML) phylogenies using RAxML (version 8.2.10) with GTR+ nucleotide substitution model at 100 permutations conducted for bootstrap convergence test⁵⁰. The ML tree reconstructed was with the highest likelihood out of 5 runs (option -N 5). Pairwise SNP distances were calculated and compared using snp-dists (version 0.2)⁵¹. Pairwise Average Nucleotide Identity (ANI) was computed and graphed using module pyani (version 0.2.7)⁵². Web tool iTOL was used to visualize and annotate ML trees⁵³.

Determination of Minimal Inhibitory Concentration (MIC) of *Bifidobacterium bifidum* Infloran strain

The microdilution method was used to test Minimal Inhibitory Concentration (MIC) of the probiotic strains (*B. bifidum*) against routinely prescribed antibiotics; benzylpenicillin, gentamicin, and meropenem. Serial twofold dilutions of antibiotics in MRS medium (Difco) and 10 µL from fresh overnight culture were incubated for 24 h at 37 °C under anaerobic conditions. Cell density was monitored using a plate reader (BMG Labtech, UK) at 595 nm. MICs were determined as the lowest concentration of antibiotic inhibiting any bacterial growth, with tests performed in triplicate.

Gene search using BLAST

Genomes from *B. bifidum* Infloran strain and five other *B. bifidum* isolates were searched for genes involved in utilization of human milk oligosaccharides, and mucin degradation. Nucleotide sequences of genes of interest were extracted from National Centre of Biotechnology Information (NCBI). Supplementary table 5 summarizes genes analyzed and publication source. BLAST alignment (ncbi-blast-2.2.25) was performed using a filtering criteria of 80% coverage and 80% identity.

Breast milk and human milk oligosaccharides utilization study

Growth kinetics of the Infloran isolate *B. bifidum* and control type strains *B. longum* subsp. *infantis* DSM 20088 and *B. breve* DSM 20213 in breast milk and individual HMOs (LNnT or 2'FL) were performed. Isolates were grown overnight in RCM (Oxoid) then subcultured into modified MRS (Difco) with breast milk (pooled from multiple mothers, 1% w/v), or individual HMOs (2% w/v). Growth kinetics were measured every 15 minutes for 48 hours using a microplate spectrophotometer (Tecan Infinite F50).

Metabolomic profiling of preterm feces using one dimensional 1D-nuclear magnetic resonance spectroscopy (NMR) and 2Dnuclear magnetic resonance spectroscopy (NMR)

A subset of 157 paired fecal samples (75 from Bif/Lacto group, and 81 from Control group) were analyzed by standard one-dimensional (1D) ^1H NMR spectroscopy using a Bruker 600 MHz spectrometer operating at 300 K. Feces (50 mg) were combined with 700 μl of phosphate buffer (pH 7.4; 100% D_2O) containing 1 mmol/L of 3-trimethylsilyl-1-[2,2,3,3- $^2\text{H}_4$] propionate (TSP), and 10 zirconium beads (1 mm diameter) (BioSpec Products). Samples were homogenized using a Precellys bead beater (Bertin) with 2 cycles of 40 s at 6,500 Hz speed, centrifuged at 14,000 g for 10 min and the supernatant was transferred to NMR tubes. 1D NMR spectra were acquired for each sample using a nuclear overhauser effect pulse sequence for water suppression as described by Beckonert and colleagues⁵⁴). Spectra were automatically phased and calibrated to the TSP reference using Topspin 3.6 (Bruker BioSpin). Spectra were imported into Matlab 9.4 (R2018a), redundant spectral regions (those arising from TSP and imperfect water suppression) were removed, and the spectral profiles were normalized using a probabilistic quotient method. Data analysis was performed using principal components analysis (PCA),

orthogonal projection to latent structures discriminant analysis (OPLS-DA) and covariate-adjusted-projection to latent structures-discriminant analysis (CA-PLSDA) using in-house scripts. Pairwise OPLS-DA models (Bif/Lacto versus Control) were constructed for each sampling point and for all sampling points combined. Here, the complete spectral datapoints (metabolic profile) served as the predictors (X variables) and class membership (Bif/Lacto versus Control) served as the response (Y) variable. The predictive ability (Q^2Y) of the models were calculated using a 7-fold cross-validation approach and the validity of the Q^2Y values were assessed through permutation testing (100 permutations). A CA-PLS model was also built using the fecal profiles from all sampling points and the model was adjusted for sampling age. Additional two-dimensional (2D) 1H - 1H NMR spectroscopy was performed on two selected fecal samples to assist with metabolite identification. Conventional 2D NMR spectra were acquired using homonuclear correlation spectroscopy (COSY) and heteronuclear single quantum coherence spectroscopy (HSQC) experiments with water suppression to assist with structural elucidation.

pH measurement of the fecal samples

The pH of a randomly selected subset of fecal samples used in the metabolomics analysis (39 samples from the Bif/Lacto Group, and 39 samples from the Control Group) was assessed. Fifty mg of fecal sample was added 1 ml of sterile water, vortexed and measured using a glass electrode pH meter (Martini Mi151).

Accession codes

The datasets supporting the conclusions of this article are available in the European Nucleotide Archive (<http://www.ebi.ac.uk/ena> repository) accession numbers PRJEB31653 (Illumina 16S MiSeq sequencing and Illumina HiSeq sequencing data).

Acknowledgements

This work was funded via a Wellcome Trust Investigator Award to LJH (100974/Z/13/Z) and support of the BBSRC Norwich Research Park Bioscience Doctoral Training Grant (BB/M011216/1, supervisor LJH, student CAG), Institute Strategic Programme (ISP) grant for Gut Health and Food Safety, BB/J004529/1 (LJH), and ISP grant for Gut Microbes and Health BB/R012490/1 and its constituent project(s), BBS/E/F/000PR10353 and BBS/E/F/000PR10355 to LJH. Work at St Mary's was supported by a programme grant from the Winnicott Foundation to JSK, and the National Institute for Health Research (NIHR) Biomedical Research Centre based at Imperial Healthcare NHS Trust and Imperial College London. KS was funded by an NIHR Doctoral Research Fellowship [NIHR-DRF-2011-04-128]. The funders had no role in study design, data collection and analysis, decision to publish, or preparation of the manuscript. We sincerely thank all clinical nurses at Norfolk and Norwich University Hospital (NNUH), Rosie Hospital, Queen Charlotte's and Chelsea Hospital, and St Mary's Hospital for collecting stool samples. We would like to give a special mention to research nurses Karen Few, Hayley Aylmer and Zoe McClure for obtaining consent from parents and collecting samples. We thank Wellcome Trust Sanger Institute for their sequencing support.

Author's contributions

Overall study design was conceived by LJH, with PC, JSK, MJD and CAG contributing to refinement.

Sample preparation for sequencing was performed by CAG, JK, CL, LC, MK, KLL, AS and KS.

Bioinformatics and related computational analyses were performed by SC, RK and SM. Metabolomic analysis was performed by CAG, FFR and JRS. Phenotypic assays were performed by CAG and ML.

Statistical analyses and final figure preparation was performed by MJD with input from LJH, CAG, SC, RK, ML, and JRS. LJH, CAG, and MJD wrote the manuscript with important contributions to intellectual content from all authors.

Competing Interests

All authors have no competing interests to disclose.

References

1. WHO. Preterm birth. *World Health Organisation Website* (2018).
2. Mulder, I.E., *et al.* Restricting microbial exposure in early life negates the immune benefits associated with gut colonization in environments of high microbial diversity. *PLoS One* **6**, e28279 (2011).
3. Walker, W.A. The importance of appropriate initial bacterial colonization of the intestine in newborn, child, and adult health. *Pediatr Res* **82**, 387-395 (2017).
4. Shulhan, J., Dicken, B., Hartling, L. & Larsen, B.M. Current Knowledge of Necrotizing Enterocolitis in Preterm Infants and the Impact of Different Types of Enteral Nutrition Products. *Adv Nutr* **8**, 80-91 (2017).
5. Pammi, M. & Weisman, L.E. Late-onset sepsis in preterm infants: update on strategies for therapy and prevention. *Expert review of anti-infective therapy* **13**, 487-504 (2015).
6. Been, J.V., *et al.* Preterm birth and childhood wheezing disorders: a systematic review and meta-analysis. *PLoS Med* **11**, e1001596 (2014).
7. Haataja, P., *et al.* Asthma and atopic dermatitis in children born moderately and late preterm. *European journal of pediatrics* **175**, 799-808 (2016).
8. Hill, C., *et al.* Expert consensus document. The International Scientific Association for Probiotics and Prebiotics consensus statement on the scope and appropriate use of the term probiotic. *Nat Rev Gastroenterol Hepatol* **11**, 506-514 (2014).

9. Jacobs, S.E., *et al.* Probiotic effects on late-onset sepsis in very preterm infants: a randomized controlled trial. *Pediatrics* **132**, 1055-1062 (2013).
10. Olsen, R., Greisen, G., Schroder, M. & Brok, J. Prophylactic Probiotics for Preterm Infants: A Systematic Review and Meta-Analysis of Observational Studies. *Neonatology* **109**, 105-112 (2016).
11. Rao, S.C., Athalye-Jape, G.K., Deshpande, G.C., Simmer, K.N. & Patole, S.K. Probiotic Supplementation and Late-Onset Sepsis in Preterm Infants: A Meta-analysis. *Pediatrics* **137**, e20153684 (2016).
12. Deshpande, G., Rao, S., Athalye-Jape, G., Conway, P. & Patole, S. Probiotics in very preterm infants: the PiPS trial. *Lancet (London, England)* **388**, 655 (2016).
13. Hickey, L., Garland, S.M., Jacobs, S.E., O'Donnell, C.P. & Tabrizi, S.N. Cross-colonization of infants with probiotic organisms in a neonatal unit. *The Journal of hospital infection* **88**, 226-229 (2014).
14. Henderickx, J.G.E., Zwitterink, R.D., van Lingen, R.A., Knol, J. & Belzer, C. The Preterm Gut Microbiota: An Inconspicuous Challenge in Nutritional Neonatal Care. *Frontiers in Cellular and Infection Microbiology* **9**(2019).
15. Tauchi, H., *et al.* Gut microbiota development of preterm infants hospitalised in intensive care units. *Beneficial microbes* **0**, 1-12.
16. Korpela, K., *et al.* Intestinal microbiota development and gestational age in preterm neonates. *Scientific Reports* **8**, 2453 (2018).
17. Dominguez-Bello, M.G., *et al.* Delivery mode shapes the acquisition and structure of the initial microbiota across multiple body habitats in newborns. *Proceedings of the National Academy of Sciences of the United States of America* **107**, 11971-11975 (2010).
18. Timmerman, H.M., *et al.* Intestinal colonisation patterns in breastfed and formula-fed infants during the first 12 weeks of life reveal sequential microbiota signatures. *Scientific Reports* **7**, 8327 (2017).
19. Suez, J., Zmora, N., Segal, E. & Elinav, E. The pros, cons, and many unknowns of probiotics. *Nature Medicine* **25**, 716-729 (2019).
20. Gotoh, A., *et al.* Sharing of human milk oligosaccharides degradants within bifidobacterial communities in faecal cultures supplemented with *Bifidobacterium bifidum*. *Scientific Reports* **8**, 13958 (2018).
21. O'Callaghan, A. & van Sinderen, D. Bifidobacteria and Their Role as Members of the Human Gut Microbiota. *Frontiers in Microbiology* **7**(2016).
22. Ayechu-Muruzabal, V., *et al.* Diversity of Human Milk Oligosaccharides and Effects on Early Life Immune Development. *Frontiers in pediatrics* **6**(2018).
23. Milani, C., *et al.* Exploring Vertical Transmission of Bifidobacteria from Mother to Child. *Applied and Environmental Microbiology* **81**, 7078-7087 (2015).
24. Yassour, M., *et al.* Strain-Level Analysis of Mother-to-Child Bacterial Transmission during the First Few Months of Life. *Cell host & microbe* **24**, 146-154.e144 (2018).
25. Zou, Z.-H., *et al.* Prenatal and postnatal antibiotic exposure influences the gut microbiota of preterm infants in neonatal intensive care units. *Annals of clinical microbiology and antimicrobials* **17**, 9-9 (2018).
26. Turrioni, F., *et al.* *Bifidobacterium bifidum* as an example of a specialized human gut commensal. *Frontiers in Microbiology* **5**(2014).
27. Ting, J.Y., *et al.* Duration of Initial Empirical Antibiotic Therapy and Outcomes in Very Low Birth Weight Infants. *Pediatrics* **143**(2019).
28. Neu, J. Gastrointestinal development and meeting the nutritional needs of premature infants. *The American Journal of Clinical Nutrition* **85**, 629S-634S (2007).

29. de Waard, M., *et al.* Time to Full Enteral Feeding for Very Low-Birth-Weight Infants Varies Markedly Among Hospitals Worldwide But May Not Be Associated With Incidence of Necrotizing Enterocolitis: The NEOMUNE-NeoNutriNet Cohort Study. *JPEN. Journal of parenteral and enteral nutrition* (2018).
30. Escribano, E., *et al.* Increased incidence of necrotizing enterocolitis associated with routine administration of Infloran in extremely preterm infants. *Beneficial microbes* **9**, 683-690 (2018).
31. Aceti, A., *et al.* Probiotics for prevention of necrotizing enterocolitis in preterm infants: systematic review and meta-analysis. *Italian journal of pediatrics* **41**, 89 (2015).
32. Goedicke-Fritz, S., *et al.* Preterm Birth Affects the Risk of Developing Immune-Mediated Diseases. *Frontiers in Immunology* **8**(2017).
33. Sonnenschein-van der Voort, A.M.M., *et al.* Preterm birth, infant weight gain, and childhood asthma risk: a meta-analysis of 147,000 European children. *J Allergy Clin Immunol* **133**, 1317-1329 (2014).
34. Bizzarro, M.J. Avoiding Unnecessary Antibiotic Exposure in Premature Infants: Understanding When (Not) to Start and When to Stop Avoiding Unnecessary Antibiotic Exposure in Premature Infants Invited Commentary. *JAMA Network Open* **1**, e180165-e180165 (2018).
35. Flannery, D.D., *et al.* Temporal Trends and Center Variation in Early Antibiotic Use Among Premature Infants Temporal Trends and Center Variation in Early Antibiotic Use Among Premature Infants Temporal Trends and Center Variation in Early Antibiotic Use Among Premature Infants. *JAMA Network Open* **1**, e180164-e180164 (2018).
36. Taft, D.H., *et al.* Bifidobacterial Dominance of the Gut in Early Life and Acquisition of Antimicrobial Resistance. *mSphere* **3**, e00441-00418 (2018).
37. Robertson C, S.G., Jones J, Maimouni H, Clapuci R, Minocha A, Hall L, Clarke P. Marked reduction in necrotising enterocolitis since introducing dual-strain probiotics for high-risk neonates: a single-centre tertiary-level NICU's experience. *Presented at the Neonatal Society 2018 Autumn Meeting.* (2018).
38. Cassir, N., Simeoni, U. & La Scola, B. Gut microbiota and the pathogenesis of necrotizing enterocolitis in preterm neonates. *Future microbiology* **11**, 273-292 (2016).
39. Martinez, F.A.C., Balciunas, E.M., Converti, A., Cotter, P.D. & de Souza Oliveira, R.P. Bacteriocin production by Bifidobacterium spp. A review. *Biotechnology Advances* **31**, 482-488 (2013).
40. Pokusaeva, K., Fitzgerald, G.F. & van Sinderen, D. Carbohydrate metabolism in Bifidobacteria. *Genes & nutrition* **6**, 285-306 (2011).
41. Fukuda, S., Toh, H., Taylor, T.D., Ohno, H. & Hattori, M. Acetate-producing bifidobacteria protect the host from enteropathogenic infection via carbohydrate transporters. *Gut microbes* **3**, 449-454 (2012).
42. Morita, N., *et al.* GPR31-dependent dendrite protrusion of intestinal CX3CR1+ cells by bacterial metabolites. *Nature* **566**, 110-114 (2019).
43. Fukuda, S., *et al.* Bifidobacteria can protect from enteropathogenic infection through production of acetate. *Nature* **469**, 543-547 (2011).
44. O'Sullivan, A., Farver, M. & Smilowitz, J.T. The Influence of Early Infant-Feeding Practices on the Intestinal Microbiome and Body Composition in Infants. *Nutr Metab Insights* **8**, 1-9 (2015).
45. Torondel, B., *et al.* Assessment of the influence of intrinsic environmental and geographical factors on the bacterial ecology of pit latrines. *Microbial biotechnology* **9**, 209-223 (2016).
46. Harris, S.R., *et al.* Evolution of MRSA during hospital transmission and intercontinental spread. *Science* **327**, 469-474 (2010).
47. Page, A.J., *et al.* SNP-sites: rapid efficient extraction of SNPs from multi-FASTA alignments. *Microbial genomics* **2**, e000056 (2016).
48. Seemann, T. Snippy: fast bacterial variant calling from NGS reads. (2015).

49. Page, A.J., *et al.* Roary: rapid large-scale prokaryote pan genome analysis. *Bioinformatics* **31**, 3691-3693 (2015).
50. Stamatakis, A. RAxML version 8: a tool for phylogenetic analysis and post-analysis of large phylogenies. *Bioinformatics* **30**, 1312-1313 (2014).
51. Seemann, T., Klotz, F. & Page, A.J. snp-dists. Convert a FASTA alignment to SNP distance matrix (2018).
52. Pritchard, L., Glover, R.H., Humphris, S., Elphinstone, J.G. & Toth, I.K. Genomics and taxonomy in diagnostics for food security: soft-rotting enterobacterial plant pathogens. *Analytical Methods* **8**, 12-24 (2016).
53. Letunic, I. & Bork, P. Interactive tree of life (iTOL) v3: an online tool for the display and annotation of phylogenetic and other trees. *Nucleic Acids Res.* **44**, W242-245 (2016).
54. Beckonert, O., *et al.* Metabolic profiling, metabolomic and metabonomic procedures for NMR spectroscopy of urine, plasma, serum and tissue extracts. *Nature Protocols* **2**, 2692 (2007).

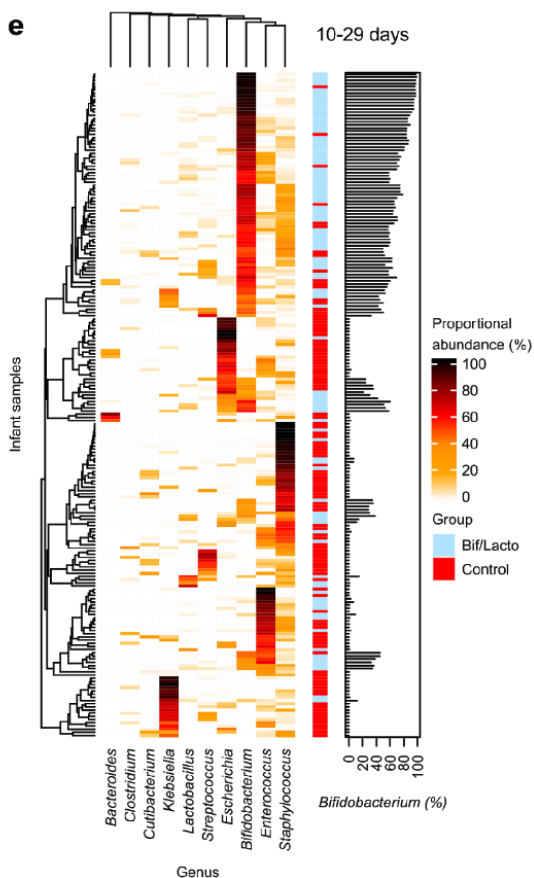
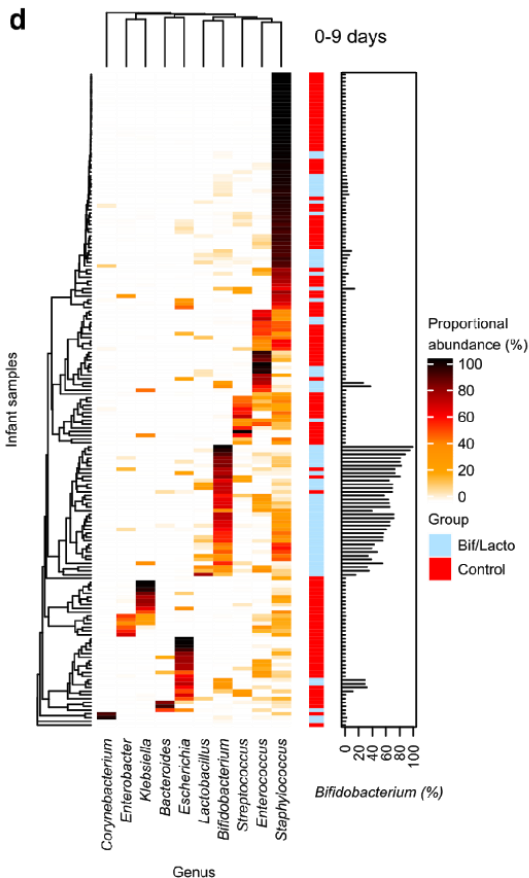
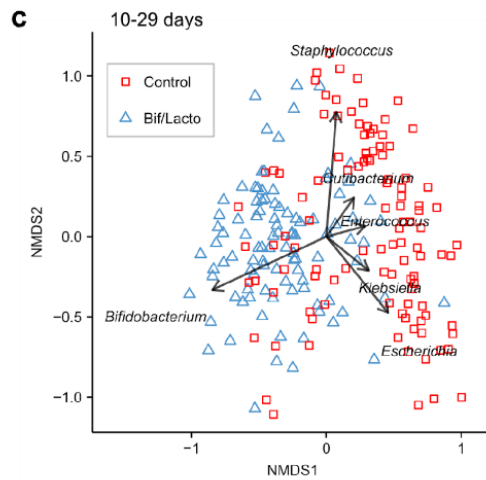
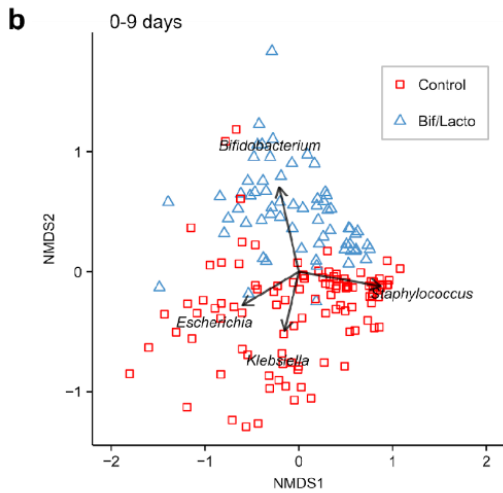
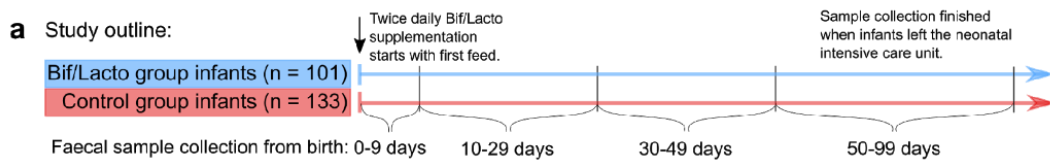


Figure 1: Premature infant gut microbiota clustering and genus composition.

a, Study outline and sample collection times. Infloran supplementation was given until 34 weeks old, with the exception of very low birth weight infants (<1500 g) who received it until discharge. Control group was not given supplementation. **b**, Infant fecal microbiota similarity at 0-9 days and **c**, at 10-29 days shown using NMDS (Non-metric multidimensional scaling) analysis clustered with a Bray-Curtis dissimilarity. Arrows indicate bacterial genera driving the separation of points on the NMDS plots. **d**, Heatmaps showing the ten genera with highest proportional abundance at 0-9 days and **e**, at 10-29 days of age. Heatmap rows were clustered by total microbiota similarity using Bray-Curtis dissimilarity and the columns clustered by genera that occur more often together. Side bar plots show the proportional abundance of *Bifidobacterium* in each sample.

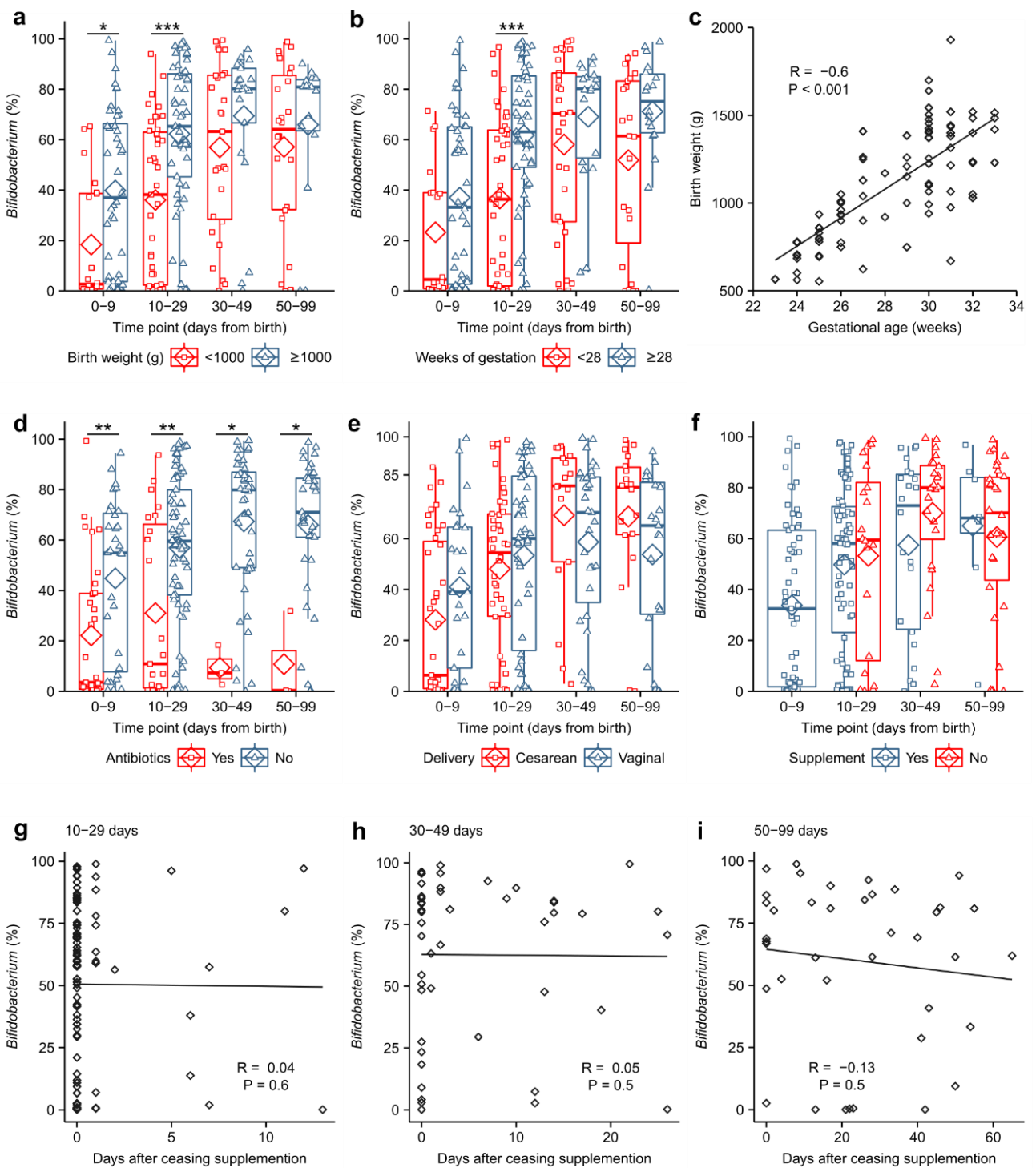


Figure 3: Effects of birthweight, antibiotic use, delivery mode and *Bifidobacterium* colonisation on Bif/Lacto infants.

a, *Bifidobacterium* abundance between very-low birth weight (<1000 g) and low birth weight (>1000 g) **b**, *Bifidobacterium* abundance between infants with very low gestational age (<28 weeks) and low gestational age (≥28 weeks). **c**, Birth weight in grams correlated with gestational age in weeks. **d**, *Bifidobacterium* abundance in infants receiving antibiotics at the time of sample collection. **e**, *Bifidobacterium* abundance in infants delivered by caesarean and vaginal birth. **f**, *Bifidobacterium* abundance in infants still receiving or no-longer receiving supplementation. **g-i** Correlation between *Bifidobacterium* abundance and days after ceasing receiving supplementation. Asterisks represent *p* values: **P* < 0.05, ***P* < 0.01, ****P* < 0.001.

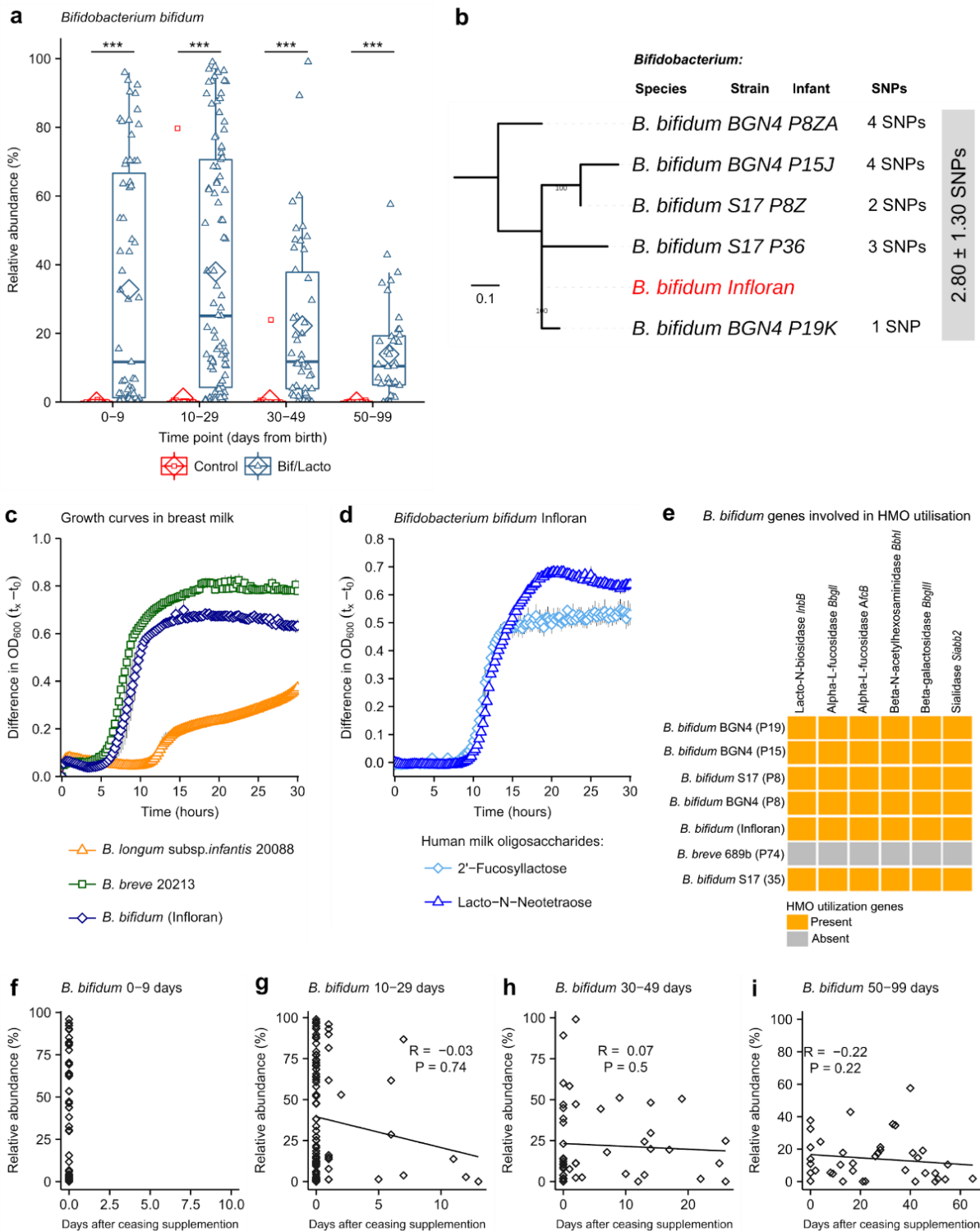


Figure 4: Comparison of *B. bifidum* genomes, and phenotypic characterisation of *B. bifidum* Infloran strain.

a, *Bifidobacterium bifidum* abundance in Bif/Lacto and Control group infants. **b**, Mid-point rooted maximum-likelihood tree based on 12 SNPs called via reference-based approach (strain Infloran as the reference genome) from 5 *Bifidobacterium bifidum* genomes. Grey box denotes pairwise SNP distance between these 6 genomes. Data: mean ± S.D. **c**, Growth curves of *B. bifidum* Infloran, *B. breve* 20213, and *B. longum* subsp. *infantis* 20088, in whole human milk. **d**, Growth curves *B. bifidum* infloran in human milk oligosaccharides (HMO) Lacto-N-tetraose and 2-fucosyllactose **e**, Heat map representing *B. bifidum* genes involved in utilisation of human milk oligosaccharides. **f-i**, Correlation between *B. bifidum* abundance and days after ceasing receiving supplementation. Asterisks represent *p* values: ****P* < 0.001.

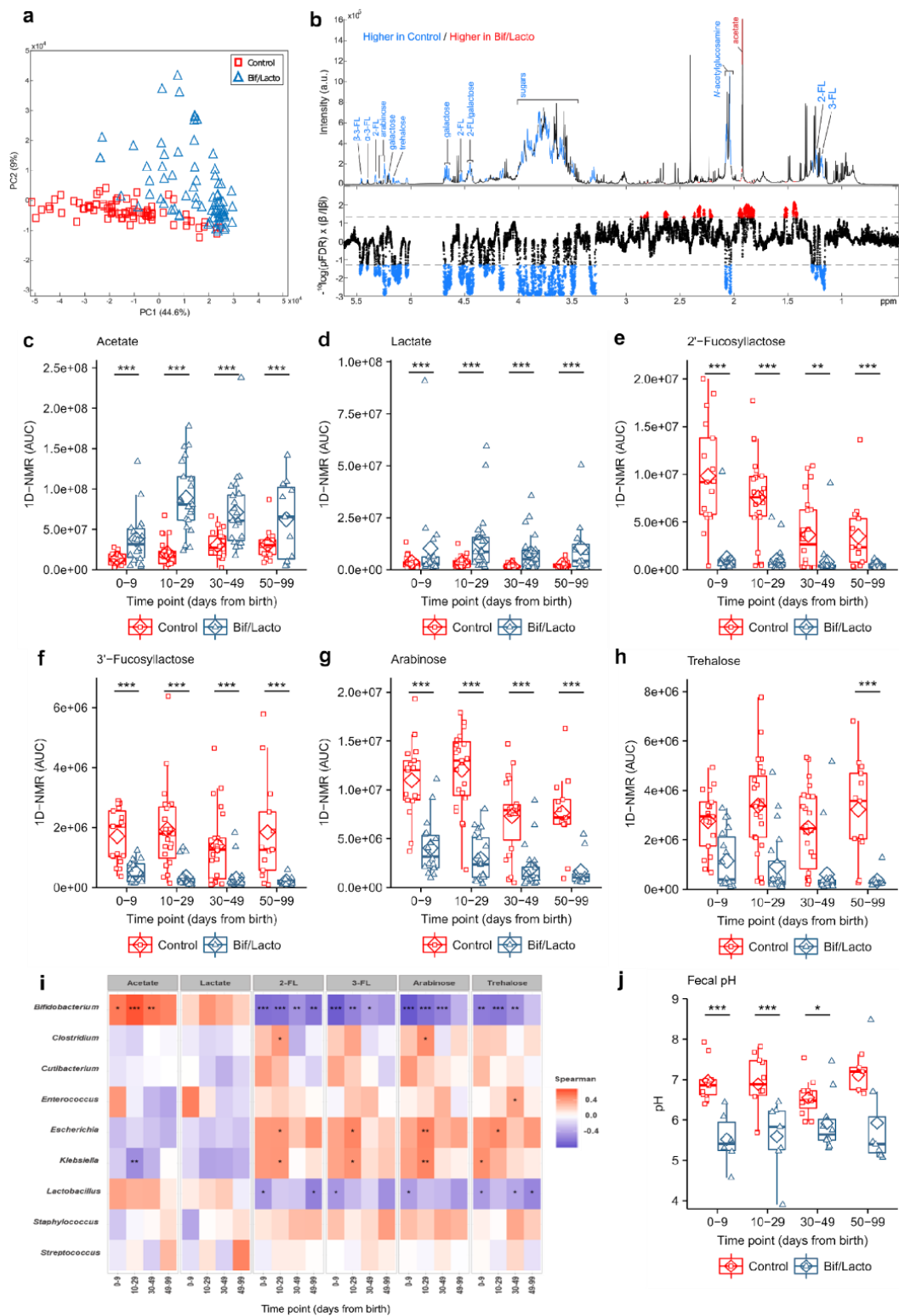


Figure 5: Metabolic profiling of feces from the Bif/Lacto and Control Group using ^1H NMR spectroscopy.

a, Principal Component Analysis (PCA) scores plot comparing the fecal metabolic profiles of the Bif/Lacto and Control groups at all time points. **b**, Discriminatory metabolites that contribute to the covariate-adjusted projection to latent structures-discriminant analysis (CALS-DA) model comparing the fecal metabolic profiles of the Bif/Lacto and Control infants adjusted for sampling age. Upper panel. Average ^1H NMR spectrum from all samples indicating metabolites that are excreted in greater amounts by the Bif/Lacto infants (red) and those excreted in greater amounts by the control infants (blue). Lower panel. Manhattan plot showing P-values calculated for each variable in the multivariate model, corrected for multiple testing using the False Discovery Rate (allowing 5% false discoveries). Horizontal lines indicate cut-off values for the false discovery rate on the \log_{10} scale. Blue points indicate metabolites significantly higher in the control feces and red points indicate those metabolites significantly higher in the Bif/Lacto feces. **c**, Relative acetate concentration. **d**, Relative lactate concentration. **e**, Relative 2'-fucosyllactose (2-FL) concentration. **f**, Relative 3'-fucosyllactose (3-FL) concentration. **g**, Relative arabinose concentration. **h**, Relative trehalose concentration. **i**, Spearman correlation heatmap displaying main faecal metabolites (rows) versus the most abundant bacterial groups (columns). Red denotes positive correlation and blue denotes for negative correlation. **j**, Group faecal sample pH. Asterisks represent p values: * $p < 0.05$, ** $p < 0.01$, *** $p < 0.001$. Details of metabolites data for each sample investigated and pH measurements can be found in Supplementary Tables 8 and 9.