

1 Title

2 The hidden costs of dietary restriction: implications for its evolutionary
3 and mechanistic origins

4

5 Authors

6 Andrew W McCracken¹, Gracie Adams¹, Laura Hartshorne¹, Marc
7 Tatar², Mirre J. P. Simons¹

8

9 Affiliations

10 ¹Department of Animal and Plant Sciences & Bateson Centre, The
11 University of Sheffield, Sheffield S10 2TN, UK.

12 ²Department of Ecology and Evolutionary Biology, Brown University,
13 Providence, RI, USA.

14

15 Corresponding Author

16 Mirre J. P. Simons

17 Alfred Denny Building, Department of Animal and Plant Sciences, The
18 University of Sheffield, Sheffield S10 2TN, UK.

19 +44 (0)114 222 0111

20 m.simons@sheffield.ac.uk

21

22 Keywords

23 ageing; dietary restriction; demography; drosophila melanogaster; costs
24 of reproduction

25 Abstract

26 Dietary restriction (DR) consistently and universally extends health- and lifespan across
27 taxa. Despite considerable research, precise and universal mechanisms of DR have not
28 been identified, limiting the translational potential of its beneficial outcomes to humans. In
29 biomedical science, DR's effects are interpreted as stimulating pro-longevity molecular
30 pathways. This rationale is guided by the conviction that DR evolved as an adaptive, pro-
31 longevity physiological response to restricted food supply. Current evolutionary theory states
32 that organisms should invest in their soma more heavily during periods of DR, and, when
33 their resource availability improves, should outcompete age-matched rich-fed controls in
34 survival and/or reproduction. Here we present a formal test of this key prediction utilising a
35 large-scale demographic approach detailing mortality and fecundity in *Drosophila*
36 *melanogaster* fed alternating dietary regimes (N > 66,000 flies across 11 genetic lines). Our
37 experiments reveal substantial, unexpected mortality costs when returning to a rich diet
38 following periods of DR, in direct contrast to the predictions from current evolutionary theory
39 of DR. The physiological effects of DR should therefore not be interpreted as being
40 intrinsically pro-longevity, acting through increased investment in somatic maintenance. We
41 suggest DR's effects could alternatively be considered an escape from costs incurred under
42 nutrient-rich conditions, in addition to novel, discrete costs associated with DR. Our results
43 therefore question the relevance of DR's current evolutionary explanation in interpreting its
44 mechanistic basis.

45 Introduction

46

47 Ageing has attracted extensive scientific interest, both from a fundamental and biomedical
48 perspective. Dietary restriction (DR) universally extends health- and lifespan across taxa,
49 from baker's yeast to mice (Fontana and Partridge, 2015). The reduction of total calories - or
50 restriction of macronutrients, such as protein - extends lifespan reliably (Min *et al.*, 2007; Lee
51 *et al.*, 2008; Solon-Biet *et al.*, 2014; Jensen *et al.*, 2015). Although the precise universal
52 mechanisms that connect diet to ageing remain elusive, translation of DR's health benefits to
53 human medicine is deemed possible (Dirks and Leeuwenburgh, 2006; Balasubramanian,
54 Howell and Anderson, 2017). The widespread assumption of DR's translational potential
55 originates from the notion that DR's beneficial effects are facilitated by shared evolutionary
56 conserved mechanisms, as beneficial effects of DR are observed across taxa. Indeed,
57 experiments on our close evolutionary relatives, rhesus monkeys (*Macaca mulatta*) have
58 demonstrated that DR could be translational (Mattison *et al.*, 2017). Still, the mechanisms by
59 which these benefits are accrued physiologically may be wholly disparate, as no single
60 genetic or pharmaceutical manipulation mimicking the benefits of DR across model
61 organisms exists (Selman, 2014). Mechanistic insight will be key, since DR as a lifestyle
62 intervention has limited scope, given the degree of self-restraint required. It is therefore
63 warranted to direct scrutiny towards the evolutionary theory of DR, since it underpins the
64 assumed universality of physiological mechanisms by which DR confers health benefits.

65

66 Shared universal mechanisms can only be inferred from the ubiquity of the DR longevity
67 response, when the selection pressures responsible for such evolutionary conservation are
68 understood. The DR response itself may have evolved once, and mechanisms might be
69 conserved. Alternatively, DR could have undergone convergent evolution, either using
70 similar mechanisms - or by adopting alternative ones (Mair and Dillin, 2008). These
71 evolutionary scenarios provide distinct predictions as to how informative mechanistic
72 research in other animals will prove for human medicine. Current evolutionary theory on DR
73 is limited, and its elemental phenotypic predictions have undergone minimal empirical
74 examination (Zajitschek *et al.*, 2018). The DR effect itself is interpreted as an evolved,
75 adaptive, pro-longevity physiological response to limiting food availability (Holliday, 1989).
76 Life-history theory - a central tenet of evolutionary biology - states resources are limited, and
77 thus predicts trade-offs between reproduction (Höglund, Sheldon and Hoglund, 1998) and
78 survival (Stearns, 1989), even in nutrient-rich environments. As such, DR presents an
79 enigma: why do organisms live longer on a constrained energy budget?

80

81 The currently accepted evolutionary model for DR (Shanley and Kirkwood, 2000) uses a life-
82 history perspective on ageing - the Disposable Soma Theory (DS) that predicts a trade-off
83 between investment into reproduction and somatic maintenance (Kirkwood, 1977; Kowald
84 and Kirkwood, 2016) - to explain this enigma. The model proposes that below a certain
85 resource threshold, organisms will reallocate energy almost exclusively towards somatic
86 maintenance (Fig.1). In certain ecological situations (e.g. severely reduced juvenile survival,
87 or when the energy budget is lower than the initial costs (Jönsson, 1997), or the cost of one
88 unit, of reproduction) investment into reproduction will cease to yield fitness. The optimal,
89 fitness-maximising strategy under these harsh conditions would be to terminate investment
90 into reproduction and utilise this energy to gain fitness when conditions improve. Crucially,
91 this life-history strategy could favour an increase in energy devoted to maintenance and
92 repair - allowing organisms to survive periodic bouts of famine with an intact (or superior)
93 soma (Shanley and Kirkwood, 2000; Kirkwood and Shanley, 2005). This 'somatic
94 maintenance response' has been presumed to be the primary causative agent in the pro-
95 longevity DR response (Kirkwood and Austad, 2000; Masoro, 2000; Ingram *et al.*, 2006;
96 Speakman and Mitchell, 2011; Fontana and Partridge, 2015).

97

98 This attractive evolutionary rationale has given credibility to the assumption that
99 physiological changes in the DR animal are inherently pro-longevity. For example,
100 transcriptomic upregulation of, what could be, maintenance processes under DR, have lent
101 credence to this hypothesis (Lee *et al.*, 1999; Kirkwood and Austad, 2000; Pletcher, Libert
102 and Skorupa, 2005; Whitaker *et al.*, 2014). Directionality is often ambiguous, however;
103 downregulation of DNA repair under DR could be interpreted as either a reduction in DNA
104 damage generation, or reduced investment into repair (Lee *et al.*, 1999; Pletcher, Libert and
105 Skorupa, 2005). In other words, a simpler rationale is often neglected: the surge of
106 'maintenance and repair' gene expression could be a 'mere' stress response to metabolic
107 disruption. The health benefits observed under DR might originate from a passive response -
108 one not necessarily evolved as an adaptive regulatory response to diet. Under these
109 circumstances, lifespan extension could be a 'simple' correlated response to currently
110 unknown, but strongly conserved, physiology. For example, the limitation of metabolic rate or
111 reduction in specific metabolites as a direct consequence of DR could reduce conserved
112 associated physiological dysfunction, and thereby extend lifespan. The negative
113 physiological effects dietary restricted organisms suffer, e.g. compromised immune function
114 (Kristan, 2008) and cold intolerance (Adler and Bonduriansky, 2014), could arise from a
115 similar passive response, and are not necessarily the result of a regulated trade-off. DR is
116 sometimes considered a hormetic response - mild stress, resulting in the stimulation of
117 conserved cellular reactions leading to beneficial health (Rattan, 2008) – which would be a

118 similar example of a passive response. One example of such a response is the activation of
119 heat shock proteins, which show only very transient expression (Li and Duncan, 2008), but
120 long-lasting effects on life expectancy (Tatar, Khazaeli and Curtsinger, 1997).

121

122 The distinction between more passive correlated responses versus adaptive programmed
123 pro-longevity responses will be key to identifying the basic mechanisms of DR and develop
124 translation to humans. The widely-accepted evolutionary model of DR supports an adaptive
125 phenotypic response and provides a key prediction: organisms should invest in their soma
126 more heavily during periods of DR, and, when their resource availability improves, should
127 outcompete age-matched rich-fed controls in survival and/or reproduction. Here we provide
128 an experimental test of this prediction, utilising a large-scale demographic approach detailing
129 mortality and fecundity in *Drosophila melanogaster* fed different dietary regimes. Our results
130 revealed substantial mortality and fecundity costs when returning to a rich diet after a period
131 of DR, falsifying the key prediction provided by the evolutionary biology of DR. These effects
132 were independent of genotype, duration of DR, number of dietary fluctuations, access to
133 water, and microbiota abundance. Our results therefore suggest that the effects of DR are
134 not intrinsically pro-longevity, and could be considered an escape from costs incurred under
135 nutrient-rich conditions in addition to novel, discrete costs associated with restricting dietary
136 protein. These insights question the relevance of current evolutionary explanations of DR in
137 guiding biomedical research into its mechanisms. Our alternative paradigm - a passive, not
138 necessarily directly adaptive response to DR - gives renewed credibility to a range of
139 mechanistic hypotheses of DR: hormesis (Masoro, 2005; Sinclair, 2005), a reduction in
140 metabolism causing reduced oxidative damage generation (Masoro, 2005; Mair and Dillin,
141 2008; Redman *et al.*, 2018) and improved mitochondrial functioning (Weir *et al.*, 2017), or a
142 reduction of waste products from specific metabolic pathways (Hipkiss, 2006).

143 Results

144

145 Hidden costs of Dietary Restriction

146 Our first set of diet experiments were conducted using the wild-type inbred lineage DGRP-
147 195, comprising 11,084 individual deaths (Table S1). DR imposed continuously throughout
148 adult life resulted in a significant reduction in mortality rate (Fig. 2; Table S1,2; $P < 0.001$, 3
149 times lower hazard). In addition, switching flies to DR at older ages instantly reduced
150 mortality levels to the levels of flies that had experienced continuous DR ('short reverse-
151 switch'; Fig. 2D; Table S1). Such mortality amnesia - a complete absence of historic diet
152 effects - has been reported previously in flies (Good and Tatar, 2001; Mair *et al.*, 2003).

153

154 Our expectation, based on the current evolutionary model of DR, was that if flies were
155 returned to rich food conditions after a period of DR, they would have a superior soma
156 compared to flies that experienced rich food continuously. Energy reallocated from
157 reproduction towards somatic maintenance should result in higher fitness and enhanced
158 longevity (Fig. 1). In contrast, our 'long-switch' treatment resulted in a substantial increase to
159 mortality risk compared to flies kept on a rich diet throughout life (Fig. 2A; Table S1; $P <$
160 0.001 , 3.7 times higher hazard). Mortality peaked immediately (within 48h; 5.1 times higher
161 hazard) after the switch from a restricted to a rich diet. The magnitude of this mortality
162 difference decreased slowly thereafter, resulting in no difference between the continuous
163 rich diet and the long-switch treatments after eight days (Fig. 2A; Table S3; $P < 0.001$).

164

165 Repeated diet switching

166 The long-switch dietary treatment may be dependent on several specific aspects of the
167 imposed dietary regime, not necessarily falsifying the somatic maintenance hypothesis of
168 DR. First, the effects of the long-switch treatment could be contingent upon the duration of
169 prior exposure to DR. Indeed, it has been suggested that DR evolved as a response to
170 relatively short, intermittent bouts of famine (Shanley and Kirkwood, 2000). Second, it has
171 also been suggested that the longevity effect of DR itself may be selected for at relatively
172 young ages (Shanley and Kirkwood, 2000). Thus, it was possible that young flies would not
173 show the heightened mortality we observed. Third, it could be that sudden changes in diet
174 *per se* is harmful. To test these three potential confounds we used short recurring bouts of
175 DR, alternating between a rich and a DR diet every four days ('4-day switch'). In this dietary
176 regime, mortality on the rich diet compared to the continuous rich diet was similarly
177 exacerbated (Fig. 2B; Table S1, 2; $P < 0.001$, 2.4 times higher hazard). This 4-day switch
178 dietary regime also allowed us to examine whether flies were able to instantly and

179 repeatedly modulate their mortality risk in response to diet, similar to the short reverse-
180 switch treatment (Fig. 2D). Flies indeed modulated their mortality in response to the diet they
181 were currently fed, with a degree of surprising immediacy. Mortality risk on DR, within the 4-
182 day switch regime, repeatedly decreased to levels similar to that of flies continuously
183 exposed to a restricted diet (Fig. 2B; Table S1). Nonetheless, mortality risk during these
184 periods of DR imposition was significantly higher than that of continuous DR-treated flies
185 (Table S1; $P < 0.001$, 1.6 times higher hazard). We suggest this increase in mortality seen
186 on DR in the 4-day switch treatment is due to either accrued physiological costs or more
187 probable, a carry-over of deaths directly resulting from the rich diet, but recorded on the DR
188 diet.

189

190 **Mortality costs depend on the duration of Dietary Restriction**

191 A closer examination of the timing of mortality within the 4-day switching paradigm showed
192 that the mortality response was strongest in the second 48 hrs after exposure to both DR
193 and rich diets (Table S4; $P < 0.001$). This suggests a period of acclimation to both DR and
194 rich diets is necessary before their physiological effects are fully realised. To test the
195 importance of the duration of exposure to DR and rich diets for the mortality phenotypes
196 observed, further dietary regimes were used. First, switching from DR to rich conditions was
197 carried out at increased frequency - alternating every 2 days ('2-day switch'; Table S1, 2).
198 This 2-day switch dietary regime confirmed that sustained exposure to the diets (longer than
199 2 days) was required to cause the mortality phenotypes observed. On a rich diet, the 2-day
200 switch regime showed slightly higher mortality compared to the continuous rich diet (Fig. 2C;
201 hazard = 1.1, $P < 0.05$) and mortality on DR in the 2-day switch regime did not reduce to the
202 levels seen in continuously dietary restricted flies (Fig. 2C; hazard = 1.3, $P < 0.001$).
203 Together these diet-specific mortality effects resulted in an overall lifespan extension in the
204 2-day switch regime (Fig. 2G; Table S2; $P < 0.001$). As flies spend an equal amount of time
205 on DR or rich diets in the 2-day switch regime: the reduction of mortality under DR can be
206 considered to be relatively more rapid than the induction of exacerbated mortality on rich
207 food (after a period of DR). We reasoned that the exacerbation of mortality on rich food
208 either requires an extended period on restricted or rich food. To test this directly,
209 asymmetrical dietary regimes were used.

210

211 In this additional set of experiments, we combined the 4-day and 2-day switching regimes:
212 treatments were comprised of 4 days on either a DR or rich diet, followed by 2 days on the
213 other ('4-to-2 day switch'). Similar to the 4-day switch, this dietary regime was repeated
214 sequentially. These '4-to-2' regimes showed no marked increase in mortality on the rich diet
215 compared to flies on a continuous rich diet (Fig. 2E, F; Table S5). Relative to a continuous

216 DR treatment, the effect of DR within this paradigm was markedly reduced, especially when
217 flies were restricted for 2 days only (Fig. 2F; Table S5). This reduction in the mortality
218 response to DR in the '4-to-2' regimes amounted to a marked reduction in the total longevity
219 extension achieved when compared to continuous DR. When flies spend two-thirds of their
220 lives on DR lifespan was only extended by half (compared to continuous DR), and only a
221 quarter when flies spend one-third of their lives on DR (Fig.2E, F; Table S6). These
222 experiments thus again suggest a period exceeding 2 days on either diet is required to
223 induce marked mortality effects.

224

225 Note that within the long-switch treatment, the mortality exacerbation observable on rich food
226 was strongest within the first 2-day interval (Fig 2A; Table S3). Additionally, our short
227 reverse-switch induced a full DR response - mortality amnesia - within 2 days (Fig. 2D; Table
228 S1). Moreover, the ameliorated mortality exacerbation of our additional switch experiments
229 (2-day, and 4-to-2 day switches) strongly suggest that the sudden dietary perturbations
230 themselves are not the cause of premature mortality in our switching regimes. From these
231 combined results we therefore tentatively conclude that the additional mortality costs
232 observable on a rich diet are contingent upon the prior duration of DR.

233

234 **Genetic variance**

235 To eliminate the possibility that the dietary responses described above (in DGRP-195) were
236 the result of rare genetic effects, we performed the same dietary perturbations in a panel of
237 randomly selected genotypes (DGRP-105; 136; 195; 217; 239; 335; 362; 441; 705; 707;
238 853). Across our panel, we detected an increase in longevity under DR conditions (Fig. 3, 4;
239 additive model, DR hazard = -0.21 ± 0.08 , $P < 0.001$). There were considerable genetic
240 effects in response to diet however (interaction model: $\chi^2 = 204.8$ (df=10), $P < 0.001$), with
241 some genotypes showing elevated mortality under restricted-diet conditions, compared to
242 continuously-fed rich diet flies (Fig. 3, 4). This degree of variation in response to DR can be
243 explained by genetic variation in the reaction norm to diet. A particular combination of a
244 restricted and rich diet will not always induce the same longevity response in a range of
245 genotypes (Lee *et al.*, 2008; Tatar, 2011; Jensen *et al.*, 2015).

246

247 We tested genetic variance in the response to the long-switch treatment using age-
248 dependent interval based models. Across genotypes, exposure to the rich diet after a period
249 of DR (long-switch) resulted in exacerbated mortality, exceeding that of flies fed a rich diet
250 for their whole lives (Fig. 3; additive model, hazard = 0.997 ± 0.056 , $P < 0.001$). There was
251 significant genetic variance for this trait ($\chi^2 = 124$ (df=10), $P < 0.001$). Still, all genotypes
252 showed a sudden and marked mortality overshoot, compared to a continuous rich diet,

253 following a switch from DR to high nutrient conditions (Fig. 3; Table S7, 8; 9 of 11 significant;
254 range: 1.12 to 5.21 times hazard).

255

256 Alternating the diet from DR to rich every 4 days decreased longevity compared to the
257 continuous rich diet, across the genetic panel (additive non-interval based model, hazard =
258 0.24 ± 0.047 , $P < 0.001$). Again, we found significant genetic variance for the response to
259 this dietary regime ($\chi^2 = 117$ (df=10), $P < 0.001$). Lines differed in their responses: 5 of the
260 11 showed marked decreases in survival; 1 showed an increase in survival, and the
261 remaining 5 showed statistically non-significant effects (Table S8). Interval-based models
262 showed that mortality rates increased at the rich diets following a period of DR, as in the
263 long-switch, in all lines (significant in 7 of 11; Table S10,11). There was a modest positive
264 genetic correlation in the increase in mortality induced by the long-switch and 4-day-switch
265 dietary regimes (correlation of coefficients from Table S9, 11; $r_s = 0.45$, $P = 0.17$),
266 suggesting these dietary phenotypes originate from similar physiology.

267

268 **Hidden costs: independent of a pro-longevity DR response**

269 Our restricted diet unexpectedly induced a putative starvation response - observable as an
270 increased mortality rate - in four lines (136, 239, 335, 853; Fig. 3, 4; Table S7, 9, 10, 11).
271 These contrasting responses to DR serendipitously allowed us to see whether the dietary
272 switching phenotypes were contingent on the direction of the DR response. Surprisingly,
273 when lines that showed starvation were refed on a rich diet (long-switch), mortality did not
274 decrease, but increased (Table S7, 8; 3 out of 4 showed a significant increase), even
275 beyond the heightened mortality seen on DR (Fig.3, Table S12). Similarly, within the 4-day
276 switching regime, mortality risk was exacerbated at a rich diet. The pattern of mortality even
277 reversed, compared to individuals fed diets continuously, with lines now showing a putative
278 DR-longevity response within the 4-day switch dietary regime (Fig. S1; Table S10, 11, 13).
279 These outcomes were particularly remarkable since exposure to a richer diet was expected
280 to rescue the starvation response. In essence however, upon a return to the diet where
281 recovery would be expected, individual mortality risk surged even higher.

282

283 **Cost of mortality not compensated for by fecundity increase**

284 We recognised our results would not necessarily discredit the evolutionary model of DR
285 should the observed costs in mortality be compensated fully, or partially, by an increase in
286 fecundity. Egg production across the DGRP panel experiment was measured from vials in
287 each dietary regime and expressed both as a total count (age-specific fitness of the
288 population; Fig. S2, 3; Table S14, 16) or eggs per fly (age-specific reproductive output,
289 corrected for mortality differences; Fig. S2, 3; Table S15, 17). All lines responded strongly to

290 DR, by reducing reproductive output. Within the 4-day switching paradigm, the restricted diet
291 also induced a rapid reduction in fecundity (Fig. S3; Table S16, 17). As with the mortality
292 response, genetic lines responded somewhat differently in fecundity in response to the
293 dietary treatments (long-switch: $F=57$ (df=2), $P < 0.001$; 4-day switch: $\chi^2 = 187$ (df=9), $P <$
294 0.001). However, in both metrics, our switching diets underperformed in comparison to the
295 continuous rich diet (Fig. S2, 3; Table S14-17), confirming our mortality phenotypes were not
296 compensated by higher fecundity upon a return to nutrient rich conditions.

297

298 **Mortality phenotypes were not contingent on condition of the microbiome, social**
299 **housing, water or sex.**

300 A switch to rich diets after a sustained period of DR (long-switch) still resulted in an increase
301 of mortality when flies were treated with antibiotics (Table S18; $P < 0.001$), provided
302 additional water (Table S19; $P = 0.002$), or when mortality was assessed in isolation (Table
303 S20; $P = 0.014$). Males responded, similar to females, by increasing mortality on rich diets if
304 this was preceded by 4 days of DR (4 day switch, Table S21; $P = 0.001$, long-switch not
305 tested).

306

307

308 Discussion

309

310 DR has been tested across multiple species and the resulting lifespan extension has
311 consistently - with very few exceptions (Adler and Bonduriansky, 2014) - been interpreted as
312 provoking anti-ageing, pro-longevity physiology. This interpretation is based on the widely-
313 accepted evolutionary theory of DR (Shanley and Kirkwood, 2000; Kirkwood and Shanley,
314 2005) which predicts that during periods of DR, investment in somatic maintenance is
315 actively increased, to await better times when fitness can be gained. In contrast, we find that
316 periods of DR did not result in a superior soma, and instead resulted in large increases in
317 mortality, and reductions in fecundity, when nutrient availability returned to plentiful. Our
318 results question the current explanation of DR's evolutionary origins, and thereby their
319 relevance in interpreting DR's mechanistic origins.

320

321 Other studies have raised similar concerns but have only very rarely measured the
322 consequences of the relevant life-history event: a period of DR followed by a period of rich
323 food conditions. Direct measurement of investment into the soma using stable isotopes
324 showed no increased investment under DR (O'Brien *et al.*, 2008). Experimental evolution
325 across fifty generations under DR, failed to support the current evolutionary theory of DR
326 (Zajitschek *et al.*, 2018). Further lack of support, we suggest, originates from the remarkably
327 immediate reduction in mortality – a reduction in frailty, rather than actuarial ageing rate
328 (Good and Tatar, 2001; Mair *et al.*, 2003; Simons, Koch and Verhulst, 2013) or historic
329 physiological effects of diet (Selman and Hempenstall, 2012; Rusli *et al.*, 2018)– seen when
330 flies are dietary restricted. A limited number of previous studies with *Drosophila* have shown
331 such a response (Good and Tatar, 2001; Mair *et al.*, 2003). We confirmed these results (Fig.
332 2D), but also show for the first time that flies are capable of doing this repeatedly, in
333 response to multiple switches in diet. Since DR does not slow ageing demographically, but
334 results in an instant lowering of mortality - without any accrued beneficial effects - this is in
335 itself evidence against increased somatic investment under DR (Simons, Koch and Verhulst,
336 2013; Garratt, Nakagawa and Simons, 2016).

337

338 In the reverse scenario, when flies resumed rich diets after DR, their performance was
339 markedly lower than that of flies that were fed rich diets for their entire lives. Notably, this
340 effect held, even when DR caused starvation (Tatar, 2011) - resulting in exacerbated
341 mortality on the diet that should have provided an opportunity to refeed. Previous studies did
342 not detect the same mortality costs in dietary regimes analogous to our long-switch (Mair *et*
343 *al.*, 2003; Mair, Piper and Partridge, 2005), although in the raw non-smoothed data, some

344 exacerbation of mortality can be seen in some conditions. There are a number of potential
345 variables which could explain these differences. First, the duration of DR prior to a rich diet
346 appears to be integral to inducing exacerbated mortality on rich diets (Fig. 2). Second, the
347 existence and intensity of both the long-switch and 4-day switch phenotype, are genotype-
348 dependent (Fig. 3, S1). This matter is further complicated by the lack of complete
349 synchronicity between both phenotypes, across genotypes (Fig. 3, S1). Last, the longevity
350 response to both a restricted diet, and the re-introduction of a rich one, may be contingent on
351 the macronutrient composition of both (Lee *et al.*, 2008; Jensen *et al.*, 2015). Earlier work
352 diluted media reducing both carbohydrates and protein (Mair *et al.*, 2003; Mair, Piper and
353 Partridge, 2005), in contrast to our method of reducing yeast concentration, protein, alone.
354

355 Genotypes will differ in their longevity reaction norm to diet, rendering it impossible to know *a*
356 *priori* whether a certain dietary composition constitutes the exact optimal longevity-directed
357 diet (Tatar, 2011; Flatt, 2014). Genetic variation in the response to DR, reported in rodents
358 (Liao *et al.*, 2010; Swindell, 2012; Mitchell *et al.*, 2016) and flies (Wilson *et al.*, 2017), might
359 therefore not necessarily, or wholly, constitute variation in the physiological mechanisms that
360 connect DR to ageing. We propose that our dietary phenotypes may also be contingent upon
361 the direction and degree in which these diets deviate from the optimum, which may be one
362 explanation for the dissimilarity of results observed in similar experiments. These
363 considerations may also explain why the precise duration of DR is important, in line with the
364 recent finding that the duration of starvation is critical in the lifespan extension generated via
365 intermittent fasting (Catterson *et al.*, 2018). In addition, larval diet, timing and the order of
366 how diets were fluctuated contributed to differential mortality observed when fluctuating diet
367 (van den Heuvel *et al.*, 2014). Interestingly, 'choice' experiments - where poor- and rich diets
368 are fed to flies in conjunction – result in heightened mortality, compared to continuous
369 feeding (Ro *et al.*, 2016). These effects are dependent on serotonin signalling (Ro *et al.*,
370 2016), suggesting that the *perceived*, rather than *actual* composition of food ingested
371 modulates ageing (Libert *et al.*, 2007).

372
373 In light of this, it is important to consider the renewed interest in intermittent fasting in both
374 rodent and human studies (Fontana and Partridge, 2015; Mattson, Longo and Harvie, 2017).
375 Studies in the previous century on rodents already demonstrated that inducing intermittent
376 fasting, by feeding animals every other day or by other means, extends lifespan in a similar
377 manner to caloric restriction (reviewed in Anson, Jones and de Cabod, 2005). Two recent
378 studies in mice suggest the same, although effects are not as large as full caloric restriction
379 (Mitchell *et al.*, 2019) and outcomes for systemic ageing have been questioned (Xie *et al.*,
380 2017). Human data on intermittent fasting is promising (Mattson, Longo and Harvie, 2017)

381 and has potential application in specific diseases (Cignarella *et al.*, 2018), but conclusive
382 evidence from clinical trials is currently lacking (Horne, Muhlestein and Anderson, 2015;
383 Patterson *et al.*, 2015). Our work now suggests that intermittent DR, dependent on its
384 duration, has negative consequences. These observations fit with the 'refeeding syndrome' -
385 a clinical condition that occurs at refeeding after a period of starvation (Mehanna, Moledina
386 and Travis, 2008). It remains to be determined which duration of starvation or DR would
387 instigate such harmful physiological effects upon refeeding to the extent that it offsets its
388 physiological benefits in humans.

389

390 At present, no mechanistic explanation is apparent which explains the exacerbated mortality
391 when flies return to a rich diet after a period of DR. We have excluded water balance,
392 microbiome, sex-specific and social effects being wholly responsible for our observations.
393 We therefore conclude that in conjunction with physiological costs associated with a rich diet
394 there are hidden costs associated with DR. These costs appear only when a rich diet is
395 resumed after DR. The difference in mortality rates between our switching treatments (Fig.
396 2B, C, E, F) demonstrate a minimum period of acclimation to a restricted diet is necessary to
397 generate the detectable costs of it. This suggests a physiological change at DR that makes
398 animals more sensitive to rich diets, directly contrary to expectations that follow from
399 evolutionary theory. Drawing from our observation of exacerbated mortality upon resumption
400 of a rich diet - even when DR caused starvation - we suggest the exacerbation of mortality
401 on a rich diet results from physiological adaptations that compensate for the lack of certain
402 components within a restricted diet. We suggest this compensation sensitises animals to the
403 physiological costs associated with the elevated intake, or metabolism of such a specific
404 dietary component, producing exacerbated mortality. For example, such physiological
405 compensation at DR could result, upon resumption of the high nutrient diet, in a higher influx
406 of specific dietary components, or a higher flux in metabolic pathways upregulated due to
407 starvation. Intriguingly these same, otherwise hidden, mechanisms might also underlie why
408 animals fed rich diets continuously are shorter lived than those on DR. This novel paradigm
409 also explains why flies respond rapidly and repeatedly to DR: as an escape from costs
410 associated with the intake or metabolism of a (or several) dietary component(s).

411

412 All current evidence so far suggests that uptake of the macronutrient protein is responsible
413 for the effects of diet on longevity (Min *et al.*, 2007; Lee *et al.*, 2008; Maklakov *et al.*, 2008;
414 Solon-Biet *et al.*, 2014; Jensen *et al.*, 2015; Fontana *et al.*, 2016). We suggest that DR's
415 effect on longevity is not via increased investment in somatic maintenance, but the result
416 from a forced escape from the intrinsically harmful effects of dietary protein. The reason why
417 animals would still choose to eat or absorb intrinsically harmful components, such as protein

418 from their diets, is most likely for its use in reproduction (Speakman and Mitchell, 2011;
419 Jensen *et al.*, 2015). The specific physiological mechanisms that underlie these costs, lie at
420 the heart of DR's lifespan extending capacities. Our identification of novel dietary
421 phenotypes in the fly that expose these otherwise hidden costs could prove a powerful new
422 experimental phenotype for the mechanistic study of DR. We suggest that the quest to
423 identify the mechanisms of DR will be aided by acceptance that investment in somatic
424 maintenance is not necessarily responsible for the life-extension seen under DR.

425 Materials and Methods

426

427 Fly husbandry

428 Wild-type inbred isofemale flies from the *Drosophila melanogaster* Genetic Reference Panel
429 (MacKay *et al.*, 2012) were acquired from the Bloomington Stock Centre and the lab of Bart
430 Deplancke (EPFL). Flies were cultured on rich media (8% autolysed yeast, 13% table sugar,
431 6% cornmeal, 1% agar and nipagin 0.225% [w/v]) with bottles for growing and mating,
432 containing an additional 1% [v/v] propanoic acid. For lifespan experiments, adult flies were
433 subsequently provided with either the same rich media, or a restricted media (2% autolysed
434 yeast) in vials. Restricted media retained the composition of all other media components,
435 given the dietary protein axis is the main lifespan determinant in flies (Lee *et al.*, 2008;
436 Jensen *et al.*, 2015). Cooked fly media was kept for a maximum of 2 weeks at 4-6 °C and
437 was warmed to 25°C before use.

438

439 Experimental mortality protocol and demography cages

440 Flies were expanded in bottles (*Drosophila* PP Flask Square Bottom; Flystuff) on a rich diet.
441 Experimental flies were grown in bottles (incubated at 25°C) sprinkled with granulated live
442 yeast, in which 12 females and 2 males had been egg-laying for a period of ~60 hours.
443 Bottles were sprinkled with water, daily, if media appeared dry until pupation began. Upon
444 eclosion, the adult F1 generation was transferred, daily to generate age-matched cohorts, to
445 mating bottles for 48 hours before being sorted under light CO₂ anaesthesia (Flystuff
446 Flowbuddy; < 5L / min) (Bartholomew *et al.*, 2015) and transferred to purpose-built
447 demography cages (Good and Tatar, 2001). Lifespan experiments were carried out in a
448 climate-controlled room (12:12 LD, 25°C and 50-60% relative humidity). Cages contained
449 between 100-125 females each; the number of cages was treatment-dependent. All flies
450 were kept on rich media until age 3-6 days whereupon they were divided between the
451 dietary treatments. Individual lifespan was determined from the time when the individual
452 entered the experimental cage (at two days of age) until death or censoring. A census of
453 flies was taken every other day: dead flies were counted and removed, and fresh media was
454 provided at this time. Flies that were alive, but stuck to the side of the vial; escaped flies and
455 individuals affixed to the food (~10.5% of deaths) were right-censored.

456

457 Fecundity

458 A subsection of fly feeding vials were imaged and analysed using QuantiFly (Waithe *et al.*,
459 2015) to determine relative amounts of egg laying.

460

461 **Dietary regimes**

462 Two main temporal dietary regimes were imposed on several genotypes of mainly female
463 flies using two diets, restricted (DR, 2% yeast) and rich (8% yeast) with controls of
464 continuous exposure to these diets.

465 1) To test whether a prolonged period of DR resulted in superior survival and reproduction
466 when conditions improved, flies were exposed to continuous restricted diet that was
467 switched to a rich diet at ~45-60% survival of the continuous rich diet group ('long-switch').

468 All flies of the same genotype were switched on the same day, irrespective of eclosion date.

469 2) We further tested whether short bouts of DR had similar effects, which also allowed us to
470 test whether effects observed in the long-switch regime were exclusive to older flies. In these
471 diets flies were repeatedly switched between restricted and rich diets at four-day intervals
472 ('four-day switch'). By starting half of the experimental cohort on restricted or rich diets,
473 current dietary treatments were mirrored and balanced across the cohort.

474

475 These experiments were performed on DGRP-195 at high sample size (N = 14,102).

476 Subsequently, to test whether these effects were general, these experiments were expanded
477 to a panel of DGRP lines (DGRP-105; 136; 195; 217; 239; 335; 362; 441; 705; 707; 853) in
478 one large experiment of N = 37,897. Several other parts of the experiments (see below)

479 were run separately (for specific grouping see supplementary data). Dietary treatments were
480 balanced for age. From this experiment, fecundity estimates were also taken from feeding
481 vials, on four consecutive scoring days (for 4-day switch, and continuous treatments) and
482 one scoring day before, and after, the dietary switch (for long-switch, and continuous rich
483 treatment).

484

485 **Supplementary dietary regimes**

486 We tested a range of other dietary regimes to test specific hypotheses, alongside the
487 treatments listed above, using line DGRP-195. 1) We tested whether DR could instantly
488 reduce mortality by imposing a short duration (four days) of DR, in late-life, *sensu* Mair *et al.*,

489 2003, before returning to a rich diet ('short reverse-switch'). 2) We increased the frequency
490 of the dietary switch to two days ('2-day switch') to investigate the length of DR necessary
491 for the observed phenotypes, and 3) further changed the ratio of the time spend on either
492 diet; two days of either rich or restricted diet, to four days of the reverse ('4-to-2-day switch').

493

494 **Tests of specific hypotheses: microbiome, water balance, sex and social effects**

495 We tested whether the dietary phenotypes observed were due to four potential previously
496 suggested confounding factors: 1) the microbiome (Wong, Dobson and Douglas, 2014), 2)
497 water balance (Fanson, Yap and Taylor, 2012) and 3) social effects (Leech, Sait and

498 Bretman, 2017; Chakraborty *et al.*, 2019). 4) Sex-differences in the DR response (Magwere,
499 Chapman and Partridge, 2004; Regan *et al.*, 2016). These were confirmed not to interfere
500 with the observed phenotype (see results). DGRP-195 were used exclusively for these
501 experiments, under the continuous restricted, continuous rich, and long-switch diets. 1) We
502 assessed whether disruption of the gut microbiome was responsible for the mortality
503 phenotype observed by wholesale abating the microbiome. Flies were provided media upon
504 which an array of broad-spectrum antibiotics (50 µl of a stock solution, comprised of 100
505 µg/ml ampicillin, 50 µg/ml vancomycin, 100 µg/ml neomycin, and 100 µg/ml metronidazole)
506 were pipetted and left for 24hrs. We assumed dissolution incorporation in the top 1 ml of
507 food (Ren, Finkel and Tower, 2009). Antibiotic treatment began four days prior to dietary
508 switch treatments, and concluded eight days thereafter. Ablation of the microbiome was
509 confirmed by whole-fly homogenisation (age 20 days; 8 days post-antibiotic treatment) and
510 growth of solution on MRS agar plates (Oxoid; see Fig. S7). Individuals (6 control and 6
511 antibiotic treated) were removed from cages containing a continuous restricted diet, washed
512 in ethanol, and rinsed in PBS (Gibco). Homogenisation took place in 500 µl of PBS, and
513 solute was transferred to a 96-well plate for 1:10 serial dilutions. Dilutions were spotted on
514 plates with, and without antibiotic (500 µl of stock solution) and incubated at 25°C for 72
515 hours. Plates were coated with parafilm to mimic anoxic conditions. 2) Flies were provided
516 with ~1cm³ portion of water-agar (2%[w/v]) accompanying media in vials, to eliminate
517 desiccation as a proximal cause. Water-agar supplementation began at age four and
518 continued throughout the flies' full life course. 3) Social effects were excluded by housing
519 flies individually in vials. These flies were taken from experimental cages and put on the
520 experimental diets at the dietary switch 4) Males were assessed for mortality in the 4 day
521 switch dietary regime.

522

523 **Experimental batches**

524 All demography experiments contained the relevant controls, grown and assayed for
525 mortality at the same time. Where data are plotted in a single figure, this constitutes results
526 gathered from a batch of flies at the same chronological time.

527

528 **Data Analysis**

529 Mixed cox-proportional hazard models were used that included 'cage' as random term to
530 correct for uncertainty of pseudo-replicated effects within demography cages (Ripatti and
531 Palmgren, 2000; Therneau *et al.*, 2003). We used interval-based models that used time-
532 dependent covariates to estimate the differential mortality risks associated with diet (and with
533 time spend on a diet - after diets changed), as imposed in the different dietary regimes.

534 These models allow a statistical association, within the cox-proportional hazard risk, with the

535 current state (e.g. diet) and mortality. Flies in the long-switch dietary regime were also
536 analysed in a state-dependent manner, coding for long-switch only when this state change
537 occurred. Repeated switching regimes were considered lifelong treatments and tested in
538 interaction with the state variable diet. Each model used continuous rich food and DGRP-
539 195 as reference category, except if otherwise stated.

540

541 Interactions between dietary regime, diet and genotype were fitted to test for differential
542 effects of diet on mortality depending on the regime it was provided. Additional specific tests
543 of coefficients are provided that combine the single and interaction term (in a z-test, using
544 the maximum s.e. of the factor compared) to test how mortality risk was changing compared
545 to specific reference categories of interest (e.g. compared to continuous DR). For
546 comparisons between genotypes we report full models including all data and models fitted
547 within each genotype separately. The latter corrects for deviations in proportionality of
548 hazards between the genotypes. Qualitative conclusions remain similar, and formal tests for
549 proportionality of hazards are not available for mixed effects cox regressions. Models without
550 a time-dependent covariate for diet were also run to compare overall longevity differences as
551 a result of alternating exposure to DR (2-day switch, 4-day switch and their combination).
552 These models therefore test the integrated effect on mortality disregarding any within dietary
553 treatment diet effects. Coefficients are reported as logged hazards with significance based
554 on z-tests. Right-censoring was included, as indicated above.

555

556 Egg laying was analysed as a mixed generalized Poisson model using cage as random
557 term, and fitting age as a non-continuous factor in the analysis. Estimates from models are
558 presented (effects of dietary regime) as well as model comparisons using log-likelihood
559 comparison with chi-square to test overall effects of genotype. Effects of different dietary
560 regimes were estimated within the same model. Comparisons of genotypic effects were
561 performed for each different dietary regime separately compared to continuous treatment, as
562 not to conflate genetic variance across different categories with each other.

563 Acknowledgements

564 AWM is supported by the NERC ACCE Doctoral Training Program. MT is supported by
565 American Federation of Aging Research, Grant/Award Number: GR5290420; National
566 Institute on Aging, Grant/Award Number: R37 AG024360, T32 AG 41688. MJPS is supported
567 by a Sir Henry Wellcome and a Sheffield Vice Chancellor's Fellowship, and the Natural
568 Environment Research Council (M005941 & N013832). We thank Laura Carrilero and
569 James PJ Hall from Michael Brockhurst's lab for their valuable assistance during the
570 microbiome ablation experiment. We also thank Kang-Wook Kim for support sorting flies and
571 the Deplancke lab for supplying DGRP lines.

572 References

- 573 Adler, M. I. and Bonduriansky, R. (2014) 'Why do the well-fed appear to die young?: A new
574 evolutionary hypothesis for the effect of dietary restriction on lifespan, *BioEssays*, 36(5), pp.
575 439–450. doi: 10.1002/bies.201300165.
- 576 Anson, R. M., Jones, B. and de Cabod, R. (2005) The diet restriction paradigm: a brief
577 review of the effects of every-other-day feeding, *AGE*, 27(1), pp. 17–25. doi:
578 10.1007/s11357-005-3286-2.
- 579 Balasubramanian, P., Howell, P. R. and Anderson, R. M. (2017) Aging and Caloric
580 Restriction Research: A Biological Perspective With Translational Potential, *EBioMedicine*,
581 21, pp. 37–44. doi: 10.1016/j.ebiom.2017.06.015.
- 582 Bartholomew, N. R. *et al.* (2015) Impaired climbing and flight behaviour in *Drosophila*
583 *melanogaster* following carbon dioxide anaesthesia, *Scientific Reports*. 5(1), p. 15298. doi:
584 10.1038/srep15298.
- 585 Catterson, J. H. *et al.* (2018) Short-Term, Intermittent Fasting Induces Long-Lasting Gut
586 Health and TOR-Independent Lifespan Extension, *Current Biology*, 28(11), p. 1714–
587 1724.e4. doi: 10.1016/j.cub.2018.04.015.
- 588 Chakraborty, T. S. *et al.* (2019) Perception of naturally dead conspecifics impairs health and
589 longevity 5 through serotonin signaling in *Drosophila*. *bioRxiv*, doi: 10.1101/515312.
- 590 Cignarella, F. *et al.* (2018) Intermittent Fasting Confers Protection in CNS Autoimmunity by
591 Altering the Gut Microbiota, *Cell Metabolism*, 27(6), p. 1222–1235.e6. doi:
592 10.1016/j.cmet.2018.05.006.
- 593 Dirks, A. J. and Leeuwenburgh, C. (2006) Caloric restriction in humans: Potential pitfalls and
594 health concerns, *Mechanisms of Ageing and Development*, 127(1), pp. 1–7. doi:
595 10.1016/j.mad.2005.09.001.
- 596 Fanson, B. G., Yap, S. and Taylor, P. W. (2012) Geometry of compensatory feeding and
597 water consumption in *Drosophila melanogaster*, *Journal of Experimental Biology*, 215(5), pp.
598 766–773. doi: 10.1242/jeb.066860.
- 599 Flatt, T. (2014) Plasticity of lifespan: A reaction norm perspective, *Proceedings of the*
600 *Nutrition Society*, 73(4), pp. 532–542. doi: 10.1017/S0029665114001141.
- 601 Fontana, L. *et al.* (2016) Decreased Consumption of Branched-Chain Amino Acids Improves

- 602 Metabolic Health, *Cell Reports*, 16(2), pp. 520–530. doi: 10.1016/j.celrep.2016.05.092.
- 603 Fontana, L. and Partridge, L. (2015) Promoting Health and Longevity through Diet: From
604 Model Organisms to Humans, *Cell*, 161(1), pp. 106–118. doi: 10.1016/j.cell.2015.02.020.
- 605 Garratt, M., Nakagawa, S. and Simons, M. J. P. (2016) Comparative idiosyncrasies in life
606 extension by reduced mTOR signalling and its distinctiveness from dietary restriction, *Aging*
607 *Cell*, 15(4). doi: 10.1111/accel.12489.
- 608 Good, T. P. and Tatar, M. (2001) Age-specific mortality and reproduction respond to adult
609 dietary restriction in *Drosophila melanogaster*, *Journal of Insect Physiology*, 47(12), pp.
610 1467–1473. doi: 10.1016/S0022-1910(01)00138-X.
- 611 van den Heuvel, J. *et al.* (2014) The plastic fly: The effect of sustained fluctuations in adult
612 food supply on life-history traits, *Journal of Evolutionary Biology*, 27(11), pp. 2322–2333. doi:
613 10.1111/jeb.12444.
- 614 Hipkiss, A. R. (2006) On the mechanisms of ageing suppression by dietary restriction—is
615 persistent glycolysis the problem?, *Mechanisms of Ageing and Development*, 127(1), pp. 8–
616 15. doi: 10.1016/j.mad.2005.09.006.
- 617 Höglund, J., Sheldon, B. C. and Hoglund, J. (1998) The Cost of Reproduction and Sexual
618 Selection, *Oikos*, 83(3), p. 478. doi: 10.2307/3546675.
- 619 Holliday, R. (1989) Food, reproduction and longevity: Is the extended lifespan of calorie-
620 restricted animals an evolutionary adaptation?, *BioEssays*, 10(4), pp. 125–127. doi:
621 10.1002/bies.950100408.
- 622 Horne, B. D., Muhlestein, J. B. and Anderson, J. L. (2015) Health effects of intermittent
623 fasting: hormesis or harm? A systematic review, *The American Journal of Clinical Nutrition*,
624 102(2), pp. 464–470. doi: 10.3945/ajcn.115.109553.
- 625 Ingram, D. K. *et al.* (2006) Calorie restriction mimetics: An emerging research field, *Aging*
626 *Cell*, 5(2), pp. 97–108. doi: 10.1111/j.1474-9726.2006.00202.x.
- 627 Jensen, K. *et al.* (2015) Sex-specific effects of protein and carbohydrate intake on
628 reproduction but not lifespan in *Drosophila melanogaster*, *Aging Cell*, Ltd (10.1111), 14(4),
629 pp. 605–615. doi: 10.1111/accel.12333.
- 630 Jönsson, K. I. (1997) Capital and income breeding as alternative tactics of resource use in
631 reproduction, *Oikos*, 78(1), p. 57. doi: 10.2307/3545800.

- 632 Kirkwood, T. B. L. (1977) Evolution of ageing, *Nature*, 270(5635), pp. 301–304. doi:
633 10.1038/270301a0.
- 634 Kirkwood, T. B. L. and Austad, S. N. (2000) Why do we age?, *Nature*, 408(6809), pp. 233–
635 238. doi: 10.1038/35041682.
- 636 Kirkwood, T. B. L. and Shanley, D. P. (2005) Food restriction, evolution and ageing,
637 *Mechanisms of Ageing and Development*, 126, pp. 1011–1016. doi:
638 10.1016/j.mad.2005.03.021.
- 639 Kowald, A. and Kirkwood, T. B. L. (2016) Can aging be programmed? A critical literature
640 review, *Aging Cell*, 15(6), pp. 986–998. doi: 10.1111/ace1.12510.
- 641 Kristan, D. M. (2008) Calorie restriction and susceptibility to intact pathogens, *AGE*, 30(2–3),
642 pp. 147–156. doi: 10.1007/s11357-008-9056-1.
- 643 Lee, C. *et al.* (1999) Gene expression profile of aging and its retardation by caloric
644 restriction, *Science*, pp. 1390–1393. doi: 10.1126/science.285.5432.1390.
- 645 Lee, K. P. *et al.* (2008) Lifespan and reproduction in *Drosophila*: New insights from
646 nutritional geometry, *Proceedings of the National Academy of Sciences*, 105(7), pp. 2498–
647 2503. doi: 10.1073/pnas.0710787105.
- 648 Leech, T., Sait, S. M. and Bretman, A. (2017) Sex-specific effects of social isolation on
649 ageing in *Drosophila melanogaster*, *Journal of Insect Physiology*, 102, pp. 12–17. doi:
650 10.1016/j.jinsphys.2017.08.008.
- 651 Li, D. and Duncan, R. F. (2008) Transient Acquired Thermotolerance in *Drosophila*,
652 Correlated with Rapid Degradation of Hsp70 During Recovery, *European Journal of*
653 *Biochemistry*, 231(2), pp. 454–465. doi: 10.1111/j.1432-1033.1995.0454e.x.
- 654 Liao, C. Y. *et al.* (2010) Genetic variation in the murine lifespan response to dietary
655 restriction: From life extension to life shortening, *Aging Cell*, 9(1), pp. 92–95. doi:
656 10.1111/j.1474-9726.2009.00533.x.
- 657 Libert, S. *et al.* (2007) Regulation of *Drosophila* Life Span by Olfaction and Food-Derived
658 Odors, *Science*, 315(5815), pp. 1133–1137. doi: 10.1126/science.1136610.
- 659 MacKay, T. F. C. *et al.* (2012) The *Drosophila melanogaster* Genetic Reference Panel,
660 *Nature*, 482(7384), pp. 173–178. doi: 10.1038/nature10811.
- 661 Magwere, T., Chapman, T. and Partridge, L. (2004) Sex Differences in the Effect of Dietary

- 662 Restriction on Life Span and Mortality Rates in Female, *Journal of Gerontology*, 59(1), pp.
663 3–9.
- 664 Mair, W. *et al.* (2003) Demography of dietary restriction and death in *Drosophila*., *Science*,
665 301(5640), pp. 1731–3. doi: 10.1126/science.1086016.
- 666 Mair, W. and Dillin, A. (2008) Aging and Survival: The Genetics of Life Span Extension by
667 Dietary Restriction, *Annual Review of Biochemistry*, 77(1), pp. 727–754. doi:
668 10.1146/annurev.biochem.77.061206.171059.
- 669 Mair, W., Piper, M. D. W. and Partridge, L. (2005) Calories do not explain extension of life
670 span by dietary restriction in *Drosophila*, *PLoS Biology*, 3(7), pp. 1305–1311. doi:
671 10.1371/journal.pbio.0030223.
- 672 Maklakov, A. A. *et al.* (2008) Sex-Specific Fitness Effects of Nutrient Intake on Reproduction
673 and Lifespan, *Current Biology*, 18(14), pp. 1062–1066. doi: 10.1016/j.cub.2008.06.059.
- 674 Masoro, E. J. (2000) Caloric restriction and aging: an update, *Experimental Gerontology*,
675 35(3), pp. 299–305. doi: 10.1016/S0531-5565(00)00084-X.
- 676 Masoro, E. J. (2005) Overview of caloric restriction and ageing, *Mechanisms of Ageing and*
677 *Development*, 126, pp. 913–922. doi: 10.1016/j.mad.2005.03.012.
- 678 Mattison, J. A. *et al.* (2017) Caloric restriction improves health and survival of rhesus
679 monkeys, *Nature Communications*, 8, p. 14063. doi: 10.1038/ncomms14063.
- 680 Mattson, M. P., Longo, V. D. and Harvie, M. (2017) Impact of intermittent fasting on health
681 and disease processes, *Ageing Research Reviews*, 39, pp. 46–58. doi:
682 10.1016/j.arr.2016.10.005.
- 683 Mehanna, H. M., Moledina, J. and Travis, J. (2008) Refeeding syndrome: what it is, and how
684 to prevent and treat it, *BMJ*, 336(7659), pp. 1495–1498. doi: 10.1136/bmj.a301.
- 685 Min, K. J. *et al.* (2007) Counting calories in *Drosophila* diet restriction, *Experimental*
686 *Gerontology*, 42(3), pp. 247–251. doi: 10.1016/j.exger.2006.10.009.
- 687 Mitchell, S. J. *et al.* (2016) Effects of Sex, Strain, and Energy Intake on Hallmarks of Aging in
688 Mice, *Cell Metabolism*, 23(6), pp. 1093–1112. doi: 10.1016/j.cmet.2016.05.027.
- 689 Mitchell, S. J. *et al.* (2019) Daily Fasting Improves Health and Survival in Male Mice
690 Independent of Diet Composition and Calories, *Cell Metabolism*, 29(1), p. 221–228.e3. doi:
691 10.1016/j.cmet.2018.08.011.

- 692 O'Brien, D. M. *et al.* (2008) Use of stable isotopes to examine how dietary restriction extends
693 *Drosophila* lifespan, *Current Biology*, 18(4), pp. 155–156. doi: 10.1016/j.cub.2008.01.021.
- 694 Patterson, R. E. *et al.* (2015) Intermittent Fasting and Human Metabolic Health, *Journal of*
695 *the Academy of Nutrition and Dietetics*, 115(8), pp. 1203–1212. doi:
696 10.1016/j.jand.2015.02.018.
- 697 Pletcher, S. D., Libert, S. and Skorupa, D. (2005) Flies and their Golden Apples: The effect
698 of dietary restriction on *Drosophila* aging and age-dependent gene expression, *Ageing*
699 *Research Reviews*, 4(4), pp. 451–480. doi: 10.1016/j.arr.2005.06.007.
- 700 Rattan, S. I. S. (2008) Hormesis in aging, *Ageing Research Reviews*, 7(1), pp. 63–78. doi:
701 10.1016/j.arr.2007.03.002.
- 702 Redman, L. M. *et al.* (2018) Metabolic slowing and reduced oxidative damage with sustained
703 caloric restriction support the rate of living and oxidative damage theories of aging, *Cell*
704 *Metabolism*, 27(4), p. 805–815.e4. doi: 10.1016/j.cmet.2018.02.019.
- 705 Regan, J. C. *et al.* (2016) Sex difference in pathology of the ageing gut mediates the greater
706 response of female lifespan to dietary restriction., *eLife*, 5, p. e10956. doi:
707 10.7554/eLife.10956.
- 708 Ren, C., Finkel, S. E. and Tower, J. (2009) Conditional inhibition of autophagy genes in adult
709 *Drosophila* impairs immunity without compromising longevity, *Experimental Gerontology*,
710 44(3), pp. 228–235. doi: 10.1016/j.exger.2008.10.002.
- 711 Ripatti, S. and Palmgren, J. (2000) Estimation of multivariate frailty models using penalized
712 partial likelihood., *Biometrics*, 56(4), pp. 1016–22.
- 713 Ro, J. *et al.* (2016) Serotonin signaling mediates protein valuation and aging, *eLife*, pp. 1–
714 21. doi: 10.7554/eLife.16843.
- 715 Rusli, F. *et al.* (2018) Plasticity of lifelong calorie-restricted C57BL/6J mice in adapting to a
716 medium-fat diet intervention at old age, *Aging Cell*, 17(2), p. e12696. doi:
717 10.1111/accel.12696.
- 718 Selman, C. (2014) Dietary restriction and the pursuit of effective mimetics, *Proceedings of*
719 *the Nutrition Society*, 73(2), pp. 260–270. doi: 10.1017/S0029665113003832.
- 720 Selman, C. and Hempenstall, S. (2012) Evidence of a metabolic memory to early-life dietary
721 restriction in male C57BL/6 mice, *Longevity & Healthspan*, 1(1), p. 2. doi: 10.1186/2046-

- 722 2395-1-2.
- 723 Shanley, D. P. and Kirkwood, T. B. L. (2000) Calorie restriction and aging: a life history
724 analysis, *Evolution*, 54(3), pp. 740–750.
- 725 Simons, M. J. P., Koch, W. and Verhulst, S. (2013) Dietary restriction of rodents decreases
726 aging rate without affecting initial mortality rate - a meta-analysis, *Aging Cell*, 12(3), pp. 410–
727 414. doi: 10.1111/accel.12061.
- 728 Sinclair, D. A. (2005) Toward a unified theory of caloric restriction and longevity regulation.
729 doi: 10.1016/j.mad.2005.03.019.
- 730 Solon-Biet, S. M. *et al.* (2014) The ratio of macronutrients, not caloric intake, dictates
731 cardiometabolic health, aging, and longevity in ad libitum-fed mice, *Cell Metabolism*, 19(3),
732 pp. 418–430. doi: 10.1016/j.cmet.2014.02.009.
- 733 Speakman, J. R. and Mitchell, S. E. (2011) Caloric restriction, *Molecular Aspects of*
734 *Medicine*, 32(3), pp. 159–221. doi: 10.1016/j.mam.2011.07.001.
- 735 Stearns, S. C. (1989) Trade-Offs in Life-History Evolution, *Functional Ecology*, 3(3), pp. 259–
736 268. doi: 10.2307/2389364.
- 737 Swindell, W. R. (2012) Dietary restriction in rats and mice: A meta-analysis and review of the
738 evidence for genotype-dependent effects on lifespan, *Ageing Research Reviews*, 11(2), pp.
739 254–270. doi: 10.1016/j.arr.2011.12.006.
- 740 Tatar, M. (2011) The plate half-full: Status of research on the mechanisms of dietary
741 restriction in *Drosophila melanogaster*, *Experimental Gerontology*, 46(5), pp. 363–368. doi:
742 10.1016/j.exger.2010.12.002.
- 743 Tatar, M., Khazaeli, A. A. and Curtsinger, J. W. (1997) Chaperoning extended life, *Nature*,
744 390(6655), pp. 30–30. doi: 10.1038/36237.
- 745 Therneau, T. M. *et al.* (2003) Penalized Survival Models and Frailty, *Journal of*
746 *Computational and Graphical Statistics*, 12(1), pp. 156–175. doi: 10.1198/1061860031365.
- 747 Waithe, D. *et al.* (2015) QuantiFly: Robust trainable software for automated *Drosophila* egg
748 counting, *PLoS ONE*, 10(5), pp. 1–16. doi: 10.1371/journal.pone.0127659.
- 749 Weir, H. J. *et al.* (2017) Dietary Restriction and AMPK Increase Lifespan via Mitochondrial
750 Network and Peroxisome Remodeling, *Cell Metabolism*, 26(6), p. 884–896.e5. doi:
751 10.1016/j.cmet.2017.09.024.

- 752 Whitaker, R. *et al.* (2014) Dietary switch reveals fast coordinated gene expression changes
753 in *Drosophila melanogaster*, *Aging*, 6(5), pp. 355–368. doi: 10.18632/aging.100662.
- 754 Wilson, K. A. *et al.* (2017) Genome-wide analysis reveals distinct genetic mechanisms of
755 diet-dependent lifespan and healthspan in *D. melanogaster*, *bioRxiv*, 3(415). doi:
756 <https://doi.org/10.1101/153791>
- 757 Wong, A. C.-N., Dobson, A. J. and Douglas, A. E. (2014) Gut microbiota dictates the
758 metabolic response of *Drosophila* to diet, *Journal of Experimental Biology*, 217(11), pp.
759 1894–1901. doi: 10.1242/jeb.101725.
- 760 Xie, K. *et al.* (2017) Every-other-day feeding extends lifespan but fails to delay many
761 symptoms of aging in mice, *Nature Communications*, 8(1), p. 155. doi: 10.1038/s41467-017-
762 00178-3.
- 763 Zajitschek, F. *et al.* (2018) Evolution under dietary restriction decouples survival from
764 fecundity in *Drosophila melanogaster* females, *The Journals of Gerontology: Series A*. doi:
765 10.1093/gerona/gly070.

Main figures

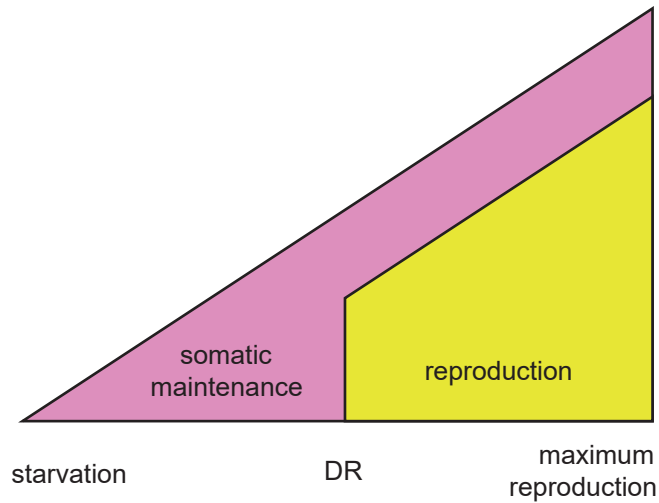


Fig 1. Schematic of the evolutionary model of DR. Resource availability is varied from left to right, from very low (where starvation would occur) to very high (where maximum reproduction would occur). The theoretical optimal allocation to somatic maintenance (pink) versus reproduction (yellow) is depicted at a given resource availability. When resource availability decreases, investment in both somatic maintenance and reproduction is reduced, until a threshold is met. Below this point resources are so scarce that investment in reproduction does not yield a fitness return. This could occur when offspring produced cannot recruit into the population due to the harsh resource environment, or because the capital (start-up) costs of breeding cannot be met. Here, investment in reproduction is lost and is wholly allocated to somatic maintenance. It is this evolved resource allocation decision to invest into somatic maintenance under DR conditions, that is thought to underlie lifespan extension under DR.

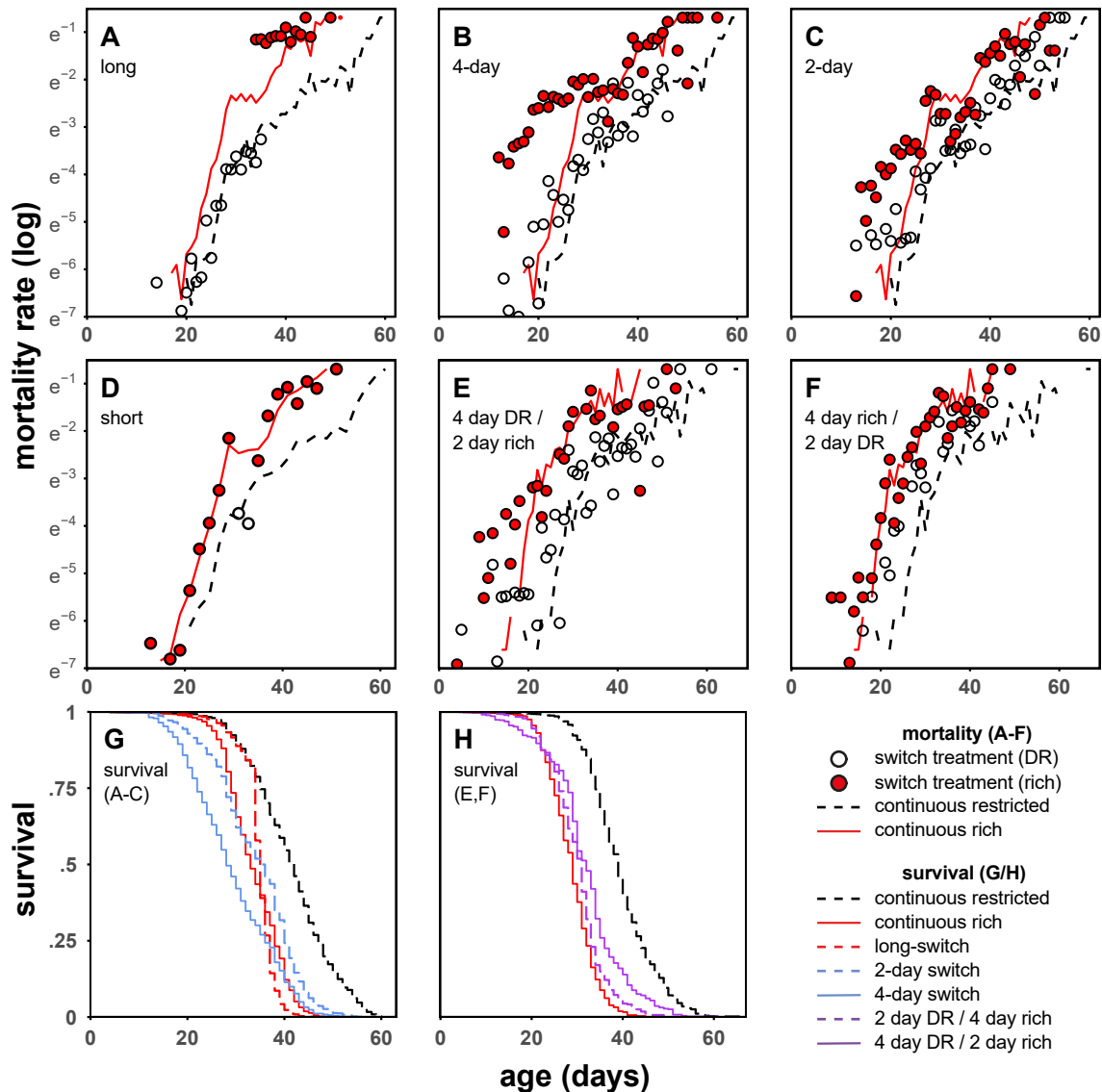


Fig 2. The effect of different dietary regimes on age-specific mortality risk in DGRP-195. N = 19,086 total. N = 995-3,769 per treatment. Mortality risk at continuous rich and restricted diets are plotted as lines. Dietary switch treatments are plotted as points. The exacerbation of mortality due to switch phenotypes is observable as the difference between mortality at continuous rich diet (red line), and mortality of switch treatment when on a rich diet (red points). A – long-switch. When returning to a rich diet after a long period of DR, mortality is exacerbated compared to flies fed a rich diet continuously. B – 4-day switch. Switching from a DR to a rich diet repeatedly every four days, increases mortality on rich diets compared to continuously rich fed flies. Flies are still able to modulate their mortality in response to DR, even when diet fluctuates rapidly. C – 2-day switch. Mortality on rich diets is only mildly increased and flies still respond to DR even when it is only imposed for two days. D – short reverse-switch. After a long period on a rich diet, DR for 4 days returns flies to mortality of continuous DR. The x-axis of panel D is age-adjusted to correct for age differences (1-3 days) at the time of the diet switch for illustration purposes only. E – 4-day DR, 2-day rich switch (4-to-2 day switch). Flies respond to DR, but encounter a slightly blunted effect compared to continuous DR. F – 4-day rich, 2-day DR switch (4-to-2 day switch). The effect of DR is reduced when imposed for 2 days following 4 days on a rich diet. G – survival plot of panels A-C with associated continuous diet controls. Total survival of both the 4-day switching dietary regime and the long-switch is lowered compared to

continuously rich diets, despite flies spending a considerable extent of their lives on restricted diets. Flies on DR outlive all other categories. H – survival plot of panels E/F with associated continuous diet controls. Despite spending up to two-thirds of their lives on DR in these asymmetrical regimes, survival benefits are modest, compared to continuous DR. Dietary switch treatments contain daily time-points (dots) for the dietary switch treatments, as treatments were mirrored and balanced, with half of flies starting on DR, and half on rich diets.

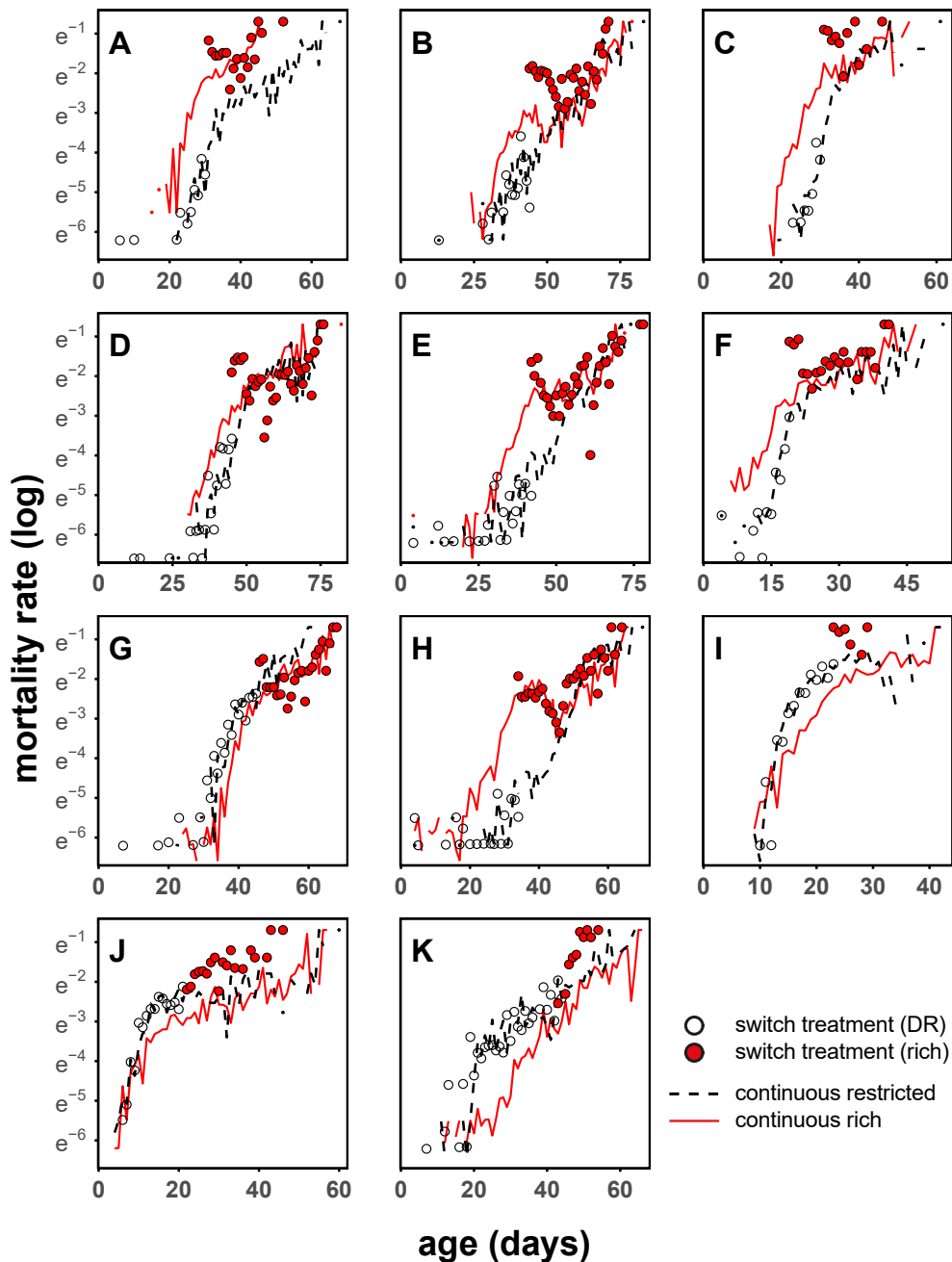


Fig 3. Long-switch treatment in a panel of 11 DGRP genotypes. A – 195; B – 105; C – 217; D – 441; E – 705; F – 707; G – 136; H – 362; I – 239; J – 335; K – 853. N = 29,702 total; ~2,725 per genotype; 13,375 for continuous rich treatments, and ~8,170 each for the two other treatments. The dietary switch for the long-switch treatment group occurred at 45-65% of continuous rich treatment flies. All panels contain daily time-points as in Fig.2. Exposure to a high nutrient diet after a period of DR resulted in marked increase in mortality compared to a continuous rich diet in all lines (9 out of 11 significant). There was genetic variation in this response with DGRP-136 (G) and DGRP-362 (H) showing the smallest effects. This marked overshoot was not contingent upon DR extending lifespan. Lines that showed ‘starvation’ on a DR diet still showed significant overshoots when they were switched to a rich diet, where recovery from starvation was expected, even when compared to continuous DR diets (I, J, K).

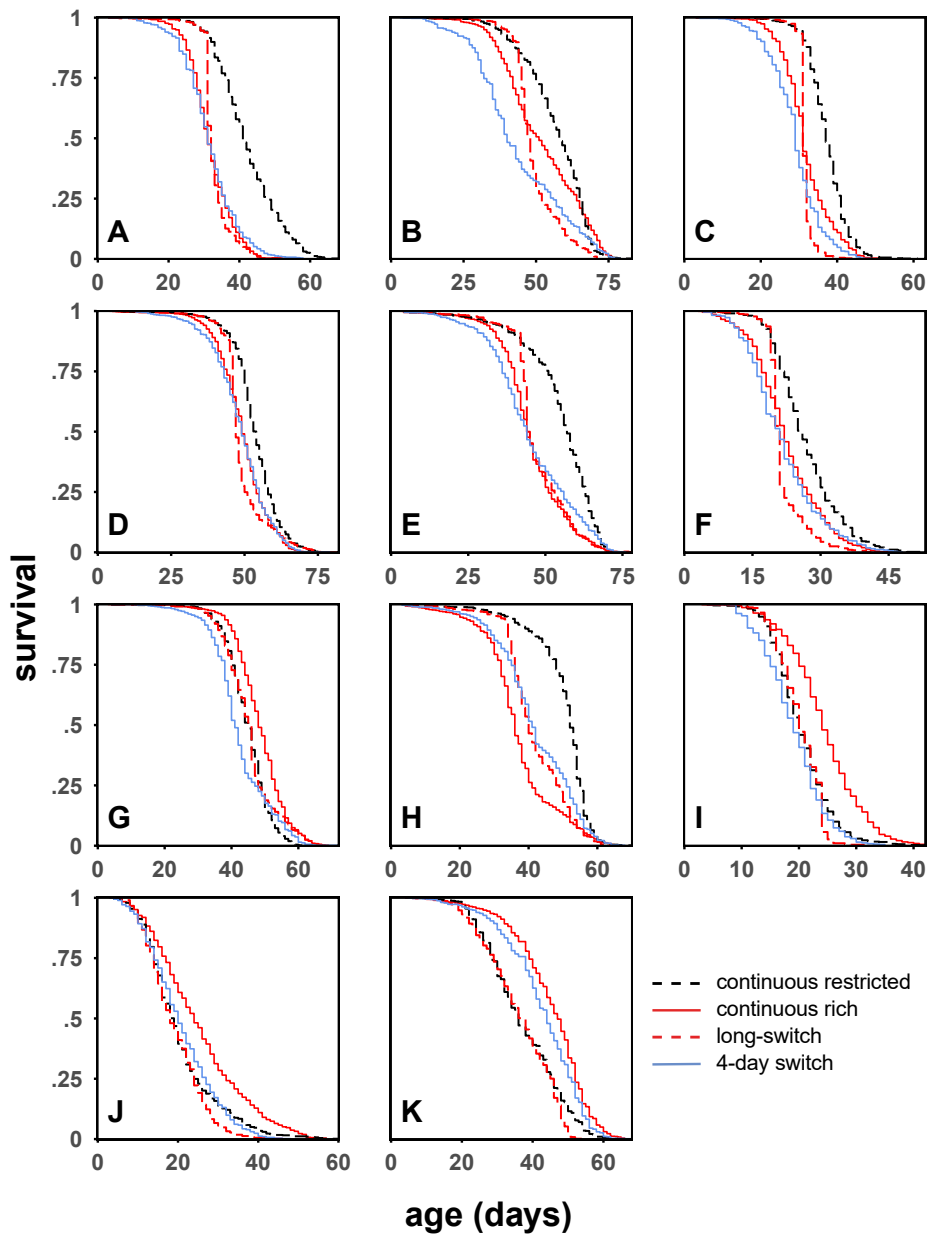


Fig 4. Survival curves of DGRP panel for both dietary regimes. A – 195; B – 105; C – 217; D – 441; E – 705; F – 707; G – 136; H – 362; I – 239; J – 335; K – 853. Total survival on the different dietary regimes across the genetic panel tested. Rich diets after a period of DR resulted in such an increase in mortality, that total survival of the cohort was lower (or equal to) those fed a continuous rich diet for their whole life (A-F). N = 37,897 total; ~3,450 per genotype; 13,375 for continuous rich treatments, and ~8,170 for all other treatments.

Supplementary figures

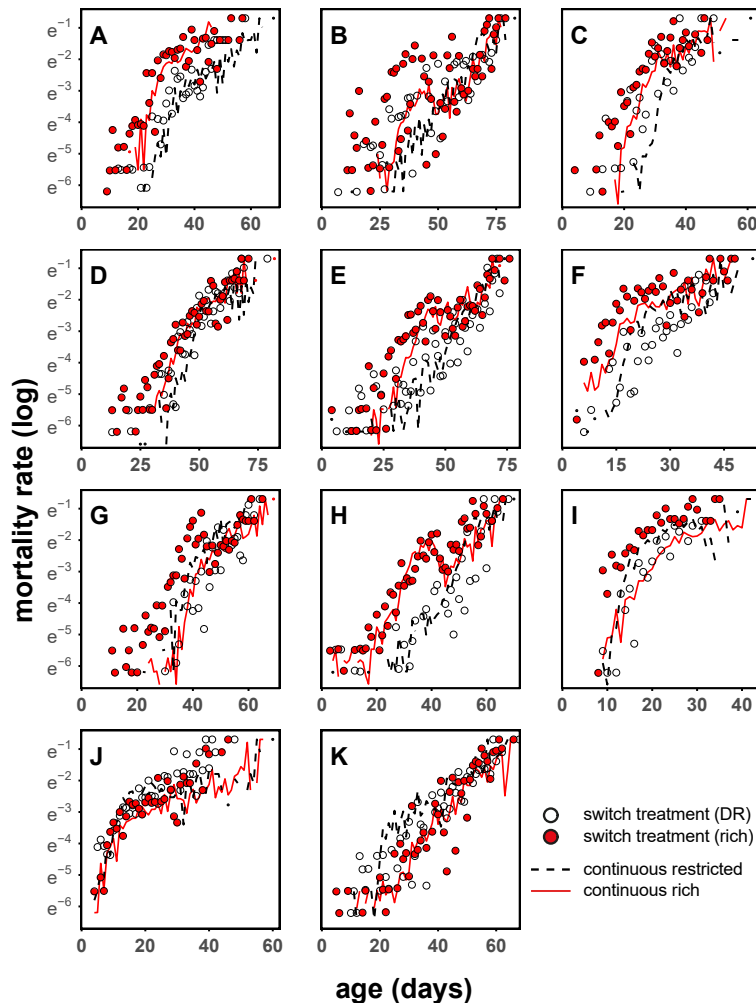


Figure S1. 4-day switch treatment in a panel of 11 DGRP genotypes. A – 195; B – 105; C – 217; D – 441; E – 705; F – 707; G – 136; H – 362; I – 239; J – 335; K – 853. Continuous rich, and restricted treatments plotted as lines (solid red and dashed black, respectively). Switch treatments plotted as points (white and red). The exacerbation of mortality due to switch phenotypes is observable as the difference between mortality at continuous rich diet (red line), and mortality of switch treatment when on a rich diet (red points). N = 29,740 total; ~2,725 per genotype; 13,375 for continuous rich treatments, and ~8,170 for continuous rich and 4-day switch treatments. Dietary switch for 4-day switch treatment group occurred every 4 days, and was mirrored at each time point. Continuous rich and restricted treatments are twinned with long switch treatment experiment (Fig. 2). All panels contain daily time-points, as in Fig.2.

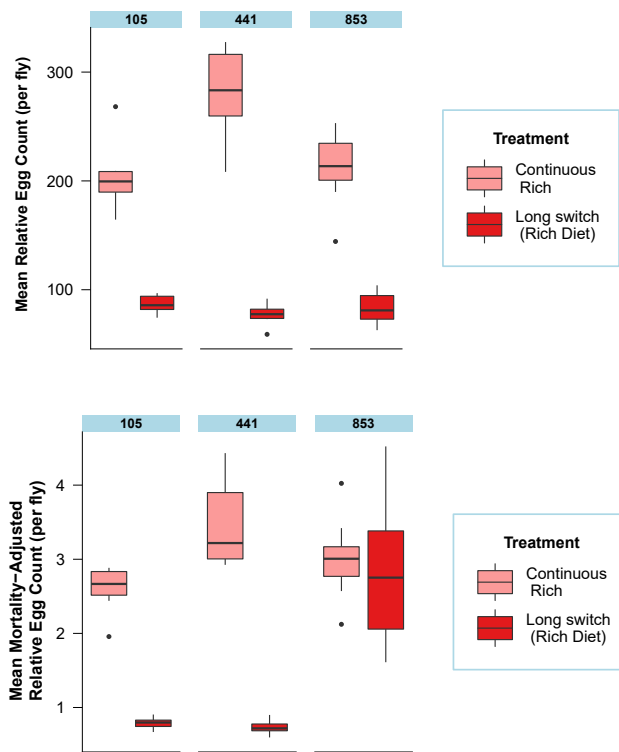


Figure S2. Fecundity analysis of long switch treatment from 3 DGRP genotypes. No compensation via fecundity for reduced lifespans in switch treatment. Raw (above) and mortality corrected (below) egg counts of DGRP-105; 441; 853 from long switch treatment experiment (Fig. 2). Counts generated using QuantiFly software. Counts are relative, but directly comparable. Flies assayed between age 44-47 days, with boxplots (median, with the box depicting a quartile each way, and whiskers showing the range; outliers plotted as dots) aggregating totals. Each cage was assayed once, on the first scoring day post dietary switch. Mortality corrected counts (below) generated by dividing raw counts, by N flies remaining in cage at the time of assaying. N = on average, 7 cages assayed, per treatment, per genotype.

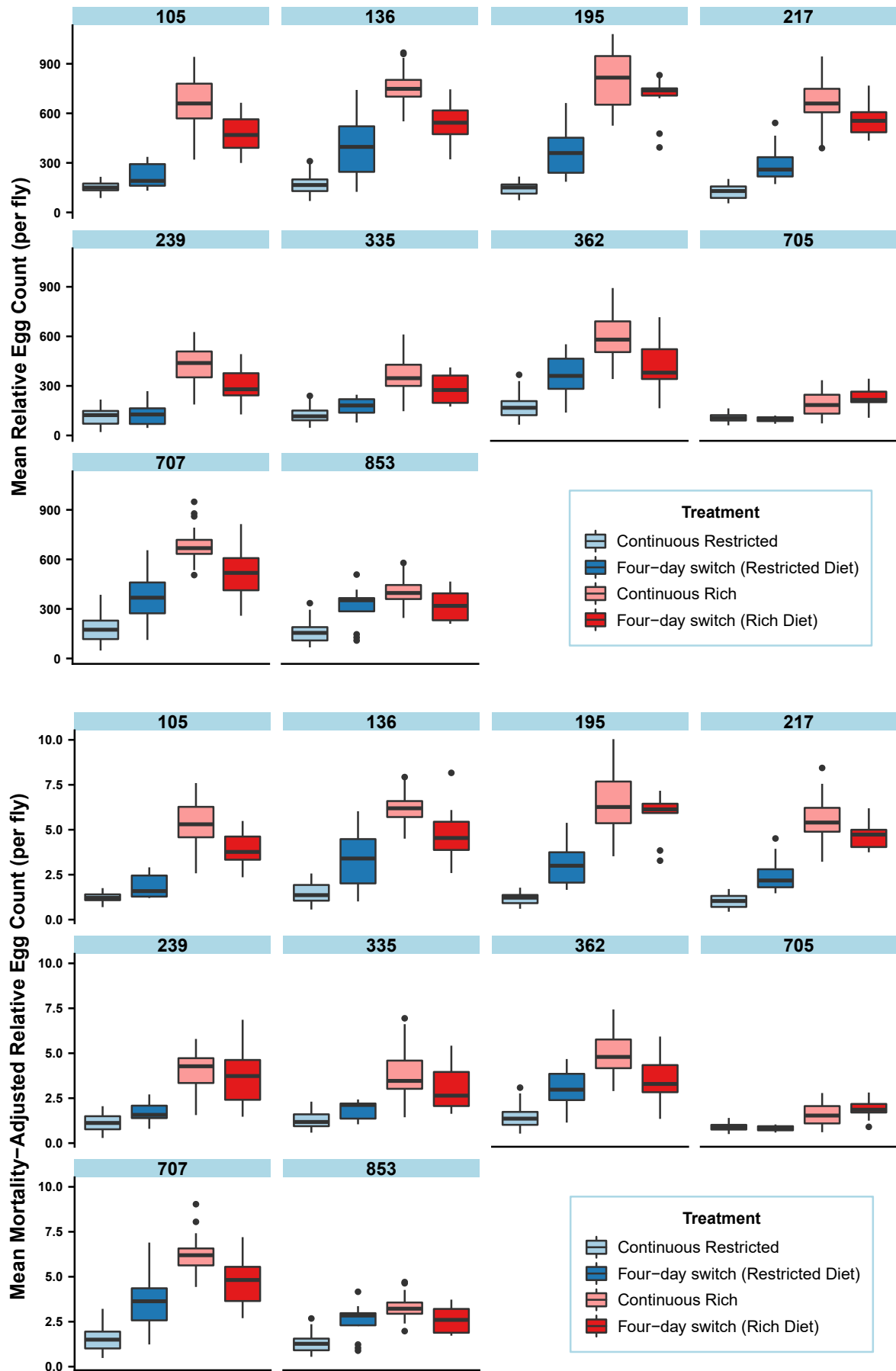


Figure S3. Fecundity analysis of 4-day switch treatment from 10 DGRP genotypes. No compensation via fecundity for reduced lifespans in switch treatment. Raw (above) and mortality corrected (below) egg counts of DGRP-105; 136; 195; 217; 239; 335; 362; 705; 707; 853 from long switch treatment experiment (Fig. 2). Counts generated using QuantiFly software. Counts are relative, but directly comparable. Flies assayed between age 8-21 days, with boxplots aggregating totals (median, with the box depicting a quartile each way, and whiskers showing the range; outliers plotted as dots). Each cage was assayed on 4 consecutive scoring days. Mortality corrected counts (below) generated by dividing raw counts, by N flies remaining in cage at the time of assaying. N = on average, 7 cages assayed, per treatment, per genotype.

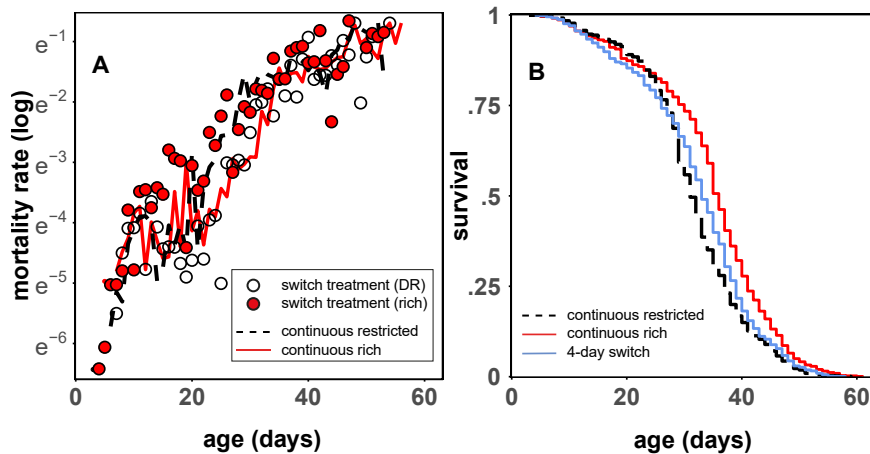


Figure S4. 4-day switch treatment of DGRP-195 males. A – 4-day switch mortality; B – 4-day switch survival. Muted response to 4-day switch treatment in males. Rich diet in the 4-day switch increased mortality compared to continuously rich fed flies. Continuous rich, and restricted treatments plotted as lines (solid red and dashed black, respectively). Switch treatment plotted as points (white and red). The exacerbation of mortality due to switch phenotypes is observable as the difference between mortality at continuous rich diet (red line), and mortality of switch treatment when on a rich diet (red points). N = 4,429 total; ~1,475 per treatment. Dietary switch for 4-day switch treatment group occurred every 4 days, and was mirrored at each time point. Both panels contain daily time-points, as in Fig.2.

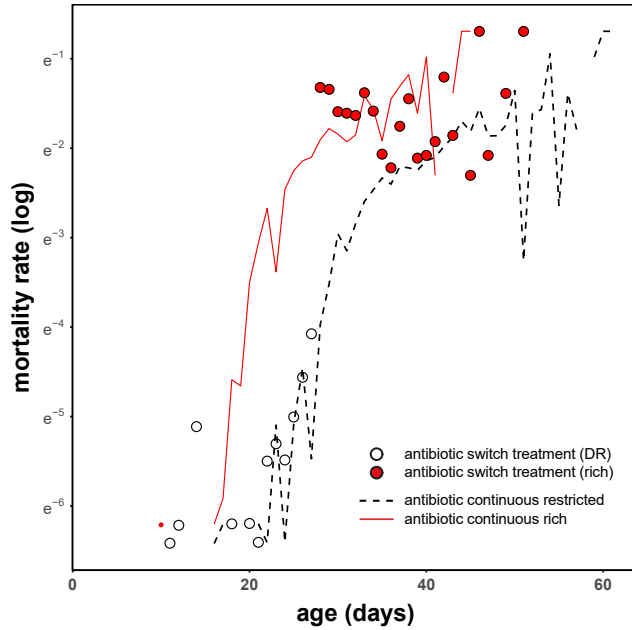


Figure S5. Antibiotic long switch treatment of DGRP-195. Long switch phenotype independent of antibiotic treatment. Antibiotic treatment took place in all treatments four days prior to dietary switch, and concluded eight days thereafter. Continuous rich, and restricted treatments plotted as lines (solid red and dashed black, respectively). Switch treatment plotted as points (white and red). The exacerbation of mortality due to switch phenotypes is observable as the difference between mortality at continuous rich diet (red line), and mortality of switch treatment when on a rich diet (red points). N = 2,605 total; ~870 per treatment. (See Fig. S7 for confirmation of ablation of microbiome). Figure contains daily time-points, as in Fig.2.

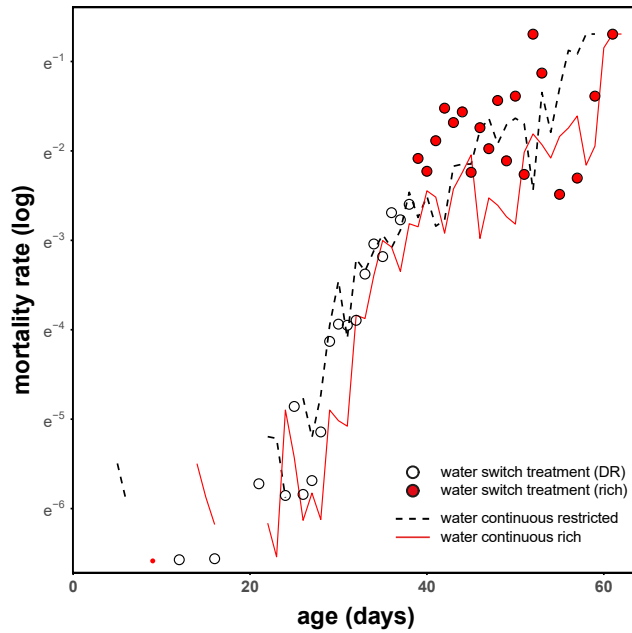
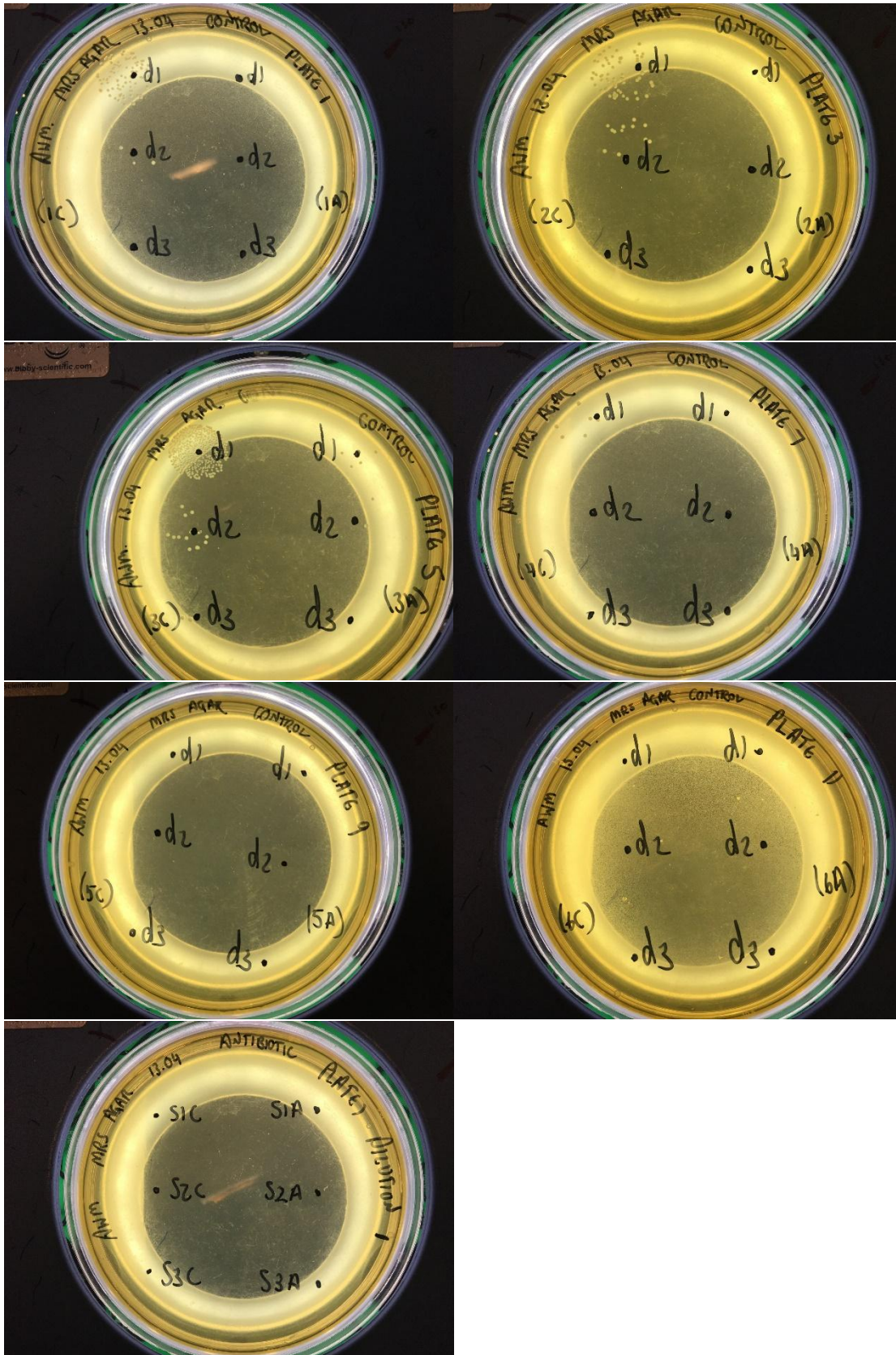


Figure S6. Water supplemented long switch treatment of DGRP-195. Long switch phenotype independent of water supplementation. Water supplementation took place in all treatments throughout life of the cage. Continuous rich, and restricted treatments plotted as lines (solid red and dashed black, respectively). Switch treatment plotted as points (white and red). The exacerbation of mortality due to switch phenotypes is observable as the difference between mortality at continuous rich diet (red line), and mortality of switch treatment when on a rich diet (red points). N = 2,562 total; ~850 per treatment. **NB** water supplementation did change the response to DR. This effect was followed up with an experiment containing five different genotypes across a range of diets, with only a shift in reaction norm detected (manuscript in preparation). DR is not explained by dehydration, as is sometimes suggested, nor is the long switch phenotype. Figure contains daily time-points, as in Fig.2.



Sample	Colonies at dilution 1	Colonies at dilution 2	Colonies at dilution 3	Colonies at antibiotic plate dilutions
1 (control)	75	3	0	0
2 (control)	50	12	1	0
3 (control)	250	12	2	0
4 (control)	8	0	0	NA
5 (control)	0	0	0	NA
6 (control)	1	0	0	NA
7 (antibiotic treated)	0	0	0	0
8 (antibiotic treated)	0	0	0	0
9 (antibiotic treated)	6	2	0	0
10 (antibiotic treated)	0	0	0	NA
11 (antibiotic treated)	0	0	0	NA
12 (antibiotic treated)	0	0	0	NA

Figure / Table S7. Confirmation of ablation of microbiome. Images of bacterial colonies visible on MRS agar plates (above) and estimated colony count (below). Twelve samples ceded from control, or antibiotic-treated cages. Lysate was diluted post-homogenisation and grown on control, or antibiotic-treated plates. No growth visible under antibiotic treated plate conditions. 98.4% reduction of total microbiota observed at dilution 1. 92.5% reduction of total microbiota observed at dilution 2.

Table S1. Effect of dietary regimes on interval-based log hazard ratios of mortality in DGRP-195.

coefficient	Full Model				Versus continuous DR		
	estimate	exp (estimate)	s.e.	p	estimate	exp (estimate)	p
DR	-1.179	0.308	0.047	< 0.001			
long switch	1.310	3.705	0.055	< 0.001			
4-day switch	0.858	2.358	0.062	< 0.001			
2-day switch	0.125	1.133	0.063	0.047			
short reverse-switch	0.272	1.312	0.051	< 0.001			
4-day switch * DR	-0.409	0.665	0.085	< 0.001	0.449	1.567	< 0.001
2-day switch * DR	0.255	1.291	0.074	0.001	0.380	1.462	< 0.001
short switch * DR	-0.466	0.627	0.116	< 0.001	-0.195	0.823	0.092

Table S2. Effect of dietary regimes on longevity in DGRP-195.

coefficient	Full Model			
	estimate	exp (estimate)	s.e.	p
DR	-1.136	0.321	0.058	< 0.001
2-day switch	-0.224	0.799	0.064	< 0.001
4-day switch	0.386	1.471	0.064	< 0.001

Table S3. Time-dependent effect of mortality increase induced by a long-switch from reduced to rich diets in DGRP-195

coefficient	Full Model			
	estimate	exp (estimate)	s.e.	p
day 2	1.629	5.101	0.085	< 0.001
day 4	0.847	2.334	0.093	< 0.001
day 6	0.452	1.572	0.121	< 0.001
day 8	-0.045	0.956	0.216	0.84
day 10	-0.226	0.798	0.369	0.54
day 12	-0.077	0.926	0.601	0.9
> day 14	-1.038	0.354	1.066	0.33

Table S4. Time-dependent effect of mortality increase induced by a 4-day switch in DGRP-195

coefficient	Full Model			
	estimate	exp (estimate)	s.e.	p
DR	-1.303	0.272	0.094	< 0.001
2nd interval	0.227	1.255	0.055	< 0.001
2nd interval * DR	-0.715	0.489	0.143	< 0.001

Table S5. Effect of asymmetrical dietary regimes on mortality in DGRP-195.

coefficient	Full Model				Versus continuous DR		
	estimate	exp (estimate)	s.e.	p	estimate	exp (estimate)	p
DR	-1.684	0.186	0.087	< 0.001			
4d-DR 2d-Rich	-0.209	0.811	0.097	0.032			
2d-DR 4d-Rich	-0.157	0.854	0.095	0.097			
4d-DR 2d-Rich * DR	0.458	1.581	0.113	< 0.001	0.249	1.283	0.027
2d-DR 4d-Rich * DR	0.929	2.531	0.124	< 0.001	0.771	2.163	< 0.001

Table S6. Effect of asymmetrical dietary regimes on longevity in DGRP-195.

coefficient	Full Model			
	estimate	exp (estimate)	s.e.	p
DR	-1.692	0.184	0.087	< 0.001
4d-DR 2d-Rich	-0.805	0.447	0.095	< 0.001
2d-DR 4d-Rich	-0.343	0.710	0.094	< 0.001

Table S7. Mortality increases in response to a rich diet after a period of DR (long-switch) across a panel of 11 DGRP lines (195 is reference)

coefficient	Full Model				Effect of DR			Long switch versus rich diet		
	estimate	exp	s.e.	p	estimate	exp	p	estimate	exp	p
DR	-1.723	0.179	0.157	< 0.001						
long switch	0.973	2.645	0.160	< 0.001						
105	-2.681	0.068	0.146	< 0.001						
136	-1.969	0.140	0.152	< 0.001						
217	-0.080	0.923	0.159	0.61						
239	0.899	2.457	0.156	< 0.001						
335	0.190	1.209	0.155	0.22						
362	-1.022	0.360	0.155	< 0.001						
441	-2.107	0.122	0.152	< 0.001						
705	-1.861	0.156	0.154	< 0.001						
707	1.073	2.925	0.156	< 0.001						
853	-1.803	0.165	0.152	< 0.001						
105 * DR	1.296	3.655	0.217	< 0.001	-0.427	0.653	0.049			
136 * DR	1.995	7.355	0.213	< 0.001	0.273	1.314	0.199			
217 * DR	0.622	1.863	0.219	0.004	-1.100	0.333	< 0.001			
239 * DR	2.427	11.319	0.211	< 0.001	0.704	2.022	0.001			
335 * DR	2.947	19.052	0.208	< 0.001	1.225	3.403	< 0.001			
362 * DR	0.343	1.409	0.219	0.12	-1.379	0.252	< 0.001			
441 * DR	1.002	2.724	0.215	< 0.001	-0.720	0.487	0.001			
705 * DR	0.602	1.826	0.217	0.006	-1.120	0.326	< 0.001			
707 * DR	0.886	2.424	0.215	< 0.001	-0.837	0.433	< 0.001			
853 * DR	2.549	12.796	0.210	< 0.001	0.827	2.286	< 0.001			
105 * long switch	0.168	1.183	0.220	0.44				1.141	3.130	< 0.001
136 * long switch	-0.381	0.683	0.222	0.086				0.592	1.807	0.008
217 * long switch	1.152	3.165	0.226	< 0.001				2.125	8.370	< 0.001
239 * long switch	0.870	2.387	0.224	< 0.001				1.843	6.313	< 0.001
335 * long switch	-0.305	0.737	0.221	0.17				0.668	1.950	0.002
362 * long switch	-0.982	0.375	0.223	< 0.001				-0.009	0.991	0.968
441 * long switch	-0.172	0.842	0.220	0.43				0.800	2.226	< 0.001
705 * long switch	-0.605	0.546	0.222	0.006				0.368	1.445	0.097
707 * long switch	0.188	1.206	0.218	0.39				1.160	3.191	< 0.001
853 * long switch	0.117	1.124	0.225	0.6				1.090	2.973	< 0.001

Table S8. Models run within each genotype testing for increases in response to a rich diet after a period of DR (long-switch)

coefficient	Estimates from individual models			
	estimate	exp	s.e.	p
105 DR	-0.501	0.149	0.606	0.001
136 DR	0.647	0.120	1.910	<0.001
195 DR	-1.737	0.197	0.176	<0.001
217 DR	-1.102	0.178	0.332	<0.001
239 DR	0.775	0.071	2.170	<0.001
335 DR	0.570	0.115	1.768	<0.001
362 DR	-1.201	0.130	0.301	<0.001
441 DR	-0.503	0.101	0.605	<0.001
705 DR	-0.935	0.095	0.393	<0.001
707 DR	-0.646	0.076	0.524	<0.001
853 DR	0.828	0.093	2.288	<0.001
105 long switch	1.258	0.156	3.520	<0.001
136 long switch	0.113	0.132	1.120	0.39
195 long switch	0.453	0.203	1.573	0.025
217 long switch	1.650	0.187	5.205	<0.001
239 long switch	1.483	0.103	4.406	<0.001
335 long switch	0.881	0.136	2.413	<0.001
362 long switch	0.145	0.137	1.157	0.29
441 long switch	0.313	0.109	1.368	0.004
705 long switch	0.329	0.102	1.389	0.001
707 long switch	0.854	0.083	2.348	<0.001
853 long switch	1.373	0.122	3.949	<0.001

Table S9. Effect of altering DR and rich diets every 4 days (4-day switch) on longevity across 11 DGRP lines (195 is reference)

coefficient	Full Model				Effect compared to rich diet		
	estimate	exp	s.e.	p	estimate	exp	p
4-day switch	-0.140	0.869	0.114	0.22			
105	-2.476	0.084	0.096	<0.001			
136	-1.858	0.156	0.098	<0.001			
217	-0.065	0.937	0.100	0.52			
239	0.918	2.505	0.099	<0.001			
335	0.226	1.254	0.100	0.024			
362	-0.988	0.373	0.099	<0.001			
441	-1.969	0.140	0.097	<0.001			
705	-1.769	0.171	0.098	<0.001			
707	1.054	2.869	0.100	<0.001			
853	-1.697	0.183	0.098	<0.001			
105 * 4-day switch	0.644	1.904	0.159	<0.001	0.504	1.656	0.002
136 * 4-day switch	0.632	1.880	0.157	<0.001	0.492	1.635	0.002
217 * 4-day switch	0.490	1.632	0.158	0.002	0.350	1.419	0.027
239 * 4-day switch	1.053	2.866	0.157	<0.001	0.913	2.491	<0.001
335 * 4-day switch	1.026	2.789	0.158	<0.001	0.886	2.425	<0.001
362 * 4-day switch	-0.343	0.710	0.157	0.029	-0.483	0.617	0.002
441 * 4-day switch	0.163	1.177	0.158	0.3	0.023	1.023	0.885
705 * 4-day switch	-0.032	0.968	0.157	0.84	-0.172	0.842	0.273
707 * 4-day switch	0.153	1.165	0.158	0.33	0.013	1.013	0.935
853 * 4-day switch	0.365	1.441	0.157	0.02	0.225	1.253	0.152

Table S10. Effect of altering DR and rich diets every 4 days (4 day switch) on mortality at each diet, across 11 DGRP lines (195 is reference)

coefficient	Compared to continuous diets												
	Full Model				Effect of DR			4 day switch at rich diet			4 day switch at DR		
	estimate	exp	s.e.	p	estimate	exp	p	estimate	exp	p	estimate	exp	p
DR	-1.378	0.252	0.129	<0.001									
4-day switch	0.305	1.357	0.132	0.02									
4-day switch * DR	-0.078	0.925	0.164	0.63									
105	-2.649	0.071	0.109	<0.001									
136	-1.907	0.148	0.111	<0.001									
217	-0.064	0.938	0.115	0.58									
239	0.907	2.476	0.113	<0.001									
335	0.227	1.255	0.114	0.046									
362	-1.024	0.359	0.113	<0.001									
441	-2.046	0.129	0.111	<0.001									
705	-1.846	0.158	0.112	<0.001									
707	1.051	2.859	0.113	<0.001									
853	-1.733	0.177	0.111	<0.001									
105 * DR	1.171	3.224	0.180	<0.001	-0.207	0.813	0.248						
136 * DR	1.804	6.071	0.178	<0.001	0.426	1.531	0.017						
217 * DR	0.822	2.275	0.178	<0.001	-0.556	0.574	0.002						
239 * DR	2.046	7.740	0.179	<0.001	0.668	1.951	<0.001						
335 * DR	2.104	8.197	0.178	<0.001	0.726	2.066	<0.001						
362 * DR	0.307	1.359	0.179	0.087	-1.071	0.343	<0.001						
441 * DR	0.994	2.701	0.179	<0.001	-0.384	0.681	0.031						
705 * DR	0.527	1.695	0.178	0.003	-0.851	0.427	<0.001						
707 * DR	0.797	2.218	0.179	<0.001	-0.581	0.559	0.001						
853 * DR	2.090	8.086	0.178	<0.001	0.712	2.038	<0.001						
105 * 4-day switch	0.530	1.699	0.184	0.004				0.835	2.305	<0.001			
136 * 4-day switch	0.648	1.912	0.182	<0.001				0.953	2.595	<0.001			
217 * 4-day switch	0.372	1.451	0.183	0.042				0.677	1.969	<0.001			
239 * 4-day switch	1.019	2.771	0.182	<0.001				1.324	3.759	<0.001			
335 * 4-day switch	0.451	1.569	0.186	0.015				0.756	2.129	<0.001			
362 * 4-day switch	-0.285	0.752	0.182	0.12				0.020	1.020	0.914			
441 * 4-day switch	-0.158	0.854	0.184	0.39				0.148	1.159	0.421			
705 * 4-day switch	-0.185	0.831	0.182	0.31				0.120	1.127	0.511			
707 * 4-day switch	0.167	1.182	0.183	0.36				0.472	1.603	0.01			
853 * 4-day switch	-0.140	0.869	0.185	0.45				0.165	1.179	0.372			
105 * 4-day switch * DR	-0.580	0.560	0.223	0.009							0.177	1.194	0.427
136 * 4-day switch * DR	-1.735	0.176	0.226	<0.001							-0.859	0.423	<0.001
217 * 4-day switch * DR	-0.272	0.762	0.223	0.22							0.327	1.387	0.142
239 * 4-day switch * DR	-1.846	0.158	0.225	<0.001							-0.600	0.549	0.008
335 * 4-day switch * DR	-0.400	0.670	0.219	0.068							0.277	1.319	0.207
362 * 4-day switch * DR	-0.838	0.433	0.238	<0.001							-0.896	0.408	<0.001
441 * 4-day switch * DR	0.179	1.196	0.219	0.41							0.249	1.282	0.256
705 * 4-day switch * DR	-0.050	0.951	0.222	0.82							-0.009	0.992	0.969
707 * 4-day switch * DR	-0.910	0.403	0.232	<0.001							-0.516	0.597	0.026
853 * 4-day switch * DR	-0.477	0.621	0.218	0.028							-0.390	0.677	0.073

Table S11. Interval models run within each genotype testing for differential effects of diet in the 4-day switch dietary regime

coefficient	Estimates from individual models			
	estimate	exp	s.e.	p
105 DR	-0.162	0.129	0.850	0.21
136 DR	0.576	0.134	1.780	< 0.001
195 DR	-1.464	0.197	0.231	< 0.001
217 DR	-0.695	0.132	0.499	< 0.001
239 DR	0.697	0.075	2.008	< 0.001
335 DR	0.516	0.128	1.675	< 0.001
362 DR	-0.954	0.105	0.385	< 0.001
441 DR	-0.466	0.140	0.628	0.001
705 DR	-0.741	0.078	0.476	< 0.001
707 DR	-0.483	0.053	0.617	< 0.001
853 DR	0.738	0.106	2.093	< 0.001
105 4-day switch	0.789	0.132	2.201	< 0.001
136 4-day switch	1.090	0.135	2.974	< 0.001
195 4-day switch	0.265	0.195	1.303	0.18
217 4-day switch	0.756	0.134	2.131	< 0.001
239 4-day switch	1.367	0.078	3.925	< 0.001
335 4-day switch	0.351	0.137	1.421	0.01
362 4-day switch	0.065	0.106	1.068	0.54
441 4-day switch	0.139	0.143	1.149	0.33
705 4-day switch	0.171	0.081	1.186	0.036
707 4-day switch	0.543	0.054	1.720	< 0.001
853 4-day switch	0.176	0.113	1.192	0.12
105 4-day switch * DR	-0.686	0.155	0.503	< 0.001
136 4-day switch * DR	-1.965	0.165	0.140	< 0.001
195 4-day switch * DR	0.018	0.221	1.018	0.94
217 4-day switch * DR	-0.166	0.158	0.847	0.29
239 4-day switch * DR	-1.956	0.119	0.141	< 0.001
335 4-day switch * DR	-0.292	0.150	0.746	0.052
362 4-day switch * DR	-1.023	0.160	0.360	< 0.001
441 4-day switch * DR	0.199	0.159	1.220	0.21
705 4-day switch * DR	-0.242	0.116	0.785	0.037
707 4-day switch * DR	-1.113	0.120	0.329	< 0.001
853 4-day switch * DR	-0.579	0.129	0.560	< 0.001

Table S12. Models run within each genotype testing for increases in response to a rich diet after a period of DR (long-switch) but within lines that showed starvation only, and with DR as reference category

coefficient	Estimates from individual models			
	estimate	exp	s.e.	p
136 rich diet	-0.647	0.524	0.120	< 0.001
239 rich diet	-0.775	0.461	0.071	< 0.001
335 rich diet	-0.570	0.566	0.115	< 0.001
853 rich diet	-0.828	0.437	0.093	< 0.001
136 long switch	0.113	1.120	0.132	0.39
239 long switch	1.483	4.406	0.103	< 0.001
335 long switch	0.881	2.413	0.136	< 0.001
853 long switch	1.373	3.949	0.122	< 0.001

Table S13. Interval models run within each genotype testing for differential effects of diet in the 4-day switch dietary regime, but within lines that showed starvation only, and with DR as reference category.

coefficient	Estimates from individual models			
	estimate	exp	s.e.	p
136 rich diet	-0.576	0.562	0.134	<0.001
239 rich diet	-0.697	0.498	0.075	<0.001
335 rich diet	-0.516	0.597	0.128	<0.001
853 rich diet	-0.738	0.478	0.106	<0.001
136 4-day switch	-0.875	0.417	0.169	<0.001
239 4-day switch	-0.589	0.555	0.111	<0.001
335 4-day switch	0.059	1.061	0.148	0.69
853 4-day switch	-0.403	0.668	0.124	0.001
136 4-day switch * rich diet	1.965	7.135	0.165	<0.001
239 4-day switch * rich diet	1.956	7.071	0.119	<0.001
335 4-day switch * rich diet	0.292	1.340	0.150	0.052
853 4-day switch * rich diet	0.579	1.785	0.129	<0.001

Table S14. Linear model of estimates of (log-transformed) fecundity (from Quantify) in the long-switch dietary treatment. A return to rich conditions from DR, resulted in reduced fecundity, rather than the predicted increase.

coefficient	Full model		
	estimate	s.e.	p
rich diet	2.281	0.038	<0.001
long switch	-0.367	0.037	<0.001
441	0.149	0.036	<0.001
853	0.010	0.035	0.768
age 45	0.040	0.041	0.339
age 46	0.028	0.042	0.512
age 47	-0.018	0.054	0.736
441 * long switch	-0.195	0.050	<0.001
853 * long switch	-0.043	0.050	0.4

Table S15. Linear model of estimates of (log-transformed) fecundity (from Quantify), corrected for number of flies in the cage, in the long-switch dietary treatment. A return to rich conditions from DR, resulted in reduced fecundity, rather than the predicted increase. Note, this correction uses the census after egg-laying and thus overcorrects for mortality. Estimates compared are thus biased upwards, and provide the most sensitive test for an upregulation in response to dietary treatment.

coefficient	Full model		
	estimate	s.e.	p
Intercept	0.374	0.048	<0.001
long switch	-0.515	0.046	<0.001
441	0.079	0.046	0.092
853	0.041	0.044	0.355
age 45	0.049	0.052	0.349
age 46	0.060	0.053	0.262
age 47	0.132	0.067	0.058
441 * long switch	-0.158	0.063	0.017
853 * long switch	0.471	0.063	<0.001

Table S16. Mixed model (correcting for Cage) of estimates of (log-transformed) fecundity (from Quantifly) in the 4-day switching paradigm. Repeated short-term exposure to DR did not increase, but rather decreased fecundity, relative to a continuous rich diet.

coefficient	Full model		
	estimate	s.e.	p
Intercept	2.924	0.057	< 0.001
DR	-0.642	0.030	< 0.001
4-day switch	-0.131	0.047	0.005
136	0.028	0.032	0.39
195	0.092	0.033	0.006
217	0.018	0.032	0.569
239	-0.162	0.032	< 0.001
335	-0.302	0.032	< 0.001
362	-0.092	0.033	0.005
705	-0.570	0.032	< 0.001
707	-0.021	0.032	0.513
853	-0.248	0.032	< 0.001
Age 9	-0.046	0.059	0.444
Age 10	-0.073	0.054	0.171
Age 11	-0.040	0.055	0.474
Age 12	0.011	0.053	0.841
Age 13	-0.086	0.054	0.11
Age 14	-0.104	0.053	0.049
Age 15	-0.115	0.054	0.032
Age 16	-0.139	0.053	0.009
Age 17	-0.070	0.054	0.196
Age 18	-0.049	0.055	0.375
Age 19	-0.202	0.056	< 0.001
Age 20	-0.212	0.056	< 0.001
Age 21	-0.367	0.072	< 0.001
4-day switch * DR	0.287	0.065	< 0.001
136 * DR	-0.036	0.043	0.401
195 * DR	-0.114	0.044	0.01
217 * DR	-0.109	0.043	0.011
239 * DR	0.017	0.043	0.691
335 * DR	0.164	0.043	< 0.001
362 * DR	0.072	0.043	0.09
705 * DR	0.422	0.043	< 0.001
707 * DR	0.032	0.043	0.447
853 * DR	0.211	0.043	< 0.001
136 * 4-day switch	-0.014	0.066	0.829
195 * 4-day switch	0.071	0.067	0.285
217 * 4-day switch	0.053	0.066	0.424
239 * 4-day switch	-0.029	0.066	0.656
335 * 4-day switch	0.015	0.066	0.818
362 * 4-day switch	-0.060	0.066	0.362
705 * 4-day switch	0.219	0.066	0.001
707 * 4-day switch	0.002	0.066	0.976
853 * 4-day switch	0.017	0.066	0.795
136 * 4-day switch * DR	0.215	0.092	0.02
195 * 4-day switch * DR	0.162	0.093	0.081
217 * 4-day switch * DR	0.166	0.092	0.071
239 * 4-day switch * DR	-0.048	0.092	0.601
335 * 4-day switch * DR	-0.023	0.092	0.805
362 * 4-day switch * DR	0.218	0.092	0.018
705 * 4-day switch * DR	-0.422	0.092	< 0.001
707 * 4-day switch * DR	0.149	0.092	0.106
853 * 4-day switch * DR	0.112	0.092	0.225

Table S17. Mixed model (correcting for Cage) of estimates of (log-transformed) fecundity (from Quantifly), corrected for number of flies in the cage, in the 4-day switching paradigm. Repeated short-term exposure to DR did not increase, but rather decreased fecundity, relative to a continuous rich diet. Note, this correction uses the census after egg-laying and thus overcorrects for mortality. Estimates compared are thus biased upwards, and provide the most sensitive test for an upregulation in response to dietary treatment.

coefficient	Full model		
	estimate	s.e.	p
Intercept	0.812	0.056	< 0.001
DR	-0.640	0.030	< 0.001
4-day switch	-0.126	0.046	0.006
136	0.051	0.032	0.111
195	0.094	0.033	0.004
217	0.029	0.031	0.363
239	-0.124	0.031	< 0.001
335	-0.180	0.032	< 0.001
362	-0.057	0.032	0.08
705	-0.556	0.031	< 0.001
707	0.048	0.032	0.133
853	-0.225	0.032	< 0.001
Age 9	-0.053	0.059	0.37
Age 10	-0.089	0.053	0.094
Age 11	-0.059	0.055	0.283
Age 12	0.008	0.053	0.883
Age 13	-0.083	0.053	0.12
Age 14	-0.099	0.052	0.06
Age 15	-0.107	0.053	0.045
Age 16	-0.120	0.053	0.022
Age 17	-0.043	0.054	0.419
Age 18	-0.027	0.055	0.626
Age 19	-0.161	0.055	0.003
Age 20	-0.167	0.055	0.003
Age 21	-0.151	0.071	0.034
4-day switch * DR	0.297	0.064	< 0.001
136 * DR	-0.027	0.042	0.517
195 * DR	-0.119	0.044	0.007
217 * DR	-0.114	0.042	0.007
239 * DR	0.074	0.042	0.081
335 * DR	0.170	0.042	< 0.001
362 * DR	0.064	0.042	0.129
705 * DR	0.418	0.042	< 0.001
707 * DR	0.000	0.042	0.992
853 * DR	0.213	0.042	< 0.001
136 * 4-day switch	0.003	0.065	0.969
195 * 4-day switch	0.078	0.066	0.236
217 * 4-day switch	0.050	0.065	0.446
239 * 4-day switch	0.076	0.065	0.243
335 * 4-day switch	0.019	0.065	0.767
362 * 4-day switch	-0.062	0.065	0.342
705 * 4-day switch	0.217	0.065	0.001
707 * 4-day switch	-0.002	0.065	0.97
853 * 4-day switch	0.013	0.065	0.841
136 * 4-day switch * DR	0.178	0.091	0.051
195 * 4-day switch * DR	0.156	0.092	0.089
217 * 4-day switch * DR	0.164	0.091	0.072
239 * 4-day switch * DR	-0.060	0.091	0.511
335 * 4-day switch * DR	-0.030	0.091	0.738
362 * 4-day switch * DR	0.215	0.091	0.018
705 * 4-day switch * DR	-0.431	0.091	< 0.001
707 * 4-day switch * DR	0.207	0.091	0.023
853 * 4-day switch * DR	0.098	0.091	0.283

Table S18. Effect of returning to a rich diet after a period of DR (long-switch) after ablation of the microbiome (Antibiotics on rich diet is reference)

coefficient	Full Model			
	estimate	exp (estimate)	s.e.	p
DR on Antibiotics	-0.894	0.409	0.181	< 0.001
long switch on Antibiotics	1.313	3.717	0.142	< 0.001
DR	-1.201	0.301	0.223	< 0.001
Rich diet	-0.087	0.917	0.159	0.59

Table S19. Effect of returning to a rich diet after a period of DR (long-switch) with supplementation of water

coefficient	Full Model			
	estimate	exp (estimate)	s.e.	p
DR with water supplementation	0.648	1.911	0.138	< 0.001
long switch with water supplementation	0.385	1.470	0.126	0.002

Table S20. Effect of returning to a rich diet after a period of DR (long-switch) with flies in isolation in vials. Test from chi-square tests on proportions by age.

Age	Dead				Mortality rate				P value from proportion test	
	DR	Rich to DR	Rich	DR to Rich (long switch)	DR	Rich to DR	Rich	DR to Rich (long switch)	Rich versus DR	Rich versus long switch
28	0	0	5	16	0.000	0	0.100	0.320	0.063	0.014
30	0	0	8	5	0.000	0	0.178	0.152	0.006	1
32	1	0	16	13	0.020	0	0.432	0.464	<0.001	0.997
34	1	0	8	4	0.020	0	0.381	0.267	<0.001	0.72
36	1	0	8	2	0.020	0	0.667	0.200	<0.001	0.079
38	4	0	2	2	0.087	0	0.500	0.250	0.102	0.829
40	3	0	0	3	0.071	0	0.000	0.500	1	1
42	2	0	0	3	0.051	0	0.000	1.000	1	0.505

Table S21. Effect of switching from DR to rich food every four days (4-day switch) in males

coefficient	Full Model			
	estimate	exp (estimate)	s.e.	p
DR	0.362	1.437	0.117	0.002
4-day switch	0.410	1.507	0.120	0.001
4-day switch * DR	-0.768	0.464	0.129	<0.001