

# Variation across 141,456 human exomes and genomes reveals the spectrum of loss-of-function intolerance across human protein-coding genes

Konrad J. Karczewski<sup>1,2</sup>, Laurent C. Francioli<sup>1,2</sup>, Grace Tiao<sup>1,2</sup>, Beryl B. Cummings<sup>1,2,3</sup>, Jessica Alföldi<sup>1,2</sup>, Qingbo Wang<sup>1,2,4</sup>, Ryan L. Collins<sup>1,4,5</sup>, Kristen M. Laricchia<sup>1,2</sup>, Andrea Ganna<sup>1,2,6</sup>, Daniel P. Birnbaum<sup>1,2</sup>, Laura D. Gauthier<sup>7</sup>, Harrison Brand<sup>1,5</sup>, Matthew Solomonson<sup>1,2</sup>, Nicholas A. Watts<sup>1,2</sup>, Daniel Rhodes<sup>8</sup>, Moriel Singer-Berk<sup>1,2</sup>, Eleina M. England<sup>1,2</sup>, Eleanor G. Seaby<sup>1,2</sup>, Jack A. Kosmicki<sup>1,2,4</sup>, Raymond K. Walters<sup>1,2,9</sup>, Katherine Tashman<sup>1,2,9</sup>, Yossi Farjoun<sup>7</sup>, Eric Banks<sup>7</sup>, Timothy Poterba<sup>1,2,9</sup>, Arcturus Wang<sup>1,2,9</sup>, Cotton Seed<sup>1,2,9</sup>, Nicola Whiffin<sup>1,2,10,11</sup>, Jessica X. Chong<sup>12</sup>, Kaitlin E. Samocha<sup>13</sup>, Emma Pierce-Hoffman<sup>1,2</sup>, Zachary Zappala<sup>1,2,14</sup>, Anne H. O'Donnell-Luria<sup>1,2,15,16</sup>, Eric Vallabh Minikel<sup>1</sup>, Ben Weisburd<sup>7</sup>, Monkol Lek<sup>17</sup>, James S. Ware<sup>1,10,11</sup>, Christopher Vittal<sup>2,9</sup>, Irina M. Armean<sup>1,2,18</sup>, Louis Bergelson<sup>7</sup>, Kristian Cibulskis<sup>7</sup>, Kristen M. Connolly<sup>19</sup>, Miguel Covarrubias<sup>7</sup>, Stacey Donnelly<sup>1</sup>, Steven Ferriera<sup>20</sup>, Stacey Gabriel<sup>20</sup>, Jeff Gentry<sup>7</sup>, Namrata Gupta<sup>1,20</sup>, Thibault Jeandet<sup>7</sup>, Diane Kaplan<sup>7</sup>, Christopher Llanwarne<sup>7</sup>, Ruchi Munshi<sup>7</sup>, Sam Novod<sup>7</sup>, Nikelle Petrillo<sup>7</sup>, David Roazen<sup>7</sup>, Valentin Ruano-Rubio<sup>7</sup>, Andrea Saltzman<sup>1</sup>, Molly Schleicher<sup>1</sup>, Jose Soto<sup>7</sup>, Kathleen Tibbetts<sup>7</sup>, Charlotte Tolonen<sup>7</sup>, Gordon Wade<sup>7</sup>, Michael E. Talkowski<sup>1,5,21</sup>, The Genome Aggregation Database Consortium, Benjamin M. Neale<sup>1,2,9</sup>, Mark J. Daly<sup>1,2,6,9</sup>, Daniel G. MacArthur<sup>1,2</sup>

<sup>1</sup>Program in Medical and Population Genetics, Broad Institute of MIT and Harvard, Cambridge, Massachusetts 02142, USA

<sup>2</sup>Analytic and Translational Genetics Unit, Massachusetts General Hospital, Boston, Massachusetts 02114, USA

<sup>3</sup>Program in Biological and Biomedical Sciences, Harvard Medical School, Boston, MA, 02115, USA

<sup>4</sup>Program in Bioinformatics and Integrative Genomics, Harvard Medical School, Boston, MA 02115, USA

<sup>5</sup>Center for Genomic Medicine, Massachusetts General Hospital, Boston, MA 02114, USA

<sup>6</sup>Institute for Molecular Medicine Finland, Helsinki, Finland

<sup>7</sup>Data Sciences Platform, Broad Institute of MIT and Harvard, Cambridge, Massachusetts 02142, USA

<sup>8</sup>Centre for Translational Bioinformatics, William Harvey Research Institute, Barts and the London School of Medicine and Dentistry, Queen Mary University of London and Barts Health NHS Trust, London, UK

<sup>9</sup>Stanley Center for Psychiatric Research, Broad Institute of MIT and Harvard, Cambridge, Massachusetts 02142, USA

<sup>10</sup>National Heart & Lung Institute and MRC London Institute of Medical Sciences, Imperial College London, London, UK

<sup>11</sup>Cardiovascular Research Centre, Royal Brompton & Harefield Hospitals NHS Trust, London, UK

<sup>12</sup>Department of Pediatrics, University of Washington, Seattle, Washington, 98195, USA

<sup>13</sup>Wellcome Sanger Institute, Wellcome Genome Campus, Hinxton, Cambridge CB10 1SA, UK

<sup>14</sup>Vertex Pharmaceuticals Inc. Boston, MA, 02210

<sup>15</sup>Division of Genetics and Genomics, Boston Children's Hospital, Boston, Massachusetts 02115, USA

<sup>16</sup>Department of Pediatrics, Harvard Medical School, Boston, Massachusetts 02115, USA

<sup>17</sup>Department of Genetics, Yale School of Medicine, New Haven, Connecticut

<sup>18</sup>European Molecular Biology Laboratory, European Bioinformatics Institute, Wellcome Genome Campus, Hinxton, Cambridge, CB10 1SD, United Kingdom

<sup>19</sup>Genomics Platform, Broad Institute of MIT and Harvard, Cambridge, Massachusetts 02142, USA

<sup>20</sup>Broad Genomics, Broad Institute of MIT and Harvard, Cambridge, Massachusetts 02142, USA

<sup>21</sup>Department of Neurology, Harvard Medical School, Boston, MA, USA.

## Summary (150 words)

Genetic variants that inactivate protein-coding genes are a powerful source of information about the phenotypic consequences of gene disruption: genes critical for an organism's function will be depleted for such variants in natural populations, while non-essential genes will tolerate their accumulation. However, predicted loss-of-function (pLoF) variants are enriched for annotation errors, and tend to be found at extremely low frequencies, so their analysis requires careful variant annotation and very large sample sizes. Here, we describe the aggregation of 125,748 exomes and 15,708 genomes from human sequencing studies into the Genome Aggregation Database (gnomAD). We identify 443,769 high-confidence pLoF variants in this cohort after filtering for sequencing and annotation artifacts. Using an improved human mutation rate model, we classify human protein-coding genes along a spectrum representing tolerance to inactivation, validate this classification using data from model organisms and engineered human cells, and show that it can be used to improve gene discovery power for both common and rare diseases.

# Introduction

The physiological function of most genes in the human genome remains unknown. In biology, as in many engineering and scientific fields, breaking the individual components of a complex system can provide valuable insight into the structure and behavior of that system. For discovery of gene function, a common approach is to introduce disruptive mutations into genes and assay their effects on cellular and physiological phenotypes in mutant organisms or cell lines<sup>1</sup>. Such studies have yielded valuable insight into eukaryotic physiology and have guided therapeutic design<sup>2</sup>. However, while model organism and human cell studies have been crucial in deciphering the function of many human genes, they remain imperfect proxies for human physiology.

Obvious ethical and technical constraints prevent the large-scale engineering of LoF mutations in humans. However, recent exome and genome sequencing projects have revealed a surprisingly high burden of natural pLoF variation in the human population, including stop-gained, essential splice, and frameshift variants<sup>3,4</sup>, which can serve as natural models for human gene inactivation. Such variants have already revealed much about human biology and disease mechanisms, through many decades of study of the genetic basis of severe Mendelian diseases<sup>5</sup>, many of which are driven by disruptive variants in either the heterozygous or homozygous state. These variants have also proved valuable in identifying potential therapeutic targets: confirmed LoF variants in PCSK9 have been causally linked to low LDL cholesterol levels<sup>6</sup>, leading ultimately to the development of multiple PCSK9 inhibitors now in clinical use for the reduction of cardiovascular disease risk. A systematic catalog of pLoF variants in humans and classification of genes along a spectrum of tolerance to inactivation would provide a valuable resource for medical genetics, identifying candidate disease-causing mutations, potential therapeutic targets, and windows into the normal function of many currently uncharacterized human genes.

A number of challenges arise when assessing LoF variants at scale. LoF variants are on

average deleterious, and are thus typically maintained at very low frequencies in the human population. Systematic genome-wide discovery of these variants requires whole exome or whole genome sequencing of very large numbers of samples. Additionally, LoF variants are enriched for false positives compared to synonymous or other benign variants, including mapping, genotyping (including somatic variation), and particularly, annotation errors<sup>3</sup>, and careful filtering is required to remove such artifacts.

Population surveys of coding variation enable the evaluation of the strength of natural selection at a gene or region level. As natural selection purges deleterious variants from human populations, methods to detect selection have modelled the reduction in variation (constraint)<sup>7</sup> or shift in the allele frequency distribution<sup>8</sup>, compared to an expectation. For analyses of selection on coding variation, synonymous variation provides a convenient baseline, controlling for other potential population genetic forces that may influence the amount of variation as well as technical features of the local sequence. We have previously applied a model of constraint to define a set of 3,230 genes with a high probability of intolerance to heterozygous pLoF variation (pLI)<sup>4</sup> and estimated the selection coefficient for variants these genes<sup>9</sup>. However, the ability to comprehensively characterize the degree of selection against pLoF variants is particularly limited, as for small genes, the expected number of mutations is still small, even for samples of up to 60,000 individuals<sup>4,10</sup>. Further, the previous dichotomization of pLI, although convenient for characterization of a set of genes, disguises variability in the degree of selective pressure against a given class of variation and overlooks more subtle levels of intolerance to pLoF variation. With larger sample sizes, a more accurate quantitative measure of selective pressure is a possibility.

Here, we describe the detection of pLoF variants in a cohort of 125,748 individuals with whole exome sequence data and 15,708 individuals with whole genome sequence data, as part of the Genome Aggregation Database (gnomAD; <https://gnomad.broadinstitute.org>), the successor to the Exome Aggregation Consortium (ExAC). We develop a continuous measure of

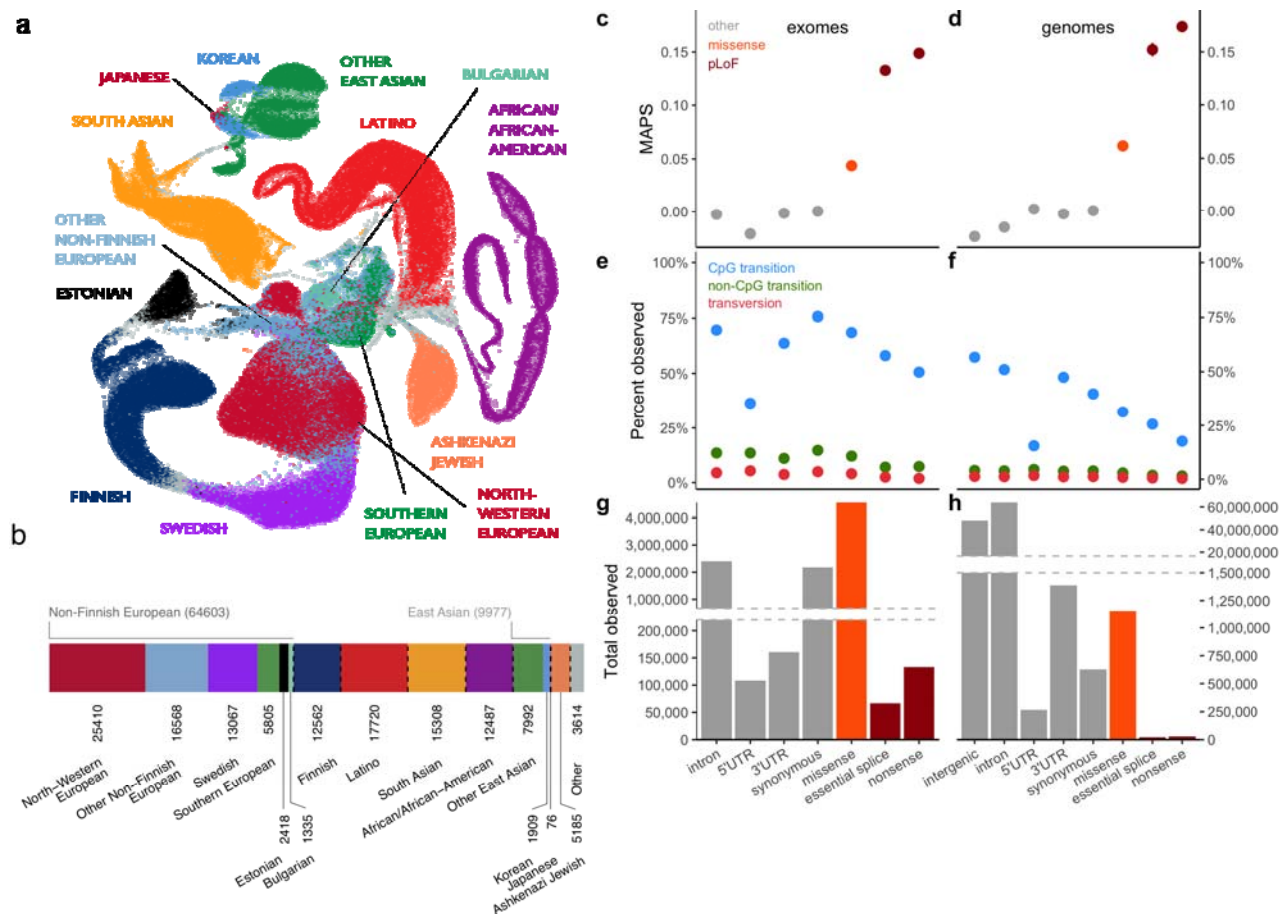
intolerance to pLoF variation, which places each gene on a spectrum of LoF intolerance. We validate this metric by comparing its distribution to several orthogonal indicators of constraint, including the incidence of structural variation and the essentiality of genes as measured through mouse gene knockout experiments and cellular inactivation assays. Finally, we demonstrate that this metric improves interpretation of genetic variants influencing rare disease and provides insight into common disease biology. These analyses provide the most comprehensive catalog to date of the sensitivity of human genes to disruption.

In a series of accompanying manuscripts, we also describe other complementary analyses of this data set. Using an overlapping set of 14,237 whole genomes, we report the discovery and characterization of a wide variety of structural variants (large deletions, duplications, insertions, or other rearrangements of DNA)<sup>11</sup>. We explore the value of pLoF variants for the discovery and validation of therapeutic drug targets<sup>12</sup>, and provide a case study of the use of these variants from gnomAD and other large reference data sets to validate the safety of inhibition of LRRK2, a candidate therapeutic target for Parkinson's disease<sup>13</sup>. By combining the gnomAD data set with a large collection of RNA sequencing data from adult human tissues<sup>14</sup>, we demonstrate the value of tissue expression data in the interpretation of genetic variation across a range of human diseases<sup>15</sup>. Finally, we characterize and investigate the impact of two understudied classes of human variation: multi-nucleotide variants<sup>16</sup> and variants creating or disrupting open reading frames in the 5' untranslated region of human genes<sup>17</sup>.

## **Creating a high-quality catalogue of variation**

We aggregated whole exome sequencing data from 199,558 individuals and whole genome sequencing data from 20,314 individuals. These data were obtained primarily from case-control studies of adult-onset common diseases, including cardiovascular disease, type 2 diabetes, and psychiatric disorders. Each dataset, totaling over 1.3 and 1.6 petabytes of raw

sequencing data respectively, was uniformly processed, joint variant calling was performed on each dataset using a standardized BWA-Picard-GATK pipeline, and all data processing and analysis was performed using Hail<sup>18</sup>. We performed stringent sample QC (Extended Data Fig. 1), removing samples with lower sequencing quality by a variety of metrics, second-degree or closer related individuals across both data types, samples with inadequate consent for release of aggregate data, and individuals known to have a severe childhood onset disease as well as their first-degree relatives. The final gnomAD release contains genetic variation from 125,748 exomes and 15,708 genomes from unique unrelated individuals with high-quality sequence data, spanning 6 global and 8 sub-continental ancestries (Fig. 1a,b), which we have made publicly available at <https://gnomad.broadinstitute.org>. We also provide subsets of the gnomAD datasets, which exclude individuals who are cases in case-control studies, or who are cases of a few particular disease types such as cancer and neurological disorders, or who are also aggregated in the Bravo TOPMed variant browser (<https://bravo.sph.umich.edu>).



**Figure 1 | Aggregation of 141,456 exome and genome sequences.** **a**, Uniform Manifold Approximation and Projection (UMAP) <sup>19,20</sup> plot depicting the ancestral diversity of all individuals in gnomAD, using 10 principal components. Note that long-range distances in UMAP space are not a proxy for genetic distance. **b**, The number of individuals by population and subpopulation in the gnomAD database. Colors representing populations in **a** & **b** are consistent. **c-d**, The mutability-adjusted proportion of singletons<sup>4</sup> (MAPS) is shown across functional categories for SNVs in exomes (**c**, x-axis shared with **e** and **g**) and genomes (**d**, x-axis shared with **f** and **h**). Higher values indicate an enrichment of lower frequency variants, suggesting increased deleteriousness. **e-f**, The proportion of possible variants observed for each functional class for exomes (**e**) and genomes (**f**). CpG transitions are more saturated, except where selection (e.g. pLoFs), or hypomethylation (5'UTR) decreases the number of observations. **g-h**, The total number of variants observed in each functional class for exomes (**g**) and genomes (**h**). Error bars in (**c-f**) represent 95% confidence intervals (note that in some cases these are fully contained within the plotted point).

Among these individuals, we discovered 17.2 million and 261.9 million variants in the exome and genome datasets, respectively; these variants were filtered using a custom random forest process (Supplementary Information) to 14.9 million and 229.9 million high-quality variants. Comparing our variant calls in two samples for which we had independent gold-



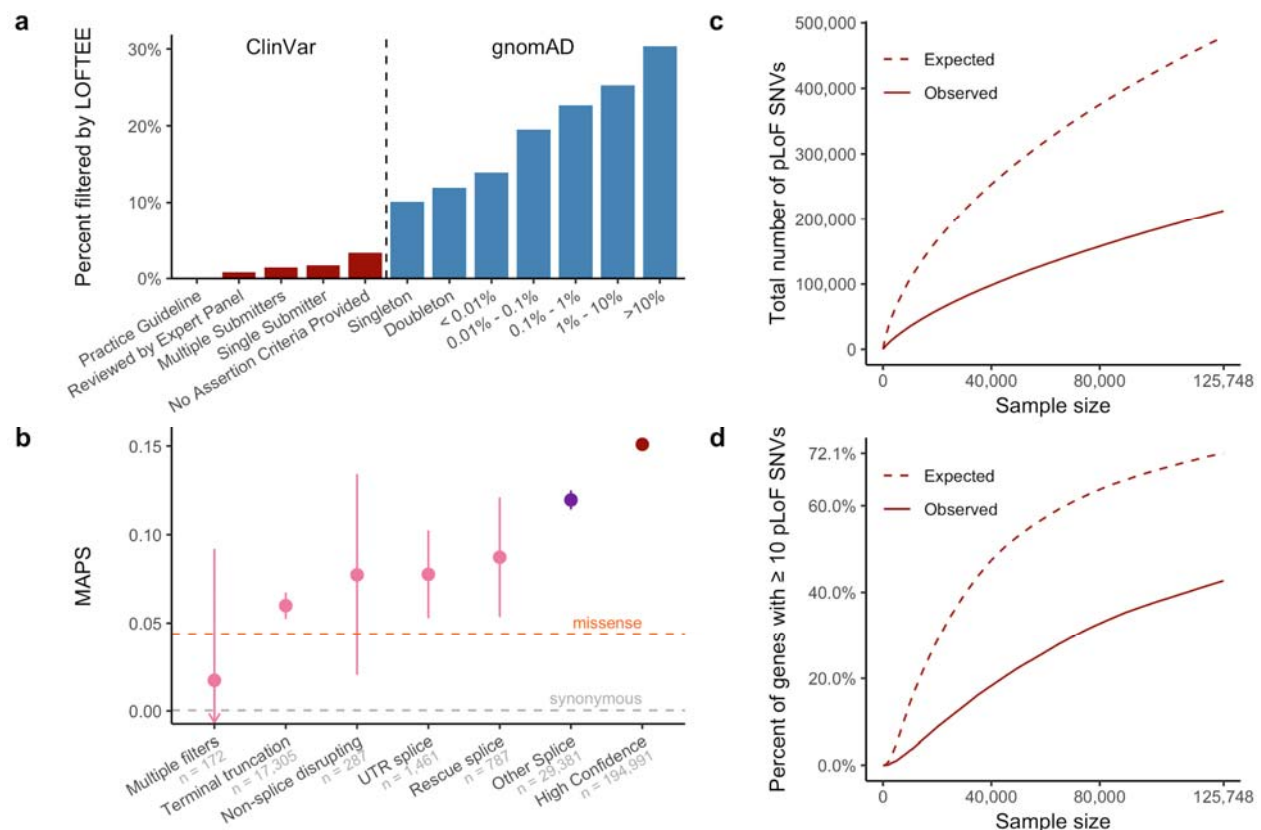
standard variant calls, we found that our filtering achieves very high precision (>99% for SNVs, >98.5% for indels in both exomes and genomes) and recall (>90% for SNVs and >82% for indels for both exomes and genomes) at the single sample level (Extended Data Fig. 2). In addition, we leveraged data from 4,568 and 212 trios included in our exome and genome callsets, respectively, to assess the quality of our rare variants). First, we show that our model retains over 97.8% of the transmitted singletons (singletons in the unrelated individuals that are transmitted to an offspring) on chromosome 20 (which was not used for model training) (Extended Data Fig. 3a-d). Second, the number of putative *de novo* calls after filtering are in line with expectations<sup>21</sup> (Extended Data Fig. 3e-h). Finally, our model had a recall of 97.3% for *de novo* SNVs and 98% for *de novo* indels based on 375 independently validated *de novo* variants in our whole-exome trios (295 SNVs and 80 indels, Extended Data Fig. 3i-j). Altogether, these results indicate that our filtering strategy produced a callset with high precision and recall for both common and rare variants.

These variants reflect the expected patterns of variation based on mutation and selection: we observe 84.9% of all possible consistently methylated CpG to TpG transitions that would create synonymous variants in the human exome (Supplementary Table 14), indicating that at this sample size we are beginning to approach mutational saturation of this highly mutable and weakly negatively selected variant class. However, we only observe 52% of methylated CpG stop-gained variants, illustrating the action of natural selection removing a substantial fraction of gene-disrupting variants from the population (Fig. 1c-h). Across all mutational contexts, only 11.5% and 3.7% of the possible synonymous and stop-gained variants, respectively, are observed in the exome dataset, indicating that current sample sizes remain far from capturing complete mutational saturation of the human exome (Extended Data Fig. 4).



## Identification of loss-of-function variants

Some LoF variants will result in embryonic lethality in humans in a heterozygous state, while others are benign even at homozygosity, with a spectrum of effects in between. Throughout this manuscript, we define predicted loss-of-function (pLoF) variants to be those which introduce a premature stop (stop-gained), shift reported transcriptional frame (frameshift), or alter the two essential splice-site nucleotides immediately to the left and right of each exon (splice) found in protein-coding transcripts, and ascertain their presence in the cohort of 125,748 individuals with exome sequence data. As these variants are enriched for annotation artifacts<sup>3</sup>, we developed the Loss-Of-Function Transcript Effect Estimator (LOFTEE) package, which applies stringent filtering criteria from first principles (such as removing terminal truncation variants, as well as rescued splice variants, that are predicted to escape nonsense-mediated decay) to pLoF variants annotated by the Variant Effect Predictor (Extended Data Fig. 5a). Despite not using frequency information, we find that this method disproportionately removes pLoF variants that are common in the population, which are known to be enriched for annotation errors<sup>3</sup>, while retaining rare, likely deleterious variation, as well as reported pathogenic variation (Fig. 2a). LOFTEE distinguishes high-confidence pLoF variants from annotation artifacts, and identifies a set of putative splice variants outside the essential splice site. LOFTEE's filtering strategy is conservative in the interest of increasing specificity, filtering some potentially functional variants that display a frequency spectrum consistent with that of missense variation (Fig. 2b). Applying LOFTEE v1.0, we discover 443,769 high-confidence pLoF variants, of which 413,097 fall on the canonical transcripts of 16,694 genes.



**Figure 2 | Generating a high-confidence set of predicted loss-of-function (pLoF) variants.**

**a**, The percent of variants filtered by LOFTEE grouped by ClinVar status and gnomAD frequency. Despite not using frequency information, LOFTEE removes a larger proportion of common variants, and a very low proportion of reported disease-causing variation. **b**, MAPS (see Fig. 1c-d) is shown by LOFTEE designation and filter. Variants filtered out by LOFTEE exhibit frequency spectra similar to those of missense variants, predicted splice variants outside the essential splice site are more rare, and high-confidence variants are very likely to be singletons. Only SNVs with at least 80% call rate are included here. **c**, **d**, The total number of pLoF variants (**c**), and proportion of genes with over 10 pLoF variants (**d**) observed and expected (in the absence of selection) as a function of sample size (downsampled from gnomAD). Selection reduces the number of variants observed, and variant discovery approximately follows a square-root relationship with number of samples. At current sample sizes, we would expect to identify more than 10 pLoF variants for 72.1% of genes in the absence of selection.

Aggregating across variants, we created a gene-level pLoF frequency metric to estimate the proportion of haplotypes harboring an inactive copy of each gene: we find that 1,555 genes have an aggregate pLoF frequency of at least 0.1% (Extended Data Fig. 5c), and 3,270 genes with an aggregate pLoF frequency of at least 0.1% in any one population. Further, we characterized the landscape of genic tolerance to homozygous inactivation, identifying 4,332

pLoF variants that are homozygous in at least one individual. Given the rarity of true homozygous LoF variants, we expected substantial enrichment of such variants for sequencing and annotation errors, and we subjected this set to additional filtering and deep manual curation before defining a set of 1,649 genes (2,363 high-confidence variants) that are likely tolerant to biallelic inactivation.

## Classifying the LoF intolerance of human genes

Just as a preponderance of pLoF variants is useful for identifying LoF-tolerant genes, we can conversely characterize a gene's intolerance to inactivation by identifying significant depletions of predicted LoF variation<sup>4,7</sup>. Here, we present a refined mutational model, which incorporates methylation, base-level coverage correction, and LOFTEE (Supplementary Information, Extended Data Fig. 6), in order to predict expected levels of variation under neutrality. Under this updated model, the variation in the number of synonymous variants observed is accurately captured ( $r = 0.979$ ). We then applied this method to detect depletion of pLoF variation by comparing the number of observed pLoF variants against our expectation in the gnomAD exome data from 125,748 individuals, more than doubling the sample size of ExAC, the previously largest exome collection<sup>4</sup>. For this dataset, we computed a median of 17.9 expected pLoF variants per gene (Fig. 2c) and found that 72.1% of genes have over 10 pLoF variants (powered to be classified into the most constrained genes; see Supplementary Information) expected on the canonical transcript (Fig. 2d), an increase from 13.2 and 62.8%, respectively, in ExAC.

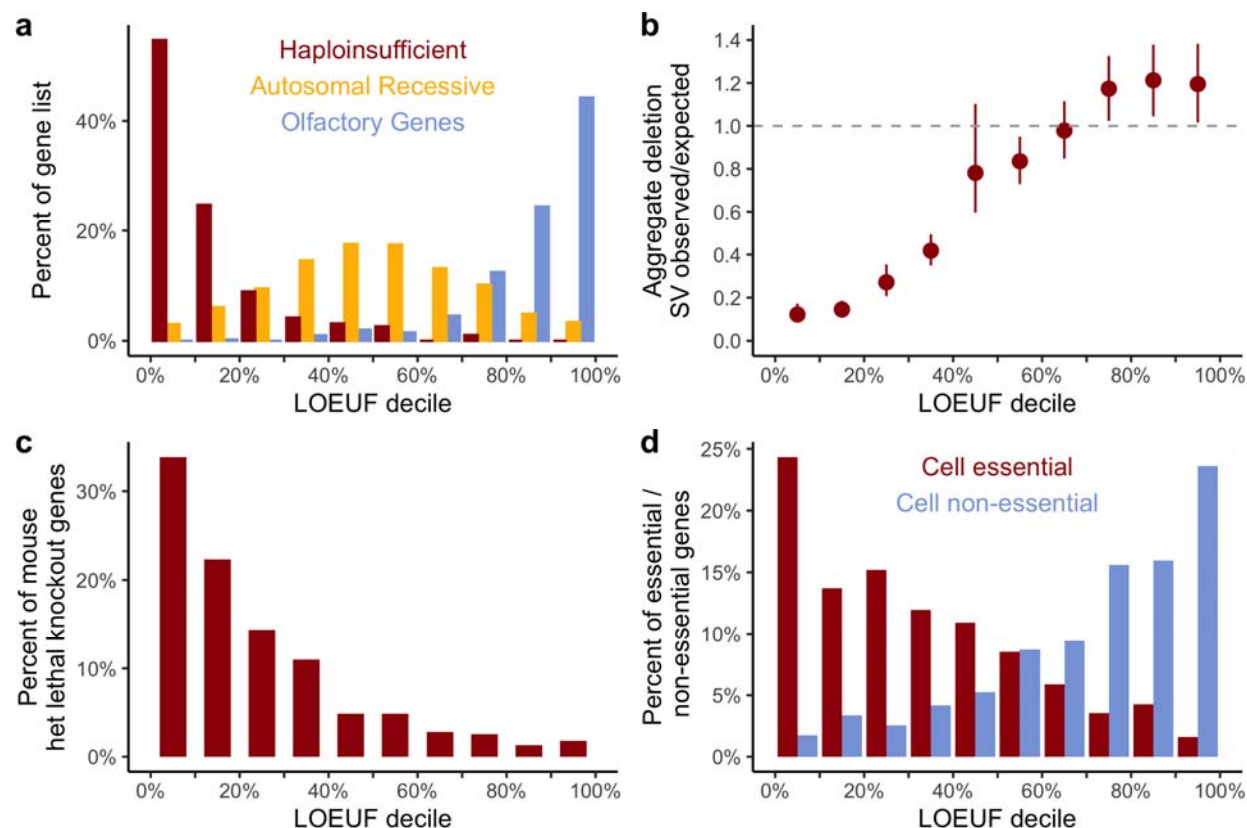
In ExAC, the smaller sample size required a transformation of the observed and expected values for the number of pLoF variants in each gene into the probability of loss-of-function intolerance (pLI): this metric estimates the probability that a gene falls into the class of LoF-haploinsufficient genes (approximately ~10% observed/expected variation) and is ideally used as a dichotomous metric (producing 3,230 genes with pLI > 0.9). Here, our refined model

and substantially increased sample size enabled us to directly assess the degree of intolerance to pLoF variation in each gene using the continuous metric of the observed/expected (o/e) ratio and to estimate a confidence interval around the ratio. We find that the median o/e is 48%, indicating that, as noted previously, most genes exhibit at least moderate selection against pLoF variation (Extended Data Fig. 7a). For downstream analyses, unless otherwise specified, we use the 90% upper bound of this confidence interval, which we term the loss-of-function observed/expected upper bound fraction (LOEUF; Extended Data Fig. 7b-c), binned into deciles of ~1,920 genes each. At current sample sizes, this metric enables the quantitative assessment of constraint with a built-in confidence value, distinguishing small genes (e.g. those with observed = 0, expected = 2; LOEUF = 1.34) from large genes (e.g. observed = 0, expected = 100; LOEUF = 0.03), while retaining the continuous properties of the direct estimate of the ratio (see Supplementary Information). At one extreme of the distribution, we observe genes with a very strong depletion of pLoF variation (first LOEUF decile aggregate o/e = ~6%, Extended Data Fig. 7d) including genes previously characterized as high pLI (Extended Data Fig. 7e). On the other, we find unconstrained genes that are relatively tolerant of inactivation, including many that harbor homozygous pLoF variants (Extended Data Fig. 7f).

## Validation of LoF intolerance score

The LOEUF metric allows us to place each gene along a continuous spectrum of tolerance to inactivation. We examined the correlation of this metric with a number of independent measures of genic sensitivity to disruption. First, we found that LOEUF is consistent with the expected behavior of well-established gene sets: known haploinsufficient genes are strongly depleted of pLoF variation, while olfactory receptors are relatively unconstrained, and genes with a known autosomal recessive mechanism, for which selection against heterozygous disruptive variants tends to be present but weak<sup>9</sup>, fall in the middle of the distribution (Fig. 3a). Additionally, LOEUF is positively correlated with the occurrence of 6,735

rare autosomal deletion structural variants overlapping protein-coding exons identified in a subset of 6,749 individuals with whole genome sequencing data in this manuscript<sup>11</sup> (Fig. 3b;  $r = 0.13$ ;  $p = 9.8 \times 10^{-68}$ ).



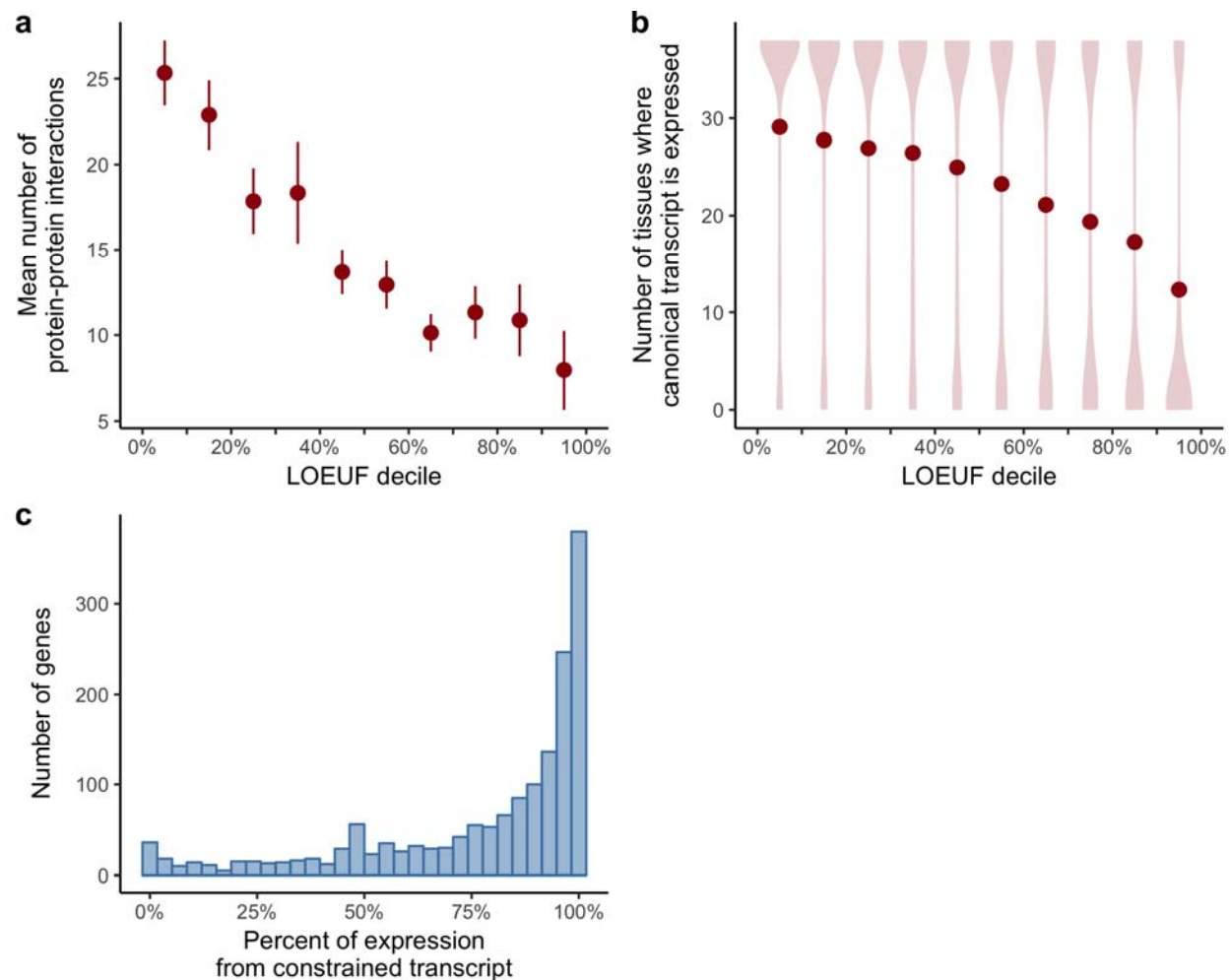
**Figure 3 | The functional spectrum of pLoF impact.** **a**, The percentage of genes in a set of curated gene lists represented in each LOEUF decile. Haploinsufficient genes are enriched among the most constrained genes, while recessive genes are spread in the middle of the distribution, and olfactory receptors are largely unconstrained. **b**, The occurrence of rare LoF deletion structural variants (SVs) is correlated with LOEUF (computed from SNVs;  $r = 0.13$ ;  $p = 9.8 \times 10^{-68}$ ). Error bars represent 95% confidence intervals from bootstrapping. **c**, **d**, Constrained genes are more likely to be lethal when heterozygously inactivated in mouse (**c**) and cause cellular lethality when disrupted in human cells, while unconstrained genes are more likely to be tolerant of disruption in cellular models (**d**). For all panels, more constrained genes are shown on the left.

This constraint metric also correlates with results in model systems: in 390 genes with orthologs that are embryonically lethal upon heterozygous deletion in mouse<sup>22,23</sup>, we find a lower LOEUF score (mean = 0.488), compared to the remaining 19,314 genes (mean = 0.962;  $t$ -test  $p = 10^{-78}$ ; Fig. 3c). Similarly, the 678 genes that are essential for human cell viability as

characterized by CRISPR screens<sup>24</sup> are also depleted for pLoF variation (mean LOEUF = 0.63) in the general population compared to background (19,026 genes with mean LOEUF = 0.964; t-test  $p = 9 \times 10^{-71}$ ), while the 859 non-essential genes are more likely to be unconstrained (mean LOEUF = 1.34, compared to remaining 18,845 genes with mean LOEUF = 0.936; t-test  $p = 3 \times 10^{-92}$ ; Fig. 3d).

## Biological properties of genes and transcripts across the constraint spectrum

We investigated the properties of genes and transcripts as a function of their tolerance to pLoF variation (LOEUF). First, we found that LOEUF correlates with a gene's degree of connection in protein interaction networks ( $r = -0.14$ ;  $p = 1.7 \times 10^{-51}$  after adjusting for gene length, Fig. 4a) and functional characterization (Extended Data Fig. 8a). Additionally, constrained genes are more likely to be ubiquitously expressed across 38 tissues in GTEx (Fig. 4b; LOEUF  $r = -0.31$ ;  $p < 1 \times 10^{-100}$ ) and have higher expression on average (LOEUF  $\rho = -0.28$ ;  $p < 1 \times 10^{-100}$ ), consistent with previous results<sup>4</sup>. While most results in this study are reported at the gene level, we have also extended our framework to compute LOEUF for all protein-coding transcripts, allowing us to explore the extent of differential constraint of transcripts within a given gene. In cases where a gene contained transcripts with varying levels of constraint, we found that transcripts in the first LOEUF decile were more likely to be expressed across tissues than others in the same gene ( $n = 1,740$  genes), even when adjusted for transcript length (Fig. 4c; constrained transcripts are on average 6.34 TPM higher;  $p = 2.2 \times 10^{-14}$ ). Additionally, we found that the most constrained transcript for each gene was typically the most highly expressed transcript in tissues with disease relevance<sup>25</sup> (Extended Data Fig. 8c), supporting the need for transcript-based variant interpretation, as explored in more depth in an accompanying manuscript<sup>15</sup>.



**Figure 4 | Biological properties of constrained genes and transcripts.** **a**, The mean number of protein-protein interactions is plotted as a function of LOEUF decile: more constrained genes have more interaction partners (LOEUF  $r = -0.14$ ;  $p = 1.7 \times 10^{-51}$ ). Error bars correspond to 95% confidence intervals. **b**, The number of tissues where a gene is expressed (TPM > 0.3), binned by LOEUF decile, is shown as a violin plot with the mean number overlaid as points: more constrained genes are more likely to be expressed in multiple tissues (LOEUF  $r = -0.31$ ;  $p < 1 \times 10^{-100}$ ). **c**, For 1,740 genes where there exists at least one constrained and one unconstrained transcript, the proportion of expression derived from the constrained transcript is plotted as a histogram.

Finally, we investigated potential differences in LOEUF across human populations, restricting to the same sample size across all populations in order to remove bias due to differential power for variant discovery. As the smallest population in our exome dataset (African/African-American) has only 8,128 individuals, our ability to detect constraint against pLoF variants for individual genes is limited. However, for well-powered genes (expected pLoF



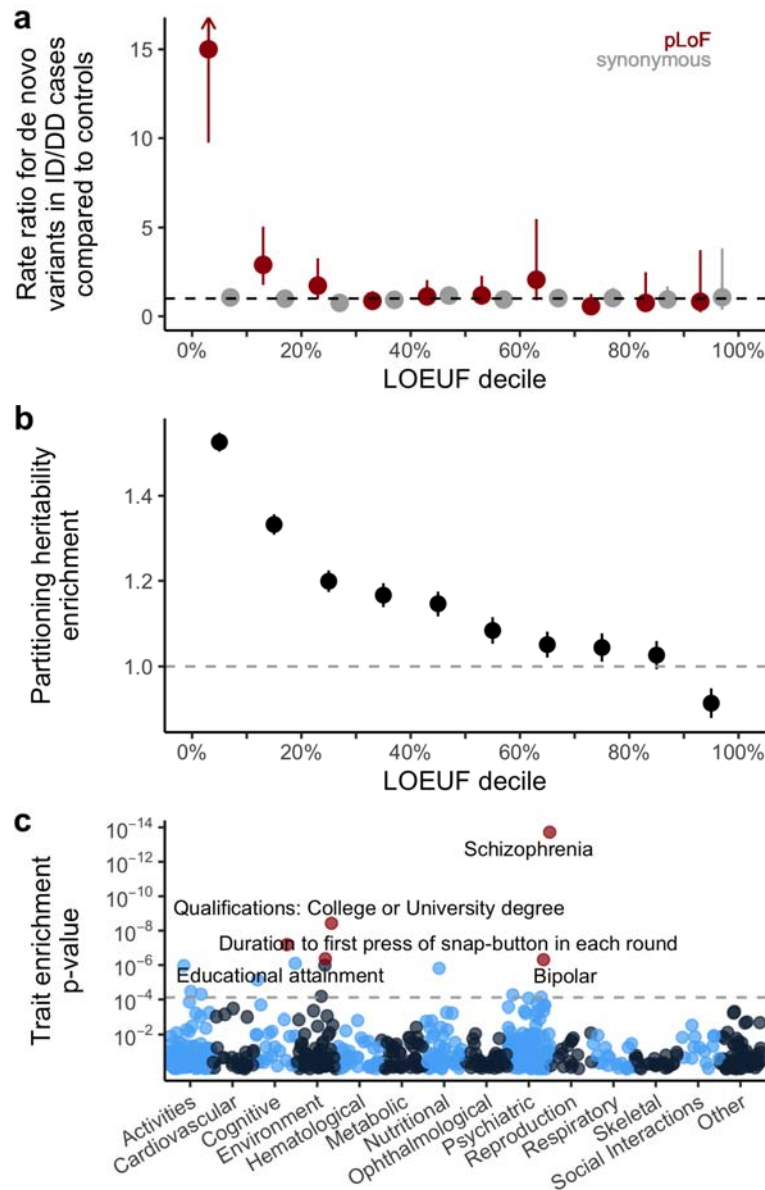
$\geq 10$ , see Supplementary Information), we observed a lower mean o/e ratio and LOEUF across genes among African/African-American individuals, a population with a larger effective population size, compared to other populations (Extended Data Fig. 8d,e), consistent with the increased efficiency of selection in populations with larger effective population sizes<sup>26,27</sup>.

## Constraint informs disease etiologies

The LOEUF metric can be applied to improve molecular diagnosis and advance our understanding of disease mechanisms. Disease-associated genes, discovered by different technologies over the course of many years across all categories of inheritance and effects, span the entire spectrum of LoF tolerance (Extended Data Fig. 9a). However, in recent years, high-throughput sequencing technologies have enabled identification of highly deleterious variants that are *de novo* or only inherited in small families/trios, leading to the discovery of novel disease genes under extreme constraint against pLoF variation that could not have been identified by linkage approaches that rely on broadly inherited variation (Extended Data Fig. 9b). This result is consistent with a recent analysis which shows a post-WES/WGS era enrichment for gene-disease relationships attributable to *de novo* variants [Bamshad et al., 2019; in press].

Rare variants, which are more likely to be deleterious, are expected to exhibit stronger effects on average in constrained genes (previously shown using pLI from ExAC<sup>28</sup>), with an effect size related to the severity and reproductive fitness of the phenotype. In an independent cohort of 5,305 patients with intellectual disability / developmental disorders and 2,179 controls, the rate of pLoF *de novo* variation in cases is 15-fold higher in genes belonging to the most constrained LOEUF decile, compared to controls (Fig. 5a) with a slightly increased rate (2.9-fold) in the second highest decile but not in others. A similar, but attenuated enrichment (4.4-fold in the most constrained decile) is seen for *de novo* variants in 6,430 patients with autism spectrum disorder (Extended Data Fig. 9c). Further, in burden tests of rare variants (allele count across both cases and controls = 1) of patients with schizophrenia<sup>28</sup>, we find a significantly

higher odds ratio in constrained genes (Extended Data Fig. 9d).



**Figure 5 | Disease applications of constraint.** **a**, The rate ratio is defined by the rate of *de novo* variants (number per patient) in intellectual disability / developmental delay (ID/DD) cases divided by the rate in controls. pLoF variants in the most constrained decile of the genome are approximately 11-fold more likely to be found in cases compared to controls. **b**, Marginal enrichment in per-SNV heritability explained by common (MAF > 5%) variants within 100 kb of genes in each LOEUF decile, estimated by LD Score regression. Enrichment is compared to the average SNV genome-wide. The results reported here are from random effects meta-analysis of 276 independent traits (subsetting from the 658 traits with UK Biobank or large-scale consortium GWAS results). **c**, Conditional enrichment in per-SNV common variant heritability tested using LD score regression in each of 658 common disease and trait GWAS results. P-values evaluate whether per-SNV heritability scales proportional to the LOEUF of the nearest gene, conditional on 75 existing functional, linkage disequilibrium, and MAF-related genomic annotations. Colors

alternate by broad phenotype category.

Finally, although pLoF variants are predominantly rare, other more common variation in constrained genes may also be deleterious, including the effects of other coding or regulatory variants. In a heritability partitioning analysis of association results for 658 traits in the UK Biobank and other large-scale GWAS efforts, we find an enrichment of common variant associations near genes that is linearly related to LOEUF decile across numerous traits (Fig. 5b). Schizophrenia and educational attainment are the most enriched traits (Fig. 5c), consistent with previous observations in associations between rare pLoF variants and these phenotypes<sup>29,30</sup>. This enrichment persists even when accounting for gene size, expression in GTEx brain samples, and previously tested annotations of functional regions and evolutionary conservation, and suggests that some heritable polygenic diseases and traits, particularly cognitive/psychiatric ones, have an underlying genetic architecture driven substantially by constrained genes (Extended Data Fig. 10).

## Discussion

In this paper and accompanying publications, we present the largest catalogue of harmonized variant data from any species to date, incorporating exome or genome sequence data from over 140,000 humans. The gnomAD dataset of over 270 million variants is publicly available (<https://gnomad.broadinstitute.org>), and has already been widely used as a resource for allele frequency estimates in the context of rare disease diagnosis (for a recent review, see Eilbeck *et al.*<sup>31</sup>), improving power for disease gene discovery<sup>32-34</sup>, estimating genetic disease frequencies<sup>35,36</sup>, and exploring the biological impact of genetic variation<sup>37,38</sup>. In this manuscript, we describe the application of this dataset to calculate a continuous metric describing a spectrum of tolerance to pLoF variation for each protein-coding gene in the human genome. We validate this method using known gene sets and model organism data, and explore the value of

this metric for investigating human gene function and disease gene discovery.

We have focused on high-confidence, high-impact pLoF variants, calibrating our analysis to be highly specific to compensate for the increased false-positive rate among deleterious variants. However, some additional error modes may still exist, and indeed, several recent experiments have proposed uncharacterized NMD-escape mechanisms<sup>39,40</sup>. Further, such a stringent approach will remove some true positives. For example, terminal truncations that are removed by LOFTEE may still exert a LoF mechanism through the removal of critical C-terminal domains, despite the gene's escape from nonsense mediated decay. Additionally, current annotation tools are incapable of detecting all classes of LoF variation and typically miss, for instance, missense variants that inactivate specific gene functions, as well as high-impact variants regulatory regions. Future work will benefit from the increasing availability of high-throughput experimental assays that can assess the functional impact of all possible coding variants in a target gene<sup>41</sup>, although scaling these experimental assays to all protein-coding genes represents an enormous challenge. Identifying constraint in individual regulatory elements outside coding regions will be even more challenging, and require much larger sample sizes of whole genomes as well as improved functional annotation<sup>42</sup>. We discuss one class of high-impact regulatory variants in a companion manuscript<sup>17</sup>, but many remain to be fully characterized.

While the gnomAD dataset is of unprecedented scale, it has important limitations. At this sample size, we remain far from saturating all possible pLoF variants in the human exome; even at the most mutable sites in the genome (methylated CpG dinucleotides) we observe only half of all possible stop-gained variants. A substantial fraction of the remaining variants are likely to be heterozygous lethal, while others will exhibit an intermediate selection coefficient; much larger sample sizes (in the millions to hundreds of millions of individuals) will be required for comprehensive characterization of selection against all individual LoF variants in the human genome. Such future studies would also benefit substantially from increased ancestral diversity

beyond the European-centric sampling of many current studies, which would provide opportunities to observe very rare and population-specific variation, as well as increase power to explore population differences in gene constraint. In particular, current reference databases including gnomAD have a near-complete absence of representation from the Middle East, central and southeast Asia, Oceania, and the vast majority of the African continent<sup>43</sup>, that must be addressed if we are to fully understand the distribution and impact of human genetic variation.

It is also important to understand the practical and evolutionary interpretation of pLoF constraint. In particular, it should be noted that these metrics primarily identify genes undergoing selection against heterozygous variation, rather than strong constraint against homozygous variation<sup>44</sup>. In addition, the power of the LOEUF metric is affected by gene length, with ~30% of the coding genes in the genome still insufficiently powered for detection of constraint even at the scale of gnomAD (Fig. 2d). Substantially larger sample sizes and careful analysis of individuals enriched for homozygous pLoFs (see below) will be useful for distinguishing these possibilities. Further, selection is largely blind to phenotypes emerging after reproductive age, and thus genes with phenotypes that manifest later in life, even if severe or fatal, may exhibit much weaker intolerance to inactivation. Despite these caveats, our results demonstrate that pLoF constraint segments protein-coding genes in a way that correlates usefully with their probability of disease impact and other biological properties, confirming the value of constraint in prioritizing candidate genes in studies of both rare and common disease.

Examples such as *PCSK9* demonstrate the value of human pLoF variants for identifying and validating targets for therapeutic intervention across a wide range of human diseases. As we discuss in more detail in an accompanying manuscript<sup>12</sup>, careful attention must be paid to a variety of complicating factors when using pLoF constraint to assess candidates. More valuable information comes from directly exploring the phenotypic impact of LoF variants on carrier humans, both through “forward genetics” approaches such as Mendelian disease gene

mapping, as well as “reverse genetics” approaches leveraging large collections of sequenced humans to find and clinically characterize individuals with disruptive mutations in specific genes. While clinical data are currently available for only a small subset of gnomAD individuals, future efforts integrating sequencing and deep phenotyping of large biobanks will provide valuable insight into the biological implications of partial disruption of specific genes. This is illustrated in a companion manuscript exploring the clinical correlates of heterozygous pLoF variants in the *LRRK2* gene, demonstrating that life-long partial inactivation of this gene is likely to be safe in humans<sup>13</sup>.

Such examples, and the sheer scale of pLoF discovery in this dataset, suggest the near-future feasibility and considerable value of a “human knockout project” - a systematic attempt to discover the phenotypic consequences of functionally disruptive mutations, in either the heterozygous or homozygous state, for all human protein-coding genes. Such an approach will require cohorts of millions of sequenced and deeply, consistently phenotyped individuals and, for the discovery of “complete knockouts”, would benefit substantially from the targeted inclusion of large numbers of samples from populations that have either experienced strong demographic bottlenecks, or high levels of recent parental relatedness (consanguinity)<sup>12</sup>. Such a resource would allow the construction of a comprehensive map directly linking gene-disrupting variation to human biology.

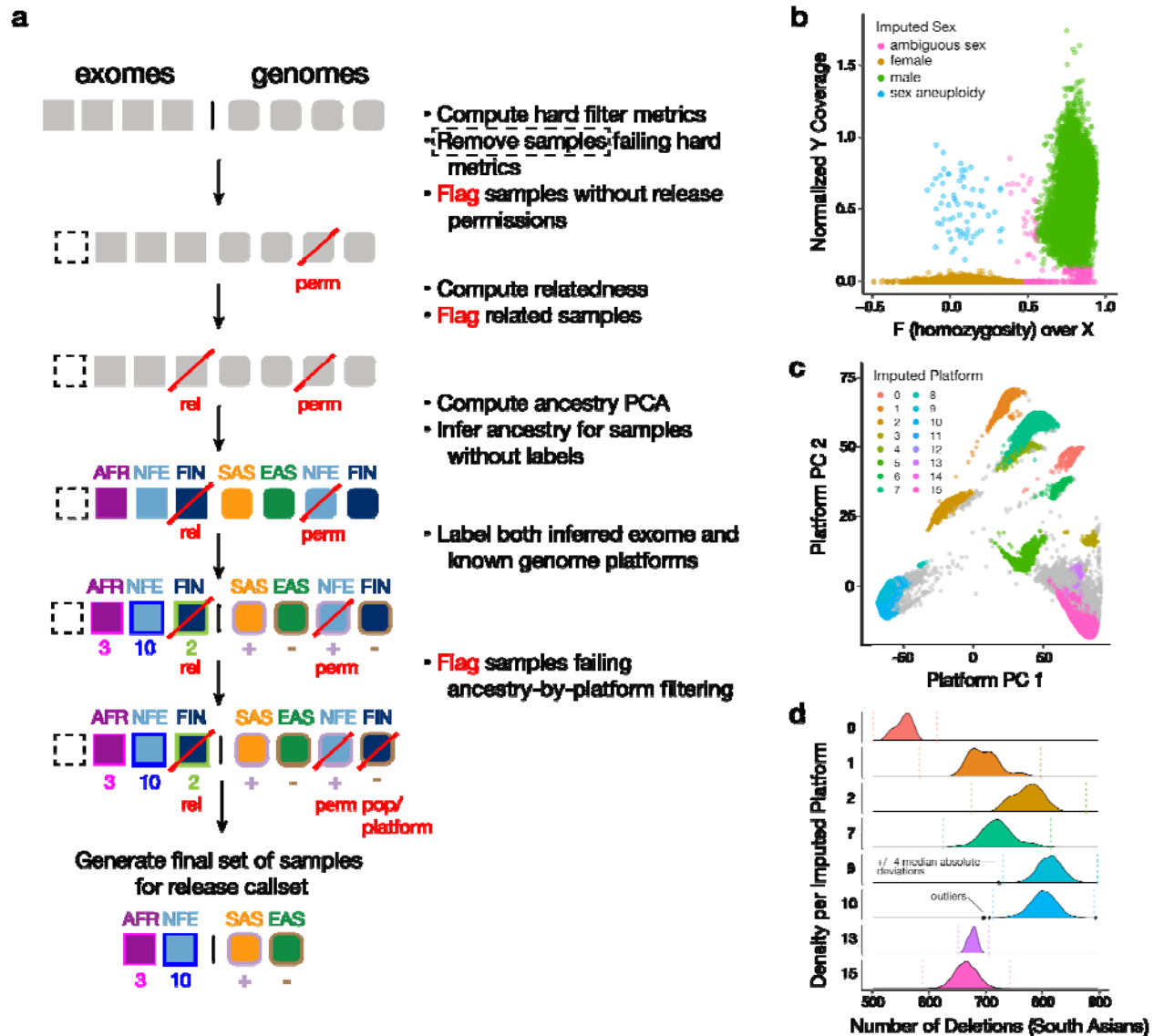
## Acknowledgments

We would like to thank the many individuals whose sequence data are aggregated in gnomAD for their contributions to research, and the users of gnomAD for their helpful and collaborative feedback. We would also like to thank David Altshuler for his important contributions to the development of the gnomAD resource, and Alicia Martin, Eric Fauman, Jon Bloom, Daniel King, and the Hail team for helpful discussions. The results published here are in part based upon data: 1) generated by The Cancer Genome Atlas managed by the NCI and

NHGRI (accession: [phs000178.v10.p8](#)). Information about TCGA can be found at <http://cancergenome.nih.gov>, 2) generated by the Genotype-Tissue Expression Project (GTEx) managed by the NIH Common Fund and NHGRI (accession: [phs000424.v7.p2](#)), 3) generated by the Exome Sequencing Project, managed by NHLBI, 4) generated by the Alzheimer's Disease Sequencing Project (ADSP), managed by the NIA and NHGRI (accession: [phs000572.v7.p4](#)). KJK was supported by NIGMS F32 GM115208. LCF was supported by the Swiss National Science Foundation (Advanced Postdoc.Mobility 177853). JXC was supported by NHGRI and NHLBI grants UM1 HG006493 and U24 HG008956. Analysis of the Genome Aggregation Database was funded by NIDDK U54 DK105566, NHGRI UM1 HG008900, BioMarin Pharmaceutical Inc., and Sanofi Genzyme Inc. Development of LOFTEE was funded by NIGMS R01 GM104371. The complete acknowledgments can be found in Supplementary Information. We have complied with all relevant ethical regulations.

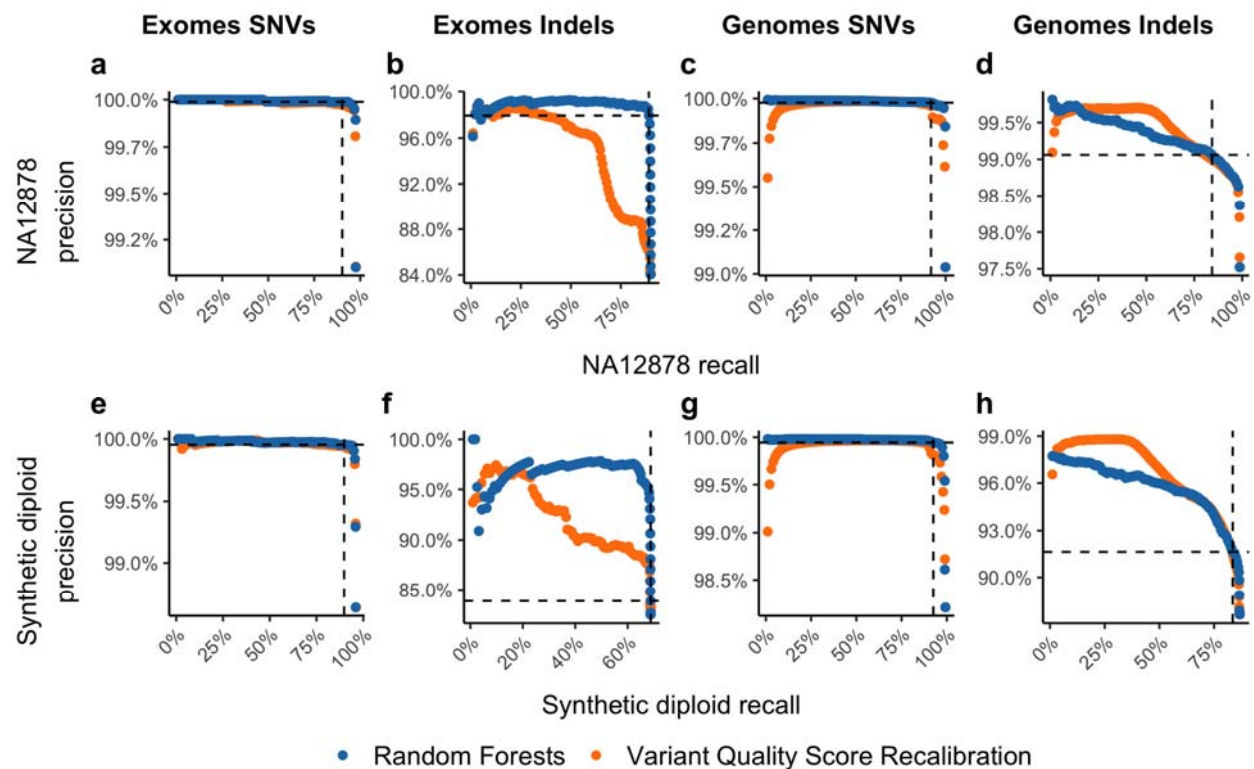


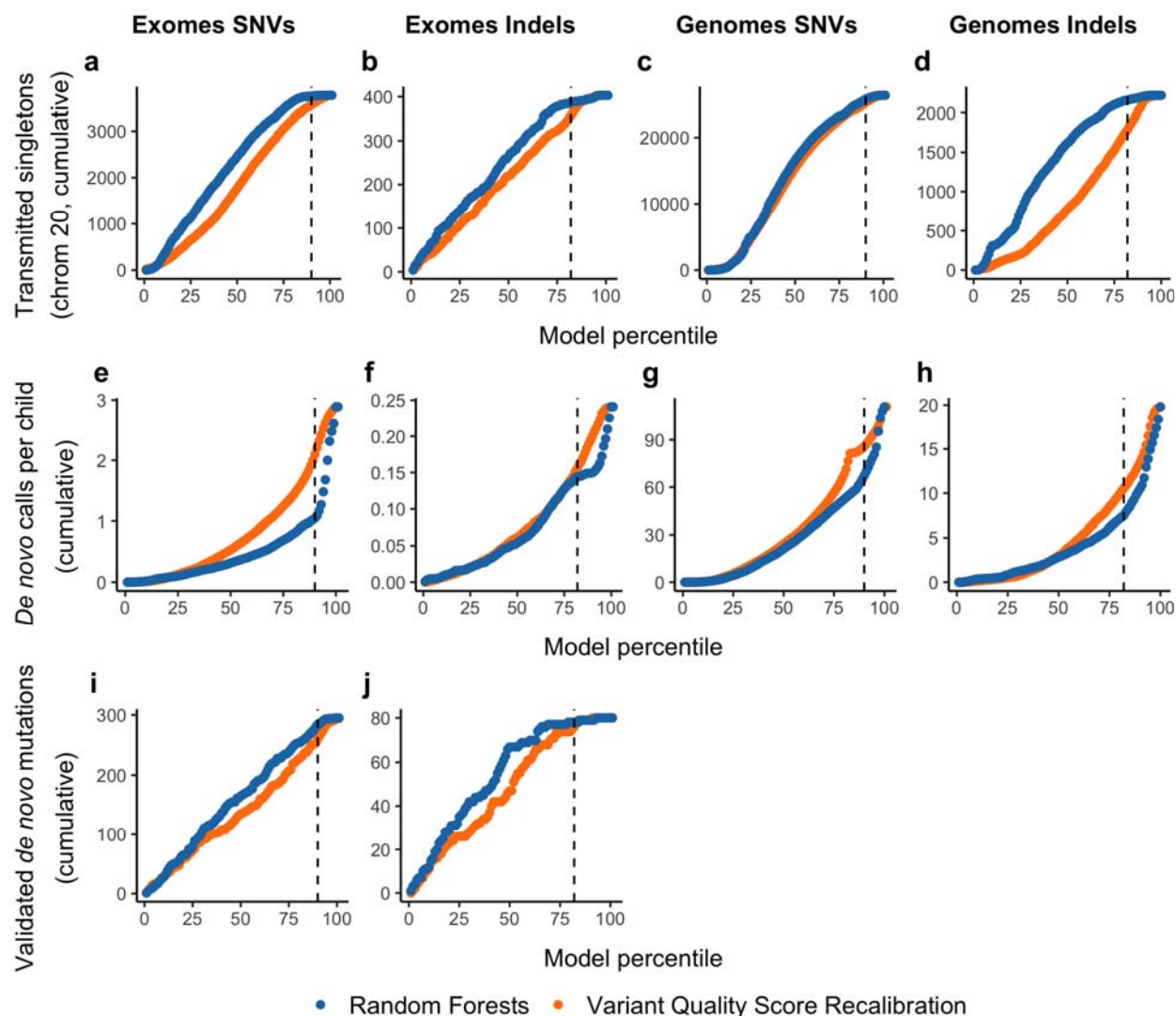
## Extended Data Figures



**Extended Data Figure 1 | Overview of the sample QC workflow.** **a**, Exome (square) and genome (rounded square) samples underwent quality control as described in detail in the Supplementary Information, both jointly (no vertical line) and separately (vertical line) in the following stages: hard filtering, relatedness inference, ancestry inference, platform inference (for exomes only), and population- and platform-specific outlier filtering. Except for samples failing hard filters (dotted outline), all quality control analyses were applied to all samples, regardless of the presence/absence of other QC flags (e.g., relatedness or lack of release permissions, red diagonal bar). Assignment of ancestry labels is represented by fill color and accompanying three-letter ancestry group abbreviation. Assignment of platform labels is represented by numbered label (corresponding to imputed platform for exomes) and known platform (including +/- PCR status for genomes). The final set of samples included in the gnomAD release (125,748 exomes and 15,708 genomes) was defined to be the set of unrelated samples with release permissions, no hard filter flags, and no population- and platform-specific outlier metrics. **b**, In exomes, the chromosomal sex of samples was inferred based on the inbreeding coefficient on

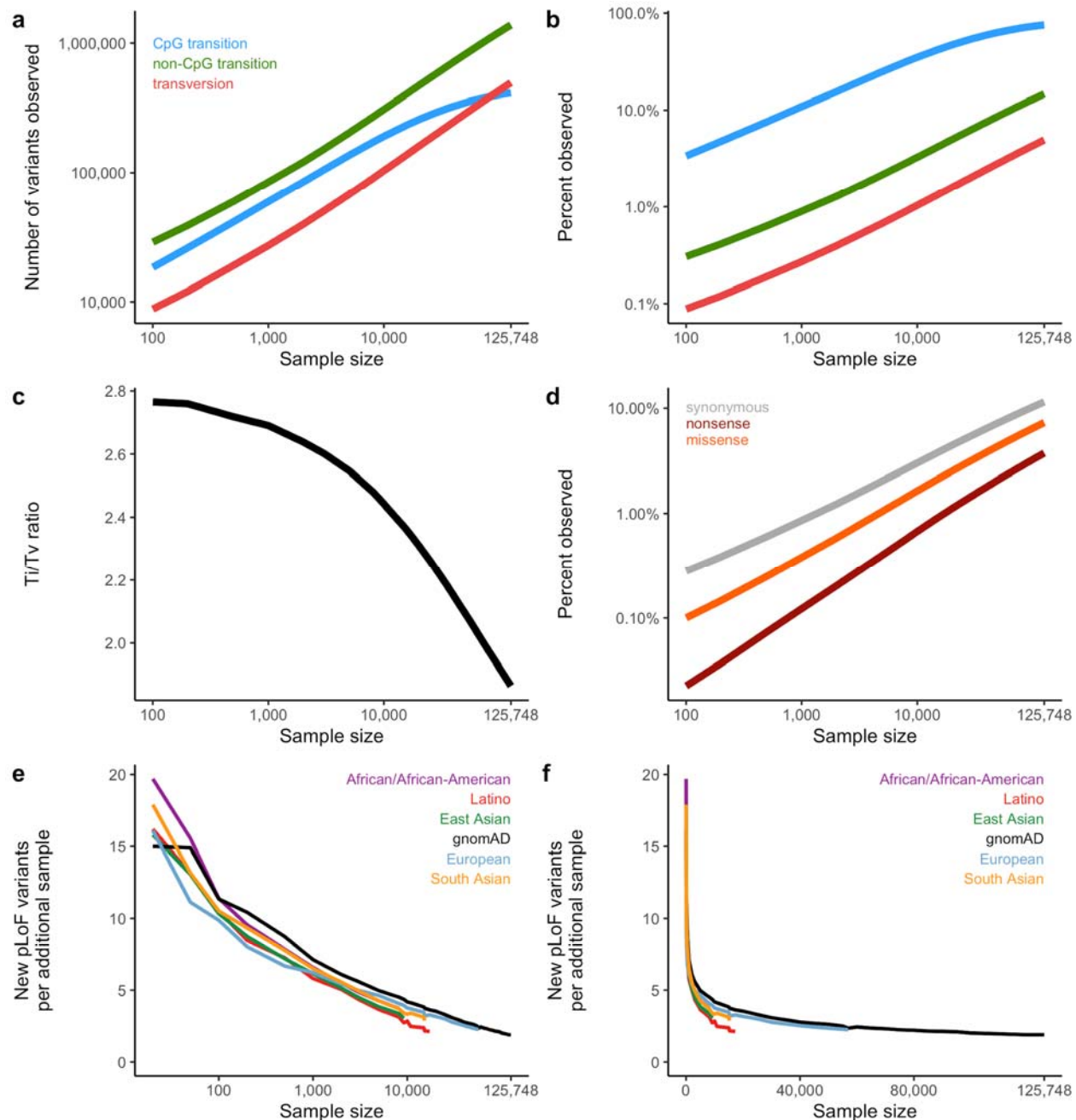
chromosome X and the coverage of chromosome Y into male (green), female (amber), ambiguous sex (pink), and sex chromosome aneuploid (blue). **c**, The top two principal components from PCA-HDBSCAN analysis of exome capture regions. Sequencing platforms were inferred for exome samples based on PCA analysis of biallelic variant call rates over all known exome capture regions, and samples were assigned a cluster label (0-15, or unknown) using HDBSCAN. **d**, We performed platform- and population-specific outlier filtering for a number of quality control metrics: here, we show the distribution of the number of deletions in South Asians across platforms. Distributions (and accordingly, median and median absolute deviations, MAD) for these metrics varied widely both by population and sequencing platform (numbered on y-axis). Outliers (black dots) were defined as samples with values outside four MAD (shown by dotted vertical lines) from the median of a given metric.



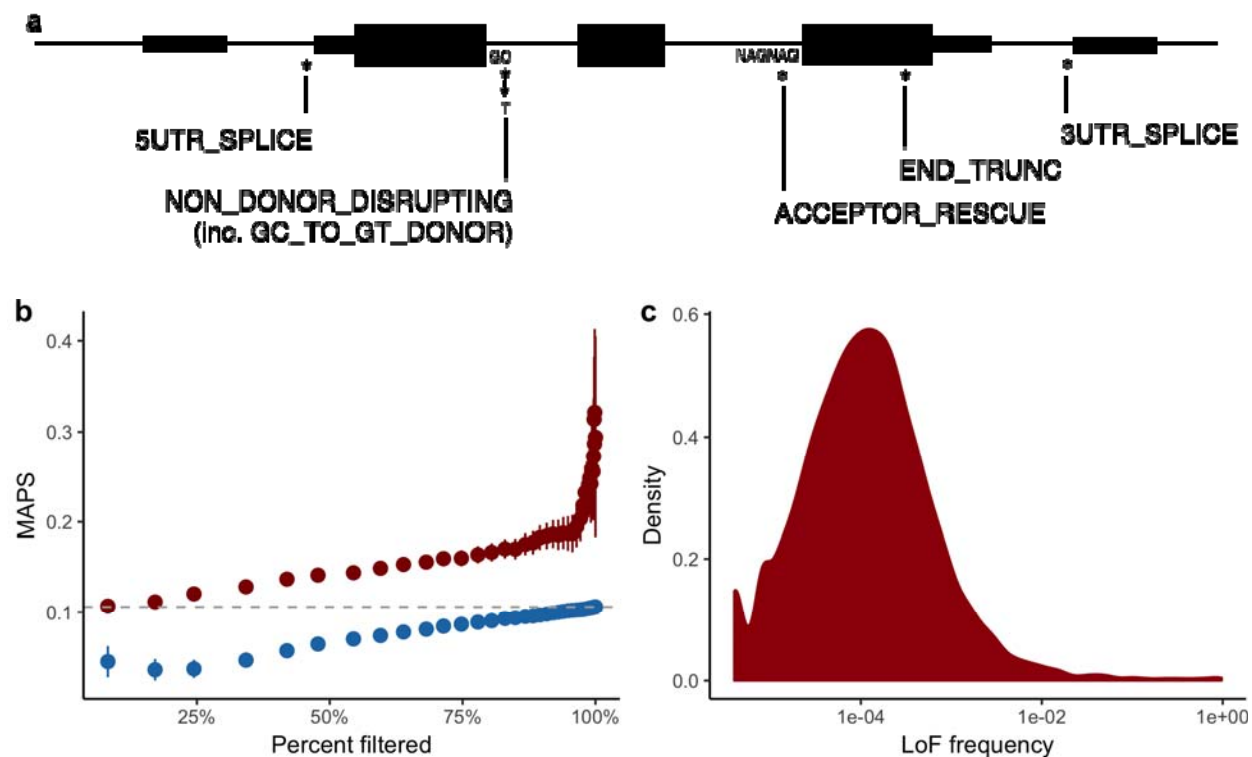


**Extended Data Figure 3 | Variant calling performance for rare variants.** For each of the curves in this figure, the x-axis shows the cumulative ranked percentile for our random forest (RF, blue) model and, as a comparison, for the current state-of-the-art GATK Variant Quality Score Recalibration (VQSR, orange). That is, the point at 10 shows the performance of the 10% best scored data, the point at 50, shows the performance 50% best-scored data, etc. **a-d**, The number of transmitted singletons (singletons in the unrelated individuals that are transmitted to an offspring) on chromosome 20 for exome SNVs (**a**) and indels (**b**), and genome SNVs (**c**) and indels (**d**). Chromosome 20 was not used for training our random forest model. We expect most of these to be real variants since we observe Mendelian transmission of an allele that was sequenced independently in a parent and child. **e-h**, The number of bi-allelic *de novo* calls per child (4,568 exomes, 212 genomes) outside of low-complexity regions. The expectation is that there is ~1.6 *de novo* SNV (**e**) and ~0.1 *de novo* indels per exome (**f**), and ~65 *de novo* SNVs (**g**) and ~5 *de novo* indels (**h**) per genome<sup>21</sup>. **i-j**, The number of independently validated *de novo* mutations, available for a subset of 331 exome samples for which *de novo* mutations were validated as part of other studies<sup>47</sup>. In all cases, at the thresholds chosen (dashed lines representing 10% and 20% of SNVs and indels filtered, respectively), RF outperforms or is similar to VQSR.





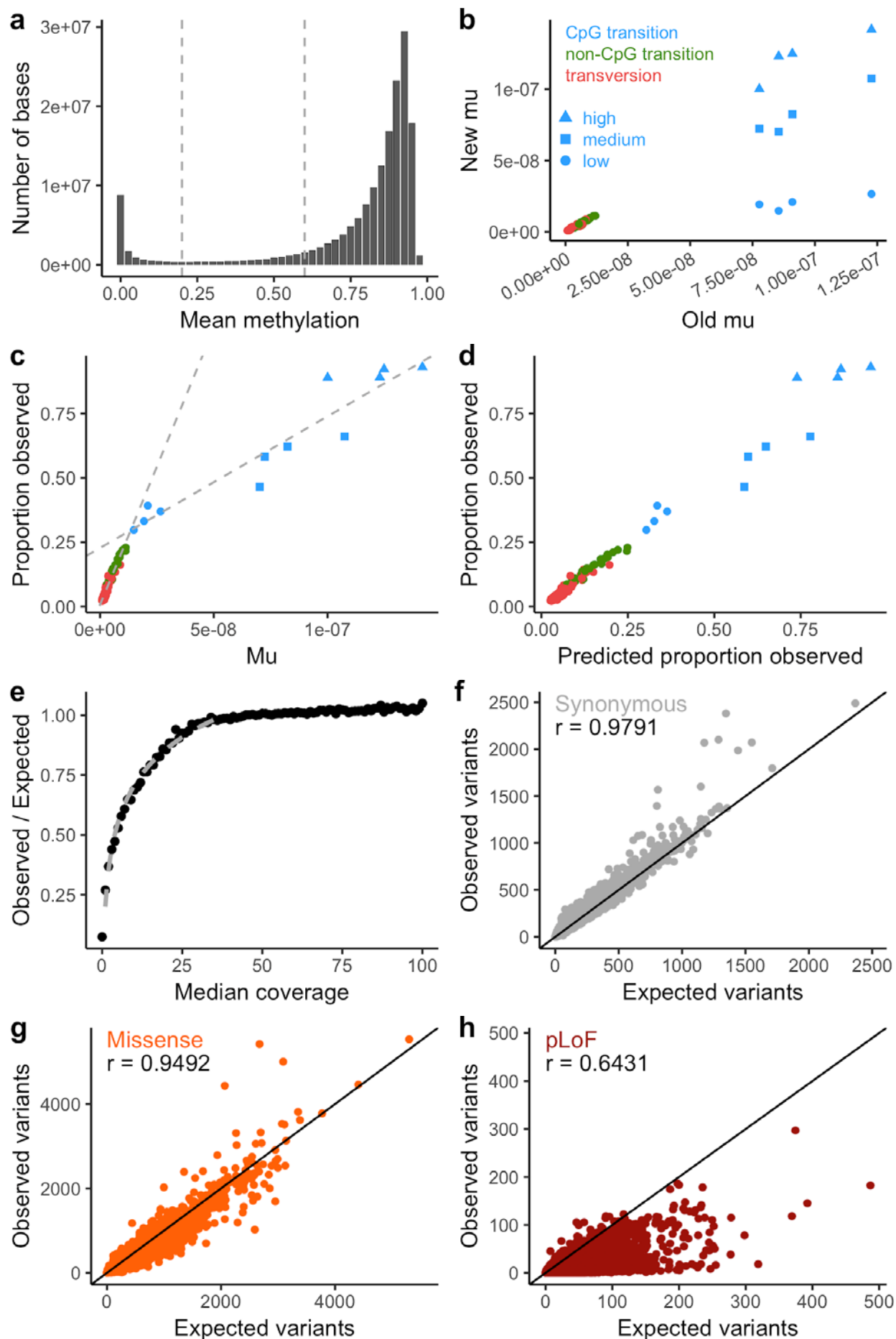
**Extended Data Figure 4 | Variant discovery at large sample sizes.** **a-b**, The total number of variants observed (**a**) and the proportion of possible variants observed (**b**) as a function of sample size, broken down by variant class. At large sample sizes, CpG transitions become saturated, as previously described<sup>4</sup>. Colours are consistent in **a-b**. **c**, This results in a decrease of the transition:transversion (Ti/Tv) ratio. **d**, When broken down by functional class, we observe the effects of selection, where synonymous variants have the highest proportion observed, followed by missense and pLoF variants. **e-f**, The number of additional pLoF variants introduced into the cohort as a function of sample size on a log (**e**) and linear (**f**) scale. Here, gnomAD (black) refers to a uniform sampling from the population distribution of the full cohort of exome sequenced individuals.



### Extended Data Figure 5 | Using LOFTEE to create a high confidence set of pLoF variation.

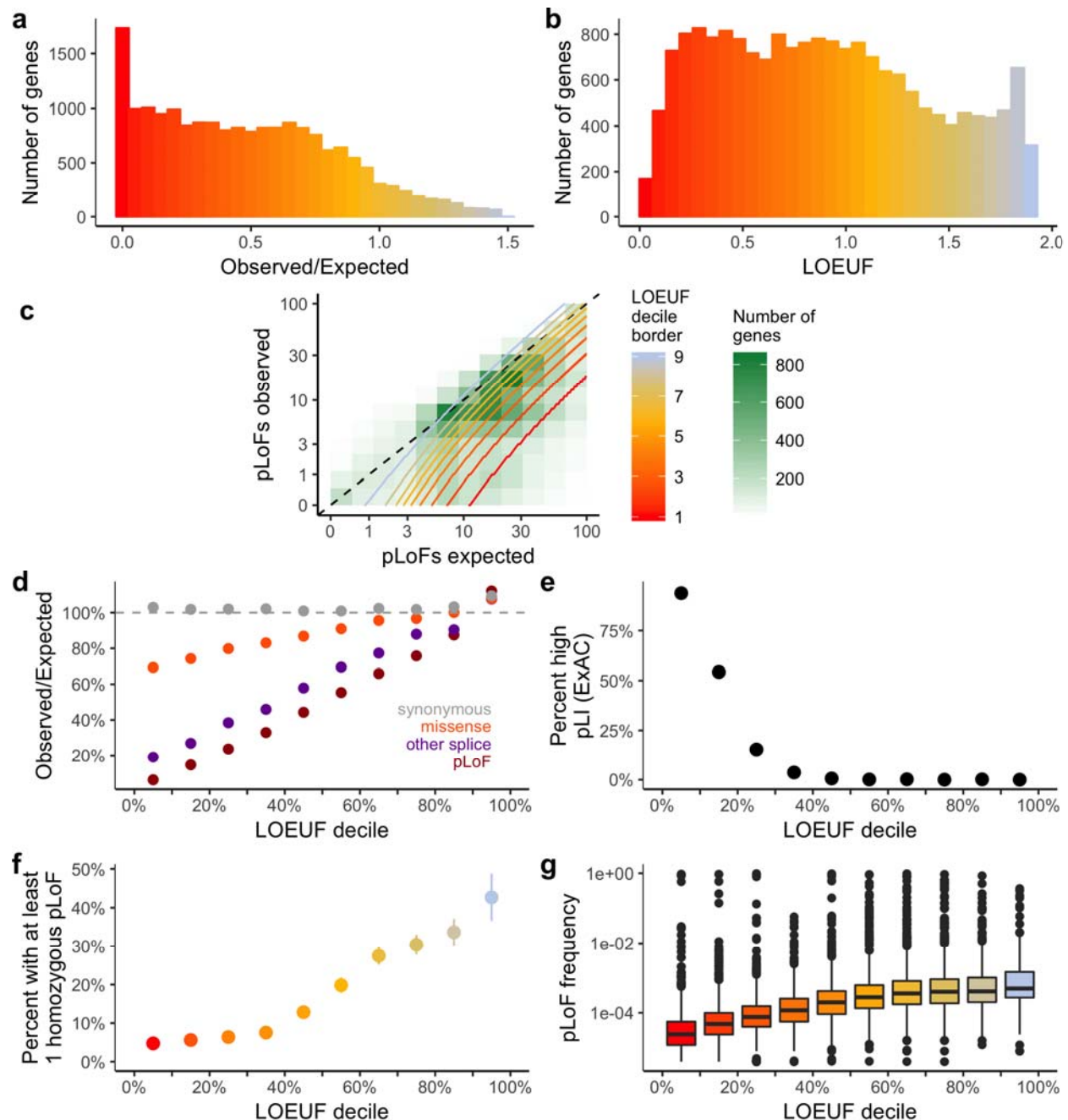
**a**, Schematic of LOFTEE filters. LOFTEE filters out putative stop-gained, essential splice, and frameshift variants based on sequence and transcript context, as well as flagging exonic features such as conservation (not shown). For instance, variants that are not predicted to disrupt splicing based on retention of a strong splice site, or rescue of a nearby splice site. Additional filters not shown include: ANC\_ALLELE (the alternate allele is the ancestral allele), NON\_ACCEPTOR\_DISRUPTING and DONOR\_RESCUE (opposite to those already shown). **b**, In order to tune the END\_TRUNC filter, we retained variants that pass the 50 base pair rule (are more than 50 bp before the 3'-most splice site). The overall MAPS score for variants that fail this rule is shown in gray. For the remaining variants, we computed the sum of the GERP score of bases deleted by the variant. At 40 bins of this score, we compute the MAPS score for those variants retained at this threshold (red) compared to variants removed at this threshold (blue), and plot this as a function of the proportion of variants filtered at this threshold. We chose the 50% point as it retains variants with a MAPS score of 0.14, while removing variants with a MAPS score of 0.06. **c**, Density plot of aggregate pLoF frequency computed from high-confidence pLoF variants discovered using LOFTEE.





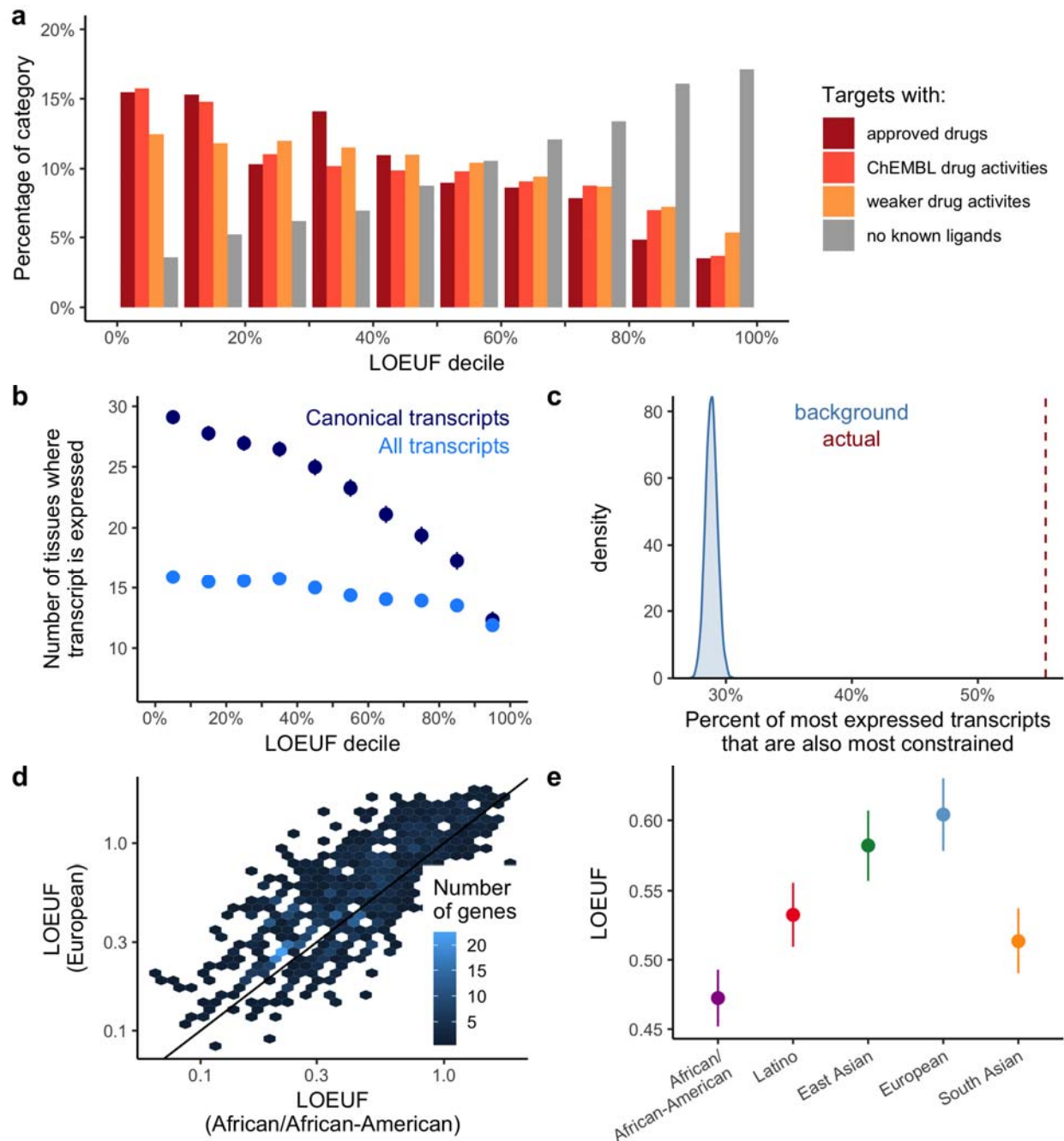
# Extended Data Figure 6 | Computing the depletion of variation of functional categories. **a**,

The distribution of mean methylation values across 37 tissues and across every CpG dinucleotide in the genome. We divided the genome into 3 levels (low methylation, missing or  $< 0.2$ ; medium,  $0.2-0.6$ ; and high,  $> 0.6$ ) and computed all ensuing metrics based on these categories. **b**, Comparison of estimates of the mutation rate with previous estimates<sup>48</sup>. For transversions and non-CpG transitions, we observe a strong correlation ( $r = 0.98$ ;  $p = 2.6 \times 10^{-65}$ ). For CpG transitions, the new estimates are calculated separately for the 3 levels of methylation and track with these levels. Colors and shapes are consistent in **b-d**. **c**, For panels (**c-e**), only synonymous variants are considered. The proportion of possible variants observed for each context is correlated with the mutation rate. We compute two fit lines, one for CpG transitions, and one for other contexts to calibrate our estimates. **d**, Calibration of each context to compute a predicted proportion observed after fitting the two models in (**c**), which is used to calculate an expected number of variants at high coverage. **e**, With an expectation computed from high coverage regions, the observed/expected ratio follows a logarithmic trend with the median coverage below 40X, which is used to correct low coverage bases in the final expectation model. **f-h**, For each transcript, the observed number of variants is plotted against the expected number from the model described above, for synonymous (**f**), missense (**g**), and pLoF (**h**) variants. Note that the expectation does not include selection, and so, pLoF and, to a lesser extent, missense variants exhibit lower observed values than expected.



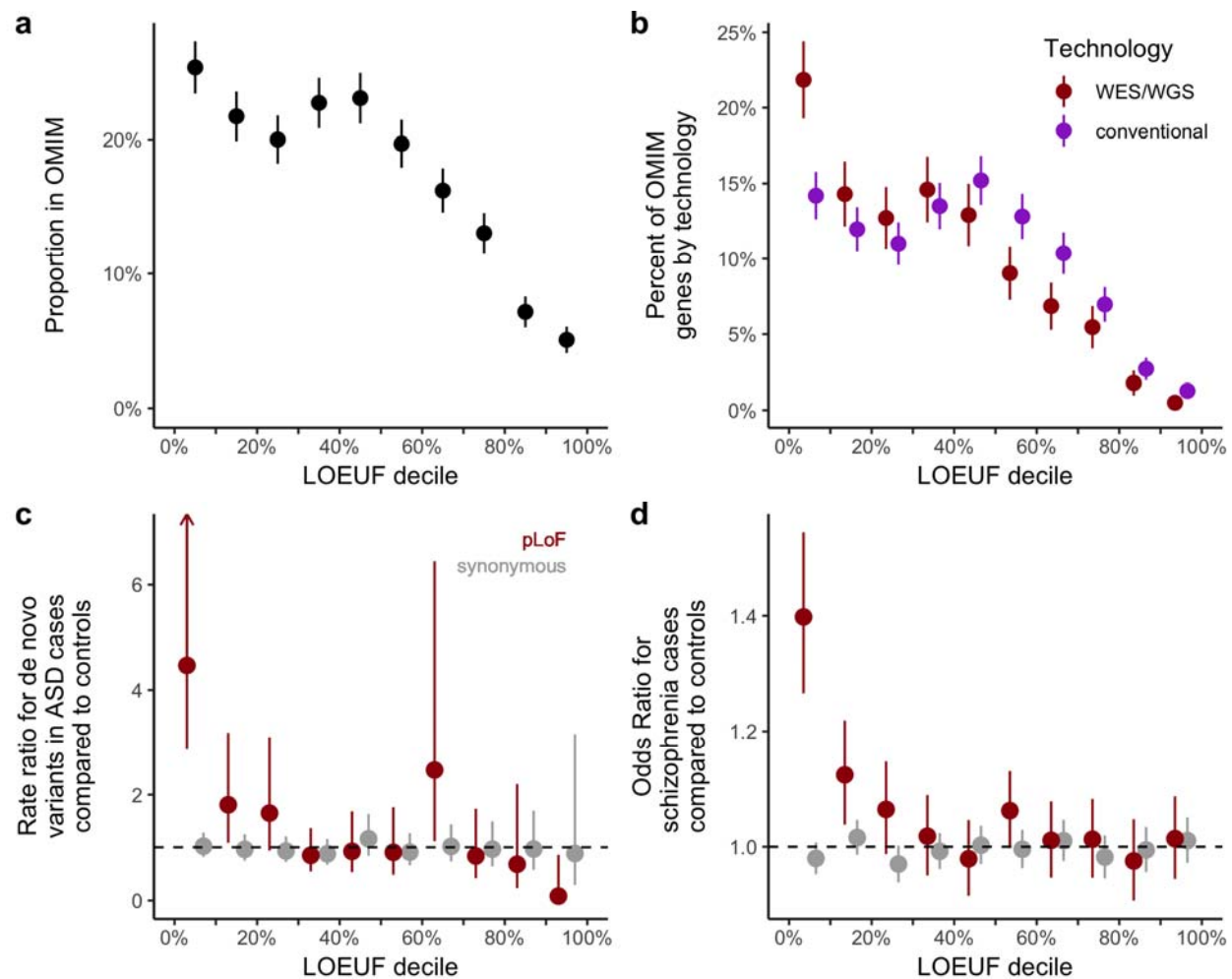
**Extended Data Figure 7 | Genomic properties of constrained genes.** **a-b**, Histogram of observed/expected ratio of pLoF variation (**a**) and LOEUF (**b**). Most genes have fewer observed variants than expected (median o/e = 0.48), and the genes with no observed pLoFs are distinguished between confidently constrained genes and noise by LOEUF. **c**, A 2-d density plot of the number of observed vs expected pLoF variants. The boundaries of each decile are plotted as gradients (the most constrained decile is below the lowest red line, etc.). **d**, Observed/expected ratios of various functional classes across genes within each LOEUF decile. The most constrained decile has approximately 6% of the expected pLoFs, while synonymous variants are not depleted and missense variants exhibit modest depletion. **e**, The percentage of each LOEUF decile that was described in ExAC as constrained, or pLI > 0.9<sup>4</sup>. **f**, The percentage

of each LOEUF decile that have at least one homozygous pLoF variant. **g**, Boxplots of the aggregate pLoF frequency for each LOEUF decile (center line, median; box limits, upper and lower quartiles; whiskers, 1.5x interquartile range; points, outliers). In d-f, error bars represent 95% confidence intervals (note that in some cases these are fully contained within the plotted point).



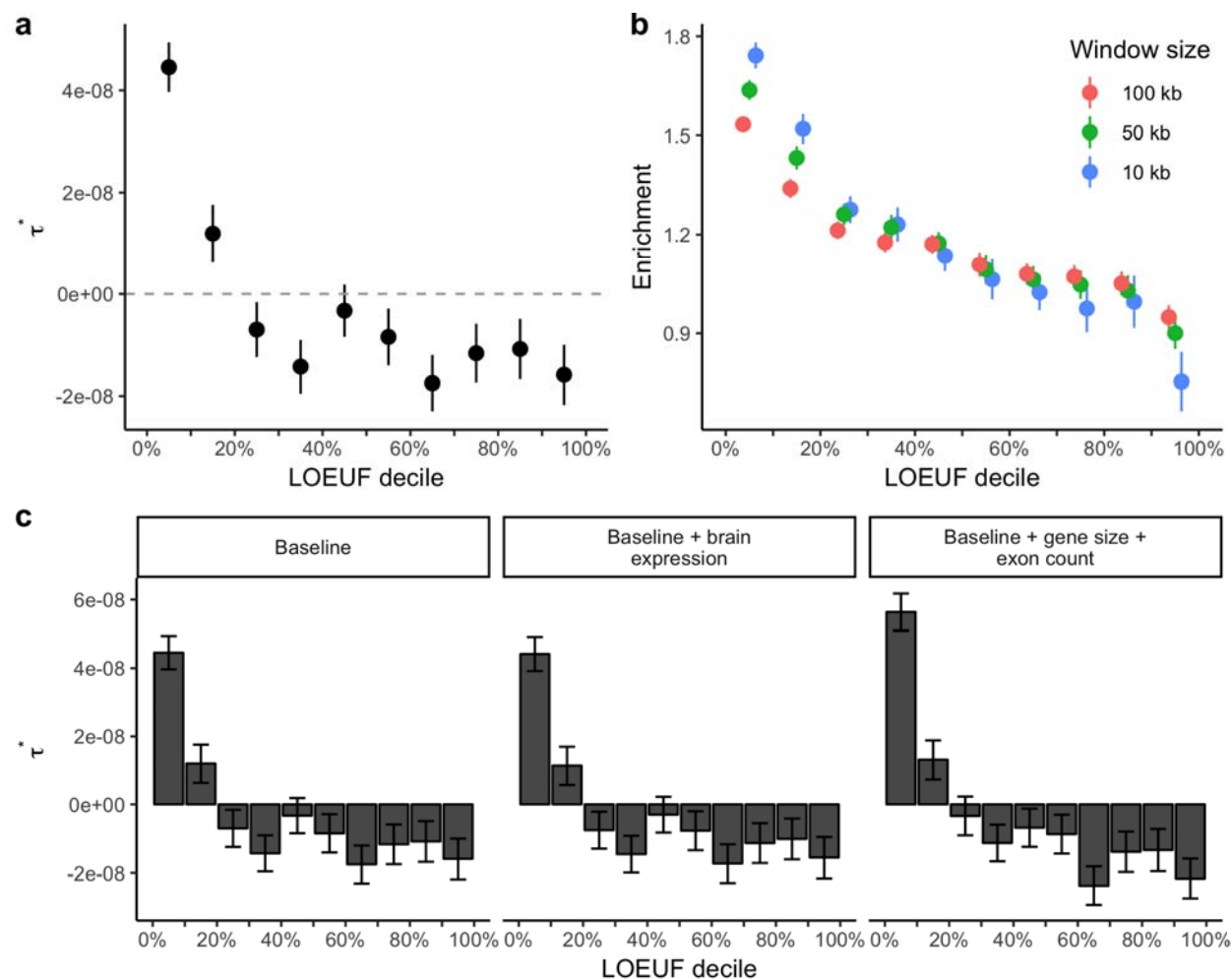
**Extended Data Figure 8 | Biological properties of constrained genes.** **a**, The percentage of genes in each functional category from Pharos (see Supplementary Information) is broken down by LOEUF decile. **b**, The mean number of tissues where a transcript is expressed, binned by transcript-based LOEUF decile, is shown for all transcripts and canonical transcripts. **c**, The percent of genes where the most expressed transcript is also the most constrained is plotted in red, which is enriched compared to a permuted set (blue). **d**, For 927 genes with expected pLoF  $\geq 10$  in both the African/African-American and European population subsets, the LOEUF scores are highly correlated ( $r = 0.78$ ,  $p < 10^{-100}$ ), with a lower mean score observed in the African/African-American population (0.49 vs 0.62; t-test  $p = 4.1 \times 10^{-14}$ ), which has a higher effective population size. **e**, The mean LOEUF score for 865 genes with expected pLoF  $\geq 10$  in

all populations. Error bars represent 95% confidence intervals.



**Extended Data Figure 9 | Applications of constraint metrics to rare variant analysis of disease.** **a**, Proportion of each LOEUF decile found in OMIM. **b**, Proportion of disease-associated genes discovered by whole exome/genome sequencing (WES/WGS) compared to conventional (typically linkage), plotted by LOEUF decile. The latter are more constrained (LOEUF 0.674 vs 0.806,  $p = 1.2 \times 10^{-16}$ ), suggesting the effectiveness of these techniques picking up genes with a *de novo* mechanism of disease, compared to recessive genes by linkage methods. **c**, Similar to Fig. 5a, the rate ratio is defined by the rate of *de novo* variants (number per patient) in autism cases divided by the rate in controls. pLoF variants in the most constrained decile of the genome are approximately 4-fold more likely to be found in cases compared to controls. **d**, The mean odds ratio of a logistic regression of schizophrenia<sup>28</sup> is plotted for each LOEUF decile. Error bars in **a-d** correspond to 95% confidence intervals.





**Extended Data Figure 10 | Applications of constraint metrics to common variant analysis of disease.** **a**,  $\tau^*$  coefficient for each LOEUF decile across 276 independent traits.  $\tau^*$ , unlike the enrichment measure reported in Fig. 5, is adjusted for 74 baseline genomics annotations. Positive values of  $\tau^*$  indicate greater per-SNP heritability than would be expected based on the other annotations in the baseline model, while negative values indicate depleted per-SNP heritability compared to that baseline expectation. **b**, Enrichment coefficient for each LOEUF decile using different window sizes to define which SNPs to include upstream and downstream of each gene. **c**, Enrichment coefficient for each LOEUF decile across traits after controlling for brain expression and gene size. Results are consistent with those shown in Fig. 5 indicating that brain gene expression and gene size do not fully explain the enrichment of heritability observed in constrained genes.

**Genome Aggregation Database Consortium:** Carlos A Aguilar Salinas<sup>1</sup>, Tariq Ahmad<sup>2</sup>, Christine M. Albert<sup>3,4</sup>, Diego Ardissino<sup>5</sup>, Gil Atzmon<sup>6,7</sup>, John Barnard<sup>8</sup>, Laurent Beaugerie<sup>9</sup>, Emelia J. Benjamin<sup>10,11,12</sup>, Michael Boehnke<sup>13</sup>, Lori L. Bonnycastle<sup>14</sup>, Erwin P. Bottinger<sup>15</sup>, Donald W Bowden<sup>16,17,18</sup>, Matthew J Bown<sup>19,20</sup>, John C Chambers<sup>21,22,23</sup>, Juliana C. Chan<sup>24</sup>, Daniel Chasman<sup>3,25</sup>, Judy Cho<sup>15</sup>, Mina K. Chung<sup>26</sup>, Bruce Cohen<sup>27,25</sup>, Adolfo Correa<sup>28</sup>, Dana Dabelea<sup>29</sup>, Mark J. Daly<sup>30,31,32</sup>, Dawood Darbar<sup>33</sup>, Ravindranath Duggirala<sup>34</sup>, Josée Dupuis<sup>35,36</sup>, Patrick T. Ellinor<sup>30,37</sup>, Roberto Elosua<sup>38,39,40</sup>, Jeanette Erdmann<sup>41,42,43</sup>, Tõnu Esko<sup>30,44</sup>, Martti Färkkilä<sup>45</sup>, Jose Florez<sup>46</sup>, Andre Franke<sup>47</sup>, Gad Getz<sup>48,49,25</sup>, Benjamin Glaser<sup>50</sup>, Stephen J. Glatt<sup>51</sup>, David Goldstein<sup>52,53</sup>, Clicerio Gonzalez<sup>54</sup>, Leif Groop<sup>55,56</sup>, Christopher Haiman<sup>57</sup>, Craig Hanis<sup>58</sup>, Matthew Harms<sup>59,60</sup>, Mikko Hiltunen<sup>61</sup>, Matti M. Holi<sup>62</sup>, Christina M. Hultman<sup>63,64</sup>, Mikko Kallela<sup>65</sup>, Jaakko Kaprio<sup>56,66</sup>, Sekar Kathiresan<sup>67,68,25</sup>, Bong-Jo Kim<sup>69</sup>, Young Jin Kim<sup>69</sup>, George Kirov<sup>70</sup>, Jaspal Kooner<sup>23,22,71</sup>, Seppo Koskinen<sup>72</sup>, Harlan M. Krumholz<sup>73</sup>, Subra Kugathasan<sup>74</sup>, Soo Heon Kwak<sup>75</sup>, Markku Laakso<sup>76,77</sup>, Terho Lehtimäki<sup>78</sup>, Ruth J.F. Loos<sup>15,79</sup>, Steven A. Lubitz<sup>30,37</sup>, Ronald C.W. Ma<sup>24,80,81</sup>, Daniel G. MacArthur<sup>31,30</sup>, Jaime Marrugat<sup>82,39</sup>, Kari M. Mattila<sup>78</sup>, Steven McCarroll<sup>32,83</sup>, Mark I McCarthy<sup>84,85,86</sup>, Dermot McGovern<sup>87</sup>, Ruth McPherson<sup>88</sup>, James B. Meigs<sup>89,25,90</sup>, Olle Melander<sup>91</sup>, Andres Metspalu<sup>44</sup>, Benjamin M Neale<sup>30,31</sup>, Peter M Nilsson<sup>92</sup>, Michael C O'Donovan<sup>70</sup>, Dost Ongur<sup>27,25</sup>, Lorena Orozco<sup>93</sup>, Michael J Owen<sup>70</sup>, Colin N.A. Palmer<sup>94</sup>, Aarno Palotie<sup>56,32,31</sup>, Kyong Soo Park<sup>75,95</sup>, Carlos Pato<sup>96</sup>, Ann E. Pulver<sup>97</sup>, Nazneen Rahman<sup>98</sup>, Anne M. Remes<sup>99</sup>, John D. Rioux<sup>100,101</sup>, Samuli Ripatti<sup>56,66,102</sup>, Dan M. Roden<sup>103,104</sup>, Danish Saleheen<sup>105,106,107</sup>, Veikko Salomaa<sup>108</sup>, Nilesh J. Samani<sup>19,20</sup>, Jeremiah Scharf<sup>30,32,67</sup>, Heribert Schunkert<sup>109,110</sup>, Moore B. Shoemaker<sup>111</sup>, Pamela Sklar<sup>112,113,114</sup>, Hilikka Soininen<sup>115</sup>, Harry Sokol<sup>9</sup>, Tim Spector<sup>116</sup>, Patrick F. Sullivan<sup>63,117</sup>, Jaana Suvisaari<sup>108</sup>, E Shyong Tai<sup>118,119,120</sup>, Yik Ying Teo<sup>118,121,122</sup>, Tuomi Tiinamäki<sup>56,123,124</sup>, Ming Tsuang<sup>125,126</sup>, Dan Turner<sup>127</sup>, Teresa Tusie-Luna<sup>128,129</sup>, Erkki Vartiainen<sup>66</sup>, James S Ware<sup>130,131,30</sup>, Hugh Watkins<sup>132</sup>, Rinse K Weersma<sup>133</sup>, Maija Wessman<sup>123,56</sup>, James G. Wilson<sup>134</sup>, Ramnik J. Xavier<sup>135,136</sup>

1. Unidad de Investigacion de Enfermedades Metabolicas. Instituto Nacional de Ciencias Medicas y Nutricion. Mexico City
2. Peninsula College of Medicine and Dentistry, Exeter, UK
3. Division of Preventive Medicine, Brigham and Women's Hospital, Boston, Massachusetts, USA.
4. Division of Cardiovascular Medicine, Brigham and Women's Hospital and Harvard Medical School, Boston, Massachusetts, USA.
5. Department of Cardiology, University Hospital, 43100 Parma, Italy
6. Department of Biology, Faculty of Natural Sciences, University of Haifa, Haifa, Israel
7. Departments of Medicine and Genetics, Albert Einstein College of Medicine, Bronx, NY, USA, 10461
8. Department of Quantitative Health Sciences, Lerner Research Institute, Cleveland Clinic, Cleveland, OH 44122, USA
9. Sorbonne Université, APHP, Gastroenterology Department, Saint Antoine Hospital, Paris, France
10. NHLBI and Boston University's Framingham Heart Study, Framingham, Massachusetts, USA.
11. Department of Medicine, Boston University School of Medicine, Boston, Massachusetts, USA.
12. Department of Epidemiology, Boston University School of Public Health, Boston, Massachusetts, USA.
13. Department of Biostatistics and Center for Statistical Genetics, University of Michigan, Ann Arbor, Michigan 48109
14. National Human Genome Research Institute, National Institutes of Health, Bethesda, MD, USA
15. The Charles Bronfman Institute for Personalized Medicine, Icahn School of Medicine at Mount Sinai, New York, NY
16. Department of Biochemistry, Wake Forest School of Medicine, Winston-Salem, NC, USA
17. Center for Genomics and Personalized Medicine Research, Wake Forest School of Medicine, Winston-Salem, NC, USA
18. Center for Diabetes Research, Wake Forest School of Medicine, Winston-Salem, NC, USA
19. Department of Cardiovascular Sciences, University of Leicester, Leicester, UK
20. NIHR Leicester Biomedical Research Centre, Glenfield Hospital, Leicester, UK
21. Department of Epidemiology and Biostatistics, Imperial College London, London, UK
22. Department of Cardiology, Ealing Hospital NHS Trust, Southall, UK
23. Imperial College Healthcare NHS Trust, Imperial College London, London, UK
24. Department of Medicine and Therapeutics, The Chinese University of Hong Kong, Hong Kong, China.
25. Department of Medicine, Harvard Medical School, Boston, MA

26. Departments of Cardiovascular Medicine, Cellular and Molecular Medicine, Molecular Cardiology, and Quantitative Health Sciences, Cleveland Clinic, Cleveland, Ohio, USA.
27. McLean Hospital, Belmont, MA
28. Department of Medicine, University of Mississippi Medical Center, Jackson, Mississippi, USA
29. Department of Epidemiology, Colorado School of Public Health, Aurora, Colorado, USA.
30. Program in Medical and Population Genetics, Broad Institute of MIT and Harvard, Cambridge, MA, USA
31. Analytic and Translational Genetics Unit, Massachusetts General Hospital, Boston, Massachusetts 02114, USA
32. Stanley Center for Psychiatric Research, Broad Institute of MIT and Harvard, Cambridge, MA, USA
33. Department of Medicine and Pharmacology, University of Illinois at Chicago
34. Department of Genetics, Texas Biomedical Research Institute, San Antonio, TX, USA
35. Department of Biostatistics, Boston University School of Public Health, Boston, MA 02118, USA
36. National Heart, Lung, and Blood Institute's Framingham Heart Study, Framingham, MA 01702, USA
37. Cardiac Arrhythmia Service and Cardiovascular Research Center, Massachusetts General Hospital, Boston, MA
38. Cardiovascular Epidemiology and Genetics, Hospital del Mar Medical Research Institute (IMIM). Barcelona, Catalonia, Spain
39. CIBER CV, Barcelona, Catalonia, Spain
40. Department of Medicine, Medical School, University of Vic-Central University of Catalonia. Vic, Catalonia, Spain
41. Institute for Cardiogenetics, University of Lübeck, Lübeck, Germany
42. 1. DZHK (German Research Centre for Cardiovascular Research), partner site Hamburg/Lübeck/Kiel, 23562 Lübeck, Germany
43. University Heart Center Lübeck, 23562 Lübeck, Germany
44. Estonian Genome Center, Institute of Genomics, University of Tartu, Tartu, Estonia
45. Helsinki University and Helsinki University Hospital, Clinic of Gastroenterology, Helsinki, Finland.
46. Diabetes Unit and Center for Genomic Medicine, Massachusetts General Hospital; Programs in Metabolism and Medical & Population Genetics, Broad Institute; Department of Medicine, Harvard Medical School
47. Institute of Clinical Molecular Biology (IKMB), Christian-Albrechts-University of Kiel, Kiel, Germany
48. Bioinformatics Program, MGH Cancer Center and Department of Pathology
49. Cancer Genome Computational Analysis, Broad Institute.
50. Endocrinology and Metabolism Department, Hadassah-Hebrew University Medical Center, Jerusalem, Israel
51. Department of Psychiatry and Behavioral Sciences; SUNY Upstate Medical University
52. Institute for Genomic Medicine, Columbia University Medical Center, Hammer Health Sciences, 1408, 701 West 168th Street, New York, New York 10032, USA.
53. Department of Genetics & Development, Columbia University Medical Center, Hammer Health Sciences, 1602, 701 West 168th Street, New York, New York 10032, USA.
54. Centro de Investigacion en Salud Poblacional. Instituto Nacional de Salud Publica MEXICO
55. Lund University, Sweden
56. Institute for Molecular Medicine Finland (FIMM), HiLIFE, University of Helsinki, Helsinki, Finland
57. Lund University Diabetes Centre
58. Human Genetics Center, University of Texas Health Science Center at Houston, Houston, TX 77030
59. Department of Neurology, Columbia University
60. Institute of Genomic Medicine, Columbia University
61. Institute of Biomedicine, University of Eastern Finland, Kuopio, Finland
62. Department of Psychiatry, PL 320, Helsinki University Central Hospital, Lapinlahdentie, 00 180 Helsinki, Finland
63. Department of Medical Epidemiology and Biostatistics, Karolinska Institutet, Stockholm, Sweden
64. Icahn School of Medicine at Mount Sinai, New York, NY, USA
65. Department of Neurology, Helsinki University Central Hospital, Helsinki, Finland.
66. Department of Public Health, Faculty of Medicine, University of Helsinki, Finland
67. Center for Genomic Medicine, Massachusetts General Hospital, Boston, Massachusetts 02114, USA
68. Cardiovascular Disease Initiative and Program in Medical and Population Genetics, Broad Institute of MIT and Harvard, Cambridge, Massachusetts 02142, USA
69. Center for Genome Science, Korea National Institute of Health, Chungcheongbuk-do, Republic of Korea.
70. MRC Centre for Neuropsychiatric Genetics & Genomics, Cardiff University School of Medicine, Hadyen Ellis Building, Maindy Road, Cardiff CF24 4HQ
71. National Heart and Lung Institute, Cardiovascular Sciences, Hammersmith Campus, Imperial College London, London, UK.
72. Department of Health, THL-National Institute for Health and Welfare, 00271 Helsinki, Finland.

73. Section of Cardiovascular Medicine, Department of Internal Medicine, Yale School of Medicine, New Haven, Connecticut; Center for Outcomes Research and Evaluation, Yale-New Haven Hospital, New Haven, Connecticut.
74. Division of Pediatric Gastroenterology, Emory University School of Medicine, Atlanta, Georgia, USA.
75. Department of Internal Medicine, Seoul National University Hospital, Seoul, Republic of Korea
76. The University of Eastern Finland, Institute of Clinical Medicine, Kuopio, Finland
77. Kuopio University Hospital, Kuopio, Finland
78. Department of Clinical Chemistry, Fimlab Laboratories and Finnish Cardiovascular Research Center- Tampere, Faculty of Medicine and Health Technology, Tampere University, Finland
79. The Mindich Child Health and Development Institute, Icahn School of Medicine at Mount Sinai, New York, NY
80. Li Ka Shing Institute of Health Sciences, The Chinese University of Hong Kong, Hong Kong, China.
81. Hong Kong Institute of Diabetes and Obesity, The Chinese University of Hong Kong, Hong Kong, China.
82. Cardiovascular Research REGICOR Group, Hospital del Mar Medical Research Institute (IMIM), Barcelona, Catalonia.
83. Department of Genetics, Harvard Medical School, Boston, MA, USA
84. Oxford Centre for Diabetes, Endocrinology and Metabolism, University of Oxford, Churchill Hospital, Old Road, Headington, Oxford, OX3 7LJ UK
85. Wellcome Centre for Human Genetics, University of Oxford, Roosevelt Drive, Oxford OX3 7BN, UK
86. Oxford NIHR Biomedical Research Centre, Oxford University Hospitals NHS Foundation Trust, John Radcliffe Hospital, Oxford OX3 9DU, UK
87. F Widjaja Foundation Inflammatory Bowel and Immunobiology Research Institute, Cedars-Sinai Medical Center, Los Angeles, CA, USA.
88. Atherogenomics Laboratory, University of Ottawa Heart Institute, Ottawa, Canada
89. Division of General Internal Medicine, Massachusetts General Hospital, Boston, MA, 02114
90. Program in Population and Medical Genetics, Broad Institute, Cambridge, MA
91. Department of Clinical Sciences, University Hospital Malmö Clinical Research Center, Lund University, Malmö, Sweden.
92. Lund University, Dept. Clinical Sciences, Skane University Hospital, Malmö, Sweden
93. Instituto Nacional de Medicina Genómica (INMEGEN), Mexico City, 14610, Mexico
94. Medical Research Institute, Ninewells Hospital and Medical School, University of Dundee, Dundee, UK.
95. Department of Molecular Medicine and Biopharmaceutical Sciences, Graduate School of Convergence Science and Technology, Seoul National University, Seoul, Republic of Korea
96. Department of Psychiatry, Keck School of Medicine at the University of Southern California, Los Angeles, California, USA.
97. Department of Psychiatry and Behavioral Sciences, Johns Hopkins University School of Medicine, Baltimore, Maryland, USA
98. Division of Genetics and Epidemiology, Institute of Cancer Research, London SM2 5NG
99. Medical Research Center, Oulu University Hospital, Oulu, Finland and Research Unit of Clinical Neuroscience, Neurology, University of Oulu, Oulu, Finland.
100. Research Center, Montreal Heart Institute, Montreal, Quebec, Canada, H1T 1C8
101. Department of Medicine, Faculty of Medicine, Université de Montréal, Québec, Canada
102. Broad Institute of MIT and Harvard, Cambridge MA, USA
103. Department of Biomedical Informatics, Vanderbilt University Medical Center, Nashville, Tennessee, USA.
104. Department of Medicine, Vanderbilt University Medical Center, Nashville, Tennessee, USA.
105. Department of Biostatistics and Epidemiology, Perelman School of Medicine at the University of Pennsylvania, Philadelphia, PA, USA
106. Department of Medicine, Perelman School of Medicine at the University of Pennsylvania, Philadelphia, PA, USA
107. Center for Non-Communicable Diseases, Karachi, Pakistan
108. National Institute for Health and Welfare, Helsinki, Finland
109. Deutsches Herzzentrum München, Germany
110. Technische Universität München
111. Division of Cardiovascular Medicine, Nashville VA Medical Center and Vanderbilt University, School of Medicine, Nashville, TN 37232-8802, USA.
112. Department of Psychiatry, Icahn School of Medicine at Mount Sinai, New York, NY, USA
113. Department of Genetics and Genomic Sciences, Icahn School of Medicine at Mount Sinai, New York, NY, USA
114. Institute for Genomics and Multiscale Biology, Icahn School of Medicine at Mount Sinai, New York, NY, USA
115. Institute of Clinical Medicine, neurology, University of Eastern Finland, Kuopio, Finland
116. Department of Twin Research and Genetic Epidemiology, King's College London, London UK
117. Departments of Genetics and Psychiatry, University of North Carolina, Chapel Hill, NC, USA

118. Saw Swee Hock School of Public Health, National University of Singapore, National University Health System, Singapore
119. Department of Medicine, Yong Loo Lin School of Medicine, National University of Singapore, Singapore
120. Duke-NUS Graduate Medical School, Singapore
121. Life Sciences Institute, National University of Singapore, Singapore.
122. Department of Statistics and Applied Probability, National University of Singapore, Singapore.
123. Folkhälsan Institute of Genetics, Folkhälsan Research Center, Helsinki, Finland
124. HUCH Abdominal Center, Helsinki University Hospital, Helsinki, Finland
125. Center for Behavioral Genomics, Department of Psychiatry, University of California, San Diego
126. Institute of Genomic Medicine, University of California, San Diego
127. Juliet Keidan Institute of Pediatric Gastroenterology, Shaare Zedek Medical Center, The Hebrew University of Jerusalem, Israel
128. Instituto de Investigaciones Biomédicas UNAM Mexico City
129. Instituto Nacional de Ciencias Médicas y Nutrición Salvador Zubirán Mexico City
130. National Heart & Lung Institute & MRC London Institute of Medical Sciences, Imperial College London, London UK
131. Cardiovascular Research Centre, Royal Brompton & Harefield Hospitals NHS Trust, London UK
132. Radcliffe Department of Medicine, University of Oxford, Oxford UK
133. Department of Gastroenterology and Hepatology, University of Groningen and University Medical Center Groningen, Groningen, the Netherlands
134. Department of Physiology and Biophysics, University of Mississippi Medical Center, Jackson, MS 39216, USA
135. Program in Infectious Disease and Microbiome, Broad Institute of MIT and Harvard, Cambridge, MA, USA
136. Center for Computational and Integrative Biology, Massachusetts General Hospital



# References

1. Schneeberger, K. Using next-generation sequencing to isolate mutant genes from forward genetic screens. *Nat Rev Genet* **15**, 662–676 (2014).
2. Zambrowicz, B. P. & Sands, A. T. Knockouts model the 100 best-selling drugs—will they model the next 100? *Nat Rev Drug Discov* **2**, 38–51 (2003).
3. MacArthur, D. G. *et al.* A Systematic Survey of Loss-of-Function Variants in Human Protein-Coding Genes. *Science* **335**, 823–828 (2012).
4. Analysis of protein-coding genetic variation in 60,706 humans. *Nature* **536**, 285–291 (2016).
5. The Genetic Basis of Mendelian Phenotypes: Discoveries, Challenges, and Opportunities. *Am J Hum Genet* **97**, 199–215 (2015).
6. Cohen, J. C., Boerwinkle, E., Mosley, T. H., Jr. & Hobbs, H. H. Sequence Variations in PCSK9, Low LDL, and Protection against Coronary Heart Disease. *N Engl J Med* **354**, 1264–1272 (2006).
7. A framework for the interpretation of de novo mutation in human disease. *Nat Genet* (2014). doi:10.1038/ng.3050
8. Petrovski, S., Wang, Q., Heinzen, E. L., Allen, A. S. & Goldstein, D. B. Genic Intolerance to Functional Variation and the Interpretation of Personal Genomes. *PLoS Genet* **9**, e1003709 (2013).
9. Cassa, C. A. *et al.* Estimating the selective effects of heterozygous protein-truncating variants from human exome data. *Nat Genet* **49**, 806–810 (2017).
10. Petrovski, S. *et al.* The Intolerance of Regulatory Sequence to Genetic Variation Predicts Gene Dosage Sensitivity. *PLoS Genet* **11**, e1005492 (2015).
11. Collins, R. L. *et al.* An open resource of structural variation for medical and population genetics. *bioRxiv* 578674 (2019). doi:10.1101/578674
12. Minikel, E. V. *et al.* Evaluating potential drug targets through human loss-of-function genetic variation. *bioRxiv* 530881 (2019). doi:10.1101/530881
13. Whiffin, N. *et al.* Human loss-of-function variants suggest that partial LRRK2 inhibition is a safe therapeutic strategy for Parkinsons disease. *bioRxiv* 561472 (2019). doi:10.1101/561472
14. GTEx Consortium *et al.* Genetic effects on gene expression across human tissues. *Nature* **550**, 204–213 (2017).
15. Cummings, B. B. *et al.* Transcript expression-aware annotation improves rare variant discovery and interpretation. *bioRxiv* 554444 (2019). doi:10.1101/554444
16. Wang, Q. *et al.* Landscape of multi-nucleotide variants in 125,748 human exomes and 15,708 genomes. *bioRxiv* **45**, 573378 (2019).
17. Whiffin, N. *et al.* Characterising the loss-of-function impact of 5' untranslated region variants in whole genome sequence data from 15,708 individuals. *bioRxiv* **5**, 543504 (2019).
18. Hail Team. Hail 0.2.19. <https://github.com/hail-is/hail/releases/tag/0.2.19>. (2019).
19. McInnes, L., Healy, J., Saul, N. & Großberger, L. UMAP: Uniform Manifold Approximation and Projection. *Journal of Open Source Software* **3**, 861 (2018).
20. Diaz-Papkovich, A., Anderson-Trocme, L. & Gravel, S. Revealing multi-scale population structure in large cohorts. *bioRxiv* 423632 (2018). doi:10.1101/423632
21. Jónsson, H. *et al.* Parental influence on human germline *de novo* mutations in 1,548 trios from Iceland. *Nature* **549**, 519–522 (2017).
22. Motenko, H., Neuhauser, S. B. & O'Keefe, M. MouseMine: a new data warehouse for MGI. *Mamm. Genome* **26**, 325–330 (2015).
23. Eppig, J. T. *et al.* The Mouse Genome Database (MGD): facilitating mouse as a model for human biology and disease. *Nucleic Acids Res* **43**, D726–36 (2015).

24. Hart, T. *et al.* Evaluation and Design of Genome-Wide CRISPR/SpCas9 Knockout Screens. *G3 (Bethesda)* **7**, 2719–2727 (2017).
25. Feiglin, A., Allen, B. K., Kohane, I. S. & Kong, S. W. Comprehensive Analysis of Tissue-wide Gene Expression and Phenotype Data Reveals Tissues Affected in Rare Genetic Disorders. **5**, 140–148.e2 (2017).
26. Gravel, S. When Is Selection Effective? *Genetics* **203**, 451–462 (2016).
27. Henn, B. M., Botigué, L. R., Bustamante, C. D., Clark, A. G. & Gravel, S. Estimating the mutation load in human genomes. *Nat Rev Genet* **16**, 333–343 (2015).
28. Walters, J. T. R. *et al.* The contribution of rare variants to risk of schizophrenia in individuals with and without intellectual disability. *Nat Genet* **511**, 421 (2017).
29. Ganna, A. *et al.* Quantifying the Impact of Rare and Ultra-rare Coding Variation across the Phenotypic Spectrum. *Am J Hum Genet* **102**, 1204–1211 (2018).
30. Ganna, A. *et al.* Ultra-rare disruptive and damaging mutations influence educational attainment in the general population. *Nature Neuroscience* 2016 19:11 **19**, 1563–1565 (2016).
31. Eilbeck, K., Quinlan, A. & Yandell, M. Settling the score: variant prioritization and Mendelian disease. *Nat Rev Genet* **18**, 599–612 (2017).
32. DeBoever, C. *et al.* Medical relevance of protein-truncating variants across 337,205 individuals in the UK Biobank study. *Nat Comms* **9**, 1612 (2018).
33. Emdin, C. A. *et al.* Analysis of predicted loss-of-function variants in UK Biobank identifies variants protective for disease. *Nat Comms* **9**, 1613 (2018).
34. Satterstrom, F. K. *et al.* ASD and ADHD have a similar burden of rare protein-truncating variants. *bioRxiv* 277707 (2018). doi:10.1101/277707
35. de Andrade, K. C. *et al.* Variable population prevalence estimates of germline TP53variants: A gnomAD-based analysis. *Hum Mutat* **40**, 97–105 (2018).
36. Laver, T. W., Weedon, M. N., Caswell, R., Hussain, K. & Flanagan, S. E. Analysis of large-scale sequencing cohorts does not support the role of variants in UCP2 as a cause of hyperinsulinaemic hypoglycaemia. *Hum Mutat* **38**, 1442–1444 (2017).
37. Sundaram, L. *et al.* Predicting the clinical impact of human mutation with deep neural networks. *Nat Genet* **50**, 1161–1170 (2018).
38. Glassberg, E. C., Lan, X. & Pritchard, J. K. Evidence for Weak Selective Constraint on Human Gene Expression. *Genetics* genetics.301833.2018 (2018). doi:10.1534/genetics.118.301833
39. El-Brolosy, M. A. *et al.* Genetic compensation triggered by mutant mRNA degradation. *Nature* **568**, 193–197 (2019).
40. Tuladhar, R. *et al.* CRISPR/Cas9-based mutagenesis frequently provokes on-target mRNA misregulation. *bioRxiv* **136**, 920 (2019).
41. Findlay, G. M. *et al.* Accurate classification of BRCA1 variants with saturation genome editing. *Nature* **562**, 217–222 (2018).
42. Short, P. J., Gallone, G., Geschwind, D. H., Barrett, J. C. & Hurles, M. E. *De novo* mutations in regulatory elements in neurodevelopmental disorders. *Nature* (2018). doi:10.1038/nature25983
43. Martin, A. R., Kanai, M., Kamatani, Y., Neale, B. M. & Daly, M. J. Hidden ‘risk’ in polygenic scores: clinical use today could exacerbate health disparities. *bioRxiv* 441261 (2019). doi:10.1101/441261
44. Fuller, Z., Berg, J. J., Mostafavi, H., Sella, G. & Przeworski, M. Measuring intolerance to mutation in human genetics. *bioRxiv* 382481 (2018). doi:10.1101/382481
45. Zook, J. M. *et al.* Integrating human sequence data sets provides a resource of benchmark SNP and indel genotype calls. *Nat Biotechnol* **32**, 246–251 (2014).
46. Li, H., Bloom, J. M., Farjoun, Y., Fleharty, M. & Neale, B. A synthetic-diploid benchmark for accurate variant-calling evaluation. *Nature Methods* **15**, 595–597 (2018).



47. Fromer, M. *et al.* *De novo* mutations in schizophrenia implicate synaptic networks. *Nature* **506**, 179–184 (2014).
48. Neale, B. M. *et al.* Patterns and rates of exonic *de novo* mutations in autism spectrum disorders. *Nature* **485**, 242–245 (2012).