

# Relocating agriculture could drastically reduce humanity's ecological footprint

Robert M. Beyer<sup>1,\*</sup>, Andrea Manica<sup>1</sup>, Tim T. Rademacher<sup>2</sup>

<sup>1</sup>Department of Zoology, University of Cambridge, Downing Street, Cambridge CB2 3EJ, United Kingdom; <sup>2</sup>Department of Organismic and Evolutionary Biology, Harvard University, 22 Divinity Avenue, Cambridge MA 02138, United States

## Abstract

**Agriculture is a major driver of global biodiversity loss<sup>1,2</sup>, accounts for one quarter of greenhouse gas emissions<sup>3</sup>, and is responsible for 70% of freshwater use<sup>4,5</sup>. How can land be used for agriculture in a way that minimises the impact on the world's natural resources while maintaining current production levels? Here, we solved this more than 10 million dimensional optimisation problem and find that moving current croplands and pastures to optimal locations, while allowing then-abandoned areas to regenerate, could simultaneously decrease the current carbon, biodiversity and water footprint of global agriculture by up to 71%, 91% and 100%, respectively. This would offset current net CO<sub>2</sub> emissions for half a century, massively alleviate pressure on global biodiversity and greatly reduce freshwater shortages. Whilst these achievements would require global coordination of agricultural policies, reductions of up to 59%, 78% and close to 100% are achievable by relocating production within national borders, with the greatest potential for carbon footprint reduction held by the world's top three CO<sub>2</sub> emitting countries.**

## Main text

The conversion of almost half of the world's ice-free land area<sup>6</sup> to cropland and pasture has contributed to three of humanity's most pressing environmental challenges<sup>7,8</sup>: (1) agriculture accounts for a quarter of anthropogenic greenhouse gas emissions<sup>3</sup>, largely from the release of carbon stored in vegetation and soils<sup>9,10</sup>; (2) agriculture is the predominant driver of habitat loss, the greatest threat to

global biodiversity<sup>1,2</sup>; and (3) agriculture is responsible for 70% of global freshwater usage for irrigation, leading to shortages of potable water in many arid areas of the world<sup>4,5</sup>. A rising demand for animal products<sup>11</sup> thwarts hopes that the potential for dietary shifts to decrease the environmental footprints of food production<sup>7,12,13,8</sup> can be fully realised in the near future. Yield increases through more resource-efficient practices, technological advancements and genetically enhanced crop varieties are promising<sup>7,14,8</sup>, however a growing human population and increasing per-capita consumption<sup>15,16</sup> threaten to offset the potential of these advancements without complementary measures.

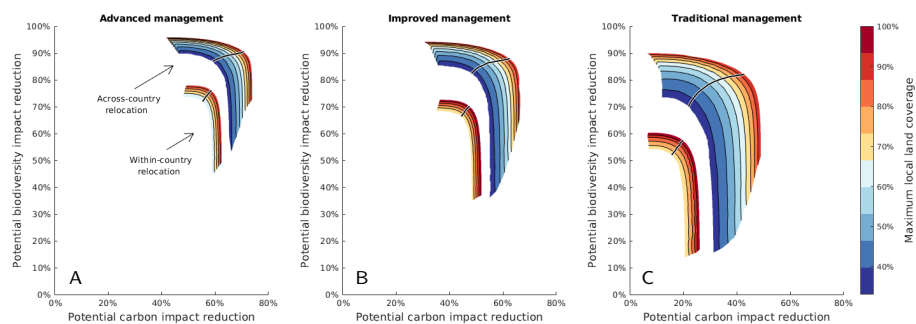
Optimising the spatial distribution of production could help to minimise the impact of agriculture<sup>17</sup>. Empirical evidence shows that biodiversity and carbon stocks previously lost through land conversion can rapidly reach pre-disturbance levels if these lands are allowed to regenerate, often without active human intervention (Supplementary Information). Relocating croplands and pastures that are currently situated in areas with high potential biodiversity and carbon stocks, and subsequently allowing these areas to regenerate, may therefore lead to net carbon and biodiversity benefits. If, in addition, new agricultural areas were established where sufficient rainfall obviates the need for irrigation, the water footprint of global agriculture could be reduced significantly at the same time.

We used global maps of the current distribution of pasture and harvested areas of 43 major crops (Extended Data Table 1), which between them account for over 95% of global agricultural land (Methods), to assess the current carbon and biodiversity footprints of agriculture. The carbon impact in a specific area was calculated as the difference between local potential natural carbon stocks in vegetation and soils, and carbon stocks under the type of agricultural land use present there<sup>10</sup> (Methods). Similarly, the local biodiversity impact of agriculture was estimated as the difference between local biodiversity under natural vegetation, and under cropland or pasture<sup>18</sup> (Methods). Biodiversity is measured in terms of range rarity, in which local bird, mammal and amphibian species richness is weighted by the inverse of the species' ranges. Range rarity has been advocated as a particularly meaningful biodiversity metric for conservation planning<sup>19,20</sup>.

By the same methods, we predicted potential carbon and biodiversity impacts in areas that are currently not cultivated but are suitable for agricultural use (Methods). We used estimates of agro-climatically attainable crop and grass production on potential agricultural areas that assume only rain-fed water supply<sup>21</sup>, so as to identify land use configurations that require no irrigation. We considered three different management levels, representing the range from traditional, subsistence-based organic farming systems to advanced, fully mechanised production that uses high-yielding crop varieties and optimum fertiliser and pesticide application<sup>21</sup>.

Using these realised and potential yield and impact estimates, we identified the

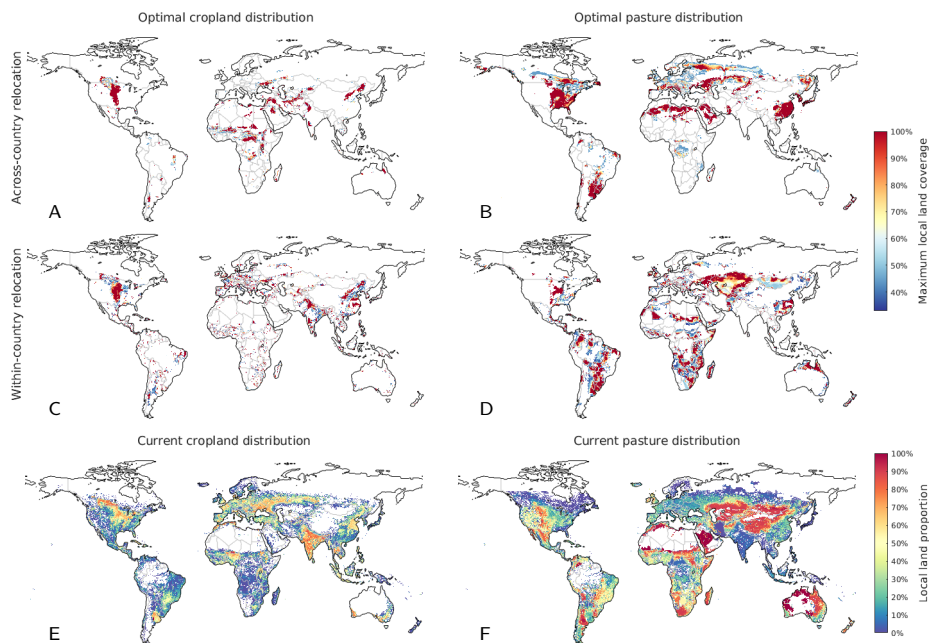
global distribution of agricultural areas that provides the same total production of the 43 crops and grass as the current one, while minimising the total environmental footprint. On a 30 arc-minute ( $0.5^\circ$ ) grid, this requires solving a more than  $10^6$ -dimensional linear optimisation problem (Methods). We estimated that for the optimal configuration of agricultural areas and advanced management farming, current carbon and biodiversity impacts of global agriculture could be simultaneously reduced by up to 71% and 91%, respectively (Fig. 1A). This would offset the current annual increase of atmospheric  $\text{CO}_2$  of  $4.7 \text{ Pg C y}^{-1}$ <sup>(22)</sup> for 49 years, while drastically alleviating the pressure on terrestrial biodiversity. As per the data used, no irrigation is required to supplement rainfall water supply. The total worldwide area used for agriculture in this scenario is less than half of its current extent. The trade-off between reducing carbon and biodiversity impacts is minimal; optimising land use for each impact measure independently yields only marginally higher reduction potentials of 74% and 98%, respectively (Fig. 1A). Under traditional farming, simultaneous carbon and biodiversity impact reductions of up to 43% and 84%, respectively, are feasible (Fig. 1C). Whilst this confirms that increasing crop yields is important for reducing the environmental footprint of agriculture<sup>23,14,7,16,24,12,8</sup>, it demonstrates that a substantial impact reduction could be achieved by land reallocation alone.



**Figure 1:** Possible reduction of current carbon and biodiversity footprints of global agriculture by optimally relocating agricultural production. Each contour level represents the frontier of simultaneously achievable carbon and biodiversity impact reduction for a given proportion of local land area that is available for agricultural use (see text). Black lines correspond to a subjectively defined optimal trade-off between carbon and biodiversity impacts.

Thus far, we have assumed that the entire area of each grid cell is available for agricultural use. How does the potential for reducing impact change if only a proportion of each grid cell can be cultivated, while the remainder is retained as natural ecosystem or used for other purposes? In this scenario, total impacts are necessarily higher, because less optimal areas, in which environmental impacts are

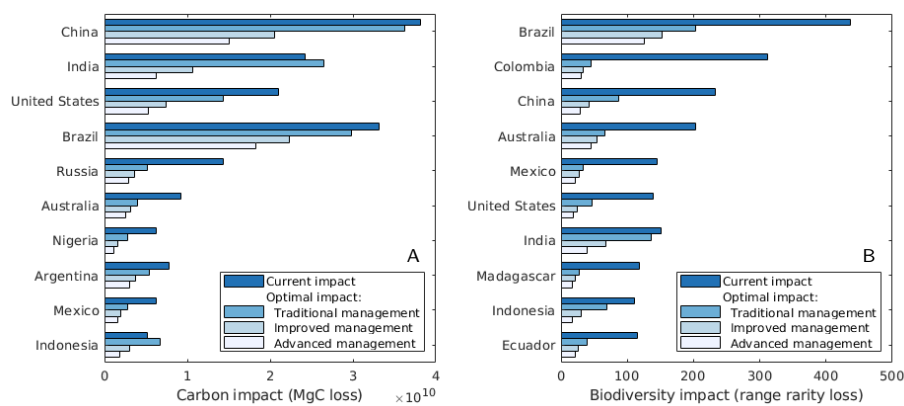
higher in relation to yield, also need to be cultivated to meet a given production level. This is disproportionately the case for low intensity farming, which inherently requires more land. We found that when only half of the local land area can be used for agriculture, carbon and biodiversity impacts could be simultaneously reduced by 63% and 90%, respectively, under advanced management (Fig. 1A), but only by 30% and 80%, respectively, for traditional farming (Fig. 1C). Allocating as much land as possible in optimal areas therefore becomes more important the less advanced the farming system is.



**Figure 2:** Optimal and current distribution of agricultural areas. **(A)–(D)** Optimal distribution of croplands and pastures for across- and within-country relocation of current agricultural areas. Red areas represent the land that is required to meet current production levels if grid cells are entirely available for agricultural use, while both red and yellow areas are required when only 50% of grid cells are allowed to be cultivated, etc. (see text). Maps show optimal configurations for advanced management farming and the optimal impact trade-off shown in Fig. 1A. **(E)–(F)** Current distribution of croplands and pastures<sup>25</sup>. Current and optimal distributions for a specific crop, maize, are shown in Extended Data Figure 2C–E.

Moving agricultural production, and thus labour and capital, across national borders poses numerous political and socio-economic challenges that will be difficult to resolve in the near future. We therefore repeated our analyses, allowing croplands and pastures to be relocated only within countries, while requiring current national production levels to remain unchanged (Methods). We estimated that if each country independently optimised its distribution of agricultural areas,

the current global carbon and biodiversity impacts of agriculture could be simultaneously reduced by up to 59% and 78%, respectively (Fig. 1A). In this scenario, the vast majority of production can be relocated so that rainfall provides sufficient water supply; however, some countries produce crops for which national natural agro-climatic conditions are not suitable, and thus some irrigation continues to be needed (Methods). Fig. 3 lists the ten countries with the highest absolute carbon and biodiversity reduction potentials, showing that the world's three largest CO<sub>2</sub> emitters – China, India and the United States<sup>26</sup> – are also the countries that can reduce their agricultural carbon footprint the most.



**Figure 3:** Current national (A) carbon and (B) biodiversity impacts of agriculture, and potentials for impact reduction by means of within-border relocation of agricultural areas for 10 countries, ordered by absolute impact reduction potential. Results correspond to the optimal impact trade-offs shown in Fig. 1A–C.

Agricultural areas optimally sited to minimise environmental impacts coincide only to a limited extent with their current distribution (Fig. 2). The world's most produced crop, maize, for example, is currently planted predominantly in the United States and China, but would ideally be grown in parts of Sub-Saharan Africa (Extended Data Fig. 1). In the scenario of optimal within-country land reallocation, the optimal land use coincides with the current one on 30% of optimal areas, while 42% of optimal areas are located in regions already under some type of agricultural use, and 45% are located in either currently active or abandoned agricultural areas (Extended Data Fig. 2). This overlap is significantly lower in the scenario of across-country relocation (Extended Data Fig. 2). Whilst the expansion of agriculture into degraded areas has been advocated as a way to minimise future biodiversity and carbon losses<sup>7,14</sup>, our results suggest that potential biodiversity and carbon stocks on currently cultivated and abandoned agricultural areas are often so high that, in principle, their restoration would be preferable to the protection of natural habitat in the identified optimal growing areas.

For computational reasons, we did not explore the possibility of crop rotations and other diversification types, which can have benefits, e.g. for pest and disease suppression<sup>27</sup>. Our analyses also do not account for possible changes in yields as the result of climate change<sup>28</sup>. Both aspects may affect the precise location of optimal areas, and decrease or increase the reduction potentials identified here, however, we do not expect them to qualitatively change our overall conclusions.

Whilst our estimates of achievable impact reductions assume a fully optimised distribution of agricultural areas, we stress that even relocating only a small share of production would already generate a substantial portion of these benefits. 50% of the current total carbon impacts of individual crops are caused by areas that account for only  $26\pm 5\%$  of the total production, while a mere  $8\pm 4\%$  of production are responsible for 50% of biodiversity impacts (Extended Data Fig. 3). Prioritising the relocation of these areas, where the ratio of environmental impact to yield is largest, would have disproportionately large carbon and biodiversity benefits, and represents a particularly 'low-hanging' opportunity for countries to reduce impact.

Spatial reallocation of agricultural production has tremendous potential to reduce its environmental footprint, but the implementation of such changes would require careful management of the process. Relocating cultivated areas can only lead to a reduction of impact if abandoned areas with high potential biodiversity and carbon stocks are protected and their regeneration is ensured. This requires effective institutional, legal, and policy frameworks, and financial incentives for landowners<sup>29,30,31</sup>. Although biodiversity and carbon stocks often regenerate most effectively without human intervention<sup>32</sup>, active restoration efforts can be necessary to ensure the return of rare species in other cases<sup>33</sup>.

A range of policy mechanisms have proven effective in steering agricultural production to desirable areas<sup>34</sup>. Their implementation at the national and international level will be crucial for realising the environmental potential of moving agricultural areas, providing gains that are badly needed if we are to reverse the ongoing degradation of global climate, biodiversity and water under an ever increasing demand for food.

## Methods

In the following, we define the mathematical optimisation problem whose solutions represent minimum impact configurations of agricultural land, and specify the datasets that were used to solve it. We use the following notation:

- $x$ : index of an arbitrary cell on a global 30 arc-minute ( $0.5^\circ$ ) grid
- $A(x)$ : physical area of grid cell  $x$  (ha)
- $Y_i(x)$ : current yield of crop  $i$  in grid cell  $x$  ( $\text{Mg C ha}^{-1} \text{y}^{-1}$ )
- $H_i(x)$ : current harvested area fraction of crop  $i$  in grid cell  $x$
- $C_i(x)$ : carbon impact of crop  $i$  in grid cell  $x$  ( $\text{Mg ha}^{-1}$ )
- $B_i(x)$ : biodiversity impact of crop  $i$  in grid cell  $x$  (local range rarity loss)
- $\hat{Y}_i(x)$ : agro-climatically attainable yield of crop  $i$  in grid cell  $x$  ( $\text{Mg ha}^{-1} \text{y}^{-1}$ )
- $V(x)$ : fraction of area available for agriculture in grid cell  $x$

On pastures, yield is assessed in terms of the annual production of forage per hectare. The current total annual production of crop  $i$  is given by

$$P_i = \sum_x \underbrace{H_i(x) \cdot A(x) \cdot Y_i(x)}_{\text{Production of crop } i \text{ in grid cell } x}, \quad (1)$$

and the current global carbon and biodiversity impacts of agriculture are given by

$$\sum_i \underbrace{\sum_x H_i(x) \cdot A(x) \cdot C_i(x)}_{\text{Total carbon impact of crop } i} \quad \text{and} \quad \sum_i \underbrace{\sum_x H_i(x) \cdot A(x) \cdot B_i(x)}_{\text{Total biodiversity impact of crop } i},$$

respectively.

For each crop  $i$  and each grid cell  $x$ , we determined the harvested area fraction  $\hat{H}_i(x)$  such that the total production of each crop  $i$  equals the current production  $P_i$ , while the environmental impact is minimised. Any solution must satisfy the equality constraints

$$\sum_x \hat{H}_i(x) \cdot A(x) \cdot \hat{Y}_i(x) = P_i \quad \text{for each crop } i, \quad (2a)$$

requiring the total production on new agricultural areas to be equal to the current one, and the inequality constraints

$$\sum_i \hat{H}_i(x) \leq V(x) \quad \text{for each grid cell } x, \quad (2b)$$

which ensure that the local sum of agricultural lands is not larger than the locally available area.

Subject to these constraints, we can identify the configuration that minimises the total carbon or biodiversity impact by minimising the objective function

$$\sum_i \sum_x \widehat{H}_i(x) \cdot A(x) \cdot C_i(x) \quad \text{or} \quad \sum_i \sum_x \widehat{H}_i(x) \cdot A(x) \cdot B_i(x),$$

respectively. More generally, we consider the linearly weighted objective function

$$\sum_i \sum_x \widehat{H}_i(x) \cdot A(x) \cdot (\lambda \cdot C_i(x) + (1 - \lambda) \cdot B_i(x)) \rightarrow \min, \quad (3)$$

where  $\lambda$  ranges between 0 and 1, thus allowing us to minimise both impacts simultaneously and examine potential trade-offs.

The above framework is identical when examining the potential for impact reduction by means of relocating croplands within national borders rather than globally. In this case, the sum over  $x$  in the calculation of national production (Eq. (1)), in the optimisation constraints (Eqs. (2a)–(2b)) and in the objective function (Eq. (3)) is taken over grid cells that correspond to specific countries rather than the whole world, and the optimisation problem is solved independently for each country. Some countries produce small quantities of crops that, according to the data used here, would not grow anywhere within their borders under natural climatic conditions, i.e. these crops likely require irrigation or greenhouses cultivation. Our analysis shows that these crops account for a fraction of 0.12% of current global agricultural areas that can not be relocated within national borders to areas where rain-fed cultivation is possible. These crops were excluded from Eq. (3) for the respective countries; we added the environmental impacts associated with the current growing areas of these crops to the minimum national impacts found by Eq. (3).

Although all data required to compute the relevant variables,  $A(x)$ ,  $Y_i(x)$ ,  $H_i(x)$ ,  $C_i(x)$ ,  $B_i(x)$ ,  $\widehat{Y}_i(x)$  and  $V(x)$  (see below), are available at a 5 arc-minute ( $0.083^\circ$ ) grid resolution, for computational reasons, we upscaled the final data to a 30 arc-minute ( $0.5^\circ$ ) grid. For pasture and 43 crops, this implies a more than 10 million dimensional linear optimisation problem. We solved Eq. (3) using the dual-simplex algorithm in the function *linprog* of the Matlab R2018a Optimization Toolbox<sup>35</sup>.

**Current and potential agricultural areas and yields:  $H_i(x)$ ,  $Y_i(x)$ ,  $\widehat{Y}_i(x)$**  We used global maps of harvested areas,  $H_i(x)$ , and fresh weight yields,  $Y_i(x)$ , of 43 crops<sup>36</sup>, and a global map for pasture<sup>25</sup> (Extended Data Table 1). These areas cover 95.2% of the combined area of pasture and harvested areas of 175 crops<sup>36</sup>, for which data is available. We used global maps of potential growing areas and agro-climatically attainable dry weight yields,  $\widehat{Y}_i(x)$ , for baseline climate, rain-fed water supply and three different management levels for the same 43 crops and



pasture grass<sup>21</sup>. Management levels represent the range from traditional, labour-intensive farming systems without synthetic chemicals, to advanced, market-oriented production that is fully mechanised, uses high-yielding crop varieties, and optimum applications of nutrients and pest, disease and weed control<sup>21</sup>. Potential yields were converted from dry weight to fresh weight using crop-specific conversion factors<sup>36</sup>. We are not aware of a global dataset of forage production on current pastures, and therefore used potential pasture grass yields for rain-fed water supply and intermediate input management as an estimate on these areas.

**Carbon impact:**  $C_i(x)$  Following ref.<sup>10</sup>, the local carbon impact of agriculture,  $C_i(x)$ , was estimated as the difference between potential natural vegetation and soil carbon stocks, and carbon stocks under agricultural land cover.

The change of carbon stocks in vegetation resulting from land conversion is given by the difference of carbon stored in potential natural vegetation<sup>10</sup> and carbon stored in grass or crops, which was calculated as in ref.<sup>10</sup>, based on the data compiled by ref.<sup>36</sup>.

Due to the technical difficulties of acquiring empirical data across large spatial scales, spatially-explicit global estimates of soil organic carbon (SOC) dynamics under varying land use types are currently not available. We therefore chose a simple approach, consistent with average estimates across large spatial scales, rather than a complex spatially-explicit model for which, given the limited empirical data, robust predictions on and beyond currently cultivated areas would not be possible. Following ref.<sup>10</sup>, and supported by empirical meta-analyses<sup>37,38,39,40,41</sup>, we assumed a 25% reduction of potential natural SOC (see below) from the conversion to cropland. Meta-analyses of the change of SOC stocks when natural habitat is converted to pasture suggest, on average, no significant change<sup>39</sup>, a slight increase<sup>38,41</sup> or slight decrease<sup>40</sup>. Here, we assumed no change in carbon stocks when natural habitat is converted to pasture. Absolute local SOC loss from the conversion of potential natural vegetation to cropland or pasture was estimated by applying the appropriate loss percentages to a global map of pre-agricultural SOC stocks<sup>9</sup>. The total local carbon impact of agriculture ( $\text{Mg C ha}^{-1}$ ) is thus given by

$$C_i(x) = C_{\text{potential vegetation}}(x) + \gamma \cdot C_{\text{potential SOC}}(x) - C_{\text{crop}}(i),$$

where  $C_{\text{potential vegetation}}(x)$ ,  $C_{\text{potential SOC}}(x)$  and  $C_{\text{crop}}(i)$  denote the carbon stocks ( $\text{Mg C ha}^{-1}$ ) of potential natural vegetation, potential natural SOC stocks, and carbon stocks of crop  $i$ , respectively, in the grid cell  $x$ , and where  $\gamma$  is equal to 0.25 or 0 if land is converted to cropland or pasture, respectively.

We did not consider greenhouse gas emissions from sources other than from land use change. This includes nitrous emissions from fertilised soils and methane emissions from livestock and rice paddies<sup>42</sup>. In contrast to the one-off

land use change emissions, these are ongoing emissions that are tied to production and incur continually. We do not consider available data sufficient to allow a robust extrapolation of these emission types to currently uncultivated land. We argue, though, that the magnitude of these emissions in a scenario of land reallocation in which total production is constant, is likely similar to that associated with the current distribution of agricultural areas. We also did not consider emissions associated with transport; however, these have been argued to be small compared to other food chain emissions<sup>43</sup> and poorly correlated with the actual distance travelled by agricultural products<sup>44</sup>.

**Biodiversity impact:  $B_i(x)$**  We assessed the local biodiversity impact of agriculture in terms of range rarity loss. Range rarity has been advocated as a metric for biodiversity that is more relevant to conservation planning than alternative measures, such as species richness<sup>45,46,20,19,47</sup>.  $B_i(x)$  is calculated as the difference between range rarity under natural vegetation and under agricultural land cover as follows: Using a similar approach to that of ref.<sup>18</sup>, we considered a bird, mammal or amphibian species to be potentially present in a cell of a 5 arc-minute grid if the species' spatial extent of occurrence<sup>48,49</sup> overlays the grid cell, and if its habitat preferences<sup>48,49</sup> include the local potential natural vegetation type<sup>50</sup>. Each species' potential natural range (ha) is then given by the total area of all grid cells identified as containing the species. Next, potential natural range rarity of each grid cell was obtained as the sum of the inverse ranges of all species present in the grid cell under potential natural vegetation. Finally, global maps of range rarity loss resulting from the conversion of natural vegetation to cropland or pasture were derived by subtracting, in each grid cell, the sum of the inverse ranges of potentially present species whose habitat preferences also include cropland or pasture, respectively, from the potential natural range rarity. As with  $C_i(x)$  (see above), this approach allowed us to estimate biodiversity impact for both currently cultivated and uncultivated areas.

**Land available for agriculture:  $V(x)$**  We assumed that the maximum area available for agriculture in a grid cell is given by the proportion not occupied by any crop other than the 43 considered here<sup>36</sup>, or by water bodies, infrastructure or settlements<sup>21</sup>. Areas where soil and terrain-slope conditions are not suitable for agriculture are already excluded in the potential yield data<sup>21</sup>.

As specified in the main text, we also examined the scenario in which only a certain fraction of this maximum available area is available as potential agricultural land.

## Supplementary Information

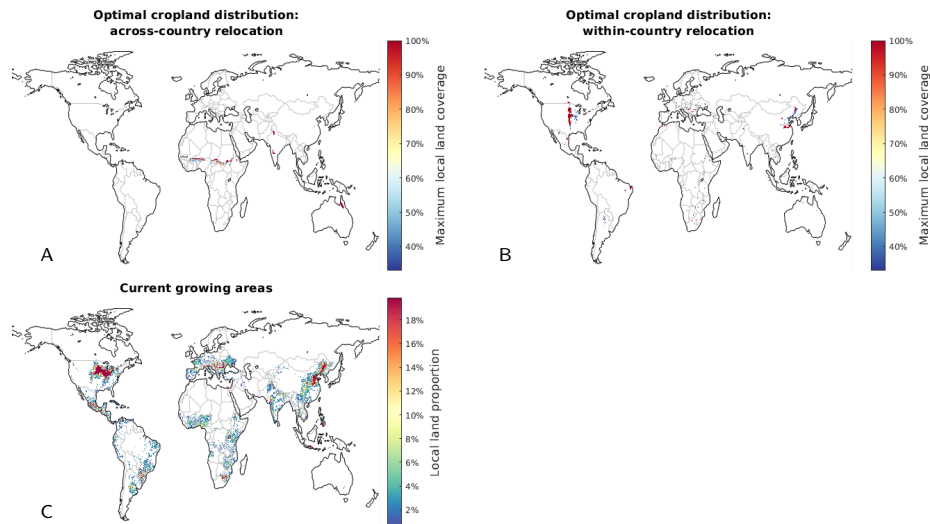
### Carbon and biodiversity recovery on abandoned agricultural land

We briefly review empirical results on the recovery of biodiversity and carbon stocks on regenerating agriculturally degraded land. In both cases, recovery follows an asymptotic concave trajectory; the time required to reach pre-disturbance levels can therefore be difficult to pinpoint, as both slightly shorter or longer times correspond to similar recovery levels in the flat saturation stage of the recovery function. Above- and below-ground carbon stocks have been shown to asymptotically reach pre-disturbance values within 50–100 years after land abandonment<sup>51,52,53,54,55,56,57</sup>. Slower biomass accumulation coupled with lower potential carbon stocks in temperate forests leads to overall similar recovery times compared to tropical forests<sup>58</sup>. In grasslands, carbon stocks recover within a few decades following land abandonment<sup>59,53</sup>. Faunal species richness on regenerating degraded land reaches pre-disturbance levels on timescales of decades to a century<sup>60,61,55,62,52,63</sup>. Initial colonists may represent different species to those present before degradation occurred<sup>64,62,65</sup>, but the proportion of old-growth species increases as secondary ecosystems age, thereby gradually replacing non-native species<sup>66,64,67,62,55,68,69</sup>. Biodiversity tends to regenerate faster in temperate than in tropical regions, and faster in grassland and shrubland biomes than in forests<sup>61,70,52,63</sup>.

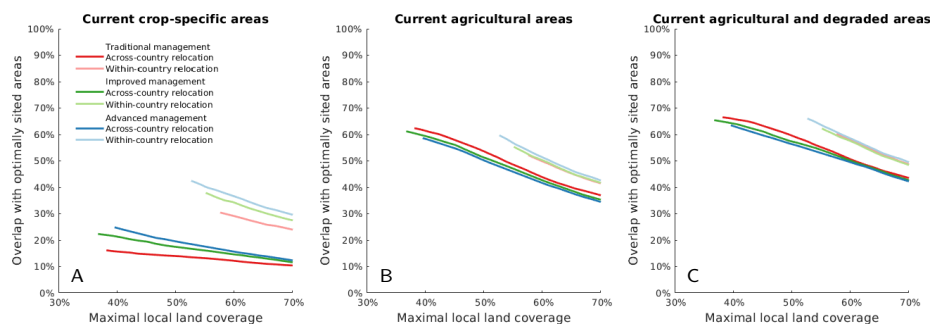
Whilst assisted regeneration and active restoration can accelerate carbon and biodiversity recovery<sup>29,66,30,61,71,72,33,62,73,65,52</sup>, passive regeneration is often the most effective strategy<sup>32</sup>.

**Acknowledgments** We thank Günther Fischer and Paul Donald for their advice and comments during the preparation of this manuscript. This work benefited from conversations with Fiona Sanderson and Catherine Tayleur (Royal Society for the Protection of Birds), Paul Donald (BirdLife International), Sharon Brooks (UN Environment World Conservation Monitoring Centre), and David Coomes, América P. Durán, Philip Martin and Ben Phalan (University of Cambridge) during a separate research project that was supported by a grant from the Cambridge Conservation Initiative Collaborative Fund (CCI-06-16-008).

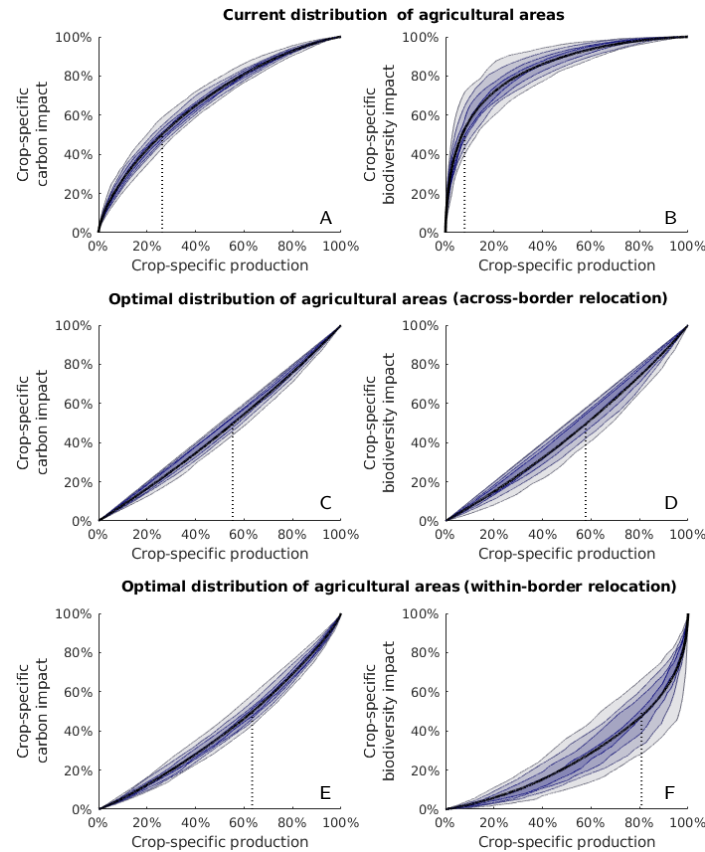
## Extended Data



**Extended Data Figure 1: (A)–(C)** Optimal and current growing locations of maize in the scenarios shown in Fig. 1A,C,E, respectively.



**Extended Data Figure 2:** Overlap between optimal agricultural areas (under the six specified scenarios) and **(A)** current agricultural land where the specific current and optimal crop types coincide (i.e. where current crops are already optimally sited), **(B)** current agricultural land (irrespective of the specific local land use), and **(C)** the combined area of current agricultural land and abandoned, wasted or idle agricultural land (using the global dataset of ref.<sup>74</sup>). All values are relative to the total area required in the appropriate optimal scenario. Plots correspond to the optimal impact trade-off shown in Fig. 1A–C.



**Extended Data Figure 3:** Cumulative production and environmental impact on current and optimal agricultural areas. **(A)–(B)** For each crop and grass, we sorted the relevant growing locations according to the local ratio of environmental impact to yield, from high to low. We then generated cumulative production-impact curves by traversing areas in that order. For comparability, the resulting 44 curves were converted to a relative scale, and are summarised by the 10–90th percentiles shown. Black lines represent means across crops. Dotted lines illustrate the level of production on the least agro-environmentally efficient growing areas that corresponds to 50% of the total crop-specific impact. The more concave the production-impact curve is, the larger are the relative environmental benefits of relocating even small portions of land. **(C)–(F)** Equivalent of **(A)–(B)** for optimally sited agricultural areas, but with growing locations ordered from low to high impact-to-yield ratio (i.e. the order in which new areas would ideally be established). Dotted lines thus show the maximum achievable level of production that causes 50% of the environmental impact. Data correspond to advanced management farming and the optimal impact trade-off shown in Fig. 1A.

	Current carbon impact of agriculture	Current biodiversity impact of agriculture	Potential national carbon impact reduction	Potential international carbon impact reduction	Potential national biodiversity impact reduction	Potential international biodiversity impact reduction
Alfalfa	21.9	8.3	77%	87%	83%	83%
Banana	8.3	23	64%	74%	82%	97%
Barley	69.5	18.5	78%	90%	87%	79%
Buckwheat	3.4	0.9	76%	80%	84%	83%
Cabbage	4.5	3.1	73%	90%	80%	93%
Cassava	30.7	46.1	77%	90%	90%	95%
Carrot	1.5	1.1	69%	87%	87%	88%
Chickpea	14.2	8.6	66%	92%	86%	96%
Cocoa	14.3	27.7	87%	92%	95%	99%
Coconut	26.2	86	68%	81%	87%	97%
Cocoyam	2.8	4.2	82%	88%	94%	97%
Coffee	22.2	72.4	85%	89%	96%	99%
Cotton	33.7	18.8	58%	80%	80%	79%
Cowpea	9.9	6.6	92%	94%	94%	94%
Flax	0.8	0.1	47%	70%	58%	39%
Green bean	1.6	2	89%	93%	97%	99%
Groundnut	30.7	21.9	80%	89%	89%	92%
Maize	202.4	225.4	76%	84%	92%	92%
Millet	30.2	18.6	91%	95%	92%	96%
Oat	17.9	4.1	68%	84%	79%	74%
Oil palm	24.1	42.6	58%	71%	81%	93%
Olive	9.9	3.1	87%	96%	95%	95%
Onion	4.3	3.6	78%	90%	91%	91%
Orange	6	9.4	74%	86%	89%	96%
Pasture grass	97.8	24.4	83%	95%	89%	86%
Pasture legume	6.3	1.9	49%	80%	85%	64%
Pea	8	3.2	58%	72%	73%	86%
Pigeon pea	6.9	3.7	91%	94%	87%	89%
Potato	31.2	17.6	77%	90%	84%	94%
Rape	34.9	11.1	73%	89%	79%	87%
Rice	308.6	305.1	62%	75%	84%	91%
Rye	15.2	1.2	75%	85%	77%	57%
Sorghum	39.6	33.2	92%	92%	94%	96%
Soybean	105	56	73%	75%	78%	85%
Sugarbeet	9.2	1.2	52%	71%	67%	51%
Sugarcane	36.1	67.2	20%	55%	62%	87%
Sunflower	23.2	8.2	76%	83%	83%	91%
Sweet potato	15.6	15.8	66%	88%	93%	92%
Tea	4.2	9.9	75%	85%	75%	97%
Tobacco	7.7	8.3	68%	86%	86%	96%
Tomato	5.1	4.1	61%	83%	81%	76%
Wheat	244.4	79.8	74%	86%	68%	88%
Yam	7.1	5.8	81%	85%	85%	92%
Pasture	1807.3	2808.9	48%	59%	75%	90%

**Extended Data Table 1:** List of crops considered in this study, their current global carbon and biodiversity impacts, and the potentials for reducing impacts under optimal within- and across-border relocation of areas. Reduction potentials are shown for advanced management farming and the optimal impact trade-off shown in Fig. 1A.

## References

- [1] Sala, O. E. *et al.* Global biodiversity scenarios for the year 2100. *science* **287**, 1770–1774 (2000).
- [2] Assessment, M. E. Ecosystems and human well-being: synthesis. millennium ecosystem assessment series. *World Resources Institute, Washington, DC* 155 (2005).
- [3] Vermeulen, S. J., Campbell, B. M. & Ingram, J. S. Climate Change and Food Systems. *Annual Review of Environment and Resources* **37**, 195–222 (2012).
- [4] Postel, S. L., Daily, G. C. & Ehrlich, P. R. Human Appropriation of Renewable Fresh Water. *Science* **271**, 785–788 (1996).
- [5] Revenga, C. World Water and Food to 2025: Dealing with Scarcity. By M. W. Rosegrant, X. Cai AND S. A. Cline. *Economica* **73**, 789–791 (2006).
- [6] Klein Goldewijk, K., Beusen, A., Doelman, J. & Stehfest, E. Anthropogenic land use estimates for the Holocene – HYDE 3.2. *Earth System Science Data* **9**, 927–953 (2017).
- [7] Foley, J. A. *et al.* Solutions for a cultivated planet. *Nature* **478**, 337–342 (2011).
- [8] Springmann, M. *et al.* Options for keeping the food system within environmental limits. *Nature* **562**, 519 (2018).
- [9] Sanderman, J., Hengl, T. & Fiske, G. J. Soil carbon debt of 12,000 years of human land use. *Proceedings of the National Academy of Sciences* **114**, 9575–9580 (2017).
- [10] West, P. C. *et al.* Trading carbon for food: Global comparison of carbon stocks vs. crop yields on agricultural land. *Proceedings of the National Academy of Sciences* **107**, 19645–19648 (2010).
- [11] Thornton, P. K. Livestock production: recent trends, future prospects. *Philosophical Transactions of the Royal Society of London B: Biological Sciences* **365**, 2853–2867 (2010).
- [12] Tilman, D. *et al.* Future threats to biodiversity and pathways to their prevention. *Nature* **546**, 73 (2017).
- [13] Poore, J. & Nemecek, T. Reducing food's environmental impacts through producers and consumers. *Science* **360**, 987–992 (2018).
- [14] Clay, J. Freeze the footprint of food (2011).

- [15] Myers, N. & Kent, J. New consumers: The influence of affluence on the environment. *Proceedings of the National Academy of Sciences* **100**, 4963–4968 (2003).
- [16] Tilman, D., Balzer, C., Hill, J. & Befort, B. L. Global food demand and the sustainable intensification of agriculture. *Proceedings of the National Academy of Sciences* **108**, 20260–20264 (2011).
- [17] Davis, K. F., Rulli, M. C., Seveso, A. & D'Odorico, P. Increased food production and reduced water use through optimized crop distribution. *Nature Geoscience* **10**, 919 (2017).
- [18] Jetz, W., Wilcove, D. S. & Dobson, A. P. Projected impacts of climate and land-use change on the global diversity of birds. *PLoS biology* **5**, e157 (2007).
- [19] Guerin, G. R. & Lowe, A. J. 'Sum of inverse range-sizes' (SIR), a biodiversity metric with many names and interpretations. *Biodiversity and Conservation* **24**, 2877–2882 (2015).
- [20] Albuquerque, F. & Beier, P. Rarity-weighted richness: A simple and reliable alternative to integer programming and heuristic algorithms for minimum set and maximum coverage problems in conservation planning. *PLoS One* **10**, e0119905 (2015).
- [21] Fischer, G. *et al.* Global Agro-ecological Zones (GAEZ v3. 0)-Model Documentation. Tech. Rep., IIASA, Laxenburg, Austria and FAO, Rome, Italy (2012). URL <http://www.fao.org/faostat/en/home>.
- [22] Le Quéré, C. *et al.* Global carbon budget 2018. *Earth System Science Data Discussions* **2018**, 1–3 (2018).
- [23] Phalan, B., Onial, M., Balmford, A. & Green, R. E. Reconciling food production and biodiversity conservation: land sharing and land sparing compared. *Science* **333**, 1289–1291 (2011).
- [24] Lamb, A. *et al.* The potential for land sparing to offset greenhouse gas emissions from agriculture. *Nature Climate Change* **6**, 488 (2016).
- [25] Ramankutty, N., Evan, A. T., Monfreda, C. & Foley, J. A. Farming the planet: 1. Geographic distribution of global agricultural lands in the year 2000. *Global Biogeochemical Cycles* **22** (2008).
- [26] Olivier, J. G., Janssens-Maenhout, G., Muntean, M. & Peters, J. A. Trends in global co2 emissions 2012 report (2016).



- [27] Lin, B. B. Resilience in agriculture through crop diversification: adaptive management for environmental change. *BioScience* **61**, 183–193 (2011).
- [28] Rosenzweig, C. *et al.* Assessing agricultural risks of climate change in the 21st century in a global gridded crop model intercomparison. *Proceedings of the National Academy of Sciences* **111**, 3268–3273 (2014).
- [29] Lamb, D., Erskine, P. D. & Parrotta, J. A. Restoration of degraded tropical forest landscapes. *Science* **310**, 1628–1632 (2005).
- [30] Chazdon, R. L. Beyond deforestation: restoring forests and ecosystem services on degraded lands. *Science* **320**, 1458–1460 (2008).
- [31] Bullock, J. M., Aronson, J., Newton, A. C., Pywell, R. F. & Rey-Benayas, J. M. Restoration of ecosystem services and biodiversity: conflicts and opportunities. *Trends in Ecology & Evolution* **26**, 541–549 (2011).
- [32] Crouzeilles, R. *et al.* Ecological restoration success is higher for natural regeneration than for active restoration in tropical forests. *Science Advances* **3**, e1701345 (2017).
- [33] Seddon, P. J., Griffiths, C. J., Soorae, P. S. & Armstrong, D. P. Reversing defaunation: restoring species in a changing world. *Science* **345**, 406–412 (2014).
- [34] Phalan, B. *et al.* How can higher-yield farming help to spare nature? *Science* **351**, 450–451 (2016).
- [35] MATLAB and Optimization Toolbox Release 2018a.
- [36] Monfreda, C., Ramankutty, N. & Foley, J. A. Farming the planet: 2. Geographic distribution of crop areas, yields, physiological types, and net primary production in the year 2000. *Global Biogeochemical Cycles* **22** (2008).
- [37] Houghton, R. A. The annual net flux of carbon to the atmosphere from changes in land use 1850–1990\*. *Tellus B* **51**, 298–313 (1999).
- [38] Guo, L. B. & Gifford, R. Soil carbon stocks and land use change: a meta analysis. *Global Change Biology* **8**, 345–360 (2002).
- [39] Murty, D., Kirschbaum, M. U., Mcmurtrie, R. E. & Mcgilvray, H. Does conversion of forest to agricultural land change soil carbon and nitrogen? A review of the literature. *Global Change Biology* **8**, 105–123 (2002).
- [40] Don, A., Schumacher, J. & Freibauer, A. Impact of tropical land-use change on soil organic carbon stocks – a meta-analysis. *Global Change Biology* **17**, 1658–1670 (2011).

- [41] Laganier, J., Angers, D. A. & Pare, D. Carbon accumulation in agricultural soils after afforestation: a meta-analysis. *Global Change Biology* **16**, 439–453 (2010).
- [42] Carlson, K. M. *et al.* Greenhouse gas emissions intensity of global croplands. *Nature Climate Change* **7**, 63–68 (2017).
- [43] Edwards-Jones, G. *et al.* Testing the assertion that 'local food is best': the challenges of an evidence-based approach. *Trends in Food Science & Technology* **19**, 265–274 (2008).
- [44] Coley, D., Howard, M. & Winter, M. Food miles: time for a re-think? *British Food Journal* **113**, 919–934 (2011).
- [45] Williams, P. *et al.* A comparison of richness hotspots, rarity hotspots, and complementary areas for conserving diversity of british birds. *Conservation Biology* **10**, 155–174 (1996).
- [46] Lamoreux, J. F. *et al.* Global tests of biodiversity concordance and the importance of endemism. *Nature* **440**, 212–214 (2006).
- [47] Roberts, C. M. *et al.* Marine biodiversity hotspots and conservation priorities for tropical reefs. *Science* **295**, 1280–1284 (2002).
- [48] International, B. & of the Birds of the World, H. Bird species distribution maps of the world v6.0 (2016).
- [49] NatureServe & IUCN. The IUCN Red List of Threatened Species v2016-1 (2016). URL <http://www.iucnredlist.org>.
- [50] Ramankutty, N. & Foley, J. A. Estimating historical changes in global land cover: Croplands from 1700 to 1992. *Global Biogeochemical Cycles* **13**, 997–1027 (1999).
- [51] Yang, Y., Luo, Y. & Finzi, A. C. Carbon and nitrogen dynamics during forest stand development: a global synthesis. *New Phytologist* **190**, 977–989 (2011).
- [52] Meli, P. *et al.* A global review of past land use, climate, and active vs. passive restoration effects on forest recovery. *PLoS One* **12**, e0171368 (2017).
- [53] Fu, Z. *et al.* Recovery time and state change of terrestrial carbon cycle after disturbance. *Environmental Research Letters* **12**, 104004 (2017).
- [54] Silver, W., Ostertag, R. & Lugo, A. The potential for carbon sequestration through reforestation of abandoned tropical agricultural and pasture lands. *Restoration Ecology* **8**, 394–407 (2000).

- [55] Gilroy, J. J. *et al.* Cheap carbon and biodiversity co-benefits from forest regeneration in a hotspot of endemism. *Nature Climate Change* **4**, 503–507 (2014).
- [56] Anderson-Teixeira, K. J., Wang, M. M., McGarvey, J. C. & LeBauer, D. S. Carbon dynamics of mature and regrowth tropical forests derived from a pantropical database (TropForC-db). *Global Change Biology* (2016).
- [57] Poorter, L. *et al.* Biomass resilience of Neotropical secondary forests. *Nature* **530**, 211–214 (2016).
- [58] Johnson, C. M., Zarin, D. J. & Johnson, A. H. Post-disturbance aboveground biomass accumulation in global secondary forests. *Ecology* **81**, 1395–1401 (2000).
- [59] Houghton, R. The annual net flux of carbon to the atmosphere from changes in land use 1850–1990. *Tellus B: Chemical and Physical Meteorology* **51**, 298–313 (1999).
- [60] Dunn, R. R. Recovery of faunal communities during tropical forest regeneration. *Conservation Biology* **18**, 302–309 (2004).
- [61] Jones, H. P. & Schmitz, O. J. Rapid recovery of damaged ecosystems. *PLoS One* **4**, e5653 (2009).
- [62] Curran, M., Hellweg, S. & Beck, J. Is there any empirical support for biodiversity offset policy? *Ecological Applications* **24**, 617–632 (2014).
- [63] Moreno-Mateos, D. *et al.* Anthropogenic ecosystem disturbance and the recovery debt. *Nature Communications* **8**, 14163 (2017).
- [64] Chazdon, R. L. *et al.* The potential for species conservation in tropical secondary forests. *Conservation Biology* **23**, 1406–1417 (2009).
- [65] Crouzeilles, R. *et al.* A global meta-analysis on the ecological drivers of forest restoration success. *Nature Communications* **7** (2016).
- [66] Bowen, M. E., McAlpine, C. A., House, A. P. & Smith, G. C. Regrowth forests on abandoned agricultural land: a review of their habitat values for recovering forest fauna. *Biological Conservation* **140**, 273–296 (2007).
- [67] Dent, D. H. & Wright, S. J. The future of tropical species in secondary forests: a quantitative review. *Biological Conservation* **142**, 2833–2843 (2009).
- [68] Hernández-Ordóñez, O., Urbina-Cardona, N. & Martínez-Ramos, M. Recovery of Amphibian and Reptile Assemblages During Old-Field Succession of Tropical Rain Forests. *Biotropica* **47**, 377–388 (2015).

- [69] Sayer, C., Bullock, J. & Martin, P. Dynamics of avian species and functional diversity in secondary tropical forests. *Biological Conservation* **211**, 1–9 (2017).
- [70] Benayas, J. M. R., Newton, A. C., Diaz, A. & Bullock, J. M. Enhancement of biodiversity and ecosystem services by ecological restoration: a meta-analysis. *Science* **325**, 1121–1124 (2009).
- [71] Holl, K. D. & Aide, T. M. When and where to actively restore ecosystems? *Forest Ecology and Management* **261**, 1558–1563 (2011).
- [72] Benayas, J. M. R. & Bullock, J. M. Restoration of biodiversity and ecosystem services on agricultural land. *Ecosystems* **15**, 883–899 (2012).
- [73] Crouzeilles, R. & Curran, M. Which landscape size best predicts the influence of forest cover on restoration success? a global meta-analysis on the scale of effect. *Journal of Applied Ecology* **53**, 440–448 (2016).
- [74] Cai, X., Zhang, X. & Wang, D. Land availability for biofuel production. *Environmental Science & Technology* **45**, 334–339 (2011).