

Reliability of Static and Dynamic Network Metrics in the Resting-State: A MEG-beamformed Connectivity Analysis

S. I. Dimitriadis^{1-6*}, B. Routley^{1,4}, D.Linden^{1,3-6}, K.D. Singh^{1,4}

¹Cardiff University Brain Research Imaging Centre, School of Psychology, Cardiff University, Cardiff, United Kingdom

²Neuroinformatics Group, Cardiff University Brain Research Imaging Centre, School of Psychology, Cardiff University, Cardiff, United Kingdom

³Division of Psychological Medicine and Clinical Neurosciences, School of Medicine, Cardiff University, Cardiff, United Kingdom

⁴School of Psychology, Cardiff University, Cardiff, United Kingdom

⁵Neuroscience and Mental Health Research Institute, Cardiff University, Cardiff, United Kingdom

⁶MRC Centre for Neuropsychiatric Genetics and Genomics, School of Medicine, Cardiff University, Cardiff, United Kingdom

Abstract. The resting activity of the brain can be described by so-called intrinsic connectivity networks (ICNs), which consist of spatially and temporally distributed, but functionally connected, nodes. The coordinated activity of the resting state can be explored via magnetoencephalography (MEG) by studying frequency-dependent functional brain networks at the source level. Although many algorithms for the analysis of brain connectivity have been proposed, the reliability of network metrics derived from both static and dynamic functional connectivity is still unknown. This is a particular problem for studies of associations between ICN metrics and personality variables or other traits, and for studies of differences between patient and control groups, which both depend critically on the reliability of the metrics used. A detailed investigation of the reliability of metrics derived from resting-state MEG repeat scans is therefore a prerequisite for the development of connectomic biomarkers.

Here, we first estimated both static (SFC) and dynamic functional connectivity (DFC) after beamforming source reconstruction using the imaginary part of the phase locking index (iPLV) and the correlation of the amplitude envelope (CorEnv). Using our approach, functional network microstates (FC μ states) were derived from the DFC and chronnectomics were computed from the evolution of FC μ states across experimental time. In both temporal scales, the reliability of network metrics (SFC), the FC μ states and the related chronnectomics were evaluated for every frequency band.

Chronnectomic parameters and FC μ states were generally more reliable than node-wise static network metrics. CorEnv-based network metrics were more reproducible at the static approach. This analysis encourages the analysis of MEG resting-state via DFC.

Keywords: MEG, resting-state, time-varying network analysis, chronnectomics, functional connectivity microstates, symbolic analysis, reproducibility

1. Introduction

The coordination of spontaneous activity can be characterized with functional connectivity (FC), which refers to statistical dependencies between the activity of distinct brain areas (Pereda et al., 2005) and has been linked to the efficiency of an individual's brain functioning (Baldassarre et al., 2012 ; Yamashita et al., 2015).

A functional connectivity graph (FCG) can be constructed by estimating the statistical dependencies between the brain activity of all the areas in a pair-wise fashion. An FCG represents statistical or causal relationships measured as cross-correlations, coherence, or information flow.

Neuroscientists first examined resting-state FC with functional magnetic resonance imaging (fMRI) by correlating blood oxygenation level-dependent (BOLD) signals (Biswal et al., 1995,2011,2012 ; van den Heuvel et al., 2009). After twenty years of using fMRI as a dominant neuroimaging tool, the community has succeeded in mapping brain areas to specific brain functions, creating an anatomical-functional atlas (Bandettini, 2012). Although fMRI is of high interest and a key modality to explore human brain function, ultra-slow activity described via BOLD signals is only an indirect measure of brain activity (Logothetis, 2008).

In the last few years, greater attention has been given to explore FC via electro-magneto-encephalography. Even though the spatial resolution of magnetoencephalography (MEG) is lower when compared to fMRI, MEG can capture the multiplexity of human brain activity by providing insight into the spectro-temporo-spatial dynamics of human brain activity. MEG-based FC provides us with a direct measure of neuromagnetic activity with a high temporal resolution.

Resting-state networks (RSNs) have been successfully extracted with MEG over the past few years using source-space FC (Brookes et al., 2011a,b; de Pasquale et al., 2010; Hall et al., 2013; Hipp et al., 2012; Luckhoo et al., 2012; Wens et al., 2014). Moreover, resting-state MEG FC has been proven to detect abnormal brain functioning in a variety of diseases, including Alzheimer's disease (Engels et al., 2015; Lo'pez et al., 2014,2017), multiple sclerosis (Tewarie et al., 2015), in schizophrenia (Bowyer et al., 2015), in dyslexia (Dimitriadis et al., 2013b,2015c), in mild cognitive impairment (Dimitriadis et al., 2015b) and in mild traumatic brain injury (Dunkley et al., 2015 ; Dimitriadis et al., 2015c, Antonanakis et al., 2016,2017).

Several studies have thus captured alterations of MEG parameters in the resting state in order to estimate FC in disease groups compared to controls. However, FC estimates at resting-state could be affected by subject's cognitive, emotional state and other scanning-related systematic differences. For that reason, it is unclear up to which level FC estimates are repeatable for an individual. Moreover, in large studies of hundreds of participants, there is a significant cost, both in financial resources and time, to scan all the subjects two or more times. To establish MEG as a clinically reliable neuroimaging tool that can distinguish disease from healthy populations, the reliability of FC patterns should be explored from repeat scans. Up to date, only a few studies accessed the test-retest reliability of MEG/electroencephalography (EEG) FC (Hardmeier et al., 2014; Jin et al., 2011 ; Garces et al., 2016) while only one study has quantified the test-retest reliability of FC estimates in the source-space MEG (Garces et al., 2016). Colclough et al., (2016) attempted to report the reliability of every edge-weighted connections with a high number of connectivity estimators but using a split-half strategy from a large pool of subjects. Practically, the results cannot be adopted as reliability of static network metrics since the analysis involved single MEG scan recordings. However, no study has ever explored the reliability of both static and dynamic networks at the source space in MEG.

In the present study, we investigated the test-retest reliability of both static and dynamic FC measures derived from MEG resting-state data. For that purpose, we computed whole-brain FC for 40 subjects who were scanned twice with a 1-week test-retest interval. For each subject and session, MEG-beamformed source activity was estimated and FC was computed between 90 brain areas. FC was estimated with the imaginary part of the phase locking index (iPLV) and the correlation of the amplitude envelope (CorEnv) in both static (SFC) and dynamic models (DFC) by adopting a sliding window approach (De Pasquale et al., 2010 ; Dimitriadis *et al.*, 2010a,2012a,2013a,2015a,2016a,2017). Afterwards, statistical and topological filtering schemes were applied to both SFC and DFC to reveal the true topology (Dimitriadis et al., 2017). For the SFC approach, we estimated well-known network metrics in a node-wise fashion and the reliability was accessed via correlation values between the two measurements and across the cohort. Graph-based reliability was assessed with a novel graph diffusion distance metric.

For the DFC approach, node-wise network metrics were estimated across experimental time. To explore spatio-temporally the derived network activity, we first designed a codebook of prototypical network microstates and then assigned each of the instantaneous connectivity patterns to the most

similar code symbol (e.g. functional connectivity graph – FCG) (Dimitriadis *et al.*, 2010a,2012a,2013a,b,2015a,2016a,b,2017). A codebook is a set of prototypical functional connectivity graphs (FCGs). In this way, we derive a unique symbolic time series from each individual where each symbol corresponds to one of the predefined prototypical functional connectivity microstates (FC μ states). The evolution of these symbol-patterns encapsulates significant state transitions. Furthermore, the evolution of these FC μ states can be seen as a first order Markovian Chain (MC) that can be modelled representing an individualized state transition model of resting-state FC μ states. Fractional occupancy of each FC μ state, transition rates of FC μ states and MC models are the key features to explore the reliability of chronnectome in MEG source space. The group-consistency of subject-specific FC μ states was further explored. The whole analysis of dynamic functional connectivity graphs and the definition of FC μ states have been described in previous paper (Dimitriadis *et al.*, 2013a).

Many techniques have already been proposed to summarize brain activity into short-lived transient brain states using the spectrum of neuromagnetic recordings (Vidaurre *et al.*, 2016) and also the band-limited amplitude envelopes of source reconstructed MEG data (Baker *et al.*, 2014 ; O’Neill *et al.*, 2015). In detail, Vidaurre *et al.*,(2016) proposed a combination of multivariate autoregressive model with hidden markovian modelling (MAR-HMM) in order to model the temporal, spectral and spatial properties of MEG reconstructed activity into very short-lived brain states. Similarly, Baker *et al.*, (2014) modelled resting-state source-reconstructed MEG activity with HMM into distinct spatio-temporal activation profiles called brain states. These brain states were linked to well-known anatomical brain areas. O’Neill *et al.*,(2015) mined MEG source activity from two tasks, a self-paced motor and a Sternberg working memory task. He used a sliding window canonical correlation analysis (CCA) to estimate the functional connectivity at each time-window and a k-means clustering to detect repeatable spatial patterns of connectivity that form transiently synchronising sub-networks (TSNs) or functional connectivity microstates. Here, we must underline the distinction of summarizing brain activity using the raw time series (ROIs x sliding windows ; Vidaurre *et al.*, 2016 ; Baker *et al.*, 2014) which is a 2D matrix and the dynamic functional brain networks (ROIs x ROIs x sliding windows) which is a 3D matrix (O’Neill *et al.*,2015). Currently the mapping and the relationship between raw activity and brain connectivity and also the relationship of microstates (raw activity) with functional connectivity microstates (dynamic graphs ; Allen *et al.*, 2012 ; Dimitriadis *et al.*, 2013a,b,2015a,2016a,b,2017) is still unknown. Further research is need to explore their mapping at resting-state and during tasks.

The proposed methodological scheme entails two distinct ways of analyzing dynamic functional connectivity patterns. These patterns are representative brain network topologies across subjects and brain rhythms and are directly linked to a brain state. The very first approaches in fMRI constitutes novel contributions to an emerging neuroimaging field called chronnectomics (Allen et al., 2012 ; Calhoun *et al.*, 2014). Previously, we reported the notion of FCμstates (Dimitriadis et al., 2013a) and the developmental trends in cognition (Dimitriadis et al., 2015a) using electroencephalographic recordings. The concept of chronnectome is the incorporation of a dynamic view of functional brain connectivity networks and the evolution of revisiting distinct spatio-temporal brain states (functional connectivity microstates - FCμstates). To the best of our knowledge, this study constitutes the first attempt to assess the test-retest reliability of Dynamic Functional Connectivity at the MEG source level.

Despite growing enthusiasm in the neuroscience community about the potential contribution of neuroimaging and especially brain networks in the designing of connectomic biomarkers for various brain diseases/disorders, many challenges remain open (Stam et al.,2014). At first level, it is more than significant to explore how reliable are network metrics at both temporal scales (static and dynamic) by analysing a group of control subjects with repeat scans (e.g. diffusion MRI : Dimitriadis et al., 2017d). Here, we assess evidence of the reliability of neuromagnetic (MEG) based functional connectomics to lead to potential clinically meaningful biomarker identification in target populations through the lens of the criteria used to evaluate clinical tests.

2. Materials and Methods

2.1 Subjects

40 healthy subjects (age 22.85 ± 3.74 years, 15 women and 25 men) underwent two resting-state MEG sessions (eyes open) with a 1-week test-retest interval. For each participant, scans were scheduled at the same day of the week and same time of the day. The duration of MEG resting-state was 5 mins for every participant. The study was approved by the Ethics Committee of the School of Psychology at Cardiff University, and participants provided informed and written consent.

2.2 MEG-MRI Recordings

Whole-head MEG recordings were made using a 275-channel CTF radial gradiometer system. An additional 29 reference channels were recorded for noise cancellation purposes and the primary sensors were analysed as synthetic third-order gradiometers (Vrba and Robinson, 2001). Two or three of the 275 channels were turned off due to excessive sensor noise (depending on time of acquisition). Subjects were seated upright in the magnetically shielded room. To achieve MRI/MEG co-registration, fiduciary markers were placed at fixed distances from three anatomical landmarks identifiable in the subject's anatomical MRI, and their locations were verified afterwards using high-resolution digital photographs. Head localisation was performed before and after each recording, and a trigger was sent to the acquisition computer at relevant stimulus events.

All datasets were either acquired at or down-sampled to 600 Hz, and filtered with a 1-Hz high-pass and a 200-Hz lowpass filter. The data were first whitened and reduced in dimensionality using principal component analysis with a threshold set to 95% of the total variance (Delorme and Makeig, 2004). The statistical values of kurtosis, Rényi entropy and skewness of each independent component were used to eliminate ocular and cardiac artifacts. Specifically, a component was deemed artifactual if more than 20% of its values after normalization to zero-mean and unit-variance were outside the range of $[-2, +2]$ (Delorme and Makeig, 2004; Escudero et al., 2011; Antonakakis et al., 2016). The artifact-free multichannel MEG resting-state recordings were then entered in the beamforming analysis (see next section).

Subjects further underwent an MRI session in which a 3T GE scanner with an 8-channel receive-only head RF coil T1-weighted 1-mm anatomical scan was acquired, using an inversion recovery spoiled gradient echo acquisition.

2.3 Beamforming

An atlas-based beamformer approach was adopted to project MEG data from the sensor level to source space independently for each brain rhythm. The frequency bands studied were: δ (0.5-4 Hz), θ (4-8 Hz), α_1 (8-10 Hz), α_2 (10-13 Hz), β_1 (13-20 Hz), β_2 (20-30 Hz), γ_1 (30-45 Hz), γ_2 (55-90 Hz). First, the coregistered MRI was spatially normalized to a template MRI using SPM8 (Weiskopf et al., 2011). The AAL

atlas was used to anatomically label the voxels, for each participant and session, in this template space (Tzourio-Mazoyer N, et al., 2002). The 90 cortical regions of interest (ROIs) were used for further analysis, as is common in recent studies (Hillebrand et al., 2016, Hunt et al., 2016). Next, neuronal activity in the atlas-labelled voxels was reconstructed using the LCMV source localization algorithm as implemented in Fieldtrip (Oostenveld et al., 2012).

The beamformer sequentially reconstructs the activity for each voxel in a predefined grid covering the entire brain (spacing 6 mm) by weighting the contribution of each MEG sensor to a voxel's time series - a procedure that creates the spatial filters that can then project sensor activity to the cortical activity. Each ROI in the atlas contains many voxels, and the number of voxels per ROI differs. To obtain a single representative time series for every ROI, we defined a functional-centroid ROI representative by functionally interpolating activity from the voxel time series, within each ROI, in a weighted fashion. Specifically, we estimated a functional connectivity map between every pair of source time series within each of the AALs ROIs (eq.1) using correlation (eq.2). We then estimated the connectivity strength of each voxel within the ROI by summing its connectivity values to other voxels within the same ROI (eq.3) and finally we normalized each strength by the sum of strengths (eq.4) to estimate a set of weights within the ROI that sum to a value of 1. Finally, we multiplied each voxel time series with their respective weights and we summed across them in order to get a representative time series for each ROI (eq.5). The whole procedure was applied independently to every quasi-stable temporal segment derived by the settings of temporal window and stepping criterion.

The following equations 1-5 demonstrated the steps for this functional interpolation.

$$ROI^{map} \in \mathfrak{R}^{voxels \times voxels}, Voxels \in \text{no of voxel timeseries within each ROI} (1)$$

$$S^{Voxels} = \sum_{k=1}^{Voxels} \sum_{l=k+1}^{Voxels} corr(ROI_k^{map}(t), ROI_l^{map}(t)), S^{Voxels} \in ROI \times ROI (2)$$

$$SS = \sum_{k=1}^{Voxels} corr(k, :) (3), S^{voxels} \in 1 \times ROI$$

$$W_k = \frac{SS}{\sum_{k=1}^{Voxels} SS} (4)$$

$$ROI^{activity} = \sum_{k=1}^{Voxels} ROI^{time series} * W_k (5)$$

The outline of the methodology is described in Fig.1. An exemplar of the representative bandpass filtered ROI based time series is given in Fig.1. Fig.2 illustrates the preprocessing steps described in equations 1 -5.

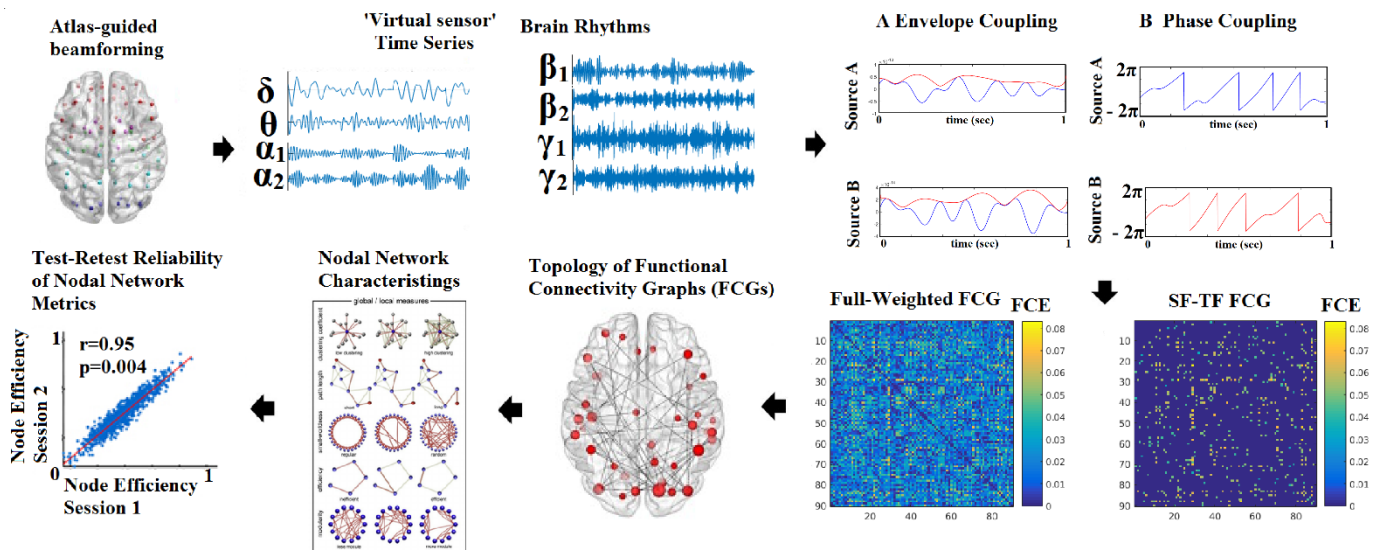


Figure 1. Outline of the methodology for accessing the reliability of network metrics derived from functional connectivity graphs (FCGs). (SF-Statistical Filtering, TF-Topological Filtering, FCE-Functional Connectivity Estimator).

Statistical and topologically filtering of the FCGs will be described in sections 2.7 and 2.8, correspondingly. One can understand how from a full-weighted FCG, a more sparse version is derived via the statistical and topological filtering approaches.

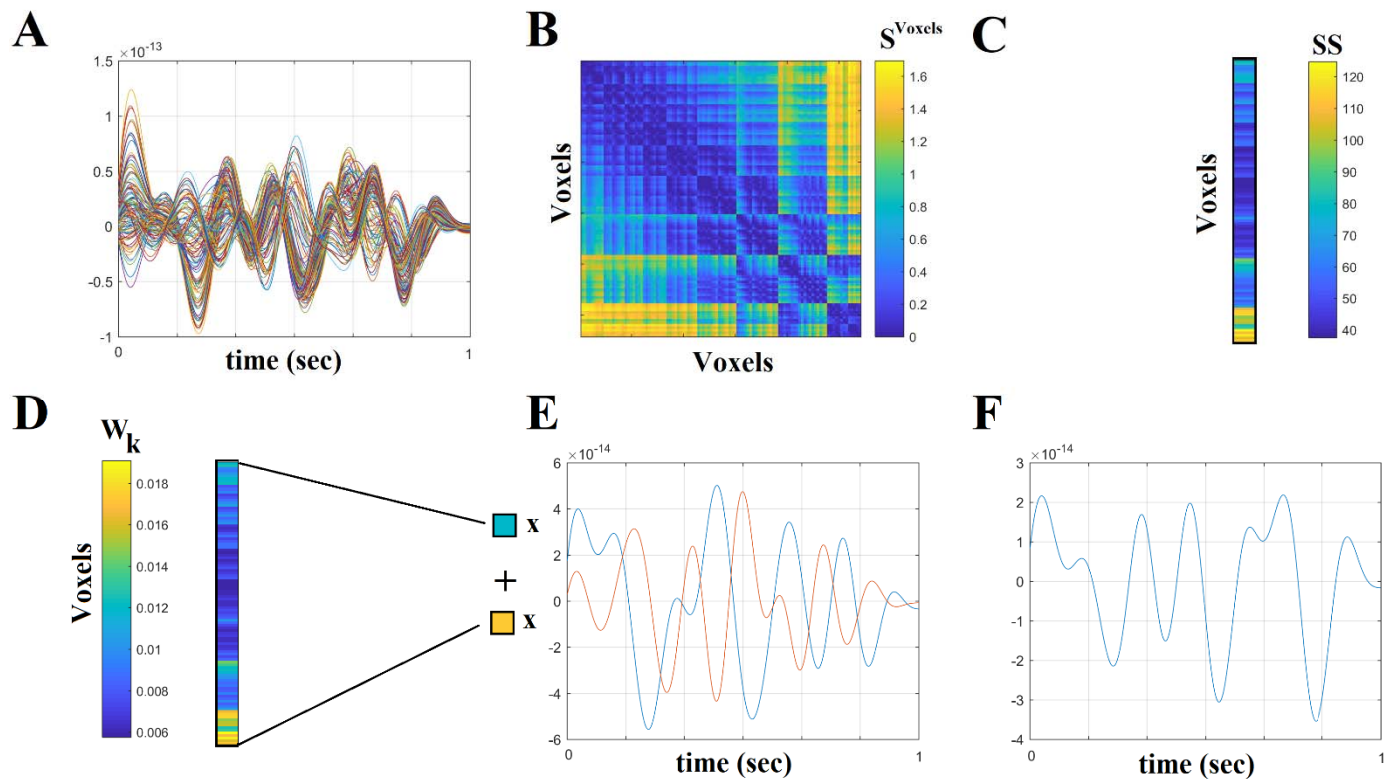


Figure 2. Step-by-step construction of the representative virtual sensor time series for each ROI.

A) Plot of 108 voxel time series from left precentral gyrus.

B) Distance correlation matrix S^{Voxels} derived by the pair-wise estimation of the 108 voxel time series

C) Summation of the columns of S^{Voxels} produced the vector SS

D) Normalization of vector SS that further produces W_k where its sum equals to 1.

E) Multiplying every voxel time series with the related weight from the W_k . In this example, we demonstrated this multiplication for the first and last voxel time series.

F) The reproduced voxel time series for left precentral gyrus ($ROI^{activity}$).

after summing the weighted versions of every voxel time series from E.

[Figure 1,2 around here]

2.3 Functional Connectivity

Here, functional connectivity was examined among the following 8 brain rhythms of the typical sub-bands of electrophysiological neural signals $\{\delta, \theta, \alpha_1, \alpha_2, \beta_1, \beta_2, \gamma_1, \gamma_2\}$, defined respectively within the ranges $\{0.5-4 \text{ Hz}; 4-8 \text{ Hz}; 8-10\text{Hz}; 10-13\text{Hz}; 13-20 \text{ Hz}; 20-30 \text{ Hz}; 30- 45\text{Hz}; 55 - 90 \text{ Hz}\}$. For both static and dynamic approach, we used two estimators: the correlation of the amplitude envelope (CorEnv) and the imaginary part of the phase locking value (iPLV).

2.4 Intra-Frequency Connectivity Estimators

Among the available connectivity estimators, we adopted one based on the imaginary part of phase-locking value (iPLV) (Lachaux *et al.*, 1999) and adjusted properly so as to extract time-resolved profiles of intra-frequency coupling from MEG multichannel recordings at resting state. The original PLV is defined as follows:

$$PLV = \frac{1}{T} \sum_{t=1}^T e^{i(\phi_k^{(t)}, \phi_l^{(t)})} \quad (6)$$

where k, l denote a pair of MEG sources and the imaginary part of PLV is equal to:

$$Im\{PLV\} = \frac{1}{T} \left| Im \left\{ \sum_{t=1}^T e^{i(\phi_k^{(t)}, \phi_l^{(t)})} \right\} \right| \quad (7)$$

The imaginary part of PLV (iPLV) investigates intra-frequency interactions without putative contributions from volume conductance. In general, the iPLV is mainly sensitive to non-zero-phase lags and for that reason is resistant to instantaneous self-interactions from volume conductance (Nolte, 2004). In contrast, it could be sensitive to phase changes that not necessarily imply a PLV oriented coupling.

Correlation of the Envelope coupling (CorEnv) is based upon correlation between the oscillatory envelopes of two frequency band limited sources (Brookes *et al.*, 2012). See Fig.1 for a schematic diagram

of phase and envelope based connectivity analyses based upon neural oscillations. Correlation of the Envelope coupling (CorEnv) is based upon correlation between the oscillatory envelopes of two band limited sources (A) while phase coupling searches for a constant phase lag between signals, in the example a difference of π (B). The time series for the estimation of CorEnv were orthogonalized between each other using the bivariate version of this correction for signal leakage effects (Colclough et al., 2016).

2.5 Static Functional Connectivity Analysis

Using both connectivity estimators, we estimated the fully-weighted (90x90) anatomical oriented FCG, one for each subject, recording session and frequency band. To construct the static FCG (SFCG), we incorporated in the analysis the whole 5 minutes of the recording session.

2.6 Dynamic iPLV estimates: the Time-Varying Integrated iPLV graph (^{TVI}iPLV graph)

The goal of the analytic procedures described in this section was to understand the repertoire of phase-to-phase interactions and their temporal evolution, while taking into account the quasi-instantaneous spatiotemporal distribution of iPLV estimates. This was achieved by computing one set of iPLV estimates within each of a series of sliding overlapping windows spanning the entire 5-min continuous MEG recording for eyes-open condition. The width of the temporal window and the stepping criterion were optimized for each frequency band separately using as objective criterion the reliability of transition dynamics between scan session 1 and 2 for each brain rhythm (Dimitriadis *et al.*, 2013a ; see section 2.13.1 and 2.15). The centre of the stepping window moved forwards every frequency-dependent (see section 2.15 and 3.1) for the optimization of the parameters) for every intra-frequency interactions and a new functional brain network is re-estimated between every pair of ‘swifting’ temporal segments of MEG activity, from two sources, leading to a “quasi-stable in time” static iPLV graph. In this manner, a series of 598 (for δ) to 2140 (for γ_2) iPLV graph estimates were computed for each frequency (8 within frequency) ,for each participant and for both repeat scans.

For each subject, a 4D tensor (frequencies bands (8) x slides (598 to 2140) x sources (90) x sources (90) ; see section 2.15 and 3.1) was created for each condition integrating subject-specific spatio-temporal phase interactions (Fig.3.A).

2.7 Surrogate Data Analysis of *iPLV/CorEnv* Estimates – Statistical Filtering of Brain Networks

To identify significant *iPLV/CorEnv* -interactions which were estimated for every pair of frequencies within and between all 90 sources, and at each successive sliding window (i.e. temporal segment), we employed a surrogate data analysis. Accordingly, we could determine (a) if a given *iPLV/CorEnv* value differed from what would be expected by chance alone, and (b) if a non-zero *iPLV/CorEnv* corresponded to non-spurious coupling.

For every temporal segment, sensor-pair and frequency, we tested the null hypothesis H_0 : "the observed *iPLV/CorEnv* value comes from the same distribution as the distribution of surrogate *iPLV/CorEnv* -values". One thousand surrogate time-series were generated by cutting at a single point at a random location the original time series and exchanging the two resulting time courses (Aru *et al.*, 2015). We restricted the range of the selected cutting point in a temporal window of width to 10 sec in the middle of the recording session (between 25 – 35 sec). This surrogate scheme was applied to the original whole time series and not to the signal-segment at every slide. Repeating this procedure leads to a set of surrogates with a minimal distortion of the original phase dynamics, while the non-stationarity of the brain activity is less destroyed compared to shuffling the time series or cutting and rebuilding it in more than one time points.

This procedure ensures that the real and surrogate indices both have the same statistical properties. For each data set, the surrogate *iPLV/CorEnv* (${}^s iPLV/{}^s CorEnv$) was then computed. We then determined a one-sided *p*-value for each *iPLV/CorEnv* value that corresponded to the likelihood that the observed value could belong to the surrogate distribution. This was done by directly estimating the proportion of "surrogate" ${}^s iPLV/{}^s CorEnv$ that were higher than the observed *iPLV/CorEnv*. The *p*-value reflected the statistical significance of the observed *iPLV/CorEnv* -level (a very low value revealed that it could not have appeared from processes with no iPLV coupling).

At a second level, we applied the FDR method (Benjamini, Hochberg, 1995) to control for multiple comparisons within each snapshot of the dynamic graph (FCG – a 90 x 90 matrix with tabulated p-values) with the expected fraction of false positives set to $q \leq 0.01$. Finally, for each subject the resulting ${}^{TV}iPLV/{}^{TV}CorEnv$ profiles constituted of two 3D arrays of size [598 to 2140 for δ to γ_2 (time windows) x 90 (sources) x 90 (sources)] with a value of 0 indicated a non-significant $iPLV/CorEnv$ value.

The aforementioned statistical filtering approach was applied independently for each frequency band, session, subject and connectivity estimator for both static and dynamic functional connectivity graphs.

2.8 A data-driven Topological Filtering Scheme based on Orthogonal Minimal Spanning Trees (OMSTs)

As well as the statistical filtering approach, it is important to adopt a data-driven topological filtering approach in order to reveal the backbone of the network topology over the increment of information flow.

Recently, it was proved that MST is an unbiased method that yields reliable network metrics (Tewarie *et al.*, 2015). In this study, we adopt a variant of this topological filtering scheme called orthogonal minimal spanning trees (OMST), which leads to a better sampling of brain networks, preserving the advantage of MST, that connects the whole network with minimum cost without introducing cycles and without differentiated strong from weak connections compared to the absolute threshold or the density threshold (Dimitriadis *et al.*, 2017a,b). MST is too sparse to capture the ‘true’ network and for that reason leading to the selection of N-1 connections where N denotes the number of nodes. We introduced OMST which samples the weights of a brain network via the notion of MST and under the optimization of the global information flow under the constraint of the total Cost of preserving the functional connections (Dimitriadis *et al.*, 2017).

Our criterion for topologically filtering a given brain network is based on the maximum value of the following quality formula:

$$J_{GCE}^{OMSTs} = GE - Cost \quad (8)$$

We applied the data-driven topological filtering scheme based on OMST at every static and quasi-instantaneous FCG from the dynamic DFCG. After statistical and topological filtering approaches applied to both SFCG and the DFCG, we estimated network metrics at the node/source level.

Fig.1 demonstrates an example of a full-weighted FCG after applying both statistical and topological filtering approach. Our algorithm was validated over all the existing thresholding schemes with a large EEG dataset over brain fingerprinting and with a multi-scan fMRI dataset over reliability of nodal network metrics (Dimitriadis et al., 2017a). Additionally, we demonstrated the importance of a data-driven topological filtering technique in functional neuroimaging by using OMST in a multi-group study with MEG resting-state recordings (Dimitriadis et al., 2017b). The MATLAB code of the OMST method and also of the majority of existing filtering methods can be downloaded from the [:https://github.com/stdimitr/topological filtering networks](https://github.com/stdimitr/topological_filtering_networks) & [researchgate https://www.researchgate.net/profile/Stavros_Dimitriadis](https://www.researchgate.net/profile/Stavros_Dimitriadis)

2.9 Graph Diffusion Distance Metric for Brain Networks

In order to assess group and scan sessions differences in the topologically filtered FCG at the single-case level, we computed the Graph Diffusion Distance as a distance metric (Fouss et al., 2012; Hammond et al., 2013) from the OMST-derived final Functional Connectivity Graphs (FCG). The graph laplacian operator of each subject-specific FCG was defined as $L = D - FCG$, where D is a diagonal degree matrix related to FCG. This method entails modeling hypothetical patterns of information flow among sources based on each observed (static) SFCG. The diffusion process on the person-specific FCG was allowed for a set time t ; the quantity that underwent diffusion at each time point is represented by the time-varying vector $u(t) \in \mathfrak{R}^N$. Thus, for a pair of sources i and j , the quantity $FCG_{ij}(u_i(t) - u_j(t))$ represents the hypothetical flow of information from i to j via the edges that connect them (both directly and indirectly). Summing all these hypothetical interactions for each sensor leads to $u'_j(t) = \sum_i FCG_{ij}(u_i(t) - u_j(t))$, which can be written as:

$$u^i(t) = -Lu(t) \quad (9)$$

where L is the graph laplacian of FCG. At time $t = 0$ Equation 9 has the analytic solution: $u(t) = \exp(-tL)u^{(0)}$. Here $\exp(-tL)$ is a $N \times N$ matrix function of t , known as Laplacian exponential diffusion kernel (Fouss et al., 2012), and $u^{(0)} = e_j$, where $e_j \in \mathfrak{R}^N$ is the unit vector with all zeros except in the j^{th} component. Running the diffusion process through time t produced the diffusion pattern $\exp(-tL)e_j$ which corresponds to the j^{th} column of $\exp(-tL)$.

Next, a metric of dissimilarity between every possible pair of person-specific diffusion-kernelized FCGs (FCG_1, FCG_2) was computed in the form of the graph diffusion distance $d_{gdd}(t)$. The higher the value of $d_{gdd}(t)$ between two graphs, the more distinct is their network topology as well as the corresponding, hypothetical information flow. The columns of the Laplacian exponential kernels, $\exp(-tL_1)$ and $\exp(-tL_2)$, describe distinct diffusion patterns, centered at two corresponding sources within each FCG. The $d_{gdd}(t)$ function is searching for a diffusion time t that maximizes the Frobenius norm of the sum of squared differences between these patterns, summed over all sources, and is computed as:

$$d_{gdd}(t) = \left\| \exp(-tL_1) - \exp(-tL_2) \right\|_F^2 \quad (10)$$

where $\left\| \cdot \right\|_F$ is the Frobenius norm.

Given the spectral decomposition $L=V\Lambda V'$, the laplacian exponential can be estimated via

$$\exp(-tL) = V \exp(-t\Lambda) V' \quad (11)$$

where for Λ , $\exp(-t\Lambda)$ is diagonal to the i^{th} entry given by $e^{-t\Lambda_{i,i}}$. We computed $d_{gdd}(FCG_1, FCG_2)$ by first diagonalizing L_1 and L_2 and then applying equations (9) and (10) to estimate $d_{gdd}(t)$ for each time point t of the diffusion process. In this manner, a single dissimilarity value was computed for each pair of participants based on their individual characteristic FCGs. For further details see (Hammond et al., 2013). The GDD metric can be downloaded from :

<https://github.com/stdimitr/multi-group-analysis-OMST-GDD>

2.10 Static Network Metrics

After applying the statistical and topological filtering approach, we estimated the global efficiency for each node in static approach. The static approach leads to 90 (sources) values for each network, metric, frequency band and session per subject. We adopted complementary features that measure the importance of each node in segregation, integration and the information flow within a weighted functional brain network (Dimitriadis *et al.*, 2010a,b,2013a,b,2015a). In this study, we estimated four basic network metrics, the global and local efficiency, the strength of each node and the mean first passage time based on random walks (Goni *et al.*, 2013).

Network global efficiency (GE) reflects the overall efficiency of parallel information transfer within the entire set of 90 sources and was estimated as the average sourcespecific GE value over all sources using the following formula (Latora and Marchiori, 2001):

$$GE = \frac{1}{N(N-1)} \sum_{i \neq j} \frac{1}{d_{ij}}$$

Where d denotes the shortest path length from i to j .

Local efficiency (LE) indicates how well the subgraphs exchange information when a particular node is eliminated (Achard and Bullmore, 2007). Specifically, each node is assigned the shortest path length within its subgraph

$$LE_i = \frac{1}{(N-1)(N-2)} \sum_{j \neq k} \frac{1}{d_{jk}^i}$$

where k corresponds to the total number of spatial (first level neighbors) neighbors of the i -th node, while d denotes shortest path length.

The **strength** is equal to the total sum of the weights of the connections of each node.

As a fourth candidate network metric, we adopted the mean first passage time (MFPT). Starting a random walk process on a brain network, an analytic expression can give the probability that a single particle departing from a node i arrives at node j for the first time within exactly L steps (Wang and Pei,2008). This criterion can be applied for each MEG source pair by setting L to their shortest-path-

length. We denote with $\Pi_G = [\pi_{ij}]$ the $n \times n$ symmetric matrix containing, for each pair of nodes, the probability of a single particle going from node i to node j via the shortest path. Each entry π_{ij} can be

computed as
$$\pi_{ij} = 1 - \sum_{v=1}^n [B_j^{p_{ij}}]_{iv}, i \neq j \quad (14)$$

where matrix B_j is the transition matrix P introduced above, but with all zeros in the j -th column, i.e. with j acting as an absorbing state (Wang and Pei, 2008). Evaluating shortest-path-lengths ensures that $\forall i, j \quad \pi_{ij} > 0$. By considering one particle here, the average shortest-path probability of a graph is defined as

$$\Pi_{spl} = \frac{\sum_i \sum_j \pi_{ij}}{n(n-1)}, i \neq j. \quad (15)$$

The derived 2D matrix based on nodal NMTS of GE, LE, MFPT and strength will be modelled with the proposed method that is described in the following section.

2.11 Modelling of Dynamic Functional Connectivity Graphs (DFCG) as a 3D Tensor

This subsection serves as a brief introduction to our symbolization scheme, presented in greater details elsewhere (Dimitriadis *et al.*, 2012a,b,2013a,b). The dynamic functional connectivity patterns can be modeled as prototypical functional connectivity microstates (FCμstates). In a recent study, we demonstrated a better modeling of dynamic functional connectivity graphs (DFCG) based on a vector quantization approach (Dimitriadis *et al.*, 2013). In our previous work (Dimitriadis *et al.*, 2013a,b,2015a), we used the neural-gas algorithm (Martinetz *et al.*, 1993) to learn the 2D matrix (vectorized version of 2D matrix x time) leading to a codebook of k prototypical functional connectivity states (i.e. FCμstates). This algorithm is an artificial neural network model, which converges efficiently to a small number k of codebook vectors, using a stochastic gradient descent procedure with a soft-max adaptation rule that minimizes the average distortion error (Martinetz *et al.*, 1993). In a recent study, we adopted non-negative matrix factorization (NNMF) as an appropriate learning algorithm of the 2D vectorized version of a dynamic functional brain network (Marimpis *et al.*, 2016).

In our previous study where we first demonstrated how to model dynamic functional connectivity graph (dFCG) (Dimitriadis et al., 2013a), we vectorised the upper triangular of each of the quasi-static FCGs building a 2D matrix where the 1st dimension is the number of temporal segments and the 2nd the vectorised version of a static FCG. The final outcome of this approach is to define the so-called functional connectivity microstates (FC μ states). In a next study, we moved one step further by estimating node-wise global efficiency as the best descriptor to characterize the brain activity. The final outcome of the modelling using the same methodology of neural-gas algorithm was task-based network microstates (Dimitriadis et al., 2015a). Here, the vectorised version of a 90x90 FCG produces a long vector of 4005 values while the number of temporal segments ranged from 598 to 2140 which caused the so-called curse of dimensionality where the number of number of the temporal segment over which the modelling will learn the brain states is much smaller compared to the vectorised snapshot of FCG. Simultaneously, the vectorised notion of a brain network didn't maintain the inherent format of a functional brain network which is a 2D matrix, a tensor.

The outline of this procedure is illustrated in Fig.3. In Fig.3.A, a characteristic bandpass filtered time series for each of the studying frequency band is estimated from each ROI. Here, instead of vectorising the upper triangular of an undirected FCG, we used the statistical and topological filtering FCG on its inherent format which is a 2D tensor. In the case of dynamic networks, the dimension is a 3D tensor where the 3rd dimension is the time. Fig.3B illustrates a few snapshots of the dFCG for δ frequency of the first subject. At the next level, we estimated the laplacian matrix of each quasi-static FCG. Given a FCG, the laplacian matrix is given by :

$$L = D - A, \quad (16)$$

where D is the degree matrix and A is the FCG.

Fig.3C demonstrates the laplacian matrix of the FCG in Fig.3B. In the main diagonal, the degree of each node is tabulated. Afterward, we applied an eigenanalysis for each of these laplacian matrixes and the eigenvalues of this procedure describes the synchronizability of the original FCG. Fig.3d illustrates for the 1st minute the eigenvalues for each quasi-static FCG. One can easily detect the abrupt transition between the brain states. Here, neural-gas algorithm was applied on the 2D matrix presented in Fig.3D after first concatenated across subjects independently for each frequency band and scan session. The main scope of this codebook learning algorithm is to define FC μ states.

By estimating the reconstruction error E between the original 3D graphs and the one reconstructed via the k FC μ states assigned to each snapshot of the DFCG for each predefined threshold, we can detect the optimal threshold T for each case. In this work, the criterion of the reconstruction error E was set less than 4%. Practically for all the frequency bands and in both connectivity estimators, the reconstruction error E was less than 2%. The selected threshold was detected based on the plateau by plotting of reconstruction error E versus the threshold T .

In this way, the richness of information contained in the dynamic connectivity patterns is represented, by a partition matrix U , with elements u_{ij} indicating the assignment of input connectivity patterns to code vectors. Following the inverse procedure, we can rebuild a given time series from the k FC μ states, with a small reconstruction error E . The selection of parameter k reflects the trade-off between fidelity and compression level. As a consequence, the symbolic time series closely follows the underlying functional connectivity dynamics. The derived symbolic times series that keep the information of network FC μ states (nFC μ states) are called hereafter as STS^{L-EIGEN} (L:Laplacian – Eigen:Eigenanalysis). Fig.3E tabulates the correlation of the eigenvalues between every pair of temporal segments while in Fig.3F, the matrix in Fig.3E was reordered such as the FC μ states to be revealed via the neural-gas algorithm. The network topology of the extracted FC μ states is illustrated in Fig.3G. From, Fig.3F, one can understand that the two FC μ states describe the DFCG of this subject.

An exemplar of prototypical FC μ states is illustrated in Fig.3.G. The outcome of this clustering procedure is also to extract a symbolic time series per subject, repeat scan and frequency that describes the transition of brain activity between the extracted brain states (FC μ states ; Fig.3.D). The transition probability P for this example and for the two FC μ states is illustrated with a classical figure for Markovian Chain. The self-arrows refer to the percentage of sliding windows where the brain stays stable in a FC μ state without any transition while the directed arrow gives the percentage of transition from one FC μ state to the other. This symbolic time series can be seen as a Markovian chain where these switching between 'quasi-static' FC μ states can be modeled as a finite Markov chain (Dimitriadis et al., 2013a,b,2015a ; O'-Neill et al.,2015 ; Vidaurre et al., 2016). One can clearly understand that human brain demonstrates a preferred transition from FC μ states² to FC μ states¹ (off-diagonal lines of the TP) compared to the opposite direction (Fig.3.H). The sketch of the markovian chain and the colored TP matrix can reveal the aforementioned trend of preferred direction FC μ states² to FC μ states¹.

From the symbolic timeseries, specific metrics tailored to the dynamic evolution of FCstates were estimated (see next section) and their reliability was assessed via the correlation coefficient between scan session 1 and scan session 2. The whole approach was repeated independently for each frequency band and connectivity estimator by integrating subject and scan-based DFCG.

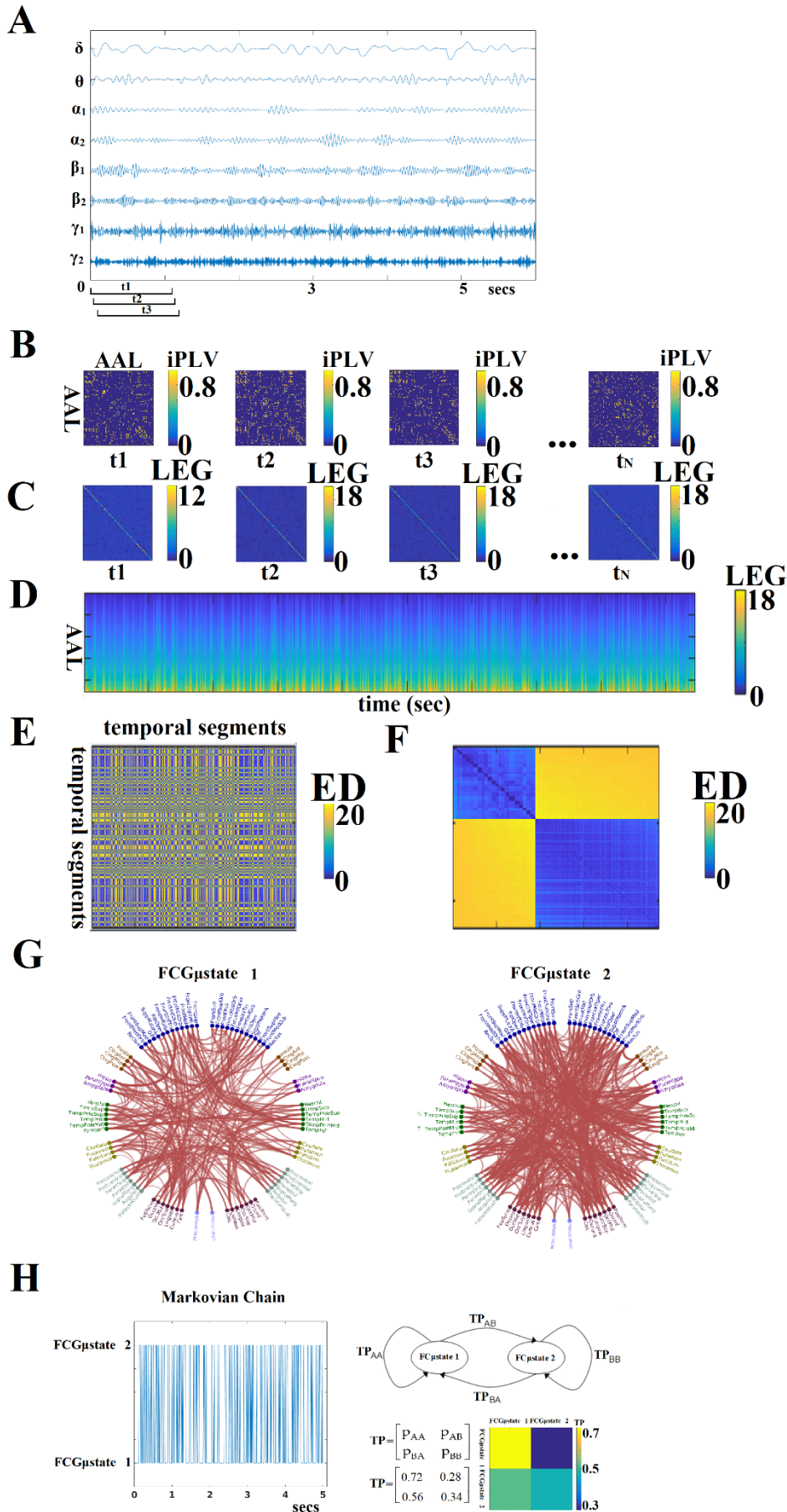


Fig.3. From dynamic functional connectivity graphs (DFCG) to FC μ states.

- A) A characteristic bandpass filtered time series for each of the studying frequency band is given from a ROI.
- B) Topologies of snapshots of DFCG from the three first temporal segments from δ band of subject 1 in order to make clear the estimation of FCG in a dynamic fashion. The first three brain networks refer to the first three temporal segments demonstrated in A).
These functional brain networks were statistically and topologically filtered as described in sections 2.7 and 2.8. The t_N refers to the last temporal segment of the DFCG.
- C) Laplacian matrices for a few snapshots of DFCG
- D) The dynamic evolution of the eigenvalues of the laplacian matrices for each frequency band. An example for δ frequency band.
- E) Euclidean Distance matrix of the laplacian eigenvalues between every pair of temporal segments
- F) Reordering the correlation matrix in E to enhance the visualization of the two clusters – FC μ states illustrated in G
- G) The prototypical FC μ states in a circular visualization
- H) The outcome of this procedure is a symbolic time series that can be seen as a Markovian Chain that expresses the evolution of FC μ states across experimental time. The transition probabilities (TP) of this Markovian Chain based is illustrated in the 2 x 2 colored figure. One can understand that human brain demonstrates a preferred transition from FC μ states² to FC μ states¹ compared to the opposite direction (see 2D colormap). The chronnectomics were derived from this symbolic time series.

(ED:Euclidean Distance, LEG:Laplacian EiGenvalues, ED:Euclidean Distance,
AAL:Automated Anatomical Labeling
LEG:Laplacian EiGenvalues)

[Figure 3 around here]

2.12 Characterization of time-varying connectivity

Once the integrated DFCG is formed and it is modelled via the combination of neural-gas and graph diffusion distance scheme (N-GAS^{GDD}), relevant features can be extracted from the data based on the state-transition states. These features are called chronnectomics (chronos – Greek word for time and connectomics for network metrics) which are described in the following section.

2.13 Chronnectomics

The following chronnectomics (dynamic network metrics) will be estimated on the STS^{L-EIGEN} which expresses the fluctuation of the FC μ states.

2.13.1 State Transition Rate

Based on the state transition vectors STS^{L-EIGEN} as demonstrated in Fig.3.A, we estimated the transition rate (TR) for every pair of states as followed:

$$TR = \frac{\text{no of transitions}}{\text{slides} - 1} \quad (16)$$

Where slides denote the number of temporal segments using the sliding window approach.

TR yields higher values for increased numbers of ‘jumps’ of the brain between the derived brain states over consecutive time windows. This approach leads to one feature per participant. Finally, we transformed the transition matrix (TM) into a probability matrix by dividing the TM by the sum of totally observed transitions over all possible pairwise states. TR was also estimated between every possible pair of states leading to an 8x8 TR matrix and extra 64 features per subject and condition.

2.13.2 Occupancy Times of the nFC μ states

Complementary to the aforementioned chronnectomics, we estimated also the occupancy time (OC) of each FC μ states as the percentage of its occurrence across the experimental time. OC was estimated from STS^{L-EIGEN} as follows:

$$OC(k) = \frac{\text{Frequency of Occurance}}{\text{slides}} \quad (17)$$

where k denotes the FC μ states.

2.14 Reliability of Static Network Metrics and Chronnectomics

The reliability of static node-wise network metrics and the chronnectomics was assessed with the correlation coefficient between forty values derived from scan session 1 and forty values from scan session 2 for each frequency band, condition and connectivity estimator (see Fig.1-3).

2.15 Optimizing the Width of the Time-Window and the Stepping Criterion

We optimized both the width of the time-window and the step criteria for the sliding-window approach based on the maximization of the reliability of TR. The reliability was estimated based on the correlation coefficient of the TR across the whole group between scan session 1 and 2. The whole procedure was followed independently for each brain rhythm. The settings for the width of temporal window and the step were defined as a percentage of the cycles of the studying frequencies : {from 1 up to 10 cycles with step equals to 0.5 cycle} for the width of the temporal window and {from 0.1 cycles to 2 cycles with step equals to 0.1 cycle} for the step.

To avoid overfitting of both TR and OT since, we used TR for both the optimization of the width of the temporal window and the stepping criterion, we used the optimized parameters in an external second repeat scan dataset for further evaluation.

3. Results

3.1 Tuning Parameters for Dynamic Functional Connectivity Analysis

The optimization of the temporal window and the stepping criterion for each brain rhythm reveals a nice trend for dynamic functional connectivity analysis. The width of the temporal window increased from δ to γ_2 while the stepping criterion decreased in both connectivity estimators.

Table 1. Optimization of the width of temporal window and the stepping criterion per frequency band and for both connectivity estimators

		δ	θ	α_1	α_2	β_1	β_2	γ_1	γ_2
iPLV	{time window ,step}	{2,0.5}	{3,0.4}	{4,0.4}	{4,0.4}	{6,0.3}	{6.5,0.3}	{8,0.2}	{8.5,0.2}
CorEnv	{time window ,step}	{2,0.5}	{3,0.4}	{5,0.4}	{5,0.4}	{7,0.3}	{7,0.3}	{8,0.3}	{9,0.2}

3.2 Common Projection Space of Frequency-Dependent Static FCG

To demonstrate the (dis)similarities between sessions and subjects of the frequency-dependent static FCG, we constructed a distance matrix of dimensions 80 x 80 (subjects x sessions) using the graph diffusion distance metric. Then, we applied multidimensional scaling (MDS) to project the distance matrix into a common 2D feature space. Using a different coloured circle for each scanning session (blue for session 1 and red for session 2) and connecting both of them with a black line for each subject, we further enhanced the (dis)similarities of the static FCGs. Figure 4 – 5 illustrate these FCG-based projections for static FCG^{iPLV} and FCG^{CorEnv} correspondingly. In Fig.4G one can detect a few subjects with high reliable static FCG between the two scan sessions and also subject-specific network topologies that occupied an isolated subarea in the common projection FCG space. The stress index estimated via the MDS approach

was low and the relationship of the 80 FCGs in the original 80x80 matrix is preserved in the projected 2D space.

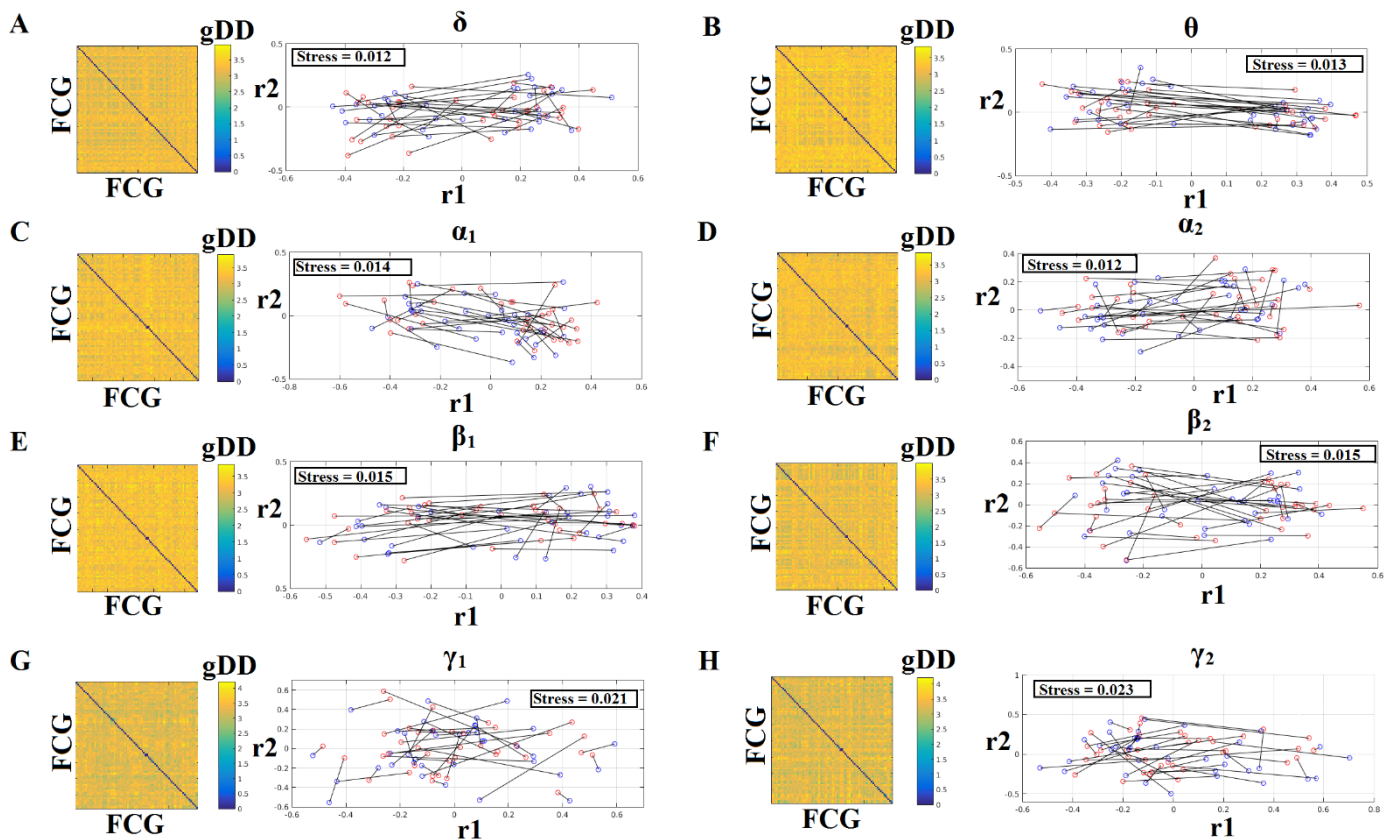


Figure 4. Multidimensional Scaling Projection of Frequency-Dependent Static Functional Connectivity Graphs (FCG^{iPLV}) in a Common Feature Space.

(A-H : $\delta - \gamma_2$) Each subplot illustrates the (dis)similarities of static FCGs across scanning sessions and subjects. The 2D matrix demonstrates the (dis)similarities of the static FCGs across the subjects and both repeat scans. Scanning sessions were coded with blue and red circles correspondingly and a black line connects the FCG of each subject between the two scanning sessions. With this representation one can read out the similarity of a static FCG between two scanning sessions and participants.

Stress expresses the loss of information expressed in the projected Frequency-Dependent Static Functional Connectivity Graphs in 2D feature space from an original 80D space. The low stress values mean that the relationship of the 80 FCGs in the original 80x80 matrix is preserved in the projected 2D space. $R_{1,2}$ refer to the 2D projected space of the 80 FCGs.

(FCG : Functional Connectivity Graph ; gDD:graph Diffusion Distance)

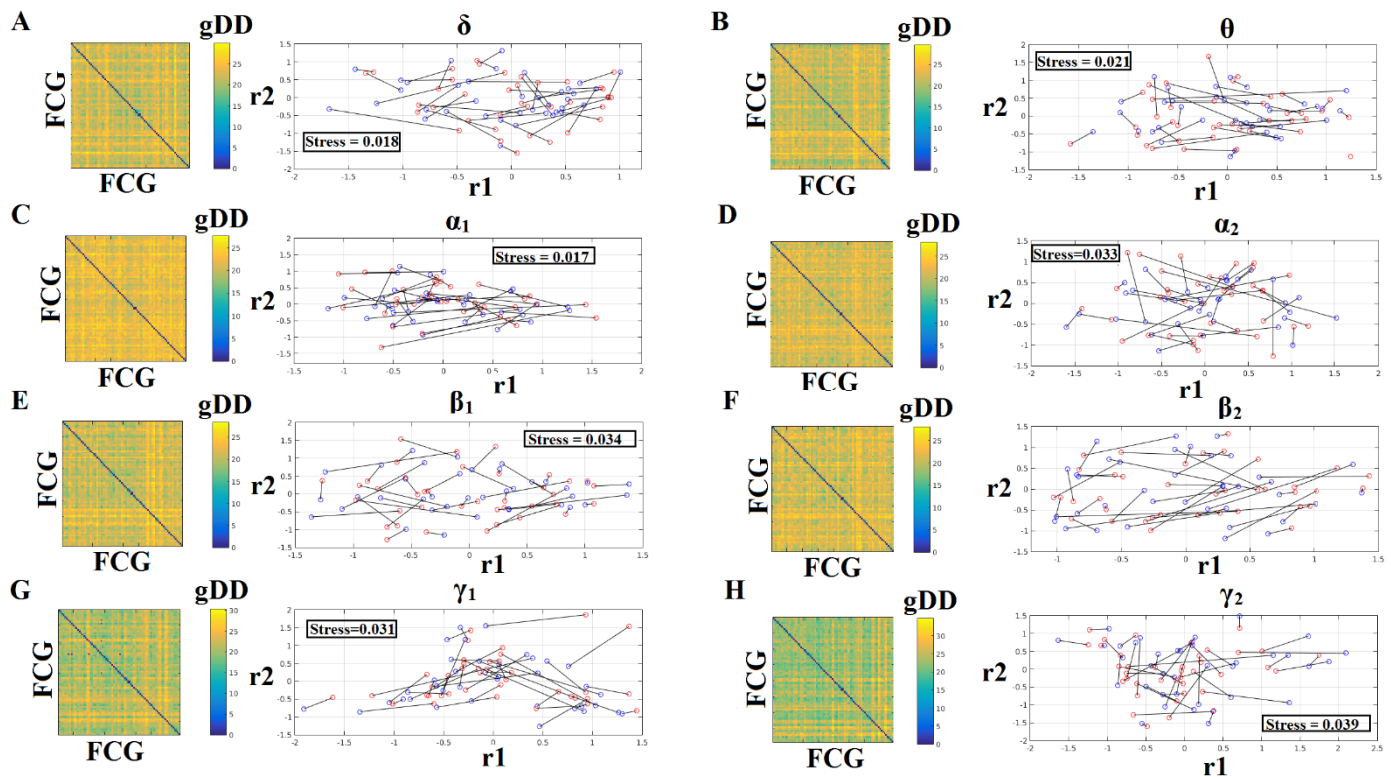


Figure 5. Multidimensional Scaling Projection of Frequency-Dependent Static Functional Connectivity Graphs (FCG^{CorEnv}) in a Common Feature Space.

(A-H : $\delta - \gamma_2$) Each subplot illustrates the (dis)similarities of static FCGs across scanning sessions and subjects. The 2D matrix demonstrates the (dis)similarities of the static FCGs across the subjects and both repeat scans. Scanning sessions were coded with blue and red circles correspondingly and a black line connects the FCG of each subject between the two scanning sessions. With this representation one can read out the similarity of a static FCG between two scanning sessions and participants.

Stress expresses the loss of information expressed in the projected Frequency-Dependent Static Functional Connectivity Graphs in 2D feature space from an original 80D space. The low stress values mean that the relationship of the 80 FCGs in the original 80x80 matrix is preserved in the projected 2D space. $R_{1,2}$ refer to the 2D projected space of the 80 FCGs.

(FCG : Functional Connectivity Graph ; gDD:graph Diffusion Distance)

[Figure 4 and 5 around here]

3.3 Reliability of Static Network Metrics

Fig. 6 and 7 demonstrate the correlation coefficients for each node-wise network metric between the two scanning sessions for every frequency-dependent static FCG. From the visual comparison of both figures one can clearly reveal that the correlation values are higher for CorEnv compared to iPLV. Applying Wilcoxon Rank-Sum Test for every frequency and network metric between the 90 correlation values, we detected statistical significant differences in every case ($p < 0.01$, $p' < p/32$, Bonferroni Corrected). However, the averaged correlation values did not reach high reliability (e.g. > 0.9) even for the CorEnv. It is obvious from the correlation plots that the reliability of node-wise static network metrics has high spatial variability in both connectivity estimators.

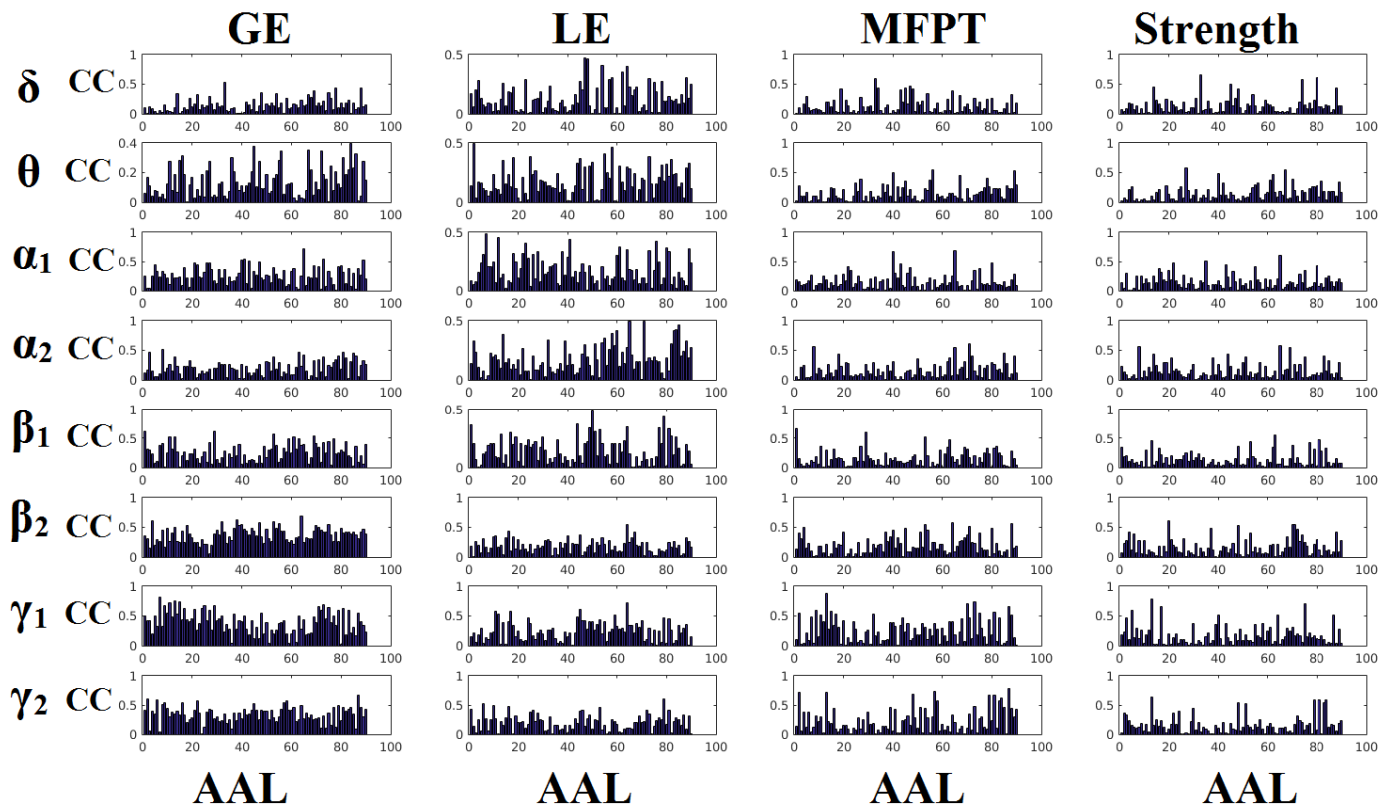


Figure 6. Reliability of node-wise network metrics derived from static brain networks with iPLV connectivity estimator.

Each subplot demonstrates the correlation coefficient (CC) of each network metric at every studying frequency band of each brain area between the two scanning sessions.

(CC: the correlation coefficient ; AAL:Automated Anatomical Labeling)

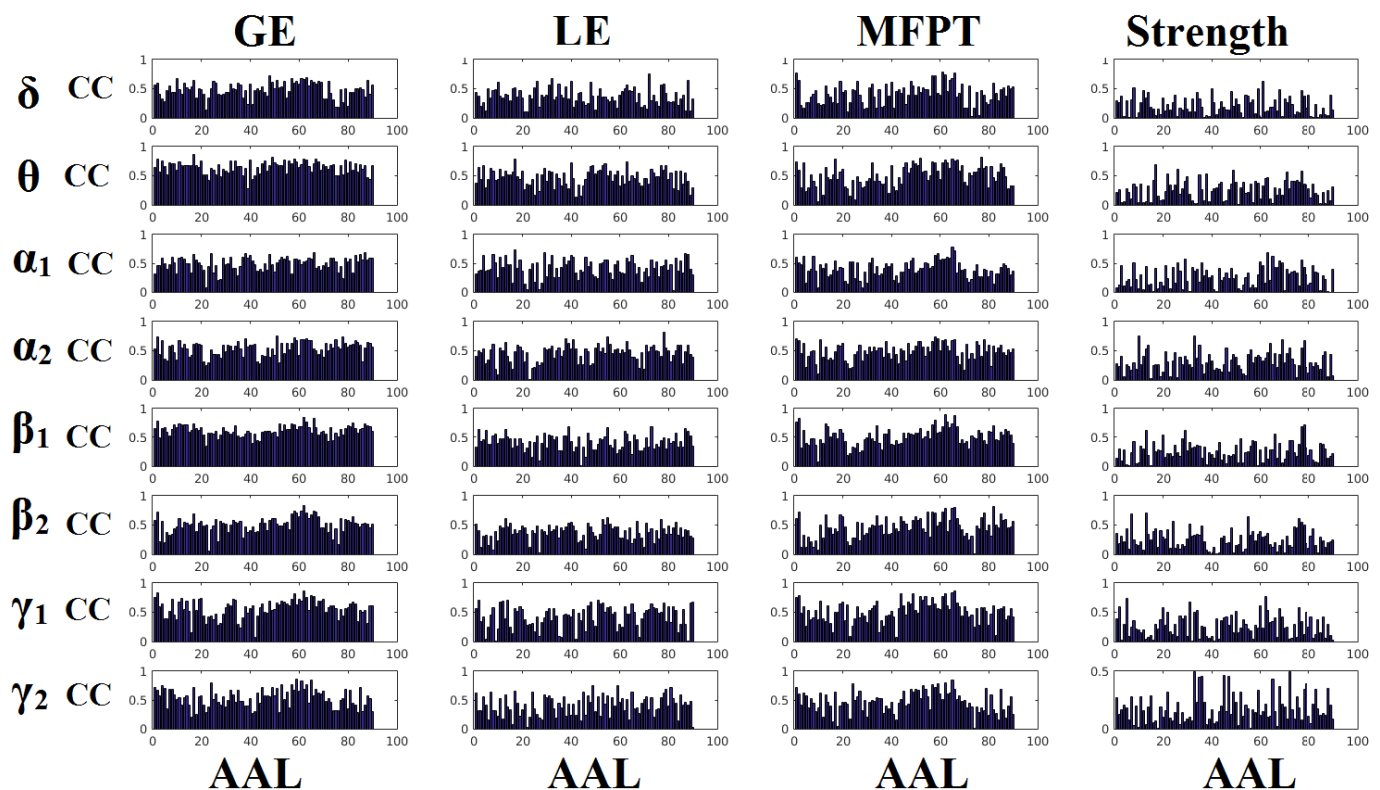


Figure 7. Reliability of node-wise network metrics derived from static brain networks with CorEnv connectivity estimator.

Each subplot demonstrates the correlation coefficient (CC) of each network metric at every studying frequency band of each brain area between the two scanning sessions.

(CC: the correlation coefficient ; AAL:Automated Anatomical Labeling)

[Figure 6-7 around here]

3.4 Frequency-Dependent FCG μ states and Reliability Chronnectomics for iPLV

Our analysis of DFCG based on iPLV revealed two FCG μ states^{iPLV} for each frequency band. The topology of these frequency-dependent FCG μ states^{iPLV} is illustrated in Fig.8. We integrated the nodes into five well-known brain networks: default-mode (DMN), fronto-parietal (FPN), occipital (O), sensorimotor (SM) and cingulo-opercular (CO). The mapping between the 90 ROIs of AAL and the five brain networks can be retrieved from section 3 in supp.material. One can clearly detect that the functional coupling between the default mode network and the cingulo-opercular dominates the coupling strength across the frequency bands and FCG μ states with less pronounced effect in both γ bands. Complementary, the coupling strength between and within the networks is diminished after α_2 frequency. This behaviour can be interpreted as a reduction of the connections up to the defined threshold following the increment of the frequency. The two FCG μ states^{iPLV} showed also a different distribution of strength globally and locally.

Both types of chronnectomics, transition rates (TR) (Fig.9) and occupancy times (OC) (Fig.10) demonstrated high reliability (Corr > 0.9, $p < 10^{-7}$) across frequency bands. Similar results, we obtained also for the second external dataset (see section 2 in sup.material).

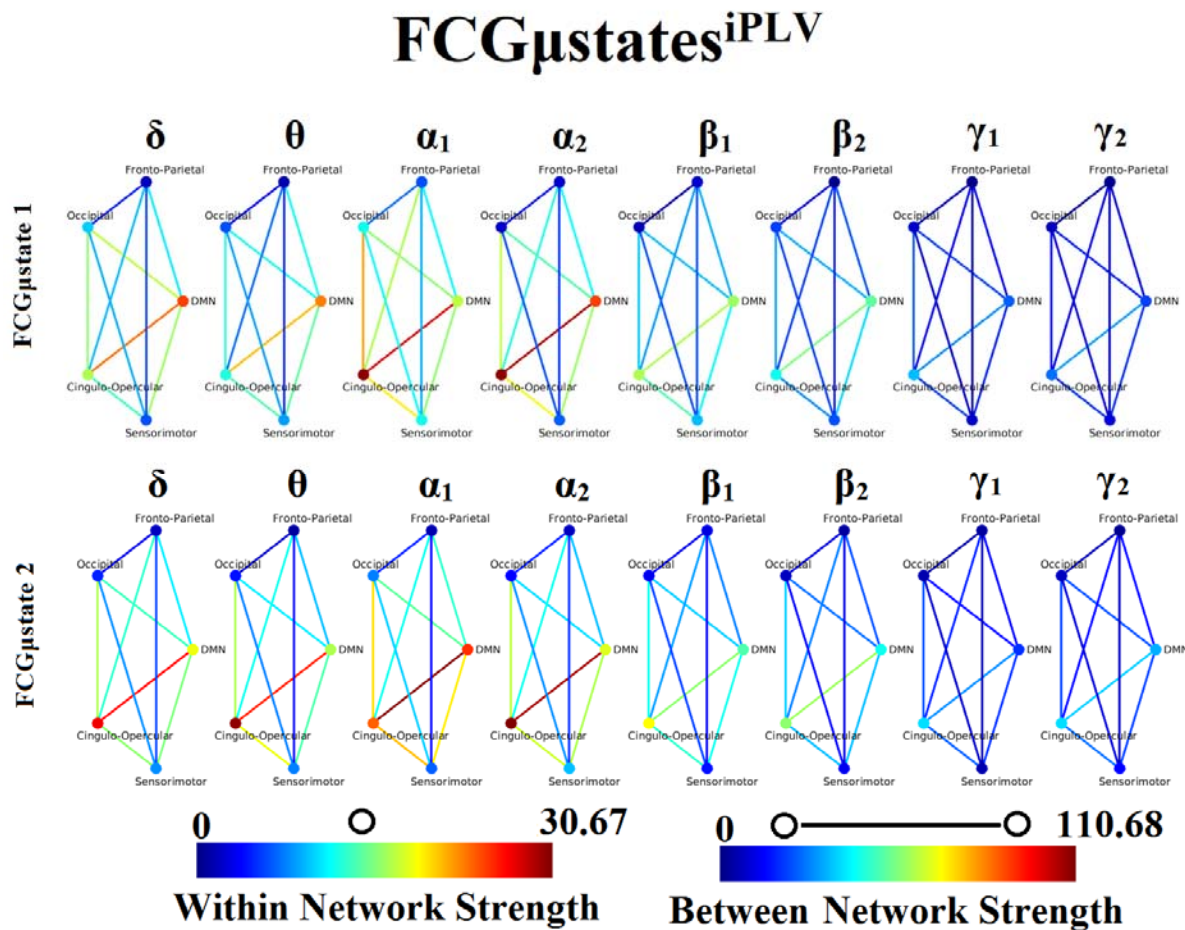


Fig.8. Frequency-dependent FCG μ states^{iPLV}

Network topologies of the FCG μ states^{iPLV} for each of the studying frequency band.

To enhance the visualization and contrast of FCG μ states across frequency bands, we adopted a network-wise representation instead of plotting the brain network in a 90 nodes layout. The 90 ROIs of the AAL template were assigned to each of the five networks: default-mode (DMN), fronto-parietal (FPN), occipital (O), sensorimotor (SM) and cingulo-opercular (CO). The color of each node denotes total strength of within network connections while the color of each line the total strength of between network connections. Both strength values were normalized across both frequencies and FCG μ states.

FCG μ states^{iPLV}

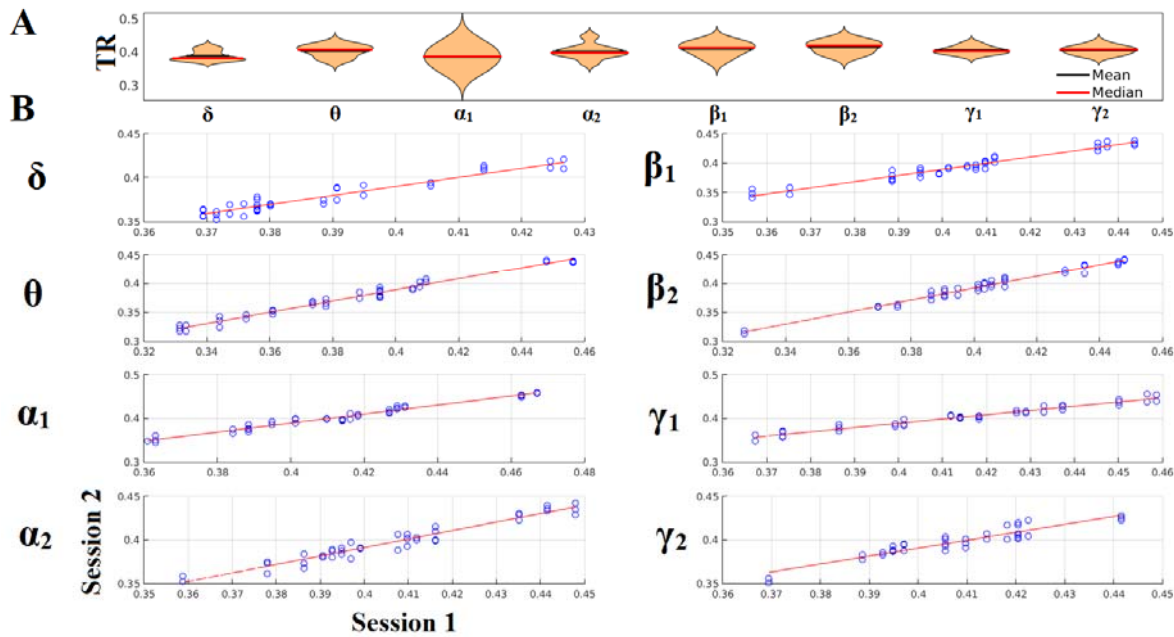


Fig.9 Reliability of Transition Rates (TR) based on FCG μ states^{iPLV} across frequency bands.

A. Mean and median values of TR across subjects and scan sessions for each frequency band

B. Scatter-plot of subject-specific TR for both sessions with the corresponding fitted line for each frequency band. All the correlations were $\text{Corr.} > 0.9$ ($p < 10^{-7}$)

Each blue circle corresponds to a participant.

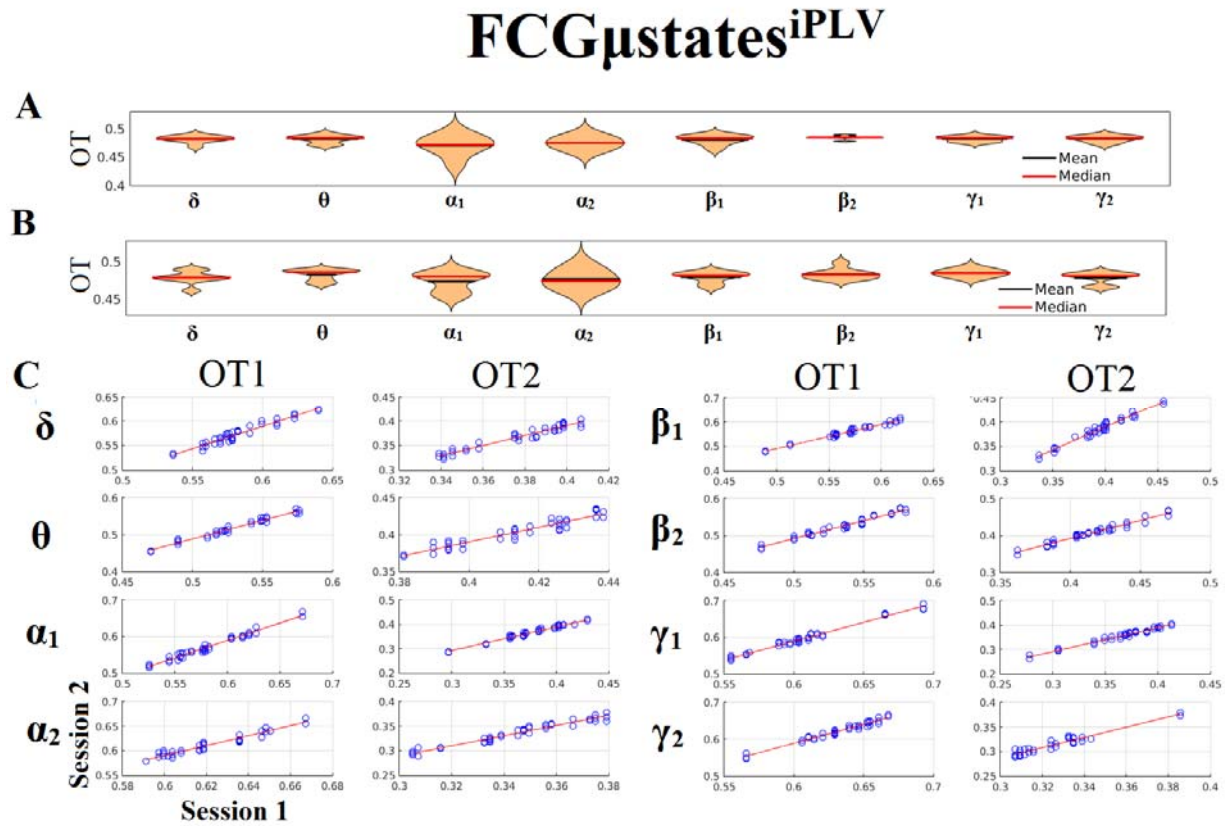


Fig.10 Reliability of Occupancy Time (OT) based on on FC μ states^{iPLV} across frequency bands.

- Mean and median values of OT across subjects and scan sessions for FC μ states¹ and for each frequency band
- Mean and median values of OT across subjects and scan sessions for FC μ states² and for each frequency band
- Scatter-plot of subject-specific OT for both sessions with the corresponding fitted line for each frequency band. All the correlations were $\text{Corr.} > 0.9$ ($p < 10^{-7}$).

Each blue circle corresponds to a participant.

[Figure 8-10 around here]

3.5 Frequency-Dependent FCG μ states and Reliability Chronnectomics for CorEnv

Our analysis of DFCG based on the correlation of the envelope connectivity estimators revealed two FCG μ states^{CorEnv} for each frequency band. The topology of these frequency-dependent FCG μ states^{CorEnv} is illustrated in Fig.11. default-mode (DMN), fronto-parietal (FPN), occipital (O), sensorimotor (SM) and cingulo-opercular (CO). The mapping between the 90 ROIs of AAL and the five brain networks can be retrieved from section 3 in sup.material. One can clearly detect that the functional coupling between the default mode network and the cingulo-opercular dominates the coupling strength across the frequency bands and FCG μ states. Complementary, the coupling strength between and within the networks is diminished after α_2 frequency as it was observed for FCG μ states^{iPLV}. Complementary, the network topologies of FCG μ states^{CorEnv} between low and high frequencies based on the strength coupling are more common than the FCG μ states^{iPLV}. This common substrate across the FCG μ states^{CorEnv} is consistent with the general notion that correlation of the envelope is more stacked to the structural connectome compared to the phase-based connectivity patterns which demonstrate higher degrees of freedom (Engel et al., 2013 ; compare Fig.8 with Fig.11).

Only transition rates (TR) showed high reliability for CorEnv (Cor.> 0.8, $p < 10^{-4}$) in all the frequency bands with the only exception of β_1 (Fig.12). Occupancy times (OT) showed low reliability across the frequency bands ($p > 0.4$)(Fig.13). TR of FCG μ states^{CorEnv} increased with the increment of frequency reaching a plateau in γ_1 . In contrast, TR of FCG μ states^{iPLV} did not show such a frequency-dependent behavior. Similar results, we obtained also for the second external dataset (see section 2 in sup.material).

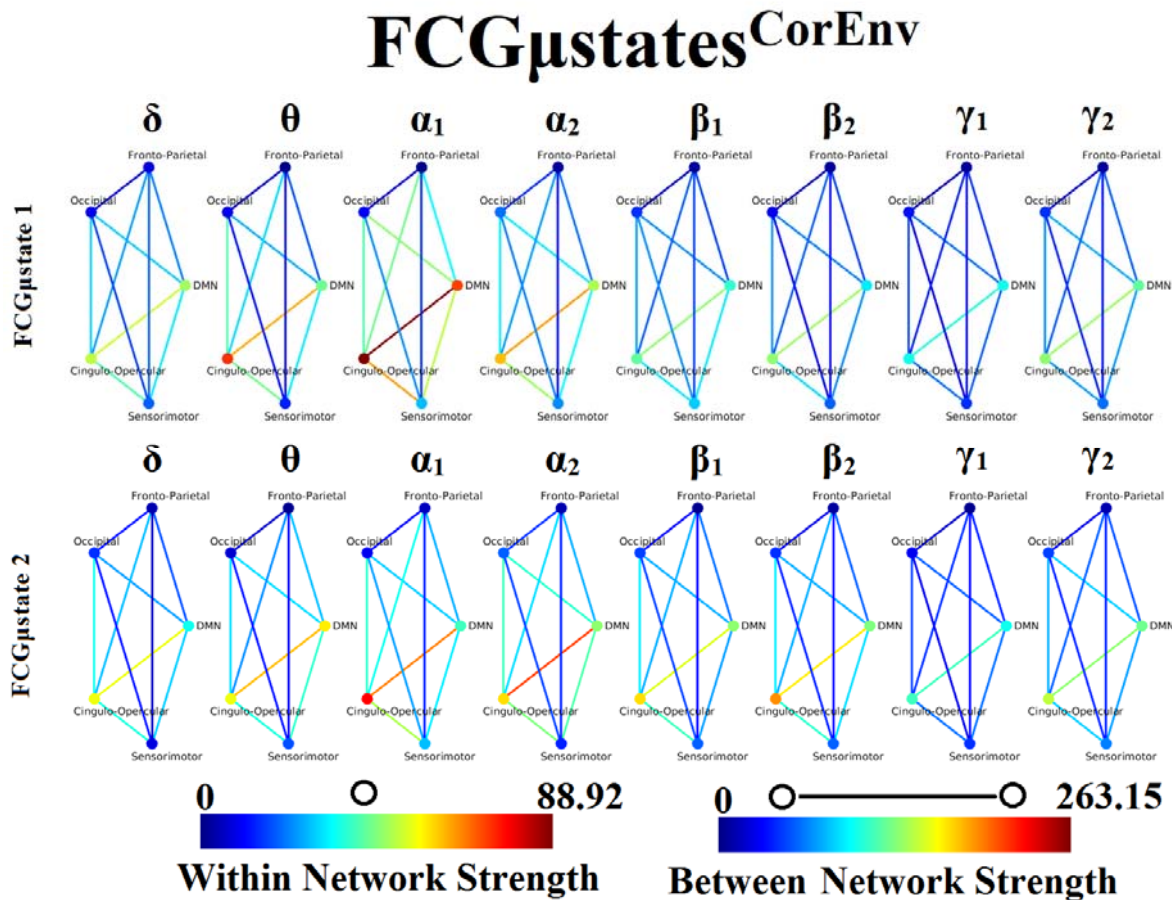


Fig.11. Frequency-dependent FCG μ states^{CorEnv}

Network topologies of the FCG μ states^{CorEnv} for each of the studying frequency band.

To enhance the visualization and contrast of FCG μ states across frequency bands, we adopted a network-wise representation instead of plotting the brain network in a 90 nodes layout. The 90 ROIs of the AAL template were assigned to each of the five networks: default-mode (DMN), fronto-parietal (FPN), occipital (O), sensorimotor (SM) and cingulo-opercular (CO). The color of each node denotes total strength of within network connections while the color of each line the total strength of between network connections. Both strength values were normalized across both frequencies and FCG μ states.

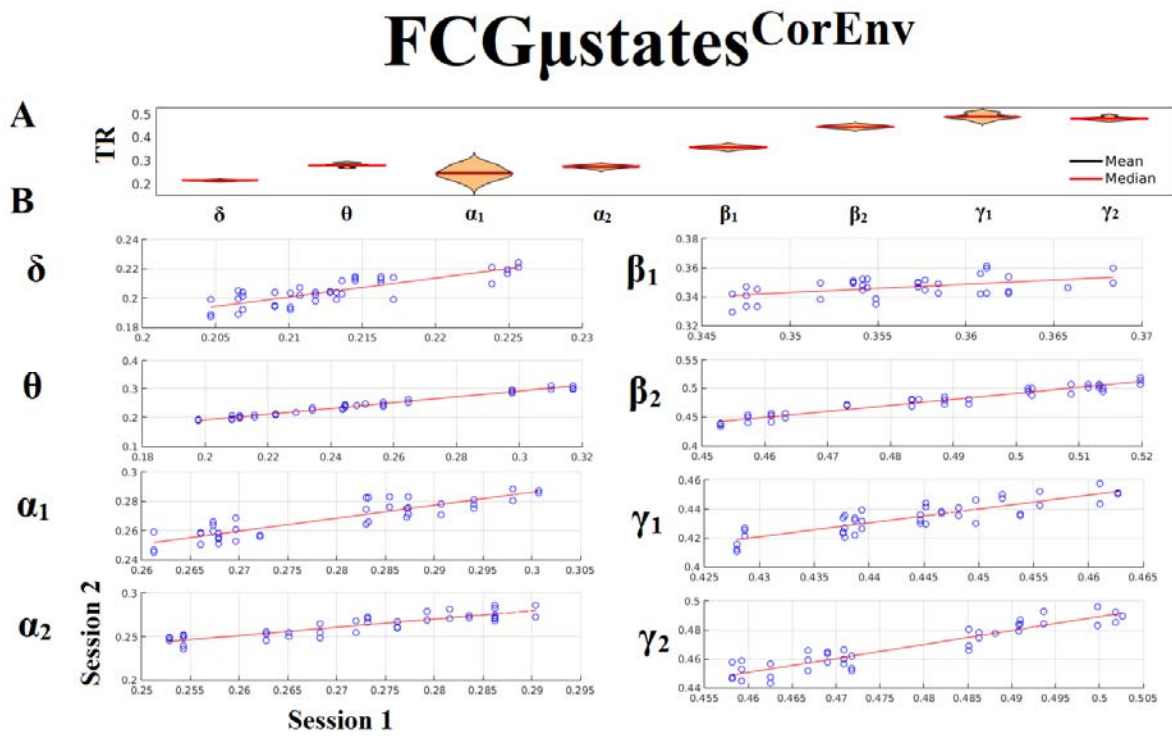


Fig.12 Reliability of Transition Rates (TR) based on FCG μ states^{CorEnv} across frequency bands.

- Mean and median values of TR across subjects and scan sessions for each frequency band
- Scatter-plot of subject-specific TR for both sessions with the corresponding fitted line for each frequency band. All the correlations were with the exception of β_1 were $\text{Corr.} > 0.8$ ($p < 10^{-4}$).
- Each blue circle corresponds to a participant.

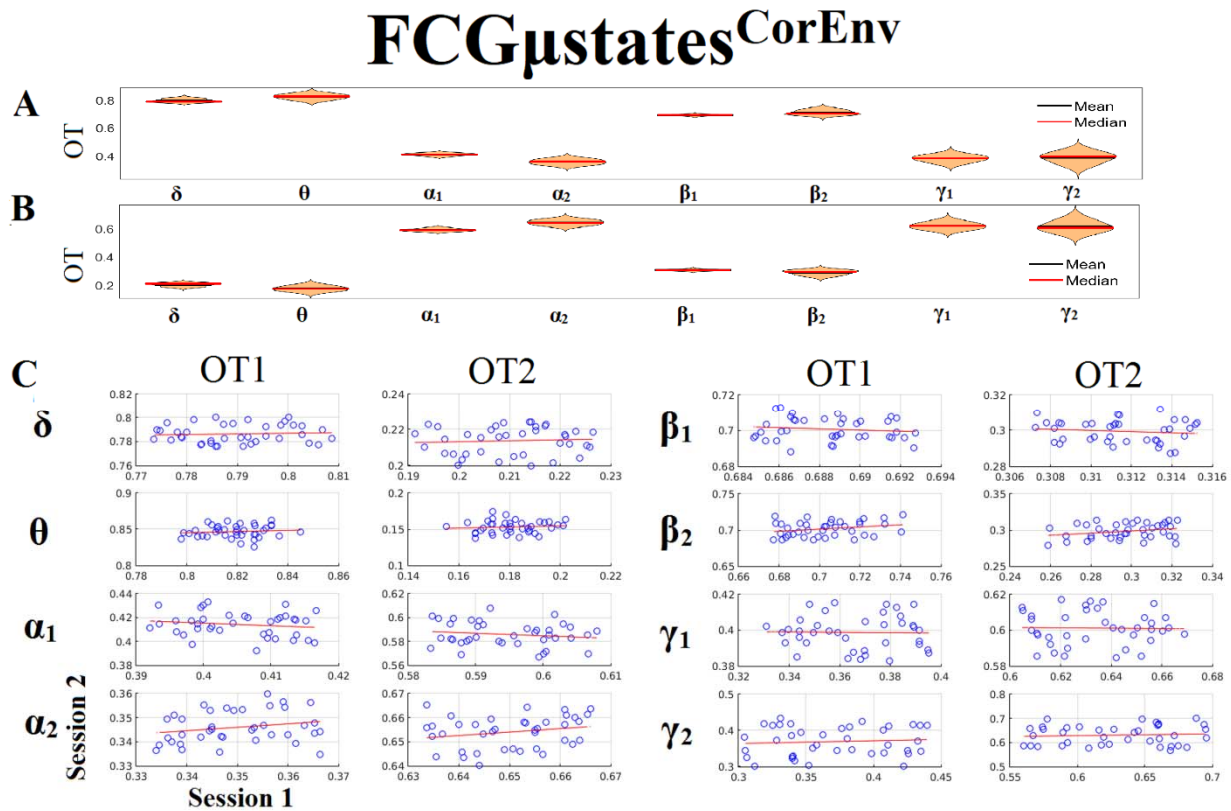


Fig.13 Reliability of Occupancy Time (OT) based on on FCG μ states^{CorEnv} across frequency bands.

- Mean and median values of OT across subjects and scan sessions for $\text{FC}\mu\text{states}^1$ and for each frequency band
- Mean and median values of OT across subjects and scan sessions for $\text{FC}\mu\text{states}^2$ and for each frequency band
- Scatter-plot of subject-specific OT for both sessions with the corresponding fitted line for each frequency band. All the correlations were weak and non-significant ($p > 0.4$).
- Each blue circle corresponds to a participant.

[Figure 11-13 around here]

4. Discussion

In the present study, we assessed the reliability of both static and dynamic functional connectivity network descriptors using resting-state MEG data from 40 subjects with repeat scan sessions. This is the first time that the reliability of chronnectomics, at least for the MEG modality, has been taken into account. Source time series were first beamformed independently for each frequency band (Brookes et al., 2011b; Hillebrand et al., 2005; Schoffelen and Gross, 2009), and then representative voxel time series based on the AAL atlas were extracted using a novel linear interpolation analysis. This procedure produces informative timeseries with a characteristic carrier frequency compared to the noisy time series derived by PCA or by selecting the voxel time series within a ROI that encapsulates the maximum power. Then, both static and dynamic frequency-dependent functional connectivity graphs were computed for each subject and scan session using the imaginary part of phase locking value (iPLV) and the correlation of the amplitude envelope (CorEnv). Both static and dynamic FCG (SFCG-DFCG) were filtered both statistically (surrogates) and topologically (OMST; Dimitriadis et al., 2017a,b).

Here, we adopted a data-driven pipeline of how to estimate both static and dynamic FCG statistically and topologically filtered using an algorithm previously applied to EEG recordings. We explored the reliability of both static network metrics and chronnectomics (dynamic network metrics) by employing two representative connectivity estimators for the construction of static and dynamic brain networks. Using this pipeline, prototypical FC_μstates were derived which were highly reproducible across subjects and scan sessions in both connectivity estimators and in all frequencies. The reliability of node-wise static network metrics based on four network metrics was low and spatially variable with both connectivity estimators while the CorEnv demonstrates higher ICC values compared to iPLV. The reliability of chronnectomics (TR,OT) for iPLV was high while for CorEnv the reliability of only the TR reaches high acceptable levels. Our results were reproduced also in a second external dataset (see supp. material). Our study strongly encouraging the use of DFCG with neuromagnetic recordings that takes the advantage of the nature of MEG modality, its high temporal resolution.

To our knowledge, this is the very first study that explored the reliability of both static and dynamic FCG and the related network metrics and chronnectomics, respectively in neuromagnetic source space at. In static FCG, node-wise network metrics demonstrated poor reliability for iPLV and poor to

medium for CorEnv. The node-wise reliability was highly spatial variable and static FCG have also demonstrated low repeatability in both connectivity estimators and especially in CorEnv. In contrast, prototypical FCstates were high reproducible across subjects and scan sessions in both connectivity estimators and in all frequencies supporting by the low reconstruction error (< 2%) of our brain network learning algorithm. Complementary, the reliability of chronnectomics (TR,OT) for iPLV was high while for CorEnv the reliability of only the TR reaches high acceptable levels. These results strongly encourages the neuroscientists to adopt the notion of DFCG with neuromagnetic recordings that takes the advantage of its high temporal resolution.

Two main studies explored the reliability of static FCG on the source level using MEG-beamformed resting-state connectivity analysis. Garces et al., (2016) studied the reliability of resting-state networks using four connectivity estimators: phase-locking value (PLV), phase lag index (PLI), direct envelope correlation (d-ecor), and envelope correlation with leakage correction (lc-ecor). They adopted intra-class correlation coefficient (ICC) and Kendall's W for assessing within and between-subjects agreement respectively. Higher test-retest reliability was found for PLV from θ to γ , and for lc-ecor and d-ecor in β . They commented that high ICC in PLV and d-ecor could be artifactual due to volume conduction effects. Colclough et al., (2016) investigated the reliability of static FCG at resting-state using beamformed source static connectivity analysis. They reported high reliability mostly for the partial correlation analysis and the correlation of the envelope among 12 connectivity estimators. Two more studies, Deuker et al., (2009) estimated the reliability of resting-state network metrics derived from MEG in sensor space using mutual information. They obtained high ICC for clustering, global efficiency and strength at a network level. Jin et al.,(2011) found medium ICC for nodal global efficiency, nodal degree and betweenness centrality in α and β bands.

Our results revealed that nodal network metrics derived from static FCG are less reproducible than their dynamic counterparts. In contrast, chronnectomics are highly reproducible with both adopted connectivity estimators. These results complemented with the results presented in (Colclough et al., 2016) where they adopted multiple connectivity estimators for the construction of static brain networks on the source level using MEG-beamformed resting-state activity. Colclough et al., (2016) showed that the static full-weighted FCG are high repeatable within the group-level mostly for the correlation of the envelope adopting a split-half strategy on a dataset with single scans. Here, we

accessed the reliability of any network metric using a two scan session design per subject. We should state here that edge-weights are significant for the construction of network topology and the reliability of connectomic biomarkers (Dimitriadis et al., 2018).

One of the key findings of our analysis are the frequency-dependent FC μ states for each connectivity estimator. Figures 8 and 11 illustrate the strength of the coupling within and between brain networks for the prototypical FC μ states at every frequency band. It is obvious that the highest strength within a network is observed within the DMN in both connectivity estimators. The strength between the brain networks is mainly distributed between DMN and the rest of the networks demonstrating the highest value till α_2 and dropped from β_1 to γ_2 (Figs.8,11). DMN reignited a high interest the last years for the description of intrinsic ongoing activity in studies of the human brain in health and disease (Raichle et al.,2015). Disruptions of functional connections within the DMN and between DMN and the rest of brain networks has been linked to various neurological and neuropsychiatric disorders (Mohan et al., 2016). Studies in healthy aging and Alzheimer's disease have revealed the significant role of DMN (Mevel et al., 2011).

Flexible hub theory based on clustering analysis of functional networks gave an explanation of how temporal functional modes exist where one neural region may be switched from a certain network at one time to a different network at another time (Smith et al., 2012). It remains still unclear how the different brain networks are connected together during spontaneous and task-related activity. Dosenbach *et al.* (2008) proposed that the FPN may serve to initiate and adjust cognitive control, whereas another control-type network, the CO network (CON), provides stable set-maintenance. Cole and colleagues (Cole et al., 2013) helped to untangle the flexible role of the FPN, many questions remain regarding the interaction between the FPN and the CON and also with other networks such as the DMN, SM and O. In the present study, we characterized the dynamic relationships of the brain networks across time at resting-state in various frequency bands and using representative connectivity estimators. We found that these functional patterns are high reproducible which will help multi groups worldwide to explore these interactions and build reproducible connectomic biomarkers in various diseases and disorders. Understanding the neural basis of intrinsic activity, cognition and structure–function relationships, will further enhance the prognostic/diagnostic abilities in clinical populations.

The interactions of large-scale brain networks at resting-state and during tasks is characterized by the studying frequency. Frequency-specific functional interactions between large-scale brain networks may be individual fingerprints of the idle activity and cognition (Siegel et al., 2012). It will be interesting in the future to explore how the FC μ states from a dynamic integrated functional connectivity graph (Dimitriadis et al., 2017c) that incorporates different intrinsic coupling modes both intra and cross-frequency coupling can be used for brain fingerprinting (Engel et al., 2013).

It is critically important to take advantage of new imaging modalities to untangle the mechanisms that produce circuit dysfunctions in many brain diseases and disorders. The development of biomarkers is very important and for that reason the proposed experimental paradigm and analytics of the meta-data derived from the analysis of human brain activity must be highly reliable and reproducible. Magnetoencephalography (MEG) allows us to measure neuronal events noninvasively with millisecond resolution and recent advanced methods opens new avenues of exploring and answering fundamental key research questions tailored to each brain disease/disorder. MEG can become a pioneering clinical research tool for mental disorders (Bowyer et al., 2015 ; Grent-T-Jong et al., 2016) (Uhlhaas et al., 2017), Alzheimer's disease (Lopez et al., 2014,2017 ; Koelewijn et al., 2017), dyslexia (Dimitridis et al., 2013b,2016b), traumatic brain injury (Dimitriadis et al., 2015c, Antonakakis et al., 2016, Antonakakis et al., 2017), multiple sclerosis (Tewarie et al., 2015), and other brain diseases. To establish MEG-based biomarkers that can be used for daily clinical practise and clinical evaluation, their reproducibility should be further explored. Complementary, the transition rate and also the occupancy times could be personalized biomarkers of a subject's resting-state condition where more task-related FC μ states and the related markers derived from them could build a subject specific database for longitudinal studies. Transition rates could be also correlated with IQ scores and also with behavioural performance during execution of cognitive tasks.

In the present study, we proposed a data-driven analytic pathway to assess the reliability of connectomics using MEG-beamformed connectivity analysis. Our results clearly support the notion of dynamic functional connectivity on the source level, the derived prototypical FC μ states and the related chronnectomics. Last years, many studies explored the dynamic functional connectivity graphs in many modalities (EEG/MEG/fMRI) and in both resting-state and during tasks (Dimitriadis et al., 2010a, 2012a,c, 2013a,b, 2015a,b,c,d, 2016a,b; Bassett et al., 2011; Allen et al., 2012; Handwerker et al., 2012; Ioannides et al., 2012; Hutchison et al., 2013; Liu and Duyn, 2013; Braun et al.,

2015b; Mylonas et al., 2015; Toppi et al., 2015; Yang and Lin, 2015; Calhoun and Adali, 2016, for reviews see Calhoun et al., 2014). This is the very first study according to authors' knowledge that the reliability of chronnectomics was explored. The outcome of this study opens new avenues in the exploration of human brain dynamics with MEG-beamformed source activity and under the notion of dynamic functional connectivity.

We addressed the key question of the readiness of neuromagnetic-based based functional connectomics to lead to clinically meaningful biomarker identification through the reliability approach that offers a repeat scan study in healthy controls. It is more than significant to customize stable approaches for analysing neuromagnetic recordings and present reproducible brain connectomics across scans in healthy control populations without sacrificing the individual characteristics that can be used for personalized intervention neuroscience (Gratton et al., 2018). It is highly recommend to access the reliability of any metric derived from any neuroimaging modality in a repeat scan protocol in healthy control population before applying it to a larger disease group where the cost of scanning is too high (diffusion MRI : Dimitriadis et al., 2017d). Additionally, we will expand this analysis in future efforts to identify disease status alone including clinical variables related to genetic risk (Lancaster et al., 2018), expected treatment response and prognosis.

5. Conclusions

In conclusion, we provided the first source-space test-retest reliability of dynamic functional connectivity of neuromagnetic recordings at resting-state. We computed both static and dynamic functional connectivity based on 90 ROIs according to AAL templated and using two connectivity estimators, the iPLV and the CorEnv. Nodal network metrics were unreliable in both connectivity estimators but with higher reliability demonstrated for CorEnv. Moreover, their reliability demonstrates highly spatial variability. Static FCG were also unreliable and especially for CorEnv. In contrast, prototypical FC_μstates were reliable in both connectivity estimators and across frequency bands. The derived chronnectomics (TR,OT) were highly reproducible for iPLV while only TR was reliable for CorEnv within acceptable levels. Our results strongly encourages future studies with main scope to explore resting-state networks in both healthy control and disease populations to apply a data-driven dynamic functional connectivity analysis using MEG-beamformed source reconstructed brain activity.

Acknowledgements

SID and DL were supported by MRC grant MR/K004360/1 (Behavioural and Neurophysiological Effects of Schizophrenia Risk Genes: A Multi-locus, Pathway Based Approach). SID is also supported by a MARIE-CURIE COFUND EU-UK Research Fellowship. BR and the CUBRIC MEG lab are supported by an MRC UK MEG Partnership Grant, MR/K005464/1 and an MRC Doctoral Training Grant, MR/K501086/1. We would like to acknowledge RCUK of Cardiff University and Wellcome Trust for covering the publication fee.

Conflict of Interest

The authors declares that there is no conflict of interest regarding the publication of this article.

Author Contributions

Conception of the research analysis: SD; Methods and design: SD; Data analysis (SD) ; Drafting the manuscript: SD; Data Acquisition:(BR);Critical revision of the manuscript: (BR,DL,KS); Every author read and approved the final version of the manuscript.

References

- Allen, E. A., Damaraju, E., Plis, S. M., Erhardt, E. B., Eichele, T., and Calhoun, V. D. (2012). Tracking whole-brain connectivity dynamics in the resting state. *Cereb. Cortex* 24, 663–676. doi: 10.1093/cercor/bhs352
- Antonakakis M, Dimitriadis SI, Zervakis M, Micheloyannis S, Rezaie R, Babajani-Feremi A, Gouridakis G, Papanicolaou AC (2016a), Altered cross-frequency coupling in resting-state MEG after mild traumatic brain injury. *Int J Psychophysiol* 102:1–11
- Antonakakis, M., Dimitriadis, S.I., Michalis Zervakis, Andrew C. Papanicolaou, George Zouridakis Reconfiguration of Dominant Coupling Modes in Mild Traumatic Brain Injury Mediated by δ -band Activity: a Resting State MEG Study Section. *Neuroscience In Press*
- Achard, S., Bullmore, E., 2007. Efficiency and cost of economical brain functional networks. *PLoS Comput Biol* 3, e17
- Aru, J., Priesemann, V., Wibral, M., Lana, L., Pipa, G., Singer, W., and Vicente, R. (2015). Untangling cross-frequency coupling in neuroscience. *Current Opinion in Neurobiology* 31, 51–61.
- Baker, A.P., Brookes, M.J., Rezek, I.A., Smith, S.M., Behrens, T., Probert Smith, P.J., Woolrich, M., 2014. Fast transient networks in spontaneous human brain activity. *Elife (Camb.)* 3, e01867
- Baldassarre A, Lewis CM, Comitteri G, Snyder AZ, Romani GL, Corbetta M. 2012. Individual variability in functional connectivity predicts performance of a perceptual task. *Proc Natl Acad Sci USA* 109:3516–3521.
- Bandettini PA. Twenty years of functional MRI: the science and the stories. *Neuroimage*. 2012 Aug 15;62(2):575-88. doi: 10.1016/j.neuroimage.2012.04.026. Epub 2012 Apr 20.
- Bassett, D.S., and Bullmore, E. (2006). Small-world brain networks. *Neuroscientist* 12, 512–523.
- Bassett, D. S., Wymbs, N. F., Porter, M. A., Mucha, P. J., Carlson, J. M., and Grafton, S. T. (2011). Dynamic reconfiguration of human brain networks during learning. *Proc. Natl. Acad. Sci. U.S.A.* 108, 7641–7646. doi: 10.1073/pnas.1018985108
- Benjamini, Y., and Hochberg, Y. (1995). Controlling the false discovery rate: A practical and Powerful Approach to Multiple Testing. *Journal of the Royal Statistical Society* 57, 289–300.

- Biswal, B. B. (2012). "Resting state fMRI: A personal history. [Review]". *NeuroImage*. **62** (2): 938–944. doi:10.1016/j.neuroimage.2012.01.090
- Biswal, B. B. (2011). "Resting State Functional Connectivity". *Biological Psychiatry*. **69** (9): 200S–200S.
- Braun, U., Schäfer, A., Walter, H., Erk, S., Romanczuk-Seiferth, N., Haddad, L., et al. (2015b). Dynamic reconfiguration of frontal brain networks during executive cognition in humans. *Proc. Natl. Acad. Sci. U.S.A.* **112**, 11678–11683. doi: 10.1073/pnas.1422487112
- Brookes MJ, Hale JR, Zumer JM, Stevenson CM, Francis ST, Barnes GR, et al. 2011a. Measuring functional connectivity using MEG: Methodology and comparison with fMRI. *Neuroimage* 56:1082–1104.
- Brookes MJ, Woolrich M, Luckhoo H, Price D, Hale JR, Stephenson MC, et al. 2011b. Investigating the electrophysiological basis of resting state networks using magnetoencephalography. *Proc Natl Acad Sci USA* 108:16783–16788.
- Brookes MJ, Woolrich MW, Barnes GR. 2012. Measuring functional connectivity in MEG: A multivariate approach insensitive to linear source leakage. *Neuroimage* 63:910–920.
- Buzsa'ki G, Draguhn A. 2004. Neuronal oscillations in cortical networks. *Science* 304:1926–1929.
- Calhoun, V. D., Miller, Robyn, Pearlson, Godfrey, and Adali, Tulay. (2014). The Chronnectome: Time-Varying Connectivity Networks as the Next Frontier in fMRI Data Discovery. *Neuron* 84, 262-274.
- Calhoun, V. D., and Adali, T. (2016). Time-Varying Brain Connectivity in fMRI Data: whole-brain data-driven approaches for capturing and characterizing dynamic states. *IEEE Signal Process. Mag.* 33, 52–66. doi: 10.1109/MSP.2015.2478915
- Ciancetta, L., Pizzella, V., Romani, G., Corbetta, M., 2010. Temporal dynamics of spontaneous MEG activity in brain networks. *Proc. Natl Acad. Sci.* 107 (13), 6040–6045
- Colclough GL, Brookes MJ, Smith SM, Woolrich MW. A symmetric multivariate leakage correction for MEG connectomes. *Neuroimage*. 2015 Aug 15;117:439-48. doi: 10.1016/j.neuroimage.2015.03.071. Epub 2015 Apr 7.
- Colclough GL, Woolrich MW, Tewarie PK, Brookes MJ, Quinn AJ, Smith SM. How reliable are MEG resting-state connectivity metrics? *Neuroimage*. 2016 Sep;138:284-93. doi: 10.1016/j.neuroimage.2016.05.070. Epub 2016 Jun 1.

- Cole MW, et al. Multi-task connectivity reveals flexible hubs for adaptive task control. *Nat Neurosci.* 2013;16:1348–1355.
- Deco G, Jirsa VK, McIntosh AR. 2011. Emerging concepts for the dynamical organization of resting-state activity in the brain. *Nat Rev Neurosci* 12:43–56.
- de Pasquale F, Della Penna S, Snyder AZ, Lewis C, Mantini D, Marzetti L, et al. 2010. Temporal dynamics of spontaneous MEG activity in brain networks. *Proc Natl Acad Sci USA* 107:6040–6045.
- Deuker L, Bullmore ET, Smith M, Christensen S, Nathan PJ, Rockstroh B, Bassett DS. 2009. Reproducibility of graph metrics of human brain functional networks. *Neuroimage* 47:1460–1468.
- Dimitriadis, S. I., Laskaris, N. A., Del Rio-Portilla, Y., and Koudounis, G. C. (2009). Characterizing dynamic functional connectivity across sleep stages from EEG. *Brain Topogr.* 22, 119–133. doi: 10.1007/s10548-008-0071-4
- Dimitriadis, S. I., Laskaris, N. A., Tsirka, V., Vourkas, M., Micheloyannis, S., and Fotopoulos, S. (2010a). Tracking brain dynamics via time-dependent network analysis. *J. Neurosci. Methods* 193, 145–155. doi: 10.1016/j.jneumeth.2010.08.027
- Dimitriadis, S. I., Laskaris, N. A., Tsirka, V., Vourkas, M., and Micheloyannis, S. (2010b). What does delta band tell us about cognitive processes: a mental calculation study. *Neurosci. Lett.* 483, 11–15. doi: 10.1016/j.neulet.2010.07.034
- Dimitriadis, S. I., Laskaris, N. A., Tsirka, V., Vourkas, M., and Micheloyannis, S. (2012a). An EEG study of brain connectivity dynamics at the resting state. *Nonlinear Dyn. Psychol. Life Sci.* 16, 5–22.
- Dimitriadis, S. I., Kanatsouli, K., Laskaris, N. A., Tsirka, V., Vourkas, M., and Micheloyannis, S. (2012b). Surface EEG shows that functional segregation via phase coupling contributes to the neural substrate of mental calculations. *Brain Cogn.* 80, 45–52. doi: 10.1016/j.bandc.2012.04.001
- Dimitriadis, S. I., Laskaris, N. A., Tzelepi, A., and Economou, G. (2012c). Analyzing Functional Brain Connectivity by means of Commute Times: a new approach and its application to track event-related dynamics. *IEEE (TBE). Trans. Biomed. Eng.* 59, 1302–1309. doi: 10.1109/TBME.2012.2186568
- Dimitriadis, S. I., Laskaris, N. A., and Tzelepi, A. (2013a). On the quantization of time-varying phase synchrony patterns into distinct Functional Connectivity Microstates (FC μ states) in a multi-trial visual ERP paradigm. *Brain Topogr.* 3, 397–409. doi: 10.1007/s10548-013-0276-z

- Dimitriadis, S. I., Laskaris, N. A., Simos, P. G., Micheloyannis, S., Fletcher, J. M., Rezaie, R., et al. (2013b). Altered temporal correlations in resting-state connectivity fluctuations in children with reading difficulties detected via MEG. *Neuroimage* 83, 307–317. doi: 10.1016/j.neuroimage.2013.06.036
- Dimitriadis, S. I., Sun, Yu, Kwok, K., Laskaris, N. A., Thakor, N., and Bezerianos, A. (2014). Cognitive workload assessment based on the tensorial treatment of EEG estimates of cross-frequency phase interactions. *Ann. Biomed. Eng.* 43, 977–989. doi: 10.1007/s10439-014-1143-0
- Dimitriadis, S. I., Laskaris, N. A., and Micheloyannis, S. (2015a). Transition dynamics of EEG-based Network Microstates unmask developmental and task differences during mental arithmetic and resting wakefulness. *Cogn. Neurodyn.* 9, 371–387. doi: 10.1007/s11571-015-9330-8
- Dimitriadis, S. I., Laskaris, N. A., Bitzidou, M. P., Tarnanas, I., and Tsolaki, M. N. (2015b). A novel biomarker of amnesic MCI based on dynamic cross-frequency coupling patterns during cognitive brain responses. *Front. Neurosci.* 9:350. doi: 10.3389/fnins.2015.00350
- Dimitriadis, S. I., Zouridakis, G., Rezaie, R., Babajani-Feremi, A., and Papanicolaou, A. C. (2015c). Functional connectivity changes detected with magnetoencephalography after mild traumatic brain injury. *Neuroimage* 9, 519–531. doi: 10.1016/j.nicl.2015.09.011
- Dimitriadis, S. I., Yu, S., Kwok, K., Laskaris, N. A., Thakor, N., and Bezerianos, A. (2015d). Cognitive workload assessment based on the tensorial treatment of EEG estimates of cross-frequency phase interactions. *Ann. Biomed. Eng.* 43, 977–989. doi: 10.1007/s10439-014-1143-0
- Dimitriadis, S., Sun, Y., Laskaris, N., Thakor, N., and Bezerianos, A. (2016a). Revealing cross-frequency causal interactions during a mental arithmetic task through symbolic transfer entropy: a novel vector-quantization approach. *IEEE Trans. Neural Syst. Rehabil. Eng.* 10, 1017–1028. doi: 10.1109/TNSRE.2016.2516107
- Dimitriadis, S. I., Laskaris, N. A., Simos, P. G., Fletcher, J. M., and Papanicolaou, A. C. (2016b). Greater repertoire and temporal variability of cross-frequency coupling (CFC) modes in resting-state neuromagnetic recordings among children with reading difficulties. *Front. Hum. Neurosci.* 10:163. doi: 10.3389/fnhum.2016.00163
- Dimitriadis, S.I., Salis, I., Tarnanas, I., Linden, D (2017a). Topological Filtering of Dynamic Functional Brain Networks Unfolds Informative Chronnectomics: A Novel Data-Driven Thresholding Scheme Based on Orthogonal Minimal Spanning Trees (OMSTs). *Front. Neuroinform.*, 26 April 2017 | <https://doi.org/10.3389/fninf.2017.00028>

- Dimitriadis SI, Antonakakis M, Simos P, Fletcher JM, Papanicolaou A (2017b). **Data-driven Topological Filtering based on Orthogonal Minimal Spanning Trees: Application to Multi-Group MEG Resting-State Connectivity.** *Brain Connect.* 2017 Sep 11. doi: 10.1089/brain.2017.0512.
- Dimitriadis SI, Salis CI (2017c) Mining Time-Resolved Functional Brain Graphs to an EEG-Based Chronnectomic Brain Aged Index (CBAI). *Front Hum Neurosci.* 2017 Sep 7;11:423. doi: 10.3389/fnhum.2017.00423. eCollection 2017
- Dimitriadis SI, Drakesmith M, Bells S, Parker GD, Linden DE, Jones DK (2017d). Improving the Reliability of Network Metrics in Structural Brain Networks by Integrating Different Network Weighting Strategies into a Single Graph. *Frontiers in Neuroscience.* 2017;11:694. doi:10.3389/fnins.2017.00694.
- Dimitriadis SI, López ME, Bruña R, et al.(2018). How to Build a Functional Connectomic Biomarker for Mild Cognitive Impairment From Source Reconstructed MEG Resting-State Activity: The Combination of ROI Representation and Connectivity Estimator Matters. *Frontiers in Neuroscience.* 2018;12:306. doi:10.3389/fnins.2018.00306.
- Dosenbach NU, et al. A dual-networks architecture of top-down control. *Trends Cogn Sci.* 2008;12:99–105.
- Dunkley BT, Da Costa L, Bethune A, et al. Low-frequency connectivity is associated with mild traumatic brain injury. *NeuroImage Clin.* 2015;7:611–21
- Engel A. K., Gerloff, C., Hlilgetag, C. C., and Nolte, Guido. (2013). Intrinsic Coupling Modes: Multiscale Interactions in Ongoing Brain Activity. *Neuron* 80, 867–886.
- Engels MM, Stam CJ, van der Flier WM, Scheltens P, de WaalH, van Straaten EC. 2015. Declining functional connectivity and changing hub locations in Alzheimer’s disease: An EEGstudy. *BMC Neurol* 15:145.
- Fouss F, Francoise K, Yen L, Pirotte A, Saerens M. 2012. *Neural Netw* 31:53-72.
- Garcés P, Martín-Buro M C, Maestú F. 2016. Quantifying the test-retest reliability of magnetoencephalography resting-state functional connectivity. *Brain Connect.* 6:448–460
- Goñi J, Avena-Koenigsberger A, Velez de Mendizabal N, van den Heuvel MP, Betzel RF, Sporns O (2013) Exploring the Morphospace of Communication Efficiency in Complex Networks. *PLoS ONE* 8(3): e58070. <https://doi.org/10.1371/journal.pone.0058070>
- Gratton, C., Laumann, T.O., Nielsen, A.N., Green, D.J., Gordon, E.M., Gillmore, A.W., Nelson, S.M., Coalson, R.S., Snyder, A.Z., Schlaggar, B.L. et al. *Neuron.* 2018; 98: 439–452

- Greut-T-Jong, T., Rivolta, D., Sauer, A., Grube, M., Singer, W., Wibral, M. and Uhlhaas, P. (2016) MEG-measured visually induced gamma-band oscillations in chronic schizophrenia: Evidence for impaired generation of rhythmic activity in ventral stream regions. *Schizophrenia Research*, 176(2-3), pp. 177-185.
- Hall EL, Woolrich MW, Thomaz CE, Morris PG, Brookes MJ. 2013. Using variance information in magnetoencephalography measures of functional connectivity. *Neuroimage* 67:203–212.
- Hammond D, Gur Y, and Johnson C. Graph Diffusion Distance: A Difference Measure for Weighted Graphs Based on the Graph Laplacian Exponential Kernel. In *Proceedings of IEEE GlobalSIP*, Austin, TX, 2013, 419.
- Handwerker, D. A., Roopchansingh, V., Gonzalez-Castillo, J., and Bandettini, P. A. (2012). Periodic changes in fMRI connectivity. *Neuroimage* 63, 1712–1719. doi: 10.1016/j.neuroimage.2012.06.078
- Hardmeier M, Hatz F, Bousleiman H, Schindler C, Stam CJ, Fuhr P. 2014. Reproducibility of functional connectivity and graph measures based on the phase lag index (PLI) and weighted phase lag index (wPLI) derived from high resolution EEG. *PLoS One* 9:e108648.
- Hillebrand A, Barnes GR (2002) A quantitative assessment of the sensitivity of whole-head MEG to activity in the adult human cortex. *Neuroimage* 16(3 Pt 1):638–650.
- Hillebrand A, Singh KD, Holliday IE, Furlong PL, Barnes GR. 2005. A new approach to neuroimaging with magnetoencephalography. *Hum Brain Mapp* 25:199–211.
- Hillebrand A., Prejaas Tewarie, Edwin van Dellen, Meichen Yu' Ellen W. S. Carbo, Linda Douw, Alida A. Gouw, Elisabeth C. W. van Straaten and Cornelis J. Stam 2016. Direction of information flow in large-scale resting-state networks is frequency-dependent. *PNAS* 113 3867–3872, doi: 10.1073/pnas.1515657113
- Hipp JF, Hawellek DJ, Corbetta M, Siegel M, Engel AK. 2012. Large-scale cortical correlation structure of spontaneous oscillatory activity. *Nat Neurosci* 15:884–890.
- Hunt BA, Tewarie PK, Mouglin OE, Geades N, Jones DK, Singh KD, Morris PG, Gowland PA, Brookes MJ (2016): Relationships between cortical myeloarchitecture and electrophysiological networks. *Proc Natl Acad Sci* 113:13510–13515.
- Hutchison, R. M., Womelsdorf, T., Allen, E. A., Bandettini, P. A., Calhoun, V. D., Corbetta, M., et al. (2013). Dynamic functional connectivity: promise, issues, and interpretations. *Neuroimage* 80, 360–378. doi: 10.1016/j.neuroimage.2013.05.079

- Jin S-H, Seol J, Kim JS, Chung CK. 2011. How reliable are the functional connectivity networks of MEG in resting states? *J Neurophysiol* 106:2888–2895.
- Ioannides, A. A., Dimitriadis, S. I., Saridis, G., Voultzidou, M., Poghosyan, V., Liu, L., et al. (2012). Source space analysis of event-related dynamic reorganization of brain networks. *Comput. Math. Methods Med.* 15:452503. doi: 10.1155/2012/452503
- Koelewijn L, Aline Bompas^a, Andrea Tales^b, Matthew J. Brookes^c, Suresh D. Muthukumaraswamy^d, Antony Bayer^e, Krish D. Singh. Alzheimer's disease disrupts alpha and beta-band resting-state oscillatory network connectivity. *Clinical Neurophysiology* In press
- Lachaux JP, E. Rodriguez, J. Martinerie, F.J. Varela. Measuring phase synchrony in brain signals. *Hum. Brain Mapp.*, 8 (1999), pp. 194–208
- Lancaster TM^{1,2,3}, Dimitriadis SL^{2,3}, Tansey KE^{3,4}, Perry G², Ihssen N⁵, Jones DK², Singh KD², Holmans P³, Pocklington A³, Davey Smith G^{4,6}, Zammit S^{3,6}, Hall J^{1,3}, O'Donovan MC^{1,3}, Owen MJ^{1,3}, Linden DE^{1,2,3}. Structural and Functional Neuroimaging of Polygenic Risk for Schizophrenia: A Recall-by-Genotype-Based Approach. *Schizophr Bull.* 2018 Mar 28. doi: 10.1093/schbul/sby037. [Epub ahead of print]
- Liu, X., and Duyn, J. H. (2013). Time-varying functional network information extracted from brief instances of spontaneous brain activity. *Proc. Natl. Acad. Sci. U.S.A.* 110, 4392–4397. doi: 10.1073/pnas.1216856110
- Logothetis, L.K. What we can do and what we cannot do with fMRI. *Nature* 453, 869-878 (12 June 2008) | doi:10.1038/nature06976
- Lo'pez ME, Brun~a R, Aurtenetxe S, Pineda-Pardo JA', Marcos A, Arrazola J, et al. 2014. Alpha-band hypersynchronization in progressive mild cognitive impairment: A magnetoencephalography study. *J Neurosci* 34:14551–14559.
- López ME, Engels MMA, van Straaten ECW, et al. MEG Beamformer-Based Reconstructions of Functional Networks in Mild Cognitive Impairment. *Frontiers in Aging Neuroscience.* 2017;9:107. doi:10.3389/fnagi.2017.00107.
- Marimpis, A.D., Dimitriadis, S.I., Adamos, D.A., and Laskaris, N.A. (2016). NNMF connectivity microstates : A new approach to represent the dynamic brain coordination. *Frontiers in Neuroinformatics* 10. doi: 10.3389/conf.fninf.2016.20.00022
- Martinetz, T. M., Berkovich, S. G., Schulten, K. J. (1993). 'Neural-gas' network for vector quantization and its application to time-series prediction. *IEEE Trans. Neural Netw.* 4, 558-569.

- Mevel K, Gaël Chételat, Francis Eustache, and Béatrice Desgranges, “The Default Mode Network in Healthy Aging and Alzheimer's Disease,” *International Journal of Alzheimer’s Disease*, vol. 2011, Article ID 535816, 9 pages, 2011. doi:10.4061/2011/535816
- Mohan A, Roberto AJ, Mohan A, et al. The Significance of the Default Mode Network (DMN) in Neurological and Neuropsychiatric Disorders: A Review. *The Yale Journal of Biology and Medicine*. 2016;89(1):49-57.
- Mylonas, D. S., Siettos, C. I., Evdokimidis, I., Papanicolaou, A. C., and Smyrnis, N. (2015). Modular patterns of phase desynchronization networks during a simple visuomotor task. *Brain Topogr*. 29, 118–129. doi: 10.1007/s10548-015-0451-5
- Nolte, G., Bai, O., Wheaton, L., Mari, Z., Vorbach, S., and Hallett, M. (2004). Identifying true brain interaction from EEG data using the imaginary part of coherency. *Clinical Neurophysiology* 115, 2292–2307.
- O’Neill, G.C., Bauer, M., Woolrich, M.W., Morris, P.G., Barnes, G.R., Brookes, M.J., 2015b. Dynamic recruitment of resting state sub-networks. *Neuroimage* 115, 85–95
- Pavan M, Pelillo M (2007) Dominant sets and pairwise clustering. *IEEE Trans PAMI* 29(1):167–172
- Pereda E, Quiroga RQ, Bhattacharya J. 2005. Nonlinear multivariate analysis of neurophysiological signals. *Prog Neurobiol* 77:1–37.
- Raichle ME. The brain's default mode network. *Annu Rev Neurosci*. 2015 Jul 8;38:433-47.
- Rosazza C, Minati L. 2011. Resting-state brain networks: Literature review and clinical applications. *Neurol Sci* 32:773-785.
- Schoffelen JM, Gross J. 2009. Source connectivity analysis with MEG and EEG. *Hum Brain Mapp* 30:1857–1865.
- Siegel M, Donner TH, Engel AK (2012). Spectral fingerprints of large-scale neuronal interactions. *Nature Reviews Neuroscience* 13, 121–134
- Smith SM, et al. Temporally-independent functional modes of spontaneous brain activity. *Proc Natl Acad Sci U S A*. 2012;109:3131–3136.
- Stam, CJ (2014). Modern network science of neurological disorders. *Nature Reviews Neuroscience* 15, 683–695
- Tewarie P, Schoonheim MM, Schouten DI, Polman CH, Balk LJ, Uitdehaag BMJ, et al. 2015. Functional brain networks: Linking thalamic atrophy to clinical disability in multiple sclerosis, a multimodal fMRI and MEG Study. *Hum Brain Mapp* 36:603–618.

- Toppi, J., Astolfi, L., Poudel, G. R., Innes, C. R., Babiloni, F., and Jones, R. D. (2015). Time-varying effective connectivity of the cortical neuroelectric activity associated with behavioural microsleeps. *Neuroimage* 124, 421–432. doi: 10.1016/j.neuroimage.2015.08.059
- Tzourio-Mazoyer N, et al. (2002) Automated anatomical labeling of activations inSPM using a macroscopic anatomical parcellation of the MNI MRI single-subject brain. *Neuroimage*15(1):273–289.
- Uhlhaas PJ, Liddle P, Linden DEJ, Nobre AC, Singh KD, Gross J. Magnetoencephalography as a Tool in Psychiatric Research: Current Status and Perspective. *Biological Psychiatry*. 2017;2(3):235-244. doi:10.1016/j.bpsc.2017.01.005.
- Vidaurre, D., Quinn, A.J., Baker, A.P., Dupret, D., Tejero-Cantero, A., Woolrich, M.W., 2016. Spectrally resolved fast transient brain states in electrophysiological data. *Neuroimage* 126, 81–95.
- Vrba J, Robinson SE. Signal processing in magnetoencephalography. *Methods* 2001;25:249–71
- Wang SP, Pei WJ (2008) First passage time of multiple Brownian particles on networks with applications. *Physica A* 387: 4699–4708
- Yamashita M, Kawato M, Imamizu H. 2015. Predicting learning plateau of working memory from whole-brain intrinsic network connectivity patterns. *Sci Rep* 5:7622.
- Yang, C. Y., and Lin, C. P. (2015). Time-varying network measures in resting and task states using graph theoretical analysis. *Brain Topogr.* 28, 529–408. doi: 10.1007/s10548-015-0432-8