

Altered cingulate and substantia nigra/ventral tegmental activation to novelty and emotional salience in antipsychotic naïve first episode psychosis patients

Franziska Knolle^{1,3*}, Anna O Ermakova^{2*}, Azucena Justicia^{2,4}, Paul C Fletcher^{2,5,6}, Nico Bunzeck⁷, Emrah Düzel^{8,9}, Graham K Murray^{2,3,5}

*joint first author with equal contribution to the work

Affiliations

¹ Department of Psychiatry, University of Cambridge, Cambridge, UK

² Unit for Social & Community Psychiatry, WHO Collaborating Centre for Mental Health Services Development, East London NHS Foundation Trust

³ Behavioural and Clinical Neuroscience Institute, University of Cambridge

⁴ Institute of Neuropsychiatry and Addictions (INAD), Parc de Salut Mar, Barcelona, Spain. Centro de Investigación Biomédica en Red de Salud Mental (CIBERSAM), Barcelona, Spain.

⁵ Cambridgeshire and Peterborough NHS Foundation Trust, Cambridge, UK

⁶ Institute of Metabolic Science, University of Cambridge

⁷ Institute of Psychology, University of Lübeck, Lübeck, Germany

⁸ Otto-von-Guericke University Magdeburg, Institute of Cognitive Neurology and Dementia Research, Magdeburg, Germany

⁹ German Centre for Neurodegenerative Diseases (DZNE), Magdeburg, Germany

Abstract

Abnormal salience processing has been suggested to contribute to the formation of positive psychotic symptoms in schizophrenia and related conditions. Previous research utilising reward learning or anticipation paradigms has demonstrated cortical and subcortical abnormalities in people with psychosis, specifically in the prefrontal cortex, the dopaminergic midbrain and the striatum. In these paradigms, reward prediction errors attribute motivational salience to stimuli. However, little is known about possible abnormalities across different forms of salience processing in psychosis patients, and whether any such abnormalities involve the dopaminergic midbrain. The aim of our study was, therefore, to investigate possible alterations in psychosis in neural activity in response to various forms of salience: novelty, negative emotion, targetness (task-driven salience) and rareness. We studied 14 antipsychotic naïve participants with first episode psychosis, and 37 healthy volunteers. During fMRI scanning, participants performed a visual oddball task containing these four forms of salience ¹. Psychosis patients showed abnormally reduced signalling in the substantia nigra/ventral tegmental area (SN/VTA) and the cingulate gyrus for novelty, negative emotional salience and targetness; reduced striatal signalling to novelty and negative emotional salience, and reduced signalling in the right amygdala to negative emotional salience. There was reduced cerebellar activation to targetness in the patients, consistent with abnormal efference copy transmission in preparation of a motor response. Our results indicate that generalised salience processing alterations in patients with psychosis, mainly involving the dopaminergic SN/VTA, the cingulate gyrus and the striatum.

Introduction

Saliency is a property that enables a stimulus to attract attention, and to drive cognition and behaviour. It can be described as a product of matched/mismatched stimulus features and internal, driving factors of an individual, such as goals, beliefs and experiences at a particular point in time. Saliency is a multifaceted concept², including different dimensions, such as reward and threat prediction, prediction error, novelty, emotional saliency or rareness. The literature well describes the role of dopamine (DA) for reward prediction error^{3,4}, with neural signals originating in the substantia nigra/ventral tegmental area (SN/VTA)⁵. However, DA neuron firing is not exclusive to reward prediction error, but has also been reported in response to non-rewarding unexpected events, such as aversive or alerting⁶, as well as novel events⁷, suggesting that DA release, at least in some contexts, reflects general saliency^{8,9}.

In psychosis, abnormal saliency processing secondary to dysregulation of the dopaminergic system – described as the ‘aberrant saliency’ hypothesis of psychosis^{2,10,11} – has been linked to the formation and maintenance of psychotic symptoms^{12–14}. It has been suggested that aberrant saliency attribution in psychosis is caused by faulty DA signalling in the striatum, possibly driven by dysregulation from the prefrontal cortex (PFC) and hippocampus¹⁵. In psychosis, there is increased synthesis and release of DA in the striatum, which is present even at the prodromal stages of the disease^{16,17}. Several studies reported reduced midbrain, striatal, and/or cortical processing of reward prediction errors^{18–21} and non-reward related prediction errors in psychosis²². In our recent work, we documented meso-cortico-striatal prediction error deficits, involving midbrain, striatum and right lateral frontal cortex in medicated psychosis patients at different stages^{20,22} and in unmedicated first episode psychosis patient and patients at clinical risk for developing psychosis²³. Another study in people at clinical risk of psychosis showed a relation between striatal reward prediction signal and psychotic symptoms²⁴.

Novel events activate DA neurons even in the absence of reward, which is associated with increased attention, memory and goal-directed behaviour⁶. Together with the fact that novelty exploration engages the areas of the brain involved in appetitive reinforcement learning (i.e. dopaminergic midbrain areas, striatum, medial prefrontal cortex)^{1,25}, novelty may be intrinsically rewarding, irrespective of the choice outcome, and can provide a ‘bonus’ for exploration²⁶. A recent study by Schott and colleagues²⁷ reported alterations in a fronto-limbic novelty processing

network in patients with acute psychosis. However, it is unclear whether novelty processing is disrupted in key dopaminergic regions for salience processing, such as the SN/VTA.

Emotional events are also salient, capture attention, enhance memory and modify behavioural responses²⁵. Presynaptic DA levels in the amygdala and SN/VTA predict brain activity in response to emotional salience²⁸. Schizophrenia and first episode psychosis patients have problems processing emotions, especially in the context of facial recognition²⁹. In a PET study, Taylor and colleagues³⁰ showed impaired neural processing in the ventral striatum in response to emotional salient events in chronic and acute psychosis patients. However, results regarding processing alterations in the amygdala were unclear. Furthermore, it is unknown whether processing of the dopaminergic SN/VTA is altered in psychosis in response to emotional salience.

Various studies suggest that SN/VTA neurons respond to a general form of salience (see reviews^{8,9}), often referred to as 'physical salience' or 'alerting' salience^{3,31}, which is triggered by unexpected sensory events including surprise, attention, arousal, or novelty. If dopaminergic signalling is generally compromised in psychosis, it then follows that there should be overlapping patterns of abnormal activation to various forms of salient stimuli in the dopaminergic midbrain and associated target regions in psychosis patients. Under an alternative account, salience processing may still be generally impaired in psychosis, but this may be secondary to dysfunction of diverse neural systems. In the current study, we, therefore, investigated brain responses in the SN/VTA and other target areas to four types of salience¹ – stimulus novelty, negative emotional salience, rareness (or 'contextual deviance'), and targetness (task-driven attentional salience) – in patients with early psychosis and healthy volunteers. By focussing on early psychosis, we can avoid confounds of exposure to dopaminergic medications and other effects of chronic illness. We used a fMRI paradigm that previously was shown to significantly activate parts of the midbrain, amygdala and striatum to various forms of salience.

Based on the potentially general role in salience signalling of DA neurons in the SN/VTA and the 'aberrant salience' hypothesis of psychosis, we hypothesised that psychosis patients demonstrate altered SN/VTA and striatal responses to novelty, negative emotional salience and targetness. Furthermore, we predicted to find group differences in the prefrontal cortex in response to novelty, in the amygdala in response to emotional salience, and in the hippocampus in responses to all forms of salience.

Methods

Subjects

We recruited 14 antipsychotic naive individuals with first-episode psychosis and active psychotic symptoms from the Cambridge, early intervention service for psychosis, CAMEO. Other inclusion criteria were as follows: age 16–35 years, meeting ICD-10 criteria for a schizophrenia spectrum disorder (F20, F22, F23, F25, F28, F29) or affective psychosis (F30.2, F31.2, F32.3). Age, gender and handedness matched healthy volunteers (n=37) were recruited as control subjects. Demographic and clinical characteristics of those participants included in the final analysis are presented in Table 1 and 2. None of the healthy volunteers reported any personal or family history of severe neurological, psychiatric or medical disorders. All participants had normal or corrected-to-normal vision, and had no contraindications to MRI scanning. At the time of the study, none of the participants were taking antipsychotic medication or had drug or alcohol dependence.

Before scanning, each of the participants underwent a general interview and clinical assessment using the Positive and Negative Symptom Scale (PANSS)³², the Scale for the Assessment of Negative Symptoms (SANS)³³ and the Global Assessment of Functioning (GAF)³⁴. The Beck Depression Inventory (BDI)³⁵ was used to assess depressive symptoms during the last two weeks. IQ was estimated using the Culture Fair Intelligence Test³⁶.

The study was approved by the Cambridgeshire 3 and National Health Service research ethics committee. All participants supplied written informed consent after they had read a complete description of the study.

Novelty task

We used a visual oddball paradigm³⁷ in order to investigate four types of salience, which were novelty, negative emotional salience, targetness and rareness. Participants were presented with a series of greyscale images of faces and outdoor scenes. 66% of those had a neutral emotional valence ('standard'). The four types of rare or contextually deviant events were randomly intermixed with these; each occurred with a probability of 8.3%. These deviant events were: neutral stimuli that required a motor response ('target oddball'); stimuli that evoked a negative

emotional response ('emotional oddball', angry face or image of car crash); novel stimuli ('novel oddball', different neutral images that appear only once); and neutral stimuli ('neutral oddball', neutral image of face or scene) (Figure 1). All participants completed four blocks with 60 trials each, resulting in a total of 240 trials (160 standard oddballs, and 20 each of target, neutral, emotional and novel oddballs). The task contained 50% faces and 50% outdoor scenes, this allowed prevention of category-specific habituation. These categories were chosen instead of abstract images to make stimulus exploration biologically relevant. Participants were introduced to the target stimulus prior to the experimental session for 4.5s, and they were required to make a simple button press with their right index finger in response to each of its subsequent appearances during the experiment within the fMRI-scanner. No motor responses were associated with any of the other stimulus types.

During the fMRI-experiment, the pictures were presented for 500ms followed by a white fixation cross on a grey background (grey value=127) using an inter-stimulus interval (ISI) of 2.7s. ISI was jittered with ± 300 ms (uniformly distributed). The order of stimuli was optimised for efficiency with regard to estimating stimulus-related haemodynamic responses.

All of the stimuli were taken from Bunzeck and Düzal ¹. The scalp hair and ears of faces were removed artificially, the outdoor scenes did not include faces. All pictures were grey scaled and normalised to a mean grey value of 127 (SD 75). The pictures were projected on to the centre of a screen, and the participants watched them through a mirror mounted on the head coil, subtending a visual angle of about 8°. The negative emotional scene depicted a negatively rated car accident (without any people). The contrast between stimuli allowed us to examine brain responses to the pure stimulus novelty ('novel' vs. 'neutral'), targetness ('target' vs. 'neutral'), negative emotional valence ('emotional' vs. 'neutral') and rareness/deviance per se ('neutral' vs. 'standard') (Figure 1). Irrespective of whether participants were left or right handed, they used their right hand to press the buttons on the button box for the target picture.

Behaviour analysis

An analysis of variance (ANOVA) was used to investigate group differences in pressing the buttons in response to the target stimuli and assessing reaction times. All runs in which participants missed

more than five button presses were excluded. Behavioural data were analysed using SPSS 21 (IBM Corp.).

fMRI data acquisition and analysis

A Siemens Magnetom Trio Tim syngo MR B17 operating at 3 T was used to collect imaging data. Gradient-echo echo-planar T2*-weighted images depicting BOLD contrast were acquired from 35 non-contiguous oblique axial plane slices of 2mm thickness to minimise signal drop-out in the ventral regions. We did not retrieve images of the whole brain; the superior part of the cortex was not imaged. The relaxation time was 1620ms, echo time was 30ms, flip angle was 65°, in-plane resolution was 3×3×3mm, matrix size was 64×64, field of view was 192×19mm, and bandwidth was 2442Hz/px. A total of 437 volumes per participant were acquired (35 slices each of 2mm thickness, inter-slice gap 1mm). The first five volumes were discarded to allow for T1 equilibration effects.

The data were analysed using FSL software (FMRIB's Software Library, www.fmrib.ox.ac.uk/fsl) version five. Participants' data (first-level analysis) were processed using the FMRI Expert Analysis Tool (FEAT). Functional images were realigned, motion corrected (MCFLIRT) and spatially smoothed with a 4mm full-width half-maximum Gaussian kernel. A high-pass filter was applied (120s cut-off). All images were registered to the whole-brain echo-planar image (EPI) (i.e., functional image with the whole-brain field of view), and then to the structural image of the corresponding participant (MPRAGE) and normalised to an MNI template. The five explanatory variables (EVs) that we used were the onset times of the standard, target, emotional, novel and neutral pictures. They were modelled as 1s events and convolved with a canonical double-gamma response function. We added a temporal derivative to the model to take into account possible variables in the haemodynamic response function. To capture residual movement-related artefacts, six covariates were used as regressors of no interest (three rigid-body translations and three rotations resulting from realignment). We used four contrasts: target-neutral, emotion-neutral, novel-neutral, and neutral-standard. In the second-level analysis, we averaged the four blocks of the task for each participant. For estimation of higher level, we used FEAT with FMRIB's Local Analysis of Mixed Effects (FLAME2).

Our main analysis was based on a region of interest (ROI) approach as follows. For novelty, our primary ROI was the dopaminergic SN/VTA using the probabilistic atlas³⁸, in which traditional anatomical segmentation was replicated using a seed-based functional connectivity approach and which provides a mask that consists of the SN and VTA, also used in our previous work²³. In our two secondary ROIs, we investigated the striatum (using a single hand-drawn mask), encompassing both associative and limbic striatum, based on operational criteria^{39,40}, and the right lateral frontal cortex (utilising a sphere, 10mm, centred at x=50, y=30, z=28, based on our previous work^{22,23}). For negative emotional salience, our two primary ROIs were the dopaminergic SN/VTA and the amygdala (anatomically derived mask using the Harvard-Oxford cortical and subcortical structural atlases). Our secondary ROI was the striatum. For targetness and rareness, we used the dopaminergic SN/VTA as our primary ROI and the striatum as our secondary ROI.

Within our ROIs, we used FSL randomise in order to test our hypothesis that on the contrast of interest activation pattern: controls>patients. Multiple regions were combined in one mask in order to control for multiple comparisons. For illustrational purposes only, we then extracted contrast values (contrast of parameter estimates, or COPEs in FSL) for each individual from voxels in which significant group differences were found (See bar chart in Figure 2B and 3B). In order to compare groups on a whole brain level, we used easythresh, a whole brain cluster corrected FSL analysis, with a threshold of $p < 0.05$, family-wise error (FWE) corrected, with cluster size $z > 2.6$ (results presented in Table 3).

Furthermore, parameter estimates are presented in the supplementary materials for all conditions and ROIs that show a significant effect. The parameter estimates show the driving condition for the group effects.

Movement differences during fMRI scan

As the task was relatively long (46min) and mostly passive (button presses were only required in 20 out of the total of 240 trials), we split the task into four blocks of 11.5min. Still many participants, independent of group, exhibited movements, possibly due to tiredness. We, therefore, excluded those blocks in which movement exceeded 3mm on average or 10mm maximum. In total, we identified 14 runs that fulfilled the movement exclusion criterion. Of those 14 runs, 10 were either from testing block 3 or 4, 2 were from testing block 2 and 2 were from

testing block 1. Additionally, three runs had to be interrupted and were therefore not completed by the participants. If for a single participant only one or two runs remained for analysis, we excluded this participant entirely. Based on these criteria, we excluded three controls and one psychosis patient entirely, as well as one run in five psychosis patients and one run in three controls.

In the remaining sample, we compared the two groups in two separate repeated measure ANOVAs across the four testing blocks, one for movement means and one for maximum (Supplementary Figure 1 and 2). We did not find any significant group, run or interactions effect, neither for mean movement nor for maximum movement (all $p > 0.1$).

We excluded those four individuals from all analyses within this study.

Results

Demographic and questionnaire results

The demographic and rating results are summarised in Tables 1 and 2. Bonferroni-corrected post-hoc tests demonstrated significant differences in IQ between controls and the psychosis group ($p = 0.02$). More importantly, however, the groups were matched in maternal educational, which was similar across both groups ($p = 0.36$). Alcohol consumption was significantly lower in psychosis patients compared to controls ($p = 0.002$).

Behavioural responses to pictures and reaction times

In order to maintain engagement with task, participants were required to press a button in response to the target picture. Due to technical problems, button presses were not recorded for eight controls, and one psychosis patient. Analysing the number of missed button presses and reaction times of the remaining participants across the four testing blocks (Supplementary Table 1), we did not find any significant effects for group, testing block or any interactions (all $p > 0.3$). On average, participants missed to press the button once (mean: 1.0 SE \pm 0.2) and generally required approximately 550ms (SE \pm 0.02) to make a response, which is consistent with previous findings¹. Due to the high performance across all groups, we included the data of the nine participants

without recorded button presses in all further analyses, in order to increase statistical power. We also repeated the analysis after excluding those participants. The results were very similar.

fMRI results

Novelty (novel-neutral oddballs)

In our primary ROI, the SN/VTA, psychosis patients showed a significant reduction of activation compared to the controls ($t=4.39$, $p=0.015$ FWE corrected, 10 voxels; maximal difference at $x=0$, $y=-20$, $z=-6$). See Figure 2A and B.

In our secondary ROIs, the striatum and the DLPFC, we found two significant clusters, both within the striatum, that showed reduced activation for psychosis patients (cluster 1: $t=4.51$, $p=0.03$ FWE corrected, 18 voxels; maximal difference at $x=8$, $y=-2$, $z=14$; cluster 2: $t=3.66$, $p=0.008$ FWE corrected, 10 voxels; maximal difference at $x=-8$, $y=-2$, $z=12$). See Figure 2A and B.

On whole brain analysis correcting for multiple comparisons (thresholded at $p<0.05$, $z>2.6$), psychosis patients showed a significant reduction of activation in the occipital lobe, including the lingual gyrus and fusiform gyrus, and the posterior cingulate gyrus (Table 3 and Supplementary material).

Negative emotional salience (emotion-neutral oddballs)

In our primary ROIs, the amygdala and SN/VTA, we found five clusters in which psychosis patients show significantly reduced activation, one in the right amygdala (cluster 1: $t=4.06$, $p=0.01$ FWE corrected, 215 voxels; maximal difference at $x=22$, $y=0$, $z=-14$) and four in the SN/VTA (cluster 2: $t=3.45$, $p=0.025$ FWE corrected, 50 voxels; maximal difference at $x=-12$, $y=-16$, $z=-6$; cluster 3: $t=4.37$, $p=0.02$ FWE corrected, 22 voxels; maximal difference at $x=0$, $y=-20$, $z=-4$; cluster 4: $t=2.69$, $p=0.049$ FWE corrected, 2 voxels; maximal difference at $x=-10$, $y=-22$, $z=-20$; cluster 5: $t=2.68$, $p=0.049$ FWE corrected, 1 voxels; maximal difference at $x=-12$, $y=-26$, $z=-20$). See Figure 3A and B.

In our secondary ROI, the striatum, psychosis patients showed a significant reduction of activation compared to the controls in four clusters within the striatum (cluster 1: $t=4.69$, $p=0.002$ FWE corrected, 1144 voxels; maximal difference at $x=12$, $y=14$, $z=12$; cluster 2: $t=4.11$, $p=0.008$ FWE

corrected, 320 voxels; maximal difference at $x=-10$, $y=-6$, $z=-16$; cluster 3: $t=3.53$, $p=0.018$ FWE corrected, 309 voxels; maximal difference at $x=-12$, $y=6$, $z=-14$; cluster 4: $t=2.58$, $p=0.048$ FWE corrected, 3 voxels; maximal difference at $x=-14$, $y=22$, $z=-2$). See Figure 3A and B.

On whole brain analysis correcting for multiple comparisons (thresholded at $p<0.05$, $z>2.6$), psychosis patients showed a significant reduction of activation in thalamus, lingual gyrus, caudate and the anterior cingulate gyrus (Table 3).

Targetness (target-neutral oddballs)

In our primary ROI, the SN/VTA, psychosis patients showed a marginal reduction of activation compared to the controls ($t=3.84$, $p=0.066$ FWE corrected, 5 voxels; maximal difference at $x=0$, $y=-22$, $z=-8$).

On whole brain analysis correcting for multiple comparisons (thresholded at $p<0.05$, $z>2.6$), psychosis patients showed a significant reduction of activation in occipital lobe, including the fusiform gyrus and lingual gyrus, the cerebellum (vermis VI and crus II) and the anterior cingulate gyrus (Table 3).

Rareness (neutral-standard oddballs)

Our ROI analysis in the SN/VTA was not significant. Similarly, on the whole brain analysis, there were no group differences that passed our statistical threshold, corrected for multiple comparisons.

Correlations of symptom score and brain responses in patients

We found positive correlations between SN/VTA signalling and the total score of negative symptoms (SANS; $\rho=0.66$, $p=0.047$; Figure 4A), and the hallucinatory behaviour (P1; $\rho=0.77$, $p=0.002$; Figure 4B) in response to novelty.

Furthermore, in response to negative emotional salience, we found a positive correlations between striatal signalling and the total score of positive symptoms (PANS positive; $\rho=-0.61$,

$p=0.028$; Figure 4C), a positive correlation between amygdala signalling and the Beck Depression Inventory (BDI; $\rho=0.64$, $p=0.048$; Figure 4D), and a positive correlation between amygdala signalling and delusional behaviour (P3; $\rho=0.59$, $p=0.035$; Figure 4E). Correlations were computed using a nonparametric Spearman's correlation.

We emphasize that we are presenting exploratory correlation analyses (given the small sample size); when controlling for multiple comparisons using a strict Bonferroni-approach only the correlation between SN/VTA signalling and hallucinatory behaviour in response to novelty would be retained as statistically significant.

Discussion

We investigated brain responses to four different types of salience, including novelty, negative emotional salience, targetness and rareness in healthy volunteers and first episode psychosis patients. In psychosis patients, our results show reduced SN/VTA (primary ROI), striatal (secondary ROI) and cingulate (whole brain) signalling to novelty, reduced SN/VTA and amygdala (both primary ROIs), striatal (secondary ROI) and cingulate (whole brain) signalling to negative emotional salience, and reduced SN/VTA (primary ROI) and cingulate (whole brain) signalling to targetness. These results are unconfounded by antipsychotic medication as we tested an antipsychotic naïve patient sample. This study is first to present SN/VTA, striatal and cingulate signalling alterations in psychosis in response to different forms of salience, all in absence of reward. Our results, therefore, extend findings reporting midbrain and cortical abnormalities in response to reward prediction error signals in medicated and unmedicated psychosis patients at different stages of the disease^{20,22,23}, fronto-limbic connectivity alterations in response to novelty in acute, unmedicated psychosis patients²⁷ and striatal abnormalities in response to emotional salience in chronic, medicated and a small sample of unmedicated acute psychosis patients³⁰. Our results indicate that salience processing is generally impaired in patients with psychosis, mainly affecting the dopaminergic SN/VTA, the striatum and the cingulate gyrus.

The 'aberrant salience' hypothesis of psychosis postulates that dysregulated dopaminergic signalling in the mesolimbic system in people with psychosis results in the attribution of salience to irrelevant or non-significant stimuli^{11,41}. These unusually salient representations may lead to the formation of hallucinations or generally altered perceptions. As a result, patients may

construct delusional explanations in order to explain these altered perceptions. Abnormal salience attribution is present from early and even prodromal stages of the disease^{20,24}. Usually, this theory is investigated in the context of motivational salience^{20,23} using reward prediction paradims. Here, however, salience was investigated in the absence of the reward, and constitutes an intrinsic property of the stimulus, rather than learned associations². In healthy subjects, novelty identification is processed by a number of brain regions, including SN/VTA, striatum, parietal, and prefrontal cortices^{1,25,42}. Consistent with this, we observed group differences in the SN/VTA and the striatum in response to novelty. Our findings extend recent results of a study by Schott and colleagues²⁷. Although, this study did not detect clear differences in the midbrain or striatum, they found an increase in functional connectivity of the hippocampus and the orbitofrontal cortex with the rostral anterior cingulate gyrus and the ventral striatum.

Our study also demonstrates significantly reduced activation in response to negative emotional salience compared to controls in right amygdala, the SN/VTA and the striatum in psychosis patients compared to controls. This result is consistent with the literature indicating reduced arousal to emotional stimuli⁴³. Our study also supports findings of a PET study indicating tonic over-activation of the amygdala and impaired striatal signalling during emotional salience processing³⁰. Jabbi and colleagues²⁸ reported increased dopaminergic releases in the amygdala and midbrain in response to emotional salience, which might be altered in psychosis. Our results, furthermore, reveal reduced activation in the thalamus of psychosis patients compared to healthy controls for negative emotional salience. The thalamus is a relay station of multiple neural connections and has dopaminergic synapses. Consistent with this and our findings, a study by Hadley and colleagues⁴⁴ reported reduced connectivity between the VTA/midbrain and the thalamus in schizophrenia patients.

In addition to reduced SN/VTA processing in response to novelty and negative emotional salience, we also found reduced signalling in response to targetness in patients. Therefore, our study is first to provide clear evidence for reduced SN/VTA processing in response to these different forms of non-motivational salience in psychosis. Together with the striatal findings, the findings in the patients support the aberrant salience hypothesis for general salience dysfunction. As both the midbrain and the striatum are dopaminergic key regions, it also provides supporting evidence for a dysregulated dopaminergic system during salience processing in psychosis². In healthy controls, Bunzeck and Düzal¹ reported significantly enhanced SN/VTA activation in response to novelty, and

also positive, but not statistically significant, activation in response to negative emotional salience, providing supportive evidence for a differential activation of the SN/VTA in response to novelty. Using a larger sample size than previous studies and a slightly different regional specification used for the SN/VTA, we, however, find significant SN/VTA activation to novelty, negative emotional salience and targetness in controls, although activation in response to novelty is greatest. Our results, therefore, support the view of general processing of salience in the SN/VTA ^{8,9}, including novelty, negative emotional salience and targetness. An account reconciling these results with those of Bunzeck and Düzal ¹, may be that SN/VTA is highly sensitive to novelty, but is also sensitive to other forms of salience. On the other hand, our activation is slightly more rostral as compared to Bunzeck and Düzal ¹ but still lies within the SN/VTA ROI as defined by Murty et al.³⁸. Given the spatial resolution of the current study, we cannot determine within this region whether the exact same neurons activate to diverse or specific stimuli ⁴⁵. However, future studies should employ higher resolution to answer these questions.

Moreover, the whole brain analysis revealed reductions in anterior and posterior cingulate gyrus activity in psychosis patients compared to healthy controls in response to novelty, negative emotional salience and targetness. The cingulate cortex, as part of the salience network, has been found to show aberrant connectivity and structure in psychosis ^{46,47}. We previously showed that the severity of psychotic symptoms in healthy volunteers induced by methamphetamine, significantly correlated with the degree of drug induced disruption of the incentive value signal disruption in the posterior cingulate cortex, suggesting a dopamine mediated mechanism in this region ⁴⁸. A study by Gradin and colleagues ⁴⁹ reported dysfunctional connectivity between the salience network and the midbrain during a reward learning task leading to abnormal reward processing in schizophrenia patients. Furthermore, structural alterations have consistently been documented in patients with psychosis ⁵⁰⁻⁵². Therefore, our results may provide a first indication that possible dysfunctional interactions between the salience network and the SN/VTA may also lead to aberrant processing of different types of salience. Furthermore, in the whole brain analysis we found reduced cerebellar activity in response to targetness in patients compared to controls. This finding can be explained by a potential inability to appropriately generate and use efference copies to predict sensory consequences of motor events. The generation of the efference copy has been localised in the cerebellum ^{53,54} and has been linked to action prediction failures in schizophrenia (see review ⁵⁵).

We expected to see increased activity in the visual cortices due to the use of a visual oddball paradigm across all stimuli ^{42,56}. Here, we observed group differences in response to novelty, negative emotional salience and targetness, this is in line with impaired visual perceptions often reported in schizophrenia (see review ⁵⁷). In contrast with the previous literature, which reported hippocampal activity in response to salience ^{1,27,58}, we did not find any activity in the hippocampus, neither in a group difference nor in a healthy volunteers separately. It is possible that signal in this region may not have been reliably captured during fMRI scanning.

In an exploratory analysis, we found positive correlations between SN/VTA activity to novelty and symptom scores for hallucinations and negative symptoms, between amygdala signalling to negative emotional salience and the Beck Depression Inventory and delusions, and between striatal signalling and total score for positive symptoms. However, when controlling for multiple comparisons, only the correlation between SN/VTA activation to novelty and hallucinations remains significant. Here, we would have rather predicted a negative correlation, showing a decrease of SN/VTA activation with increased symptom scores, especially given the group difference that showed lower activation in the patient group as a whole. It is thought-provoking that in this small study, several forms of salience showed reduced activation across regions in the average patient, but greater activation associated with greater symptoms. One speculation is that reduced activation (between group results) could reflect a trait abnormality, and superimposed on this are state dysfunctions closely linked to symptom expression. However, symptom correlations with functional imaging have often yielded inconsistent results in schizophrenia research ⁵⁹. One of the most important difficulties to reliably detect symptom correlations is gathering a large enough sample, and our small sample size of 14 patients is a clear limitation to assess symptom correlations. However, we report it to generate future hypotheses and to be available for future meta-analysis.

In conclusion, this study provides concise evidence for aberrant SN/VTA, striatal and cingulate signalling during non-motivational salience processing in a sample of antipsychotic naïve early psychosis patients. The results extend previous research by giving supportive evidence for the aberrant salience hypothesis of psychosis involving motivational and non-motivational forms of salience and the involvement of dopaminergic dysregulation in the development of psychotic disorder.

References

- 1 Bunzeck N, Düzel E. Absolute Coding of Stimulus Novelty in the Human Substantia Nigra/VTA. *Neuron* 2006; **51**: 369–379.
- 2 Winton-Brown TT, Fusar-Poli P, Ungless MA, Howes OD. Dopaminergic basis of salience dysregulation in psychosis. *Trends Neurosci.* 2014; **37**: 85–94.
- 3 Schultz W. Predictive reward signal of dopamine neurons. *J Neurophysiol* 1998; **80**: 1–27.
- 4 Schultz W. Dopamine reward prediction-error signalling: A two-component response. *Nat. Rev. Neurosci.* 2016; **17**: 183–195.
- 5 Pessiglione M, Seymour B, Flandin G, Dolan RJ, Frith CD. Dopamine-dependent prediction errors underpin reward-seeking behaviour in humans. *Nature* 2006; **442**: 1042–1045.
- 6 Horvitz JC. Mesolimbocortical and nigrostriatal dopamine responses to salient non- reward events. *Neuroscience.* 2000; **96**: 651–656.
- 7 Bunzeck N, Doeller CF, Dolan RJ, Düzel E. Contextual interaction between novelty and reward processing within the mesolimbic system. *Hum Brain Mapp* 2012; **33**: 1309–1324.
- 8 Ungless MA. Dopamine: The salient issue. *Trends Neurosci.* 2004; **27**: 702–706.
- 9 Bromberg-Martin ES, Matsumoto M, Hikosaka O. Dopamine in Motivational Control: Rewarding, Aversive, and Alerting. *Neuron.* 2010; **68**: 815–834.
- 10 Howes OD, Nour MM. Dopamine and the aberrant salience hypothesis of schizophrenia. *World Psychiatry* 2016; **15**: 3–4.
- 11 Kapur S. Psychosis as a state of aberrant salience: A framework linking biology, phenomenology, and pharmacology in schizophrenia. *Am. J. Psychiatry.* 2003; **160**: 13–23.
- 12 Abboud R, Roiser JP, Khalifeh H, Ali S, Harrison I, Killaspy HT *et al.* Are persistent delusions in schizophrenia associated with aberrant salience? *Schizophr Res Cogn* 2016; **4**: 32–38.
- 13 Corlett PR, Taylor JR, Wang XJ, Fletcher PC, Krystal JH. Toward a neurobiology of delusions. *Prog. Neurobiol.* 2010; **92**: 345–369.
- 14 Murray GK, Corlett PR, Fletcher PC. The neural underpinnings of associative learning in

- health and psychosis: How can performance be preserved when brain responses are abnormal? *Schizophr. Bull.* 2010; **36**: 465–471.
- 15 Lodge DJ, Grace AA. Aberrant Hippocampal Activity Underlies the Dopamine Dysregulation in an Animal Model of Schizophrenia. *J Neurosci* 2007; **27**: 11424–11430.
- 16 Howes OD, Egerton A, Allan V, McGuire P, Stokes P, Kapur S. Mechanisms Underlying Psychosis and Antipsychotic Treatment Response in Schizophrenia: Insights from PET and SPECT Imaging. *Curr Pharm Des* 2009; **15**: 2550–2559.
- 17 Howes OD, Montgomery AJ, Asselin MC, Murray RM, Valli I, Tabraham P *et al.* Elevated striatal dopamine function linked to prodromal signs of schizophrenia. *Arch Gen Psychiatry* 2009; **66**: 13–20.
- 18 Gradin VB, Kumar P, Waiter G, Ahearn T, Stickle C, Milders M *et al.* Expected value and prediction error abnormalities in depression and schizophrenia. *Brain* 2011; **134**: 1751–1764.
- 19 Morris RW, Vercammen A, Lenroot R, Moore L, Langton JM, Short B *et al.* Disambiguating ventral striatum fMRI-related BOLD signal during reward prediction in schizophrenia. *Mol Psychiatry* 2012; **17**: 235, 280–9.
- 20 Murray G, Corlett P, Clark L, Pessiglione M, Blackwell A, Honey G *et al.* Substantia nigra / ventral tegmental reward prediction error disruption in psychosis. *Mol Psychiatry* 2008; **13**: 1–18.
- 21 Schlagenhauf F, Huys QJM, Deserno L, Rapp MA, Beck A, Heinze HJ *et al.* Striatal dysfunction during reversal learning in unmedicated schizophrenia patients. *Neuroimage* 2014; **89**: 171–180.
- 22 Corlett PR, Murray GK, Honey GD, Aitken MRF, Shanks DR, Robbins TW *et al.* Disrupted prediction-error signal in psychosis: Evidence for an associative account of delusions. *Brain* 2007; **130**: 2387–2400.
- 23 Ermakova AO, Knolle F, Justicia A, Bullmore ET, Jones PJ, Robbins TW *et al.* Abnormal reward prediction error signalling in antipsychotic naïve individuals with first episode psychosis or clinical risk for psychosis. *bioRxiv* 2017.

- 24 Roiser JP, Howes OD, Chaddock CA, Joyce EM, McGuire P. Neural and behavioral correlates of aberrant salience in individuals at risk for psychosis. *Schizophr Bull* 2013; **39**: 1328–1336.
- 25 Wittmann BC, Bunzeck N, Dolan RJ, Düzel E. Anticipation of novelty recruits reward system and hippocampus while promoting recollection. *Neuroimage* 2007; **38**: 194–202.
- 26 Kakade S, Dayan P. Dopamine: Generalization and bonuses. *Neural Networks*. 2002; **15**: 549–559.
- 27 Schott B, Voss M, Wagner B, Wustenberg T, Düzel E, Behr J. Fronto-limbic novelty processing in acute psychosis: Inefficient hippocampal encoding and potential implications for delusions. *Eur Arch Psychiatry Clin Neurosci* 2015; **1**): S113.
- 28 Jabbi M, Nash T, Kohn P, Ianni A, Rubinstein D, Holroyd T *et al.* Midbrain presynaptic dopamine tone predicts sustained and transient neural response to emotional salience in humans: fMRI, MEG and FDOPA PET. *Mol Psychiatry* 2013; **18**: 4–6.
- 29 Savla GN, Vella L, Armstrong CC, Penn DL, Twamley EW. Deficits in domains of social cognition in schizophrenia: a meta-analysis of the empirical evidence. *Schizophr Bull* 2013; **39**: 979–992.
- 30 Taylor SF, Phan KL, Britton JC, Liberzon I. Neural response to emotional salience in schizophrenia. *Neuropsychopharmacology* 2005; **30**: 984.
- 31 Lisman JE, Grace AA. The hippocampal-VTA loop: Controlling the entry of information into long-term memory. *Neuron*. 2005; **46**: 703–713.
- 32 Kay SR, Fiszbein A, Opler LA. The positive and negative syndrome scale (PANSS) for schizophrenia. *Schizophr Bull* 1987; **13**: 261–76.
- 33 Andreasen NC. Scale for the Assessment of Negative Symptoms (SANS). *Br. J. Psychiatry*. 1989; **155**: 53–58.
- 34 Hall RCW. Global Assessment of Functioning: A Modified Scale. *Psychosomatics* 1995; **36**: 267–275.
- 35 Beck AT, Steer RA, Brown GK. Manual for the Beck depression inventory-II. *San Antonio, TX Psychol Corp* 1996; : 1–82.

- 36 Cattell RB, Cattell AKS. *Measuring intelligence with the culture fair tests*. Institute for Personality and Ability Testing, 1973.
- 37 Bunzeck N, Schütze H, Stallforth S, Kaufmann J, Düzel S, Heinze HJ *et al*. Mesolimbic novelty processing in older adults. *Cereb Cortex* 2007; **17**: 2940–2948.
- 38 Murty VP, Shermohammed M, Smith D V, Carter RM, Huettel SA, Adcock RA. Resting state networks distinguish human ventral tegmental area from substantia nigra. *Neuroimage* 2014; **100**: 580–589.
- 39 Mawlawi O, Martinez D, Slifstein M, Broft A, Chatterjee R, Hwang DR *et al*. Imaging human mesolimbic dopamine transmission with positron emission tomography: I. Accuracy and precision of D(2) receptor parameter measurements in ventral striatum. *J Cereb Blood Flow Metab* 2001; **21**: 1034–57.
- 40 Martinez D, Slifstein M, Broft A, Mawlawi O, Hwang D-R, Huang Y *et al*. Imaging human mesolimbic dopamine transmission with positron emission tomography. Part II: amphetamine-induced dopamine release in the functional subdivisions of the striatum. *J Cereb Blood Flow Metab* 2003; **23**: 285–300.
- 41 Jensen J, Kapur S. Salience and psychosis: moving from theory to practise. *Psychol Med* 2009; **39**: 197.
- 42 Ranganath C, Gregor R. Neural mechanisms for detecting and remembering novel events. *Nat Rev Neurosci* 2003; **4**: 193.
- 43 Haralanova E, Haralanov S, Beraldi A, Möller H-J, Hennig-Fast K. Subjective emotional over- arousal to neutral social scenes in paranoid schizophrenia. *Eur Arch Psychiatry Clin Neurosci* 2012; **262**: 59–68.
- 44 Hadley JA, Nenert R, Kraguljac N V., Bolding MS, White DM, Skidmore FM *et al*. Ventral tegmental area/midbrain functional connectivity and response to antipsychotic medication in schizophrenia. *Neuropsychopharmacology* 2014; **39**: 1020–1030.
- 45 Fiorillo CD, Yun SR, Song MR. Diversity and Homogeneity in Responses of Midbrain Dopamine Neurons. *J Neurosci* 2013; **33**: 4693–4709.
- 46 White TP, Joseph V, Francis ST, Liddle PF. Aberrant salience network (bilateral insula and

- anterior cingulate cortex) connectivity during information processing in schizophrenia. *Schizophr Res* 2010; **123**: 105–115.
- 47 Palaniyappan L, Liddle PF. Does the salience network play a cardinal role in psychosis? An emerging hypothesis of insular dysfunction. *J. Psychiatry Neurosci.* 2012; **37**: 17–27.
- 48 Bernacer J, Corlett PR, Ramachandra P, McFarlane B, Turner DC, Clark L *et al.* Methamphetamine-induced disruption of Frontostriatal reward learning signals: Relation to psychotic symptoms. *Am J Psychiatry* 2013; **170**: 1326–1334.
- 49 Gradin VB, Waiter G, O'Connor A, Romaniuk L, Stickle C, Matthews K *et al.* Salience network-midbrain dysconnectivity and blunted reward signals in schizophrenia. *Psychiatry Res - Neuroimaging* 2013; **211**: 104–111.
- 50 Koo M-S, Levitt JJ, Salisbury DF, Nakamura M, Shenton ME, McCarley RW. A Cross-Sectional and Longitudinal Magnetic Resonance Imaging Study of Cingulate Gyrus Gray Matter Volume Abnormalities in First-Episode Schizophrenia and First-Episode Affective Psychosis. *Arch Gen Psychiatry* 2008; **65**: 746.
- 51 Radua J, Borgwardt S, Crescini A, Mataix-Cols D, Meyer-Lindenberg A, McGuire PK *et al.* Multimodal meta-analysis of structural and functional brain changes in first episode psychosis and the effects of antipsychotic medication. *Neurosci. Biobehav. Rev.* 2012; **36**: 2325–2333.
- 52 Borgwardt SJ, McGuire PK, Aston J, Berger G, Dazzan P, Gschwandtner U *et al.* Structural brain abnormalities in individuals with an at-risk mental state who later develop psychosis. *Br J Psychiatry* 2007; **191**. doi:10.1192/bjp.191.51.s69.
- 53 Blakemore S-J, Frith CD, Wolpert DM. The cerebellum is involved in predicting the sensory consequences of action. *Neuroreport* 2001; **12**: 1879–1884.
- 54 Knolle F, Schröger E, Baess P, Kotz SA. The Cerebellum Generates Motor-to-Auditory Predictions: ERP Lesion Evidence. *J Cogn Neurosci* 2012; **24**: 698–706.
- 55 Ford JM, Mathalon DH. Anticipating the future: Automatic prediction failures in schizophrenia. *Int. J. Psychophysiol.* 2012; **83**: 232–239.
- 56 Wendt J, Weike AI, Lotze M, Hamm AO. The functional connectivity between amygdala and

extrastriate visual cortex activity during emotional picture processing depends on stimulus novelty. *Biol Psychol* 2011; **86**: 203–209.

- 57 Butler PD, Silverstein SM, Dakin SC. Visual Perception and Its Impairment in Schizophrenia. *Biol. Psychiatry*. 2008; **64**: 40–47.
- 58 Bunzeck N, Guitart-Masip M, Dolan RJ, Duzel E. Pharmacological dissociation of novelty responses in the human brain. *Cereb Cortex* 2014; **24**: 1351–1360.
- 59 Mathalon DH, Ford JM. Neurobiology of Schizophrenia: Search for the Elusive Correlation with Symptoms. *Front Hum Neurosci* 2012; **6**. doi:10.3389/fnhum.2012.00136.

Tables and Figures

Table 1: Sample characteristics for healthy controls, and patients with first-episode psychosis (FEP).

Variable	Controls (n=34)		FEP (n=13)		Group Statistics		
	Mean	SD	Mean	SD	T	df	p
Age (years)	22.85	3.3	23.85	6.3	0.21	47	0.48
Gender (male/female)	18/16		8/6		0.45	47	0.61
Handedness (right/left)	27/7		9/3 (1 missing)		0.06	46	0.76
IQ	119.4	18.2	105.1	16.2	3.03	47	0.02
Level of education	2.47	0.8	2.38	1.1	0.51	47	0.77
Mother's level of education	2.36	1.1	2.73	1.3	0.8	43	0.36
Smoking (yes/no)	0.32	0.5	0.54	0.5	1.61	46	0.18
Alcohol	2.6	0.7	1.54	1.5	3.34	46	0.002
Cannabis	0.85	0.8	1.38	1.6	2.08	45	0.12
Hallucinogens	0.21	0.5	0.46	0.7	1.32	46	0.15
Stimulants	0.41	0.7	0.77	0.8	1.87	46	0.15
Depressants	0.06	0.2	0.23	0.6	1.33	46	0.16

Education was measured on a 5-point scale (from no education to higher university degree). Intelligence was measured with the Culture Fair Intelligence Test. Smoking: 0=non-smoker, 1=smoker. Substance use was measured on a 5-point scale (from 0=never used to 5=daily user). **Bold:** significant differences.

Table 2: Clinical assessment of the participants.

Variable	Controls (n=34)		FEP (n=13)		Group statistics		
	Mean	SD	Mean	SD	t	df	p
PANSS positive	0.97	0.2	2.2	0.7	10.1	45	<0.001
P1	0.97	0.2	3.2	1.6	7.86	45	<0.001
P2	0.97	0.2	1.3	0.9	2.22	45	<0.001
P3	0.97	0.2	3.4	1.6	9.06	45	<0.001
SANS score	0.09	0.3	0.3	0.6	1.6	45	0.116
BDI	3.4	3.9	27.8	10.7	11.1	41	<0.001

FEP, first episode psychosis patients. BDI, Beck's Depression Inventory. PANSS, Positive and negative syndrome scale for schizophrenia. P1, delusions, P2 conceptual disorganisation (thought disorder), P3, hallucinatory behaviour. SANS, Scale for Assessment of Negative Symptoms. **Bold:** significant differences.

Table 3: fMRI Activations from whole brain analysis.

Anatomical structure	Hemisphere	Cluster size (voxel)	P value (FWE corr)	Peak score	Peak coordinates		
					Z	X	Y
Novel – Neutral Oddball (Novelty)							
Occipital lobe, lateral and fusiform gyrus	L	256	<0.001	4.1	-36	-90	-18
Occipital lobe (V1)	L/R	240	<0.001	3.88	8	-92	-12
Occipital lobe, fusiform gyrus	R	101	0.014	3.58	18	-86	-18
Posterior cingulate gyrus	L/R	92	0.024	3.67	0	-40	38
Emotional – Neutral Oddball (Negative emotional salience)							
Thalamus	L/R	658	<0.001	3.88	-2	-22	6
Lingual gyrus	R	492	<0.001	3.57	6	-78	0
Anterior cingulate gyrus (medial)	L/R	150	0.005	3.76	2	28	26
Anterior cingulate gyrus (posterior)	L/R	139	0.008	3.43	2	4	42
Caudate	R	138	0.008	4.15	12	14	10
Target – Neutral Oddball (Targetness)							
Occipital lobe, fusiform gyrus and lingual gyrus	R	184	<0.001	3.7	10	-90	-12
Anterior cingulate gyrus (posterior)	L/R	131	0.005	3.69	10	0	40
Cerebellum, Vermis VI and Crus II	L/R	110	0.015	3.78	-2	-78	-24
Neutral – Standard Oddball (Rareness)							
n.s.							
Summary of fMRI results for the clusters at the whole-brain level, FWE cluster-corrected results, $z=2.6$, $p<0.01$. Bold: significant differences.							

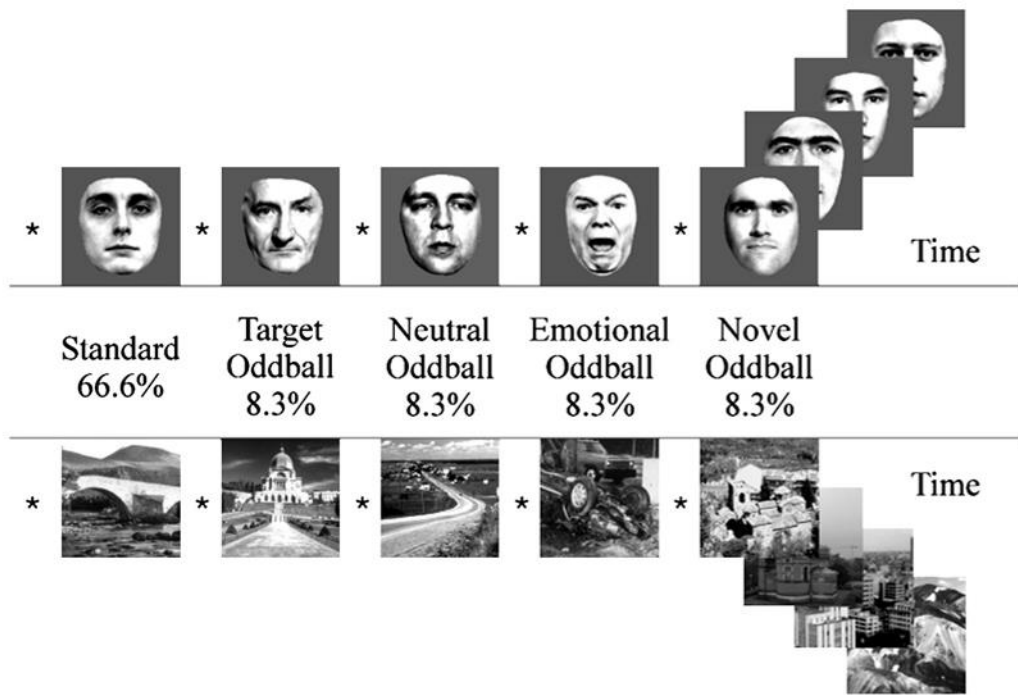


Figure 1. Visual oddball paradigm. Participants are presented with a series of greyscale images of faces and outdoor scenes. 66.6% of those had a neutral emotional valence ('standard'). The remaining 33.4% consisted of four types of rare or contextually deviant events, which were randomly intermixed with the standard stimuli; each occurred with a probability of 8.3%. These deviant events were: neutral stimuli that required a motor response ('target oddball'); stimuli that evoked a negative emotional response ('emotional oddball', angry face or image of car crash); novel stimuli ('novel oddball', different neutral images that appear only once); and neutral stimuli ('neutral oddball', neutral image of face or scene).

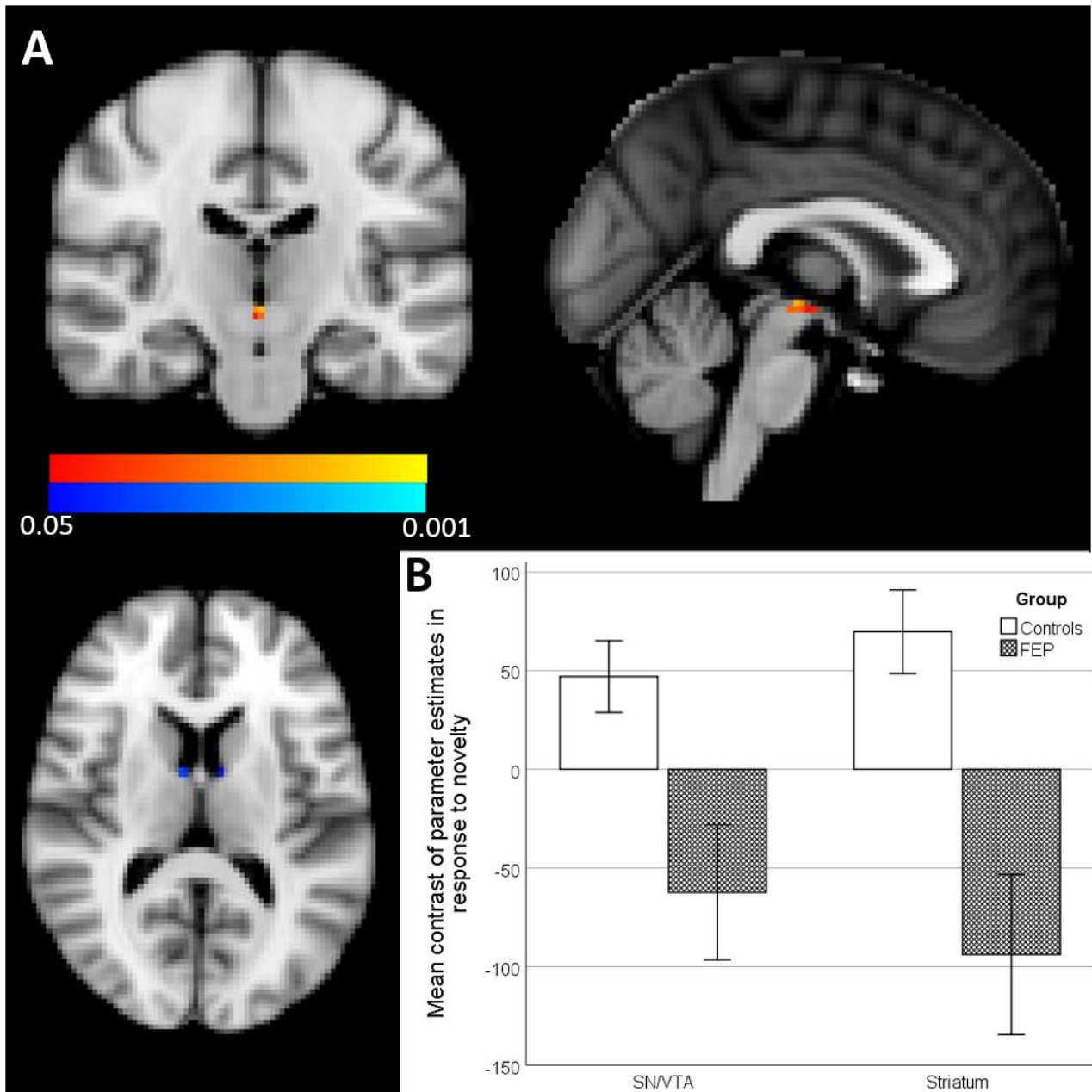


Figure 2. Group effects in primary and secondary region of interest (ROI) analysis of activation associated with novelty processing. A) Primary ROI (colour coding yellow-red): SN/VTA, maximal difference at $x=0, y=-20, z=-6$. Secondary ROI (colour coding light-blue-dark-blue), striatum, two clusters maximal difference at $x=8, y=-2, z=14$ and $x=-8, y=-2, z=12$ ($p<0.05$ FWE corrected). B) Bar chart shows the mean contrast (COPEs, FSL) values to group, extracted from significant clusters determined by FSL randomise ANOVA results of primary and secondary ROI analysis. Multiple significant clusters are combined. Error bars show ± 1 SE.

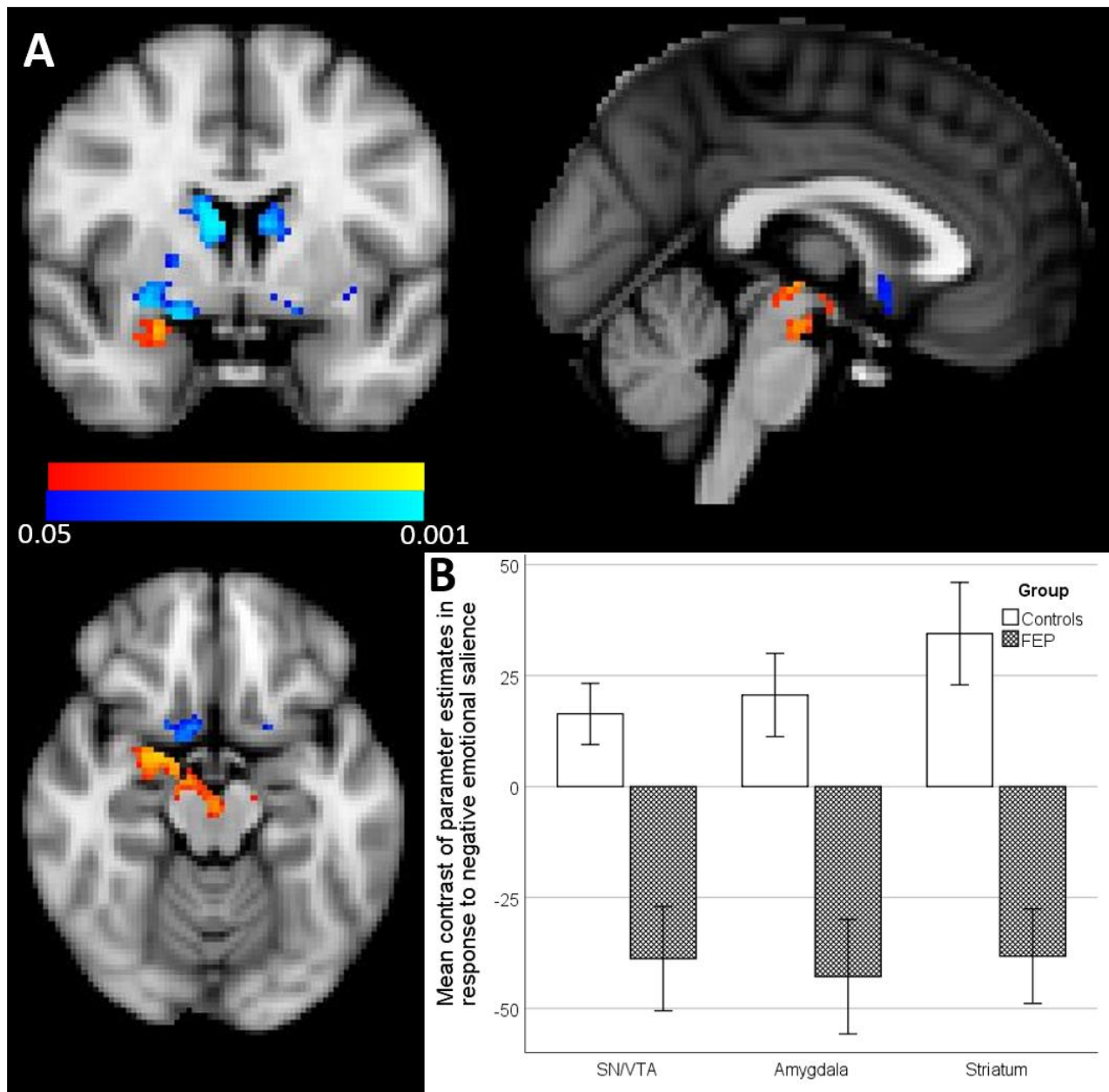


Figure 3. Group effects in primary and secondary region of interest (ROI) analysis of activation associated with negative emotional salience processing. A) Primary ROI (colour coding red-yellow): SN/VTA, four clusters maximal differences at $x=-12, y=-16, z=-6$; $x=0, y=-20, z=-4$; $x=-10, y=-22, z=-20$; and $x=-12, y=-26, z=-20$, and amygdala maximal differences at $x=22, y=0, z=-14$. Secondary ROI (colour coding blue-light-blue), striatum, four clusters, maximal differences at $x=12, y=14, z=12$; $x=-10, y=-6, z=-16$; $x=-12, y=6, z=-14$ and $x=-14, y=22, z=-2$ ($p < 0.05$ FWE corrected). B) Bar chart shows the mean contrast (COPEs, FSL) values to group, extracted from significant clusters determined by FSL randomise ANOVA results of primary and secondary ROI analysis. Multiple significant clusters are combined. Error bars show ± 1 SE.

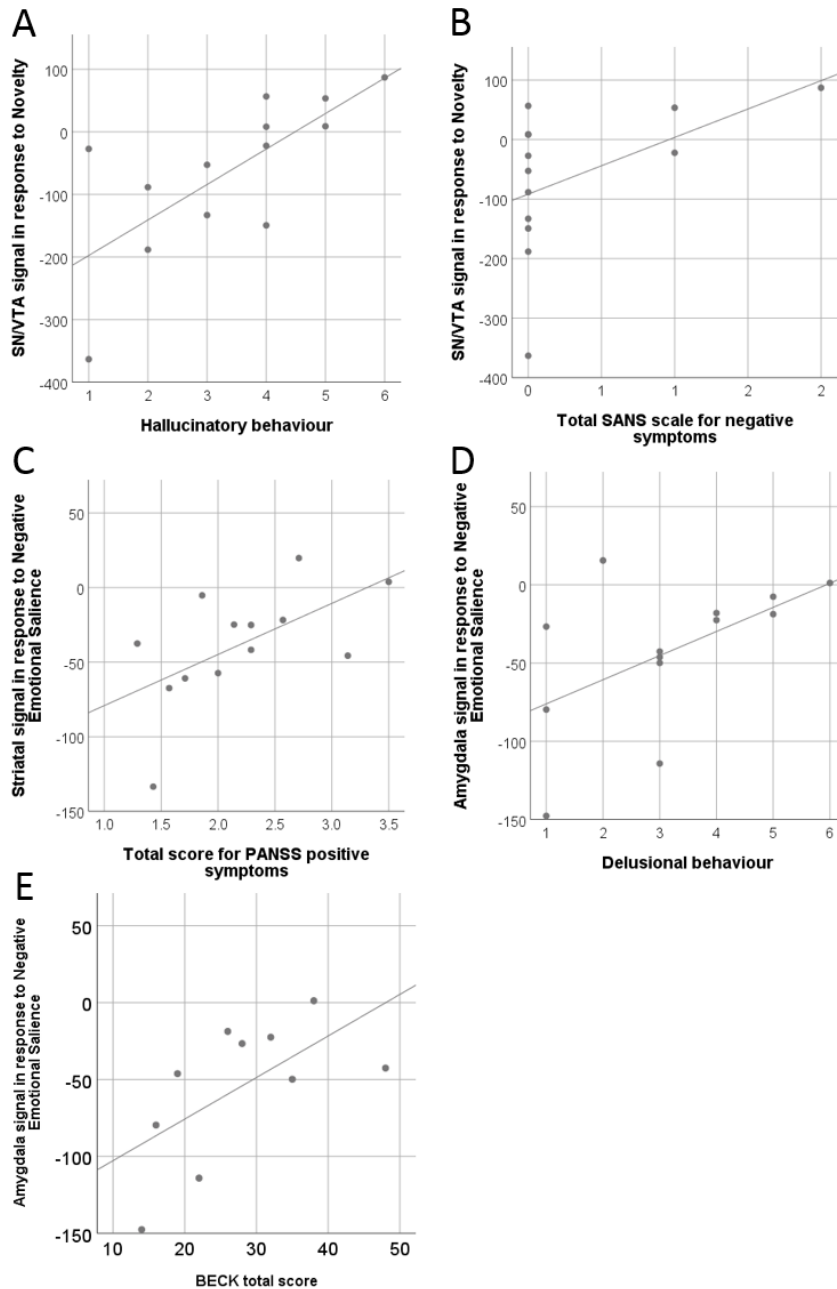


Figure 4. Correlation between signal strength and symptom score in patients. Panels A and B show significant symptom correlations with activation in the SN/VTA in response to novelty. Panel C shows significant correlation between total PANSS score and striatal activation in response to negative emotional salience. Panel D and E show significant symptom correlations with activation in the amygdala in response to negative emotional salience. Lines indicate fitted regression lines.

Funding and Disclosure

Supported by a MRC Clinician Scientist [G0701911] and an Isaac Newton Trust award to GKM; by the University of Cambridge Behavioural and Clinical Neuroscience Institute, funded by a joint award from the Medical Research Council [G1000183] and Wellcome Trust [093875/Z/10/Z]; by awards from the Wellcome Trust [095692] and the Bernard Wolfe Health Neuroscience Fund to PCF, and by awards from the Wellcome Trust Institutional Strategic Support Fund [097814/Z/11], and Cambridge NIHR Biomedical Research Centre.

PCF has consulted for GlaxoSmithKline and Lundbeck and received compensation.

FK, AOE, GKM, NB, ED, and AJD have no conflicts of interest.

Acknowledgements

The authors are grateful for the help of clinical staff in CAMEO for help with participant recruitment and Wolfson Brain Imaging Centre staff for MRI data collection support.