

Is the Naked mole-rat a domestic animal?

Guillermo Serrano Nájera^{*1} and Koryu Kin^{†2}

¹Department of Genetics, University of Cambridge, Cambridge, CB2 3EH, UK

²Instituto de Biología Evolutiva. Passeig Marítim de la Barceloneta, 37-49. 08003 Barcelona, Spain

The Naked mole-rat (NMR) is becoming a prominent model organism due to its peculiar traits, such as eusociality, extreme longevity, cancer resistance, and reduced pain sensitivity. It belongs to the African mole-rats (AMRs), a family of subterranean rodents that includes solitary, cooperative breeding and eusocial species. We identified and quantified the domestication syndrome (DS) across AMRs, a set of morphological and behavioural traits significantly more common and pronounced among domesticated animals than in their wild counterparts. Surprisingly, the NMR shows apparent DS traits compared to the solitary AMR. We argue that many of the NMR unconventional traits can be a side-effect of self-domestication. Animals can self-domesticate when a reduction of the fear response is naturally selected, such as in islands with no predators, or to improve the group's harmony in cooperative breeding species. We propose that self-domestication was necessary to increase social tolerance during the evolution of cooperative breeding and eusociality among AMRs. Finally, we discuss how the DS traits are neutral or beneficial for the subterranean niche and how the increased social tolerance of self-domesticated species could be a side effect of the physical properties of the soil. Our hypothesis provides a novel avenue to enhance the understanding of the extraordinary biology of the NMR.

Keywords— Naked mole-rat, African mole-rat, eusociality, domestication, neural crest, digging behaviour

Introduction

The reduction of the fight-or-flight response is a hallmark of domestication (1). From the Neolithic period, many animals adapted to the anthropogenic environment by reducing reactivity to humans and perhaps increasing their social tolerance (2). Surprisingly, there is a set of physical traits that often appear in domestic mammals but not in their wild equivalents, known as the domestication syndrome (DS). The DS includes depigmentation, a shorter snout, decreased brain size, floppy ears, reduced or missing teeth and hairlessness, among others traits (3; 4). These traits rarely occur in the wild, and usually, only a subset of them is present in each individual or variety of a domestic species. DS most probably was not directly selected by humans (3); but instead, it appeared as a side effect of selecting for tameness (1). Experiments with wild foxes, rats and minks show that DS traits can appear as a side effect of artificially selecting for tameness (5; 6; 7; 8). However, they can also appear in wild animals when selective pressures favour a reduced fight-or-flight response (self-domestication), as it occurs in islands with no predators (4; 9; 10). Finally, these traits can be observed in primates, including humans (11; 12; 13), bonobos (14), and marmoset monkeys (15), where it has been suggested that the reduced aggression associated with

the DS could have been selected to enhance cooperative breeding.

There have been many attempts to explain why selecting for tameness result in the distinct morphological traits encompassed by the DS, including changes in thyroid function (16; 17; 18), in the metabolism of the adrenaline (19; 20; 21), or the retention of juvenile traits in the adult animal (22; 23). Recently, a new, more comprehensive theory proposed that the DS syndrome is derived from mutations affecting the development of the hypothalamic-pituitary-adrenal (HPA) axis and the sympathetic nervous system (24). The HPA axis converts the perception of dangerous stimuli into a hormonal response by transmitting information to the adrenal medulla, which results in the release of glucocorticoids and adrenaline, leading to a long-term elevated reactivity (25). Similarly, the sympathetic nervous system mediates the short-term fight-or-flight response and directly stimulates the adrenal glands. This way, mutations producing a hypofunctional HPA axis could result in the reduced fear response characteristic of domestic animals. Remarkably, the sympathetic nervous system, the adrenal glands, skin melanocytes, bone and cartilage in the skull and teeth, among other tissues, are derived from the neural crest cells (NCC). This way, mild neurocristopathies (disorders derived from defects in the NCC) could explain tameness and

*guillermo.serrano-najera@gen.cam.ac.uk

†koryu.kin@upf.edu

the DS simultaneously (24).

The family of African mole-rats (AMR, family *Bathyergidae*) is a well-recognised model to study the evolution of cooperative breeding (26). This family of subterranean rodents contains solitary, social cooperative breeders and two eusocial species: The naked mole-rat (NMR) and the Damaraland mole-rat. Eusociality is an extreme form of cooperative breeding where species show sexual suppression, reproductive division of labour, overlapping generations and cooperative care of the young (27). In the case of eusocial AMRs, most members renounce to reproduce and specialise in digging, defence, or pup-caring, while a single queen continuously produces offspring (28). The NMR presents the most extreme and unusual traits of its family: it is eusocial, forms extensive colonies (29), and exhibits resistance to hypoxia, delayed senescence, cancer resistance, poor control of body temperature and reduced sensitivity to pain (reviewed in (30)). Its scientific name *Heterocephalus glaber* (“atypical bald head”), also refers to its rare morphological traits: it is hairless (except for sensory hairs), has wrinkled skin, and a flat skull with a reduced number of molars when compared with the other AMR (31). Strikingly, many of these morphological traits can be accounted as part of the DS. Is the NMR a domestic animal?

Here we propose that the social behaviour of AMR is the product of self-domestication. We document that DS traits are more prominent in social AMR species, especially in the NMR. We focus on the NMR because it presents the most extreme morphological and behavioural phenotype, and it is the best-studied member of the family. We propose that many of the unusual NMR traits could be the result of a mild-neurocristopathy that recapitulated the DS. We discuss the possible interactions between the DS and the subterranean niche and argue that eusociality evolved through self-domestication in AMRs. Finally, we argue that this integrative theory will aid NMR research on many fronts.

Domestication syndrome in the naked mole-rat

The AMR family comprises five genera and more than 15 species. All family members are subterranean rodents and present a complete set of morphological, physiological and behavioural adaptations to the underground environment. However, genera differ in some essential traits regarding their head, digging behaviours, and sociality. Surprisingly, many differences between the social AMR, especially the NMR, and the solitary species can be accounted for as part of the DS. We compiled a list of the DS traits across the AMR family (SM1). Here we highlight some of the main findings.

Head, SM1.1-4

The DS comprises a collection of traits that accumulate in the head of domestic species, including the shortening of the snout, smaller and lesser teeth, a reduction in the brain size and malformed ears (reviewed in (4)).

The face morphology in subterranean rodents is largely determined by their digging behaviours (32). Chisel-tooth diggers use their teeth to excavate and tend to have a wider cranium and a shorter snout, associated with the attachments of enlarged temporalis and masseter muscles. These adaptations allow them to increase the bite force and exploit harder soils (33; 32). In contrast, forelimb diggers use their claws to burrow in sandy soil and have more prominent faces (32) (Supplementary Fig. 1). Indeed, it seems likely that the properties of the soil, rather than the diet, was the main determinant in the evolution of the head morphology in AMR (see SM1.1).

To compare the head proportions in *Bathyergidae*, we calculated the ratio between the length and the width of the skull for the AMR, their closest relatives and other convergent mole rats (SM1.1). We estimated the trend for the chisel-tooth diggers in our data set (Fig. 1, see SM2 Materials and methods). The results suggest that the NMR has a disproportionately shorter snout even for a chisel tooth digger, probably due to a statistically significant reduction of the rostral length (33).

In domesticated species, the reduction of the snout length is associated with dental abnormalities such as crowding of the cheek teeth or a reduction of teeth size or number (4). Interestingly, the NMR presents one less molar (occasionally two) in each ramus (34) when compared with the other AMR (SM1.2).

Another common trait of the DS is reduced or malformed ears (4). Ears of AMR lack pinna, while their closest relatives, the other African Hystricognath, all have well developed external auricles (34). Furthermore, the NCC contribute to the formation of all the components of the ear, and hearing defects are common in Human neurocristopathies (35). Intriguingly, most ear components in the NMR appear to be further degenerated compared to other AMRs (36) (SM1.3).

Finally, domestic animals tend to possess smaller brains than their wild counterparts (4), with an exacerbated reduction of the forebrain (24). The brain size of the AMR has been extensively analysed under the hypothesis that social animals evolve larger brains in (37). However, on the contrary, they found that the NMR have relatively small brains (SM1.4) with a significant reduction in the number of forebrain neurons (Figure S1 in (37)). This apparent contradiction could be explained by the self-domestication hypothesis, which instead predicts the smaller brain size of NMR.

The DS could simultaneously explain the remarkable flattening of the face (even for a chisel-tooth digger), the dental abnormalities, the inner ear degeneration, and the forebrain reduction in the NMR.

Body and appearance, SM1.5-6

The body and pelage of domesticated animals present a series of characteristic traits. Domesticated species tend to present a reduced body size, relatively small hearts, shorter limbs, variations in the caudal vertebra and fur alterations, including complete or partial depigmentation and hairlessness (4).

A body size reduction occurred in early domestic

breeds as a natural adaptation to the human environment (2), and it could also be associated with self-domestication in islands (4). The NMR is the smallest member of the AMR family and can be considered a dwarf species (~ 30 g) when compared with the heaviest solitary members (*B. suillus*, (~ 1 Kg)) (SM1.5).

Furthermore, the NMR possesses a disproportionately small heart (SM1.5) in comparison with mouse (38) and a very long tail (50% of the head-body length) in comparison with the other AMR (8 – 24% of the head-body length) (34), which might suggest an abnormal number of the caudal vertebra (SM1.5). Finally, although specific measurements of the limb length across different species are lacking, the legs of the AMR are generally described as "short and slender" (39).

Partial or complete depigmentation is the most common trait in the DS (4). In particular, a white forelock is a common characteristic of domestic animals and a noticeable feature of the Waardenburg syndrome, a human neurocristopathy (24). Furthermore, the white forelock has been recently associated with the self-domestication phenotype in marmoset monkeys (15).

Intriguingly, most AMR species occasionally present a white forehead patch of variable size (Supplementary Fig. 3, SM1.6). Although the size and frequency of the patch have not been quantified, current reports suggest that it is more prominent among social species (Table 1, (34)). The NMR appearance departs from the other AMRs because of its complete depigmentation, hairlessness, and skin folds. However, all these attributes are also characteristic of some extreme domestic phenotypes (4).

The expansion of the tail length, small body size, depigmentation and skin folds in the NMR are traits consistent with the DS. Furthermore, the white forehead patch that characterises the AMR family has been previously associated with self-domestication in other organisms.

Reproductive and social behaviour, SM1.7-8

A combination of body size reduction, earlier sexual maturation, increased litter size, non-seasonal oestrus cycles, and a decrease in sexual dimorphism generally allow domestic animals to have higher reproductive rates than their wild counterparts (2; 4).

Solitary AMR reproduce seasonally, while most of the social ones do not (Table 1). In addition to reproducing aseasonally, the NMR has the highest annual reproductive output among the AMR (Table 1), and an exceptional lack of sexual dimorphism (SM1.7).

Glucocorticoids mediate the long-term response to environmental and social stressful situations. A reduction of the concentration of corticosteroid hormones characterises both domestic animals (1; 24; 40) and subordinate individuals in cooperative breeding species (25). In domesticated animals, the reduction of glucocorticoids could lower aggressive behaviours and increase social tolerance, which could also be beneficial to maintaining group harmony in cooperative breeding species. In this line, both eusocial species *F. Damarensis*

(41) and the NMR show little aggression among individuals of the same colony (42). However, while *F. Damarensis* manifest lower aggression against unfamiliar conspecifics, the NMR shows xenophobic behaviour (42; 43; 44).

The NMR presents, by far, the largest colony size among AMR, suggesting that they have an increased social tolerance. There are indications that the NMR suppressed social stress to acquire social tolerance toward members of the same species (SM1.7). For instance, in NMR individuals isolated from the rest of the colony, cortisol levels rise (45), indicating that they suffer from social stress as observed in marmoset monkeys (46) and tamarins (47), two cooperative breeding primates. Similarly, one study comprising one solitary and three social species found that only the solitary species showed an elevation of cortisol levels after repeated encounters with unfamiliar conspecific of the same sex (41).

Oxytocin is also a mediator of the HPA axis that has been associated with increased social cohesion and maternal behaviour in domesticated animals (40). In the same line, the NMR expresses more oxytocin receptor levels in the nucleus accumbens, a forebrain centre controlling monogamic, maternal and allomaternal behaviour, in comparison with the solitary *G. capensis* (48). Moreover, non-breeding individuals of an NMR colony present more oxytocin-producing neurons than breeding individuals, suggesting that oxytocin contributes to maintaining the group harmony in the worker caste (49).

Other traits linked to an altered NCC functionality, SM1.9

The NMR shows a series of peculiar biological traits that are not generally included in the DS, but that could be explained through defects in the physiology of the NCC. For example, certain neurocristopathies present alterations in the cutaneous innervation, thymus, T-cell population, and thyroids (50; 51). Similarly, the NMR manifests a decrease in the nociceptive C-fibres (52), an immature thymus (53), a notable deficit in cytotoxic T-cells (54) and unique low levels of thyroid hormone (55) (SM1.9)

Gene candidates

Here we discuss some well-studied mutations in the NMR that are associated with the NCC physiology or with the control of the fear response. See SM3 for another gene candidate ASIC4.

Trka

Trka (tropomyosin receptor kinase A) binds to NGF (nerve growth factor), promoting survival and differentiation of the sensory neurons during embryonic development, and modulating the sensitivity to pain later in life (56). Trka is implicated in cell migration in normal and pathological conditions (57); and it is necessary for the formation of the dorsal root and sympathetic ganglia by the trunk NCC in mouse (58).

In humans, mutations in the Trka gene produce congenital insensitivity to pain (CIP) with anhidrosis (CIPA), a neurocristopathy that results in a total loss of the C-fibres, lack of nociception, inability to sweat (hypotrophic sweat glands), lack of hair (bald patches in the scalp), poor thermoregulation, and oral and cranio-facial manifestation including missing teeth and nasal malformations (59; 50). Furthermore, CIPA patients seem to be unable to learn new fears and probably fail to exhibit a fight-or-flight response (50).

Knock out mice for Trka present a similar phenotype: Abnormal peripheral small nerves fibres, deficient nociception, small body size, early death, and severe cell loss in trigeminal, dorsal root, and sympathetic ganglia. However, they do not manifest anhidrosis, and over time they develop a mottled fur with scabs (58; 50). Trka null mice also show an acute decrease of the basal forebrain cholinergic neurons (BFCNs). Notably, BFCNs have been implicated in the control of conditioned fear behaviours (60), and mice lacking Trka signalling in the forebrain show defective fear conditioning (61). Furthermore, Trka null mice show a defective thymus formation with no clear delimitations between the cortex and the stroma and a reduced number of thymocytes (62).

The NCC hypothesis states that domesticated animals suffer a mild neurocristopathy produced by mutations that only partially reduce the activity of genes implicated in the NCC biology (24). The NMR possess between one and three amino acid substitutions in the kinase domain of Trka that turn the receptor hypofunctional that are absent or rare in other animals or among other AMR (63). Moreover, the expression level of Trka in the NMR is significantly lower than that of mouse (64). It is tempting to see many of the traits of the NMR as partly produced by a mild version of CIPA, caused by the reduced expression of a hypofunctional version of Trka. In this line, PRDM12 (PRDI-BF1 and RIZ homology domain-containing protein 12), a transcription factor downstream of Trka also associated with CIP in humans (65), shows lower expression and unique aminoacid variants in the NMR (64). Altogether, mutations in the Trka pathway could explain the reduction in the C-fibres and the reduction in pain sensitivity in the NMR (63); but also the lack of fur and sweat glands, the poor thermoregulation, the reduced and defective thymus, missing teeth, shorter muzzle and the smaller forebrain. Indeed, Trka could provide a genetic connection between the neural crest and the reduction of the forebrain suggested by the neural crest domestication hypothesis (24). Finally, Trka mutations also seem to cause a reduction in the fear response in mice and humans, and could potentially explain the high social tolerance of the NMR.

HIF1 α

The NMR presents critical molecular adaptations to survive in hypoxic/hypercapnic environments produced by large numbers of individuals living in borrows (66). For example, the NMR carries a hyperactive version of HIF1 α (Hypoxia Inducible factor 1 α), a transcription factor that regulates the expression of dozens of

genes in response to low-oxygen conditions. In normal-oxygen conditions, HIF1 α is targeted for degradation by VHL (Von Hippel-Lindau tumor suppressor); however, low-oxygen levels prevent the HIF1 α -VHL interaction. The NMR possesses a unique mutation in HIF1 α (T395I, [Supplementary Fig. 4](#)) that prevents its interaction with VHL, as well as a mutation in VHL (V166I) which probably further reduces the ubiquitination of HIF1 α (67). Moreover, the NMR expresses higher levels of HIF1 α than mice in several tissues (68). Lastly, HIF1 α probably promotes a glycolytic metabolism (69; 70), a less efficient pathway to obtain ATP than oxidative phosphorylation that works in the absence of oxygen. Glycolysis produces lactic acid as a by-product, which blocks glycolysis by inhibiting PFK1 (phosphofructokinase-1). The NMR presents a unique adaptation to bypass the glycolysis block during hypoxia by using fructose (instead of glucose) as a substrate, enabling the glycolysis even in high lactic-acid conditions (71).

Recently, it has been suggested that metabolic regulation is essential for the migration and differentiation of the NCC (72). Indeed, genetic disorders caused by mutations affecting the glucose metabolism produce severe congenital disabilities with severe craniofacial deformations similar to neurocristopathies (73; 74). NCC switch to glycolytic metabolism during delamination and migration and return to oxidative phosphorylation during differentiation (72). In fact, HIF1 α upregulates many NCC-specific genes and increased, and reduced HIF1 α activity results in defects in the NCC migration (75). Furthermore, alterations in VHL are associated with the von Hippel-Lindau syndrome, a neurocristopathy that can cause a variety of neoplasms, including the abnormal tissue growth of the adrenal gland (51). Intriguingly, more than the 20% of the NMRs in a zoo study presented adrenal hyperplasia (76).

The subterranean niche and self-domestication

Although AMR and NMR show many traits expected in underground rodents (fusiform body, short limbs, reduced external protuberances (32)), many traits seen in NMR cannot be simply explained by adaptation to subterranean niche (reduction of the forebrain, hairlessness, lack of sexual dimorphism, reduction of pain sensitivity, immature thymus...).

Traditionally, the DS has been explained as a pleiotropic side effect of selecting for tameness (1; 24). However, in some self-domesticated species, it is conceivable that the DS appears as a side effect of selecting for other trait associated with the NCC biology. We propose that harder soils, in conjunction with the subterranean niche, fostered the evolution the DS in AMR. AMR ancestors evolved more solitary and aggressive behaviours -a *wilder-like* phenotype- as they radiated towards more humid areas and encountered more resources and softer soils (77). Indeed, while the solitary AMR (*Bathiergus*, *Georychus*, and *Heliophobus*) are restricted to more humid environments where digging is easier, the social AMR (*Fukomys* and *Cryptomys*)

mys) mostly inhabit coarse sandy soils and the eusocial AMR (NMR and Damaraland mole-rat) tend to live in areas with hard, compacted soils (77).

The hardness of soil is often associated with the mode of digging in subterranean rodents. Curiously, among AMR, the only forelimb digger genus (*Bathyergus*) is solitary and territorially aggressive, while all social species (*Fukomys*, *Cryptomys*, *Heterocephalus*) are chisel-tooth diggers (34). Chisel-tooth digging is an adaptation to harder soils that requires a wider skull to enhance the attachment of larger muscles (33; 32). Potentially, harder soils could favour the widening of the rostrum, by creating an evolutionary pressure on the cranial NCC that resulted in the appearance of morphological and behavioural side effects associated with the DS. Simultaneously, harder soils can be better exploited in cooperation with other individuals to reduce the cost of digging extensive tunnels and improving the chances of finding dispersed food (77). Furthermore, molecular adaptations to the hypoxic environment produced by large colonies living underground could have an important impact in the physiology of the NCC, producing a more exacerbated DS. Finally, some of the characteristic traits of the DS traits could be either beneficial or neutral for a subterranean animal: the dwarfism, reduction of the ear, shortening of the limbs and flattening of the rostrum could be beneficial for moving through tunnels and digging, while alterations in colouration are probably less critical to animals living underground. Therefore, we argue that the genes associated with the physiology of the NCC in the NMR have been under evolutionary pressure (Fig. 2).

Altogether, this suggests that the subterranean niche could promote the self-domestication of underground rodents. In fact, genetically unrelated, convergent subterranean species could also present signs of self-domestication. For example, *Spalax ehrenbergi* is a superspecies of subterranean rodents that inhabit the eastern Mediterranean from Israel to Egypt. Similarly to AMRs, they present morphological adaptations to living underground such as short limbs, wide crania (Fig. 1), with varying coat colouration with occasional white forehead patches (78). Strikingly, although they are described as solitary, chromosomally distinct species present different ratios of aggressive and "pacifist" individuals. The Egyptian *Spalax* variant, which includes only "pacifist" animals, inhabits the arid environment (79) and can be distinguished by its shorter mandible (80). Furthermore, they present convergent genetic adaptations to the hypoxic environment (81; 82).

Testing the NMR self-domestication hypothesis

The self-domestication hypothesis for NMR presented in this paper can be tested in various ways. First, new behavioural studies are necessary to evaluate the fear response in different AMR species, for example through the evaluation of the freezing behaviour in classic fear-conditioning experiments where a mild electric foot-shock is applied after an acoustic stimulus. However,

the voltage threshold must be carefully calibrated for each species because they potentially present very different pain sensitivities (64). Alternatively, the freezing behaviour could be measured in the presence of the odour of a predator relevant for AMR species, for example, using snake or small carnivore faeces (34). We expect AMR with a more domesticated phenotype to present an altered fear-conditioned behaviour compared to solitary, forelimb diggers. Furthermore, it is difficult to compare the aggressiveness and fear response of eusocial and solitary species, because cooperative breeders can be affected by their ranking a reproductive status (44), variables that should be controlled. Gathering data on the size and activity of the adrenal glands and stress hormones during the fear response across different species could also be informative to test this hypothesis.

To test the implication of NCC in the evolution of AMRs we propose inter-species GFP-labelled NCC grafting experiments (24). We expect NCC from the NMR to show a deficient migration and/or differentiation in comparison with *Bathyergus* mole-rats. In addition, we expect that phylogenetic analysis of genes undergoing positive and relaxed selection (83) among AMR will highlight genes known for their involvement in NCC development or in neurocristopathies.

Finally, we propose the generation of an extensive database of subterranean and fossorial rodents containing their digging mode and other relevant morphological and behavioural traits. Using this database in combination with statistical analysis corrected by phylogeny to avoid evolutionary relationships affecting the independence of the individual samples (84), it would be possible to test if the digging mode in subterranean rodents is associated with DS traits and with an increased social behaviour.

Discussion

We showed that the NMR when compared with solitary AMRs, presents a phenotype compatible with the DS. We suggest that the DS could be beneficial for the evolution of life underground; and that the digging mode, determined by the properties of the soil, could create an evolutionary pressure on the NCC that generated the DS among AMRs. Furthermore, we highlighted some known mutations compatible with the evolution of a domestic phenotype and proposed experiments to test our hypothesis.

Taken all these together, we propose that the high degree of social tolerance necessary for the evolution of cooperative breeding and eusociality in AMRs occurred through self-domestication. A combination of scarce resources in increasingly arid environments (77; 26), together with the constraints imposed by hard soils and the underground environment, could create selective pressures that directly and indirectly lead to the self-domestication of the AMR. On one hand, an increased social tolerance associated with self-domestication could be beneficial for subterranean rodents because a colonial, cooperative life-style reduces the digging work carried out for any individual and increases the chances to find dispersed food (77). Hard

soils could impose an evolutionary pressure toward chisel-tooth digging, which requires a flatter face in order to increase the muscle attachments. If the muzzle reduction occurs through the selection of less active NCC, this could generate the pleiotropic effects seen in domestic animals and in neurocrisopathies, and might increase the social tolerance as a side effect. Moreover, the gathering of large number of individuals in subterranean tunnels generates a hypoxic environment which could lead to molecular adaptations that affect to the NCC development, further enhancing a self-domesticated phenotype. Intriguingly, in this way, the properties of the soil could act simultaneously as a distal (77) and a proximal factor for the evolution of sociality. In other words, the evolution of sociality in subterranean rodents could be initiated as a side effect of the underground environment and properties of the soil, providing an explanation for the abundance of colonial life among fossorial species.

Previously, neoteny has been used as a unifying biological explanation of the many distinctive NMR's morphological and physiological traits (85). Nevertheless, it is unclear what evolutionary pressures guided the evolution of a neotenic phenotype or how neotenic traits relate to each other. Instead, we argue that the self-domestication hypothesis is a more comprehensive framework for the evolution of the NMR. In fact, neoteny is often associated with a domestic phenotype, and neotenic and DS traits can be confounded (4). Our hypothesis offers a clear rationale to explain many NMR's attributes, how they relate to each other and pinpoints the evolutionary pressures that drove them.

The DS can be controversial due to the lack of a consistent definition of the traits among different publications (86). Under the mild neurocrisopathy theory of domestication, the DS is seen as a collection of pleiotropic effects of variable penetrance produced by mutations affecting the NCC, as can be readily seen in human neurocrisopathies (24; 51). Furthermore, in viable animals, the effects of the mutations affecting the NCC can be further confounded by compensatory mutations in some of the altered organs (87). For example, all the components of the ear in the NMR show signs of degeneration and intraspecific variation (36), however the NMR accumulated positively selected mutations affecting the cochlear hair bundles (88). A plausible interpretation is that the general ear degeneration produce by a mild-neurocrisopathy was later compensated by mutations that readapted the NMR hearing to the subterranean environment. In addition, some other traits associated with DS are neutral in the subterranean niche, and as such, they will not be compensated. This relaxed selective pressure in the underground environment could produce the exacerbation of certain traits, explaining perhaps the highly variable white forehead patch or the defects in the pain perception in the AMR family. Thus, the AMR could show how the combination of positive compensatory selection and relaxed selection can produce variations within the DS.

The study of the NCC could guide future research in the NMR as an animal model and provide new clues to understand its extraordinary biological traits. The

recognition of self-domestication and its pleiotropic effects could lead to a deeper understanding of the interactions of social behaviour and the physical environment during evolution.

Acknowledgments

GSN acknowledges support from an EASTBIO BBSRC PhD student training grant (1785593). KK acknowledges support through JSPS Overseas Research Fellowship (H28-1002) and la Caixa postdoctoral junior Leader fellowship (LCF/BQ/PI20/11760009). Both authors thank Kees Weijer for his comments and support, and Juan Pedro Fernández Doctor for the illustrations of the African mole-rats.

References

- [1] Belyaev DK. Domestication of animals. *Science*. 1969;5:47-52.
- [2] Tchernov E, Horwitz LK. Body size diminution under domestication: Unconscious selection in primeval domesticates. *Journal of Anthropological Archaeology*. 1991;10:54-75.
- [3] Darwin CR. Variation of plants and animals under domestication. 1868.
- [4] Sánchez-Villagra MR, Geiger M, Schneider RA. The taming of the neural crest: A developmental perspective on the origins of morphological covariation in domesticated mammals. *Royal Society Open Science*. 2016;3.
- [5] Trut LN. Early Canid Domestication: The Farm-Fox Experiment. *American Scientist*. 1999;87:160-9.
- [6] Trut L, Oskina I, Kharlamova A. Animal evolution during domestication: the domesticated fox as a model Domestication in evolutionary terms – from Darwin to the present day. *National Institute of Health*. 2009;31:349-60.
- [7] Wang X, Pipes L, Trut LN, Herbeck Y, Vladimirova AV, Gulevich RG, et al. Genomic responses to selection for tame/aggressive behaviors in the silver fox (*Vulpes vulpes*). *Proceedings of the National Academy of Sciences of the United States of America*. 2018;115:10398-403.
- [8] Singh N, Albert FW, Plyusnina I, Trut L, Svante P, Harvati K. Facial shape differences between rats selected for tame and aggressive behaviors. 2017:1-11.
- [9] Cooper WE, Pyron RA, Garland T. Island tameness: Living on islands reduces flight initiation distance. *Proceedings of the Royal Society B: Biological Sciences*. 2014;281:1-7.
- [10] Ramis D, Bover P. A review of the evidence for domestication of *Myotragus balearicus* Bate 1909 (*Artiodactyle*, *Caprinae*) in the Balearic Islands. *Journal of Archaeological Science*. 2001;28:265-82.

- [11] Theofanopoulou C, Gastaldon S, O'Rourke T, Samuels BD, Messner A, Martins PT, et al. Self-domestication in *Homo sapiens*: Insights from comparative genomics. *PLoS ONE*. 2017;12:5-7.
- [12] Sánchez-Villagra MR, van Schaik CP. Evaluating the self-domestication hypothesis of human evolution. *Evolutionary Anthropology*. 2019;28:133-43.
- [13] Zanella M, Vitriolo A, Andirko A, Martins PT, Sturm S, O'Rourke T, et al. Dosage analysis of the 7q11.23 Williams region identifies BAZ1B as a major human gene patterning the modern human face and underlying self-domestication. *Science advances*. 2019;5:eaaw7908.
- [14] Hare B, Wobber V, Wrangham R. The self-domestication hypothesis: Evolution of bonobo psychology is due to selection against aggression. *Animal Behaviour*. 2012;83:573-85.
- [15] Ghazanfar AA, Kelly LM, Takahashi DY, Winters S, Terrett R, Higham JP. Domestication Phenotype Linked to Vocal Behavior in Marmoset Monkeys. *Current Biology*. 2020:1-7.
- [16] Crockford SJ. Animal Domestication and Vertebrate Speciation : A Paradigm for the Origin Of Species. 2004.
- [17] carin Karlsson A, Fallahshahroudi A, Johnsen H, Hagenblad J, Wright D, Andersson L, et al. A domestication related mutation in the thyroid stimulating hormone receptor gene (TSHR) modulates photoperiodic response and reproduction in chickens. *GENERAL AND COMPARATIVE ENDOCRINOLOGY*. 2016.
- [18] Chuluunbat B, Abdelhadi O, Raziq A, Nagy P, Walzer C. Genomic signatures of domestication in Old World Camels. *Communications Biology*. 2020:1-10.
- [19] Keeler C, Mellinger T, Fromm E, Wade L. Melanin, Adrenalin and the Legacy of Fear. *Journal of Heredity*. 1970 3;61:81-8.
- [20] Nätt D, Kerje S, Andersson L, Jensen P. Plumage color and feather pecking—behavioral differences associated with PMEL17 genotypes in chicken (*Gallus gallus*). *Behavior genetics*. 2007;37:399-407.
- [21] Cagan A, Blass T. Identification of genomic variants putatively targeted by selection during dog domestication. *BMC Evolutionary Biology*. 2016:1-13.
- [22] Shea BT. Heterochrony in human evolution: The case for neoteny reconsidered. *American Journal of Physical Anthropology*. 1989 1;32:69-101. <https://doi.org/10.1002/ajpa.1330320505>.
- [23] Geiger M, Evin A, Sánchez-Villagra MR, Gascho D, Mainini C, Zollikofer CPE. Neomorphosis and heterochrony of skull shape in dog domestication. *Scientific Reports*. 2017;7:13443.
- [24] Wilkins AS, Wrangham RW, Fitch WT. The "domestication syndrome" in mammals: A unified explanation based on neural crest cell behavior and genetics. *Genetics*. 2014;197:795-808.
- [25] Sapolsky RM. The influence of social hierarchy on primate health. *Science*. 2005;308:648-52.
- [26] Faulkes CG, Bennett NC. Damaraland and naked mole-rats: Convergence of social evolution. *Cooperative Breeding in Vertebrates: Studies of Ecology, Evolution, and Behavior*. 2016:338-52.
- [27] Burda H, Honeycutt RL, Begall S, Locker-Grütjen O, Scharff A. Are naked and common mole-rats eusocial and if so, why? *Behavioral Ecology and Sociobiology*. 2000;47:293-303.
- [28] Faulkes CG, Bennett NC. Family values: Group dynamics and social control of reproduction in African mole-rats. *Trends in Ecology and Evolution*. 2001;16:184-90.
- [29] Jarvis JUM. Eusociality in a mammal: Cooperative breeding in naked mole-rat colonies. *Science*. 1981;212:571-3.
- [30] Braude S, Holtze S, Begall S, Brenmoehl J, Burda H, Dammann P, et al. Surprisingly long survival of premature conclusions about naked mole-rat biology. *Biological Reviews*. 2020.
- [31] Jarvis JUM, Sherman PW. *Heterocephalus glaber*. *Mammalian species*. 2002;2002:1-9.
- [32] Lacey EA, Patton JL. *Life underground: the biology of subterranean rodents*. University of Chicago Press; 2000.
- [33] McIntosh AF, Cox PG. Functional implications of craniomandibular morphology in African mole-rats (Rodentia: Bathyergidae). *Biological Journal of the Linnean Society*. 2016;117:447-62.
- [34] Kingdon J. *Mammals of Africa: Volume III: Rodents, Hares and Rabbits*. A&C Black; 2014.
- [35] Ritter KE, Martin DM. Neural crest contributions to the ear: Implications for congenital hearing disorders. *Hearing Research*. 2019;376:22-32.
- [36] Mason MJ, Cornwall HL, Smith ESJ. Ear Structures of the Naked Mole-Rat, *Heterocephalus glaber*, and Its Relatives (Rodentia: Bathyergidae). *PloS one*. 2016;11:e0167079.
- [37] Kverková K, Bělíková T, Olkiewicz S, Pavelková Z, O'Riain MJ, Šumbera R, et al. Sociality does not drive the evolution of large brains in eusocial African mole-rats. *Scientific reports*. 2018;8(1):1-14.
- [38] Grimes KM, Voorhees A, Chiao YA, Han HC, Lindsey ML, Buffenstein R. Cardiac function of the naked mole-rat: ecophysiological responses to working underground. *American Journal of Physiology-Heart and Circulatory Physiology*. 2013 12;306:H730-7. Doi: 10.1152/ajp-heart.00831.2013.

- [39] Schlitter DA, Ferguson AW, McDonough MM. Mammals of Africa (Vol. I-VI.). *Journal of Mammalogy*. 2014 12;95:1299-303.
- [40] Kikusui T, Nagasawa M, Nomoto K, Kuse-Arata S, Mogi K. Endocrine Regulations in Human-Dog Coexistence through Domestication. *Trends in Endocrinology and Metabolism*. 2019;30:793-806.
- [41] Ganem G, Bennett NC. Tolerance to unfamiliar conspecifics varies with social organization in female African mole-rats. *Physiology and Behavior*. 2004;82:555-62.
- [42] O'riain M, Jarvis J. Colony member recognition and xenophobia in the naked mole-rat. *Animal Behaviour*. 1997;53(3):487-98.
- [43] Barker AJ, Vevurko G, Bennett NC, Hart DW, Mograby L, Lewin GR. Cultural transmission of vocal dialect in the naked mole-rat. *Science*. 2021;371(6528):503-7.
- [44] Toor I, Maynard R, Peng X, Beery AK, Holmes MM. Naked mole-rat social phenotypes vary in investigative and aggressive behavior in a laboratory partner preference paradigm. *Frontiers in Ecology and Evolution*. 2022:379.
- [45] Edwards PD, Mooney SJ, Bosson CO, Toor I, Palme R, Holmes MM, et al. The stress of being alone: Removal from the colony, but not social subordination, increases fecal cortisol metabolite levels in eusocial naked mole-rats. *Hormones and Behavior*. 2020;121:104720.
- [46] Smith TE, French JA. Social and reproductive conditions modulate urinary cortisol excretion in black tufted-ear marmosets (*Callithrix kuhli*). *American journal of primatology*. 1997;42:253-67.
- [47] Ziegler TE, Scheffler G, Snowdon CT. The Relationship of Cortisol Levels to Social Environment and Reproductive Functioning in Female Cotton-Top Tamarins, *Saguinus oedipus*. *Hormones and Behavior*. 1995;29:407-24.
- [48] Kalamatianos T, Faulkes CG, Oosthuizen MK, Poorun R, Bennett NC, Coen CW. Telencephalic binding sites for oxytocin and social organization: A comparative study of eusocial naked mole-rats and solitary cape mole-rats. *Journal of comparative neurology*. 2010;518:1792-813.
- [49] Mooney SJ, Holmes MM. Social condition and oxytocin neuron number in the hypothalamus of naked mole-rats (*Heterocephalus glaber*). *Neuroscience*. 2013;230:56-61.
- [50] Indo Y. Nerve growth factor, interoception, and sympathetic neuron: Lesson from congenital insensitivity to pain with anhidrosis. *Autonomic Neuroscience: Basic and Clinical*. 2009;147:3-8.
- [51] Vega-Lopez GA, Cerrizuela S, Tribulo C, Aybar MJ. Neurocristopathies: New insights 150 years after the neural crest discovery. *Developmental Biology*. 2018;444:S110-43.
- [52] Smith ESJ, Purfürst B, Grigoryan T, Park TJ, Bennett NC, Lewin GR. Specific paucity of unmyelinated C-fibers in cutaneous peripheral nerves of the African naked-mole rat: Comparative analysis using six species of bathyergidae. *Journal of Comparative Neurology*. 2012;520:2785-803.
- [53] Lin T, Buffenstein R. The unusual immune system of the naked mole-rat. In: *The Extraordinary Biology of the Naked Mole-Rat*. Springer; 2021. p. 315-27.
- [54] Shebzukhov Y, Holtze S, Hirsland H, Schäfer H, Radbruch A, Hildebrandt T, et al. Identification of cross-reactive antibodies for the detection of lymphocytes, myeloid cells and haematopoietic precursors in the naked mole rat. *European Journal of Immunology*. 2019 11;49:2103-10. <https://doi.org/10.1002/eji.201948124>.
- [55] Buffenstein R, Pinto M. Endocrine function in naturally long-living small mammals. *Molecular and cellular endocrinology*. 2009;299(1):101-11.
- [56] Lewin GR, Lechner SG, Smith ESJ. Nerve growth factor and nociception: From experimental embryology to new analgesic therapy. vol. 220; 2014.
- [57] Wislet S, Vandervelden G, Rogister B. From neural crest development to cancer and vice versa: how p75NTR and (Pro) neurotrophins could act on cell migration and invasion? *Frontiers in molecular neuroscience*. 2018;11:244.
- [58] Smeyne RJ, Klein R, Schnapp A, Long LK, Bryant S, Lewin A, et al. Severe sensory and sympathetic neuropathies in mice carrying a disrupted Trk/NGF receptor gene. *Nature*. 1994;368:246-9.
- [59] Gao L, Guo H, Ye N, Bai Y, Liu X, Yu P, et al. Oral and Craniofacial Manifestations and Two Novel Missense Mutations of the NTRK1 Gene Identified in the Patient with Congenital Insensitivity to Pain with Anhidrosis. *PLoS ONE*. 2013;8:1-10.
- [60] Jiang L, Kundu S, Lederman JD, López-Hernández GY, Ballinger EC, Wang S, et al. Cholinergic Signaling Controls Conditioned Fear Behaviors and Enhances Plasticity of Cortical-Amygdala Circuits. *Neuron*. 2016;90:1057-70.
- [61] Sanchez-Ortiz E, Yui D, Song D, Li Y, Rubenstein JL, Reichardt LF, et al. TrkA gene ablation in basal forebrain results in dysfunction of the cholinergic circuitry. *Journal of Neuroscience*. 2012;32:4065-79.
- [62] Garcia-Suárez O, Germanà A, Hannestad J, Ciriaco E, Laurà R, Naves J, et al. TrkA is necessary for the normal development of the murine thymus. *Journal of neuroimmunology*. 2000;108(1-2):11-21.
- [63] Omerbašić D, Smith ESJ, Moroni M, Homfeld J, Eigenbrod O, Bennett NC, et al. Hypofunctional TrkA Accounts for the Absence of Pain Sensitization in the African Naked Mole-Rat. *Cell Reports*. 2016;17:748-58.

- [64] Lewin GR. William D. Willis, Jr, MD, PhD Memorial Lecture: The evolutionary history of nerve growth factor and nociception. *Pain*. 2020;161(1):S36.
- [65] Desiderio S, Vermeiren S, Van Campenhout C, Kricha S, Malki E, Richts S, et al. Prdm12 directs nociceptive sensory neuron development by regulating the expression of the NGF receptor TrkA. *Cell reports*. 2019;26(13):3522-36.
- [66] Park TJ, Smith ESJ, Reznick J, Bennett N, Applegate DT, Larson J, et al. African naked mole-rats demonstrate extreme tolerance to hypoxia and hypercapnia. In: *The Extraordinary Biology of the Naked Mole-Rat*. Springer; 2021. p. 255-69.
- [67] Kim EB, Fang X, Fushan AA, Huang Z, Lobanov AV, Han L, et al. Genome sequencing reveals insights into physiology and longevity of the naked mole rat. *Nature*. 2011;479(7372):223-7.
- [68] Xiao B, Wang S, Yang G, Sun X, Zhao S, Lin L, et al. HIF-1 α contributes to hypoxia adaptation of the naked mole rat. *Oncotarget*. 2017;8(66):109941.
- [69] Prigione A, Rohwer N, Hoffmann S, Mlody B, Drews K, Bukowiecki R, et al. HIF1 α modulates cell fate reprogramming through early glycolytic shift and upregulation of PDK1-3 and PKM2. *Stem cells*. 2014;32(2):364-76.
- [70] Varum S, Rodrigues AS, Moura MB, Momcilovic O, Easley IV CA, Ramalho-Santos J, et al. Energy metabolism in human pluripotent stem cells and their differentiated counterparts. *PloS one*. 2011;6(6):e20914.
- [71] Park TJ, Reznick J, Peterson BL, Blass G, Omerbašić D, Bennett NC, et al. Fructose-driven glycolysis supports anoxia resistance in the naked mole-rat. *Science*. 2017;356(6335):307-11.
- [72] Bhattacharya D, Khan B, Simoes-Costa M. Neural crest metabolism: At the crossroads of development and disease. *Developmental Biology*. 2021;475:245-55.
- [73] Chappell JH, Wang XD, Loeken MR. Diabetes and apoptosis: neural crest cells and neural tube. *Apoptosis*. 2009;14(12):1472-83.
- [74] Smith SM, Garic A, Flentke GR, Berres ME. Neural crest development in fetal alcohol syndrome. *Birth Defects Research Part C: Embryo Today: Reviews*. 2014;102(3):210-20.
- [75] Barriga EH, Maxwell PH, Reyes AE, Mayor R. The hypoxia factor Hif-1 α controls neural crest chemotaxis and epithelial to mesenchymal transition. *Journal of Cell Biology*. 2013;201(5):759-76.
- [76] Delaney M, Nagy L, Kinsel M, Treuting P. Spontaneous Histologic Lesions of the Adult Naked Mole Rat (*Heterocephalus glaber*) A Retrospective Survey of Lesions in a Zoo Population. *Veterinary pathology*. 2013;50(4):607-21.
- [77] Faulkes CG, Bennett NC. Plasticity and constraints on social evolution in African mole-rats: Ultimate and proximate factors. *Philosophical Transactions of the Royal Society B: Biological Sciences*. 2013;368:1-10.
- [78] Wolff JO, Sherman PW. *Rodent societies: an ecological and evolutionary perspective*. University of Chicago Press; 2008.
- [79] Beiles A, Heth G, Nevo E, Simson S. Adaptive pacifistic behaviour in subterranean mole rats in the Sahara desert, contrasting to and originating from polymorphic aggression in Israeli species. *Behaviour*. 1992;123:70-6.
- [80] Corti M, Fadda C, Simson S, Nevo E. Size and shape variation in the mandible of the fossorial rodent *Spalax ehrenbergi*. Springer; 1996.
- [81] Fang X, Nevo E, Han L, Levanon EY, Zhao J, Avivi A, et al. Genome-wide adaptive complexes to underground stresses in blind mole rats *Spalax*. *Nature communications*. 2014;5(1):1-11.
- [82] Zheng Z, Hua R, Xu G, Yang H, Shi P. Gene losses may contribute to subterranean adaptations in naked mole-rat and blind mole-rat. *BMC biology*. 2022;20(1):1-17.
- [83] Mitterboeck TF, Liu S, Adamowicz SJ, Fu J, Zhang R, Song W, et al. Positive and relaxed selection associated with flight evolution and loss in insect transcriptomes. *GigaScience*. 2017;6(10):gix073.
- [84] Freckleton RP, Harvey PH, Pagel M. Phylogenetic analysis and comparative data: a test and review of evidence. *The American Naturalist*. 2015.
- [85] Skulachev VP, Holtze S, Vyssokikh MY, Bakeeva LE, Skulachev MV, Markov AV, et al. Neoteny, prolongation of youth: From naked mole rats to “naked apes” (humans). *Physiological Reviews*. 2017;97:699-720.
- [86] Lord KA, Larson G, Coppinger RP, Karlsson EK. The History of Farm Foxes Undermines the Animal Domestication Syndrome. *Trends in Ecology and Evolution*. 2020;35:125-36.
- [87] Pavlicev M, Wagner GP. A model of developmental evolution: selection, pleiotropy and compensation. *Trends in Ecology & Evolution*. 2012;27(6):316-22.
- [88] Pyott SJ, van Tuinen M, Screven LA, Schrodde KM, Bai JP, Barone CM, et al. Functional, Morphological, and Evolutionary Characterization of Hearing in Subterranean, Eusocial African Mole-Rats. *Current Biology*. 2020;30:4329-41.

Species	Sociality	Total teeth	Digging mode	WHP (size)	WHP (frequency)	Breeding (max. litters/year)	Colony size
<i>H. glaber</i>	Eusocial	<=16	Chisel-tooth	NA	NA	Aseasonal (4)	75 (2-300)
<i>C. hottentotus</i>	Social	20	Chisel-tooth	Small	Occasional	Seasonal (2)	5 (2-14)
<i>F. bocagei</i>	Social	20	Chisel-tooth	Large	Always	?	?
<i>F. darlingi</i>	Social	20	Chisel-tooth	Large	Occasional	Aseasonal (4)	(5-9)
<i>F. kafuensis</i>	Social	20	Chisel-tooth	Large	Most	?	?
<i>F. anselli</i>	Social	20	Chisel-tooth	Large	Most	Aseasonal (2)	12 (2-25)
<i>F. damarensis</i>	Eusocial	20	Chisel-tooth	Large	Always	Aseasonal (3)	11 (2-41)
<i>F. foxi</i>	Social	20	Chisel-tooth	Present	Frequent	?	?
<i>F. zechi</i>	Social	20	Chisel-tooth	Present	Frequent	?	4 (1-7)
<i>F. ochraceocinereus</i>	Social	20	Chisel-tooth	Large	Occasional	?	?
<i>F. mechowii</i>	Social	20	Chisel-tooth	Tiny	Rare	Aseasonal (3)	2-20+
<i>H. argenteocinereus</i>	Solitary	<=28	Chisel-tooth	Small	Occasional	Seasonal (1)	NA
<i>G. capensis</i>	Solitary	28	Chisel-tooth	Small	Occasional	Seasonal (2)	NA
<i>B. janetta</i>	Solitary	28	Forelimb	Small	Rare	Seasonal (1)	NA
<i>B. suillus</i>	Solitary	28	Forelimb	Small	Occasional	Seasonal (2)	NA

Table 1: **Selected Domestication Syndrome traits in the African Mole Rats.** WHP: White forehead patch, not applicable (NA) for NMR because of its complete depigmentation. Colony size is NA for the solitary species. Interrogation mark (?) denotes missing data. All data were retrieved from (34).

Figures

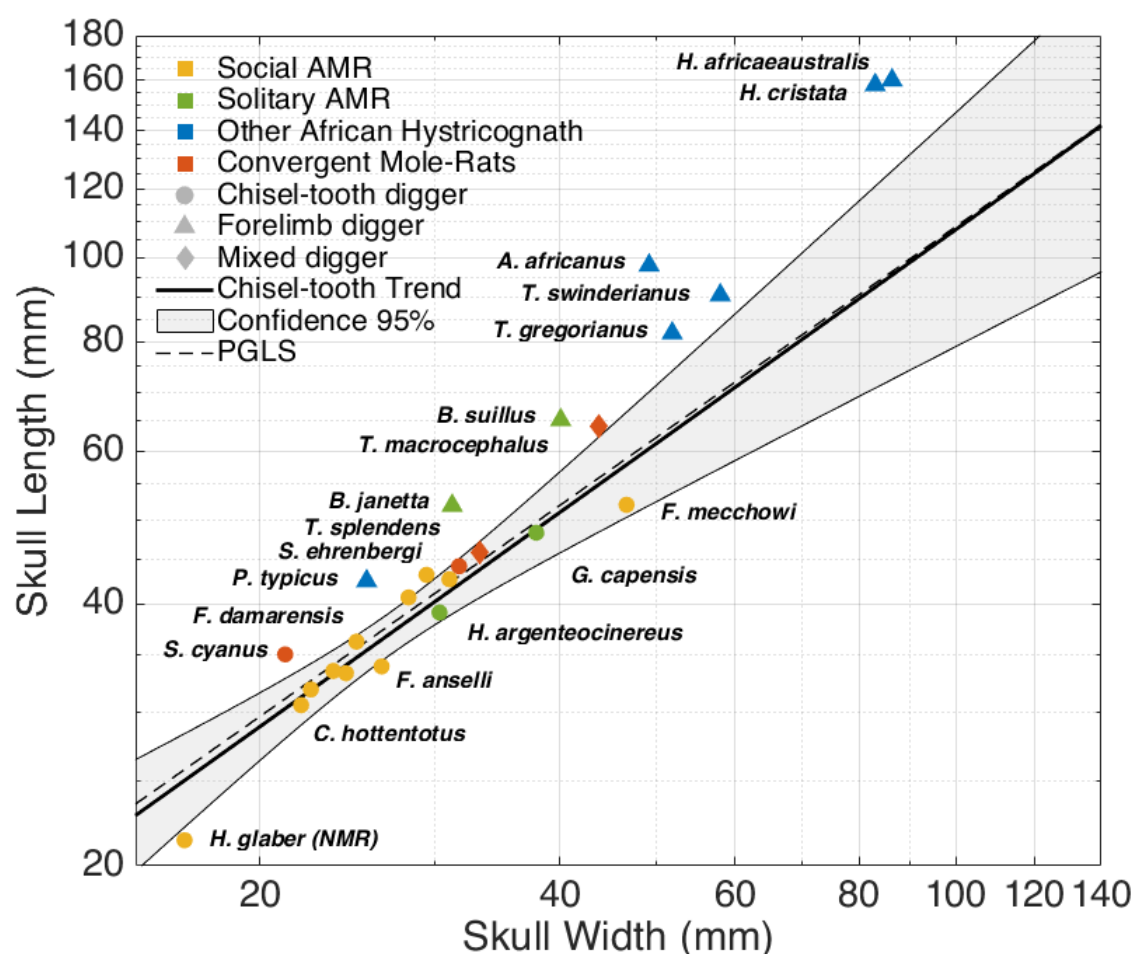


Fig. 1. Relation between the length and width of the skull in African mole rats, their closes relatives, and convergent subterranean rodents. Chisel-tooth digging subterranean rodents present a smaller skull length/width ratio than forelimb diggers. The naked mole-rat (*H. glaber*, NMR) has a significantly shorter snout even when compared to other chisel-tooth digging African mole-rats. Each data point is colored according to its social or phylogenetic attributes as indicated in the figure. The shape represents digging mode. The linear regression line for chisel-tooth diggers with 95% confidence intervals is shown, together with the regression line based on phylogenetic generalized least squares (PGLS). All data was retrieved from (34). See SM1.1 (Skull) and SM2 (Material and methods) for more details. PGLS was calculated using the evolutionary tree in [Supplementary Fig. 2](#).

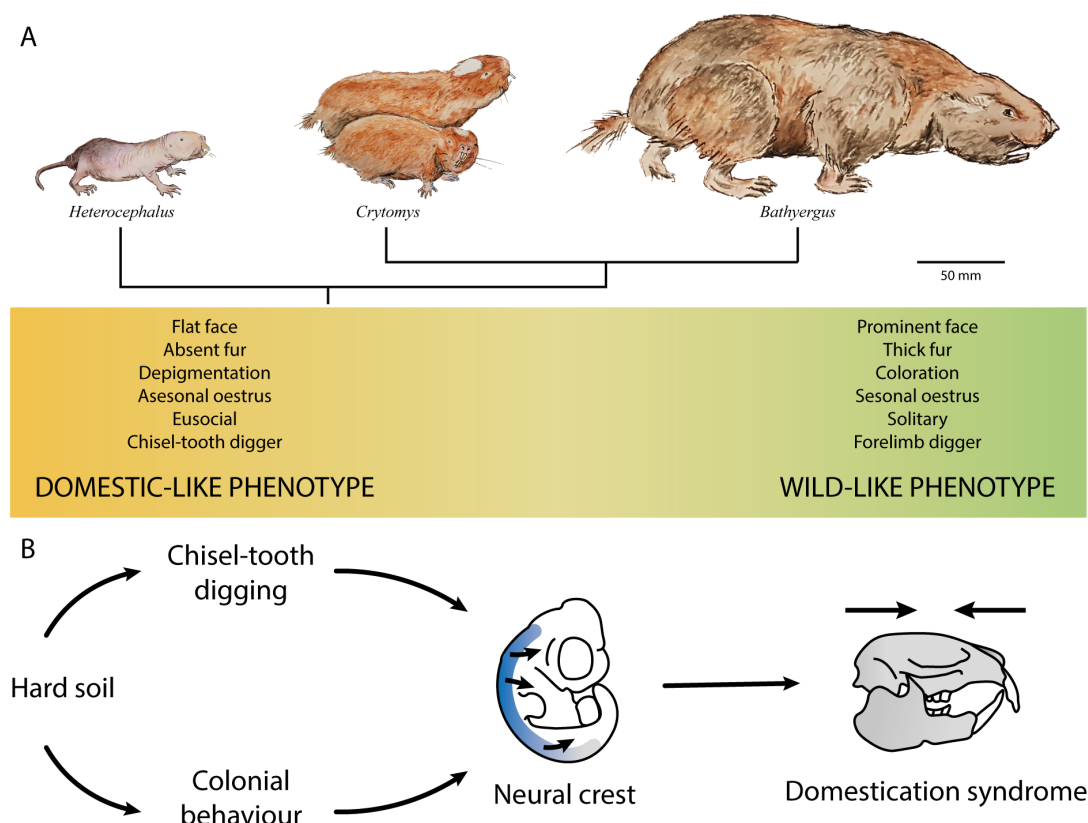


Fig. 2. Domestication syndrome in subterranean rodents. A) Evolution of the African mole-rats from a *domestic* to a *wild* morph. B) The subterranean niche could promote self-domestication. Chisel-tooth digging facilitates breaking hard ground, and a colonial, cooperative life-style reduces the amount of work carried out of each individual. Therefore, coloniality and chisel-tooth digging could be adaptations to hard soils. Coloniality needs a high degree of social tolerance, and chisel-tooth digging needs flat faces for large muscle attachments, which could serve as selective pressures for the neural crest producing the appearance of the domestication syndrome in subterranean rodents. Furthermore, large number of individuals underground generate a hypoxic environment which could favor the appearance of defects in the neural crest development.

Supplementary material

1 Domestication syndrome in the naked mole-rat

Here we compiled a list of the DS traits across the AMR family. This document intends to be a comprehensive resource, and as such, reproduces some of the analysis included in the main text.

1.1 Skull

The skulls of domestic animals presents many characteristic traits. Many domestic animals (e.g. dog, fox, pig, sheep, goat, cat, mouse, cow, human) present a reduced snout in comparison to their wild counterparts (reviewed in (1; 2)). Among subterranean rodents, the relative length of the snout is largely determined by their digging behaviours: forelimb diggers use their claws to scratch soft, sandy soil and possess more prominent faces, while chisel-tooth diggers use their incisors to exploit harder soil and have a relatively wider cranium (3). Chisel-tooth diggers show enlarged zygomatic arcs (cheek bones) and shorter rostra, associated with larger masseter and temporalis muscles, presumably to enhance the bite force (4; 3).

We gathered the width and length of the skull of the AMR, other African Hystricognath (the closest relatives to the AMR: Old World porcupines, the dassie rat and the cane rat) and examples of genetically unrelated convergent mole-rats (from genus *Spalax*, *Spalacopus* and *Tachyoryctes*). We calculated the ratio between the length and the width of the skull for the chisel-tooth diggers in our data set (Fig. 1). In comparison, exclusive forelimb diggers (other African Hystricognath and *Bathyergus* mole-rats) tend to have a more prominent snout (Supplementary Fig. 1). At the same time, *Tachyoryctes* members, which dig with both their limbs and teeth, present closer cranial proportions to exclusive chisel-tooth diggers (most AMR, *Spalax* and *Spalacopus*). We show that the NMR has a disproportionally shorter snout even for a chisel tooth digger, probably due to a statistically significant reduction of the rostral length (4). The relative shortening of the snout compared to other chisel-tooth diggers is a typical DS trait.

All AMR species share a similar diet of geofites, tubers and rhizomes (5). Unfortunately, there is no data available about the relative hardness of the plants (6) consumed by AMR in comparison with the hardness of the soil. However, it seems unlikely that any tuber or rhizome offer more resistance than the soil. In addition, while all AMR species eat similar plants (5), they inhabit areas with different soil properties (7). Solitary forelimb diggers (*Bathyergus*), are restricted to more humid environments where digging is easier, while chisel tooth diggers -specially the social species- tend to inhabit regions with harder soils (7). Therefore, it seems that the type of soil correlates better with the head morphology, digging behaviour and sociality (see [The subterranean niche and self-domestication](#) in the main text), than the type of diet, which suggests that the properties of the soil are the main determinant of the skull proportions among AMR.

1.2 Dentition

The skull of domestic animals often manifests dental abnormalities such as crowding of the cheek teeth or a reduction of teeth size or number (dogs, pigs, mouse, human; reviewed in (1; 2; 8; 9)). Most AMR species share

the same dental formula (I 1/1, C 0/0, P 1/1, M 3/3; 20 teeth; Table 1), except for *Heliophobus* (10), that shed their premolar teeth and substitutes them with new molars giving a higher, variable number from 20 to 28 teeth; and the NMR (10) which only presents 3 molars (occasionally only 2) in each ramus for a total of 14-16 teeth (5). Therefore, the NMR also presents a reduced, variable number of teeth, as seen in domestic animals.

1.3 Ear

Another common trait of the DS are reduced or malformed ears (e.g. dogs, horses, pigs, rabbits, cattle, guinea pig; reviewed in (1; 9). NCC contribute to the formation of all the components of the ear, and hearing defects are common in Human neurocristopathies (11). Ears of AMR lack pinna while their closest relatives, the other African Hystricognath, all have well developed external auricles (12). The ear of the NMR appears to be further degenerated compared to other AMRs. They have a very narrow, semi occluded external canal, a smaller than expected and fused malleoincus, a poorly ossified part of the malleus, weakly developed long process of the incus, lack of structural stiffness of the stapes, reduced number of cochlear turns, and a relatively small auditory bulla (13). Furthermore, the ear morphology in the NMR shows a considerable intraspecific variation which could suggest that the ear is subjected to a relaxed selective pressure (13). Finally, some studies indicate that the NMR has relatively poor hearing, while other studies suggest that the auditory system is just adapted to the subterranean niche (reviewed in (14)).

1.4 Brain

Domestic animals (e.g. dog, cat, pig, alpaca, rabbit, mouse, horse) usually have smaller brains than their wild counterparts (reviewed in (1)). Specifically, they tend to show an exacerbated reduction of the forebrain (mink, horse, pig, fox; (15; 16; 17). The brain/body weight ratio is significantly smaller in the NMR when compared to mice (18). Furthermore, the brain size of the AMR has been extensively analysed under the hypothesis that social animals evolve larger brains in (19). However, on the contrary, they found that social AMR species have relatively smaller brains than solitary ones, with a statistically significant reduction in forebrain neurons. In particular, the NMR has a significantly smaller brain mass and fewer neurons in comparison with the other AMR (Figure S1 in (19)). This apparent contradiction could be explained by the self-domestication hypothesis, which instead predicts the smaller brain size of NMR.

1.5 Body and heart

A body size reduction occurred in early domestic breeds (pig, dog, cow, goat, sheep) as a natural adaptation to the human environment (20). It could also be associated with self-domestication in islands (reviewed in (1)), probably as a consequence of small or absent predation and low interspecies competition. The body size of AMR varies exponentially among species. Social AMR species tend to be smaller than the solitary ones, with the NMR being the smallest (~ 30 g) and *B. suillus* the heaviest (~ 1 Kg). In addition to its arguable dwarfism, the body of the NMR differs because it possesses a long tail (50% head-body length), while the other AMR present very short tails (8% – 24% head-body length, depending on the genus; (12)). Similarly, changes in the number of

caudal vertebrae occurred in a few domesticated species (dog, cat, sheep; (1)). Moreover, many domestic animals show a shortening of the limbs (1) and, likewise, the legs of the AMRs are generally described as “short and slender” (12), although species-specific measurements are lacking in the literature. Finally, allometric analysis suggests that the NMR has a disproportionately small heart in comparison with mouse (21), a common trait among domesticated species (e.g. mouse, rat, guinea pig, pig, dog; (1)).

1.6 Skin and fur

Probably, complete or partial depigmentation is, along with increased tameness, the most frequent trait in the DS, appearing in at least some varieties of each known domestic species (1). In particular, a white forelock is a common characteristic of domestic animals and a noticeable feature of the Waardenburg syndrome, a human neurocristopathy (16). Furthermore, the white forelock has been recently associated with the self-domestication phenotype in marmoset monkeys (22). Interestingly, most AMR species occasionally present a white forehead patch of variable size (Supplementary Fig. 3). To our knowledge, the frequency and size of the white patch have not been quantified. However, the available reports (5) suggest that the white patch tends to be more prominent and frequent among social species and reduced and only occasionally present in the solitary mole-rats (Table 1). The NMR appearance departs from the other AMRs because of its complete depigmentation, hairlessness, and skin folds. However, all these attributes are also characteristic of some domestic variates (dog, cow, pig, goat, rabbit; (1)) and can be understood as a more extreme domestication phenotype.

1.7 Reproductive biology

A combination of body size reduction, earlier sexual maturation, increased litter size, non-seasonal oestrus cycles, and a decrease in sexual dimorphism generally allow domestic animals to have higher reproductive rates than their wild counterparts (20; 1). Non-seasonal reproduction, higher annual reproductive output, and absent or reduced sexual dimorphism seem to be more frequent among social AMR (*Cryptomys*, *Fukomys*, *Heterocephalus*). The lack of behavioural and morphological sexual dimorphism is exceptionally noticeable in the non-reproductive members of a NMR colony (23): The males lack scrotum, the females have an imperforated vagina; and, unlike any other mammal, the phallus (clitoris or penis), the anogenital distance, and the perineal muscles are sexually monomorphic (24; 25; 26).

They also lack sexual dimorphism in femoral bone structure and quality (27) and forebrain regions (28), which has been associated with the retention of a pre-pubertal phenotype in the worker castes (29; 30; 31).

While domestic animals seem to present an earlier sexual maturity, most of the individuals in a NMR colony never reproduce, and they remain all their life sexually suppressed in a pre-pubertal state until the breeding members need to be replaced (32; 33). This phenomenon can be seen as an extreme version of neoteny. Indeed, neoteny has been classically used to explain many of the characteristic reproductive and behavioural changes that occur during domestication (1). Many of the characteristic traits of the NMR can be considered neotenic (34) such as the lack of hair, absence of scrotum or the decline of bone mineralisation with age (35), which could be simultaneously related to the extraordinary social organisation and longevity of this species.

1.8 Hormones and social behaviour

Glucocorticoids mediate the long-term response to environmental and social stressful situations. A reduction of the concentration of corticosteroid hormones characterises both domestic animals (36; 37; 16; 38) and subordinate individuals in cooperative breeding species (39; 40). In domesticated animals, the reduction of glucocorticoids could lower aggressive behaviours and increase social tolerance, which could also be beneficial to maintain harmony within the group in cooperative breeding species. In this line, both eusocial species *F. Damarensis* (41) and the NMR show little aggression among individuals of the same colony (42). However, while *F. Damarensis* manifest lower aggression against unfamiliar conspecifics, the NMR shows xenophobic behaviour (42; 43; 44).

In NMR colonies, the queen displays most aggressive behaviours (45); however, cortisol levels, the main glucocorticoid in the non-murine rodents (46), do not correlate with social or reproductive status either in the NMR (47; 45) or *F. damarensis* (48) which suggest that social AMR do not suffer “stress of dominance” or “stress of subordination” (47).

Nonetheless, cortisol levels rise after the death of the queen producing a violent period when individuals fight for the succession (49; 50), or in an individual isolated from the rest of the colony (51; 47), indicating that they suffer from social stress as observed in marmoset monkeys (52) and tamarins (53), two cooperative breeding primates. Finally, in AMR species, there are no significant differences in the basal blood concentration of cortisol among non-pregnant females in one solitary species (*F. Georychus*) and three social species (*F. darlingi*, *F. hottentotus pretoriae*, *F. damarensis*). However, only the solitary species showed an elevation of cortisol levels after repeated encounters with unfamiliar conspecific of the same sex (41). Altogether, these observations suggests that cooperative breeding species suppressed social stress in order to acquire social tolerance towards members of the same species.

Oxytocin is also a mediator of the HPA axis that has been associated with increased social cohesion and maternal behaviour in domesticated animals (38). In the same line, the NMR expresses more oxytocin receptor levels in the nucleus accumbens, a forebrain centre controlling monogamic, maternal and allomaternal behaviour in comparison with the solitary *G. capensis* (54). Moreover, non-breeding individuals of a NMR colony present more oxytocin-producing neurons than breeding individuals, suggesting that oxytocin contributes to maintaining the prosocial behaviour of the worker caste (55).

1.9 Other traits linked to an altered NCC functionality

The NMR shows a series of peculiar biological traits that are not generally included in the DS, but that could be explained through defects in the physiology of the NCC.

1.9.1 Peripheral nervous system

Most of the structures of the peripheral nervous system (cranial and spinal nerves and ganglia; and enteric nervous system) are derived from the NCC (56). The NMR also manifest alterations in the cutaneous innervation. It presents a significantly reduced ratio of unmyelinated nociceptive C-fibres and A-fibres in the saphenous and sural nerves (1.5:1), while in most mammals C-fibres generally are 3-4 times more abundant (57). Innervation defects

are typical of certain neurocrystopathies (58) and could be manifestation of mutations affecting the biology of NCC (see [Trka](#) in the main text).

1.9.2 Thymus

NCC participate in the development of the stroma of the thymus, an organ necessary for the maturation of the T-cells (59); and consequently, the T-cell population is affected in several neurocrystopathies (60; 61). The NMR has a reduced thymus/body weight ratio and presents a poor delineation between cortex and medulla in comparison to mice (62). Moreover, the immune system of the NMR differs from mice and humans in having predominantly myeloid cells and a notable deficit in cytotoxic T-cells (63), which could be related to a defective thymus development due to alterations in the NCC.

1.9.3 Thyroid

The NCC also contribute to creating the stroma of the thyroids (64) and altered thyroid function is a common trait among neurocrystopathies (60), and it has been previously associated with domestication (65). Interestingly, the NMR exhibits unique low levels of thyroid hormone (66; 46).

1.9.4 Gall bladder

Gall bladder derives from the NCC (67). Although most vertebrates possess this gland, it is absent in the NMR (68).

2 Materials and methods

Data in [Table 1](#) and the mean values of skull lengths and widths for each species in [Fig. 1](#) and [Supplementary Fig. 1](#), data in were retrieved from (5). For species with conspicuous sexual dimorphism, only the values for the male organisms were used .

The dataset was analysed with a statistical package R (69). Linear regression based on ordinary least squares and its confidence interval was computed with an R function “lm”. Linear regression based on phylogenetic generalized least squares (PGLS) was performed with an R package “nlme” (70) and “phytools” (71). The tree used for the PGLS analysis is based on the node-dated exponential tree in (72), from which the species not included in this study were pruned away ([Supplementary Fig. 2](#)).

3 Other gene candidates

3.1 ASIC4

The NMR also presents adaptations to protect the brain against acidification. Acidotoxicity occurs when the accumulation of lactic acid during hypoxia acidify the medium to pathological levels, triggering the Ca^{2+} ASICs (acid-sensing ion channels) (73). The NMR shows a significantly reduced expression of ASIC4 in the brain compared to mouse, which protects its brain during acidosis (74). Furthermore, a recent report has identified

ASIC4 as a marker of the early differentiation of the NCC (75), and ASICs expression has been implicated in the processing of the fear response (76; 77; 78). In particular, ASIC4 in mice seems to modulate the freezing behaviour in the presence of predator odour, but not the shock-evoked fear learning (79). This way, mutations affecting the expression of ASICs could reduce the fight-or-flight response in the NMR giving rise to a more docile phenotype.

References

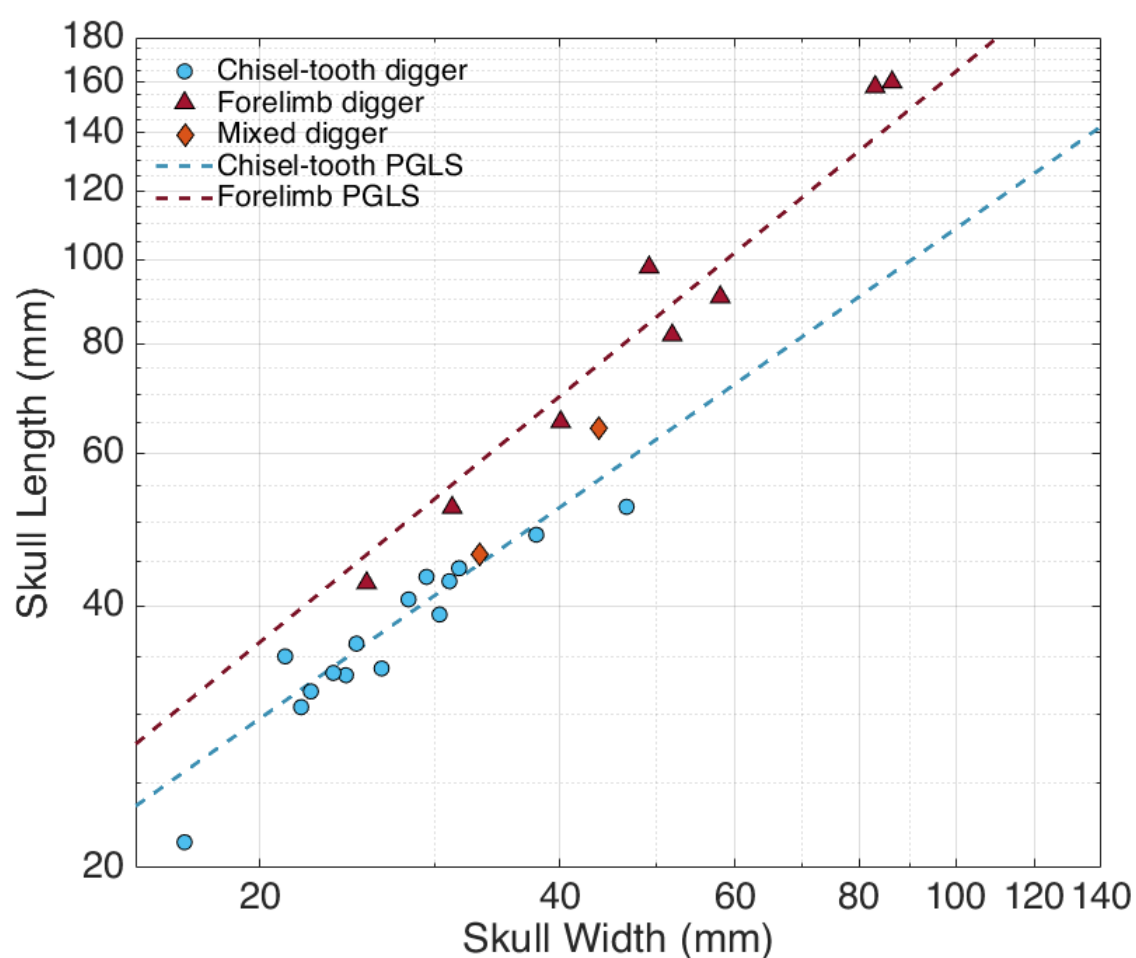
- [1] Sánchez-Villagra MR, Geiger M, Schneider RA. The taming of the neural crest: A developmental perspective on the origins of morphological covariation in domesticated mammals. *Royal Society Open Science*. 2016;3.
- [2] Sánchez-Villagra MR, van Schaik CP. Evaluating the self-domestication hypothesis of human evolution. *Evolutionary Anthropology*. 2019;28:133-43.
- [3] Lacey EA, Patton JL. *Life underground: the biology of subterranean rodents*. University of Chicago Press; 2000.
- [4] McIntosh AF, Cox PG. Functional implications of craniomandibular morphology in African mole-rats (Rodentia: Bathyergidae). *Biological Journal of the Linnean Society*. 2016;117:447-62.
- [5] Kingdon J. *Mammals of Africa: Volume III: Rodents, Hares and Rabbits*. A&C Black; 2014.
- [6] Dominy NJ, Vogel ER, Yeakel JD, Constantino P, Lucas PW. Mechanical properties of plant underground storage organs and implications for dietary models of early hominins. *Evolutionary Biology*. 2008;35(3):159-75.
- [7] Faulkes CG, Bennett NC. Plasticity and constraints on social evolution in African mole-rats: Ultimate and proximate factors. *Philosophical Transactions of the Royal Society B: Biological Sciences*. 2013;368:1-10.
- [8] Kleisner K, Stella M. Monsters we met, monsters we made: On the parallel emergence of phenotypic similarity under domestication. *Sign Systems Studies*. 2009;37:454-76.
- [9] Lord KA, Larson G, Coppinger RP, Karlsson EK. The History of Farm Foxes Undermines the Animal Domestication Syndrome. *Trends in Ecology and Evolution*. 2020;35:125-36.
- [10] Rodrigues HG, Šumbera R. Dental peculiarities in the silvery mole-rat: An original model for studying the evolutionary and biological origins of continuous dental generation in mammals. *PeerJ*. 2015;2015.
- [11] Ritter KE, Martin DM. Neural crest contributions to the ear: Implications for congenital hearing disorders. *Hearing Research*. 2019;376:22-32.
- [12] Schlitter DA, Ferguson AW, McDonough MM. *Mammals of Africa (Vol. I-VI)*. *Journal of Mammalogy*. 2014 12;95:1299-303.
- [13] Mason MJ, Cornwall HL, Smith ESJ. Ear Structures of the Naked Mole-Rat, *Heterocephalus glaber*, and Its Relatives (Rodentia: Bathyergidae). *PloS one*. 2016;11:e0167079.
- [14] Braude S, Holtze S, Begall S, Brenmoehl J, Burda H, Dammann P, et al. Surprisingly long survival of premature conclusions about naked mole-rat biology. *Biological Reviews*. 2020.
- [15] Kruska DCT. On the evolutionary significance of encephalization in some eutherian mammals: Effects of adaptive radiation, domestication, and feralization. *Brain, Behavior and Evolution*. 2005;65:73-108.
- [16] Wilkins AS, Wrangham RW, Fitch WT. The "domestication syndrome" in mammals: A unified explanation based on neural crest cell behavior and genetics. *Genetics*. 2014;197:795-808.
- [17] Trut LN, Dzerzhinskii FI, Nikol'skii VS. [Intracranial allometry and craniologic changes during domestication of silver foxes]. *Genetika*. 1991 9;27:1605-11.
- [18] Orr ME, Garbarino VR, Salinas A, Buffenstein R. Extended postnatal brain development in the longest-lived rodent: prolonged maintenance of neotenus traits in the naked mole-rat brain. *Frontiers in neuroscience*. 2016;10:504.
- [19] Kverková K, Bělíková T, Olkiewicz S, Pavelková Z, O'Riain MJ, Šumbera R, et al. Sociality does not drive the evolution of large brains in eusocial African mole-rats. *Scientific reports*. 2018;8(1):1-14.

- [20] Tchernov E, Horwitz LK. Body size diminution under domestication: Unconscious selection in primeval domesticates. *Journal of Anthropological Archaeology*. 1991;10:54-75.
- [21] Grimes KM, Voorhees A, Chiao YA, Han HC, Lindsey ML, Buffenstein R. Cardiac function of the naked mole-rat: ecophysiological responses to working underground. *American Journal of Physiology-Heart and Circulatory Physiology*. 2013 12;306:H730-7. Doi: 10.1152/ajpheart.00831.2013.
- [22] Ghazanfar AA, Kelly LM, Takahashi DY, Winters S, Terrett R, Higham JP. Domestication Phenotype Linked to Vocal Behavior in Marmoset Monkeys. *Current Biology*. 2020:1-7.
- [23] MacManes MD, Lacey EA. The social brain: transcriptome assembly and characterization of the hippocampus from a social subterranean rodent, the colonial tuco-tuco (*Ctenomys sociabilis*). 2012.
- [24] Jarvis JUM. Eusociality in a mammal: Cooperative breeding in naked mole-rat colonies. *Science*. 1981;212:571-3.
- [25] Peroulakis ME, Goldman B, Forger NG. Perineal muscles and motoneurons are sexually monomorphic in the naked mole-rat (*Heterocephalus glaber*). *Journal of Neurobiology*. 2002;51:33-42.
- [26] Seney ML, Kelly DA, Goldman BD, Šumbera R, Forger NG. Social structure predicts genital morphology in African mole-rats. *PLoS ONE*. 2009;4.
- [27] Pinto M, Jepsen KJ, Terranova CJ, Buffenstein R. Lack of sexual dimorphism in femora of the eusocial and hypogonadic naked mole-rat: A novel animal model for the study of delayed puberty on the skeletal system. *Bone*. 2010;46:112-20.
- [28] Holmes MM, Goldman BD, Forger NG. Social status and sex independently influence androgen receptor expression in the eusocial naked mole-rat brain. *Hormones and Behavior*. 2008;54:278-85.
- [29] Holmes MM, Rosen GJ, Jordan CL, Vries GJD, Goldman BD, Forger NG. Social control of brain morphology in a eusocial mammal. *Proceedings of the National Academy of Sciences of the United States of America*. 2007;104:10548-52.
- [30] Peragine DE, Pokarowski M, Mendoza-Viveros L, Swift-Gallant A, Cheng HYM, Bentley GE, et al. RFamide-related peptide-3 (RFRP-3) suppresses sexual maturation in a eusocial mammal. *Proceedings of the National Academy of Sciences of the United States of America*. 2017;114:1207-12.
- [31] Swift-Gallant A, Mo K, Peragine DE, Monks DA, Holmes MM. Removal of reproductive suppression reveals latent sex differences in brain steroid hormone receptors in naked mole-rats, *Heterocephalus glaber*. *Biology of sex differences*. 2015;6(1):1-9.
- [32] Faulkes CG, Abbott DH, Jarvis JU. Social suppression of ovarian cyclicity in captive and wild colonies of naked mole-rats, *Heterocephalus glaber*. *Journal of reproduction and fertility*. 1990 3;88:559-68.
- [33] Faulkes CG, Abbott DH, Jarvis JU. Social suppression of reproduction in male naked mole-rats, *Heterocephalus glaber*. *Journal of reproduction and fertility*. 1991 3;91:593-604.
- [34] Skulachev VP, Holtze S, Vyssokikh MY, Bakeeva LE, Skulachev MV, Markov AV, et al. Neoteny, prolongation of youth: From naked mole rats to “naked apes” (humans). *Physiological Reviews*. 2017;97:699-720.
- [35] Buffenstein R. Negligible senescence in the longest living rodent, the naked mole-rat: Insights from a successfully aging species. *Journal of Comparative Physiology B: Biochemical, Systemic, and Environmental Physiology*. 2008;178:439-45.
- [36] Belyaev DK. Domestication of animals. *Science*. 1969;5:47-52.
- [37] Trut LN. Early Canid Domestication: The Farm-Fox Experiment. *American Scientist*. 1999;87:160-9.
- [38] Kikusui T, Nagasawa M, Nomoto K, Kuse-Arata S, Mogi K. Endocrine Regulations in Human–Dog Coexistence through Domestication. *Trends in Endocrinology and Metabolism*. 2019;30:793-806.
- [39] Creel S. Social dominance and stress hormones. *Trends in Ecology and Evolution*. 2001;16:491-7.
- [40] Sapolsky RM. The influence of social hierarchy on primate health. *Science*. 2005;308:648-52.
- [41] Ganem G, Bennett NC. Tolerance to unfamiliar conspecifics varies with social organization in female African mole-rats. *Physiology and Behavior*. 2004;82:555-62.
- [42] O’riain M, Jarvis J. Colony member recognition and xenophobia in the naked mole-rat. *Animal Behaviour*. 1997;53(3):487-98.

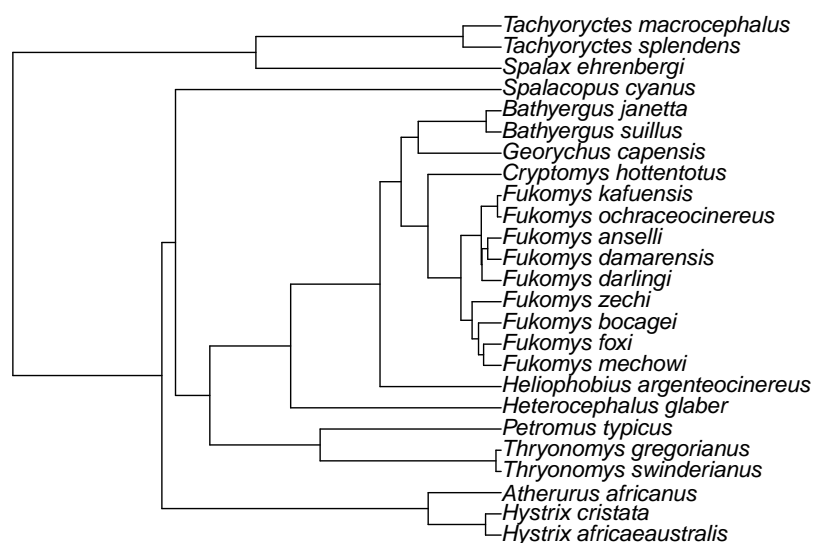
- [43] Barker AJ, Vevurko G, Bennett NC, Hart DW, Mograby L, Lewin GR. Cultural transmission of vocal dialect in the naked mole-rat. *Science*. 2021;371(6528):503-7.
- [44] Toor I, Maynard R, Peng X, Beery AK, Holmes MM. Naked mole-rat social phenotypes vary in investigative and aggressive behavior in a laboratory partner preference paradigm. *Frontiers in Ecology and Evolution*. 2022:379.
- [45] Clarke FM, Faulkes CG. Intracolony aggression in the eusocial naked mole-rat, *Heterocephalus glaber*. *Animal Behaviour*. 2001;61:311-24.
- [46] Buffenstein R, Pinto M. Endocrine function in naturally long-living small mammals. *Molecular and cellular endocrinology*. 2009;299(1):101-11.
- [47] Edwards PD, Mooney SJ, Bosson CO, Toor I, Palme R, Holmes MM, et al. The stress of being alone: Removal from the colony, but not social subordination, increases fecal cortisol metabolite levels in eusocial naked mole-rats. *Hormones and Behavior*. 2020;121:104720.
- [48] Medger K, Bennett NC, Lutermann H, Ganswindt A. Non-invasive assessment of glucocorticoid and androgen metabolite levels in cooperatively breeding Damaraland mole-rats (*Fukomys damarensis*). *General and Comparative Endocrinology*. 2018;266:202-10.
- [49] Clarke FM, Faulkes CG. Dominance and queen succession in captive colonies of the eusocial naked mole-rat, *Heterocephalus glaber*. *Proceedings of the Royal Society B: Biological Sciences*. 1997;264:993-1000.
- [50] Medger K, Bennett NC, Ganswindt SB, Ganswindt A, Hart DW. Changes in prolactin, cortisol and testosterone concentrations during queen succession in a colony of naked mole-rats (*Heterocephalus glaber*): a case study. *Science of Nature*. 2019;106:1-7.
- [51] Faykoo-Martinez M, Monks DA, Zovkic IB, Holmes MM. Sex-and brain region-specific patterns of gene expression associated with socially-mediated puberty in a eusocial mammal. *PLoS One*. 2018;13(2):e0193417.
- [52] Smith TE, French JA. Social and reproductive conditions modulate urinary cortisol excretion in black tufted-ear marmosets (*Callithrix kuhli*). *American journal of primatology*. 1997;42:253-67.
- [53] Ziegler TE, Scheffler G, Snowdon CT. The Relationship of Cortisol Levels to Social Environment and Reproductive Functioning in Female Cotton-Top Tamarins, *Saguinus oedipus*. *Hormones and Behavior*. 1995;29:407-24.
- [54] Kalamatianos T, Faulkes CG, Oosthuizen MK, Poorun R, Bennett NC, Coen CW. Telencephalic binding sites for oxytocin and social organization: A comparative study of eusocial naked mole-rats and solitary cape mole-rats. *Journal of comparative neurology*. 2010;518:1792-813.
- [55] Mooney SJ, Holmes MM. Social condition and oxytocin neuron number in the hypothalamus of naked mole-rats (*Heterocephalus glaber*). *Neuroscience*. 2013;230:56-61.
- [56] Prendergast A, Raible DW. *Neural Crest Cells and Peripheral Nervous System Development*. Elsevier Inc.; 2014.
- [57] Smith ESJ, Purfürst B, Grigoryan T, Park TJ, Bennett NC, Lewin GR. Specific paucity of unmyelinated C-fibers in cutaneous peripheral nerves of the African naked-mole rat: Comparative analysis using six species of bathyergidae. *Journal of Comparative Neurology*. 2012;520:2785-803.
- [58] Indo Y. Nerve growth factor, interoception, and sympathetic neuron: Lesson from congenital insensitivity to pain with anhidrosis. *Autonomic Neuroscience: Basic and Clinical*. 2009;147:3-8.
- [59] Zachariah MA, Cyster JG. Neural crest-derived pericytes promote egress of mature thymocytes at the corticomedullary junction. *Science*. 2010;328:1129-35.
- [60] Vega-Lopez GA, Cerrizuela S, Tribulo C, Aybar MJ. Neurocristopathies: New insights 150 years after the neural crest discovery. *Developmental Biology*. 2018;444:S110-43.
- [61] Chinen J, Rosenblatt HM, Smith E, Shearer WT, Noroski LM. Long-term assessment of T-cell populations in DiGeorge syndrome. *Journal of allergy and clinical immunology*. 2003;111:573-9.
- [62] Lin T, Buffenstein R. The unusual immune system of the naked mole-rat. In: *The Extraordinary Biology of the Naked Mole-Rat*. Springer; 2021. p. 315-27.
- [63] Shebzukhov Y, Holtze S, Hirsland H, Schäfer H, Radbruch A, Hildebrandt T, et al. Identification of cross-reactive antibodies for the detection of lymphocytes, myeloid cells and haematopoietic precursors in the naked mole rat. *European Journal of Immunology*. 2019 11;49:2103-10. <https://doi.org/10.1002/eji.201948124>.

- [64] Maeda K, Asai R, Maruyama K, Kurihara Y, Nakanishi T, Kurihara H, et al. Postotic and preotic cranial neural crest cells differently contribute to thyroid development. *Developmental Biology*. 2016;409:72-83.
- [65] Crockford SJ. *Animal Domestication and Vertebrate Speciation : A Paradigm for the Origin Of Species*. 2004.
- [66] Buffenstein R, Woodley R, Thomadakis C, Daly TJM, Gray DA. Cold-induced changes in thyroid function in a poikilothermic mammal, the naked mole-rat. *American Journal of Physiology-Regulatory, Integrative and Comparative Physiology*. 2001;280(1):R149-55.
- [67] Mawe GM, Talmage EK, Cornbrooks EB, Gokin AP, Zhang L, Jennings LJ. Innervation of the gallbladder: structure, neurochemical coding, and physiological properties of guinea pig gallbladder ganglia. *Microscopy research and technique*. 1997 10;39:1-13.
- [68] Hill WCO, Porter A, Bloom RT, Seago J, Southwick MD. FIELD AND LABORATORY STUDIES ON THE NAKED MOLE RAT, *HETEROCEPHALUS GLABER*. *Proceedings of the Zoological Society of London*. 1957 7;128:455-514. <https://doi.org/10.1111/j.1096-3642.1957.tb00272.x>.
- [69] R Core Team. R: A Language and Environment for Statistical Computing. Vienna, Austria; 2013. Available from: <http://www.R-project.org/>.
- [70] Pinheiro J, Bates D, R Core Team. nlme: Linear and Nonlinear Mixed Effects Models; 2022. R package version 3.1-157. Available from: <https://CRAN.R-project.org/package=nlme>.
- [71] Revell LJ. phytools: an R package for phylogenetic comparative biology (and other things). *Methods in ecology and evolution*. 2012;(2):217-23.
- [72] Upham NS, Esselstyn JA, Jetz W. Inferring the mammal tree: species-level sets of phylogenies for questions in ecology, evolution, and conservation. *PLoS biology*. 2019;17(12):e3000494.
- [73] Xiong ZG, Zhu XM, Chu XP, Minami M, Hey J, Wei WL, et al. Neuroprotection in ischemia: blocking calcium-permeable acid-sensing ion channels. *Cell*. 2004;118(6):687-98.
- [74] Husson Z, Smith ESJ. Naked mole-rat cortical neurons are resistant to acid-induced cell death. *Molecular Brain*. 2018;11:1-10.
- [75] Faure L, Wang Y, Kastri ME, Fontanet P, Cheung KK, Petitpré C, et al. Single cell RNA sequencing identifies early diversity of sensory neurons forming via bi-potential intermediates. *Nature communications*. 2020;11(1):1-15.
- [76] Vralsted VC, Price MP, Du J, Schnizler M, Wunsch AM, Ziemann AE, et al. Expressing acid-sensing ion channel 3 in the brain alters acid-evoked currents and impairs fear conditioning. *Genes, Brain and Behavior*. 2011;10:444-50.
- [77] Taugher RJ, Lu Y, Fan R, Ghobbeh A, Kreple CJ, Faraci FM, et al. ASIC1A in neurons is critical for fear-related behaviors. *Genes, Brain and Behavior*. 2017;16:745-55.
- [78] Wemmie JA, Coryell MW, Askwith CC, Lamani E, Leonard AS, Sigmund CD, et al. Overexpression of acid-sensing ion channel 1a in transgenic mice increases acquired fear-related behavior. *Proceedings of the National Academy of Sciences of the United States of America*. 2004;101:3621-6.
- [79] Lin SH, Chien YC, Chiang WW, Liu YZ, Lien CC, Chen CC. Genetic mapping of ASIC 4 and contrasting phenotype to ASIC 1a in modulating innate fear and anxiety. *European Journal of Neuroscience*. 2015;41(12):1553-68.
- [80] Robert X, Gouet P. Deciphering key features in protein structures with the new ENDscript server. *Nucleic Acids Research*. 2014 04;42(W1):W320-4.
- [81] Eigenbrod O, Debus KY, Reznick J, Bennett NC, Sánchez-Carranza O, Omerbašić D, et al. Rapid molecular evolution of pain insensitivity in multiple African rodents. *Science*. 2019;364(6443):852-9.

Supplementary Figures



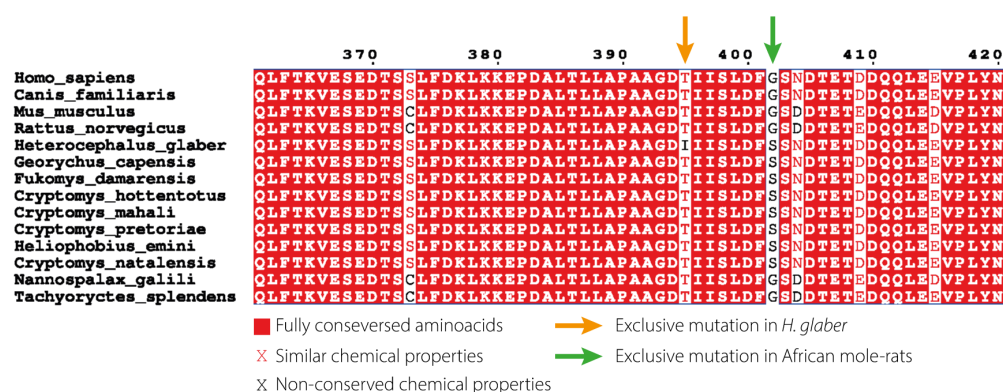
Supplementary Fig. 1. Trends in chisel-tooth and forelimb digger head proportions. Phylogenetic generalized least squares regression (PGLS) of the head proportions in chisel-tooth and forelimb diggers. Chisel-tooth diggers present a flatter face. PGLS was calculated using the evolutionary tree in [Supplementary Fig. 2](#).



Supplementary Fig. 2. Phylogenetic tree of the AMR, its close relatives and other convergent mole-rat species. This tree, which is based on the node-dated exponential tree in (70), was used to compute the phylogenetic generalized least squares regression (PGLS) of the head proportions (Fig. 1, PGLS and Supplementary Fig. 1).



Supplementary Fig. 3. White forehead patch in domestic species and African mole rats. Domestic species and some neurocristopathies are associated with large white patches on the forehead. Most African mole-rats present a white forehead patch which size and frequency could be associated with their social behaviour (Table 1). All images are available under Creative Common License. Authorship credit of the images in Supplementary Table 1.



Supplementary Fig. 4. Conservation of HIF1 α among African mole-rat and other subterranean rodents. The naked mole-rat (*H. glaber*) presents a unique mutation (T395I) that presumably prevents being targeted for degradation. Alignment generated with ENDscript2 (80) using data from (81)

Species	Authors	link
C. hircus	Nasser Halaweh	https://commons.wikimedia.org/wiki/File:Bovidae_Capra_aegagrus_hircus_(Westafrikanische_Zwergziege)_1.1.jpg
S. domesticus	Johan Spaetke	https://commons.wikimedia.org/wiki/File:Sus_scrofa_domesticus,_miniature_pig,_juvenile.jpg
E. ferus	Brandinian	https://commons.wikimedia.org/wiki/File:FlehmenseHorse.jpg
Waaardenburg	Mohammad2018	https://commons.wikimedia.org/wiki/File:Waaardenburg_syndrome_type_1_%283%29.png
B. janetta	Pete Oxford	https://www.art.com/products/p46836238381-sa-l10536581/pete-oxford-namaqua-dune-molerat-batherygus-janetta-feeding-captive-namaqualand-south-africa.htm
B. sullus	Ronald Flipphi	https://commons.wikimedia.org/wiki/File:Batherygus_sullus_Flipphi_1.jpg
G. capensis	Tony Rebelo	https://commons.wikimedia.org/wiki/File:Georychus_capensis_Rebelo_2.jpg
H. argenteocinereus	Dr E. St. J. Smith	https://commons.wikimedia.org/wiki/File:Adult_silvery_mole_rat_(blesmol).JPG
F. mechowii	Philip Dammann et al.	https://commons.wikimedia.org/wiki/File:Breeding_status_determines_the_pace_of_aging_in_Fukomys_mechowii.png
F. danarensis	Porqaz	https://commons.wikimedia.org/wiki/File:Danaraland_molerat2.png
F. darlingi	Klaus Rudloff	https://commons.wikimedia.org/wiki/File:Fukomys_darlingi_Rudloff.jpg
F. auselli	Eigenes Werk	https://commons.wikimedia.org/wiki/File:Graunull_IMG_4058.jpg

Supplementary Table 2. Authorship of images individual images in Supplementary Fig. 3. All images are available under Creative Common License.