

TIAToolbox: An End-to-End Toolbox for Advanced Tissue Image Analytics

Johnathan Pocock^{1*}, Simon Graham^{1*}, Quoc Dang Vu¹, Mostafa Jahanifar¹, Srijay Deshpande¹, Giorgos Hadjigeorgiou¹, Adam Shephard¹, Raja Muhammad Saad Bashir¹, Mohsin Bilal¹, Wenqi Lu¹, David Epstein¹, Fayyaz Minhas¹, Nasir M. Rajpoot¹, Shan E Ahmed Raza^{1†}

*Joint first authors

†Corresponding author

¹Tissue Image Analytics Centre, University of Warwick, United Kingdom

Abstract

Computational Pathology (CPath) has seen rapid growth in recent years, driven by advanced deep learning (DL) algorithms. These algorithms typically share the same sequence of steps. However, due to the sheer size and complexity of handling large multi-gigapixel whole-slide images, there is no open-source software library that provides a generic end-to-end API for pathology image analysis using best practices for CPath. Most researchers have designed custom pipelines from the bottom-up, restricting the development of advanced CPath algorithms to specialist users. To help overcome this bottleneck, we present TIAToolbox, a Python toolbox designed to make CPath more accessible to new and advanced CPath scientists and pathologists alike. We provide a usable and adaptable library with efficient, cutting-edge and unit-tested tools for data loading, pre-processing, model inference, post-processing and visualization. This enables all kinds of users to easily build upon recent DL developments in the CPath literature. TIAToolbox provides a user-friendly modular API to enable seamless integration of advanced DL algorithms. We show with the help of examples how state-of-the-art DL algorithms can be streamlined using TIAToolbox.

Main

Digitization of classical cellular pathology workflows through the deployment of digital whole slide image (WSI) scanners has resulted in significant progress in the development of computational pathology (CPath) image analysis techniques. Such advances have benefited greatly by adapting deep learning techniques from computer vision producing novel solutions to a variety of CPath problems, including nucleus instance segmentation¹, pathology image quality analysis² and WSI-level prediction^{3,4}. Although many algorithms have been developed for the analysis of WSIs which all share the same basic components (such as WSI reading, patch extraction and feeding to deep neural networks), there is no single open-source generic library that unifies all the steps using best practice to process these images. Several published algorithms have their own packaged codebases which run in a task-specific environment, with tightly coupled interfaces, dependencies and image format requirements. It is also common for there to be little to no code quality checks or unit testing. This may prevent code from a published peer-reviewed method being able to run “out of the box”, decrease the reproducibility of experiments, handicap the ability to extend or adapt existing methods

and increase the time required to understand the codebase. TIAToolbox is a suite of unit-tested image analysis and machine learning (ML) tools developed for the CPath community, making it possible for a variety of users to construct and reproduce CPath analytical pipelines with cutting-edge methods.

Guiding Principles

Our main objective is to provide an open-source library to the CPath community, which is simplified, streamlined, reproducible, easy to use, unit-tested and allows researchers to build their analytical pipelines on state-of-the-art methods. To achieve this, we provide a simple to use Application Programming Interface (API) which abstracts unnecessary complexity from the user where possible. This means that the API users can write code with a focus on the task at hand instead of being distracted by unnecessary details or peripheral tasks, such as managing multiple processes or needing to know the details of different WSI formats. The WSI reading capability of the toolbox is a good example of such abstraction that simplifies WSI reading. It hides unnecessary details of various file formats while keeping intact important format related metadata required for ML tasks. For reproducibility of algorithms, we provide pretrained published benchmark algorithms which can be run using only a few lines of code. This can help researchers to build on state-of-the-art methods and greatly simplifies the reproduction of previous results. Weights for these pretrained models can be automatically downloaded at runtime or can be provided by the user, making it easier to test alternate models using the same pipeline. We posit that TIAToolbox will help establish objective and measurable standards of progress in the development of CPath algorithms.

One of our main guiding principles is to make CPath accessible to researchers without expertise in Deep Learning for CPath-specific tasks. We provide example notebooks (<https://github.com/TissueImageAnalytics/tiatoolbox/tree/publication/examples>) for this purpose. These notebooks can be run in a web browser on local machines or free-to-use platforms such as Google CoLab and Kaggle. The online platforms require no local installation and are well suited to non-technical users. The notebooks additionally serve as a “manual by example” for the use of the TIAToolbox. Our toolbox is supported by extensive online documentation (<https://tia-toolbox.readthedocs.io/en/publication/>), including examples, for each module in TIAToolbox. In addition, we provide a command-line interface that enables experienced programmers to use the components of the package in Bash scripts and to batch-process their images or WSIs on CPU/GPU clusters.

Existing Tools

In this section, we provide a brief review of existing tools for reading whole slide images (WSIs), image annotations and image analysis. Image reading libraries, such as OpenSlide⁵ and BioFormats⁶, allow reading of WSI image formats. However, OpenSlide does not support several image formats. For example, it is unable to read JPEG-2000 JP2 images (although it can read JPEG-2000 J2K TIFF tiles) generated by legacy GE Omnyx scanners and images in OME-TIFF format (<https://docs.openmicroscopy.org/ome-model/5.6.3/ome-tiff/>), a commonly used open and well-documented file format). BioFormats supports reading of many WSI image formats. However, it is a Java library making it potentially difficult to integrate with Python-based workflows. The Java Python interface of BioFormats allows one to bridge this gap. However, it can be slow, complicated to set up and requires a variable set of parameters for different WSI formats — not ideal for a newcomer. Additionally, when reading JP2 images BioFormats relies on an outdated and unmaintained implementation from the Java Advanced Imaging (JAI) library for which support and documentation from Oracle has been discontinued. QuPath⁷ provides a graphical user interface and the ability to read a variety of formats. However, because of its dependence on BioFormats, it can be difficult to integrate with a custom Python ML pipeline, thereby limiting flexibility for creative experimentation.

Although it is possible to use separate libraries for various formats, different interfaces and resulting data types can make writing code to handle multiple formats complex and error-prone; especially when trying to replicate existing algorithms. This causes a significant loss of researchers' time in handling technical issues instead of evaluating and developing new pipelines. There are other considerations, such as handling metadata from various formats, re-sampling of images, integration with image processing tools and optimizing data loading from machine learning libraries.

QuPath offers models for nucleus segmentation and pixel-level tissue semantic segmentation, as shown in Table 1. However, these either come without pretraining or, in one case where a pretrained model is available, it must be manually downloaded from another source set up as an extension. QuPath also provides a semantic segmentation model based on a set of classical features (pixel mean, variance, entropy, etc.) and a random forest classifier. This approach has previously been implemented as a Fiji plugin (*TrainableSegmentation*) and is also implemented in scikit-image (*multiscale_basic_features*). It uses basic image features for model training/inference and therefore an interactive graphical user interface (GUI) can be successfully used, which is one of QuPath's major strengths. On the other hand, DL models for semantic segmentation typically produce results of higher quality, due to their ability to automatically extract representative image features. Furthermore, semantic segmentation in QuPath may practically only be trained on a small number of slides. This lack of diversity in the training data means that a trained model may not perform well on new slides. In contrast, the pretrained models in TIAToolbox are cutting-edge and have been trained on images sampled across many slides using public data sets, making them usable without any further user interaction or labelling. QuPath does also offer compatibility with a pretrained StarDist⁸ deep learning model for nucleus segmentation, currently requiring manual setup by the user. Other Python software packages, such as PathML, also offer some trained deep learning models. However, the selection is often limited, currently only one (HoVer-Net¹) in the case of PathML, with a U-Net⁹ implementation in progress. There is also no clearly documented way to integrate additional models or custom user models with PathML.

It is common for histology image analysis packages (such as HEAL¹⁰, HistoCartography¹¹ and CLAM¹²) to focus on a particular method, model or approach. In contrast, TIAToolbox can integrate with standard PyTorch modules (including many third-party PyTorch-based modules) and does not require the use of custom TIAToolbox layers or modules within the model architecture definition. It allows batch processing of several hundreds or thousands of WSIs and employs a modular structure, allowing for a wide variety of techniques to be integrated with the toolbox and for its modules to be used as components in new analytical pipelines.

Main Contributions

TIAToolbox addresses the aforementioned issues and provides a broad feature set, shown in comparison with other histology focused software packages in Table 1. The main contributions of TIAToolbox are as follows:

- **Development of histopathology image analysis pipelines:** The toolbox provides the most extensive integrated solution to a variety of important histopathology image analysis tasks ranging from multi-format image reading, patch and tile extraction, stain normalization, instance segmentation, patch classification and extraction of deep features for the development of WSI-level weakly supervised prediction models through weakly-supervised and graph neural network techniques as well as visualization of their results.
- **Wide Range of WSI Format Support:** Functionality to read common WSI image formats including OpenSlide compatible WSI formats (including Aperio SVS, Leica SCN), OME-TIFF

(OMERO) and JP2 (Omnyx) using a single Python API. It also allows the addition of other existing and newly emerging formats.

- **Unified Framework:** It provides a single unified framework with the ability to read and process a large number of visual fields (JPEG, PNG) as well as WSIs within the same framework.
- **Efficient Image Input:** Efficient random-access reading and re-scaling of WSIs based on resolution metadata (e.g., microns per pixel), making use of multiple stored resolutions. This allows efficient implementation of multiple instance learning (MIL) algorithms such as IDaRS³ that require random sampling of tiles.
- **Modularity:** Modular re-usable components encouraging the development of new analytical pipelines.
- **High Unit-Test Coverage:** We have set up automated unit testing as part of a continuous integration system (TRAVIS). In each release, we aim for over 99% coverage of all code.
- **Reproducible State-of-the-Art Methods:** We integrate and verify published models and provide pretrained weights to enable reproduction of results.
- **Cross-Platform Compatibility:** When implementing tools or integrating existing tools, we test for compatibility across Windows, Linux and macOS.
- **Ease of use:** We use abstraction where possible to reduce complexity for new users and to enable users with little programming experience to perform common tasks without having to worry about awkward edge cases. We also provide many example notebooks.
- **Command-Line Interface (CLI):** This feature is aimed at allowing easy, efficient and streamlined batch processing of large number of visual fields or WSIs.
- **Zoomify Tile Generation:** A tool which allows for analysis of results via a web-based interface.
- **Pure Python:** No need to bridge between languages, such as between Java and Python. Only Python code or cPython compatible C/C++ extensions are used. Language bridges can be problematic to set up and often have performance issues.

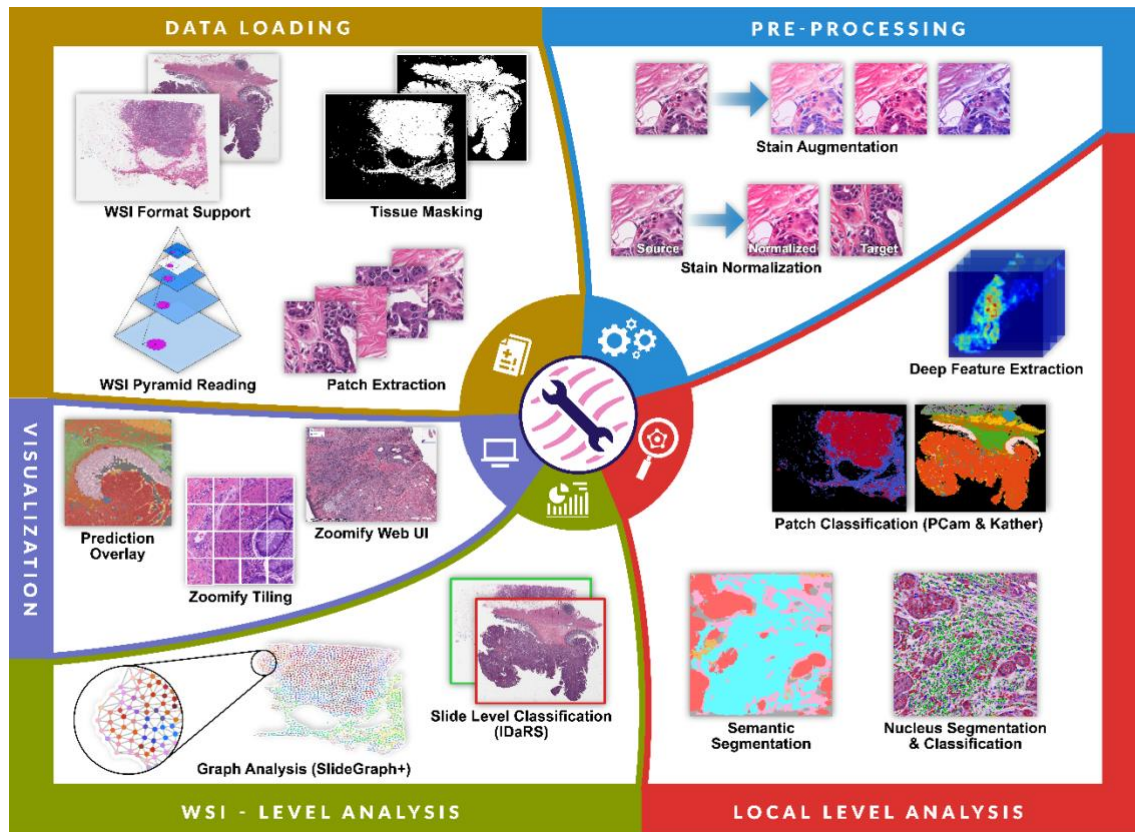


Figure 1: An illustration of the broad range of capabilities of TIAToolbox segmented into categories of data loading, pre-processing, local-level analysis, WSI-level analysis and visualization.

1 Table 1: Comparison of features available in different histopathology image analysis focused software packages. An exclamation mark (!) indicates a feature that may be possible with the software but either
 2 requires training or is not directly integrated with the software package. A question mark (?) indicates that there may be an appropriate metric, but no reported value could be found. † stainlib source at
 3 <https://github.com/sebastianffx/stainlib>. ‡ IBM CODAIT deep-histopath source at <https://github.com/CODAIT/deep-histopath>.

	TIA Toolbox	HistoCarto Graphy ¹¹	HEAL ¹⁰	QuPath ⁷	PathML ¹³	CLAM ¹²	Multi_Scale_Tools ¹⁴	stainlib [†]	IBM CODAIT deep-histopath [‡]	HistoQC ²
Platform Compatibility	Windows, Linux, Mac	?	Docker (Linux)	Windows, Linux, Mac	?	?	?	?	?	?
Language	Python	Python	Python	Java (+Groovy)	Java +Python	Python	Python	Python	Python	Python
Modular Usage	✓	✓	✗	✓	✓	✓	✗	✓	✗	✗
Unit Test Coverage	>99%	88%	0%	?	87%	0%	0%	0%	0%	?
Read Visual Fields (PNG, JPEG)	✓	✓	✓	✓	✓	✓	✓	✓	✗	✗
Read WSI TIFF (SVS, SCN, MRXS)	✓	✗	✓	✓	✓	✓	✓	✗	✓	✓
Read Generic Tiled TIFF	✓	✗	✓	✓	✓	✓	✓	✗	✓	✓
Read JP2 (Omnyx)	✓	✗	✗	✗	✗	✗	✗	✗	✗	✗
Read OME-TIFF	✓	✗	✗	✓	✓	✗	✗	✗	✗	✗
Physical Unit Based Reads	✓	✗	✗	✗	✗	✗	✗	✗	✗	✗
Tissue Masking / Detection	✓	✓	✗	✓	✓	✓	✗	✗	✓	✓
Patch Extraction	✓	✗	✓	✗	✗	✓	✓	✗	✓	✗
Stain Separation	✓	✓	✗	✓	✓	✗	✗	✓	✗	✗
Stain Normalization	✓	✓	✓	✗	✓	✗	✗	✓	✗	✗
Stain Augmentation	✓	✗	✗	✗	✗	✗	✗	✓	✗	✗
Patch Classification	✓	✗	✗	✓	✗	✗	✓	✗	!	✗
Tissue Semantic Segmentation	✓	✗	✗	!	✓	✗	!	✗	✗	✗
Nucleus Detection	✓	✓	✗	✓	✓	✗	✗	✗	✗	✗
Nucleus Segmentation	✓	✗	✗	✓	✓	✗	✗	✗	✗	✗
Nucleus Classification	✓	✗	✗	✓	✓	✗	✗	✗	✗	✗
Deep Feature Extraction	✓	✓	✗	✗	✗	✓	✗	✗	✗	✗
Graph Learning	✓	✓	✗	✗	✗	✗	✗	✗	✗	✗
Whole Slide Classification	✓	✓	✓	✗	✗	✓	✗	✗	✗	✗

Results

In this section, we demonstrate the utility of TIAToolbox for two WSI-level prediction tasks, using recently proposed DL models, while demonstrating several of the other functionalities of the toolbox. First, we predict the status of molecular pathways and key mutations in colorectal cancer from Hematoxylin and Eosin-stained (H&E) histology images using a two-stage patch-level classification model. Next, we predict the HER2 and ER status from H&E histology images using SlideGraph+, a graph neural network-based model. We show that the implementation of both the pipelines has been simplified using a common interface provided by TIAToolbox as shown in Figure 2. This reduces the effort needed by a new researcher seeking to extend these approaches.

Patch Aggregator: Predicting the Status of Molecular Pathways and Mutations using Patch-level Predictions

Assessment of the status of molecular pathways and key genetic mutations helps better understand the patient prognosis and can provide important cues for treatment planning. Typically, this assessment is done via genetic (e.g., polymerase chain reaction or PCR) or immunohistochemistry (IHC) testing. However, these tests may lead to time delays and additional costs because they are used as an extra step after initial analysis on routine H&E-stained slides. Recently, it has been shown that deep learning has the potential to predict the status of pathways and mutations directly from the H&E slides, potentially bypassing the need for additional tests^{3,15}.

Despite the obvious advantages of H&E based prediction using deep learning, some researchers may struggle to reproduce the mutation prediction pipeline, where slight changes in the code may lead to significantly different results. Furthermore, new researchers may be discouraged from implementing the method, due to the challenge of working with high dimensional histology data. Here, we show that TIAToolbox can be used to complete all necessary steps to predict the status of molecular pathways and key mutations in colorectal cancer and help simplify the overall analytical workflow. To achieve this, we follow the same approach used in the original paper by Bilal *et al.*³ and use a two-stage pipeline. We first localize the tumor regions to identify the potentially diagnostic areas and then use the IDaRS model of Bilal *et al.*³ to make a prediction for the entire whole-slide image. Using the toolbox, these two steps can be completed with reproducible results without the need for advanced programming experience. We display our entire simplified IDaRS integration into TIAToolbox in Supplementary Listing A-9. It is worth noting that both stages use the toolbox's *PatchPredictor*, as shown in Supplementary Listing A-4 and differ only in terms of the pretrained model, which is defined during class initialization.

Identifying the tumor regions as an initial step is important for various tasks, for instance enabling the downstream analysis to be focused on diagnostically relevant areas. This initial step may also be useful in other tasks, such as cancer staging¹⁶ and cancer subtyping¹⁷. To help overcome challenges resulting from limited computer memory, it is common to divide multi-gigapixel WSIs into smaller image patches, which are processed independently before merging the results. Using this approach, we obtain a tumor detection map by determining whether each input patch within the tissue contains any tumor. We utilize a pretrained ResNet¹⁸ within TIAToolbox's *PatchPredictor* model to efficiently deal with patch-level processing and aggregation.

After obtaining the tumor detection map, we follow a similar *divide, process* and *merge* approach to obtain the task-specific prediction map. Using TIAToolbox's patch prediction functionality, each tumor

patch is seamlessly processed with a pretrained ResNet and the results are merged. This prediction map can help improve the interpretability of results made by IDaRS and identify areas contributing to the overall prediction. To obtain the final WSI prediction, patch results are aggregated to give a single score. IDaRS is a weakly-supervised approach, trained using multi-instance learning technique and therefore the slide-level score is obtained using a common pooling strategy, such as selecting the maximum or average probability over all tumor patches. In the toolbox, we provide models trained on the first fold used in the original paper by Bilal *et al.*³ to predict the following:

- Microsatellite instability
- Hypermutation density
- Chromosomal instability
- CpG island methylator phenotype (CIMP)-high prediction
- BRAF mutation
- TP53 mutation

As a result of TIAToolbox taking care of complex WSI handling behind the scenes, this pipeline has been reproduced in Example Notebook (IDaRS), utilizing the same code fragment as in Supplementary Listing A-4 as backend with significantly fewer lines of code than the original implementation. This highlights how functionalities in the proposed toolbox can be efficiently leveraged for WSI prediction tasks in CPath. These patch prediction models can use individual patches, larger image tiles or WSIs as input. For this example and to follow the approach used by Bilal *et al.*³, we choose to focus on WSI-level inputs. To help reduce the inference time, the models that we include within the toolbox have been retrained without stain normalization, as opposed to the original IDaRS implementation. A full breakdown of performance obtained after retraining is provided in Supplementary Table A-8. We observe that despite a slight reduction in performance which may be due to not using stain normalization, models provided with the toolbox can successfully predict molecular pathways and mutations.

Graph Aggregator: Predicting HER2 Status using SlideGraph+

HER2 and ER status are key prognostic indicators for establishing an appropriate breast cancer treatment plan. As with other biomarkers, they are typically assessed with IHC staining. Instead, determining status via routine H&E slides can potentially reduce costs and time-to-treatment. We show the integration of SlideGraph+¹⁹ pipeline using TIAToolbox for the prediction of HER2 status and ER status from H&E-stained histopathology images. SlideGraph+¹⁹ is a message-passing graph neural network-based pipeline for WSI-level prediction that works by modelling each WSI as a graph with nodes corresponding to tissue regions and each node having a set of local features. Edges between nodes represent spatial organization within the tissue (see Figure 2).

The SlideGraph+ pipeline consists of patch extraction from WSI(s), stain normalization, node-level feature extraction, graph construction and prediction of the WSI label via a graph convolutional network (GCN). It is perhaps worth noting that this graph-based method is generic and can be applied to a wide range of WSI classification problems, as it is agnostic to both the problem at hand and the features utilized for prediction.

As shown in Figure 1 and Figure 2, the IDaRS and the SlideGraph+ pipelines have numerous modules in common. Many of the same modules used in the IDaRS pipeline can be reused without reimplementing of the whole pipeline. Using *PatchExtractor* and *StainNormalizer*, it is easy to extract patches from tissue regions of the WSI and apply stain normalization across patches in the same way that is done in the original SlideGraph+ implementation. For each of these patches, a set of features must then be extracted. Different types of features can be extracted here, such as deep

features from a CNN pretrained on the ImageNet dataset, cellular morphological features (class, major axis diameter, eccentricity, etc.) derived from the HoVer-Net segmentation and classification output, or the output of a network trained to regress from an H&E patch to the corresponding DAB intensity between registered H&E and IHC slides, as demonstrated by Lu *et al.* In our example implementation, we use TIAToolbox's *DeepFeatureExtractor* to obtain features from an ImageNet-pretrained ResNet and cellular morphology features from HoVer-Net. Here, the state-of-the-art HoVer-Net model is provided as part of the toolbox's *NucleusInstanceSegmentor* engine, which can be used to subsequently obtain either deep or cellular composition features. The modularity of the toolbox and the flexibility of the SlideGraph+ method allows for fast and easy experimentation, without having to write a lot of code to reimplement many common steps like patch extraction, stain normalization and feature extraction.

TIAToolbox provides a hybrid clustering graph construction method, as used by Lu *et al.*¹⁹, which requires only the location of each patch within the WSI and a corresponding node-level feature vector. This method clusters patches based on a weighted combination of location and extracted features such that regions with similar features or locations in a WSI are grouped into the same cluster.

The extraction of features and construction of WSI graph representations by TIAToolbox can be easily integrated with code for training a GCN. The modular nature of TIAToolbox allows for easy integration into a Jupyter notebook as part of the toolbox examples to successfully reproduce the SlideGraph+ results obtained in the original Lu *et al.* paper¹⁹ using ImageNet deep features and HoVer-Net derived cellular morphology features. TIAToolbox also enabled the ER status prediction using the SlideGraph+ methodology. For a full breakdown of these results and comparison with the original results, refer to Supplementary Table A-7. Here the results that we report are obtained using five-fold cross validation.

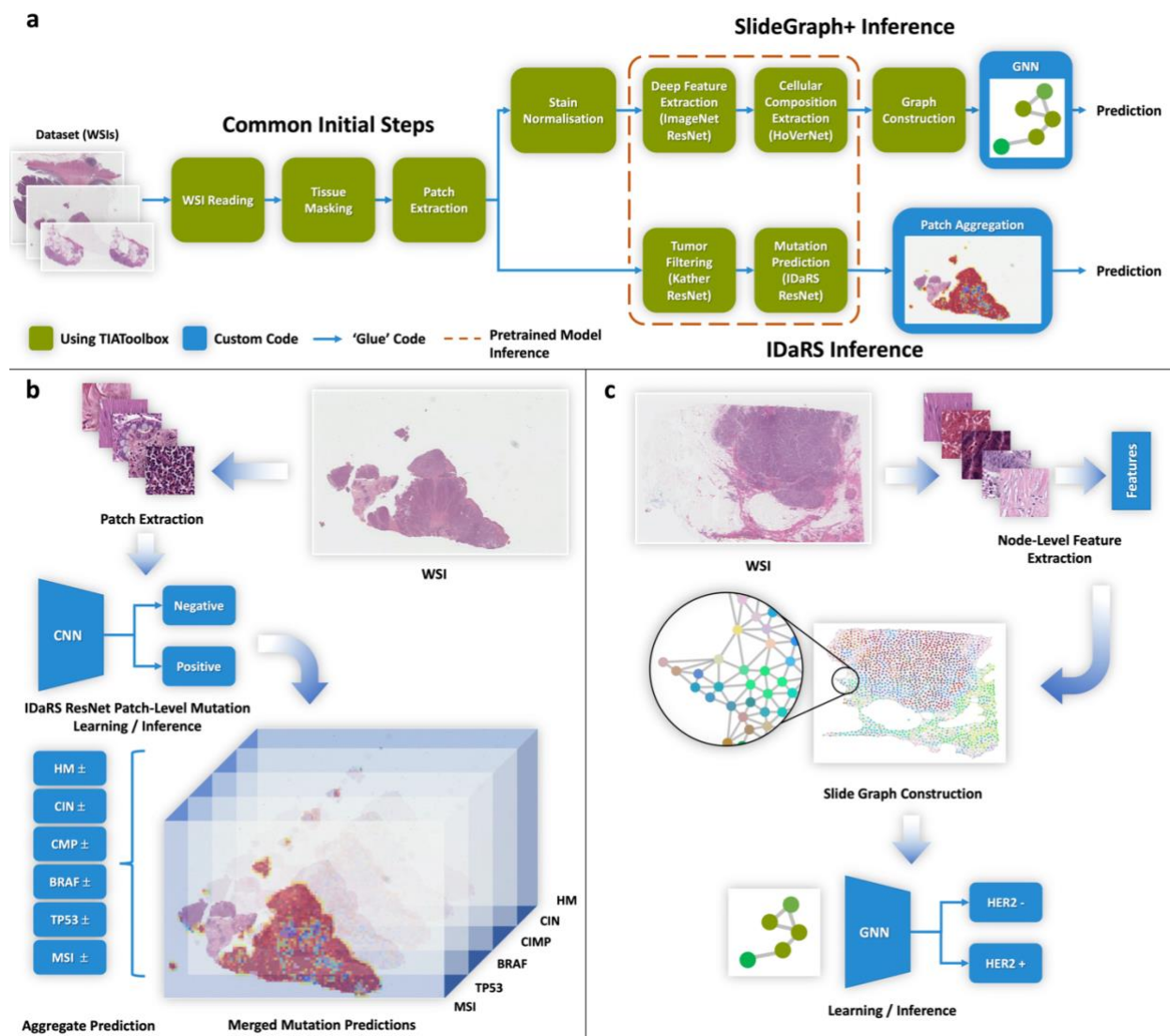


Figure 2: Panel a shows a simplified block diagram of the main steps involved in each of the example pipelines. Several of the steps at the start of these pipelines are common between the two methods and are provided by TIAToolbox. Additionally, many of the steps where the pipelines diverge are also included in the toolbox. Custom code is only required for one or two steps in each pipeline in addition to 'gluing' together each of the pipeline stages, or for some custom visualization. The same pretrained models can be used for inference in both IDaRS and SlideGraph+ pipelines. Panel b shows the main steps of the IDaRS pipeline for an example WSI. For each input patch a mutation prediction (positive or negative) is made and the results merged. Each component of the output vector is represented as a plane in a stack. Panel c shows an example WSI and the resulting graph from the SlideGraph+ pipeline. Nodes are colored in RGB space via a uniform manifold approximation and projection (UMAP) of the feature vectors assigned to the nodes.

Discussion

TIAToolbox aims to ease the handling of WSI data for analysis and visualization by providing an easy-to-use API that enables seamless reading, pre-processing and analysis of digital pathology slides. Therefore, users can use our toolbox as a "one-stop shop" for CPath and focus on model development.

Despite the rapid advancement of CPath, there has been no unified software library tailored towards the large-scale batch processing and analysis of pathology slides using state-of-the-art DL models. Previous packages have focused on a smaller subset of features, such as stain normalization or WSI reading. As can be seen in Table 1, TIAToolbox is an extensive library in terms of the number of features that it supports and therefore, we hope that CPath users will choose to use it for various applications in CPath.

We demonstrate the utility of TIAToolbox by using its core constituents to reproduce the results of two state-of-the-art AI pipelines in CPath. First, we predict the status of molecular pathways and key mutations in colorectal cancer and then we predict with SlideGraph+ the HER2 status from H&E-stained histology images. These pipelines have been implemented in the form of interactive notebooks, which can be opened and evaluated on cloud platforms such as Google Colab and Kaggle. This highlights how the toolbox can be used to significantly simplify previously complex approaches in CPath. We hope that the examples provided will motivate others to integrate the tools provided by TIAToolbox into their pipelines and help accelerate the development of new methods in CPath. The design of the toolbox ensures that the API remains consistent and easy-to-use when introducing additional models and tools. The two presented pipelines are significantly different algorithmically, but due to the modular nature of the toolbox, code segments could easily be shared between each method, as highlighted in Figure 2 where we observe that the first few steps are common due to re-use of TIAToolbox modules. Both pipelines can also share the same model inference code as highlighted in the figure. For example, all pipelines that use WSIs as input will use our advanced image reading functionality that supports a wide range of WSI formats, including JP2 and those supported by OpenSlide. Also, batch processing and patch aggregation are handled behind the scenes in both pipelines, without exposing unnecessary detail to the user.

We stress that TIAToolbox is not limited to the above two tasks and despite it being desirable to use our toolbox within all steps of a CPath pipeline, this is not a requirement. Due to its modular and extendable design, individual steps and various utility functions can be used in isolation for a broad range of applications in CPath. This helps in training new customizable algorithms on top of existing work. For example, dividing WSIs into patches before aggregating results is a widely used approach in CPath and this procedure is fully handled within the toolbox. Therefore, any pipeline that involves patch-level processing will benefit from the functionality that we provide. In fact, any patch prediction or segmentation model, based on PyTorch, can be integrated because our API is consistent irrespective of the model choice. The toolbox is not limited to the pretrained models that we provide. Any model trained outside our toolbox can be seamlessly integrated. We have demonstrated this flexibility with the help of a notebook (see Example Notebook 07) that uses natural images from the ImageNet data set. This enables one to utilize our toolbox for a large array of tasks in CPath, such as: cancer staging¹⁶, cancer subtyping²⁰, survival analysis and the prediction of additional molecular pathways²⁰. Additional tools can also be leveraged, such as efficient patch extraction, tissue mask generation, visualization and stain normalization, which can all be important steps in the automated analysis of WSIs.

Future Directions

TIAToolbox is an open-source project, to which additional pretrained models and features will continue to be added. In future, we will extend the currently available models by training on new datasets, increasing the number of applications of our toolbox. A logical extension would be to train and provide patch prediction models for colon cancer grading²¹ and tumor detection in additional tissue types. We also aim to provide instance segmentation, detection and classification models for tissue structures such as glands, blood vessels and nerves, enabling the extraction of further interpretable morphological features for downstream analysis such as linking these features to survival or investigating spatial profile of the tumor microenvironment (TME). To enable a better understanding of how models are interpreting images, we aim to include tools that enable visualization of model activation maps on images. This can be done via techniques such as class activation maps (CAM)²². Currently, our SlideGraph+ pipeline utilizes functionalities from various parts of the codebase and integrates them into a notebook. In future, we plan to fully integrate a graph predictor engine within the toolbox, in addition to our existing patch predictor, semantic segmentor and nucleus instance segmentor engines. Going forward, the TIAToolbox could act as an enabler for commercial growth and encourage the use of CPath applications in a clinical setting. We anticipate and encourage users to contribute new features and integrate the provided tools into their own CPath pipelines to accelerate development of CPath as a field.

Methods

Reading WSI Data

TIAToolbox provides a common interface for random-access reads of image regions from disk using an API defined in an abstract base class. Readers providing support for specific formats are implemented by sub-classing the base reader. We currently support reading a variety of tagged image file format (TIFF) based WSI images (including SVS, SCN, NDPI, MRXS and generic tiled TIFFs) using an OpenSlide⁵ backend, OME-TIFF files using a tiff file (<https://www.lfd.uci.edu/~gohlke/>) backend and reading from JPEG 2000 based slide formats (such as JP2 files generated by GE Omnyx scanners) using the Glymur (<https://github.com/quintusdias/glymur>) and OpenJPEG (<https://www.openjpeg.org>) as a backend. We also provide preliminary support for the rapidly evolving Zarr format (<https://zarr.readthedocs.io/en/stable>). Lastly, we consider the emerging DICOM standard for digital pathology. This is an emerging standard in digital pathology. However, there is not yet a wide enough availability of such images for us to consider this a current priority. We plan to implement DICOM support as the standard becomes more mature and gets wider adoption. Support for additional file formats may be added as and when needed.

The reader class implements read functions based on physical resolution units, such as MPP or apparent magnification. This is useful to reproduce results of published algorithms which might have been trained at a specific magnification or MPP. For example, a read can be performed with the resulting image scaled to 0.5 MPP or an apparent magnification of 20×. For efficient image reads, we use pre-computed lower resolution copies when reading to avoid costly and unnecessary re-sampling of large image regions when re-scaling to the user requested resolution and units. This is done using metadata specifying the physical resolution of the WSI and down-sampled copies of the image embedded in the WSI file. The standard *image pyramid* is illustrated in Figure 3, which depicts multiple copies of an image stacked on top of each other in decreasing resolution.

When reading a region from the WSI, we define two modes of operation: the ‘read_bounds’ mode that allows reading with a fixed field of view as resolution varies and the ‘read_rect’ mode with a fixed output size as resolution varies. The ‘read_rect’ method accepts a location and output size as arguments. This method is useful for situations where the output must remain the same size, for example while extracting patches. As illustrated in Figure 3, this results in a changing field of view as resolution varies. Conversely, ‘read_bounds’ ensures a fixed field of view at all resolutions but may result in a different output image size. This is useful if there is some tissue feature which must be isolated in the view. To the best of our knowledge, no other tool provides equal flexibility in manipulating WSI pixel data.

Our advanced WSI reading tool easily fits within various CPath pipelines due to the wide range of image formats that it supports. This is demonstrated in the patch aggregator and graph aggregator pipelines as presented earlier, where the same reading functionality is incorporated. To help researchers easily use our toolbox for WSI reading, we provide a specific notebook (see Example Notebook 01) with multiple examples.

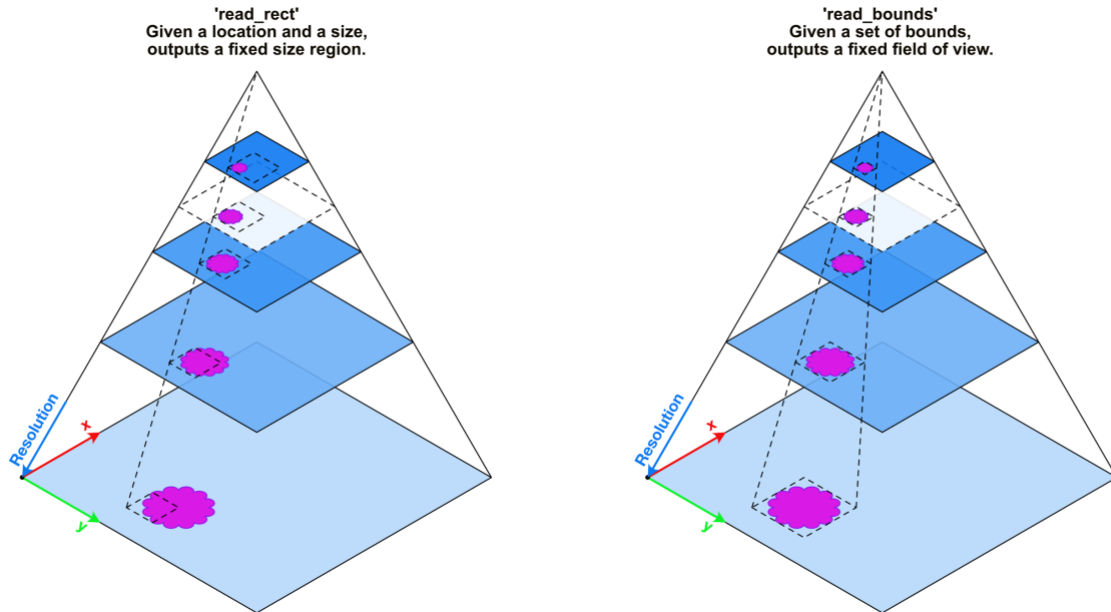


Figure 3 Illustration of two modes of random-access region reading from a multi-resolution (pyramidal) WSI. Different resolutions, stored in the WSI, are shown as blue planes stacked on top of each other. A lower resolution is a stored down-sampled copy of the highest resolution (baseline). Here both read modes, 'read_rect' and 'read_bounds', illustrate reading a region of interest containing some tissue (magenta shape) at a desired resolution. Reading of a region which is not at a pre-computed and stored resolution within the WSI (transparent white plane with a dashed outline) results in a read via a down-sample interpolation from a level with higher resolution.

Virtual Whole Slide Image Pyramid

A virtual WSI reader class enables reading image data from single resolution visual fields, such as JPEG or PNG files, using the same interface as defined for reading WSIs. This facilitates the creation of a 'virtual image pyramid' similar to the WSI pyramid in Figure 3. An effective use case for this is when reading from an image derived from a WSI, such as a tissue mask or patch classification output map. These images are typically at a much lower resolution than the full-size WSI. A virtual image pyramid can have pyramid levels specified for which there is no stored re-sampled image, or which have larger dimensions than the image data itself. However, when read using the WSIReader interface, the virtual WSI will behave as if those resolution levels do exist simply by interpolating the available image data. As a result of this behavior, the original tissue WSI and a derived image can then be read synchronously, using the same coordinates and resolution arguments as shown in Supplementary Listing A-1, simply by copying the metadata about available resolutions and the physical scale (MPP) of the baseline resolution. This relieves the user of having to perform cumbersome and error-prone conversions between different coordinate systems.

Metadata

Metadata format varies greatly between file formats. We cater for this when initializing the reader object by creating a metadata object and thus providing a unified object when accessing image file related metadata. Since this is implemented as a Python class, static analysis tools common in many integrated development environments can parse it and offer helpful auto-completion suggestions, making it easier for researchers to write and implement their pipelines. The original underlying metadata is stored so that it remains accessible if required. Additionally, important metadata such as MPP may be specified if it is not found within the file. This is commonly useful when reading large visual fields or creating virtual WSIs which have a known magnification or MPP but are missing embedded metadata.

Tissue Masking

Most WSIs contain a large amount of background area (e.g., glass, slide vendor name etc.) which is of no biological significance and can be ignored to speed up downstream processing and analysis. To identify these areas a tissue mask is commonly generated. In fact, tissue mask generation is common practice and is used in most CPath applications, including those presented in the Results section. We include some basic methods for creating such tissue masks based on Otsu thresholding²³, which separates pixels into foreground and background by minimizing the intra-class intensity variance. We show how one can combine Otsu's method with some basic morphological operations to remove small holes and regions. These masking classes can easily be extended to more advanced methods by creating a subclass of the abstract base class. A convenient function is provided to quickly generate a virtual WSI of a mask from a tissue WSI at a desired resolution. A notebook on tissue mask generation can be found within the TIAToolbox repository (see Example Notebook 03). We also provide a DL-based method for tissue masking, which is described in more detail later in the Semantic Segmentation section.

Patch Extraction

It is common to apply DL models using small images^{1,9} due to GPU memory constraints and required model complexity. As such, it is also common to divide a large WSI into small patches for training and inference with a model. This could be done simply by iterating over the WSI dimensions with a stride equal to the desired output patch size required by the model. However, there are several additional things to consider. Firstly, since pathology images are calibrated and have a known scale, patches may be extracted at a specific resolution (for example 0.5 microns-per-pixel). Our patch extractor rescales to the desired output resolution. Additionally, it can handle edge cases, such as whether to include patches which would partially extend beyond the edge of the WSI. Our patch extraction module can flexibly handle such edge cases by either discarding these patches or padding to maintain a homogeneous output size. Also, an overlap can be specified so that each extracted patch partially overlaps its neighbors. The patch extractor, implemented as an iterator, can extract patches as needed which avoids filling available memory with patches until they are needed resulting in increased efficiency. In addition to grid-based patch extraction, patches may be extracted around each point in a set of coordinates. This is particularly useful for extracting patches centered on known cell nucleus locations or randomly distributed patches across the WSI. The *PatchExtractor* also supports functionality to filter out non-tissue regions while generating patches. To highlight the effectiveness of our efficient path extraction tool, we provide an easy-to-follow interactive notebook with multiple examples (see Example Notebook 04).

Stain Normalization and Augmentation

It is well known that digital pathology images vary in their color appearance due to factors such as differences in scanner manufacture and variation in tissue preparation. For example, thicker specimens tend to stain the tissue darker. Differences in temperature, stain concentration, duration of staining and scanner type and settings can also lead to stain variation. This may harm the performance of automated methods, unless dealt with appropriately.

It is possible to perform simple color normalization using first-order statistical measurements but doing so may not correctly model the variation in stain appearance. A commonly used pathology specific pre-processing step is to perform separation of histological stains into separate optical density (OD) channels from the original red, green, blue (RGB) sensor data and optionally apply normalization across the OD channels. TIAToolbox includes several commonly used methods for normalization, including Reinhard²⁴, Macenko²⁵ and a modified Vahadane²⁶. The toolbox implementation is adapted from the StainTools (<https://github.com/Peter554/StainTools>) Python package created by Byfield. Our

implementation of Vahadane's method exchanges the SParse Modelling Software (SPAMS)²⁷ dictionary learning step with an equivalent implementation in scikit-learn²⁸ and SPAMS LARS-LASSO regression with ordinary least squares (OLS) regression. We do this to maintain cross-platform compatibility and for speed of execution. Other implementations of LARS-LASSO, for example in scikit-learn, performed orders of magnitude more slowly. We demonstrate how a user can use stain normalization in their pipelines by providing a descriptive Example Notebook (02).

Instead of normalizing image data, another method used in computational pathology is stain augmentation. This is particularly useful when training DL models to increase a model's robustness to stain variation. In TIAToolbox, we leverage stain extraction methods described above to randomly perturb the Hematoxylin and Eosin stain contents of each image used for training purposes. We also ensure integration of our stain augmentation functionality into commonly used augmentation packages, such as *alumentations*²⁹.

Models

Each CPath pipeline usually contains numerous steps and requires special consideration so that large-scale WSIs can be effectively dealt with. In fact, recent state-of-the-art models in computer vision for tasks such as segmentation⁹ and classification^{18,30} cannot be directly used when working with multi-gigapixel inputs due to memory limitations. This is due to the lack of available tools that can handle WSIs effectively in machine learning pipelines because of their high dimensionality. As the WSIs commonly get divided into smaller independent image patches, each processed by a machine learning model before merging the patch-level results, it is common practice to build custom tools from the bottom-up (i.e., starting from patches) to tackle such challenges.

Despite an increase in the number of models provided within CPath, model weights are not always available. Even when weights *are* provided, downloading and management can become challenging when working with multiple code repositories. Current DL libraries^{31,32} enable seamless downloading of models, along with their parameters, yet these models have not been trained on problems within CPath. As mentioned previously, even if these models were trained on task-specific data, additional work would still be required for use with WSIs.

To help overcome the above shortcomings, we provide an easy-to-use API where researchers can **use**, **adapt** and **create** models for CPath. TIAToolbox enables researchers with different levels of experience to easily integrate advanced CPath algorithms into their research projects. Once again, this avoids having to “reinvent the wheel”. We aim to achieve these goals by:

1. Introducing a common API to assemble predictions for common CPath tasks, such as: instance segmentation, semantic segmentation and classification.
2. Integrating several well-established models (pretrained weights and model code) for the above tasks.
3. Utilizing a common data loader to seamlessly load WSIs within each model irrespective of the task at hand.

API for Models

To enable integration of multiple models within the toolbox, we implement a common API, comprised of three components:

- **Dataset Loader:** Defines how the data is sampled and converted into batches.
- **Network Architecture:** Contains the model architecture, defines how to process an input batch and specifies how to post-process the results.

- **Engine:** Defines how the Network Architecture and Dataset Loader interact, runs inference and assembles the output into a WSI-level prediction.

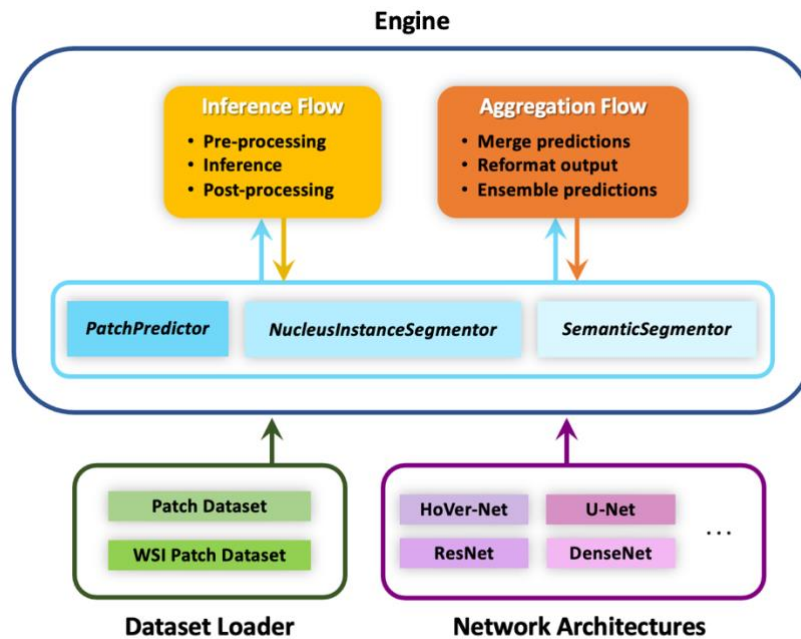


Figure 4: Diagram of the model(s) framework in the toolbox comprising three main components: dataset loader, network architectures and engine.

In the above three components, the *Dataset Loader* and *Engine* are designed in such a way that they should not need to be modified unless performing a task not supported by TIAToolbox. In our initial release, supported tasks include patch classification (*PatchPredictor*), semantic segmentation (*SemanticSegmentor*) and nucleus instance segmentation and classification (*NucleusInstanceSegmentor*). As described above, the *Network Architecture* defines the interaction of various network layers and determines how to transform the output into the final prediction via post-processing. We typically include the post-processing within the network definition because this can often be model-specific. For example, nuclear instance segmentation models may produce different outputs and therefore need to be processed according to the type of output generated. We demonstrate how the *Dataset Loader*, *Network Architecture* and *Engine* interact in Figure 4. Here, we observe that the *Dataset Loader* and *Network Architecture* are provided to the model *Engine*, where the data is then processed in the backend by the inference and aggregation flows.

In our toolbox, we support a handful of different models, such as ResNet¹⁸ and DenseNet³⁰ for patch classification, U-Net⁹ for semantic segmentation and HoVer-Net¹ for nuclear instance segmentation and classification. We also provide an extension of HoVer-Net that performs segmentation of additional regions using a single network³³. We have designed the API in such a way that using a custom model in place of our supported models is straightforward. Therefore, researchers can focus solely on model development because the handling of WSI data is done behind-the-scenes by the *Dataset Loader* and *Engine*. With just a few lines of code, supported models can be used without modification. As part of our toolbox, we provide detailed examples that describe how to easily use both pre-defined and custom-built models for a given application.

Below we provide more information on the three main tasks initially supported in the toolbox: patch classification, semantic segmentation and nuclear instance segmentation and classification. The three

tasks are similar in that they make a prediction for small image patches before aggregating the results. However, they differ in the type of output that is produced. For all these tasks, we provide detailed interactive example notebooks that clearly describe how to implement each of the models described in this paper. Sample outputs obtained using TIAToolbox for both semantic segmentation and nuclear instance segmentation & classification can be seen in Figure 5.

Patch Classification

Due to the sheer size of WSIs, DL methods in CPath often involve making a prediction based on smaller image patches. To assist with this, we provide a framework for patch-based classification, which can process image patches, larger image tiles or WSIs as input. Working with these different input types is streamlined in our toolbox and simply requires a user to define the input type as an argument in the code, as shown in Supplementary Listing A-2 and Listing A-4. When the input is an image tile or WSI, the model will process each patch within the model consecutively and then aggregate the results to give a result for each patch within the input. The default post-processing scheme makes a patch-level prediction by selecting the class with the highest probability. The final output returns the path to a file that specifies the model predictions and the corresponding patch coordinates within each WSI image. When passing WSIs as input to our patch predictor, the toolbox internally uses the *PatchExtractor* class to obtain patches for the prediction model. Arguments for this extraction are passed through from the predictor initialization to the extractor.

We supply several pretrained models with TIAToolbox to allow users to process their data without the need to train their own models. We initially include models trained to predict different tissue types within colorectal cancer image patches, as introduced by Kather *et al.*³⁴, and models to classify breast tissue image patches as either normal or tumor^{35,36}. When using models trained to predict the tissue type in colon tissue, the model will predict an input image patch to be one of the following 9 classes: background, normal mucosa, tumor, inflammatory, debris, muscle, mucous, stroma or complex stroma. A full list of the available DL models for patch classification is given in Supplementary Table A-1. For the breast tumor classification dataset, we used the PCAM training and validation splits. However, for the colorectal cancer dataset, we created our own data split to speed up the inference time. We show the validation results obtained after training each model on the two patch classification datasets in Supplementary Table A-5. We also highlight the ease of use of our patch predictor by integrating it within our example pipeline on the prediction of key mutations and molecular pathways.

Semantic Segmentation

It is often desirable to localize regions within an image, rather than assigning a value to an entire input patch. This enables a more precise delineation of region boundaries and allows morphological features to be extracted from the tissue. Semantic segmentation localizes regions, without separating touching objects belonging to the same class. This may be sufficient when analyzing different tissue regions, such as tumor and stroma and the aim is not to extract subsequent features from individual objects, such as glands and nuclei. As in the case of the patch classification model, our semantic segmentation framework processes input patches separately, before merging the results. The difference here is that a prediction is made per pixel, rather than for the entire image patch. Despite this, the API remains similar between the patch prediction and semantic segmentation tools, as can be seen in Supplementary Listing A-5. The output of the model is a 2-dimensional map of the segmentation prediction, at a resolution specified by the user.

In the toolbox, we provide a U-Net based model with a ResNet50 backbone, trained on a multi-class breast cancer semantic segmentation (BCSS) dataset³⁷. Here, the model will predict pixels to be one of: tumor, stroma, inflammatory, necrosis or other. In Supplementary Table A-6, we report the Dice

score for each class obtained by our model after training. We compare these scores to those obtained in the original paper and observe that overall, we achieve a better performance in terms of average dice score over all classes. Note that despite the models not being identical, they both use a U-Net architecture with a ResNet50 backbone. In addition, we train the same model architecture for the task of tissue masking, which can enable a more precise result than conventional threshold-based methods (see Example Notebook 06).

Nuclear Instance Segmentation and Classification

Identification and localization of different nuclei is a particularly important task in the field of CPath because it enables subsequent extraction of cell-based features that can be used in various downstream tasks, such as cancer grading³⁸ and biomarker discovery^{39,40}. Here, it is necessary to separate clustered nuclei at the output of the model to ensure that features inferred from the model output correspond to individual nuclei. Classifying the types of nuclei can help profile the tumor microenvironment because it enables the quantification of different types of cells in various areas of the tissue. For this task, like other tasks defined in TIAToolbox, individual patches are processed before merging the results. However, a more complex post-processing step is needed to ensure individual nuclei are effectively separated and classified into distinct categories.

For this task, we provide a top-performing approach for nuclear instance segmentation and classification within TIAToolbox, developed by members of our research group. The model, named HoVer-Net, has been increasingly used in recent research projects^{4,11} in CPath, due to its state-of-the-art performance across a range of different datasets. In the toolbox, we include nuclear instance segmentation models trained on the PanNuke^{41,42}, CoNSeP¹ and MoNuSAC⁴³ datasets – three widely used datasets for instance segmentation and classification of nuclei. For this, we use the original model weights and therefore, we encourage readers to refer to the original papers for details on performance. Further information on the predicted classes when using models trained on the aforementioned datasets is provided in Supplementary B. We demonstrate how easily our nuclear instance segmentation tool can be integrated into CPath pipelines by demonstrating how it can be seamlessly used during our graph aggregator example. Again, our nuclear instance segmentation and classification tool is simple to use and uses an API in line with other models in the toolbox. This can be seen in Supplementary Listing A-6.

In addition, we provide HoVer-Net+³³, which extends the original HoVer-Net model by adding a fourth decoder to perform the task of region-level semantic segmentation. In particular, the model that we provide in the toolbox has been trained on a private cohort of oral epithelial dysplasia WSIs to segment various nuclei (e.g., epithelial, inflammatory) and the different intra-epithelial layers. For further information on performance, we ask readers to refer to the original publication³³.

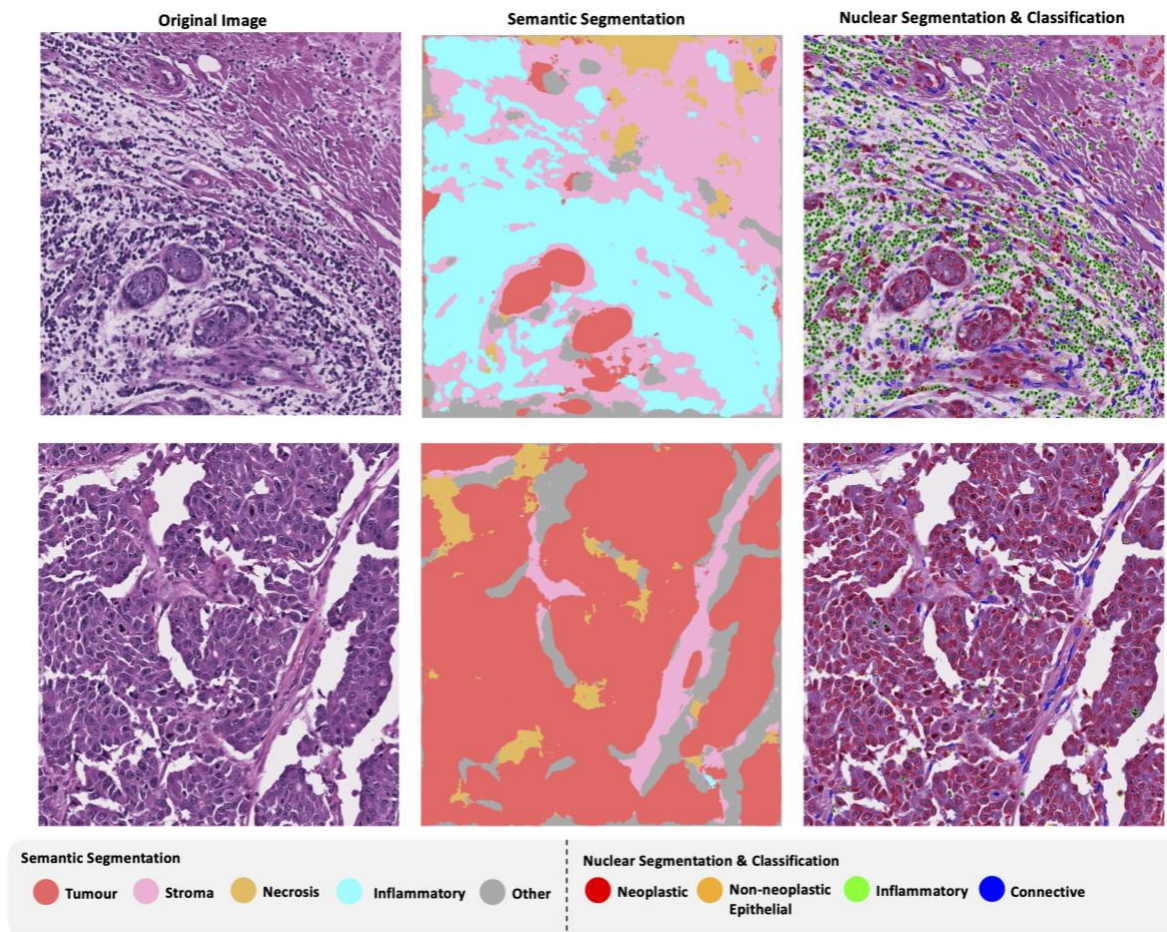


Figure 5: Left: H&E-stained input visual field, center: semantic segmentation output, right: nucleus instance segmentation and classification output.

Customizing Models

In the toolbox, we supply model architectures along with associated pretrained weights to enable models to be used out-of-the-box. However, it may be desirable to use one of our defined model architectures, but with different weights. For example, users may train a model on a different dataset, or a different training strategy may be used to obtain the weights. If a user would like to do this, the default pretrained weights may be overridden by simply adding the path to new weights as a class initialization argument. We show an example of how this can be done in Supplementary Listing A-3. Furthermore, as mentioned previously, TIAToolbox is flexible and is designed to allow users to add their own PyTorch compatible models for any of the tasks included within the toolbox. We provide sufficient examples in the form of interactive notebooks (See Example Notebook 07) to detail the steps required for model customization^{1,52}.

Deep Feature Extraction

In many CPath pipelines, it is of interest to extract deep features from input images, which can be used for downstream tasks, such as clustering⁴⁴, patch classification¹² and graph-based learning^{11,19}. Visualizing deep features can also help us to better understand which areas within an image the model may be focusing on, which can help further guide researchers with model development. Deep features are obtained by passing an image through a trained CNN and extracting the features immediately before the classification layers. A popular strategy is to utilize networks trained on the ImageNet dataset because they are optimized on millions of example images and thus are likely capable of

extracting strong features. Therefore, we ensure that ImageNet-trained models can be integrated with TIAToolbox, enabling extraction of strong deep features for downstream tasks. In future, we plan to support extracting deep features using additional datasets and different optimization techniques such as self-supervised learning.

Visualization

We provide several convenient functions for visualizing the results of model predictions. These include merging of prediction outputs and overlaying predictions on the predictor input image (Example Notebook 05) and plotting a generated graph (see Supplementary Listing A-10). Our toolbox also implements generating multi-resolution tiles in a format commonly used by interactive web-based 'slippery map' viewers such as OpenLayers (<https://openlayers.org>) where a tile server streams image regions on-demand to a web client, for display of very large images and geospatial data which can be panned and zoomed by a user. We additionally include a simple web application that can be viewed in a web browser. An example of this is shown in Supplementary Listing A-7. This can also be used in combination with the functionality of a virtual WSI to allow for ease of visualization, such as overlaying patch predictions on top of a WSI.

Annotation Storage

It is common for CPath algorithms to output geometric annotations such as cell or gland boundaries along with some associated properties such as a class label or certainty metric. In this paper and in our toolbox, we refer to this combination of a geometric entity and its associated properties as an annotation. A geometric entity may be a point, polygon, sequence of line segments ('line string') or a closed line string loop with no area ('linear ring'). Properties are defined to be a hierarchical JSON-like structure which may contain strings, integers, floats, dictionaries and lists.

Storage and retrieval of annotations are non-trivial due to the potentially enormous number of detected geometric entities, which may be several million in the case of nuclear boundaries, for just a single WSI. It is often infeasible to keep many annotations in the memory of a desktop workstation. Furthermore, searching for relevant annotations when performing downstream analysis may be slow if a naïve methodical scanning method is used. To address these issues and complement the output of nuclear segmentation models, we implement an annotation storage class that can efficiently handle a large number of geometric entities and their associated properties. We implement a base class which defines an interface extending the standard Python *MutableMapping*. This enables users to interact with our storage classes using regular Python syntax and idioms, much like working with a standard dictionary (hash table) object, thus avoiding the burden on a user to learn a new set of functions and interaction mechanics.

We provide two concrete implementations of this storage class. One that is backed by a simple in-memory dictionary (hash table) and is well suited for small annotation sets. The other uses an SQLite database to store geometric entities as well-known binary (WKB) and properties as JSON. Example usage of the SQLite annotation store class is shown in Supplementary Listing A-8. The SQLite store implements several optimizations to make it suitable for large annotation sets. Primarily an R-Tree index is used which enables fast spatial queries using bounding boxes, providing a significant improvement over naively testing every annotation in the store for intersection on each query. We extend this simple bounding box query to full binary shape predicate testing via a registered custom function call-back to Python which acts as a secondary filtering stage after the initial bounding box query. This allows querying for only annotations which intersect with any arbitrary polygon. Furthermore, we utilize a restricted subset of the Python language to provide a simple domain-specific language (DSL) and thus enabling predicate statements to be supplied to queries and evaluated in an

efficient manner for a specific backend where possible. For example, when querying annotation properties from an SQLite store, it is possible to check entries in the properties of an annotation as part of the SQL query itself. This can evaluate the query in the highly optimized SQLite query environment. It can also avoid the potentially costly decoding of the full properties on top of a roundtrip to the Python interpreter for evaluation. We also provide a fallback to a simple post-query filtering in Python should there be no optimization available. Lastly, this store enables compression (via the zlib library) of WKB geometry, significantly reducing the space required to store geometries but at the cost of additional encoding and decoding time. Point annotations are an exception to this as no WKB is stored for them. The required R-Tree index row for a point annotation contains all necessary information to recreate a point and therefore no additional storage is used.

Some convenience functions are provided for converting to and from various formats. A store may be created from or exported to several formats including a Pandas DataFrame, GeoJSON feature collection, Line-delimited JSON (ndjson), or Python dictionary. We expect our annotation store to contribute to the standardization of AI-generated annotations.

Data Availability

All datasets analysed during the production of TIAToolbox, except for one private oral dysplasia cohort dataset for HoVer-Net+, are publicly available. They can be accessed for research and non-commercial use at the following web addresses:

- The Cancer Genome Atlas (TCGA): <https://www.cancer.gov/tcga>
- PanNuke^{41,42}: https://warwick.ac.uk/fac/cross_fac/tia/data/pannuke
- PatchCamelyon (PCam)³⁵: <https://github.com/basveeling/pcam>
- Kather 100k³⁴: <https://zenodo.org/record/1214456>
- Kumar (MoNuSeg Subset)⁴⁵: <https://monuseg.grand-challenge.org/>
- MoNuSAC⁴³: <https://monusac-2020.grand-challenge.org/>
- CoNSeP¹: https://warwick.ac.uk/fac/cross_fac/tia/data/hovernet/

The private oral dysplasia cohort dataset is not available because we do not currently have ethical approval to share this dataset but the trained model is already published³³.

Code Availability

All source code for TIAToolbox is available on GitHub (<https://github.com/TissueImageAnalytics/tiatoolbox/tree/publication>). Model weights downloaded at runtime are publicly hosted and maintained on TIA Centre servers under a creative commons non-commercial use license (CC-BY-NC 4.0). All parts of the toolbox, including model weights, may be freely used for research and non-commercial purposes. Model weights are also available for commercial use on request.

Acknowledgements

SG, MJ, GH, SR, FM and NR would like to acknowledge the support from the PathLAKE digital pathology consortium which is funded from the Data to Early Diagnosis and Precision Medicine strand of the government's Industrial Strategy Challenge Fund, managed and delivered by UK Research and Innovation (UKRI). The authors would like to give thanks to Peter Byfield for the StainTools code (<https://github.com/Peter554/StainTools>) used for the stain extraction and normalization modules of the toolbox. In addition, the authors would like to acknowledge the following datasets used for training models supplied in TIAToolbox: Kather100K, PCam, CoNSeP, PanNuke and MoNuSAC.

Author Contributions

JP and SG contributed equally to this work. JP, SG, QDV, MJ, AS and SEAR contributed to the development of TIAToolbox. JP, SG, QDV, MJ and DE contributed to documentation and wrote the example notebooks. SD, GH and RMSB provided support for the development of code and helped with bug fixing and robust testing of the toolbox. MB and WL contributed towards the IDaRS and SlideGraph+ pipelines. JP, SG and SEAR wrote the manuscript with contributions from all the authors. SEAR led and jointly supervised the project with input from FM and NMR.

References

1. Graham, S., *et al.* Hover-net: Simultaneous segmentation and classification of nuclei in multi-tissue histology images. *Medical Image Analysis* **58**, 101563 (2019).
2. Janowczyk, A., Zuo, R., Gilmore, H., Feldman, M. & Madabhushi, A. HistoQC: an open-source quality control tool for digital pathology slides. *JCO clinical cancer informatics* **3**, 1-7 (2019).
3. Bilal, M., *et al.* Development and validation of a weakly supervised deep learning framework to predict the status of molecular pathways and key mutations in colorectal cancer from routine histology images: a retrospective study. *The Lancet Digital Health* (2021).
4. Lu, W., Graham, S., Bilal, M., Rajpoot, N. & Minhas, F. Capturing Cellular Topology in Multi-Gigapixel Pathology Images. in *Proceedings of the IEEE/CVF Conference on Computer Vision and Pattern Recognition Workshops* 260-261 (2020).
5. Goode, A., Gilbert, B., Harkes, J., Jukic, D. & Satyanarayanan, M. OpenSlide: A vendor-neutral software foundation for digital pathology. *Journal of pathology informatics* **4**(2013).
6. Moore, J., *et al.* OMERO and Bio-Formats 5: flexible access to large bioimaging datasets at scale. in *Medical Imaging 2015: Image Processing*, Vol. 9413 941307 (International Society for Optics and Photonics, 2015).
7. Bankhead, P., *et al.* QuPath: Open source software for digital pathology image analysis. *Scientific reports* **7**, 1-7 (2017).
8. Schmidt, U., Weigert, M., Broaddus, C. & Myers, G. Cell Detection with Star-Convex Polygons. 265-273 (Springer International Publishing, Cham, 2018).
9. Long, J., Shelhamer, E. & Darrell, T. Fully convolutional networks for semantic segmentation. in *Proceedings of the IEEE conference on computer vision and pattern recognition* 3431-3440 (2015).
10. Wang, Y., *et al.* HEAL: an automated deep learning framework for cancer histopathology image analysis. *Bioinformatics* (2021).
11. Jaume, G., *et al.* Quantifying explainers of graph neural networks in computational pathology. in *Proceedings of the IEEE/CVF Conference on Computer Vision and Pattern Recognition* 8106-8116 (2021).
12. Lu, M.Y., *et al.* Data-efficient and weakly supervised computational pathology on whole-slide images. *Nature Biomedical Engineering* **5**, 555-570 (2021).
13. Rosenthal, J., *et al.* Building tools for machine learning and artificial intelligence in cancer research: best practices and a case study with the PathML toolkit for computational pathology. (2021).
14. Marini, N., *et al.* Multi_Scale_Tools: a python library to exploit multi-scale whole slide images. *Frontiers in Computer Science*, 68 (2021).
15. Kather, J.N., *et al.* Deep learning can predict microsatellite instability directly from histology in gastrointestinal cancer. *Nature Medicine* **25**, 1054-1056 (2019).
16. Khened, M., Kori, A., Rajkumar, H., Krishnamurthi, G. & Srinivasan, B. A generalized deep learning framework for whole-slide image segmentation and analysis. *Scientific Reports* **11**, 11579 (2021).
17. Hou, L., *et al.* Patch-based convolutional neural network for whole slide tissue image classification. in *Proceedings of the IEEE conference on computer vision and pattern recognition* 2424-2433 (2016).
18. He, K., Zhang, X., Ren, S. & Sun, J. Deep residual learning for image recognition. in *Proceedings of the IEEE conference on computer vision and pattern recognition* 770-778 (2016).
19. Lu, W., Toss, M., Rakha, E., Rajpoot, N. & Minhas, F. SlideGraph+: Whole Slide Image Level Graphs to Predict HER2Status in Breast Cancer. Preprint at <https://arxiv.org/abs/2110.06042> (2021).
20. Kather, J.N., *et al.* Pan-cancer image-based detection of clinically actionable genetic alterations. *Nature Cancer* **1**, 789-799 (2020).

21. Awan, R., *et al.* Glandular Morphometrics for Objective Grading of Colorectal Adenocarcinoma Histology Images. *Scientific Reports* **7**, 16852 (2017).
22. Selvaraju, R.R., *et al.* Grad-cam: Visual explanations from deep networks via gradient-based localization. in *Proceedings of the IEEE international conference on computer vision* 618-626 (2017).
23. Otsu, N. A threshold selection method from gray-level histograms. *IEEE transactions on systems, man, and cybernetics* **9**, 62-66 (1979).
24. Reinhard, E., Adhikhmin, M., Gooch, B. & Shirley, P. Color transfer between images. *IEEE Computer graphics and applications* **21**, 34-41 (2001).
25. Macenko, M., *et al.* A method for normalizing histology slides for quantitative analysis. in *2009 IEEE International Symposium on Biomedical Imaging: From Nano to Macro* 1107-1110 (IEEE, 2009).
26. Vahadane, A., *et al.* Structure-preserving color normalization and sparse stain separation for histological images. *IEEE transactions on medical imaging* **35**, 1962-1971 (2016).
27. Mairal, J., Bach, F., Ponce, J. & Sapiro, G. Online learning for matrix factorization and sparse coding. *Journal of Machine Learning Research* **11**(2010).
28. Pedregosa, F., *et al.* Scikit-learn: Machine learning in Python. *the Journal of machine Learning research* **12**, 2825-2830 (2011).
29. Buslaev, A., *et al.* Albumentations: fast and flexible image augmentations. *Information* **11**, 125 (2020).
30. Huang, G., Liu, Z., Van Der Maaten, L. & Weinberger, K.Q. Densely connected convolutional networks. in *Proceedings of the IEEE conference on computer vision and pattern recognition* 4700-4708 (2017).
31. Paszke, A., *et al.* Pytorch: An imperative style, high-performance deep learning library. *Advances in neural information processing systems* **32**, 8026-8037 (2019).
32. Abadi, M., *et al.* Tensorflow: Large-scale machine learning on heterogeneous distributed systems. Preprint at <https://arxiv.org/abs/1603.04467> (2016).
33. Shephard, A.J., *et al.* Simultaneous Nuclear Instance and Layer Segmentation in Oral Epithelial Dysplasia. in *Proceedings of the IEEE/CVF International Conference on Computer Vision* 552-561 (2021).
34. Kather, J.N., *et al.* Predicting survival from colorectal cancer histology slides using deep learning: A retrospective multicenter study. *PLoS medicine* **16**, e1002730 (2019).
35. Veeling, B.S., Linmans, J., Winkens, J., Cohen, T. & Welling, M. Rotation equivariant cnns for digital pathology. in *International Conference on Medical image computing and computer-assisted intervention* 210-218 (Springer, 2018).
36. Bejnordi, B.E., *et al.* Diagnostic assessment of deep learning algorithms for detection of lymph node metastases in women with breast cancer. *Jama* **318**, 2199-2210 (2017).
37. Amgad, M., *et al.* Structured crowdsourcing enables convolutional segmentation of histology images. *Bioinformatics* **35**, 3461-3467 (2019).
38. Alsubaie, N., Sirinukunwattana, K., Raza, S.E.A., Snead, D. & Rajpoot, N. *A bottom-up approach for tumour differentiation in whole slide images of lung adenocarcinoma*, (SPIE, 2018).
39. Lu, C., *et al.* Nuclear shape and orientation features from H&E images predict survival in early-stage estrogen receptor-positive breast cancers. *Laboratory Investigation* **98**, 1438-1448 (2018).
40. Corredor, G., *et al.* Spatial Architecture and Arrangement of Tumor-Infiltrating Lymphocytes for Predicting Likelihood of Recurrence in Early-Stage Non-Small Cell Lung Cancer. *Clinical Cancer Research* **25**, 1526-1534 (2019).
41. Gamper, J., Alemi Koohbanani, N., Benet, K., Khuram, A. & Rajpoot, N. PanNuke: An Open Pan-Cancer Histology Dataset for Nuclei Instance Segmentation and Classification. 11-19 (Springer International Publishing, Cham, 2019).

42. Gamper, J., *et al.* Pannuke dataset extension, insights and baselines. Preprint at <https://arxiv.org/abs/2003.10778> (2020).
43. Verma, R., *et al.* MoNuSAC2020: A Multi-organ Nuclei Segmentation and Classification Challenge. *IEEE Transactions on Medical Imaging*, 1-1 (2021).
44. Abbet, C., Zlobec, I., Bozorgtabar, B. & Thiran, J.-P. Divide-and-rule: self-supervised learning for survival analysis in colorectal cancer. in *International Conference on Medical Image Computing and Computer-Assisted Intervention* 480-489 (Springer, 2020).
45. Kumar, N., *et al.* A Multi-Organ Nucleus Segmentation Challenge. *IEEE Transactions on Medical Imaging* **39**, 1380-1391 (2020).
46. Krizhevsky, A., Sutskever, I. & Hinton, G.E. Imagenet classification with deep convolutional neural networks. *Advances in neural information processing systems* **25**, 1097-1105 (2012).
47. Xie, S., Girshick, R., Dollár, P., Tu, Z. & He, K. Aggregated residual transformations for deep neural networks. in *Proceedings of the IEEE conference on computer vision and pattern recognition* 1492-1500 (2017).
48. Zagoruyko, S. & Komodakis, N. Wide residual networks. Preprint at <https://arxiv.org/abs/1605.07146> (2016).
49. Howard, A., *et al.* Searching for mobilenetv3. in *Proceedings of the IEEE/CVF International Conference on Computer Vision* 1314-1324 (2019).
50. Sandler, M., Howard, A., Zhu, M., Zhmoginov, A. & Chen, L.-C. Mobilenetv2: Inverted residuals and linear bottlenecks. in *Proceedings of the IEEE conference on computer vision and pattern recognition* 4510-4520 (2018).
51. Szegedy, C., *et al.* Going deeper with convolutions. in *Proceedings of the IEEE conference on computer vision and pattern recognition* 1-9 (2015).