

Personality profiling may help select better cleaner fish for sea-lice control in salmon farming

Benjamin Alexander Whittaker^{1,2}, Sofia Consuegra¹ and Carlos Garcia de Leaniz^{1*}

¹Department of Biosciences, Centre for Sustainable Aquatic Research, Swansea
University, Swansea, United Kingdom

²present address: University of Guelph, Department of Integrative Biology, Canada

*corresponding author: c.garciadeleaniz@swansea.ac.uk

Abstract

Lumpfish (*Cyclopterus lumpus*) are increasingly being used as cleaner fish to control parasitic sea-lice in salmon farming, but cleaning rates are very variable and not all individuals eat sea-lice, which increases the risk of emaciation and has ethical and practical implications. Selecting good cleaners is a priority to make the industry more sustainable, but there is little information on what behaviours make cleaner fish effective under a commercial setting. We examined variation in lumpfish personalities according to the five-factor personality model that takes into account differences in activity, anxiety (shelter use, thigmotaxis), aggression, sociality, and boldness (neophobia). We then quantified how variation in lumpfish personalities influenced interactions with naïve Atlantic salmon (*Salmo salar*), without the confounding effects of variation in sea-lice loads. Variation in activity, sociality, aggression and neophobia, but not in anxiety, was repeatable, which is consistent with a heritable basis. Neophilic, non-aggressive lumpfish spent more time inspecting salmon than neophobic and aggressive individuals, but salmon fled in the presence of the most active and social individuals, suggesting there may be an optimal cleaner fish personality amenable to artificial selection. The personality screening protocols developed in this study could inform a more efficient use of cleaner fish in salmon farming and reduce the number of individuals required to control sea-lice.

Introduction

Various species of wrasse and lumpfish (*Cyclopterus lumpus*) are increasingly being used as facultative cleaner fish to remove parasitic sea-lice from farmed salmon (Powell *et al.*, 2018b; Treasurer, 2018a; Treasurer, 2018b). Using facultative cleaner fish for pest control offers many advantages over chemical methods (Powell *et al.*, 2018b), but relies on cleaner fish engaging in parasite removal (delousing) under a commercial setting. However, lumpfish do not generally feed on sea-lice, or act as cleaner fish, in the wild (Davenport, 1985; Powell *et al.*, 2018a), which poses a challenge for optimizing their use in salmon farming. Lumpfish are opportunistic generalist feeders that will graze on sea-lice in salmon cages, especially when alternate food sources are limited (Imsland *et al.*, 2015a; Imsland *et al.*, 2016a). Typically only 13-38% of lumpfish consume sea-lice in salmon cages (Eliassen *et al.*, 2018; Imsland *et al.*, 2015a; Imsland *et al.*, 2014; Imsland *et al.*, 2016b), the majority feed on salmon pellets or graze on plankton (Johannesen *et al.*, 2018), particularly during the summer (Eliassen *et al.*, 2018). This has attracted criticism from regulatory agencies and animal welfare organisations, who point out that many cleaner fish die of malnutrition and suffer from low welfare because they are being used for a task they do not naturally do (European Union Reference Laboratory for Fish Diseases, 2016; Stranden, 2020). A call has been made for the use of cleaner fish to stop until their welfare can be guaranteed and the sources of mortality are addressed (Compassion in World Farming, 2018; OneKind, 2018). There is, therefore, a need to select individuals that readily engage in cleaning behaviour and consume sea-lice, as this would increase delousing rates with fewer cleaner fish, improve welfare, and reduce the risk of emaciation (Gutierrez Rabadan *et al.*, 2020).

Lumpfish can be effective cleaners (Imsland *et al.*, 2014; Imsland *et al.*, 2018) and reduce sea-lice loads on salmon by as much as 93% under the right conditions (Imsland *et al.*, 2016b), but seemingly this is because certain individuals do most of the cleaning. Individual variation in cleaning behaviour is common among facultative cleaner fish, and some individuals may attend clients and engage in cleaning, while others ignore them (Morado *et al.*, 2019). Understanding such variation is important because cleaning behaviour appears to be inherited (Imsland *et al.*, 2016b), and the ability to screen individuals with a predisposition for cleaning may facilitate a selective breeding program (Powell *et al.*, 2018b). However, there is a paucity of robust data on individual variation in cleaning behaviour and little information on lumpfish-salmon interactions (Overton *et al.*, 2020), which has so far hampered progress towards the domestication of lumpfish as cleaner fish in aquaculture.

Domestication requires animals to adapt to life in captivity (Price, 1999), to express some behaviours and to suppress others (Belyaev, 1969; Jensen, 2014). Juvenile lumpfish aggregate in clumps and are sit and wait feeders (Powell *et al.*, 2018a; Powell *et al.*, 2018b). They are also poor swimmers (Hvas *et al.*, 2018), have a low aerobic scope (Killen *et al.*, 2007b), and use their suction cup to attach to shelters to conserve energy (Killen *et al.*, 2007a). They are not well adapted to pursue prey, and do not normally interact with other fish species. To function as cleaner fish, lumpfish may need to overcome the fear of approaching a much larger “client” fish, change their social behaviour, and become more exploratory, active and inquisitive. More specifically, delousing salmon requires lumpfish to take four successive steps: (1) leave the safety of being in a group and/or in a shelter, (2) approach a much larger and faster swimming fish (salmon), (3) identify clients that are infested with sea-lice, and (4) remove sea-lice from the skin of a fast moving target. This sequence of events

requires a particular skillset that not all individuals may possess, which might explain why only a small proportion of lumpfish clean parasitic sea-lice in salmon farms. We therefore hypothesized that only those individuals that have a bold personality, show exploratory behaviour, or are more active and willing to take risks may interact with salmon. Identifying those individuals might be possible through personality profiling *sensu* McCann (1992).

Personality profiling has been used to understand variation in personalities in humans (Costa Jr & McCrae, 1990; Neal *et al.*, 2012; Van Dijk *et al.*, 2017), but increasingly also in non-humans (Gosling & John, 1999), where it is referred as temperament or stress coping styles (Dingemanse *et al.*, 2010; Piersma & Drent, 2003). Personality traits are repeatable in many taxa, including fish (Castanheira *et al.*, 2017; Elias *et al.*, 2018; Vargas *et al.*, 2018), which opens possibilities for artificial selection and the domestication of cleaner fish in aquaculture. We therefore tested if personality profiling using the five-factor model of non-human animal personality (Gosling & John, 1999) could be used to identify lumpfish better suited to behave as cleaner fish in salmon farms. We also tested if behaviours relevant to delousing were repeatable, as only repeatable behaviours can be inherited and modified by artificial selection during animal domestication (Belyaev, 1979).

Materials and Methods

We used a four-step approach to assess the effects of lumpfish personality on lumpfish-salmon interactions. We first screened individually tagged lumpfish for five dimensions of animal personality (activity, sociality, anxiety, aggression, and boldness; (Gosling & John, 1999) in the absence of salmon. We then retested fish after ~1 month to assess the repeatability of behaviour along each dimension, and

generated personality scores from Principal Component Analysis to account for correlated behaviours. Finally, we examined whether lumpfish personality scores predicted lumpfish-salmon interactions.

Source and rearing of experimental fish

Lumpfish eggs were collected from wild adults caught in Iceland and the English Channel during the winter of 2016/2017, representing two genetically distinct populations (Whittaker *et al.*, 2018). Juveniles were reared for one year (mean weight = 114.8 ±9.7 g SE) under recirculation aquaculture conditions and a sample allocated at random to eight 1500L tanks (1.4 m diameter, 0.9 m depth; 33 fish/tank; initial biomass = 75.37 ±30.99 g/m³) and individually marked with PIT tags (7 x 1.35 mm, Loligo) in March 2017. Water temperature was maintained at 11-13C, salinity at 28-32ppt, and photoperiod at 12D:12L; fish were fed twice per day (Amber Neptune Skretting, UK) at 2% tank biomass, as recommended for the species (Powell *et al.*, 2018b).

Personality profiling

We filmed 38 individually tagged lumpfish of two origins (Iceland, n = 16; England, n = 22) over four consecutive phases, each lasting 10 minutes, using CCTV (1080p camera, Sannce, Hong Kong). In phase 1 (neutral), a single lumpfish was introduced into one of two white rectangular test arenas (L120 cm x W55 cm x D25 cm) and was left to acclimatise for 10 mins without any additional stimulus. The test arenas were divided into three equal zones using tape to facilitate video analysis, were each fitted with an air stone to maintain dissolved oxygen at 100% saturation and were surrounded by a black tarpaulin screen to minimise disruption. In phase 2 (shelter) a

black smooth PVC panel was introduced to one end of the test arena to provide a refuge, as lumpfish seek smooth, dark substrates (Imsland *et al.*, 2015b). In phase 3 (mirror), a mirror was added to the arena, opposite to the shelter. Finally, in phase 4 (novel), a novel object was placed at the centre of the arena (**Figure 1**), a yellow golf ball in the first trial and a green Lego brick in the second repeat to prevent habituation. The four screening phases were conducted in the same order for every fish. Water was replaced between fish to avoid a build-up of stress hormones.

Behaviours were scored from video recordings using BORIS version 7.75 (Friard & Gamba, 2016) by one person who did not have knowledge of the identity of the fish or the trial conditions. We examined two metrics of activity in phase 1 (neutral): crossing speed across the central portion of the test arena (cm/s), and number of crosses between the three arena sections. We also measured activity by recording the total time spent swimming (s) throughout all four phases. Anxiety was assessed by recording the total time spent within 10cm of the tank walls (thigmotaxis) during phase 1 (neutral) and also the total time spent within 10cm of the black panel in phase 2 (shelter), as both are established methods of assessing anxiety in fish (Cianca *et al.*, 2013; Godwin *et al.*, 2012). To score aggression, we counted the number of agonistic actions (nips and charges) directed towards the mirror image (Rodriguez-Barreto *et al.*, 2019) during phase 3 (mirror). The number of approaches to the mirror that did not result in body contact, as well as the time spent within close proximity (<10 cm) of the mirror during this phase were used as measures of sociality (Cattelan *et al.*, 2017). As a measure of boldness, we counted the number of times individuals were within 10 cm of the novel object phase 4 (novel), the time latency to first approach the novel object, and average distance (cm) from novel object at one minute intervals, as these are measures of neophobia that map well into the boldness-shyness continuum

(Champneys *et al.*, 2018). Collectively, these metrics capture variation in five dimensions of fish personality and have been associated with the expression of particular genes in the fish brain (Champneys *et al.*, 2018; Rodriguez-Barreto *et al.*, 2019). We also measured body mass (g) and calculated specific growth rate (SGR%, (Lugert *et al.*, 2016) between the first and second repeated trials to account for the influence of feeding motivation on behaviour.

Quantifying lumpfish-salmon interactions

Atlantic salmon (*Salmo salar*) post-smolts ($n = 20$, mean mass = 175.6 ± 37.6 g SE) were obtained from a commercial farm in Scotland in July 2017 and quarantined for one month in two 1500 litre recirculating aquaculture tanks (1.4m diameter, 0.9m depth), at a density of 10 salmon per tank (initial biomass = 117.04 ± 25.06 g/m³ SE). In August 2017, the same tagged lumpfish that had previously been screened for personality traits ($n = 38$) were introduced singly into one of the two salmon tanks and recorded via CCTV for 20 minutes each. An ethogram based on previous studies on cleaner fish (Bshary & Côté, 2008; Horton, 2011) was constructed from the following three behaviours: time spent visually assessing salmon, often from multiple angles (“inspection, s”), time spent following salmon (“pursuit, s”), and number of times salmon fled when they were approached by lumpfish (“flee”, no/min). Salmon were free of sea-lice to ensure that interactions with lumpfish were unaffected by variation in sea-lice loads, thereby ensuring consistency between replicated trials and between individuals. This would not have been possible if sea-lice loads had decreased as a result of lumpfish delousing, as this might have changed the behaviour of both species. All lumpfish were naive to salmon and salmon were also naive to lumpfish initially, but they were exposed to multiple lumpfish over the course of the study.

Repeatability of behaviours

R version 4.0. (R Core Team, 2020) was used for all statistical analyses. To assess the repeatability (R) of behaviours we used mixed models to identify significant behavioural covariates using the *lme4* package (Bates *et al.*, 2014). We employed linear mixed models (LMM) in the case of continuous behavioural metrics (e.g. duration of events, swimming speed and distance to novel object), and generalized linear mixed-models (GLMM) in the case of frequency of events (e.g. number of crosses across the test arena, and approaches to the mirror or the novel object). We included sex, stock origin (Iceland, England), specific growth rate (SGR, %), and time of filming (days elapsed) as fixed factors, and test tank, home tank, and fish ID as random factors to account for repeated sampling and to control for grouping and potential non-independence of results. For each behavioural metric we identified minimal adequate models (Crawley, 2013) based on changes on AICc using the *dredge* function in the *MuMIn* package (Barton & Barton, 2015), and used the *anova* command and the Likelihood-Ratio Test (LRT) to compare these to null models without predictors. Model assumptions were checked by inspection of diagnostic plots with *sjPlot* (Lüdtke, 2020), and if these were not met, the significance of results was compared with robust estimates using the *robustlmm* package (Koller, 2016). The most plausible models were refitted by Restricted Maximum Likelihood (REML) to derive corrected probability values.

We used the *rptR* package (Stoffel *et al.*, 2017) to calculate adjusted repeatabilities (R ; (Nakagawa & Schielzeth, 2010; Schuster *et al.*, 2017), using fish ID ($n = 38$) and repeat ($n = 2$) as grouping variables, and any significant covariates identified above; 95% confidence intervals were calculated via 1,000 bootstraps, using a gaussian or a poisson link, depending on the nature of the response variables.

Behaviour was considered repeatable if the lower 95% CI exceeded zero (Neumann *et al.*, 2013) and repeatability was deemed low ($R < 0.2$), moderate ($R = 0.2-0.4$), or strong ($R > 0.4$), as in other studies of animal personalities (Bohn *et al.*, 2017). Non-repeatable behaviours were excluded from analysis and repeatable behaviours were averaged to obtain a single value per fish.

Personality scores and effects on lumpfish-salmon interactions

Four repeatable behaviours identified from the personality profiling (crossing frequency, approaches to mirror, charges at mirror, and approaches to novel object) were converted to frequency rates (No/min) and used to generate personality scores via Principal Component Analysis to account for correlated behaviours and lack of independence (Gosling & John, 1999; Wilson *et al.*, 2014). PC scores were rescaled from 0 to 1 using the *scales* package (Wickham *et al.*, 2020) to facilitate comparisons and ensure equal weighting. To examine the effect of personality on lumpfish-salmon interactions we modelled the time lumpfish spent inspecting and pursuing salmon, as well as the salmon fleeing rate, as a function of lumpfish personality scores while statistically controlling for tank effects, stock origin, sex, growth rate, and time elapsing (to account for the cumulative exposure of salmon to lumpfish). We modelled each interaction separately via univariate LMMs and also together via MANOVA, and derived minimal adequate models via model simplification as described above for the repeatability study.

Ethics declaration and approval for animal experiments

This study adhered to the ARRIVE guidelines. All experimental procedures were approved by Swansea University, Animal Welfare Review Body, permit IP1617-27.

Results

Repeatability of behaviours

Crossing frequency was influenced by sex (parameter estimate (male) = 0.594 ± 0.222 , $z = 2.675$, $P = 0.007$) and specific growth rate (parameter estimate = 0.525 ± 0.195 , $z = 2.688$, $P = 0.007$), as females and faster growing fish were more active and crossed the test arena more frequently. Aggression decreased the second time the fish were tested against their mirror image (parameter estimate day = -0.010 , ± 0.004 , $z = -2.352$, $P = 0.019$), as did the frequency of non-aggressive mirror interactions (parameter estimate day = -0.005 ± 0.001 , $z = -3.783$, $P < 0.001$). Stock origin influenced the time individuals spent close to the tank perimeter (parameter estimate (UK) = 56.18 ± 22.72 , $t_{74} = 2.473$, $P = 0.016$) and the number of approaches made to novel objects (parameter estimate (UK) = -1.611 ± 0.386 , $z = -4.171$, $P < 0.001$), with fish from the English Channel spending more time close to the walls and making fewer interactions with the novel object than fish from Icelandic origin. We therefore included sex and specific growth rate to estimate the adjusted repeatability of crossing frequency, geographic origin to estimate the repeatability of time spent close to the walls and frequency of encounters with the novel object, and time between trials to estimate the repeatability of interactions with the mirror image.

Of the 11 behaviours considered, 4 were repeatable corresponding to the activity, aggression, sociality and boldness dimensions of animal personality (**Table 1**). Crossing speed and time spent swimming were strongly repeatable ($R > 0.4$), crossing frequency and frequency of interactions with the mirror and the novel object were moderately repeatable ($R = 0.2-0.4$), while aggression had a low repeatability

($R = 0.184$). Distance to the novel object and the two measures of anxiety were not repeatable.

Personality scores

Significant positive correlations were found between two of the four repeatable behaviours (**Table 2**). Activity was positively correlated with sociality, and sociality was positively correlated with aggression. The first two principal components accounted for 68% of the variation in personality. PC1 was mostly driven by sociality (loading = -0.64) and activity (loading = -0.58), while PC2 mostly measured boldness (loading = +0.94) against aggression (loading = -0.26). PC3 was not significant in any of the models considered.

Lumpfish-salmon interactions

In the presence of salmon, most lumpfish engaged in visual inspections (89% of cases) and triggered one or more flight responses from salmon (89% of cases), but only 34% of lumpfish pursued salmon (**Figure 2**). Lumpfish that spent more time inspecting salmon were also more likely to pursue them (Spearman $\rho = 0.550$, $df = 37$, $P < 0.001$). Time spent pursuing salmon was not explained by personality ($F_{7,30} = 1.066$, $P = 0.408$) but lumpfish personality predicted the time spent inspecting salmon (PC2 estimate = -18.151 ± 8.861 , $t_{34.385} = -2.048$, $P = 0.048$), as well as the frequency of salmon flights (PC1 estimate = -1.005 ± 0.242 , $t_{33.419} = -4.150$, $P < 0.001$) while statistically controlling for significant random tank effects. Individuals that were not afraid of the novel object during the initial behavioural profiling (neophilic) subsequently spent more time inspecting salmon than neophobic fish, as

did the least aggressive lumpfish (PC2 - **Figure 3A**). Salmon were more likely to flee in the presence of the most active and social individuals (PC1 - **Figure 3B**).

MANOVA indicated that lumpfish-salmon interactions were predicted by personality (PC1 Pillai = 0.422, $F_{3,33} = 8.047$, $P < 0.001$) and growth rate (Pillai = 0.332, $F_{3,33} = 5.480$, $P = 0.004$), and provided a significantly better fit than a null model ($F_{6,68} = 5.398$, $P < 0.001$).

Discussion

Our study shows that personality profiling can be used to predict how lumpfish interact with salmon and, possibly, whether they will make good cleaner fish. In particular, we show that bold, neophilic lumpfish were more likely to inspect salmon, while the most active and social individuals were more likely to cause salmon to flee. As these behaviours were repeatable, and therefore likely heritable (Dohm, 2002; Lynch & Walsh, 1998), this suggests that artificial selection could be used to select better cleaner fish through domestication (Powell *et al.*, 2018b). This is consistent with results that show that delousing behaviour is parentally controlled (Imsland *et al.*, 2016b) and thus likely inherited. However, of the 37% of lumpfish that pursued salmon in our study, only 5% did so without causing salmon to flee. The challenge for domesticating lumpfish as cleaner fish, hence, might be how to select individuals that are bold enough to approach salmon in search of sea-lice, but not so aggressively as to cause salmon to flee.

The distribution of lumpfish-salmon interactions was highly skewed. The majority of lumpfish had limited interactions with salmon, but a few individuals interacted much more than the rest. For example, 7 individuals accounted for 60% of all the inspections, and just three individuals accounted for 60% of all the pursuits (Figure 2) with only 37% of them pursuing salmon. This is consistent with results from diet analysis that indicate that only ~30% of lumpfish consume sea-lice in salmon cages (Eliassen *et al.*, 2018; Imsland *et al.*, 2015a; Imsland *et al.*, 2014; Imsland *et al.*, 2016b), which our results suggest might be due to variation in animal personalities.

Boldness is a significant predictor of interactions in dedicated cleaner fish (Dunkley *et al.*, 2019; Wilson *et al.*, 2014), and it was repeatable in our study, suggesting it could targeted by artificial selection. Likewise, activity, exploratory behaviour and aggression were also repeatable, and several studies have shown that these traits are inherited in several fish species (Ariyomo *et al.*, 2013; Bakker, 1986; Chervet *et al.*, 2011; Magnhagen, 2012; Sutrisno *et al.*, 2011).

Breeding programs could establish pedigree lines from lumpfish families with proven delousing ability in sea-cages (Imsland *et al.*, 2016b) and select for stocks with desirable behaviours. For example, fish from Icelandic origin in our study spent significantly more time interacting with the novel object than fish from the English Channel, suggesting there may be genetic differences in risk-taking behaviour that could be improved through selective breeding. There is no information on the heritability of any behavioural traits in lumpfish, but the estimated repeatabilities for swimming duration ($R = 0.422$) and frequency of approaches to the novel object ($R = 0.340$) could be used as upper values for narrow sense heritability (h^2) of pursuing and inspection behaviours, respectively (Dohm, 2002; Lynch & Walsh, 1998). Using these values to estimate the response to artificial selection suggests that selecting the top 10% most active and boldest lumpfish for breeding could increase the time lumpfish spend inspecting and pursuing salmon 1.4-3.5 times within one generation, respectively. In this sense, protocols could be developed to screen lumpfish personalities in hatcheries, and exclude from subsequent rearing and deployment those individuals less likely to approach salmon. Currently, many lumpfish do not engage in cleaning behaviour, and selecting for behaviours that make good cleaners

could drastically reduce the number of lumpfish required on farms, reducing costs and improving welfare (Garcia de Leaniz *et al.*, 2021).

The selection of “elite” lines of cleaner fish that are particularly bold and active, but not overly aggressive, could be done in different ways. For example, one way boldness could be selected is by targeting lumpfish with high metabolic rate (Hvas *et al.*, 2018) and low cortisol response (Gutierrez Rabadan *et al.*, 2021), or more efficiently, by targeting genes associated with boldness and aggression (Rodriguez-Barreto *et al.*, 2019). Metabolic rate can be used to predict boldness in some fish species (Killen *et al.*, 2012) and can also be used to predict foraging mode (active vs passive) in lumpfish (Killen *et al.*, 2007a). This is important, as presumably only active lumpfish that swim to pursue their prey (as opposite to passively foraging while clinging) will make efficient cleaners.

One reason why some farmed lumpfish do not survive the salmon production cycle in sea cages is because they fail to feed and adapt to a novel environment (Imsland *et al.*, 2020; Imsland *et al.*, 2019b). Failure of hatchery-reared lumpfish to adapt to the sea-cage environment could be due to phenotypic mismatch, as seen in other species (Stringwell *et al.*, 2014), but steps can be taken to reduce maladaptation. Fish personality is shaped by both intrinsic and extrinsic drivers (Brown *et al.*, 2011), most notably through early experience (Dingemanse *et al.*, 2009; Huntingford & Garcia Garcia de Leaniz, 1997), and one way maladaptation could be reduced is by manipulating the rearing environment through environmental and social enrichment. Environmental enrichment can modify risk-taking behaviours in fish very rapidly (Roberts *et al.*, 2011; Roberts *et al.*, 2014) and this could perhaps be used to

suppress fear and enhance cleaning behaviour in lumpfish. For example, feeding sea-lice and live prey to lumpfish prior to cage deployment was found to promote subsequent delousing behaviour (Imsland *et al.*, 2019a), and previous exposure to salmon may also reduce stress and improve cohabitation (Staven *et al.*, 2019). In general, intensive fish farming seems to modify fish behaviours in predictable ways, by altering patterns of gene expression in the fish brain that can be targeted by selective breeding (Rodriguez-Barreto *et al.*, 2019). Social enrichment prior to deployment in sea cages could be used to modify behaviours and facilitate adaptation of lumpfish to sea cages. For example, living in socially impoverished habitats decreases cleaning efficacy in wrasse (Wismer *et al.*, 2014), and the same could happen in lumpfish.

Cleaning behaviour could also be improved through size selection and manipulation of growth rate. We found that faster growing lumpfish interacted more with salmon than slower growing fish, suggesting that selecting for fast growing lumpfish might also select for more active, bolder lumpfish which might perform better as cleaner fish. Lumpfish hatcheries typically supply relatively small juveniles to sea-cages (approx. 20g), as this is thought to be an optimal size for cleaning behaviour (Imsland *et al.*, 2016c). However, more recent studies indicate that body size accounts for little variation in delousing rates, and that smaller lumpfish are more likely to have empty stomachs (Eliassen *et al.*, 2018). Larger cleaner wrasse also interact more with salmon (Whittaker *et al.*, 2021) and a re-assessment of the optimal size for lumpfish deployment warrants further study.

In summary, our results indicate that only a small proportion of lumpfish interact with salmon in ways that are conducive to cleaning behaviour. As some personality traits were found to be repeatable, this opens the possibility for artificially selecting cleaner fish with desired behaviours, a process that our study suggests could be rapid. Failure to feed on sea-lice is a major cause of emaciation and mortality among lumpfish used as cleaner in salmon farming (Gutierrez Rabadan *et al.*, 2021), and behavioural profiling could be used to select better cleaner fish and make the industry more sustainable. Further studies, using pedigree analysis of variation in delousing rates could be used to estimate the heritability of personality traits and their association with sea-lice removal.

Acknowledgements

We are grateful to Jessica Minett and Kayla Fairfield for assistance with the personality screening and to Paul Howes, Becky Stringwell and the CSAR technicians for logistic support and help with fish husbandry. The study was funded by Marine Harvest Scotland through the LUMPFISH project and the Welsh Government via the European Regional Development Fund (SMARTAQUA Operation). The funders had no role in study design, data collection and analysis, decision to publish, or preparation of the manuscript.

Data availability

The data files for this study have been deposited in figshare
<https://doi.org/10.6084/m9.figshare.14626839.v1>

References

- Ariyomo TO, Carter M, Watt PJ (2013) Heritability of boldness and aggressiveness in the zebrafish. *Behavior Genetics*, **43**, 161-167.
- Bakker TC (1986) Aggressiveness in sticklebacks (*Gasterosteus aculeatus* L.): a behaviour-genetic study. *Behaviour*, **98**, 1-144.
- Barton K, Barton MK (2015) Package 'MuMIn'.
- Belyaev DK (1969) Domestication of animals. *Science*, **5**, 47-52.
- Belyaev DK (1979) Destabilizing selection as a factor in domestication. *Journal of Heredity*, **70**, 301-308.
- Bohn SJ, Webber QM, Florko KR, Paslawski KR, Peterson AM, Piche JE, Menzies AK, Willis CK (2017) Personality predicts ectoparasite abundance in an asocial sciurid. *Ethology*, **123**, 761-771.
- Brown C, Laland K, Krause J (2011) *Fish cognition and behavior*, John Wiley & Sons.
- Bshary R, Côté IM (2008) New perspectives on marine cleaning mutualism. In: *Fish Behaviour* (ed. by Magnhagen C, Braithwaite V, Forsgren E, Kapoor B). Science Publishers, Enfield, pp. 563-592.
- Castanheira MF, Conceição LEC, Millot S, Rey S, Bégout M-L, Damsgård B, Kristiansen T, Höglund E, Øverli Ø, Martins CIM (2017) Coping styles in farmed fish: consequences for aquaculture. *Reviews in Aquaculture*, **9**, 23-41.
- Cattelan S, Lucon-Xiccato T, Pilastro A, Griggio M (2017) Is the mirror test a valid measure of fish sociability? *Animal behaviour*, **127**, 109--116.
- Champneys T, Castaldo G, Consuegra S, Garcia de Leaniz C (2018) Density-dependent changes in neophobia and stress-coping styles in the world's oldest farmed fish. *Royal Society Open Science*, **5**, 181473.

- Chervet N, Zöttl M, Schürch R, Taborsky M, Heg D (2011) Repeatability and heritability of behavioural types in a social cichlid. *International Journal of Evolutionary Biology*, **2011**.
- Cianca V, Bartolini T, Porfiri M, Macrì S (2013) A robotics-based behavioral paradigm to measure anxiety-related responses in zebrafish. *PLoS One* **8**, e69661.
- Compassion in World Farming (2018) Scottish Parliament. EISF038. Environment, Climate Change and Land Reform Committee. Environmental impacts of salmon farming. Written submission from Compassion in World Farming. CIFW, pp. 4.
- Costa Jr PT, McCrae RR (1990) Personality disorders and the five-factor model of personality. *Journal of personality disorders*, **4**, 362-371.
- Crawley MJ (2013) *The R Book*, John Wiley & Sons, Chichester, UK, 975 p.
- Davenport J (1985) *Synopsis of biological data on the lumpsucker, Cyclopterus lumpus (Linnaeus, 1758)*, Food & Agriculture Org.
- Dingemanse NJ, Kazem AJ, Réale D, Wright J (2010) Behavioural reaction norms: animal personality meets individual plasticity. *Trends in ecology & evolution*, **25**, 81-89.
- Dingemanse NJ, Van der Plas F, Wright J, Réale D, Schrama M, Roff DA, Van der Zee E, Barber I (2009) Individual experience and evolutionary history of predation affect expression of heritable variation in fish personality and morphology. *Proc. R. Soc. B*, **276**, 1285-1293.
- Dohm M (2002) Repeatability estimates do not always set an upper limit to heritability. *Functional Ecology*, 273-280.

- Dunkley K, Ioannou C, Whittey K, Cable J, Perkins S (2019) Cleaner personality and client identity have joint consequences on cleaning interaction dynamics. *Behavioral Ecology*.
- Elias A, Thrower F, Nichols KM (2018) Rainbow trout personality: Individual behavioural variation in juvenile *Oncorhynchus mykiss*. *Behaviour*, **155**, 205-230.
- Eliassen K, Danielsen E, Johannesen Á, Joensen LL, Patursson EJ (2018) The cleaning efficacy of lumpfish (*Cyclopterus lumpus* L.) in Faroese salmon (*Salmo salar* L.) farming pens in relation to lumpfish size and seasonality. *Aquaculture*, **488**, 61-65.
- European Union Reference Laboratory for Fish Diseases (2016) Cleaner fish in aquaculture: Health management and legislative issues National Veterinary Institute, Technical University of Denmark, Copenhagen, pp. 35.
- Friard O, Gamba M (2016) BORIS: a free, versatile open-source event-logging software for video/audio coding and live observations. *Methods in Ecology and Evolution*, **7**, 1325--1330.
- Garcia de Leaniz C, Gutierrez Rabadan C, Barrento SI, Stringwell R, Howes PN, Whittaker BA, Minett JF, Smith RG, Pooley CL, Overland BJ, Biddiscombe L, Lloyd R, Consuegra S, Maddocks JK, Deacon PTJ, Jennings BT, Rey Planellas S, Deakin A, Moore AI, Phillips D, Bardera G, Castanheira MF, Scolamacchia M, Clarke N, Parker O, Avizienius J, Johnstone M, Pavlidis M (2021) Addressing the welfare needs of farmed lumpfish: knowledge gaps, challenges and solutions *Reviews in Aquaculture*.
- Godwin J, Sawyer S, Perrin F, Oxendine SE, Kezios ZD (2012) Adapting the open field test to assess anxiety-related behavior in zebrafish. 181--189.

- Gosling SD, John OP (1999) Personality dimensions in nonhuman animals a crossspecies review. *Current Directions in Psychological Science* **8**, 69-75.
- Gutierrez Rabadan C, Spreadbury C, Consuegra S, Garcia de Leaniz C (2020) Development, validation and testing of an Operational Welfare Score Index for farmed lumpfish *Cyclopterus lumpus* L. . *Aquaculture*.
- Gutierrez Rabadan C, Spreadbury C, Consuegra S, Garcia de Leaniz C (2021) Development, validation and testing of an Operational Welfare Score Index for farmed lumpfish *Cyclopterus lumpus* L. *Aquaculture*, **531**, 735777.
- Horton S (2011) Factors affecting advertising in Indonesian adult and juvenile bluestreak cleaner wrasse (*Labroides dimidiatus*). *Bioscience Horizons*, **4**, 90-98.
- Huntingford F, Garcia Garcia de Leaniz C (1997) Social dominance, prior residence and the acquisition of profitable feeding sites in juvenile Atlantic salmon. *J. Fish Biol.*, **51**, 1009-1014.
- Hvas M, Folkedal O, Imsland A, Oppedal F (2018) Metabolic rates, swimming capabilities, thermal niche and stress response of the lumpfish, *Cyclopterus lumpus*. *Biology Open*, **7**, bio036079.
- Imsland AK, Frogg N, Stefansson SO, Reynolds P (2019a) Improving sea lice grazing of lumpfish (*Cyclopterus lumpus* L.) by feeding live feeds prior to transfer to Atlantic salmon (*Salmo salar* L.) net-pens. *Aquaculture*, **511**, 734224.
- Imsland AK, Reynolds P, Eliassen G, Arne T, Vigdisdatter A, Foss A, Vikingstad E, Anders T (2015a) Feeding preferences of lumpfish (*Cyclopterus lumpus* L.) maintained in open net-pens with Atlantic salmon (*Salmo salar* L.). *Aquaculture*, **436**, 47-51.

517 Imsland AK, Reynolds P, Eliassen G, Hangstad TA, Foss A, Vikingstad E, Elvegård
518 TA (2014) The use of lumpfish (*Cyclopterus lumpus* L.) to control sea lice
519 (*Lepeophtheirus salmonis* Krøyer) infestations in intensively farmed Atlantic
520 salmon (*Salmo salar* L.). *Aquaculture*, **424–425**, 18-23.

521 Imsland AK, Reynolds P, Eliassen G, Hangstad TA, Jónsdóttir ÓDB, Elvegård TA,
522 Lemmens SCA, Rydland R, Nytrø AV (2016a) Investigation of behavioural
523 interactions between lumpfish (*Cyclopterus lumpus*) and goldsinny wrasse
524 (*Ctenolabrus rupestris*) under controlled conditions. *Aquaculture international*,
525 **24**, 1509-1521.

526 Imsland AK, Reynolds P, Eliassen G, Hangstad TA, Nytrø AV, Foss A, Vikingstad E,
527 Elvegård TA (2015b) Assessment of suitable substrates for lumpfish in sea
528 pens. *Aquaculture International*, **23**, 639-645.

529 Imsland AK, Reynolds P, Eliassen G, Mortensen A, Hansen ØJ, Puvanendran V,
530 Hangstad TA, Jónsdóttir ÓDB, Emaus PA, Elvegård TA, Lemmens SCA,
531 Rydland R, Nytrø AV, Jonassen TM (2016b) Is cleaning behaviour in lumpfish
532 (*Cyclopterus lumpus*) parentally controlled? *Aquaculture*.

533 Imsland AK, Reynolds P, Lorentzen M, Eilertsen RA, Micallef G, Tvenning R (2020)
534 Improving survival and health of lumpfish (*Cyclopterus lumpus* L.) by the use
535 of feed blocks and operational welfare indicators (OWIs) in commercial
536 Atlantic salmon cages. *Aquaculture*, 735476.

537 Imsland AK, Reynolds P, Nytrø AV, Eliassen G, Hangstad TA, Jónsdóttir ÓDB,
538 Emaus P-A, Elvegård TA, Lemmens SCA, Rydland R, Jonassen TM (2016c)
539 Effects of lumpfish size on foraging behaviour and co-existence with sea lice
540 infected Atlantic salmon in sea cages. *Aquaculture*, **465**, 19-27.

541 Imsland AKD, Frogg N, Stefansson SO, Reynolds P (2019b) Improving sea lice
542 grazing of lumpfish (*Cyclopterus lumpus* L.) by feeding live feeds prior to
543 transfer to Atlantic salmon (*Salmo salar* L.) net-pens. *Aquaculture*, **511**,
544 734224.

545 Imsland AKD, Hanssen A, Nytrø AV, Reynolds P, Jonassen TM, Hangstad TA,
546 Elvegård TA, Urskog TC, Mikalsen B (2018) It works! Lumpfish can
547 significantly lower sea lice infestation in large-scale salmon farming. *Biology*
548 *Open*, **7**, bio036301.

549 Jensen P (2014) Behavior genetics and the domestication of animals. *Annu. Rev.*
550 *Anim. Biosci.*, **2**, 85-104.

551 Johannesen Á, Arge R, Eliassen K (2018) Rearing, farm application, and behaviour of
552 lumpfish (*Cyclopterus lumpus*) in the Faroes. In: *Cleaner Fish Biology and*
553 *Aquaculture Applications* (ed by Treasurer JW). 5M Publishing Ltd., Sheffield,
554 pp. 429-443.

555 Killen SS, Brown JA, Gamperl AK (2007a) The effect of prey density on foraging
556 mode selection in juvenile lumpfish: balancing food intake with the metabolic
557 cost of foraging. *Journal of Animal Ecology*, **76**, 814-825.

558 Killen SS, Costa I, Brown JA, Gamperl AK (2007b) Little left in the tank: metabolic
559 scaling in marine teleosts and its implications for aerobic scope. *Proc. R. Soc.*
560 *B*, **274**, 431-438.

561 Killen SS, Marras S, Ryan MR, Domenici P, McKenzie DJ (2012) A relationship
562 between metabolic rate and risk-taking behaviour is revealed during hypoxia
563 in juvenile European sea bass. *Functional Ecology* **26**, 134-143.

564 Koller M (2016) robustlmm: an R package for robust estimation of linear mixed-
565 effects models. *Journal of statistical software*, **75**, 1-24.

566 Lüdecke MD (2020) Package 'sjPlot' Data Visualization for Statistics in Social
567 Science.

568 Lugert V, Thaller G, Tetens J, Schulz C, Krieter J (2016) A review on fish growth
569 calculation: multiple functions in fish production and their specific application.
570 *Reviews in Aquaculture*, **8**, 30-42.

571 Lynch M, Walsh B (1998) *Genetics and analysis of quantitative traits*, Sinauer
572 Sunderland, MA.

573 Magnhagen C (2012) Personalities in a crowd: What shapes the behaviour of
574 Eurasian perch and other shoaling fishes? *Current Zoology*, **58**, 35-44.

575 McCann JT (1992) Criminal personality profiling in the investigation of violent crime:
576 Recent advances and future directions. *Behavioral Sciences & the Law*, **10**,
577 475-481.

578 Morado N, Mota PG, Soares MC (2019) The Rock Cook Wrasse *Centrolabrus*
579 *exoletus* Aims to Clean. *Frontiers in Ecology and Evolution*, **7**.

580 Nakagawa S, Schielzeth H (2010) Repeatability for Gaussian and non-Gaussian
581 data: a practical guide for biologists. *Biological Reviews*, **85**, 935--956.

582 Neal A, Yeo G, Koy A, Xiao T (2012) Predicting the form and direction of work role
583 performance from the Big 5 model of personality traits. *Journal of*
584 *Organizational Behavior*, **33**, 175-192.

585 Neumann C, Agil M, Widdig A, Engelhardt A (2013) Personality of wild male crested
586 macaques (*Macaca nigra*). *PLoS One*, **8**, e69383.

587 OneKind (2018) Cleaner Fish Welfare on Scotland's Salmon Farms. OneKind,
588 Edinburgh pp. 24.

589 Overton K, Barrett LT, Oppedal F, Kristiansen TS, Dempster T (2020) Sea lice
590 removal by cleaner fish in salmon aquaculture: a review of the evidence base.
591 *Aquaculture Environment Interactions*, **12**, 31-44.

592 Piersma T, Drent J (2003) Phenotypic flexibility and the evolution of organismal
593 design. *Trends in Ecology & Evolution*, **18**, 228-233.

594 Powell A, Pooley C, Scolamacchia M, Garcia de Leaniz C (2018a) Review of
595 lumpfish biology In: *Cleaner Fish Biology and Aquaculture Applications* (ed by
596 Treasurer JW). 5M Publishing Ltd., Sheffield, pp. 98-121.

597 Powell A, Treasurer JW, Pooley CL, Keay AJ, Lloyd R, Imsland AK, Garcia de
598 Leaniz C (2018b) Use of lumpfish for sea-lice control in salmon farming:
599 challenges and opportunities. *Reviews in Aquaculture*, **10**, 683–702.

600 Price EO (1999) Behavioral development in animals undergoing domestication.
601 *Applied Animal Behaviour Science*, **65**, 245-271.

602 R Core Team (2020) R: A language and environment for statistical computing.
603 Version 4.0.0 (2020-04-24) R Foundation for Statistical Computing, Vienna,
604 Austria.

605 Roberts LJ, Taylor J, Garcia de Leaniz C (2011) Environmental enrichment reduces
606 maladaptive risk-taking behavior in salmon reared for conservation. *Biological
607 Conservation*, **144** 1972–1979.

608 Roberts LJ, Taylor J, Gough PJ, Forman DW, Garcia de Leaniz C (2014) Silver
609 spoons in the rough: can environmental enrichment improve survival of
610 hatchery Atlantic salmon *Salmo salar* in the wild? *J Fish Biol*, **85**, 1972-1991.

611 Rodriguez-Barreto D, Rey O, Uren-Webster TM, Castaldo G, Consuegra S, Garcia
612 de Leaniz C (2019) Transcriptomic response to aquaculture intensification in
613 Nile tilapia. *Evolutionary Applications*, **12**, 1757–1771.

- Schuster AC, Carl T, Foerster K (2017) Repeatability and consistency of individual behaviour in juvenile and adult Eurasian harvest mice. *The Science of Nature*, **104**, 10.
- Staven FR, Nordeide JT, Imsland AK, Andersen P, Iversen NS, Kristensen T (2019) Is habituation measurable in lumpfish *Cyclopterus lumpus* when used as cleaner fish in Atlantic salmon *Salmo salar* Aquaculture? *Frontiers in Veterinary Science*, **6**.
- Stoffel MA, Nakagawa S, Schielzeth H (2017) rptR: Repeatability estimation and variance decomposition by generalized linear mixed-effects models. *Methods in Ecology and Evolution*, **8**, 1639--1644.
- Stranden AL (2020) Norwegian fish farmers reprimanded for poor treatment of cleaner fish. In: *sciencenorway.com*. forskning.no.
- Stringwell R, Lock A, Stutchbury CJ, Baggett E, Taylor J, Gough PJ, Garcia de Leaniz C (2014) Maladaptation and phenotypic mismatch in hatchery-reared Atlantic salmon *Salmo salar* released in the wild. *Journal of Fish Biology*, **85**, 1927–1945.
- Sutrisno R, Wisenden BD, Sailer CD, Radenic SJ (2011) Maternal inheritance and exploratory-boldness behavioural syndrome in zebrafish. *Behaviour*, **148**, 1443-1456.
- Treasurer J (2018a) Cleaner fish in aquaculture review and looking to the future In: *Cleaner Fish Biology and Aquaculture Applications* (ed by Treasurer JW). 5M Publishing Ltd., Sheffield, pp. 483-495.
- Treasurer J (2018b) An introduction to sea lice and the rise of cleaner fish In: *Cleaner Fish Biology and Aquaculture Applications* (ed by Treasurer JW). 5M Publishing Ltd., Sheffield, pp. 3-25.

- Van Dijk FE, Mostert J, Glennon J, Onnink M, Dammers J, Vasquez AA, Kan C, Verkes RJ, Hoogman M, Franke B (2017) Five factor model personality traits relate to adult attention-deficit/hyperactivity disorder but not to their distinct neurocognitive profiles. *Psychiatry Research*, **258**, 255-261.
- Vargas R, Mackenzie S, Rey S (2018) 'Love at first sight': the effect of personality and colouration patterns in the reproductive success of zebrafish (*Danio rerio*). *PLoS One*, **13**, e0203320.
- Whittaker BA, Consuegra S, Garcia de Leaniz C (2018) Genetic and phenotypic differentiation of lumpfish (*Cyclopterus lumpus*) across the North Atlantic: implications for conservation and aquaculture. *PeerJ*, **6**, e5974.
- Whittaker BA, Maeda S, Boulding EG (2021) Strike a pose: Does communication by a facultative cleaner fish, the cunner wrasse (*Tautoglabrus adspersus*), facilitate interaction with Atlantic salmon (*Salmo salar*)? *Applied Animal Behaviour Science*, **236**, 105275.
- Wickham H, Seidel D, RStudio (2020) Package 'scales' version 1.1.1.
- Wilson ADM, Krause J, Herbert-Read JE, Ward AJW (2014) The personality behind cheating: behavioural types and the feeding ecology of cleaner fish. *Ethology*, **120**, 904--912.
- Wismer S, Pinto AI, Vail AL, Grutter AS, Bshary R (2014) Variation in cleaner wrasse cooperation and cognition: influence of the developmental environment? *Ethology*, **120**, 519-531.

Table 1. Repeatability (R) of behaviours used to generate personality scores for lumpfish. Repeatability behaviours are highlighted in bold.

Personality component	Behaviour	R	SE	P
Activity	Crossing speed (cm/s)	0.651	0.097	<0.001
	Crossing frequency (No.)	0.278	0.127	0.018
	Swimming duration (s)	0.422	0.135	0.004
Sociality	Approaches to mirror (No.)	0.375	0.118	<0.001
	Time close to mirror (s)	0.000	0.080	1.000
Anxiety	Time in arena perimeter (s)	0.000	0.094	1.000
	Time in shelter (s)	0.177	0.135	0.124
Aggression	Charges at mirror (No.)	0.184	0.238	0.005
Boldness	Approaches to novel object (No.)	0.340	0.186	0.033
	Latency to novel object (s)	0.184	0.137	0.163
	Distance to novel object (cm)	0.226	0.139	0.092

Table 2. Correlation matrix between repeatable behaviours in lumpfish used to generate personality scores via Principal Component Analysis. Upper diagonal displays the Pearson's correlation coefficient and lower diagonal the associated probabilities. Significant correlations are highlighted in bold.

Personality component	Activity	Sociality	Aggression	Boldness
Activity (No. crosses/min)		+0.440	+0.210	-0.046
Sociality (No. mirror approaches/min)	0.006		+0.330	+0.098
Aggression (No. mirror charges/min)	0.210	0.044		-0.094
Boldness (No. novel object approaches/min)	0.780	0.560	0.580	

Figure 1. Experimental design showing the four experimental phases, each lasting 10 minutes to assess variation in lumpfish personalities. In the neutral phase (phase 1), a perimeter was superimposed over the video footage to assess time spent near the walls (thigmotaxis) in an open field test and three equal sections were marked to measure crossing frequency and swimming speed. In the shelter phase (phase 2), the time spent within 10 cm of a black panel was recorded. In the mirror phase (phase 3), the time and frequency of agonistic and non-agonistic approaches to the mirror were recorded. In the novel phase (phase 4), the latency, frequency of approaches within 10 cm and distance to the novel object were recorded.

Figure 2. Interactions observed between single lumpfish and 10 post-salmon smolts during 20-minute observation sessions ($n = 38$). Dotted line shows the mean number of interactions across all observations.

Figure 3. Relationship between significant lumpfish personality scores (PC1, PC2) derived from behavioural profiling and (A) time spent by lumpfish inspecting salmon, and (B) frequency of salmon flights in response to lumpfish approaches.

695 **Figure 1**

696

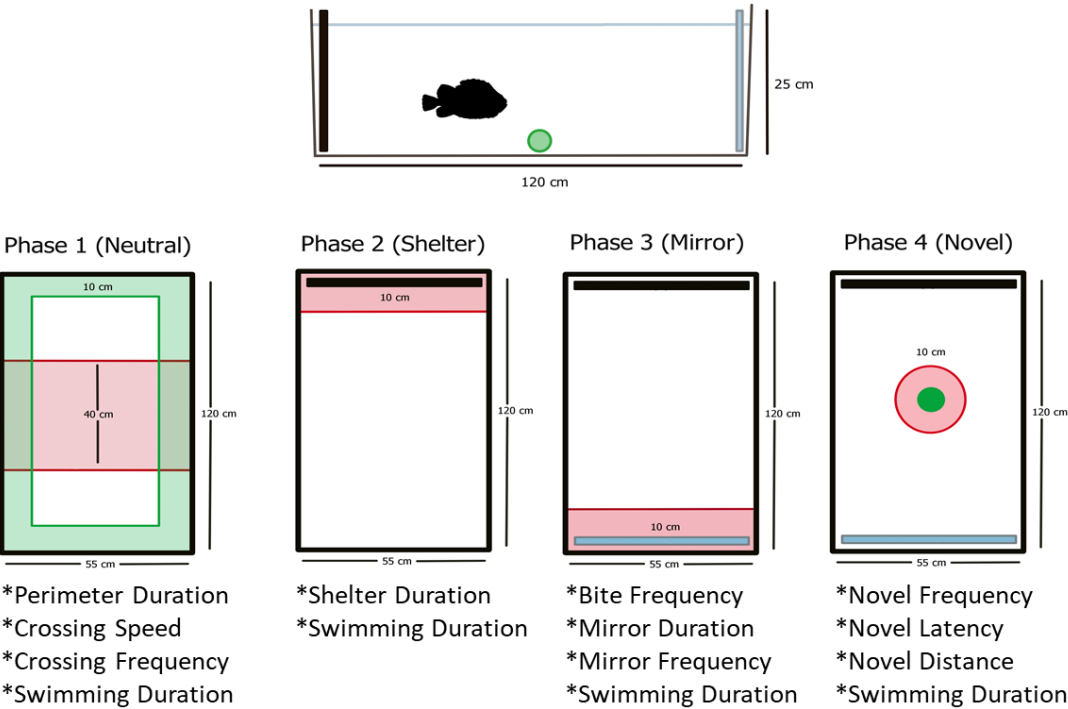


Figure 2

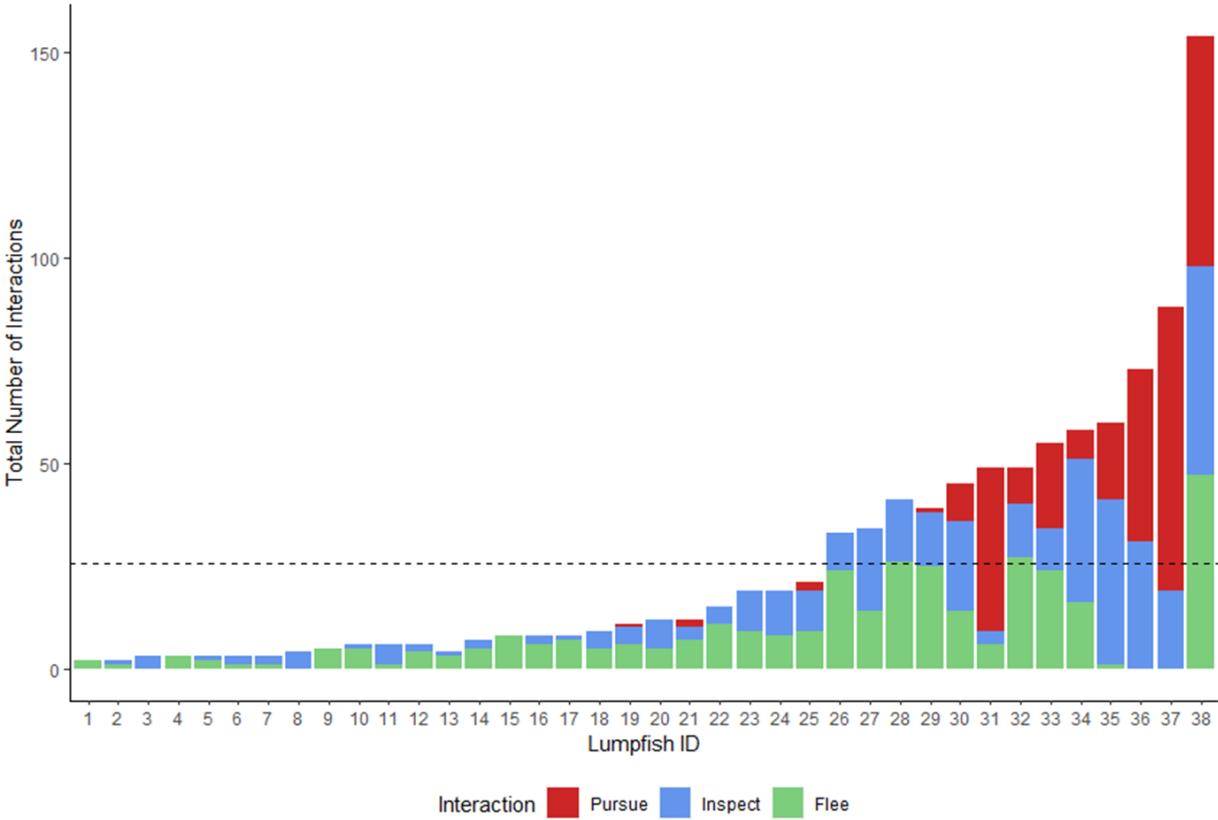
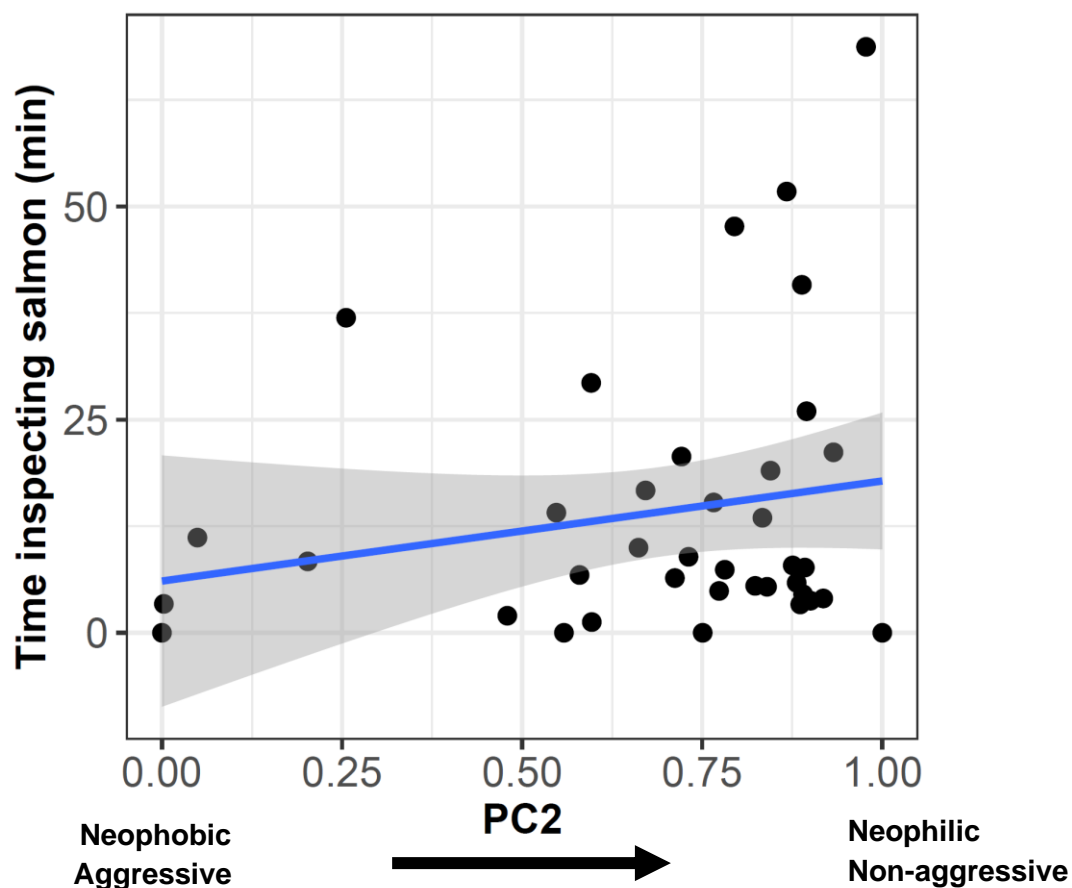


Figure 3

(A)



(B)

