

Hemodynamic molecular imaging of tumor-associated enzyme activity in the living brain

Mitul Desai¹, Jitendra Sharma², Adrian L. Slusarczyk¹, Ashley Chapin¹,
Agata Wiśniowska³, Robert Ohlendorf¹, Mriganka Sur² & Alan Jasanoff^{1,2,4†}

¹ Department of Biological Engineering, Massachusetts Institute of Technology, 77 Massachusetts Ave., Cambridge, MA 02139

² Department of Brain & Cognitive Sciences, Massachusetts Institute of Technology, 77 Massachusetts Ave., Cambridge, MA 02139

³ Harvard-MIT Health Sciences and Technology, Massachusetts Institute of Technology, 77 Massachusetts Ave., Cambridge, MA 02139

⁴ Department of Nuclear Science & Engineering, Massachusetts Institute of Technology, 77 Massachusetts Ave., Cambridge, MA 02139

† Correspondence: jasanoff@mit.edu

Submission date: 5/10/21

Abbreviations: Calcitonin Gene-Related Peptide (CGRP); Cerebrospinal Fluid (CSF); 50%-Effective Concentration (EC₅₀); Fibroblast Activating Protein (FAP); FAP-sensitive Vasoprobe (FAPVap); Gadolinium-Diethylenetriaminepentaacetic Acid (Gd-DTPA); Magnetic Resonance Imaging (MRI);

ABSTRACT

Molecular imaging could have great utility for detecting, classifying, and guiding treatment of brain disorders, but existing probes offer limited capability for assessing relevant physiological parameters. Here we describe a potent approach for noninvasive mapping of cancer-associated enzyme activity using a molecular sensor that acts on the vasculature, providing a diagnostic readout via local changes in hemodynamic image contrast. The sensor is targeted at the fibroblast activation protein (FAP), an extracellular dipeptidase and clinically relevant biomarker of brain tumor biology. Optimal FAP sensor variants were identified by screening a series of prototypes for responsiveness in a cell-based bioassay. The best variant was then applied for quantitative neuroimaging of FAP activity in rats, where it reveals nanomolar-scale FAP expression by xenografted tumor cells. The activated probe also induces robust hemodynamic contrast in nonhuman primate brain. This work thus demonstrates a translatable strategy for ultrasensitive functional imaging of molecular targets in neuromedicine.

INTRODUCTION

Detection of molecular epitopes is vital to effective classification of cancers and determination of therapeutic strategies (Olar and Aldape, 2014; Reifenberger et al., 2016; Wen and Reardon, 2016). In the brain, performing such diagnoses is particularly complicated by the difficulty of obtaining biopsy samples for *ex vivo* analysis. The development of sensitive *in vivo* assays for tumor-associated proteins is therefore an important goal in brain cancer research and treatment. Extracellular proteases have emerged as notable hallmarks of pernicious cancers such as gliomas (Cohen and Colman, 2015; Edwards et al., 2008). Several proteases are highly expressed on the surfaces of glioma cells and play key roles in infiltration of tumors into brain tissue (Mentlein et al., 2012).

These enzymes are thus attractive both as diagnostic markers and as targets for therapy (Vandooren et al., 2016; Verdoes and Verhelst, 2016). Because the profiles of protease expression differ among disease subtypes, detecting proteases on cancer cells *in situ* could be of critical importance in classifying and subsequently treating brain tumors.

Noninvasive measurement of tumor-associated protease activity inside the living brain is exceedingly challenging, but we recently introduced a family of ultrasensitive molecular probes with the potential to address this need (Desai et al., 2016). The probes are derived from peptides that induce vasodilation and consequent hemodynamic contrast detectable by many brain imaging modalities, most prominently including magnetic resonance imaging (MRI). Protease sensors can be engineered by fusing such peptides to protease-labile blocking domains; enzymatic cleavage of the blocking moieties activates the sensors, creating an imaging signal (**Figure 1A**). This principle was illustrated in proof-of-concept experiments that employed vasoactive probes (vasoprobos) based on the calcitonin gene related peptide (CGRP), a 37-residue molecule that induces dilation of intracerebral arterioles with a 50%-effective concentration (EC_{50}) below 10 nM (Chin et al., 1994; McCulloch et al., 1986)—approaching the low doses of radiotracers used in nuclear imaging. Importantly, CGRP is a potent endogenous vasodilator in humans, raising prospects that CGRP-based vasoprobos could be applied as non-immunogenic imaging agents in the clinic (Brain et al., 1985; Howden et al., 1988; Li et al., 2007; Warren et al., 1992).

In this work, we introduce a vasoprobe-based cancer imaging strategy that targets the fibroblast associated protein (FAP), an extracellular protease that is highly expressed in some glioblastomas (Busek et al., 2008), as well as tumorigenic stromal tissues (Pure and Blomberg, 2018). In tissue isolates from patients, FAP is most highly expressed in mesenchymal cells and in grade IV tumors, which demand therapeutic interventions distinct from other glioblastoma subtypes (Busek

et al., 2016). FAP expression levels also differ among established glioma cell lines (Busek et al., 2008), indicating the utility of FAP measurements as a basis for characterizing brain tumors. We show that vasoprobe enable wide-field molecular imaging of FAP activity using a contrast mechanism that is effective in rodent and primate brains, thus demonstrating a powerful avenue for *in situ* evaluation of neurological markers in living subjects.

RESULTS

Molecular engineering of a FAP-responsive vasoprobe

To identify FAP-sensitive vasoprobe, we began by creating a series of sterically inhibited CGRP derivatives that we predicted could undergo FAP-dependent activation. In light of previous evidence that N-terminal extension of CGRP sharply reduces receptor-binding activity (Desai et al., 2016), we formed the candidate sensors by adding biotinylated FAP-cleavable domains to the N-terminus of human α -CGRP sequence (**Figure 1B** and **Supplementary Table 1**). FAP-labile segments consisted of glycyl-proline consensus sites (Aertgeerts et al., 2005) flanked by polypeptide segments of varying length and composition. Each of these molecules was evaluated in a cell-based bioassay for CGRP receptor agonism (Desai et al., 2016) (**Figure 1C** and **Supplementary Figure 1**).

Prior to FAP digestion, the vasoprobe display EC_{50} values for receptor activation ranging from 6.7 to 21 nM, corresponding to reductions of 81- to 260-fold in potency with respect to unmodified CGRP (**Figure 1D**). Following treatment with FAP, the activity of each blocked vasoprobe is increased to levels approaching that of native CGRP, however. The greatest FAP-mediated change in CGRP receptor agonism is observed for construct (**5**), which contains two tandem cleavage sites and exhibits EC_{50} values of 6.7 ± 0.2 nM and 0.20 ± 0.01 nM before and

after FAP processing, respectively—a 34-fold increase in activity. We henceforth refer to this molecule simply as the FAP-sensitive vasoprobe (FAPVap).

FAPVap-based molecular imaging *in vivo*

To examine the ability of FAPVap to measure FAP expression on cancer cells in the living brain, we tested the probe on a xenograft model. HEK293 cell lines were generated by stable transfection with constructs encoding human FAP with the fluorescent marker mKate2 (test) or mKate2 only (control) and assessed for enzymatic activity in cell culture (**Supplementary Figure 2** and **Supplementary Table 2**). Measurements calibrated with known amounts of FAP indicated activity equivalent to 8.5 ± 4.6 nM soluble enzyme (mean \pm SD, $n = 3$), corresponding to an estimated mean of 8.5 pmol FAP per 10^6 test cells. Approximately 3×10^5 test or control cells were implanted at bilaterally symmetric sites in rat striatum and adapted to their environment over one day prior to imaging experiments (**Supplementary Figure 3**). To assess FAPVap activation by the cells after the adaptation period, 100 nM of the probe was perfused for ten minutes over each xenograft during continuous T_2 -weighted MRI scanning. Data indicate clear enhancement of imaging signal in the neighborhood of FAP-expressing but not control cells (**Figure 2A**), consistent with the expected difference between activated and inactivated FAPVap. MRI signal increases begin during FapVAP infusion and rise toward an asymptote reached ~ 10 minutes after infusion offset (**Figure 2B**). By the end of this trajectory, mean signal changes of $13.1 \pm 1.9\%$ and $0.7 \pm 1.5\%$ were observed in the presence of test and control xenografts, respectively, a significant difference (t -test $p = 0.007$, $n = 3$) that indicates that FAP-expressing cancer cells are selectively and robustly detected by the FAPVap sensor *in vivo* (**Figure 2C**).

To analyze MRI signal change dynamics in more mechanistic terms, we postulated a kinetic model that accounts for FAPVap infusion, enzymatic conversion of the probe to the CGRP-based product (CGRP*), consequent hemodynamic responses, and probe removal (**Figure 2D**). For the sake of simplicity, the model assumes that hemodynamic signal changes are directly proportional to the activated probe concentration and that enzymatic processing obeys first-order kinetics, as expected from published FAP kinetic constants (Edosada et al., 2006) relevant to FAPVap concentrations used in our experiments. Realistic parameter choices allow the model to approximate the observed time course of MRI signal change in **Figure 2B**, including the slow initiation of MRI responses and protracted increase in image signal that extends past the FAPVap infusion period (**Figure 2E**). This behavior is observed under conditions where the efflux rate is zero for both FAPVap and its CGRP* product. Variation of parameter choices alters the shape of the profile, however; for instance, modeling probe dynamics with tenfold greater FAP concentration or inclusion of a moderate FAPVap removal rate (0.01 s^{-1}) leads to a roughly linear increase in CGRP* concentration during infusion, followed by a flat asymptote.

Fitting of the resulting model to actual data enables estimation of the effective rate (k) of product formation from FAPVap (**Figure 2F**). Calculations assume a probe infusion rate of 0.11 nM/s, computed based on the infusion rate, FAPVap concentration, and region of interest (ROI) volume used in **Figure 2B,C**. The three time courses corresponding to **Figure 2C** were optimally approximated using k values ranging from 1.2×10^{-4} to $6.8 \times 10^{-4} \text{ s}^{-1}$, hemodynamic response coefficients of 0.5-1.0 %/nM, and rate constants for FAPVap and CGRP* removal all below 10^{-3} s^{-1} . Fitted curves do not emulate the dip in MRI signal observed for some traces during the FAPVap injection period, which we take to be an infusion-related artifact. Despite the assumptions involved,

these results establish the feasibility of model-based interpretation of vasoactive molecular imaging data in pseudo-quantitative terms.

Wide-field measurement of tumor-associated FAP activity

In a clinical context, unbiased detection of brain tumor markers should be performed using noninvasive delivery modes that do not require prior localization of or intracranial access to tumor sites. For imaging agents that are not known to permeate the blood-brain barrier, this can be accomplished using intrathecal infusion of probes into the cerebrospinal fluid (CSF). To emulate this scenario in the rat, we assessed the ability of FAPVap to report the location and activity of FAP-expressing cell implants following distal infusion of the probe into a CSF reservoir remote from xenograft locations in the brain (Ohlendorf et al., 2020). 100 nM of the probe was injected at a rate of 1 μ L/min into the subarachnoid space caudal to the olfactory bulb but rostral to test and control tumor cell implantation sites in dorsal cortex (**Figure 3A**). Application of this procedure to infusion of the T_1 -weighted MRI contrast agent gadolinium-diethylenetriamine pentaacetic acid (Gd-DTPA) results in broad signal enhancements across the rostral brain, showing that vasoprobes infused via this route should be able to access the xenografts (**Figure 3B**).

Hemodynamic molecular imaging of the entire rostral brain during remote intra-CSF infusion of FAPVap was performed using a more sensitive T_2^* -weighted MRI acquisition approach than the T_2 -weighted scheme of **Figure 2**. Results reveal the induction of signal changes in the neighborhood of the FAP-expressing cells but not control cells (**Figure 3C** and **Supplementary Figure 4**). Image signal observed near FAP xenografts began increasing upon onset of probe infusion, rose linearly during the injection period, and reached an asymptote at the end of the infusion period (**Figure 3D**), more closely paralleling the dotted or dashed model curves of **Figure 2E** than

the experimental data of **Figure 2B**. Immediately following infusion, mean MRI signal changes observed near FAP and control tumors were $5.2 \pm 1.1\%$ and $0.5 \pm 0.9\%$, respectively (**Figure 3E**), a significant difference (t -test $p = 0.015$, $n = 4$). The average spatial profile of hemodynamic responses around FAP-expressing xenografts was determined by coregistering xenograft sites from four independent experiments. Mean FAPVap-mediated responses are shown for test and control xenografts in **Figure 3F**, and indicate the presence of consistent responses across a roughly 1 mm diameter region around FAP-expressing tumors.

Probe responses within regions that underwent signal changes could be fit at a single-voxel level to the model of **Figure 2D**. Using a probe infusion rate of 0.011 nM/s estimated by assuming inverse-squared dependence on distance from the CSF infusion site, a hemodynamic amplitude of 20% per nM activated FAPVap produced an optimal fit to the data over the region analyzed. Across this region, signal changes within 95% of the individual voxels could be fit to the model with R^2 values over 0.9 (**Figure 3G**). FAP catalysis rates estimated using this approach fall in the range from 0 to 0.03 s^{-1} , with probe efflux rates averaging $\sim 0.4 \text{ s}^{-1}$, but CGRP* efflux rates below 10^{-3} s^{-1} . Consistency of FAPVap cleavage rates across animals is reflected by statistical significance (t -test $p \leq 0.05$, $n \geq 2$) of nonzero values in over 50% of voxels (**Figure 3H**). Discrepancies in these fitted parameters with respect to the results of **Figure 2E** may reflect a combination of differences in MRI acquisition protocol, probe delivery method, and xenografts themselves. The analysis presented here nevertheless describes a spatial profile of relative FAP-dependent cleavage rates and demonstrates that wide-field FAPVap-mediated tumor imaging enables quantitative estimation of cancer-associated enzymatic activity levels *in vivo*.

Vasoprobe imaging in nonhuman primates

Translational application of FAPVap and similar probes would require the vasoprobe-based contrast mechanism to operate robustly in human subjects. To investigate the likelihood of this possibility, we applied α -CGRP—which closely emulates enzyme-activated FAPVap—in a non-human primate, and evaluated its ability to induce vasodilation and hemodynamic MRI contrast. A squirrel monkey was implanted with a cranial window that permits probe perfusion over the exposed cortex during optical imaging (**Figure 4A** and **Supplementary Figure 5**). Introduction of 100 nM vasoprobe into the perfusion chamber induced a rapid decrease in cortical reflectance, as well as increases in the diameters of observable blood vessels (**Figure 4B**). These results are consistent with probe-mediated increases in capillary and arterial blood flow and align well with previously reported response characteristics in rodents (Desai et al., 2016).

To assess vasoprobe-mediated MRI contrast changes, test and control injections were performed into the cortical parenchyma during serial acquisition of T_2^* -weighted scans (**Figure 4C**). Infusion of 100 nM CGRP produced a regional signal increase of ~5% that was not observed following control infusion of artificial CSF or in reference brain regions that did not receive injections (**Figure 4D**). The results of this test therefore confirm that the FAPVap contrast mechanism operates in primates and indicate the potential suitability of this probe for applications to brain cancer diagnosis in people.

DISCUSSION

Our results reveal a strategy for functional molecular imaging of physiological processes in the mammalian brain. To detect tumor-associated protease activity, we introduce the FAP-responsive vasoprobe FAPVap, which undergoes a 34-fold increase in activity upon enzymatic

cleavage. Using this probe, we demonstrate both spatial localization and pseudo-quantitative characterization of FAP activity over wide fields of view in rodent brains. We also show that the vasoprobe-based contrast mechanism is effective in primates, illustrating the translational applicability of our technology. This study therefore establishes a clinically feasible avenue for brain cancer imaging and provides previously unreported readouts of disease-related enzymatic activity *in situ* (Soleimany and Bhatia, 2020).

The approach presented here exploits the high potency of vasoactive imaging agents and their consequent advantages for noninvasive detection of dilute molecular targets in live subjects (Desai et al., 2016; Ohlendorf et al., 2020). Notably, vasoprobe-like FAPVap are activatable and can be imaged at nanomolar concentrations, even though they do not contain radioactive or magnetic components. Previous efforts to map cancer-associated enzymes *in vivo* have employed radiotracers for nuclear imaging, superparamagnetic particles for T_2 -weighted MRI, paramagnetic contrast agents for T_1 -weighted MRI, and diamagnetic agents for heteronuclear or chemical exchange saturation transfer MRI (Brindle et al., 2017; Hingorani et al., 2015; Narunsky et al., 2014). Among these modalities, the radioactive and superparamagnetic species can both be detected with high sensitivity—at nanomolar or subnanomolar levels—but suffer from other limitations. Radiotracers in particular are not activatable, meaning that they give rise to background signal and must undergo pharmacokinetic partitioning in order to report enzyme activity (Holland et al., 2013). Superparamagnetic particles can undergo activation, but their large sizes inhibit delivery to tissue. Paramagnetic and diamagnetic MRI contrast agents are suitable for a number of elegant target-responsive molecular imaging strategies, but high concentrations of these probes are required for most applications (Wahsner et al., 2019); this complicates delivery, incurs potential toxicity, and limits prospects for detection of nanomolar-scale targets.

Because FAPVap is far more active as an imaging agent after proteolysis, the time courses of contrast induced by FAPVap provide information about FAP enzyme kinetics *in vivo*. We used this property to compute a map of FAP-catalyzed product formation rates. Our analysis was based on simplifying assumptions that might require refinement in future studies. For instance, assumptions about probe infusion and washout rates could be solidified by explicitly measuring probe concentration time courses using a CGRP derivative or similar peptide-based probe, perhaps using an alternative image contrast mechanism. The assumption of linearity of the hemodynamic contrast signal could be avoided by incorporating CGRP receptor activation characteristics into the data fitting procedure or by using an exogenous vasodilator like CO₂ to experimentally define the ceiling of hemodynamic contrast (Davis et al., 1998). Even without these steps, however, the measurements we report in **Figure 3** provide order-of-magnitude estimates that are stable over independent experiments and demonstrate that the tumor microenvironment permits both qualitative and quantitative vasoactive molecular imaging in the brain.

In translating FAPVap to larger animal models and eventually to humans, noninvasive brain-wide probe delivery strategies are highly desirable (Lelyveld et al., 2010). Here we used an intra-CSF infusion method that permits relatively low injected doses of the contrast agent to spread over wide fields of view inside the rat brain, but not the periphery. This mode of delivery is similar to clinically applied intrathecal injection methods (Capozza et al., 2021; Fowler et al., 2020), and with optimization would not require cranial surgery. In the future, even less invasive delivery routes could also be accessible, however, for instance by conjugating FAPVap to blood-brain barrier-permeating carrier proteins such as anti-transferrin receptor antibodies and then injecting the conjugates intravascularly (Pardridge, 2017). The low concentrations at which vasoprobes act are likely to make them especially amenable to such approaches. Vasoactive sensors like FAPVap

thus offer unique opportunities for spatially comprehensive functional evaluation of molecular targets in brain cancer and other neurological conditions.

MATERIALS AND METHODS

Peptide synthesis and conjugation

CGRP-like peptides were made by solid-state synthesis at the MIT Koch Institute Biopolymers lab, oxidatively cyclized, and purified by high performance liquid chromatography (HPLC). Identity and purity were confirmed by matrix-assisted laser desorption ionization-time of flight mass spectrometry and analytical HPLC. After lyophilization, the peptides were weighed, dissolved in water or 50% dimethylsulfoxide, and quantified rigorously using a fluorescent microplate assay (FluoroProfile, Sigma-Aldrich, St. Louis, MO) with CGRP from Sigma-Aldrich as a concentration standard. The peptide solutions were then adjusted to a stock concentration of 100 μ M in water and stored at -20 °C.

Proteolytic cleavage reactions

Recombinant human fibroblast activation protein alpha (FAP) expressed in Sf21 cells (400-600 ng/ μ L) was purchased from Sigma-Aldrich and used at the final concentrations indicated for each experiment. Reactions were performed by combining varying protease concentrations and the desired concentration of the sensor peptide conjugate (10x the highest desired final concentration in the bioassay) in reaction buffer (100 mM NaCl, 20 mM Tris-HCl, pH 7.5), and incubating the mixture at 37 °C for 2 h. These conditions permitted near-complete cleavage, as indicated by our assays. For cleavage reactions followed by serial dilution and CGRP bioassays, 1% 3-[(3-

cholamidopropyl)dimethylammonio]-1-propanesulfonate was included in the reaction buffer to reduce adsorptive loss of free peptides.

Mammalian cell culture

HEK293FT cells used in this study were purchased from Life Technologies (Grand Island, NY) and cultured in 90% DMEM medium, supplemented with 2 mM glutamine, 10% fetal bovine serum (FBS), 100 units/mL penicillin, and 100 μ g/mL streptomycin. Cells were frozen in freezing medium composed of 50% unsupplemented DMEM, 40% FBS, and 10% dimethylsulfoxide. The cells tested negative for mycoplasma contamination in the MycoAlert assay (Lonza, Walkersville, MD, USA). This cell line was chosen because of its extensive prior use and validation for lentivirus production (Campeau et al., 2009) and brain implantation (Nguyen et al., 2010). We performed no further authentication of the identity of the HEK293FT cell line because we obtained it from a trusted source and because functional validation of lentiviral gene transfer was satisfactory.

Luminescent cAMP assay for CGRP receptor activation

The GloSensor cAMP assay (Fan et al., 2008) (Promega) was used to measure cAMP generation upon CGRP receptor activation in real time. This assay system was incorporated into a HEK293FT-based cell line that also expresses both components of the heterodimeric CGRP receptor, forming a reporter cell line that has been described and characterized previously.

To perform assays, 10,000 cells/well were seeded on day 0 in 100 μ L DMEM + 10% FBS in white opaque clear-bottom 96-well plates (Costar #3610, Coppel, TX). On day 1 or 2, the medium was removed from the wells and replaced with 90 μ L/well of Gibco CO₂-independent medium (Life Technologies) + 10% FBS containing 1% v/v of cAMP GloSensor substrate stock solution

(Promega). The cells were incubated in substrate-containing medium at 37 °C in 5% CO₂ for at least 2 h (maximally 8 h). Prior to the luminescence bioassay, cells were removed from the cell culture incubator and equilibrated to room temperature and atmospheric CO₂ for 30 min. Then, a pre-addition read was performed for 10 min to establish a baseline for luminescence. Compounds and reaction products to be tested were quickly added in 10 µL volume per well at 10x of the desired final concentration using a multichannel pipet. A 30 min time-resolved readout of luminescence was then performed post-addition, with time points acquired every 60 or 90 s, and the time course was examined to confirm a plateau in the signal after 10-15 min, persisting at least through the 25 min time point.

All further data analysis was performed on the basis of the luminescence intensity at the 15 min post-addition time point. Dose–response curves were fitted to a four-parameter Hill equation using Prism (GraphPad Software, San Diego, CA). EC₅₀ values are reported as mean and standard deviation of triplicate measurements.

Plasmids

Lentiviral plasmids were cloned using the Golden Gate method by assembling fragments for the polycistronic expression cassettes into a variant of the pLentiX1 Zeo plasmid with its kanamycin resistance replaced by the ampicillin resistance cassette from pUC18. The lentiviral plasmid used to direct FAP expression in this study contains a gene of interest followed by an internal ribosome entry site (IRES) and a selection marker comprising a fluorescent protein, a 2A viral sequence (Szymczak et al., 2004), and an antibiotic resistance gene. The full sequence of this construct is reported as **Supplementary Table 2**. A control plasmid lacking the FAP and IRES components was also generated using otherwise equivalent sequences and cloning methods.

Lentivirus production and cell line generation

HEK293FT cells were seeded into 6-well plates at 1 million cells/well and transfected using Lipofectamine 2000 (Life Technologies, Grand Island, NY) according to instructions at sub-confluence. Co-transfection of 0.5 μ g pMD2.G, 1 μ g psPAX2, and 1 μ g of the lentiviral plasmid of interest was performed with 6.25 μ L Lipofectamine 2000 reagent. Virus-containing supernatant was collected after 48 and 72 hours, filtered through 0.45 μ m filters, and used for infection without further concentration. Supernatants were stored at 4 °C for up to a week.

HEK293FT cells were seeded into 24-well plates at 40,000 cells/well (final) in the presence of 4 μ g/mL polybrene in 50% fresh medium and 50% viral supernatants containing between one and three different viruses. The medium was replaced with fresh viral supernatants daily for two days. Selection was performed using both antibiotic resistance and fluorescent markers for each lentivirus. Beginning on day 3 after initial infection, blasticidin at 10 μ g/mL (Life Technologies) was added to the medium for selection and selection was continued until all cells expressed fluorescent markers. Selection was then discontinued, cells were expanded and aliquots were frozen down.

Preparation of xenograft cells

To prepare cells for implantation into rat brains, HEK293FT cells carrying the recombinant human FAP protein or control lentiviral expression cassettes were seeded at 50% confluence (7.5×10^6 cells per plate) in 10 cm cell culture plates and grown to confluence overnight. The next day, the cell layer was washed twice with fresh medium, aspirated, and scraped. The total volume was adjusted to 150 μ L with fresh growth medium for a density of 10^5 cells/ μ L and pipetted up and

down to break up clumps until a homogenous cell suspension was obtained. Dispersion and integrity of cells was confirmed by brightfield microscopy.

Animal procedures

All animal procedures were conducted in accordance with National Institutes of Health guidelines and with the approval of the MIT Committee on Animal Care. Rodent experiments were performed with male Sprague-Dawley rats, aged 10-12 weeks, supplied by Charles River Laboratories (Wilmington, MA). Nonhuman primate studies were performed with a single adult female squirrel monkey (*Saimiri sciureus*) obtained from the primate colony at MIT.

Preparation of rats for imaging

Seven Sprague-Dawley rats underwent surgery under isoflurane anesthesia, and bilateral cannula guides (22 gauge, Plastics One, Roanoke, VA) were implanted. For the experiments of **Figure 2** ($n = 3$), the guides were located over the dorsal striatum, 3 mm lateral to midline, 0.5 mm anterior to bregma, and at a depth of 5 mm from the cortical surface; for the experiments of **Figure 3**, guides were positioned over motor cortex, 2 mm lateral to midline, 3.2 mm anterior to bregma, and at a depth of 1 mm from the cortical surface. For wide-field probe delivery in the experiments of **Figure 3**, an additional cannula guide was implanted on the midline, 5.2 mm anterior to bregma, at a depth of 0.5 mm below the cortical surface. A head post for positioning animals during imaging was attached to each rat's skull using dental cement (C&B Metabond, Parkell, Inc., Edgewood, NY) during the cannula implantation surgery. Cannula guides were sealed with dummy cannulae to avoid exposure of brain tissue during the recovery period. Further experiments were performed after three or more days of post-operative care.

One day before imaging experiments, human FAP-expressing and control HEK293FT cells were xenografted bilaterally through the implanted bilateral cannula guides. Two metal injection cannulae (28 gauge, Plastics One, Roanoke, VA) were attached to 25 μ L Hamilton glass syringes and prefilled with the appropriate cell suspensions. Injection cannulae were then lowered into the previously implanted cannula guides. The Hamilton syringes were then placed in a remote infuse/withdraw dual syringe pump (PHD 22/2000; Harvard Apparatus, Holliston, MA) and 3 μ L of cell suspension (~0.3 million cells) was injected over 30 minutes at a rate of 0.1 μ L/min. After the cell injection was completed, the metal cannulae were removed and the cannula guides were again sealed with dummy cannulae.

Magnetic resonance imaging in rats

Animals were scanned by MRI to measure the changes in hemodynamic contrast following injection of FAPVap probe. Data were acquired on a 7 T scanner with a 20 cm horizontal bore (Bruker Instruments, Ettlingen, Germany). Home-built and commercial (Insight Neuroimaging Systems, Worcester, MA and Doty Scientific, Columbia, SC) radiofrequency (RF) coils designed for rat brain imaging were used for excitation and detection. During imaging experiments, animals were anesthetized with isoflurane (3% in oxygen for induction; 1% for maintenance). Breathing rate and end-tidal expired isoflurane were continuously monitored. Anesthetized animals were attached via their head posts to a head holder designed to fit within the RF coil systems. Animals with their RF coils were inserted into the magnet bore and locked in a position such that the head of the animal was at the center of the magnet bore.

High resolution T_2 -weighted anatomical scans of each animal were obtained using a rapid acquisition with relaxation enhancement (RARE) pulse sequence with effective echo time (TE) =

30 ms, repetition time (TR) = 5000 ms, RARE factor = 8, matrix size = 256 x 256, 7 coronal slices, and resolution 98 μm x 98 μm x 1 mm (**Figure 2**) or 78 μm x 78 μm x 1 mm (**Figure 3**). Hemodynamic contrast scan series for the experiments of **Figure 2** were obtained also using a RARE pulse sequence with frame time of 5 s, effective TE = 40 ms, TR = 1000 ms, RARE factor = 8, matrix size = 100 x 100, 7 coronal slices, and resolution = 250 μm x 250 μm x 1 mm. Functional imaging scans for **Figure 3** were obtained using gradient echo planar imaging with TE = 10 ms, recycle time TR = 4000 ms, matrix size = 64 x 64, 7 coronal slices, and resolution = 390 μm x 390 μm x 1 mm. For each experiment, five minutes of baseline measurements were acquired prior to probe infusion. Following this baseline period, while continuously collecting MRI scans, infusion pumps were remotely turned on to commence infusion of 100 nM FAPVap formulated in artificial cerebrospinal fluid (aCSF) through the bilateral cannulae (injection rate = 0.1 $\mu\text{L}/\text{min}$, **Figure 2** experiments) or midline cannula (injection rate = 1 $\mu\text{L}/\text{min}$, **Figure 3** experiments). Infusion proceeded for 10 minutes and was followed by further image acquisition.

T_1 -weighted contrast agent injections in rats

To assess probe spreading from the intra-CSF infusion procedure described above, two additional rats were implanted with midline cannulae and T_1 -weighted image series were acquired during injection of gadolinium diethylenetriaminepentaacetic acid (Gd-DTPA, Sigma-Aldrich). Each animal was prepared for imaging as described above, except that the intra-CSF infusion syringe was filled instead with 200 mM Gd-DTPA formulated in aCSF. After insertion of animals into the scanner and acquisition of anatomical scans, T_1 -weighted scans suitable for visualizing Gd-DTPA effects were performed using a fast low-angle shot (FLASH) pulse sequence with TE = 5 ms, TR = 93.8 ms, matrix size = 64 x 64, 7 sagittal slices, and spatial resolution = 400 μm x 400

$\mu\text{m} \times 1 \text{ mm}$. Scans were collected over a ten minute baseline period followed by 30 minutes of contrast agent infusion at a rate of $1 \mu\text{L}/\text{min}$. The resulting data were processed and displayed using MATLAB. Percent signal change values after the injection period were computed with respect to the pre-injection baseline in $1 \text{ mm} \times 1 \text{ mm}$ ROIs indicated in **Figure 3b**.

Analysis of MRI data from rats

MRI data from rats were preprocessed using the AFNI software package (Cox, 1996). AFNI routines were applied for motion correction and voxel-wise normalization. Data of **Figure 2** were further subjected to spatial smoothing with a kernel width of 1 mm , and the EPI data of **Figure 3** were aligned to corresponding anatomical scans using the AFNI 3dAllineate function. Additional processing and analysis were performed in MATLAB (Mathworks, Natick, MA). Data were temporally smoothed over a window of 60 s , mean brain signal fluctuations were normalized out, baseline signal averaged over 60 s prior to injection was subtracted from each image series, and signal changes at or outside the edge of the brain were masked out. Resulting data indicated percent signal change with respect to baseline for each brain voxel. These were used to compute maps of changes observed after the FAPVap infusion period (**Figure 2A**, **Figure 3C**, **Supplementary Figure 1**), as well as mean time courses in approximately $1.2 \text{ mm} \times 1.2 \text{ mm}$ regions of interest (ROIs) placed below the cannula tip locations in each animal. ROI-averaged signal change amplitudes observed at select time points were also calculated. Statistical calculations including t -test comparisons between test and baseline or control conditions and Z -score calculations were also implemented in MATLAB.

Kinetic modeling and model fitting

A kinetic model of FAPVap processing is diagrammed in **Figure 2D**. This model was used to simulate the concentrations of the vasoprobe (V) and of its FAP-activated product CGRP* (C) over time in a voxel or ROI, based on two differential equations:

$$\frac{dV}{dt} = v_{in} - (k + v_{out})V \quad (1)$$

$$\frac{dC}{dt} = kV - c_{out}C \quad (2)$$

where k is the FAP-dependent rate of conversion from V to C , v_{in} refers to the zeroth-order rate of introduction of the probe, v_{out} refers to the rate of probe efflux, and c_{out} refers to the rate of CGRP* efflux. For the computed time courses of **Figure 2E**, v_{in} was nonzero only during the indicated infusion period, during which it was set to 0.1 $\mu\text{L}/\text{min}$ divided by an ROI volume of 1.56 μL (*i.e.* 0.064 ROI volumes/min), times the concentration of injected agent, 100 nM, resulting in $v_{in} = 0.107$ nM/s. The first-order outflow rate v_{out} was modeled as a fixed rate of 0 s^{-1} or 0.01 s^{-1} . The FAPVap cleavage rate was estimated as $k_{cat}[\text{FAP}]/K_m$, using literature-based values (Edosada et al., 2006) of $k_{cat} = 3$ s^{-1} and $K_m = 2$ μM for peptide substrates and a FAP concentration of 1 nM or 10 nM, resulting in cleavage rates of $k = 0.0015$ nM/s or 0.015 nM/s.

For the model-based MRI data analysis of **Figure 2F** and **Figure 3G**, nonlinear least-squares fitting was used to optimize agreement between observed MRI signal S and modeled signal $\hat{S} = AC(t)$, where A is a constant of proportionality relating the CGRP* concentration to MRI signal change. For the ROI-level fitting of **Figure 2F**, v_{in} was set to 0.107 nM/s, reflecting the ROI volume and infusion rate used in the corresponding experimental analysis. For the voxel-level fitting of **Figure 3G**, v_{in} was crudely estimated by assuming spherically symmetric spread of the agent from the infusion site with constant flux vs. distance, such that

$$v_{in} = \frac{r_{in}[\text{FAPVap}]_{in}VCS}{4\pi d^2VV} \quad (3)$$

where r_{in} is the infusion rate (1 $\mu\text{L}/\text{min}$), $[\text{FAPVap}]_{in}$ is the injected probe concentration (100 nM), VCS is the voxel cross-section (0.15 mm^2), d is the distance from the injection site (~ 3.5 mm), and VV is the voxel volume (0.15 μL), leading to a v_{in} value of 0.0108 nM/s.

For the analysis of **Figure 3G**, the ratio of MRI signal to [CGRP*] represented by the scaling factor A was assumed to be fixed across the entire field of view. A was optimized to a value of 20 %/nM using a coarse grid-search over values from 0 to 40 %/nM, though fits of roughly similar quality could be obtained over a range of A values. Here, values of k , v_{out} , and c_{out} were optimized separately for each voxel and the fitting error was computed from all voxels at once. FAP cleavage rates presented in **Figure 3H** reflect fitting to mean data from four animals. Standard errors were computed using jackknife resampling over the four datasets, with individual voxel data points excluded from the SEM calculation when poor fits were achieved ($R^2 < 0.9$) or unphysical enzymatic rates ($k > 10 \text{ s}^{-1}$) were observed. These mean and standard error values were used to perform t -tests and voxels with $p \leq 0.05$ ($n \geq 2$) are identified in the figure. All kinetic modeling and model-fitting was performed using MATLAB.

Postmortem histology

After MRI experiments, some rats were transcardially perfused with phosphate buffered saline (PBS) followed by 4% formaldehyde in PBS. Brains were extracted, post-fixed overnight at 4 °C, and then cryoprotected in 30% sucrose for 24-48 h before sectioning. Free-floating sections (50 μm) were cut using a vibratome (Leica VT1200 S, Leica Microsystems GmbH, Wetzlar, Germany), mounted on glass slides with VECTASHIELD mounting medium with DAPI (Vector Laboratories, Burlingame, CA) and protected with a coverslip. The distribution of injected

HEK293FT cells was indicated by red fluorescence due to mKate2 reporter expression in both FAP-expressing and control cells.

Preparation of squirrel monkey for optical imaging

Squirrel monkeys were pair-housed in an environment controlled for temperature (20-23 °C), humidity (30-70%), and photoperiod (12 h dark/12 h light). Their cages were equipped with a variety of perches and enrichment devices and they received regular health checks and behavioral assessment from attending veterinarians and researchers.

For *in vivo* optical imaging during application of vasoprobe agents, a resealable chamber with an optically clear glass window and ports for drug application was custom designed and 3D printed (**Supplementary Figure 5**). The circular polycarbonate chamber had a central opening of 5 mm diameter over which a clear glass coverslip (Werner Instruments, Holliston, MA) was placed for optical imaging. Two pairs of silicone O-rings sandwiched the glass coverslip and a finely threaded polycarbonate O-ring was used to tighten the assembly and prevent any leakage. The chamber was equipped with an inlet and an outlet port, at opposite ends, for controlled fluid circulation at specified rate via a syringe infusion pump.

In preparation for the procedure to surgically implant the optical imaging chamber, a single monkey was placed on food restriction overnight. On the day of the surgery, the animal was pre-medicated with atropine (0.04 mg/kg) and sedated with ketamine (30 mg/kg), both given intramuscularly. Following intubation, anesthesia was induced with 3% sevoflurane and later maintained at 1.5% sevoflurane mixed with O₂. Sensors and electrodes for continuous recording of heart rate, oxygen saturation, electrocardiograms, end-tidal CO₂, and rectal temperature were attached and intravenous (IV) catheter was placed in the saphenous vein for infusion of fluids and

drugs during the surgery and recovery period. Once the animal acquired a stable plane of anesthesia, it was placed in a stereotaxic apparatus. A thin layer of sterile eye lubricant was applied to protect against corneal drying. A single bolus dose of intravenous dexamethasone (0.4 mg/kg) was provided to guard against brain swelling. The scalp and fascia were removed in layers via blunt dissection to expose the implant site and craniotomy was performed with a diameter large enough to tightly fit the lower pedestal of the optical chamber, which was then cemented to the skull with C&B Metabond. A small cap covering the optical chamber was held in place with 4 skull screws custom designed in-house from MRI compatible, medical grade PEEK. The fascia and scalp were then sutured around the implant.

After surgery, the animal was provided with anti-inflammatory pain relief medications and antibiotics as prescribed by the attending veterinary staff. The animal was then allowed to recover and extubated once fully conscious. This process took place in a recovery cage until the monkey was able to move and sit unaided; it was then returned to its home cage. The animal was closely monitored for the next several hours and then several times daily over the next 72 hours.

Squirrel monkey optical imaging and analysis

After a period of three weeks, allowing for full recovery from cephalic implant procedure, optical imaging experiments began. Following standard food restriction and premedication protocols, the animal was intubated and anesthetized with 3% sevoflurane and placed in a stereotaxic frame. In preparation for imaging, the area around the optical chamber was cleaned and disinfected with betadine and alcohol scrubs and a Steri-Drape (3M, St. Paul, MN) with an opening to expose the imaging chamber was placed over the monkey's head. The optical chamber cover was removed

and the area was flushed with sterile pre-warmed saline to remove any tissue and debris. The optical window was replaced by fresh sterile glass coverslip and sealed tightly after carefully removing any air bubbles. The inlet and outlet ports were then used for drug application and irrigation with sterile aCSF.

A charge-coupled device camera (Prosilica GC, Allied Vision, Newburyport, MA) attached to a dissection microscope (Stemi SV11 M2 Bio, Carl Zeiss AG, Oberkochen, Germany) was used to image the cortical surface at a frame rate of approximately 4 Hz. Illumination was regulated using a xenon arc lamp. A green band-pass filter (550 ± 25 nm) was used to provide optimal vascular contrast. A 100 nM CGRP (human α -CGRP, Sigma-Aldrich, St. Louis, MO) solution was prepared in aCSF. To establish imaging baselines, aCSF alone was continuously infused (30 μ L/min) through the inlet port for five minutes prior to CGRP infusion; images were acquired continuously throughout. Fluid was extracted from the imaging chamber through the outlet port at an equal rate, in order to maintain a constant pressure. At the end of the baseline period, the CGRP solution was infused at a rate of 30 μ L/min.

Data were temporally down-sampled to 1 Hz and processed further in MATLAB. Because of a fluid level artifact upon fluid switching, image signal changes were analyzed starting at CGRP infusion onset (defined as $t = 0$). This included measurement of vessel diameter by examining the full width at half-height of the vessel transected by the red line in **Figure 4A**, as well as measurement of cortical reflectance from the parenchymal region identified by the black box in this figure panel. Values are expressed as percent change from their $t = 0$ values.

Preparation of squirrel monkey for MRI

In preparation for MRI experiments, the same monkey used for optical imaging was transferred to a custom-built anesthesia induction box. Anesthesia was induced with sevoflurane (4% in O₂) for ~5 minutes. After the animal was immobile, suppression of reflexes was verified, and it was taken out of the chamber and intubated using a silicone-cuffed 2.5 mm-inner diameter endotracheal tube (ET) without wire reinforcement (Med-Caire, Vernon, CT). The tube was fitted to span the distance from the mouth to the manubrium sternum. Prior to intubation, a single spray of the topical anesthetic Cetacaine (Cetylite Industries, Pennsauken, NJ) was delivered to the glottis, to reduce the incidence of laryngospasm. The ET was coated with lidocaine hydrochloride oral topical solution and inserted into the trachea using a stylet and laryngoscope (size 1 Macintosh blade). Successful ET placement was determined by observing motion of hairs held at the opening of the ET connector, condensation on a mirror, and expansion/contraction of a latex covering placed at the end of the ET connector. The cuff on the ET was then inflated with air. The ET was secured with a velcro strap customized with a 15 mm opening that fit around the ET connector and wrapped around the head.

Anesthesia was reduced to 2.5% sevoflurane and an IV catheter was placed in the saphenous vein. The catheter was a 24G x 3/4-inch Surflo model with a 27G needle and Surflo injection plug (Terumo Medical Corp., Somerset, NJ). The IV line was then used to deliver lactated Ringer's solution (7.5 ml/kg/hr). A one-time dose of anticholinergic glycopyrrolate (0.004 mg/kg IM) was provided at the same time. The animal was placed on mechanical ventilation (SAR-830 Series Small Animal Ventilator, CWE, Inc.) and anesthesia was further reduced to 2% sevoflurane in oxygen (0.5-0.6 L O₂/minute), while the animal was positioned in a custom cradle incorporating ear bars and head restraint.

In preparation for infusion of vasoprobe and control solutions during MRI, the previously implanted chamber for optical imaging was gently opened by removing the glass cover slip. A 22G Teflon cannula was inserted in the cortex in the radial direction to a depth of 6 mm below cortical surface. The cannula was connected to the infusion pump via polyvinyl tubing (3 mm internal diameter). A similar cannula was placed in a different location, 5 mm away and at a depth of 10 mm, for infusion of aCSF control solution via a small craniotomy. Sevoflurane was then reduced in three incremental steps over 30 minutes to achieve 0.6% (in balance of oxygen) expired sevoflurane level, measured with a SurgiVet V9004 Capnograph (Smiths Medical, St. Paul, MN). Ventilation was maintained at a rate between 34–39 breaths per minute with an inspiration time of 0.5 s and expiration duration of 1.1 s. Breathing rate and end-tidal anesthetic were continuously monitored throughout subsequent imaging, and animal core temperature was maintained at approximately 37 °C using a heating blanket. Following MRI experiments, a 3 mL injection of 5% dextrose was delivered after the animal was removed from the scanner.

Squirrel monkey MRI acquisition and analysis

MRI of the squirrel monkey was performed using a Bruker Biospec 9.4 T scanner with 20 cm bore, equipped with a custom-built surface transceiver coil. A high resolution T_2 -weighted anatomical scan was obtained using a rapid acquisition with relaxation enhancement (RARE) pulse sequence with effective $TE = 35.5$ ms, $TR = 2500$ ms, RARE factor = 8, spatial resolution = $156 \mu\text{m} \times 156 \mu\text{m} \times 1$ mm, and matrix size = 256×256 with 10 coronal slices around the injection site. Hemodynamic contrast image series were acquired using a gradient echo planar imaging (EPI) pulse sequence with $TE = 14$ ms, $TR = 8000$ ms, spatial resolution = $400 \mu\text{m} \times 400 \mu\text{m} \times 1$ mm, and matrix size = 100×100 with 10 slices. Five minutes of baseline measurements were acquired

prior to probe infusion. Following this baseline period, while continuously collecting EPI images, infusion pumps were remotely turned on to commence intracranial injection of 100 nM CGRP or control aCSF solutions at a rate of 0.1 μ L/min for 10 minutes through the preimplanted cannulae.

Functional imaging data were motion corrected in AFNI and imported into MATLAB for further analysis. Each voxel's image intensity was temporally smoothed using a running window of 40 time points, normalized to the preinfusion baseline, and converted to units of percent signal change. A map of percent signal change in brain voxels was computed for the 20-minute time point and superimposed over the anatomical scan. 1.6 mm x 1.6 mm ROIs were specified at the cannula tips used for CGRP and aCSF injections and also at two arbitrarily placed control locations in the same brain slice. Mean percent signal change amplitudes in each ROI were plotted versus time.

ACKNOWLEDGEMENTS

This research was supported by NIH grants R24 MH109081 and U01 NS103470 and by grants from the MIT Simons Center for the Social Brain and the G. Harold and Leila Y. Mathers Foundation to A.J. A.L.S. was supported by predoctoral fellowships from the Boehringer-Ingelheim Fonds and the Friends of the McGovern Institute. A.C. was supported by the SCSB undergraduate research opportunities program. R.O. was funded by a fellowship from the Deutsche Forschungsgemeinschaft. A.W. was funded by the Advanced Multimodal Neuroimaging Training Program at the Massachusetts General Hospital (R90 DA023427) and a fellowship from Harvard-MIT Health Sciences and Technology program.

COMPETING INTERESTS

The authors declare no competing interests.

REFERENCES

- Aertgeerts, K., Levin, I., Shi, L., Snell, G.P., Jennings, A., Prasad, G.S., Zhang, Y., Kraus, M.L., Salakian, S., Sridhar, V., *et al.* 2005. Structural and kinetic analysis of the substrate specificity of human fibroblast activation protein alpha. *J Biol Chem* **280**:19441-19444.
- Brain, S.D., Williams, T.J., Tippins, J.R., Morris, H.R., and MacIntyre, I. 1985. Calcitonin gene-related peptide is a potent vasodilator. *Nature* **313**:54-56.
- Brindle, K.M., Izquierdo-Garcia, J.L., Lewis, D.Y., Mair, R.J., and Wright, A.J. 2017. Brain Tumor Imaging. *J Clin Oncol* **35**:2432-2438.
- Busek, P., Balaziova, E., Matrasova, I., Hilser, M., Tomas, R., Syrucek, M., Zemanova, Z., Krepela, E., Belacek, J., and Sedo, A. 2016. Fibroblast activation protein alpha is expressed by transformed and stromal cells and is associated with mesenchymal features in glioblastoma. *Tumour Biol* **37**:13961-13971.
- Busek, P., Stremenova, J., and Sedo, A. 2008. Dipeptidyl peptidase-IV enzymatic activity bearing molecules in human brain tumors--good or evil? *Front Biosci* **13**:2319-2326.
- Campeau, E., Ruhl, V.E., Rodier, F., Smith, C.L., Rahmberg, B.L., Fuss, J.O., Campisi, J., Yaswen, P., Cooper, P.K., and Kaufman, P.D. 2009. A versatile viral system for expression and depletion of proteins in mammalian cells. *PloS One* **4**:e6529.
- Capozza, M.A., Triarico, S., Mastrangelo, S., Attina, G., Maurizi, P., and Ruggiero, A. 2021. Narrative review of intrathecal drug delivery (IDD): indications, devices and potential complications. *Ann Transl Med* **9**:186.
- Chin, S.Y., Hall, J.M., Brain, S.D., and Morton, I.K. 1994. Vasodilator responses to calcitonin gene-related peptide (CGRP) and amylin in the rat isolated perfused kidney are mediated via CGRP1 receptors. *The Journal of pharmacology and experimental therapeutics* **269**:989-992.

- Cohen, A.L., and Colman, H. 2015. Glioma biology and molecular markers. *Cancer Treat Res* **163**:15-30.
- Cox, R.W. 1996. AFNI: software for analysis and visualization of functional magnetic resonance neuroimages. *Comput Biomed Res* **29**:162-173.
- Davis, T.L., Kwong, K.K., Weisskoff, R.M., and Rosen, B.R. 1998. Calibrated functional MRI: mapping the dynamics of oxidative metabolism. *Proc Natl Acad Sci U S A* **95**:1834-1839.
- Desai, M., Slusarczyk, A.L., Chapin, A., Barch, M., and Jasanoff, A. 2016. Molecular imaging with engineered physiology. *Nat Commun* **7**:13607.
- Edosada, C.Y., Quan, C., Tran, T., Pham, V., Wiesmann, C., Fairbrother, W., and Wolf, B.B. 2006. Peptide substrate profiling defines fibroblast activation protein as an endopeptidase of strict Gly(2)-Pro(1)-cleaving specificity. *FEBS Lett* **580**:1581-1586.
- Edwards, D., Høyer-Hansen, G., Blasi, F., and Sloane, B.F., eds. (2008). *The Cancer Degradome: Proteases and Cancer Biology* (New York: Springer).
- Fan, F., Binkowski, B.F., Butler, B.L., Stecha, P.F., Lewis, M.K., and Wood, K.V. 2008. Novel genetically encoded biosensors using firefly luciferase. *ACS Chem Biol* **3**:346-351.
- Fowler, M.J., Cotter, J.D., Knight, B.E., Sevick-Muraca, E.M., Sandberg, D.I., and Sirianni, R.W. 2020. Intrathecal drug delivery in the era of nanomedicine. *Adv Drug Deliv Rev* **165-166**:77-95.
- Hingorani, D.V., Bernstein, A.S., and Pagel, M.D. 2015. A review of responsive MRI contrast agents: 2005-2014. *Contrast Media Mol Imaging* **10**:245-265.
- Holland, J.P., Cumming, P., and Vasdev, N. 2013. PET radiopharmaceuticals for probing enzymes in the brain. *Am J Nucl Med Mol Imaging* **3**:194-216.

- Howden, C.W., Logue, C., Gavin, K., Collie, L., and Rubin, P.C. 1988. Haemodynamic effects of intravenous human calcitonin-gene-related peptide in man. *Clin Sci (Lond)* **74**:413-418.
- Lelyveld, V.S., Atanasijevic, T., and Jasanoff, A. 2010. Challenges for Molecular Neuroimaging with MRI. *Int J Imaging Syst Technol* **20**:71-79.
- Li, M., Maderdrut, J.L., Lertora, J.J., and Batuman, V. 2007. Intravenous infusion of pituitary adenylate cyclase-activating polypeptide (PACAP) in a patient with multiple myeloma and myeloma kidney: a case study. *Peptides* **28**:1891-1895.
- McCulloch, J., Uddman, R., Kingman, T.A., and Edvinsson, L. 1986. Calcitonin gene-related peptide: functional role in cerebrovascular regulation. *Proc Natl Acad Sci U S A* **83**:5731-5735.
- Mentlein, R., Hattermann, K., and Held-Feindt, J. 2012. Lost in disruption: role of proteases in glioma invasion and progression. *Biochim Biophys Acta* **1825**:178-185.
- Narunsky, L., Oren, R., Bochner, F., and Neeman, M. 2014. Imaging aspects of the tumor stroma with therapeutic implications. *Pharmacol Ther* **141**:192-208.
- Nguyen, Q.T., Schroeder, L.F., Mank, M., Muller, A., Taylor, P., Griesbeck, O., and Kleinfeld, D. 2010. An in vivo biosensor for neurotransmitter release and in situ receptor activity. *Nat Neurosci* **13**:127-132.
- Ohlendorf, R., Wisniowska, A., Desai, M., Barandov, A., Slusarczyk, A.L., Li, N., and Jasanoff, A. 2020. Target-responsive vasoactive probes for ultrasensitive molecular imaging. *Nat Commun* **11**:2399.
- Olar, A., and Aldape, K.D. 2014. Using the molecular classification of glioblastoma to inform personalized treatment. *J Pathol* **232**:165-177.

- Pardridge, W.M. 2017. Delivery of Biologics Across the Blood-Brain Barrier with Molecular Trojan Horse Technology. *BioDrugs* **31**:503-519.
- Paxinos, G., and Watson, C. 2009. *The Rat Brain in Stereotaxic Coordinates: Compact Sixth Edition*. Academic Press.
- Pure, E., and Blomberg, R. 2018. Pro-tumorigenic roles of fibroblast activation protein in cancer: back to the basics. *Oncogene* **37**:4343-4357.
- Reifenberger, G., Wirsching, H.G., Knobbe-Thomsen, C.B., and Weller, M. 2016. Advances in the molecular genetics of gliomas - implications for classification and therapy. *Nat Rev Clin Oncol*
- Soleimany, A.P., and Bhatia, S.N. 2020. Activity-Based Diagnostics: An Emerging Paradigm for Disease Detection and Monitoring. *Trends Mol Med* **26**:450-468.
- Szymczak, A.L., Workman, C.J., Wang, Y., Vignali, K.M., Dilioglou, S., Vanin, E.F., and Vignali, D.A.A. 2004. Correction of multi-gene deficiency in vivo using a single 'self-cleaving' 2A peptide-based retroviral vector. *Nat Biotechnol* **22**:589-594.
- Vandooren, J., Opdenakker, G., Loadman, P.M., and Edwards, D.R. 2016. Proteases in cancer drug delivery. *Adv Drug Deliv Rev* **97**:144-155.
- Verdoes, M., and Verhelst, S.H. 2016. Detection of protease activity in cells and animals. *Biochim Biophys Acta* **1864**:130-142.
- Wahsner, J., Gale, E.M., Rodriguez-Rodriguez, A., and Caravan, P. 2019. Chemistry of MRI Contrast Agents: Current Challenges and New Frontiers. *Chem Rev* **119**:957-1057.
- Warren, J.B., Cockcroft, J.R., Larkin, S.W., Kajekar, R., Macrae, A., Ghatei, M.A., and Bloom, S.R. 1992. Pituitary adenylate cyclase activating polypeptide is a potent vasodilator in humans. *J Cardiovasc Pharmacol* **20**:83-87.

Wen, P.Y., and Reardon, D.A. 2016. Neuro-oncology in 2015: Progress in glioma diagnosis, classification and treatment. *Nat Rev Neurol* **12**:69-70.

FIGURES

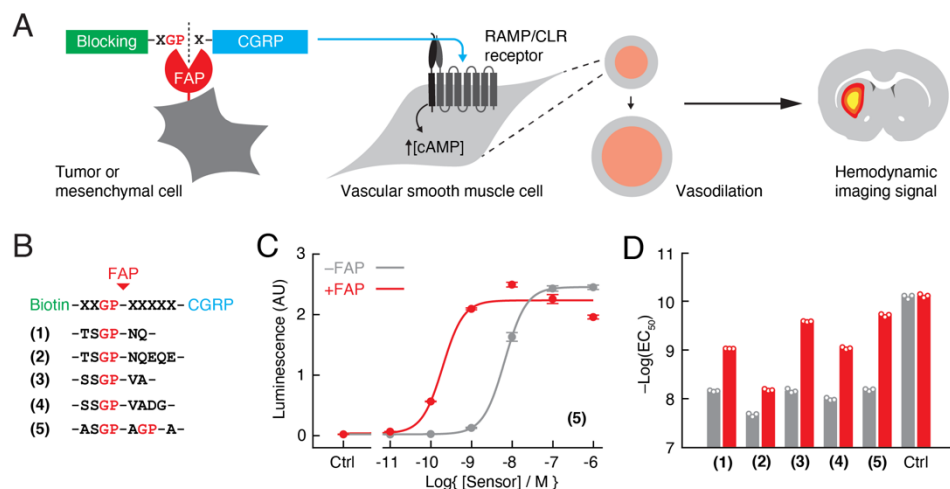


Figure 1. Design of FAP-sensitive vasoactive imaging probes. **(A)** FAP-sensitive vasoprobes are constructed by fusing the vasoactive peptide CGRP (cyan) via a FAP-cleavable linker to a steric blocking domain (green) that prevents CGRP from acting on its receptor when present. Cleavage by cell surface-expressed FAP (red) removes the blocking domain and allows the CGRP domain to stimulate the RAMP/CLR receptor on vascular smooth muscle cells, promoting intracellular cAMP accumulation, vasodilation, and production of consequent hemodynamic imaging signals (right). **(B)** Candidate FAP sensors designed with biotin as a blocking domain and FAP-sensitive linkers for constructs **(1-5)** as shown. **(C)** Luminescence readouts obtained using a cell-based RAMP/CLR activation bioassay during stimulation with varying concentrations of construct **(5)**, with (red) or without (gray) pretreatment by 10 ng/ μ L FAP. Data points reflect mean and SD (error bars) of three technical replicates each. **(D)** Midpoints for receptor activation (EC_{50} values) measured using the bioassay of panel C for constructs **(1-5)** and control peptide (CGRP) with (red) or without (gray) FAP pretreatment.

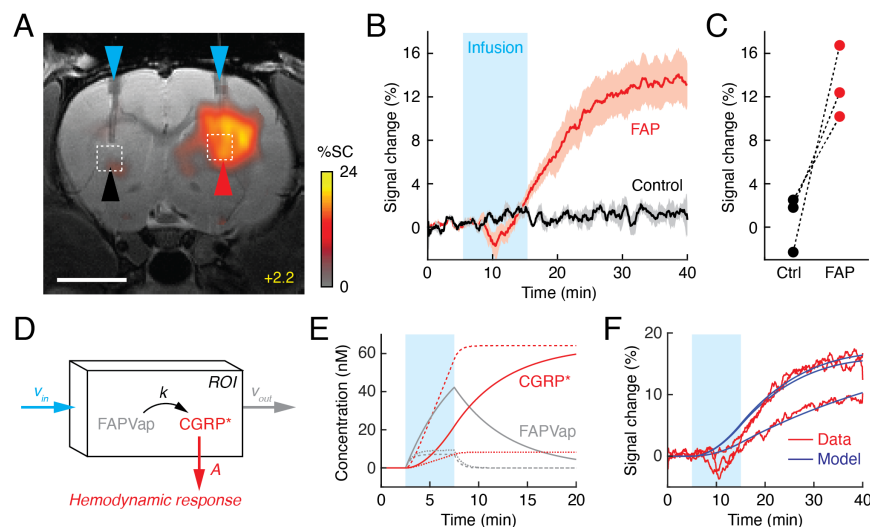


Figure 2. FAPVap reports FAP enzyme activity *in vivo*. **(A)** MRI data from an individual rat implanted with FAP-expressing or control tumor cells (red and black arrowheads, respectively) in the dorsal striatum at bregma + 2.2 mm. 100 nM FAPVap was infused over the tumors via cannulae (blue arrowheads), resulting in signal changes observed in the presence but not the absence of FAP expression. Color scale denotes percent T_2 -weighted MRI signal changes (%SC) recorded after infusion with respect to the pre-infusion baseline. Grayscale image underlay is an anatomical scan. Scale bar = 4 mm. **(B)** Mean time courses of MRI signal expressed as percent change observed before, during (cyan box), and after FAPVap infusion from ROIs defined with respect to FAP-expressing (red) or control (black) xenograft locations in three animals [*cf.* dashed boxes in (A)]. Shading denotes SEM ($n = 3$). **(C)** Magnitudes of FAPVap responses observed in paired probe injections over control (Ctrl) and FAP-expressing tumors. **(D)** Diagram of a kinetic model accounting for rates of FAPVap injection (v_{in}), FAP-catalyzed conversion from FAPVap to CGRP* (k), and efflux of CGRP* (v_{out}) from an ROI. Hemodynamic responses are related to CGRP* concentration by a constant of proportionality, A . **(E)** Concentration dynamics of FAPVap (gray) and CGRP* (red) simulated using the model of (D). Calculations assume that 100 nM FAPVap is infused into an ROI containing 1 nM (solid lines) or 10 nM FAP (dashed lines) with $v_{out} = 0$, or containing 1 nM FAP with $v_{out} = 0.01 \text{ s}^{-1}$ (dotted lines). See text for further details. **(F)** Fitting of model curves (blue) to ROI-averaged FAPVap imaging time courses (red) from three animals, showing that broad features of the MRI signal are closely approximated, with the exception of suspected pressure artifacts during the infusion period.

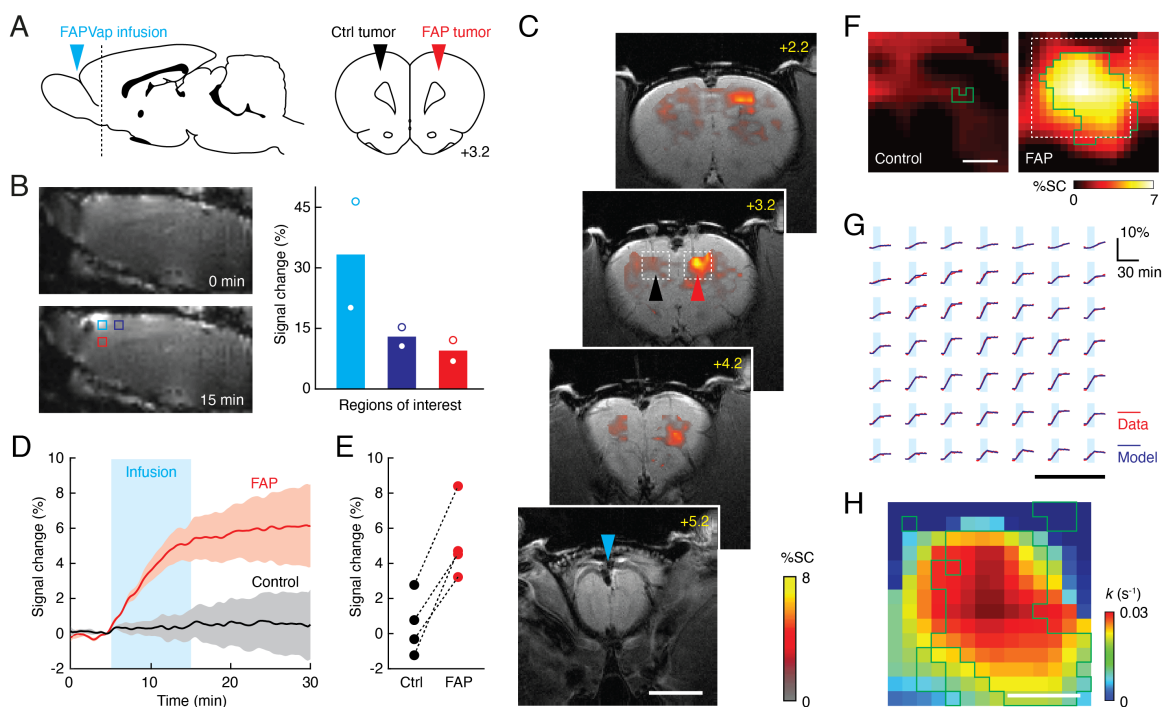


Figure 3. Wide-field imaging of FAP-expressing tumors *in vivo*. **(A)** Geometry employed for wide-field molecular imaging of FAP activity in rat brain tumors. Blue arrowhead denotes probe infusion site. Horizontal dashed line in sagittal view (left) denotes position of coronal section (right) showing location of implanted FAP-expressing and control tumors with respect to brain atlas sections (Paxinos and Watson, 2009). **(B)** Infusion of Gd-DTPA via the intra-CSF route diagrammed in (A) results in broad signal enhancements when comparing T_1 -weighted MRI scans obtained before (top left) and after (bottom left) contrast agent infusion. Plot at right shows signal changes observed in the three color-coded ROIs shown at bottom left, indicating inverse dependence of signal enhancements on distance from the infusion site ($n = 2$). **(C)** Coronal scans of a rat showing infusion location (bregma +5.2 mm) and profiles of T_2^* -weighted MRI signal change (color) following FAPVap infusion in the presence of control (black arrowhead) and FAP-expressing (red arrowhead) xenografts. The gray underlay is an anatomical scan and the scale bar = 4 mm. **(D)** Mean signal change time courses with respect to baseline averaged over ROIs defined with respect to xenografts in four animals. Cyan box denotes the FAPVap infusion period and shaded intervals denote SEM ($n = 4$). **(E)** FAPVap response amplitudes corresponding to the 15 min time point in (D). **(F)** Maps of mean MRI signal changes observed near FAP expressing and control tumors ($n = 4$ each), corresponding to boxed regions as in panel (C). Green outlines denote voxels with responses significantly different from zero (t -test $p \leq 0.05$, $n = 4$). Scale bar = 0.5 mm. **(G)** Analysis of time courses in the boxed region of (F) using the kinetic model of **Figure 2D**, showing comparison of fitted models (blue) to data (red) in a regular grid of individual voxels. Scale bar = 0.5 mm. **(H)** Values of the FAP catalysis rate k obtained by fitting the FAPVap kinetic model to the data in the dashed box of panel F. Green outlines denote values with t -test $p \leq 0.05$ ($n \geq 2$). Scale bar = 0.5 mm.

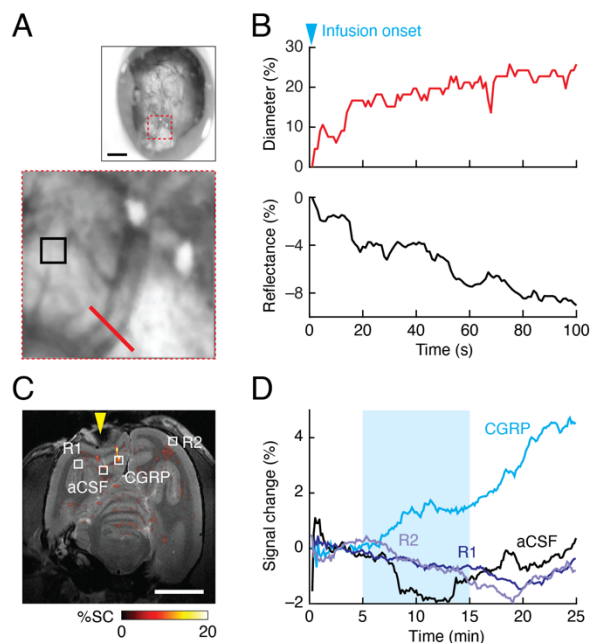


Figure 4. Vasoprobe functionality in nonhuman primate brain. **(A)** Optical imaging of responses to vasoprobe infusion into a cranial chamber (top, **Supplementary Figure 5**) implanted over the cortex of a squirrel monkey. Scale bar = 1 mm. Close-up (bottom) corresponds to red dashed square at top and shows a single blood vessel (red bar), as well as reflective parenchymal tissue (black square). **(B)** Top: diameter of the vessel labeled in (A) over 100 s immediately following onset of perfusion with 100 nM CGRP, equivalent to cleaved FAPVap. Bottom: reflectance from the parenchymal ROI labeled in (A) over the same time period. **(C)** Map of MRI signal changes elicited by injection of CGRP or artificial CSF (aCSF) into the squirrel monkey brain. R1 and R2 denote two uninjected control regions. Yellow arrowhead denotes the position of the cranial chamber in (A). Scale bar = 1 cm. **(D)** Time courses of MRI signal change observed in the four regions designated in (C), before, during (cyan shading), and after vasoprobe infusion.

SUPPLEMENTARY INFORMATION

Supplementary Table 1. Sequences of candidate FAP probes

#	Peptide sequence*
1	Biotin-TSGPNQACDTATCVTHRLAGLLSRSGGVKNNFVPTNVGSKAF
2	Biotin-TSGPNQEQEACDTATCVTHRLAGLLSRSGGVKNNFVPTNVGSKAF
3	Biotin-SSGPVAACDTATCVTHRLAGLLSRSGGVKNNFVPTNVGSKAF
4	Biotin-SSGPVADGACDTATCVTHRLAGLLSRSGGVKNNFVPTNVGSKAF
5	Biotin-ASGPAGPAACDTATCVTHRLAGLLSRSGGVKNNFVPTNVGSKAF

* Color coding: cyan = CGRP sequence; red = FAP dipeptide recognition sites.

Supplementary Table 2. FAP expression plasmid sequence

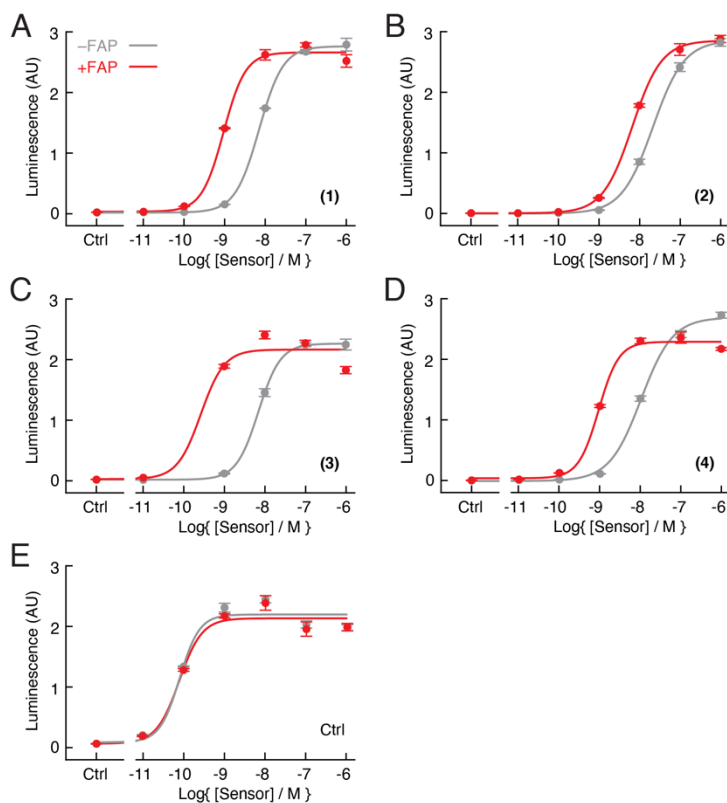
Color coding: gray = hEF1 α promoter; red = human FAP gene; purple = IRES; magenta = mKate gene; green = blasticidin resistance gene.

```
1  tgcctttgca gctaattggac cttctaggtc ttgaaaggag tgggaattgg ctccggtgcc
61  cgtcagtggg cagagcgcac atcgccaca gtccccgaga agttgggggg aggggtcggc
121 aattgaaccg gtgcctagag aaggtaggcg ggggtaaaact gggaaagtga tgcgtgtac
181 tggctccgcc ttttcccgga gggtagggga gaaccgtata taagtgcagt agtcgccgtg
241 aacgttcttt ttcgcaacgg gtttgcgccc agaacacagg taagtgccgt gtgtggttcc
301 cgcgggcctg gcctctttac gggttatggc ccttgcgtgc cttgaattac ttccacctgg
361 ctgcagtacg tgattcttga tcccagactt cgggttggaa gtgggtggga gagttcggag
421 ccttgcgctt aaggagcccc ttcgcctcgt gcttgagttg aggcctggcc tgggcgctgg
481 ggccgcccgc tgcgaatctg gtggacctt cgcgcctgtc tcgctgcttt cgataagtct
541 ctagccattht aaaatthttg atgacctgct gcgacgcttt ttttctggca agatagtctt
601 gtaaatgctg gccaaatctt gcacctgggt atttcggttt ttggggccgc gggcggcgac
661 ggggcccgtg cgtcccagcg cacatgttcg gcgaggcggg gcctgcgagc gcggccaccg
721 agaatcgagc ggggtagtgc tcaagctggc cggcctgctc tggtagcctg cctcgcgccg
781 ccgtgtatcg ccccgccctg ggcgcaagg ctggcccggg cggcaccagt tgcgtgagcg
841 gaaagatggc cgcttcccgg ccctgctgca gggagctcaa aatggaggac gcggcgctcg
901 ggagagcggg cgggtgagtc acccacaca aggaaaagg cctttccgct ctcagccgct
961 gcttcatgtg actccacgga gtaccgggcg ccgtccaggc acctcgatta gttctcgagc
1021 ttttggagta cgtcgtcttt aggttggggg gagggtttt atgcgatgga gtttcccac
1081 actgagtggg tggagactga agttaggcca gcttggcact tgatgtaatt ctcttggaa
1141 tttgcccttt ttgagtttgg atcttggttc attctcaagc ctcagacagt ggttcaaagt
1201 tttttcttc catttcagggt gtcgtgagga attagcttgg tactaatacg actcactata
1261 gcctggccac catgaagact tgggtaaaaa tcgtatttgg agttgccacc tctgctgtgc
1321 ttgccttatt ggtgatgtgc attgtcttac gcccttcaag agttcataac tctgaagaaa
1381 atacaatgag agcactcaca ctgaaggata ttttaaatgg aacatthtct tataaaacat
1441 ttttccaaa ctggatttca ggacaagaat atcttcatca atctgcagat aacaatatag
1501 tactttataa tattgaaca ggacaatcat ataccattht gagtaataga accatgaaaa
1561 gtgtgaatgc ttcaaattac ggcttatcac ctgatcggca atttgtatat ctagaaagtg
1621 attattcaaa gctttggaga tactcttaca cagcaacata ttacatctat gaccttagca
1681 atggagaatt tgtaagagga aatgagcttc ctcgtccaat tcagtattta tgctggtcgc
1741 ctgttgggag taaattagca tatgtctatc aaaacaatat ctatttgaag caaagaccag
1801 gagatccacc ttttcaata acatthaatg gaagagaaaa taaaattht aatggaatcc
1861 cagactgggt ttatgaagag gaaatgcttg ctacaaaata tgctctctgg tggctgccta
1921 atggaaaatt tttggcatat gcggaattta atgatacgga tataccagtt attgcctatt
1981 cctattatgg cgatgaaca tctctagaa caataaatat tccataacca aaggctggag
2041 ctaagaatcc cgttgttcgg atatttatta tcgataccac ttaccctcgc tatgtaggtc
2101 cccaggaagt gcctgtcca gcaatgatag cctcaagtga ttattattht agttggctca
2161 cgtgggttac tgatgaacga gtatgtttgc agtggtctaa aagagtcag aatgtttcgg
2221 tcctgtctat atgtgacttc agggagact ggcagacatg ggattgtcca aagaccagg
2281 agcatataga agaaagcaga actggatggg ctggtaggatt cttgtttca acaccagtht
2341 tcagctatga tgccatthc tactacaaa tatttagtga caaggatggc tacaacata
2401 ttactatath caaagacact gtggaaaatg ctattcaaat tacaagtggc aagttggagg
2461 ccataaatat attcagagta acacaggatt cactgttht ttctagcaat gaatttgaag
2521 aataccctgg aagaagaaac atctacagaa ttagcattgg aagctatcct ccaagcaaga
2581 agtgtgttac ttgccatcta aggaagaaa ggtgccaata ttacacagca agtttcagcg
2641 actacgcaa gtactatgca cttgtctgct acggcccagg catccccatt tccaccctc
2701 atgatggagc cactgatcaa gaaattaaaa tcctggaaga aaacaaggaa ttggaaaatg
2761 ctttgaaaaa tatccagctg ctaaaaggag aaattaagaa actgaagta gatgaaatta
2821 ctttatggta caagatgatt cttcctctc aatttgacag atcaagaag tatcccttg
```

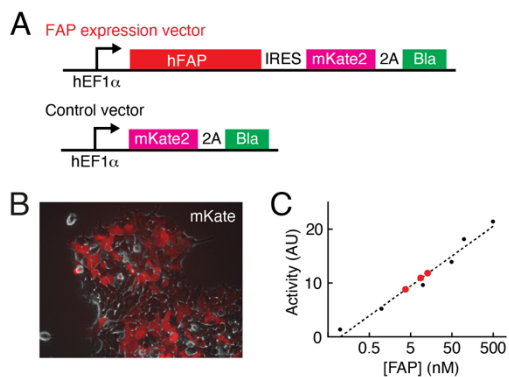
2881 taattcaagt gtatggtggt cctgcagtc agagtgaag gtctgtattt gctgttaatt
2941 ggatatctta tcttgcaagt aaggaaggga tggtcattgc cttggtggat ggtcaggaa
3001 cagctttcca aggtgacaaa ctctctatg cagtgtatcg aaagctgggt gtttatgaag
3061 ttgaagacca gattacagct gtcagaaaat tcatagaaat gggtttcatt gatgaaaaaa
3121 gaatagccat atggggctgg tcctatggag gatacgttc atcactggcc cttgcatctg
3181 gaactggtct tttcaaatgt ggtatagcag tggctccagt ctccagctgg gaatattacg
3241 cgtctgtcta cacagagaga ttcatgggac tcccaacaaa ggatgataat cttgagcact
3301 ataagaattc aactgtgatg gcaagagcag aatatttcag aatgtagac tatcttctca
3361 tccacggaac agcagatgat aatgtgact ttcaaaactc agcacagatt gctaaagctc
3421 tggttaatgc acaagtggat ttccaggcaa tgtggtactc tgaccagaac cacggcttat
3481 ccggcctgtc cacgaaccac ttatacacc acatgacca cttcctaaag cagtgtttct
3541 ctttgtcaga cttaagactgg gatccgccc tctccctccc cccccctaa cgttactggc
3601 cgaagccgct tggataaagg ccggtgtgcg tttgtctata tgttattttc caccatattg
3661 ccgtcttttg gcaatgtgag ggcccggaaa cctggccctg tcttcttgac gagcattcct
3721 aggggtcttt cccctctcgc caaaggaatg caaggctctg tgaatgtcgt gaaggaagca
3781 gttcctctgg aagcttcttg aagacaaaca acgtctgtag cgacccttg caggcagcgg
3841 aacccccac ctggcgacag gtgcctctgc ggccaaaagc cacgtgtata agatacacct
3901 gcaaaggcgg cacaaccca gtgccacgtt gtgagttgga tagttgtgga aagagtcaa
3961 tggctctcct caagcgtatt caacaagggg ctgaaggatg cccagaagg accccattgt
4021 atgggatctg atctggggcc tcggtacaca tgctttacat gtgtttagtc gaggttaaaa
4081 aaacgtctag gcccccgaa ccacggggac gtggttttcc tttgaaaaac acgatgataa
4141 tatggccaca gccaccatgg tgagcgagct gattaaggag aacatgcaca tgaagctgta
4201 catggagggc accgtgaaca accaccactt caagtgcaca tccgagggcg aaggcaagcc
4261 ctacgagggc acccagacca tgagaatcaa ggcggtcgag ggcgccctc tccccttcgc
4321 cttcgacatc ctggctacca gttcatgta cggcagcaaa acctcatca accacacca
4381 gggcatcccc gacttcttta agcagtcctt ccccagggc ttcacatggg agagagtcac
4441 cacatacga gatgggggcg tctgaccgc taccaggac accagcctc aggacggctg
4501 cctcatctac aacgtcaaga tcagaggggt gaacttcca tccaacggc ctgtgatgca
4561 gaagaaaaca ctcggtggg aggcctccac cgagacactg taccctgctg acggcggcct
4621 ggaaggcaga gccgacatgg ccctgaagct cgtgggagg ggccacctga tctgcaacct
4681 taagaccaca tacagatcca agaaacccgc taagaacctc aagatgcccg gcgtctacta
4741 tgtggacagg agactggaaa gaatcaagga ggccgacaaa gagacatacg tcgagcagca
4801 cgaggtggct gtggccagat actgcgacct ccctagcaaa ctggggcaca aacttaattc
4861 cgctgagggc cgcggcagcc tctgacctg cggcgacgtg gaggaanaacc caggccaat
4921 ggctaagcct ttgtctcaag aagaatccac cctcattgaa agagcaacgg ctacaatcaa
4981 cagcatcccc atctctgaag actacagcgt cgcagcgca gctctctcta gcgagggcgg
5041 catcttcaat ggtgtcaatg tatacattt tactggggga cctgtgtcag aactcgtggt
5101 gctgggcaat gctgctgctg cggcagctgg caacctgact tgtatcgtcg cgatcggaaa
5161 tgagaacagg ggcacttga gccctgctg acggtgccga caggtgctt tcgatctgca
5221 tcctgggatc aaagccatag tgaaggacag tgatggacag ccgacggcag ttgggattcg
5281 tgaattgctg ccctctggtt atgtgtggga gggataaggg acaggtgata tccagcacag
5341 tggcggccgc tcgacaatca acctctggat taaaaaatt gtgaaagatt gactggtatt
5401 cttaactatg ttgctcctt tacgctatgt ggatacctg cttaatgcc tttgtatcat
5461 gctattgctt cccgtatggc tttcatttt tctccttgt ataaatcctg gttgctgtct
5521 ctttatgagg agttgtggc cgttgcagg caacgtggcg tgggtgtcac tgtgtttgct
5581 gacgcaaccc cactggttg gggcattgcc accacctgtc agctccttc cgggactttc
5641 gctttcccc tccctattgc cacggcggaa ctcatcgccg cctgccttg ccgctgctgg
5701 acaggggctc ggctgtggg cactgacaat tccgtggtg tgtcggggaa gctgacgtcc
5761 tttccatggc tgctcgctg tgttgcacc tggattctgc gcgggacgtc cttctgctac
5821 gtccctcgg ccctcaatc agcggacctt cttcccgg gcctgctgcc ggctctgagg
5881 cctcttccgc gtcttcgctc tcgcccctc acgagtcgga tctccctttg ggccgctcc
5941 ccgctgggaa ttctgcagat atccggttag taatgagttt ggaattaatt ctgtggaatg
6001 tgtgtcagtt aggggtgga aagtccccag gctccccagg caggcagaag tatgcaaaag

6061 atgcatctca attagtcagc aaccaggtgt ggaaagtccc caggctcccc agcaggcaga
6121 agtatgcaaa gcatgcatct caattagtcg gcaaccatag tcccgccct aactccgcc
6181 atcccccccc taactccgcc cagttccgcc cattctccgc cccatggctg actaattttt
6241 tttatttatg cagaggccga ggccgcctct gcctctgagc tattccagaa gtagtgagga
6301 ggcttttttg gaggctagg cttttgcaaa aagctcccc tgttgacaat taatcatcgg
6361 catagtatat cggcatagta taatacgaca aggtgaggaa ctaaaccatg gccaaagtga
6421 ccagtgccgt tccggtgctc accgcgcgcg acgtcgccgg agcggctgag ttctggaccg
6481 accggctcgg gttctcccgg gacttcgtgg aggcgactt cgccggtgtg gtccgggacg
6541 acgtgaccct gttcatcagc gcggtccagg accaggtggt gccggacaac accctggcct
6601 ggggtgtggg ggcgcgctg gcgagctgt acgccgagtg gtcggaggtc gtgtccacga
6661 acttccggga cgcctccggg ccggccatga ccgagatcgg cgagcagccg tggggcggg
6721 agttcgcct gcgcgaccg gccggcaact gcgtgcactt cgtggccgag gaggcaggact
6781 gacacgtgct acgagattta atggtagctt ttaagaccaa tgacttaciaa ggtagctgta
6841 gatccttagc actttttaaa agaaaagggg ggactggaag ggctagctca ctccaacga
6901 agacaagatc tgctttttgc ttgtactggg tctctctggt tagaccagat ctgagcctgg
6961 gagctctctg gctgcctagg gaaccactg cttaaagcctc aataaagctt gccttgagtg
7021 cttcaagtag tgtgtgccg tctgtgtgt gactctggta actagagatc cctcagacc
7081 ttttagtcag tgtgaaaat ctctagcagt agtagttcat gtcattttat tattcagtat
7141 ttataacttg caaagaaatg aatatcagag agtgagagga acttgtttat tgcagcttat
7201 aatggttaca aataaagcaa tagcatcaca aatttcacaa ataaagcatt tttttcactg
7261 cattctagtt gtggtttgtc caaactcacc aatgtatctt atcatgtctg gctctagcta
7321 tcccgccct aactccgcc agttccgcc attctccgcc ccatggctga ctaattttt
7381 ttatttatgc agaggccgag gccgacgtgt gtttcttaga cgtcagggtg cacttttcgg
7441 ggaaatgtgc gcggaacccc tatttgttta tttttctaaa tacattcaaa tatgtatccg
7501 ctcatgagac aataaccctg ataaatgctt caataatatt gaaaaggaa gaggatgagt
7561 attcaacatt tccgtgtcgc cttattccc tttttgagg cttttgcct tcctgtttt
7621 gctcaccag aaacgctggt gaaagtaaaa gatgctgaag atcagttggg tgcacgagtg
7681 ggttacatcg aactggatct caacagcggg aagatccttg agagttttcg ccccgaagaa
7741 cgttttccaa tgatgagcac ttttaagtt ctgctatgtg gcgaggatatt atcccgtatt
7801 gacgccggg aagagcaact cggtcgccgc atacactatt ctcagaatga cttggttag
7861 tactcaccag tcacagaaaa gcatcttacg gatggcatga cagtaagaga attatgcagt
7921 gctgccataa ccatgagtga taacactgcg gccaaacttac ttctgacaac gatcggagga
7981 ccgaaggagc taaccgcttt tttgcacaac atgggggatc atgtaactcg ccttgatcgt
8041 tgggaaccgg agctgaatga agccatacca aacgacgagc gtgacaccac gatgcctgta
8101 gcaatggcaa caacgttgcg caaactatta actggcgaac tacttactct agcttccgg
8161 caacaattaa tagactggat ggaggcggat aaagttgcag gaccacttct gcgctcggc
8221 cttccggctg gctggtttat tgcgtgataa tctggagccg gtgagcgtgg gtctcgcgg
8281 atcattgcag cactggggcc agatggtaag cctcccgtg tcgtagttat ctacacgagc
8341 gggagtacag caactatgga tgaacgaaat agacagatcg ctgagatagg tgcctcactg
8401 attaaagcatt ggtaactgtc agaccaagtt tactcatata tacttttagat tgatttaaaa
8461 cttcattttt aatttaaaag gatctagggtg aagatccttt ttgataatct catgacaaa
8521 atccctaac gtgagttttc gttccactga gcgtcagacc ccgtagaaaa gatcaaagga
8581 tcttcttgag atcctttttt tctgcgcgta atctgctgct tgcaaaaaaaa aaaaccaccg
8641 ctaccagcgg tggtttgttt gccggatcaa gagctaccaa ctctttttcc gaaggtaact
8701 ggcttcagca gagcgcagat accaaatact gtccttctag tgtagccgta gttaggccac
8761 cacttcaaga actctgtagc accgcctaca tacctcgtc tgctaactcct gttaccagtg
8821 gctgctgcca gtggcgataa gtcgtgtctt accgggttgg actcaagacg atagttaccg
8881 gataaggcgc agcggtcggg ctgaacgggg ggttcgtgca cacagcccag cttggagcga
8941 acgacctaca ccgaactgag atacctacag cgtgagctat gagaaagcgc cacgcttccc
9001 gaaggagaa aggcggacag gtatccggtg acggcaggg tcggaacagg agagcgcagc
9061 agggagcttc cagggggaaa cgcctggtat ctttatagtc ctgtcgggtt tcgccacctc
9121 tgacttgagc gtcgattttt gtgatgctcg tcaggggggc ggagcctatg gaaaaacgcc
9181 agcaacgcgg cttttttagc gttcctggcc ttttgcctgg cttttgctca catgttcttt

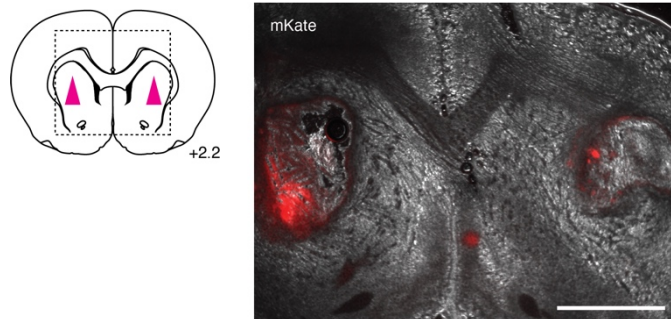
9241 cctgcgttat cccctgattc tgtggataac cgtattaccg cctttgagtg agctgatacc
9301 gctcgcgcga gccgaacgac cgagcgcagc gagtcagtga gcgaggaagc ggaagagcgc
9361 ccaatacgcga aaccgcctct ccccgcgcgt tggccgattc attaatgcag ctggcacgac
9421 aggtttcccg actgaaaagc gggcagtgag cgcaacgcaa ttaatgtgag ttagctcact
9481 cattaggcac cccaggcttt acactttatg cttccggctc gtatgtttgt tggattgtg
9541 agcggataac aatttcacac aggaacacgc tatgaccatg attacgcaa gcgcgcaatt
9601 aaccctcact aaaggaaca aaagctggag ctgcaagctt aatgtagtct tatgcaatac
9661 tctttagatc ttgcaacatg gtaacgatga gttagcaaca tgccttaca ggagagaaaa
9721 agcaccgtgc atgccgattg gtggaagtaa ggtggtacga tcgtgcctta ttaggaaggc
9781 aacagacggg tctgacatgg attggacgaa ccaactgaatt gccgcattgc agagatattg
9841 tatttaagtg cctagctcga tacaataaac gggctctctt ggttagacca gatctgagcc
9901 tgggagctct ctggctaact agggaaacca ctgcttaagc ctcaataaag cttgccttga
9961 gtgcttcaag tagtgtgtgc ccgtctgtt tgtgactctg gtaactagag atccctcaga
10021 cccttttagt cagtgtggaa aatccttagc agtggcgccc gaacagggac ctgaaagcga
10081 aagggaaacc agagctctct cgacgcagga ctcggcttgc tgaagcgcgc acggcaagag
10141 gcgagggcg gcgactggg agtacgcaa aaattttgac tagcggaggc tagaaggaga
10201 gagatgggtg cgagagcgtc agtattaagc gggggagaat tagatcgcga tgggaaaaaa
10261 ttcggttaag gccaggggga aagaaaaaat ataaattaa acatatagta tgggcaagca
10321 gggagctaga acgattcgca gttaatcctg gcctgttaga aacatcagaa ggctgtagac
10381 aaatactggg acagctaca ccatccctc agacaggatc agaagaactt agatcattat
10441 ataatacagt agcaaccctc tattgtgtgc atcaaaggat agagataaaa gacaccaagg
10501 aagctttaga caagatagag gaagagcaa acaaaagtaa gaccaccgca cagcaagcgg
10561 ccgctgatct tcagacctg agggagagat atgagggaca attggagaag tgaattatat
10621 aaatataaag tagtaaaaat tgaaccatta ggagtagcac ccaccaaggc aaagagaaga
10681 gtggtgcaga gaaaaaaag agcagtggga ataggagctt tgttccttgg gtcttggga
10741 gcagcaggaa gcactatgg gcgagcctca atgacgctga cggtagaggc cagacaatta
10801 ttgtctggta tagtgcagca gcagaacaat ttgtgaggg ctattgaggc gcaacagcat
10861 ctgttgaac tcacagtctg gggcatcaag cagctccagg caagaatcct ggctgtggaa
10921 agatacctaa aggatcaaca gtcctgggg atttggggtt gctctgaaa actcatttgc
10981 accactgctg tgccttggaa tgctagtgg agtaataaat ctctggaaca gattggaatc
11041 acacgacctg gatggagtgg gacagagaaa ttaacaatta cacaagctta atacactcct
11101 taattgaaga atcgcaaac cagcaagaaa agaataaaca agaattattg gaattagata
11161 aatgggcaag tttgtggaat tggtttaaca taacaaattg gctgtggtat ataaaattat
11221 tcataatgat agtaggaggc ttggtagggt taagaatagt ttttctgta ctttctatag
11281 tgaatagagt taggcaggga tattcaccat tatcgtttca gaccacctc ccaaccccga
11341 ggggacccga caggcccga ggaatagaag aagaagggtg agagagagac agagacagat
11401 ccattcgatt agtgaacgga tctcgcggt taacttttaa aagaaaagg gggattggg
11461 ggtacagtgc aggggaaaga atagtagaca taatagcaac agacatacaa actaaagaat
11521 taaaaaaca aattacaaaa attcaaaatt ttattccagt gtggtggaat tctgcagtc



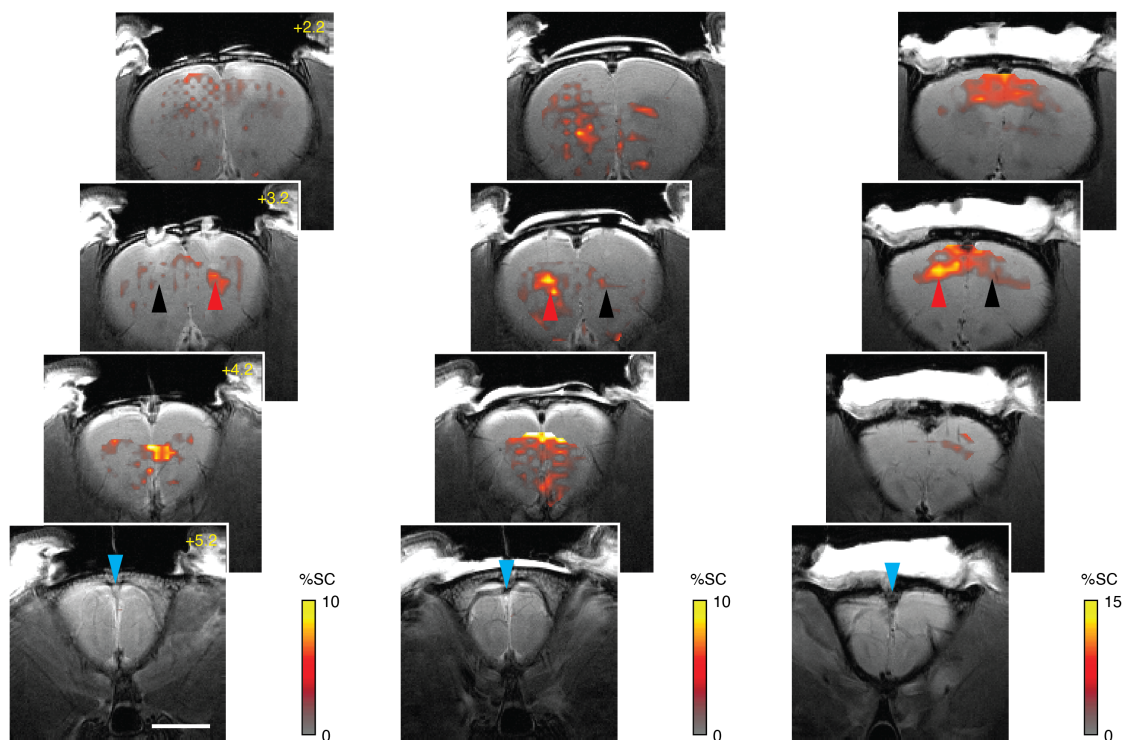
Supplementary Figure 1. Assessment of candidate FAP sensors *in vitro*. Measurements of RAMP/CLR receptor activation obtained using the bioassay technique of **Figure 1C** for candidate FAP sensors (**A-D**) and α -CGRP control peptide (**E**), with (red) or without (gray) pretreatment by 10 ng/ μ L FAP. Data points reflect mean and SD (error bars) of three technical replicates each.



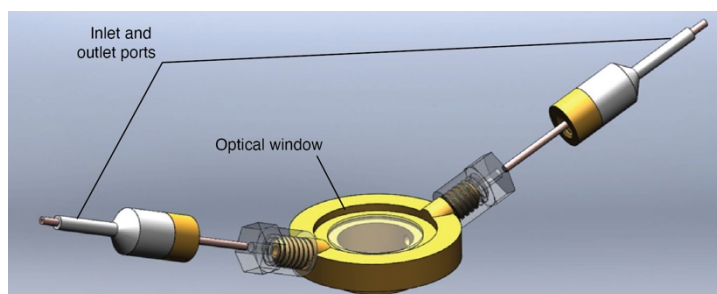
Supplementary Figure 2. FAP expression in transfected cells. **(A)** Constructs for directing FAP expression (top) or control mKate expression (bottom) in stably transfected HEK293FT cells. **(B)** Visualization of mKate expression in FAP-expressing cells. **(C)** Quantification of FAP expression from three aliquots of transfected cells (red data points) with respect to calibration standards (black data points). Assay wells contained $\sim 10^5$ cells in a 100 μ L volume. FAP expression measurements correspond to free enzyme concentrations of 3-13 nM.



Supplementary Figure 3. Microscopic visualization of brain xenografts. Position of xenografts for the experiments of **Figure 2** indicated at left in a brain atlas slice at bregma = 2.2 mm. Micrograph at right shows xenografts *in situ*, with mKate expression reflected by red fluorescence. Scale bar = 2 mm.



Supplementary Figure 4. Wide-field molecular imaging of FAP activity in rat brain. Sets of four coronal scans from three rats, analogous to the data in **Figure 3C**, with cyan arrowheads indicating infusion location (bregma +5.2 mm) and profiles of MRI signal change (color) following FAPVap infusion in the presence of control (black arrowhead) and FAP-expressing (red arrowhead) xenografts. Gray underlays are corresponding anatomical scans and the scale bar = 4 mm.



Supplementary Figure 5. Optical window implant for cortical surface imaging in monkeys. Inlet and outlet ports as well as the optical window itself are indicated. The hidden lower surface of the chamber is cemented to the animal's skull, above a craniotomy (see Materials and Methods).