

May 10 2021

**A broadly active fucosyltransferase *LmjFUT1* whose mitochondrial localization and catalytic activity is essential in parasitic *Leishmania major***

**Hongjie Guo<sup>1</sup>, Sebastian Damerow<sup>2,a</sup>, Luciana Penha<sup>1,b</sup>,  
Stefanie Menzies<sup>1,c</sup>, Gloria Polanco<sup>1</sup>, Hicham Zegzouti<sup>3</sup>, Michael A. J.  
Ferguson<sup>2</sup>, and Stephen M. Beverley<sup>1,\*</sup>**

<sup>1</sup> Dept. of Molecular Microbiology, Washington University School of Medicine, St. Louis, MO 63110, USA;

<sup>2</sup> Division of Biological Chemistry & Drug Discovery, Wellcome Trust Biocentre, College of Life Science, University of Dundee, Dundee DD1 5EH, Scotland, United Kingdom;

<sup>3</sup> R&D Department, Promega Corporation, 2800 Woods Hollow Road, Madison, WI 53711, USA.

Current addresses: <sup>a</sup> Richter-Helm BioLogics GmbH, Suhrenkamp 59, 22335 Hamburg, Germany email; <sup>b</sup> Universidade Federal do Rio de Janeiro, Instituto de Biofísica Carlos Chagas Filho. Av Carlos Chagas Filho 373 CCS bloco G Ilha do Fundão, Rio de Janeiro RJ Brasil, 21949900 ; <sup>c</sup> Liverpool School of Tropical Medicine, Pembroke Place Liverpool L3 5QA UK.

\*Corresponding author: Department of Molecular Microbiology, Campus Box 8230, Washington University School of Medicine, 660 S. Euclid Ave., St. Louis MO 63110 USA. Telephone 314-747-2630, FAX 314-747-2634, [stephen.beverley@wustl.edu](mailto:stephen.beverley@wustl.edu).

**Abbreviations:** LPG, lipophosphoglycan; LmFV1, *L. major* Friedlin V1; FUT, fucosyltransferase; WT, wild type; GFP, green fluorescent protein; PBS, phosphate buffer saline; kDNA, kinetoplast network DNA; Fuc, L-fucose; D-Arap, D-arabinopyranose; MTP, mitochondrial targeting peptide;

Classification: Biological Sciences, Microbiology

Short title: Mitochondrial fucosyltransferase in *Leishmania major*

Keywords: mitochondria, trypanosomatid protozoan parasites, glycobiology, glycosyltransferase, fucose

Author contributions: HG, SD, SM, LP GP MAJF and SMB designed research; HG, SD, LP, GP, and SM performed the work; HZ contributed key reagents and methods; HG, SD, LP, GP, SM, MAJF and SMB analyzed data; HG MAJF and SMB wrote the paper.

## ABSTRACT

Glycoconjugates play major roles in the infectious cycle of the trypanosomatid parasite *Leishmania*. Recently we showed that GDP-Fucose synthesis is essential, although fucosylated glycoconjugates have not been reported in *Leishmania major*. The *Leishmania* genome predicts at least five candidate fucosyltransferases, four of which appear targeted to the secretory pathway; *SCA1* and *SCA2* play a role in side-chain modifications of the abundant surface glycoconjugate lipophosphoglycan, while gene deletion studies here showed that *FUT2* and *SCAL* were not essential. Unlike most eukaryotic glycosyltransferases, the predicted  $\alpha$  1-2 fucosyltransferase encoded by *FUT1* localized to the mitochondrion. Enzymatic assays of tagged proteins expressed *in vivo* or of purified recombinant FUT1 showed it to have fucosyltransferase activity, with a relative broad substrate specificity including glycans and peptide substrates. A quantitative ‘plasmid segregation’ assay, expressing *FUT1* from the multicopy episomal pXNG vector in a chromosomal null  $\Delta fut1$ - background established that *FUT1* is essential. We used plasmid shuffling to confirm that both enzymatic activity and mitochondrial localization were essential for viability, comparing import-blocked or catalytically inactive enzymes respectively. Unexpectedly a single rare  $\Delta fut1^S$  mutant was obtained, which showed severe growth defects accompanied by mitochondrial dysfunction and loss, all of which were restored upon *FUT1* re-expression. Thus, *FUT1* along with the similar *Trypanosoma brucei* enzyme TbFUT1 (1) joins the eukaryotic O-GlcNAc transferases as one of the few glycosyltransferases acting within the mitochondrion. Current work is now oriented towards identifying the *Leishmania* fucosylated targets therein.

## Significance

Abundant surface glycoconjugates play key roles in the infectious cycle of protozoan parasites including *Leishmania*. In the course of defining their biosynthetic pathways we identified a fucosyltransferase that was localized to the parasite mitochondrion, a rare atypical compartment for such enzymes. Functional tests showed that this enzyme FUT1 was essential for normal growth, requiring both mitochondrial localization and enzymatic activity. Loss of FUT1 in a rare segregants showed extensive mitochondrial defects, all reversed upon FUT1 re-expression. Enzymatic tests revealed an ability to fucosylate both glycan and peptide substrates, although as yet the native substrate is unknown. The essentiality of *FUT1* in *Leishmania* and as shown elsewhere in *Trypanosoma brucei* suggests a potential as a chemotherapeutic target, and its mitochondrial localization in a simple genetically amenable eukaryote may provide an opportunity for probing the more complex mitochondrial isoforms of mammalian O-GlcNAc transferase.

# Introduction

*Leishmania* is a widespread human pathogen, with more than 1.7 billion people at risk, several hundred million infected, and with 12 million showing active disease ranging from mild cutaneous lesions to severe disfiguring or ultimate lethal outcomes (2-4). The *Leishmania* infectious cycle alternates between extracellular promastigote in the midgut of sand fly and intracellular amastigote residing within macrophages of the mammalian host, where it survives and proliferates in highly hostile environments. These parasites have evolved specific mechanisms enabling them to endure these adverse conditions, including a dense cell surface glycocalyx composed of lipophosphoglycan (LPG), (GPI)-anchored proteins (GP63 and GP46), glycosylinositolphospholipids (GIPLs) and secreted glycoconjugates such as proteophosphoglycan (PPG) and secreted acid phosphatase (sAP) (reviewed in 5, 6-8). One prominent feature of LPG, PPGs and sAPs is the presence of disaccharide phosphate repeating units ([6Gal( $\beta$ )1,4)Man( $\alpha$ 1)-PO<sub>4</sub>]), also termed phosphoglycan or PG repeats.

Our lab has focused on both forward and reverse genetic approaches to map out glycoconjugate synthesis in *Leishmania*, focusing on genes impacting LPG and related glycoconjugates (9, 10) as well as ether lipids and sphingolipids (11, 12). These studies have provided powerful tools leading to new insights on the requirements for LPG and related phosphoglycan -bearing molecules in both parasite stages within the mammalian and sand fly hosts (6, 7, 13-19).

In several *Leishmania* species modifications of the dominant PG repeats play key roles in the insect stages in mediating both the attachment and release of promastigotes and metacyclics, respectively, from the sand fly midgut via binding to the Pp Galectin there (20). In *L. major*

strain FV1,  $\beta$ 1-3 galactosyl modifications of the PG repeating units enable replicating promastigotes to bind to the midgut lectin PpGalec, while D-Arabinopyranosylation of the side-chain galactosyl residues block this interaction and allow release of parasites for subsequent transmission (20-22). Accordingly, we used forward genetic analysis to identify a large family of LPG side chain galactosyltransferases (SCG1-7) and D-Arabinopyranosyltransferases (SCA1/2) mediating these key modifications (22-27).

As D-Arap is relatively uncommon in nature (28), we were motivated to explore its synthetic pathway. Previously we identified two genes showing strong homology to the bifunctional *Bacteroides* protein FKP mediating synthesis of GDP-L-Fucose through successive kinase and pyrophosphorylase steps (29, 30). Many enzymes using L-Fuc will also accept D-Arap (which differ only by the 6-methyl group), and assays of the two recombinant *Leishmania* proteins showed that indeed one could synthesize both GDP-D-Arap and GDP-L-Fuc (AFKP; LmjF.16.0480), while the second could only synthesize GDP-L-Fuc (FKP; LmjF.16.0440; (30). These data were consistent with studies showing the presence of both GDP-Fuc and GDP-Arap in *Leishmania* (31). Correspondingly, genetic studies showed that knockouts of *AFKP* completely abrogated GDP-Arap and arabinosylated LPG synthesis, while knockouts of *FKP* showed no effect (30). However, we were unable to knockout both genes simultaneously, suggesting an unanticipated role for GDP-Fuc. That the essential role of A/FKPs depended on GDP-Fucose was established when GDP-Fuc but not GDP-Arap was provided through expression of the two *de novo* GDP-Fucose enzymes from *Trypanosoma brucei*, GDP-mannose 4,6-dehydratase (GMD) and GDP-Fuc synthetase, also known as GDP-4-dehydro-6-deoxy-D-mannose epimerase/reductase (GMER) (32). Similarly the loss of *de novo* GDP-fucose synthesis was also lethal in *T. brucei*, which lacks the FKP salvage pathway (32).

The essentiality of GDP-Fuc was unexpected since there are few reports of fucosylated molecules in *Leishmania*. One is a “Fucose Mannose Ligand” from *L. donovani* (33) for which a definitive structure has not been presented. Several proteins were predicted to be fucosylated from mass spectrometric proteome studies of *L. donovani*, albeit without experimental confirmation (34). More recently, *L. tarentolae* was explored as candidate for heterologous genes expression where fucosylation of erythropoietin was seen (35). While untested, it seemed unlikely that any of these putative fucosylations would be essential for growth in culture. These data suggest that any putative essential Fuc-glycoconjugate predicted from genetic deletion studies must be relatively rare and/or cryptic.

To better understand the fucose requirement in *Leishmania*, and guide efforts to identify the essential fucose-conjugate, we surveyed candidate fucosyltransferases (FUTs). Informatic studies revealed five candidate FUTs (Table 1), of which only *FUT1* was conserved in all trypanosomatids, and the only one essential in *Leishmania*. Unexpectedly, FUT1 localizes within the parasite mitochondrion, an uncommon observation for glycosyltransferases. Thus we obtained genetic evidence that this localization as well as its catalytic activity is essential for viability, and that its absence leads to severe mitochondrial dysfunction.

## **Results**

### **Database mining for fucosyltransferase (FUTs)/ arabinopyranosyltransferase(AraTs)**

**candidates in *L. major*** Using a diverse collection of FUTs compiled from GenBank or CAZY databases(36), we searched the predicted *L. major* proteome for proteins showing significant similarities and/or conserved motifs. Two new candidates (*FUT1*, LmjF01.0100; *FUT2*, LmjF.02.0330) as well as three previously described genes emerged (*SCA1*, LmjF02.0220; *SCA2*,

*LmjF02.0180*; *SCAL*, *LmjF34.0510*) (Table 1). Of these, only *FUT1* was conserved in trypanosomes, while *FUT2* occurred in *Trypanosoma cruzi* (Table 1).

**SCA1/2.** The closely related *SCA1/2* (Side-Chain-Arabinosyltransferase) genes (>99% identity) had been identified functionally and enzymatically as Golgi  $\alpha$  1,2 D-Arap transferases modifying Gal-substituted PG repeating units of LPG in *L. major* during metacyclogenesis (24, 27). Interestingly, when provided with high levels of external L-Fucose the LPG PG repeating units can become fucosylated, likely mediated by these two enzymes (37). Since *Leishmania* require neither galactosylated nor arabinosylated LPG for growth in culture or metacyclogenesis (15, 38), their study was deprioritized here.

**SCAL.** (*SCA1/2*-like) was identified with 31% identity to the *SCA1/2* proteins, which together constitute CAZY family 79 (27, 36). The lack of any related genes in *T. brucei* and *T. cruzi* is consistent with the absence of GDP-D-Arap in both (31) (Table 1). We were able to knock-out both alleles of *SCAL* without difficulty and the mutant showed no appreciable growth defect in the culture (Fig S1), suggesting that this gene is not essential *in vitro*, or is redundant with other proteins.

**FUT2.** The predicted FUT2 protein was identified by similarity to the CAZY family GT10, which comprises  $\alpha$ 1,3 or 1,4 fucosyltransferases (36). Strong homology of the 1604 aa FUT2 protein was seen with PFAM family 00852 ( $\alpha$ 1,3 or 1,4 fucosyltransferases) from residues 1049-1159, along with other motifs characteristic of this family (39, 40). Using a plasmid segregation test (described further below for *FUT1*), we were able to knockout both alleles of *FUT2* without difficulty (Fig S2), suggesting that this gene is not essential during *in vitro* culture, or is redundant with other proteins.



***FUT1***. The predicted FUT1 protein showed relationships to the CAZY GT11 family comprised mostly of  $\alpha$  1, 2 fucosyltransferases (36). Unlike the four other FUTs, orthologous genes were found in all three trypanosomatid genomes (Table 1). The annotated Lmj*FUT1* predicted a protein of 348 amino acids, exhibiting four characteristic motifs of the GT11 family (Fig. 1), of which motif I (HVRRGDY) has been implicated in the binding of GDP-fucose (40). While SCA1, SCA2, SCAL and FUT2 resembled typical eukaryotic fucosyltransferases, predicted to be type II membrane proteins within the secretory pathway(40, 41), no transmembrane domain was detected in FUT1 (TMHMM: <http://www.cbs.dtu.dk/services/TMHMM>, SOSUI: <http://harrier.nagahama-i-bio.ac.jp/sosui>, or DAS-TMfilter: <http://www.enzim.hu/DAS/DAS.html>). Surprisingly, FUT1 instead bore a predicted mitochondrial targeting sequence by two algorithms (88%; TargetP and MitoProt; Armenteros, 2019 #9613; Claros, 1996 #9615} For *L. major*, the predicted N-terminal mitochondrial targeting peptide (MTP) comprised the N-terminal 23 amino acids upstream of motif IV, rich in Arg and hydrophobic amino acids (Fig. 1). The LmjFUT1 mitochondrial localization and its requirement for viability were established experimentally below.

### **Generation of chromosomal null mutants ( $\Delta fut1^-$ ) in the presence of ectopically expressed**

***FUT1***. Anticipating that *FUT1* could encode an essential fucosyltransferase, we employed a plasmid segregation-based strategy, in which a counter-selectable ectopic copy of *FUT1* was introduced prior to ablation of the chromosomal *FUT1* alleles (42). WT *L. major* parasites were first transfected with an episomal pXNGPHLEO-*FUT1* construct, followed by successive inactivation of the two chromosomal *FUT1* alleles using *SAT* and *PAC* targeting constructs. PCR tests confirmed that the marker replacements occurred as planned and the chromosomal alleles of *FUT1* were precisely deleted, with retention of the episomal FUT1 (Fig. 2A,B; Fig S3).

For simplicity chromosomal deletions are hereafter referred to as  $\Delta futI^-$ , with this line termed  $\Delta futI^-/+pXNGPHLEO-FUT1$ .

For plasmid segregation tests, parasites were grown briefly (24 h) in the absence of phleomycin to allow loss of pXNGPHLEO. Parasites were then analyzed for GFP expression by flow cytometry, as a measure of pXNG copy number (42). Two populations emerged: a large population of ‘bright’ cells showing strong fluorescence bearing high copy numbers of pXNGPHLEO-*FUT1* (>200 FU); and a smaller population of ‘dim’ cells, exhibiting control/background fluorescence levels (2-20 FU), lacking pXNG-*FUT1* completely, or bearing only a few copies (Fig. 2C).

Fluorescence-activated cell sorting was then used to recover single cells into individual wells of a 96 well microtiter plate, containing M199 medium without phleomycin. For the ‘bright’ cell population, 157/192 cells inoculated with single “bright” parasites grew out (81%), representing the ‘cloning/plating’ efficiency of cells subjected to this protocol. In contrast, growth was seen in only 11/288 of the ‘dim’ parasites tested similarly (4 %; Fig. 2D). The 11 survivors still retained pXNGPHLEO-*FUT1* as judged by their ability to grow out in the presence of phleomycin and expression of GFP (data not shown), likely arising by imperfect sorting or other technical factors as seen previously (42). After correction for the plating/cloning efficiency, we estimated that *FUT1*-null mutants were not obtained from 236 cells tested. This greatly exceeds the resolution of classic ‘failed to recover deletion’ protocols and suggests that under these conditions, *FUT1* is essential.

**FUT1 is localized in mitochondria.** To confirm the surprising prediction of mitochondrial localization, we expressed a C-terminal HA-tagged FUT1 protein using the pIR1NEO vector as an episome; this construct was introduced into the  $\Delta futI^-/+pXNGPHLEO-FUT1$  line, yielding

$\Delta futI^{-/-}$  +pXNGPHLEO-*FUT1* / pIR1NEO-*FUT1*-HA (Fig. 2E). We then used “plasmid shuffling” to select for a line which had lost untagged pXNG-*FUT1* construct but maintained the tagged pIR-*FUT1*. Following single cell sorting, 85% of the bright cell wells grew out (Fig. 2F). Similarly, 67 % of the dim cells also grew out, and subsequent tests showed that 96% (26/27) tested lacked GFP and were phleomycin sensitive, while retaining tagged FUT1-HA, yielding  $\Delta futI^{-/-}$  + pIR1NEO-*FUT1*-HA (Fig. 2F). These data confirmed that a C terminal HA tag did not comprise *FUT1* function.

Immunofluorescence analysis (IFA) was used first to assess localization of HA-tagged FUT1 using  $\Delta futI^{-/-}$  + pIR1NEO-*FUT1*-HA cell line. Anti-HA antibody was used to stain the parasites after labeling with mitochondrial marker MitoTracker Red, and the co-localization coefficient was calculated (Pearson’s). As anticipated from the initial predication, the HA-tagged FUT1 co-localized completely with the mitochondrial marker with a Pearson’s co-localization index of  $0.97 \pm 0.03$  (Fig. 3A).

Cryo-immunoelectron microscopy using anti-HA conjugated beads binding to FUT-HA showed binding primarily to the mitochondrion, generally within the lumen (Fig. 3B). Quantitation of bead density showed more than 94% binding to the mitochondrion, far greater than seen to other compartments (Fig. 3C). Similar results were obtained with C- terminal HA-tagged FUT1 expressed in WT cells. In contrast, expression of an N-terminally HA tagged FUT1 in WT parasites failed to give any signal in western blotting or IFA using anti-HA antibody , consistent with the prediction that N-terminal FUT1 functions as a mitochondrial targeting peptide, which would be expected to be cleaved off during import. We tested deletions of the extended LmjFUT1 MTP region for mitochondrial localization and/or function (Fig. S4). A 16 aa truncation (MSKAR) was fully functional and mitochondrially

targeted, a 17 aa truncation (MKAR) was partially functional and mitochondrially targeted, and a 18 aa truncation (MAR) was not functional but partially mitochondrially targeted (Fig S4). These data suggest first that LmjFUT1 may possess a cryptic mitochondrial targeting sequence, resembling the N terminus of TbFUT1, which we show elsewhere is also mitochondrially targeted (1). These data further suggest that in trypanosomatids critical residues of the Motif IV region may extend functionally further towards the N terminus than in other species.

**Recombinant FUT1 is an active fucosyltransferase.** When expressed in *E. coli* most FUT1 was insoluble, despite trials with several protein fusion expression systems, a common observation for eukaryotic glycosyltransferases (43) (Fig. 4A, lanes 1-4). The best results were often GST-FUT1 fusions, yielding a small fraction of soluble recombinant protein (<5%), which could be purified by GST affinity chromatography (Fig. 4A, lanes 5,6). The fusion protein had an apparent molecular weight of 66 kDa similar to the theoretical value (64 960 Da), and the major impurity appeared to be GST (Fig 4A, lane 6). All preparations tended to be unstable, and assays were performed on freshly purified material including an active acceptor control (below). Attempts to cleave the GST tag from the fusion protein using Factor Xa yielded little free FUT1, and the fusion protein was used for enzymatic characterizations.

To assay recombinant GST-FUT1 we used an indirect assay which measures GDP arising from glycosyltransferase activity, through coupling to ATP synthesis and measurement by a luciferase/luciferin reaction (44). Initially, recombinant GST-FUT1 was incubated with GDP-Fuc as donor and  $\beta$ -D-Gal-(1 $\rightarrow$ 3)-D-GlcNAc (lac-N-biose or LNB) as acceptor. A reaction time course established the product to increase linearly for the first 6 min and to plateau by 20 min (Fig 5A).

In the absence of the acceptor, GDP-Fuc was hydrolyzed and an increase in GDP could be detected (Fig 5A, curve labelled ‘hydrolysis activity’). Such acceptor independent activity is not unusual for FUTs previously in the absence or with sub-optimal substrates (44, 45). In the presence of LNB acceptor GDP formation increased ~2-fold (Fig. 5B, curve labelled “Total activity”). Acceptor-dependent fucosyltransferase activity was calculated from the difference between these two curves (Fig 5A; curve labelled “fucosyltransferase activity”). From these findings initial rate data were calculated from a 5 min reaction, and established that the optimum conditions for the coupled reaction were 37°C, pH 6 with LNB as an acceptor, yielding a specific activity of recombinant GST-FUT1 of  $59 \pm 5.4$  nmol/min/mg protein (Fig. 6E). In these assays, recombinant LmjFUT1 lacked activity with the glycan acceptors N-acetyllactosamine (LacNAc),  $\beta$ -Galactose, Gal $\beta$ 1,3GalNAc (Fig. 5B). Overall the activity seen with the substrates tested mirrored those observed elsewhere for TbFUT1, where a wider range was tested but with LNB similarly being most active (1).

We confirmed the fucosyltransferase activity of recombinant FUT using enzyme expressed within *Leishmania*. Whole cell lysates of WT or  $\Delta fut1^-$  parasites bearing pIR1NEO-FUT1-HA were applied to anti-HA-agarose beads, which were washed and then incubated with GDP-[ $^3$ H]-Fuc and LNB. With both cell lines, a new product was observed, similar to that seen with a control expressing TbFUT1, shown elsewhere to be to Fuc $\alpha$ 1,2Gal $\beta$ 1,3GlcNAc (1). As expected, no products other than [ $^3$ H]-Fuc were found with WT lacking tagged FUT1, again attributed to hydrolysis of the GDP-Fuc substrate (Fig. 5A,C). As the  $\Delta fut1^-$  pIR1NEO-TbFUT1 mutant was obtained by plasmid shuffling in a  $\Delta fut1^-$  background (Experimental Procedures), these data proved this heterologous enzyme could satisfy the *Leishmania* FUT1 requirement (Fig 5C, lane 3).

Two peptide substrates for mammalian protein-O-transferases 1 and 2, corresponding to the epidermal growth factor-like repeats (EGFR) or thrombospondin-like repeats (TSR; kindly provided by R. Haltiwanger; (46, 47)) lacked activity with recombinant LmjFUT1 (Fig. 5B). We synthesized peptides bearing 5 amino acids on either side of the proposed fucosylation sites of the *L. infantum* mitochondrial HSP60 or HSP70 (34), which both showed significant acceptor-dependent fucosyltransferase activity (Fig. 5B). To confirm this unexpected activity against a peptide substrate, we incubated LmjFUT1 with the mHSP70 peptide and GDP-Fucose, and analyzed the fucosylated product by mass spectrometry, where fucosylation of the central target serine residue was clearly evident (Fig. S5). Thus, LmjFUT1 could recognize a diverse spectrum of acceptors *in vitro*, including both glycan and peptide substrates.

**Mitochondria localization is required for the essential role(s) of FUT1.** While FUT1 was found primarily in the mitochondrion (Fig. 3), occasionally the predominant distribution of a protein may be misleading about its true site of function (48). Thus, we asked whether mitochondrial localization was required for *FUT1* function, by testing mutants where the mitochondrial targeting was compromised (Fig. 6). Based on characteristic features of mitochondrial targeting peptides (MTPs; (49)), we replaced the first two Arg residues with Glu, predicted to reduce the probability of mitochondrial import from 88% to 3% (MitoProtII; MTP-MUT, Fig 6A). Similarly, we fused the cytosolic protein PTR1 to the N-terminus of FUT1 (BLOCK-MUT), anticipating that the large 30 kDa PTR1 would block recognition of a far-internal MTP (Fig. 6A). Both modifications were made with the C-terminally HA tagged FUT1 expressed in pIR1NEO, rendering them suitable for immune-detection and functional tests (Fig. 6B). Plasmid shuffling tests showed that neither MTP-MUT nor BLOCK-MUT could substitute for WT-FUT1, as only 2-3% of the ‘dim’ cells survived (vs. 90 ~ 90 % for ‘bright’ cells; Fig 6C).

Again, tests showed that the few surviving dim cells had retained the WT FUT1 plasmid and thus were not true segregants (Fig. 6C).

Immunofluorescence analysis of the tagged proteins showed that unlike the HA-tagged WT FUT1, HA-tagged MTP-MUT and BLOCK-MUT proteins were now localized to the cytoplasm (Fig 6D). Two essential controls were performed to validate the conclusion above. First, western blot analysis showed that despite their cytosolic localization, expression of the MTP-MUT or BLOCK-MUT proteins was comparable to that of the WT FUT1 in *Leishmania*, relative to an H2A loading control (Fig, 4B). Consistent with the cytosolic localization and lack of mitochondrial targeting peptide cleavage, the size of MTP-MUT-HA was slightly greater than WT-HA, calculated to be about 40 kDa, close to the theoretical uncut protein (39.5 kDa; Fig 4B). Second, we expressed and purified tagged MTP-MUT and BLOCK-MUT proteins in *E. coli*, and showed that their specific FUT activity was the same as WT (Fig 6E). Thus, the failure of the mutants to rescue the chromosomal  $\Delta fut1^-$  mutant did not arise because of the failure to express an active *FUT1*, instead, arising solely from failure of mutant proteins to enter the mitochondrion.

**Fucosyltransferase activity of FUT1 is required for the essential function.** We next tested whether the essential function of FUT1 required fucosyltransferase activity, perhaps through a structural role (50). We mutated the first arginine to alanine (R297A) in the FUT1 motif I (Fig. 1B), conserved in many fucosyltransferase families (40) and mutation of which causes 97-100% loss of in catalytic activity (51, 52). A C-terminal HA tagged FUT1 CAT mutant was expressed in pIR1NEO vector, and immunofluorescence assays showed that the tagged CAT mutant remained in the mitochondrion like WT (Fig 6D). However, when subjected to plasmid shuffling only 3 % of the 'dim' cells grew out, vs 79% for 'bright' cells (Fig 6C). Subsequent tests of the 'dim' survivors showed they still retained the WT *FUT1* plasmid (Fig. 6C).

These data suggested that CAT-MUT was unable to support *Leishmania* growth. Again, two controls strongly support this interpretation. First, western blot analysis showed that the level of CAT mutant expression within *Leishmania* was comparable to that of a tagged WT FUT1, relative to an H2A loading control (Fig. 4B). As expected, the size of CAT-MUT-HA was similar to WT FUT1-HA, indicating that it was similarly cleaved during import (Fig. 4B). Secondly, we expressed and purified the CAT mutant protein from *E. coli*, and assayed FUT activity. While the behavior and yield during purification of this enzyme were similar to the WT and MTP mutants, the CAT-MUT only retained less than 10% of WT activity, very close to the background of this assay (Fig. 6E).

Collectively, these data argue that expression of an enzymatically active mitochondrion fucosyltransferase is required for *Leishmania* viability.

**Recovery of a rare  $\Delta fut1^S$  mutant by plasmid segregation in rich medium.** The segregation tests above yielding no *FUT1*-null cells were performed in standard *Leishmania* M199 media (Fig. 2). Reasoning that a richer media might spare mitochondrial deficiencies arising from *FUT1* loss, we repeated this experiment several times using a richer medium, Schneider insect medium. In multiple experiments collectively screening more than 1000 cells, few “dim” cells survived as before (Fig 7B), even after extended incubations. However, in just one experiment a ‘dim’ clone was recovered which completely lacked *FUT1* by PCR tests (Fig. 7A-C). When both WT and the sole *fut1*-null mutant (here termed  $\Delta fut1^S$ ) were inoculated into fresh media, WT cells doubled after about 8 h, while  $\Delta fut1^S$  increased slowly in cell number for the first 2 weeks, after which it grew somewhat more rapidly and eventually reached similar cell density as WT (Fig. 7D). This pattern of very slow initial growth repeated in subsequent passages, although after extended passage the growth increased somewhat. The growth defect primary



$\Delta fut1^S$  could be fully restored by restoration of FUT1 expression (Fig. 7D), as could all other defects described below.

**$\Delta fut1^S$  showed ultrastructural and functional mitochondrial changes.** Transmission EM of  $\Delta fut1^S$  revealed changes in the ultrastructure of mitochondria, with swelling and bloated cristae (Fig. 8A), often containing dark electron dense aggregates, similar to that seen previously in disrupted cristae associated with dysfunctional mitochondria (53) The kDNA network showed alterations in size, in  $\Delta fut1^S$  decreasing 80% in length while increasing 12% in thickness relative to WT (Figs. 8B, S6). DAPI staining to reveal nuclear and kinetoplast DNA revealed that while WT parasites mostly showed a typical 1 kinetoplast – 1 nuclei (1K1N) pattern (54) only 42% of  $\Delta fut1^S$  were 1K1N, with 39% 1K2N; remarkably, 18% lost kDNA entirely (0K1N; Fig 8C, D). Few abnormalities were observed in the ultrastructure of other organelles such as the nucleus, endoplasmic reticulum, flagellum, and acidocalcisomes (Fig. 8A,B).

We assessed the mitochondrial membrane potential ( $\Delta\Psi_m$ ) of  $\Delta fut1^S$  using tetramethylrhodamine ethyl ester (TMRE), a cationic lipophilic dye that whose accumulation depends on mitochondrial membrane potential. Logarithmic phase  $\Delta fut1^S$  incubated with TMRE showed only 36% of the WT fluorescence (Fig 8E), which returned to normal upon restoration of *FUT1* (Fig. 8E, panel labelled ‘untreated’). As a control, cells were treated with the protonophore carbonyl cyanide p-trifluoromethoxy-phenylhydrazone (CCCP) to induce loss of mitochondrial membrane potential, which yielded greatly decreased TMRE fluorescence (Fig. 8E, panel labelled CCCP). Thus, loss of *FUT1* results in a profound mitochondrial dysfunction.

**Efforts to detect potential *FUT1*-dependent products in *Leishmania major*.** We surveyed unsuccessfully for *FUT1*-dependent products within the parasite mitochondrion, comparing WT and  $\Delta fut1^S$  parasites. No mitochondrial specific-labelling was observed using with fluorescent

lectins from *Aleuria aurantia* (AAL), *Ulex europaeus* (UEA) or Isolectin B4 (IB4) (55), or with antisera to anti-blood group antigen H type 1 (56) or anti O-Fuc $\beta$ 1-3Glc (L. Zhang and L. Mahal, personal communication). For both lectins and antibodies, often labelling outside of the mitochondrion was observed, possibly arising from one of the other secretory pathway glycosyltransferases (Table 1). Bioorthogonal labelling with 6-alkynyl fucose showed no differences, although labelling was seen in a region in the vicinity of the Golgi/flagellar pocket in both. Such labelling, was absent in the  $\Delta lpg2^-$  mutant lacking the Golgi GDP-Man/L-Fuc/D-Arap transporter (57-59), suggesting that 6-alkynyl fucose had been activated to GDP-6-alkynyl-Fuc and trafficked to the secretory pathway for use by FUTs therein (Table 1). The significance of these negative findings is addressed below.

## **Discussion**

Previous studies have shown that GDP-Fucose synthesis is essential in trypanosomatids, yet for *Leishmania* and *Trypanosoma brucei* fucosylated molecules that might account for this requirement remained unknown. We reasoned that identification of essential fucosyltransferase(s) and characterization of their substrate specificities would better inform our search for the postulated essential fuco-conjugates. Given the structural similarity of L-Fucose and D-arabinopyranose and the tendency of enzymes using either substrate (or their activated GDP derivatives) to accept the other, we searched in *Leishmania* genomes for proteins showing relationship to diverse collection of prokaryotic and eukaryotic fucosyl- or D-arabinosyl transferases (Table 1). Four candidates were predicted to be targeted to the secretory pathway, as typical for most parasite glycosyltransferases. *SCA1* and *SCA2* encoded transferases mediating developmentally regulated side-chain D-arabinopyranosylation of LPG within the Golgi apparatus, and unlikely to be essential given that LPG is not (15). The role(s) of *SCA1* and

*FUT2* are unknown (Table 1), however, both genes could be readily deleted with little apparent consequence *in vitro* (Figs S1, S2). Amongst possible roles could be D-Arap modification of GPIs (60), especially as GPIs are not required for survival (12).

*FUT1* in contrast was conserved in both African and South American trypanosomes, and uniquely, was predicted and then experimentally confirmed to be targeted exclusively to the parasite mitochondrion, most likely within the lumen (Figs. 1, 3). By plasmid segregation tests, *FUT1* appeared to be essential for normal growth (Fig. 2), and as discussed further below, clearly encodes a fucosyl-transferase. As mitochondrial glycosyltransferases are uncommon, we used a ‘plasmid shuffle’ assay to test whether mitochondrial localization was required by the parasite, examining *FUT1*s with mutated or blocked mitochondrial targeting sequences. Disruption of mitochondrial targeting was found as expected, but these were unable to satisfy the WT *FUT1* requirement (Fig. 6). We similarly explored whether the *FUT1* catalytic activity was required for growth, mutating conserved putative active site residues, and again, the mutant enzyme could not satisfy the *FUT1* requirement (Fig. 6). Importantly, all mutant *FUT1* proteins were expressed at levels comparable to WT *in vivo* (Fig. 4B), and *in vitro* assays of recombinant enzymes showed similar activities for the WT and mitochondrial targeting mutants, while the catalytic mutant showed near-background activity (Fig. 6E). These data established that both mitochondrial localization and catalytic activity were required for essential *FUT1* function.

One advantage of the plasmid segregation test for essentiality is that it allows tests of many more events than typical transfection based approaches (42). In standard media we tested more than 200 events (Fig. 7), and once *FUT1*’s mitochondrial role was recognized, we repeated these studies in richer media potentially sparing mitochondrial function. However despite testing more than 1000 estimated events, we were able to obtain only a single mutant completely lacking

*FUT1* entirely ( $\Delta fut1^S$ ; Figs. 7, 8). Notably  $\Delta fut1^S$  displayed exactly the phenotypes expected for a dysfunctional mitochondrial mutant, including slow growth; structural alterations of cristae, mitochondrial inclusions and abnormalities; alterations and even loss of kinetoplast DNA network; and greatly decreased mitochondrial membrane potential ( $\Delta\Psi_m$ ; Figs. 7, 8). Importantly, restoration of *FUT1* expression ( $\Delta fut1^S/+FUT1$ ) completely restored these defects back to WT. This raises the question as to why  $\Delta fut1^S$  was so rare; one explanation is that it bears a second site compensating mutation, albeit one unable to restore normal mitochondrial function. Future studies will address this possibility.

Thus, cell biological, genetic manipulation and the severe mitochondrial dysfunction of a  $\Delta fut1^S$  mutant all establish the localization and critical functionality of *FUT1* within the parasite mitochondrion. The questions now becomes what is the natural *FUT1* acceptor(s) therein, what are the products ultimately requiring *FUT1* synthesis, and what role do they play in essential mitochondrial biology? Remarkably, despite knowledge of essential GDP-Fucose synthesis (30-32), and extensive work characterizing parasite glycoconjugates since the early 1980s, few candidate fucosylated molecules have been found in any *Leishmania* species, and none in *L. major*. *L. donovani* expresses a mannose-fucose conjugate whose structure has not been definitively established (33), and several *L. donovani* proteins exhibited MS/MS signatures suggestive of fucosylation (34). Two were mitochondrial HSPs, peptides of which could be fucosylated by *FUT1* *in vitro* (Figs. 5B, S5). However in a global proteomic screen identifying nearly 7000 unique proteins, or 80% of the predicted proteome (61), we were unable to identify signs of protein–O-fucose in *L. major* (one caveat is that complex or atypical structures would not have been detected by the MS methodology used). Similarly, comparisons of WT and  $\Delta fut1^S$  using a variety of reagents specific for fucoconjugates were uninformative, as was biorthogonal

labelling with 6-alkynyl fucose. Failure to detect a mitochondrial product might signify a) products below the detection limits, b) inability of modified fucose derivatives such as 6-alkynyl fucose to be properly transported, activated or resist degradation within the mitochondrion (although some data suggested this could occur in the secretory pathway), or c) further incorporation and/or metabolism of fucose to forms not recognizable by the methods used here. A variety of fucose modifications have been described in prokaryotes, and the internal fucose within the SKP1 pentasaccharide D-Gal $\alpha$ 1-6-D-Gal $\alpha$ 1-L-Fuc $\alpha$ 1-2-D-Gal $\alpha$ 1-3GlcNAc of single-celled eukaryotes is not recognized by lectins or antibodies tested here (62). Studies searching for the cellular FUT1-dependent products in *T. brucei* have been similarly unrequited (1). Future studies will be necessary to resolve the nature of the GDP-Fucose and *FUT1*-dependent product(s) in trypanosomatids, which genetic and biochemical data strongly predict must nonetheless exist.

We did not deeply explore the glycan acceptor specificity of LmjFUT1, with the best acceptor being LNB and little activity with others tested (Fig. 5B). The presence of significant GDP-Fuc hydrolysis with all substrates tested may be a sign that the native acceptor moiety has yet to be identified (Fig. 5). More extensive studies with the TbFUT1 showed a preference for lac-N-biose and the  $\beta$ -methyl glycoside of lac-N-biose, again typically accompanied by significant background hydrolysis (1). The strong homology between these two species enzymes and the ability of *TbFUT1* to satisfy the *Leishmania FUT1* requirements (Fig. 5C;(1)) suggests that biologically relevant glycan specificities may be similar. While two substrates for mammalian protein O-fucosyltransferase were inactive with LmjFUT1, two peptides predicted to be fucosylated in *L. donovani* functioned as acceptors, and MS/MS of the one tested confirmed

fucosylation (Figs. 5B, S5). Thus LmjFUT1 is unusual in its ability to fucosylate a diverse array of substrates *in vitro*.

While intra-mitochondrial glycosylation is uncommon, that mediated by the mitochondrial isoform of the mammalian O-GlcNAc transferase has received considerable attention (63, 64). Proteomic surveys have revealed approximately 100 O-GlcNAc modified mitochondrial proteins (65-67), mostly encoded by nuclear genes raising the possibility of glycosylation prior to mitochondrial import (68). However, to date no mechanistic studies establish that glycosylated proteins can be imported into mitochondria, while several proteins encoded by mitochondrial DNA are glycosylated (thus rendering cytoplasmic isolation unlikely), and mitochondrial transporters able to transport UDP-GlcNAc have been identified (69) (70) (67) (66), in support of the intra-mitochondrial glycosylation paradigm. Importantly, O-GlcNAc modifications of mitochondrial proteins have been postulated to play key roles in mitochondrial energy metabolism and function (66, 67), and an analogous role could be imagined for intra-mitochondrial fucosylation in *Leishmania*. Potentially, trypanosomatid mitochondrial FUT1s may offer a facile system in the future for probing mitochondrial glycosylation in a setting uncomplicated by multiple isoforms targeted to diverse compartments, and its essentiality renders it an attractive target for chemotherapy of trypanosomatid parasites.

## **Acknowledgements.**

We thank Robert Haltiwanger for providing EGFR and TSR substrates, L. Mahal and L. Zhang for anti-Glc-Fuc antibody, Giulia Bandini for discussions and encouragement, Wandy Beatty of the Molecular Microbiology Imaging Facility for transmission and immune-electron microscopy, I.C. Almeida and S. Portillo for providing IB4 lectin, and R.R. Townsend, P.E. Gilmore, and

R.W.Sprung of the Washington University Proteomics Shared Resource for performing mass spectrometric analysis, supported through grants NCATS UL1 TR000448, NIGMS P41 GM103422 and NCI P30 CA091842. This work was supported by NIH grants AI31078 and AI29646 to SMB, an administrative supplement to AI31089 to GP, Berg Postdoctoral Fellowships from the Dept. of Molecular Microbiology (SM, HG), and a Wellcome Investigator Award (101842/Z/13/Z) to MAJF.

## **Experimental Procedures.**

***Leishmania* culture and transfection.** *L. major* strain FV1 (MHOM/IL/80/Friedlin) was grown at 26°C in M199 medium (U.S. Biologicals) containing 10% heat-inactivated fetal bovine serum and other supplements and transfected by electroporation using a high voltage protocol as described (71, 72). Following transfection, cells were allowed to grow for 16-24 h in M199 medium and then plated on semisolid media containing 1% Nobel agar (Fisher) and appropriate selective drugs (30 µg/ml puromycin, 100 µg/ml nourseothricin, 10 µg/ml phleomycin, and 10 µg/ml G418). Individual colonies were picked and grown in liquid medium in same drug concentration as used in plates. Clones were maintained in selective medium for less than 10 passages before use, prior to which selective drug was removed for one passage.

**Molecular constructions and primers.** Molecular constructs are described in detail in Table S1 and oligonucleotide primers are described in Table S2. Molecular constructs were confirmed by restriction mapping, sequencing, and functional testing.

### **Homologous replacement of chromosomal FUTs, often in the presence of ectopically**

**expressed FUTs** (Fig. 2). For *FUT1*, pXNGPHLEO-*FUT1* (B7073) was first transfected to LmFV1 WT, yielding WT/+pXNGPHLEO-*FUT1*. The presence of plasmid was confirmed by

PCR and FACS analysis for the presence of *PHLEO* and GFP markers, respectively. The targeting fragments *FUT1::SAT* and *FUT1::PAC* were liberated from pGEM-*FUT1-SAT* (B7081) or pGEM-*FUT1-PAC* (B7079) by digestion with BamHI and HindIII, and then sequentially transfected into WT/+pXNGPHLEO-*FUT1* with nourseothricin or puromycin selection, to generate  $\Delta fut1::PAC/\Delta fut1::SAT$  /+pXNGPHLEO-*FUT1* (referred to as  $\Delta fut1^{\square}$  /+pXNGPHLEO-*FUT1*). For plasmid shuffling experiments,  $\Delta fut1^{\square}$  /+pXNG-*FUT1* was further transfected with episomal pIR1NEO (B6483) into which test *FUT1* genes had been inserted (Table S1).

A similar protocol was followed for *FUT2*, substituting pXNGPHLEO-*FUT2* and targeting fragments *FUT2::HYG* and *FUT2::PAC* (Table S1, Fig. S2), to generate  $\Delta fut2::PAC/\Delta fut2::SAT$  /+pXNGPHLEO-*FUT2*, hereafter termed  $\Delta fut2^{\square}$  /+pXNGPHLEO-*FUT2*. Deletion of both chromosomal copies of *SCAL* was accomplished by successive introduction of targeting fragments *SCAL::HYG* and *SCAL::BSD* (Table S1; Fig. S1), yielding  $\Delta scal::HYG/\Delta scal::BSD$ , hereafter termed  $\Delta scal^{\square}$ .

**Plasmid segregation or shuffling by single cell sorting.**  $\Delta fut1^{\square}$  parasites bearing pXNGPHLEO-*FUT1* alone (segregation) or additionally expressing test *FUT1* sequences from pIR1NEO (shuffling) were subjected to flow cytometry and single cell cloning to recover GFP+ cells (bright) or GFP-negative (dim), the latter representing potential segregants or ‘shuffles’. Prior to flow cytometry, cells were incubated in M199 medium without phleomycin for 24 h. washed with phosphate-buffered saline (PBS), and filtered through CellTrics 50  $\mu$ m filters to remove clumps (particles). Single cell sorting of GFP “bright” or “dim” cells was performed with appropriate gates ((Fig. 2C illustrates typical gating settings) using a Dako MoFlo high-



speed cell sorter, with single cells selected by stringent gating on forward and side scatter parameters. Single cells were placed into individual wells of 96-well plates, each containing 150  $\mu$ l M199 medium or Schneider medium. Plates were incubated at 26° C for at least 2 weeks and parasite growth assessed.

**Subcellular localization of FUT1.** Log phase parasites expressing FUT-HA were collected by centrifugation and resuspended in DMEM media containing Mitotracker Red CMXRos (Invitrogen; 50 nM) for 15 min. Parasites were then washed in DMEM and fixed in 4% paraformaldehyde (in PBS) for 5 min, washed in PBS, and deposited on coverslips by centrifugation. The coverslips were then incubated in blocking buffer (PBS containing 0.1% (v/v) Triton-X-100 and 5% (v/v) normal goat sera) for 30 min prior to staining with a rabbit anti-HA polyclonal antibody (Invitrogen, diluted 1:100 in blocking buffer) for 1 h. Following extensive washing in PBS, the coverslips were then stained with an Alexafluor488 goat anti-rabbit antibody (Invitrogen, diluted 1:1000 in blocking buffer).

**Immunoelectron Microscopy.** Parasites were fixed in 4% paraformaldehyde/0.05% glutaraldehyde (Polysciences Inc., Warrington, PA) in 100 mM PIPES/0.5 mM MgCl<sub>2</sub>, pH 7.2 for 1 hr at 4°C. Samples were then embedded in 10% gelatin and infiltrated overnight with 2.3 M sucrose/20% polyvinyl pyrrolidone in PIPES/MgCl<sub>2</sub> at 4°C. Samples were trimmed, frozen in liquid nitrogen, and sectioned with a Leica Ultracut UCT cryo-ultramicrotome (Leica Microsystems Inc., Bannockburn, IL). 50 nm sections were blocked with 5% FBS/5% NGS and subsequently incubated with anti-HA antibody followed by streptavidin conjugated to 15 nm colloidal gold (BB International, Cardiff, UK). Sections were washed in PIPES buffer followed by a water rinse, and stained with 0.3% uranyl acetate/2% methyl cellulose. Samples were viewed with a JEOL 1200EX transmission electron microscope (JEOL USA Inc., Peabody,

MA). Parallel controls omitting the biotinylated agglutinin were consistently negative at the concentration of streptavidin used in these studies. For quantitation, images from sections intersecting the mitochondrion, cytosol and nucleus were chosen; for each beads were counted in each compartment, whose area was measured using Image J. The bead counts were normalized to the relative area of each compartment measured across all sections (1:3:2 for mitochondrion: cytosol: nucleus).

**Transmission electron microscopy,** *L. major* cells were fixed with 4% paraformaldehyde (PFA) and 2% glutaraldehyde in 0.1 M phosphate buffer (pH 7.4) for 4 h at room temperature (RT). The samples were then washed in 0.1 M phosphate buffer, postfixed in 2% OsO<sub>4</sub>, and encapsulated in agarose. This was followed by dehydration in ascending grades of ethanol, infiltration, embedding in an Epon 812-araldite plastic mixture, and polymerization at 60°C for 24 h. Ultrathin sections (50 to 70 nm) were obtained using an ultramicrotome (Leica Ultracut UCT; Leica Microsystems GmbH, Wetzlar, Germany) and picked up onto 200 mesh copper grids. The sections were double stained with uranyl acetate and lead citrate and observed under a FEI Tecnai-12 twin transmission electron microscope equipped with a SIS MegaView II CCD camera at 80 kV (FEI Company, Hillsboro, OR, USA).

### **Measurement of mitochondrial membrane potential ( $\Delta\Psi_m$ ) in live *Leishmania***

**promastigotes.** Tetramethylrhodamine ethylester perchlorate (TMRE, Molecular Probes, Inc., Eugene OR, USA) was prepared at a concentration of 1 mM in DMSO and stored at -20°C. *L. major* promastigotes were washed once in PBS, resuspended at  $2 \times 10^6$  cells/ml in PBS containing 100 nM TMRE, incubated for 15 min at room temperature, and analyzed by flow cytometry on the FL2-H channel. Baseline TMRE was recorded and expressed as mean fluorescence in arbitrary units (a.u.). Subsequently, carbonyl cyanide m-chlorophenylhydrazone (CCCP, Sigma)

was added to the cells (300 mM final concentration) and TMRE fluorescence was measured at various times up to 60 min.

**Protein expression and purification.** GST- and His-tagged recombinant *FUT1* constructs were transformed to BL21 (DE3) *E. coli* strain. Cells were grown at 37 °C until OD<sub>600</sub> reached about 0.5, when 50 μM isopropyl-β-D-thiogalactopyranoside (IPTG) and incubated at 15 °C for 16 h. Cells were harvested by centrifugation and incubated 1 hr on ice in 10 mM TrisHCl, pH 7.5, 0.15 M NaCl, 1 mM DTT, 1 mg/ml lysozyme (Sigma) with EDTA-free Complete Protease Inhibitor Tablet (Roche), before disrupting by sonication. The soluble fraction was obtained by centrifugation at 17,000 × g, 4 °C for 30 min. For GST-tagged protein purification, the supernatant was incubated with Glutathione Sepharose 4B resin (GE Healthcare) for 1 h at 4 °C. The bound protein was washed with 10 bed columns of 10 mM TrisHCl, 0.15 M NaCl followed by elution using 50 mM Tris, 50 mM reduced glutathione, 0.15 M NaCl, 5 mM DTT, 0.1% Triton X-100, pH 8.5. For His-tagged PTR1-FUT1, supernatant was incubated with Ni-NTA resin (Qiagen) for 1 h at 4 °C. The bound protein was washed with 10 bed columns of 10 mM TrisHCl, pH 8.0, 0.15 M NaCl, 50 mM imidazole followed by elution using 10 mM TrisHCl, 0.15 M NaCl, 250 mM imidazole, 5 mM DTT, 1% Triton X-100. The yield of the recombinant protein was estimated by Qubit 2.0 (Invitrogen) and the degree of purification by SDS-PAGE analysis.

**Fucosyltransferase activity assays.** Enzymatic activity was determined by GDP-Glo bioluminescent GDP detection assay with GDP-Fucose (Promega Corporation, Madison, WI USA). Aliquots of 3 μg of the affinity purified recombinant proteins were incubated with 600 μM GDP-Fuc, 10 mM acceptor (β-D-Gal-(1→3)-D-GlcNAc; lac-N-biose or LNB), N-acetyllactosamine (LacNAc), β-Galactose, or Galβ1,3GalNAc) or 1.7 mM peptide from

mHSP70 or mHSP60 (EWKYVSDAEKE or SKELESLANDS, respectively; Peptide2go, Manassas, VA) in 20 mM sodium phosphate, 25 mM KCl, 5 mM MgCl<sub>2</sub>, pH 6.0 or 40 μM acceptor (TSR or EGF repeats, provided by R. Haltiwanger, U. Ga.) in 50 mM imidazole-HCl (pH 7.0), 50 mM MnCl<sub>2</sub>, in a final volume of 25 μl for 5 min at 37 °C. Reactions were terminated by boiling for 5 min before 25 μl of GDP detection reagent was added and incubated at RT for 1 h. Luminescence was recorded using a Microplate Luminometer or IVIS imaging system (Perkin Elmer, IL)

For peptide mass spectrometry, a reaction mix of LmFUT1 with the mHSP70 peptide above was acidified with trifluoroacetic acid (TFA) to a final concentration of 1%. Peptides were bound to porous graphite carbon micro-tips (Glygen) (PMID 22338125) and were eluted with 60% acetonitrile (AcN) in 0.1% TFA, and dried in a Speed-Vac after adding TFA to 5%. and dissolved in 2.7 μL of 1% formic acid. Samples were analyzed by LC-MS, using an 75 μm i.d. × 50 cm Acclaim<sup>®</sup> PepMap 100 C18 RSLC column (Thermo-Fisher Scientific) equilibrated with 1% formic acid and a gradient from 1% formic acid to acetonitrile/1% formic acid and a Q Exactive<sup>™</sup> Quadrupole-Orbitrap<sup>™</sup> mass spectrometer. The acquisition of the HCD spectra were triggered from the values corresponding to the expected charge states of the doubly and triply charged protonated molecular ions for the unmodified and fucosylated EWKYVSDAEKE peptide ( $m/z$  = 692.325, 461.888, 765.354 and 510.572). The MS1 scan was acquired in the Orbitrap mass analyzer with an AGC target value of 3e6 over a scan range of  $m/z$  = 150 – 2000 at a mass resolving power set to 70,000 (at  $m/z$  = 200). The unprocessed LC-MS data were analyzed using SKYLINE (version 3.6.9).

### **Enzymatic assay of HA-tagged FUT1 expressed in *Leishmania* and bound to anti-HA beads.**

Assays and resolution of products by HPTLC were performed as described (1). Briefly,

*Leishmania* lysates were incubated with Anti-HA-beads in the presence of in the presence of 1  $\mu$ Ci GDP[<sup>3</sup>H]Fuc (American Radiochemicals) and 1 mM LNB in 50 mM TrisHCl, 25 mM KCl, pH 7.2 in a final volume of 25  $\mu$ l for 2 h at 37°C. Reactions were then cooled on ice, water added to 200  $\mu$ l final volume, and desalted on a mixed-bed column made of 100  $\mu$ l each Chelex100 (Na<sup>+</sup>) over Dowex AG50 (H<sup>+</sup>) over Dowex AG3 (OH<sup>-</sup>) over QAE-Sephadex A25 (OH<sup>-</sup>). The products were freeze dried, resuspended in water and dried in a Speedvac concentrator, and dissolved in 20% 1-propanol (HiPerSolv Chromanorm, VWR). They were then separated by HPTLC using 10 cm Si-60 plates (Merck) and separated using 1-propanol : acetone : water 9:6:4 (v:v:v) as mobile phase. Plates were sprayed with Enhance<sup>®</sup> (PerkinElmer) and the materials visualized by fluorography at -80°C using Biomax XAR film (Kodak) with an intensifying screen.

**Lectins, antibodies, and 6-alkynyl labelling.** For lectin-mediated imaging, WT FV1,  $\Delta$ *fut1*<sup>s</sup>, or  $\Delta$ *lpg2*<sup>-</sup> parasites were grown in the presence of 100  $\mu$ M to 1mM L-fucose. After 3 days, 2 x 10<sup>6</sup> parasites were washed, fixed onto glass coverslips, and incubated with 17  $\mu$ g/mL fluorescein labeled *Aleuria aurantia* lectin (AAL; Vector Laboratories FL-1319), 20  $\mu$ g/mL *Ulex Europaeus* Agglutinin I (UEAI; Vector Laboratories FL-1061), or 5 $\mu$ g/mL *Griffonia simplicifolia* IB4-Alexa 488 lectin (Thermo Fisher; kindly provided by Igor Almeida) at room temperature in the dark for one hour. For antibody-mediated imaging, fixed parasites were incubated with 5 $\mu$ g/mL Blood Group Antigen H (O) Type 1 monoclonal antibody (Invitrogen 13-9810-82), washed three times with 1x PBS and incubated with 1:100  $\alpha$ -mouse secondary antibody conjugated to Alexa 488 (Invitrogen, A11029) each for 1 hour at room temperature. All imaging was performed using a Zeiss LSM880 Confocal Laser Scanning Microscope with Airyscan.

For biorthogonal labeling, parasites were inoculated into M199 medium at  $1 \times 10^5$ /mL (WT or  $\Delta lpg2^-$ ) or  $3.8 \times 10^6$ /ml ( $\Delta fut1^s$ ) and grown for three days in the presence/absence of  $100 \mu\text{M}$  alkyne fucose (Invitrogen C10264), after which parasites were washed in PBS. Prior to confocal microscopy, click labeling was done using azide-488 (Invitrogen A10266) and the Click-iT™ Cell Reaction Buffer Kit (Invitrogen C10269). For western blotting,  $1 \times 10^6$  labelled parasites were lysed 10 mM Tris pH7.5, 150 mM NaCl, 1% NP-40, and Roche cOmplete EDTA free proteinase inhibitor cocktail (11836170001). Click labeling with biotin azide (Invitrogen B10184) was performed using the Click-iT™ Protein Reaction Buffer Kit (Invitrogen C10276). Proteins were separated using a 10% SDS-PAGE gel and transferred onto a PVDF membrane which was subsequently probed with 1:5,000 fluorescent streptavidin probe (Li-Cor 925-32230). Western blotting with anti-GlcFuc antibody (kindly provided by Lara Mahal) was performed with lysed samples from WT,  $\Delta fut1^s$ , or  $\Delta lpg2^-$  parasites grown with or without 1mM fucose as described above; a positive control of 336 ng BSA-GlcFuc was included. The membrane was incubated in using  $1 \mu\text{g/mL}$  anti-GlcFuc for 1 hour at room temperature, washed, and probed with 1:5,000 donkey anti-chicken secondary antibody for 1 hour at room temperature (Li-Cor 925-68075). All western blot imaging was performed using the Li-Cor system.

## REFERENCES

1. G. Bandini *et al.*, An essential, kinetoplastid-specific GDP-Fuc:  $\beta$ -D-Gal  $\alpha$ -1,2-fucosyltransferase is located in the mitochondrion of *Trypanosoma brucei* *bioRxiv* **10.1101/726117v1**, 726117v726111 (2021).
2. J. Alvar *et al.*, Leishmaniasis worldwide and global estimates of its incidence. *PLoS One* **7**, e35671 (2012).
3. D. M. Pigott *et al.*, Global distribution maps of the leishmaniasis. *Elife* **3** (2014).

4. A. L. Banuls *et al.*, Clinical pleiomorphism in human leishmaniasis, with special mention of asymptomatic infection. *Clin Microbiol Infect* **17**, 1451-1461 (2011).
5. T. Naderer, M. J. McConville, Intracellular growth and pathogenesis of *Leishmania* parasites. *Essays Biochem* **51**, 81-95 (2011).
6. M. J. McConville, K. A. Mullin, S. C. Ilgoutz, R. D. Teasdale, Secretory pathway of trypanosomatid parasites. *Microbiol Mol Biol Rev* **66**, 122-154; table of contents (2002).
7. S. C. Ilgoutz, M. J. McConville, Function and assembly of the *Leishmania* surface coat. *International journal for parasitology* **31**, 899-908 (2001).
8. T. Ilg, Proteophosphoglycans of *Leishmania*. *Parasitology today (Personal ed)* **16**, 489-497 (2000).
9. S. M. Beverley, S. J. Turco, Lipophosphoglycan (LPG) and the identification of virulence genes in the protozoan parasite *Leishmania*. *Trends Microbiol* **6**, 35-40 (1998).
10. A. A. Capul, T. Barron, D. E. Dobson, S. J. Turco, S. M. Beverley, Two functionally divergent UDP-Gal nucleotide sugar transporters participate in phosphoglycan synthesis in *Leishmania major*. *The Journal of biological chemistry* **282**, 14006-14017 (2007).
11. K. Zhang, J. D. Bangs, S. M. Beverley, Sphingolipids in parasitic protozoa. *Adv Exp Med Biol* **688**, 238-248 (2010).
12. R. Zufferey *et al.*, Ether phospholipids and glycosylinositolphospholipids are not required for amastigote virulence or for inhibition of macrophage activation by *Leishmania major*. *The Journal of biological chemistry* **278**, 44708-44718 (2003).
13. G. F. Spath *et al.*, Persistence without pathology in phosphoglycan-deficient *Leishmania major*. *Science (New York, N.Y)* **301**, 1241-1243 (2003).
14. S. J. Turco, G. F. Späth, S. M. Beverley, Is lipophosphoglycan a virulence factor? A surprising diversity between *Leishmania* species. *Trends in parasitology* **17**, 223-226. (2001).
15. G. F. Spath *et al.*, Lipophosphoglycan is a virulence factor distinct from related glycoconjugates in the protozoan parasite *Leishmania major*. *Proceedings of the National Academy of Sciences of the United States of America* **97**, 9258-9263 (2000).
16. D. L. Sacks *et al.*, The role of phosphoglycans in *Leishmania*-sand fly interactions. *Proceedings of the National Academy of Sciences of the United States of America* **97**, 406-411 (2000).



17. M. Lazaro-Souza *et al.*, Leishmania infantum Lipophosphoglycan-Deficient Mutants: A Tool to Study Host Cell-Parasite Interplay. *Front Microbiol* **9**, 626 (2018).
18. L. H. Franco, S. M. Beverley, D. S. Zamboni, Innate immune activation and subversion of mammalian functions by *Leishmania* lipophosphoglycan. *J Parasitol Res* **2012**, 165126 (2012).
19. A. A. Capul, S. Hickerson, T. Barron, S. J. Turco, S. M. Beverley, Comparisons of mutants lacking the Golgi UDP-galactose or GDP-mannose transporters establish that phosphoglycans are important for promastigote but not amastigote virulence in *Leishmania major*. *Infection and immunity* **75**, 4629-4637 (2007).
20. D. Sacks, S. Kamhawi, Molecular aspects of parasite-vector and vector-host interactions in leishmaniasis. *Annu Rev Microbiol* **55**, 453-483 (2001).
21. S. Kamhawi *et al.*, A role for insect galectins in parasite survival. *Cell* **119**, 329-341 (2004).
22. S. M. Beverley, D. E. Dobson, Flypaper for parasites. *Cell* **119**, 311-312 (2004).
23. D. E. Dobson *et al.*, *Leishmania major* survival in selective *Phlebotomus papatasi* sand fly vector requires a specific SCG-encoded lipophosphoglycan galactosylation pattern. *PLoS pathogens* **6**, e1001185 (2010).
24. M. Goswami, D. E. Dobson, S. M. Beverley, S. J. Turco, Demonstration by heterologous expression that the *Leishmania* SCA1 gene encodes an arabinopyranosyltransferase. *Glycobiology* **16**, 230-236 (2006).
25. D. E. Dobson, L. D. Scholtes, P. J. Myler, S. J. Turco, S. M. Beverley, Genomic organization and expression of the expanded SCG/L/R gene family of *Leishmania major*: internal clusters and telomeric localization of SCGs mediating species-specific LPG modifications. *Molecular and biochemical parasitology* **146**, 231-241 (2006).
26. D. E. Dobson *et al.*, Functional identification of galactosyltransferases (SCGs) required for species-specific modifications of the lipophosphoglycan adhesin controlling *Leishmania major*-sand fly interactions. *The Journal of biological chemistry* **278**, 15523-15531 (2003).
27. D. E. Dobson *et al.*, Identification of genes encoding arabinosyltransferases (SCA) mediating developmental modifications of lipophosphoglycan required for sand fly transmission of *leishmania major*. *The Journal of biological chemistry* **278**, 28840-28848 (2003).
28. B. J. Mengeling, S. J. Turco, Microbial glycoconjugates. *Curr Opin Struct Biol* **8**, 572-577 (1998).



29. M. J. Coyne, B. Reinap, M. M. Lee, L. E. Comstock, Human symbionts use a host-like pathway for surface fucosylation. *Science (New York, N.Y)* **307**, 1778-1781 (2005).
30. H. Guo *et al.*, Genetic metabolic complementation establishes a requirement for GDP-fucose in *Leishmania*. *The Journal of biological chemistry* **292**, 10696-10708 (2017).
31. D. C. Turnock, M. A. Ferguson, Sugar nucleotide pools of *Trypanosoma brucei*, *Trypanosoma cruzi*, and *Leishmania major*. *Eukaryotic cell* **6**, 1450-1463 (2007).
32. D. C. Turnock, L. Izquierdo, M. A. Ferguson, The de novo synthesis of GDP-fucose is essential for flagellar adhesion and cell growth in *Trypanosoma brucei*. *The Journal of biological chemistry* **282**, 28853-28863 (2007).
33. C. B. Palatnik de Sousa *et al.*, The FML (Fucose Mannose Ligand) of *Leishmania donovani*. a new tool in diagnosis, prognosis, transfusional control and vaccination against human kala-azar. *Rev Soc Bras Med Trop* **29**, 153-163 (1996).
34. D. Rosenzweig, D. Smith, P. J. Myler, R. W. Olafson, D. Zilberstein, Post-translational modification of cellular proteins during *Leishmania donovani* differentiation. *Proteomics* **8**, 1843-1850 (2008).
35. R. Breitling *et al.*, Non-pathogenic trypanosomatid protozoa as a platform for protein research and production. *Protein Expr Purif* **25**, 209-218 (2002).
36. V. Lombard, H. Golaconda Ramulu, E. Drula, P. M. Coutinho, B. Henrissat, The carbohydrate-active enzymes database (CAZy) in 2013. *Nucleic Acids Res* **42**, D490-495 (2014).
37. I. B. Wilson, N. O'Donnell, S. Allen, A. Mehlert, M. A. Ferguson, Typing of *Leishmania* lipophosphoglycans by electrospray mass spectrometry. *Molecular and biochemical parasitology* **100**, 207-215. (1999).
38. G. F. Spath, S. M. Beverley, A lipophosphoglycan-independent method for isolation of infective *Leishmania* metacyclic promastigotes by density gradient centrifugation. *Experimental parasitology* **99**, 97-103 (2001).
39. M. R. Edbrooke *et al.*, The alpha(1-3)-fucosyltransferases come of age. *Biochem Soc Trans* **25**, 880-886 (1997).
40. B. Ma, J. L. Simala-Grant, D. E. Taylor, Fucosylation in prokaryotes and eukaryotes. *Glycobiology* **16**, 158R-184R (2006).

41. J. C. Paulson, K. J. Colley, Glycosyltransferases. Structure, localization, and control of cell type-specific glycosylation. *The Journal of biological chemistry* **264**, 17615-17618 (1989).
42. S. M. Murta, T. J. Vickers, D. A. Scott, S. M. Beverley, Methylene tetrahydrofolate dehydrogenase/cyclohydrolase and the synthesis of 10-CHO-THF are essential in *Leishmania major*. *Molecular microbiology* **71**, 1386-1401 (2009).
43. S. G. Kim, D. H. Kweon, D. H. Lee, Y. C. Park, J. H. Seo, Coexpression of folding accessory proteins for production of active cyclodextrin glycosyltransferase of *Bacillus macerans* in recombinant *Escherichia coli*. *Protein Expr Purif* **41**, 426-432 (2005).
44. H. Zegzouti *et al.*, Homogeneous Detection of Glycosyltransferase Activities with Universal Bioluminescent Assays *Glycobiology* **26**, 1543 (2016).
45. L. Zhang *et al.*, *Helicobacter hepaticus* Hh0072 gene encodes a novel alpha1-3-fucosyltransferase belonging to CAZy GT11 family. *Glycobiology* **20**, 1077-1088 (2010).
46. Y. Luo, K. Koles, W. Vorndam, R. S. Haltiwanger, V. M. Panin, Protein O-fucosyltransferase 2 adds O-fucose to thrombospondin type 1 repeats. *The Journal of biological chemistry* **281**, 9393-9399 (2006).
47. Y. Wang *et al.*, Modification of epidermal growth factor-like repeats with O-fucose. Molecular cloning and expression of a novel GDP-fucose protein O-fucosyltransferase. *The Journal of biological chemistry* **276**, 40338-40345 (2001).
48. W. K. Huh *et al.*, Global analysis of protein localization in budding yeast. *Nature* **425**, 686-691 (2003).
49. T. Omura, Mitochondria-targeting sequence, a multi-role sorting sequence recognized at all steps of protein import into mitochondria. *J Biochem* **123**, 1010-1016 (1998).
50. Z. G. Levine *et al.*, Mammalian cell proliferation requires noncatalytic functions of O-GlcNAc transferase. *Proceedings of the National Academy of Sciences of the United States of America* **118** (2021).
51. M. Li *et al.*, Identification of a new alpha1,2-fucosyltransferase involved in O-antigen biosynthesis of *Escherichia coli* O86:B7 and formation of H-type 3 blood group antigen. *Biochemistry* **47**, 11590-11597 (2008).

52. T. Takahashi *et al.*, A sequence motif involved in the donor substrate binding by alpha1,6-fucosyltransferase: the role of the conserved arginine residues. *Glycobiology* **10**, 503-510 (2000).
53. J. L. Guler, E. Kriegova, T. K. Smith, J. Lukes, P. T. Englund, Mitochondrial fatty acid synthesis is required for normal mitochondrial morphology and function in *Trypanosoma brucei*. *Molecular microbiology* **67**, 1125-1142 (2008).
54. A. Ambit, K. L. Woods, B. Cull, G. H. Coombs, J. C. Mottram, Morphological events during the cell cycle of *Leishmania major*. *Eukaryotic cell* **10**, 1429-1438 (2011).
55. G. Valbuena, J. F. Madrid, F. Hernandez, F. J. Saez, Identification of fucosylated glycoconjugates in *Xenopus laevis* testis by lectin histochemistry. *Histochemistry and cell biology* **134**, 215-225 (2010).
56. M. Choo *et al.*, Characterization of H type 1 and type 1 N-acetylactosamine glycan epitopes on ovarian cancer specifically recognized by the anti-glycan monoclonal antibody mAb-A4. *The Journal of biological chemistry* **292**, 6163-6176 (2017).
57. H. Segawa, R. P. Soares, M. Kawakita, S. M. Beverley, S. J. Turco, Reconstitution of GDP-mannose transport activity with purified *Leishmania* LPG2 protein in liposomes. *The Journal of biological chemistry* **280**, 2028-2035 (2005).
58. K. Hong, D. Ma, S. M. Beverley, S. J. Turco, The *Leishmania* GDP-mannose transporter is an autonomous, multi-specific, hexameric complex of LPG2 subunits. *Biochemistry* **39**, 2013-2022 (2000).
59. D. Ma, D. G. Russell, S. M. Beverley, S. J. Turco, Golgi GDP-mannose uptake requires *Leishmania* LPG2. A member of a eukaryotic family of putative nucleotide-sugar transporters. *The Journal of biological chemistry* **272**, 3799-3805 (1997).
60. M. A. Wyder, D. Sul, E. S. Kaneshiro, The fatty acid and monosaccharide compositions of three neutral and three phosphorylated glycolipids isolated from *Leishmania donovani* promastigotes grown in a chemically defined medium. *The Journal of parasitology* **85**, 771-778 (1999).
61. G. Polanco, N. E. Scott, S. M. Beverley, A proteomic survey of the human parasite *Leishmania major*: a significant expansion of the known proteome provides perspectives on changes arising by deletion of the Golgi GDP-Man transporter *LPG2* or the mitochondrial fucosyltransferase *FUT1* *in preparation* (2021).

62. P. Teng-umnuay *et al.*, The cytoplasmic F-box binding protein SKP1 contains a novel pentasaccharide linked to hydroxyproline in Dictyostelium. *The Journal of biological chemistry* **273**, 18242-18249 (1998).
63. D. C. Love, J. Kochan, R. L. Cathey, S. H. Shin, J. A. Hanover, Mitochondrial and nucleocytoplasmic targeting of O-linked GlcNAc transferase. *Journal of cell science* **116**, 647-654 (2003).
64. J. A. Hanover *et al.*, Mitochondrial and nucleocytoplasmic isoforms of O-linked GlcNAc transferase encoded by a single mammalian gene. *Arch Biochem Biophys* **409**, 287-297 (2003).
65. E. Wulff-Fuentes *et al.*, The human O-GlcNAcome database and meta-analysis. *Sci Data* **8**, 25 (2021).
66. J. L. Sacoman, R. Y. Dagda, A. R. Burnham-Marusich, R. K. Dagda, P. M. Berninsone, Mitochondrial O-GlcNAc Transferase (mOGT) Regulates Mitochondrial Structure, Function, and Survival in HeLa Cells. *The Journal of biological chemistry* **292**, 4499-4518 (2017).
67. P. S. Banerjee, J. Ma, G. W. Hart, Diabetes-associated dysregulation of O-GlcNAcylation in rat cardiac mitochondria. *Proceedings of the National Academy of Sciences of the United States of America* **112**, 6050-6055 (2015).
68. A. R. Burnham-Marusich, P. M. Berninsone, Multiple proteins with essential mitochondrial functions have glycosylated isoforms. *Mitochondrion* **12**, 423-427 (2012).
69. Y. Hu *et al.*, Increased enzymatic O-GlcNAcylation of mitochondrial proteins impairs mitochondrial function in cardiac myocytes exposed to high glucose. *The Journal of biological chemistry* **284**, 547-555 (2009).
70. J. Ma *et al.*, O-GlcNAcome Profiling Identifies Widespread O-Linked beta-N-Acetylglucosamine Modification (O-GlcNAcylation) in Oxidative Phosphorylation System Regulating Cardiac Mitochondrial Function. *The Journal of biological chemistry* **290**, 29141-29153 (2015).
71. G. M. Kapler, C. M. Coburn, S. M. Beverley, Stable transfection of the human parasite *Leishmania major* delineates a 30-kilobase region sufficient for extrachromosomal replication and expression. *Molecular and cellular biology* **10**, 1084-1094 (1990).

72. K. A. Robinson, S. M. Beverley, Improvements in transfection efficiency and tests of RNA interference (RNAi) approaches in the protozoan parasite *Leishmania*. *Molecular and biochemical parasitology* **128**, 217-228 (2003).

**Table 1.**

Trypanosomatid L-Fucose/D-Arabinosylpyranose conjugates, precursors, and candidate transferases

Species	Fucose-conjugates	GDP-Fucose	D-Arap-conjugate	GDP-Arap	$\alpha$ 1,2 FUT (CAZY GT11)	$\alpha$ 1,3/4 FUT (CAZY GT10)	Fuc/ArapT (CAZY GT79)
<i>Leishmania major</i>	unknown	+	LPG	+	LmjF.01.0100 ( <i>LmjFUT1</i> )	LmjF.02.0330 ( <i>FUT2</i> )	LmjF.02.0220 ( <i>SCA1</i> )  LmjF.02.0180 ( <i>SCA2</i> )  LmjF.34.0510 ( <i>SCAL</i> )
<i>Trypanosoma brucei</i>	unknown	+	Not described	-	Tb927.9.3600 ( <i>TbFUT1</i> )	-	-
<i>Trypanosoma cruzi</i>	GP72	+	Not described	-	TcCLB.506893.90 TcCLB.508501.240	TcCLB509.233.40 TcCLB509437.90	-

## FIGURE LEGENDS

### **Figure 1. Comparison of mitochondrial *Leishmania major* FUT1 relative to related fucosyltransferases.**

Panel A. Overall organization of *Leishmania* FUT1 relative to mammalian or bacterial  $\alpha$ 1.2 fucosyltransferases. A schematized alignment depicting conserved motifs I-IV, the mitochondrial targeting peptide of LmjFUT1 (MTP, yellow) and the transmembrane domain of human FUT1 (TM, purple) relative to *E. coli* WBIQ is shown.

Panel B. Multiple sequence alignment of FUT1 and fucosyltransferases from *Trypanosoma brucei* (TbFUT1 from *T. brucei*), bacteria (EcWBIQ from *E. coli* O127) and mammals (human hsFUT1) were used for alignment. Identical or highly conserved residues are highlighted in black. Conserved fucosyltransferase motifs are marked by black boxes (40). The predicted mitochondrial peptide cleavage site is marked by an arrow. The predicated transmembrane domain for HsFUT1 is marked by a dash dot box

### **Figure 2. Plasmid segregation tests show *FUT1* is essential.**

Panel A. *FUT1* locus and transfection. The figure shows the WT FUT1 locus, with the ORF as a central red box and the flanking sequences used for homologous replacement by SAT or PAC drug resistance cassettes (FUT1::SAT or FUT1::PAC respectively) shown as heavier flanking lines. The location of ‘outside’ primers used to establish planned replacements (a/b or c/d; to confirm replacements SAT or PAC specific primers were substituted for b or c; Fig. S3) are shown. WT *L. major* was first transfected with pXNGPHLEO-FUT1, and successively with the FUT1::SAT and FUT::PAC constructs.

Panel B. The chromosomal null  $\Delta fut1^{\square}$  mutant obtained in the presence of episomal *FUT1*. The genotype of this line is  $FUT::\Delta SAT/FUT1::\Delta PAC/+pXNGPHLEO-FUT1$ , abbreviated as  $\Delta fut1^{\square}/+pXNGPHLEO-FUT1$ . PCR confirmation tests of the predicted genotype are found in Fig. S3. pXNG additionally expresses GFP (42).

Panel C. Plasmid segregation tests of *FUT1* essentiality.  $\Delta fut1^{\square}/+pXNGPHLEO-FUT1$  was grown for 24 h in the absence of Phleomycin, and analyzed by GFP flow cytometry. The gates used for subsequent quantitation and/or sorting, weakly-fluorescent (dim) and fluorescent (bright) parasites are as shown.

Panel D. Results of sorting experiment shown in panel C. Single cells from both GFP dim or bright populations sorted into 96 well plates containing M199 medium, and incubated for 2 weeks, at which time growth was assessed. The numbers sorted and their growth and properties are shown, with ‘bright’ cells mostly surviving and ‘dim’ cells mostly not. All 11 survivors from the ‘dim’ and 12 tested from the ‘bright’ population sort were confirmed to retain of pXNGPHLEO-FUT1 by growth in media containing phleomycin.

Panel E. Generation of line required for plasmid shuffling.  $\Delta fut1^{\square}/+pXNGPHLEO-FUT1$  was transfected with pIR1NEO-FUT1-HA expressing C-terminally tagged *FUT1*. PCR tests confirming the predicted genotype  $\Delta fut1^{\square}/+pXNGPHLEO-FUT1/+pIR1NEO-FUT1-HA$  are shown in Fig. S3). This line was then grown 24 hr in the absence of phleomycin and subjected to cell sorting and growth tests as described in panel C.

Panel F. Results of sorting experiment described in panel E. In this experiment, both ‘dim’ and ‘bright’ cells mostly survived (67 and 85% respectively). 27 of the ‘dim’ cells were tested of



which 26 had lost pXNGPHLE-FUT1 by PCR tests, thereby representing the desired  $\Delta fut1^-/+$  +pIR1NEO-FUT1-HA.

### Figure 3. LmjFUT1 is localized to the parasite mitochondrion

Panel A. Indirect immunofluorescence of parasites lines of  $\Delta fut1^-/+$  pIR1NEO-FUT1-HA incubated with anti-HA antibody (leftmost image, green), Mitotracker Red CMXRos (central image, red), and merged (rightmost image, yellow) are shown. Colocalization by pearson's was 0.97.

Panel B. Cryo-immuno-EM with anti-HA beads of  $\Delta fut1^-/+$  pIR1NEO- FUT1-HA. M, mitochondrion; K, kinetoplast DNA network; F, flagellar pocket.

Panel C. Quantitation of cryo-immuno-EM anti-HA bead labelling to FUT-HA in cellular compartments. The data shown are the bead counts and standard deviation, taken from 3 different experiments comprising 3 sets of 10 sections each, and normalized to the relative compartment area.

### Figure 4. Expression of WT mutant FUT1s in *E. coli* or within *Leishmania*

Panel A: Expression and purification of recombinant GST-FUT1 fusion proteins from *E. coli* visualized follows SDS-PAGE. Lanes 1-6 are GST-FUT1 (WT). Lane 1: before-induction whole cell lysates; lane 2: post-induction whole cell lysates; lane 3: soluble fraction; lane 4: insoluble fraction; lane 5: elution ; lane 6: concentrated eluted protein. Lane 7 Purified GST-CAT-MUT; Lane 8, purified GST-MTP-MUT; and lane 9, purified HIS-BLOCK-MUT.

Molecular weight Markers are shown on the left

Panel B. Western blot analysis of C-terminal HA-tagged FUT1s expressed in *Leishmania*.

Lysates from parasites expressing the indicated HA-tagged FUT1s in a  $\Delta fut1^-/+$  pXNGPHLEO-FUT1 background are shown (the presence of untagged WT FUT1 was required as none of the mutants were viable in its absence; Fig 6). Western blots were performed with anti-HA to visualize the tagged FUT1 expression, and anti-*L. major* H2A as a loading control

### **Figure 5. LmjFUT1 is a fucosyltransferase**

Panel A: Time course of GDP production with GST-FUT1 in the presence or absence of GDP-Fucose and 1 mM LNB. Solid circles, incubation in the presence of GDP-Fucose + LNB (“total activity”); solid squares, incubation with GDP-Fucose alone (hydrolysis activity); solid triangles, difference between presence and absence of LNB (acceptor dependent fucosyltransferase activity).

Panel B. GST-FUT1 was incubated with GDP-Fucose in the presence of various acceptors, and the luminescence from GDP produced was measured after 5 min of incubation. Lane 1 NC, no acceptor (hydrolysis only); lane 2, LNB; lane 3, Gal1,4GlcNAc; lane 4, LacNAc; Lane 5, Gal1,3GalNAc; lane 6; Galactose; lane 7, EGF, EGF-like repeat; lane 8, thrombospondin like repeat; lane 9, mHSP60 peptide; and lane 10, mHSP70 peptide. The red horizontal line represents the hydrolysis activity (lane 1).

Panel C: Fucosyltransferase activity assayed in *L. major in vivo*. Whole cell lysates were incubated with anti-HA agarose beads, which were washed, and then incubated with 1  $\mu$ Ci GDP- $[^3\text{H}]$ -Fuc and 1 mM LNB as acceptor. Reaction products were separated by HPTLC and

detected by fluorography as shown. Lane 1, WT; lane 2,  $\Delta fut1^-$  + pIR1NEO-LmjFUT1-HA;

lane 3,  $\Delta fut1^-$  + pIR1NEO-TbFUT1; lane 4, WT / + pIR1NEO-Lmj-FUT1-HA.

**Figure 6. Both the localization in mitochondrion and fucosyltransferase activity are required for the essential function of FUT1.**

Panel A. Depiction of mutant LmjFUT1-HA designed to block mitochondrial import or catalysis.

The mitochondrial targeting peptide (MTP) is shown in yellow, the catalytic motif I is shown in gray, and the HA tag is shown in white, with the remainder of FUT1 in red. CAT-MUT-HA has an R297A substitution; MTP-MUT-HA replaces two Glu residues in the MTP with Arg ;

BLOCK-MUT-HA has the cytoplasmic protein PTR1 fused to the C-terminus. The results of mitochondrial localization tests (Panel D) and plasmid shuffling tests (Panel C) are summarized on the right of the illustrations.

Panel B. Scheme of plasmid shuffling to test the function of mutant FUT1s. FUT1s were

expressed from pIR1NEO (“pIR1NEO-MUT-FUT-HA”) in the  $\Delta fut1^-$  + pXNGPHLEO-FUT1

line. Growth in the absence of phleomycin and FACS sorting of ‘dim’ and ‘bright’ cells was performed as described in Fig. 2.

Panel C. Plasmid shuffling tests of FUT1 mutants.  $\Delta fut1^-$  pXNG-FUT1/pIR-MUT-HA lines

was grown for 24 h in the absence of phleomycin, and analyzed by GFP flow cytometry. In all tests, survival of “bright” (control” cells was 79-90%. The results show that few dim cells yielded growth, and all of those arose from incomplete sorting (retention of pXNGPHLEO-FUT1)

Panel D: Indirect immunofluorescence of HA tagged FUT1 expressed from pIRNEO in the  $\Delta fut1^{-}/+$  +pXNGPHLEO-FUT1 background. Column a, anti-HA (red); column b, DNA (Hoechst, blue), and column c, merge of columns a and b.

Panel E. Acceptor-dependent specific activity of purified recombinant FUT1 proteins assayed by GDP formation in the presence of GDP-Fucose and LNB. The average and standard deviation of three preparations is shown.

### **Figure 7. Recovery of a single *FUT1*-null mutant ( $\Delta fut1^s$ ).**

Panel A. Starting line for plasmid segregation in rich culture medium.  $\Delta fut1^{-}/+$  +pXNGPHLEO-FUT1 cells were grown in Schneiders' medium and subjected to single cell sorting into 96 well plates in Schneider's media.

Panel B. Control "bright" cells showed a typically high frequency of wells supporting growth (93%), while few "dim" cells survived as in M199 medium (Fig. 2). Of the 29 survivors, 28 retained the pXNGPHLEO plasmid, while one designated  $\Delta fut1^s$  did not.

Panel C. PCR tests of  $\Delta fut1^s$ , WT and a  $\Delta fut1^s$  /pXNGPHLEO-FUT1 'addback'. Primer sets l-SAT, r-SAT, l-PAC and r-PAC confirm  $\Delta fut1^s$  lacks chromosomal FUT1 (Fig. S3) and FUT1 ORF primers (l, 3955; j, 3956) confirm the absence of *FUT1* sequences in  $\Delta fut1^s$  and its presence in the addback.

Panel D. Growth of WT,  $\Delta fut1^s$  and  $\Delta fut1^s$  /+pXNGPHLEO-FUT1 in M199 medium. Parasites were inoculated at a density of 105/ml and growth was followed by coulter counting.

**Figure 8.  $\Delta futI^S$  shows multiple mitochondrial abnormalities and dysfunctionalities.**

Panel A, transmission EM of WT (subpanel a) and  $\Delta futI^S$  (subpanels b-d). m, mitochondria; k, kinetoplast; black arrow, normal mitochondrial cristae; white arrows, aggregates inside mitochondria; star, bloated cristae. Bars = 500 nm.

Panel B. Ultrastructural analysis of kDNA in WT and  $\Delta futI^S$ . While WT cell presents typical compact kDNA structure, mutant cell shows a ‘looser’ kDNA network that is wider with decreased length (see Fig. S6 for quantitation). Black bar: 500 nm.

Panel C. Loss of kDNA in  $\Delta futI^S$ . WT or  $\Delta futI^S$  were stained with DAPI to visualize the kDNA network (small bright spot) and nucleus (dimmer large circle). A typical 1 kinetoplast / 1 nucleus (1K/1N) pattern is shown for WT in the leftmost panel; the central panel shows a  $\Delta futI^S$  cell with a 1K/2N pattern and the rightmost panel shows a  $\Delta futI^S$  cell lacking kDNA (0K/1N).

Panel D. Quantitation of kDNA/nucleus patterns seen in WT (gray bars) vs  $\Delta futI^S$ . (dark bars). A “0” indicates no cells of that pattern

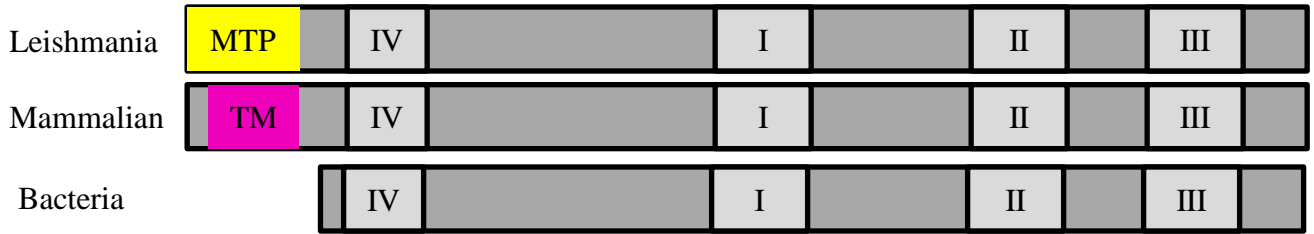
Panel E. Mitochondrial potential assessed by staining with TMRE.

Parasites were incubated with 100 nM TMRE and analyzed by flow cytometry, with the signal on the FL-2 channel expressed in arbitrary units (a.u.) . The left portion shows cells incubated for 15 min; the right portion shows cells further incubated with 300  $\mu$ M cyanide m-chlorophenylhydrazine (CCCP) for 60 min. Lines tested are WT, black bar;  $\Delta futI^S$ , gray bar; and  $\Delta futI^S$ /+pXNGPHLEO-FUT1, white bar.



# Fig. 1

## A



## B

↓

**Motif IV**

```

LmjFUT1 : ----MRASARMRAAVAAATPSPSKARLTNIVEGMGN-----CLELIVANLLATAHRT-GIPAYLEAVPFSSS-----AEDPRPT
TbFUT1  : ----MSNKAFLTTNLVGGGLGN-----CLELIVANLLATARRN-GLTAVLPRMSFSSS-----NEQPRPV
HsFUT1  : MWLRSRQLCLAFLLVCVLSVIFFLHIHQSFPHGLGLSILCPDRRLVTPPVAIECLPGTAMGPNASSSCPQHFPASLSGTWTVPNGRFGNQMGQYAT
EcWBIQ  : ----MMYCCLSGGLGN-----QMEQYAAAYILKQHF PDTILVLDDSYFFNQFPQKDTIRHLELDQFKI
  
```

**Motif I**      **Motif II**

```

LmjFUT1 : YWDTLFRDLGHYGVQMCASSPPIEVVTVPE-----TRPVRKVQLDAQRPCVFHMGFFQSDAFFDDH-PILSSVIPRELWDSAGKH
TbFUT1  : YWQSVFANLESYGVGHDLPTG-VEEVIVPE-----QRPAAAVTLDAQRCVYNVGEFFQSETFFADH-PVWSEVISPEMRRRTSMRH
HsFUT1  : LLALAQLNGRRRAEILPAMHAALAEVFRITLPVLAPEVDSRTFPWRELQLHDWMSEYADLRDPFLKLSGEPSCSWTFFHHLREQRRREFTLHDHLREEAQ
EcWBIQ  : IFDRFSSKDEKVRINRLRKHKKIELLNSFLQFTAIKLCN----KYSLNDSAYYNPESIKNIDVACLFSFYQDSKLLNEHRDLPLPLFEIRDRLVLCV
  
```

**Motif I**      **Motif II**

```

LmjFUT1 : LATYYG----GGSCHTVALHVRRGDYTR--FTDIFEQLDVVEYDAVQRQLLGGLLLQSPSLLRQQSPVDSAQAPTAGAPLLPLHLIVFCDEE-
TbFUT1  : MWENYNNGYKDPSL-AHYVGLHIRRGDYLR--LRDVFEIL-EVDYDAVQRQLLGALHQ-----RSPG-----HRSTHLLVFCBEE-
HsFUT1  : SVLGQLRLGRTGDRPRTFVGVHVRRGDYLVQMPQRWKGVGDSAYLRQAMDWFRARHEAP-----VFVVTSNMGEMCKEN-
EcWBIQ  : NIQIYSLIT---DS-KNITSIHVRRGDYVNNKHAAKFHGILSMDYISAMEYIESECGSQ-----TFIIFTDDVIWAKK-
  
```

**Motif I**      **Motif II**

**Motif III**

```

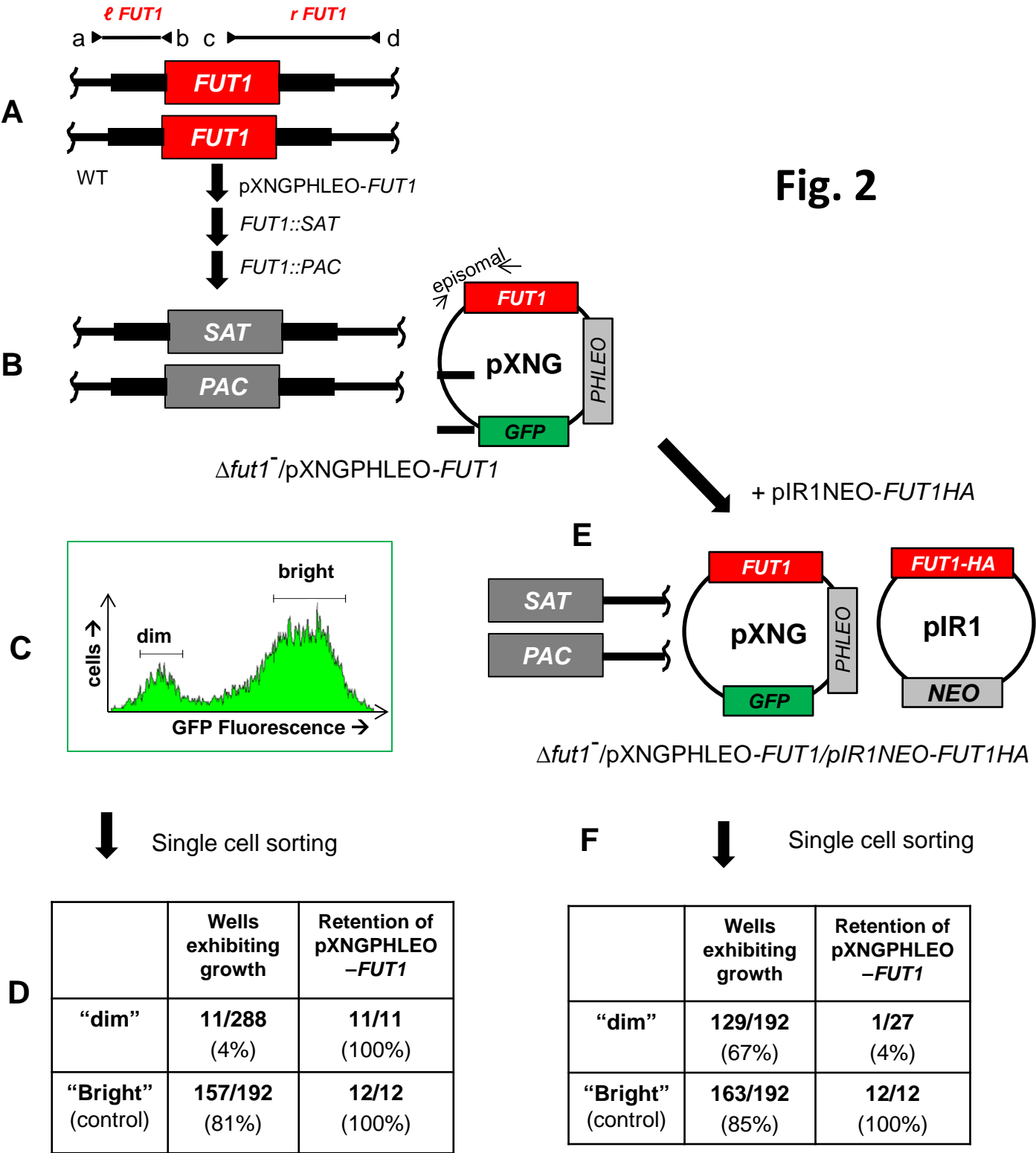
LmjFUT1 : -RFGRTVVGYFRIRKYKGAVMVSIVCAATEASAI SARPTASSPSVPIMPRDVLELLMMSQCNDVVMANSTESWNGAYLN---RVSLRRVIAFSRWFVKD
TbFUT1  : RRYGASVVG YFRSKYEGLEVS-----LVSPTEKHVKFPCDAQMPREVLELLMLSSCDDVIMANSSWSWNPAYLN---SRPVRVVAFSRWFVQH
HsFUT1  : ---IDTSQGDVTFAGDGQEAT-----PWKDFALLTQCNTIMTIGTEGFWAAYLAGGDTVYLANFTLPDSEFLKI
EcWBIQ  : -----FSKYSNCLVADADE-----NKFSVIDMYMLSLCANNIITANSTYSWNGAWLN---RSEDKLVIAPKQWYISG
  
```

**Motif III**

```

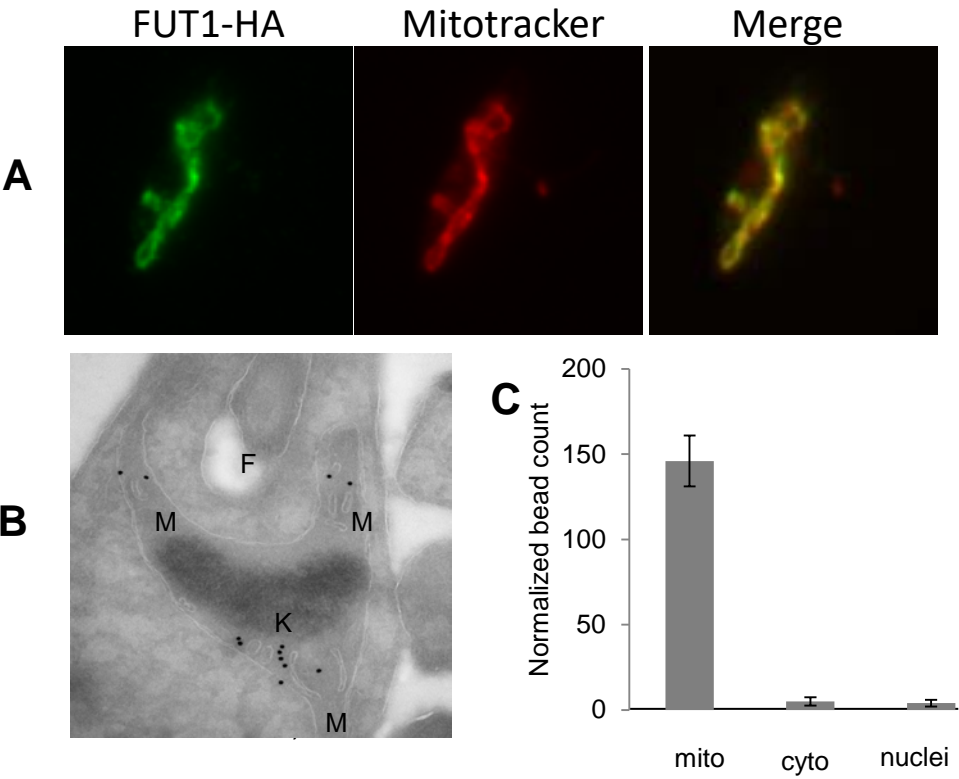
LmjFUT1 : PY-----PASNHLYCPCWILI--
TbFUT1  : PY-----PQSNHMYCNDWILL--
HsFUT1  : FKPEAAFLPEWVGINADLSPLWTLAKP
EcWBIQ  : NE-----CSLKNEWIAM--
  
```

Fig. 2

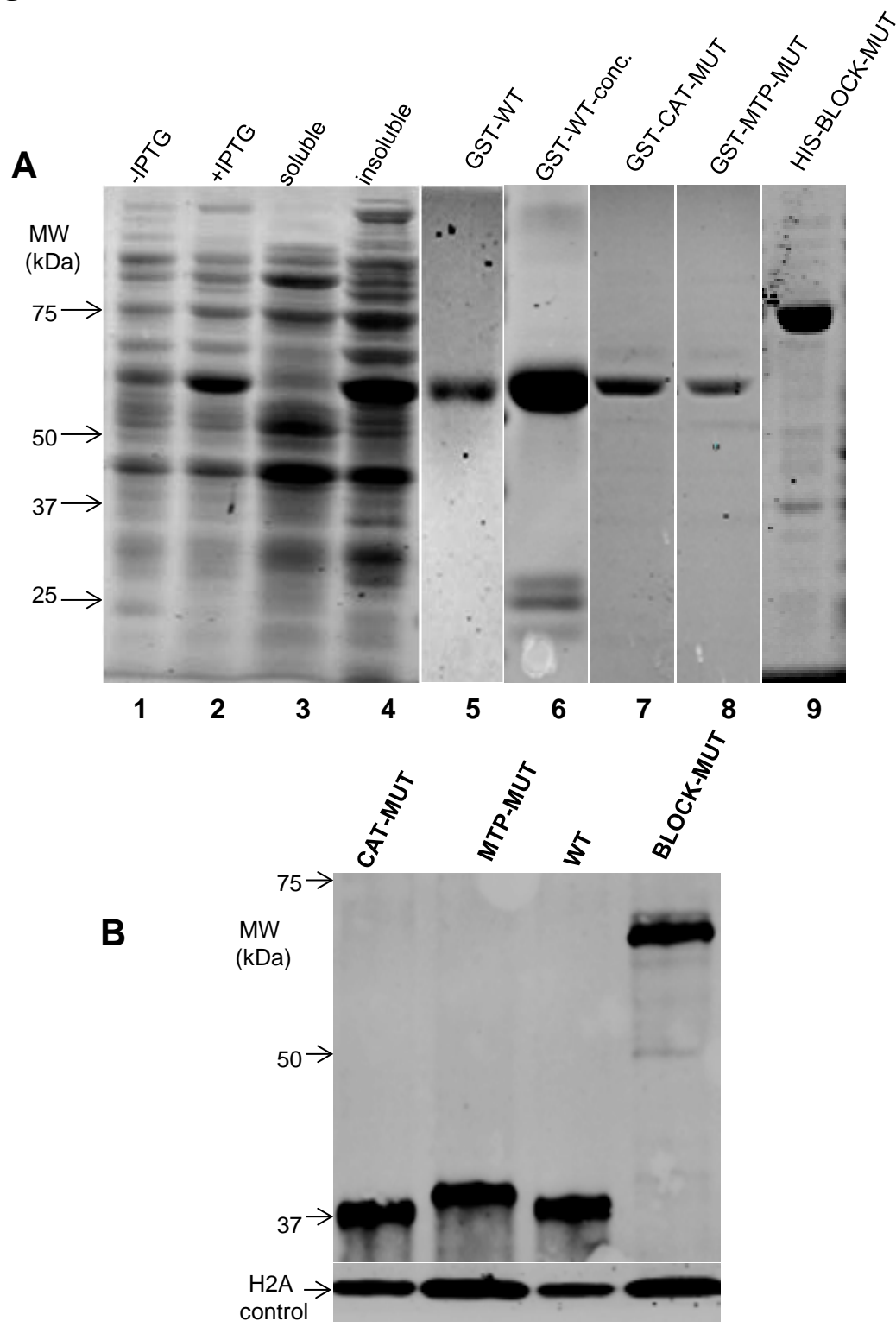




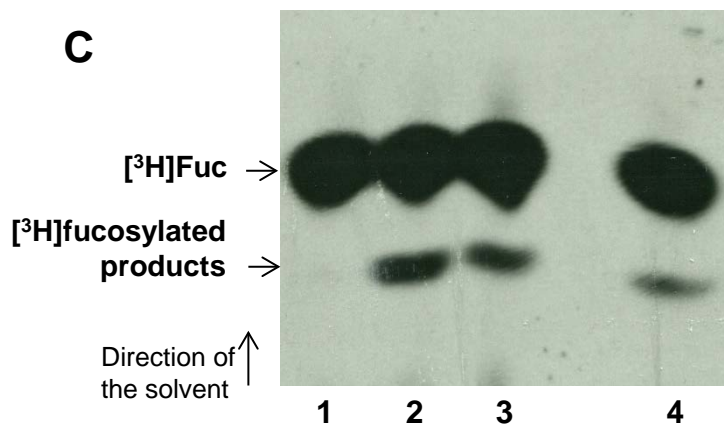
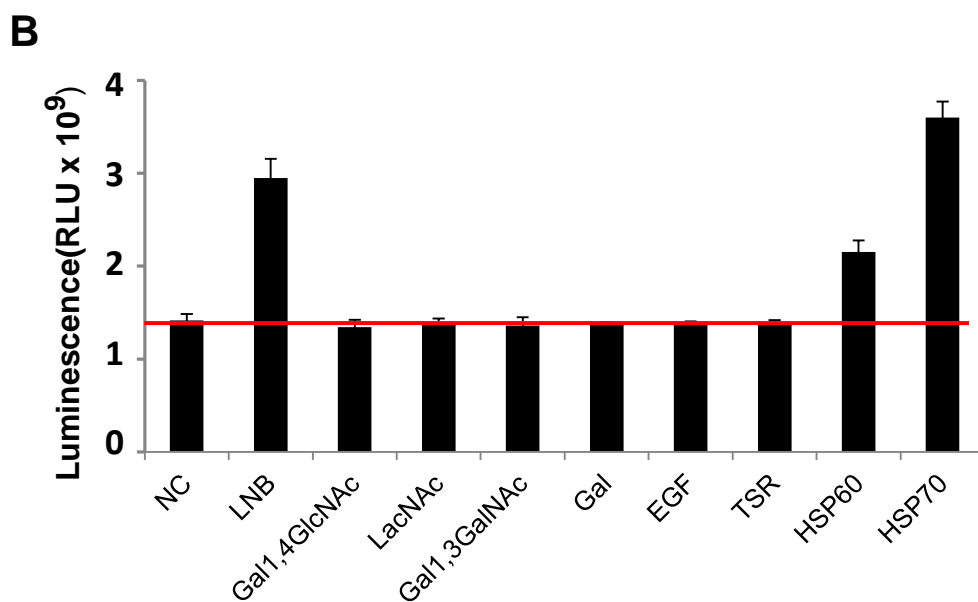
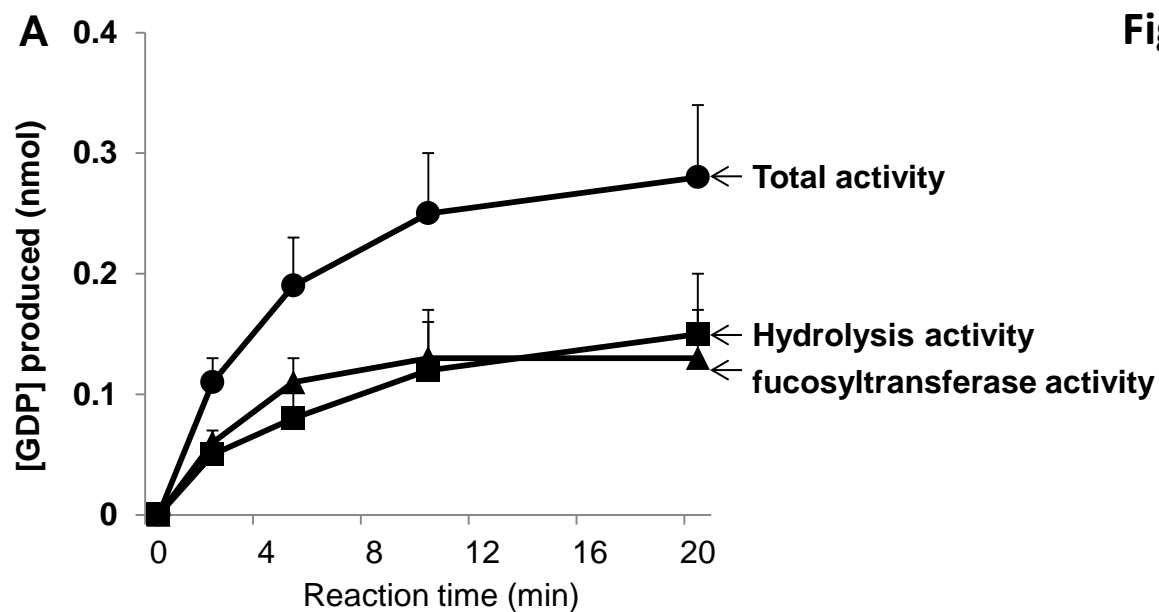
**Fig. 3**



**Fig. 4**



**Fig. 5**



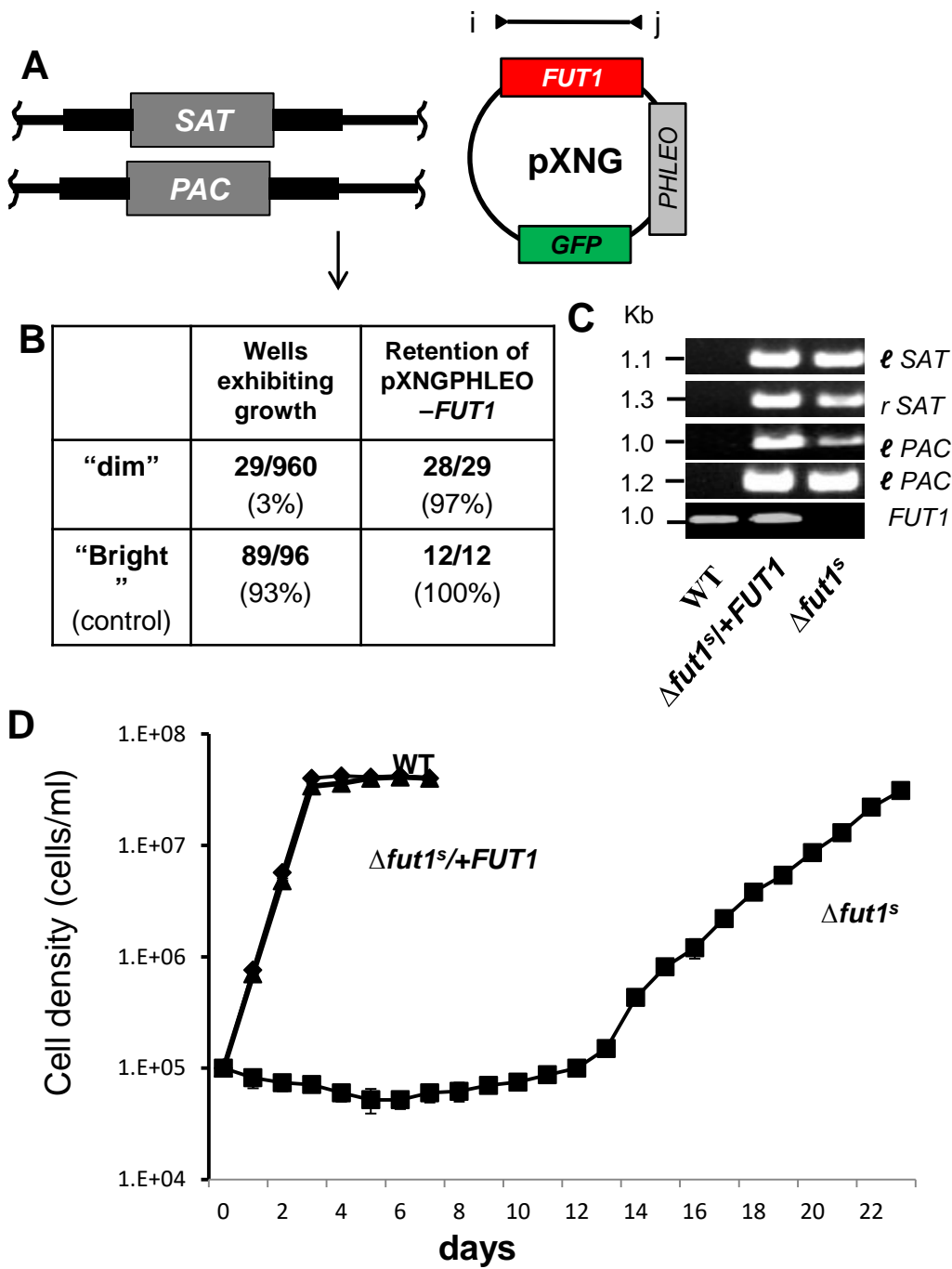
Mitochondrial function  
localization (plasmid shuffling)

Construct	Diagram	+	-
CAT-MUT-HA		+	-
WT-HA		+	+
MTP-MUT-HA		-	-
PTR1		-	-

“dim”	Wells exhibiting growth	Retention of pXNGPHLEO – <i>FUT1</i>
CAT-MUT	<b>6/192*0.79</b> (3%)	<b>6/6</b> (100%)
MTP-MUT	<b>4/192*0.90</b> (2%)	<b>4/4</b> (100%)
BLOCK-MUT	<b>6/192*0.90</b> (3%)	<b>6/6</b> (100%)

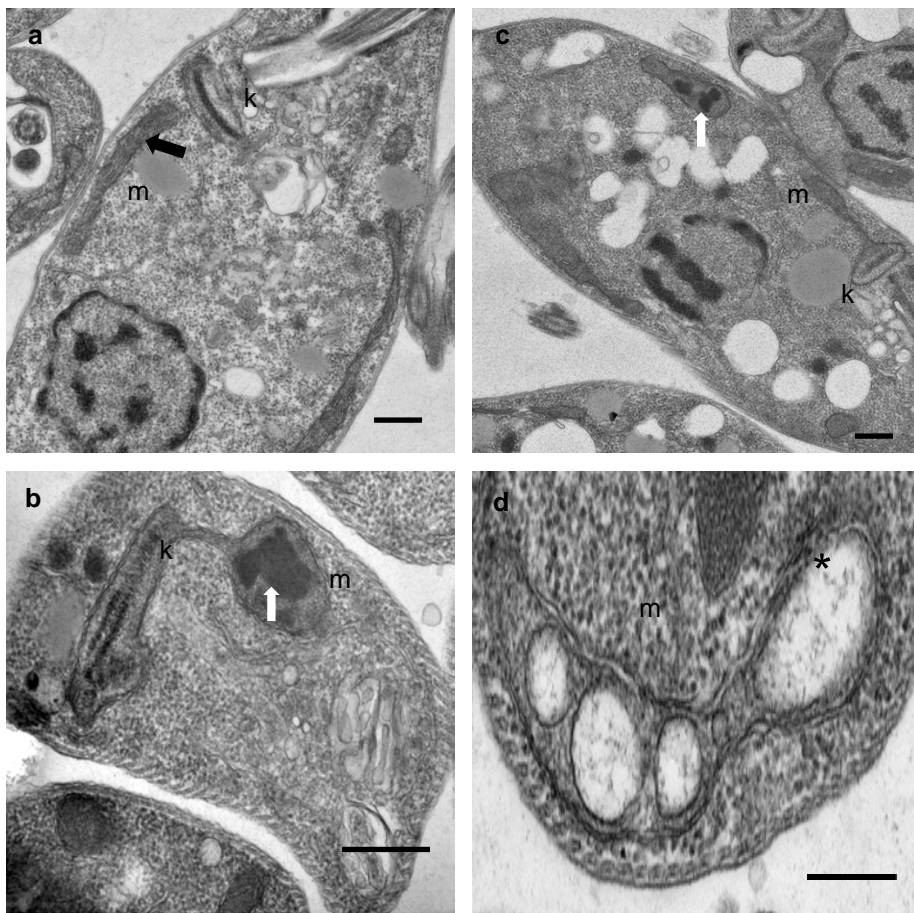
Enzyme source	Specific activity (nmol min <sup>-1</sup> mg <sup>-1</sup> )
GST-FUT1(WT)	59 ± 5.4
GST-MTP-MUT	57 ± 4.3
HIS-BLOCK-MUT	65 ± 3.2
GST-CAT-MUT	5.6 ± 0.6

**Fig. 7**



**Fig. 8**

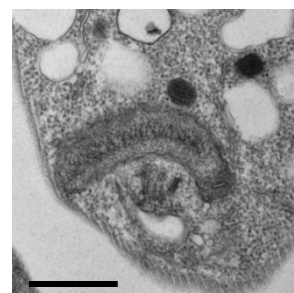
**A**



**B**

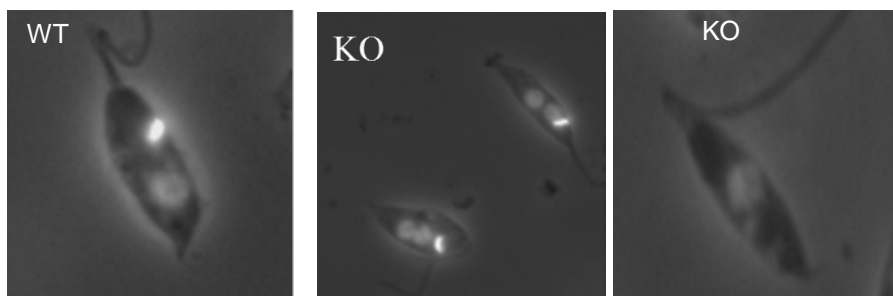


**WT**

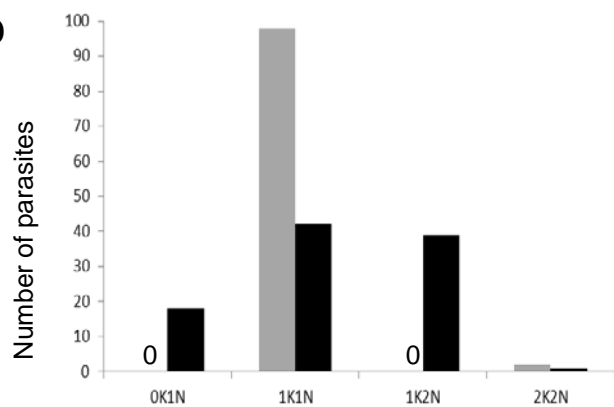


**$\Delta fut1^s$**

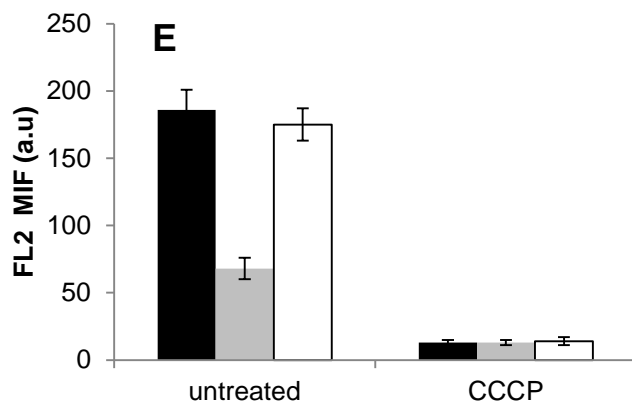
**C**



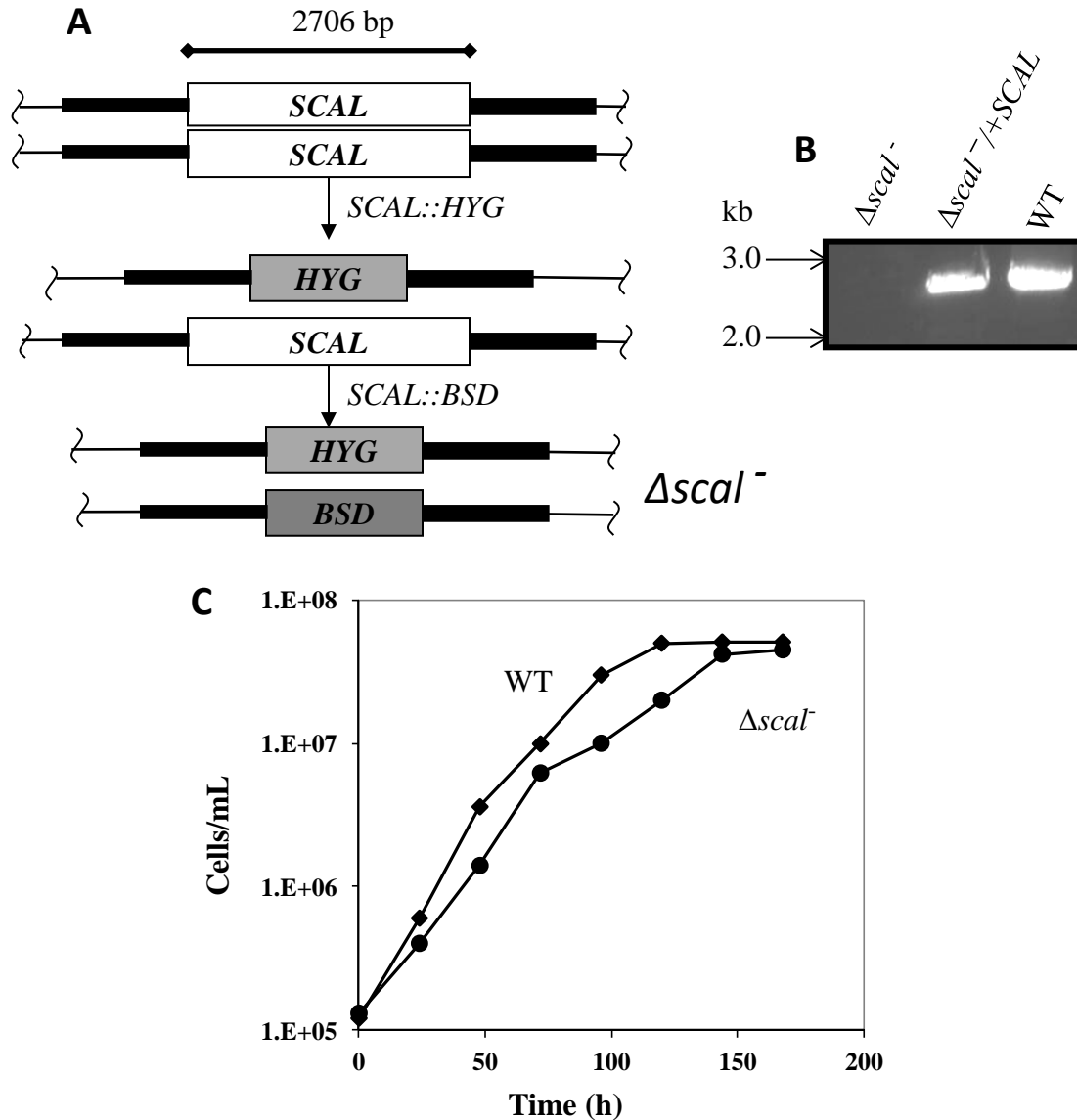
**D**



**E**



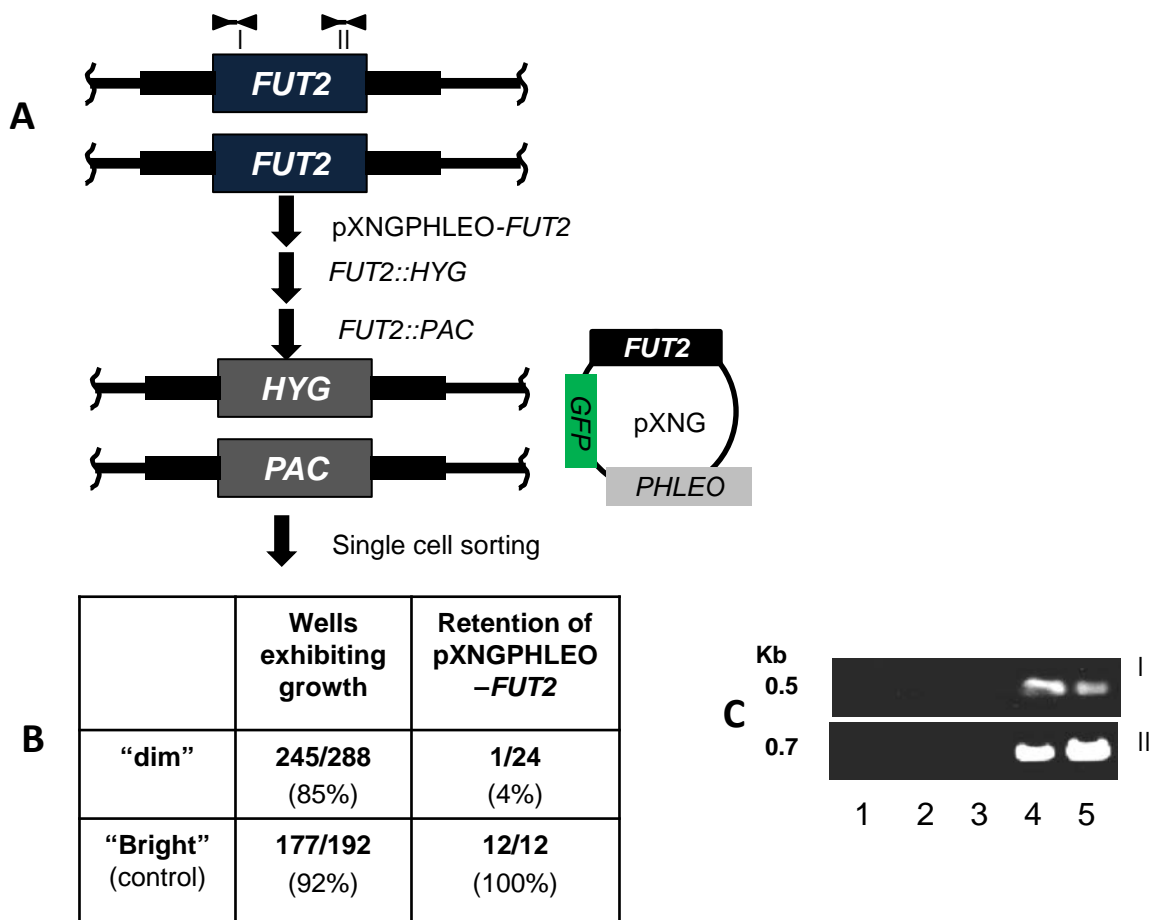
**Figure S1**



**Figure S1. The *SCAL* gene is not essential in *L. major* promastigotes**

- A. Schematic of the *SCAL* locus showing flanking regions used for homologous gene replacement (dark flanking bars), the *SCAL* ORF used for PCR tests with primers 3840/3841, and the *SCAL::HYG* or *SCAL::BSD* drug resistance cassettes. WT *L. major* were successively transfected and selected for the *SCAL::HYG* and *SCAL::BSD* targeting fragments, leading to complete loss of *SCAL* ( $\Delta scal^-$ ).
- B. PCR with *SCAL* ORF primers showing loss of *SCAL* in  $\Delta scal^-$  and retention in WT. and restoration in  $\Delta scal^-/+pXNGSAT-SCAL$
- C. Growth of WT and  $\Delta scal^-$  in M199 medium.

**Figure S2**

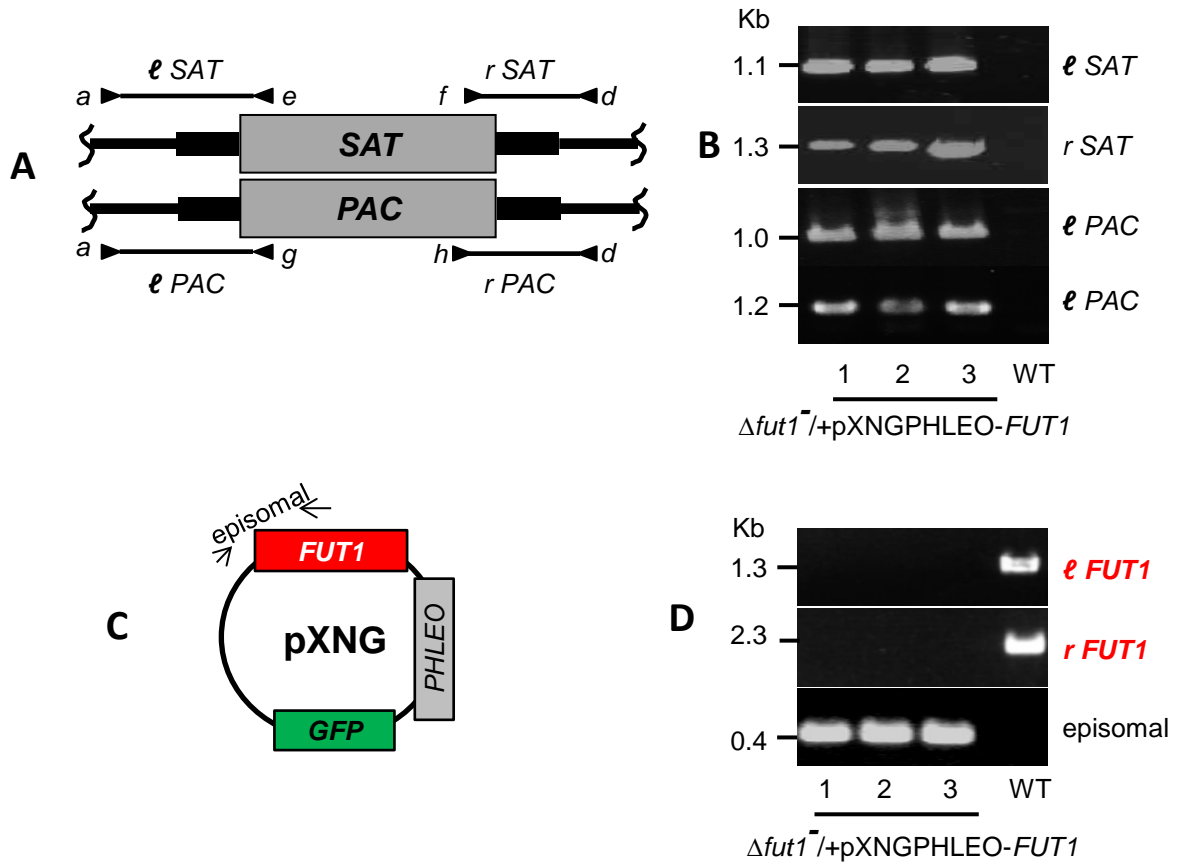


**Figure S2. The *FUT2* gene is not essential in *L. major* promastigotes.**

- A. Diagram of the *FUT2* locus and PCR primers used, and the scheme for introduction of episomal *FUT2* followed deletion of both chromosomal alleles. Heavy black bars depict the flanking sequences used in targeting constructs.
- B. Results of plasmid segregation tests; survival of “dim” cells and loss of pXNGPHLEO-*FUT2* established the viability of the  $\Delta fut2^-$  cells.
- C. PCR to confirm loss of all *FUT2* sequences in  $\Delta fut2^-$ . Lanes 1-3, 3 different  $\Delta fut2^-$  clones; lane 4,  $\Delta fut2^-/+pIR1SAT-FUT2$ ; lane 5, WT. Primer pairs I (3990/3839) and II (3957/3958) probe the left and right ends of the *FUT2* ORF.

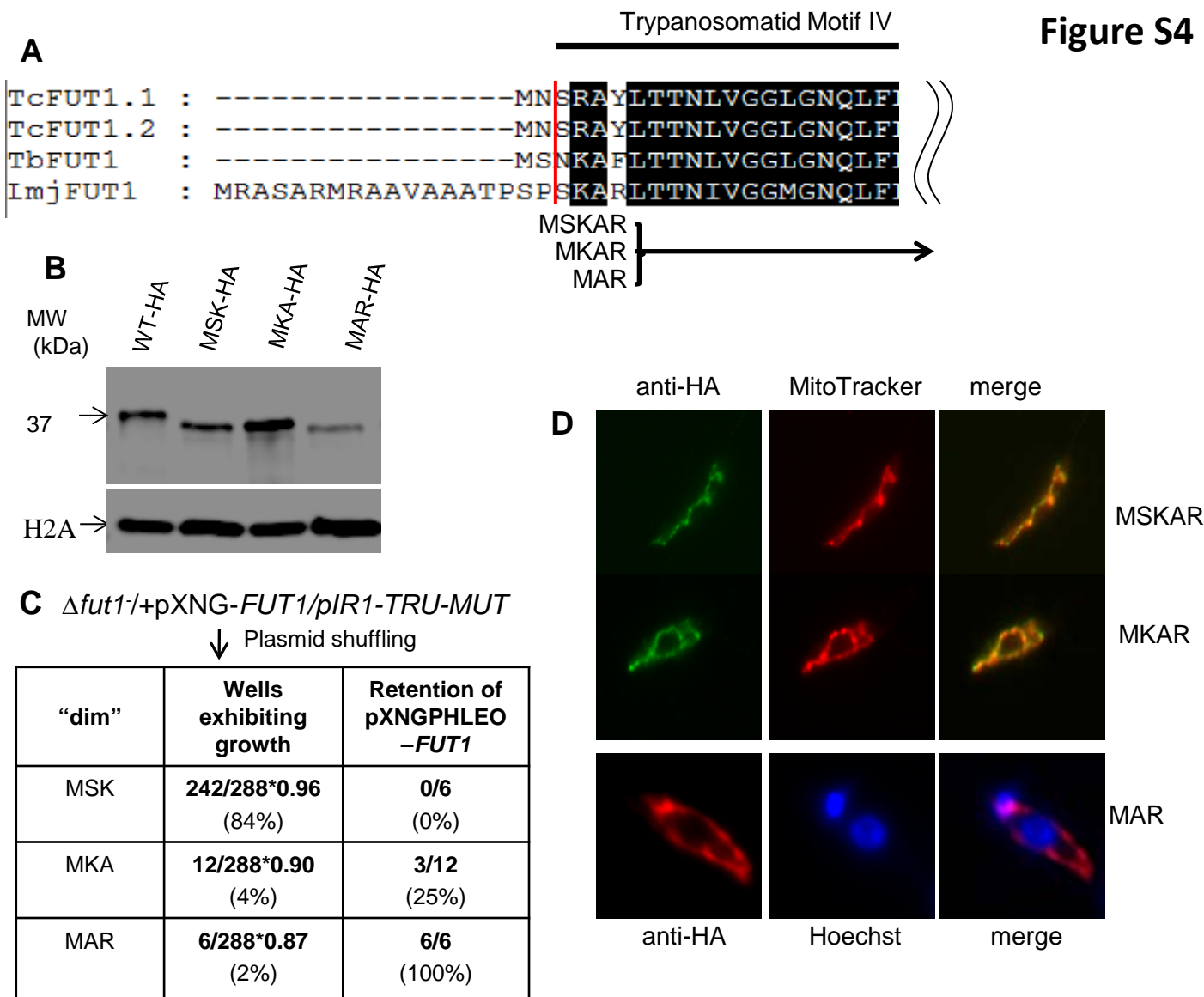


**Figure S3**



**Fig. S3 PCR verification tests of *fut1*<sup>-/+</sup>pXNGPHLEO-*FUT1***

- Schematic of chromosomal loci with *FUT1*:*SAT* and *FUT1*:*PAC* replacements. The location of PCR primer pairs used to establish both planned chromosomal replacements is shown. Black bars represent flanking regions used for homologous recombination.
- PCR tests of planned *SAT* and *PAC* replacements depicted in panel A. Lanes 1-3 contain three different  $\Delta fut1^{-}/+pXNGPHLEO-FUT1$  clones; lane 4, WT.
- Schematic of the pXNGPHLEO-*FUT1* episome. The location of the episomal-specific *FUT1* PCR primers is indicated.
- PCR tests confirming expected presence or absence of pXNGPHLEO-*FUT1*; lanes and samples are the same as in panel B.



**Figure S4. Functionality and mitochondrial localization of N-terminal deletions of LmjFUT1**

Panel A. Alignment of N-termini of FUTs from Trypanosomatids and scheme of truncated N-terminal LmjFUT mutants (TRU).

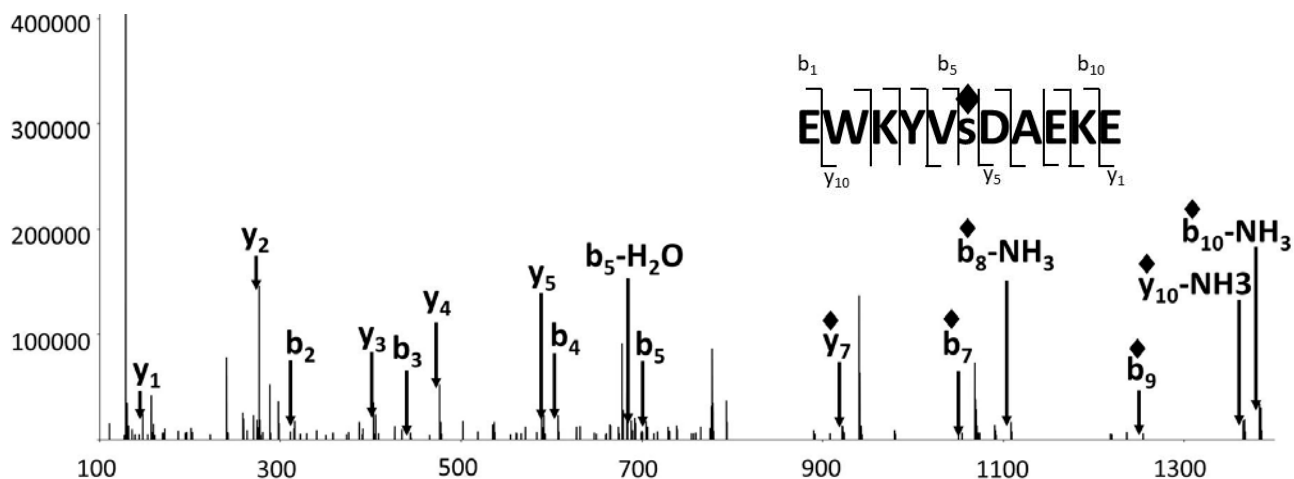
Panel B. Western blot analysis with anti-HA antisera of whole cell lysates from tagged truncated FUT1 mutants ( $\Delta fut1^-/+pXNG-FUT1/pIR1-TRU-HA$ ). Lane 1: WT-HA, Lane 2: MSK-HA, Lane 3: MKA-HA, and lane 4: MAR-HA.

Panel C. Plasmid shuffling to test the function of truncated LmjFUT1s (TRU).

Panel D. Indirect immunofluorescence of truncated LmjFUT mutants described in panel C incubated with anti-HA antibody (green or red, column a), Mitotracker Red CMXRos (red, column b for MSKAR and MKAR mutants), or Hoechst dye (blue, column b for MAR mutant); merged fluorescence images are shown in panel c. For MSKAR and MKAR mutants the Pearson's r colocalization value with the mitochondrion was 0.95 and 0.93.

## Figure S5. Tandem MS analysis

- A. HCD spectrum of the EWKYVS(Fuc)DAEKE peptide product formed after fucosylation by recombinant LmjFUT1 *in vitro*, acquired from the doubly charged precursor ion at  $m/z = 765.355$ . Most of the unmarked ions could be assigned to loss of water and ammonia from the parent fragment ions as listed in panel B. ♦ marks fucose-containing ions.



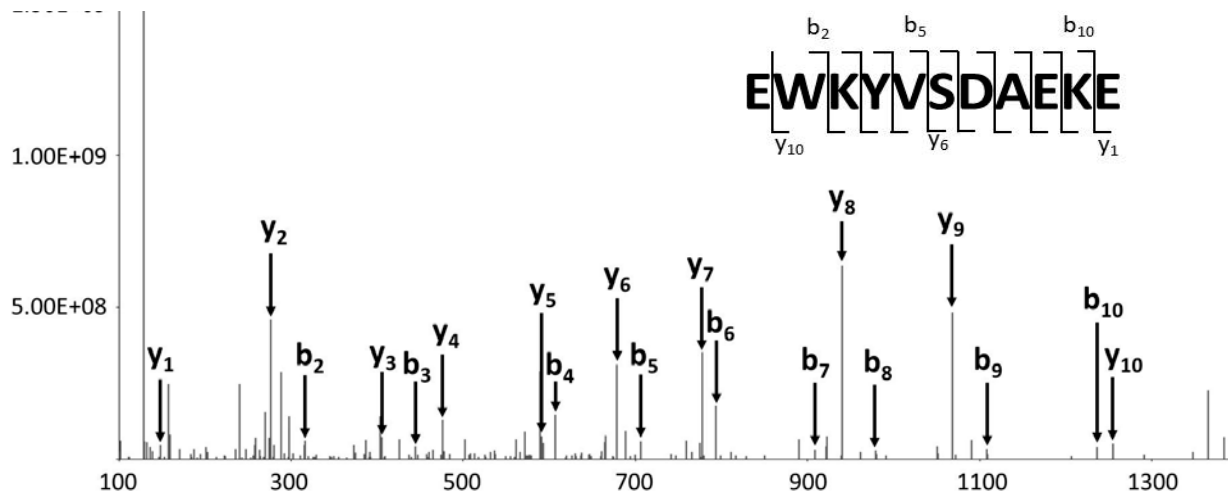
B. Assigned fragmentation ions and mass accuracy from tandem MS of the EWKYVS(Fuc)DAEKE peptide shown in panel A.

♦ marks fucose-containing ions.

ion	$m/z$ (Theoretical)	$m/z$ (Observed)	ppm
$b_4$	607.288	607.289	2.6
♦- $b_7$	1054.473	1054.48	3.0
♦- $b_9$	1254.552	1254.559	5.2
$b_2$ -H <sub>2</sub> O	298.119	298.119	0.7
$b_3$ -H <sub>2</sub> O	426.214	426.212	3.3
$b_4$ -H <sub>2</sub> O	589.277	589.278	2.0
$b_5$ -H <sub>2</sub> O	688.345	688.342	4.8
♦- $b_{10}$ -NH <sub>3</sub>	1365.621	1365.627	4.5
$y_1$	148.060	148.061	1.4
$y_2$	276.155	276.156	0.4
$y_3$	405.200	405.199	2.5
$y_4$	476.235	476.235	1.0
$y_5$	591.262	591.264	3.9
♦- $y_7$	923.420	923.418	2.5
$y_1$ -H <sub>2</sub> O	130.050	130.05	0.8
$y_2$ -H <sub>2</sub> O	258.145	258.145	1.9
$y_3$ -H <sub>2</sub> O	387.187	387.188	1.8
$y_2$ -NH <sub>3</sub>	259.129	259.128	1.2
♦- $y_{10}$ -NH <sub>3</sub>	1383.632	1383.637	4.0

## Figure S5. Tandem MS analysis (continued)

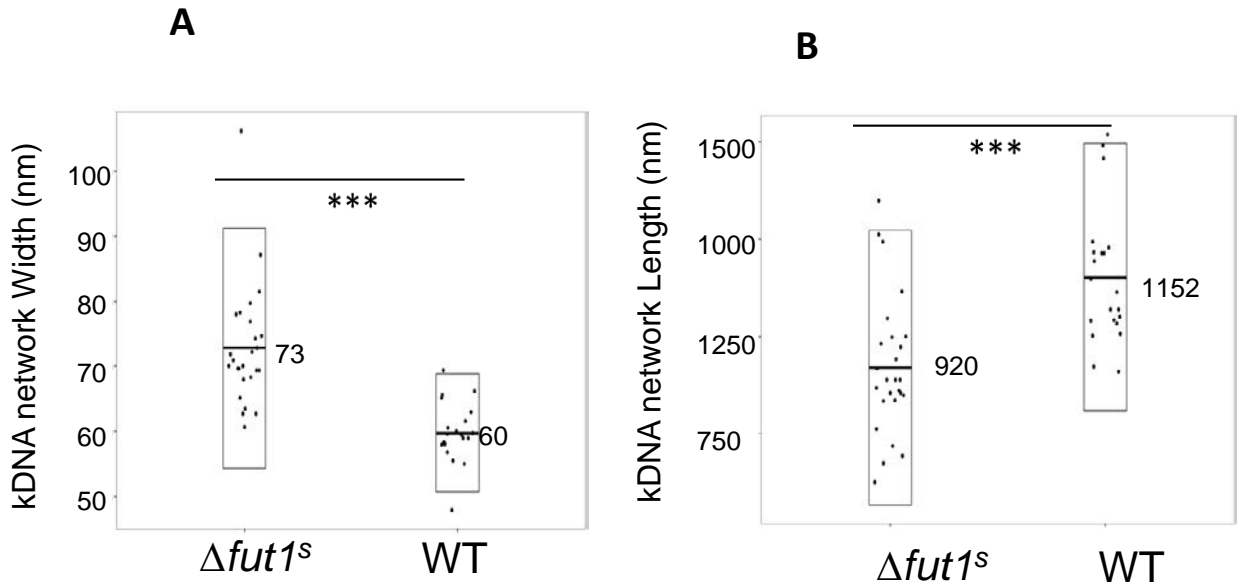
C. HCD spectrum of the EWKYVSDAEKE peptide, acquired from the doubly charged precursor ion at  $m/z = 692.325$ . Most of the unmarked ions could be assigned to loss of water and ammonia from the parent fragment ions as listed in panel D.



D. Assigned fragmentation ions and mass accuracy from tandem MS of the EWKYVSDAEKE peptide shown in panel C.

ion	$m/z$ (Theoretical)	$m/z$ (Observed)	ppm
$b_3$	444.224	444.226	-5
$b_4$	607.288	607.288	-0.8
$b_8$	979.452	979.454	-1.5
$b_9$	1108.495	1108.493	1.3
$b_{10}$	1236.59	1236.59	-0.6
$b_2-H_2O$	298.119	298.119	-2.3
$b_3-H_2O$	426.214	426.215	-2.1
$b_4-H_2O$	589.277	589.278	-2.2
$b_5-H_2O$	688.345	688.346	-1.2
$b_7-H_2O$	890.404	890.408	-4.4
$b_8-H_2O$	961.441	961.444	-2.4
$b_9-H_2O$	1090.484	1090.479	4.4
$b_6-NH_3$	776.361	776.363	-1.7
$y_1$	148.060	148.060	0.7
$y_2$	276.155	276.156	-1.1
$y_3$	405.198	405.198	-1.2
$y_4$	476.235	476.236	-2.7
$y_5$	591.262	591.261	1.5
$y_6$	678.294	678.294	-0.1
$y_7$	777.362	777.364	-1.5
$y_8$	940.426	940.427	-1.4
$y_9$	1068.521	1068.526	-5
$y_{10}$	1254.6	1254.598	1.7
$y_2-H_2O$	258.145	258.146	-3.5
$y_3-H_2O$	387.187	387.188	-1.8
$y_4-H_2O$	458.225	458.227	-4.6
$y_9-H_2O$	1050.51	1050.511	-0.9
$y_{10}-H_2O$	1236.59	1236.59	-0.6
$y_2-NH_3$	259.129	259.130	-2.7

**Figure S6**



**Figure S6. Measurement of the kDNA network dimensions in WT and  $\Delta fut1^s$ .**

The kDNA network width and length were measured from transmission EM images using Image J; each dot represents one network. A, width; B, length. \*\*\*,  $p$  value < 0.001

**Table S1. Expression and gene targeting constructs used in this study**

Construct Name	Lab stra	Description	Reference or method of construction (for primer sequences see Table S2)
<u><b>Leishmania or E. coli vectors</b></u>			
pXNGPHLEO	B6432	<i>Leishmania</i> expression vector, PHLEO <sup>R</sup>	Guo, H. <i>et al</i> (2017), <i>J. Biol. Chem.</i> 292: 10696–10708.
pXNGSAT	B5840	<i>Leishmania</i> expression vector, SAT <sup>R</sup>	Guo, H. unpublished work.
pIRINEO	B6483	<i>Leishmania</i> expression vector, NEO <sup>R</sup> (episomal,	Robinson K.A., Beverley, S.M. (2003); <i>Mol Biochem Parasitol</i> 128: 217–228
pIRISAT	B3541	<i>Leishmania</i> expression vector, SAT <sup>R</sup> (episomal,	Capul AA, <i>et al</i> (2007), <i>J. Biol. Chem.</i> 282: 14006–14017
pGEX-3X	B6011	<i>E. coli</i> expression vector; Amp <sup>R</sup>	Smith D.B., Johnson K.S (1988), <i>Gene</i> 67:31-40.
pET-16B		<i>E. coli</i> expression vector; Amp <sup>R</sup>	Studier, F.W. (2018), <i>Current Protocols in Molecular Biology</i> (2018) 124:e63
pGEM-T		<i>E. coli</i> TA cloning vector; Amp <sup>R</sup>	<a href="http://www.promega.com">http://www.promega.com</a>
<u><b>constructs for expression in Leishmania</b></u>			
pGEM-FUT1	B6552	LmjFUT1 ORF donor	PCR with primers 3955/3956 from LmjFV1 genomic DNA, insert by 1A cloning into pGEM-T
pXNGPHLEO-FUT1	B7073	<i>Leishmania</i> expression vector for LmjFUT1	insertion of BglII-digested ORF from pGEM-FUT1 into BglII site of pXNGPHLEO
pIRINEO-FUT1-HA	B7147	<i>Leishmania</i> expression vector for LmjFUT1-HA	PCR LmjF1 ORF using primers 3955/5645 adding C-terminal HA tag with LmjFV1 DNA template; insert into BglII site of pIRINEO
pIRINEO-TbFUT1	B7148	<i>Leishmania</i> expression vector for TbFUT1	PCR of 1bFUT1 ORF from <i>T. brucei</i> strain 427 genomic DNA with primers 5642/5643, digested with XmaI and inserted into XmaI site of pIRINEO
pIRINEO-TbFUT1-HA	B7198	<i>Leishmania</i> expression vector for TbFUT1-HA	PCR of 1bFUT1 ORF from <i>T. brucei</i> strain 427 genomic DNA with primers 5642/6193 adding C-terminal HA tag with <i>T. brucei</i> strain 427 DNA, inserted into pIRINEO
pIRINEO-MSK-FUT1-H	B7197	LmjFUT1 mutant MSK-FUT1-HA	PCR with primers 6192/5645 from LmjFV1 genomic DNA, digested with BglII, and inserted into BglII site of pIRINEO
pIRINEO-MKA-HA	B7321	LmjFUT1 mutant MKA-FUT1-HA	PCR with primers 6192/5645 from LmjFV1 genomic DNA, digested with BglII and inserted into BglII site of pIRINEO
pIRINEO-MAR-HA	B7322	LmjFUT1 mutant MAR-FUT1-HA	PCR with primers 6192/5645 from LmjFV1 genomic DNA, digested with BglII and inserted into BglII site of pIRINEO
pIRINEO-MTP-HA	B7299	mutant MTP-HA with mutated MTP	PCR with primers 6192/5645 from LmjFV1 genomic DNA, digested with BglII and inserted into BglII site of pIRINEO
pIRINEO-BLOCK-HA	B7326	mutant BLOCK-HA with blocked MTP	<i>FTK1</i> and <i>FUT1</i> were PCR amplified using primer pairs 2511/5981 and 6794/5645; products were mixed and amplified using primers SMB 2577/5645; large product, digested with BglII, and inserted into BglII site of pIRINEO
pIRINEO-CAT-HA	B7329	<i>Leishmania</i> expression vector for LmjFUT1 catalytic mutant CAT-HA	K298A site directed mutant using primer 5895 with pGEM-FUT1; released by BglII and inserted into BglII site of pIRINEO
pGEM-FUT2	B6553	LmjFUT2 ORF donor	PCR with primers 3990/3958 from LmjFV1 genomic DNA, insert by 1A cloning into pGEM-T
pIRISAT-FUT2	B6553	<i>Leishmania</i> expression vector for LmjFUT2	insertion of BglII-digested ORF from pGEM-FUT2 into BglII site of pIRISAT
pGEM-SCAL	B6476	LmjSCAL ORF donor	PCR with primers 3840/3841 from LmjFV1 genomic DNA, insert by 1A cloning into pGEM-T
pXNGSAT-SCAL	B6554	<i>Leishmania</i> expression vector for LmjSCAL	insertion of BglII digested ORF from pGEM-SCAL into BglII site of pXNGSAT
<u><b>knockout constructs</b></u>			
pGEM-FUT1-SAT	B7081	pGEM-1 containing Δfut1::SA1 targeting fragment	note: fusion PCR was performed as described by Murta <i>et al</i> 2009 <i>Molec. Micro.</i> 71:1386
pGEM-FUT1-HYG	B7080	pGEM-1 containing Δfut1::HYG targeting fragment	Fusion PCR product bearing FUT1 5' flanking region (primers 3763/5321), SAT1 ORF (primers 2630/2631), and 3' flanking region (primers 3765/3766), inserted in fusion PCR product bearing FUT1 5' flanking 900 nt (primers 3763/5321), HYG ORF (primers 2561/2662), and 3' flanking 700 nt (primers 3765/3766)
pGEM-FUT1-PAC	B7079	pGEM-1 containing Δfut1::PAC targeting fragment	Fusion PCR product bearing FUT1 5' flanking 900 nt (primers 3763/5321), PAC ORF (primers 2557/2558), and 3' flanking 700 nt (primers 3765/3766)
pGEM-FUT2-HYG	B7226	pGEM-T containing Δfut2::HYG targeting fragment	Fusion PCR product bearing FUT1 5' flanking region with primers 3763/5321, HYG ORF (primers 2561/2562), and 3' flanking region (primers 3769/3770)
pGEM-FUT2-PAC	B6548	pGEM-T containing Δfut2::PAC targeting fragment	inserted in pGEM-T; released by BamHI_HindIII
pGEM-SCAL-HYG	B6438	pGEM-T containing Δscal::HYG targeting fragment	Fusion PCR product bearing FUT1 5' flanking region with primers 3763/5321, HYG ORF (primers 2561/2562), and 3' flanking region (primers 3769/3770)
pGEM-SCAL-BSD	B6475	pGEM-T containing Δscal::BSD targeting fragment	inserted in pGEM-T; released by BamHI_HindIII digestion
<u><b>constructs for expression of WT and mutant LmjFUT1 in E. coli</b></u>			
pGEX-FUT1	B7230	pGEX derivative containing FUT1; Amp <sup>R</sup>	FUT1 ORF from pIRINEO-FUT1-HA was released by BglII digestion and inserted into BamHI site of pGEX-3X
pGEX-CAT-MUT	B7600	pGEX derivative containing mutant FUT1 (R297A); Amp <sup>R</sup>	FUT1(R297A) ORF from pIRINEO-CAT-HA was released by BglII digestion and inserted into BamHI site of pGEX-3X
pGEX-MTP-MUT	B7604	pGEX derivative containing mutant FUT1 (ΔGlu replaced first two Arg); Amp <sup>R</sup>	FUT1 ORF from pIRINEO-MTP-MUT-HA was released by BglII digestion and inserted into BamHI site of pGEX-3X
pET-BLOCK-MUT	B7632	pET16B derivative containing P1R1-FUT1; Amp <sup>R</sup>	P1R1-FUT1 was PCRed from pIRINEO-BLOCK-HA with primers 7693/3956, digested with NdeI_BalII and inserted into Nde-BamHI digested pET16b

Table S2. Oligonucleotide primers

Guo et al 2021

Primer number	Sequence (5'-3')	added restriction sites	Purpose
SMB2555	GGTAACGGTGC GGCTGACG CCACCATGGGCAAGCCTTTGTCTCA		forward primer to amplify <i>BSD</i> with linker at 5'
SMB2556	CGAGATCCCACGTAAGGTGC TTAGCCCTCCCACACATAACCAGAG		reverse primer to amplify <i>BSD</i> with linker at 5'
SMB2557	GGTAACGGTGC GGCTGACG CCACCATGACCGAGTACAAGCCC		forward primer to amplify <i>PAC</i> with linker at 5'
SMB2558	CGAGATCCCACGTAAGGTGC TCAGGCACCGGGCTTGCG		reverse primer to amplify <i>PAC</i> with linker at 5'
SMB2561	GGTAACGGTGC GGCTGACGCCACCATGAAAAGCCTGAACTC		forward primer to amplify <i>HYG</i> with linker at 5'
SMB2562	CGAGATCCCACGTAAGGTGCCTATTCTTTGCCCTCG		reverse primer to amplify <i>HYG</i> with linker at 5'
SMB2577	TTAGATCTCCACCATGACTGCTCCGACCGTGC	BglII	forward primer to amplify ORF of <i>PTR1</i>
SMB2601	ATCCAATGTTTCCGCCACCTGCTC		l-SAT FUT1 primer e (Fig. S3)
SMB2609	TACTCTCGGCGGCATTGACCTGTT		r-SAT primer f (Fig. S3)
SMB2630	GGTAACGGTGC GGCTGACGCCACCATGAAGATTTCCGGTGATCC		forward primer to amplify <i>SAT</i> with linker at 5'
SMB2631	CGAGATCCCACGTAAGGTGCTTAGCGTCATCCTGTGCTCC		reverse primer to amplify <i>SAT</i> with linker at 5'
SMB2888	ACGTCGAGTGCCGAAGGAC		r-PAC primer h (Fig. S3)
SMB2889	ACCGTGGGCTTGTAACGCG		l-PAC primer g (Fig. S3)
SMB3176	CAGCAGCCCTCTATATACCCGC		episomal pXNG-FUT forward primer (Fig. S3)
SMB3759	AAGCTTAGTTCGACAGCAGCCAAAGC	HindIII	forward primer to amplify 5' flanking region of <i>SCAL</i> with linker at 5'
SMB3760	CGTCAGCCCCGACCGTTACC GATGATGACCAATAATGGC		reverse primer to amplify 5' flanking region of <i>SCAL</i> with linker at 5'
SMB3761	GCACCTTACGTGGGATCTCG GCTTCGCGACCCAGCCTCGAGCC		forward primer to amplify 3' flanking region of <i>SCAL</i> with linker at 5'
SMB3762	GGATCCGAGGAAGGTGGAGAGGGAGC	BamHI	reverse primer to amplify 3' flanking region of <i>SCAL</i> with linker at 5'
SMB3763	AAGCTTCGGACGTGTGGGCTTCTGTTCTG	HindIII	forward primer to amplify 5' flanking region of <i>LmjFUT1</i>
SMB3765	GCACCTTACGTGGGATCTCG TCGAGGTGAACCGAGGGAGG		forward primer to amplify 3' flanking region of <i>LmjFUT1</i> with linker at 5'
SMB3766	GGATCCATATCAAGGTGACGGGGAGT	BamHI	reverse primer to amplify 3' flanking region of <i>LmjFUT1</i>
SMB3767	AAGCTTCTCGCTACATTGCCCGTGTA	HindIII	forward primer to amplify 5' flanking region of <i>LmjFUT2</i>
SMB3769	GCACCTTACGTGGGATCTCG CATCATGCCCCGAGTACGC		forward primer to amplify 3' flanking region of <i>LmjFUT2</i> with linker at 5'
SMB3770	GGATCCGGGCGCCGCGGACGAAGAAG	BamHI	reverse primer to amplify 3' flanking region of <i>LmjFUT2</i>
SMB3791	CACGGGATCCGTCGCTCTGCCGCTCTGTTGGCA		RT-PCR to identify correct start codon of <i>LmjFUT2</i>
SMB3796	GCACGCCGTAATGACCGAGG		episomal pXNG-FUT reverse primer (Fig. S3)
SMB3839	CCGCGCCGCGCACAGTGACGATAACAAGG		reverse primer for FUT2 ORF left side (Fig. S2)
SMB3840	CCCTGATCACCACCATGCAGGACATCGTTCAACCC	BclI	forward primer to amplify ORF of <i>LmjSCAL</i>
SMB3841	CCCTGATCATCACATGTAACCTTGTAACGCA	BclI	reverse primer to amplify ORF of <i>LmjSCAL</i>
SMB3955	CCCAGATCTCCACCATGAGAGCTTCTGCTCGGATGCG	BglII	forward primer to amplify ORF of <i>LmjFUT1</i>
SMB3956	CCCAGATCTTCAGATGAGTATCCATCCAGGG	BglII	reverse primer to amplify ORF of <i>LmjFUT1</i>
SMB3957	CCCAGATCTCCACCATGATGAAGCGTCGTACAGGCG	BglII	forward primer for FUT2 ORF right side (Fig. S2)
SMB3958	CCCAGATCTTTAGCGCCCCCTGAAGCCCCGCG	BglII	reverse primer for pXNGPHLEO-FUT2 ORF right side (Fig. S2)
SMB3987	GGTCAGCCCGCACCGTTACC GCAGCATCGCTCGTGTCGATGTAGC		reverse primer to amplify 5' flanking region of <i>LmjFUT2</i> with linker sequence at 5'
SMB3988	GGGTGCTTTTGTGCTGACTCGC		l-SAT FUT1 primer a = l-PAC = l-WT (Fig. S3)
SMB3990	CCCAGATCTCCACCATGCCTGATAATAGATACGGC	BglII	forward primer for pXNGPHLEO-FUT2 ORF left side (Fig. S2)
SMB5321	GGTCAGCCCGCACCGTTACC GGACCGCGACGGCGCGTGAGCAATTGAGC		reverse primer to amplify 5' flanking region of <i>LmjFUT1</i> with linker sequence at 5'
SMB5511	ACTGTATAGAGGACGCGTTC		r-SAT primer d - r-PAC = r-WT (Fig. S3)
SMB5642	CCCGGGCCACCATGAGCAACAAGGCATTCTTAAC	XmaI	forward primer to amplify ORF of <i>TbFUT1</i>
SMB5643	CCCGGGCTACAGGAGGATCCAGTCGTTAC	XmaI	reverse primer to amplify ORF of <i>TbFUT1</i>
SMB5645	AGATCTTCAAGCGTAATCTGGAACATCGTATGGGTAGATGAGTATCCATCCAGGG	BglII	reverse primer to amplify ORF of <i>LmjFUT1</i> with HA tag
SMB5895	GGCCTGCACGTGGCGCGCGGCGACTA		site-directed -mutagenesis primer for <i>LmjFUT1</i>
SMB5922	AGATCTCCACCATGGGCAACCAGCTTTTCTCTCG	BglII	forward primer to amplify ORF of <i>LmjFUT1</i> using the third start codon
SMB5966	AGATCTCCACCATGCGTGCTGCCGTCGCAGCAGCGAC	BglII	forward primer to amplify ORF of <i>LmjFUT1</i> using the second start codon
SMB6192	AGATCTCCACCATGTCGAAAGCAGCCTCACAAC	BglII	forward primer to amplify ORF of <i>LmjFUT1</i> from starting from MSK
SMB6193	CCCGGGTCAAGCGTAATCTGGAACATCGTATGGGTACAGGAGGATCCAGTCGTTAC	XmaI	reverse primer to amplify ORF of <i>TbFUT1</i> with HA tag
SMB6741	AGATCTCCACCATGgagGCTTCTGCTgagATGCGTGCTGCCGTCGCAGCAGCG	BglII	forward primer to amplify ORF of <i>LmjFUT1</i> using two GLU codon (gag) to replace ARG codon(AGA)
SMB6761	AGATCTCCACCATGAAAGCAGCCTCACAACCTAAC	BglII	forward primer to amplify ORF of <i>LmjFUT1</i> from starting from MKA
SMB6762	AGATCTCCACCATGGCAGCCTCACAACCTAACATTG	BglII	forward primer to amplify ORF of <i>LmjFUT1</i> from starting from MAR
SMB6794	ATGAGAGCTTCTGCTCGGATGCGTG		forward primer to amplify ORF of <i>LmjFUT1</i>
SMB6795	CACGCATCCGAGCAGAAGCTCTC ATGGCCCGGGTAAGGCTG		reverse primer to amplify ORF of <i>PTR1</i> with complementary sequence of 6794
SMB7693	GGAATTCATATGACTGCTCCGACCGTGCCG	NdeI	forward primer to amplify ORF of <i>PTR1</i>