

Evolutionary rates of testes-expressed genes differ between monogamous and promiscuous *Peromyscus* species

Authors: Landen Gozashti^{1,2}, Russell Corbett-Detig³ and Scott W. Roy⁴

Affiliations:

¹Department of Organismic & Evolutionary Biology and Museum of Comparative Zoology, Harvard University, Cambridge, MA, 02138 USA

²Howard Hughes Medical Institute, Cambridge, MA, 02138 USA

³Department of Biomolecular Engineering and Genomics Institute, University of California Santa Cruz, Santa Cruz, CA 95064, USA

⁴Department of Biology, San Francisco State University, San Francisco, CA, 94117 USA

Abstract

Reproductive proteins, including those expressed in the testes, are among the fastest evolving proteins across the tree of life. Sexual selection on traits involved in sperm competition is thought to be a primary driver of testes gene evolution and is expected to differ between promiscuous and monogamous species due to intense competition between males to fertilize females in promiscuous lineages and lack thereof in monogamous ones. Here, we employ the rodent genus *Peromyscus* as a model to explore differences in evolutionary rates between testis-expressed genes of monogamous and promiscuous species. We find candidate genes that may be associated with increased sperm production in promiscuous species and gene ontology categories that show patterns of molecular convergence associated with phenotypic convergence in independently evolved monogamous species. Overall, our results highlight possible molecular correlates of differences in mating system, which can be contextualized in light of expected selective pressures.

Introduction

Reproductive genes exhibit increased levels of sequence divergence among species relative to genes with no implications in reproductive processes (Swanson and Vacquier 2002; Clark, Aagaard, and Swanson 2006). This pattern is ubiquitous across diverse lineages, spanning from microbes to mammals (Makalowski and Boguski 1998; Armbrust and Galindo 2001; Wik,

Karlsson, and Johannesson 2008; Sato et al. 2002; Vacquier and Swanson 2011; Torgerson, Kulathinal, and Singh 2002). Among these rapidly evolving genes are those expressed in the male testes, which are thought to be driven by sexual selection on specific traits involved in sperm competition (Ramm and Stockley 2009; Torgerson, Kulathinal, and Singh 2002; Harrison et al. 2015; Moyle, Wu, and Gibson 2020; Swanson and Vacquier 2002; A. Civetta and Singh 1995; Firman and Simmons 2010a; Parker 1970; Rice and Holland 1997). Since reproductive success is essential to fitness, observed increased rates of evolution in testes expressed genes are usually the result of positive selection (Ramm et al. 2008; Teng et al. 2017; Ramm and Stockley 2009), but could also be explained by relaxed selection (Dapper and Wade 2016).

Mating system, the general pattern by which males and females mate within a species, is expected to drive differences in rates of evolution of testes expressed genes (Lüpold et al. 2016; Clutton-Brock 2017). The vast majority of mammalian species are promiscuous, meaning that females mate with multiple males and vice versa (Garcia-Gonzalez 2017). However, genetic monogamy (where males and females only mate with one individual for life) has evolved multiple times independently across mammalian lineages (Lukas and Clutton-Brock 2013). Promiscuous and monogamous species often exhibit morphological, physiological and behavioral differences associated with mate fidelity which can be contextualized in light of selection (Ambaryan, Voznessenskaya, and Kotenkova 2019; Wey, Vrana, and Mabry 2017; Stanyon and Bigoni 2014; Tidière et al. 2015; Dapper and Wade 2016; Alberto Civetta and Ranz 2019). Oftentimes morphological and physiological differences are associated with the male testes and sperm performance, since in contrast with monogamous species, promiscuous males are constantly competing to fertilize females (Dapper and Wade 2016; Firman and Simmons 2010a). Faster, more viable sperm and higher sperm counts yield an increased chance of fertilization and are advantageous for promiscuous species (Pizzari 2006). Thus, promiscuous males often possess larger testes and produce more abundant and more competitive sperm than monogamous males, even in the case of recently diverged species (Fisher et al. 2018; Firman and Simmons 2010a; Heske and Ostfeld 1990; Claw et al. 2018; Shuster 2009). However, the genetic basis of morphological and physiological differences related to differences in mating system remain largely unexplored.

Social/sexual monogamy has evolved at least twice independently within the rodent genus *Peromyscus* (Figure 1) (Turner et al. 2010; Bedford and Hoekstra 2015), with behavioral and physical traits differing consistently between monogamous and promiscuous *Peromyscus* species (Fisher and Hoekstra 2010; Fisher et al. 2014, 2016, 2018; Bendesky et al. 2017). *Peromyscus* is a powerful model for interrogating the drivers of convergent evolution and adaptation due to its well-resolved phylogeny (Greenbaum et al. 2017; Sullivan et al. 2017), well documented convergence of phenotypes (Steiner et al. 2009; Manceau et al. 2010; Bedford and Hoekstra 2015), and extensive ecological, morphological, and behavioral variation (Gering et al. 2009; Fisher and Hoekstra 2010; Shorter et al. 2012; Bedford and Hoekstra 2015; Guralnick et al. 2020). Here, we use a combination of evolutionary rate modeling and gene expression analysis to identify specific genes that may be associated with increased sperm production in the

promiscuous *P. maniculatus* and gene ontology categories that show patterns of molecular convergence associated with phenotypic convergence in two independently evolved monogamous species: *P. polionotus* and *P. eremicus* (Foltz 1981; Birdsall and Nash 1973; Rosenfeld et al. 2013; Xia and Millar 1991).

Methods

Obtaining and reconstructing transcriptomic data

We employed a conservative but robust pipeline for detecting signatures of parallel evolutionary rates in transcripts of *P. polionotus* and *P. eremicus* relative to *P. leucopus* and *P. maniculatus*. First, we obtained *P. maniculatus*, *P. polionotus*, *P. leucopus*, and *P. eremicus* testes transcriptome data from (Lindsey et al. 2020), (<https://www.ncbi.nlm.nih.gov/bioproject/584485>), (<https://datadryad.org/stash/dataset/doi:10.5061/dryad.r8ns3>) and (Kordonowy and MacManes 2016) respectively. Conveniently, a testes specific transcriptome was previously assembled for *P. eremicus* (Kordonowy and MacManes 2016). For the other three species, we aligned each species' testes transcriptome data to reference CDS data (GCF_000500345.1 for *P. maniculatus* and *P. polionotus* since no reference exists for *P. polionotus* and *P. maniculatus* is its closest relative with a reference CDS file, and GCF_004664715.2 for *P. leucopus*) using *hisat2* (Kim, Langmead, and Salzberg 2015) with default parameters and called variants using *bcftools* with default parameters. We then reconstructed each transcript in a variant aware manner using a custom python script that replaces the reference allele at a given site with any alternate allele at higher frequency in the considered testes dataset (see <https://github.com/lgozasht/Peromyscus-reproductive-genetic-differences>).

Finding homologous genes between species

Once we possessed reconstructed transcriptomes for each species, we performed an all vs. all BLAST (Altschul et al. 1990) with a minimum percent identity of 90 to identify putative homologous transcripts between species. We filtered our BLAST output for a minimum 80 percent overlap relative to each transcript length and concatenated all BLAST output into one file. Then, we employed *silixx* (Miele, Penel, and Duret 2011), a graph theory based clustering software, to cluster transcripts into families of highly similar sequences from homologous genes. We filtered for families that contained transcripts from all four species and included the transcript with the lowest e value when a species possessed multiple candidate transcripts for a given family. Through this process we identified 942 transcripts expressed in reproductive tissue that shared homology between all 4 of our considered species.

Generating and curating PAML input files

We employed the classic program *PAML* (Phylogenetic Analysis by Maximum Likelihood) (Yang 2007) to search for shared signatures of evolutionary rates in *P. eremicus* and *P. polionotus* relative to *P. leucopus* and *P. maniculatus*. For each transcript cluster, we used *MAFFT* (Katoh and Standley 2013) to generate a multiple sequence alignment and *IQ-TREE* (Minh et al. 2020) to infer a maximum likelihood based tree, as required for *PAML* input and confirmed that tree topology remained consistent. Since indels and poor alignment quality can impair *PAML* accuracy and functionality, we performed additional curation and filtering on our input alignments. We used the tool *Alignment_Refiner_v2*, (see https://github.com/dportik/Alignment_Refiner) (Young et al. 2019) to trim alignments above an overall missing data threshold of 1% and abandoned clusters with greater than 50 gaps in a particular sequence or 100 total gaps thereafter. We also ignored alignments containing sequences with lengths not divisible by 3. We were left with 199 transcripts suitable for *PAML* input after our stringent filtering and curation.

Comparing evolutionary rates of transcripts in P. eremicus and P. maniculatus

Short branch lengths between *P. maniculatus* and *P. polionotus* make it challenging to conduct accurate pairwise *dn/ds* comparisons (Mugal, Wolf, and Kaj 2014; Yang 2007; Kryazhimskiy and Plotkin 2008), so instead we performed comparisons between *P. maniculatus* and *P. eremicus*. For each transcript cluster, we applied *PAML* first with a null model (*model* = 2, see <http://abacus.gene.ucl.ac.uk/software/pamIDOC.pdf>) in which *dN/dS* differs in *P. maniculatus* and *P. eremicus* relative to *P. polionotus* and *P. leucopus* then with an alternative model (*model* = 2, see <http://abacus.gene.ucl.ac.uk/software/pamIDOC.pdf>) in which each *dN/dS* differs between *P. maniculatus* and *P. eremicus* relative to *P. polionotus* and *P. leucopus*. We then calculated log likelihood ratios using our *null* and *alternative* output and performed likelihood ratio tests for each transcript cluster. After further manual alignment quality filtering and applying a false-discovery rate correction for multiple testing (Benjamini and Hochberg 1995), we were left with 7 transcripts under significant differences in rates of evolution for downstream analysis ($\alpha = .05$).

Differential expression analysis of P. eremicus and P. maniculatus

We obtained testes RNA data from three runs of separate replicates for *P. eremicus* (SRA run excessions: ERR1353571, ERR1353572, and ERR1353573) and one run of pooled replicates for *P. maniculatus* (SRA run excession: SRR8587279) and aligned to respective testes transcriptomes using *hisat2* (Kim, Langmead, and Salzberg 2015). Next, we obtained read counts for each transcript using *htseq-count* (Anders, Pyl, and Huber 2014) and calculated *RPKM* for each transcript. We calculated delta *RPKM* for homologous transcripts between *P. eremicus* and *P. maniculatus*. Then, we performed independent Mann–Whitney U tests for delta *RPKM*s of transcripts corresponding to each gene in which we observed significant differences in evolutionary rates between *P. eremicus* and *P. maniculatus*. We aggregated p-values for

transcripts corresponding to each gene using Fisher's combined probability to obtain a final p-value for each gene, in similarity to a method described in (Yi et al. 2018).

Comparing parallel rates of evolution between monogamous and promiscuous species

We used *PAML* first to compute the likelihood of a null model (*model* = 0, see <http://abacus.gene.ucl.ac.uk/software/pamlDOC.pdf>) in which *dn/ds* is equal across all branches of the tree with our alternative model. Then we fit a branch model (*model* = 2, see <http://abacus.gene.ucl.ac.uk/software/pamlDOC.pdf>) in which the *dn/ds* ratio is allowed to differ between monogamous and promiscuous lineages, but where the two ratios are constrained to be identical across all monogamous or promiscuous branches. We included the monogamous *P. eremicus* and *P. polionotus* and the promiscuous *P. maniculatus* and *P. leucopus* for this analysis. To assess significance, we used a likelihood ratio test, which is χ^2 distributed with a single degree of freedom.

Finding evolutionary trends in different ontologies

We interrogated trends of evolutionary rates by aligning each gene that passed our upstream filtering to the *Mus musculus* GRCm38 genome (Genbank accession GCF_000001635.26) and cross referencing the MGI ontology database (see <http://www.informatics.jax.org/mgihome/projects/aboutmgi.shtml>). We then grouped genes by mouse gene ontology (GO) terms. For each group of genes, we performed a two-sided binomial test with regard to the number of genes evolving at slower (or faster) rates in monogamous species relative to promiscuous species. For our null, we used the proportion of genes evolving at slower (or faster) rates between monogamous and promiscuous species among all considered loci: $P = .519$. We filtered for groups in which we observed a significant trend of different evolutionary rates ($\alpha < 0.05$). To determine that these signatures of correlated evolutionary rates within GO categories are not driven by species-specific effects, we performed a test for idiosyncratic evolution in each species. To do this, for each species, we ran *PAML* with a branch model in which that species possessed its own α that differed from the other three species.

Results and Discussion

We employ a maximum likelihood approach to compare evolutionary rates of transcripts expressed in the testes of the monogamous *P. eremicus* and the promiscuous *P. maniculatus*. Our analysis reveals 6 genes exhibiting significant differences in evolutionary rates between species. Intriguingly, 5 of these are implicated in spermatogenesis and are evolving faster in *P. maniculatus*: *Znf644*, *KDM3A*, *Ddx25*, *Spata16* and *ESSBP* (Epididymis Secretory Sperm Binding Protein) (Figure 2, Table 1) (Dam et al. 2007; Liu et al. 2010; Tsai-Morris et al. 2010; Souza et al. 2017; Wilson et al. 2017). Sequence level changes leading to increased sperm abundance or competitive ability might be favored by selection in promiscuous species due to the selective pressures of mate competition and might quickly reach fixation. Thus, we hypothesize

that these genes may have experienced positive selection in *P. maniculatus*. Consistent with this hypothesis, previous studies have suggested that sperm production is sensitive to local adaptation in light of the pressures associated with competition (Ramm and Stockley 2009; Winkler et al. 2019; Lindsey et al. 2020).

Arhgef18, the other gene with a significantly different evolutionary rate between species lacks known reproductive implications. Although its role in spermatogenesis remains unexplored, Arhgef18 maintains apico-basal polarity, localization of tight junctions and cortical actin, and thus plays a role in cellular morphology and cell-cell interactions, which are essential to sperm cell organization and sertoli-spermatid interactivity during spermatogenesis (Gao and Cheng 2016; Wong and Cheng 2009). It is also evolving rapidly in *P. maniculatus* and thus may also be under positive selection.

Differential gene expression analysis lends further support to the evidence for positive selection of Spata16 and ESSBP. We calculated delta RPKMs for homologous transcripts between species, focusing specifically on the 6 genes exhibiting significantly different rates of evolution. Interestingly, we find that ESSBP and Spata16 exhibit significantly increased expression in *P. maniculatus* (*Mann-Whitney U P* = 0.0294 and 0.0376 respectively). Although evolutionary rate is generally negatively correlated with gene expression levels within species, the relationship between sequence divergence and expression divergence between species has been shown to be positively correlated in mammals (Warnefors and Kaessmann 2013; Liao and Zhang 2006). Additionally, changes in gene expression levels have been hypothesized to result from positive selection (Jordan, Mariño-Ramírez, and Koonin 2005), further highlighting the possibility that ESSBP and Spata16 might be under positive selection in *P. maniculatus* as a result of their roles in spermatogenesis.

Marginally increased evolutionary rates of genes grouped by ontology suggests molecular convergence of genes involved in sperm competitive ability as a result of relaxed selection associated with the evolution of monogamous behaviors. We used branch models to compare shared rates of evolution between two species in which monogamy evolved independently, *P. eremicus* and *P. polionotus* and two relatively divergent promiscuous *Peromyscus* species, *P. maniculatus* and *P. leucopus*. Due to the short branch lengths separating *P. maniculatus* and *P. polionotus*, branch tests using individual genes may be unreliable. Therefore, rather than focusing on significantly different rates between independent homologous loci, we used MGI's gene ontology database (Smith and Eppig 2009) to cluster all considered genes based on ontology, and explored trends of shared evolutionary rates between genes in monogamous species relative to promiscuous species with involvement in particular ontologies. We find significant differences in evolutionary trends between monogamous and promiscuous species in eight gene ontology categories, seven of which are important for sperm function (Table 2, Figure 3). We find that genes within ontologies with implications in sperm function generally have increased evolutionary rates in monogamous species. In fact, all considered genes involved in “flagellated sperm motility,” “motile cilium,” “centrosome” and “cell projection” are evolving at faster rates in monogamous species. One possible explanation for this is that monogamous

species exhibit reduced selective constraint on genes integral to sperm function. Mutations are likely filtered more frequently by purifying selection in promiscuous species than in monogamous species where negative selection is relaxed (Firman and Simmons 2010a). An alternative explanation is positive selection on these genes in monogamous species. However, in contrast with the expected observation for loci under positive selection, we do not find significant differences in evolutionary rates between monogamous and promiscuous species when we compare genes within these ontologies independently, and instead find that they exhibit dN/dS values closer to 1. These observations may constitute a molecular signature of convergent evolution in protein evolutionary rates for genes involved in sperm competitiveness in monogamous species.

Our results illuminate the molecular correlates of changes in reproductive functions associated with changes in mating systems. Sperm abundance, motility and morphology are critical for fertility (Sharpe 2012; Baptissart et al. 2013). We identify six genes that exhibit significantly increased evolutionary rates in the promiscuous *P. maniculatus* relative to the monogamous *P. eremicus*. Five of these are known to be essential to spermatogenesis and the sixth has plausible connections. Additionally, two of these genes also exhibit significantly increased expression in *P. maniculatus*, providing additional evidence that these loci experience positive selection *P. maniculatus* in light of competition between males to fertilize females. Consistent with these results, previous studies have found that sperm in the promiscuous *P. maniculatus* exhibit adaptive morphological traits and increased abundance when compared to that of monogamous *Peromyscus* species (Fisher et al. 2016).

Furthermore, we observe that genes implicated in sperm function exhibit slower evolutionary rates in two independently evolved monogamous species relative to promiscuous ones when clustered by ontology, highlighting the possible role of relaxed selection in propelling the molecular convergence of genes integral to sperm competitiveness. However, future work is required to investigate roles of selection, and we propose that these genes serve as candidates for future studies on adaptation and convergent evolution with regard to reproductive behavior. Future studies should include nucleotide and transcript-abundance polymorphism data to enable direct estimation of the mode of selection and increased sampling of monogamous species across many independent origins in diverse lineages to test for molecular convergence associated with differences in mating system.

Acknowledgments

The authors thank Jenny Chen for her input on optimizing statistical analyses. The authors declare no conflicts of interest.

Author Contributions

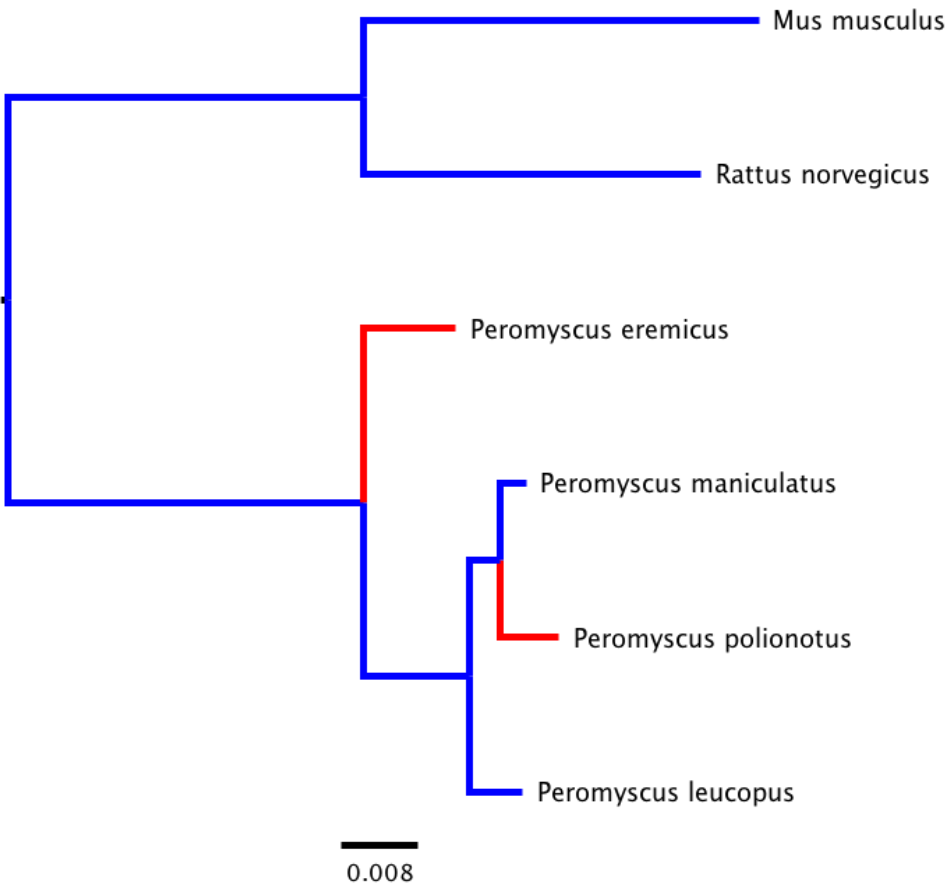


Figure 1: Phylogenetic relationship between our four considered *Peromyscus* species with the addition of *Mus musculus* and *Rattus norvegicus* as outgroups. We note that we only include a small subset of known *Peromyscus* species in our phylogeny. Our tree was produced with *IQ-TREE* (Minh et al. 2020) using 15 concatenated orthologs in each respective species. Genetic distances are measured in units of the number of base substitutions in proportion to alignment length (Sievers et al. 2011). Blue colored nodes represent promiscuity and red colored nodes represent monogamy (Shurtliff, Pearse, and Rogers 2005; Xia and Millar 1991; Costa et al. 2016). Monogamy has evolved independently at least twice in the *Peromyscus* genus (Turner et al. 2010; Bedford and Hoekstra 2015).

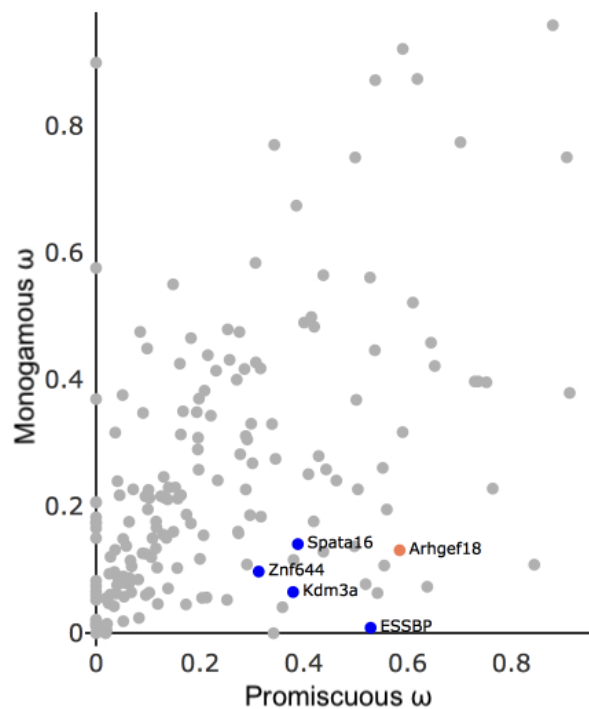


Figure 2: Respective evolutionary rates (ω) for genes exhibiting different evolutionary rates between in the monogamous *P. eremicus* and the promiscuous *P. maniculatus*. Colored points correspond to genes exhibiting statistically significant differences in evolutionary rates. Blue points correspond to genes that play crucial roles in spermatogenesis.

Gene	Relative Evolutionary Rate	Involvement in Reproduction	Q value	Source for sexual implication
KDM3A	P>M	Spermatogenesis	<0.0001	(Wilson et al. 2017)
Spata16	P>M	Spermatogenesis	0.0006	(Chang et al. 2004)
Ddx25	P>M	Spermatogenesis	0.0020	(Tsai-Morris et al. 2010)

Znf644	P>M	Spermatogenesis	0.0002	(Liu et al. 2010)
ESSBP	P>M	Spermatogenesis	<0.0001	(Souza et al. 2017)
Arhgef18	P>M	Cell morphology and cell-cell interactions	<0.0001	(Niu et al. 2003)

Table 1: Genes exhibiting significantly different rates of evolution in considered monogamous and promiscuous species. Column 1 displays gene name. Column 2 provides trend of evolution (* in monogamous species relative to promiscuous species). Column 3 summarizes respective known involvement in reproduction, column 4 provides FDR corrected X^2 P-values, and column 5 contains sources.

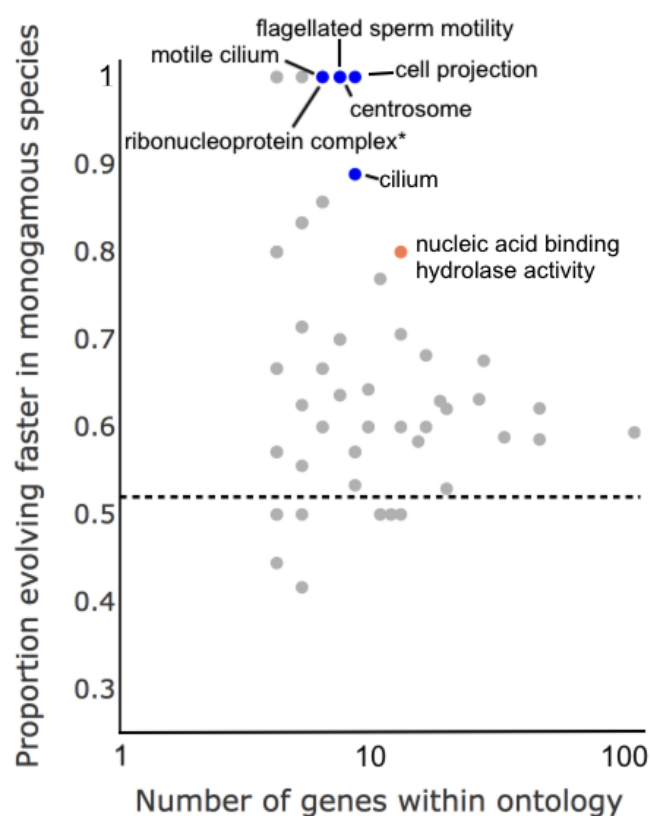


Figure 3: Proportion of genes evolving faster in monogamous species relative to the number of genes within each respective ontology cluster. The seven ontology groups are colored orange or blue (Binomial test $\alpha = 0.05$). The five Ontology groups with significant trends of evolution in monogamous species relative to promiscuous ones and known specific implications in sperm performance are colored blue. Other significant ontologies are colored in orange. The dotted line

represents the null expected proportion of genes evolving faster in monogamous species. The “*” denotes an ontology group that is not specifically involved in sperm performance but whose data point overlaps with an ontology group that is.

MGI Ontology	Relative Evolutionary Rate	Sexual Implication	P value	Source for sexual implication
cell projection	M>P	Sperm function (motility)	0.0078	(Avidor-Reiss, Ha, and Basiri 2017)
centrosome	M>P	Sperm function (motility)	0.0078	(G. Schatten and Stearns 2015; Terada et al. 2010; H. Schatten, Rawe, and Sun 2011; Gunes et al. 2020)
cilium	M>P	Sperm function (motility)	0.0390	(Gadella 2008; Yuan et al. 2019; Sironen et al. 2020; Inaba and Mizuno 2016)
flagellated sperm motility	M>P	Sperm function (motility)	0.0156	(Firman and Simmons 2010b; Vladić, Afzelius, and Bronnikov 2002; Lüpold et al. 2009; Fisher et al. 2016)
hydrolase activity	M>P	NA	0.0351	NA
motile cilium	M>P	Sperm function (motility)	0.0312	(Yuan et al. 2019; Inaba and Mizuno 2016; Sironen et al. 2020; Gadella 2008)

nucleic acid binding	M>P	NA	0.0352	NA
ribonucleoprotein complex	M>P	NA	0.0313	NA

Table 2: MGI Ontology categories in which we observe differences in trends of evolutionary rates. Column 1 presents ontology categories. Column 2 provides trends in evolutionary rate (Monogamous relative to promiscuous). Column 3 provides respective sexual implications, column 4 contains P values (*binomial test*) and column 5 contains references.

References

- Altschul, S. F., W. Gish, W. Miller, E. W. Myers, and D. J. Lipman. 1990. "Basic Local Alignment Search Tool." *Journal of Molecular Biology* 215 (3): 403–10.
- Ambaryan, A. V., V. V. Voznessenskaya, and E. V. Kotenkova. 2019. "Mating Behavior Differences in Monogamous and Polygamous Sympatric Closely Related Species *Mus Musculus* and *Mus Spicilegus* and Their Role in Behavioral Precopulatory Isolation." *Russian Journal of Theriology* 18 (2): 67–79.
- Anders, Simon, Paul Theodor Pyl, and Wolfgang Huber. 2014. "HTSeq – A Python Framework to Work with High-Throughput Sequencing Data." *Cold Spring Harbor Laboratory*. <https://doi.org/10.1101/002824>.
- Armbrust, E. V., and H. M. Galindo. 2001. "Rapid Evolution of a Sexual Reproduction Gene in Centric Diatoms of the Genus *Thalassiosira*." *Applied and Environmental Microbiology* 67 (8): 3501–13.
- Avidor-Reiss, Tomer, Andrew Ha, and Marcus L. Basiri. 2017. "Transition Zone Migration: A Mechanism for Cytoplasmic Ciliogenesis and Postaxonal Centriole Elongation." *Cold Spring Harbor Perspectives in Biology* 9 (8). <https://doi.org/10.1101/cshperspect.a028142>.
- Baptissart, Marine, Aurélie Vega, Emmanuelle Martinot, and David H. Volle. 2013. "Male Fertility: Is Spermiogenesis the Critical Step for Answering Biomedical Issues?" *Spermatogenesis* 3 (2). <https://doi.org/10.4161/spmg.24114>.
- Benjamini, Yoav, and Yoel Hochberg. 1995. "Controlling the False Discovery Rate: A Practical and Powerful Approach to Multiple Testing." *Journal of the Royal Statistical Society. Series B, Statistical Methodology* 57 (1): 289–300.
- Birdsall, D. Alan, and David Nash. 1973. "Occurrence of Successful Multiple Insemination of Females in Natural Populations of Deer Mice (*Peromyscus maniculatus*)." *Evolution; International Journal of Organic Evolution* 27 (1): 106–10.
- Chang, Chawnsiang, Yen-Ta Chen, Shaoh-Der Yeh, Qingquan Xu, Ruey-Sheng Wang, Florian Guillou, Henry Lardy, and Shuyuan Yeh. 2004. "Infertility with Defective Spermatogenesis and Hypotestosteronemia in Male Mice Lacking the Androgen Receptor in Sertoli Cells." *Proceedings of the National Academy of Sciences of the United States of America* 101 (18): 6876–81.
- Civetta, Alberto, and José M. Ranz. 2019. "Genetic Factors Influencing Sperm Competition." *Frontiers in Genetics* 10 (September): 820.
- Civetta, A., and R. S. Singh. 1995. "High Divergence of Reproductive Tract Proteins and Their Association with Postzygotic Reproductive Isolation in *Drosophila melanogaster* and *Drosophila virilis* Group Species." *Journal of Molecular Evolution* 41 (6): 1085–95.
- Clark, Nathaniel L., Jan E. Aagaard, and Willie J. Swanson. 2006. "Evolution of Reproductive Proteins from Animals and Plants." *Reproduction* 131 (1): 11–22.
- Claw, Katrina G., Renee D. George, Michael J. MacCoss, and Willie J. Swanson. 2018. "Quantitative Evolutionary Proteomics of Seminal Fluid from Primates with Different Mating Systems." *BMC Genomics* 19 (1): 488.
- Clutton-Brock, Tim. 2017. "Reproductive Competition and Sexual Selection." *Philosophical Transactions of the Royal Society of London. Series B, Biological Sciences* 372 (1729). <https://doi.org/10.1098/rstb.2016.0310>.
- Costa, Federico, Jonathan L. Richardson, Kirstin Dion, Carol Mariani, Arsinoe C. Pertile, Mary K. Burak, James E. Childs, Albert I. Ko, and Adalgisa Caccone. 2016. "Multiple Paternity in the Norway Rat, *Rattus norvegicus*, from Urban Slums in Salvador, Brazil." *The Journal of Heredity* 107 (2): 181–86.
- Dapper, Amy L., and Michael J. Wade. 2016. "The Evolution of Sperm Competition Genes: The Effect of Mating System on Levels of Genetic Variation within and between Species." *Evolution; International Journal of Organic Evolution* 70 (2): 502–11.
- Firman, Renée C., and Leigh W. Simmons. 2010a. "Experimental Evolution of Sperm Quality via Postcopulatory Sexual

- Selection in House Mice.” *Evolution; International Journal of Organic Evolution* 64 (5): 1245–56.
- . 2010b. “Sperm Midpiece Length Predicts Sperm Swimming Velocity in House Mice.” *Biology Letters* 6 (4): 513–16.
- Fisher, Heidi S., Kristin A. Hook, W. David Weber, and Hopi E. Hoekstra. 2018. “Sibling Rivalry: Males with More Brothers Develop Larger Testes.” *Ecology and Evolution* 8 (16): 8197–8203.
- Fisher, Heidi S., Emily Jacobs-Palmer, Jean-Marc Lassance, and Hopi E. Hoekstra. 2016. “The Genetic Basis and Fitness Consequences of Sperm Midpiece Size in Deer Mice.” *Nature Communications* 7 (December): 13652.
- Foltz, David W. 1981. “Genetic Evidence for Long-Term Monogamy in a Small Rodent, *Peromyscus Polionotus*.” *The American Naturalist* 117 (5): 665–75.
- Gadella, B. M. 2008. “Sperm Membrane Physiology and Relevance for Fertilization.” *Animal Reproduction Science* 107 (3-4): 229–36.
- Gao, Ying, and C. Yan Cheng. 2016. “Does Cell Polarity Matter during Spermatogenesis?” *Spermatogenesis* 6 (2): e1218408.
- Garcia-Gonzalez, Francisco. 2017. “Promiscuity.” In *Encyclopedia of Animal Cognition and Behavior*, edited by Jennifer Vonk and Todd Shackelford, 1–7. Cham: Springer International Publishing.
- Gunes, Sezgin, Pallav Sengupta, Ralf Henkel, Aabed Alguraigari, Mariana Marques Sinigaglia, Malik Kayal, Ahmad Joumah, and Ashok Agarwal. 2020. “Microtubular Dysfunction and Male Infertility.” *The World Journal of Men’s Health* 38 (1): 9–23.
- Harrison, Peter W., Alison E. Wright, Fabian Zimmer, Rebecca Dean, Stephen H. Montgomery, Marie A. Pointer, and Judith E. Mank. 2015. “Sexual Selection Drives Evolution and Rapid Turnover of Male Gene Expression.” *Proceedings of the National Academy of Sciences of the United States of America* 112 (14): 4393–98.
- Heske, Edward J., and Richard S. Ostfeld. 1990. “Sexual Dimorphism in Size, Relative Size of Testes, and Mating Systems in North American Voles.” *Journal of Mammalogy* 71 (4): 510–19.
- Inaba, Kazuo, and Katsutoshi Mizuno. 2016. “Sperm Dysfunction and Ciliopathy.” *Reproductive Medicine and Biology* 15 (2): 77–94.
- Jordan, I. King, Leonardo Mariño-Ramírez, and Eugene V. Koonin. 2005. “Evolutionary Significance of Gene Expression Divergence.” *Gene* 345 (1): 119–26.
- Katoh, Kazutaka, and Daron M. Standley. 2013. “MAFFT Multiple Sequence Alignment Software Version 7: Improvements in Performance and Usability.” *Molecular Biology and Evolution* 30 (4): 772–80.
- Kim, Daehwan, Ben Langmead, and Steven L. Salzberg. 2015. “HISAT: A Fast Spliced Aligner with Low Memory Requirements.” *Nature Methods* 12 (4): 357–60.
- Kordonowy, Lauren, and Matthew MacManes. 2016. “Characterization of a Male Reproductive Transcriptome for *Peromyscus Eremicus* (Cactus Mouse).” *Cold Spring Harbor Laboratory*. <https://doi.org/10.1101/048348>.
- Kryazhimskiy, Sergey, and Joshua B. Plotkin. 2008. “The Population Genetics of dN/dS.” *PLoS Genetics* 4 (12): e1000304.
- Liao, Ben-Yang, and Jianzhi Zhang. 2006. “Evolutionary Conservation of Expression Profiles between Human and Mouse Orthologous Genes.” *Molecular Biology and Evolution* 23 (3): 530–40.
- Lindsey, Laramie L., Roy N. Platt, Caleb D. Phillips, David A. Ray, and Robert D. Bradley. 2020. “Differential Expression in Testis and Liver Transcriptomes from Four Species of *Peromyscus* (Rodentia: Cricetidae).” *Genome Biology and Evolution* 12 (1): 3698–3709.
- Liu, Yun-Qiang, Gang Bai, Hao Zhang, Dan Su, Da-Chang Tao, Yuan Yang, Yong-Xin Ma, and Si-Zhong Zhang. 2010. “Human RING Finger Protein ZNF645 Is a Novel Testis-Specific E3 Ubiquitin Ligase.” *Asian Journal of Andrology* 12 (5): 658–66.
- Lukas, D., and T. H. Clutton-Brock. 2013. “The Evolution of Social Monogamy in Mammals.” *Science* 341 (6145): 526–30.
- Lüpold, Stefan, Sara Calhain, Simone Immler, and Tim R. Birkhead. 2009. “Sperm Morphology and Sperm Velocity in Passerine Birds.” *Proceedings of the Royal Society B: Biological Sciences* 276 (1659): 1175–81.
- Lüpold, Stefan, Mollie K. Manier, Nalini Puniamoorthy, Christopher Schoff, William T. Starmer, Shannon H. Buckley Luepold, John M. Belote, and Scott Pitnick. 2016. “How Sexual Selection Can Drive the Evolution of Costly Sperm Ornamentation.” *Nature* 533 (7604): 535–38.
- Makalowski, W., and M. S. Boguski. 1998. “Evolutionary Parameters of the Transcribed Mammalian Genome: An Analysis of 2,820 Orthologous Rodent and Human Sequences.” *Proceedings of the National Academy of Sciences of the United States of America* 95 (16): 9407–12.
- Miele, Vincent, Simon Penel, and Laurent Duret. 2011. “Ultra-Fast Sequence Clustering from Similarity Networks with SiLiX.” *BMC Bioinformatics* 12 (April): 116.
- Minh, Bui Quang, Heiko A. Schmidt, Olga Chernomor, Dominik Schrempf, Michael D. Woodhams, Arndt von Haeseler, and Robert Lanfear. 2020. “IQ-TREE 2: New Models and Efficient Methods for Phylogenetic Inference in the Genomic Era.” *Molecular Biology and Evolution* 37 (5): 1530–34.
- Moyle, Leonie C., Meng Wu, and Matthew J. S. Gibson. 2020. “Reproductive Proteins Evolve Faster than Non-Reproductive Proteins among Solanum Species.” *Cold Spring Harbor Laboratory*. <https://doi.org/10.1101/2020.11.30.405183>.
- Mugal, Carina F., Jochen B. W. Wolf, and Ingemar Kaj. 2014. “Why Time Matters: Codon Evolution and the Temporal Dynamics of dN/dS.” *Molecular Biology and Evolution* 31 (1): 212–31.
- Niu, Jiaxin, Jasmina Profirovic, Haiyun Pan, Rita Vaiskunaite, and Tatyana Voyno-Yasenetskaya. 2003. “G Protein Betagamma Subunits Stimulate p114RhoGEF, a Guanine Nucleotide Exchange Factor for RhoA and Rac1: Regulation of Cell Shape and Reactive Oxygen Species Production.” *Circulation Research* 93 (9): 848–56.
- Parker, G. A. 1970. “Sperm Competition and Its Evolutionary Consequences in the Insects.” *Biological Reviews of the Cambridge Philosophical Society* 45 (4): 525–67.

- Pizzari, Tommaso. 2006. "Of Mice and Sperm." *Proceedings of the National Academy of Sciences of the United States of America* 103 (41): 14983–84.
- Ramm, Steven A., Peter L. Oliver, Chris P. Ponting, Paula Stockley, and Richard D. Emes. 2008. "Sexual Selection and the Adaptive Evolution of Mammalian Ejaculate Proteins." *Molecular Biology and Evolution* 25 (1): 207–19.
- Ramm, Steven A., and Paula Stockley. 2009. "Adaptive Plasticity of Mammalian Sperm Production in Response to Social Experience." *Proceedings. Biological Sciences / The Royal Society* 276 (1657): 745–51.
- Rice, William R., and Brett Holland. 1997. "The Enemies within: Intergenomic Conflict, Interlocus Contest Evolution (ICE), and the Intraspecific Red Queen." *Behavioral Ecology and Sociobiology* 41 (1): 1–10.
- Rosenfeld, Cheryl S., Sarah A. Johnson, Mark R. Ellersieck, and R. Michael Roberts. 2013. "Interactions between Parents and Parents and Pups in the Monogamous California Mouse (*Peromyscus Californicus*)." *PloS One* 8 (9): e75725.
- Sato, Keiichi, Takeshi Nishio, Ryo Kimura, Makoto Kusaba, Tohru Suzuki, Katsunori Hatakeyama, David J. Ockendon, and Yoko Satta. 2002. "Coevolution of the S-Locus Genes SRK, SLG and SP11/SCR in Brassica Oleracea and B. Rapa." *Genetics* 162 (2): 931–40.
- Schatten, Gerald, and Tim Stearns. 2015. "Sperm Centrosomes: Kiss Your Asterless Goodbye, for Fertility's Sake." *Current Biology: CB* 25 (24): R1178–81.
- Schatten, Heide, Vanesa Y. Rawe, and Qing-Yuan Sun. 2011. "The Sperm Centrosome: Its Role and Significance in Nature and Human Assisted Reproduction." *Journal of Reproductive and Stem Cell Biotechnology* 2 (2): 121–27.
- Sharpe, Richard M. 2012. "Sperm Counts and Fertility in Men: A Rocky Road Ahead: Science & Society Series on Sex and Science." *EMBO Reports* 13 (5): 398.
- Shurtliff, Quinn R., Devon E. Pearse, and Duke S. Rogers. 2005. "Parentage Analysis of the Canyon Mouse (*Peromyscus Crinitus*): Evidence for Multiple Paternity." *Journal of Mammalogy* 86 (3): 531–40.
- Shuster, Stephen M. 2009. "Sexual Selection and Mating Systems." *Proceedings of the National Academy of Sciences of the United States of America* 106 Suppl 1 (June): 10009–16.
- Sievers, Fabian, Andreas Wilm, David Dineen, Toby J. Gibson, Kevin Karplus, Weizhong Li, Rodrigo Lopez, et al. 2011. "Fast, Scalable Generation of High-Quality Protein Multiple Sequence Alignments Using Clustal Omega." *Molecular Systems Biology* 7 (October): 539.
- Sironen, Anu, Amelia Shoemark, Mitali Patel, Michael R. Loebinger, and Hannah M. Mitchison. 2020. "Sperm Defects in Primary Ciliary Dyskinesia and Related Causes of Male Infertility." *Cellular and Molecular Life Sciences: CMLS* 77 (11): 2029–48.
- Smith, Cynthia L., and Janan T. Eppig. 2009. "The Mammalian Phenotype Ontology: Enabling Robust Annotation and Comparative Analysis." *Wiley Interdisciplinary Reviews. Systems Biology and Medicine* 1 (3): 390–99.
- Souza, Ana Paula Binato de, Ângela Maria Schorr-Lenz, Franciele Lucca, and Ivan Cunha Bustamante Filho. 2017. "The Epididymis and Its Role on Sperm Quality and Male Fertility." *Animal Reproduction / Colegio Brasileiro de Reproducao Animal* 14 (Suppl. 1): 1234–44.
- Stanyon, Roscoe, and Francesca Bigoni. 2014. "Sexual Selection and the Evolution of Behavior, Morphology, Neuroanatomy and Genes in Humans and Other Primates." *Neuroscience and Biobehavioral Reviews* 46P4 (October): 579–90.
- Swanson, Willie J., and Victor D. Vacquier. 2002. "The Rapid Evolution of Reproductive Proteins." *Nature Reviews. Genetics* 3 (2): 137–44.
- Teng, Linhong, Xiao Fan, Dong Xu, Xiaowen Zhang, Thomas Mock, and Naihao Ye. 2017. "Identification of Genes under Positive Selection Reveals Differences in Evolutionary Adaptation between Brown-Algal Species." *Frontiers in Plant Science* 8 (August): 1429.
- Terada, Yukihiko, Gerald Schatten, Hisataka Hasegawa, and Nobuo Yaegashi. 2010. "Essential Roles of the Sperm Centrosome in Human Fertilization: Developing the Therapy for Fertilization Failure due to Sperm Centrosomal Dysfunction." *The Tohoku Journal of Experimental Medicine* 220 (4): 247–58.
- Tidière, Morgane, Jean-Michel Gaillard, Dennis W. H. Müller, Laurie Bingaman Lackey, Olivier Gimenez, Marcus Clauss, and Jean-François Lemaître. 2015. "Does Sexual Selection Shape Sex Differences in Longevity and Senescence Patterns across Vertebrates? A Review and New Insights from Captive Ruminants." *Evolution; International Journal of Organic Evolution* 69 (12): 3123–40.
- Torgerson, Dara G., Rob J. Kulathinal, and Rama S. Singh. 2002. "Mammalian Sperm Proteins Are Rapidly Evolving: Evidence of Positive Selection in Functionally Diverse Genes." *Molecular Biology and Evolution* 19 (11): 1973–80.
- Tsai-Morris, Chon-Hwa, Yi Sheng, Ravi K. Gutti, Pei-Zhong Tang, and Maria L. Dufau. 2010. "Gonadotropin-Regulated Testicular RNA Helicase (GRTH/DDX25): A Multifunctional Protein Essential for Spermatogenesis." *Journal of Andrology* 31 (1): 45–52.
- Vacquier, Victor D., and Willie J. Swanson. 2011. "Selection in the Rapid Evolution of Gamete Recognition Proteins in Marine Invertebrates." *Cold Spring Harbor Perspectives in Biology* 3 (11): a002931.
- Vladić, Tomislav V., Björn A. Afzelius, and Gennady E. Bronnikov. 2002. "Sperm Quality as Reflected Through Morphology in Salmon Alternative Life Histories." *Biology of Reproduction* 66 (1): 98–105.
- Warnefors, Maria, and Henrik Kaessmann. 2013. "Evolution of the Correlation between Expression Divergence and Protein Divergence in Mammals." *Genome Biology and Evolution* 5 (7): 1324–35.
- Wey, Tina W., Paul B. Vrana, and Karen E. Mabry. 2017. "Mating System as a Possible Driver of Behavioral Diversity in *Peromyscus*." *Behavioral Ecology and Sociobiology* 71 (11): 163.
- Wik, Lotta, Magnus Karlsson, and Hanna Johannesson. 2008. "The Evolutionary Trajectory of the Mating-Type (mat) Genes in

- Neurospora Relates to Reproductive Behavior of Taxa.” *BMC Evolutionary Biology* 8 (April): 109.
- Wilson, Stephen, Lingling Fan, Natasha Sahgal, Jianfei Qi, and Fabian V. Filipp. 2017. “The Histone Demethylase KDM3A Regulates the Transcriptional Program of the Androgen Receptor in Prostate Cancer Cells.” *Oncotarget* 8 (18): 30328–43.
- Winkler, Lennart, Leon M. Kirch, Klaus Reinhold, and Steven A. Ramm. 2019. “Impact of Low Sperm Competition on Male Reproductive Trait Allometries in a Bush-Cricket.” *BMC Evolutionary Biology* 19 (1): 185.
- Wong, Elissa W. P., and C. Yan Cheng. 2009. “Polarity Proteins and Cell-Cell Interactions in the Testis.” *International Review of Cell and Molecular Biology* 278: 309–53.
- Xia, Xuhua, and John S. Millar. 1991. “Genetic Evidence of Promiscuity in *Peromyscus Leucopus*.” *Behavioral Ecology and Sociobiology* 28 (3): 171–78.
- Yang, Ziheng. 2007. “PAML 4: Phylogenetic Analysis by Maximum Likelihood.” *Molecular Biology and Evolution* 24 (8): 1586–91.
- Yi, Lynn, Harold Pimentel, Nicolas L. Bray, and Lior Pachter. 2018. “Gene-Level Differential Analysis at Transcript-Level Resolution.” *Genome Biology* 19 (1): 53.
- Young, Rebecca L., Michael H. Ferkin, Nina F. Ockendon-Powell, Veronica N. Orr, Steven M. Phelps, Ákos Pogány, Corinne L. Richards-Zawacki, et al. 2019. “Conserved Transcriptomic Profiles Underpin Monogamy across Vertebrates.” *Proceedings of the National Academy of Sciences of the United States of America* 116 (4): 1331–36.
- Yuan, Shuiqiao, Yue Liu, Hongying Peng, Chong Tang, Grant W. Hennig, Zhuqing Wang, Li Wang, et al. 2019. “Motile Cilia of the Male Reproductive System Require miR-34/miR-449 for Development and Function to Generate Luminal Turbulence.” *Proceedings of the National Academy of Sciences of the United States of America* 116 (9): 3584–93.