

Antiproliferative Effect of *Epilobium parviflorum* Extracts on Colorectal Cancer Cell Line HT-29

M. Aydın Akbudak^{1*}, Tevhide Sut¹, Nuraniye Eruygur², Ersin Akinci^{1,3*}

¹Akdeniz University, Department of Agricultural Biotechnology, Antalya, Turkey

²Selcuk University, Department of Pharmacognosy, Konya, Turkey

³Harvard University, Brigham and Woman's Hospital, Boston, USA

*Corresponding authors: akbudak@akdeniz.edu.tr, eakinci@bwh.harvard.edu

Abstract

The *Epilobium* species are rich in various active phytochemicals and have seen wide use in folk medicine to treat several diseases. The present study exhibited the antiproliferative activity of aqueous and ethanolic *Epilobium parviflorum* extracts in a colon cancer cell line, HT-29 cells. Both types of extracts reduced the cell viability of HT-29 cells in a dose-dependent manner. A gene expression analysis of the HT-29 cells demonstrated an increase in apoptotic genes, *Caspase-3* and *Caspase-8*. Nuclear fragmentation of the apoptotic cells was also demonstrated through TUNEL assay and immunostaining experiments. On the other hand, the same lethal concentrations of the *E. parviflorum* extracts did not significantly affect a non-cancerous human fibroblast cell line, BJ cells. Our results confirmed that aqueous and ethanolic *E. parviflorum* extracts can eliminate proliferation of human colorectal carcinoma cells *in vitro*. *E. parviflorum* may have the potential to become a therapeutic agent against colon cancers.

Key words: *Epilobium parviflorum*, Colon cancer, HT-29 cells, Apoptosis

Introduction

The *Epilobium* genus from the *Onagraceae* family contains more than 200 species that are distributed all around the world. Among them, *E. angustifolium* L., *E. parviflorum* Schreb., and *E. hirsutum* L. are the most well-known (Vitalone and Allkanjari 2018) and are widely used in traditional medicine to treat various infections, disorders and diseases. To illustrate, their extracts have served as remedies to relieve menstrual disorders in Chinese folk medicine and to treat infected sores, swellings and rectal hemorrhages in traditional Native American medicine (Granica et al. 2014; Hevesi et al. 2009; Stolarczyk et al. 2013). *E. angustifolium*, *E. montanum* and *E. parviflorum* have also been used to cure prostate, kidney and urinary tract diseases in Austrian folk medicine (Vogl et al. 2013). Moreover, they have been reported to treat skin and mucosa infections (Granica et al. 2014; Stolarczyk et al. 2013). In parallel with their use in folk medicine, the aerial parts of the *Epilobium* species have been demonstrated to be rich in various active phytochemicals, such as phytosterols, polyphenols, flavonoids, and tannins. It was reported that *Epilobium* sp. contains 103 different compounds (reviewed by Granica et al. (2014)). According to ultra

violet (UV) and tandem mass spectrometry (MS/MS) analyses, the phytochemical characterizations of *E. angustifolium*, *E. parviflorum*, and *E. hirsutum* extracts are comprised of 38 compounds (Stolarczyk et al. 2013).

In addition to the disorders and diseases mentioned above, extracts from the *Epilobium* species are most commonly used as infusions to treat benign prostatic hyperplasia (BPH), urethral inflammation, and micturition disorders. BPH is the most significant urological disorder that affects the aging male population because it causes excessive cellular proliferation in prostrate tissues (Vitalone et al. 2001). Although its etiology is not fully known, BPH is regarded as an endocrine disorder caused by an age-related hormone imbalance (Ekman 1989). Previous studies have demonstrated the inhibitory activity of *Epilobium* spp. extracts against 5 α -reductase (which converts testosterone to dihydrotestosterone) and aromatase (which converts testosterone to estrogen) enzymes, which are involved in the etiology of BPH (Ducrey et al. 1997). Oenothien B, the primary tannin component of *E. parviflorum*, is proven to inhibit 5 α -reductase enzymes. Although BPH can be cured through medical operations, diuretic problems are often reported due to insufficient resection and persistent urinary infections. Therefore, *Epilobium* herb infusions remain an attractive alternative for the treatment of BPH (Akbulak 2002).

In addition to the anti-androgenic effects of *Epilobium*, the anti-cancerous effects of the genus' extracts have been demonstrated on various cell lines, including androgen-independent prostate cancer cells (PC-3), androgen-sensitive human prostate adenocarcinoma cells (LNCaP), human mammary epithelial cells (HMEC), the human astrocytoma cell line (1321 N1), and human epithelial prostrate cells (PZ-HPV-7) (Kiss et al. 2006; Stolarczyk et al. 2013; Vitalone et al. 2001; Vitalone et al. 2003b).

Colorectal cancer is one of the deadliest forms of cancer. While it can be cured by surgical removal of the tumor if detected early, effective treatment options become increasingly limited as the disease progresses. In addition to colon cancer's links to genetic predisposition, aging, smoking and a lack of exercise, reports have indicated that it is also connected to diet and that at least some colon cancers can be prevented by changing dietary habits. In light of the pathogenesis of prostate cell proliferation and the application of *Epilobium* sp. extracts in folk medicine and their activities on various cancer cell lines, we investigated the antiproliferative activity of *E. parviflorum* extracts obtained from the solvents of water and ethanol on a human colorectal adenocarcinoma cell line (HT-29).

Material and Methods

Plant material and extract preparation

E. parviflorum seeds were purchased from The Strictly Medicinal Seeds Company (OR, USA). Seeds were individually sown into 20-cm square pots containing peat. Plants were grown under a regime of 16h-light/8h-dark periods at 24°C and 60% relative humidity in a plant growth chamber. They were watered with half-strength Hoagland's liquid medium every day. After reaching maturity (two-months old), the aerial parts of the plants were harvested and shade dried at room temperature. Thirty-five grams of the powdered plant material was macerated with 50% ethanol for 24 hours. After filtering by filter paper, the extraction was repeated two times. The combined filtrate was concentrated under vacuum at 40 °C by rotary evaporator (Buchi R-100, Switzerland) to obtain the crude aqueous ethanol extract (13.61 g, Yield:

38.89%). A crude ethanolic extract was suspended in distilled water (500 mL) and was then fractionated with n-hexane (10 × 500 mL), ethyl acetate (10 × 500 mL), n-butanol (10 × 500 mL), and distilled water (10 × 500 mL) using separating funnels. All fractions were concentrated using a rotary evaporator, from which 0.23 g hexane fr. (2.21%), 2.09 g ethyl acetate fr. (20.1%), 2.16 g n-butanol fr. (20.77%), and 5.095 g aqueous fr. (48.99%) were obtained (Ayaz et al. 2014).

Cell Culture

Human colon cancer cell line HT-29 and noncancerous human fibroblast cell line (BJ) were purchased from ATCC (VA, USA). The cells were plated into T-75 tissue culture treated flasks (Corning, NY, USA) with DMEM (Gibco, MA, USA) medium supplemented with 10% fetal bovine serum (FBS) (Biological Industries, VT, USA), 1% antibiotic-antimycotic (Gibco), 1% L-glutamine (Gibco) and maintained at 37 °C in a 5% CO₂ humidified environment. The cells were passaged using trypsin (Gibco) once the plate became confluent. Before the plant extract application, the cells were seeded into a 96-well plate (Corning) as 10⁴ cells in each well and then incubated for 24 hours before the application. Powdered plant extracts of *E. parviflorum*, obtained using 2 different solvents (water and ethanol), were dissolved in distilled water. Ethanolic plant extract was diluted in the medium at a concentration of 500, 200, 100, 10 µg/ml. Aqueous plant extract was diluted to 100, 50, 30, 10 µg/ml in the medium. Dilutions were then applied onto HT-29 and BJ cells and incubated for 48 and 72 hours.

MTT (Cell Proliferation Assay)

HT-29 and BJ cells were plated into 96-well plates at 10⁴ cells/well. The MTT (Millipore, MA, USA) solution was prepared at a concentration of 5 mg/ml. Following the application of plant extracts, 30 µl of stock MTT was added into each well on day 2 and day 3. Plates were incubated at 37 °C for 4 hours. After incubation, the medium was removed and 100 µl of DMSO was added into each well to dissolve the purple formazan. Using a spectrophotometer, formazan was read at 570 nm and the background was read at 690 nm. Based on the control group, the percentage of viable cells was calculated using the absorbance values found. The experiments were conducted with three biological and three technical replicates. The half maximal inhibitory concentration (IC₅₀) values were calculated by GraphPad Prism 7 software.

RNA Isolation and cDNA Synthesis

Total RNA isolation was performed using GeneJET RNA Purification Kit (Thermo Scientific, MA, USA) according to the manufacturer's protocol. Any genomic DNA contamination was removed using RNase-Free DNase enzyme (Promega, WI, USA). RNA amounts were determined with BioDrop µLITE (Biodrop, UK). RNA samples were stored at -80 °C. 500 ng of total RNA from all samples were transcribed into cDNA using iScript cDNA Synthesis Kits (Bio-Rad, CA, USA) according to the manufacturer's protocol. The resulting cDNA samples were stored at -20 °C.

Quantitative PCR Assay

The level of gene expression was measured using LightCycler 96 system (Roche, Germany) and Maxima SYBR Green RT-qPCR Master Mix (Thermo Scientific). Sequences of *Caspase-3*, *Caspase-8*, *p53*, *Bax*, and *glyceraldehyde-3-phosphate dehydrogenase (Gapdh)*, genes were obtained from NCBI database and the primers (Table 1) were designed using NCBI primer software. The specificity of the primers was confirmed by a single band image on the agarose gel. *Gapdh* gene was used as the reference. Gene expression levels were demonstrated using $\Delta\Delta CT$ method (Livak and Schmittgen 2001).

TUNEL and LDH tests

The cells were plated into six-well tissue culture plates (Corning) at 10^6 cells/well and treated with IC_{50} concentration of plant extracts. The next day apoptotic and necrotic cells were detected by flow cytometry (BD FACS Canto II) using APO-BrdU terminal deoxynucleotidyl transferase mediated dUTP nick end labeling (TUNEL) Assay Kit (Invitrogen) and lactate dehydrogenase (LDH) cytotoxicity assay kit (Pierce) according to the manufacturer's protocol, respectively.

Statistical Analysis

The statistical significance of the MTT test results was determined by One-way ANOVA test (SPSS, IBM, USA) and Bonferroni test. qRT-PCR results were evaluated using the Holm-Sidak method in Sigma Stat3.5 software. The statistical significance of the LDH test results was determined by student's t-test. Values less than 0.05 (*) were considered to be statistically significant.

Results

E. parviflorum extracts reduce cell viability of HT-29 cell line

The human colon cancer cell line HT-29 and human noncancerous fibroblast cell line BJ were treated with 2 different *E. parviflorum* extracts which were extracted with water and ethanol. Each extract were given to the cells at various concentrations; 10, 30, 50, 100 $\mu\text{g/ml}$ for water and 10, 100, 200, 500 $\mu\text{g/ml}$ for ethanol. Viability of HT-29 cells was significantly reduced in a dose dependent manner 48 hr and 72 hr after administration of each extract (Figure 1, 2). Water and ethanol extracts reduced HT-29 cell viability up to 50% when applied at a dose of 43.6 $\mu\text{g/ml}$ and 191.0 $\mu\text{g/ml}$, respectively (Figure 1A, 1C; Figure 2A, 2C; Figure 3). On the other hand, notably these concentrations did not significantly reduce the viability of noncancerous BJ fibroblast cells (Figure 1B; Figure 2B).

The effect of *E. parviflorum* extracts on gene expression profile

To further explore the effects of *Epilobium* extracts on HT-29 cells, the apoptotic gene expression profile of HT-29 and BJ cells were assessed 48 hr after administration of both extracts at their lethal concentration (LD₅₀). For this purpose, mRNA expression levels of three different apoptotic genes (*Caspase-3*, *Caspase-8*, *Bax*), as well as the *p53* gene, were demonstrated through RT-qPCR (Figure 4). Results showed that both *E. parviflorum* extracts increased the expression level of apoptotic genes *Caspase-8* (1.72 ± 0.16 -fold for ethanol, 1.82 ± 0.35 -fold for water extracts) and *Bax* (1.74 ± 0.04 -fold for ethanol, 2.45 ± 0.27 -fold for water extracts) at different but significant degrees in HT-29 cells (Figure 4). However, both extracts significantly reduced the expression level of *p53* gene (0.57 ± 0.06 -fold for ethanol, 0.41 ± 0.06 -fold for water extracts) in HT-29 cells. However, the increase observed at apoptotic gene expression levels of HT-29 cells was not seen in BJ fibroblasts. Instead, their expression levels were reduced (0.34 ± 0.03 , 0.52 ± 0.04 , 0.37 ± 0.02 -fold for *Caspase-8*, *Bax* and *Caspase-3*, respectively) (Figure 4). Aqueous extract, however, stimulated the expression of apoptotic genes (2.69 ± 0.34 , 3.93 ± 0.17 , 2.1 ± 0.14 for *Caspase-8*, *Bax* and *Caspase-3*, respectively) in BJ fibroblast cells which is consistent with 72 hr cell viability assays of aqueous extract on BJ fibroblast cells.

***E. parviflorum* extracts induce apoptotic cell death of HT-29 cells**

In addition to profiling the apoptotic gene expression in HT-29 cells treated with *E. parviflorum* extracts, another morphological sign of apoptosis (nuclear fragmentation) in these cells was demonstrated by performing TUNEL assay. After labeling the 3'-OH edges of fragmented nuclear DNA through a TUNEL assay kit, flow cytometry analysis showed that 6.9% and 13.3% of HT-29 cells were fated to apoptosis when treated with water and ethanol extracts respectively (Figure 5A). Nuclear fragmentation in these cells was also demonstrated through immunostaining under a fluorescence microscope (Figure 5B). Moreover, LDH assay showed that both *E. parviflorum* extracts slightly but significantly stimulated the necrosis in HT-29 cells compared to untreated control cells (Figure 6).

In consistent with being widely used in folk medicine, *Epilobium* spp. have been demonstrated to have various therapeutic effects such as analgesic (Pourmorad et al. 2007; Tita et al. 2001), antiandrogenic (Allkanjari and Vitalone 2015), anti-inflammatory (Hevesi et al. 2009; Vogl et al. 2013), antimicrobial (Battinelli et al. 2001; Jones et al. 2000), antioxidant (Stajner et al. 2007; Steenkamp et al. 2006), and antitumor activity (Vitalone et al. 2003a; Voynova et al. 1991) in various *in vitro* as well as *in vivo* animal studies. Antiproliferative effect of *Epilobium* extracts on healthy (PZ-HPV-7) and cancerous prostate cells lines (LNCaP) was also reported by different groups and this effect is mainly associated with its ellagitannins; Oenothien A and B which inhibit aromatase and 5- α -reductase enzymes involved in etiology of benign prostatic hyperplasia (Ducrey et al. 1997; Lesuisse et al. 1996; Piwowarski et al. 2017; Yoshida et al. 2018). However, demonstration of anti-tumorigenic and antiproliferative effect of *Epilobium* extracts on leucosis (P388) (Voynova et al. 1991) and astrocytoma (1321N1) (Vitalone et al. 2003b) cell lines respectively indicates that this effect is not specific for prostate cells. Which biological compounds of *Epilobium* extracts are responsible for this antiproliferative effect is not known yet, even though there are studies demonstrating the antiproliferative effect of ellagitannins on different cancer types (Ismail et al. 2016; Wang et al. 1999).

Discussion

Our results from the present study demonstrated that different *E. parviflorum* extracts, which are prepared by using water and ethanol solvents, reduced the viability of HT-29 cells significantly (Figure 1; Figure 2; Figure 3). The potency of plant extracts depends on the extraction method. The most potent extraction solvent also depends on the plant species to be studied as well as the active molecule to be isolated. In the present study the aqueous extract (43,6 µg/ml) of *E. parviflorum* is more potent than the ethanolic extract (191.0 µg/ml) on HT-29 cells (Figure 1; Figure 2). This may come from the different degree of polarity of these solvents. Ethanol is less polar than water and more hydrophilic components are known to be retained in aqueous extracts compared to ethanolic extracts (Abarca-Vargas et al. 2016; Rauf et al. 2018). On the other hand, it should also be noted that ethanol is a better solvent for organic compounds than the water is. Another reason why water extract was more potent may be due the fact that we re-suspended both extracts in water which may not dissolve the non-polar components extracted with ethanol. It is also notable that these concentrations reducing the viability of HT-29 cells up to 50% did not have much effect on healthy fibroblast cells. RT-qPCR results showed that both extracts increased the expression of apoptotic genes *Caspase-8* and *Bax* (Figure 4). The tunel assay, in which 3'-OH ends of fragmented DNAs are fluorescently labeled, also verified cell death through apoptosis (Figure 5). Apoptosis can be initiated by intrinsic and extrinsic pathways. Extrinsic pathways activate Caspase-8 whereas intrinsic pathways activate Caspase-9; both of which are called initiator factors, and can separately induce executioner factors to initiate apoptosis (McIlwain et al. 2013). *Bax* is also a regulator of intrinsic pathways of apoptosis and induces mitochondrial dysfunction by mitochondrial membrane permeabilization (Liu et al. 2016). Permeabilization of mitochondrial membrane causes the release of cytochrome c which in turn stimulates apoptosis through Caspase-9 (Liu et al. 2016). Our RT-qPCR results indicate that *E. parviflorum* extracts may induce apoptosis both through intrinsic and extrinsic pathways. Consistent with our results, Stolarczyk et al. (2013) also demonstrated the apoptotic effect of different *Epilobium* extracts on human hormone dependent prostate cancer cells through intrinsic pathways (Stolarczyk et al. 2013). In addition to stimulation of apoptosis, we also found that HT-29 cells treated with *E. parviflorum* extracts also underwent necrosis (Figure 6). The observed necrosis could be secondary necrosis due to the toxic content of apoptotic cells which are not cleaned out by macrophages in *in vitro* culture (Silva 2010). On the other hand, there are also reports showing that the same compounds can even cause apoptosis and necrosis simultaneously (Arakawa et al. 2015). We also showed that expression of *p53* gene is downregulated in HT-29 cells treated with *E. parviflorum* extracts. Wild type *p53* is a tumor suppressor protein and *p53* gene is mutated in many cancer cell types including HT-29 cells (Freed-Pastor and Prives 2012; Levine and Oren 2009). In HT-29 cells, *p53* gene has a R273H mutation (Rodrigues et al. 1990). There are many reports demonstrating that R273H substitution in *p53* is a gain of function mutation and providing oncogenic functions to the cells to drive invasion and metastasis (Lang et al. 2004; Muller et al. 2013; Olive et al. 2004; Sigal and Rotter 2000). Based on the literature, reduction of mutant *p53* expression, as we saw in our study, may be useful to reduce the oncogenic properties of HT-29 cells as well.

Conclusion

Our results confirmed that *E. parviflorum* extracts can eliminate proliferation of human colorectal carcinoma cells *in vitro*. The findings we obtained indicate that aqueous and ethanolic extracts of *E. parviflorum* have the potential to become therapeutic anti-carcinogenic agent. However, to support the hypothesis that *E. parviflorum* extracts might play a role in the colorectal cancer prevention, some randomized controlled trials as well as large prospective cohort studies are needed.

Acknowledgements

The authors thank Dr. Trevor A. Epp for his helpful comments on the manuscript.

Funding

This research was supported by Akdeniz University BAP grant FYL-2018-3896 to MAA.

Author contribution statement

MAA and EA conceived the study; TS, EA, NE and MAA conducted the experiments. EA and MAA wrote the manuscript, and all authors read, edited and approved the manuscript.

Conflict of Interest

The authors declare no conflict of interest.

References

- Abarca-Vargas R, Peña Malacara CF, Petricevich VL (2016) Characterization of Chemical Compounds with Antioxidant and Cytotoxic Activities in Bougainvillea x buttiana Holttum and Standl, (var. Rose) Extracts Antioxidants (Basel) 5 doi:10.3390/antiox5040045
- Akbudak MA (2002) Determination of suitable tissue cultural conditions for small-flowered willow herb (Epilobium parviflorum schreb.) and İzmir oregano (Origanum onites L.). Selcuk University
- Allkanjari O, Vitalone A (2015) What do we know about phytotherapy of benign prostatic hyperplasia? Life Sci 126:42-56 doi:10.1016/j.lfs.2015.01.023
- Arakawa S, Nakanomyo I, Kudo-Sakamoto Y, Akazawa H, Komuro I, Shimizu S (2015) Identification of a novel compound that inhibits both mitochondria-mediated necrosis and apoptosis Biochem Biophys Res Commun 467:1006-1011 doi:10.1016/j.bbrc.2015.10.022
- Ayaz M, Junaid M, Ahmed J, Ullah F, Sadiq A, Ahmad S, Imran M (2014) Phenolic contents, antioxidant and anticholinesterase potentials of crude extract, subsequent fractions and crude saponins from Polygonum hydropiper L BMC Complement Altern Med 14:145 doi:10.1186/1472-6882-14-145

- Battinelli L, Tita B, Evandri MG, Mazzanti G (2001) Antimicrobial activity of *Epilobium* spp. extracts *Farmaco* 56:345-348
- Ducrey B, Marston A, Göhring S, Hartmann RW, Hostettmann K (1997) Inhibition of 5 alpha-reductase and aromatase by the ellagitannins oenothien A and oenothien B from *Epilobium* species *Planta Med* 63:111-114 doi:10.1055/s-2006-957624
- Ekman P (1989) BPH epidemiology and risk factors *Prostate Suppl* 2:23-31
- Freed-Pastor WA, Prives C (2012) Mutant p53: one name, many proteins *Genes Dev* 26:1268-1286 doi:10.1101/gad.190678.112
- Granica S, Piwowarski JP, Czerwińska ME, Kiss AK (2014) Phytochemistry, pharmacology and traditional uses of different *Epilobium* species (Onagraceae): a review *J Ethnopharmacol* 156:316-346 doi:10.1016/j.jep.2014.08.036
- Hevesi BT, Houghton PJ, Habtemariam S, Kéry A (2009) Antioxidant and antiinflammatory effect of *Epilobium parviflorum* Schreb *Phytother Res* 23:719-724 doi:10.1002/ptr.2725
- Ismail T et al. (2016) Ellagitannins in Cancer Chemoprevention and Therapy *Toxins (Basel)* 8 doi:10.3390/toxins8050151
- Jones NP, Arnason JT, Abou-Zaid M, Akpagana K, Sanchez-Vindas P, Smith ML (2000) Antifungal activity of extracts from medicinal plants used by First Nations Peoples of eastern Canada *J Ethnopharmacol* 73:191-198
- Kiss A, Kowalski J, Melzig MF (2006) Effect of *Epilobium angustifolium* L. extracts and polyphenols on cell proliferation and neutral endopeptidase activity in selected cell lines *Pharmazie* 61:66-69
- Lang GA et al. (2004) Gain of function of a p53 hot spot mutation in a mouse model of Li-Fraumeni syndrome *Cell* 119:861-872 doi:10.1016/j.cell.2004.11.006
- Lesuisse D et al. (1996) Determination of oenothien B as the active 5-alpha-reductase-inhibiting principle of the folk medicine *Epilobium parviflorum* *J Nat Prod* 59:490-492 doi:10.1021/np960231c
- Levine AJ, Oren M (2009) The first 30 years of p53: growing ever more complex *Nat Rev Cancer* 9:749-758 doi:10.1038/nrc2723
- Liu Z, Ding Y, Ye N, Wild C, Chen H, Zhou J (2016) Direct Activation of Bax Protein for Cancer Therapy *Med Res Rev* 36:313-341 doi:10.1002/med.21379
- Livak KJ, Schmittgen TD (2001) Analysis of relative gene expression data using real-time quantitative PCR and the 2(-Delta Delta C(T)) Method *Methods* 25:402-408 doi:10.1006/meth.2001.1262
- McIlwain DR, Berger T, Mak TW (2013) Caspase functions in cell death and disease *Cold Spring Harb Perspect Biol* 5:a008656 doi:10.1101/cshperspect.a008656
- Muller PA et al. (2013) Mutant p53 enhances MET trafficking and signalling to drive cell scattering and invasion *Oncogene* 32:1252-1265 doi:10.1038/onc.2012.148
- Olive KP et al. (2004) Mutant p53 gain of function in two mouse models of Li-Fraumeni syndrome *Cell* 119:847-860 doi:10.1016/j.cell.2004.11.004

- Piwowski JP et al. (2017) Evaluation of the Effect of *Epilobium angustifolium* Aqueous Extract on LNCaP Cell Proliferation in In Vitro and In Vivo Models *Planta Med* 83:1159-1168 doi:10.1055/s-0043-109372
- Pourmorad F, Ebrahimzadeh MA, Mahmoudi M, Yasini S (2007) Antinociceptive activity of methanolic extract of *Epilobium hirsutum* *Pak J Biol Sci* 10:2764-2767
- Rauf A, Nawaz H, Shad MA (2018) Effect of solvent polarity and extraction time on in vitro antioxidant properties of *Brassica oleracea* Convar *Capitata* Var L. seeds *Pak J Pharm Sci* 31:1889-1897
- Rodrigues NR, Rowan A, Smith ME, Kerr IB, Bodmer WF, Gannon JV, Lane DP (1990) p53 mutations in colorectal cancer *Proc Natl Acad Sci U S A* 87:7555-7559
- Sigal A, Rotter V (2000) Oncogenic mutations of the p53 tumor suppressor: the demons of the guardian of the genome *Cancer Res* 60:6788-6793
- Silva MT (2010) Secondary necrosis: the natural outcome of the complete apoptotic program *FEBS Lett* 584:4491-4499 doi:10.1016/j.febslet.2010.10.046
- Stajner D, Popović BM, Boza P (2007) Evaluation of willow herb's (*Epilobium angustifolium* L.) antioxidant and radical scavenging capacities *Phytother Res* 21:1242-1245 doi:10.1002/ptr.2244
- Steenkamp V, Gouws MC, Gulumian M, Elgorashi EE, van Staden J (2006) Studies on antibacterial, anti-inflammatory and antioxidant activity of herbal remedies used in the treatment of benign prostatic hyperplasia and prostatitis *J Ethnopharmacol* 103:71-75 doi:10.1016/j.jep.2005.07.007
- Stolarczyk M, Naruszewicz M, Kiss AK (2013) Extracts from *Epilobium* sp. herbs induce apoptosis in human hormone-dependent prostate cancer cells by activating the mitochondrial pathway *J Pharm Pharmacol* 65:1044-1054 doi:10.1111/jphp.12063
- Tita B, Abdel-Haq H, Vitalone A, Mazzanti G, Saso L (2001) Analgesic properties of *Epilobium angustifolium*, evaluated by the hot plate test and the writhing test *Farmaco* 56:341-343
- Vitalone A, Allkanjari O (2018) *Epilobium* spp: Pharmacology and Phytochemistry *Phytother Res* 32:1229-1240 doi:10.1002/ptr.6072
- Vitalone A, Bordi F, Baldazzi C, Mazzanti G, Saso L, Tita B (2001) Anti-proliferative effect on a prostatic epithelial cell line (PZ-HPV-7) by *Epilobium angustifolium* L *Farmaco* 56:483-489
- Vitalone A, Guizzetti M, Costa LG, Tita B (2003a) Extracts of various species of *Epilobium* inhibit proliferation of human prostate cells *J Pharm Pharmacol* 55:683-690 doi:10.1211/002235703765344603
- Vitalone A, McColl J, Thome D, Costa LG, Tita B (2003b) Characterization of the effect of *Epilobium* extracts on human cell proliferation *Pharmacology* 69:79-87 doi:10.1159/000072360
- Vogl S et al. (2013) Ethnopharmacological in vitro studies on Austria's folk medicine--an unexplored lore in vitro anti-inflammatory activities of 71 Austrian traditional herbal drugs *J Ethnopharmacol* 149:750-771 doi:10.1016/j.jep.2013.06.007
- Voynova E, Dimitrova S, Naydenova E, Karadjov P (1991) Inhibitory action of extracts of *Maclura aurantiaca* and *Epilobium hirsutum* on tumour models in mice *Acta Physiol Pharmacol Bulg* 17:50-52

Wang CC, Chen LG, Yang LL (1999) Antitumor activity of four macrocyclic ellagitannins from *Cuphea hyssopifolia* Cancer Lett 140:195-200

Yoshida T, Yoshimura M, Amakura Y (2018) Chemical and Biological Significance of Oenothien B and Related Ellagitannin Oligomers with Macrocyclic Structure Molecules 23 doi:10.3390/molecules23030552

Table 1. Primer sequences used in RT-qPCR

Gene	Primer (5'-3')
<i>Caspase-3</i>	Forward: GCACTGGAATGACATCTCGGTC Reverse: ATGGCTCAGAAGCACACAAACA
<i>Caspase-8</i>	Forward: ATGAAAAGCAAACCTCGGGGATAC Reverse: GTGCCATAGATGATGCCCTTGTC
<i>p53</i>	Forward: CTGCTCAGATAGCGATGGTCTGG Reverse: AACCTCAGGCGGCTCATAGG
<i>Bax</i>	Forward: AGTGTCTCAAGCGCATCGGG Reverse: TGTCCACGGCGGCAATCA
<i>Gapdh</i>	Forward: GGGCTCTCCAGAACATCATCCC Reverse: GGTCCACCACTGACACGTTG

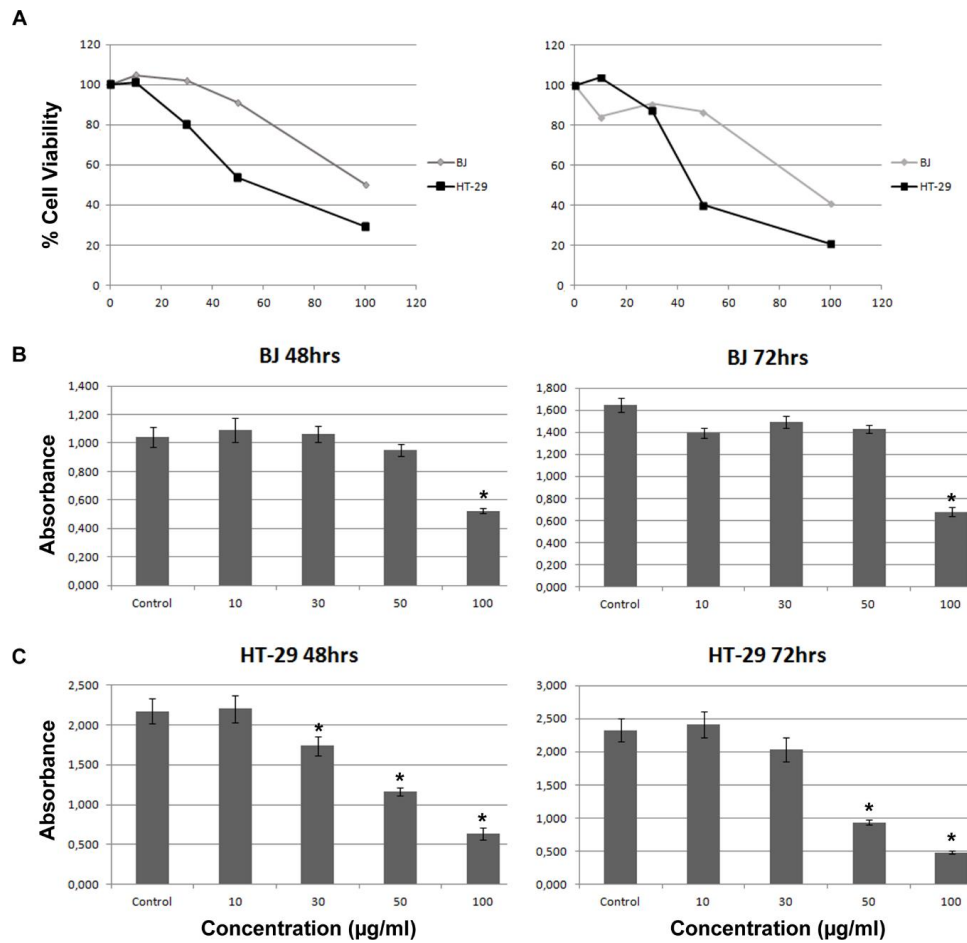


Figure 1. Cell viability percentage of HT-29 and BJ cells after 48 h (left panel) and 72 h (right panel) treatment with aqueous extract of *E. parviflorum* at different concentrations (µg/ml) (A). Absorbance values from MTT assay of BJ (B) and HT-29 (C) cells after 48 h (left panel) and 72 h (right panel) treatment with aqueous extract of *E. parviflorum* at different concentrations (µg/ml). Values are expressed as mean ± S.D. ($n = 3$). Asterisk (*) indicates significant differences ($p < 0.05$).

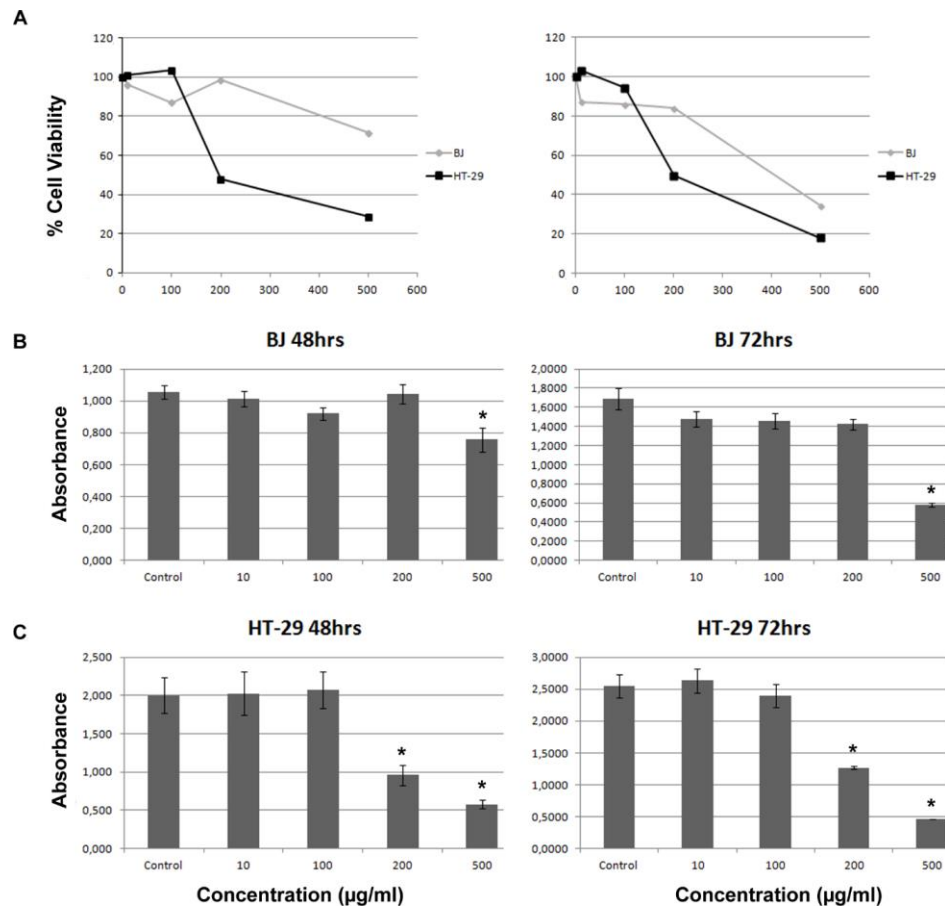


Figure 2. Cell viability percentage of HT-29 and BJ cells after 48 h (left panel) and 72 h (right panel) treatment with **ethanolic extract of *E. parviflorum*** at different concentrations (μg/ml) (A). Absorbance values from MTT assay of BJ (B) and HT-29 (C) cells after 48 h (left panel) and 72 h (right panel) treatment with aqueous extract of *E. parviflorum* at different concentrations (μg/ml). Values are expressed as mean ± S.D. (n = 3). Asterisk (*) indicates significant differences (p < 0.05).

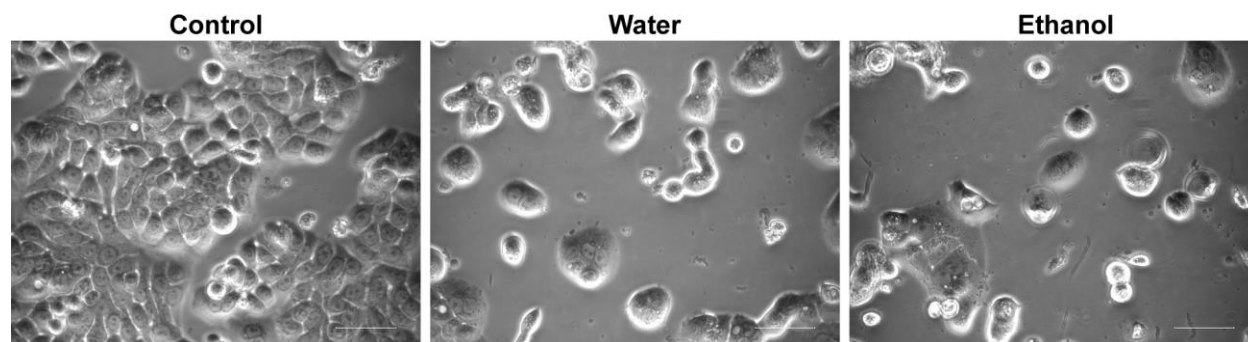


Figure 3. Reduced viability of HT-29 cells treated with aqueous and ethanolic extracts of *E. parviflorum*. Scale bars, 50μm.

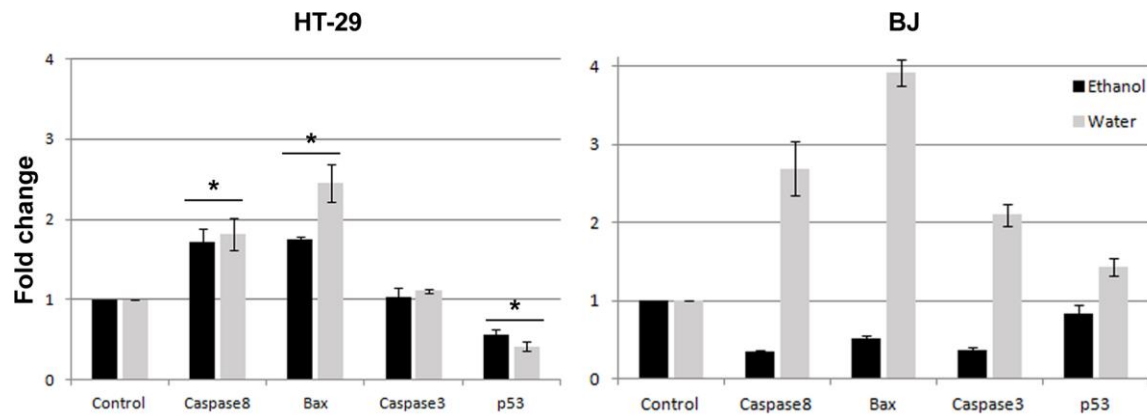


Figure 4. Apoptotic gene expression profile of HT-29 (left panel) and BJ (right panel) cells treated with ethanolic (black bars) and aqueous (grey bars) extracts of *E. parviflorum* for 48 hours. Data are represented as fold change relative to untreated control cells. Each gene expression was normalized according to *Gapdh* expression. Values are expressed as mean \pm S.D. (n = 3). Asterisk (*) indicates significant differences (p < 0.05).

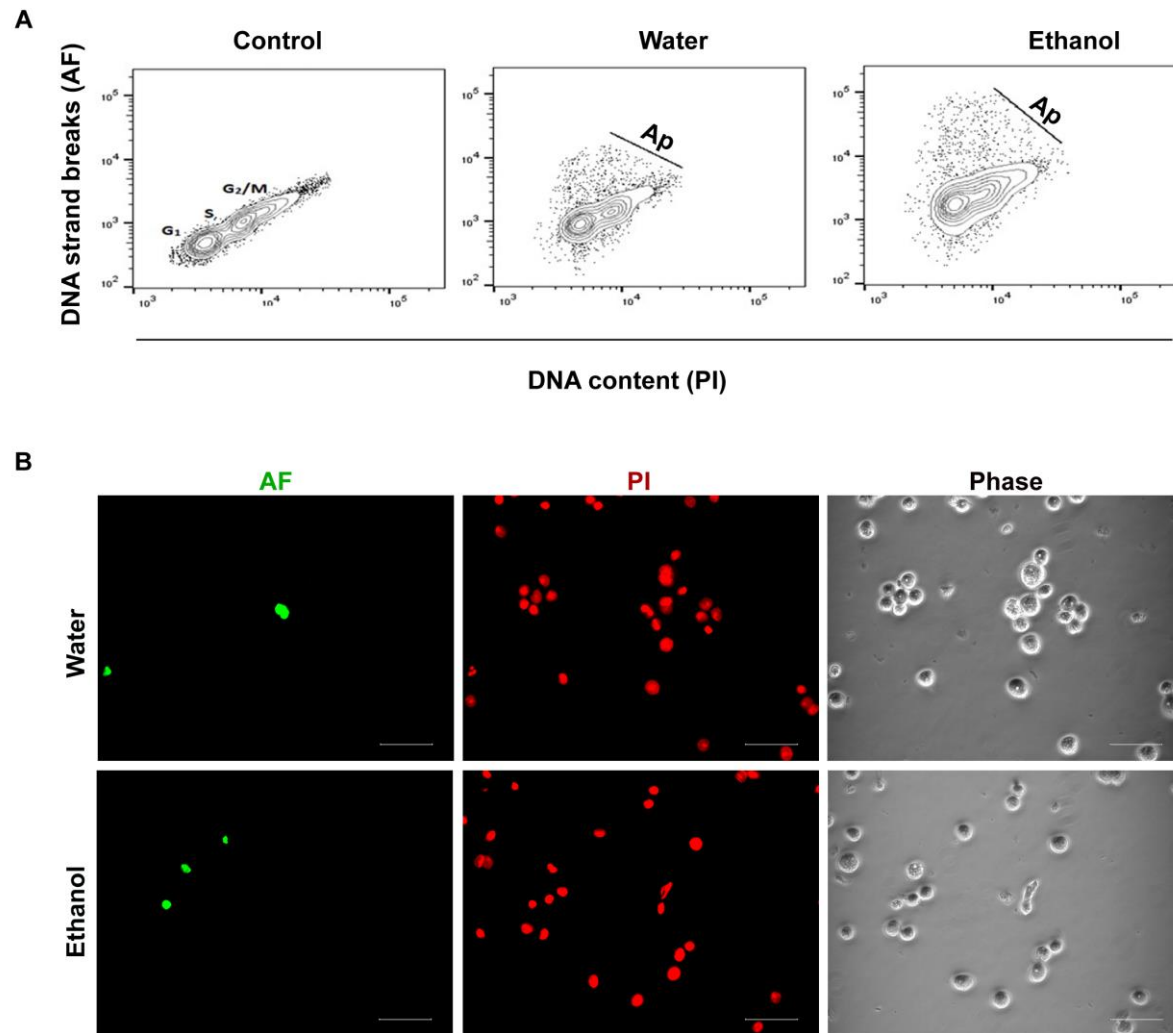


Figure 5. Demonstration of apoptotic HT-29 cells treated with *E. parviflorum* extracts through FACS (**A**) and fluorescence microscope (**B**). Cells were analyzed after 24 h extract treatment. DNA strand breaks in apoptotic cells were labeled with Alexa Fluor 488 (AF; green). Cell nuclei of all cells were labeled with propidium iodide (PI; red). Scale bars, 50µm.

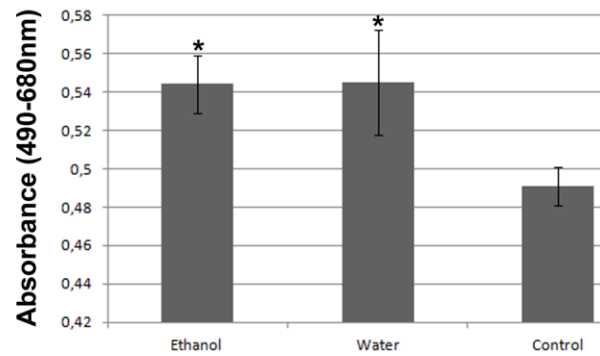


Figure 6. Necrosis of HT-29 cells treated with *E. parviflorum* extracts. Cells were analyzed after 24 h extract treatment. Values are expressed as mean \pm S.D. (n = 3). Asterisk (*) indicates significant differences ($p < 0.05$).