

Dynamic encoding of saccade sequences in primate frontal eye field

Jing Jia^{1,3}, Zhen Puyang^{1,3}, Qingjun Wang¹, Xin Jin^{2,4,*}, and Aihua Chen^{1,4,*}

1. Key Laboratory of Brain Functional Genomics (Ministry of Education), East China Normal University, 3663 Zhongshan Road N., Shanghai 200062, China
2. Molecular Neurobiology Laboratory, The Salk Institute for Biological Studies, 10010 North Torrey Pines Road, La Jolla, CA 92037, USA
3. Co-first author.
4. Co-corresponding author.

* Correspondence: ahchen@brain.ecnu.edu.cn (A.C.) or xjin@salk.edu (X.J.)

In Brief:

Jia, Puyang et al. employed in vivo recording to reveal the dynamic encoding of sequential saccades in primate frontal eye field (FEF), then used electric microstimulation and reversible inactivation to demonstrate the causal role of FEF in controlling saccade sequences.

Highlights:

- FEF neurons respond differently during sequential vs. single saccades
- Sequence-related FEF activity is context-dependent
- FEF microstimulation induced saccade without altering sequence structure
- FEF inactivation severely impaired the performance of sequential saccades

ABSTRACT

Frontal eye field (FEF) is a key part of oculomotor system, with dominant responses to the direction of single saccades. However, whether and how FEF contributes to sequential saccades remain largely unknown. Here by training rhesus monkeys to perform sequential saccades and recording the neuronal activities in FEF, we found that the sequence-related activities are clearly represented in FEF, and many neurons' selectivity to saccade direction undergoes dynamic changes during sequential task. In addition, the sequence-related activities are context-dependent, with different firing activities during memory- versus visually-guided sequence. Supra-threshold microstimulation in FEF evokes saccade without altering the overall sequence structure. Pharmacological inactivation of FEF severely impaired the monkey's performance of sequential saccades, with different effects on the same actions at different positions within the sequence. These results reveal the context-dependent dynamic encoding of saccade direction in FEF, and underscore a critical role of FEF in planning and execution of sequential saccades.

Keywords: Sequence, saccade, frontal eye field, dynamic encoding, microstimulation, inactivation

INTRODUCTION

Sequences of eye movements shift our gaze from one location to another, is one of the most efficient and effective ways for carrying out everyday visual tasks (e.g., looking at a picture, making a sandwich or driving a car). It also provides an excellent model system for studying action sequences because of its fewer degrees of freedom than the limb movement system (for reviews, see Leigh and Ramat, 1999; Hikosaka et al., 2000; Tanji, 2001; Jin and Costa, 2015). However, while the majority of research dedicated to understanding the control of saccadic eye movements is concerned with isolated single saccadic eye movements in response to target and distractor configurations (Bruce and Goldberg, 1985; Andersen et al., 1987), relatively little work has been carried out examining the neural mechanism of the sequences of multiple saccades (Heide et al., 2001; Isoda and Tanji, 2003; Lu et al., 2002; Tobler and M Ri, 2002; Berdyeva and Olson, 2010). Recently, various line of behavioral evidence have postulated the possibility of parallel programming of saccade sequences by the oculomotor system (McPeck et al., 2000; Becker and Jürgens, 1979; Bhutani et al., 2013; McPeck et al., 2003; Minken et al., 1993a; Ray et al., 2012; Ray et al., 2004a; Sharika et al., 2008; Wu et al., 2013). However, at the level of execution, a forthcoming saccadic eye movement can only happen after the current one is completed. This raises a question about where and how the brain transforms the parallel information to a series of saccade movements.

The primate frontal eye field (FEF), a region of the frontal lobe that lies just rostral to premotor cortex, is a critical stage of cortical processing for saccade movement (Guitton et al., 1985; Middlebrooks and Schall, 2014). Many neurophysiological studies of FEF have focused on its role in transforming the outcome of visual processing into a command to orient (Schall, 2004). Accordingly, previous study on the orderly arrangement of three center-out saccades indicated FEF was largely involved in direction selection of forthcoming saccades, but barely in the temporal structure of sequence (Isoda and Tanji, 2003). On the contrary, Basu et al., recently found that FEF movement neurons are involved in concurrent processing of multiple saccade plans, leading to rapid execution of saccade sequences (Basu and Murthy, 2020). These conflict findings raise the possibility of FEF to transform the

parallel information to a series of saccade movement during sequential task, but need to be explored.

To investigate whether and how FEF contribute to the execution of sequential saccades, we trained rhesus macaques to perform a novel self-paced oculomotor sequence task consisting of four (Left-Left-Right-Right) consecutive saccades, which allow a good internal control for studying the sequence-related activities (Geddes et al., 2018). Accordingly, we decide to test whether FEF neurons show some response characteristics related with different level (e.g., element, subsequence or sequence) of sequence execution. We find that FEF shows some activities related with the initiation, switch and termination of the sequence. By comparing the same FEF neuron's activities during sequential saccades and traditional single memory saccade task, we find that FEF uses a dynamically encoding strategy for sequential saccade task. Notably, this dynamic encoding is context-dependent, with different response characteristics for visual- vs. memory-guided saccade sequences. To further investigate the causal role of FEF during sequential saccades, electric microstimulation and reversible inactivation in FEF during the performance of sequential saccades were applied, and the results suggested that FEF might play an important role for both planning and execution of sequential saccades.

RESULTS

Behavioral learning of saccade sequences in monkeys

To investigate whether and how FEF contribute to sequential saccades, two rhesus monkeys (C and I) were trained to perform multiple saccades in sequences in the order of Left-Left-Right-Right (named "LLRR") that were either visually-instructed ("Visually-guided sequence") or internally-memorized ("Memory-guided sequence") (see Materials and Methods for details; **Figure 1A**). **Figure 1B** shows the eye movement of a visually-guided sequence followed by a memory-guided sequence during electrophysiological recordings. It should be noted that the initiation and termination of each saccade was largely self-determined, thus there was no requirement for maintaining fixation during the multiple saccades (**Figure 1–figure supplement 1**). Monkeys were rewarded only if they correctly finished the sequence of four center-out

saccades according to the LLRR order under visually-guided or memory-guided conditions.

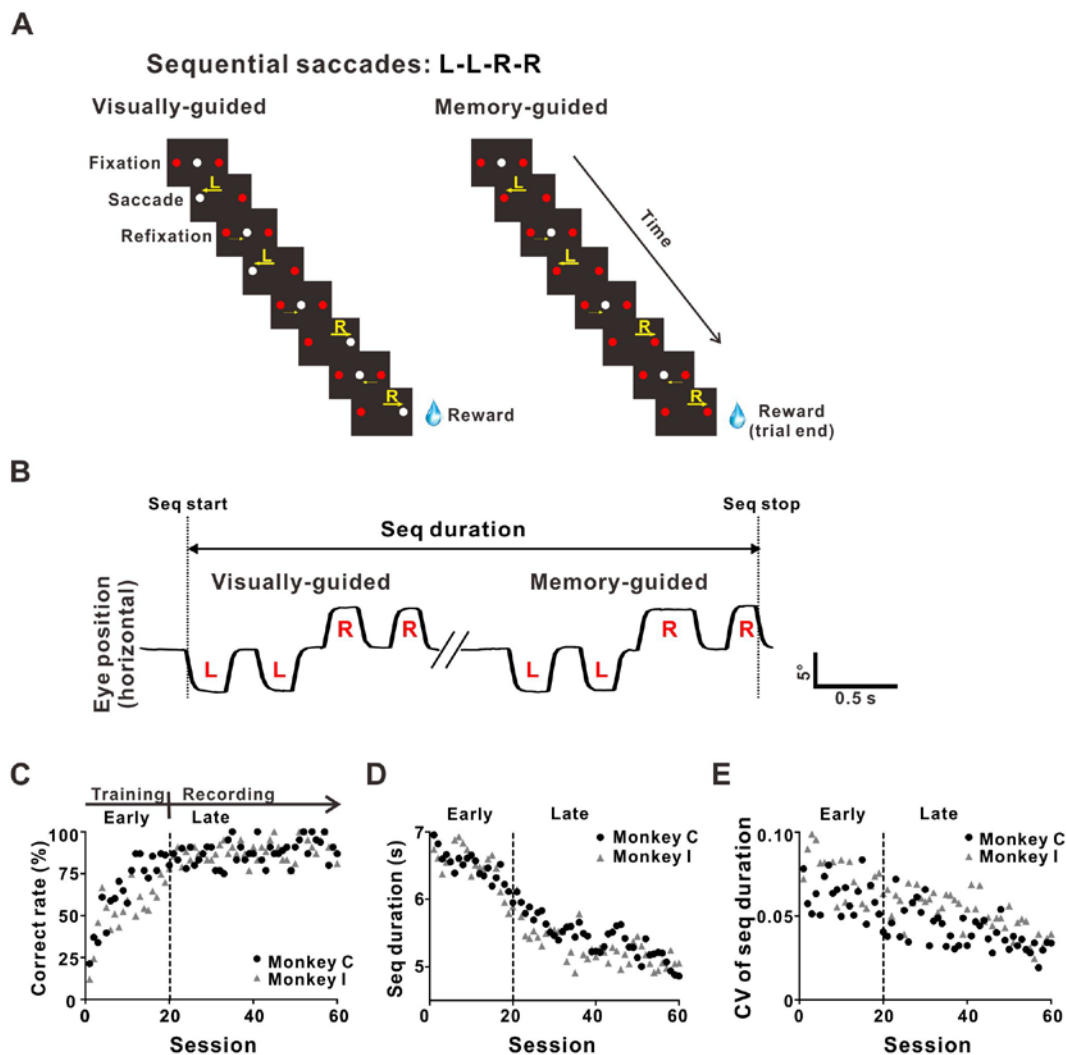


Figure 1. Monkeys learned the sequential saccade task.

(A) The schematic paradigm of sequence task. Monkeys were trained to perform self-paced visually-guided (left) and memory-guided (right) sequential saccades.

(B) Samples of a single subject's eye trace for a full sequence. The x-axis and the y-axis are time and horizontal eye position, respectively. The downward eye trace indicates that monkey moving to the left, while the upward eye trace represents moving to the right.

(C) Correct rate of sequence performance before and after electrophysiological recording. A successful sequence is defined by finishing a visually-guided sequence (four center-out saccades in the order of "LLRR") and a memory-guided sequence.

(D) The execution time of the whole sequence ("Seq duration" defined in **Figure 1B**) decreased during the sequence learning.

(E) The coefficient of variation (CV) of execution time decreased with training. Early: training period before electrophysiological recording; Late: electrophysiological recording period. One session contained 20 – 50 trials.

Through training, the percentage of successful sequence (measured as “correct rate”) gradually increased across sessions (**Figure 1C**). When the correct rate of performance reached and maintained a level higher than 75%, we started electrophysiological recordings (marked with a dashed line in **Figure 1C**). At the same time, the duration of time required to perform the whole sequence of saccade (named “seq duration”, consisting of both visually- and memory-guided sequence) at the late stage (mean \pm SD: 5355 \pm 32 ms) was significantly shorter than the early stage (**Figure 1D**; mean \pm SD: 6475 \pm 44 ms, $p < 0.01$ in Wilcoxon signed rank test). Similarly, the coefficient of variation (CV) of sequence duration also decreased (**Figure 1E**; early: 0.067 \pm 0.002, late: 0.046 \pm 0.001, $p < 0.01$ in Wilcoxon signed rank test). These results indicate that the monkeys can learn the LLRR sequence, demonstrating quicker, more robust and stereotyped sequence performance with training.

FEF neurons showed distinct direction preference during sequential vs. single saccades

The FEF, extended along the anterior bank of the arcuate sulcus, was defined as the area from which low-threshold saccades could be evoked by microstimulation. Guided with the MRI scans (**Figure 2A**) and microstimulation (**Figure 2B**), we recorded from well isolated single neurons in FEF without prescreening, and collected activity from totally 226 (Monkey C: 117, Monkey I: 109) FEF neurons during the LLRR sequential saccade task. These neurons were recorded from the right hemisphere of monkey C ($n = 117$), left ($n = 41$) and right ($n = 68$) hemisphere of monkey I, respectively (**Figure 2A**). The relevant penetrations (marked with red dots) on the recording grids were shown in **Figure 2C**. It should be noted that for most recording sites (Monkey C: $n = 111$; Monkey I: $n = 54$), we also confirmed the physiological activities with a traditional single memory saccade task (**Figure 2–figure supplement 1A**) and classified these neurons into visual (6%, **Figure 2–figure supplement 1B**), visuomotor (20%, **Figure 2–figure supplement 1C**) and motor neurons (74%, **Figure 2–figure supplement 1D**) according to their visual and saccadic responses (**Figure 2–figure supplement 1E, F**).

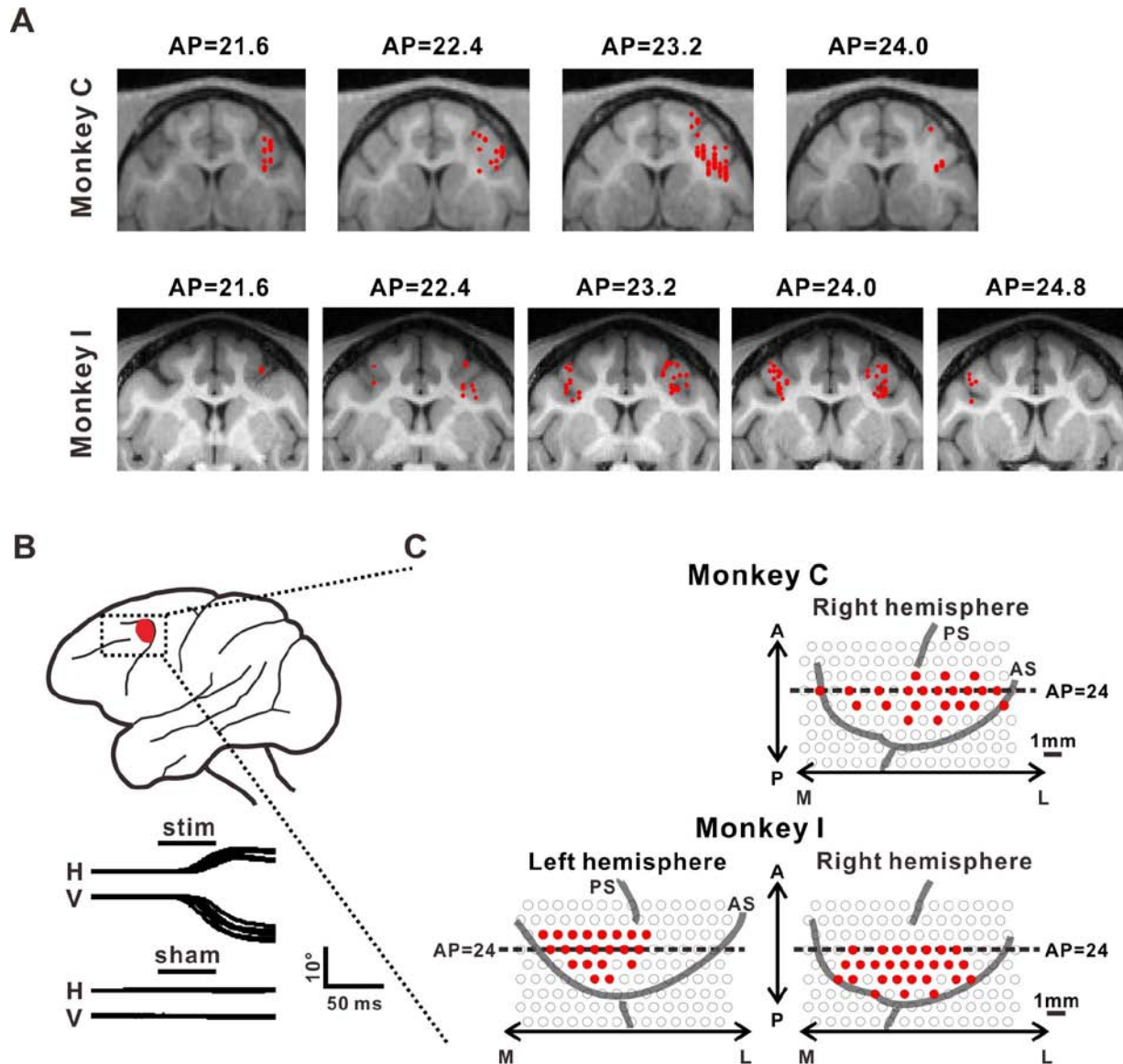


Figure 2. Anatomical localization of recording sites in monkey C and monkey I.

(A) Neural recording sites were identified by magnetic resonance imaging. Recording sites of 2 monkeys were overlaid on magnetic resonance images (upper panels: Monkey C, $n = 117$ cells; lower panels: Monkey I, $n = 109$ cells). Coronal sections, spaced 0.8 mm apart, are shown from posterior to anterior; cells (marked with red symbols) located within 0.8 mm of each section were projected onto that section.

(B) FEF area was also verified by electrical microstimulation. Examples of 50 μ A and sham stimulus at FEF (marked with red symbols) were presented.

(C) The penetration sites of FEF on the recording grid, marked with red filled circles.

Traditionally, FEF was considered to play a major and simple role in determining the direction of single forthcoming saccades (Bruce and Goldberg, 1985; Bruce et al., 1985; Schall, 1991; Isoda and Tanji, 2003). Since most cells were tested with both

single memory saccade and sequential saccade tasks, we first examined whether the saccade selectivity was maintained during the sequential task. **Figure 3A** shows an example FEF neuron with strong direction preference to the leftward saccade during single memory saccade task. Similar preference was observed when monkey was performing sequential saccade tasks (**Figure 3A**, right panel), by comparing the firing rate preceding saccades in the left and right directions. This type of neurons was classified as “consistent” cells. Interestingly, we also observed some cells exhibited different direction preference between these two tasks, as shown in **Figure 3B**. This cell had a leftward preference during single saccade task, but more activities were observed when monkey was making the 1st rightward saccade during LLRR saccade sequence (right panel, **Figure 3B**). It should be noted that we verified the inconsistent direction preference by maintaining online good isolation from single neuron and also verified the spike waveform with offline analysis, as shown in the inserted right upper panels for the spike waveforms. Accordingly, such cell was classified as “inconsistent” cell.

Among 155 cells recorded from FEF with significant leftward or rightward saccade preference, around two-thirds of neurons (102/155) exhibited “inconsistent” directional preference in sequence condition compared with the single saccade condition. The percentage of “inconsistent” cells was higher in motor cells (71.9%, $n = 87$ of 122 cells) than in visuomotor cells (48.1%, $n = 15$ of 33 cells, $p = 0.0062$ in Fisher’s exact test; **Figure 3C**). The proportion of “inconsistent” vs. “consistent” cells was similar in two monkeys and there was no individual difference ($p = 0.79$ in Fisher’s exact test **Figure 3D**). Since the saccadic direction and amplitude in single memory saccade were exactly the same as in sequential saccades (7 degree of visual angle; see Methods), the large proportion of “inconsistent” cells in FEF indicates that FEF might be involved in dynamic encoding of the forthcoming saccade direction depending on the previous saccade history.

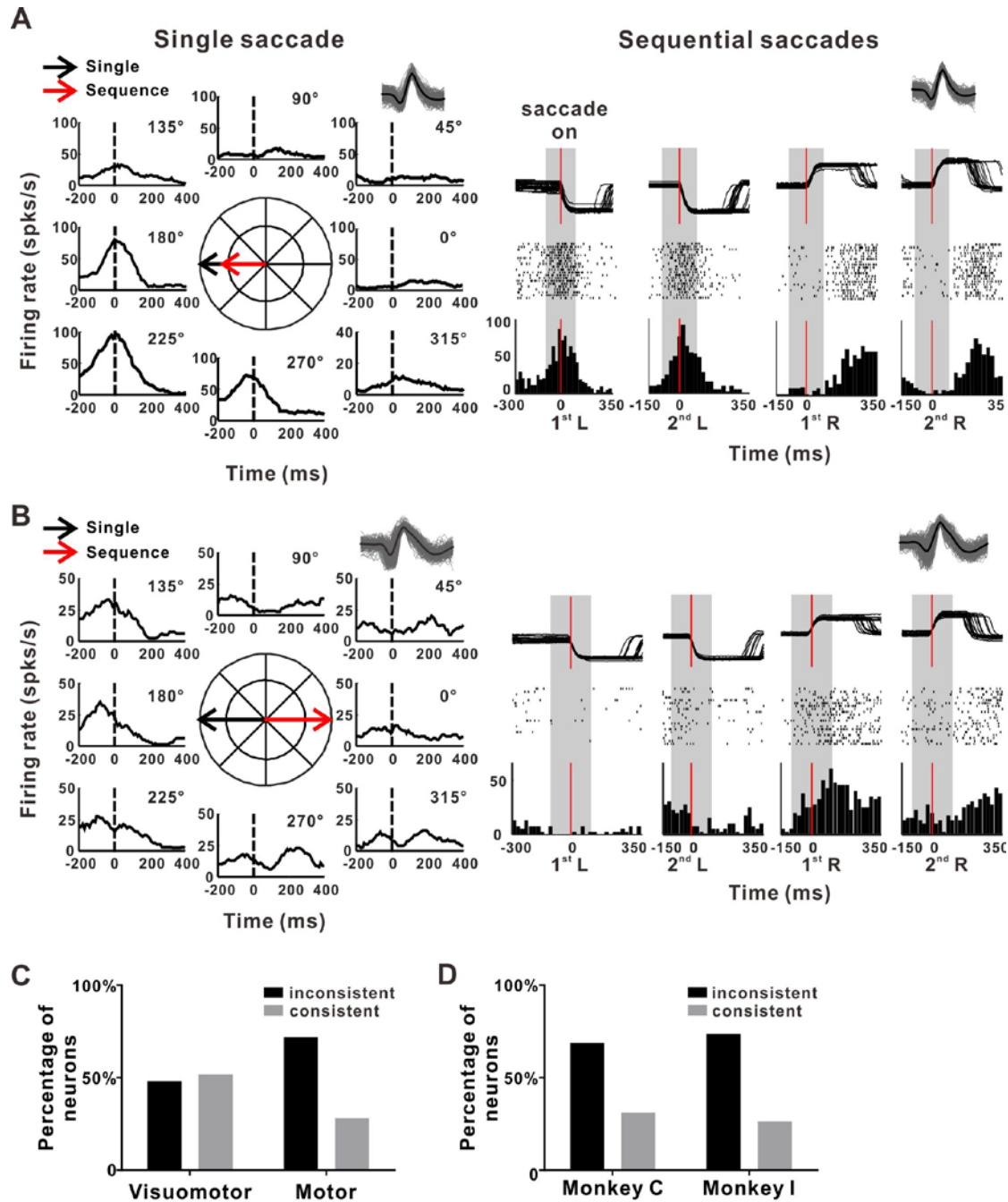


Figure 3. Dynamic encoding of saccade direction in FEF.

(A) The FEF example neuron with consistent direction preference in the single memory-guided saccade task (left) and sequential saccade task (right). Same neuron recorded in two tasks was verified by the waveforms of spikes (insets).

(B) An example neuron with inconsistent direction preference during two different tasks.

(C) The distribution of consistent and inconsistent cells in visuomotor and motor groups. $n = 165$ neurons, Wilcoxon signed rank test.

(D) Similar proportions of consistency in two monkeys.

FEF neurons encode sequence structure

We then investigate whether FEF neurons encode the sequential-related information beyond the direction of single saccade. To address this question, FEF neuron activities during each saccade of the LLRR sequence were analyzed at different levels (element, subsequence and sequence) of sequential structure (Geddes et al., 2018). Consistent with previous study (Isoda and Tanji, 2003), we did observe that some FEF neurons only respond to specific direction, as shown in **Figure 4A-C**. An example with stronger firing rate to the leftward saccades (61 spks/s) than to the rightward saccades (8 spks/s) ($p = 1.2 \times 10^{-14}$, paired t test) was shown in **Figure 4A**, and there is no significant difference between two left saccades ($p = 0.93$, one-way ANOVA with Tukey's multiple comparisons test) or two right saccades ($p = 0.082$, one-way ANOVA with Tukey's multiple comparisons test). As a comparison, **Figure 4B** shows another example FEF neuron with stronger firing rate to the rightward saccades. Among the population cells recorded from FEF, about half (45.9%, $n = 95$) neurons showed such activation related to each individual saccade direction within the sequence (here we called "Element" cell). Among these element cells, 36 (37.9%) neurons preferred to the left saccades, 23 (24.2%) neurons selectively tuned to the right saccades and the rest 36 (37.9%) neurons do not show significant preference to the leftward or rightward saccades (**Figure 4C**).

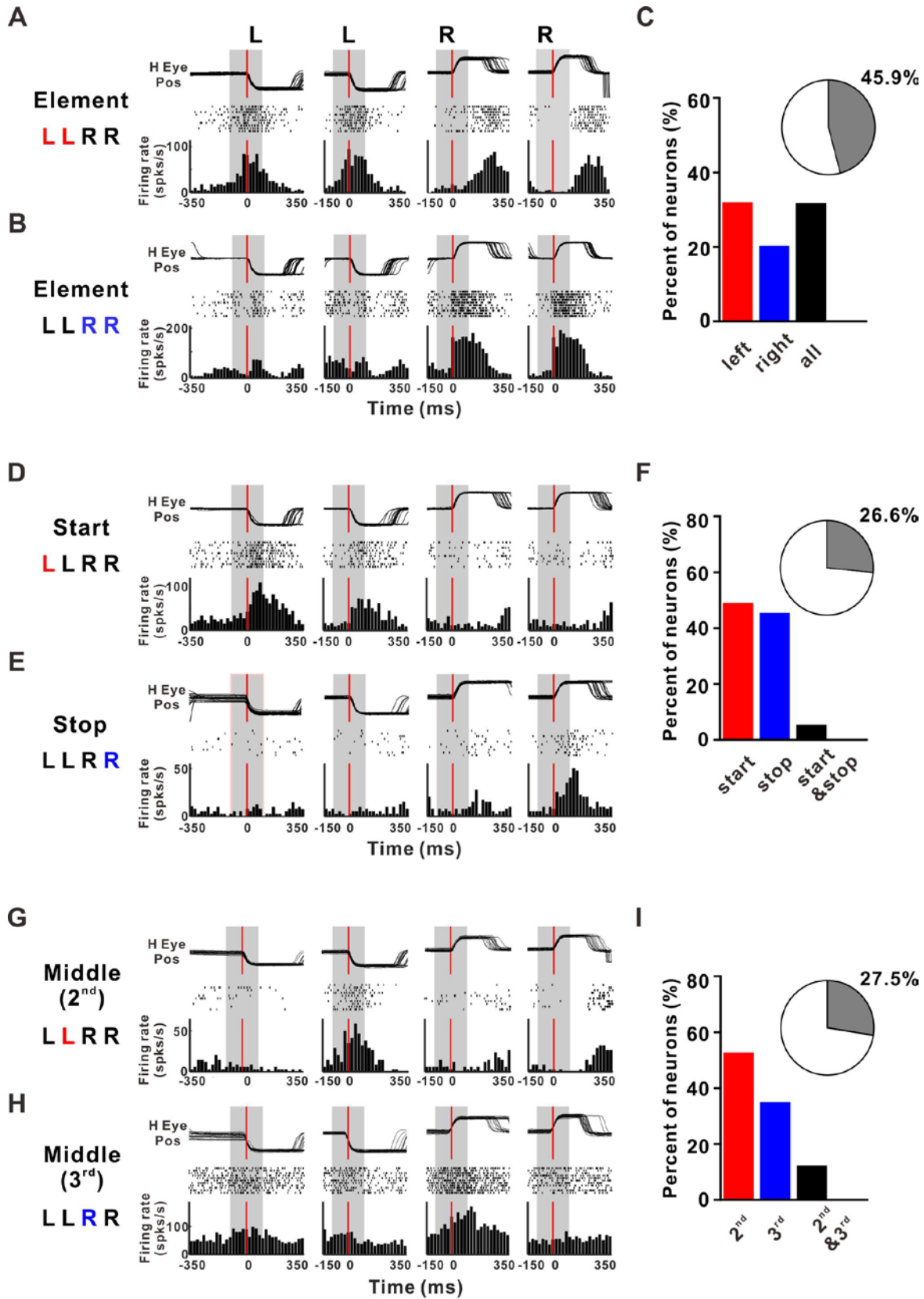


Figure 4. FEF neurons encode sequence structure.

(A-B) Example neurons with responses to each preferred element.

(A) show the activities of element example preferred leftward saccade during four saccades (Left, Left, Right, Right) within the sequence: Top: the superimposed eye traces from 20 repetitions, aligned to the initiation of the 1st leftward saccade, 2nd leftward saccade, 1st rightward saccade, and 2nd rightward saccade; Middle: each dash indicates a spike. Bottom: Peri-event time histogram (PETH) of the same neuron.

(B) Another element example with preference to the rightward saccade.

(C) Proportion of FEF showing element activity. The percentage among the whole recorded FEF was presented as pie plot in the inset.

(D-E) Example neurons with start **(D)** and stop activity **(E)**.

(F) Proportion of FEF showing sequence start/stop activity.

(G-H) Example neurons with subsequence switch-related activity (**G**: example preferred to the end of left-subsequence; **H**: example preferred to the start of right-subsequence). **(I)** Proportion of FEF showing subsequence switch-related activity.

We then investigate whether FEF neurons encode the sequential-related information beyond the direction of single saccade. To address this question, FEF neuron activities during each saccade of the LLRR sequence were analyzed at different levels (element, subsequence and sequence) of sequential structure (Geddes et al., 2018). Consistent with previous study (Isoda and Tanji, 2003), we did observe that some FEF neurons only respond to specific direction, as shown in **Figure 4A-C**. An example with stronger firing rate to the leftward saccades (61 spks/s) than to the rightward saccades (8 spks/s) ($p = 1.2 \times 10^{-14}$, paired t test) was shown in **Figure 4A**, and there is no significant difference between two left saccades ($p = 0.93$, one-way ANOVA with Tukey's multiple comparisons test) or two right saccades ($p = 0.082$, one-way ANOVA with Tukey's multiple comparisons test). As a comparison, **Figure 4B** shows another example FEF neuron with stronger firing rate to the rightward saccades. Among the population cells recorded from FEF, about half (45.9%, $n = 95$) neurons showed such activation related to each individual saccade direction within the sequence (here we called "Element" cell). Among these element cells, 36 (37.9%) neurons preferred to the left saccades, 23 (24.2%) neurons selectively tuned to the right saccades and the rest 36 (37.9%) neurons do not show significant preference to the leftward or rightward saccades (**Figure 4C**).

However, nearly a quarter (26.6%, $n = 55$) FEF cells showed sequence-level start/stop-related activity, as shown in **Figure 4D-F**. A start example was shown in **Figure 4D**, with clear preference to the first left saccade. To quantify the involvement of

FEF in higher structural level of a learned sequence, we defined a Start Index (SI) to indicate the rank selectivity by comparing the difference of neural responses across these two left saccades ($(f_{L1}-f_{L2})/(f_{L1}+f_{L2})$, see Methods for details). For this example, the SI was 0.25 ($p = 2.3 \times 10^{-4}$, one-way ANOVA with Tukey's multiple comparisons test). **Figure 4E** illustrated an example of stop cell, with higher firing rates to the last rightward saccade than to the first rightward saccade. Similarly, we also defined an End Index (EI) by comparing the responses to the two right saccades ($(f_{R2}-f_{R1})/(f_{R2}+f_{R1})$, see Methods), and EI for this example is 0.46 ($p = 0.0019$, one-way ANOVA with Tukey's multiple comparisons test). Across the population, the proportions of FEF neurons preferred "start" and "stop" were close (49.1% vs. 45.5%, **Figure 4F**). Besides, we also observed a few cells ($n = 3$, 5.4%) with both preference to the first leftward saccade and the last rightward saccade, named "start & stop" cell.

Another quarter ($n = 57$, 27.5%) FEF neurons were selectively active during the transition from the left to the right subsequences (**Figure 4G-I**), with stronger firing rate to the 2nd saccade (or the last saccade for the left subsequence, see the example in the upper row in **Figure 4G**) or the 3rd saccade in the sequence (or the first saccade for the right subsequence, see the example in the bottom row in **Figure 4H**). Among the population, the percentage of cells with preference to the 2nd saccade (52.6%) is slightly higher than that preferred to 3rd saccade (35.1%). A few cells ($n = 7$, about 12%) with preference to both 2nd and 3rd saccade in the sequence (**Figure 4I**).

Together, these data suggest that FEF not only encode specific saccade direction but also exhibit strong sensitivity to the structure of sequence. In other words, FEF can be dynamically involved in encoding both the direction and the abstract structure of saccade sequences at element, subsequence and sequence of all three levels.

Context-dependent sequence encoding in FEF

To further demonstrate the dynamic coding in FEF, we also compared the activities of the same FEF neurons between visually- and memory-guided sequential saccades, since saccade movements can be guided by external and internal memory and both factors are important for sequence learning and execution under different

environmental conditions (MacAvoy and Bruce, 1989; Pierrot-Deseilligny, 1991). **Figure 5A** illustrates the firing activity of an example FEF neuron during the performance of visually-guided sequence and memory-guided sequence. It is evident that the neuron exhibited strong firing activity during the switch from the LL to the RR subsequence during memory- but not visually-guided sequential saccades, although this cell had similar rank activities for both tasks (preferring to 3rd saccade or 1st rightward saccade in the current sequence). We also found that some FEF neurons changed the rank activities, as illustrated in **Figure 5B** (for a start cell in memory sequence but not in visually task) and **Figure 5C** (for an end cell during visually sequence but with middle activities during memory task).

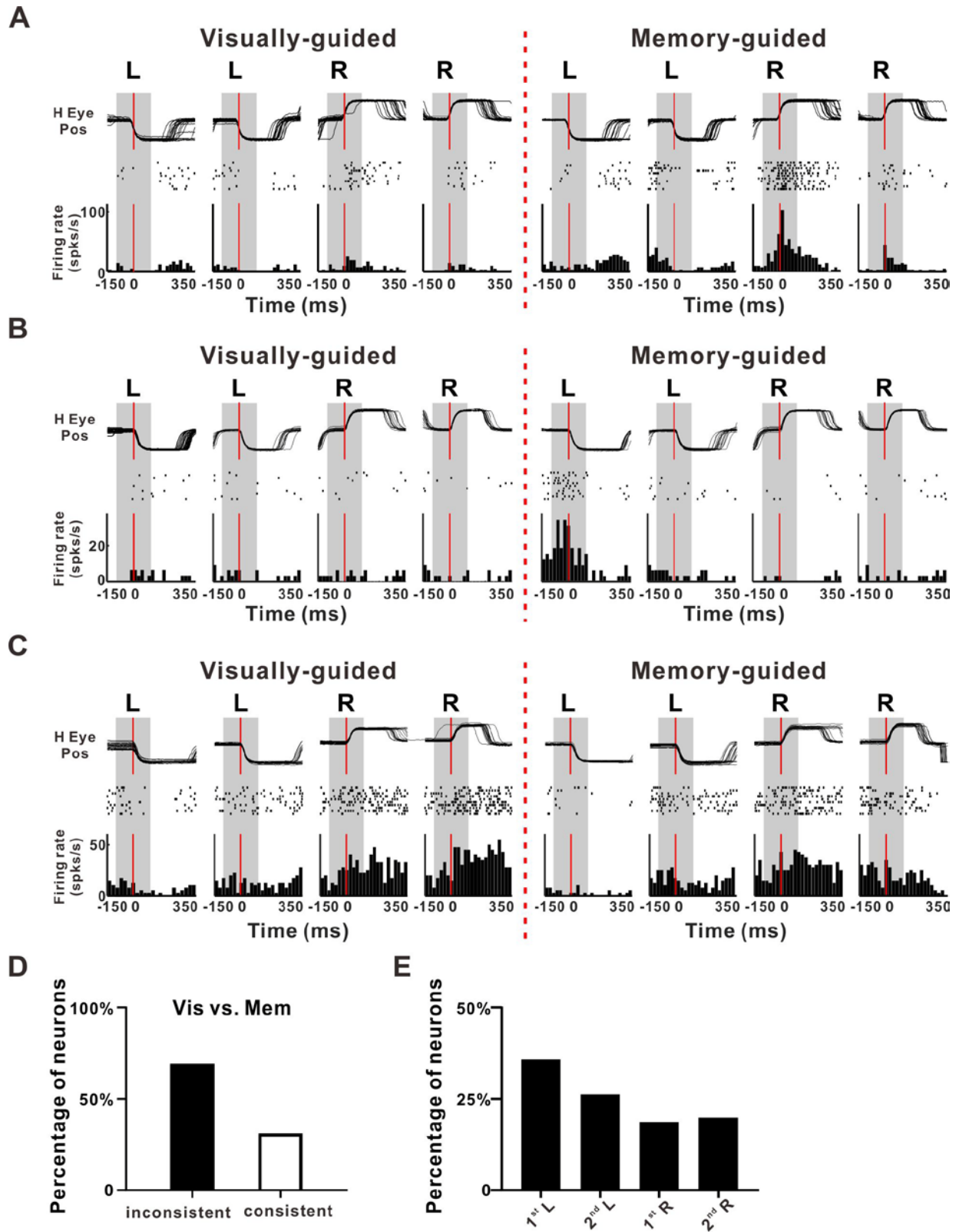


Figure 5. Context-dependent sequence-related neuronal activity in FEF.

(A) A representative neuron exhibiting different activity in visually- and memory-guided contexts.

(B) An example neuron with start activity in memory-guided sequence but not in visually-guided sequence.

(C) An example neuron with clear end activity in visually-guided sequence but with middle activities (stronger responses to 3rd saccade in the sequence) during memory-guided task.

(D) The percentage of cells with (black bar, n = 156 cells) or without (gray bar, n = 70 cells) significantly different firing during visually- vs. memory-guided sequence saccade task ($p < 0.05$, paired t test).

(E) The percentage of cells with significantly different firing between two contexts at different action positions within sequence ($p < 0.05$, paired t test).

To quantify the dynamic encoding characteristics reflected by difference between these two tasks, we computed the memory index (MI) $((f_{\text{memory}} - f_{\text{visual}}) / (f_{\text{memory}} + f_{\text{visual}}))$, for details see Methods) in which MI = 1 means the neuron only responds during memory- but not visually-guided sequence and MI = -1 means vice versa. For this particular cell in **Figure 5A**), the MI is 0.47 ($p = 2.5 \cdot 10^{-8}$, paired t test). Although there was no significant difference between the two modes of sequence at the behavior level ($p > 0.05$ in Wilcoxon rank-sum test; **Figure S1**), 69% (156/226) of FEF neurons demonstrated context-dependent characteristics (**Figures 5D**), with significantly ($p < 0.05$, paired t test) different firing activities for the same action element in the sequence between visually-guided and memory-guided task. Among these cells, 35.63% showed difference for the 1st L saccade between visually- and memory-guided sequential saccade tasks, while 26.12%, 18.54% and 19.71% fired differently between these two contexts for the rest 2nd L, 1st R and 2nd R saccade respectively. It should be noted that the percentages of overlapped action positions were divided equally in the percentage calculation (**Figure 5E**).

Thus, FEF neurons showed clear difference between these two types of sequence tasks, suggesting that FEF controls saccade movements by encoding the combination of sequence structure and specific context in a manner much more complicated than previously thought.

Effects of FEF microstimulation on learned sequence behavior

To test the causal link between FEF activity and sequential saccades, we applied supra-threshold microstimulation (for details, see Materials and Method) when monkey

was performing sequential task to some sites in left and right FEF marked with red dots in **Figure 6A** and **Figure 6B** respectively. For these sites, we can easily use microstimulation to evoke saccade response when monkey was maintaining fixation only. However, it is interesting to note that when we applied same microstimulation as we did in fixation task, the percentage of successfully induced saccade was reduced when monkey was performing memory-guided sequence for both left (**Figure 6C**) and right hemisphere (**Figure 6D**). For 87% trials, saccade can be induced successfully before the 1st action of the sequence, and this percentage is lower during the middle of sequence, with 78%, 38% and 86% for the time point before 2nd, 3rd and 4th saccade of the sequence (**Figure 6C**). Similar results were observed in the right FEF, as shown in **Figure 6D**, indicating that the threshold to generate a saccade with microstimulation is different for the various positions during the sequence performance.

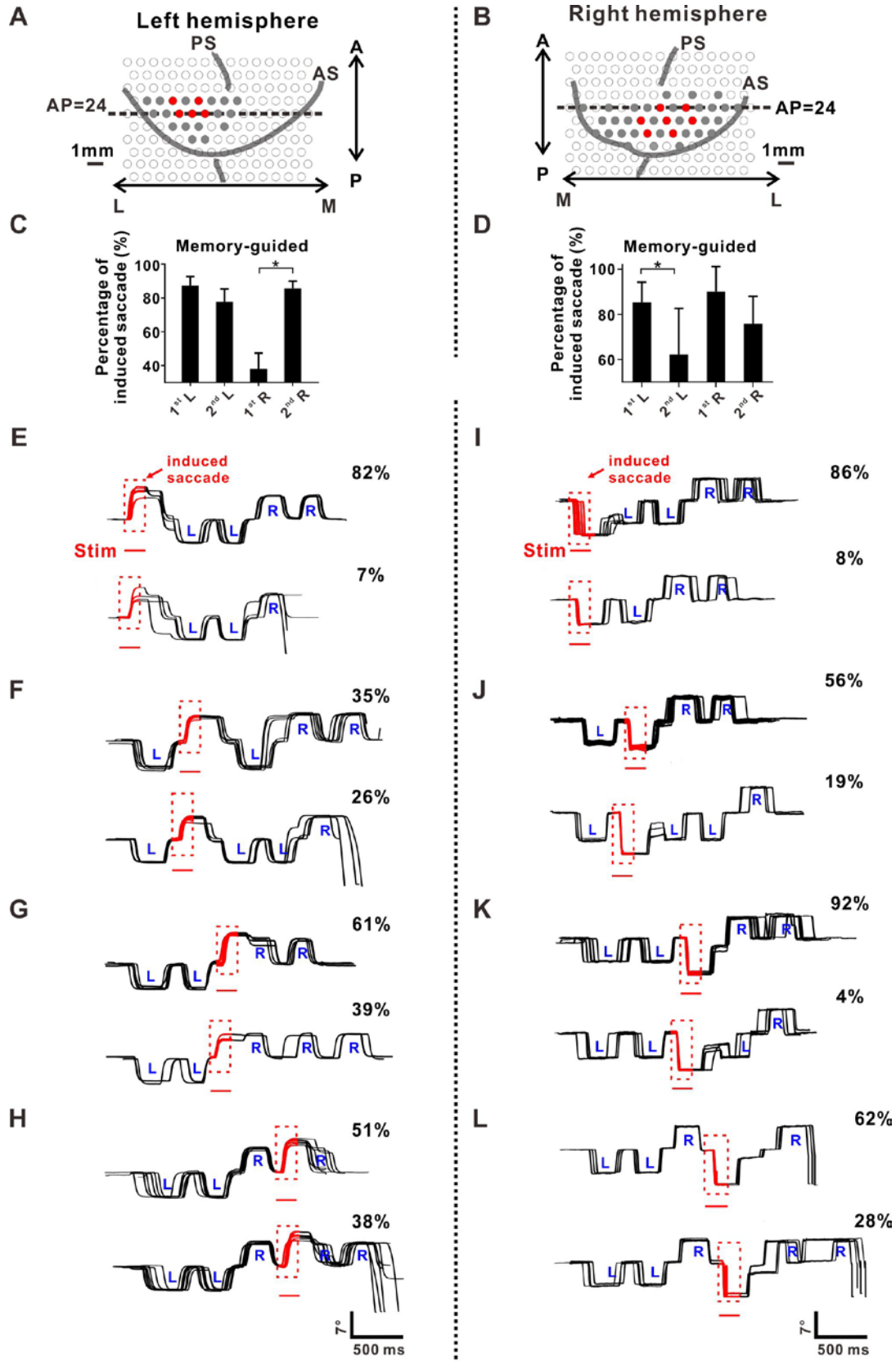


Figure 6. Effects of supra-threshold microstimulation of FEF on sequential saccades. (A-B) Location of all the penetrations for supra-threshold microstimulation in left **(A)** and right **(B)** hemisphere on the recording grid, marked with red filled circles.
(C) The percentages of successfully evoked saccade by stimulation at different time point within memory-guided sequence for left hemisphere (n = 14 penetrations, 1st L vs. 2nd L, p = 0.21; 1st R vs. 2nd R, p = 2.4*10⁻⁵, paired t test).
(D) The percentages of successfully evoked saccade for right hemisphere (n = 6 penetrations, 1st L vs. 2nd L, p = 0.028; 1st R vs. 2nd R, p = 0.21, paired t test). Formats same as left hemisphere **(C)**.
(E-H) Example eye traces obtained during supra-threshold stimulation of left FEF sites at different time point **(E:** stimulation before the first saccade (1st L); **F:** stimulation before the 2nd saccade (2nd L); **G:** stimulation before the 3rd saccade (or 1st R); **H:** stimulation before the 4th saccade or 2nd R) within sequence. Red traces represented the eye traces evoked by electrical stimulation.
(I-L) The effect of stimulation from the right hemisphere. Formats are same as the left hemisphere. For all figures, *p < 0.05, paired t test. Error bars denote SEM. See also **Figure 6–figure supplement 1**.

Figure 6E-H and **6I-L** show how the supra-threshold microstimulation affects the sequence behavior in left and right FEF respectively. Specifically, for rightward saccade induced by the supra-threshold microstimulation before the first saccade of the sequence, the monkey properly initiated and finished the whole sequence of LLRR without any difficulty (**Figure 6E**). Such type of behavior occurred in most (82%) of the trials with stimulation successfully evoked saccade. For the second most (7%) trials, after the induced saccade by microstimulation, monkeys finished the two left saccades and one right saccade, then broke the sequence (for the rest trials, see **Figure 6–figure supplement 1A**). When the rightward saccade was induced before the 2nd left saccade of the sequence, the monkey ignored the evoked saccade and continued to finish the correct rest of the sequence for about 35% trials (upper panel, **Figure 6F**), and reset the sequence for about 26% trials (lower panel, **Figure 6F**) (for the rest trials, see **Figure 6–figure supplement 1B**). These data suggested that the monkey could distinguish the saccade elicited by the external FEF stimulation from those internally generated, and confirmed that the learned action sequences are not organized in a serial chain but likely in a hierarchy (Geddes et al., 2018). When the rightward saccade was evoked before the 1st or 2nd right saccade in the sequence, the monkey usually adjusted the eye position to the proper position after the induced saccade, so that the saccade was successfully integrated to the overall sequence (**Figure 6G & 6H**, respectively). **Figure 6I-L** showed the results of sequence action after the left saccade was induced from the right hemisphere microstimulation at different time point. Overall, the induced saccade

can be either ignored or adjusted to be integrated into the overall sequence without significant disruption of the learned sequence structure. Beside this supra-threshold microstimulation, we also tried sub-threshold microstimulation in FEF, but no clear significant effect was observed on the execution of sequential saccades (see **Figure 6–figure supplement 2-3**): monkey did not break or stop the sequential saccade task during stimulation, and only saccade latency increased for a few sites (Suppl **Figure 6–figure supplement 2D**, and **Figure 6–figure supplement 3A-B**). These findings together suggest that perturbing FEF activity in any sequence position could evoke saccade but does not affect the following sequence execution, implying a hierarchical behavioral organization of learned saccade sequences (Geddes et al., 2018).

Effects of inactivation of FEF on sequential saccades

Since FEF is part of a network of cortical and subcortical areas that controls eye movements, microstimulation only in FEF without change the structure of sequential saccade does not tell the exact role of FEF during sequential saccade. To further explore a clear function of FEF in sequential saccades, we turned to reversible chemical inactivation experiments to analysis the deficit in oculomotor performance. Thus, we placed the injections in different sites of the FEF representing different saccade vectors. Two example inactivation sites were illustrated in **Figure 7A**: stimulation of the site in the left hemisphere before injection consistently elicited an up-rightward saccade indicated by the red arrow; stimulation of the right hemisphere site evoked down-leftward saccade indicated by the blue arrow. Neural activity surrounding the injection cannula tip was typically silenced by the end of the 20 min injection period, confirming the inactivation effect after successful delivery of the drug (right panel, **Figure 7A**).

For each inactivation experiment, behavioral performance was measured every day during a period of a week. On the first two days of each week, control data were collected before inactivation (“pre”). On the day of the muscimol injections, a block of behavioral data was obtained immediately after inactivation (“0h”). On the morning of the following day, a block was performed (“12h”), followed by another block of trials 36h after inactivation (“36h”). Results of several example eye traces after inactivation were compared with “pre” control in **Figure 7B**. Overall, monkey’s performance was severally

affected around “12h”: for some trials, monkey can finish the whole sequence (red and blue traces for left and right hemisphere respectively), but the sequence duration was greatly increased (pre vs. 12h: 3835 ms vs. 5965 ms for left hemisphere; 3745 ms vs. 5115 ms for right hemisphere). For the majority of trials at 12h, monkey just break sequence, as shown for the black traces at 12h in **Figure 7B**.

For the trials with whole sequence finished, **Figure 7C** summarized the effect on sequence duration from 4 inactivation experiments. It is obvious to note that these trials was performed more slowly at 12h after inactivation, with averaged duration (Mean \pm SD: left, 5200 \pm 560 ms; right, 3912 \pm 382 ms) significantly larger than “pre” control (Mean \pm SD: left: 2883 \pm 170 ms; right: 2839 \pm 162 ms) ($p = 1.1 \times 10^{-11}$, two tailed t test). However, in most cases, saccade sequences were broken at 12h after muscimol injection (**Figure 7D**) with only 7.8 and 7.7% of correct rate for left and right hemisphere respectively, which are significantly lower than “pre” control ($p = 2.4 \times 10^{-5}$, two tailed t test). And the effect on the memory-guided sequence was more severely than the visually-guided sequence, as shown in **Figure 7E**. For those error trials (monkey did not finish the whole sequence), we also checked how the inactivation affects the actions at different sequence location, as shown in **Figure 7F**. For visually-guided task, most sequence was broken at 1st rightward saccade (1st R) after left FEF inactivation, while most sequence stopped at 2nd leftward saccade (2nd L) during memory-guided task. In addition, the same action at different rank position within sequence was affected differently. As shown in **Figure 7F**, it is obvious that the 1st leftward saccade (vis: 1.4%; mem: 14.1%) was less affected than the 2nd leftward saccade (vis: 16.9%; mem: 38.0%) in the left hemisphere. On the contrary, the 1st rightward saccade (vis: 59.5%; mem: 31.8%) was affected more than the 2nd rightward saccade (vis: 22.3%; mem: 16.1%). For the right hemisphere, we can also see that same actions at different sequence location was affected differently for both visually-guided and memory-guided context with 26.7% for 1st and 57.3% for 2nd leftward saccade during visually-guided sequence, and with 75.8% for 1st and 20.2% for 2nd leftward saccade during memory-guided sequence, respectively(**Figure 7G**). These results strongly indicate that FEF inactivation impaired sequence not solely due to disrupting single saccades.

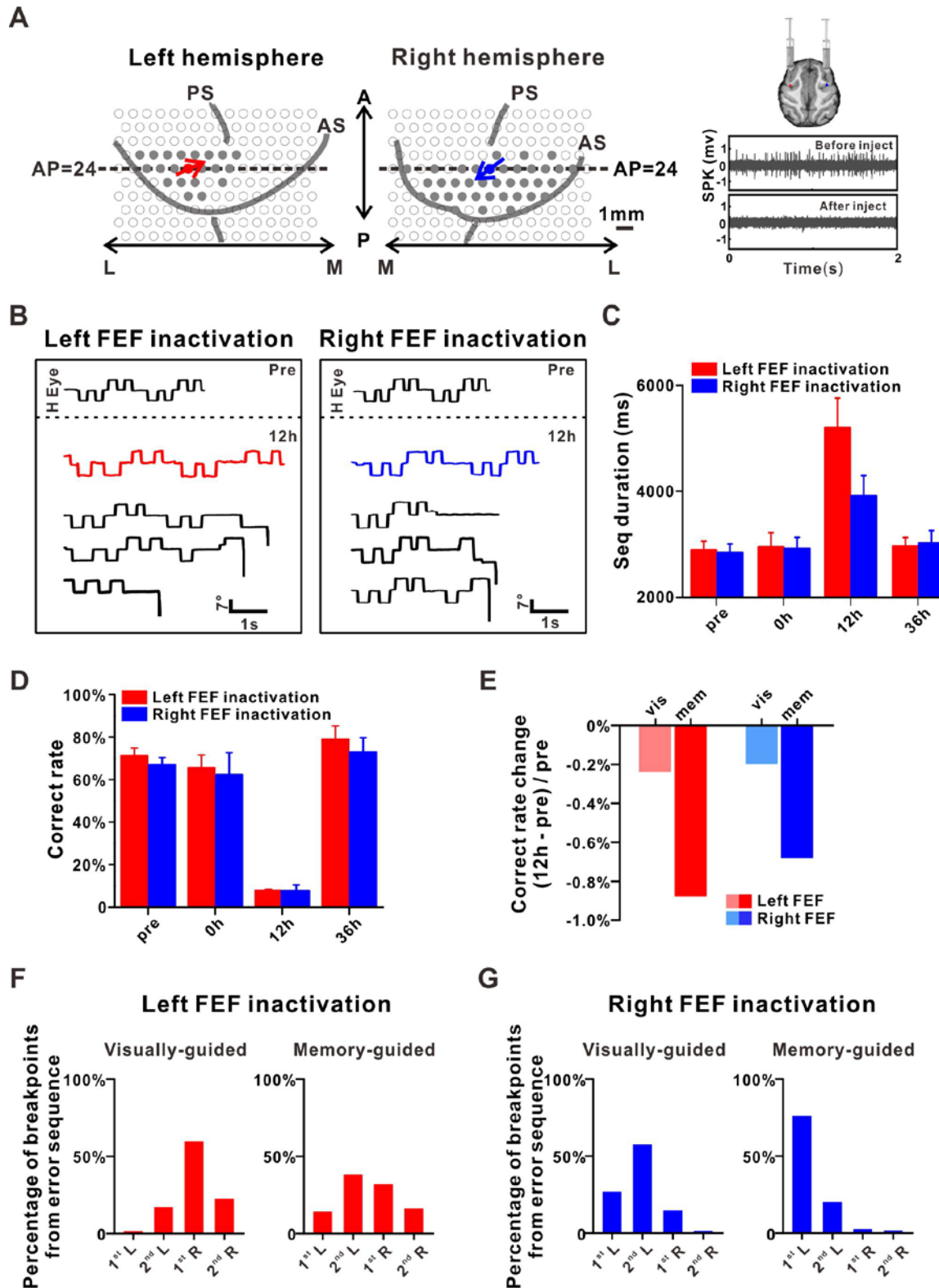


Fig. 7 Effects of muscimol inactivation of FEF on overall task performance.

(A) Location of the two example injection sites. Red and blue arrows indicate the saccade direction evoked by electrical stimulation at these two injection sites in left and right FEF respectively. The

inset figures show that illustrations of muscimol injection in left and right FEF (upper), and the muscimol injection suppresses neural activity in a large region (lower).

(B) Examples of sequential saccade performance at 12h time point after the muscimol injection compared with the control data ("Pre"): red (left FEF) and blue (right FEF) traces indicated the whole sequence was finished with an increased duration, while the black traces show some examples with sequence broken at different locations.

(C) The effect on sequence duration at different time point after muscimol injection (Left hemisphere (Red bar): 12h versus pre/0h/36h, $p = 1.1 \times 10^{-11}$, $p = 0.016$ and $p = 8.9 \times 10^{-5}$, respectively; Right hemisphere (Blue bar): 12h versus pre/0h/36h, $p = 2.2 \times 10^{-8}$, $p = 0.025$, and $p = 0.0056$, respectively, two tailed t test). Only trials with whole sequence (4 center-out saccades in visually-guided together with 4 saccades in memory-guided task) finished were considered.

(D) The correct rate of sequential performance after muscimol injection. The abscissa marks the four different time points at which data were collected: Pre, 0, 12, or 36 h (Red bars represent left FEF inactivation: 12h vs. pre/0h/36h, $p = 2.4 \times 10^{-5}$, $p = 0.021$ and $p = 0.0028$, respectively; Blue bars represent right FEF inactivation: 12h vs. pre/0h/36h, $p = 3.2 \times 10^{-5}$, $p = 0.069$, and $p = 0.0055$, respectively, two tailed t test).

(E) The normalized correct rate change between after 12h and before ("pre") inactivation, separately for visually-guided and memory-guided sequence task.

(F-G) The percentage of trials broke at different sequence location after inactivation in left **(F)** and right **(G)** FEF.

Muscimol data were analyzed using two tailed t test. Error bars denote SEM **(C)** and STD **(D)**, respectively.

Although FEF inactivation with muscimol usually affects both visually- and memory-guided saccades, **Figure 7E** shows the effect to the memory-guided saccades was different from visually-guided sequence. To make a quantified comparison between these two different sequence tasks, we further checked the saccade latency, and found the inactivation effect on the memory-guided saccades was more severe for both single saccade task (for details, see the **Figure 8-figure supplement 1A**) and sequential saccade task (**Figure 8**). Since the ipsilateral saccades were not as strongly affected by the injection as the contralateral saccades, here we only show the example of rightward saccade for left hemisphere in **Figure 8A**. It is notable that the saccade latencies were clearly increased for all the rightward saccades after injection. The population results were summarized in **Figure 8B**. It is interesting to note that the inactivation affects the sequential saccades task more than the single saccade task, with averaged increased latency (127.2 ms for visual and 198.3 ms for memory) in sequential saccade task significantly larger than 46.4 ms in single saccade task ($p = 0.0062$, two tailed t test). In addition, even for the same saccade action during sequential saccades task, the inactivation effect was different between the two leftward or rightward saccades. As shown in **Figure 8B**, the increased saccade latencies for the 2nd rightward saccade

averaged 179.0 ms, larger than the 1st rightward saccade (132.6 ms) during visually-guided sequence, although not significant ($p = 0.18$, one-way ANOVA with Tukey's multiple comparisons test). Opposite effects were observed in the memory-guided sequence, as shown in the right panel of **Figure 8B**, with mean value for the 1st rightward saccade (325.3 ms) significantly larger than the 2nd rightward saccade (153.0 ms) ($p = 0.013$, one-way ANOVA with Tukey's multiple comparisons test). These again strongly suggest that FEF dynamically encodes the sequential saccades and the same saccades in the different position of a sequence are differently affected by FEF inactivation. **Figure 8C** summarized the inactivation effects from population at different time point. Again, the strongest effect was observed at 12h after inactivation for saccade latencies. Similar results were observed for the inactivation in the right hemisphere (**Figure 8D-F**), with stronger inactivation effects for the latencies of the left saccades during the memory-guided sequence and more obvious effects at 12h after inactivation. These findings were further confirmed in a control task where monkeys are trained to perform RRLL sequence, and inactivation has the qualitatively similar effect to the sequence (**Figure 8—figure supplement 1**).

Together, these results suggest that inactivation of FEF affects the saccade differently depending on its position within the sequence, and the FEF activity may thus play a critical role in both organizing and execution of saccade sequences.

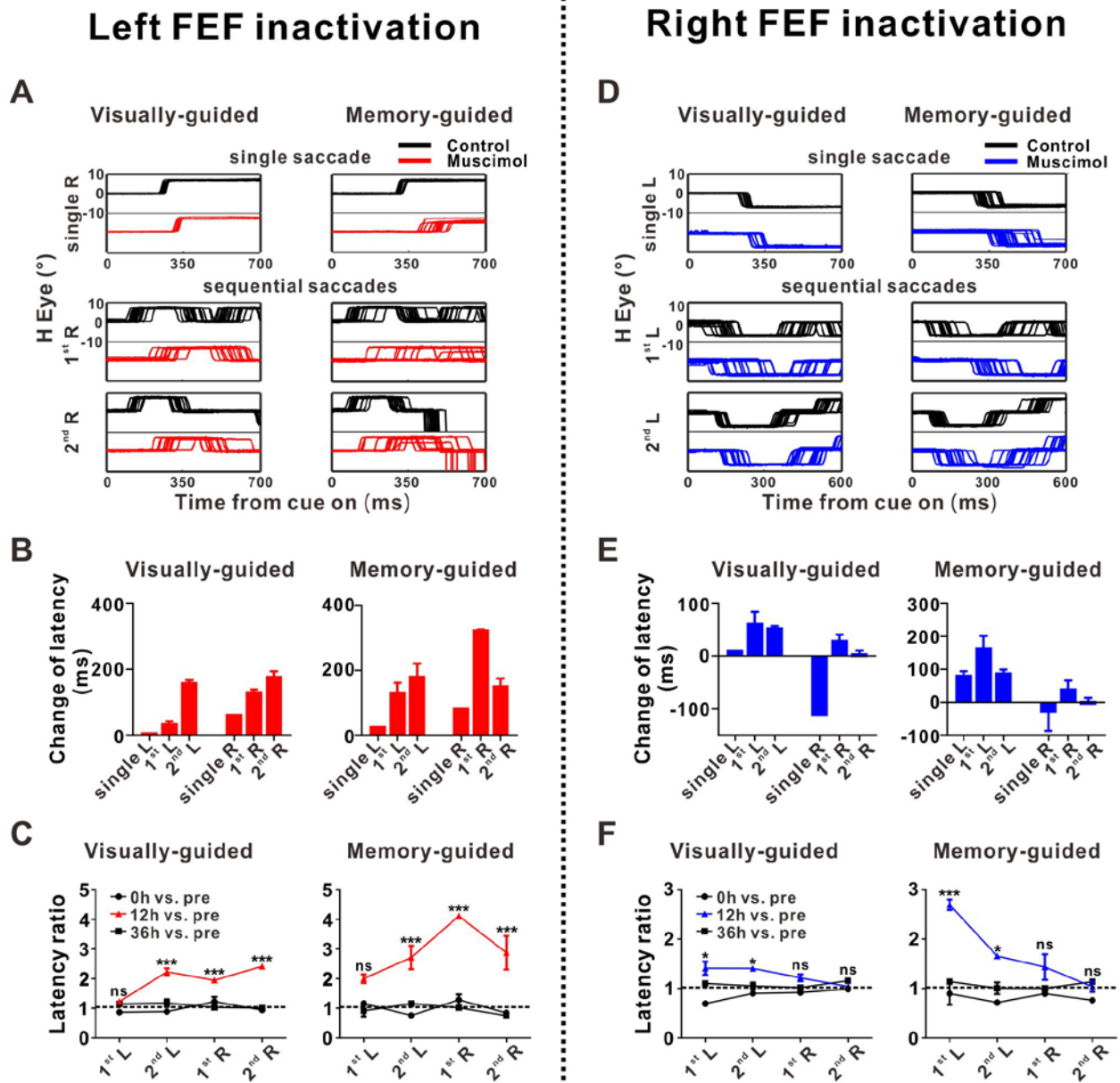


Fig. 8 Effects of muscimol inactivation of FEF on sequential saccade performance.

(A) Eye traces obtained during single saccade task and sequential saccade task at 12h time point after muscimol injections in left FEF (red traces) and control (black traces).

(B) Summary of latency changes at 12h time point after injection. Visually-guided: 1st L vs. 2nd L, $p = 0.23$; 1st R vs. 2nd R, $p = 0.18$; Memory-guided: 1st L vs. 2nd L, $p = 0.23$; 1st R vs. 2nd R, $p = 0.013$, one-way ANOVA with Tukey's multiple comparisons test.

(C) Saccade latency ratio (saccade latency after injection divided by the latency measured before injection) changes as time. 12h vs. pre during visually-guided indicated by red line: 1st L versus 2nd L, $p = 2.0 \times 10^{-4}$; 1st R versus 2nd R, $p = 0.084$; 12h vs. pre (red line) during memory-guided: 1st L versus 2nd L, $p = 0.34$; 1st R versus 2nd R, $p = 0.038$, two-way ANOVA with Tukey's multiple comparisons test.

(D-F) Results from the muscimol injection in the right FEF.

(D) Eye traces obtained during single saccade task and sequential saccade task at 12h time point

after muscimol injections in right FEF (blue traces) and control (black traces).

(E) Latency changes at 12h after injection in right FEF. Formats same as left hemisphere **(B)**. Visually-guided: 1st L vs. 2nd L, $p = 0.23$; 1st R vs. 2nd R, $p = 0.31$; Memory-guided: 1st L vs. 2nd L, $p = 0.035$; 1st R vs. 2nd R, $p = 0.21$, one-way ANOVA with Tukey's multiple comparisons test.

(F) Saccade latency ratio changes as time for right FEF inactivation. Formats same as **(C)**. 12h vs. pre during visually-guided indicated by blue symbols and line: 1st L vs. 2nd L, $p > 0.9999$; 1st R vs. 2nd R, $p = 0.66$; 12h vs. pre (blue line) during memory-guided: 1st L vs. 2nd L, $p = 0.0028$; 1st R vs. 2nd R, $p = 0.38$, two-way ANOVA with Tukey's multiple comparisons test.

For **(C)** and **(F)**, * $p < 0.05$, ** $p < 0.001$, *** $p < 0.0001$, and ns, no significant difference with two-way ANOVA, followed by Sidak's multiple comparisons test. Error bars denote SEM.

DISCUSSION

Dynamic encoding of sequential saccade in FEF

The FEF was first identified as the primary cortical area involved in the control of saccadic eye movements, based on the ability to evoke saccades with low electrical currents (Bruce et al., 1985), and subsequent studies described how neuronal activity in the FEF was related to the selection of the saccade target as well as the decision to initiate the saccade itself (Isoda and Tanji, 2003; Lu et al., 2002; Berdyeva and Olson, 2010). Here we trained monkeys to perform a spatiotemporally heterogeneous sequences (Geddes et al., 2018), with saccade instead. By examining the activity of the same neuron under both single memory saccade and sequential saccades, we demonstrated that for more than 50% of FEF visuomotor and motor neurons (**Figure 3**), the direction selectivity of sequential saccades could not be simply inferred from single saccade behavior. Such dynamic coding scheme contrasts with the classic view of the FEF, and suggests that FEF are more complicated than only sending a specific movement signal to the superior colliculus for controlling single saccades.

Although we observed high ratio of direction selective neurons in FEF (**Figure 4A** and **Figure 2–figure supplement 1**) consistent with previous study (Isoda and Tanji, 2003), still a small part of FEF neurons exhibited sensitivity to the specific position of a saccade within sequence (**Figure 4D-I**). And the sequence-specific activity was more common when we only compared the same two left saccades (**Figure 4D, 4G**) or two right saccades (**Figure 4E, 4H**), indicating the same saccadic actions are not encoded in a same way by FEF. This was further confirmed by the results from FEF inactivation, for different error rate (**Figure 7F-G**) and different latency increased (**Figure 8B, 8E**, and **Figure 8–figure supplement 1D, F**) for the same action but at different time point

of sequence. To some extent, these results strongly support that the psychophysics theory of sequential saccades are processed in FEF in parallel rather than serial (Becker and Jürgens, 1979; Bhutani et al., 2013; McPeck et al., 2003; McPeck et al., 2000; Minken et al., 1993; Ray et al., 2012; Ray et al., 2004; Sharika et al., 2008; Wu et al., 2013). Since most of analyzed FEF neurons were motor cells with significant perisaccadic activity, these dissimilar representations could not be simply explained by visual attention mechanisms. Our results demonstrated that FEF encoded successive target location with embedding structural information such as start/stop state representations in sequential saccades, which could be useful in processing hierarchical actions.

One interesting finding in our data is that the proportion of start or stop cells was greater than that of the sequential-related cells documented in a similar study in FEF (Isoda and Tanji, 2003). The prominent differences may due to the complexity and temporal requirements of behavioral task. The action sequence used in this study is a self-paced task with symmetrical multi-layer structured, a commendable imitation of common motor activities. In addition, the sequence action was well consolidated with long-term training (see **Figures 1C-1E**), so monkeys were more inclined to form a hierarchical structure of movement execution. This also agrees with previous studies in rodents (Jin and Costa, 2015; Geddes et al., 2018), which proposed that the learned action sequences are organized in a hierarchy, and different hierarchical levels may be controlled by different brain regions or networks. Indeed, the proportion of sequence-level start/stop activity observed in FEF is lower than those previously observed in the striatum of mice trained with the similar action sequence (Geddes et al., 2018), suggesting the motor cortex (e.g., FEF in the current study) and basal ganglia might be operating at different levels of this hierarchy (Hikosaka et al., 1999; Jin and Costa 2010; Jin et al., 2014; Jin and Costa, 2015). Future studies should be aimed toward identifying the specific roles of frontal and higher-order motor cortices (Tanji, 2001; Fujii and Graybiel, 2003; Hikosaka et al., 1999b; Lu et al., 2002; Shima et al., 2007;) as well as subcortical regions like thalamus and superior colliculus in the hierarchical control of learned saccade sequences.

Functional role of FEF during sequential saccade

Since sequence-related cells might reflect a higher-order signal coding for a particular direction only in a specific sequence while direction-related cells might have a lower level of specificity as they are active whenever a particular direction is executed irrespective of the sequence, the co-existence of direction-selectivity neurons and sequential-related neurons might suggest several possible roles in FEF.

For instance, it can transfer the information from sequence-specific cells to direction-specific cells, thus FEF might be in charge of decoding each sequence-specific neuron to the appropriate motor output need to be executed. The result of consistent saccade induced by supra-threshold microstimulation integrated to the sequence seems to support this view. And occasionally, perturbing the activities in FEF will result usual performance of the sequence as shown in **Figure 6**. In this view, FEF is an important structure in the distributed system of cortical areas controlling saccade sequence, which may be relevant to some lesion and physiological studies suggested that necessary signals for sequence such as rank selectivity was widely distributed in frontal cortex (Berdyeva and Olson, 2010, 2014).

Another possibility is that FEF can be tuned to multiple diverse factors, and it can flip between them for flexible behavior. FEF can be involved in several saccade tasks at the same time. Thus, the threshold for generating saccade by microstimulation during sequence saccade was increased since the execution of sequence saccade need to cost some circuitry and resources from FEF (**Figure 6B**). And sub-threshold microstimulation delayed the execution of the sequence as shown in **Figure 6–figure supplement 2-3**. These results, together with the inactivation on Target residence time ratio (**Figure 8–figure supplement 2**) were consistent with the some reversible pharmacological inactivation of sites within the FEF (for review of inactivation and lesion experiments in the FEF, see (Tehovnik et al., 2000), with saccades to contralateral visual targets having longer reaction times and lower peak velocities, fewer in number, and less accurately targeted. Lesions of the FEF produce similar deficits that recover with time (Schiller et al., 1987; Schiller et al., 1980).

In summary, though the FEF is clearly part of the network controlling saccades, it appears to be either partly redundant, or complementary to, or acting in conjunction with

other areas. The fact that the additional saccade induced by microstimulation (**Figure 6**) was ignored by the execution of the sequence suggests that although FEF exhibited sequence-related neuronal activities (**Figure 4F, and 4I**), there are additional levels of hierarchical control for the sequence execution (Geddes et al., 2018; Jin and Costa, 2015). The FEF likely acts as a lower level of controller for both planning and execution of sequence saccades. This is further supported by our muscimol experiment results, in which FEF inactivation dramatically disrupts the sequence execution at various positions within the sequence, beyond the impairment of single individual saccades (**Figure 7**). As a comparison, neurons in the striatum have been reported to show sequence-related neuronal activity during the execution of a learned LLRR sequence in mice (Geddes et al., 2018), and optogenetic stimulation of D1-expressing projection neurons in the striatal direct pathway facilitates the ongoing action within the sequence without altering the following sequence execution, like what are seen in the current study (Geddes et al., 2018). However, one noticeable difference is that the action induced by striatal direct pathway stimulation was taken into account by the animals to adjust the rest of sequence being performed (Geddes et al., 2018), whereas the saccade action evoked by FEF stimulation was largely ignored by the animals (**Figure 6**). Furthermore, ablation of striatal D1-expressing projection neurons significantly impairs overall sequence initiation (Geddes et al., 2018), in contrast with the effects of FEF inactivation specifically on subsequence (**Figures 7 and 8**). While we acknowledge that the two studies were performed in different species with mice vs. monkeys, it nevertheless implied again the possible functional difference between motor cortex and basal ganglia for operating at the different levels of hierarchical control for sequence execution (Geddes et al., 2018; Jin and Costa, 2015).

Nevertheless, our current study underscores the dynamic coding of saccadic parameters by FEF neurons, and reveals the underappreciated complexity and importance of FEF in controlling sequential saccades.

MATERIALS AND METHODS

Key resources table

REAGENT or RESOURCE	SOURCE	IDENTIFIER
Experimental Models: Organisms/Strains		
Rhesus Macaque (<i>Macaca Mulatta</i>)	Primate Center	N/A
Software and Algorithms		
MATLAB	MathWorks	https://www.mathworks.com
Tempo	Reflective Computing	http://www.reflectivecomputing.com
Other		
Tungsten Electrodes	FHC	https://www.fh-co.com
Linear Microelectrode Arrays	Microprobes	https://microprobes.com
Magnetic Field Generator	Crist Instrument Company	http://www.cristinstrument.com

Animals

2 male rhesus monkeys (*Macaca mulatta*), C and I, weighing 6–8 kg, were used in current study. Each monkey was chronically implanted with a lightweight acrylic cap for head stabilization and with a scleral search coil in one eye for monitoring eye movements (Crist Instrument Company, MD, USA). Surgical procedures were performed using aseptic apparatuses under isoflurane anesthesia. After recovery from surgery, animals were trained using standard operant conditioning procedures to perform behavioral tasks to obtain liquid rewards (customized reward system). All animal surgical and experimental procedures were approved by the Institutional Animal Care and Use Committee (IACUC) at East China Normal University.

Behavioral Tasks

The experimental setup was the same as previously described (Luna et al., 1998; Chen et al., 2016; Shao et al., 2018). Monkeys were seated in a primate chair, facing a monitor 57 cm in front of them. A real-time experimental data acquisition (Tempo, Reflective computing, MO, USA) and a custom visual stimulus generation system were

used to create the behavioral paradigms and record eye position and electrophysiological data. All experiments were conducted in low-level background illumination.

Sequential Saccade Task. Monkeys were trained to perform four saccades to the targets in the order of left-left-right-right (L-L-R-R; **Figure 1A**). At the beginning of the task, a white central fixation point and two red target points on the left and right were presented. Before sequential saccades, the monkey fixated on a central white fixation point for 100 or 200 ms. Each trial was consisted of two different contexts: visually-guided context and following memory-guided context. For visually-guided sequential task, when the fixation point disappeared, the target point turned white, which indicated the correct saccade direction. If the animal made a saccade to the target within 1500 ms, the target color turned to red again and the central fixation point was illuminated at the same time. Then the animal was required to re-fixate to the central fixation point. The next three saccades were triggered in the same way and correct saccadic sequence was rewarded with a drop of liquid. For memory-guided sequential task, the target points remained red while fixation point disappeared so the monkey needs to remember the sequence of saccades. Animals were also rewarded when finished the memory-guided period. There was no timing restriction for saccades, so monkeys finished this series of saccades at their own pace.

Single Memory Saccade Task. Monkeys performed delayed saccades guided by memory (Hikosaka and Wurtz, 1983; Bruce and Goldberg, 1985), as shown in **Figure 2–figure supplement 1B**. A fixation spot appeared initially at the center of a screen. After maintaining fixation for 500 ms, a target spot appeared at one of eight possible locations throughout periphery of the visual field. The peripheral target spot disappeared after 200 ms. A delay period began and lasted for 800-1,100 ms. At the end of the delay, the fixation spot disappeared, cueing the monkeys to initiate a saccade to the spatial location of the vanished target. If the monkey did so, the target reappeared and the monkey was rewarded for continuing to fixate it for at least 300 ms.

Electrophysiological Recording

We recorded extracellularly from FEF neurons using single-unit tungsten

microelectrodes (FHC; tip diameter 3 μm , impedance 1–2 M Ω). The microelectrode was advanced into the cortex through a transdural guide tube, using a hydraulic microdrive (FHC, USA). Neural signals were amplified, bandpass filtered (400 - 5,000Hz), digitized and recorded (AlphaLab SnR, Israel). Spike time of single neuron was isolated either with online sorting module (AlphaLab SnR, Israel) or with offline sorting software Spike2 V8 (Cambridge Electronic), both of which applied template matching algorithm.

FEF was identified using a combination of magnetic resonance imaging, white/gray matter transitions and evoked saccadic eye movements by microstimulation (**Figure 2**). Usually, saccadic eye movements were evoked from the anterior bank of arcuate sulcus. Penetrations where the typical ballistic eye movements were observed for at least 50% of microstimulation trials (200 Hz biphasic pulse trains, pulse width: 200 μs , interpulse interval: 100 μs , 50~150 ms duration, current magnitude: 30-100 μA ; AlphaLab SnR) were defined as FEF.

Sub-threshold and supra-threshold Microstimulation

During experiment, we first mapped the saccade tuning using the regular microstimulation at multiple locations, ~ 100 μm apart, along each electrode penetration. When we found a span of at least 200~300 μm with consistent saccade tuning, we chose a location with strong response and near the middle of this span as the stimulation site. The electrical stimulation was delivered through a microelectrode placed in FEF and we used similar stimulus mode as above mapping procedure but with 200 ms duration and different amplitude (sub-threshold: 20 μA ; supra-threshold: 100-200 μA) at the time when monkey settled on the fixation window and was about to perform the following saccade. Thus, in sub-threshold microstimulation experiment, monkeys were still able to finish the sequential saccades smoothly and accuracy of performance did not be hampered, excluding the influence on actions by discontinuous interruption. For sub-threshold microstimulation, one experiment block contained 250 trials, 80% of which were with stimulation and 20% were sham controls. Stimulations on each combination of 4 numerical orders and 2 contexts (visually-guided and memory-guided) were randomly interleaved so that animals could not predict which action within the sequence will be stimulated, thus 25 repetitions for one saccade condition on

average. Similar procedure was carried for supra-threshold microstimulation, but with 20% of trials with stimulation. Thus, one experiment block contained more than 400 trials to keep at least 10 repetitions.

Reversible inactivation

To test for a causal role of FEF on sequential saccade, we attempted to influence behavior by reversible chemical inactivation with muscimol (a GABA_A agonist). Using a “microinjectrode,” consisting of a fine tungsten electrode inside of a thin cannula (Chen et al., 2001; Chowdhury and DeAngelis, 2008), we position our electrode within FEF while recording multi-unit activity was monitored. Then we slowly inject 2 μ l (10 μ g/ μ l) of muscimol over ~20 minutes using a minipump. This should inactivate, for duration of several hours, a roughly spherical region with a radius of ~2 mm (Arikan et al., 2002). Performance on each task (above) is characterized both before and after the injection.

Data Analysis

All analyses were performed using custom scripts written in MATLAB (Mathworks, Natick, MA). 226 sequence task related neurons were selected (80%, $p < 0.05$ in Wilcoxon rank-sum test compared with baseline fixation response). Among these cells, 165 cells were recorded in both sequence and single memory saccade tasks, which were analyzed for comparison of single and sequential saccades. Peri-event time histograms (PETHs) was constructed using 5-ms time bins. Neuronal responses of 200 ms after visual stimulus and ± 100 ms from saccadic onset were used to calculate visual and saccadic responses, respectively. For data acquired from memory-guided saccade task, a peak response vector was yielded from PETH, which contains the maximal response across directions at each point in time. We performed Rayleigh test to assess the statistical significance of direction selectivity in visual and saccadic responses and the preferred direction was the direction of peak response vector summation.

For sequential saccade task, we defined three indexes to describe how different levels of sequence were encoded. Direction index (DI) was given by:

$$DI = \frac{f_{left} - f_{right}}{f_{left} + f_{right}},$$

where f_{left} and f_{right} are the average responses from saccades towards left and

right directions, respectively. Start index (SI) was given by:

$$SI = \frac{f_{L1} - f_{L2}}{f_{L1} + f_{L2}},$$

where f_{L1} and f_{L2} are the average responses from the first and second leftward saccades in the sequence, respectively. End index (EI) was given by:

$$EI = \frac{f_{R2} - f_{R1}}{f_{R1} + f_{R2}},$$

where f_{R2} and f_{R1} are the average responses from the last two rightward saccades, respectively. Memory index (MI) was given by:

$$MI = \frac{f_{memory} - f_{visual}}{f_{memory} + f_{visual}},$$

where f_{memory} and f_{visual} are the average responses from the memory- and visually-guided sequence, respectively.

Occasionally animals would perform a longer sequential saccades containing the required L-L-R-R order, such as L-L-L-R-R. In this case, neural activity and behavioral data for the first L, second L, second to final R and final R were analyzed. Results are presented as mean \pm SEM unless otherwise stated, the significance level is 0.05.

Acknowledgements: This work was supported by grants from National Basic Research Program of China (31871079, 31571121) and Shanghai education committee of scientific research innovation (18JC1412500, 2018SHZDZX05) to A.C, and Shanghai Sailing Program (19YF1413500) to Z.P. We thank Drs. Tony Movshon, Jeff Erlich and Sze Chai Kwok for helpful comments. We are also grateful to Minhu Chen for outstanding computer programming.

Author contributions: X.J. and A.C. designed the experiments. J.J., Z.P. and Q.W. conducted the experiments. J.J., Z.P., X.J. and A.C. analyzed the data and discussed the results. J.J. and Z.P. prepared the figures. J.J., Z.P., X.J. and A.C. wrote the paper.

Competing interests: Authors declare no competing interests.

Data and software availability: Custom code for analyses will be provided upon

reasonable request to the Lead Contact.

References

Andersen, R.A., Essick, G.K., and Siegel, R.M. (1987). Neurons of area 7 activated by both visual stimuli and oculomotor behavior. *EXP BRAIN RES* 67, 316.

Arikan, R., Blake, N.M.J., Erinjeri, J.P., Woolsey, T.A., Giraud, L., and Highstein, S.M. (2002). A method to measure the effective spread of focally injected muscimol into the central nervous system with electrophysiology and light microscopy. *J Neurosci Methods* 118, 51-57.

Basu, D., and Murthy, A. (2020). Parallel programming of saccades in the macaque frontal eye field: are sequential motor plans coactivated? *J NEUROPHYSIOL* 123, 107-119.

Becker, W., and Jürgens, R. (1979). An analysis of the saccadic system by means of double step stimuli. *VISION RES* 19, 967-983.

Berdyeva, T.K., and Olson, C.R. (2010). Rank Signals in Four Areas of Macaque Frontal Cortex During Selection of Actions and Objects in Serial Order. *J NEUROPHYSIOL* 104, 141-159.

Berdyeva, T.K., and Olson, C.R. (2014). Intracortical microstimulation of supplementary eye field impairs ability of monkeys to make serially ordered saccades. *J NEUROPHYSIOL* 111, 1529-1540.

Bhutani, N., Sureshbabu, R., Farooqui, A.A., Behari, M., Goyal, V., and Murthy, A. (2013). Queuing of Concurrent Movement Plans by Basal Ganglia. *Journal of Neuroscience the Official Journal of the Society for Neuroscience* 33, 9985.

Bruce, C.J., Goldberg, M.E., Bushnell, M.C., and Stanton, G.B. (1985). Primate frontal eye fields. II. Physiological and anatomical correlates of electrically evoked eye movements. *J NEUROPHYSIOL* 54, 714-734.

Bruce, C.J., and Goldberg, M.E. (1985). Primate frontal eye fields. I. Single neurons discharging before saccades. *J NEUROPHYSIOL* 53, 603-635.

Chen, A., Gu, Y., Liu, S., DeAngelis, G.C., and Angelaki, D.E. (2016). Evidence for a Causal Contribution of Macaque Vestibular, But Not Intraparietal, Cortex to Heading Perception. *The Journal of Neuroscience* 36, 3789-3798.

Chen, L.L., Goffart, L., and Sparks, D.L. (2001). A simple method for constructing microinjectrodes for reversible inactivation in behaving monkeys. *J NEUROSCI*

METH 107, 81-85.

Chowdhury, S.A., and Deangelis, G.C. (2008). Fine Discrimination Training Alters the Causal Contribution of Macaque Area MT to Depth Perception. NEURON 60, 367-377.

Fujii, N., and Graybiel, A.M. (2003). Representation of action sequence boundaries by macaque prefrontal cortical neurons. SCIENCE 301, 1246-1249.

Geddes, C.E., Li, H., and Jin, X. (2018). Optogenetic Editing Reveals the Hierarchical Organization of Learned Action Sequences. CELL 174, 32-43.

Guitton, D., Buchtel, H.A., and Douglas, R.M. (1985). Frontal lobe lesions in man cause difficulties in suppressing reflexive glances and in generating goal-directed saccades. EXP BRAIN RES 58, 455-472.

Heide, W., Binkofski, F., Seitz, R.J., Posse, S., Nitschke, M.F., Freund, H.J., and Kömpf, D. (2001). Activation of frontoparietal cortices during memorized triple-step sequences of saccadic eye movements: an fMRI study. EUR J NEUROSCI 13, 1177.

Hikosaka, O., Nakahara, H., Rand, M.K., Sakai, K., and Doya, K. (1999). Parallel neural networks for learning sequential procedures. TRENDS NEUROSCI 22, 464-471.

Hikosaka, O., Takikawa, Y., and Kawagoe, R. (2000). Role of the Basal Ganglia in the Control of Purposive Saccadic Eye Movements. PHYSIOL REV 80, 953-978.

Hikosaka, O., and Wurtz, R.H. (1983). Visual and oculomotor functions of monkey substantia nigra pars reticulata. III. Memory-contingent visual and saccade responses. J NEUROPHYSIOL 49, 1268-1284.

Isoda, M., and Tanji, J. (2003). Contrasting Neuronal Activity in the Supplementary and Frontal Eye Fields During Temporal Organization of Multiple Saccades. J NEUROPHYSIOL 90, 3054-3065.

Jin, X., Tecuapetla, F., and Costa, R.M. (2014). Basal ganglia subcircuits distinctively encode the parsing and concatenation of action sequences. NAT NEUROSCI 17, 423-430.

Jin, X., and Costa, R.M. (2015). Shaping action sequences in basal ganglia circuits. CURR OPIN NEUROBIOL 33, 188-196.

Leigh, R.J., and Ramat, S. (1999). Neuropharmacologic aspects of the ocular motor system and the treatment of abnormal eye movements. CURR OPIN NEUROL 12, 21-27.

Lu, X., Matsuzawa, M., and Hikosaka, O. (2002). A Neural Correlate of Oculomotor Sequences in Supplementary Eye Field. NEURON 34, 317-325.

MacAvoy, M.G., and Bruce, C.J. (1989). Oculomotor deficits associated with lesions of the frontal eye field area in macaque monkeys. In Society for Neuroscience Abstracts, p. 1203.

McPeck, R.M., Han, J.H., and Keller, E.L. (2003). Competition between saccade goals in the superior colliculus produces saccade curvature. J NEUROPHYSIOL 89, 2577-2590.

McPeck, R.M., Skavenski, A.A., and Nakayama, K. (2000). Concurrent processing of saccades in visual search. VISION RES 40, 2499-2516.

Middlebrooks, P.G., and Schall, J.D. (2014). Response inhibition during perceptual decision making in humans and macaques. Attention, Perception, & Psychophysics 76, 353-366.

Minken, A.W.H., Opstal, A.J.V., and Gisbergen, J.A.M.V. (1993). Three-dimensional analysis of strongly curved saccades elicited by double-step stimuli. EXP BRAIN RES 93, 521-533.

Pierrot-Deseilligny, C. (1991). Cortical control of memory-guided saccades in man. EXP BRAIN RES 83, 607-617.

Ray, S., Bhutani, N., and Murthy, A. (2012). Mutual inhibition and capacity sharing during parallel preparation of serial eye movements. J VISION 12, 17.

Ray, S., Schall, J.D., and Murthy, A. (2004). Programming of double-step saccade sequences: modulation by cognitive control. VISION RES 44, 2707-2718.

Schall, J.D. (1991). Neuronal activity related to visually guided saccadic eye movements in the supplementary motor area of rhesus monkeys. J NEUROPHYSIOL 66, 530-558.

Schall, J.D. (2004). On the role of frontal eye field in guiding attention and saccades. VISION RES 44, 1467.

Schiller, P.H., Sandell, J.H., and Maunsell, J.H. (1987). The effect of frontal eye field and superior colliculus lesions on saccadic latencies in the rhesus monkey. J NEUROPHYSIOL 57, 1033.

Schiller, P.H., True, S.D., and Conway, J.L. (1980). Deficits in eye movements following frontal eye-field and superior colliculus ablations. J NEUROPHYSIOL 44, 1175.

Shao, M., DeAngelis, G.C., Angelaki, D.E., and Chen, A. (2018). Clustering of heading selectivity and perception-related activity in the ventral intraparietal area. J NEUROPHYSIOL 119, 1113-1126.

Sharika, K.M., Ramakrishnan, A., and Murthy, A. (2008). Control of predictive error correction during a saccadic double-step task. J NEUROPHYSIOL 100, 2757-2770.

Shima, K., Isoda, M., Mushiake, H., and Tanji, J. (2007). Categorization of behavioural sequences in the prefrontal cortex. NATURE 445, 315-318.

Tanji, J. (2001). Sequential organization of multiple movements: Involvement of cortical motor areas. Ann.rev.neurosci 24, 631-651.

Tehovnik, E.J., Sommer, M.A., Chou, I., Slocum, W.M., and Schiller, P.H. (2000). Eye fields in the frontal lobes of primates. Brain Research Reviews 32, 413-448.

Tobler, P.N., and M Ri, R.M. (2002). Role of human frontal and supplementary eye fields in double step saccades. NEUROREPORT 13, 253-255.

Wu, E.X.W., Gilani, S.O., Van, B.J.J.A., Amihai, I., Chua, F.K., and S. C., Y. (2013). Parallel programming of saccades during natural scene viewing: Evidence from eye movement positions. J VISION 13, 17.