

**Title:**

*The relationship between cancer progression and social environment in Drosophila*

**Authors/ Affiliation:**

Erika H. Dawson<sup>+1</sup>, Tiphaine Bailly<sup>+1</sup>, Julie Dos Santos<sup>+1</sup>, Céline Moreno<sup>1</sup>, Maëlle Devilliers<sup>2</sup>, Brigitte Maroni<sup>2</sup>, Cédric Sueur<sup>3,4</sup>, Andreu Casali<sup>5</sup>, Beata Ujvari<sup>6</sup>, Frederic Thomas<sup>+7</sup>, Jacques Montagne<sup>+2</sup>, Frederic Mery<sup>\*+1</sup>

<sup>1</sup>*Evolution, Génomes, Comportement & Ecologie, CNRS, IRD, Université Paris-Sud, Université Paris-Saclay, 91198 Gif-sur-Yvette, France.*

<sup>2</sup>*Institut for Integrative Biology of the Cell (I2BC), CNRS, Université Paris-Sud, CEA, UMR 9198, 91190 Gif-sur-Yvette, France*

<sup>3</sup>*Département Ecologie, Physiologie et Ethologie, Centre National de la Recherche Scientifique, 67037 Strasbourg, France*

<sup>4</sup>*Institut Pluridisciplinaire Hubert Curien, Université de Strasbourg, 67037 Strasbourg, France*

<sup>5</sup>*Institute for Research in Biomedicine (IRB Barcelona), the Barcelona Institute of Science and Technology, Baldiri Reixac, 10, 08028 Barcelona, Spain*

<sup>6</sup>*Centre for Integrative Ecology, School of Life and Environmental Sciences, Deakin University, Waurn Ponds, 3216, Australia*

<sup>7</sup>*CREEC, MIVEGEC, UMR IRD/CNRS/UM 5290, 34394 Montpellier, France*

<sup>+</sup>: equal contribution

**\* Corresponding author:**

Frederic Mery ([frederic.mery@egce.cnrs-gif.fr](mailto:frederic.mery@egce.cnrs-gif.fr))

Evolution, Génomes, Comportement & Ecologie, CNRS, IRD, Université Paris-Sud, Université Paris-Saclay, 91198 Gif-sur-Yvette, France

Phone: (33) 1 69 82 37 32; fax: (33) 1 69 82 37 36

## ***Summary:***

The ecological benefits of sociality in gregarious species are widely acknowledged. However, only limited data is available on how the social environment influences non-communicable disease outcomes. For instance, despite extensive research over the past decades, the role of the social environment on cancer progression remains unclear and controversial. This is mainly because epidemiological studies suffer from the complexity of inter-correlated factors and it is still unknown whether distinct social group composition can also differentially affect tumor growth. Here, we exposed adult *Drosophila* with colorectal-like tumors to different social environments. We show that both cancerous flies bred in complete isolation, or in a group with non-cancerous individuals, exhibit increased tumor progression compared to those bred with other cancerous conspecifics. Based on video-tracking and social interaction analyses, we propose that this dramatic effect may be a consequence of perceived social isolation due to differential social interaction rates. We found that flies can discriminate between individuals at different stages of tumor growth; control flies actively avoid flies with cancer but only at the later stages of tumor development, whereas cancerous flies display strong social interactions with cancerous flies in the early stages of tumor growth. Our study demonstrates the reciprocal links between cancer and social interactions, as well as highlighting how sociality impacts health and fitness in animals and its potential implications for disease ecology and ecosystem functioning

***Keywords:*** Social interaction, group composition, cancer, drosophila, ecology of non-transmissible disease.

## ***Highlights:***

- While it is well established that social life offers many fitness benefits, the influence of social environment on non-transmissible diseases has rarely been considered.
- Here we used a *Drosophila* model to explore the reciprocal links between social environment, tumor development and behavior in individual flies.

- We found that flies kept in isolation developed tumors at a faster rate than those kept in groups and more surprisingly that the identity of group members can significantly affect tumor progression.
- Flies can discriminate between individual states at different stages of tumor growth; control flies actively avoid flies with cancer but only at the later stages of tumor development, whereas cancerous flies display strong social interactions with flies in the early stages of tumor growth
- Our findings bring new perspectives to the importance of social structure on non-transmissible disease progression which may have important consequences for animal health.

## ***Introduction***

In gregarious species sociality not only offers important positive benefits associated with reducing predation risk [1] and increasing foraging efficiency [2], but also provides additional adaptive benefits by reducing overall metabolic demand [3], providing thermal benefits [4], decreasing stress responses [5] and increasing disease avoidance [6]. It is therefore, generally accepted that an individual's social environment affects a large range of behavioral, psychosocial, and physiological pathways. Limited empirical evidence (mostly based on human studies) suggests that extreme social environments such as complete isolation or overcrowding of conspecifics in a group can potentially induce and accelerate pathological disorders. For example, in mammals, social isolation has been associated with faster progression of type 2 diabetes [7], cardiovascular or cerebrovascular disorders [8], and, notably, early and faster mammary cancer development [9, 10]. While, social overcrowding has been found to induce psychiatric and metabolic disorders [11]. Few human studies have attempted to explore the role of social interactions on cancer progression, and the topic remains controversial. Adverse psycho-social factors, including traumatic life events, high levels of depressive symptoms, or low levels of social support, have been related to higher rates of, for example, breast and colon cancers [12, 13]. However, these community based studies or meta-analyses often suffer from the complexity of inter-correlated factors. For example, low sample sizes, high risk behaviors associated with stress (e.g. smoking), and the heterogeneity and retrospective origins of these studies make it difficult to find a conclusive causal relationship between cancer progression and social conditions.

In addition to human studies, laboratory based experiments on gregarious species (e.g. Sprague-Dawley rats) have demonstrated an association between persistent social isolation and inflammatory responses linked to numerous disease processes, including cancer [9, 10, 14]. Despite cancer (both transmissible and non-transmissible ones), being an emerging important factor influencing life history traits [15-18], little is known regarding the reciprocal links between the social environment and the development and progression of this fitness reducing illness. Thus, it is still largely unclear for both animals and humans how specific social group composition can directly affect tumor progression, and vice versa.

*Drosophila* has proven to be a powerful model system to address these issues, since behavioral and physiological processes have been found to be influenced by the degree of social interaction while eliminating all other confounding variables. In *Drosophila*, social isolation leads to a reduced lifespan [19], increased aggression [20-22], reduced need for sleep [23, 24] and a decrease in the fiber number of the mushroom bodies in the integrative nervous center [25].

Here, to explore the reciprocal relationship between social environment and cancer progression, we first exposed adult *Drosophila* females with colorectal-like tumors to various social environments for 21 days and measured tumor growth and social interactions. Subsequently, we tested control and cancerous flies for their social environment preferences predicting that cancer flies should presumably prefer the social environment which limits cancer progression.

## Results

**Biological model:** The flies used contained heat shock-induced MARCM clones [26] induced in 3-day old adult virgin females intestinal progenitor cells. The clones were mutant for both *Drosophila APC* genes, *Apc* and *Apc2*, and expressed the oncogenic form of Ras, Ras<sup>V12</sup> and the GFP marker (Apc-Ras clones) [27]. It has been shown that these compound Apc-Ras clones, but not clones either expressing Ras<sup>V12</sup> or mutated for the *APC* genes, expand as aggressive intestinal tumor-like overgrowths that reproduce many hallmarks of human colorectal cancer [27]. The number of GFP-positive gut cells was monitored with age every 7-days by flow cytometry from flies bearing either Apc-Ras or neutral clones, hereafter referred to as cancerous and control flies, respectively. As expected, a clear increase in the number of GFP-positive tumor cells was observed three weeks after clone induction (Supplementary Fig. 1  $F_{1,33}=8.6$ ;  $P=0.006$ ). Gut dissections confirmed the presence of tumors in the gut (Supplementary Fig. 2). The presence of tumor cells (Apc-Ras clones) had little impact on fly performance and survival over the three weeks of the experimental study [27] (Supplementary Fig. 3)

**Cancer progression and social environment:** To investigate the impact of social environment on tumor progression we exposed adult cancerous females for 21 days, post induction, to various social

environments in 40ml food tubes. Individual virgin cancerous females were either bred in tubes alone (social isolation), in groups composed of seven other cancerous flies (homogeneous groups) or in groups with seven non-cancerous control females (heterogeneous groups). Groups of eight control flies were used as a reference (homogeneous group). Tumor growth was significantly affected by the breeding social environment (Wald  $\chi^2=6.7$ ,  $P=0.031$ ) After 21 days we observed that tumor growth was dramatically higher in cancerous flies kept in isolation than in cancerous flies kept in homogeneous groups (Fig. 1). More surprisingly, we also observed that cancerous individual flies kept within a group of control flies showed an increased number of tumor cells compared to cancerous flies grouped together (Fig. 1).

**Social interactions:** we then analyzed how social interactions were affected by tumor progression and group composition. Using a video tracking setup, we followed the locomotion and interactions of groups of flies (3 weeks post induction) placed in an arena for 1 hour. For social interaction measures we used homogenous groups of eight control or eight cancerous flies, and a heterogeneous group consisting of seven control and one cancerous fly which were kept together for 21 days post induction. Social interaction analyses confirmed that control and cancerous flies had similar locomotor activity independent of their social environment (Fig. 2A; log (trail length): social environment:  $F_{1,84} = 2.64$ ,  $P = 0.1$ ; fly state:  $F_{1,84} = 0.13$ ,  $P = 0.7$ ; fly state x social environment:  $F_{1,84} = 3.8$ ,  $P = 0.061$ ). However, the length of interaction a fly had with another strongly diverged according to group composition. In homogeneous groups, cancerous flies had longer interactions compared to homogenous control groups (Fig. 2B;  $F_{1,34} = 31.10$ ;  $P < 10^{-3}$ ). Control flies showed the same contact duration whether in homogeneous or heterogeneous groups (Fig. 2B;  $F_{1,42} = 1.1$ ;  $P = 0.3$ ), whereas cancerous flies showed a strong decrease in contact duration in the presence of control flies (Fig. 2B  $F_{1,42} = 25.3$ ;  $P < 10^{-3}$ ). Flies in the control group had the same number of contacts when in the homogenous and heterogeneous groups, while cancerous flies, once again, showed a decrease in the number of contacts when placed with control flies (heterogeneous group) compared to when in a group with other cancerous flies (Fig. 2C control flies:  $F_{1,42} = 2.3$ ;  $P = 0.13$ ; cancerous flies:  $F_{1,42} = 14.08$ ;  $P < 10^{-3}$ ). We thus concluded that, for a cancerous fly, the type of social group composition strongly affects the level of social interactions. However, our

measure of social contact was constrained by the small size of the arena and therefore did not allow us to disentangle the direction of the social contact i.e which fly showed avoidance and which fly showed attraction.

**Cancer progression and social environment choice:** Based on the results described above we tested whether cancerous and/or control flies would show variation in social environment choice depending on the level of tumor progression. Using a similar protocol to Saltz [28], we assessed social preference by putting two small mesh cages, each containing 8 “stimulus flies” (cancerous or control) in a plastic, transparent box. The small mesh cages were placed on top of a small petri-dish containing standard food. We introduced a “target fly” (cancerous or control) in the enclosed box and recorded their position over 7h i.e. whether the fly was found on one of the two mesh cages. Target and stimulus flies were tested at different ages post heat-shock induction.

When target flies were given the choice between a cancerous or a control stimulus group of the same age, cancerous and control flies tended to show difference choice behaviors (Fig 3; target fly: Wald  $\chi^2_1=4.1$ ,  $P=0.04$ ; age: Wald  $\chi^2_1=2.8$ ,  $P=0.09$ ; age x target fly: Wald  $\chi^2_1=2.7$ ,  $P=0.1$ ). Cancerous flies appeared, on average, more attracted than control flies to other cancerous individuals. This was especially pronounced when flies were young i.e. at the very beginning of the tumor development. However, at later stages of tumor growth, cancerous flies showed stronger preference towards control individuals (age: Wald  $\chi^2_1=21.2$ ,  $P<10^{-3}$ ). On the other hand, control flies showed no preference for either group until the third week of cancer growth, where a strong preference for other control flies was observed (Fig 3).

To understand whether these preferences, in a dual choice, were due to avoidance or attraction, young (7 days post heat shock) target flies were given a choice between a stimulus group in a mesh cage (8 flies) and an empty mesh cage using a similar experimental design. Cancerous flies showed, on average, attraction for the social group, independent, of the age or the state of the stimulus flies (Fig 5; stimulus: Wald  $\chi^2_1=0.06$ ,  $P=0.79$ ; stimulus age: Wald  $\chi^2_1=1.4$ ,  $P=0.23$ ; stimulus x stimulus age: Wald  $\chi^2_1=0.6$ ,  $P=0.44$ ). While control flies showed, on average, no clear attraction for the social group, they clearly

avoided 3-week-old cancer flies (Fig 4; stimulus: Wald  $\chi^2_1=2.6$ ,  $P=0.1$ ; stimulus age: Wald  $\chi^2_1=3.37$ ,  $P=0.066$ ; stimulus x stimulus age: Wald  $\chi^2_1=6.61$ ,  $P=0.01$ ).

## ***Discussion***

Here, we show that social environment can significantly shape the development of intestinal-like cancer in *Drosophila*. Consistent with previous studies on mammals [10, 29], cancerous flies bred in isolation exhibit faster tumor progression than flies kept in groups of other cancerous individuals. However, more importantly is the finding that variation in group composition also leads to increased proliferation of tumor cells, thus highlighting how subtle variations in social structure may have dramatic effects on the progression of non-transmissible diseases.

Despite the opportunity to interact with others, individual cancerous flies, kept in groups with control flies, developed tumors at similar rates to when cancerous flies were bred in isolation. Social interaction analyses revealed that despite similar locomotor activities, cancerous flies interact considerably less with control flies compared to when they are housed with other cancerous conspecifics. This reduction of social contact may potentially be perceived as a form of social isolation by cancerous flies, which could result in increased tumor growth, analogous to when flies are kept in true isolation. In humans, it has been proposed that the subjective perceived feeling of social isolation may impact psychological and physiological traits as much as real social isolation [30]. Furthermore, the social environment choice experiment suggests that control flies may actively recognize and avoid cancerous ones especially when the tumor growth is significant. Potentially, this may simply reflect common infection avoidance [31, 32], a behavior that has also recently been observed in *Drosophila* [33]. Even if not contagious, cancerous flies may show particular behaviors, or produce chemical cues, which are generally associated with being sick.

These findings offer new perspectives on the reciprocal relationship between disease and social behavior. While we observe that social structure has profound effects on disease progression, our study also suggest that disease might play a fundamental role in influencing group composition. We found that cancer growth developed at a slower rate when flies were with other cancerous flies. Moreover, we



observed that cancerous flies exhibit strong social attraction towards each other, especially at the beginning of tumor development. This raises questions on the very early impact of internal oncogenic process on individual behavior and natural selection pressures on this process [34]. For example, such attraction could be the result of an adaptive process, which reduces cancer progression. Further studies would be necessary to determine the exact proximate factors responsible for this effect, as well as the extent to which generalizations can be made across other cancer types and animal species.

Our findings highlight the importance of social structure on disease progression, beyond the context of transmission. This is the first time that a direct link between social environment, specifically group composition, and cancer progression has been shown, while removing all other confounding psychosociological parameters that are frequently encountered in human studies. More generally, this study brings new light to how sociality impacts health and fitness in animals and its potential implication in both conservation and human disease therapy. Moreover, we provide essential data to the emerging topic of evolutionary ecology of cancer, and demonstrate the importance of neoplasia as a fitness limiting factor that influences life history adaptations and strategies.

### ***Author Contributions:***

E.H.D., T.B., C.M., F.T., J.M and F.M designed the experiments. E.H.D., T.B., J.D.S., C.M., M.S. and J.M. performed the experiments. C.S, J.M and F.M analyzed the data. E.H.D., J.M., F.T., A.C., C.S., B.U. and F.M. wrote the manuscript.

### ***Acknowledgements***

This work was supported by the ANR (Blanc project EVOCAN to FT and project DROSONET to FM and CS), the CNRS (INEE and INSB), *Fondation ARC* (1555286 to JM and FM), The French league against Cancer (M27218 to JM), IDEEV program (to FM), by an International Associated Laboratory Project France/Australia , by the French-Australian Science Innovation Collaboration Program Early Career Fellowship (BU), by André Hoffmann (Fondation MAVA), Fyssen Foundation (to FM and EHD) and the French Government (fellowship 2015-155 to MD). We thank F. Bastin, J.C. Sandoz and A. Couto for their help with confocal imaging.

## References

1. Beauchamp, G. (2016). Function and structure of vigilance in a gregarious species exposed to threats from predators and conspecifics. *Anim. Behav.* **116**, 195-201.
2. Dalerum, F., Lange, H., Skarpe, C., Rooke, T., Inga, B., and Bateman, P.W. (2008). Foraging competition, vigilance and group size in two species of gregarious antelope. *S. Afr. J. Wildl. Res.* **38**, 138-145.
3. Nadler, L.E., Killen, S.S., McClure, E.C., Munday, P.L., and McCormick, M.I. (2016). Shoaling reduces metabolic rate in a gregarious coral reef fish species. *J. Exp. Biol.* **219**, 2802-2805.
4. McFarland, R., Fuller, A., Hetem, R.S., Mitchell, D., Maloney, S.K., Henzi, S.P., and Barrett, L. (2015). Social integration confers thermal benefits in a gregarious primate. *J. Anim. Ecol.* **84**, 871-878.
5. Apfelbeck, B., and Raess, M. (2008). Behavioural and hormonal effects of social isolation and neophobia in a gregarious bird species, the European starling (*Sturnus vulgaris*). *Horm. Behav.* **54**, 435-441.
6. Behringer, D.C., Butler, M.J., and Shields, J.D. (2006). Ecology: avoidance of disease by social lobsters. *Nature* **441**, 421-421.
7. Nonogaki, K., Nozue, K., and Oka, Y. (2007). Social isolation affects the development of obesity and type 2 diabetes in mice. *Endocrinology* **148**, 4658-4666.
8. Venna, V., Xu, Y., Doran, S., Patrizz, A., and McCullough, L. (2014). Social interaction plays a critical role in neurogenesis and recovery after stroke. *Translational psychiatry* **4**, e351.
9. McClintock, M.K., Conzen, S.D., Gehlert, S., Masi, C., and Olopade, F. (2005). Mammary cancer and social interactions: identifying multiple environments that regulate gene expression throughout the life span. *The Journals of Gerontology Series B: Psychological Sciences and Social Sciences* **60**, 32-41.
10. Hermes, G.L., Delgado, B., Tretiakova, M., Cavigelli, S.A., Krausz, T., Conzen, S.D., and McClintock, M.K. (2009). Social isolation dysregulates endocrine and behavioral stress while increasing malignant burden of spontaneous mammary tumors. *Proceedings of the National Academy of Sciences* **106**, 22393-22398.
11. Lin, E.-J.D., Sun, M., Choi, E.Y., Magee, D., Stets, C.W., and During, M.J. (2015). Social overcrowding as a chronic stress model that increases adiposity in mice. *Psychoneuroendocrinology* **51**, 318-330.
12. Chida, Y., Hamer, M., Wardle, J., and Steptoe, A. (2008). Do stress-related psychosocial factors contribute to cancer incidence and survival? *Nat. Clin. Pract. Oncol.* **5**, 466-475.
13. Lin, Y., Wang, C., Zhong, Y., Huang, X., Peng, L., Shan, G., Wang, K., and Sun, Q. (2013). Striking life events associated with primary breast cancer susceptibility in women: a meta-analysis study. *J. Exp. Clin. Cancer Res.* **32**, 1.
14. Hermes, G.L., Rosenthal, L., Montag, A., and McClintock, M.K. (2006). Social isolation and the inflammatory response: sex differences in the enduring effects of a prior stressor. *American Journal of Physiology-Regulatory, Integrative and Comparative Physiology* **290**, R273-R282.
15. Vittecoq, M., Ducasse, H., Arnal, A., Møller, A.P., Ujvari, B., Jacqueline, C.B., Tissot, T., Missé, D., Bernex, F., Pirot, N., et al. (2015). Animal behaviour and cancer. *Anim. Behav.* **101**, 19-26.
16. Ujvari, B., Gatenby, R.A., and Thomas, F. (2016). The evolutionary ecology of transmissible cancers. *Infect., Genet. Evol.* **39**, 293-303.
17. Ujvari, B., Beckmann, C., Biro, P.A., Arnal, A., Tasiemski, A., Massol, F., Salzet, M., Mery, F., Boidin-Wichlacz, C., and Missé, D. (2016). Cancer and life-history traits: lessons from host-parasite interactions. *Parasitology* **143**, 533-541.

18. Arnal, A., Jacqueline, C., Ujvari, B., Leger, L., Moreno, C., Faugere, D., Tasiemski, A., Boidin-Wichlacz, C., Misse, D., and Renaud, F. (2016). Cancer brings forward oviposition in the fly *Drosophila melanogaster*. *Ecology and Evolution*.
19. Ruan, H., and Wu, C.F. (2008). Social interaction-mediated lifespan extension of *Drosophila* Cu/Zn superoxide dismutase mutants. *Proceedings of the National Academy of Sciences* *105*, 7506-7510.
20. Hoffmann, A.A. (1987). A laboratory study of male territoriality in the sibling species *Drosophila melanogaster* and *D. simulans*. *Anim. Behav.* *35*, 807-818.
21. Hoffmann, A.A. (1990). The influence of age and experience with conspecifics on territorial behavior in *Drosophila melanogaster*. *J. Insect Behav.* *3*, 1-12.
22. Zhou, C., Rao, Y., and Rao, Y. (2008). A subset of octopaminergic neurons are important for *Drosophila* aggression. *Nat. Neurosci.* *11*, 1059-1067.
23. Ganguly-Fitzgerald, I., Donlea, J., and Shaw, P.J. (2006). Waking experience affects sleep need in *Drosophila*. *Science* *313*, 1775-1781.
24. Donlea, J.M., Ramanan, N., and Shaw, P.J. (2009). Use-dependent plasticity in clock neurons regulates sleep need in *Drosophila*. *Science* *324*, 105-108.
25. Technau, G.M., and Technau, G.M. (2007). Fiber number in the mushroom bodies of adult *Drosophila melanogaster* depends on age, sex and experience. *J. Neurogenet.* *21*, 183-196.
26. Lee, T., and Luo, L. (1999). Mosaic analysis with a repressible cell marker for studies of gene function in neuronal morphogenesis. *Neuron* *22*, 451-461.
27. Martorell, Ò., Merlos-Suárez, A., Campbell, K., Barriga, F.M., Christov, C.P., Miguel-Aliaga, I., Batlle, E., Casanova, J., and Casali, A. (2014). Conserved mechanisms of tumorigenesis in the *Drosophila* adult midgut. *PLoS One* *9*, e88413.
28. Saltz, J.B. (2011). Natural genetic variation in social environment choice: context-dependent gene–environment correlation in *Drosophila melanogaster*. *Evolution* *65*, 2325-2334.
29. Moreno-Smith, M., Lutgendorf, S.K., and Sood, A.K. (2010). Impact of stress on cancer metastasis. *Future oncology* *6*, 1863-1881.
30. Cacioppo, J.T., and Cacioppo, S. (2014). Social relationships and health: The toxic effects of perceived social isolation. *Social and personality psychology compass* *8*, 58-72.
31. Kiesecker, J.M., Skelly, D.K., Beard, K.H., and Preisser, E. (1999). Behavioral reduction of infection risk. *Proceedings of the National Academy of Sciences* *96*, 9165-9168.
32. Loehle, C. (1995). Social barriers to pathogen transmission in wild animal populations. *Ecology* *76*, 326-335.
33. Vale, P.F., and Jardine, M.D. (2017). Infection avoidance behavior: Viral exposure reduces the motivation to forage in female *Drosophila melanogaster*. *Fly* *11*, 3-9.
34. Tissot, T., Arnal, A., Jacqueline, C., Poulin, R., Lefèvre, T., Mery, F., Renaud, F., Roche, B., Massol, F., and Salzet, M. (2016). Host manipulation by cancer cells: expectations, facts, and therapeutic implications. *Bioessays*.
35. Branson, K., Robie, A.A., Bender, J., Perona, P., and Dickinson, M.H. (2009). High-throughput ethomics in large groups of *Drosophila*. *Nat Meth* *6*, 451-457.
36. Gargano, J.W., Martin, I., Bhandari, P., and Grotewiel, M.S. (2005). Rapid iterative negative geotaxis (RING): a new method for assessing age-related locomotor decline in *Drosophila*. *Exp. Gerontol.* *40*, 386-395.
37. Tinkerhess, M.J., Ginzberg, S., Piazza, N., and Wessells, R.J. (2012). Endurance training protocol and longitudinal performance assays for *Drosophila melanogaster*. *JoVE (Journal of Visualized Experiments)*, e3786-e3786.

### **Figure Legend:**

**Figure 1:** *Gut tumor progression as a function of social environment.* FACS analysis of GFP-positive cells in guts dissected from 21 days old control or cancerous females as a function of social environment. Error bars: standard error of the mean. Letters are Tukey's post hoc classification. N=15 measures for each treatment.

**Figure 2:** *Social interactions for 21 days old females in homogeneous (8 cancerous flies or 8 control flies) or heterogeneous groups (1 cancerous and 7 control flies).* 2A: total foraging trail. 2B: averaged cumulated social contact duration one individual has with another individual of the group. 2C: averaged number of contacts one individual has with another individual of the group. Error bars: standard error of the mean. NS:  $P > 0.05$ ; \*\*\*:  $P < 10^{-3}$

**Figure 3:** *Dual choice experiment:* proportion of target flies choosing to land on the mesh cage containing cancerous flies as a function of age. N=12-21 per treatment. Stars indicate deviation from random choice: ns:  $P > 0.05$ ; \*:  $P < 0.05$ , \*\*:  $P < 0.01$ ; Error bars: standard error of the mean

**Figure 4:** *Attraction vs aversion experiment.* Proportion of flies choosing to land on the mesh cage containing stimulus flies (4A: cancerous ones; 4B: control ones) as a function of age of the stimulus flies. Stars indicate deviation from random choice ns:  $P > 0.05$ ; \*:  $P < 0.05$ ; \*\*:  $P < 0.01$ ;

### **Methods:**

**Drosophila stocks:** *yw,HS-flp;esg-gal4,UAS-GFP;FRT82B,Tub-Gal80*, *yw,HS-flp;UAS-Ras<sup>V12</sup>;FRT82B,Apc2<sup>N175K</sup>,Apc<sup>Q8</sup>* and *yw,HS-flp;;FRT82B* [27] flies were balanced over co-segregating SM5-TM6B balancers. MARCM clones were generated by a 1 hr heat shock at 37°C of 3 days old females and were marked by the progenitor cell marker *escargot-gal4* (*esg-gal4*) Gal4 line driving the expression of *UAS-GFP*. In all experiments cancerous flies were *HS-flp;esg-gal4,UAS-GFP/UAS-Ras<sup>V12</sup>;FRT82B,Tub-Gal80/FRT82B,Apc2<sup>N175K</sup>,Apc<sup>Q8</sup>*; whereas controls were *HS-flp;esg-gal4,UAS-*

*GFP;FRT82B,Tub-Gal80/FRT82B*. Although several attempts were made to use non-induced (no heat shock) *HS-flp;esg-gal4,UAS-GFP/UAS-Ras<sup>V12</sup>;FRT82B,Tub-Gal80/FRT82B,Apc2<sup>N175K</sup>,Apc<sup>Q8</sup>* as controls, due to unpredictable cancer penetrance (unpredictable percentage of flies developing cancer without heat shock) the lineage was declared not suitable as reliable control.

**Flow cytometry:** Prior to the quantification of GFP-positive cells as an estimate of tumor progression, flies were starved overnight, provided only with water. The entire midgut and the Malpighian tubules, that also exhibit tumor-like structures, were dissected in PBS (Phosphate buffer saline). Samples of 5 guts were digested by collagenase (125µg in 60µl PBS) (Sigma-Aldrich) for 2h at 27°C with gentle agitation. Samples were then complemented with 10 µl Trypsin 10X (Sigma-Aldrich) and nuclei were stained by Hoechst 33342 (0.5µg/ml) for at least 1hr. Samples were filtered and analyzed on a Partec PAS III (Figure S1).

**Social breeding:** flies were sexed at emergence and control or cancerous females were kept in groups until the third day post emergence. Control and cancerous virgin females were heat shocked at 37°C during 1h. Flies were then introduced into new 40ml food tubes according to their treatment. Control and cancerous flies were partially wing-clipped on the right or left wing to distinguish their genotype. Flies were then kept at 25°C on standard food (renewed every 3 days) until day 21 post induction. Note that the size of the breeding tubes was small (40ml) enough to limit any effect of complete social isolation. Tumour size was estimated with flow cytometry. Data were analyzed with generalized linear model (binomial distribution, Pearson correction for over-dispersion) on the number of tumor cells vs the total number of cells counted.

**Social interactions:** Each group (composed of flies taken from different food tubes i.e. had never previously interacted together) was introduced into a semi opaque white polyoxymethylene (Delrin) arena (diameter 100mm; height 5mm) covered with a transparent Plexiglas for 1h. Our experimental design allowed us to simultaneously track 4 groups of 8 flies over the 4h. The tracking apparatus consisted of four synchronized firewire cameras (Guppy pro, Allied vision technologies), each filming one interaction arena that was backlit by a 150X150 mm IR backlight (R&D vision). We used Vision software to analyze spatial data (open-source C-trax 0.3.7 [35] that allowed us to collect 10

positions per second for each fly over 1h video experiments. Tracking corrections were made post C-trax analysis with fixerrors matlab toolbox (Ctrax-allmatlab version 0.2.11) using Matlab software 7.11.0 to suppress swaps between individuals. We then calculated, for each fly, the total length of the path, the distance to other flies, the number of contacts with other flies (a contact was considered when the distance between the centers of two individuals was smaller than, or equal to, one mean body length of the individuals for 1s or more) and the duration of each contact.

***Social environment choice:*** flies were sexed at emergence and control or cancerous females were kept in groups until the third day post emergence. Control and cancerous virgin females were heat shocked at 37°C during 1h and kept in group until the day of the experiment. The experimental setup consisted of a 17x12x5cm plastic cage in which 2 small 2x2x2cm mesh cages were introduced and each placed on a 3cm diameter petri dish containing standard food. Groups of eight flies were introduced in the mesh cages. In the dual choice experiment one mesh cages contained control flies whereas the other one contained cancerous flies. In the attraction vs avoidance experiment only one of the two cages contained stimulus flies. A target fly (control or cancerous) was introduced in the cage 15h before starting the experiment. The position of the fly was then visually recorded every 30min between 10am and 5pm. We only considered the cases where the fly was on a mesh cage or the associated petri dish. Data (number of choices over the 7h) were then analyzed with a general linear model and a binary logistic regression. For the dual choice experiment, target and stimulus flies were of the same age (7, 14 or 21 days post induction) whereas for the attraction vs aversion experiment the target fly was always 7 days old post induction and the stimulus flies were 7 or 21 days post induction.

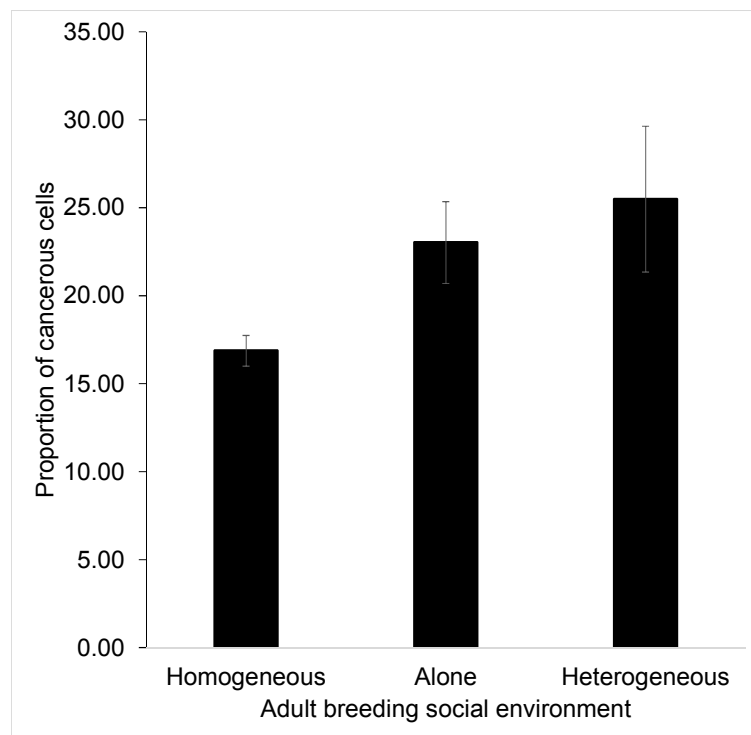


Figure 1

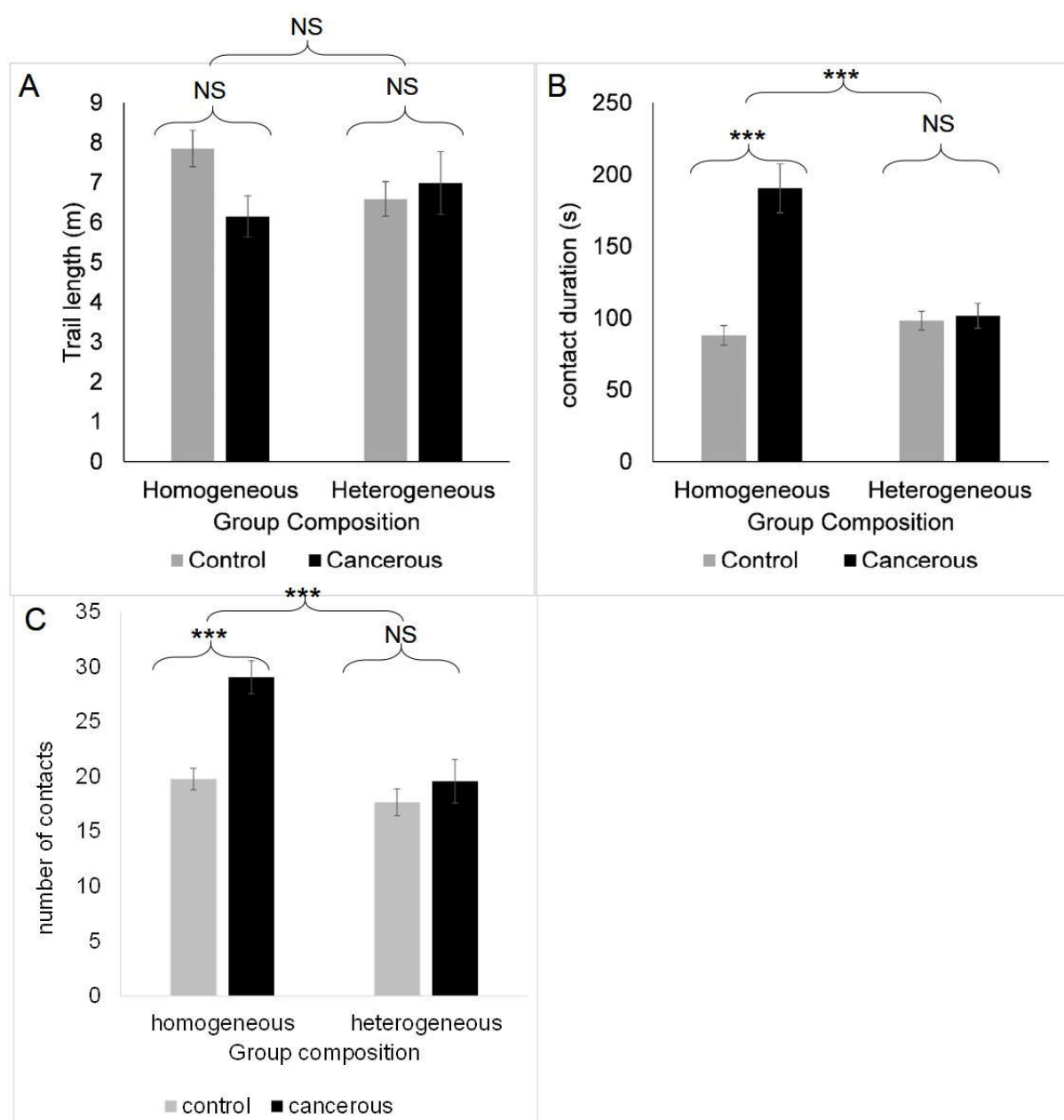


Figure 2



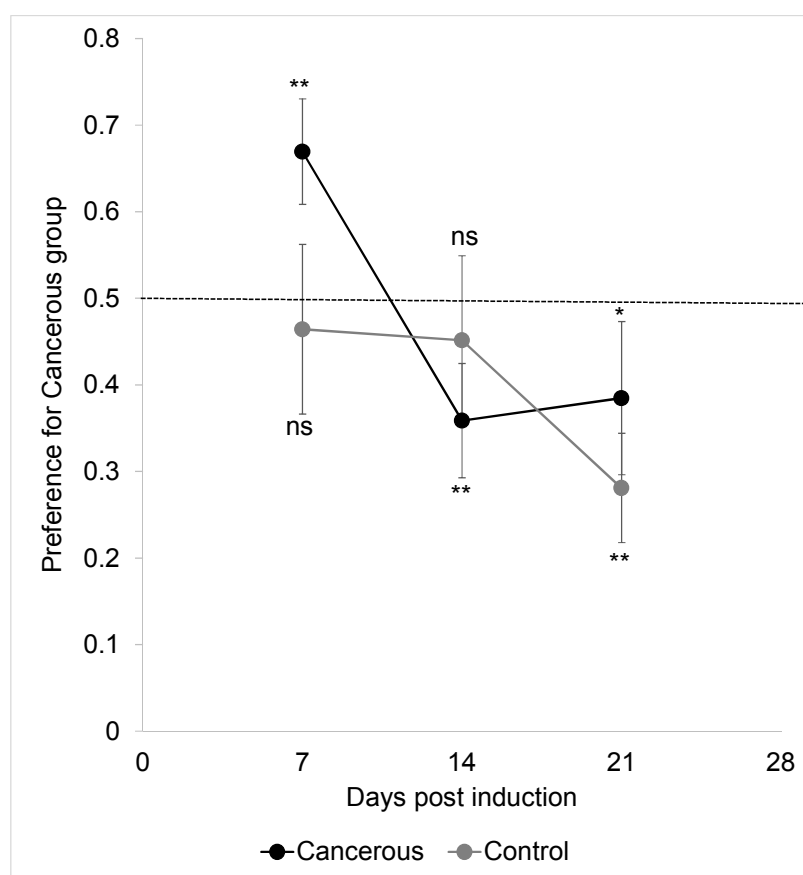


Figure 3

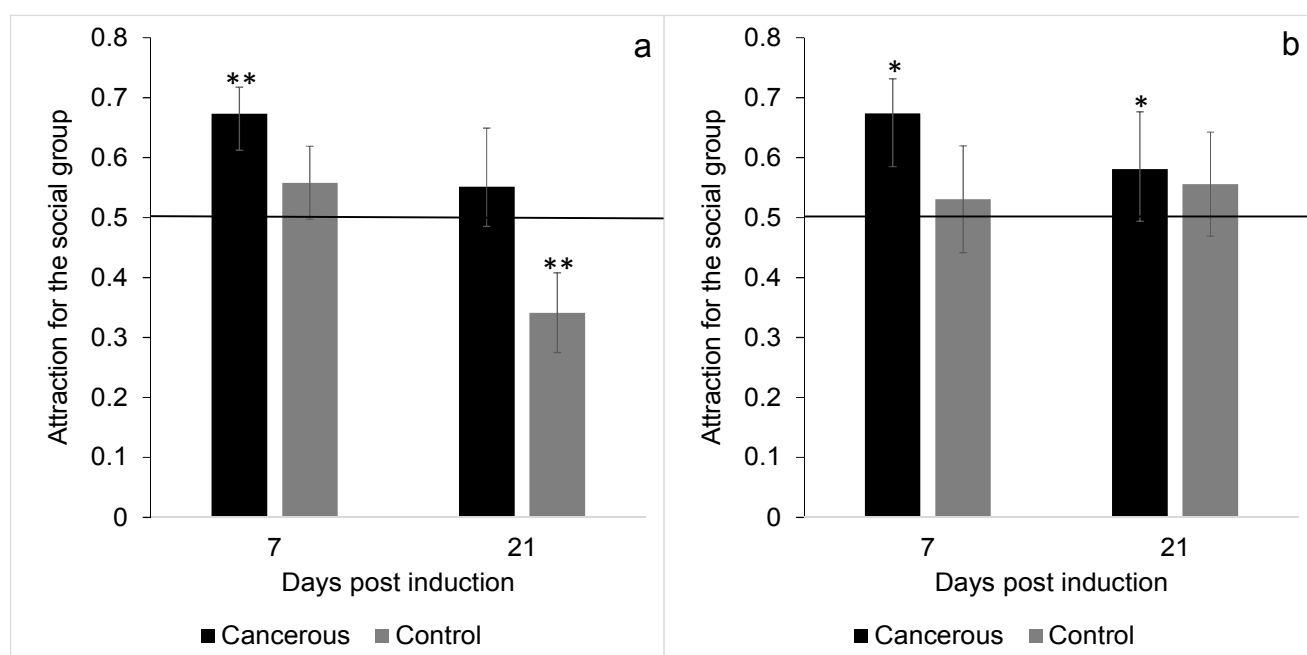


Figure 4

## SUPPLEMENTARY INFORMATION

### *The relationship between cancer progression and social environment in Drosophila*

Erika H. Dawson<sup>+1</sup>, Tiphaine Bailly<sup>+1</sup>, Julie Dos Santos<sup>1</sup>, Céline Moreno<sup>1</sup>, Maelle Devilliers<sup>2</sup>, Cédric Sueur<sup>3,4</sup>, Andreu Casali<sup>5</sup>, Beata Ujvari<sup>6</sup>, Frédéric Thomas<sup>+7</sup>, Jacques Montagne<sup>+2</sup>, Frederic Mery<sup>\*+1</sup>

<sup>1</sup>*Evolution, Génomes, Comportement & Ecologie, CNRS, IRD, Univ.Paris-Sud, Université Paris-Saclay, 91198 Gif-sur-Yvette, France.*

<sup>2</sup>*Institut for Integrative Biology of the Cell (I2BC), CNRS, Université Paris-Sud, CEA, UMR 9198, 91190 Gif-sur-Yvette, France*

<sup>3</sup>*Département Ecologie, Physiologie et Ethologie, Centre National de la Recherche Scientifique, 67037 Strasbourg, France*

<sup>4</sup>*Institut Pluridisciplinaire Hubert Curien, Université de Strasbourg, 67037 Strasbourg, France*

<sup>5</sup>*Institute for Research in Biomedicine (IRB Barcelona), the Barcelona Institute of Science and Technology, Baldori Reixac, 10, 08028 Barcelona, Spain*

<sup>6</sup>*Centre for Integrative Ecology, School of Life and Environmental Sciences, Deakin University, Waurn Ponds, 3216, Australia*

<sup>7</sup>*CREEC, MIVEGEC, UMR IRD/CNRS/UM 5290, 34394 Montpellier, France*

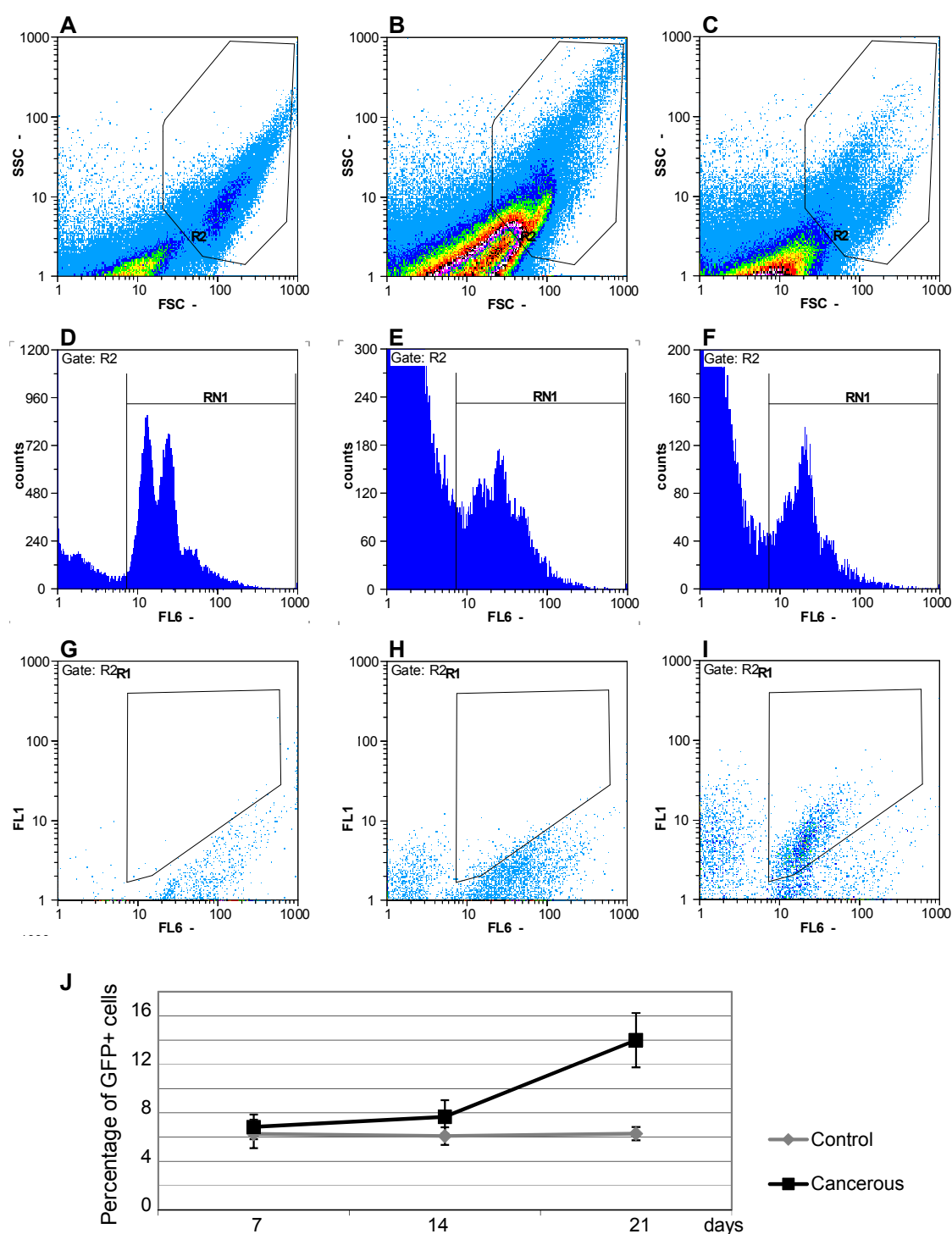
<sup>+</sup>: equal contribution

**\* Corresponding author:**

Frederic Mery ([frederic.mery@egce.cnrs-gif.fr](mailto:frederic.mery@egce.cnrs-gif.fr))

Evolution, Génomes, Comportement & Ecologie, CNRS, IRD, Univ.Paris-Sud, Université Paris-Saclay, 91198 Gif-sur-Yvette, France

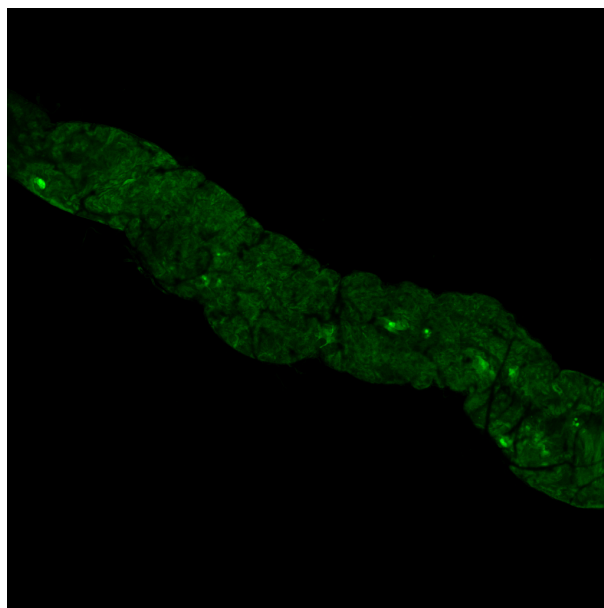
Phone: (33) 1 69 82 37 32; fax: (33) 1 69 82 37 36)



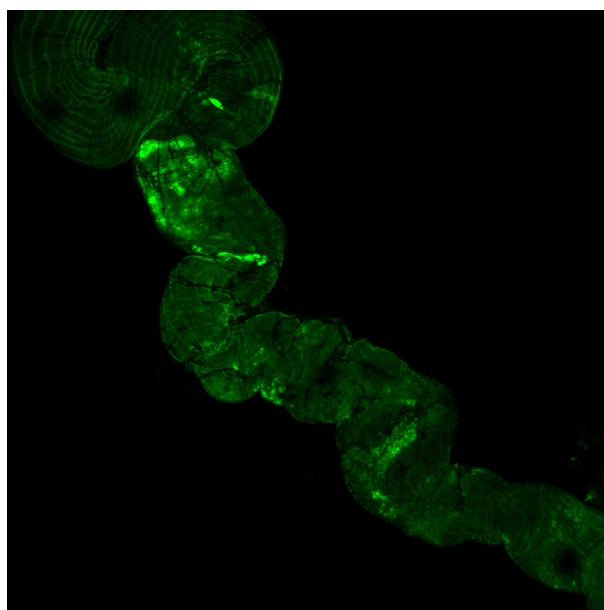
**Figure S1**

Figure S1: *FACS analysis of intestinal cells.* (A-C) SSC versus FSC Dotplots to gate (R2) the cells of interest from dissected imaginal discs (A) or guts of  $w^{1118}$  (B) and cancerous (C) flies. (D-F) Selection

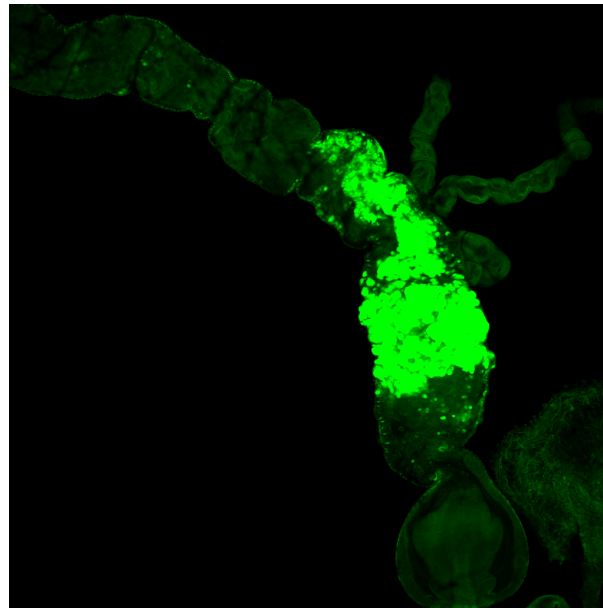
of the *Drosophila* cells within the R2 gate, with respect to their DNA content (RN1); imaginal disc cells allow to identify diploid G1 and G2 cells (2 major pics in D); the intestinal cells of *w<sup>1118</sup>* (E) and cancerous (F) flies, which undergo DNA endoreplication contain at least the DNA content of G1 imaginal disc cells. (G-I) FL6 (DNA) versus FL1 (GFP) Dotplots to select the GFP-positive cells from gut of cancerous flies (R1 in I), whereas the R1 gate is empty when analyzing imaginal disc cells (G) and gut cells (H) of *w<sup>1118</sup>* flies. (J) FACS quantification of GFP-positive cells in cancerous (black line) and control (grey line) guts dissected from adult females at 7, 14 and 21 days past heat shock-induced clonal recombination. Genotype of cancerous and control flies are *HS-flp;esg-gal4,UAS-GFP/UAS-Ras<sup>V12</sup>;FRT82B,Tub-Gal80/FRT82B,Apc2<sup>N175K</sup>,Apc<sup>Q8</sup>* and *HS-flp;esg-gal4,UAS-GFP;FRT82B,Tub-Gal80/FRT82B*, respectively. Error bars: standard error of the mean. N=8 measures for each treatment.



(A) 7 days post induction



(B) 14 days post induction



(C) 21 days post induction

Figure S2: *Progression of tumor growth in the Midgut.* (A-C) APC-Ras clones in the midgut labeled by GFP (green) at 7 days (A), 14 days (B) and 21 days (C) after clonal-induced recombination. Note that 7-day old clones mostly appear as isolated cells, whereas 14-day old clones appear as groups of few cells; 21-day old clones invade large portions of the midgut. Guts from overnight starved flies were dissected in PBS and fixed with 3,7% formaldehyde in PBT (PBS, 0,1% Tween 20) for 20 mn at room temperature; guts were then extensively washed and mounted in DABCO (sigma). Image acquisitions were obtained using laser scanning confocal microscope (LSM700; Carl Zeiss, Jena, Germany) and a solid-state 488-nm laser for exciting GFP. Image were acquired at a resolution of 1024x1024 pixels using a water immersion objective (x10 achroplan 0.3 NA). .

**Fly physical performance:** We compared physical and behavioral performances between control and cancerous flies at different ages by exposing them to a ‘negative geotaxis’ behavior test. This involved repeatedly tapping a tube of flies, which causes them to fall, and then measuring the number of individuals that show an escape response (ascending the walls of the tube) over time. When repeatedly performed, this escape response tends to diminish due to exhaustion. This test has been extensively used as a robust proxy to estimate physical and behavioral performance and locomotor. We followed a protocol based on the one initially developed by JW Gargano and co-workers [36] and modified by MJ Tinkerhess [37]. Groups of 10 cancerous or control females (7, 14 or 21 days post induction) were introduced into 40ml tubes and placed vertically on a platform which automatically taps the tubes every 4 seconds causing all flies to fall to the bottom of the tube. Every 15 min we visually recorded the number of flies in each tube showing negative geotaxis (climbing at least 2/3 of the tube between two taps). The experiment lasted 2 hours. The data were analyzed with repeated measures ANOVA including fly state (cancerous or control) and age as factors. The presence of tumor cells (Apc-Ras clones) has little impact on fly performance and survival over the three weeks of the experimental study. Cancerous and control flies subjected to repeated taps over two hours showed a progressive decline in negative geotaxis response (Repeated measure ANOVA: time:  $F_{1,50} = 319,9$   $P < 10^{-3}$ ; Fig. S3) which was stronger as flies got older (time x age:  $F_{1,50} = 8,8$ ;  $P = 0.004$ ). However, no difference between cancerous or control flies could be observed at any age ( $P > 0.5$  for each age tested i.e. 7,14 or 21 days post induction) suggesting that despite the general observation of age related impairments, Apc-Ras-induced tumors do not affect physical performance and locomotion 3 weeks after induction.



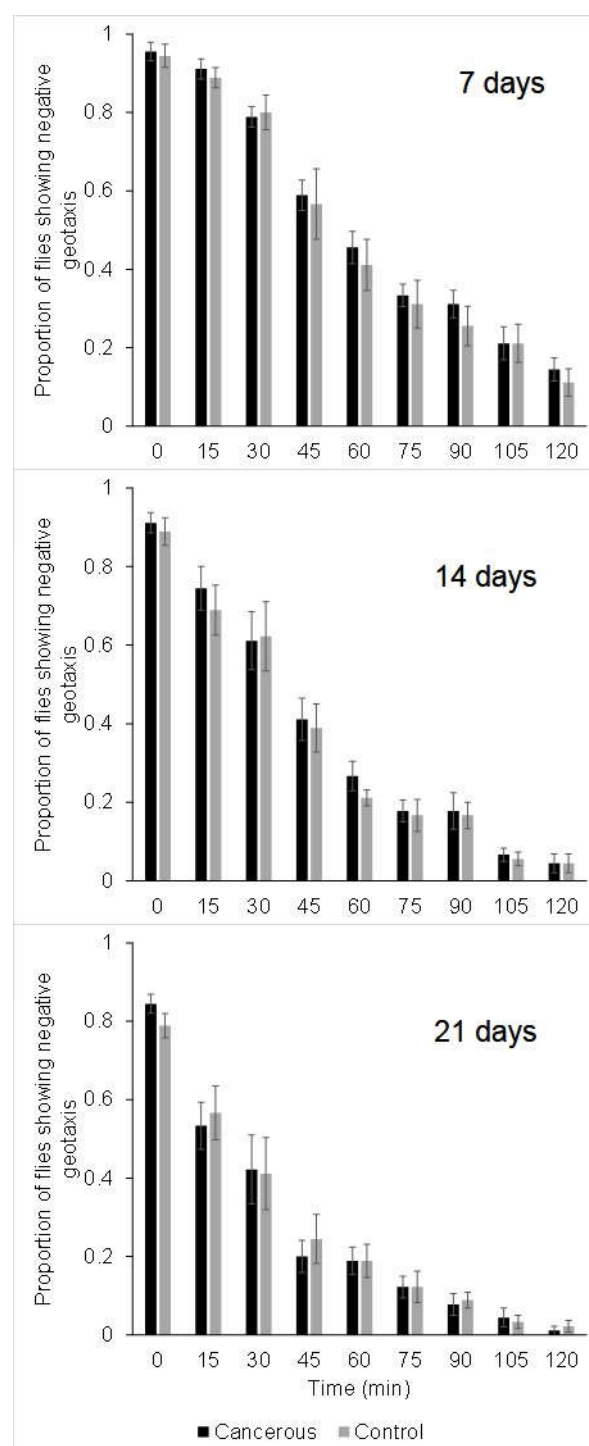


Figure S3: Repeated 'negative geotaxis' behaviour test performed at different ages for cancerous and control flies. Proportion of flies ascending the walls of the tube after it has been repeatedly tapped. Measures were taken every 15min over 2h at different ages (7, 14 or 21 days post induction). Error bars: standard error of the mean. N=9 measures for each treatment