

Stochastic model of contact inhibition and the proliferation of melanoma *in situ*

Mauro Cesar Cafundó de Morais^{a,b}, Izabella Stuhl^{c,d}, Alan Utsuni Sabino^b, Willian Wagner Lautenschlager^b, Alexandre Sarmiento Queiroga^a, Tharcisio Citrangulo Tortelli Jr.^a, Roger Chammas^a, Yuri Suhov^{e,f}, and Alexandre Ferreira Ramos^{a,b,*}

^aDepartment of Radiology and Oncology, Faculty of Medicine, University of Sao Paulo, Sao Paulo, Brazil; ^bSchool of Arts, Science and Humanities, University of Sao Paulo, Sao Paulo, Brazil; ^cMath Department, University of Denver; ^dUniversity of Debrecen, Hungary; ^eDPMMS, University of Cambridge, UK; ^fMath Department, Penn State University

This manuscript was compiled on February 20, 2017

Contact inhibition is a central feature orchestrating cell proliferation in culture experiments with its loss being associated with malignant transformation and tumorigenesis. We performed a co-culture experiment with human metastatic melanoma cell line (SK-MEL-147) and immortalized keratinocyte cells (HaCaT). After 8 days a spatial pattern was detected, characterized by the formation of clusters of melanoma cells surrounded by keratinocytes constraining their proliferation. In addition, we observed that the proportion of melanoma cells within the total population has increased. To explain our results we propose a spatial stochastic model (following a philosophy of the Widom-Rowlinson model from Statistical Physics and Molecular Chemistry) where we consider cell proliferation, death, migration, and cell-to-cell interaction through contact inhibition. Our numerical simulations demonstrate that loss of contact inhibition is a sufficient mechanism, appropriate for an explanation of the increase on the proportion of tumor cells and generation of spatial patterns established in conducted experiments.

keratinocyte | melanoma | co-culture proliferation | contact-inhibition | stochastic dynamics

Despite the accumulated knowledge of experimental investigation on contact inhibition as an *in vitro* manifestation of homeostatic cell density control in normal tissues the use of quantitative tools to understand its role on the growth of cancer *in situ* is only in its infancy [1, 2]. Contact inhibition can be described as the decrease of proliferation rates when the cell density increases. At the molecular level, intercellular adhesion mediated by E-cadherin (CDH1) serves as negative regulator of the cell proliferation signal by recruiting β -catenin to adherens junctions and thus repressing the transcriptional activation of proliferative genes [3]. Another mechanism is illustrated by the interplay between the cyclin-dependent kinase inhibitors p27 and p16, tumor suppressor proteins. In a recent experiment, it has been demonstrated that p16 is responsible for a stronger sensitivity to contact inhibition in combination with p27 [4]. This has provided a clue about the cancer resistance of naked mole-rats as compared to human and murine fibroblasts. While in human and murine fibroblasts the p16 expression is attenuated when cell density increases, the coordinated expression of both p16 and p27 in naked mole rat fibroblasts rendered these cells more resistant to malignant transformations. The naked mole rat fibroblast growth is strongly inhibited by cell-to-cell contacts, while the growth of human and murine fibroblasts is supported even at higher densities.

In this study we suggest that cells whose growth overcome contact inhibition, i.e. cells tolerating higher cellular densities, are more resistant to allelopathic effects of their

neighbours, and can therefore be called *allelophylic* (*allelo*, the other; *phylia*, affinity). This necessitates the proposition of a theoretical model that helps to account for different degrees of contact inhibition and quantify their role in the carcinogenesis. Mathematical models have been helpful for the analysis of high throughput data [5–7], identification of tumorigenesis [8–12], angiogenesis [13], cancer invasiveness [14–16], therapy design [17–21], and for the detection of the effects of intrinsic randomness of cellular phenomena in cancer [11, 22]. In particular, new theoretical approaches have been developed to show that contact inhibition occurs through both cell-to-cell contacts and mechanical constraints reducing cells to the substrate adhesion area [23]. In this manuscript we present theoretical and experimental frameworks designed to investigate the modulated contact inhibition and its role in the formation of a carcinoma *in situ* and to demonstrate that allelophilic properties of cancer cells is a key feature for their uncontrolled proliferation.

Results

Keratinocytes and melanoma cells co-culture proliferation. To evaluate the cell proliferation, the human metastatic melanoma (SK-MEL-147) and human immortalized keratinocytes (HaCaT) cell lines were selected for co-culture experiments. The choice of these cells allows us to mimic the interaction between the skin basal layer cells and the melanoma. Another reason for selecting these cell lines was to compare the co-culture development with patterns produced through a stochastic model dynamics. The latter involves a cell line that shows a distinct

Significance Statement

This work provides results of a quantitative study of the impact of contact inhibition upon formation and growth of tumor-like melanoma cell clusters in a co-culture with keratinocyte. We propose a stochastic model including cell division, death and migration and cell interaction through exclusion distances between cells. Keratinocyte cells have larger exclusion diameters because of its higher degree of contact inhibition and vice-versa. The agreement between experimental and numerical simulation results indicates that exclusion distances are important for analysis of development of melanoma *in situ*. Consequently, it may enable quantification of contact inhibition for cancer *in situ* diagnostics; the use of drugs increasing contact inhibition degree in cancer cells may be effective in its treatment.

The authors declare no conflict of interest.

* To whom correspondence should be addressed. E-mail: alex.amos@usp.br

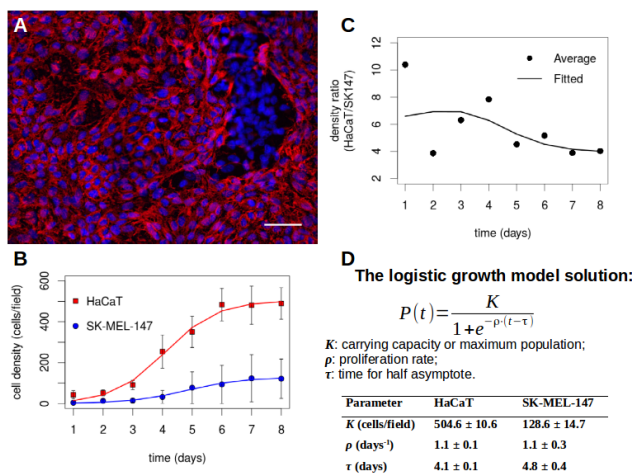


Fig. 1. HaCaT and SK-MEL-147 cells co-culture proliferation. (A) Immunofluorescent staining of E-cadherin (CDH1) on HaCaT and SK-MEL-147 co-culture. Cells were fixed and stained with the mouse anti-CDH1 (red). The secondary antibody was the goat anti-mouse Alexa Fluor 546, and nuclei were stained with Hoechst 33258 (blue). The difference in the CDH1 expression presented by SK-MEL-147 was used to distinguish between the two cell lines in co-culture images. When confluence was reached, after 4 days, it was possible to observe SK-MEL-147 domains surrounded by HaCaT cell layers. Scale bar: 50 μ m. (B) The cell proliferation curves of HaCaT and SK-MEL-147 cells in the co-culture. Cells were counted in 30 random fields of view every day. Blue circles indicate SK-MEL-147 while red squares indicate HaCaT averages of cells/field. Error bars correspond to the standard deviation. Solid lines indicate fitted data from the logistic growth model. (C) The cell density ratio (HaCaT:SK-MEL-147). The experiments started with a cell density proportion of 10:1 which decreased to \sim 4:1, despite maintaining the same proliferation rates. (D) The solution for the logistic growth model and parameter values estimates. The data were fitted by using the `nls()` function from R software.

tive degree of contact inhibition (a property of HaCaT) and another cell line that is highly tolerant, i.e., displays a loss of contact inhibition (which is a characteristic of SK-MEL-147). In the supplementary material we collect results of our experiments. At the post confluence stage the carrying capacity of HaCaT is at 1779.56 ± 130.47 cells/mm² while for SK-MEL-147 it equals 5043.51 ± 316.47 cells/mm². This demonstrates higher density levels achieved by melanoma cells (Fig. 1) confirming their distinctively lower degree of contact inhibition in comparison with keratinocytes. A similar phenomenon was observed in a different situation in [4].

At the initial stage of the experiments, cells were seeded at 250 cells/mm², at a proportion of keratinocytes to melanoma of 10:1, in a monolayer on a 24-well plate dish with coverslips. The co-culture was allowed to proliferate for eight days. The monolayer structure enabled us to investigate the role of contact inhibition in the cell proliferation at a quantitative level. After four days in the co-culture, cells reached confluence, and it was possible to observe the formation of growing melanoma clusters. These clusters are constrained by layers of keratinocytes cells, of density somewhat higher than normal (Fig. 1A). To evaluate the cell population growth, we counted the number of cells in images from 30 locations on the plate for each day of experiment. The obtained data were fitted by using the logistic growth model (Fig. 1B). The parameter ρ indicates the cell population growth rate, the maximum population density is denoted by K , and the time when the cell density equals $K/2$ is τ . The values for the fitting for each cell line are shown in Fig. 1D. Note that ρ and τ can be

made (approximately) the same for both cell lines, while the ratio between the maximum densities is \sim 4. The change in time of the ratio between the two cell population densities is shown in Fig. 1C. Here one may notice that the proportion of HaCaT cells density decays from \sim 10:1 in the first-day measurement to \sim 4:1 at the eighth day. Although the logistic model gives a proper fit for the experimental data, it yields no insight on the mechanisms underpinning the increase on the proportion of melanoma cells. To this end we propose a more detailed model aiming at providing a qualitative description of the observed data.

A stochastic model of cell proliferation for a cell-to-cell interaction through the contact inhibition.

A mathematical model explaining the above experimental results is related to the Widom-Rowlinson model [24, 25]. Since the data refer to a mono-layered co-culture arrangement, we can focus on a two-dimensional system composed of two cell types interacting as ‘colored’ billiard balls of different sizes, where each cell type has two *exclusion areas* surrounding it (one for balls of the same color, the other for balls of the different color). Here type 1 are tumor/cancer cells (SK-MEL-147) and type 2 are healthy/normal cells (HaCaT). The cells are placed at the vertices of a two-dimensional grid Λ formed by unit squares. The distance between two vertices is represented by the minimal number of unit edges connecting them. An admissible configuration of this system satisfies the following rules: (i) each vertex is occupied by at most one cell; (ii) the distance between two cells i and j , with $i, j = 1, 2$, is a positive integer not less than a given value $D(i, j)$, referred to as exclusion distance/diameter between cell types i and j .

The experiments show a close relationship between the degree of contact inhibition among cells and the cell density. It indicates a possible biological interpretation of self-exclusion diameters $D(i, j)$: they measure the degree of contact inhibition of melanoma and keratinocytes, respectively. A greater value of the exclusion diameter $D(i, i)$ indicates a higher degree of contact inhibition. Intuitively, it can be understood in terms of dense-packing the grid Λ by a single cell type. As the self-exclusion diameter of the cell increases, the maximal proportion of occupied vertices reduces. In other words, the cell density within the grid is inversely proportional to $D(i, i)$.

For the simulations presented here, the exclusion diameters were chosen to be $D(1, 1) = 1$, $D(1, 2) = D(2, 1) = 3$, and $D(2, 2) = 2$; this indicates that minimal distances occur between two tumor cells. Pictorially, a pair of healthy cells are twice less allelophilic and a healthy-tumor pair is three times less allelophilic than the pair of tumor cells. A diagram presenting features of an admissible configuration is shown on Fig. 2A: here normal (tumor) cells are represented as red (blue) colored circles. Note that our choice of $D(1, 1)$ allows the tumor cells to occupy nearest-neighbor vertices. The Fig. 2B shows a magnification of an admissible configuration on a 25×35 grid as obtained in the course of a simulation. The spatial pattern is characterized by the formation of clusters of tumor cells surrounded by a sea of normal cells separated by a layer of empty vertices. Such a pattern resembles the keratinocytes and melanoma spatial arrangement observed experimentally, as shown in Fig. 1A. As was stated, the exclusion diameter $D(i, j)$ is interpreted as a degree of contact inhibition between cell types i and j : the smaller $D(i, j)$ is the lower the degree of contact inhibition.

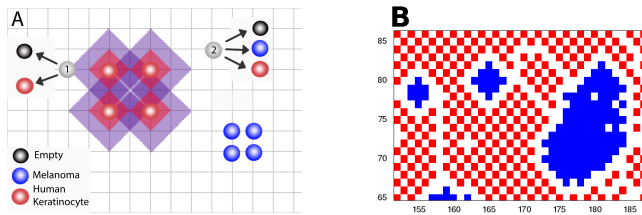


Fig. 2. An admissible configuration. (A) A diagram representing two possible state changes of the Markov chain state in accordance with chosen exclusion diameters. The red/blue circles indicate the normal/tumor cells placed at sites/vertices of a square grid. The four blue circles positioned at neighboring vertices represent a part of a densely-packed configuration allowed for tumor cells. The four red circles surrounded by diagonal red squares represent a part of a checker-board closely-packed configuration allowed for normal cells: their inhibition level prevents any further concentration. Each diagonal red square around a red circle marks an exclusion area for other red (healthy) cells. The larger purple region around the red circles covers the vertices that are forbidden for blue (tumor) cells in vicinity of healthy ones. The gray circles 1 and 2 mark two randomly selected empty vertices, located in a shadowed and non-shadowed region, respectively. The arrows from circles 1 and 2 point to possible states they can assume at the next transition: (i) vertex 1 may remain empty or become occupied by a red cell (but not blue), since the vertex is located in a purple shadowed area; (ii) vertex 2 is in a non-shadowed area and may remain empty or become occupied by either the red or blue cell. (B) An actual configuration resulting from our simulations with the blue (red) dots indicating the tumor (normal) cells. After a sufficiently long time a spatial pattern is formed, with normal cells surrounding the clusters of tumor cells and separated from them by layers of empty vertices. Note that this frame is similar to the experimental image presented on Fig. 1A.

Stochastic dynamics of cell proliferation: a Markov chain on admissible configurations. We consider four possible transitions for the i -th cell type: division, migration, and death, occurring at a rate α_i , δ_i , and ρ_i , respectively, with $i = 1, 2$. Quiescence is considered to happen at rate α_i . Cell transformations from normal to tumor is neglected due to the time scale of the experiments, and because cell lines used in experiments are from different embryonic origins. We treat the randomness of cell proliferation in terms of a discrete-time Markov chain on admissible configurations on a square grid of size $L \times L$ where $L = 200$. A given vertex of the grid can assume a state 0, 1, or 2 indicating that it is empty (0), occupied by a tumor cell (1), or by a normal cell (2).

The transition from a current towards the next state begins with selecting a vertex $x \in \Lambda$ with probability L^{-2} and verifying its state as occupied or empty.

i. If occupied by a cell type i , vertex x may remain occupied (quiescence) by it with probability α_i/Q or becomes empty with probability $(n_e^{(i)}(x)\delta_i + \rho_i)/Q$. Here $Q = Q(x) = \alpha_i + n_e^{(i)}\delta_i + \rho_i$ and $n_e^{(i)}(x)$ is the number of empty vertices at distance $D(i, i)$ from x , which can receive the migrated cell in accordance with the admissibility rule. In case of migration (occurring with probability $n_e^{(i)}(x)\delta_i/Q$), the vertex receiving the moving cell from x is chosen with probability $1/n_e^{(i)}(x)$, and it becomes occupied by the migrating cell.

ii. If vertex x is empty, it remains empty with probability $(\rho_1 + \rho_2)/R$. Next, a cell type i may occupy x with probability $n_i(x)(\alpha_i + \delta_i)\mathbb{I}(i)/R$ due to a cell division (occurring with probability $n_i(x)\alpha_i\mathbb{I}(i)/R$) or migration (having a probability $n_i(x)\delta_i\mathbb{I}(i)/R$). Here $R = R(x) = \sum_{i=1}^2 [\rho_i + n_i(x)(\alpha_i + \delta_i)\mathbb{I}(i)]$, and $n_i(x)$ stands for the number of vertices currently occupied by cell type i among the nearest allowed neighbors of x . The migrating cell is chosen with probability $1/n_i(x)$ and its vertex becomes empty after migration. Further, $\mathbb{I}(i) = 1$ or 0 when

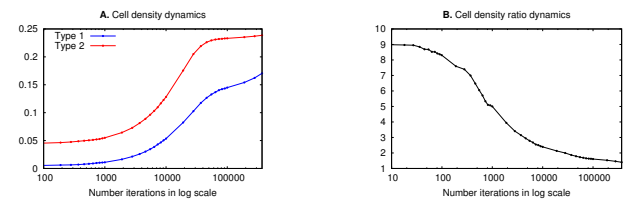


Fig. 3. The density dynamics of the stochastic model. In simulations, we consider the dynamics of our model on a grid of size 200×200 with empty borders. All the transformation rates have the same values for both cell types, with the division rates $\alpha_1 = \alpha_2 = 0.1$, the degradation rates $\rho_1 = \rho_2 = 0.01$ and the migration rates $\delta_1 = \delta_2 = 0.001$. The exclusion diameters were chosen to be $D(1, 1) = 1$, $D(1, 2) = D(2, 1) = 3$ and $D(2, 2) = 2$ and it indicates that the minimal distance occurs for the tumor cell type. Hence, normal-normal cell pairs are keeping an exclusion diameter that is a $2/3$ of that for normal-tumor cell pairs. Graphs (A) and (B) have the number of time steps of the Markov chain. The dynamics of the population of the cell types 1 and 2 is presented on frame (A), respectively, in colors blue and red. The dynamics of the ratio of population 2 to 1 is presented on the frame (B).

vertex x can or cannot be occupied by a cell of type i without violating the admissibility condition. If $R = \rho_1 + \rho_2$, i.e. vertex x cannot be occupied by any type of cell, it remains empty.

The proposed structure of Markov chain transitions gives a rather coarse-grained (and simplified) approximation to possible dynamics of the co-culture cell population. In particular, the outcomes of cell division take into account geometric characteristics of the current cell configuration only partially. (Through numbers $n_e^{(i)}(x)$ and $n_i(x)$.) It is not clear to what extent these simplifications change the overall picture of the co-culture evolution; we consider them as an initial step in the study of mathematical models of such an evolution.

Nevertheless, even such a simplified model shows a similarity between curves in Figs. 1B, C and Fig. 3.

In the stochastic dynamics, tumor cells increase their proportion due a low degree of contact inhibition.

The results of simulations based on the stochastic dynamics are analyzed in terms of the i -th cell type density, that is, the proportion of vertices of the grid which are occupied by the i -th cell type. Fig. 3A shows the dynamics of the normal and the tumor cell populations. The cell densities are shown on the vertical axis and the time steps of the Markov chain are marked in a logarithmic scale on the horizontal axis. Here one should not confuse the Markov time steps with experimental time scales. In the co-culture experiment there are multiple cell state transitions going on in parallel while in the simulation we take at most one transition per a single time step. An initial configuration is chosen with a the type 1 (tumor) cell density 0.01, type 2 (normal) cell density 0.09 and the total cell population density 0.1. The transition rates are made the same for both cell types, and only the self-exclusion diameters $D(1, 1) = 1$ and $D(2, 2) = 2$ are different, with normal cells having the self-exclusion diameter twice as long as tumor cells. (The choice of the cross-exclusion diameter $D(1, 2) = D(2, 1) = 3$ seems to play a lesser role here.) We avoid border effects by maintaining them empty during an entire simulation. The red (or blue) lines dots indicate the normal (or tumor) cell population density. During the time interval of the simulations there is a variation in the ratio of normal to tumor cell-densities, as presented on Fig. 3B. Since all proliferation rates of both cell types are the same, such a change should be attributable to the difference on the values of their exclusion diameters. In biological terms, it

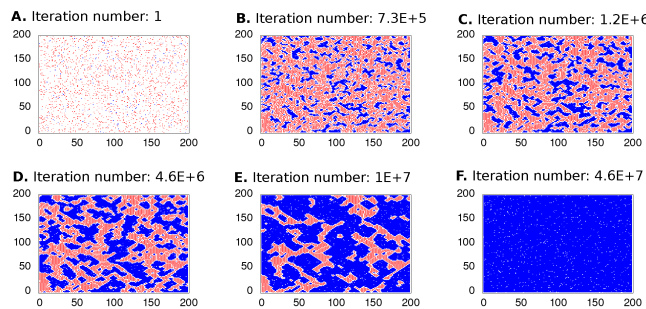


Fig. 4. Cell occupation dynamics of the stochastic model. We present the spatial pattern dynamics with the same parameters of simulations as in the Fig. 3 and the simulation took place until steady state is achieved. The initial configuration of the spatial domain is presented on the left superior frame while the right inferior frame indicates the steady state configuration. The top three frames and the bottom left frames are heatmaps corresponding to the Fig. 3 while the last two heatmaps are showing the configuration after 10^5 time steps of the Markov process. The tumor cell population became greater than the normal cells until they occupy most of the spatial domain.

means that a low degree of contact inhibition favors the tumor cells population to increase its proportion within the total cell population.

Mutual contact inhibition promotes the formation of cell clusters.

Fig. 4 shows six frames of simulated admissible configurations of the Markov chain on the grid. An initial configuration is shown on frame (A) while a steady state configuration pattern is presented on frame (F). The intermediate frames, (B), (C), (D), and (E) show transient admissible configurations. Frames (B) and (C) display an initial formation of small clusters of tumor cells. The configuration at the time step 10^5 is shown on frame (D); it corresponds to the cell population densities at the final time steps shown on Fig. 1A. The magnification of this configuration at a given region of the domain (shown on Fig. 2B) resembles the picture in Fig. 1A: one may notice that there are multiple small clusters of tumor cells surrounded by a sea of normal cells. This spatial pattern is reverted in the course of time as shown on frames (E) and (F) where tumor cells surround clusters of normal cells. Finally, at the steady state regime the spatial domain shall be mostly occupied by tumor cells with the presence of few normal cells and empty vertices. It is also important to notice that in a given tissue there are no empty spaces between cells, and in our simulations empty vertices are a consequence of exclusion diameters as a representation of contact inhibition of proliferation.

The pictures on frames (Fig. 4E) and (Fig. 4F)), do not conform with the co-culture experiments presented here. Their presence have two purposes, the first is to show the asymptotic behavior of our model and how one might expect a co-culture experiment to behave if the only difference between the tumor and normal cells where their degree of *allelophilie*. That interpretation implies that we assume that the experiments have been conducted for a relatively short periods, because the proposed stochastic model misses some important aspects of the co-culture development, or because the two cell types are different on more aspects than their degree of contact inhibition. See the Discussion section of the paper.

Distances distribution quantifies the degree of *allelophilie* of the cells. To evaluate the tolerance between cells of the same type, we performed an image-based analysis of the distribution

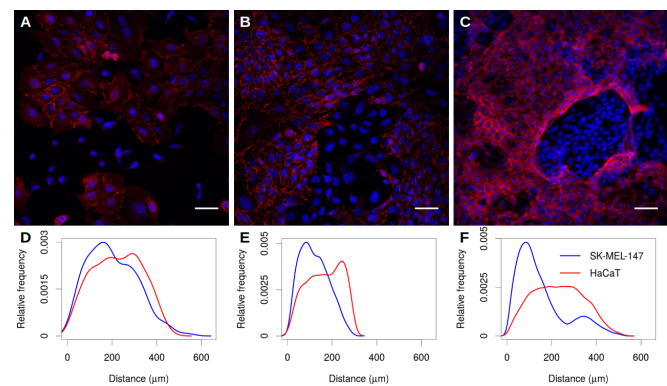


Fig. 5. Histogram of the cell-to-cell distances distribution. (A) A pre-confluent state of HaCaT and SK-MEL-147 cells in co-culture. (B) At confluence, cells occupy all space available and the SK-MEL-147 cell cluster can be observed. (C) A post-confluence state shows a high density of SK-MEL-147 cells with HaCaT surrounding. (D) The distribution of the distances of the cells in the non-confluent state shows no difference between the cell types. (E) In the confluent state, cell distance distribution begin to show a difference in the more frequent distance between cells of the same type. (F) SK-MEL-147 cells tend to aggregate and form clusters surrounded by HaCaT cells. The distance distribution shows a higher relative frequency of shorter distances of SK-MEL-147 than HaCaT cells. Red and blue lines represents the distribution of HaCaT and SK-MEL-147 cell lines respectively.

of the distances between keratinocytes or melanoma cell lines in co-culture. From the distribution of distances between cells we defined the minimal distance allowed for cells of the same type as the most frequent distance observed (mode). The distance distribution of keratinocytes assumes only distances that are found with the same range as those found in the melanoma cell cluster. Three different distance distribution signatures were observed (Fig. 5). (a) A pre-confluence state where no significant distribution between cells due to cell spread and low density (Fig. 5A). (b) At confluence, melanoma clusters are formed and it is possible to realize a difference in the histogram of distances distribution (Fig. 5B). (c) In a post-confluence state, we observed a peak in the histogram for melanoma cells (Fig. 5C) showing a shorter distance more frequent than keratinocytes. Tumors are denser than the surrounding normal tissue. This indicates higher proximity and therefore greater tolerance between cancer cells and the clustering pattern.

Keratinocyte density depends on the distance from melanoma. To evaluate melanoma proliferation restriction we quantified the density of keratinocytes in three distinct regions surrounding the tumor cells at 50, 100, and up to 150 μm and at the high density cancer cells domain (Fig. 6). As one can see, the keratinocyte density is affected by the distance from the melanoma cell domain. This morphology of epithelial cells are observed when cells are at high contact of inhibition. The keratinocytes are affected by proximity to melanoma cells, and more distant cells as a transitional morphology towards more dispersed state. Such pattern is repeated and is induced by the communication between the SK-MEL-147 and HaCaT cells. A change on the proliferation rates in co-culture experiments indicates that the interaction between the tumor and normal cells is affecting their growth capabilities. The data shows that the cells rearrange their spatial patterns to ensure that an initially well-mixed population of two cell types turns into clusters of a single cell type, either normal or tumor.

Discussion

The novelty of this work is that quantitative co-culture experiments are combined with a specific mathematical model. The co-culture experiments demonstrate that the low sensitivity to contact inhibition is responsible for a decrease in proportion rates of keratinocytes to melanoma cells and formation of tumor-like melanoma clusters. The explanation of these features has been provided through a specific mathematical model.

Our aim was to understand the role of a low degree of contact inhibition on the development of cancer *in situ*. The melanocyte and keratinocyte interaction through a direct contact is an important mechanism controlling their proliferation [26]. We observed a decrease on the proportion of keratinocytes to melanoma in the course of time: see Fig. 1C. Furthermore, a development of spatial pattern was observed, progressing from a well-mixed configuration (Fig. 5A) towards dense melanoma clusters surrounded by spatially spread domains with a relatively high density of keratinocytes (Fig. 5C).

To explain the observed phenomena, we use a mathematical model with a particular form of interaction between cells of the same and different types through different degrees of contact inhibition. The melanoma cells are supposed to have a lower level of contact inhibition than the keratinocyte cells. A mathematical mechanism of a stochastic nature has been considered, based on a Widom-Rowlinson-type model [27] and its modification [25]. This is presented as a Markov chain on admissible cell configurations with specified exclusion diameters for the keratinocyte (healthy) and melanoma (tumor) cells; in the simulations we use the same rates for supposed transitions for cells of both types: division, death, and migration. Numerical simulations have been performed, confirming a number of features observed in the co-culture experiments. Tumor cells have smaller exclusion diameters; according to our interpretation, they are less sensitive to contact inhibition than healthy ones.

The proposed theoretical approach enabled us to reproduce a temporal increase on the melanomas proportion in a series of numerical simulations. A formation of spatial patterns on the two-dimensional grid has been also confirmed, albeit not at a desired level of accuracy. An existing agreement between the co-culture experiments and numerical simulations suggests that the development of a co-culture of melanoma and keratinocyte cells has a distinctive stochastic aspect which can be quantified. This may lead to a new methodology of prognosis for the development of carcinoma *in situ*, particularly formation of tumor-type clusters of melanoma cells and a collective reaction of keratinocyte cells to such a formation. Specific biochemical mechanisms of cellular interaction standing behind these phenomena need further studies. This would involve a variety of mathematical models modifying the present model. In particular, exclusion areas for healthy cells may vary and depend upon their distances from developing clusters of cancer cells.

Our characterization of the degree of contact inhibition suggests the use of the cells-to-cells distances to quantify sensitivity to contact inhibition. Tissues with tumors are denser than the normal ones [28–30] and, thus, tumor cells are expected to be closer to each other forming geometrically packed arrangements. This is confirmed in Fig. 5F where we evaluate the distances distribution of keratinocytes and melanoma cells after confluence. The distribution of melanoma

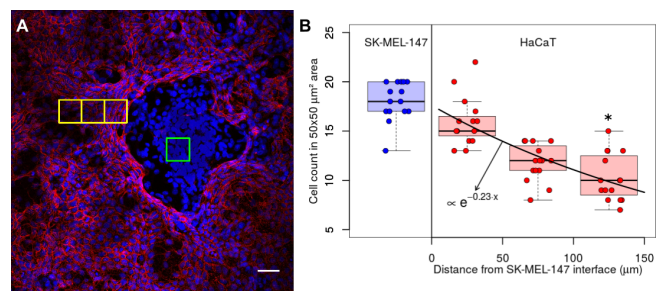


Fig. 6. HaCaT density depends on distance from SK-MEL-147 cells. (A) Representative image of a SK-MEL-147 cell cluster surrounded by HaCaT cells. Green squares indicates high density of SK-MEL-147 cells and yellow squares indicates HaCaT cells areas with different densities at distances of 0-50, 51-100 and 101-150 μm from SK-MEL-147 cells. Scale bar: 50 μm . (B) The keratinocytes density dependence on the distance from the interface of the melanoma clusters. Boxplots indicates the median and interquartile range for SK-MEL-147 (blue) and HaCaT (red) cell count in a 50 x 50 μm^2 area from 15 selected locations of duplicated experiments. The data were fitted via an exponential decay. (*): One-way ANOVA and Tukey's post-test between HaCaT and SK-MEL-147 density ($p < 0.001$)

cell-to-cell distances is displaced to the left in comparison with the keratinocytes and that reinforces our interpretation of the exclusion diameters as a measure of the degree of contact inhibition of a cell.

The present experiments have been conducted with co-culture cell mono-layer. In the mathematical model it was interpreted as a stochastic dynamics of a two-dimensional admissible configuration on a grid. The passage to dimension three is mathematically possible (at a cost of an increase in the simulation time). We expect the qualitative features of the model presented here to be preserved. Such an extension would enable us to evaluate experiments on the formation of *in vivo* carcinoma *in situ* and to compare experimental results with simulations, aiming to establish a quantitative model to investigate carcinogenesis at its early stage. However, it would require new methods of marking and counting cells in the co-culture.

Contact inhibition and the necessity for its full characterization.

The theoretical curve for the ratio between the tumor and normal cell density has a more pronounced shape in comparison with the experimental data (Figs. 4B and 1C). This may be attributed to other effects controlling cell proliferation in the co-culture. A more precise correspondence between experimental and theoretical results might be established by engineering two cell lines with very similar proliferation, death, and migration rates but having different degrees of modulation of contact inhibition. This could have practical applications on the design of cancer treatment aiming to increase the degree of contact inhibition of tumor cells [4, 31, 32].

The simulation based on a mathematical model of a realistic cell interaction is quite promising: the higher level of *allelophilia* of the tumor cells may be a key feature for their prevalence within tissues. This can be detected through exclusion diameters as measure of the degree of contact inhibition of cell proliferation. Other types of mutual influence could also be taken into account.

The co-culture experiments show that the mechanism of a higher allelophilic degree might be due to molecular complexes surrounding the cells (see Fig. 6). This shows the necessity of establishing a biochemical characterization of the exclusion diameters (or more factors) involved in the cell interaction.

A view in the general context of cancer research. Let us address some aspects of possible criticism of our approach. We recognise that an excessive use of analogies between biological phenomena taking place at different scales (e.g., tissue and ecological levels) is risky. On the other hand, the evolutionary paradigm is an established tool for understanding carcinogenesis, provided that a proper caution is taken [18, 21, 33]. In particular, while comparing ecological phenomena with those at a tissue level one must consider the specificity of cell-to-cell interactions and propose proper forms for quantitative modeling. An important mechanism here is the presence of membrane molecules causing the less immunogenic cancer cells to be selected for survival [34, 35]. Another example is the development of cancer cells capable of performing glycolysis in hypoxic environment, when tumors reach a critical size interpreted as an adaptation [36, 37]. Such a new feature of cancer cells causes local acidosis that is toxic to normal cells and is considered as an analog of allelopathic interactions between plants or bacteriocins in microtube [38]. In contrast, the present study focuses on an impact of an allelophilic behavior upon the formation of a carcinoma *in situ* which, within the evolutionary paradigm, indicates that the selective advantage of cancer cells may happen because of their greater degree of allelophilia.

Materials and Methods

Cell culture Support information contains cell culture proliferation assay. Human immortalized keratinocytes (HaCaT) and human metastatic melanoma (SK-MEL-147) cell lines were used in this study. Cells were grown in Dulbecco's Modified Eagle's Media (DMEM) supplemented with 10% fetal bovine serum (FBS) in tissue culture incubator (5% CO₂ at 37 °C).

CDH1 immunofluorescence HacaT and SK-MEL-147 cells were seeded over 24-well plate with coverslips and grown for eight days. Cells were fixed with ice-cold methanol:acetone (1:1) at 4 °C for 15 min. Cells were blocked with 5% bovine serum albumin (BSA) in phosphate-buffered saline for 1 h at room temperature. After blocking, cells were incubated with antibody against CDH1 (1:200 in 1% BSA, Transduction Laboratories) for 45 min at room temperature. After washing, the coverslips were then incubated with Alexa Fluor 546 secondary antibody (1:400, Invitrogen) and 50 µg/mL Hoechst 33258 (Invitrogen) in 1% BSA for 2 h at room temperature. Immunofluorescence images for each day of experiment ($n=30$) were acquired with an Nikon Eclipse E600 microscope, under 20x objective.

ACKNOWLEDGMENTS. This study was supported by CAPES (Process n. 88881.062174/2014-01). YS thanks the Math Department, Penn State University, for support and attention. We thank Prof. Marsha Rosner for careful reading and suggestions that improved the quality of this manuscript.

References

- Abercrombie M (1979) Contact inhibition and malignancy. *Nature* 281(5729):259–262.
- Hanahan D, Weinberg RA (2011) Hallmarks of cancer: the next generation. *Cell* 144(5):646–674.
- Stockinger A, Eger A, Wolf J, Beug H, Foisner R (2001) E-cadherin regulates cell growth by modulating proliferation-dependent beta-catenin transcriptional activity. *The Journal of Cell Biology* 154(6):1185–1196.
- Seluanov A et al. (2009) Hypersensitivity to contact inhibition provides a clue to cancer resistance of naked mole-rat. *Proceedings of the National Academy of Sciences of the United States of America* 106(46):19352–19357.
- Gatenby RA, Maini PK (2003) Mathematical oncology: Cancer summed up. *Nature* 421(6921):321–321.
- Anderson ARA, Quaranta V (2008) Integrative mathematical oncology. *Nature Reviews Cancer* 8(3):227–234.
- Kreeger PK, Lauffenburger DA (2010) Cancer systems biology: a network modeling perspective. *Carcinogenesis* 31(1):2–8.
- Byrne HM (2010) Dissecting cancer through mathematics: from the cell to the animal model. *Nature Reviews. Cancer* 10(3):221–230.
- Kuang Y, Nagy JD, Eikenberry SE (2015) *Introduction to Mathematical Oncology*. (CRC Press), 1 edition.
- Bozic I, Allen B, Nowak MA (2012) Dynamics of targeted cancer therapy. *Trends in molecular medicine* 18(6):311–316.
- Tomasetti C, Vogelstein B (2015) Variation in cancer risk among tissues can be explained by the number of stem cell divisions. *Science* 347(6217):78–81.
- Patel AA, Gawlinski ET, Lemieux SK, Gatenby RA (2001) A cellular automaton model of early tumor growth and invasion. *Journal of Theoretical Biology* 213(3):315–331.
- Anderson ARA, Weaver AM, Cummings PT, Quaranta V (2006) Tumor morphology and phenotypic evolution driven by selective pressure from the microenvironment. *Cell* 127(5):905–915.
- Gatenby RA, Gawlinski ET (1996) A reaction-diffusion model of cancer invasion. *Cancer Research* 56(24):5745–5753.
- Rejniak KA, Anderson ARA (2011) Hybrid models of tumor growth. *Wiley Interdisciplinary Reviews. Systems Biology and Medicine* 3(1):115–125.
- Hatzikirou H, Basanta D, Simon M, Schaller K, Deutsch A (2012) 'Go or grow': the key to the emergence of invasion in tumour progression? *Mathematical medicine and biology: a journal of the IMA* 29(1):49–65.
- Gatenby RA, Frieden BR (2002) Application of information theory and extreme physical information to carcinogenesis. *Cancer Research* 62(13):3675–3684.
- Gatenby RA, Vincent TL (2003) An evolutionary model of carcinogenesis. *Cancer Research* 63(19):6212–6220.
- Gatenby RA, Frieden BR (2008) Inducing catastrophe in malignant growth. *Mathematical Medicine and Biology* 25(3):267–283.
- Gatenby RA, Silva AS, Gillies RJ, Frieden BR (2009) Adaptive Therapy. *Cancer Research* 69(11):4894–4903.
- Arnal A et al. (2015) Evolutionary perspective of cancer: myth, metaphors, and reality. *Evolutionary Applications* 8(6):541–544.
- Delbrück M (1940) Statistical fluctuations in autocatalytic reactions. *J. Chem. Phys.* 8:120–124.
- Puliafito A et al. (2012) Collective and single cell behavior in epithelial contact inhibition. *Proceedings of the National Academy of Sciences* 109(3):739–744.
- Mazel A, Suhov Y, Stuhl I, Zohren S (2014) Dominance of most tolerant species in multi-type lattice Widom-Rowlinson models. *Journal of Statistical Mechanics: Theory and Experiment* 2014(8):P08010. arXiv: 1403.5825.
- Mazel A, Suhov Y, Stuhl I (2015) A Classical WR Model with q Particle Types. *Journal of Statistical Physics* 159(5):1040–1086.
- Cichorek M, Wachulska M, Stasiewicz A, Tyminska A (2013) Skin melanocytes: biology and development. *Advances in Dermatology and Allergology/Postepy Dermatologii i Alergologii* 30(1):30–41.
- Widom B, Rowlinson J (1970) New model for the study of liquid-vapor phase transition. *Journal of Chemical Physics* 52:1670–1684.
- Eisenhoffer GT, Rosenblatt J (2013) Bringing balance by force: live cell extrusion controls epithelial cell numbers. *Trends in Cell Biology* 23(4):185–192.
- Butcher DT, Alliston T, Weaver VM (2009) A tense situation: forcing tumour progression. *Nature Reviews. Cancer* 9(2):108–122.
- Kumar S, Weaver VM (2009) Mechanics, malignancy, and metastasis: the force journey of a tumor cell. *Cancer Metastasis Reviews* 28(1-2):113–127.
- Zeng Q, Hong W (2008) The emerging role of the hippo pathway in cell contact inhibition, organ size control, and cancer development in mammals. *Cancer Cell* 13(3):188–192.
- Harvey KF, Zhang X, Thomas DM (2013) The Hippo pathway and human cancer. *Nature Reviews. Cancer* 13(4):246–257.
- Breivik J (2005) The evolutionary origin of genetic instability in cancer development. *Seminars in Cancer Biology* 15(1):51–60.
- Zhang K, Lu Q, Zhang Q, Hu X (2004) Regulation of activities of {NK} cells and {CD4} expression in t cells by human hnp-1, -2, and -3. *Biochemical and Biophysical Research Communications* 323(2):437 – 444.
- Dunn GP, Old LJ, Schreiber RD (2004) The three es of cancer immunoediting. *Annual Review of Immunology* 22:329 – 360.
- Gatenby RA, Gillies RJ (2004) Why do cancers have high aerobic glycolysis? *Nature Reviews. Cancer* 4(11):891–899.
- Lash GE et al. (2002) Oxygen as a regulator of cellular phenotypes in pregnancy and cancer. *Canadian Journal of Physiology and Pharmacology* 80(2):103–109.
- Crespi B, Summers K (2005) Evolutionary biology of cancer. *Trends in Ecology & Evolution* 20(10):545–552.