

Holocene selection for variants associated with cognitive ability:

Comparing ancient and modern genomes.

Michael A. Woodley of Menie^{1,2*}, Shameem Younuskunja³, Bipin Balan⁴, Davide Piffer⁵

¹Scientist in Residence, Technische Universität Chemnitz, Germany

²Center Leo Apostel for Interdisciplinary Studies, Vrije Universiteit Brussel, Belgium

³Weill Cornell Medicine, Cornell University, Qatar

⁴Department of Agriculture and Forestry Science, University of Palermo, Italy.

⁵Department of Psychology, Ben Gurion University of the Negev, Israel

*Email for correspondence: M.A.Woodley@vub.ac.be

ABSTRACT

Human populations living in Eurasia during the Holocene experienced significant evolutionary change. It has been predicted that the transition of Holocene populations into agrarianism and urbanization brought about culture-gene co-evolution that favoured via directional selection genetic variants associated with higher general cognitive ability (GCA). Population expansion and replacement has also been proposed as an important source of GCA gene-frequency change during this time period. To examine whether GCA might have risen during the Holocene, we compare a sample of 99 ancient Eurasian genomes (ranging from 4,557 to 1,208 years of age) with a sample of 503 modern European genomes, using three different cognitive polygenic scores. Significant differences favouring the modern genomes were found for all three polygenic scores (Odds Ratio=0.92, $p=0.037$; 0.81, $p=0.001$ and 0.81, $p=0.02$). Furthermore, a significant increase in positive allele count over 3,249 years was found using a sample of 66 ancient genomes ($r=0.217$, $p_{one-tailed}=0.04$). These observations are consistent with the expectation that GCA rose during the Holocene.

Introduction

The Holocene (11,700 ybp to the present) was a time of significant evolutionary change, especially among the populations of Europe and Asia. Based on the degree to which new haplotypes were arising and diverging, it has been estimated that the rate of adaptive evolution among these populations may have been 100 times greater than during the preceding Pleistocene (1). Novel adaptations that are known to have arisen and spread during this period include lactase persistence (2) and alterations in haemoglobin permitting enhanced tolerance to diminished oxygen levels among populations living at altitude (3).

Other significant adaptations that may have been favoured by selection during this period are the general learning and problem solving mechanisms that give rise to General Cognitive Ability (GCA). At the level of individual differences in cognitive performance, GCA is associated with the positive manifold that exists among performance variances on different measures of cognitive abilities. In addition to GCA, cognitive ability measures also tap specialized sources of ability variance, which are associated with performance in specific domains (e.g. verbal, spatial and perceptual abilities) (4). GCA is highly heritable with behaviour genetic twin studies indicating that between 22% and 88% of the variance in GCA, depending on age, may be due to the action of additive genetic effects (5). Consistent with this, studies employing genome-wide complex trait analysis (GCTA) GREML have found that a significant amount of the variance in GCA can be directly attributed to large numbers of variants with individually small, but collectively large (additive) effects on the phenotype (6).

GCA is not just present in human populations, but is present (at lower levels) also in a variety of animal taxa, including chimpanzees and other primates, racoons, mice, rats and ravens (7). The existence of these species differences furthermore indicates that GCA has been under directional selection, particularly in the primate clade. This seems to be especially true in the case of abilities associated with tool-use, which in primates are among the most strongly associated with GCA, in addition to being the most heritable and are also associated with the strongest signals of recent directional selection (8, 9). This is consistent with the theoretical expectation (10) that GCA is an adaptation to coping with *evolutionarily novel* challenges – these being challenges that occur infrequently throughout the phylogeny of a lineage, thus cannot be solved with recourse to specialized cognitive systems (such as those associated with cheater detection or language acquisition). Instead such problems require generalized and open-ended problem solving systems, such as learning and working memory, in order to tailor solutions to them. The ability to *innovate* a solution to such a problem (via the development of a tool) is a key manifestation of the action of these generalized problem-solving systems (10).

The Holocene is believed to have been an *environment of evolutionary relevance* for GCA as it was characterized by major transitions among human populations, especially in Eurasia, away from a hunter-gatherer mode of subsistence, towards a sedentary agriculture-based one and beyond that to urbanization (1, 11). This brought with it many evolutionarily novel problems, such as having to cope with increased population densities and new forms of warfare (1, 11). Innovations that played a major role in facilitating this transition would have included the domestication of

cultivars and animals, the development of novel tools for raising the productivity of land (such as the plough), and the development of novel weapons of war (11). Cultural innovations such as monotheism, monarchy, aristocracy, feudalism and currency-based economics arose in response to the need for coping with the hierarchical power distribution characteristic of large, static populations (11). Those populations that were successful in using innovations to solve novel problems would furthermore have had an advantage in warfare, allowing them to replace less successful populations. Population growth would have increased the chances of rare GCA enhancing mutations arising, which would have favoured the aggregate fitness of those populations permitting them to expand to the greatest extent (1, 11). Thus positive culture-gene co-evolutionary feedback might have rapidly increased GCA (11).

As was mentioned previously, GCTA GREML has demonstrated that GCA arises from the action of many variants each with small, but additively large effects on the phenotype (6). High-resolution genome-wide association studies (GWAS) have identified a number single nucleotide polymorphisms (SNPs), primarily associated with the development of the central nervous system, which predict variance in both GCA and educational attainment – with which GCA shares approximately 60% of its linkage pruned genetic variance (12, 13, 14, 15, 16). These SNPs can be concatenated into *cognitive polygenic scores* (henceforth POLY_{COG}), which are normally distributed and can be used as a molecular index of GCA and educational attainment in standard regression-type analyses. In the present analysis, a sample of 99 ancient Holocene genomes sourced from Europe and West Asia, aged between 4,557 and 1,208 years (mean age=3,443 years, *SD*=623.52), with reasonable (approximately

30%) coverage depth (17) will be used to test the hypothesis of gene frequency change, favouring higher POLY_{COG} – and therefore higher GCA. This will be achieved by comparing the aggregate POLY_{COG} levels of these ancient genomes with a genetically matched modern population, specifically the 503 individuals comprising the 1000 Genomes Phase3 EUR sample (for full details on these samples see the *Materials and Methods* section). Such an analysis builds on previous comparative analyses utilizing these same samples for tracking the changes in single SNPs associated with specific phenotypic traits (such as skin reflectance, eye colour and lactase persistence) (17).

Results

The data were categorical (positive vs. negative allele/ancient vs. modern population) hence a 2x2 contingency table was created for each of the three POLY_{COG} (for details of how each polygenic score was computed, see the *Materials and Methods* section) assigning allele counts by GWAS effect status (positive or negative effect) to ancient and modern genomes. Odds ratios (OR) of the difference in POLY_{COG} between the ancient and modern genomes were computed and are reported in Table 1. As Fisher's Exact Tests and χ^2 Tests showed nearly identical results, only the former are reported. In addition the *G*-Test (log-likelihood ratio) is utilized as an alternative test of the significance of the difference. As a further robustness test, the difference in POLY_{COG} between the two sets of genomes was examined using the unconditional Barnard's and Boschloo's Exact Tests. These statistics are extremely computationally intensive when large numbers of pair-wise comparisons are employed. Therefore they could

only be used for the two smaller POLY_{COG} (9 and 11 SNP). The results were identical to those obtained via the conditional techniques.

Table 1.

2 x 2 contingency tables with positive and negative GWAS effect allele counts for ancient and modern genomes for each of the three POLY_{COG}, along with Fisher's Exact Test OR and *G*-Test. The non-integer allele counts result from averaging the genomes of two samples (RISE507 and RISE508) that came from the same individual. The samples had different allele counts likely resulting from different coverage.

POLY _{COG}	Genome grouping	Positive allele count	Negative allele count	Fisher's Exact Test. OR; 95%CI; <i>p</i> -value.	<i>G</i> -Test; <i>p</i> -value
Nine linked-hits	Ancient genome	177	273	0.92 (0.665-0.990);	<i>G</i> =4.445;
POLY_{COG}. <i>N</i>=9	Modern genome	4017	5037	<i>p</i> = 0.037	<i>p</i> =0.035
Pooled analysis	Ancient genome	3298.5	3997.5	0.81 (0.882-0.969);	<i>G</i> =10.486;
POLY_{COG} (Okbay et al., 2016). <i>N</i>=130	Modern genome	61666	69114	<i>p</i> =0.001	<i>p</i> =0.001
Significant hits	Ancient genome	268.5	282.5	0.81 (0.683-0.969);	<i>G</i> =5.536;
POLY_{COG} (Davies et al., 2016). <i>N</i>=11	Modern genome	5960	5106	<i>p</i> = 0.02	<i>p</i> =0.019

A forest plot of the OR values for the three POLY_{COG} scores is presented in Figure 1.

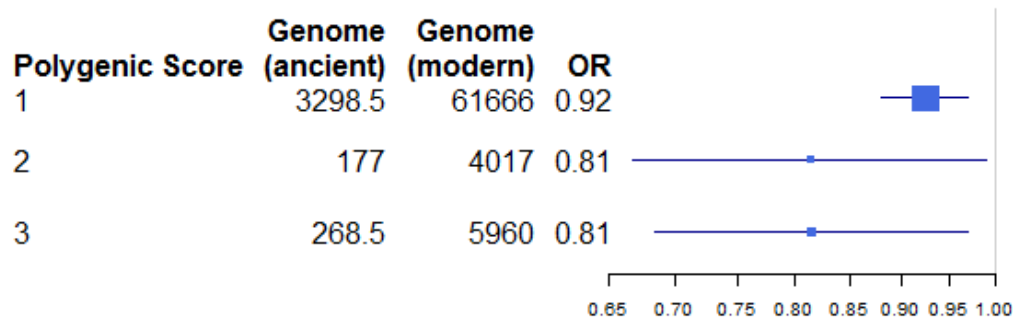


Fig. 1. Forest plot of the OR of the difference between ancient and modern genomes for three POLY_{COG} (130, 9 and 11 SNP, labelled 1, 2 and 3 respectively). Box size corresponds to SNP numbers.

These results indicate that modern European genomes have higher POLY_{COG} relative to ancient ones (sourced from Europe and West Asia).

A second analysis was conducted to investigate the association between POLY_{COG} and sample year within the subset of 66 ancient genomes for which age estimates were available (17). If selection is operating on these variants throughout the 3,249 years covered by this sample then less ancient genomes should have higher POLY_{COG} relative to more ancient ones. The correlation of positive allele frequency with the sample year (scaled using the BCE/CE calendar eras) was in the expected positive direction (samples from more recent years had higher positive allele counts) the result is significant when a one-tailed test is used ($r=0.217$, 95% CI=-0.026 to 0.043, p_{one-}

$t_{\text{tailed}}=0.04$), which is theoretically justified on the basis that the direction of the effect was anticipated (18). The scatter plot is presented in Figure 2.

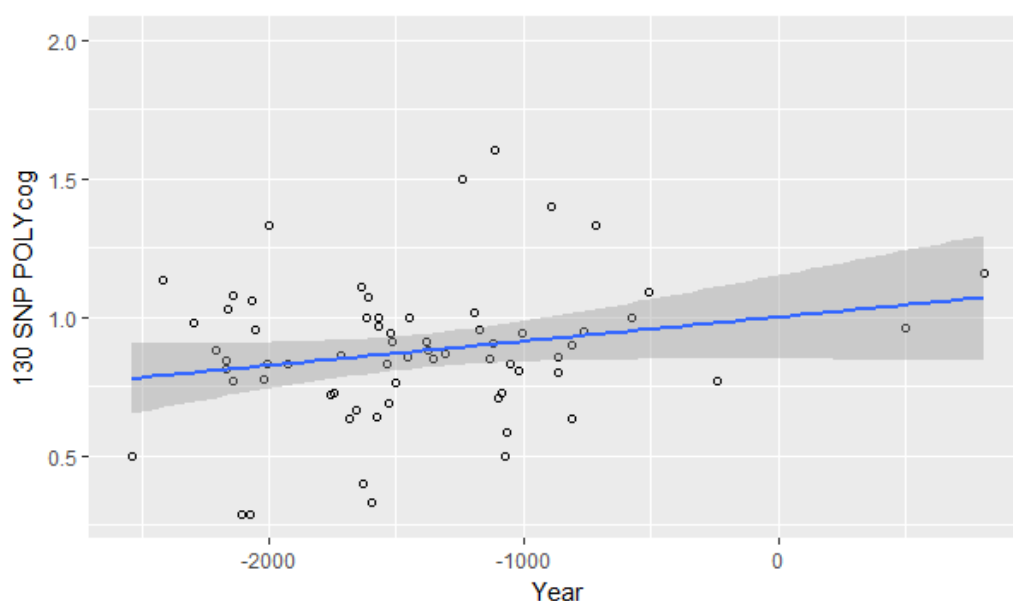


Fig. 2. Scatter plot of 130 SNP POLY_{COG} positive allele counts for 66 ancient genomes as a function of year (scaled in terms of the BCE/CE calendar eras). $r=0.217$, $p_{\text{one-tailed}}=0.04$, $N=66$. Grey area around trend line corresponds to the 95% CI.

Discussion

Consistent with theoretical expectations, the Holocene appears to have been an environment of evolutionary relevance for GCA, as modern European genomes have higher POLY_{COG}, relative to those sourced (predominantly) from Bronze Age Europe and West Asia. A second analysis revealed that within a subset of the ancient genome sample, there was a (one-tailed) significant trend towards increased positive allele counts in the less ancient samples.

This increase in POLY_{COG} can be theoretically accounted for in four different ways: i) the appearance of new mutations, ii) genetic drift involving already existing alleles, iii) selection pressure on extant alleles, and iv) population expansion, replacement and admixture due to migration.

The first two theories can be discounted, as the POLY_{COG} scores utilized here are comprised of SNPs that are present (either directly or in strong linkage) in both the ancient and modern populations. Therefore these particular SNPs did not arise *de novo* in this period. Genetic drift based models would make the assumption that the variants comprising POLY_{COG} are selectively neutral, and that their distributions should therefore correspond to the action of genetic diffusion and population bottlenecks. It is unclear however why this would lead to modern genomes being higher in POLY_{COG} relative to ancient ones, and is furthermore at odds with the observation from studies utilizing various POLY_{COG} that these do not appear to be selectively neutral in contemporary human populations (19, 20, 21, 22, 23, 24). This leaves selection pressure acting on already existing alleles and population expansion, replacement and admixture.

The idea that selection takes many millennia to produce noticeable changes in a population is at odds with data indicating that within human populations, changes in the means of traits such as height and age at menarche can occur due to selection in as little as five decades (25). Selection operating over the course of millennia (as in the present case) would be expected to produce quite considerable change. As was discussed in the *Introduction*, Holocene populations, especially those in Eurasia, appear to have undergone accelerated adaptive evolution relative to those living in the

Pleistocene (1, 11). Increasing cultural complexity and technological sophistication among Holocene populations therefore likely arose in part from selection favouring GCA. Cultural and technological change can in turn create, via feedback, conditions favouring higher GCA (11, 26). This process likely continued until the Late Modern Era, where it has been noted that among European populations living between the 15th and early 19th centuries, those with higher social status (which relates to GCA via common causal variants; 27) typically produced the most surviving offspring. These in turn tended towards downward social mobility due to intense competition, replacing the reproductively unsuccessful low-status stratum and effectively ‘bootstrapping’ those populations via the application of high levels of skill to solving problems associated with production and industry. This process eventually led to the Industrial Revolution in Europe (28, 29). The millennia long directional selection favouring higher GCA not only ceased, but went into reverse among European-derived populations living in the 19th century (30), largely in response to factors such as the asymmetric use of birth control and prolonged exposure to education among those with high GCA (31). Consistent with this, it has been found that various $POLY_{COG}$ negatively predict fertility in contemporary Western populations (21, 22, 23, 24). It is important to note that this process (working in the opposite direction) has likely attenuated the difference in $POLY_{COG}$ between the modern and ancient genomes noted in the present study.

Changes in allele frequencies can also occur via population expansion and replacement, perhaps driven in part by the relative advantage in conflict conferred upon populations by GCA. Consistent with this, as a possible result of the Neolithic revolution and during the Bronze Age in Europe, three Y-chromosomal haplogroups

(R1a, R1b, I1), which are associated with farming or pastoralist cultures, came to mostly replace the formerly dominant hunter-gatherer lineages (associated predominantly with haplogroups G2a and I2) (32). Ancient farming societies in particular are associated with higher social complexity and the use of more complex tools (11); furthermore the contemporary distribution of these three haplogroups is positively associated with the variation in cognitive ability among contemporary European nations (32). The major population movements occurred in the period between 3.5 and 7.3 kybp, however, as noted in (17), westward migration of populations associated with haplogroup R1a continued from the Pontic-Steppe region between 5 and 1.4 kybp.

The most likely explanation for the $POLY_{COG}$ increase therefore involves a combination of the third and fourth theoretical scenarios. In response to differential exposure to evolutionarily novel environmental challenges, populations in Holocene Eurasia came to acquire different levels of $POLY_{COG}$, which via its effects on cultural and technological sophistication set up culture-gene co-evolutionary pressures favouring yet greater levels of $POLY_{COG}$. Population expansion, especially involving populations with higher $POLY_{COG}$ levels, would have led to lower $POLY_{COG}$ populations being replaced. Being potentially highly fitness enhancing, admixture among populations would have furthermore led to the constituent variants of $POLY_{COG}$, moving rapidly between populations. Directional selection favouring higher levels of $POLY_{COG}$ may have furthermore continued until the early 19th century in some populations, at which point the selection pressure reversed.

It has been noted that concomitant in time with the apparent increase in $POLY_{COG}$ observed presently is a parallel selection trend favouring smaller brains (33). These trends may at first appear to be contradictory, as GMA is positively associated with brain volume (34). It must be noted however that meta-analyses reveal that the association is weak ($\rho=0.26$), indicating that the majority of the variance in brain volume is unrelated to variance in GMA (34). Furthermore studies utilizing $POLY_{COG}$ have found that it does not predict variation in brain volume, despite both $POLY_{COG}$ and brain volume making independent contributions to GMA (35). These findings suggest that the decline in brain volume during the Holocene may have been a consequence of enhanced brain efficiency stemming from increased corticalization and neuronal connectivity, with more bioenergetically optimized brains simply requiring less mass to achieve greater processing power. It may therefore be this process that the increase in $POLY_{COG}$ is tracking in our samples. A prediction stemming from (33) is that variants that are uniquely predictive of brain volume should show the opposite trend in time to $POLY_{COG}$ when examined in the context of the present samples.

A limitation on the present work that needs to be discussed is linkage disequilibrium (LD) decay. This takes place when a pair of SNPs on a chromosome in a population move from linkage disequilibrium to linkage equilibrium over time, due to recombination events eventually occurring between every possible point on the chromosome (36). LD decay can be an issue when comparing polygenic scores computed using genetically different populations (i.e. either across time or space). Since most GWAS hits are actually tag SNPs, decay in LD implies that the causal SNPs will be further removed from the tag SNPs. However, the tag SNPs will

resemble a sample of random SNPs. Since the frequency of the average SNP allele is 50%, the GWAS hits will tend to converge towards an average frequency of 50%, with increasing LD decay. The implication of this for our analysis is that our estimates of the difference in $POLY_{COG}$ are therefore conservative, when these have a frequency lower than 50%, whilst the opposite is true when they have higher frequencies. The average frequencies in the modern 1000 Genomes samples were the following: for the 130 SNP $POLY_{COG} = 47\%$, 9 SNP $POLY_{COG} = 44\%$ and the 11 SNP $POLY_{COG} = 53\%$. Furthermore, because GCA likely involves around 10,000 causal variants (37), and as there is relatively little genetic distance between the ancient and modern genomes, as indicated by the F_{st} value (0.016), the results of simulations indicate that LD decay is ultimately expected to be minimal (38) and should not be confounding the results.

The present effort constitutes a purely empirical attempt to show the theoretically anticipated change in $POLY_{COG}$ over time utilizing very simple methodology, which makes few modelling assumptions. The difference in $POLY_{COG}$ between the ancient and modern genomes is indifferent to the use of alternate versions of $POLY_{COG}$ and to the use of various statistical techniques for quantifying the significance of the group difference. This suggests that the finding enjoys multi-trait, multi-method validity (39). Building on this, future research could examine the spread of $POLY_{COG}$ via admixture analysis using ancient genomes. Currently this has been used to track single SNPs (17), tracking complex polygenic scores is doubtlessly more of a challenge however, requiring bigger samples and also analytical techniques that are sensitive to changes in the linkage phase of the SNPs comprising the polygenic scores over time.

Materials and Methods

Modern genomes. Previous studies comparing ancient and modern genomes have utilized the Phase3 1000 Genomes dataset (40) as a reference set, on the basis that it is the most globally representative set of genomes currently available (17). The 2,504 samples in the Phase3 release are sourced from 26 populations, which can be categorised into five super-populations by continent. These are East Asian (EAS), South Asian (SAS), African (AFR), European (EUR) and American (AMR). These genomes were obtained in the form of VCF files, via the online 1000genomes FTP. The EUR sample, which is the most closely related to the ancient genomes (17), is comprised of 503 individuals from five different countries (Finland, Great Britain, Italy, Spain and the United States – specifically North-Central Europeans from Utah).

Ancient genomes. Data on the ancient Holocene genomes were obtained from the *European Nucleotide Archive* in the form of BAM files (accession number PRJEB9021). These genomes, which were used previously to analyse the spread of variants associated with skin and eye colour, among other traits (17), were aged between 4,557 and 1,208 years (mean age=3,443 years, $SD=623.52$), covering the early Bronze to early Iron ages. There are 102 genomes in total, however two samples (RISE507 and RISE508) were sourced from the same individual (17). The total allele count was therefore calculated using the full sample alternately for each version of the genotype then the results of the two analyses were averaged. The majority of the ancient genomes were sourced from regions that are presently considered to be parts of Europe, the remainder being sourced from East and West Asia. Late Bronze Age

European and Central Asian gene pools resemble present-day Eurasian genetic structure (17). Indeed, with values of F_{st} ranging from 0.00 to 0.08, the genetic distances between present-day European 1000 Genomes samples and the Ancient samples indicate little to modest levels of genetic differentiation (little differentiation corresponds to an F_{st} range of 0 to 0.05, and modest to an F_{st} range of 0.05 to 0.15 [41]). These values are lower than the distance between present-day Europeans and East Asians ($F_{st}=0.11$) (17). Despite this the two ancient genomes belonging to the Siberian *Okunevo* culture (RISE515 and RISE516) were somewhat of an outlier, exhibiting modest differentiation relative to the EUR sample when compared with the other genomes in the sample (average $F_{st}=0.074$ vs. 0.016 for the remainder of the sample). Their removal reduced the genetic differentiation between the two samples, yielding 99 ancient genomes, sourced from sites located in present-day Armenia (8.08%), Czech Republic (6.06%), Denmark (6.06%), Estonia (1.01%), Germany (10.1%), Hungary (10.1%), Italy (3.03%), Kazakhstan (1.01%), Lithuania (1.01%), Montenegro (2.02%), Poland (7.07%), Russia (36.36%) and Sweden (8.08%).

Reference genome. Paired-end reads are aligned to the reference human genome obtained (in the form of a FASTA file) from the UCSC database (GRCh37/hg19).

Read realignment and base recalibration. After removing duplicate reads the reads were re-aligned around the known indels from the 1000-genome sample using the *GenomeAnalysisTKLite-2.3-9* toolkit. The known indels set was obtained from the GATK resource page (42). After performing realignment the base re-calibration step is performed, as is recommended (43, 44). After recalibration, the quality score of

each base becomes more accurate. Known variant position is taken into account to recalibrate the quality score.

Variant calling and computing POLY_{COG}. After performing re-alignment the GenomeAnalysisTKLite-2.3-9 toolkit *UnifiedGenotyper* was used to identify the single nucleotide variants (SNPs) and short indels. The positive allele counts and allele frequencies of the target SNPs were calculated from the Ancient genome VCF files and also from the 1000Genome VCF files using a custom made PERL script (available on request). Variant calling was used to construct a POLY_{COG} score from a list of nucleotides that were found to be genome wide significant ‘hits’ for educational attainment in a recent large-scale meta-analytic GWAS study, which predicted 3.6% of the variance in GCA (14). After excluding those variants that were completely absent from the ancient genomes (likely due to coverage artefacts) the resultant POLY_{COG} score consisted of 130 ‘hits’ that were present to some degree in both the ancient and modern genomes. A second POLY_{COG} score was constructed using data from a GCTA GREML study of GCA and related phenotypes (6). In this study 1,115 SNPs reached GWAS significance, of which 15 were independent signals. Four SNPs were absent from the ancient genomes thus a POLY_{COG} was calculated using 11 SNPs. A third POLY_{COG} score was constructed utilizing a technique developed in (18, 19), employing only the nine GWAS hits from (14) that were in close linkage disequilibrium (linkage cut-off $r \geq 0.8$, 500kb linkage window) with ‘hits’ predicting educational attainment across two other large GWAS studies (6, 12). Linkage was determined using the NIH *LDLink* program (45) with the 1000 Genomes Phase3 CEU population as a reference group. These are presented in Table 2. By focussing on only the smaller numbers of linked replicates, the third POLY_{COG} score was developed as a

means of negating the likely high numbers of false positive SNPs present in larger POLY_{COG} scores. Our approach is based on maximizing the signal to noise ratio of directional selection by focusing on the GWAS hits with the highest significance (or replication rate across publications), as opposed to maximizing the amount of variance explained, which instead is the aim of the classical, within population GWAS design.

Table 2.

Nine linked replicated SNPs with linkage disequilibrium (D') and R^2 coefficients.

<i>Publication</i>	<i>Index SNP</i>	<i>Publication SNP</i>	<i>Linked SNP source</i>	<i>D'</i>	<i>R²</i>
Davies et al., 2016	rs12042107_C	rs1008078_C	Okbay et al., 2016	1	0.8
Rietveld et al., 2013	rs11584700_G	rs11588857_A	Okbay et al., 2016	1	0.94
Rietveld et al., 2013	rs4851266_T	rs12987662_A	Okbay et al., 2016	1	1
Davies et al., 2016	rs13086611_T	rs148734725_A	Okbay et al., 2016	1	1
Davies et al., 2016	rs11130222_A	rs11712056_T	Okbay et al., 2016	1	0.98
Davies et al., 2016	rs55686445_C	rs62263923_G	Okbay et al., 2016	1	0.98
Davies et al., 2016	rs12553324_G	rs13294439_C	Okbay et al., 2016	1	0.98
Davies et al., 2016	rs4799950_G	rs12969294_G	Okbay et al., 2016	1	0.92
Rietveld et al., 2013	rs9320913_A	rs9320913_A	Okbay et al., 2016	1	1

Analysis. Statistical analysis was conducted using R v. 3.3.2 (46). In order to test our hypothesis that POLY_{COG} had different proportions between the two populations against the null hypothesis that there would be no differences, we used Fisher's Exact Test and χ^2 tests, since the data are categorical (positive vs. negative allele/ancient vs. modern population). At the same time, the contingency table dealt with unequal representation of genomes for each SNP within the ancient group (i.e. some SNPs were called if they were present in only one individual) by incorporating this information (each SNP is assigned a weight proportional to the number of genomes in which the SNP was called) Fisher's Exact Test was preferred over the χ^2 Test because it allows exact calculation of the deviation from the null hypothesis, rather than relying on an approximation. An alternative to Fisher's Exact Test is the log-likelihood ratio *G*-Test, which is employed here as an additional test of significance. This was implemented using the R package *DescTools* (47). Analyses were also run for the two smaller POLY_{COG} (11 and 9 SNPs) using two unconditional tests (considered more powerful alternatives), Barnard's (48, 49) and Boschloo's Tests (50), utilizing the R package *Exact* (51). A second analysis was carried out on a subsample of 66 ancient genomes for which sample age was known (age range: 1208 to 4457 ybp.). The correlation was computed between individual positive allele counts derived using the 130 SNP POLY_{COG} with genome year, in order to test for change over time. Since on average the ancient genomes had about 30% coverage, carrying out this analysis using the smaller POLY_{COG} would add too much noise and produce unreliable estimates for individual genomes. Two additional genomes for which age data were present (RISE413 and RISE42) were identified as having significantly outlying values of positive allele count based on the outlier-labelling rule (52) because there was only one SNP per genome. For the analysis only genomes with at

least two SNPs were retained. Removing these two outlying genomes also reduced the skew of the regression residual from 1.16 to 0.698.

Refs.

1. Hawks J, Wang ET, Cochran GM, Harpending HC, Moyzis RK (2007) Recent acceleration of human adaptive evolution. *Proc Nat Acad Sci USA* 104(52):20753–20758.
2. McCracken RD (1971) Lactase deficiency: An example of dietary evolution. *Curr Anthropol* 12(4/5):479–517.
3. Bigham A, et al. (2010) Identifying signatures of natural selection in Tibetan and Andean populations using dense genome scan data. *PLOS Genet* 6(9):e1001116
4. Jensen AR (1998) *The g factor: The science of mental ability* (Praeger, Westport).
5. Bouchard Jr TJ (2004) Genetic influence on human psychological traits – a survey. *Curr Dir Psychol Sci* 13(4):148-151.
6. Davies G, et al. (2011) Genome-wide association studies establish that human intelligence is highly heritable and polygenic. *Mol Psychiatry* 16(10):996–1005.
7. Galsworthy MJ, Arden R, Chabris CF (2014) Animal models of general cognitive ability for genetic research into cognitive functioning. *Behavior genetics of cognition*

across the lifespan, eds. Finkel D, Reynolds CA (Springer, New York), pp 257–278.

8. Fernandes HBF, Woodley MA, te Nijenhuis J (2014) Differences in cognitive abilities among primates are concentrated on G: Phenotypic and phylogenetic comparisons with two meta-analytical databases. *Intelligence* 46:311–322.
9. Woodley of Menie MA, Fernandes HBF, Hopkins WD (2015) The more g-loaded, the more heritable, evolvable, and phenotypically variable: Homology with humans in chimpanzee cognitive abilities. *Intelligence* 50:159–163.
10. Geary DC (2005) *The origin of mind: evolution of brain, cognition, and general intelligence* (American Psychological Association, Washington).
11. Cochran G, Harpending H (2009) *The 10,000 year explosion: How civilization accelerated human evolution* (Basic Books, New York).
12. Rietveld CA et al. (2013) GWAS of 126,559 individuals identifies genetic variants associated with educational attainment. *Science* 340(6139):1467–1471.
13. Rietveld CA, et al. (2014) Common genetic variants associated with cognitive performance identified using the proxy-phenotype method. *Proc Natl Acad Sci USA* 111(38):13790–13794.
14. Okbay A, et al. (2016) Genetic variants associated with subjective well-being, depressive symptoms, and neuroticism identified through genome-wide analyses. *Nat Genet* 48(6):624–633.

15. Selzam S, et al. (2016) Predicting educational achievement from DNA. *Mol Psychiatry* doi:10.1038/mp.2016.107.

16. Domingue BW, Belsky DW, Conley D, Harris KM, Boardman JD (2015) Polygenic influence on educational attainment. *AERA Open* 1(3):e13.

17. Allentoft ME, et al. (2015) Population genomics of Bronze Age Eurasia. *Nature* 522(7555):167-174.

18. Kimmel HD (1957). Three criteria for the use of one-tailed tests. *Psychol Bull* 54(4):351-353.

19. Piffer D (2015) A review of intelligence GWAS hits: Their relationship to country IQ and the issue of spatial autocorrelation. *Intelligence* 53:43–50.

20. Woodley of Menie MA, Piffer D, Peñaherrera MA, Rindermann H (2016) Evidence of contemporary polygenic selection on the *Big G* of national cognitive ability: A cross-cultural sociogenetic analysis. *Pers Individ Dif* 102:90–97.

21. Beauchamp JP (2016) Genetic evidence for natural selection in humans in the contemporary United States. *Proc Natl Acad Sci USA* 113(28):7774–7779.

22. Conley D, et al. (2016) Assortative mating and differential fertility by phenotype and genotype across the 20th century. *Proc Natl Acad Sci USA* 113(24):6647–6652.

23. Woodley of Menie MA, Schwartz JA, Beaver KM (2016) How cognitive genetic factors influence fertility outcomes: A mediational SEM analysis. *Twin Res Hum Genet* 19(6):628–637.
24. Kong A et al. (2017) Selection against variants in the genome associated with educational attainment. *Proc Natl Acad Sci USA* Doi:10.1073/pnas.1612113114.
25. Stearns SC, Byars SG, Govindaraju DR, Ewbank D (2010) Measuring selection in contemporary human populations. *Nat Rev Genet* 11(9):611–622.
26. Piffer D (2013) Correlation of the COMT Val158Met polymorphism with latitude and a hunter-gatherer lifestyle suggests culture-gene coevolution and selective pressure on cognition genes due to climate. *Anthropol Sci* 121(3): 161-171
27. Trzaskowski M, et al. (2014) Genetic influence on family socioeconomic status and children's intelligence. *Intelligence* 42:83–88.
28. Clark G (2007) *Farewell to Alms: A brief economic history of the world*. (Princeton University Press, Princeton).
29. Clark G (2014) *The son also rises: Surnames and the history of social mobility*. (Princeton University Press, Princeton).
30. Lynn R, Van Court M (2004) New evidence of dysgenic fertility for intelligence

in the United States. *Intelligence* 32(2):193–201.

31. Lynn R (1996) *Dysgenics: Genetic deterioration in modern populations*. (Praeger, Connecticut).

32. Rindermann H, Woodley MA, Stratford J (2012) Haplogroups as evolutionary markers of cognitive ability. *Intelligence* 40(4):362–375.

33. Hawks J (2011) Selection for smaller brains in Holocene human evolution. *ArXiv*:1102.5604

34. Pietschnig J Penke L Wicherts JM Zeiler M Voracek M (2015) Meta-analysis of associations between human brain volume and intelligence differences: How strong are they and what do they mean? *Neurosci Biobehav Rev* 57:411–432.

35. Deary IJ Cox SR Ritchie SJ (2016) Getting Spearman off the skyhook: One more in a century (since Thomson, 1916) of attempts to vanquish *g*. *Psychol Inq* 27(3), 192–199.

36. Bush WS, Moore JH (2012) Chapter 11: Genome-Wide Association Studies. *PLoS Comput Biol* 8(12): e1002822.

37. Hsu SDH (2014) On the genetic architecture of intelligence and other quantitative traits. *ArXiv*:1408.3421

38. Scutari, M, Mackay I, Balding D (2016) Using genetic distance to infer the accuracy of genomic prediction. *PLOS Genet* 12(9):e1006288
39. Cronbach LJ, Meehl PE (1955) Construct validity in psychological tests. *Psychol Bull* 52(4):281-302.
40. The 1000 Genomes Project Consortium. (2012) An integrated map of genetic variation from 1,092 human genomes. *Nature* 491(7422):56–65.
41. Hartl DL, Clark AG (1989) Principles of population genetics. 2nd Ed. (Sinauer Associates, Sunderland).
42. McKenna A, et al. (2010) The Genome Analysis Toolkit: A MapReduce framework for analyzing next-generation DNA sequencing data. *Genome Res* 20(9):1297–1303.
43. DePristo MA, et al. (2011) A framework for variation discovery and genotyping using next-generation DNA sequencing data. *Nature Genet* 43(5):491–498.
44. Van der Auwera GA, et al. (2013) From FastQ data to high-confidence variant calls: The genome analysis toolkit best practices pipeline. *Curr Protoc Bioinformatics* 43:11.10.1-11.10.33.
45. Machiela MJ, Chanock SJ (2015) LDlink: a web-based application for exploring population-specific haplotype structure and linking correlated alleles of possible functional variants. *Bioinformatics* 31(21):3555–3557.

46. R Core Team (2016) *R: A language and environment for statistical computing*. (R Foundation for Statistical Computing, Vienna).
47. Signorell A, et al. (2016) DescTools: Tools for descriptive statistics. R package version 0.99.18.
48. Barnard GA (1945) A new test for 2×2 tables. *Nature* 156(3974):783–784.
49. Barnard GA (1947) Significance tests for 2×2 tables. *Biometrika* 34(1/2):123-138.
50. Boschloo RD (1970) Raised conditional level of significance for the 2X2-table when testing the equality of two probabilities. *Stat Neerl* 24:1–35.
51. Calhoun P (2016) Exact: Unconditional exact test. R package version 1.7. <https://CRAN.R-project.org/package=Exact>
52. Hoaglin DC, Iglewicz B, Tukey JW (1986) Performance of some resistant rules for outlier labeling. *J Am Stat Assoc* 81(396):991–999.