

# Whole exome sequencing reveals a mutation in *ARMC9* as a cause of mental retardation, ptosis and polydactyly

Anjana Kar<sup>1,2</sup>, Shubha R Phadke<sup>3</sup>, Aneek Das Bhowmik<sup>2</sup>, Ashwin Dalal<sup>1,4\*</sup>

1) Diagnostics Division, Centre for DNA Fingerprinting and Diagnostics, Hyderabad, India;

2) Graduate Studies, Manipal University, Manipal, India;

3) Department of Medical Genetics, Sanjay Gandhi Postgraduate Institute of Medical Sciences, Lucknow, India;

4) Department of Medical Genetics, Kasturba Medical College, Manipal University, Manipal, India.

Conflict of Interest: The authors declare no conflict of interests.

## # Correspondence to:

Dr Ashwin Dalal

Head, Diagnostics Division

Centre for DNA Fingerprinting and Diagnostics

4-1-714, Tuljaguda Complex Mozamzahi Road, Nampally

Hyderabad Telangana 500001 INDIA

Ph. 040-24749335

Fax: 040 24749448

email: ashwindalal@gmail.com, adalal@cdfd.org.in

**Running title:** Exome sequencing reveals cause of mental retardation, ptosis and polydactyly syndrome.

**Key Words:** Intellectual disability, *ARMC9*, Exome sequencing, Homozygosity mapping, Splice site assay.

## ABSTRACT

Intellectual disability (ID) refers to deficits in mental abilities, social behaviour and motor skills to perform activities of daily living as compared to peers. Numerous genetic and environmental factors may be responsible for ID. We report on identification of a novel gene for syndromic ID, using homozygosity mapping followed by exome sequencing in a family with mental retardation, ptosis and polydactyly. The analysis revealed a synonymous mutation c.879G>A which leads to a splicing defect in *ARMC9* gene. The variant is present in conserved region of ARM domain of *ARMC9* protein which is predicted to form a platform for protein interaction. This domain is likely to be altered in patients due to splicing defect caused by this synonymous mutation. Our study was helpful in elucidation of molecular basis of mental retardation, ptosis and polydactyly phenotype and addition of *ARMC9* to group of genes leading to syndromic ID.

## INTRODUCTION

Intellectual disability has a prevalence of 1-3% in population and can result from heterogeneous causes like environmental/nutritional effect, chromosomal or monogenic causes<sup>1</sup>. More than 230 genes have been reported to be involved in causation of syndromes of intellectual disability. Mental retardation, ptosis and polydactyly<sup>2</sup> are a distinctive combination of clinical features reported by us. This is a rare type of intellectual disability syndrome, reported only in a single consanguineous Muslim family from India, where three individuals were affected<sup>2</sup>.

Intellectual disability, short stature and polydactyly was suggestive of possibility of Bardet Biedl syndrome (BBS, MIM: 209900), but absence of obesity, renal abnormality, retinopathy and normal sexual development were some of the phenotypes that were different from BBS. Another possibility

was 3MC syndrome, which was formally known as Carnevale syndrome (MIM: 265050), however patients did not had hip dysplasia, cryptorchidism and abdominal muscle defect. For identification of candidate gene in this family we have employed homozygosity mapping followed by exome sequencing in all the three affected siblings with mental retardation, ptosis and polydactyly phenotype.

## MATERIALS AND METHODS

### Patients Details

We described the clinical features in three affected siblings born out of consanguineous union, characterized as mental retardation, ptosis and polydactyly phenotype<sup>2</sup>. The proband showed severe intellectual disability (ID), bilateral ptosis, downslanting palpebral fissures, hypertelorism, round face, high arched palate, clinodactyly, tapering of fingers and

hypermobile patellae. He also had joint laxity in the metacarpophalangeal and interphalangeal joints in hands and short stature. Female sibling was also proportionately short with stocky build. She had moderate ID, ptosis in right eye, pointed chin, bilateral post axial polydactyly with joint laxity. The third sibling had marked joint laxity similar to proband, moderate ID, bilateral ptosis and bilateral post axial polydactyly (Table I). We collected blood samples from all affected siblings and both parents after informed consent. This study was approved by the Institutional Ethics Committee.

**Table I: Clinical Features of patients with Mental retardation, ptosis and polydactyly syndrome.**

Phenotype	II- 1	II-2	II-3
Intellectual disability	severe	Moderate	Severe
Ptosis	Bilateral	Right Eye	Bilateral
Polydactyly (Hand)	-	+	-
Polydactyly (Feet)	-	+	+
Clinodactyly	+	-	-
Downslanting palpebral fissure	+	+	+
Short Stature	+	+	+
Stocky build	NA	+	NA
Pointed chin	-	+	-
Hypertelorism	+	NA	-
Hypermobile patellae	+	NA	NA
Joint laxity in metacarpophalangeal and interphalangeal joint	+	+	+
Round face	+	-	+
Tapering fingers	+	NA	-NA
Flat Feet	-	+	-

## Genetic Testing

Genomic DNA from all affected and unaffected family members was extracted from whole blood. SNP array analysis in all three affected individuals was performed by using Illumina Human-CytoSNP-12 v.2.1 DNA Analysis BeadChip Kit (Illumina Inc., San Diego, CA). Analysis of array data was performed using Genome studio software. Size threshold for analysis was kept as 200 kb for deletion, 500 kb for duplication and 1 Mb for homozygous regions. Genomic Oligoarray and SNP evaluation tool (v 3.0) ([http://firefly.ccs.miami.edu/cgi-bin/ROH/ROH\\_analysis\\_tool.cgi](http://firefly.ccs.miami.edu/cgi-bin/ROH/ROH_analysis_tool.cgi)) was used for detection of known disease causing OMIM genes in the common homozygous regions.

Exome sequencing was performed in all three affected sibs. Agilent SureSelectXT V5 exome capture kit (Agilent Technologies, Santa Clara, CA) was used for preparation of exome library of using ~3 µg of genomic DNA. Exome library

was sequenced to mean 100X coverage on Illumina HiSeq2000 sequencing platform. Alignment to human reference genome (GRCh37/hg19) and variant calling were performed using NEXTGENe v.2.3.4.4 and Annovar<sup>3</sup>, respectively. Variants with minor allele frequency of >0.01 in 1000 Genome project, EVS (Exome Variant Server), ExAC databases and in-house database were excluded in the study. Only nonsense, non-synonymous, splice site variants, synonymous splice site variants, insertion and deletion variants that affect coding regions of gene were used for interpretation. PCR was performed using gene specific primer set (listed in Supplementary Table SI) followed by Sanger sequencing on ABI3130 Genetic analyzer (Life Technologies, Carlsbad, CA) following the manufacturer's protocol in control, parents, unaffected sib and affected sib to validate variants identified on exome sequencing.

## In vivo analysis of mutation at splice site

An observed variation was evaluated for splicing defect using pCAS2<sup>4</sup> minigene construct. Wild type (ARMC9\_Wt) and mutant (ARMC9\_Mt) constructs were created by PCR amplification from control and patient sample respectively followed by cloning them in *BamH* I and *Mlu* I restriction site of pCAS2 vector. Recombinant constructs as well as pCAS2 (as control) were transfected into COS7 cells using Lipofectamine 2000 (Invitrogen, Carlsbad, CA) according to the manufacturer's instructions. Cells were harvested after 18 hr of transfection and total RNA was extracted from each transfectant using RNeasy Mini Kit (Qiagen, Hilden, Germany), as per the manufacturer's instruction. Total RNA was subjected to RT PCR using SuperScript III (Invitrogen, Carlsbad, CA) followed by plasmid specific amplification (P1 and P2 primer) and evaluated on 2 % agarose gel. Appropriate bands were purified using QIAquick Gel Extraction Kit (Qiagen, Hilden, Germany) and subjected to Sanger sequencing using on ABI3130 Genetic analyzer (Life Technologies, Carlsbad, CA).

## RESULTS

### Homozygosity mapping and Exome sequencing

We did not identify any significant copy number variations in any of the affected siblings. Regions of loss of heterozygosity (LOH) greater than 1 MB shared by affected siblings were identified on chromosome 2, 7, 10 and 14 (Supplementary Table SII), harbouring 228 Refseq genes and including 81 OMIM genes. The largest region of shared homozygosity was on chromosome 2q of 11 Mb, harbouring 141 genes. None of the genes in the shared regions were found to be associated with intellectual disability, ptosis and polydactyly occurring together. Whole exome sequencing was performed for all three affected siblings. Mapping and alignment to human reference genome was performed using NEXTGENe v.2.3.4.4 software (SoftGenetics, LLC, PA). Variants were filtered for minor allele frequency (MAF) ≤ 0.01 in 1000 Genome project, EVS, ExAC and in-house database of 30 Indian exomes.

**Table II: List of common variants in three affected patients II-1, II-2 and III-3**

S.No	Gene	Position	Variant	Protein variant	Gene Function
1	ARMC9	Chr2: 232104754	c.879G>A	p.Thr293Thr	Armadillo repeat containing 9 May be involved in microtubule dynamics
2	UGT1A7	Chr2: 234591237	c.654A>C	p.Leu218Phe	UDP Glucuronosyltransferase family 1 member A7 Enzyme of Glucuronidation pathway
3	ZFPM1	Chr16: 88599697	c.1331_1339delinsCCC	p.Phe446_449Leu	Zinc finger protein Multitype 1 Partner of hematopoietic transcription factor GATA
4	SIGLEC12	Chr19: 52004791	c.193delinsAG	p.Ala66GlyFs*50	Sialic acid binding immunoglobulin like lectin 12 Cell surface protein of Ig superfamily
5	LILRB2	Chr19: 54783375	c.483A>C	p.Glu161Asp	Leukocyte immunoglobulin like receptor subfamily B member 2

Mutation databases such as HGMD and Clinvar were also checked for presence of reported pathogenic variants in affected individuals. After filtering of variants, two candidate variants (c.654A>C in *UGT1A7* and c.879G>A in *ARMC9*) present in shared homozygous region of 11 Mb on Chromosome 2 were studied further (Supplementary Table SIII and Table II).

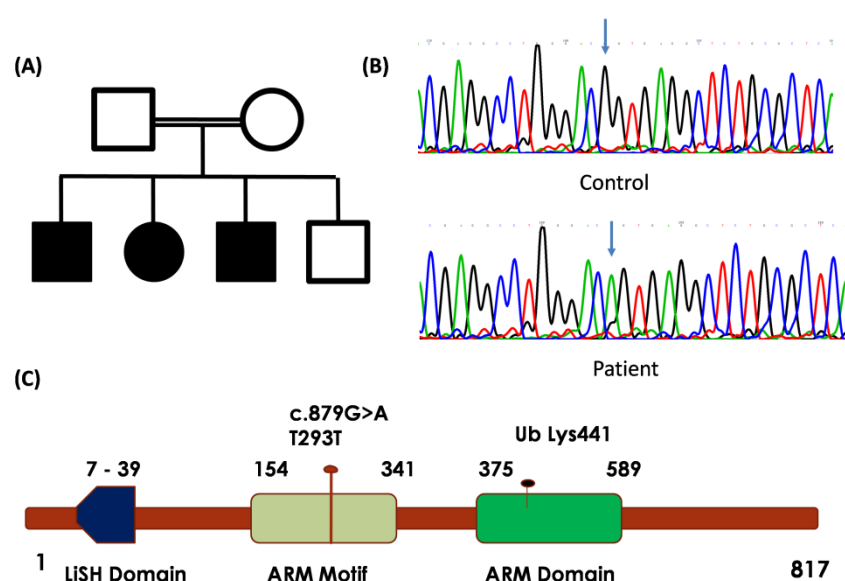
The variant in *UGT1A7* was predicted to be pathogenic but the function of *UGT1A7* gene in glucuronidation pathway did not appear to be related with the phenotype in the affected siblings. The variant *ARMC9* c.879G>A, on chromosome 2q37.1, was found to be homozygous in all affected siblings, present in shared homozygous region, absent in 1000 Genome database, EVS, ExAC, in-house database of 50 exomes and predicted to be damaging by various pathogenicity prediction software. This variant is a synonymous variant in the last base of exon 9 of *ARMC9* gene and was predicted to affect splicing

by splice site prediction tools such as Human Splice Finder<sup>5</sup> and MutPred Splice<sup>6</sup>. Sanger sequencing confirmed presence of homozygous c.879G>A mutation in all three affected siblings (Figure 1 B). The variant was found to be heterozygous in both parents and absent in unaffected sibling.

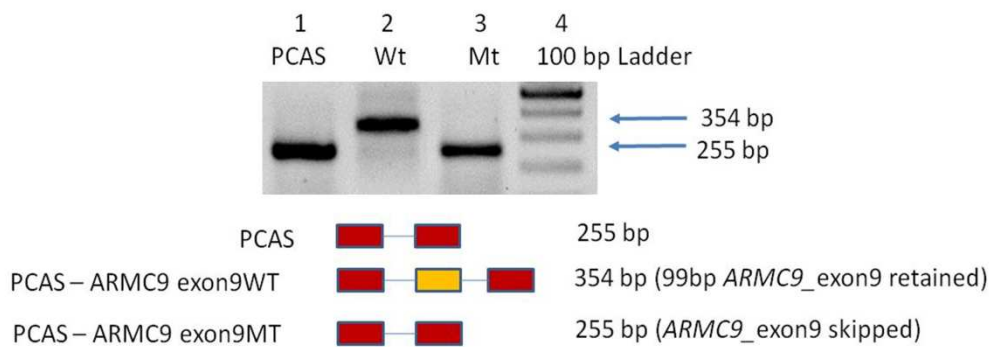
#### Characterization of mutation by Minigene assay for splicing defect

Since *ARMC9* is not expressed in blood, in vivo characterization of this mutation was done to determine whether it causes a defect in mRNA splicing using pCAS2 minigene. PCR amplification of pCAS2 minigene specific primer (P1 and P2) from cDNA prepared using all transfectants were checked on 2% agarose gel, which revealed presence of 255 bp band in PCAS (control plasmid) and *ARMC9*\_Mt whereas *ARMC9*\_Wt had 354 bp fragment (Figure 2).

These results indicate that the mutation is likely to lead to skipping of exon during splicing event (Figure 2). To confirm



**Figure 1: Mutation in ARM domain of *ARMC9* gene in patients with mental retardation, ptosis and polydactyly syndrome.** (A) Pedigree of consanguineous family with three affected offspring affected with mental retardation, ptosis and polydactyly phenotype. (B) Sanger sequencing chromatogram of Control and patient showing c.879G>A indicated by arrows. (C) Schematic illustration of *ARMC9* with location of mutation c.879G>A.



**Figure 2: Molecular characterization of c.879G>A mutation.** Results of RT-PCR performed on RNA isolated from transfected COS7 cells. Lane 1: empty pCAS2 Vector, lane 2 pCAS\_ARMC9\_WT vector, lane 3: pCAS\_ARMC9\_MT vector and lane 4: 100 bp ladder.

the results from RNA assay, sequencing of specific bands from RT-PCR for ARMC9\_pCAS\_Wt and ARMC9\_pCAS\_Mt was done by Sanger sequencing, which revealed deletion of 99 base pairs of exon 9 of *ARMC9* gene (Supplementary Figure 1). This result confirms that synonymous mutation c.879G>A leads to abolition of splice site and leads to skipping of exon 9 of *ARMC9* which may result in in-frame deletion of 33 amino acids (exon 9) from *ARMC9* in patients.

## DISCUSSION

We elucidated the molecular basis in three siblings who were diagnosed with mental retardation, ptosis and polydactyly phenotype, using homozygosity mapping and whole exome sequencing. Whole exome sequencing analysis revealed a homozygous synonymous splice site variant in *ARMC9* gene (c.879G>A) in these patients. This variant leads to abolition of splice site, which leads to skipping of exon 9 during splicing event.

Intellectual disability in combination with other clinical features represents a heterogeneous group of genetic disorders with large number of causal genes<sup>7</sup>. Combination of homozygosity mapping and exome sequencing has allowed us to examine small family with few affected individuals, particularly in the case of recessive mode of inheritance and consanguinity, to efficiently limit the number of candidate genes to be studied and establish new disease-gene association.

*ARMC9* was first reported in cDNA analysis of human fetal whole brain, which revealed expression of several new long coding transcripts. One of them was *ARMC9*, which was reported as KIA1868<sup>8</sup>. *ARMC9* is also known as LisH domain containing protein *ARMC9*, NS21<sup>9</sup>, Melanoma/melanocyte specific tumor antigen KU-MEL-1<sup>9</sup> and KIAA1868. *ARMC9* is a lesser known protein of 817 amino acids, containing N-terminal LisH (Lissencephaly type 1like homology) domain and C-terminal ARM (Armadillo repeats) motifs. Proteins containing LisH domains are known to be involved in microtubule dynamics and cell division<sup>10</sup>. Armadillo (ARM) repeats are characterized as repeating, 42 amino acid motifs, composed of three  $\alpha$  helices. Although ARM repeat containing proteins do not share sequence similarity, they share a similar structure<sup>11</sup>. Multiple ARM repeats fold together to form a

super-helix structure, which acts as platform for interaction with protein partners. ARM containing proteins are conserved through eukaryotes and are involved in diverse cellular functions such as signal transduction, cell migration and proliferation and cytoskeletal regulation<sup>12,13</sup>.

We proceeded further to investigate *ARMC9* function based on homology. We could not detect clear homolog but BLAST (<https://blast.ncbi.nlm.nih.gov/Blast.cgi?PROGRAM>) and InterProScan<sup>14</sup> protein domain homology searches showed that there are two predicted ARM domains (154-341 and 375-584) at the C-terminus, in addition to N-Terminal LisH domain. The tandem ARM repeat domains of *ARMC9* may fold together as a series of tandem helices forming a super-helix that creates a surface or groove for protein interaction similar to that of the Beta catenin (CTNNB1) ARM repeat structure. Yeast two hybrid assay has shown that *ARMC9* interacts with Siah E3 ubiquitin protein ligase 1 (SIAH1) and CKLF like MARVEL transmembrane domain containing 5 (CMTM5)<sup>15</sup>, which indicates that *ARMC9* may be involved in ubiquitination pathway like *ARMC8*<sup>16</sup>.

To study effect of mutation in splicing, the best method is analysis of patient RNA for respective gene, but *ARMC9* has little or no expression in adult tissue.<sup>9</sup> Thus we proceeded with alternate method for assay of splicing defect using PCAS2 miningene system. Synonymous splicing defect mutation c.879G>A, which leads to skipping of exon 9 in *ARMC9* gene will lead to in-frame deletion of few ARM repeats in ARM domain (deletion of 260-293 aa), that is likely to influence protein binding capabilities of *ARMC9*. It is known that armadillo repeat containing proteins can have more than one function in cells, potentially interacting with different protein partners<sup>17</sup>.

Several studies on another ARM contacting protein Beta catenin (CTNNB1) indicate that mutations in *CTNNB1* can lead to wide range of neurodevelopmental disorders (ID with syndromic features)<sup>18,19</sup>. Studies on mouse mutant that carries mutation in armadillo repeat of Beta catenin (*CTNNB1*) demonstrate reduced affinity for membrane associated cadherins<sup>20</sup>. Similarly mutation in *APC2*, an ARM containing protein involved in neural development, is associated with Sotos syndrome 3 (MIM: 61719) involving ID, hyperactive behaviour with macrocephaly<sup>21</sup>. Thus *ARMC9* also is likely to



be involved in neurodevelopmental process and its perturbation may lead to syndromic ID.

In summary, here we report on a synonymous splice site variant in *ARMC9* as a cause of mental retardation, ptosis and polydactyly phenotype. The variant affects conserved ARM repeats at the C terminus and is likely to disrupt its interaction with other protein partners. *ARMC9* joins an important group of highly conserved ARM repeat containing proteins associated with intellectual disability which includes Beta catenin (*CTNNB1*), *APC2*. The exact nature and essential role of *ARMC9* remains to be fully characterized, however these results further expand our understanding of molecular genetic basis of intellectual disability and facilitate better counselling of patients.

## CONFLICT OF INTEREST

The authors declare no conflict of interest.

## ACKNOWLEDGEMENTS

We are grateful to the family for their support during this study. We acknowledge MedGenome (Cochin, Kerala, India) for performing exome sequencing. We also acknowledge the funding support from Department of Biotechnology, Government of India, Grant Number: BT/PR3193/MED/12/521/2011 and Indian Council of Medical Research (BMS 54/2/2013).

Supplementary information accompanies this paper on European Journal of Human Genetics website.

## Web resources

1000 Genomes – <http://www.1000genomes.org/>  
 Exome Variant Server – <http://evs.gs.washington.edu/EVS/>  
 ExAC – <http://exac.broadinstitute.org/>  
 dbSNP – <http://www.ncbi.nlm.nih.gov/SNP/>  
 ClinVar – <http://www.ncbi.nlm.nih.gov/clinvar/>  
 OMIM – <http://www.omim.org/>  
 HGMD – <http://www.biobase-international.com/products/hgmd>  
 Integrative Genomics Viewer (IGV) – <http://www.broadinstitute.org/igv/>  
 SIFT – <http://sift.jcvi.org/>  
 Polyphen2 – <http://genetics.bwh.harvard.edu/pph2/>  
 HANSA – <http://www.cdfd.org.in/HANSA/>

## REFERENCES

1. Maulik PK, Mascarenhas MN, Mathers CD, Dua T, Saxena S. Prevalence of Intellectual disability: a meta analysis of population-based studies. *Res Dev Disabil* 2011; **32**: 419 – 436.
2. Panigrahi I, Phadke SR, Agarwal SS. Mental retardation, ptosis and polydactyly: a new autosomal recessive syndrome?. *Clinical Dysmorphology* 2002; **11**: 289 – 292.
3. Wang K, Li M, Hakonarson H. ANNOVAR: functional annotation of genetic variants from high-throughput sequencing data. *Nucleic Acids Res* 2010; **38** (16): e164.
4. Tournier I, Vezain M, Martins A, et al. A large fraction of unclassified variants of the mismatch repair genes MLH1 and MSH2 is associated with splicing defects. *Hum Mutat* 2008; **29**: 1412 – 1424.
5. Desmet FO, Hamroun D, Lalande M, Collod-Beroud G, Claustres M, Beroud C. Human Splicing Finder: an online bioinformatics tool to predict splicing signals. *Nucleic Acids Res*. 2000; **37**(9): e67 – e67.
6. Mort M, Sterne-Weiler T, Li B, et al. MutPred Splice: machine learning-based prediction of exonic variants that disrupt splicing. *Genome biology* 2014; **15**: 1.
7. Vissers LELM, Gilissen C, Veltman JA. Genetic studies in intellectual disability and related disorders. *Nature Reviews* 2016; **17**: 9 – 18.
8. Nagase T, Nakayama M, Nakajima D, Kikuno R, Ohara O. Prediction of the coding sequences of Unidentified human Genes. XX. The Complete sequence of 100 new cDNA clones from Brain which code for large proteins *in vitro*. *DNA Res* 2001; **8**: 85-95.
9. Kuniwa Y, Fujita T, Akada M et al. Tumor antigens isolated from a patient with Vitiligo and T-cell-infiltrated Melanoma. *Cancer Research* 2001; **61**: 7900 – 7907.
10. Gerlitz G, Darhin E, Giorgio G, Franco B, Reiner O. Novel functional features of the Lis-H domain. *Cell Cycle* 2005; **4**: 1632 – 1640.
11. Tewari R, Bailes E, Bunting KA, Coates JC. Armadillo repeat protein functions: questions for little creatures. *Trends in Cell Biology* 2010; **20**: 470-481.
12. Coates JC. Armadillo repeat proteins: beyond the animal kingdom. *Trends Cell Biol* 2003; **13**: 463 – 471
13. Valenta T, Hausmann G, Basler K. The Many faces and function of  $\beta$ -catenin. *EMBO* 2012; **31**(12): 2714 – 2736.
14. Zdobnow EM, Apweiler R. InterProScan – an integration platform for the signature – recognition methods in InterPro. *Bioinformatics* 2001; **17**(9): 847 – 848.
15. Rolland T, Tasan M, Charlotteaux B, et al. A proteome scale map of the human interactome network. *Cell* 2014; **159**(5): 1212 – 1226.
16. Tomaru K, Ueda A, Suzuki T et al. Armadillo repeat containing 8 $\alpha$  Binds to HRS and promotes HRS interaction with Ubiquitinated proteins. *The Open Biochemistry Journal* 2010; **4**: 1 – 8.
17. Onoufriadi A, Shoemark A, Munye MM, et al. Combined exome and whole genome sequencing identifies mutations in *ARMC4* as a cause of primary ciliary dyskinesia with defects in the outer dynein arm. *J Med Genet* 2014; **51**: 61 – 67.
18. Ligt J, Willemsen MH, van Bon BWM, et al. Diagnostic Exome sequencing in persons with severe intellectual disability. *N Engl J Med* 2012; **367**: 1921 – 1929.

19. Winczewska-Wiktor A, Badura-Stronka M, Monies-Nowicka A *et al.* A de novo CTNNB1 nonsense mutation associated with syndromic atypical hyperekplexia, microcephaly and intellectual disability: a case report. *BMC neurology* 2016; **16.1b:1**.
20. Tucci V, Kleefstra T, Hardy A, *et al.* Dominant  $\beta$ -catenin mutations cause intellectual disability with recognizable syndromic features. *J Clin Invest* 2014; **124**: 1468 – 1482.
21. Almuriekhi M, Shintani T, Fahiminiya S, *et al.* Loss of Function Mutation in *APC2* Causes Sotos Syndrome Features. *Cell Reports* 2015; **10**: 1585 – 1589.