

A Bayesian Heteroscedastic GLM with Application to fMRI Data with Motion Spikes

Anders Eklund^{a,b,c}, Martin A. Lindquist^d, Mattias Villani^{*a}

^a*Division of Statistics & Machine Learning, Department of Computer and Information Science, Linköping University, Linköping, Sweden*

^b*Division of Medical Informatics, Department of Biomedical Engineering, Linköping University, Linköping, Sweden*

^c*Center for Medical Image Science and Visualization (CMIV), Linköping University, Linköping, Sweden*

^d*Department of Biostatistics, Johns Hopkins University, Baltimore, USA*

Abstract

We propose a voxel-wise general linear model with autoregressive noise and heteroscedastic noise innovations (GLMH) for analyzing functional magnetic resonance imaging (fMRI) data. The model is analyzed from a Bayesian perspective and has the benefit of automatically down-weighting time points close to motion spikes in a data-driven manner. We develop a highly efficient Markov Chain Monte Carlo (MCMC) algorithm that allows for Bayesian variable selection among the regressors to model both the mean (i.e., the design matrix) and variance. This makes it possible to include a broad range of explanatory variables in both the mean and variance (e.g., time trends, activation stimuli, head motion parameters and their temporal derivatives), and to compute the posterior probability of inclusion from the MCMC output. Variable selection is also applied to the lags in the autoregressive noise process, making it possible to infer the lag order from the data simultaneously with all other model parameters. We use both simulated data and real fMRI data from OpenfMRI to illustrate the importance of proper modeling of heteroscedasticity in fMRI data analysis. Our results show that the GLMH tends to detect more brain activity, compared to its homoscedastic counterpart, by allowing the variance to change over time depending on the degree of head motion.

Keywords: Bayesian, fMRI, Heteroscedastic, MCMC, Head motion, Motion spikes.

1. Introduction

Functional magnetic resonance imaging (fMRI) is a non-invasive technique that has become the de facto standard for imaging human brain function in both healthy and diseased populations. The standard approach for analyzing fMRI data is to use the general linear model (GLM), proposed by Friston et al. [12]. The standard GLM has been extremely successful in a large number of empirical studies, but relies on a number of assumptions, including linearity, independency, Gaussianity and homoscedasticity (constant variance). Much work has been done to relax the assumption of independent errors, and several alternative noise models have been proposed [11, 38, 19, 18, 7]. In addition, it has also been investigated whether results are improved by using a Rician noise model [15, 1, 21, 32], instead of a Gaussian. While heteroscedastic models exist for group analyses [2, 36, 5], the homoscedasticity assumption for single subject analysis has received little attention. Luo and Nichols [20] used the Cook-Weisberg test for homoscedasticity to detect problematic voxels, but did not propose a heteroscedastic model to handle these. Diedrichsen and Shadmehr [6] claim that the homoscedasticity assumption is often violated in practice due to head motion,

and propose an algorithm that estimates the noise variance separately at each time point. The estimated variances are then used to perform weighted least squares regression. The aim of this study is to further explore the appropriateness of the homoscedasticity assumption for single subject fMRI analysis, and evaluate the effects of deviations from it.

1.1. Is fMRI noise heteroscedastic?

Consider a simple simulation where actual head motion is repeatedly applied to a single volume from an fMRI dataset, to generate a new 4D fMRI dataset where all the signal variation comes from simulated motion. Even if motion correction is applied to the dataset, the dataset will still contain motion related signal variation [14], due to the fact that the interpolation mixes voxels with low and high signal intensity (especially at the edge of the brain, and at the border between different tissue types). It is therefore common to include the estimated head motion parameters in the design matrix, to regress out any motion related variance that remains after the motion correction, and to also account for spin-history artifacts. It is also common to include the temporal derivative of the head motion parameters, to better model motion spikes. Figure 1 shows a single time series from an fMRI dataset with simulated motion, before and after motion correction, and one of

*Corresponding author

Email address: mattias.villani@liu.se (Mattias Villani*)

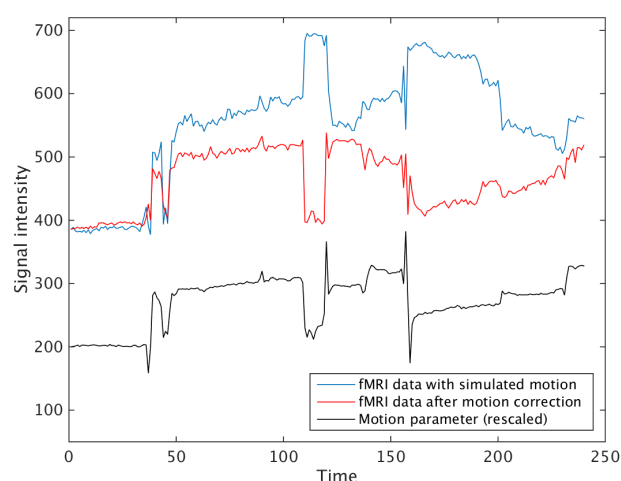


Figure 1: A single time series from a simulated fMRI dataset, before and after motion correction. Note that the motion corrected data still has a high signal variance, which is correlated with the head motion.

the head motion parameters. The selected voxel is at the border between white and gray matter. Figure 2 shows three residual time series calculated using three different design matrices (and ordinary least squares regression), the first containing only an intercept and time trends, the second also containing motion covariates, and the third also containing the temporal derivative of the head motion. It is clear that using the estimated head motion as additional covariates removes most of the motion related variance, but not all of it. The residual time series still contain effects of a motion spike, which makes the noise heteroscedastic. It should also be stressed that real fMRI data are far more complicated, for example due to the fact that each fMRI volume is sampled one slice at a time, thus potentially giving rise to so-called 'spin-history' artifacts which can further embed motion-related noise into the fMRI data.

1.2. Modeling the heteroscedasticity

We propose a Bayesian heteroscedastic extension of the GLM, which uses covariates for both the mean and variance, and also incorporates an autoregressive noise model. We develop highly efficient Markov Chain Monte Carlo (MCMC) algorithms for simulating from the joint posterior distribution of all model parameters. Allowing for heteroscedasticity, where the noise variance is allowed to change over time, has the effect of automatically discounting scans with large uncertainty when inferring brain activity or connectivity. One way of thinking of this effect is in terms of weighted least squares estimation, where the optimal weights are learned from the data.

1.3. Is fMRI noise heteroscedastic in all voxels?

Figure 3 shows three residual time series for a voxel in gray matter (close to the voxel shown in Figure 2).

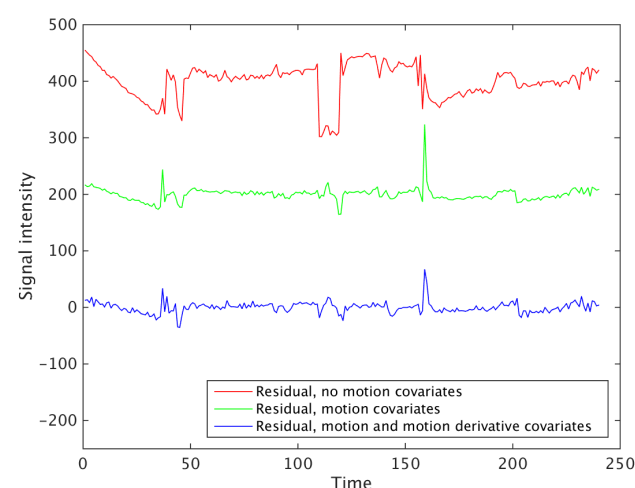


Figure 2: Residual time series obtained after fitting models with three different design matrices. The first design matrix only contains covariates for the intercept and time trends (4 covariates in total). The second design matrix also contains head motion covariates (10 covariates in total), and the third design matrix also contains the temporal derivative of the head motion (16 covariates in total). For visualization purposes, a mean of 200 was added to the green residual, and a mean of 400 was added to the red residual. Note that a motion spike is still present in the green and the blue residual, making the noise heteroscedastic.

Clearly, this voxel has a very low correlation with the simulated motion, and the residuals are not heteroscedastic. It is therefore not optimal to use the same weights in all voxels. Compared to the work by Diedrichsen and Shadmehr [6], our Bayesian approach independently estimates a heteroscedastic model for each voxel, instead of using variance scaling parameters that are the same for all voxels. Furthermore, Diedrichsen and Shadmehr [6] used a fix autoregressive (AR) model for the noise (AR(1) + white noise with the AR parameter fixed to 0.2, as in the SPM software package), while we estimate an AR(k) model in each voxel. The fixed AR(1) model used by SPM has been shown to perform poorly [7], especially for short repetition times made possible with recently developed MR scanner sequences.

Our Bayesian approach also differs from recently developed methods used in the field, where scrubbing or censoring is used to remove volumes with excessive head motion [28, 26, 30]. Such approaches are ad hoc in the sense that an arbitrary motion threshold first needs to be applied, to determine which volumes to remove or censor. Another problem with these approaches is that they can significantly alter the temporal structure of the data.

1.4. Variable selection

It can be difficult to determine which variables to include in the design matrix (i.e., the mean function) of the GLM, including those that capture scanner drift, or residual head movement effects after motion correction. It can

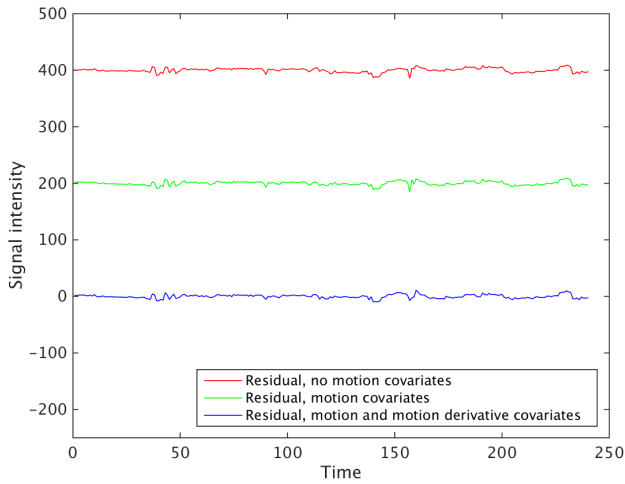


Figure 3: Residual time series obtained after fitting models with three different design matrices. The first design matrix only contains covariates for intercept and time trends (4 covariates in total). The second design matrix also contains head motion covariates (10 covariates in total), and the third design matrix also contains the temporal derivative of the head motion (16 covariates in total). For visualization purposes, a mean of 200 was added to the green residual, and a mean of 400 was added to the red residual. Note that the time series in this voxel has a very low correlation with the simulated motion, and the residuals are therefore homoscedastic.

be even more difficult to choose the appropriate explanatory variables to use in the variance function. For this reason we introduce variable selection priors in both the mean and variance function, which has the effect of automatically determining the set of explanatory variables; more precisely, we obtain the posterior inclusion probability for each of the candidate variables and the posterior distribution of their effect sizes from a single MCMC run. In addition, we have a third variable selection prior acting on the lags of the AR noise process which allows us to estimate the model order of the AR process directly from the data. This aspect is particularly important for high (sub-second) temporal resolution data. Our analysis here is massively univariate without modeling spatial dependencies, however we discuss possible extensions to spatial models in the Discussion.

2. GLM with heteroscedastic autoregressive noise

We propose the following voxel-wise GLM with heteroscedastic noise innovations (GLMH) for blood oxygenation level dependent (BOLD) time series:

$$y_t = \mathbf{x}_t^T \beta + u_t$$

$$u_t = \rho_1 u_{t-1} + \dots + \rho_k u_{t-k} + \exp(\mathbf{z}_t^T \gamma / 2) \cdot \varepsilon_t, \quad t = 1, \dots, T, \quad (1)$$

where y_t is the observed fMRI signal at time t , \mathbf{x}_t is a vector with p covariates for modeling the mean, ε_t is zero

mean Gaussian white noise with unit variance, and \mathbf{z}_t is a vector of q covariates for modeling the variance of the heteroscedastic noise innovations as $\ln \sigma_t^2 = \mathbf{z}_t^T \gamma$. Note that we are here using the logarithmic link function for the variance, but our methodology is applicable to any invertible and twice-differentiable link function. The GLMH model introduces heteroscedasticity through noise innovations with the effect that a large variance at time t is likely to generate a large innovation in the u_t equation, which is propagated through the autoregressive structure. The effect is that the noise remains large in subsequent scans, which is desirable as it has been shown that motion related signal changes can persist more than 10 seconds after motion ceases [26].

Let $\mathbf{y} = (y_1, \dots, y_T)^T$ be a T -dimensional vector consisting of observed fMRI signals at a specific voxel and define \mathbf{u} and ε analogously. Also, define $\mathbf{X} = (\mathbf{x}_1, \dots, \mathbf{x}_T)^T$ and $\mathbf{Z} = (\mathbf{z}_1, \dots, \mathbf{z}_T)^T$ to be $T \times p$ and $T \times q$ matrices consisting of covariates. Further, let $\rho = (\rho_1, \dots, \rho_k)^T$. The GLMH model can then be written as follows:

$$\mathbf{y} = \mathbf{X}\beta + \mathbf{u}$$

$$\mathbf{u} = \mathbf{U}\rho + \text{Diag}(\exp(\mathbf{Z}\gamma/2)) \varepsilon, \quad (2)$$

where \mathbf{U} is a $T \times k$ matrix consisting of lagged values of \mathbf{u} , assuming that k pre-sample observations are available.

3. Bayesian inference

We begin by defining the binary indicators \mathcal{I}_β , \mathcal{I}_γ , and \mathcal{I}_ρ , which are used for variable selection purposes. Here \mathcal{I}_β is a $p \times 1$ vector whose j th element takes the value 1 if β_j is non-zero and 0 otherwise. The indicators \mathcal{I}_γ and \mathcal{I}_ρ are defined analogously. We take a Bayesian approach with the aim of computing the joint posterior distribution $p(\beta, \gamma, \rho, \mathcal{I}_\beta, \mathcal{I}_\gamma, \mathcal{I}_\rho | \mathbf{y}, \mathbf{X}, \mathbf{Z})$. This distribution is intractable and we use Metropolis-within-Gibbs sampling [4] to generate draws from the joint posterior. The algorithm iterates between the following three full conditional posteriors:

1. $(\beta, \mathcal{I}_\beta) | \mathbf{y}, \mathbf{X}, \mathbf{Z}, \cdot$
2. $(\rho, \mathcal{I}_\rho) | \mathbf{y}, \mathbf{X}, \mathbf{Z}, \cdot$
3. $(\gamma, \mathcal{I}_\gamma) | \mathbf{y}, \mathbf{X}, \mathbf{Z}, \cdot$

where \cdot denotes all other model parameters.

3.1. Prior distribution

We assume prior independence between β , γ and ρ , and let

$$\beta \sim N(\mu_\beta, \Omega_\beta)$$

$$\gamma \sim N(\mu_\gamma, \Omega_\gamma)$$

$$\rho \sim N(\mu_\rho, \Omega_\rho), \quad (3)$$

where $\Omega_\beta = \tau_\beta^2 I_p$, $\Omega_\gamma = \tau_\gamma^2 I_q$, $\Omega_\rho = \tau_\rho^2 \text{Diag}(1, \frac{1}{2^c}, \frac{1}{3^c}, \dots, \frac{1}{k^c})$ and $\mu_\rho = (r, 0, \dots, 0)^T$. The prior mean μ_β is set to 0 for all

parameters, except for the term corresponding to the intercept which is set to 800. The prior mean μ_γ is set equal to 0 for all parameters. Note that the $N(\mu_\rho, \Omega_\rho)$ prior centers the prior on the AR(1) process $u_t = r \cdot u_{t-1} + \varepsilon_t$, with coefficients corresponding to longer lags more tightly shrunk toward zero. We also restrict the prior on ρ to the stationarity region. The user is required to specify the prior hyperparameters $\tau_\beta, \tau_\gamma, \tau_\rho, r$ and ζ . As default values we use $\tau_\beta = \tau_\gamma = 10$, $\tau_\rho = 1$, $r = 0.5$ and $\zeta = 1$, providing a rather uninformative prior. A more complex prior, which for example allows for prior dependence between β and γ , can easily be incorporated into our framework.

3.2. Variable selection

Our MCMC algorithm presented in Section 3.4 performs Bayesian variable selection among both sets of covariates, \mathbf{x}_t (mean) and \mathbf{z}_t (variance). We also use Bayesian variable selection in the AR noise process, thereby automatically learning about the order k of the AR process. The first element of β and γ (i.e., the intercepts in the mean and log variance, respectively) are not subject to variable selection. To describe the variable selection prior, let us focus on β . Let $\beta_{\mathcal{I}_\beta}$ denote the subset of regression coefficients selected by \mathcal{I}_β . To allow for variable selection we take the prior for the unrestricted $\beta \sim N(\mu_\beta, \Omega_\beta)$ and condition on the zeros dictated by \mathcal{I}_β . Since all our prior covariance matrices are diagonal, the conditional distributions are simply the marginal distributions, e.g. $\beta_{\mathcal{I}_\beta} \sim N(\mu_{\beta, \mathcal{I}_\beta}, \tau_{\beta}^2 I_{p_{\mathcal{I}_\beta}})$, where $\mu_{\beta, \mathcal{I}_\beta}$ is the subset of elements of μ corresponding to \mathcal{I}_β , and $p_{\mathcal{I}_\beta}$ is the number of elements in $\beta_{\mathcal{I}_\beta}$. To complete the variable selection prior we let the elements of \mathcal{I}_β be apriori independent and Bernoulli distributed with $\Pr(I_{\beta, j} = 1) = \pi_\beta$. It is straightforward to extend the prior by letting π_β follow a Beta(a, b) prior and then adding an MCMC updating step for π_β [17]. Other priors on \mathcal{I}_β are handled similarly.

3.3. Variable selection in linear regression using MCMC

This section describes how to simulate from the joint posterior of the regression coefficients, and their variable selection indicators in the Gaussian linear regression model with unit noise variance

$$\mathbf{y} = \mathbf{X}\beta + \varepsilon,$$

where $\varepsilon = (\varepsilon_1, \dots, \varepsilon_T)^T$ and $\varepsilon_i \stackrel{iid}{\sim} N(0, 1)$. This will be an important building block in our Metropolis-within-Gibbs algorithms described in Sections 2 and 3.4. Similar to Smith and Kohn [31], we sample β jointly with its variable selection indicators \mathcal{I} (we drop the subscript β here) by first generating from the marginal posterior $p(\mathcal{I}|\mathbf{y}, \mathbf{X})$ followed by a draw from $p(\beta|\mathcal{I}, \mathbf{y}, \mathbf{X})$. A draw from $p(\beta|\mathcal{I}, \mathbf{y}, \mathbf{X})$ is easily obtained by sampling the non-zero elements of β as

$$\beta_{\mathcal{I}}|\mathcal{I}, \mathbf{y}, \mathbf{X} \sim N\left(\tilde{\beta}_{\mathcal{I}}, (\mathbf{X}_{\mathcal{I}}^T \mathbf{X}_{\mathcal{I}} + \Omega_{\mathcal{I}}^{-1})^{-1}\right), \quad (4)$$

where $X_{\mathcal{I}}$ is the $T \times p_{\mathcal{I}}$ matrix with covariates from the subset \mathcal{I} and $\tilde{\beta}_{\mathcal{I}}$ is given in Appendix B. A closed form expression for $p(\mathcal{I}|\mathbf{y}, \mathbf{X})$, the marginal posterior of \mathcal{I} , is given in Appendix B, from which we can obtain $p(\mathcal{I}_j|\mathbf{y}, \mathbf{X}, \mathcal{I}_{-j}) \propto p(\mathcal{I}|\mathbf{y}, \mathbf{X})$, where \mathcal{I}_{-j} denotes \mathcal{I} with the j th element excluded. Simulating from the joint posterior of β and \mathcal{I} is therefore achieved by simulating from each $p(\mathcal{I}_j|\mathbf{y}, \mathbf{X}, \mathcal{I}_{-j})$ in turn, followed by sampling of $\beta_{\mathcal{I}}$ from (4).

3.4. MCMC for the GLMH model

Updating $(\beta, \mathcal{I}_\beta)$

To sample from the full conditional posterior of $(\beta, \mathcal{I}_\beta)$ conditional on ρ and γ , let us re-formulate the model as

$$\tilde{y}_t = \tilde{\mathbf{x}}_t^T \beta + \varepsilon_t, \quad (5)$$

where $\tilde{y}_t = \exp(-\mathbf{z}_t^T \gamma / 2) \rho(L) y_t$, $\tilde{\mathbf{x}}_t = \exp(-\mathbf{z}_t^T \gamma / 2) \rho(L) \mathbf{x}_t$, and $\rho(L) = 1 - \rho_1 L - \dots - \rho_k L^k$ is the usual lag polynomial in the lag operator $L^k y_t = y_{t-k}$ from time series analysis. The Jacobian of the transformation $\mathbf{y} \rightarrow \tilde{\mathbf{y}}$ is $J(\mathbf{y} \rightarrow \tilde{\mathbf{y}}) = \exp\left(\gamma^T \sum_{t=1}^T \mathbf{z}_t / 2\right)$, which can be seen as follows. The inverse transformation is $y_t = \rho^{-1}(L) \exp(\mathbf{z}_t^T \gamma / 2) \tilde{y}_t$, where $\rho^{-1}(L) = 1 + \psi_1 L + \psi_2 L^2 + \dots$ is the inverse lag polynomial for some coefficients ψ_1, ψ_2, \dots . This system of equations is recursive so the Jacobian is $\left| \prod_{t=1}^T \frac{\partial y_t}{\partial \tilde{y}_t} \right|$ and $\frac{\partial y_t}{\partial \tilde{y}_t} = \exp(\mathbf{z}_t^T \gamma / 2)$ which proves the result. Note that $J(\mathbf{y} \rightarrow \tilde{\mathbf{y}})$ does not depend on β and can therefore be ignored when deriving the full conditional posterior of β . Now, β in (5) are the coefficients in a linear regression with unit noise variance and we can draw from the full conditional $p(\beta, \mathcal{I}_\beta|\mathbf{y}, \mathbf{X}, \mathbf{Z}, \cdot)$ as described in Section 3.3 with \mathbf{y} and \mathbf{X} replaced by $\tilde{\mathbf{y}}$ and $\tilde{\mathbf{X}}$, respectively.

Updating (ρ, \mathcal{I}_ρ)

The AR process can be rewritten as

$$\tilde{u}_t = \tilde{U}_t \rho + \varepsilon_t,$$

where $\tilde{u}_t = \exp(-\mathbf{z}_t^T \gamma / 2) u_t$. The Jacobian of this transformation is $J(\mathbf{u} \rightarrow \tilde{\mathbf{u}}) = \exp\left(\gamma^T \sum_{t=1}^T \mathbf{z}_t / 2\right)$ which does not depend on ρ and can therefore be ignored when updating ρ . Now, ρ are the coefficients in a linear regression with unit noise variance and we can draw from the full conditional $p(\rho, \mathcal{I}_\rho|\mathbf{y}, \mathbf{X}, \mathbf{Z}, \cdot)$ as described in Section (3.3).

Updating $(\gamma, \mathcal{I}_\gamma)$

The full conditional posterior of $(\gamma, \mathcal{I}_\gamma)$ is a complicated distribution which we can not easily sample from. However, it is clear from the model

$$u_t = \rho_1 u_{t-1} + \dots + \rho_k u_{t-k} + \exp(\mathbf{z}_t^T \gamma / 2) \cdot \varepsilon_t,$$

that the conditional likelihood of γ is of the form described in Villani et al. [35] where the observations (the u_t in this case) are conditionally independent and γ enters each factor in the likelihood linearly ($\mathbf{z}_t^T \gamma$) through a scalar valued quantity $\varphi_t = \exp(\mathbf{z}_t^T \gamma / 2)$. The MCMC update with

a finite step Newton proposal with variable selection described in [34, 35] can therefore be used. In fact, Villani et al. [34] contains the details for the Gaussian heteroscedastic regression, which is exactly the model when we condition on β (since \mathbf{u} is then known). The algorithm in [35] proposes γ and \mathcal{I}_γ jointly by randomly changing a subset of the indicators in \mathcal{I}_γ followed by a proposal from $\gamma|\mathcal{I}_\gamma$ using a multivariate- t distribution tailored to the full conditional posterior. The tailoring is achieved by taking a small number of Newton steps toward the posterior mode, and using the negative inverse Hessian at the terminal point as the covariance matrix in the multivariate- t proposal distribution. The update is fast, since the Jacobian and Hessian can be computed in closed form using the chain rule and compact matrix algebra. It is also possible to compute the expected Hessian (Fisher information) in closed form. The expected Hessian tends to be more stable numerically with only marginally worse tailoring to the posterior. Note also that the Newton iterations always start from the current value of γ , which is typically not far from the mode, so even one or two Newton steps are usually sufficient. We refer to Villani et al. [35] for details of the general algorithm, and to Villani et al. [34] for expressions of the Jacobian, Hessian and expected Hessian for γ .

4. Implementation

A drawback of using MCMC is that processing of a single fMRI dataset can take several hours [37, 29]. Our implementation of the heteroscedastic GLM is therefore written in C++, using the Eigen library [16] for all matrix operations. The random number generators available in the C++ standard library (available from C++ 2011) were used, together with the Eigen library, to make random draws from multivariate distributions. The OpenMP (Open Multi Processing) library was used to take advantage of all the CPU cores, by analyzing several voxels in parallel. For all analyses the number of Newton steps is set to 2. To lower the processing time, the variable selection indicators for the variance covariates are only updated in 60% of the draws.

5. Results

5.1. Simulated data

5.1.1. GLMH vs Bayesian GLM with homoscedastic noise

To verify that the heteroscedastic model works as expected, and to compare it to a homoscedastic model for data with a known activity pattern, the algorithms were applied to simulated data with homoscedastic and heteroscedastic noise. The simulated data were created using (posterior mean) beta estimates from real fMRI data (with several motion spikes), together with the applied design matrix, to create a timeseries in each voxel. The design matrix consisted of an intercept, time trends for modeling



Figure 4: Left: A mask for gray matter voxels. Middle: Voxels with simulated activity. Right: Voxels with heteroscedastic noise. The simulated data consists of four regions; active voxels with homoscedastic or heteroscedastic noise, and non-active voxels with homoscedastic or heteroscedastic noise.

drift (linear, quadratic and cubic), activity covariates, estimated head motion parameters and their temporal derivative (in total 16 covariates in addition to the activity covariates). Beta values for active voxels were generated from a $abs(N(0, 9)) + 3$ distribution, and for non-active voxels from a $N(0, 0.06)$ distribution. The simulated activity is thereby very easy to detect, and the difficult part is to model the heteroscedastic noise.

For approximately half of the active voxels, heteroscedastic noise was added according to Equation 1. For one covariate at a time (either an activation or head motion covariate), the corresponding γ parameter was set to 1, 2, or 3. For one covariate representing the (absolute value of the) temporal derivative of the head motion, the γ parameter was instead set to 1, 1.25 or 1.5 (as motion spikes can be rather large, and thereby make the simulation unrealistic). To simulate simultaneous heteroscedasticity from several covariates, the γ parameters for the activity and the head motion covariates were simultaneously set to 1, 2, or 3, while the γ parameter for the derived head motion covariate was set to 1.25 for all cases. The γ parameter for the intercept covariate was always set to 1, and all other γ parameters were set to 0. For all other voxels, homoscedastic noise was added ($\gamma = 1$ for the intercept only). The four autocorrelation parameters were set to 0.4, 0.2, 0.1 and 0.05, respectively. The simulated data thereby consists of four regions; active voxels with homoscedastic or heteroscedastic noise, and non-active voxels with homoscedastic or heteroscedastic noise. To lower the processing time, only a single slice of data was simulated. See Figure 4 for the gray matter mask, the mask for active voxels and the mask for voxels with heteroscedastic noise.

For each simulated dataset, the analysis was performed (i) including only an intercept for the variance (i.e., a homoscedastic model) and (ii) including all covariates for the variance (i.e., a heteroscedastic model). In both cases all covariates (except the intercept) were standardized, to have zero mean and variance 1. For the mean covariates, the original temporal derivative of the head motion parameters was used. For the variance covariates, the absolute value was used instead, as the variance should always increase at a motion spike regardless of the direction (positive or negative). For both models, a fourth order

AR model was used in each voxel. Variable selection was performed on all covariates (mean and variance), except for the intercept, as well as for the four AR parameters. Stationarity was enforced for the AR parameters, by discarding draws where the absolute value of any eigenvalue of the companion matrix is larger than or equal to 1. For each voxel, a total of 1,000 draws were used for MCMC burn-in and another 1,000 draws were saved for inference.

Figures 5 - 8 show receiver operating characteristic (ROC) curves for the two models, for different types (activity, motion, motion derivative, all) and levels ($\gamma = 1, 2$ or 3) of heteroscedasticity. The ROC curves were generated by varying the threshold for the posterior probability maps (PPMs) from 0.01 to 1.00. It is clear that both models detect virtually all the active voxels for low levels of heteroscedasticity, while the homoscedastic model fails to detect a large portion of the active voxels with heteroscedastic noise for higher levels of heteroscedasticity. The posterior inclusion probabilities for the variance parameters (γ) indicate that the heteroscedastic model in virtually all voxels only includes the covariates that were used to generate the heteroscedastic noise (not shown).

5.1.2. GLMH vs weighted least squares

To compare the heteroscedastic model to the weighted least squares (WLS) approach proposed by Diedrichsen and Shadmehr [6], where a single weight is estimated for each volume, two additional datasets were simulated (using the same activity mask as above). For the first dataset, the same heteroscedastic noise was added to all voxels. For the second dataset, heteroscedastic noise was added to only 30% of the voxels (using the same hetero mask as above). The simulation was performed to generate different types (motion, motion derivative) and levels ($\gamma = 1, 2$ or 3) of heteroscedasticity. As the two approaches use different models for the temporal autocorrelation, the four AR parameters were set to 0, to focus solely on the heteroscedasticity. To mimic the analysis by Diedrichsen and Shadmehr [6], no motion regressors were used in the design matrix for the WLS approach. Bayesian t -scores (posterior mean / posterior standard deviation) were calculated for the heteroscedastic model, and compared to regular t -scores from the WLS approach. Figures 9 - 12 show ROC curves for the two approaches. Both approaches work well when the same heteroscedastic noise is present in all voxels, but the WLS approach fails to detect a large portion of the activity when the heteroscedastic noise is only present in 30% of the voxels.

5.2. Application to real data

Three datasets from the OpenfMRI project[24, 25] were analyzed using both the homoscedastic and heteroscedastic noise models. The datasets include experiments on rhyme judgment¹, living-nonliving judgment² and mixed

gambles³[33].

In the rhyme judgment task, stimuli were presented in pairs (consisting of either words or pseudo-words) and the subject was asked whether the pair of stimuli rhymed with one another. The dataset consists of 13 subjects and two different conditions: words and pseudo-words.

In the living/nonliving judgment task, subjects were presented with words in either plain or mirror-reversed format, and asked whether the stimulus referred to a living or nonliving object. The data set consists of 14 subjects and 4 different conditions: mirror-reversed trials preceded by a plain text trial, mirror-reversed trials preceded by a mirror-reversed trial, plain-text trials preceded by a mirror-reversed trial, and plain-text trials preceded by a plain-text trial. A fifth covariate is used to represent failed (junk) trials.

Finally, in the mixed gambles task, subjects were presented with gambles in which they have a 50% chance of gaining and a 50% chance of losing money, where the potential gain and loss varied across trials. The subject then decided whether or not to accept the gamble. The data set consists of 16 subjects and 4 different conditions: task, parametric gain, parametric loss, and distance from indifference point. For more details on the 3 datasets we refer to the OpenfMRI website (<https://openfmri.org>).

¹<https://openfmri.org/dataset/ds000003/>

²<https://openfmri.org/dataset/ds000006/>

³<https://openfmri.org/dataset/ds000005/>

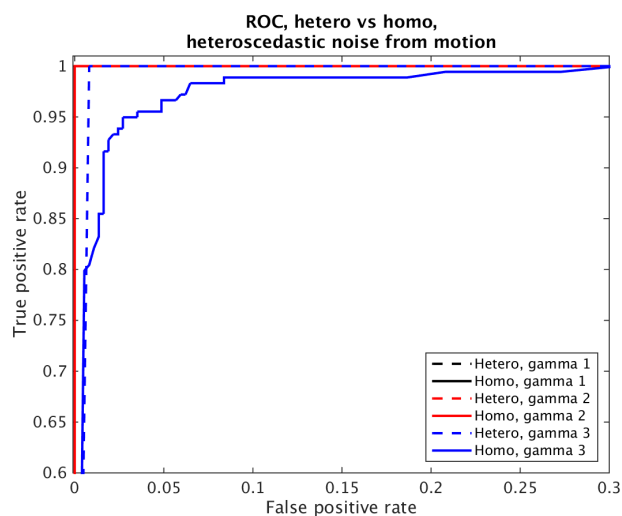


Figure 5: ROC curves for simulated data with heteroscedastic noise from one motion covariate, and different levels of heteroscedasticity. Both models perform well for low levels of heteroscedasticity, but the homoscedastic model performs worse for high levels of heteroscedasticity.

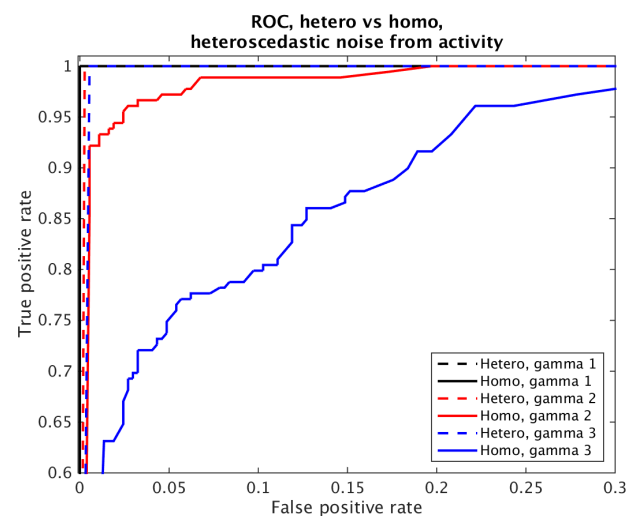


Figure 7: ROC curves for simulated data with heteroscedastic noise from one activity covariate, and different levels of heteroscedasticity. The homoscedastic model has a lower performance, and fails to detect a large portion of the active voxels.

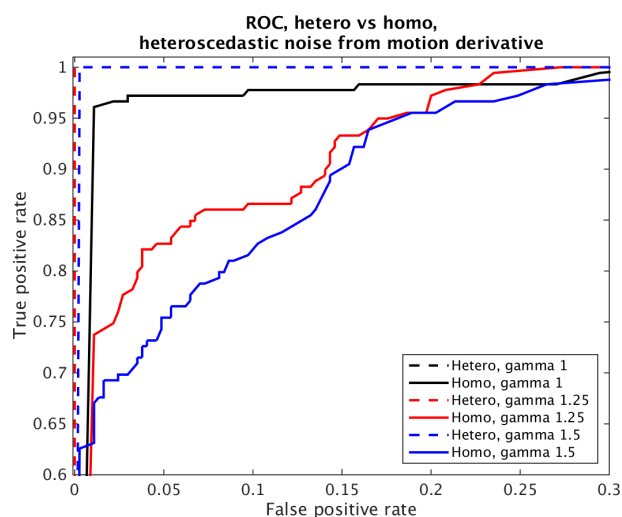


Figure 6: ROC curves for simulated data with heteroscedastic noise from the temporal derivative of one motion covariate, and different levels of heteroscedasticity. The homoscedastic model has a lower performance, and fails to detect a large portion of the active voxels.

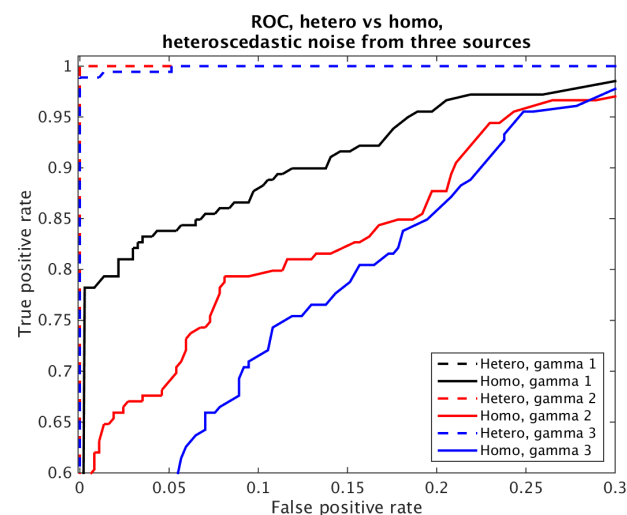


Figure 8: ROC curves for simulated data with heteroscedastic noise from three simultaneous sources (motion, motion derivative, activity), and different levels of heteroscedasticity. The homoscedastic model has a much lower performance, and fails to detect a large portion of the active voxels.

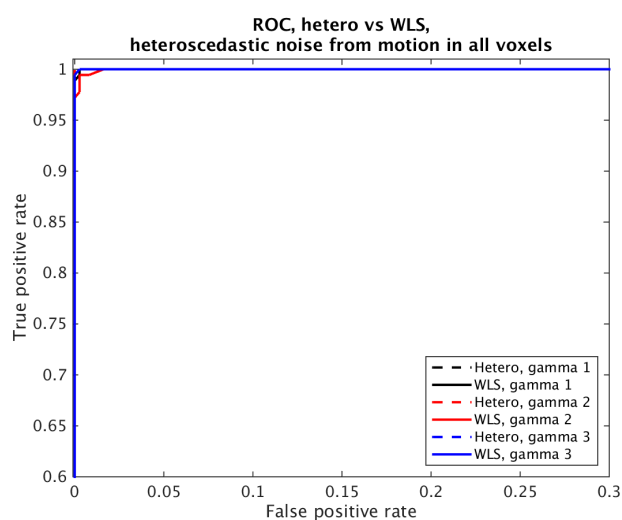


Figure 9: ROC curves for simulated data with heteroscedastic noise in all voxels, generated by one motion covariate. Both approaches perform well for all levels of heteroscedasticity.

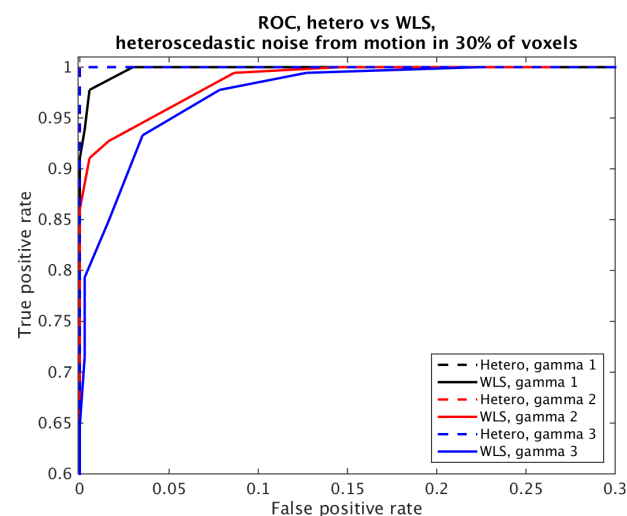


Figure 11: ROC curves for simulated data with heteroscedastic noise in 30% of the voxels, generated by one motion covariate. Compared to heteroscedastic noise in all voxels, the WLS approach has a slightly lower performance.

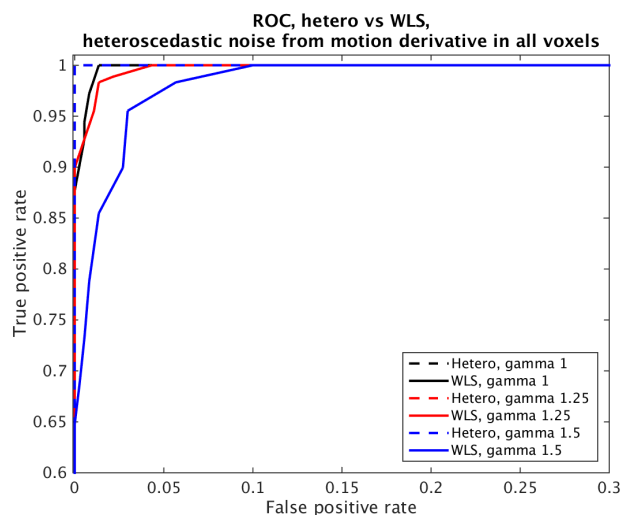


Figure 10: ROC curves for simulated data with heteroscedastic noise in all voxels, generated by the temporal derivative of one motion covariate. Both approaches perform well, but the hetero approach works better for higher levels of heteroscedasticity.

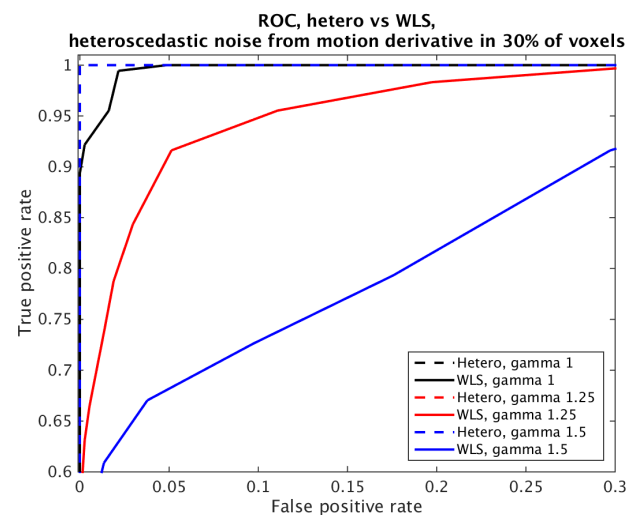


Figure 12: ROC curves for simulated data with heteroscedastic noise in 30% of the voxels, generated by the temporal derivative of one motion covariate. Compared to heteroscedastic noise in all voxels, the WLS approach fails to detect a large portion of the active voxels.

5.2.1. Single subject analysis

Prior to statistical analysis, the BROCCOLI software [9] was used to perform motion correction and 6 mm FWHM smoothing. For each subject, the analysis was performed as described for the simulated data (16 covariates + activity covariates, for both mean and variance). Only gray matter voxels were analyzed to lower processing time. All results were finally transformed to MNI space, by combining T1-MNI and fMRI-T1 transforms.

Figure 13 shows PPMs for one subject from the rhyme judgment dataset and one subject from the mixed gambles dataset; the heteroscedastic model tends to detect more brain activity compared to the homoscedastic model. Figures 14 - 16 summarize the number of voxels where the difference between the heteroscedastic PPM and the homoscedastic PPM is larger than 0.5, for the three different datasets. The largest PPM differences are found in the rhyme judgment dataset, which contains the highest number of motion spikes. Figure 20 shows a comparison between the estimated homoscedastic and heteroscedastic standard deviation for a single time series; the heteroscedastic standard deviation is much higher for time points close to motion spikes, but lower for time points with little head motion. The homoscedastic model struggles to find a single variance to fit both time points with and without motion, thereby ending up inflating the variance at times with little or no motion. The heteroscedastic model can have a lower variance at timeperiods with little motion, and is therefore able to detect more brain activity. Figures 17 - 19 show the number of voxels, for each dataset, where the posterior inclusion probability is larger than 90% for the variance covariates. The temporal derivative of the head motion parameters are clearly the most important covariates for modeling the variance.

5.2.2. Convergence & efficiency of MCMC

The MCMC convergence is in general excellent; the acceptance probabilities for the variance covariates are $85.4\% \pm 5.1\%$ for the rhyme judgment dataset, $89\% \pm 1.9\%$ for the living nonliving dataset and $87\% \pm 7.1\%$ for the mixed gambles dataset (standard deviation calculated over subjects). The efficiency of the MCMC chain in each voxel was investigated by calculating the inefficiency factor for each covariate for the mean and the variance, as well as for the four AR parameters. Since it is hard to estimate the inefficiency factor for variables with a low posterior inclusion probability (IPr), the inefficiency factor was only estimated if the IPr was larger than 0.3. To carefully investigate the MCMC efficiency in every voxel is difficult, due to the large number of voxels and covariates. An inefficiency factor of 1 is ideal, but very seldom achieved in practice. Inefficiency factors less than 10 - 20 are normally considered as acceptable. Tables 1, 2 and 3 therefore state the proportion of included voxels (IPr > 0.3) where the inefficiency factor is larger than 10, for the mean covariates (β), the variance covariates (γ), and the auto regressive parameters (ρ), respectively. The efficiency is in general

high for both the mean and the variance covariates; only a few voxels have inefficiency factors larger than 10. The efficiency is in general lower for the auto regressive parameters, which has two explanations. First, the stationarity restriction enforces the parameters to a certain region, and if a parameter is repeatedly close to the boundary the sampling efficiency will be low. Second, in some voxels the algorithm finds a new mode after a subset of all the draws, which indicates that the chain has not converged. Considering the fact that 1,000 draws are already used for burnin, and that the processing time is 10 - 40 hours per subject, increasing the number of burnin draws even further is not a realistic option.

5.2.3. Group analysis

Group analyses were performed using the full posterior of the task-related covariates from each subject (1,000 draws). To keep things simple, we perform each group analysis by computing the posterior for the sample mean: $\beta_{group} = N^{-1} \sum_{r=1}^N \beta^{(r)}$, where $\beta^{(r)}$ is the activity coefficient for the r th subject in the sample, and N is the number of subjects. For each draw, the mean brain activity over subjects was calculated, to form the posterior of the mean group activity, β_{group} . In a second group analysis, each subject was weighted with the inverse posterior standard deviation, i.e. $\beta_{group} = N^{-1} \sum_{r=1}^N \beta^{(r)} / std(\beta^{(r)})$. Figure 21 shows hetero and homo group mean PPMs (unweighted and weighted) for the rhyme judgment dataset, minimal differences were found for the other two datasets. The difference between the two models is slightly larger for the weighted group analysis, which is natural as the GLMH approach mainly affects the variance of the posterior. The effect of using a heteroscedastic model would clearly be stronger at the group level if many subjects (e.g. children) in the group exhibit motion spikes.

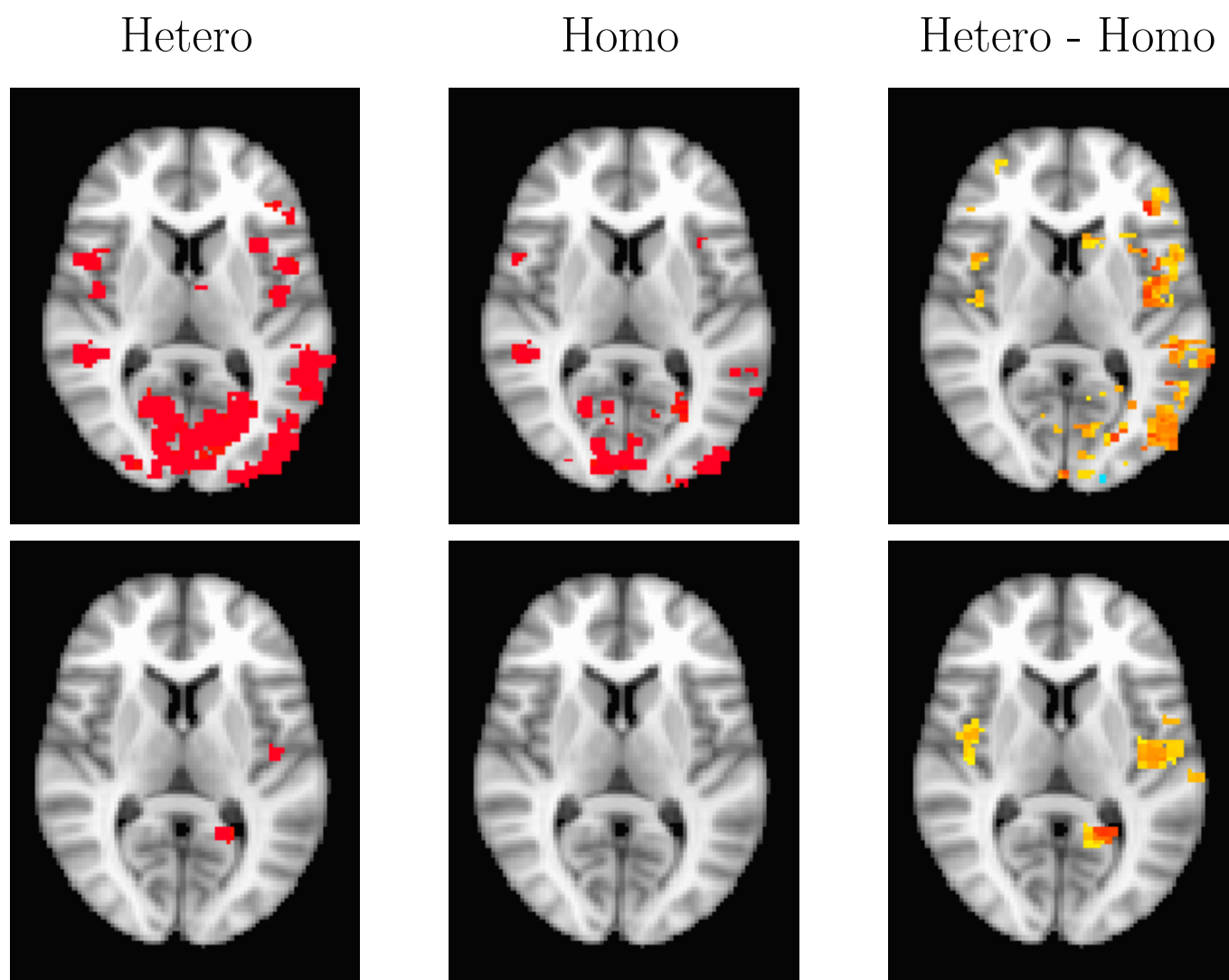


Figure 13: Single subject posterior probability maps (PPMs) for the rhyme judgment and mixed gambles datasets. From left to right: PPM for the heteroscedastic model, PPM for the homoscedastic model, PPM hetero - PPM homo. The hetero and the homo PPMs are thresholded at $Pr = 0.95$, while the difference is thresholded at 0.5. First row: Rhyme judgment dataset (subject 4, pseudo words contrast), Second row: Mixed gambles dataset (subject 3, parametric loss contrast). For subjects with one or several motion spikes, the heteroscedastic and the homoscedastic PPMs differ for a number of voxels. The reason for this is that the homoscedastic model overestimates the constant variance term, due to time points corresponding to motion spikes. The heteroscedastic model instead incorporates the head motion parameters, or the temporal derivative of them, to model these variance increases, and can thereby detect more brain activity.

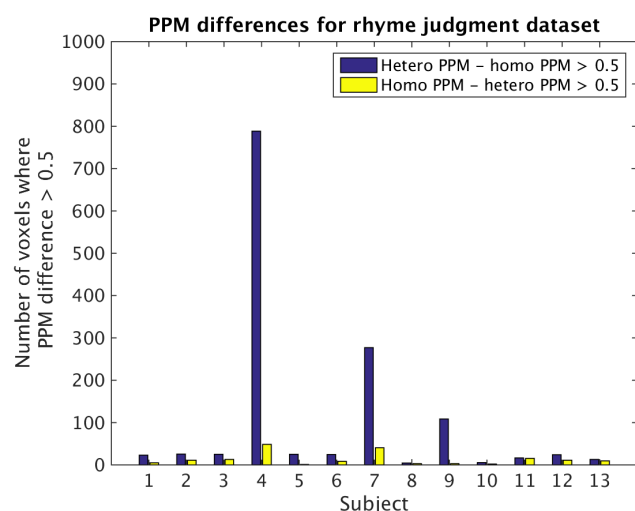


Figure 14: Number of gray matter voxels where the difference between the heteroscedastic PPM and homoscedastic PPM is larger than 0.5, for the rhyme judgment dataset. The bars represent the average over all activity covariates.

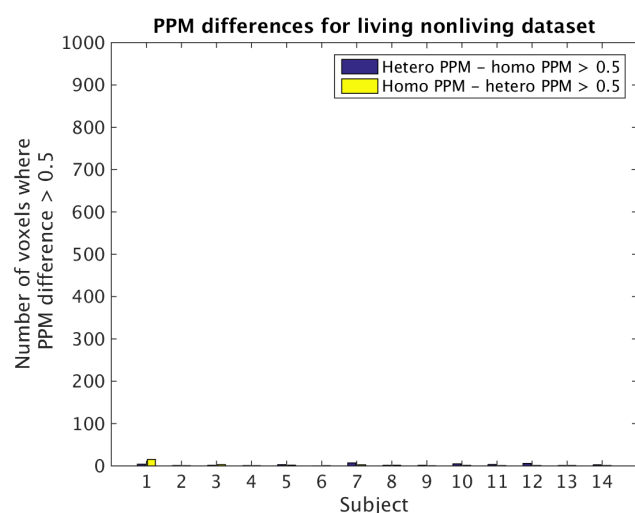


Figure 15: Number of gray matter voxels where the difference between the heteroscedastic PPM and homoscedastic PPM is larger than 0.5, for the living nonliving dataset. The bars represent the average over all activity covariates.

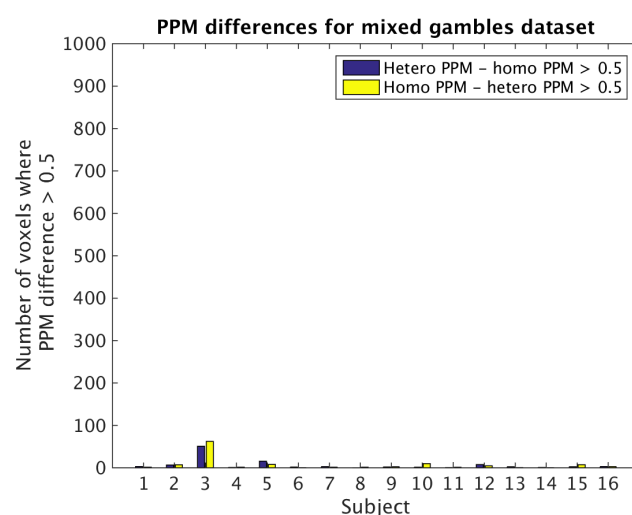


Figure 16: Number of gray matter voxels where the difference between the heteroscedastic PPM and homoscedastic PPM is larger than 0.5, for the mixed gambles dataset. The bars represent the average over all activity covariates.

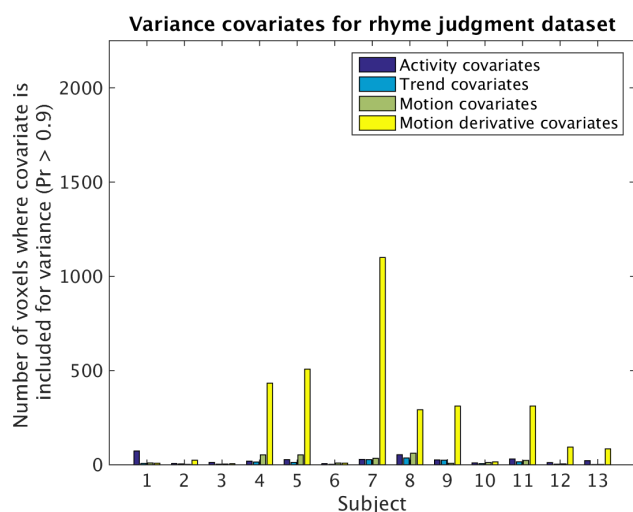


Figure 17: The use of variance covariates for the rhyme judgment dataset. Each bar represents the mean number of gray matter voxels, for each type of covariate (activity, trends, motion, motion derivative), for which the covariate is included to model the variance (posterior inclusion probability larger than 0.9). For subjects with motion spikes, one or several motion derivative covariates are used to model the heteroscedastic variance for a large number of voxels. The mean number of gray matter voxels is 15,600.

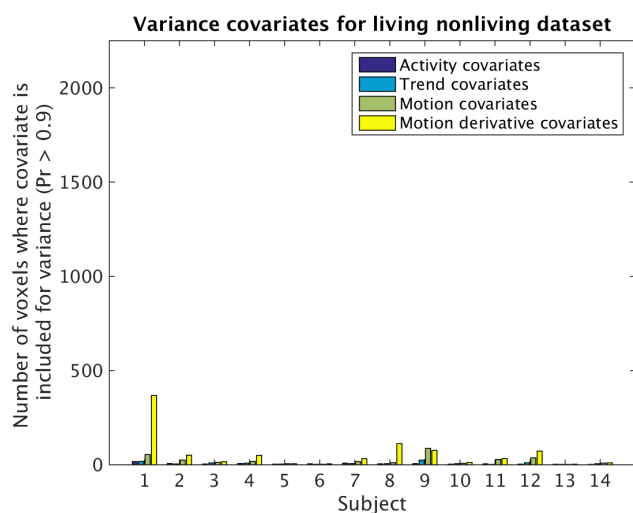


Figure 18: The use of variance covariates for the living nonliving dataset. Each bar represents the mean number of gray matter voxels, for each type of covariate (activity, trends, motion, motion derivative), for which the covariate is included to model the variance (posterior inclusion probability larger than 0.9). This dataset contains very few motion spikes, which explains why so few covariates are included in the variance. The mean number of gray matter voxels is 13,000.

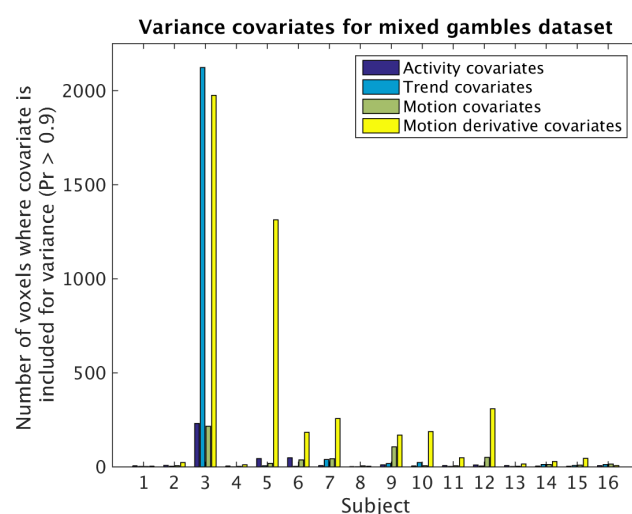


Figure 19: The use of variance covariates for the mixed gambles dataset. Each bar represents the mean number of gray matter voxels, for each type of covariate (activity, trends, motion, motion derivative), for which the covariate is included to model the variance (posterior inclusion probability larger than 0.9). For subjects with motion spikes, one or several motion derivative covariates are used to model the heteroscedastic variance for a large number of voxels. The mean number of gray matter voxels is 15,500.

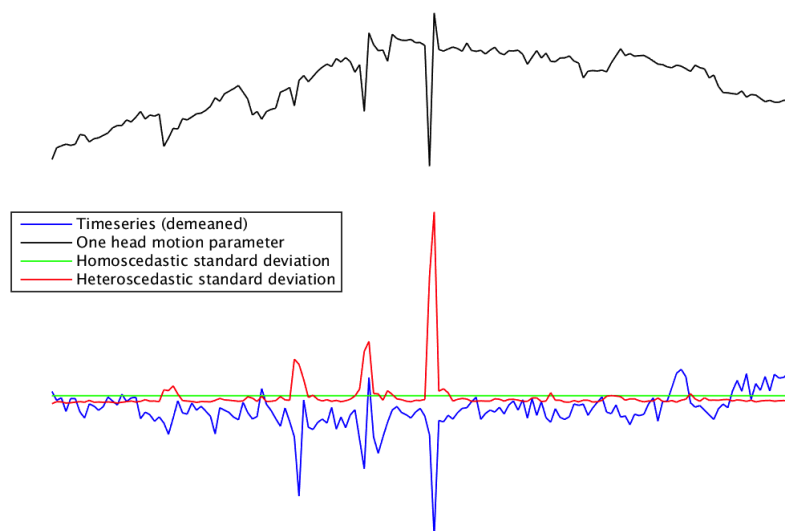


Figure 20: A comparison between the estimated homoscedastic and heteroscedastic standard deviation for one time series. The heteroscedastic standard deviation is much higher for the motion spikes, while it is lower for time points with little head motion. For this reason, the heteroscedastic model can automatically downweight time points close to motion spikes, and detect more brain activity by not over estimating the standard deviation for time points with little head motion..

Table 1: Proportion of voxels with an inefficiency factor larger than 10 for the mean covariates (β), for the different datasets. The covariates in the design matrix have been grouped together to different types, and the numbers in the table represent the average over covariates (of each type) and subjects. The standard deviation was calculated over subjects.

Dataset / Covariate type	Activity	Time trends	Motion parameters (MP)	Derivative of MP
Rhyme judgment	3.7% \pm 1.9%	1.8% \pm 1.0%	1.9% \pm 0.9%	2.0% \pm 1.1%
Living nonliving decision	2.0% \pm 1.1%	1.7% \pm 1.2%	1.5% \pm 0.9%	2.2% \pm 1.3%
Mixed gambles task	3.0% \pm 1.8%	3.0% \pm 1.9%	2.9% \pm 1.7%	3.4% \pm 2.1%

Table 2: Proportion of voxels with an inefficiency factor larger than 10 for the variance covariates (γ), for the different datasets. The covariates in the design matrix have been grouped together to different types, and the numbers in the table represent the average over covariates (of each type) and subjects. The standard deviation was calculated over subjects.

Dataset / Covariate type	Activity	Time trends	Motion parameters (MP)	Derivative of MP
Rhyme judgment	1.3% \pm 0.8%	1.0% \pm 0.4%	1.0% \pm 0.3%	0.8% \pm 0.2%
Living nonliving decision	1.2% \pm 0.5%	1.3% \pm 0.5%	1.9% \pm 0.5%	1.4% \pm 0.3%
Mixed gambles task	1.8% \pm 0.6%	1.8% \pm 0.7%	2.1% \pm 0.7%	1.7% \pm 0.5%

Table 3: Proportion of voxels with an inefficiency factor larger than 10 for the auto correlation parameters (ρ), for the different datasets. The standard deviation was calculated over subjects.

Dataset / AR parameter	AR 1	AR 2	AR 3	AR 4
Rhyme judgment	20.7% \pm 3.0%	10.7% \pm 2.4%	0.8% \pm 0.7%	0.2% \pm 0.3%
Living nonliving decision	12.2% \pm 3.5%	10.3% \pm 2.9%	1.2% \pm 0.9%	0.1% \pm 0.2%
Mixed gambles task	11.1% \pm 3.5%	10.6% \pm 2.7%	2.3% \pm 1.8%	0.4% \pm 0.6%

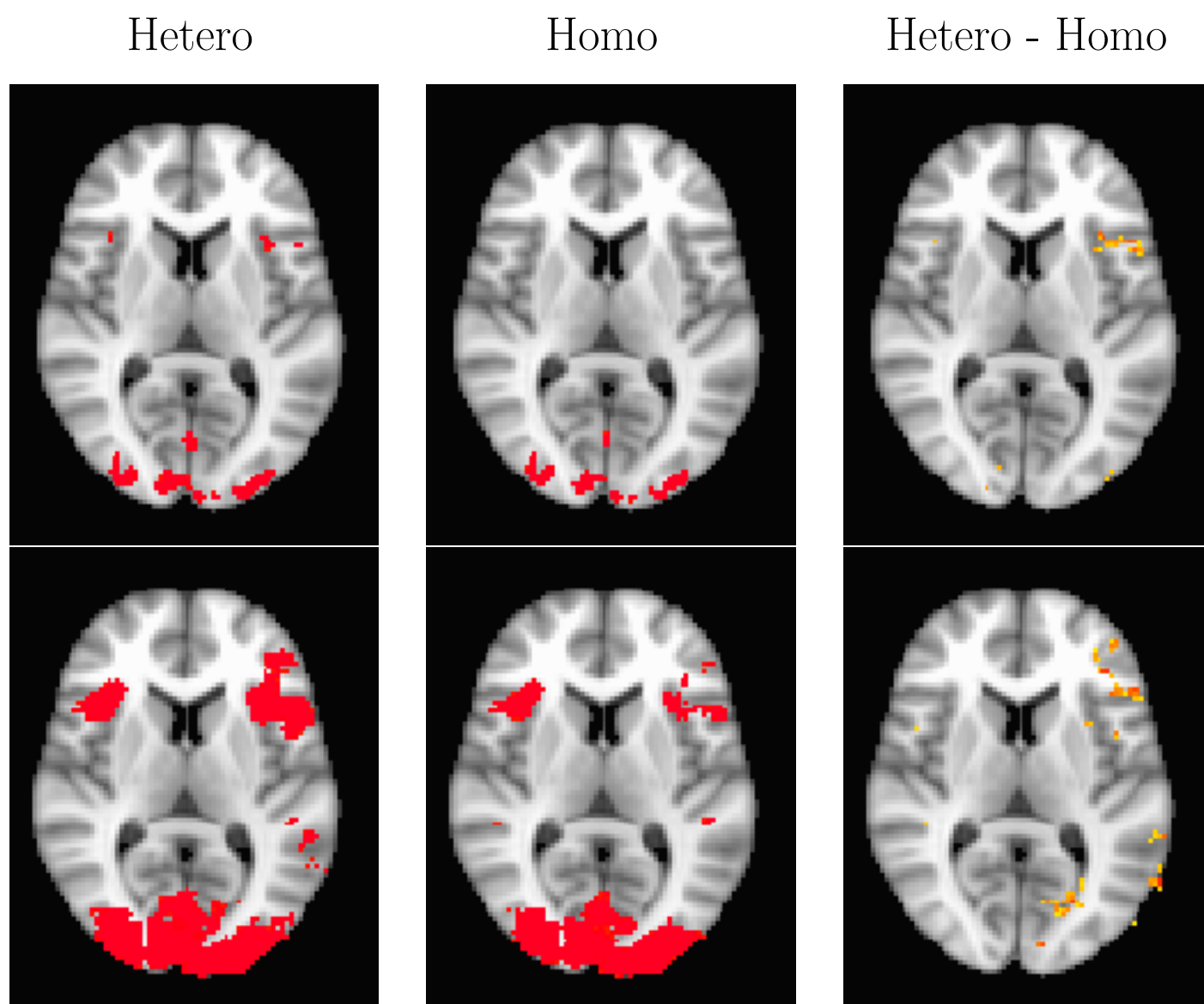


Figure 21: Group level posterior probability maps (PPMs) for the rhyme judgment dataset (contrast pseudo words). From left to right: PPM for the heteroscedastic model, PPM for the homoscedastic model, PPM hetero - PPM homo. The hetero and the homo PPMs are thresholded at $Pr = 0.95$, while the difference is thresholded at 0.5. Top row: group activity calculated without any subject specific weights. Bottom row: group activity calculated by weighting each subject with the inverse standard deviation.

6. Discussion

We have presented a Bayesian heteroscedastic GLM for single subject fMRI analysis. The heteroscedastic GLM takes into consideration the fact that the variance is inflated for time points with a high degree of head motion, and thus provides more sensitive results, compared to its homoscedastic counterpart. Instead of discarding data with too much head motion, or applying different scrubbing or censoring techniques [28, 26, 30], our heteroscedastic GLM automatically downweights the affected time points, and propagates the uncertainty to the group analysis by saving the full posterior. For the rhyme judgment dataset and the mixed gambles dataset, the temporal derivative of the head motion parameters are included as variance covariates for a large number of voxels. For heteroscedastic voxels in active brain areas, the difference between the homoscedastic PPM and the heteroscedastic PPM can be substantial. There will only be a sizeable PPM difference if the voxel belongs to an active brain area, and contains noise where the degree of heteroscedasticity is sufficiently high (see Figures 5 - 8). The difference between the two models is small for the living/nonliving dataset, mainly because that dataset contains very few motion spikes. This illustrates that our algorithm can be applied to any dataset, as using the heteroscedastic approach does not lead to a lower sensitivity when there are no motion spikes present.

6.1. MCMC vs Variational Bayes

A drawback of using MCMC is the computational complexity; it takes 10 - 40 hours (depending on the number of covariates) to analyze a single subject using the heteroscedastic model, with an Intel Core i7 4790K quad-core CPU. One alternative is to use variational Bayes (VB), where a few iterations is normally sufficient to obtain a point estimate of the posterior [22]. It is, however, much harder to perform variable selection within VB, and variable selection is necessary in our case since 18 - 21 covariates are used for the mean as well as for the variance. Without variable selection the model would contain too many parameters, compared to the number of time points in a typical fMRI dataset, which would result in poor estimates. Another problem with VB is that the posterior standard deviation is often underestimated.

In theory, the proposed algorithm can run on a graphics processing unit (GPU), which can analyze some 30,000 voxels in parallel [8, 9]. The pre-whitening step in each MCMC iteration is problematic from a GPU perspective, as a pre-whitened design matrix needs to be stored in each voxel / GPU thread. For 20 covariates and 200 time points, the design matrix requires 4,000 floats for storage. Modern Nvidia GPUs can, however, only store 255 floats per thread.

6.2. GLMH vs weighted least squares

To make a fair comparison between our heteroscedastic model and the WLS approach proposed by Diedrichsen

and Shadmehr [6] is difficult, as we use Bayesian inference. Nevertheless, the WLS approach seems to work well as long as the same heteroscedastic noise is present in all voxels, but fails to detect activity when the heteroscedastic noise is only present in 30% of the voxels. Diedrichsen and Shadmehr [6] argue that the same weight should be used for all voxels, our results for real fMRI data (Figures 17 - 19) instead suggest that only a fraction of voxels have heteroscedastic noise. For some 13,000 - 15,600 voxels in gray matter, the derivative of the head motion parameters are included as covariates for the variance for 300 - 2,000 voxels (for subjects with motion spikes). Note that these numbers represent the average over each covariate type, meaning that if one of the six motion covariates is included for 12,000 voxels, the average over all six covariates will be 2,000 voxels.

The main drawback of the WLS approach is that it requires estimation of T weights from T time points, which results in extremely variable estimates unless the weights are averaged over many voxels. Our heteroscedastic GLM instead models the variance using a regression approach. Through the use of variable selection, a heteroscedastic model can be estimated independently in each voxel, even if the number of covariates is large.

6.3. Multiple comparisons

In contrast to frequentistic statistics, there is no consensus in the fMRI field regarding if and how to correct for multiple comparisons for PPMs. In this paper we have mainly focused on looking at differences between the heteroscedastic and the homoscedastic models, for voxel inference. It is not obvious how to use Bayesian techniques for cluster inference [10], which for frequentistic statistics has a higher statistical power. One possible approach is to use theory on excursion sets [3], to work with the joint PPM instead of marginal PPMs. Such an approach, however, requires a spatially dependent posterior, while we independently estimate one posterior for each voxel.

6.4. Future work

We have here only demonstrated the use of the heteroscedastic GLM for brain activity estimation, but it can also be used for estimating functional connectivity; for example by using a seed time series as a covariate in the design matrix. Although not investigated in this work, it is also possible to include additional covariates that may affect the variance, such as the global mean [27] or recordings of breathing and pulse [13]. Future work will also focus on adding a spatial model [23, 29], instead of analyzing each voxel independently.

Acknowledgement

This work was financed by the Swedish Research council, grant 2013-5229 ("Statistical analysis of fMRI data"), and by the Information Technology for European Advancement

(ITEA) 3 Project BENEFIT (better effectiveness and efficiency by measuring and modelling of interventional therapy). This research was also supported in part by NIH grants R01 EB016061 and P41 EB015909 from the National Institute of Biomedical Imaging. We thank Russ Poldrack and his colleagues for starting the OpenfMRI Project (supported by National Science Foundation Grant OCI-1131441) and all of the researchers who have shared their task-based data.

References

- [1] Adrian, D. W., Maitra, R., and Rowe, D. B. (2013). Ricean over Gaussian modelling in magnitude fMRI analysis - Added complexity with negligible practical benefits. *Stat*, 2(1):303–316. 1
- [2] Beckmann, C. F., Jenkinson, M., and Smith, S. M. (2003). General multilevel linear modeling for group analysis in FMRI. *NeuroImage*, 20(2):1052 – 1063. 1
- [3] Bolin, D. and Lindgren, F. (2015). Excursion and contour uncertainty regions for latent Gaussian models. *Journal of the Royal Statistical Society: Series B (Statistical Methodology)*, 77:85–106. 6.3
- [4] Brooks, S., Gelman, A., Jones, G., and Meng, X.-L. (2011). *Handbook of Markov Chain Monte Carlo*. Chapman and Hall/CRC. 3
- [5] Chen, G., Saad, Z. S., Nath, A. R., Beauchamp, M. S., and Cox, R. W. (2012). FMRI group analysis combining effect estimates and their variances. *NeuroImage*, 60(1):747 – 765. 1
- [6] Diedrichsen, J. and Shadmehr, R. (2005). Detecting and adjusting for artifacts in fMRI time series data. *NeuroImage*, 27(3):624 – 634. 1, 1.3, 5.1.2, 6.2
- [7] Eklund, A., Andersson, M., Josephson, C., Johannesson, M., and Knutsson, H. (2012). Does parametric fMRI analysis with SPM yield valid results? - An empirical study of 1484 rest datasets. *NeuroImage*, 61:565–578. 1, 1.3
- [8] Eklund, A., Dufort, P., Forsberg, D., and LaConte, S. M. (2013). Medical image processing on the GPU - Past, present and future. *Medical Image Analysis*, 17(8):1073 – 1094. 6.1
- [9] Eklund, A., Dufort, P., Villani, M., and LaConte, S. (2014). BROCCOLI: Software for Fast fMRI Analysis on Many-Core CPUs and GPUs. *Frontiers in Neuroinformatics*, 8(24). 5.2.1, 6.1
- [10] Eklund, A., Nichols, T., and Knutsson, H. (2016). Cluster failure: why fMRI inferences for spatial extent have inflated false-positive rates. *Proceedings of the National Academy of Sciences*, 113(28):7900–7905. 6.3
- [11] Friston, K., Holmes, A., Poline, J.-B., Grasby, P., Williams, S., Frackowiak, R., and Turner, R. (1995). Analysis of fMRI time-series revisited. *NeuroImage*, 2(1):45 – 53. 1
- [12] Friston, K. J., Holmes, A., Worsley, K., Poline, J., Frith, C., and Frackowiak, R. (1994). Statistical parametric maps in functional imaging: a general linear approach. *Human brain mapping*, (2):189–210. 1
- [13] Glover, G. H., Li, T.-Q., and Ress, D. (2000). Image-based method for retrospective correction of physiological motion effects in fMRI: RETROICOR. *Magnetic Resonance in Medicine*, 44(1):162–167. 6.4
- [14] Grooten, S., Hutton, C., Ashburner, J., Howseman, A., Josephs, O., Rees, G., Friston, K., and Turner, R. (2000). Characterization and correction of interpolation effects in the realignment of fMRI time series. *NeuroImage*, 11:49–57. 1.1
- [15] Gudbjartsson, H. and Patz, S. (1995). The Rician distribution of noisy MRI data. *Magnetic resonance in medicine*, 34(6):910–914. 1
- [16] Guennebaud, G., Jacob, B., et al. (2010). Eigen v3. <http://eigen.tuxfamily.org>. 4
- [17] Kohn, R., Smith, M., and Chan, D. (2001). Nonparametric regression using linear combinations of basis functions. *Statistics and Computing*, 11(4):313–322. 3.2
- [18] Lenoski, B., Baxter, L. C., Karam, L. J., Maisog, J., and Debins, J. (2008). On the performance of autocorrelation estimation algorithms for fMRI analysis. *IEEE Journal of Selected Topics in Signal Processing*, 2(6):828–838. 1
- [19] Lund, T. E., Madsen, K. H., Sidaros, K., Luo, W.-L., and Nichols, T. E. (2006). Non-white noise in fMRI: Does modelling have an impact? *NeuroImage*, 29(1):54 – 66. 1
- [20] Luo, W.-L. and Nichols, T. E. (2003). Diagnosis and exploration of massively univariate neuroimaging models. *NeuroImage*, 19(3):1014 – 1032. 1
- [21] Noh, J. and Solo, V. (2011). Rician distributed FMRI: Asymptotic power analysis and Cramer-Rao lower bounds. *IEEE Transactions on Signal Processing*, (59):1322–1328. 1
- [22] Penny, W., Kiebel, S., and Friston, K. (2003). Variational Bayesian inference for fMRI time series. *NeuroImage*, 19(3):727 – 741. 6.1
- [23] Penny, W., Trujillo-Barreto, N., and Friston, K. (2005). Bayesian fMRI time series analysis with spatial priors. *NeuroImage*, 24(2):350–362. 6.4
- [24] Poldrack, R., Barch, D., Mitchell, J., Wager, T., Wagner, A., Devlin, J., Cumba, C., Koyejo, O., and Milham, M. (2013). Toward open sharing of task-based fMRI data: the OpenfMRI project. *Frontiers in Neuroinformatics*, 7:12. 5.2
- [25] Poldrack, R. and Gorgolewski, K. (2014). Making big data open: data sharing in neuroimaging. *Nature Neuroscience*, 17:1510–1517. 5.2
- [26] Power, J. D., Mitra, A., Laumann, T. O., Snyder, A. Z., Schlaggar, B. L., and Petersen, S. E. (2014). Methods to detect, characterize, and remove motion artifact in resting state fMRI. *NeuroImage*, 84:320 – 341. 1.3, 2, 6
- [27] Power, J. D., Plitt, M., Laumann, T. O., and Martin, A. (2016). Sources and implications of whole-brain fMRI signals in humans. *NeuroImage*, page In press. 6.4
- [28] Satterthwaite, T. D., Elliott, M. A., Gerraty, R. T., Ruparel, K., Loughhead, J., Calkins, M. E., Eickhoff, S. B., Hakonarson, H., Gur, R. C., Gur, R. E., and Wolf, D. H. (2013). An improved framework for confound regression and filtering for control of motion artifact in the preprocessing of resting-state functional connectivity data. *NeuroImage*, 64:240 – 256. 1.3, 6
- [29] Sidén, P., Eklund, A., Bolin, D., and Villani, M. (2017). Fast Bayesian whole-brain fMRI analysis with spatial 3D priors. *NeuroImage*, 146:211–225. 4, 6.4
- [30] Siegel, J. S., Power, J. D., Dubis, J. W., Vogel, A. C., Church, J. A., Schlaggar, B. L., and Petersen, S. E. (2014). Statistical improvements in functional magnetic resonance imaging analyses produced by censoring high-motion data points. *Human Brain Mapping*, 35(5):1981–1996. 1.3, 6
- [31] Smith, M. and Kohn, R. (1996). Nonparametric regression using Bayesian variable selection. *Journal of Econometrics*, 75(2):317–343. 3.3
- [32] Solo, V. and Noh, J. (2007). An EM algorithm for Rician fMRI activation detection. In *IEEE International Symposium on Biomedical Imaging (ISBI)*, pages 464–467. IEEE. 1
- [33] Tom, S., Fox, C., Trepel, C., and Poldrack, R. (2007). The neural basis of loss aversion in decision-making under risk. *Science*, 315:515–518. 5.2
- [34] Villani, M., Kohn, R., and Giordani, P. (2009). Regression density estimation using smooth adaptive Gaussian mixtures. *Journal of Econometrics*, 153(2):155–173. 3.4
- [35] Villani, M., Kohn, R., and Nott, D. (2012). Generalized smooth finite mixtures. *Journal of Econometrics*, 171(2):121–133. 3.4
- [36] Woolrich, M., Behrens, T., Beckmann, C., Jenkinson, M., and Smith, S. (2004a). Multilevel linear modelling for FMRI group analysis using Bayesian inference. *NeuroImage*, 21:1732–1747. 1
- [37] Woolrich, M. W., Jenkinson, M., Brady, J. M., and Smith, S. M. (2004b). Fully Bayesian spatio-temporal modeling of FMRI data. *IEEE Transactions on Medical Imaging*, 23(2):213–231. 4
- [38] Woolrich, M. W., Ripley, B. D., Brady, M., and Smith, S. M. (2001). Temporal autocorrelation in univariate linear modeling of FMRI data. *NeuroImage*, 14(6):1370 – 1386. 1

7. Appendix A - Implementation

Our heteroscedastic GLM can be launched from a terminal as

```
HeteroGLM fmri.nii.gz -designfiles activitycovariates.txt
-gammacovariates gammacovariates.txt
-ontrialbeta trialbeta.txt -ontrialgamma trialgamma.txt
-ontrialrho trialrho.txt -mask mask.nii.gz
-regressmotion motion.txt
-regressmotionderiv motionderiv.txt
-draws 1000 -burnin 1000 -savefullposterior
```

where 'activitycovariates.txt' states the activity covariates for the design matrix (normally only used for the mean), 'gammacovariates.txt' states the covariates being used to model the variance, 'ontrialbeta.txt' states covariates for which variable selection is performed for the mean, 'ontrialgamma.txt' states covariates for which variable selection is performed for the variance and 'ontrialrho.txt' states variable selection parameters for the autocorrelation. Covariates for intercept and time trends are automatically added internally. A homoscedastic GLM can easily be obtained as a special case, using only a single covariate (the intercept) for the variance. The following nifti files are created; posterior mean of beta and lbeta (for each covariate), posterior mean of gamma and lgamma (for each covariate), posterior mean of rho and lrho (for each AR parameter), and PPMs for each activity covariate. The full posterior of all beta, gamma and rho parameters can also be saved as nifti files.

8. Appendix B - MCMC Details

Variable selection by MCMC in the linear regression model

Let us assume a general multivariate prior $\beta_{\mathcal{I}}|\mathcal{I} \sim N(\mu, \Omega_{\mathcal{I}})$. Now,

$$\begin{aligned} p(\beta, \mathcal{I}|\mathbf{y}, \mathbf{X}, \mathbf{Z}, \cdot) &\propto p(\mathbf{y}|\beta, \mathcal{I}, \mathbf{X}, \mathbf{Z})p(\beta|\mathcal{I})p(\mathcal{I}) \\ &\propto \exp\left(-\frac{1}{2}(\mathbf{y} - \mathbf{X}_{\mathcal{I}}^T\beta_{\mathcal{I}})^T(\mathbf{y} - \mathbf{X}_{\mathcal{I}}^T\beta_{\mathcal{I}})\right) \\ &\times |2\pi\Omega_{\mathcal{I}}|^{-1/2} \exp\left(-\frac{1}{2}(\beta_{\mathcal{I}} - \mu)^T\Omega_{\mathcal{I}}^{-1}(\beta_{\mathcal{I}} - \mu)\right)p(\mathcal{I}), \end{aligned}$$

where $\mathbf{X}_{\mathcal{I}}$ is the matrix formed by selecting the columns of \mathbf{X} corresponding to \mathcal{I} . The conditional likelihood $\exp\left(-\frac{1}{2}(\mathbf{y} - \mathbf{X}_{\mathcal{I}}^T\beta_{\mathcal{I}})^T(\mathbf{y} - \mathbf{X}_{\mathcal{I}}^T\beta_{\mathcal{I}})\right)$ can be decomposed as

$$\begin{aligned} &\exp\left(-\frac{1}{2}\left[(\mathbf{y} - \mathbf{X}_{\mathcal{I}}\hat{\beta}_{\mathcal{I}})^T(\mathbf{y} - \mathbf{X}_{\mathcal{I}}\hat{\beta}_{\mathcal{I}})\right]\right) \\ &\times \exp\left(-\frac{1}{2}\left[(\beta_{\mathcal{I}} - \hat{\beta}_{\mathcal{I}})^T\mathbf{X}_{\mathcal{I}}^T\mathbf{X}_{\mathcal{I}}(\beta_{\mathcal{I}} - \hat{\beta}_{\mathcal{I}})\right]\right) \end{aligned}$$

Multiplying the conditional likelihood by the prior and completing the square ⁴ gives

$$\begin{aligned} p(\beta, \mathcal{I}|\mathbf{y}, \mathbf{X}, \mathbf{Z}, \cdot) &\propto \\ c \cdot \exp\left(-\frac{1}{2}\left[(\beta_{\mathcal{I}} - \tilde{\beta}_{\mathcal{I}})^T(\mathbf{X}_{\mathcal{I}}^T\mathbf{X}_{\mathcal{I}} + \Omega_{\mathcal{I}}^{-1})(\beta_{\mathcal{I}} - \tilde{\beta}_{\mathcal{I}})\right]\right) \\ &\times \exp\left(-\frac{1}{2}\left[(\tilde{\beta}_{\mathcal{I}} - \hat{\beta}_{\mathcal{I}})^T\mathbf{X}_{\mathcal{I}}^T\mathbf{X}_{\mathcal{I}}(\tilde{\beta}_{\mathcal{I}} - \hat{\beta}_{\mathcal{I}})\right]\right) \\ &\times \exp\left(-\frac{1}{2}\left[(\tilde{\beta}_{\mathcal{I}} - \mu)^T\Omega_{\mathcal{I}}^{-1}(\tilde{\beta}_{\mathcal{I}} - \mu)\right]\right)p(\mathcal{I}) \end{aligned}$$

where $c = |2\pi\Omega_{\mathcal{I}}|^{-1/2} \exp\left(-\frac{1}{2}(\mathbf{y} - \mathbf{X}_{\mathcal{I}}\hat{\beta}_{\mathcal{I}})^T(\mathbf{y} - \mathbf{X}_{\mathcal{I}}\hat{\beta}_{\mathcal{I}})\right)$ and $\tilde{\beta}_{\mathcal{I}} = (\mathbf{X}_{\mathcal{I}}^T\mathbf{X}_{\mathcal{I}} + \Omega_{\mathcal{I}}^{-1})^{-1}(\mathbf{X}_{\mathcal{I}}^T\mathbf{X}_{\mathcal{I}}\hat{\beta}_{\mathcal{I}} + \Omega_{\mathcal{I}}^{-1}\mu)$. This shows that

$$\beta_{\mathcal{I}}|\mathcal{I} \sim N(\tilde{\beta}_{\mathcal{I}}, (\mathbf{X}_{\mathcal{I}}^T\mathbf{X}_{\mathcal{I}} + \Omega_{\mathcal{I}}^{-1})^{-1}).$$

Integrating with respect to $\beta_{\mathcal{I}}$ gives

$$\begin{aligned} p(\mathcal{I}|\mathbf{y}, \mathbf{X}, \mathbf{Z}, \cdot) &\propto |\Omega_{\mathcal{I}}\mathbf{X}_{\mathcal{I}}^T\mathbf{X}_{\mathcal{I}} + I|^{-1/2} \\ &\times \exp\left(-\frac{1}{2}(\mathbf{y} - \mathbf{X}_{\mathcal{I}}\hat{\beta}_{\mathcal{I}})^T(\mathbf{y} - \mathbf{X}_{\mathcal{I}}\hat{\beta}_{\mathcal{I}})\right) \\ &\times \exp\left(-\frac{1}{2}\left[(\tilde{\beta}_{\mathcal{I}} - \hat{\beta}_{\mathcal{I}})^T\mathbf{X}_{\mathcal{I}}^T\mathbf{X}_{\mathcal{I}}(\tilde{\beta}_{\mathcal{I}} - \hat{\beta}_{\mathcal{I}})\right]\right) \\ &\times \exp\left(-\frac{1}{2}\left[(\tilde{\beta}_{\mathcal{I}} - \mu)^T\Omega_{\mathcal{I}}^{-1}(\tilde{\beta}_{\mathcal{I}} - \mu)\right]\right)p(\mathcal{I}). \end{aligned}$$

⁴ $(x-a)'A(x-a) + (x-b)'B(x-b) = (x-d)'D(x-d) + (d-a)'A(d-a) + (d-b)'B(d-b)$, where $D = A + B$ and $d = D^{-1}(Aa + Bb)$.