

Evolution in spatial and spatiotemporal variable metapopulations changes a herbivore's host plant range

Authors: De Roissart A¹, Wybouw N^{2,3}, Renault D⁴, Van Leeuwen T^{2,3} & Bonte D^{1,*}

Affiliations:

¹ Ghent University, Dep. Biology, Terrestrial Ecology Unit, K.L. Ledeganckstraat 35, B-9000 Ghent, Belgium

² Ghent University, Dep. Crop Protection, Laboratory of Agrozoology, Coupure Links 653, B-9000 Ghent, Belgium

³ University of Amsterdam, Institute for Biodiversity and Ecosystem Dynamics, Science Park 904, 1098 XH Amsterdam, the Netherlands

⁴ Université de Rennes 1, UMR 6553 ECOBIO CNRS, Avenue du Gal Leclerc 263, CS 74205, 35042 Rennes Cedex, France

***Corresponding author:** Dries Bonte, Ghent University, Dep. Biology, Terrestrial Ecology Unit, K.L. Ledeganckstraat 35, B-9000 Ghent, Belgium. Email: dries.bonte@ugent.be; tel: 0032 9 264 52 13; fax: 0032 9 264 87 94

E-mail address of the co-authors: Annelies.DeRoissart@ugent.be; Dries.Bonte@ugent.be; N.R.Wybouw@uva.nl; Thomas.VanLeeuwen@ugent.be; David.Renault@univ-rennes1.fr

Manuscript type: Original article

Running title: Metapopulation structure and life history evolution

Key-words: metapopulation-level selection, stochasticity, *Tetranychus urticae*

Abstract

The persistence and dynamics of populations largely depends on the way they are configured and integrated into space and the ensuing eco-evolutionary dynamics. We manipulated spatial and temporal variation in patch size in replicated experimental metapopulations of the herbivore mite Tetranychus urticae. Evolution over approximately 30 generations in the spatially and spatiotemporally variable metapopulation induced a significant divergence in life history traits, physiological endpoints and gene expression, but also a remarkable convergence relative to the stable reference metapopulation in traits related to size and fecundity and in its transcriptional regulation. The observed evolutionary dynamics are tightly linked to demographic changes, more specifically frequent episodes of resource shortage, and increased the reproductive performance of mites on tomato, a challenging host plant. This points towards a general, adaptive stress response in stable spatial variable and spatiotemporal variable metapopulations that pre-adapts a herbivore arthropod to novel environmental stressors.

Changes in land-use levy a strong pressure on our natural and pristine habitat and leads to habitat loss and isolation, which are both a major threat for biodiversity¹. Species conservation therefore relies largely on optimal reserve planning which in turn is rooted within the principles of metapopulations^{2,3}. This concept defines population-extinction dynamics and eventually extinction thresholds within in networks of interconnected habitat patches. Most spatially structured populations can be classified as *patchy* or *mainland-island* metapopulations⁴, and the omnipresence of classical Levin's metapopulations has been recently questioned⁵. This spatial variation in habitat availability not only affects patch occupancy dynamics, it also impacts the local- and metapopulation-level demography. Some of us⁶ demonstrated experimentally that spatial variation in habitat availability decreases variance in metapopulation size at the metapopulation level. Conversely, spatiotemporal variation in habitat availability increases patch extinction rates, but decreases local population and metapopulation sizes. These demographic changes minimised metapopulation-level variability in mainland-island metapopulations, relative to classical and patchy ones.

Because of these changes in population dynamics, selection pressures in metapopulations are expected to act on more than one level of population structure⁷. For instance, in classical metapopulations where local population extinctions occur regularly, increased dispersal rates are selected since long-term survival is only possible if genotypes are able to re-colonise patches from where they have become locally extinct. With increasing asymmetry in patch size, however, dispersal will evolve to lower rates because benefits of dispersal are only prevalent for a minority of the individuals⁸. Additional and/or alternative adaptive strategies might also evolve through the adjustment of sex-ratio⁹, age-at-death¹⁰ and density-dependency¹¹ according to changes in spatial structure and associated variation in the prevalence and strength of local resource competition^{12–14} and other stressors^{15,16}.

While evolutionary theory to date is centred on single trait dynamics, multivariate selection in life history and physiology is anticipated in response to changes in spatial habitat configuration. These evolutionary responses then simultaneously feedback on the ecological dynamics, rendering both ecology and evolution heavily intertwined. We now begin to understand such eco-evolutionary dynamics in either natural or experimental

metapopulations¹⁷. The importance of eco-evolutionary dynamics is most obvious in metapopulations where dispersal determines the genetic composition of different populations. Seminal examples include the Glanville fritillary¹⁸ or stick insect metapopulations¹⁹. Often, these eco-evolutionary dynamics lead to evolutionary rescue, the process where adaptive evolution allows a population²⁰, metapopulation^{17,21} or an expanding population²² to recover from negative growth as a result from environmental change²⁰. Evolutionary rescue is known to be strongly determined by demographic and genetic factors of local populations, but also by entire metapopulation changes²³.

The genetic basis of life history differentiation can now be disentangled by the development of several -omic approaches. Transcriptomic analyses may uncover genes that significantly alter their transcript levels as a response to the implemented selection pressure and provide detailed insights on the pleiotropic effects underlying phenotypic. For instance, in *Drosophila melanogaster*, many genes that are up- or downregulated in response to stress are equally associated with mobility and aggression²⁴. In the spider mite *Tetranychus urticae*, transcriptomic analysis of populations that developed pesticide resistance or that were exposed to challenging host plants reveals the presence of common adaptive responses and identified key gene candidates for xenobiotic adaptation in this polyphagous mite²⁵

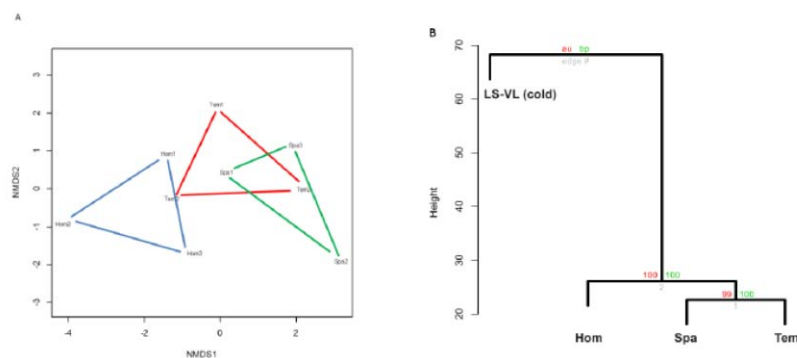
Experimental evolution in artificial metapopulations provides a unique formal test to understand to which degree spatial variation in habitat availability affects life history divergence²⁶. Using this approach, we studied phenomic divergence of replicated spider mite populations *T. urticae* that evolved in three types of artificial metapopulations. Following theoretical expectations outlined above, and the earlier documented demographic changes⁶ we derived the following predictions on life history evolution for mainland-island and classical metapopulations, relative to patchy metapopulations where habitat is constantly available in time and space:

1. Asymmetry in patch and population size in mainland-island metapopulations selects for lower dispersal rates, while in classical metapopulations, the spatiotemporal variation in population size leads to higher evolved dispersal rates

2. Increased local extinction rates and local population variability in classical metapopulation selects for faster life histories, i.e. increased fecundity, decreased longevity and/or reduced developmental time
3. Low local and metapopulation variability in mainland-island metapopulations increase local competition and therefore select for a more male-biased sex ratio and/or increased developmental time (age-at-maturity).

Table 1: Results for fixed effects from mixed linear models with fecundity, developmental time, sex-ratio, longevity and juvenile survival as response variable.

Factor	Num df	Den df	F	p
Daily fecundity				
Treatment	2	8.732	9.34	0.0068
Day	1	1891	693.77	<.0001
Day*Treatment	2	1891	2.99	0.0507
Total fecundity				
Treatment	2	106.2	6.79	0.0017
Sex-Ratio				
Treatment	2	189.8	3.55	0.0308
Developmental time				
Treatment	2	2228	4.09	0.0168
Sex	1	228	10.78	0.0010
Treatment*Sex	2	2228	0.25	0.7782
Longevity				
Treatment	2	158	5.43	0.0053
Juvenile survival				
Treatment	2	7.201	0.25	0.7882

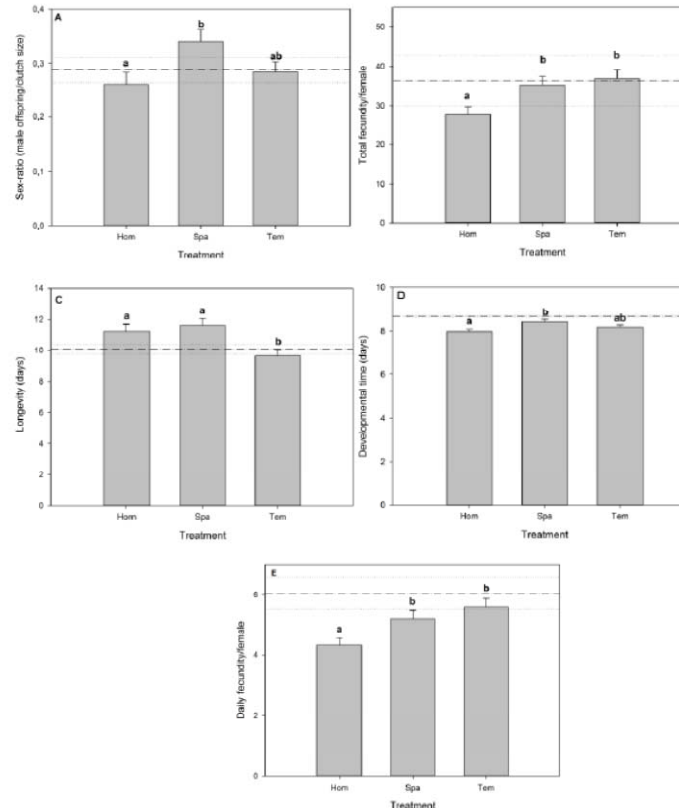


Results

Population-level divergence in life history traits

Experimental evolution caused significant divergence in life history traits of the variable treatments with the homogeneous treatment (PERMANOVA $F_2 = 2.75$; $p=0.03$) (Fig. 1A). MANOVA analyses showed sex-ratio ($F_2=7.77$; $p=0.02$) and fecundity ($F_2=10.35$; $p=0.01$) as the two main life history endpoints underlying this divergence. A detailed analysis on the individual trait distribution after experimental evolution confirmed divergence in fecundity and sex ratio, but also in longevity (Table 1; Fig 2). An analysis of the trait variation at the start of the experiment is provided in supplementary material S2.

Figure 2

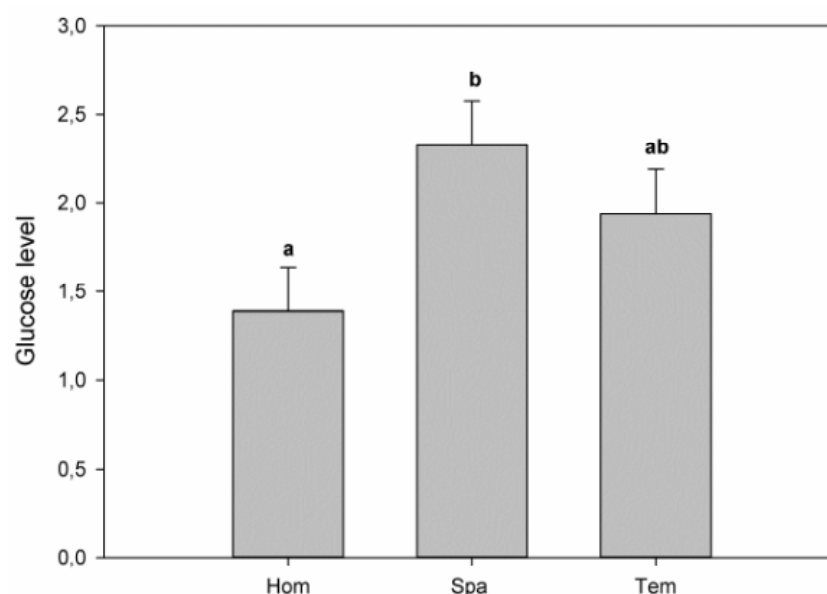


The average proportion of male offspring was higher in clutches originating from the SPA metapopulations ($0.34 \pm 0.02SE$) relative to the HOM ($0.26 \pm 0.02SE$). Mites from the SPA and TEM treatment evolved a high daily fecundity ($t=-3.79$; $p=0.01$) than those from the HOM treatment (respectively $5.21 \pm 0.28SE$ and $5.59 \pm 0.28SE$ versus $4.31 \pm 0.25SE$). Similarly, mites that evolved in the SPA ($35.20 \pm 2.01SE$) and TEM treatment ($36.91 \pm 2.1SE$) had a

significantly higher fecundity ($t=-3.53$, $p=0.0014$) than those from the reference population HOM ($27.61 \pm 2.01SE$).

Mites that evolved in the TEM metapopulations died earlier (after $9.65 \pm 0.42SE$ days) than mites from homogeneous (HOM) metapopulations (after $11.24 \pm 0.45SE$ days) and spatial variable (SPA) metapopulations (after $11.62 \pm 0.47SE$ days) (Fig. 2C). Under the prevailing lab conditions, males developed in 7.99 days on average while the female reached maturity after 8.40 days ($t=-3.28$; $p=0.0010$). Mites from homogeneous metapopulations reached maturity earlier (7.97 ± 0.12) than mites from the spatially heterogeneous (SPA) metapopulation (8.43 ± 0.11) ($t=-2.85$; $p=0.012$) (Fig. 2D). The interaction between sex and treatment was not significant ($F_{2,2228}=0.25$; $p=0.78$). No significant differences in juvenile survival of mites among treatments were observed ($F_{2,7,201}=0.25$; $p=0.79$), and no differences were detected in aerial dispersal propensity ($F_{2,5,185}=0.02$; $p=0.98$).

The simulated growth rate at the start of the experiment was 3.56 (SD=0.19). After experimental evolution, growth rates were slightly lower in the homogeneous metapopulation treatment relative to the other two, but this difference was not significant based on the inferred 95% confidence intervals ($r_{HOM}=3.38$, SD=0.21; $r_{TEMP}=3.52$; SD=0.20; $r_{SPA}=3.55$, SD=0.19).



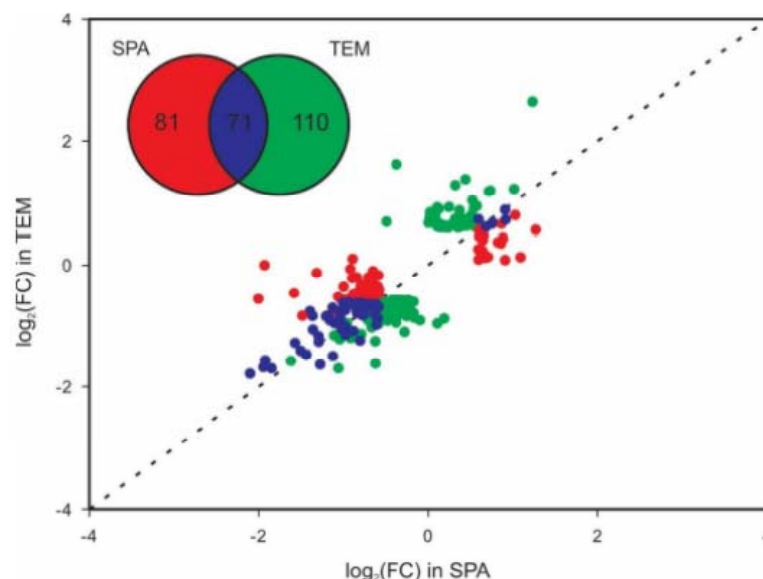
Divergence in physiological endpoints

Although not significant ($F_{2,32}=3.08$; $p=0.06$), a trend towards a lower mass per 50 mites was observed for mites from homogeneous metapopulations ($424 \pm 25\text{SE } \mu\text{g}$) compared to mites from metapopulations with spatial ($510 \pm 25\text{SE } \mu\text{g}$) or spatiotemporal variation ($441 \pm 31\text{SE } \mu\text{g}$). Glucose levels were significantly different among the metapopulation treatments ($F_{2,67}=3.52$; $p=0.03$; Fig. 3), with the lowest levels for HOM ($1.39 \pm 0.25\text{SE}$) relative to those from SPA ($2.33 \pm 0.25\text{SE}$) ($t=-2.64$; $p=0.027$). No significant differences in trehalose ($F_{2,60}=0.43$; $p=0.51$) or triglyceride level were observed among treatments ($F_{2,56}=2.07$; $p=0.14$).

Divergence in gene expression

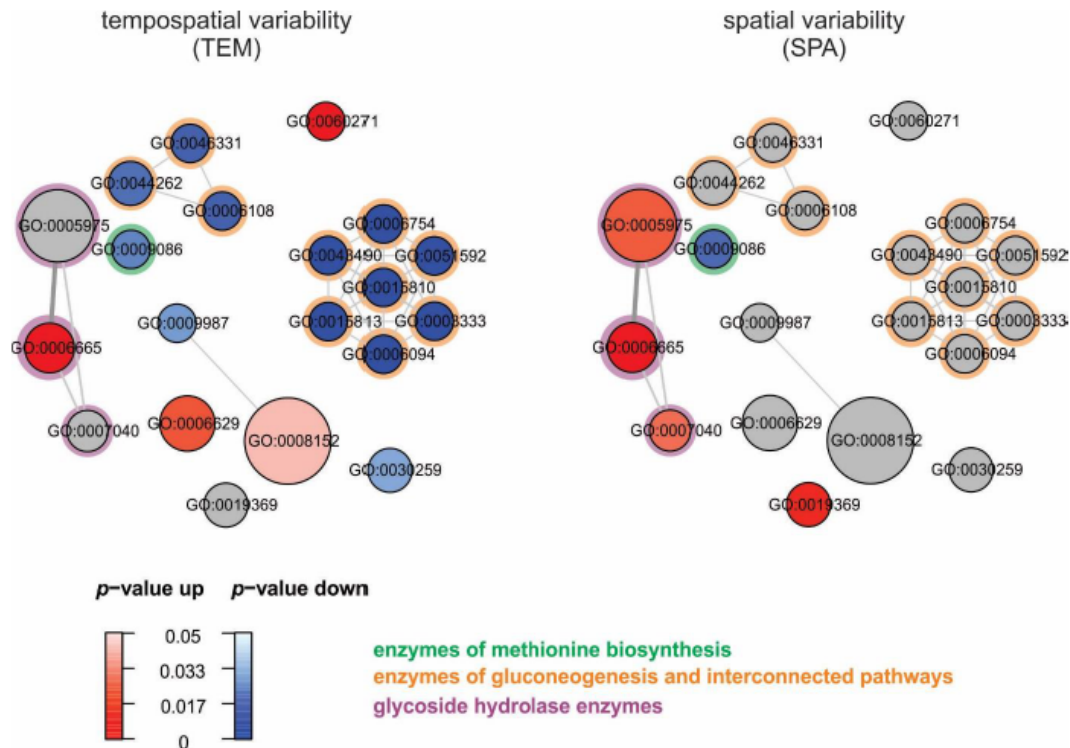
Based on genome-wide gene-expression data of adult female mites raised under common garden for two generations, SPA and TEM treatments diverged from the control HOM regime, in a parallel direction (Fig. 1B). We found 152 and 181 differentially expressed genes in SPA and TEM lines, respectively, using the HOM treatment as reference (FDR-corrected p -value <0.05 and \log_2 -converted $\text{FC}>0.585$) (Fig. 4). Fig. S1 depicts the expression patterns of the triplicated lines within each treatment separately. Of these differentially expressed genes, 81.6% and 70.7% exhibited down-regulation in SPA and TEM, relative to HOM, respectively (Fig. 4, Fig. S2). Pearson correlation indicated that the altered transcript levels in SPA and TEM were significantly correlated ($\rho=0.80$, $\text{df}=260$, $p<0.0001$).

Figure 4



Using Blast2GO²⁷, a total of 164 Biological Process GO-sets were assigned to the differentially expressed genes that were associated with evolution in the TEM and SPA regimes. Approximately half of these GO-terms (n=84) were present in both treatments. Twenty gene sets were significantly up- and down-regulated in either the SPA or TEM regimes, relative to HOM (Fig. 5). The associated labels of the GO-IDs are listed in Table S1. Using this GSA, we observed a convergence in the down-regulation of genes involved in methionine biosynthesis (Fig. S3). In contrast, the transcriptional responses to TEM and SPA selection pressures diverged in the gene sets of which members were associated with gluconeogenesis and interconnected pathways and in gene sets of which members code for glycoside hydrolases (Fig. 5 and Fig. S2).

Figure 5

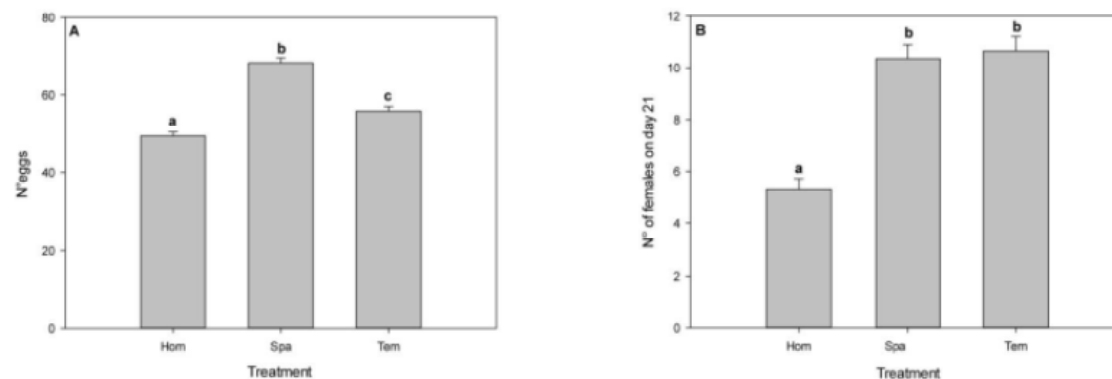


Population performance on novel hosts

After one week of challenging the novel host, mite survival did not differ according to the spatial setting to which they evolved ($F_{2,122}=2.19$; $p=0.12$). However, significant differences in fecundity were observed ($F_{2,122}=66.81$; $p<0.0001$), with a lower number of deposited eggs in mites that evolved in the homogeneous populations ($49.33 \pm 1.07SE$ eggs) relative to SPA

($68.29 \pm 1.29\text{SE}$ eggs) and TEM (55.83 ± 1.17 eggs). All pairwise differences were significant (Fig.6A). After three weeks, the first cohort of offspring matured which differed in population size among treatments ($F_{2,5.635}=5.83$; $p=0.04$; Fig. 6B). Again, population sizes were lowest in mites originating from HOM ($5 \pm 0.90\text{SE}$) relative to SPA ($10.26 \pm 1.71\text{SE}$) and TEM ($10.62 \pm 1.77\text{SE}$).

Figure 6



Discussion

While there is an increasing awareness that changes in spatial structure affect population dynamics, and that these ecological dynamics interact with evolutionary trajectories, there is a limited understanding of how these reciprocal eco-evolutionary interactions are governed by metapopulation-level selection pressures. We followed a phenomic approach in which we contrasted life history traits, physiological endpoints and transcriptomes from mites that evolved in classical and mainland-island metapopulations with those that evolved in stable patchy metapopulations. Using stable patchy metapopulations (HOM) as a reference, mites from the spatially (mainland-island, SPA) and spatiotemporally (classical, TEM) variable metapopulations showed evolutionary convergence in traits related to size and fecundity and in its transcriptional regulation of methionine biosynthesis. However, these mites equally evolutionary diverged in longevity, sex ratio, glucose content and in the expression of genes involved in gluconeogenesis and that code for glycoside hydrolases (Fig. S2).

Relative to HOM, spatiotemporal variation in habitat availability in the classical metapopulations (TEM) generated high levels of local variation in population density and on average lower metapopulation sizes due to frequent patch extinctions and lagged colonisation dynamics⁶. Mites evolving in these metapopulations showed a significant down-regulation of transcription of genes associated with gluconeogenesis and ATP production (Fig. S2). Genes of the gluconeogenesis pathway affect various metabolic fluxes and energy production and are known to influence life history traits (e.g. dispersal, life span and basal metabolic rate), which determine survival in a metapopulation structure. Here, mite adaptation to spatiotemporal dynamics led to an increased fecundity and reduced longevity, which may have been mediated by the transcriptional changes in their gluconeogenesis pathway (Fig S2). These altered traits reflect a change in resource allocation between survival and reproduction²⁸, leading to the evolution of more *r*-strategic traits^{29,30}.

Mainland-island metapopulations (SPA) are characterised by both a low local and metapopulation-level variability in population size, large metapopulation sizes and low metapopulation-level dispersal⁶. We detected a similar trend of reduced dispersal at the individual level -in line with theoretical predictions²⁹, but more importantly an evolution

towards more male biased, fecund and slowed aging strategies relative to mites from patchy metapopulations (HOM). Sex ratio changes are known to evolve in response to local resource¹² or mate competition⁹. While mites from stable metapopulations with low dispersal and stable local population sizes are expected to evolve more female biased sex-ratios due to elevated kin-competition, our results point in the direction of resource competition. Spider mites show scramble competition, with fast resource depletion when population sizes are high³¹. As such, slowing down population growth by extending age-at-maturity^{14,32} and more male-biased sex ratios^{33,34} can be considered as an adaptive strategy under stable conditions and elevated resource competition. The significantly higher transcription in gene sets that code for glycoside hydrolases, enzymes which are crucial for the digestion of complex carbohydrates in an arthropod herbivore's diet³⁵, can be regarded as a consequence of mite adaptation to the stable conditions. Interestingly, two of the differentially expressed *GH* genes (*tetur29g01280* and *tetur29g01230*) were horizontally transferred and code for glycoside hydrolases of the GH32 family³⁶.

Despite the evolved divergent phenotypic profiles reported above, life history traits and genome-wide gene-expression showed an overall convergence in the spatial and spatiotemporal variable metapopulation configurations, relative to the stable patchy one. This was unexpected since the HOM (meta-)population dynamics are intermediately situated between the SPA and TEM regimes. The convergence is apparent in (a) similar evolution of higher fecundity rates and to a lesser degree sex-ratio, age and mass-at-maturity, (b) and increased glucose content and (c) the identical direction of the differential expression of 71 genes (including genes of the methionine anabolic pathway; see Fig. S3). Increased fecundity shows trade-offs with longevity and sex ratio in respectively the TEM and SPA metapopulation. Therefore, mites did not evolve an increased per capita growth rate and on average reached maturity at later age. A slower growth, larger size at maturity are typically traits associated with competitive environments³⁷. For the SPA treatment, such increased competitive interactions have been discussed higher, but densities were on average lower in the TEM treatments⁶, rendering high densities as a common competitive environment a poor explanation for the detected convergence. In relative terms, however, high densities in the SPA treatments and resource limitation combined with unoccupied patches in the TEM treatment must have led to more frequent episodes of *per capita* resource shortage, relative

to the stable HOM metapopulations. Elevated glucose levels have been associated with responses to cope with increased starvation resistance in a ground beetle³⁸ and are typically associated with low metabolic rates under food limitation^{39,40}. The decreased developmental rates, the higher glucose levels of mites from the SPA and TEM are thus in concordance with evolutionary trajectories towards stress resistance⁴¹.

Our theory of a general stress response was further supported by the transcriptional responses. First, identical expression profiles of a GO-term related to methionine synthesis indicates a common response that could interfere with methylation processes. Such methylation is often induced by general, oxidative stresses, for instance –and in line with our findings- due to compensatory growth after food restriction⁴². Moreover, the more frequent resource shortage experienced by TEM and SPA populations may have restricted their access to sulfur-rich proteins containing methionine from *P. vulgaris*⁴³. During the common garden experiment, the increased access to the beans for SPA and TEM may have reduced the need for methionine synthesis, an amino acid that has been proven a key player in driving fecundity in *Drosophila melanogaster*⁴⁴.

Significantly up-and down-regulated gene sets upon adaptation to (spatio)temporal stress included sets that are associated with basal metabolic pathways. Genetic changes in these pathways are a common response to environmental stressors, with enzymes of the gluconeogenesis/glycolysis and citric acid pathways as one of the prime targets⁴⁵.

Adaptive metabolic changes are known to lead to the development of cross-tolerance in organisms, enabling organisms to cope with unfamiliar stressors. We demonstrated that evolutionary dynamics resulting from changes of the metapopulation spatial structure, pre-adapt mites to cope with a challenging novel host. This is an important finding which definitively needs more study in other (model) organisms. In general, such an evolutionary response is expected to have a strong impact on community- and food web dynamics under natural conditions¹⁹. We show that altered population dynamics due to changes in metapopulation spatial structure may induce general stress resistance responses. Since multiple stressors are jointly operational under global change, evolutionary responses towards changes in spatial structure can thus enable organisms of some species to cope with

additional stressors like changes in habitat quality and pollution (i.e., evolutionary rescue;
²³).

Materials and methods

Experimental setup of the artificial metapopulations

Metapopulation dynamics of *Tetranychus urticae* were studied using experimental microcosms. We used as a base population the “LS-VL” *T. urticae* strain, because it is known to be highly evolvable due to its genetic variability^{46,47}. Artificial metapopulations consisted of a transparent plastic box with 9 patches arranged in a 3 x 3 lattice. We constructed three types of artificial metapopulations with an equal metapopulation-level carrying capacity but varying spatial configuration of the patches. Patches were detached bean (*Phaseolus vulgaris* L.) leaves placed on a Tanglefoot layer in closed boxes. This hostile matrix prevents mites from leaving the patches. Bean leaves were renewed on a weekly basis to avoid starvation of the mites. The size of the bean leaves introduced to each patch was dependent upon the treatment. Two times a week, for 8 hours a wind current (1.5m/s) was induced by a fan and allowed aerial dispersal. Three metapopulation types were installed each of which was replicated three times:

- i) a patchy metapopulation consisting of nine patches weekly refreshed with leaves of 20 cm² (spatially homogenous distribution of resources; further referred to as HOM)
- ii) a mainland-island metapopulation consisting of three patches of standard leaf size (20 cm²) and three of double size; another three patches of these metapopulations remained constantly empty (spatial heterogeneous distribution of resources; further referred to as SPA)
- iii) a spatiotemporal heterogeneous metapopulation (further referred to as TEM) in which we assigned nine single-patch resources (standard leaf) randomly to one of the nine patches. Due to this algorithm, the distributions of the resources (and thus local carrying capacity or island size) changed weekly among the nine patches and varied between zero (no resource renewal and local extinction) and double or exceptionally triple island size. In consequence, patch sizes and thus local carrying capacities fluctuated over time and space, but we ensured again a constant metapopulation carrying capacity (9 x 20 cm²) over time.

At the beginning of the experiment, 20 randomly collected adult female mites, from the base population, were assigned to each patch within each metapopulation type and allowed to establish the triplicated populations. All metapopulations were kept under controlled conditions (23°C, 16:8 LD photoperiod, 85% humidity).

Quantification of mite life-history

Spider mite life-history traits were measured at the initiation of the experiment and after 10 months, corresponding to approximately 30 mite generations. All traits were measured on F2 mites (raised for two generations in common garden on detached leaf discs) to minimise maternal and environmental effects caused for instance by local conditions of crowding. Young inseminated females of each experimental metapopulation were individually allowed to oviposit on bean leaf discs. Leaf discs were placed with the abaxial part upwards on moistened filter paper to prevent mites from escaping and to maintain leaf turgor. Different life history parameters of the descendants were recorded daily: juvenile survival, developmental time (time from egg until the adult stage), fecundity (daily number of eggs), longevity and sex-ratio. Since spider mites deposit the majority of their eggs during the first seven days after maturity, we monitored fecundity only during that period. Dispersal propensity of the mites was assessed by transferring mated females to test arenas for trials of aerial dispersal (after two whole generations under common garden to avoid confounding maternal effects). The experimental setup for aerial dispersal assessment was identical to the one applied in⁴⁸ (details in supplementary material S1).

Mite performance

Mite performance was followed by quantifying rate of intrinsic growth as a proxy of fitness¹³. To detect possible differences in individual performance between treatments, an integrated individual-level fitness measure, the rate of intrinsic growth (r_m), was calculated by combining the estimated parameter distributions of the different life history parameters according (see statistical analyses) to the equation $\sum e^{-(r_m)x} l_x f_x = 1$ (with l_x survival till maturity x and f_x the number of female offspring at age x) which represents the contribution of each female to the number of females in the subsequent generation. We performed 10000 simulations and reported the mean value and standard deviation while testing its

significance in comparing whether 2.5% tails of the distribution overlap. We additionally measured a set of physiological endpoints (mass, glucose, trehalose and triglycerid levels) after the common garden treatment at the start of the experiment and after 30 generations of selection in a metapopulation context as indicators for mite performance. All physiological parameters were measured following³⁸ on F2 mites (see suppl. material S1).

Differential gene expression after experimental evolution

To examine the effects of metapopulation structure on the mite transcriptome, Agilent dual colour gene expression micro-array analysis was performed on female mites raised for two generations in a common garden of every selection regime. The microarray data have been deposited in the Gene Expression Omnibus (GEO) (accession number: GSE55623). For the hierarchical clustering, data of previous *T. urticae* studies were incorporated^{33,49}. Final statistical processing and analysis was conducted in limma (Smyth 2005). Gene Ontology (GO) annotation was executed using Blast2GO software²⁷. Using the Blast2GO generated annotation and the statistical output of limma as input, Gene Set Analysis (GSA) was performed with the Bioconductor package piano (Parametric Analysis of Gene set Enrichment, PAGE)⁵⁰. More details of the gene expression and GO-term analysis are provided in supplementary material S1.

Performance on a challenging new host

Our LS-VL base population has been maintained on bean for more than 10 years. We assessed performance on a novel suboptimal host by quantifying isofemale growth rate on tomato (*Solanum lycopersicum*; variety Moneymaker) grown under controlled laboratory conditions (23°C, 16:8 L:D photoperiod). Experimental arenas were constructed with leaves from 4-week old tomato plants. Moist tissue paper was used to cover 10 cm² leaf edges that prevented mites from escaping. Twenty fertilized F2 females (raised for two generations in common garden to reduce maternal and environmental effects) from each artificial metapopulation were placed on a leaf-arena and allowed to establish a population. All leaf-arenas were kept under controlled conditions (23°C, 16:8 L:D photoperiod). Population growth was assessed weekly for 3 weeks by counting the number of eggs, juveniles, adult males and females.

Statistical analysis

Because the measured traits follow different statistical distributions, we first tested for multivariate differences in the measured traits after experimental evolution by applying a Permutational Multivariate Analysis of Variance (PERMANOVA). Because our measurements were taken with different units on different scales, the correctly estimated replicate-level averages of the life history and physiological endpoints (see GLMM further) were scaled prior to PERMANOVA analysis based on Euclidean distances among replicates belonging to one of the three metapopulation treatments (PERMANOVA; with ADONIS function in R;⁵¹). To visualise metapopulation divergence based on life history, Nonmetric Multidimensional Scaling (NMDS) analyses were performed on the scaled distance matrix (all life history and physiological traits) using the METAMDS function (vegan library, R.2.15.1;). The significantly diverging traits were subsequently identified by a Multivariate Analysis of Variance (MANOVA) on the scaled averaged data per replicate.

We examined how metapopulation type affected the different life history traits and physiological endpoints using generalized linear mixed models (GLMM). The model included metapopulation type (HOM, SPA, TEM) as fixed factor and each individual metapopulation as a random effect to control for dependency among replicates from each metapopulation treatment. Depending on the dependent variable, a Gaussian (all physiological endpoints), Poisson (fecundity, developmental time, longevity and population size on the novel host) or binomial error (sex ratio, juvenile mortality) structure was modelled with appropriate link functions. Non-significant contributions ($P > 0.05$) were removed by backwards procedure. Effective degrees of freedom were estimated using Kenward-Rogers procedure. All analyses were conducted with SAS 9.3 (SAS Institute Inc 2006) by using the GLIMMIX procedure.

Acknowledgements

This project was funded by FWO projects G.0610.11 and G.0093.12N and Belspo-IAP project Speedy. ADR was funded by BOF-Ugent. NW was supported by the Institute for the Promotion of Innovation by Science and Technology in Flanders (IWT, grant

IWT/SB/101451). DR was supported by the Observatoire des Sciences de l'Univers de Rennes (OSUR).

References

1. Dirzo, R. & Raven, P. H. GLOBAL STATE OF BIODIVERSITY AND LOSS. *Annu. Rev. Environ. Resour.* **28**, 137–167 (2003).
2. Levins, R. The effect of random variations of different types on population growth. *Proc. Natl. Acad. Sci. U. S. A.* **62**, 1061–1065 (1969).
3. Hanski, I. Metapopulation dynamics. *Nature* **396**, 41–49 (1998).
4. Harrison, S. & Taylor, A. D. in *Metapopulation biology: ecology, genetics, and evolution* 27–42 (1997). at <http://scholar.google.com/scholar?hl=en&btnG=Search&q=intitle:Empirical+Evidence+for+Metapopulation+Dynamics#0>
5. Fronhofer, E. A., Kubisch, A., Hilker, F. M., Hovestadt, T. & Poethke, H. J. Why are metapopulations so rare? *Ecology* **93**, 1967–1978 (2012).
6. De Roissart, A., Wang, S. & Bonte, D. Spatial and spatiotemporal variation in metapopulation structure affects population dynamics in a passively dispersing arthropod. *J. Anim. Ecol.* (2015). doi:10.1111/1365-2656.12400
7. Olivieri, I., Couvet, D. & Gouyon, P. H. The genetics of transient populations: Research at the metapopulation level. *Trends Ecol. Evol. (Personal Ed.)* **5**, 207–210 (1990).
8. Travis, J. M. J. & Dytham, C. Habitat persistence, habitat availability and the evolution of dispersal. *Proc. R. Soc. B Biol. Sci.* **266**, 723 (1999).
9. Macke, E., Magalhaes, S., Bach, F. & Olivieri, I. Experimental Evolution of Reduced Sex Ratio Adjustment Under Local Mate Competition. *Science* **334**, 1127–1129 (2011).
10. Dytham, C. & Travis, J. Evolving dispersal and age at death. *Oikos* **113**, 530–538 (2006).
11. Bierbaum, Mueller & Ayala. Density-dependent evolution of life-history traits in *Drosophila melanogaster*. *Evolution (N. Y.)* **43**, 382–392 (1989).
12. Clark, A. B. Sex ratio and local resource competition in a prosimian primate. *Science* **201**, 163–5 (1978).

13. Cameron, T. C., O'Sullivan, D., Reynolds, A., Piernney, S. B. & Benton, T. G. Eco-evolutionary dynamics in response to selection on life-history. *Ecology Letters* **16**, 754–763 (2013).
14. Cameron, T. C., Plaistow, S., Mugabo, M., Piernney, S. B. & Benton, T. G. *Eco-Evolutionary Dynamics in a model system. Advances in Ecological Research* **50**, (Elsevier, 2014).
15. Margulis, L. & Sagan, D. *What Is Life?* (University of California Press, 2000). at <<http://www.ucpress.edu/book.php?isbn=9780520220218>>
16. Parsons, P. A. Environments and evolution: interactions between stress, resource inadequacy and energetic efficiency. *Biol. Rev. Camb. Philos. Soc.* **80**, 589–610 (2005).
17. Bell, G. & Gonzalez, A. Adaptation and evolutionary rescue in metapopulations experiencing environmental deterioration. *Science* **332**, 1327–1330 (2011).
18. Hanski, I. & Mononen, T. Eco-evolutionary dynamics of dispersal in spatially heterogeneous environments. *Ecol. Lett.* **14**, 1025–34 (2011).
19. Farkas, T. E., Mononen, T., Comeault, A. A., Hanski, I. & Nosil, P. Evolution of camouflage drives rapid ecological change in an insect community. *Curr. Biol.* **23**, 1835–1843 (2013).
20. Gomulkiewicz, R. & Holt, R. D. When does Evolution by Natural Selection Prevent Extinction? *Evolution* **43**, 201–207 (1995).
21. Travis, J. M. J. *et al.* Dispersal and species' responses to climate change. *Oikos* **122**, 1532–1540 (2013).
22. Boeye, J., Travis, J. M. J., Stoks, R. & Bonte, D. More rapid climate change promotes evolutionary rescue through selection for increased dispersal distance. *Evol. Appl.* **6**, 353–364 (2013).
23. Carlson, S. M., Cunningham, C. J. & Westley, P. A. H. Evolutionary rescue in a changing world. *Trends in Ecology and Evolution* **29**, 521–530 (2014).
24. Wheat, C. W. in *Dispersal ecology and evolution* (eds. Clobert, J., Baguette, M., Benton, T. & Bullock, J.) 95–107 (Oxford University Press, 2012). at <<http://oxfordindex.oup.com/view/10.1093/acprof:oso/9780199608898.003.0008>>
25. Dermauw, W. *et al.* A link between host plant adaptation and pesticide resistance in the polyphagous spider mite *Tetranychus urticae*. *Proc. Natl. Acad. Sci. U. S. A.* **110**, E113–22 (2013).
26. Kawecki, T. J. *et al.* Experimental evolution. *Trends in Ecology & Evolution* **27**, 547–560 (2012).

27. Conesa, A. *et al.* Blast2GO: A universal tool for annotation, visualization and analysis in functional genomics research. *Bioinformatics* **21**, 3674–3676 (2005).
28. Magalhães, S., Fayard, J., Janssen, A., Carbonell, D. & Olivieri, I. Adaptation in a spider mite population after long-term evolution on a single host plant. *J. Evol. Biol.* **20**, 2016–2027 (2007).
29. Ronce, O., Perret, F. & Olivieri, I. Landscape dynamics and evolution of colonizer syndromes: Interactions between reproductive effort and dispersal in a metapopulation. *Evol. Ecol.* **14**, 233–260 (2000).
30. Wheat, C. W. & Hill, J. Pgi: the ongoing saga of a candidate gene. *Curr. Opin. Insect Sci.* **4**, 42–47 (2014).
31. Krips, O. E., Witul, A., Willems, P. E. L. & Dicke, M. Intrinsic rate of population increase of the spider mite *Tetranychus urticae* on the ornamental crop gerbera: intraspecific variation in host plant and herbivore. *Entomol. Exp. Appl.* **89**, 159–168 (1998).
32. Monro, K. & Marshall, D. J. Faster is not always better: selection on growth rate fluctuates across life history and environments. *Am. Nat.* **183**, 798–809 (2014).
33. Zhurov, V. *et al.* Reciprocal responses in the interaction between *Arabidopsis* and the cell-content-feeding chelicerate herbivore spider mite. *Plant Physiol.* **164**, 384–99 (2014).
34. Johnson, C. N. Dispersal and the sex ratio at birth in primates. *Nature* **332**, 726–8 (1988).
35. Terra, W. R. & Ferreira, C. Insect digestive enzymes: properties, compartmentalization and function. *Comp. Biochem. Physiol. Part B Comp. Biochem.* **109**, 1–62 (1994).
36. Grbić, M. *et al.* The genome of *Tetranychus urticae* reveals herbivorous pest adaptations. *Nature* **479**, 487–92 (2011).
37. Kawecki, T. J. Age and size at maturity in a patchy environment - fitness maximization versus evolutionary stability. *Oikos* **66**, 309–317 (1993).
38. Laparie, M., Larvor, V., Frenot, Y. & Renault, D. Starvation resistance and effects of diet on energy reserves in a predatory ground beetle (*Merizodus soledadinus*; Carabidae) invading the Kerguelen Islands. *Comp. Biochem. Physiol. - A Mol. Integr. Physiol.* **161**, 122–129 (2012).
39. Božič, J. & Woodring, J. Effect of activity on the haemolymph sugar titres in honey bees. *J. Apic. Res.* (2015). at <http://www.tandfonline.com/doi/abs/10.1080/00218839.1997.11100928>

40. Packard, G. C. & Boardman, T. J. The use of percentages and size-specific indices to normalize physiological data for variation in body size: wasted time, wasted effort? *Comp. Biochem. Physiol. Part A Mol. Integr. Physiol.* **122**, 37–44 (1999).
41. Sulmon, C. *et al.* Abiotic stressors and stress responses: What commonalities appear between species across biological organization levels? *Environ. Pollut.* **202**, 66–77 (2015).
42. De Block, M. & Stoks, R. Compensatory growth and oxidative stress in a damselfly. *Proc. Biol. Sci.* **275**, 781–5 (2008).
43. George, A. A., de Lumen, B. O., Whitaker, J. R. & Sgarbieri, V. C. Methionine-containing proteins in two *Phaseolus vulgaris* cultivars with different methionine bioavailabilities. *Plant Foods Hum. Nutr.* **43**, 225–232 (1993).
44. Zajitschek, F., Zajitschek, S. R. K., Friberg, U. & Maklakov, A. a. Interactive effects of sex, social environment, dietary restriction, and methionine on survival and reproduction in fruit flies. *Age (Dordr.)* **35**, 1193–204 (2013).
45. Marden, J. H. Nature’s inordinate fondness for metabolic enzymes: Why metabolic enzyme loci are so frequently targets of selection. *Mol. Ecol.* **22**, 5743–5764 (2013).
46. Van Leeuwen, T. *et al.* Mitochondrial heteroplasmy and the evolution of insecticide resistance: non-Mendelian inheritance in action. *Proc. Natl. Acad. Sci. U. S. A.* **105**, 5980–5 (2008).
47. Fronhofer, E. A., Stelz, J. M. & Lutz, E. SPATIALLY CORRELATED EXTINCTIONS SELECT FOR LESS EMIGRATION BUT LARGER DISPERSAL DISTANCES IN THE SPIDER MITE TETRANYCHUS URTICAE. *Evolution (N. Y.)* **68**, 1838–1844 (2014).
48. Li, J. & Margolies, D. C. Responses to direct and indirect selection on aerial dispersal behaviour in *Tetranychus urticae*. *Heredity (Edinb.)* **72**, 10–22 (1994).
49. Bryon, A., Wybouw, N., Dermauw, W., Tirry, L. & Van Leeuwen, T. Genome wide gene-expression analysis of facultative reproductive diapause in the two-spotted spider mite *Tetranychus urticae*. *BMC Genomics* **14**, 815 (2013).
50. Våremo, L., Nielsen, J. & Nookaew, I. Enriching the gene set analysis of genome-wide data by incorporating directionality of gene expression and combining statistical hypotheses and methods. *Nucleic Acids Res.* **41**, 4378–91 (2013).
51. Anderson, M. J. PERMANOVA Permutational multivariate analysis of variance. *Austral Ecology* 1–24 (2005). doi:10.1139/cjfas-58-3-626

Author contributions

ADR, DB & TVL designed the study, ADR & NW performed the research, ADR wrote the first draft of the manuscript and analyzed the data, and all authors contributed substantially to revisions.

The authors declare no competing financial interests.

Figure legends

Figure 1: Visualization of the life history data. A: nonmetric multidimensional scaling of the metapopulations showing dissimilarities between metapopulations based on 'Euclidean distance', B: Hierarchical clustering of the transcriptomic profiles of the three metapopulation types and the ancestral mite population living in cold conditions (17°C), relative to a reference strain (London).

Figure 2: Effects of variation in metapopulation structure on life history parameters (mean values \pm SE) of mites. A: longevity, B: total fecundity, C: sex ratio (males/total clutch size), D: developmental time; E: Daily fecundity. Dotted lines represent parameter values before 30 generations of selection. Equal notations indicate non-significant contrast for the respective measurements. Error bars represent standard errors.

Figure 3: Effects of variation in metapopulation structure on glucose level (nmol) per 50 mites (mean values \pm SE). Equal notations indicate non-significant contrast for the respective measurements. Error bars represent standard errors.

Figure 4: Scatterplot showing the \log_2 -converted FC of the differentially expressed genes in SPA and TEM, using HOM as reference. The inset represents a Venn-diagram depicting the number of differentially expressed genes in the TEM and SPA lines, relative to HOM.

Figure 5: Gene set analysis of biological processes for differentially expressed genes in spider mites after adaptation to spatial and spatiotemporal variability. Nodes and edges represent gene sets and overlap of members between interconnected sets, respectively. Using PAGE, red, blue and grey indicate whether a gene set was significantly up-regulated, down-regulated or not differentially expressed, respectively (Varemo et al., 2013). Gene sets are labelled with the GO-ID (corresponding GO-labels are listed in Table S1). Green, orange and purple halos surrounding nodes show which gene sets code for genes involved in methionine biosynthesis, gluconeogenesis and interconnected pathways, and genes coding for glycoside hydrolases, respectively.

Figure 6: Effects of long-term evolution in the different metapopulation contexts on population growth on a novel host (mean values \pm SE). A: number of eggs after one week, B: number of female offspring reaching adulthood after 21 days. Equal notations indicate non-significant contrast for the respective measurements. Error bars represent standard errors.

Tables

Table 1: Results for fixed effects from mixed linear models with fecundity, developmental time, sex-ratio, longevity and juvenile survival as response variable.

Factor	Num df	Den df	<i>F</i>	<i>p</i>
<i>Daily fecundity</i>				
Treatment	2	8.732	9.34	0.0068
Day	1	1891	693.77	<.0001
Day*Treatment	2	1891	2.99	0.0507
<i>Total fecundity</i>				
Treatment	2	106.2	6.79	0.0017
Sex-Ratio				
Treatment	2	189.8	3.55	0.0308
<i>Developmental time</i>				
Treatment	2	2228	4.09	0.0168
Sex	1	228	10.78	0.0010
Treatment*Sex	2	2228	0.25	0.7782
<i>Longevity</i>				
Treatment	2	158	5.43	0.0053
Juvenile survival				
Treatment	2	7.201	0.25	0.7882

Figures

Figure 1

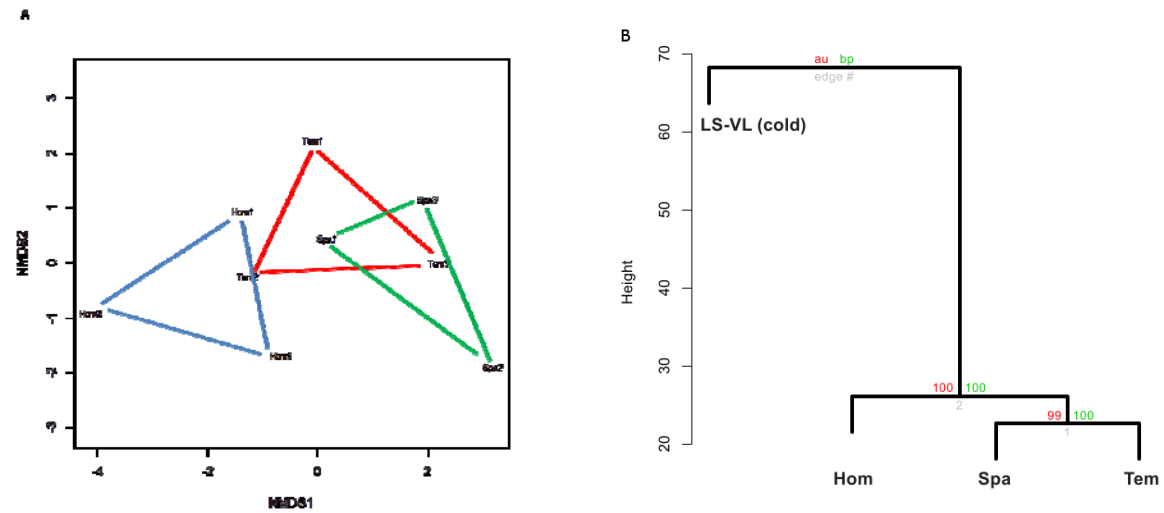


Figure 2

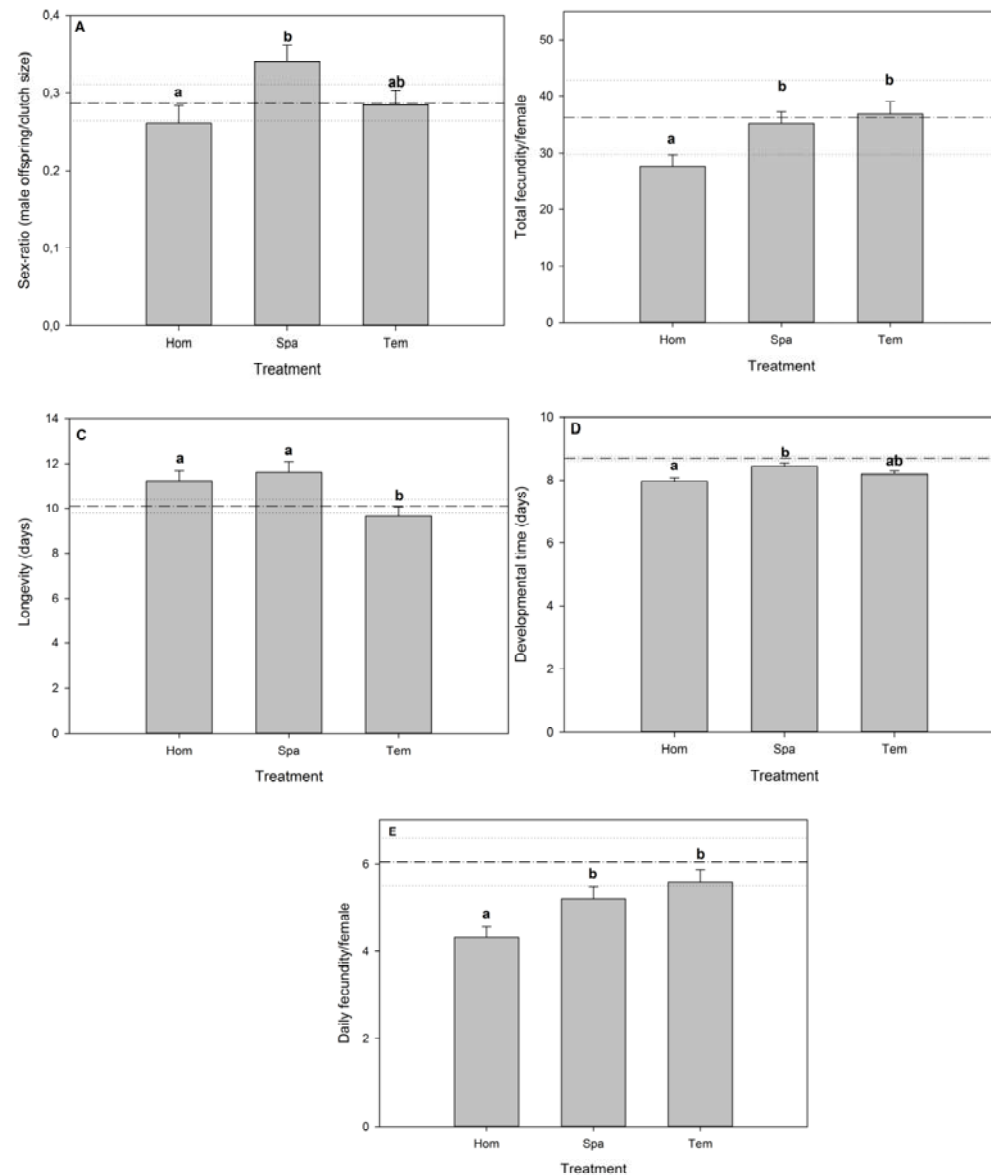


Figure 3

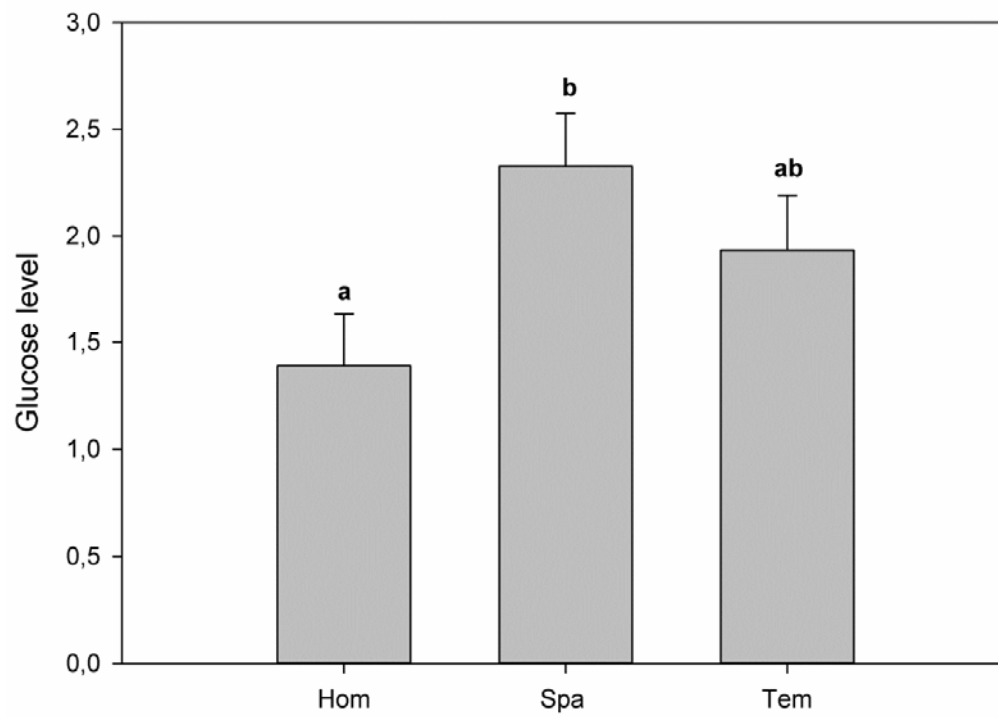


Figure 4

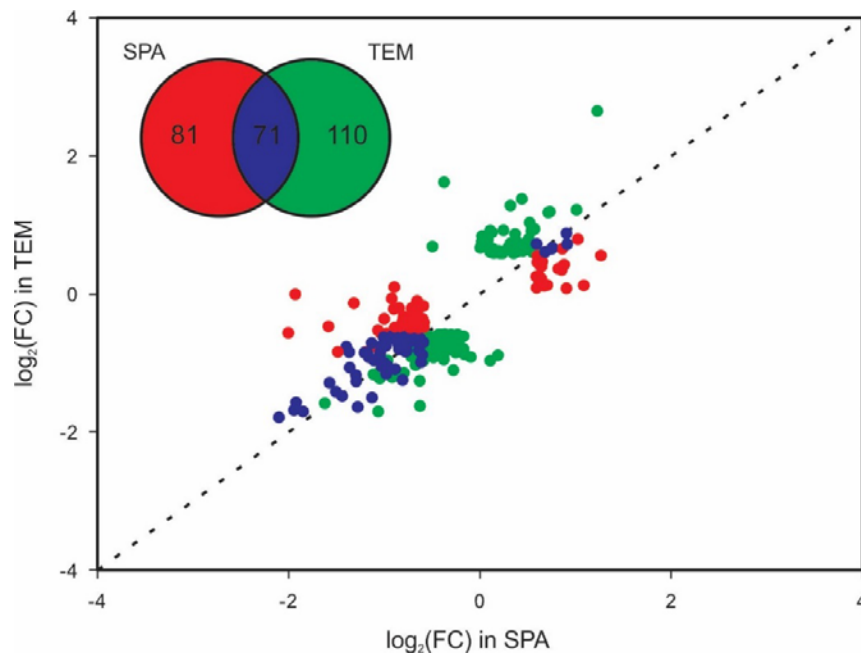


Figure 5

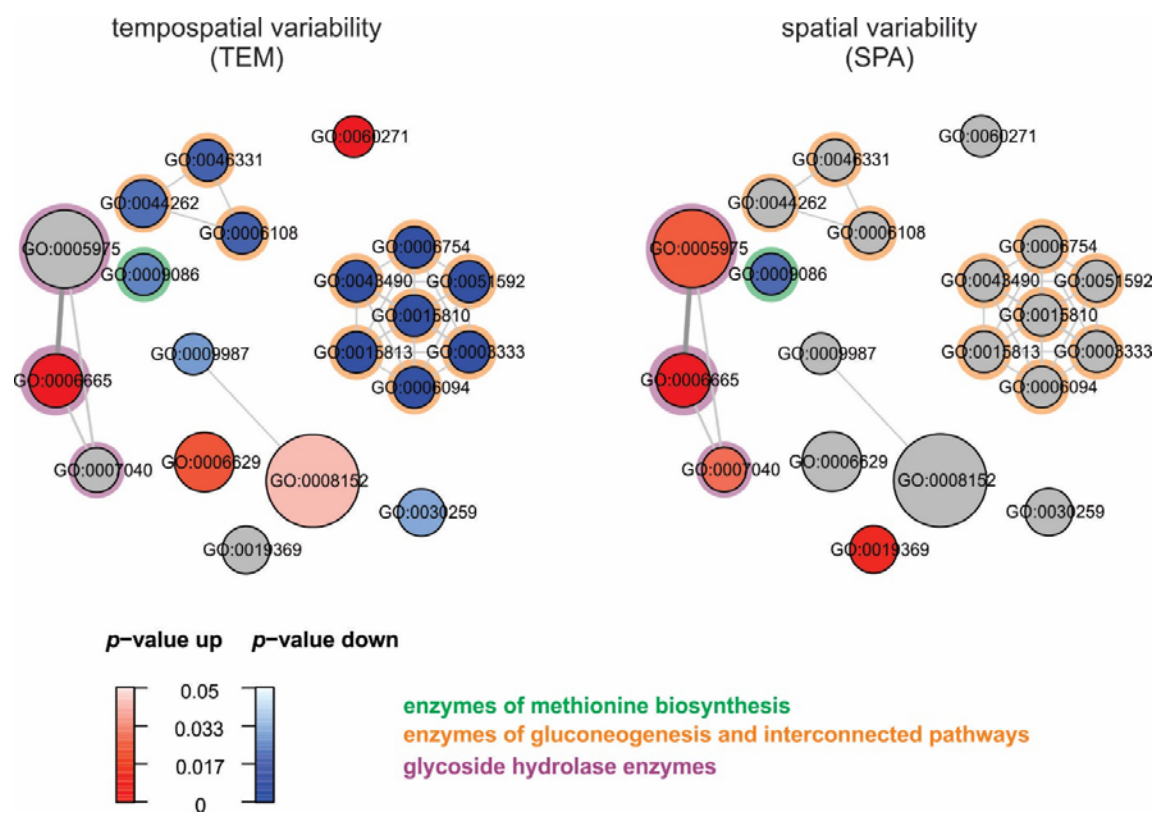


Figure 6

