

Filament formation by metabolic enzymes is a specific adaptation to an advanced state of cellular starvation

Ivana Petrovska^{1,3}, Elisabeth Nüske^{1,3}, Matthias C. Munder¹, Gayathrie Kulasegaran¹, Kimberley Gibson¹, Liliana Malinovska¹, Doris Richter¹, Jean-Marc Verbavatz¹, Simon Alberti^{1,2}

1. Max Planck Institute of Molecular Cell Biology and Genetics, 01307 Dresden, Germany
2. Correspondence should be addressed to S.A.: alberti@mpi-cbg.de
3. These authors contributed equally to this work

SUMMARY

One of the key questions in biology is how the metabolism of a cell responds to changes in the environment. In budding yeast, starvation causes a drop in intracellular pH, but the functional role of this pH change is not well understood. Here, we show that the enzyme glutamine synthetase (Gln1) forms filaments at low pH and that filament formation leads to enzymatic silencing. Filament formation by Gln1 is a highly cooperative process, strongly dependent on macromolecular crowding, and involves back-to-back stacking of cylindrical homo-decamers into filaments that associate laterally to form higher order fibrils. Other metabolic enzymes also assemble into filaments at low pH. Hence, we propose that filament formation is a general mechanism to inactivate and store key metabolic enzymes during a state of advanced cellular starvation. These findings have broad implications for understanding the interplay between nutritional stress, the metabolism and the physical organization of a cell.

INTRODUCTION

The organization of cytoplasm into functionally distinct compartments is fundamental to life. Eukaryotes in particular have achieved a high level of organizational complexity by restricting specific biochemical reactions to membrane-bound organelles in the cytoplasm. A different but equally effective strategy for localized biochemistry involves the formation of phase-separated macromolecular assemblies, which are built *de novo* from proteins and RNAs (Brangwynne, 2011; Hyman and Simons, 2012; O'Connell et al., 2012; Wilson and Gitai, 2013). These non membrane-bound assemblies are often large, occupying an intermediate length scale situated between the nanoscale of individual macromolecules and the microscale of cells. Such intermediate-sized (or mesoscale) assemblies often have specific functions that are intricately linked to their higher order complexity.

Mesoscale assemblies are structurally and functionally diverse, ranging from dynamic RNA granules, such as P bodies and stress granules, to highly ordered microcompartments, such as bacterial carboxysomes. Based on their physicochemical properties they can be categorized into two distinct groups: liquid-like and crystalline. Liquid-like assemblies are disordered and very dynamic (the components turn over on the order of seconds to minutes) (Brangwynne et al., 2009; Brangwynne et al., 2011; Li et al., 2012), whereas crystalline assemblies are more ordered and static (Wilson and Gitai, 2013; Yeates et al., 2010). The distinctive properties of these assemblies also entail different geometries: liquid-like assemblies are usually spherical, whereas crystalline assemblies adopt a broader variety of shapes, ranging from linear polymers and two-dimensional polymer sheets to extensively cross-linked

three-dimensional crystals. Modern imaging techniques are now enabling us to unravel the various ways in which nature uses such organizational principles to functionally diversify the subcellular landscape.

The number of identified mesoscale assemblies in prokaryotic and eukaryotic cells is increasing rapidly (Hyman and Simons, 2012; Wilson and Gitai, 2013; Yeates et al., 2010). Metabolic enzymes in particular are able to self-assemble into higher order structures (O'Connell et al., 2012), suggesting an important role in regulating the metabolism of cells. These findings establish a link to earlier work from Paul Srere and colleagues, who proposed that metabolic enzymes undergo static and dynamic interactions to spatiotemporally organize and regulate metabolic pathways (Srere, 1987). Such organizational specificity was believed to be necessary to ensure metabolic efficiency. Additional studies suggest that self-assembling metabolic enzymes can be co-opted for other functional roles. A particularly striking example is that of cytidine triphosphate synthase, a bacterial enzyme that forms cytoskeletal filaments with cell morphological functions (Barry and Gitai, 2011; Ingerson-Mahar et al., 2010).

Recent large-scale studies in budding yeast identified several metabolic enzymes that form punctate or filamentous structures in the cytoplasm. Examples include cytidine triphosphate synthase (Noree et al., 2010), an enzyme involved in the synthesis of cytosine nucleotides, and glutamine synthetase (Narayanaswamy et al., 2009), an enzyme that promotes the conversion of glutamate into glutamine. The metabolic reactions catalyzed by these newly identified enzymes were diverse, but the conditions under which they assembled appeared to be similar: filament formation was

most frequently observed when cells entered stationary phase or were depleted of their primary energy source: glucose. This suggests a functional association with the energy-depleted cellular state, an assumption that has so far remained untested. Moreover, it is not yet clear whether these assemblies are catalytically active, serve as enzyme storage compartments, or are protein aggregates.

We conducted a comprehensive analysis of the molecular underpinnings and functions of filaments formed by metabolic enzymes during advanced conditions of starvation. Using yeast glutamine synthetase (Gln1) as a model enzyme, we show that filament formation involves the repeated stacking of homo-decameric enzyme complexes by a back-to-back mechanism. We further demonstrate that filament assembly is triggered by a starvation-induced drop in the intracellular pH and results in enzymatic inactivation and the formation of enzyme storage depots. Importantly, these findings also extend to other filament-forming proteins, arguing that filament formation by metabolic enzymes is a specific adaptation that allows yeast to endure and recover from severe starvation conditions.

RESULTS

Gln1 assembles into filaments in starved yeast cells

Gln1 is an essential metabolic enzyme that catalyzes the ATP-dependent synthesis of glutamine from glutamate and ammonium. In agreement with previous studies (Narayanaswamy et al., 2009), we found that GFP-tagged Gln1 was evenly distributed in dividing cells but coalesced into fluorescent foci in cells that were maintained in a phosphate buffer (Figure 1 – figure

supplement 1). While most of these foci had a punctate appearance, we noticed a few that displayed a rod-like shape. This suggested that Gln1 might be able to assemble into filamentous structures, but at the same time it implied that the efficiency of filament formation was very low.

To exclude a potential interference from the GFP tag, we made use of the fact that the homo-oligomeric structure of Gln1 allows mixed oligomers composed of tagged and untagged monomers. Indeed, when we co-expressed untagged and GFP-tagged Gln1 in yeast, the punctate localization pattern disappeared, and Gln1-GFP assembled into a few filaments per cell (Figure 1 – figure supplement 2). To verify this finding, we replaced endogenous Gln1 with a version containing a C terminal tetracystein tag. This stretch of six amino acids can be labeled with small dyes such as FIAsH. Indeed, FIAsH-labeled Gln1 assembled into filaments in cells that were transferred from media to buffer (Figure 1 – figure supplement 3). In a search for a protein-encoded fluorescent tag that is compatible with the filamentous state, we replaced the GFP tag in the endogenous *GLN1* locus with mCherry. Indeed, unlike GFP-tagged Gln1, mCherry-tagged Gln1 assembled into filaments (Figure 1A). The number of filaments per cell as well as the kinetics of filament formation was comparable to our previous experiment with predominantly untagged Gln1 (Figure 1 – figure supplement 2). These data indicate that mCherry is compatible with the filamentous state and therefore a suitable fluorophore to study the localization of Gln1 in living cells.

Using live cell microscopy, we found that mCherry-tagged Gln1 was diffusely localized in dividing cells but formed filaments when the growth medium lacked a carbon source (33 % of the cells had filaments after 4 hours

of glucose starvation) (Figure 1B). Importantly, when we transferred the cells into a phosphate buffer that contained no metabolizable nutrients, filaments were detectable in all cells (Figure 1C). Thus, under conditions of severe starvation, the filament formation phenotype becomes fully penetrant. This suggests that filament formation by metabolic enzymes is a starvation-induced cellular adaptation. Here, we refer to this specific cellular state as the state of advanced starvation.

On average, filament assembly started 50 minutes ($n = 179$) after onset of advanced starvation conditions (Figure 1D and Video 1). However, we observed extensive variation from cell to cell, suggesting that yeast vary in their ability to deal with sudden energy depletion (Video 2). Importantly, addition of glucose to buffer was sufficient to prevent filament formation (Figure 1C). We also found that cells can fully recover from the state of advanced starvation. Upon resupply of nutrients, filament dissolved very rapidly, and shortly after filament dissolution cells re-entered into the cell cycle (Figure 1E, Video 3 and 4). On average, filament dissolution was completed 18 minutes after nutrient addition ($n = 65$). We conclude that Gln1 dynamically and reversibly assembles into filaments when yeast cells are exposed to conditions of advanced starvation.

Specific point mutations in Gln1 inhibit or promote filament formation

A recent study reported a high-resolution crystal structure for yeast Gln1 (He et al., 2009). The enzyme is composed of two pentameric rings that interact to form a face-to-face homo-decamer. This structural arrangement is identical to those of mammalian and plant glutamine synthetases. Curiously, however,

the crystal structure of yeast Gln1 also revealed a new back-to-back association between two decamers (Figure 2A). The biological significance of this novel interface, however, remained undetermined.

The presence of the decamer-decimer interface led us to hypothesize a simple mechanism for filament formation: assembly by repeated back-to-back stacking of decamers. To test this assumption, we mutated specific residues in the interface (Figure 2A and Figure 2 – figure supplement 1, 2 and 3). The resulting Gln1 variants were fused to mCherry and tested in yeast for their ability to assemble into filaments. We found three mutations (E186K, P83R, T49E) that abrogated the ability of Gln1 to form filaments in starved cells (Figure 2B). Intriguingly, we also identified two mutants that formed filaments in growing cells. The Y81A mutant had a slightly increased propensity to form filaments, whereas the R23E mutant formed filaments constitutively, regardless of the growth conditions. To test whether the R23E mutant effect could be neutralized by a second mutation, we introduced the inhibitory T49E mutation into the R23E variant. Indeed, the double mutant (R23E, T49E) was no longer able to form filaments (Figure 2B), indicating that the increased propensity to form filaments can be overcome by an inhibitory second site mutation. These findings indicate that the propensity to form filaments can be modulated by specific mutations in Gln1. They also suggest that the decamer-decimer interface is biologically important.

Gln1 assembles by a back-to-back stacking mechanism

To provide further evidence for the proposed mechanism of assembly, we purified wildtype and mutant Gln1 from yeast cells. From this point on we will

use a color code to facilitate discrimination between the different mutant forms of Gln1. Mutants with inhibitory effects on filament formation will be highlighted in red, whereas constitutively filament-forming mutants will be highlighted in green. First, we investigated the oligomeric state of wildtype and variant Gln1 by blue native PAGE and immunoblotting. As can be seen in Figure 2C, the predominant form of Gln1 was a decamer. Importantly, however, we also identified distinct bands that corresponded to higher molecular weight forms of the enzyme. These assemblies were predominantly detectable for the wildtype and the R23E variant. Moreover, when compared to wildtype Gln1, the constitutively filament-forming R23E variant showed an increased number of these higher order assemblies.

As a next step, we performed correlative light and electron microscopy (CLEM) experiments on cells overexpressing the R23E variant as mCherry fusion. The ultrastructural features of the mCherry-positive structures are shown in Figure 2D. The electron micrographs show a large number of filaments, which are laterally aligned into higher order bundles. This side-by-side bundling is consistent with the growth pattern of the filaments, which was predominately in the longitudinal direction but also included some increase in circumference over time (see Video 1). To exclude that the bundling was caused by the mCherry tag, we performed a careful ultrastructural analysis of yeast cells that expressed untagged R23E. Indeed, we could also identify fibrillar structures in the cytoplasm of R23E-expressing cells but not in control cells (Figure 2 – figure supplement 4). However, we noticed that the filaments were in closer contact, suggesting that the mCherry tag has some influence on the packing density. Together, these findings indicate that Gln1 assembles

into filaments by a back-to-back stacking mechanism. Once formed, these filaments can organize into higher order fibrils.

Self-assembly into filaments is driven by macromolecular crowding

Is Gln1 able to self-assemble or does it need additional factors? To investigate this question, we purified wildtype and variant Gln1 from bacteria. The purified proteins were investigated by dynamic light scattering and gel exclusion chromatography for their ability to assemble into high molecular weight forms. As can be seen in Figure 3A and Figure 3 – figure supplement 1, R23E Gln1 had a strongly increased propensity to assemble into higher order forms. This propensity was reduced in wildtype Gln1 and absent from a variant that had lost the ability to assemble into filaments in yeast cells (E186K). We next analyzed purified R23E Gln1 by electron microscopy (Figure 3 – figure supplement 2). Our analysis revealed abundant cylindrical particles, consistent with the reported structure of Gln1 (He et al., 2009). Interestingly, these particles were organized into chains, providing further support for the proposed back-to-back assembly mechanism. However, we were unable to identify higher order structures that resembled previously observed fibrillar structures in yeast, suggesting that an important factor was missing.

What could be the missing factor? A first hint came from our attempts to purify filaments from yeast cells. When we lysed filament-containing yeast, the filaments were unstable (Figure 3B). To identify components that are necessary for filament integrity, we performed experiments with modified lysis buffers. One obvious difference to yeast cytoplasm was that the lysis buffer

lacked a high background concentration of macromolecules. We therefore tested the influence of macromolecular crowders on filament stability. Strikingly, when we added the crowding agent Ficoll 70 at a concentration close to the physiological concentration of macromolecules (200 mg/ml), the filaments remained intact (Figure 3C).

To further investigate the role of macromolecular crowding, we purified mCherry-tagged R23E from yeast cells and incubated it for one hour in the presence or absence of a crowder. The samples were subsequently analyzed by fluorescence microscopy for the formation of higher order structures. Intriguingly, we found that R23E Gln1 formed filamentous structures in the presence of a crowder but not in its absence (Figure 3D). Importantly, similar structures could not be detected when we replaced R23E with the assembly-incompetent variant P83R. Further inspection of *in vitro* formed Gln1 filaments revealed structures of varying thickness (Figure 3 – figure supplement 3). This suggests that *in vitro* reconstituted filaments are able to assemble into higher order bundles, as in yeast cells. Thus, we conclude that the assembly of Gln1 is strongly dependent on macromolecular crowding but independent of other cellular components.

A drop in intracellular pH triggers filament formation

Wildtype Gln1 only formed filaments in energy-depleted cells, in contrast to the R23E variant, which assembled also in dividing cells. This raised questions about the trigger for assembly in starved yeast. Again experiments with lysates of R23E-expressing cells were revealing. These experiments showed that the stability of R23E filaments could not only be increased by

crowders but also by acidifying the lysis buffer. A cell lysate prepared with a lysis buffer of pH 5 contained abundant filaments, while the filaments began to fall apart when the lysis buffer was adjusted to pH 6, and they were absent from lysates adjusted to pH 7 or 8 (Figure 4A). This raised the possibility that intracellular pH changes are the trigger for filament formation.

The intracellular pH of yeast cells drops significantly when yeast are depleted of their primary energy source glucose (Dechant et al., 2010; Orij et al., 2011; Orij et al., 2009). This is because yeast cells have to continuously expend energy to maintain the proton gradient across the plasma membrane (usually yeast media are acidic). To test whether pH changes are sufficient to trigger the assembly of Gln1, we artificially acidified the cytoplasm by adding the protonophore 2,4-dinitrophenol (DNP) to dividing yeast. Strikingly, acidified yeast abundantly formed filamentous structures, despite the presence of glucose (Figure 4B). Next, we tested whether a neutral or basic outside pH could prevent the formation of filaments in energy-depleted yeast. Indeed, starved yeast maintained in a buffer of pH 7 contained shorter and smaller filaments than yeast in a buffer of pH 5 (Figure 4C). Moreover, filaments were largely absent when the buffer was adjusted to pH 8.

Intracellular pH changes could directly or indirectly affect the assembly of Gln1. To differentiate between these two possibilities, we purified mCherry-tagged Gln1 from yeast and incubated it for one hour in a buffer of pH 5 or 8. Afterwards, the samples were examined by fluorescence microscopy for the formation of higher order structures. Indeed, Gln1 formed filamentous structures in the acidic buffer but not in the control buffer with a basic pH (Figure 4D). Importantly, this effect was specific, because the assembly-

deficient variant P83R did not assemble into higher order structures in a buffer of pH 5. Thus, we conclude that Gln1 assembly is directly regulated by protons and that the trigger for filament formation in yeast cells is a starvation-induced drop in the intracellular pH.

Acidification of the cytosol is a general trigger for filament formation

A recent study reported that several protein complexes assemble into filaments as yeast cells approach stationary phase (Noree et al., 2010). One of these filaments consisted of only one protein (Glt1), while the others were composed of multiple proteins with two (Ura7/Ura8) or more (Gcd2, Gcd6, Gcd7, Gcn3, Sui2) distinct subunits. To study whether cytosolic acidification is also required for formation of these assemblies, we tagged one protein in each filament with GFP. We then determined the frequency of filaments in yeast cells that were resuspended in different pH-adjusted buffers. Because these buffers lacked an energy source, the starved cells rapidly adopted the outside pH. Intriguingly, we found that all three proteins formed filaments in a strongly pH-dependent manner (Figure 5A). Moreover, filament formation was almost completely abrogated at a neutral or basic pH. We then tested if we could induce filament formation in growing cells by adding the protonophore DNP. Indeed, cells suspended in a DNP-containing buffer of pH 5 or pH 6 showed widespread filament formation, despite the presence of glucose (Figure 5B). However, filaments were absent from cells maintained in a DNP-containing buffer of pH 7. This indicates that pH changes are a general trigger for the formation of filaments by metabolic enzymes.

Assembled Gln1 is inactive but becomes active again after disassembly

To investigate the functional implications of filament formation, we first tested whether filament formation modulates the activity of Gln1. Indeed, Gln1 was progressively inactivated under conditions of advanced starvation (Figure 6A), and the extent of inactivation correlated with the amount of filament formation (Figure 6 – figure supplement 1). Next, we compared the enzymatic activities of wildtype and mutant Gln1. As can be seen in Figure 6B, the R23E variant displayed a strongly reduced synthetase activity. Because these activity measurements were performed with cell lysates, we hypothesized that the actual enzymatic inactivation is much stronger in intact cells. To investigate this possibility, we inspected wildtype and variant Gln1 variants for growth phenotypes. Consistent with the essential function of Gln1, the constitutively assembling R23E variant had a strongly diminished ability to grow (Figure 6C). Importantly, this growth deficiency was abrogated by a second site mutation that prevents filament formation (T49E), indicating that filament formation is the cause of the reduced growth rate. Moreover, cells growing on glutamine as the sole nitrogen source (Figure 6 – figure supplement 2) showed no growth defect, suggesting that this deficiency was due to the inability of the cells to produce sufficient amounts of the growth-promoting amino acid glutamine. Based on these findings, we conclude that filament formation during advanced starvation conditions silences the enzymatic activity of Gln1.

Do these inactive filaments serve as storage depots for Gln1? To address this question, we generated a yeast strain that expressed mCherry-tagged Gln1 from the inducible *GAL* promoter. Because of the essential

nature of Gln1, this strain had to be maintained in the presence of galactose. To test whether assembled Gln1 can become enzymatically active again, we grew the strain in the presence of galactose and then induced starvation by transferring it into a phosphate buffer. After four hours of starvation the great majority of the cells had formed filaments. We then added glucose-containing growth medium to induce reentry into the cell cycle. Importantly, under these conditions, the *GAL* promoter is switched off, and Gln1 is no longer synthesized *de novo*. Therefore, the cells can only enter the cell cycle when they manage to reactivate enzyme complexes that were previously stored in filaments. Indeed, after the filaments had dissolved, the cells started to divide again (Figure 6D and Video 5). Growth only stopped after several rounds of cell division, presumably because the amount of Gln1 was diluted below a critical concentration. Thus, we conclude that starvation-induced filaments can serve as storage depots for Gln1.

What is the physiological function of filament formation? To investigate this question, we monitored the re-growth of yeast after a short episode of starvation. We hypothesized that the ratio of assembled to unassembled Gln1 should specifically affect the initial growth phase of recovering yeast. To investigate this possibility, we observed the growth of Y81A mutants immediately after nutrient re-supply (the Y81A mutant displayed slower filament dissolution kinetics, but no growth defect in plating assays, see Figure 6 – figure supplement 3 and 4). As can be seen in Figure 6E, the Y81A strain showed significantly slower growth after exit from starvation than wildtype cells. Thus, we conclude that exit from starvation is dependent on

stored enzymes and that the rate of filament dissolution determines the timing of re-growth.

Our findings so far suggest that filament formation may regulate the ability of yeast cells to resume growth after advanced starvation conditions. But does filament formation also promote the survival of and the recovery from starvation? To investigate this possibility, we interfered with the ability of yeast to form filaments by starving them in buffers of neutral or basic pH for extended times. As can be seen in Figure 7A, the re-growth of yeast was severely impaired in filamentation-inhibiting buffer (pH 7 or 8), whereas cells maintained in filamentation-promoting buffer (pH 6) showed fast recovery. This suggests that filament formation by metabolic enzymes is required for recovery from severe starvation. Thus, we conclude that filament formation is a specific adaptation that enables yeast to endure severe energy depletion stress.

DISCUSSION

How cells survive and recover from severe starvation is a largely unresolved question in biology. Our findings suggest that this may involve extensive changes in the organization of the cytoplasm. We demonstrate that starvation induces the self-assembly of yeast glutamine synthetase into filaments by a simple back-to-back stacking mechanism (see Figure 7B for a model of assembly). We further show that filament formation is triggered by starvation-induced acidification of the cytosol and results in enzyme silencing. This catalytic inactivation is reversible, arguing that filaments are temporary storage depots for Gln1. Other filament-forming enzymes show a strikingly

similar sensitivity to pH, and their growth-associated functions are probably not needed during advanced starvation. This suggests that the formation of inactive enzyme assemblies may be a general principle, which allows cells to adapt to low energy levels. Consistent with this, we found that filament formation regulates the re-growth of yeast after severe starvation. Recent findings indicate that quiescence-associated subcellular structures, such as proteasome storage granules and actin bodies, also form in a pH-dependent manner (Peters et al., 2013). This strongly reinforces the notion that intracellular pH changes serve as a global messenger to signal the depletion of energy during starvation and cellular quiescence (Dechant et al., 2010; Orii et al., 2012).

How does the pH regulate the formation of Gln1 filaments? Protons may act as allosteric effectors that induce structural changes at the decamer-decamer interface. Accordingly, the behavior of the Gln1 mutants could be explained by an increased or decreased propensity to undergo these structural changes. However, alternative scenarios can be envisioned in which protons act in non-allosteric ways. We noticed that Gln1 has a theoretical isoelectric point around 6. Starvation-induced changes in the cytosolic pH will therefore strongly reduce its net charge. Thus, an overall reduction of repulsive interactions or altered charge distributions at the interface – which the mutations introduced in this study may modulate – could equally well be a driving force for assembly. Regardless of the specific mechanism, what is evident is that a drop in intracellular pH induces the formation of an attractive interface at the two ends of a decameric Gln1 particle. The steric self-compatibility of this interface and the highly symmetric

cylindrical structure of Gln1 then promote the assembly of Gln1 into extended filaments. Once formed, these filaments are able to associate side by side to form higher order bundles (Figure 7B).

Where does the energy for assembly come from? We found that Gln1 filaments are rather unstable, suggesting that each stacking reaction is only mildly favorable. As a consequence, the mechanism of filament formation has to be highly cooperative. In agreement with this, we found that the formation of filaments and fibrils was strongly dependent on a macromolecular crowding agent. This indicates that the assembly reaction is not only driven enthalpically by chemical interface-interface interactions but also entropically by excluded volume effects (Figure 7B). Consistent with this, protein associations are often enhanced by macromolecular crowding (Minton, 2001), and crowding effects become particularly relevant in a self-assembling structure with multiple units. Accordingly, a recent theoretical study proposed an important role for crowding in the formation of mesoscale assemblies (Marenduzzo et al., 2006). This suggests that macromolecular crowding may have a key role in reorganizing the cytoplasm during advanced starvation.

Gln1 filaments dissolve rapidly when yeast cells re-enter the cell cycle, and the disassembled enzyme complexes are fully functional. This finding and the highly ordered structural arrangement of Gln1 into fibrils argues against the possibility that these filaments are protein aggregates consisting of misfolded proteins. Thus, we conclude that starvation-induced filament formation is not a chaotic protein aggregation event but a desired outcome of a protective cellular program. During its lifetime, a given yeast cell repeatedly transitions into and out of starvation, suggesting that on evolutionary time

scales the yeast cytoplasm must have undergone numerous pH fluctuations. This makes it very likely that specific adjustments have been made to optimize the behavior of protein complexes in an energy-depleted and acidified cytoplasm. This consideration is also supported by the fact that other protein complexes assemble into distinct, starvation-induced structures that do not intermix (Laporte et al., 2013; Laporte et al., 2011; Laporte et al., 2008; Liu et al., 2012; Sagot et al., 2006). How this remarkable specificity of assembly is achieved in the crowded environment of quiescent cells remains to be determined, but some of the principles presented here may apply more generally.

Filament formation inactivates the enzymatic activity and results in the formation of storage depots for Gln1. How filament formation induces enzymatic silencing is unclear, but we suspect that assembled Gln1 can no longer undergo the conformational changes that are required for enzymatic activity. It is also conceivable that the substrate cannot gain access to the catalytic site. However, when starved yeast cells are re-exposed to nutrients, intracellular pH levels rise and Gln1 filaments disassemble, thus shifting the enzyme back into its active form. In agreement with this, we found that the ability to dissolve filaments specifically affects the ability of yeast to re-grow after starvation (Figure 6E). Moreover, preventing the starvation-induced decline in intracellular pH severely impaired the ability of yeast to recover from prolonged starvation (Figure 7A), suggesting that filament formation by metabolic enzymes is required for survival of extensive energy depletion stress.

What could be the advantage of forming filaments during severe starvation? We consider four possible scenarios as likely. First, filaments may be resistant to bulk autophagy, allowing yeast cells to spare vital enzymes from degradation during prolonged starvation. Second, filament formation may promote the transition into or recovery from a more solid and glass-like material state of the cytoplasm, as has been proposed for bacteria (Parry et al., 2014). Third, filament-forming cells may be healthier because of a greater resistance to metabolic fluctuations during starvation (enzyme inactivation may provide a buffer against metabolic noise, which could trigger accidental re-entry into the cell cycle). Fourth, enzyme inactivation may help conserve energy as part of a cell-wide energy conservation program, as has been proposed for mammalian cells containing ADF/cofilin filaments (Bernstein and Bamburg, 2010; Bernstein et al., 2006). Discrimination between these possibilities has to await the results from further experimental studies.

Our findings suggest that yeast cells can extensively rearrange the cytoplasm to adjust their metabolism in response to environmental changes. We reveal the cytosolic pH as a key regulator of this process and show that assembly into higher order structures can modulate the activity of proteins. Several earlier studies reported changes in the intracellular pH in response to environmental perturbations. The slime mold *Dictyostelium* for example experiences a drop in intracellular pH during starvation (Gross et al., 1983) and in response to stress (Pintsch et al., 2001). Studies with mammalian cells showed that the intracellular pH regulates metabolism (Busa and Nuccitelli, 1984; Moolenaar, 1986), promotes tumorigenesis (Webb et al., 2011) and the

exit from quiescence (Zetterberg and Engstrom, 1981). It will be interesting to revisit these and other cases in the light of our findings.

MATERIALS AND METHODS

Cloning procedures

Cloning procedures were performed as described previously using the Gateway system (Alberti et al., 2007; Alberti et al., 2009). For a list of plasmids used in this study please see supplemental file 1.

Yeast genetic techniques, strains, and media

The media used were standard synthetic media or rich media containing 2% D-glucose or 2% D-galactose. The yeast strain backgrounds were W303 *ADE+* (*leu2-3,112*; *his3-11,-15*; *trp1-1*; *ura3-1*; *can1-100*; [*psi-*]; [*PIN+*]), BY4741 (*his3 Δ 1*; *leu2 Δ 0*; *met15 Δ 0*; *ura3 Δ 0*; [*psi-*]; [*PIN+*]) or a prototrophic W303 (Klosinska et al., 2011). The strain used in Figure 1 – figure supplement 1 and 2 is the same as used in a previous publication (Narayanaswamy et al., 2009). Yeast gene deletions were performed using a PCR-based approach (Gueldener et al., 2002). C terminal tagging of yeast genes was performed as described previously (Sheff and Thorn, 2004). For a list of used strains please see the supplemental file 1.

Treatment of yeast cells

To induce filaments, yeast strains were grown in YPD until early to mid log phase. The cells were then washed once or twice with water and

resuspended in a 0.1 M phosphate citrate buffer (pH 5, 6 or 7) or a 0.1 M phosphate buffer (pH 8). To ensure rapid equilibration of the intracellular and extracellular pH, some buffers contained proton carriers (75 μ M monensin, 10 μ M nigericin) and inhibitors to rapidly deplete cells of energy (10 mM NaN_3 , 10 mM 2-deoxyglucose), according to what was described in a previous study (Brett et al., 2005). To acidify yeast cells in the presence of glucose, 2 mM 2,4-dinitrophenol was added to pH-adjusted phosphate buffers containing 2 % glucose in agreement with a previously published procedure (Dechant et al., 2010).

Fluorescence microscopy

General fluorescence microscopy and time-lapse movies were acquired using a Deltavision microscope system with softWoRx 4.1.2 software (Applied Precision). The system was based on an Olympus IX71 microscope, which was used with a 100x 1.4 NA (or 150x 1.45 NA) objective. The images were collected with a Cool SnapHQ camera (Photometrics) as 352x352 (or 384x384) pixel files using 1x1 (or 2x2) binning. Images were deconvolved using standard softWoRx deconvolution algorithms (enhanced ratio, high to medium noise filtering). Images were maximum intensity projections of at least 20 individual images. Representative cells are shown and each experiment was performed independently three times. Cell boundaries were introduced by changing the contrast of the DIC image and overlaying it with the fluorescent image. Fluorophores used were mCherry or superfolder GFP with a mutation to prevent self-association (V206R).

Treatment of yeast cells for fluorescence microscopy with FIAsH

FIAsH-labeling of tetracycline-tagged Gln1 was essentially performed as described previously (Andresen et al., 2004). More specifically, 200 μ l of SD containing 1 μ l of a 1,2-ethanediol stock (5 μ M in HEPES, pH 7.5) and 4 μ l of a FIAsH-EDT₂ stock (4 μ M in 1 M Tris-HCl, pH 7.5) were inoculated with 10 μ l of mid log phase yeast cells. The cells were grown overnight at 25°C. The culture was harvested by centrifugation and excess dye was washed away with PBS. The cells were incubated in PBS on a rotating wheel for 30 minutes and destained in ethanediol-containing PBS. Subsequently the cells were analyzed by fluorescence microscopy.

Transmission electron microscopy (TEM) of yeast cells

Yeast cells were grown to log phase, vacuum filtered, mixed with 20 % BSA, high pressure frozen (EMPACT2, Leica Microsystems, Wetzlar, Germany) and freeze-substituted with 0.1 % uranyl acetate and 4 % water in acetone at -90°C. Samples were transitioned into ethanol at -45°C, before infiltration into a Lowicryl HM-20 resin (Polysciences, Inc., Eppelheim, Germany), followed by UV polymerization at -25°C. Semi-thin (150 nm thick) sections were mounted on formvar-coated mesh EM grids and stained for 3 minutes with lead citrate. Imaging was done in a Tecnai-12 biotwin TEM (FEI Company, Eindhoven, The Netherlands) at 100 kV with a TVIPS 2k CCD camera (TVIPS GmbH, Gauting, Germany).

Correlative light/electron microscopy (CLEM)

For CLEM, yeast cells expressing wildtype or R23E Gln1-mCherry were processed for TEM. To allow alignment of EM and light microscopy (LM) images, unstained sections on EM grids were incubated with quenched 200 nm Blue (365/415) FluoSpheres as fiducials. Grids were mounted on a glass slide with VectaShield (Vector Laboratories, Inc., Burlingame, USA) and viewed in both red (for mCherry) and UV (for the fiducials) channels. After staining for TEM, regions of interest in LM were relocated in TEM. Montaged images were acquired at multiple magnifications to facilitate the correlation. LM and TEM images were overlaid in ZIBAmira (Zuse-Institut, Berlin, Germany).

Filament stability assay in yeast cell lysate

Gln1(R23E)-mCherry expressing yeast were grown to an OD₆₀₀ of ~ 0.4. The cells were harvested by centrifugation and washed twice with water. 1 ml of XL buffer (1.2 M Sorbitol, 5 mM EDTA, 0.1 M KH₂PO₄/K₂HPO₄ pH 7.5) and 12 µl 10 mg/ml lyticase were added to 10 ODs of harvested cells and the cells were incubated for 40 minutes at 30°C on a rotator. The spheroplasts were harvested by centrifugation and resuspended in lysis buffer (100 mM potassium phosphate, pH 6.3, 150 mM KCl, 20 mM NaCl₂, 5 mM MgCl₂, 1 mM DTT, 1% Triton X-100) containing protease inhibitors (1.25 mM benzamidin, 10 µg/ml pepstatin, 10 µg/ml chymostatin, 10 µg/ml aprotinin, 10 µg/ml leupeptin, 10 µg/ml E-64 and 0.4 mM PMSF). Cells were lysed on a bead beater for 20 minutes and immediately transferred onto a glass slide for analysis by fluorescence microscopy. The buffer in experiment Figure 3B contained 200 mg/ml Ficoll 70 and in Figure 4A the pH was adjusted to 5, 6, 7

or 8.

Purification of Gln1 from bacteria and yeast

For purification of Gln1 from bacteria, wildtype and variant (E186K, R23E) Gln1 were expressed as 6xHis fusions in *E. coli* BL21 DE3. His-tagged proteins were purified to ~ 99% purity from bacterial lysates using a HisTrap HP column (GE Healthcare) and a gradient elution profile according to the manufacturer's protocol. For purification of Gln1 from yeast, 6xHis-Gln1-V5 and 6xHis-Gln1-mCherry were expressed in W303 *ADE+ gln1::SpHIS5* cells. Cell lysis was carried out in lysis buffer (50 mM $\text{KH}_2\text{PO}_4/\text{K}_2\text{HPO}_4$, pH 8, 150 mM KCl, 20 mM NaCl) containing protease inhibitors (1.25 mM benzamidin, 10 $\mu\text{g}/\text{ml}$ pepstatin, 10 $\mu\text{g}/\text{ml}$ chymostatin, 10 $\mu\text{g}/\text{ml}$ aprotinin, 10 $\mu\text{g}/\text{ml}$ leupeptin, 10 $\mu\text{g}/\text{ml}$ E-64 and 0.4 mM PMSF). His-tagged proteins were purified at 4°C using Ni-NTA agarose according to the manufacturer's protocol for native purification in a batch format (Qiagen). Relative concentrations of purified proteins were determined by Western blotting using anti-V5 or anti-mCherry antibodies (see supplemental file 1).

***In vitro* assembly of Gln1**

Yeast-purified mCherry-tagged Gln1 was mixed 1:5 with a 0.1 M phosphate-citrate (pH 5 or 7) or phosphate buffer (pH 8) and incubated at room temperature for one hour. During the incubation period the samples were shaken in a thermomixer at 1000 rpm. Crowding samples contained polyethyleneglycol (average molecular weight 20 kDa) at a concentration of

70 mg/ml. After one hour the samples were transferred onto a glass slide and analyzed by fluorescence microscopy.

Dynamic light scattering (DLS) of purified protein

DLS measurements were performed using a Zetasizer instrument (Malvern). 100 µg of wildtype or variant Gln1 were diluted in equal volumes of a HEPES buffer (pH 6.5) containing 150 mM KCl, 20 mM NaCl, 5 mM MgCl and 1 mM DTT in a low binding microcentrifuge tube. The samples were rotated for 1 hour at room temperature. 50 µl of the samples were transferred into a small volume DLS cuvette and placed inside the measurement chamber. The shown values are average values obtained from 20 measurements at room temperature.

Gel filtration of purified proteins

100 µg of purified wildtype and variant Gln1 was loaded onto a Superose 6HR 10/30 column (GE Healthcare). Eluates were collected as 300 µl fractions and were applied onto a nitrocellulose membrane by using the mini-fold dot blot system (Whatman). Proteins on the membrane were detected by immunoblotting with an anti-His antibody.

Negative staining of purified 6xHis-tagged Gln1(R23E) for TEM

Different dilutions of purified 6xHis-tagged Gln1(R23E) were prepared in buffer A (100 mM potassium phosphate, pH 6.3, 150 mM KCl, 20 mM NaCl, 5 mM MgCl₂, 1 mM DTT). 3 µl of the sample was deposited for 1 min on glow-discharged, carbon-coated EM mesh grids. After blotting, samples were fixed

with 1 % glutaraldehyde in water. The grids were washed once in water and stained with 2 % uranyl acetate. After drying, grids were imaged in TEM (same setup as used for TEM on yeast cells).

Glutamine synthetase activity assay

Synthetase assays were carried out with yeast cell lysate as described previously (Mitchell and Magasanik, 1984).

ACKNOWLEDGEMENTS

We thank several members of the MPI-CBG for critical reading of the manuscript. We are grateful to the MPG and the DIGS-BB program for funding.

REFERENCES

- Alberti, S., Gitler, A.D., and Lindquist, S. (2007). A suite of Gateway cloning vectors for high-throughput genetic analysis in *Saccharomyces cerevisiae*. *Yeast* 24, 913-919.
- Alberti, S., Halfmann, R., King, O., Kapila, A., and Lindquist, S. (2009). A systematic survey identifies prions and illuminates sequence features of prionogenic proteins. *Cell* 137, 146-158.
- Andresen, M., Schmitz-Salue, R., and Jakobs, S. (2004). Short tetracysteine tags to beta-tubulin demonstrate the significance of small labels for live cell imaging. *Molecular biology of the cell* 15, 5616-5622.
- Barry, R.M., and Gitai, Z. (2011). Self-assembling enzymes and the origins of the cytoskeleton. *Current opinion in microbiology* 14, 704-711.
- Bernstein, B.W., and Bamburg, J.R. (2010). ADF/Cofilin: a functional node in cell biology. *Trends in Cell Biology* 20, 187-195.
- Bernstein, B.W., Chen, H., Boyle, J.A., and Bamburg, J.R. (2006). Formation of actin-ADF/cofilin rods transiently retards decline of mitochondrial potential and ATP in stressed neurons. *Am J Physiol-Cell Ph* 291, C828-C839.

Brangwynne, C.P. (2011). Soft active aggregates: mechanics, dynamics and self-assembly of liquid-like intracellular protein bodies. *Soft Matter* 7, 3052-3059.

Brangwynne, C.P., Eckmann, C.R., Courson, D.S., Rybarska, A., Hoegge, C., Gharakhani, J., Julicher, F., and Hyman, A.A. (2009). Germline P granules are liquid droplets that localize by controlled dissolution/condensation. *Science (New York, NY)* 324, 1729-1732.

Brangwynne, C.P., Mitchison, T.J., and Hyman, A.A. (2011). Active liquid-like behavior of nucleoli determines their size and shape in *Xenopus laevis* oocytes. *Proceedings of the National Academy of Sciences of the United States of America* 108, 4334-4339.

Brett, C.L., Tukaye, D.N., Mukherjee, S., and Rao, R. (2005). The yeast endosomal Na⁺K⁺/H⁺ exchanger Nhx1 regulates cellular pH to control vesicle trafficking. *Molecular biology of the cell* 16, 1396-1405.

Busa, W.B., and Nuccitelli, R. (1984). Metabolic regulation via intracellular pH. *Am J Physiol* 246, R409-438.

Dechant, R., Binda, M., Lee, S.S., Pelet, S., Winderickx, J., and Peter, M. (2010). Cytosolic pH is a second messenger for glucose and regulates the PKA pathway through V-ATPase. *The EMBO journal* 29, 2515-2526.

Gross, J.D., Bradbury, J., Kay, R.R., and Peacey, M.J. (1983). Intracellular pH and the control of cell differentiation in *Dictyostelium discoideum*. *Nature* 303, 244-245.

Gueldener, U., Heinisch, J., Koehler, G.J., Voss, D., and Hegemann, J.H. (2002). A second set of loxP marker cassettes for Cre-mediated multiple gene knockouts in budding yeast. *Nucleic acids research* 30, e23.

He, Y.X., Gui, L., Liu, Y.Z., Du, Y., Zhou, Y., Li, P., and Zhou, C.Z. (2009). Crystal structure of *Saccharomyces cerevisiae* glutamine synthetase Gln1 suggests a nanotube-like supramolecular assembly. *Proteins* 76, 249-254.

Hyman, A.A., and Simons, K. (2012). Cell biology. Beyond oil and water--phase transitions in cells. *Science (New York, NY)* 337, 1047-1049.

Ingerson-Mahar, M., Briegel, A., Werner, J.N., Jensen, G.J., and Gitai, Z. (2010). The metabolic enzyme CTP synthase forms cytoskeletal filaments. *Nature cell biology* 12, 739-746.

Klosinska, M.M., Crutchfield, C.A., Bradley, P.H., Rabinowitz, J.D., and Broach, J.R. (2011). Yeast cells can access distinct quiescent states. *Genes Dev* 25, 336-349.

Laporte, D., Courtout, F., Salin, B., Ceschin, J., and Sagot, I. (2013). An array of nuclear microtubules reorganizes the budding yeast nucleus during quiescence. *The Journal of cell biology* 203, 585-594.

Laporte, D., Lebaudy, A., Sahin, A., Pinson, B., Ceschin, J., Daignan-Fornier, B., and Sagot, I. (2011). Metabolic status rather than cell cycle signals control quiescence entry and exit. *The Journal of cell biology* *192*, 949-957.

Laporte, D., Salin, B., Daignan-Fornier, B., and Sagot, I. (2008). Reversible cytoplasmic localization of the proteasome in quiescent yeast cells. *The Journal of cell biology* *181*, 737-745.

Li, P., Banjade, S., Cheng, H.C., Kim, S., Chen, B., Guo, L., Llaguno, M., Hollingsworth, J.V., King, D.S., Banani, S.F., *et al.* (2012). Phase transitions in the assembly of multivalent signalling proteins. *Nature* *483*, 336-340.

Liu, I.C., Chiu, S.W., Lee, H.Y., and Leu, J.Y. (2012). The histone deacetylase Hos2 forms an Hsp42-dependent cytoplasmic granule in quiescent yeast cells. *Molecular biology of the cell* *23*, 1231-1242.

Marenduzzo, D., Finan, K., and Cook, P.R. (2006). The depletion attraction: an underappreciated force driving cellular organization. *The Journal of cell biology* *175*, 681-686.

Minton, A.P. (2001). The influence of macromolecular crowding and macromolecular confinement on biochemical reactions in physiological media. *J Biol Chem* *276*, 10577-10580.

Mitchell, A.P., and Magasanik, B. (1984). Biochemical and physiological aspects of glutamine synthetase inactivation in *Saccharomyces cerevisiae*. *J Biol Chem* *259*, 12054-12062.

Moolenaar, W.H. (1986). Effects of growth factors on intracellular pH regulation. *Annu Rev Physiol* *48*, 363-376.

Narayanaswamy, R., Levy, M., Tsechansky, M., Stovall, G.M., O'Connell, J.D., Mirrieles, J., Ellington, A.D., and Marcotte, E.M. (2009). Widespread reorganization of metabolic enzymes into reversible assemblies upon nutrient starvation. *Proceedings of the National Academy of Sciences of the United States of America* *106*, 10147-10152.

Noree, C., Sato, B.K., Broyer, R.M., and Wilhelm, J.E. (2010). Identification of novel filament-forming proteins in *Saccharomyces cerevisiae* and *Drosophila melanogaster*. *The Journal of cell biology* *190*, 541-551.

O'Connell, J.D., Zhao, A., Ellington, A.D., and Marcotte, E.M. (2012). Dynamic reorganization of metabolic enzymes into intracellular bodies. *Annu Rev Cell Dev Biol* *28*, 89-111.

Orij, R., Brul, S., and Smits, G.J. (2011). Intracellular pH is a tightly controlled signal in yeast. *Bba-Gen Subjects* *1810*, 933-944.

Orij, R., Postmus, J., Ter Beek, A., Brul, S., and Smits, G.J. (2009). In vivo measurement of cytosolic and mitochondrial pH using a pH-sensitive GFP derivative in *Saccharomyces cerevisiae* reveals a relation between intracellular pH and growth. *Microbiol-Sgm* *155*, 268-278.

Orij, R., Urbanus, M.L., Vizeacoumar, F.J., Giaever, G., Boone, C., Nislow, C., Brul, S., and Smits, G.J. (2012). Genome-wide analysis of intracellular pH reveals quantitative control of cell division rate by pH(c) in *Saccharomyces cerevisiae*. *Genome Biology* 13.

Parry, B.R., Surovtsev, I.V., Cabeen, M.T., O'Hern, C.S., Dufresne, E.R., and Jacobs-Wagner, C. (2014). The Bacterial Cytoplasm Has Glass-like Properties and Is Fluidized by Metabolic Activity. *Cell* 156, 183-194.

Peters, L.Z., Hazan, R., Breker, M., Schuldiner, M., and Ben-Aroya, S. (2013). Formation and dissociation of proteasome storage granules are regulated by cytosolic pH. *The Journal of cell biology* 201, 663-671.

Pintsch, T., Satre, M., Klein, G., Martin, J.B., and Schuster, S.C. (2001). Cytosolic acidification as a signal mediating hyperosmotic stress responses in *Dictyostelium discoideum*. *BMC cell biology* 2, 9.

Sagot, I., Pinson, B., Salin, B., and Daignan-Fornier, B. (2006). Actin bodies in yeast quiescent cells: an immediately available actin reserve? *Molecular biology of the cell* 17, 4645-4655.

Sheff, M.A., and Thorn, K.S. (2004). Optimized cassettes for fluorescent protein tagging in *Saccharomyces cerevisiae*. *Yeast* 21, 661-670.

Srere, P.A. (1987). Complexes of sequential metabolic enzymes. *Annual review of biochemistry* 56, 89-124.

Webb, B.A., Chimenti, M., Jacobson, M.P., and Barber, D.L. (2011). Dysregulated pH: a perfect storm for cancer progression. *Nat Rev Cancer* 11, 671-677.

Wilson, M.Z., and Gitai, Z. (2013). Beyond the cytoskeleton: mesoscale assemblies and their function in spatial organization. *Current opinion in microbiology* 16, 177-183.

Yeates, T.O., Crowley, C.S., and Tanaka, S. (2010). Bacterial microcompartment organelles: protein shell structure and evolution. *Annu Rev Biophys* 39, 185-205.

Zetterberg, A., and Engstrom, W. (1981). Mitogenic effect of alkaline pH on quiescent, serum-starved cells. *Proceedings of the National Academy of Sciences of the United States of America* 78, 4334-4338.

FIGURE LEGENDS

Figure 1. Gln1 assembles into filaments in energy-depleted yeast cells. (A)

Yeast cells expressing mCherry-tagged Gln1 from the endogenous promoter

were washed twice with water and resuspended in synthetic media (left, control) or citrate buffer of pH 6 (right, “starved”). White lines are the cell boundaries. The scale bar is 5 μm . (B) Log phase yeast cells expressing mCherry-tagged Gln1 were washed twice with water and resuspended in synthetic media without (left) or with (right) 2 % glucose. Images were taken 4 hours after onset of glucose starvation. The numbers in yellow give the percentage of cells with fluorescent foci. At least 200 cells were counted. (C) Log phase cells expressing mCherry-tagged Gln1 were washed twice with water and resuspended in a phosphate-citrate buffer of pH 6 without (left) or with (right) 2 % glucose. Images were taken 4 hours after onset of starvation. White lines are the cell boundaries. The numbers in yellow give the percentage of cells with fluorescent foci. At least 200 cells were counted. (D) Cells expressing Gln1-mCherry were washed twice with water and resuspended in a phosphate-citrate buffer of pH 6 to induce starvation (time point 0). Filament formation was followed by time-lapse microscopy. Individual time points are indicated in minutes. The white arrow designates an emerging filament. The scale bar is 5 μm . Also see the corresponding Videos 1. (E) Same as (D) except that filament dissolution was investigated by re-adding glucose to cells that had been starved for 4 hours. The white arrow points to a small filament. The red arrow designates the emerging bud. Also see the corresponding Video 3.

Figure 1 – figure supplement 1. GFP-tagged Gln1 predominantly forms punctate structures. Yeast cells expressing GFP-tagged Gln1 from the endogenous promoter were washed twice with water and resuspended in

synthetic media (left, control) or buffer of pH 6 (right, “starved”). White lines are the cell boundaries. The scale bar is 5 μm .

Figure 1 – figure supplement 2. Co-expression of untagged Gln1 transforms the localization pattern from punctate to filamentous. Yeast cells expressing GFP-tagged Gln1 from the endogenous promoter were washed twice with water and resuspended in synthetic media (left, control) or buffer of pH 6 (right, “starved”). The cells co-expressed untagged Gln1 from a plasmid.

Figure 1 – figure supplement 3. Filamentation is not caused by the tag. Yeast cells expressing tetracystein-tagged Gln1 were incubated over night with FIAsh-EDT₂ to label Gln1. The cells were washed twice with water and resuspended in a phosphate-citrate buffer to induce starvation (pH 6). Images were taken 4 hours after onset of starvation. White lines denote the cell boundaries. The scale bar is 5 μm .

Figure 2. Gln1 assembles by a back-to-back stacking mechanism. (A) The crystal structure of Gln1 as reported by He et al. (2009). The putative assembly interface and mutations introduced in this study are indicated. (B) Chromosomally encoded Gln1 was replaced with mCherry-tagged wildtype or variant Gln1 expressed from a plasmid. The strains were washed twice with water and resuspended in synthetic media (left, control) or buffer (right, “starved”). The numbers in yellow give the percentage of cells with fluorescent foci. At least 200 cells were counted. The scale bar is 5 μm . (C) Wildtype or variant 6xHis-Gln1-V5 was purified from yeast and analyzed by blue native

PAGE. Proteins were detected by silver staining (top) or immunoblotting with an antibody that recognized a C-terminal V5 tag (bottom). The red arrow denotes a band that corresponds to two stacked decamers. The calculated size of a Gln1 decamer is 420 KDa. (D) Correlative light electron microscopy (CLEM) was performed on yeast cells expressing the R23E variant of Gln1 as mCherry fusion. The black dots are fluorescent beads that were introduced to facilitate the alignment of the fluorescence and TEM images. The scale bar is 500 μm .

Figure 2 – figure supplement 1. Detailed structural view of the decamer-decamer interface. All critical residues are shown within a range of 10 Å. Residues mutated in this study are highlighted in red. The subunit identifier is given in brackets. The red arrow denotes the disordered N terminus. The mutations introduced were E186K, R23E and T49E.

Figure 2 – figure supplement 2. Detailed structural view of the decamer-decamer interface. All critical residues are shown within a range of 10 Å. Residues mutated in this study are highlighted in red. The subunit identifier is given in brackets. The red arrow denotes the disordered N terminus. The mutations introduced were R23E, T49E and Y81A.

Figure 2 – figure supplement 3. Detailed structural view of the decamer-decamer interface. All critical residues are shown within a range of 10 Å. Residues mutated in this study are highlighted in red. The subunit identifier is

given in brackets. The red arrow denotes the disordered N terminus. The mutation introduced was P83R.

Figure 2 – figure supplement 4. Transmission electron microscopy (TEM) was performed on yeast cells expressing untagged Gln1(R23E). The red arrow points to filamentous structures in the cytoplasm. Similar structures were absent from control cells expressing untagged Gln1. The scale bar is 200 nm.

Figure 3. Self-assembly into filaments is driven by macromolecular crowding. (A) Equal amounts of 6xHis-tagged wildtype and variant Gln1 purified from bacteria were subjected to dynamic light scattering. Shown is the volume distribution that was derived from the intensity distribution. Note the different scales of the x axes. (B) Yeast cells expressing Gln1(R23E)-mCherry were spheroplasted and lysed. Images were acquired from harvested, spheroplasted, and lysed cells. Images were taken at the same intensity settings. The inset is the corresponding DIC image. The scale bar is 5 μm . (C) Cells were treated as in (A) except that the lysis buffer contained Ficoll 70 at a concentration of 200 mg/ml. (D) Gln1-mCherry was purified from yeast and incubated in a phosphate-citrate buffer of pH 7 with or without a crowding agent for 1 hour. Samples were analyzed by fluorescence microscopy and images were taken at the same intensity settings. The scale bar is 3 μm .

Figure 3 – figure supplement 1. Gel filtration of wildtype and variant 6xHis-tagged Gln1 purified from bacteria. Fractions were applied onto a

nitrocellulose filter by using a dot blot apparatus. Molecular weight markers were thyroglobulin (660kDa), ferritin (440kDa), catalase (230kD), bovine serum albumin (67kDa), and ovalbumin (43kDa).

Figure 3 – figure supplement 2. Electron microscopy of 6xHis-tagged R23E Gln1 purified from bacteria. Note the formation of chains, which indicate enzyme stacking by a back-to-back mechanism. The scale bar is 20 nm.

Figure 3 – figure supplement 3. 6xHis-Gln1-mCherry was affinity purified from yeast and assembled in the presence of a crowder. The sample was investigated by fluorescence microscopy. Acquired images were deconvolved to increase the signal to noise ratio. The shown image is a maximum intensity projection of 20 individual images that were acquired with 200 nm sectioning. Note the presence of filamentous structures of varying thickness (numbers 1, 2 and 3), indicating the formation of higher order fibrils from laterally aligning filaments.

Figure 4. A drop in intracellular pH triggers filament formation. (A) Yeast cells expressing Gln1(R23E)-mCherry were spheroplasted and lysed in phosphate buffers of different pHs. Images were acquired immediately after lysis. The scale bar is 5 μ m. Note that the lysis buffer did not contain a crowder. (B) Yeast cells expressing mCherry-tagged Gln1 were washed twice with water and resuspended in a glucose-containing buffer of the indicated pHs with or without the proton carrier 2,4-dinitrophenol (DNP). Images were taken one hour after addition of the buffer. The scale bar is 5 μ m. (C) Yeast cells

expressing Gln1-mCherry were washed twice with water and resuspended in phosphate buffers of different pHs to induce starvation. The buffers contained proton carriers and energy inhibitors for rapid equilibration of inside and outside pH. The scale bar is 5 μm . (D) Gln1-mCherry was purified from yeast and incubated in an acidic or basic buffer containing a crowding agent for 1 hour. Samples were analyzed by fluorescence microscopy. The scale bar is 3 μm .

Figure 5. Other metabolic enzymes form filaments in a pH-dependent manner. (A) Yeast cells expressing sfGFP(V206R)-tagged Ura8, Glt1, or Gcn3 were washed twice with water and resuspended in buffers of different pHs to induce starvation. Images were taken two hours after onset of starvation. The scale bar is 5 μm . (B) Yeast cells expressing sfGFP(V206R)-tagged Ura8, Glt1, or Gcn3 were washed twice with water and resuspended in a buffer containing 2 % glucose and the proton carrier 2,4-dinitrophenol (DNP). Images were taken one hour after addition of the buffer. The numbers in yellow give the percentage of cells with fluorescent foci. At least 200 cells were counted. The scale bar is 5 μm .

Figure 6. Assembled Gln1 is catalytically inactive but becomes active again after disassembly. (A) Lysates were prepared from wildtype cells exposed to advanced starvation conditions for 3, 6 or 24 hours, and the glutamine synthetase activity was determined as described previously (Mitchell and Magasanik, 1984). The obtained values were normalized to the amount of Gln1 in the cell lysate based on immunoblotting experiments. The shown data

is the mean of 5 biological replicates (+/- SEM). (B) Lysates were prepared from yeast cells expressing wildtype or variant Gln1-V5 and the glutamine synthetase activity was determined as in (A). The values were normalized to the amount of Gln1 contained in the lysate based on immunoblotting experiments (* p value < 0.05). (C) Endogenous Gln1 was substituted with the indicated wildtype or variant versions expressed from an *ADH1* promoter-containing plasmid. Cells were grown over night and equal amounts of late log phase cells were spotted onto synthetic plates in serial 1:5 dilutions. (D) Cells expressing Gln1-mCherry from a *GAL*-inducible promoter were washed twice with water and starved in a phosphate-citrate buffer of pH 6 for 4 hours. Filament dissolution was followed after re-addition of glucose by time-lapse imaging. The red arrow denotes the newly formed bud. Note that filament dissolution and bud emergence take longer as the cells had to readjust to a new carbon source (glucose instead of galactose). The scale bar is 5 μ m. Also see corresponding Video 5. (E) Wildtype and mutant (Y81A) yeast were exposed to advanced starvation conditions and re-growth was monitored after addition of nutrients (we used only 0.5% glucose in this assay as this led to slower regrowth and a more pronounced lag phase). Note that the Y81A cultures reached a slightly higher optical density, probably because of compensatory changes in the gene expression network. The values show the mean of 4 technical replicates.

Figure 6 – figure supplement 1. Gln1 filaments form progressively after exposure of yeast to advanced starvation conditions. Cells expressing Gln1-mCherry were washed twice with water and resuspended in a phosphate-

citrate buffer of pH 6 to induce starvation. Images were acquired 0, 3, 6, and 24 hours after onset of starvation. The total cellular mCherry signal was segmented into a diffuse and filament fraction using the Squassh segmentation tool from The Mosaic Suite for Fiji. The values shown are the mean (+/- SEM) of three independent experiments ($p < 0.05$). The y-axis gives the fraction of the signal bound up in filaments. The values were normalized to the 24-hour time point as no further filament formation was observed beyond this time point.

Figure 6 – figure supplement 2. The R23E growth defect can be rescued by adding glutamine to the growth medium. Endogenous Gln1 was deleted and substituted with wildtype or variant Gln1 expressed from a plasmid. Cells were grown over night and equal amounts of late log phase cells were spotted onto synthetic plates in serial 1:5 dilutions. The plate media lacked amino acids and contained ammonia or glutamine as the only nitrogen source. The strain background was a prototrophic variant of W303 (Klosinska et al., 2011).

Figure 6 – figure supplement 3. The Y81A mutation does not affect growth. Endogenous Gln1 was substituted with the indicated wildtype or variant versions expressed from an *ADH1* promoter-containing plasmid. Cells were grown over night and equal amounts of late log phase cells were spotted onto synthetic plates in serial 1:5 dilutions.

Figure 6 – figure supplement 4. Filament dissolution is impaired in Y81A mutants. Cells expressing WT or Y81A Gln1-mCherry were washed twice with

water and resuspended in a phosphate-citrate buffer of pH 6 to induce starvation. After 4 hours of starvation, nutrients were resupplied and images were acquired 0, 20, 30, and 55 minutes. The y-axis gives the fraction of cells containing filaments. Mean values are shown (+/- SEM).

Figure 7. (A) Filamentation-inducing starvation conditions promote cellular survival. Acidification of the yeast cytosol regulates survival and recovery from starvation. Yeast cells were exposed to advanced starvation conditions using buffers of diverse pHs for 3 days. Upon re-addition of SD medium containing a limited amount of glucose (0.5%), re-growth was monitored in a plate reader. The values show the mean of 4 technical replicates (+/- SEM). (B) Mechanism of pH-induced filament formation by metabolic enzymes. Gln1 assembles into filaments by a back-to-back enzyme stacking mechanism. Transitions between unassembled Gln1 decamers (left), filaments (middle), and fibrils (right) are driven by pH changes and excluded volume effects. Assembly requires an acidic pH, whereas disassembly requires a basic pH. Gln1 enzyme complexes are shown in green. Blue spheres denote inert macromolecules that are excluded from the space that is occupied by Gln1. This inaccessible space is indicated by the dotted lines. The bottom diagram illustrates the cumulative excluded volume effect that entropically drives filament assembly and fibril formation. The colors of the bottom diagram correspond to the colors of the excluded volume areas above.

VIDEOS

Video 1. Gln1 forms filaments in starved yeast. Cells expressing Gln1-mCherry were washed twice with water and resuspended in a phosphate-citrate buffer of pH 6 to induce starvation (time point 0). Filament formation was followed by time-lapse microscopy. Time points are indicated in minutes.

Video 2. Gln1 forms filaments in starved yeast. Cells expressing Gln1-mCherry were washed twice with water and resuspended in a phosphate-citrate buffer of pH 6 to induce starvation (time point 0). Filament formation was followed by time-lapse microscopy. Time points are indicated in minutes.

Video 3. Gln1 filaments dissolve upon glucose addition to starved cells. Cells expressing Gln1-mCherry were washed twice with water and resuspended in a phosphate-citrate buffer of pH 6 to induce starvation (time point 0). The cells were incubated for 4 hours to induce the formation of filaments. At time point 0, glucose (2 %) was added and filament dissolution was followed by time-lapse microscopy.

Video 4. Gln1 filaments dissolve upon glucose addition to starved cells. Cells expressing Gln1-mCherry were washed twice with water and resuspended in a phosphate-citrate buffer of pH 6 to induce starvation (time point 0). The cells were incubated for 4 hours to induce the formation of filaments. At time point 0, glucose (2 %) was added and filament dissolution was followed by time-lapse microscopy.

Video 5. Filamentous Gln1 can be reactivated upon entry into the cell cycle.

Cells expressing Gln1-mCherry from a *GAL*-inducible promoter were washed twice with water and starved in a phosphate-citrate buffer of pH 6 for 4 hours.

At time point 0, glucose (2 %) was added and filament dissolution was followed by time-lapse microscopy. Note that filament disassembly and bud emergence take longer, because the cells had to readjust to a new carbon source (glucose instead of galactose).

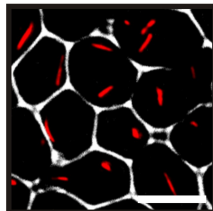
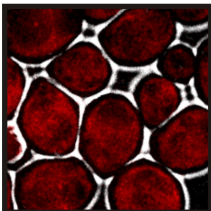
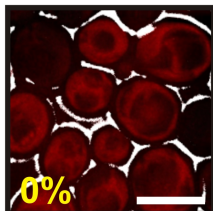
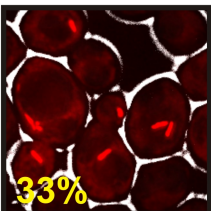
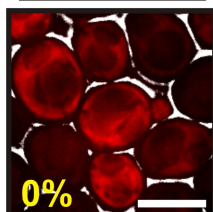
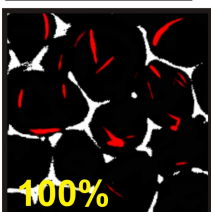
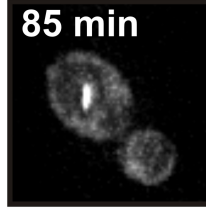
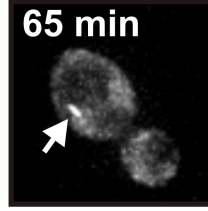
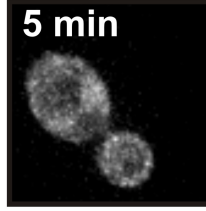
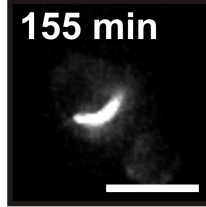
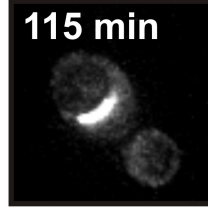
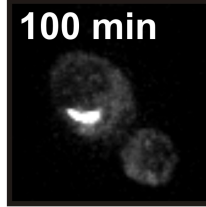
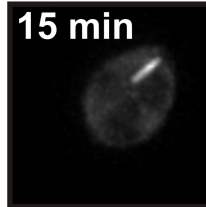
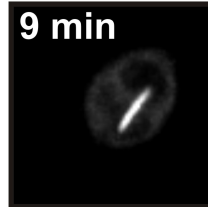
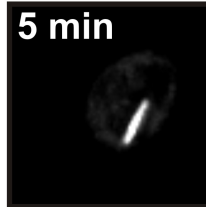
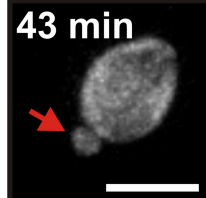
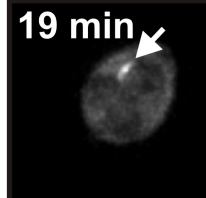
Figure 1**A****Starved****Gln1-mCherry****B****S medium
- glucose****S medium
+ glucose****Gln1-mCherry****C****Buffer****Buffer
+ glucose****Gln1-mCherry****D****Gln1-mCherry, starvation t = 0****5 min****65 min****85 min****100 min****115 min****155 min****E****Gln1-mCherry, glucose added t = 0****5 min****9 min****15 min****19 min****23 min****43 min**

Figure 1 - figure supplement 1

Starved

Gln1-
EGFP

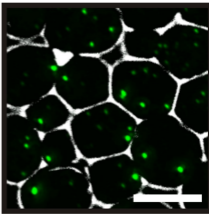
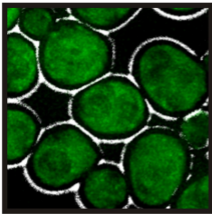


Figure 1 - figure supplement 2

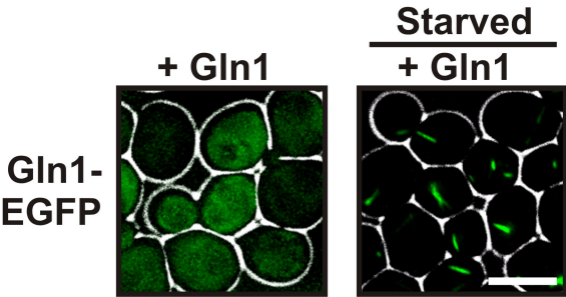


Figure 1 - figure supplement 3

Starved

Gln1-4Cys

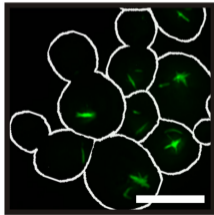
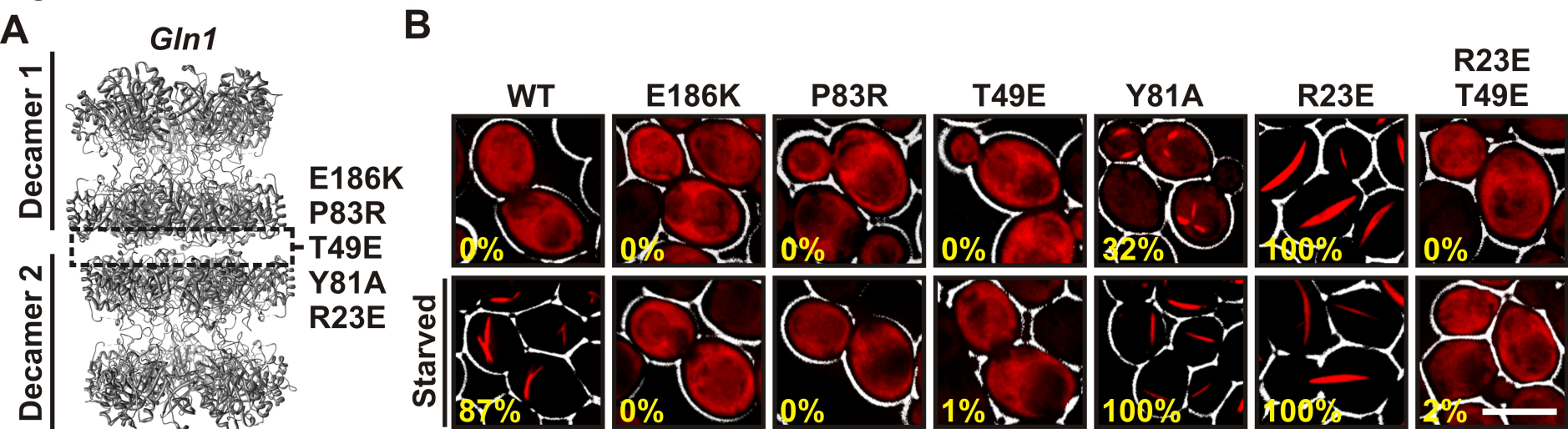
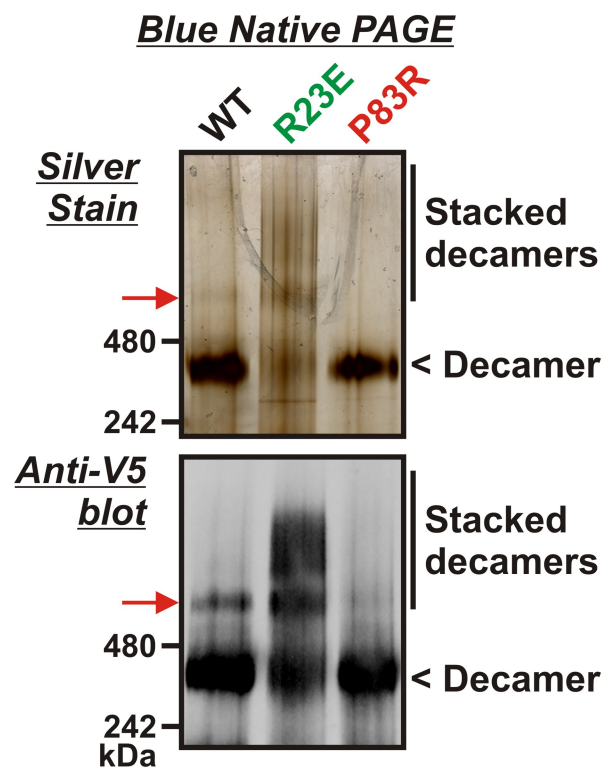


Figure 2



C



D

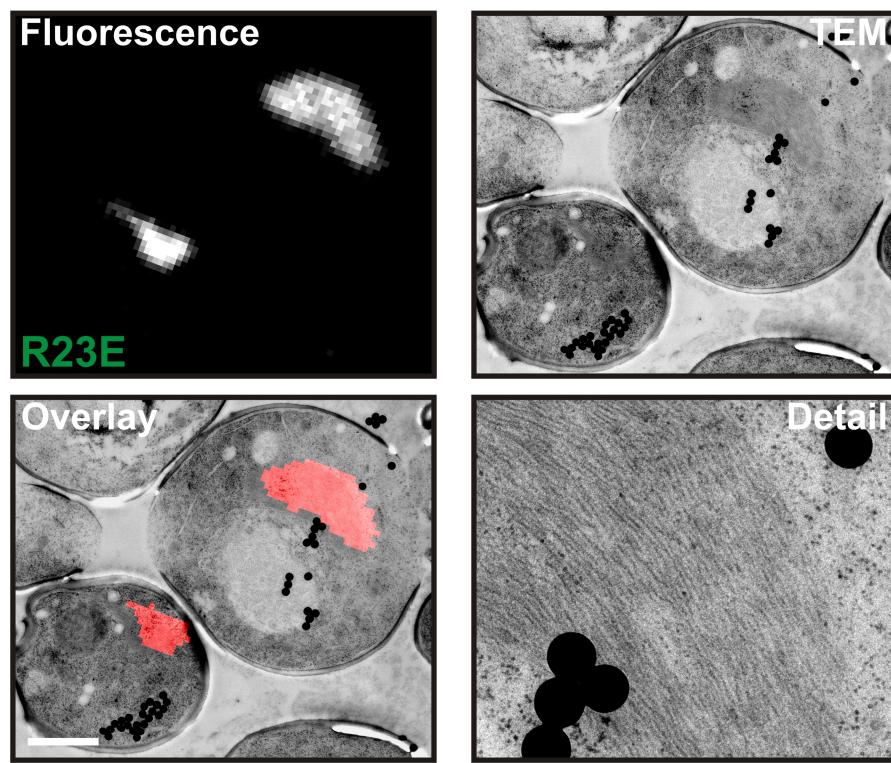


Figure 2 - figure supplement 1

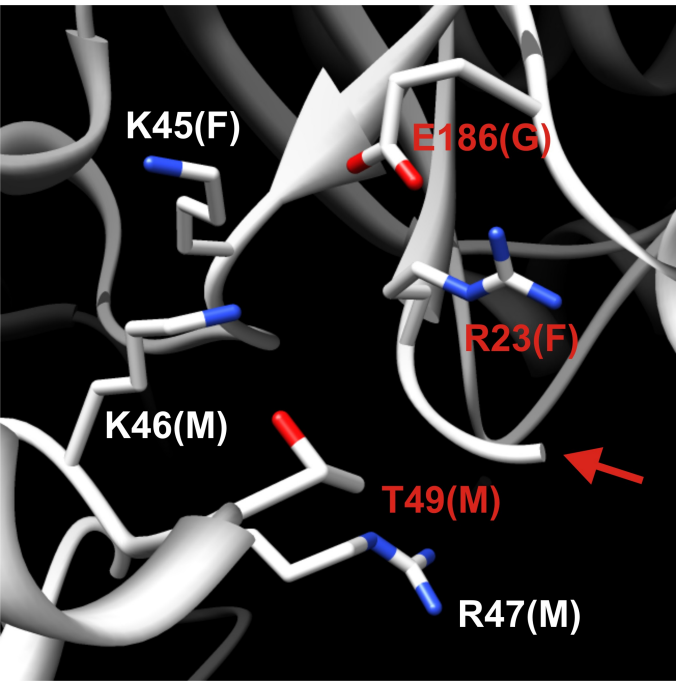


Figure 2 - figure supplement 2

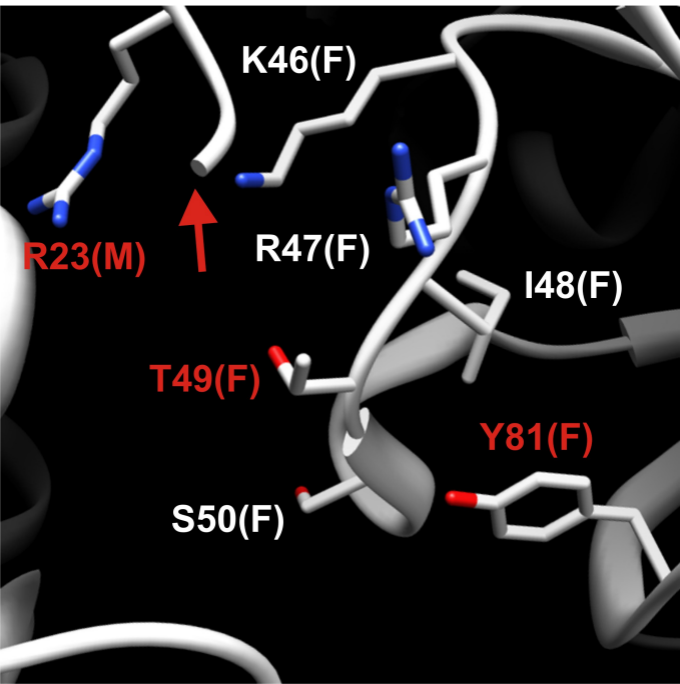


Figure 2 - figure supplement 3

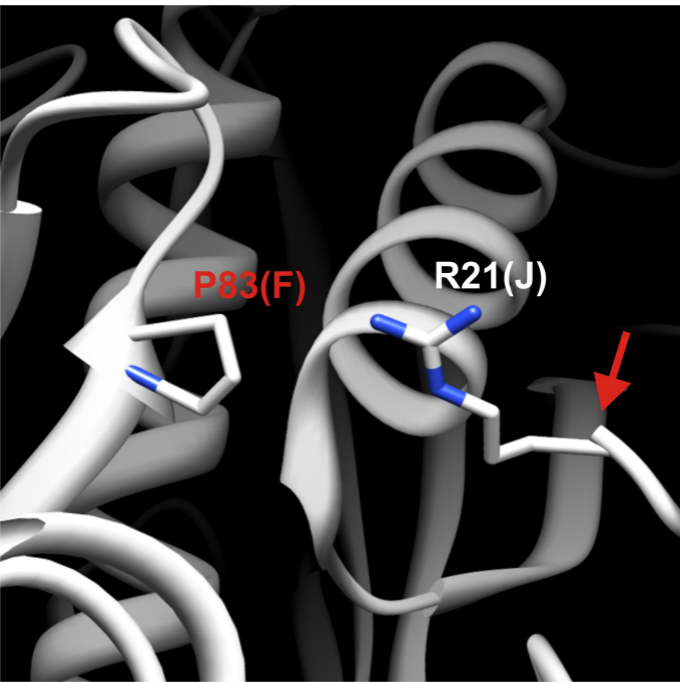


Figure 2 - figure supplement 4

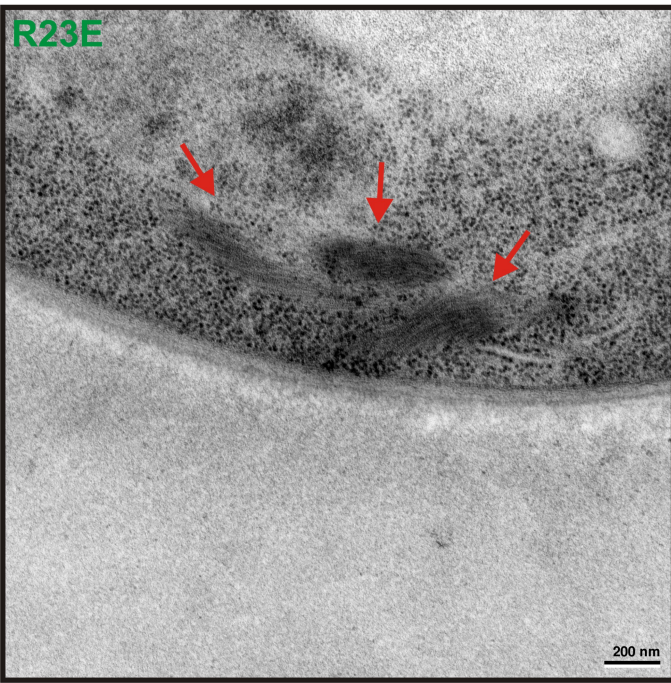
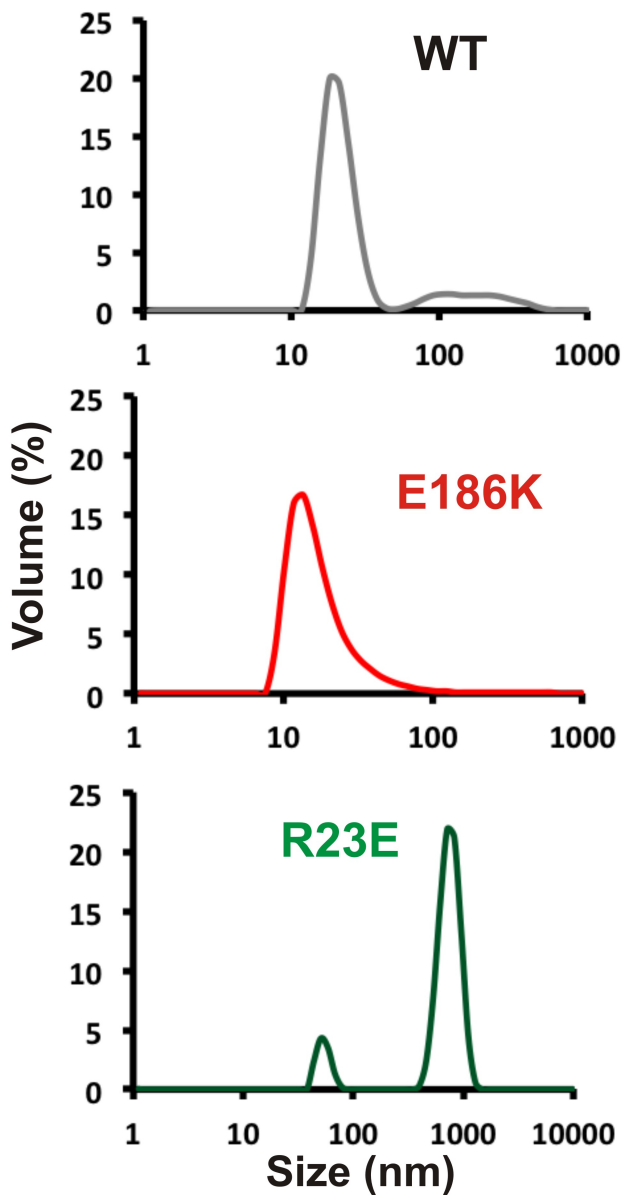


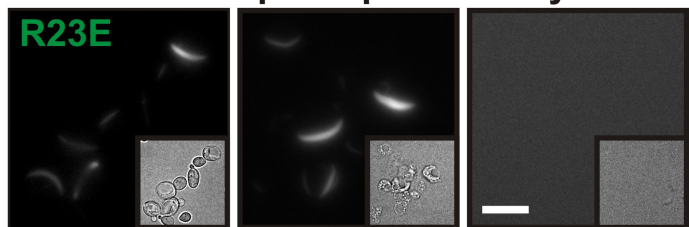
Figure 3

A

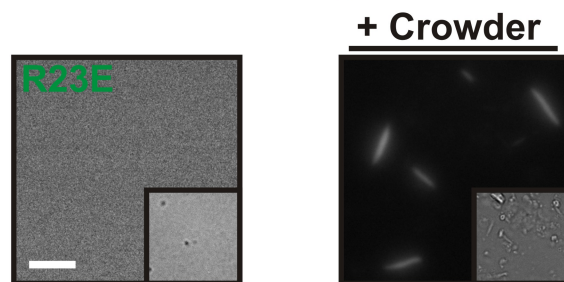
Dynamic light scattering

B

Harvested Spheroplasts Lysed



C

Yeast cell lysate

D

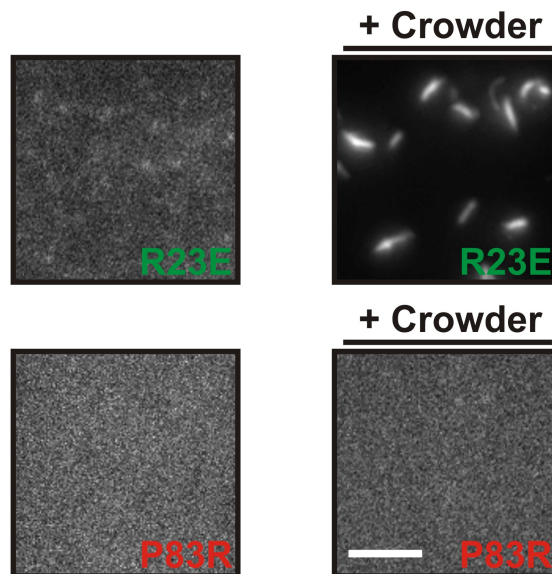
In vitro reconstitution

Figure 3 - figure supplement 1

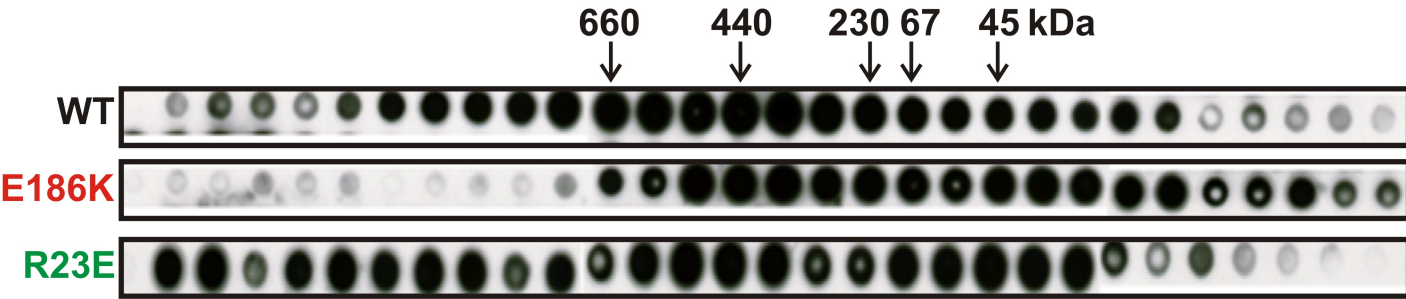


Figure 3 - figure supplement 2

Electron microscopy



Figure 3 - figure supplement 3

In vitro reconstitution

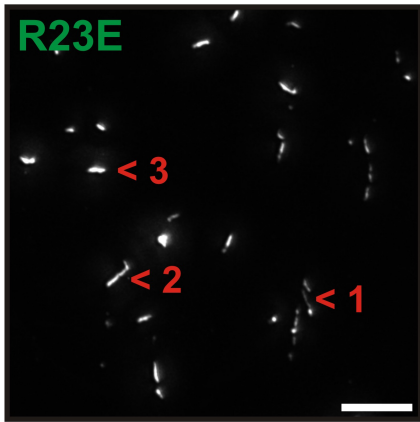
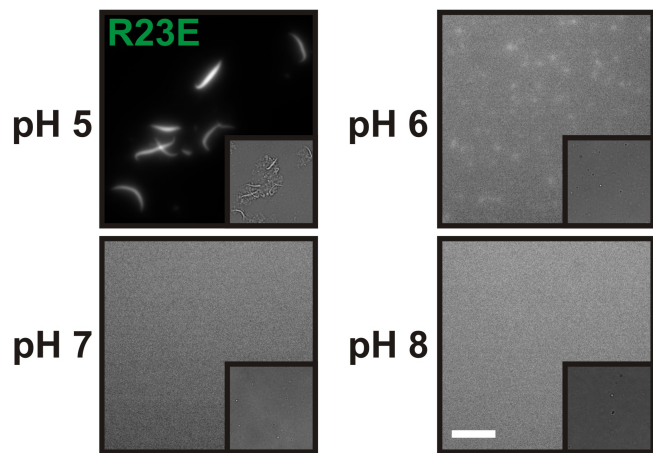
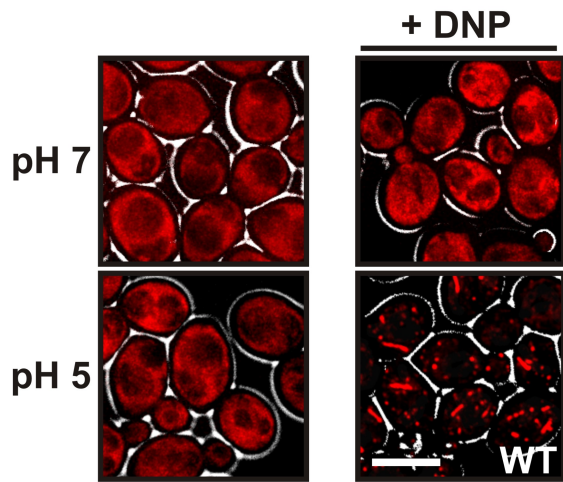


Figure 4

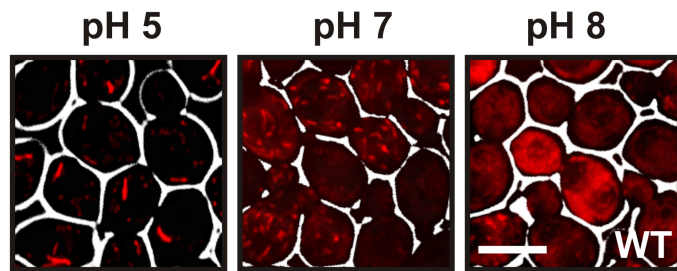
A

Yeast cell lysate

B



C

Starved yeast cells

D

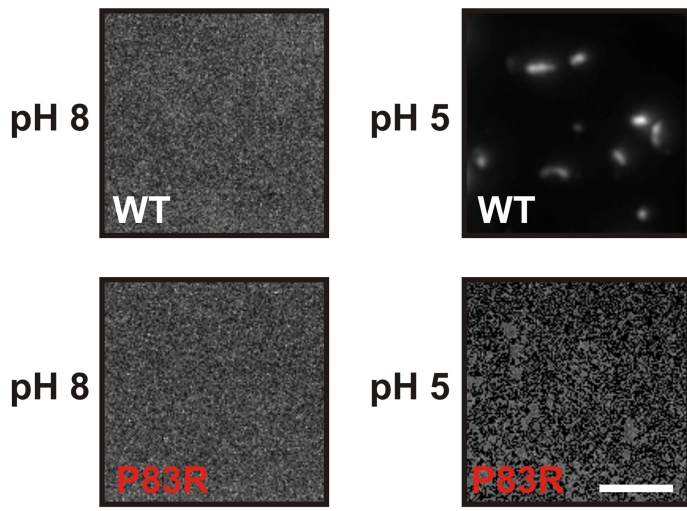
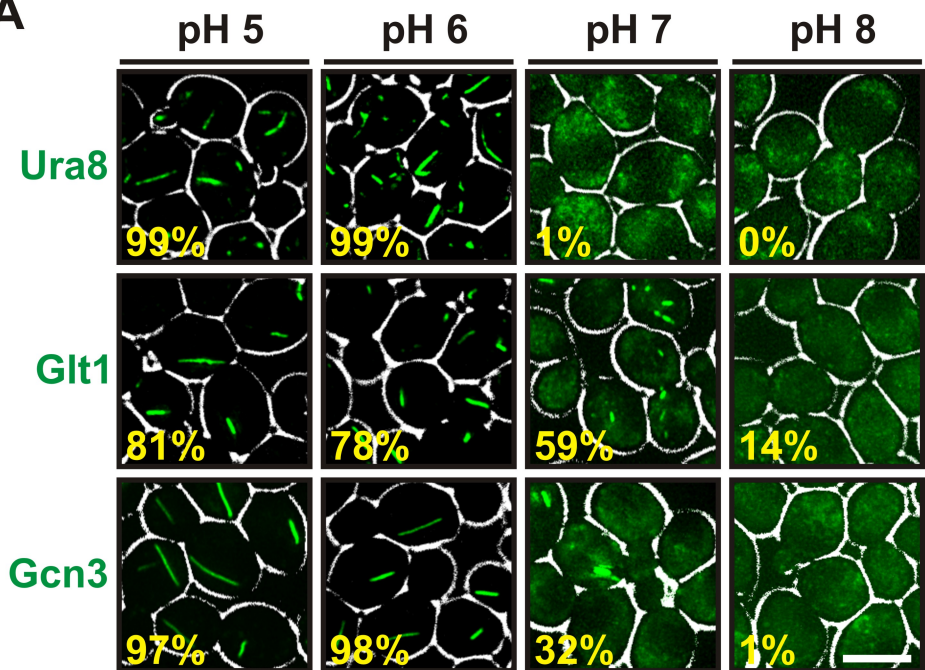
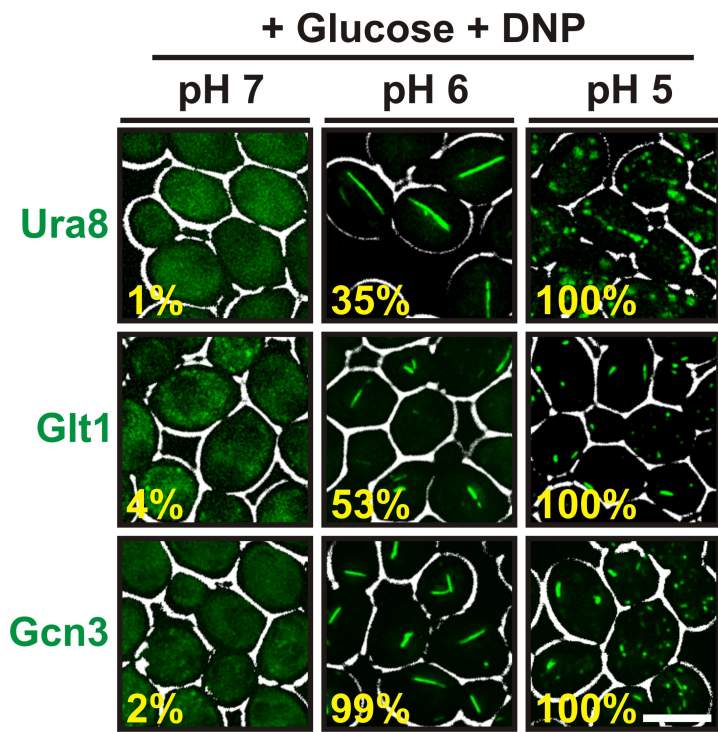
In vitro reconstitution

Figure 5

A



B



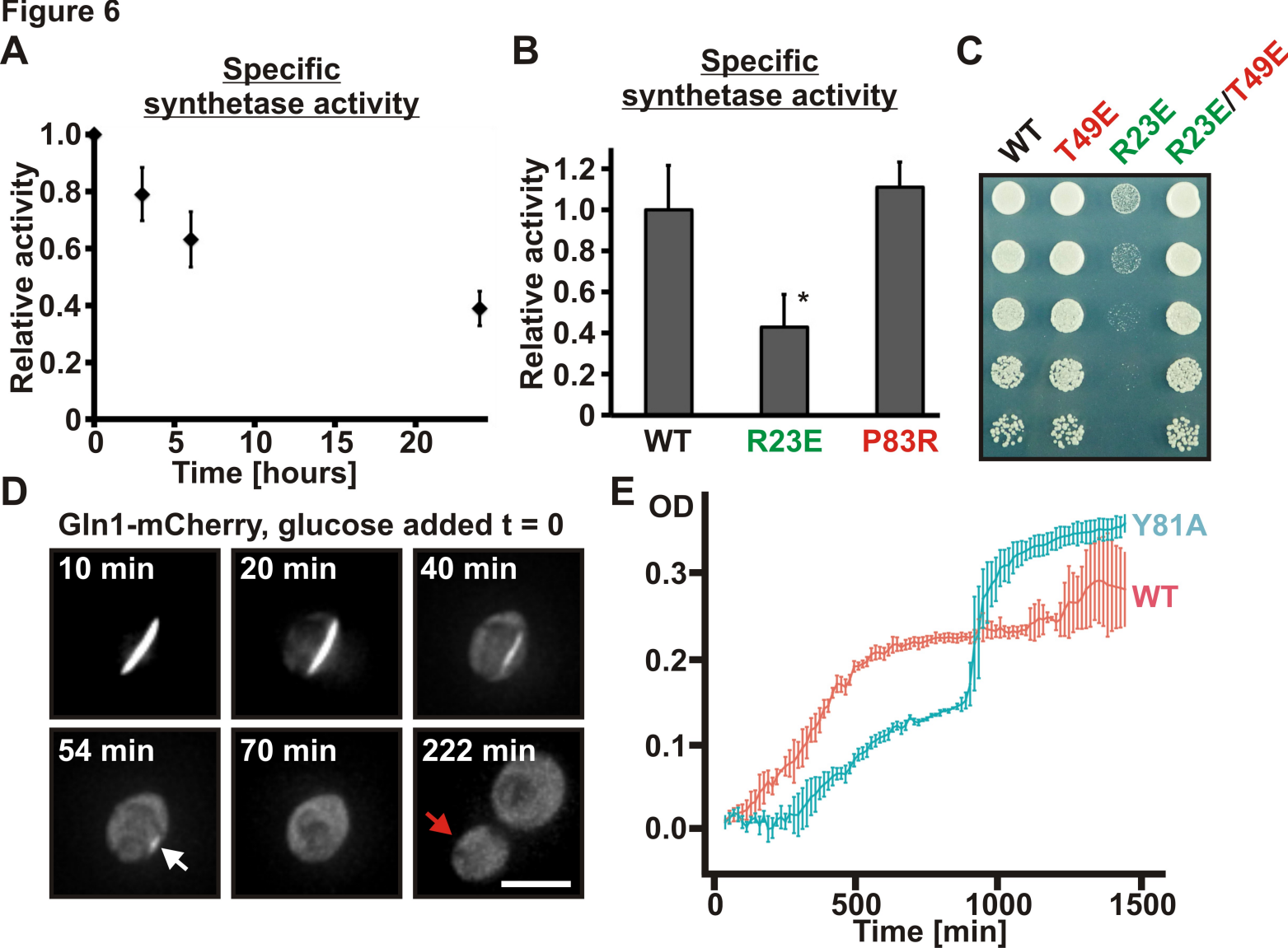


Figure 6 - figure supplement 1

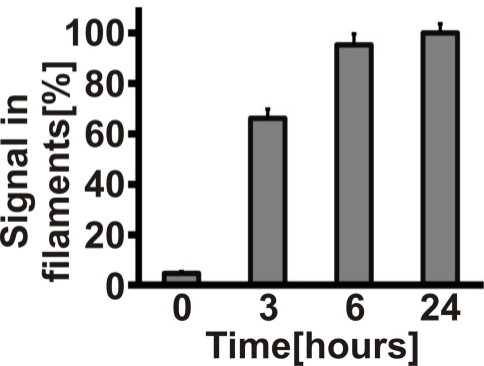


Figure 6 - figure supplement 2

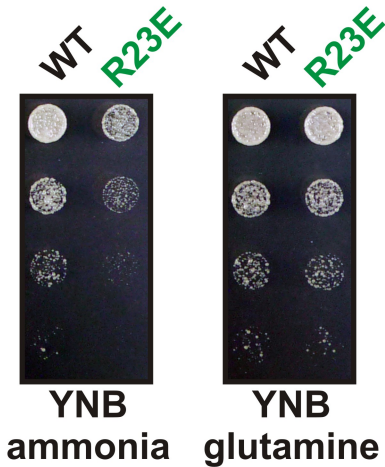


Figure 6 - figure supplement 3

WT T49E P83R R23E Y81A

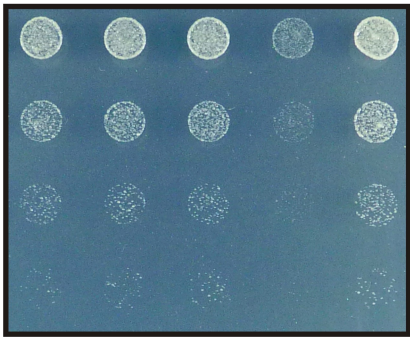


Figure 6 - figure supplement 4

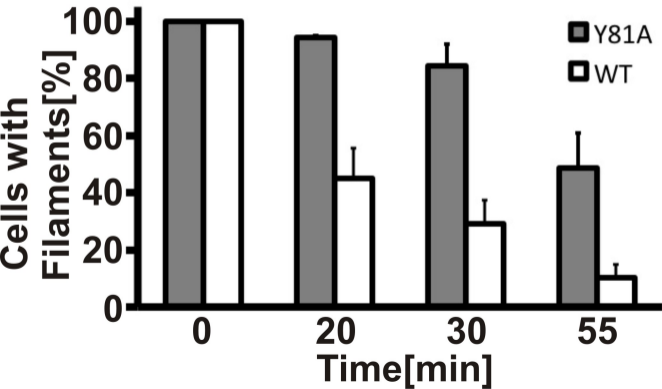
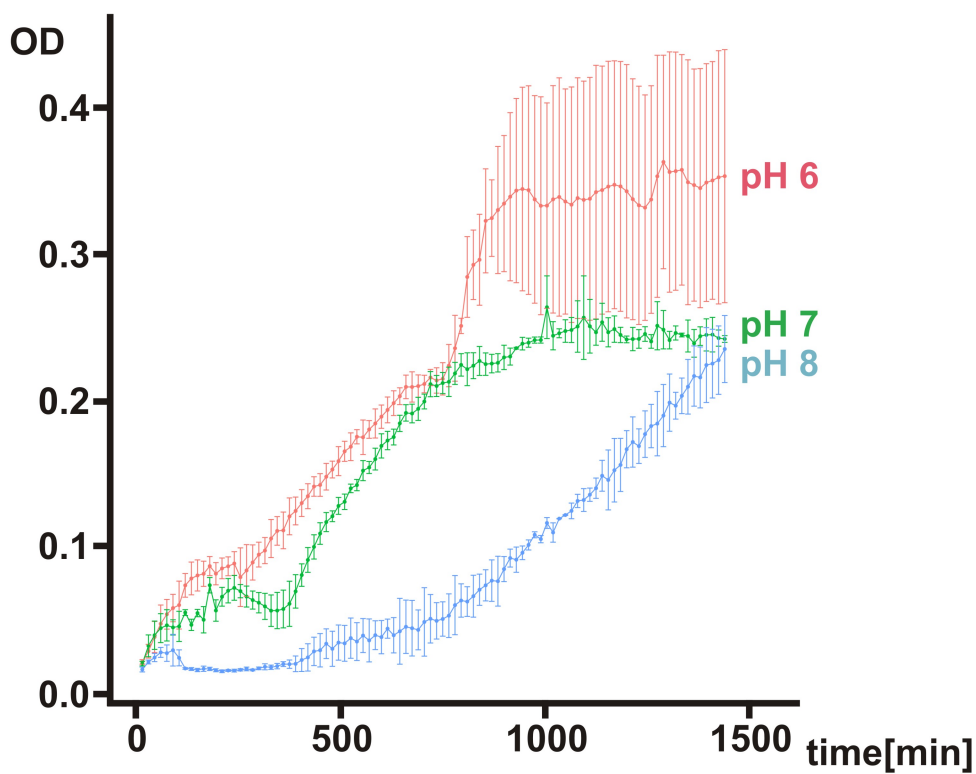
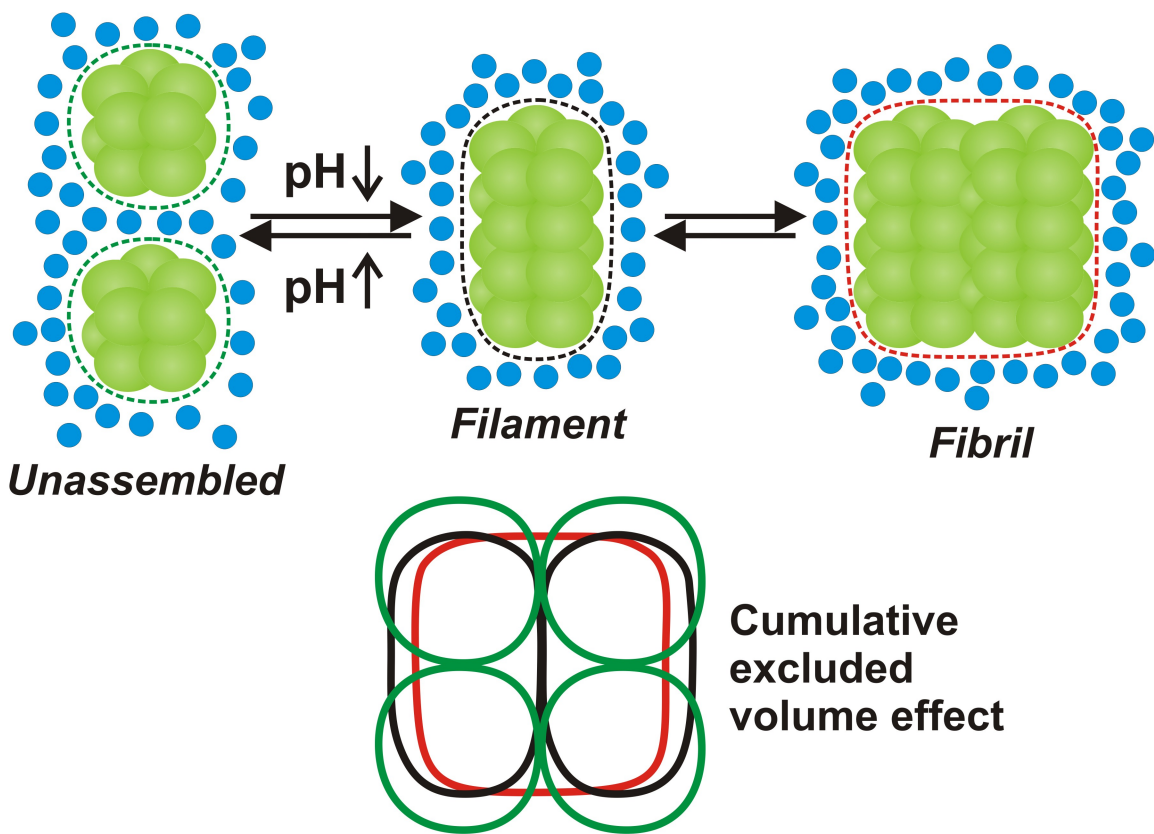


Figure 7

A



B



Supplemental file 1

Filament formation by metabolic enzymes is a specific adaptation to an advanced state of cellular starvation

Ivana Petrovska, Elisabeth Nüske, Matthias C. Munder, Gayathrie Kulasegaran, Kimberley Gibson, Liliana Malinovska, Doris Richter, Jean-Marc Verbavatz, Simon Alberti

Table S1: Plasmids used in this study.

#	Accession number	Plasmid name
1	O-2446	pAG415ADH1-GLN1
2	O-2470	pAG415GPD-GLN1-mCherry
3	O-2514	pAG415GPD-GLN1(E186K)-mCherry
4	O-2517	pAG415GPD-GLN1(P83R)-mCherry
5	O-2479	pAG415GPD-GLN1(T49E)-mCherry
6	O-2529	pAG415GPD-GLN1(Y81A)-mCherry
7	O-2520	pAG415GPD-GLN1(R23E)-mCherry
8	O-2708	pAG415GPD-GLN1(R23E,T49E)-mCherry
9	O-3048	pAG415GPD-6xHIS-GLN1-V5
10	O-3049	pAG415GPD-6xHIS-GLN1(R23E)-V5
11	O-3050	pAG415GPD-6xHIS-GLN1(P83R)-V5
12	O-2948	pAG415GPD-6xHIS-GLN1-mCherry
13	O-2949	pAG415GPD-6xHIS-GLN1(R23E)-mCherry
14	O-2950	pAG415GPD-6xHIS-GLN1(P83R)-mCherry
15	O-2915	pAG415ADH1-GLN1(T49E)
16	O-2918	pAG415ADH1-GLN1(R23E)
17	O-2921	pAG415ADH1-GLN1(R23E,T49E)
18	O-3051	pAG415ADH1-GLN1-4Cys
19	O-3056	pDEST24-GLN1
20	O-3057	pDEST24-GLN1(E186K)
21	O-3058	pDEST24-GLN1(R23E)
22	O-2996	pAG415GAL-GLN1-mCherry
23	O-3052	pAG415GPD-GLN1-V5
24	O-3053	pAG415GPD-GLN1(R23E)-V5
25	O-3054	pAG415GPD-GLN1(P83R)-V5

Table S2: Antibodies used in this study.

#	Antibody	Company name	Catalog number
1	Anti-His6x tag	Dianova	Dia 900
2	Anti-V5 tag	Invitrogen	R960-25
3	Monoclonal anti-mCherry	In house	N/A

Table S3: Yeast strains used in this study.

#	Number	Background	Genotype
1	1928	BY4741	GLN1::GFP-HisMX
2	2474	W303 ADE+	GLN1::mCherry-KanMX
3	2568	W303 ADE+	gln1::SpHIS5, pAG416ADH1-GLN1
4	2716	W303 ADE+	gln1::SpHIS5, pAG415GPD-GLN1-mCherry
5	2972	W303 ADE+	gln1::SpHIS5, pAG415GPD-GLN1(E186K)-mCherry
6	2977	W303 ADE+	gln1::SpHIS5, pAG415GPD-GLN1(P83R)-mCherry
7	2975	W303 ADE+	gln1::SpHIS5, pAG415GPD-GLN1(T49E)-mCherry
8	2711	W303 ADE+	gln1::SpHIS5, pAG415GPD-GLN1(Y81A)-mCherry
9	2708	W303 ADE+	gln1::SpHIS5, pAG415GPD-GLN1(R23E)-mCherry
10	2973	W303 ADE+	gln1::SpHIS5, pAG415GPD-GLN1(R23E,T49E)-mCherry
11	3115	W303 ADE+	gln1::SpHIS5, pAG415GPD-6xHIS-GLN1-mCherry
12	3117	W303 ADE+	gln1::SpHIS5, pAG415GPD-6xHIS-GLN1(R23E)-mCherry
13	3121	W303 ADE+	gln1::SpHIS5, pAG415GPD-6xHIS-GLN1(P83R)-mCherry
14	3139	W303 ADE+	URA8::sfGFP(V206R)-KanMX
15	3028	W303 ADE+	GLT1::sfGFP(V206R)-KanMX
16	3141	W303 ADE+	GCN3::sfGFP(V206R)-KanMX
17	3010	W303 ADE+	gln1::SpHIS5, pAG415ADH1-GLN1
18	3011	W303 ADE+	gln1::SpHIS5, pAG415ADH1-GLN1(T49E)
19	3247	W303 ADE+	gln1::SpHIS5, pAG415ADH1-GLN1(R23E)
20	3015	W303 ADE+	gln1::SpHIS5, pAG415ADH1-GLN1(R23E,T49E)
21	3019	W303 ADE+	gln1::SpHIS5, pAG415ADH1-GLN1(P83R)
22	3014	W303 ADE+	gln1::SpHIS5, pAG415ADH1-GLN1(T81A)
23	3245	Prototrophic W303	gln1::KanMX, ura3::HygB, pAG416ADH1-GLN1
24	3259	Prototrophic W303	gln1::KanMX, pAG41NAT-ADH1-GLN1
25	3260	Prototrophic W303	gln1::KanMX, pAG41NAT-ADH1-GLN1(R23E)
26	2883	Prototrophic W303	Wildtype (Klosinska et al., 2011)
27	3471	Prototrophic W303	GLN1::Y81A
28	3465	W303 ADE+	gln1::SpHIS5, pAG415GPD-6xHis-GLN1-V5
29	3466	W303 ADE+	gln1::SpHIS5, pAG415GPD-6xHis-GLN1(R23E)-V5
30	3467	W303 ADE+	gln1::SpHIS5, pAG415GPD-6xHis-GLN1(P83R)-V5
31	3468	W303 ADE+	gln1::SpHIS5, pAG415GPD-GLN1-V5
32	3469	W303 ADE+	gln1::SpHIS5, pAG415GPD-GLN1(R23E)-V5
33	3470	W303 ADE+	gln1::SpHIS5, pAG415GPD-GLN1(P83R)-V5